



NOVEMBER 7, 2024

# Facility Utilization Planning Study – Phase III



*Walled Lake Consolidated Schools*



# Presentation Overview

---

1. Overview of Phase III Engagement Goals and Objectives
2. Overview of (4) Current Middle Schools
  - Current Cohort Alignment
  - Site Plan and Floor Plans
  - Enrollment / Capacity Considerations
3. Review of Cohort alignment and potential scenarios
  - Reduction from (4) to (3) Middle Schools
  - Other considerations (transportation, “protect the boundaries”, etc.)
4. Consensus Recommendation
  - Geisler MS was identified as the MS facility for repurposing
5. Next Steps/Considerations
  - Review of Key Dates/Activities



# Overview of Phase III Engagement Goals and Objectives

SECTION 1



### Background of the 2023 Study

- Several long-term recommendations were provided for WLCSD consideration in 2018
  - The continuation of the 2018 Facility Utilization findings and recommendation were to continue to monitor enrollment and utilization on a year-by-year basis.
    - 2012 Enrollment: 15,590 students
    - 2024 Enrollment: 12,105 students
    - Decrease of 3,485 students over a 12-year period
- The purpose of the 2023 Facility Utilization Assessment was a continuation of identifying potential options to more effectively and efficiently utilize District resources while reducing District expenses post-Covid and consider current and projected trends.



## Overview

---

### Background of the 2023 Study

- The Facility Utilization Committee, comprised of community members, administrators, teachers and staff, and parents whose task was to assist in identifying options for WLCSD Administration and Board of Education to consider to achieve its goals and objectives.
- Based on the passing of the 2024 Bond, WLCSD Board of Education directed the administration to prepare a recommendation for reducing the number of Middle Schools from (4) to (3), relocating ESC functions to the repurposed vacant Middle School, and new space for Adult Transitions Program (ATP).
- Included in the 2024 Bond Program are funds for renovating and reconfiguring improvements at the Middle School level.



## Goals and Objectives

---

### Facility Utilization Committee Phase III Goals and Objectives

- Determine, of the (4) existing Middle Schools Facilities, which facility should be repurposed.
- Support adjusting feeder-patterns to align (12) elementary schools to (3) middle schools to (3) high schools
- Determine new space for ATP.



SECTION 2

# Overview of Four (4) Current Middle Schools



# Existing Feeder Pattern

## Walled Lake Consolidated Schools Feeder Pattern

*Your feeder pattern is determined by your address, not the school you attend*

### Current Feeder Pattern

- (12) Elementary Schools
- (4) Middle Schools
- (3) High Schools

### Currently no “splits” of ES students to MS level

### Currently “splits” occur at Geisler, Walnut Creek, and Sarah Banks to the HS level

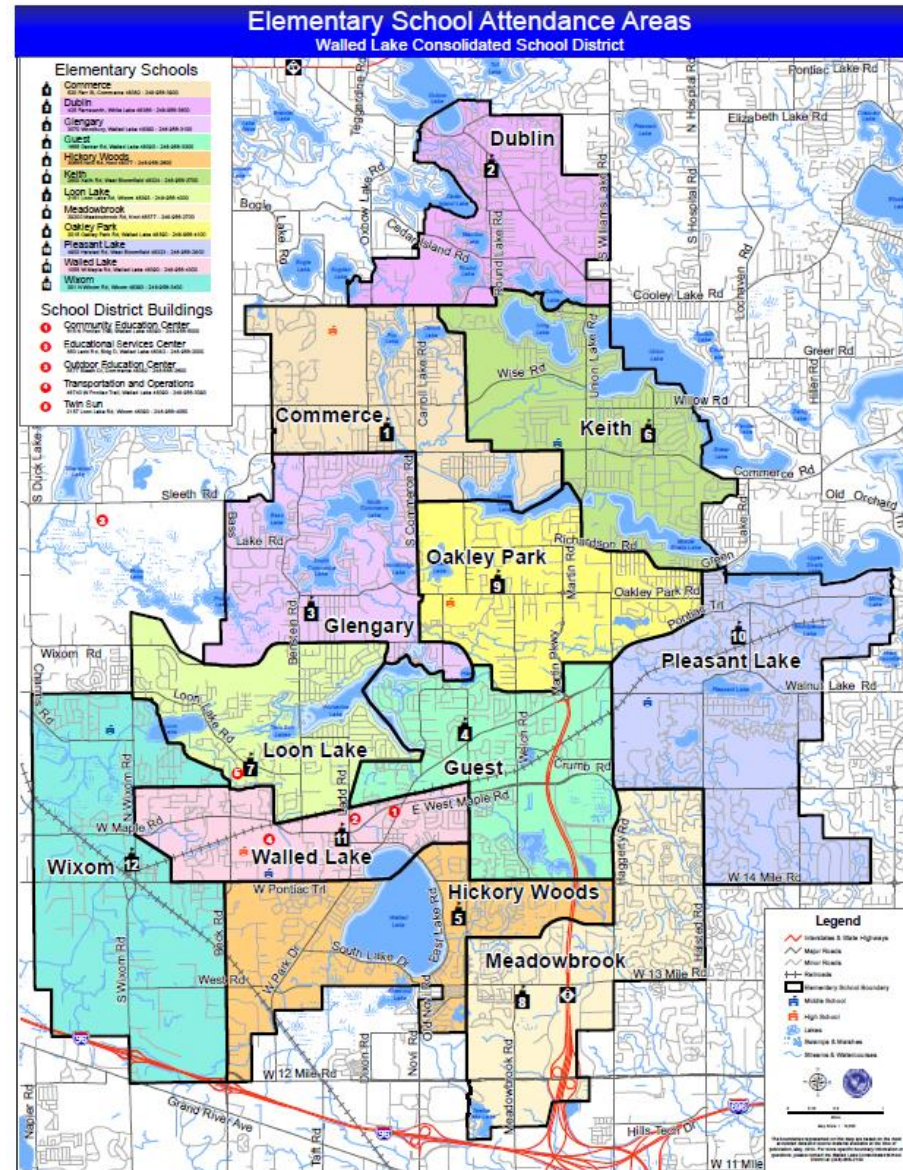
<i>Elementary</i>		<i>Middle School</i>		<i>High School</i>
Commerce	→	C H Smart	→	Northern
Dublin	→	C H Smart	→	Northern
Keith	→	C H Smart	→	Northern
Hickory Woods	→	James R Geisler	→	Western
Mary Helen Guest	→	James R Geisler	→	Central
Meadowbrook	→	James R Geisler	→	Western
Glengary	→	Walnut Creek	→	Northern
Oakley Park	→	Walnut Creek	→	Central
Pleasant Lake	→	Walnut Creek	→	Central
Loon Lake	→	Sarah Banks MS	→	Central
Walled Lake	→	Sarah Banks MS	→	Western
Wixom	→	Sarah Banks MS	→	Western



# Existing Boundary Maps

## Elementary Schools

- 1** **Commerce**  
520 Farr St, Commerce 48382 - 248-956-3900
- 2** **Dublin**  
425 Farnsworth, White Lake 48386 - 248-956-3800
- 3** **Glengary**  
3070 Woodbury, Walled Lake 48390 - 248-956-3100
- 4** **Guest**  
1655 Decker Rd, Walled Lake 48390 - 248-956-3300
- 5** **Hickory Woods**  
30655 Novi Rd, Novi 48377 - 248-956-2600
- 6** **Keith**  
2800 Keith Rd, West Bloomfield 48324 - 248-956-3700
- 7** **Loon Lake**  
2151 Loon Lake Rd, Wixom 48393 - 248-956-4000
- 8** **Meadowbrook**  
29200 Meadowbrook Rd, Novi 48377 - 248-956-2700
- 9** **Oakley Park**  
2015 Oakley Park Rd, Walled Lake 48390 - 248-956-4100
- 10** **Pleasant Lake**  
4900 Halsted Rd, West Bloomfield 48323 - 248-956-2800
- 11** **Walled Lake**  
1055 W Maple Rd, Walled Lake 48390 - 248-956-4300
- 12** **Wixom**  
301 N Wixom Rd, Wixom 48393 - 248-956-3400



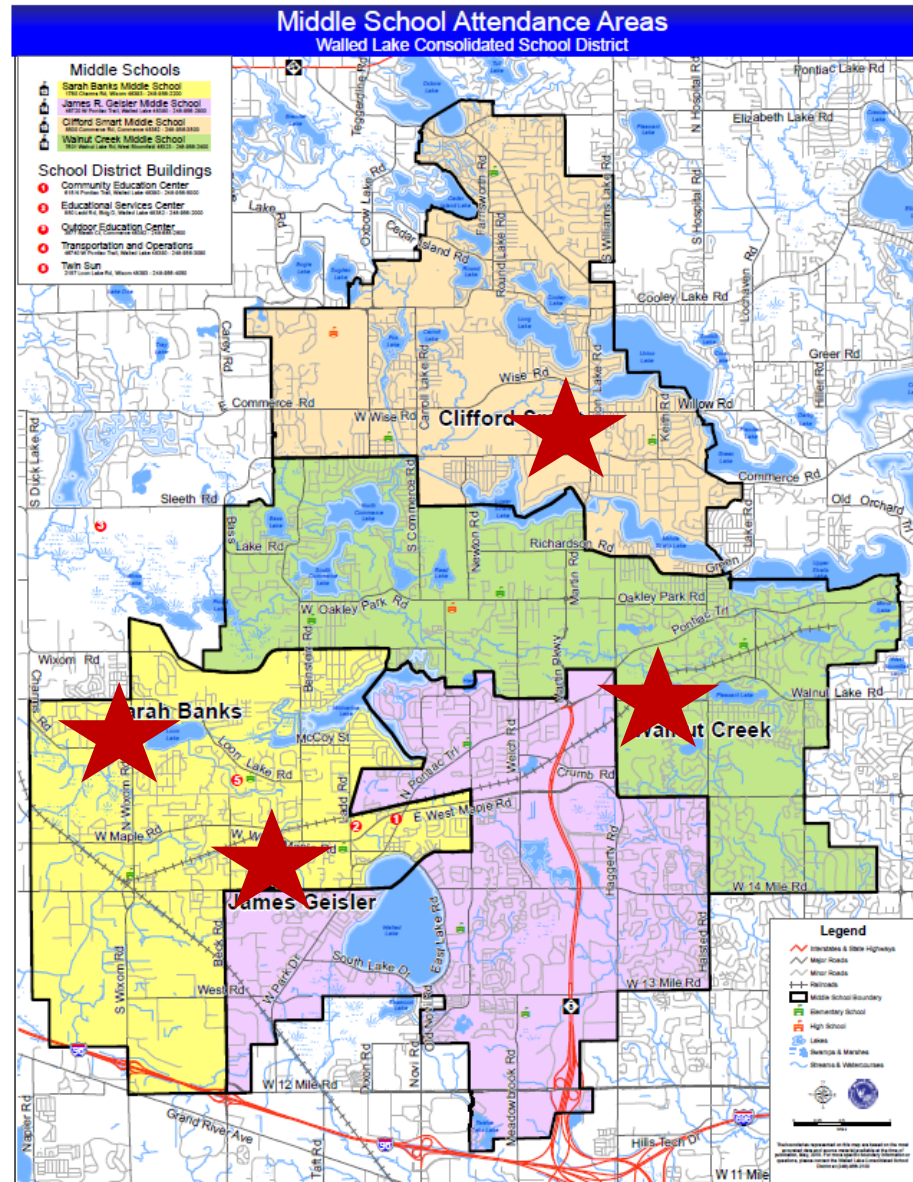


# Existing Boundary Maps

## Middle Schools

- 13
- 14
- 15
- 16

<b>Sarah Banks Middle School</b> 1760 Chams Rd, Wixom 48393 - 248-956-2200
<b>James R. Geisler Middle School</b> 46720 W Pontiac Trail, Walled Lake 48390 - 248-956-2900
<b>Clifford Smart Middle School</b> 8500 Commerce Rd, Commerce 48382 - 248-956-3500
<b>Walnut Creek Middle School</b> 7601 Walnut Lake Rd, West Bloomfield 48323 - 248-956-2400





# Existing Site Map – Sarah Banks MS

**Sarah Banks Middle School**  
1760 Charms Road, Wixom

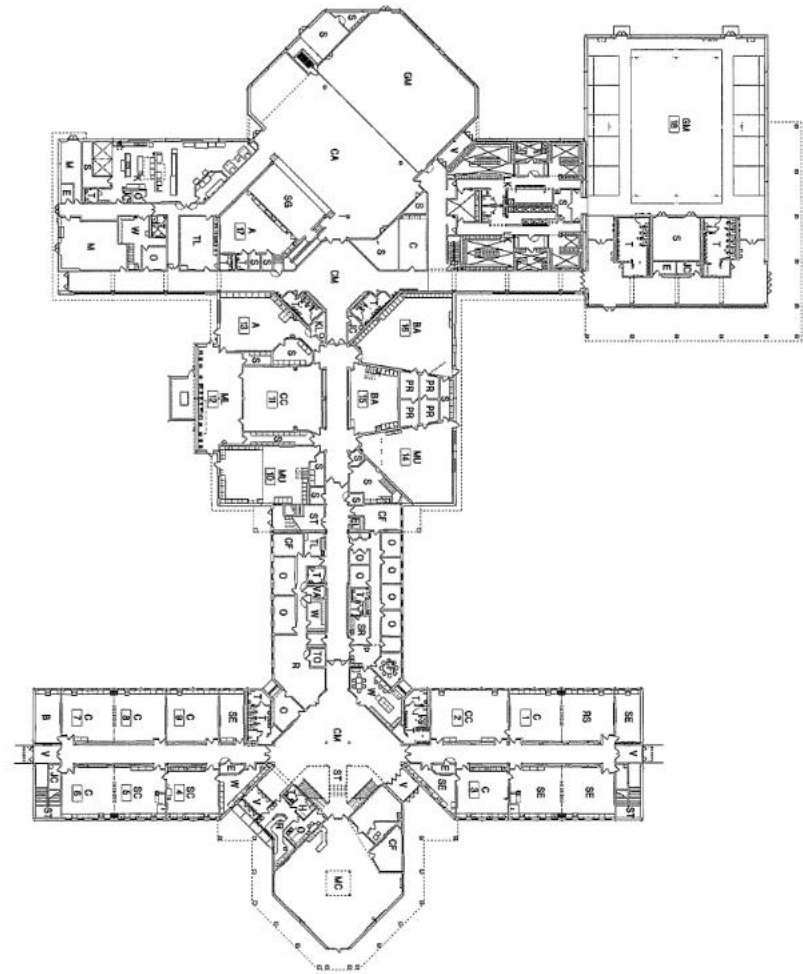
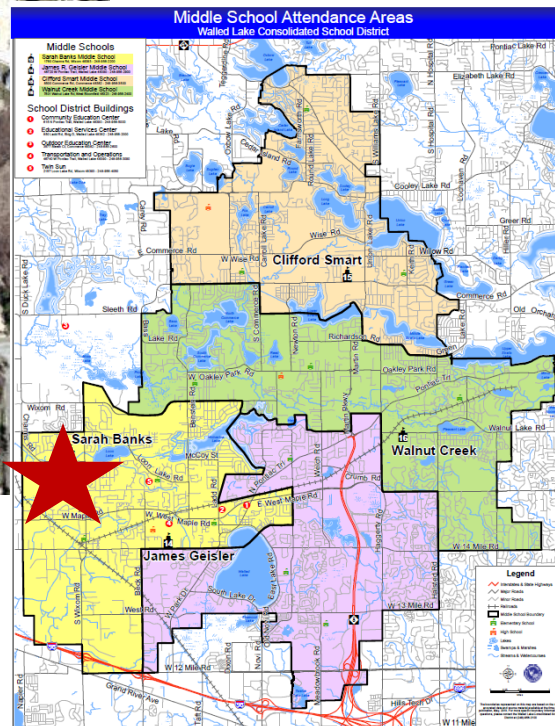
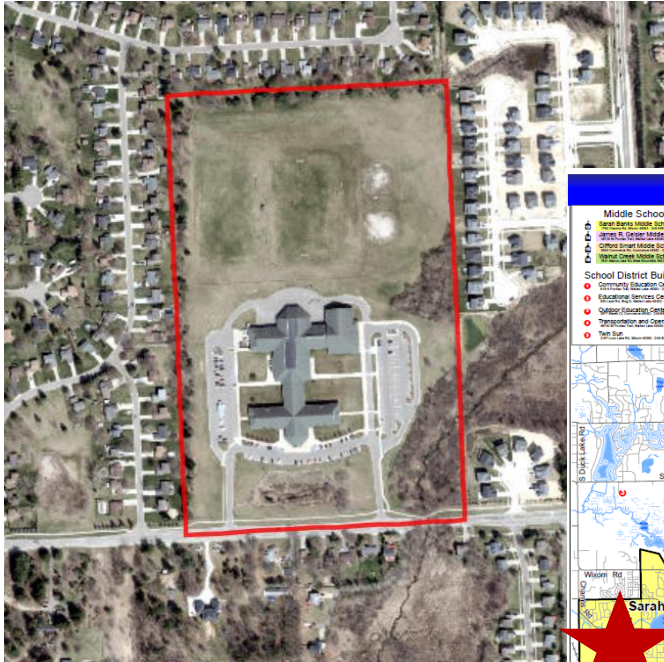
**Built: 1998**

**Size: 144,370 s.f. (37 acres)**

**Enrollment (Fall 2006): 857 students**

**Enrollment (Fall 2024): 593 students (-264 students from 2006)**

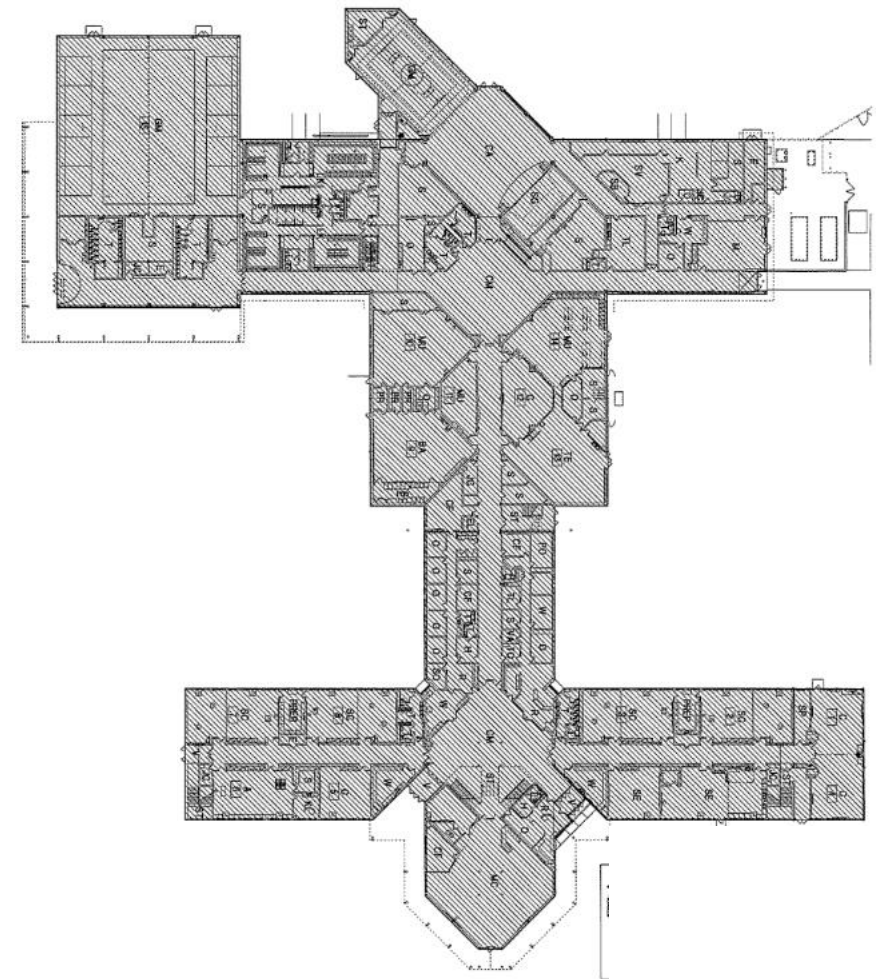
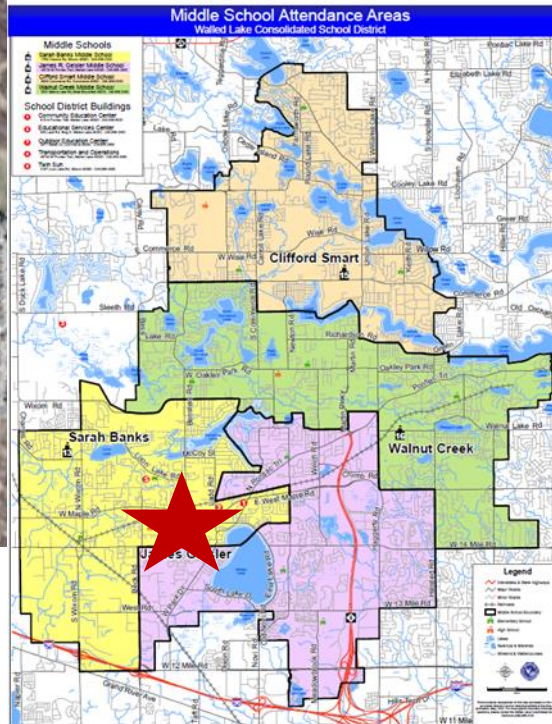
**Capacity: 1,013 students**





# Existing Site Map – James R. Geisler MS

**James R. Geisler Middle School**  
**46720 West Pontiac Trail, Walled Lake**  
**Built: 1992**  
**Size: 149,913 s.f. (13 acres)**  
**Enrollment (Fall 2006): 902 students**  
**Enrollment (Fall 2024): 622 students (-280 students from 2006)**  
**Capacity: 833 students**





# Existing Site Map – Clifford Smart MS

## Clifford Smart Middle School

8500 Commerce Road, Commerce Twp.

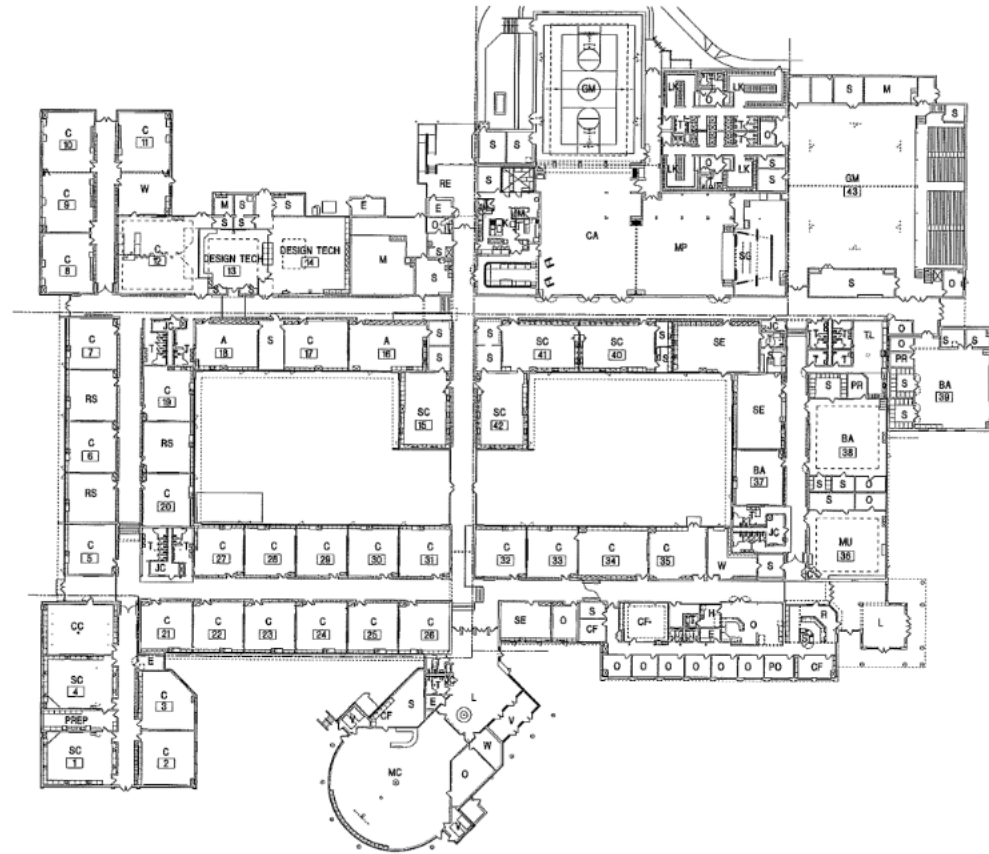
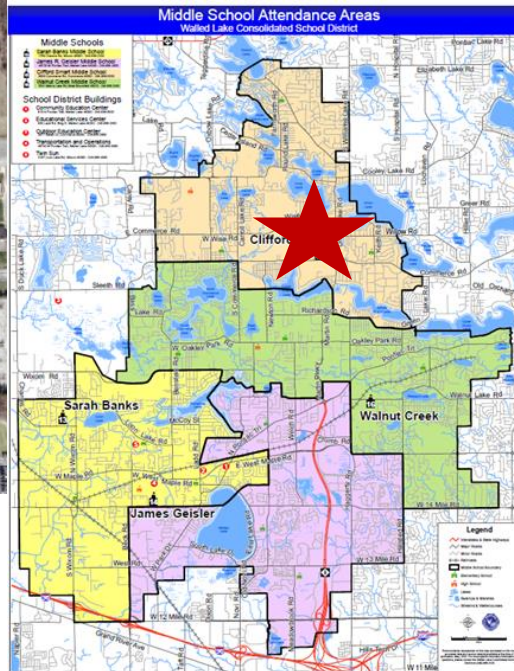
Built: 1991 (current structure / original 1958)

Size: 154,940 s.f. (26 acres)

Enrollment (Fall 2006): 969 students

Enrollment (Fall 2024): 897 students (-72 students from 2006)

Capacity: 990 students





# Existing Site Map – Walnut Creek MS

## Walnut Creek Middle School

7601 Walnut Lake, West Bloomfield

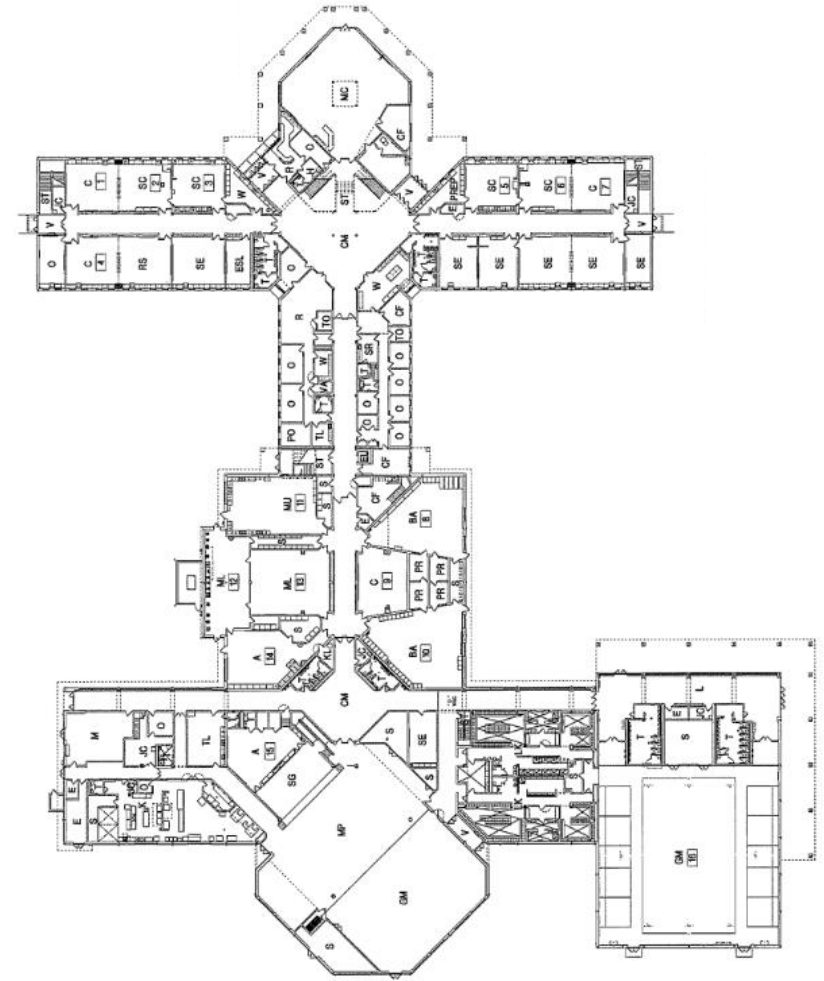
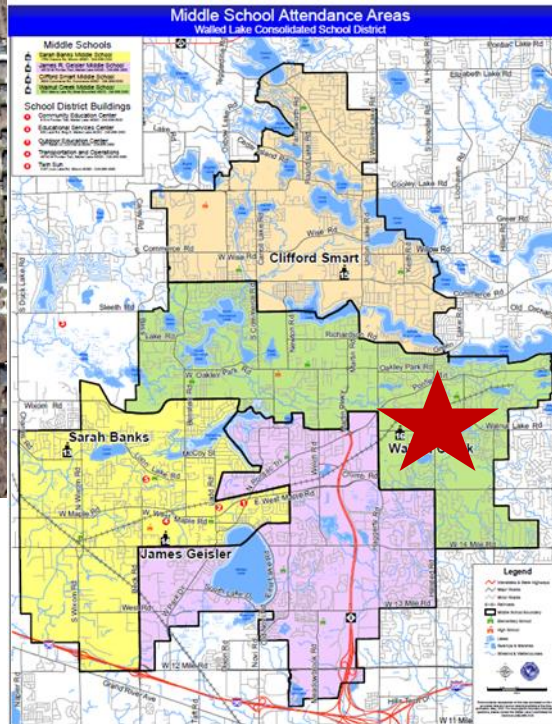
Built: 1998

Size: 144,370 s.f. (29acres)

Enrollment (Fall 2006): 893 students

Enrollment (Fall 2024): 643 students (-250 students from 2006)

Capacity: 968 students





# Review of Cohort Alignment and Potential Scenarios

SECTION 3

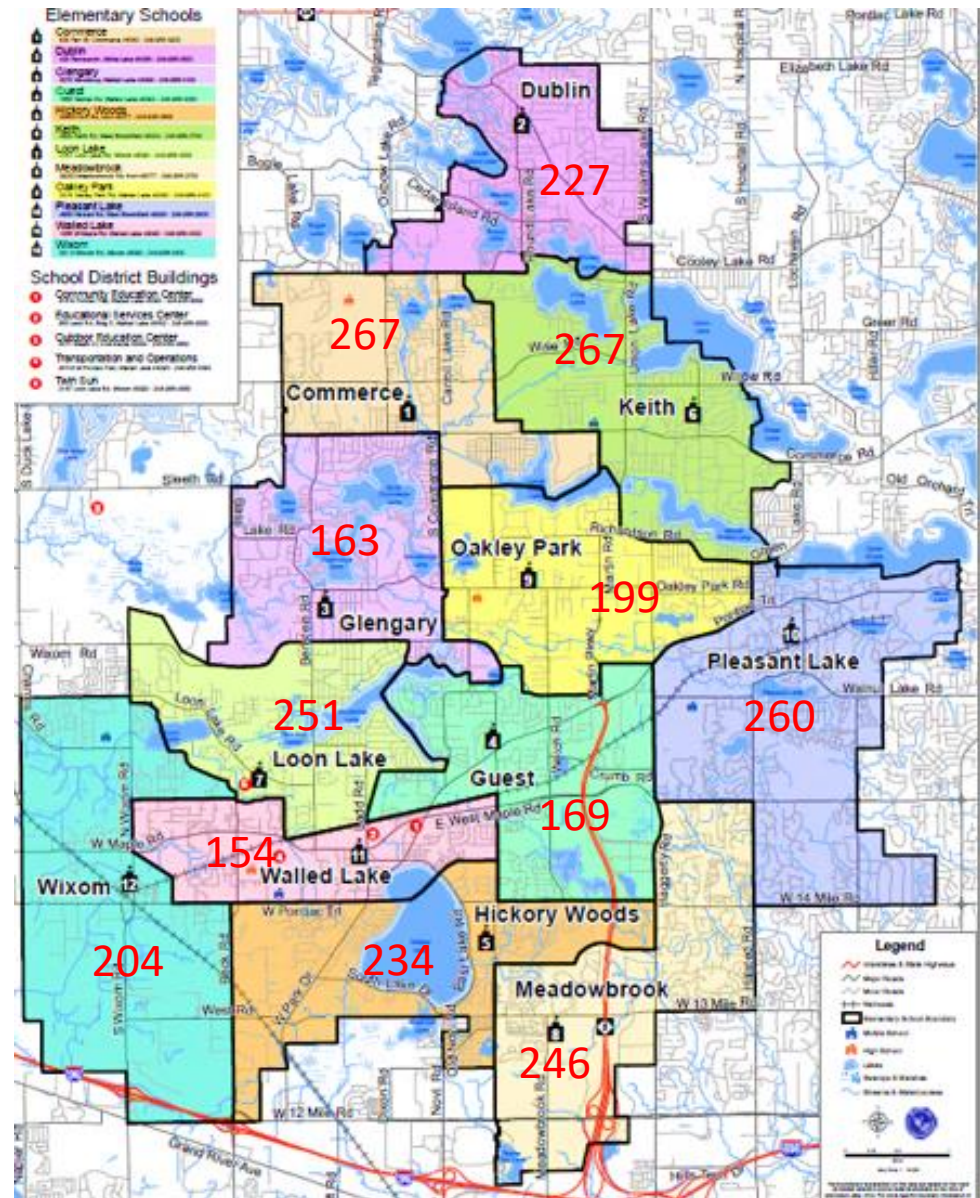


# Existing Grade 6-8 Cohort Enrollment Analysis

## Walled Lake Consolidated Schools Feeder Pattern

Your feeder pattern is determined by your address, not the school you attend

Elementary		Middle School		High School
Commerce	→	C H Smart	→	Northern
Dublin	→	C H Smart	→	Northern
Keith	→	C H Smart	→	Northern
Hickory Woods	→	James R Geisler	→	Western
Mary Helen Guest	→	James R Geisler	→	Central
Meadowbrook	→	James R Geisler	→	Western
Glengary	→	Walnut Creek	→	Northern
Oakley Park	→	Walnut Creek	→	Central
Pleasant Lake	→	Walnut Creek	→	Central
Loon Lake	→	Sarah Banks MS	→	Central
Walled Lake	→	Sarah Banks MS	→	Western
Wixom	→	Sarah Banks MS	→	Western



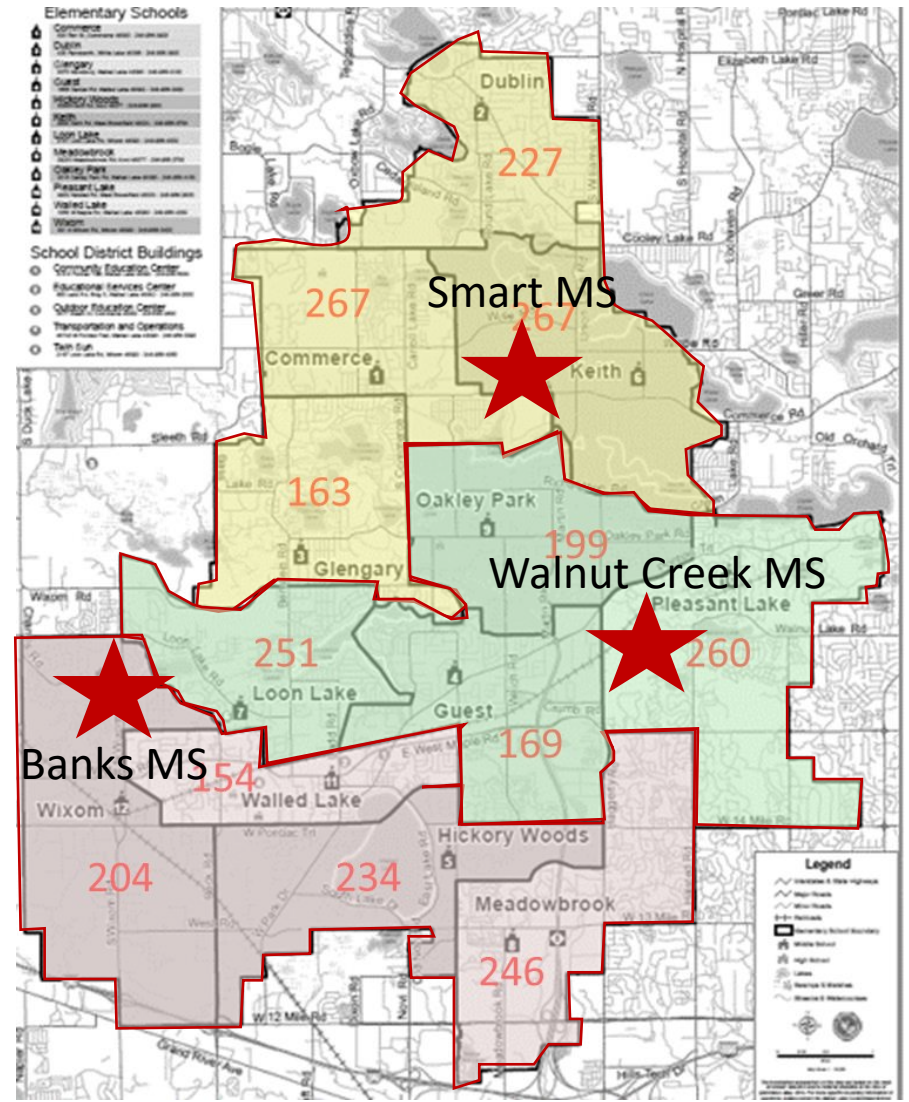
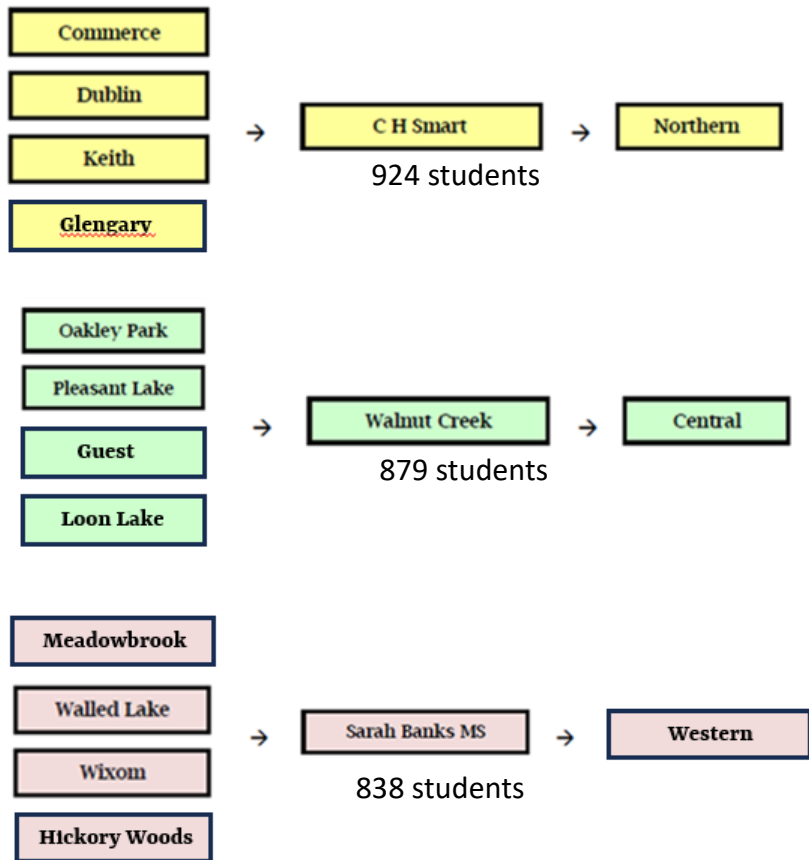
Number represents the future grade 6-8 MS enrollment from each ES



# Recommended Concept – Repurpose Geisler

**DRAFT**

Based on Geisler’s central location, small acreage limiting expandability, largest decrease of enrollment, etc. it SHOULD BE considered for repurpose. As a result, the following realignment would occur.



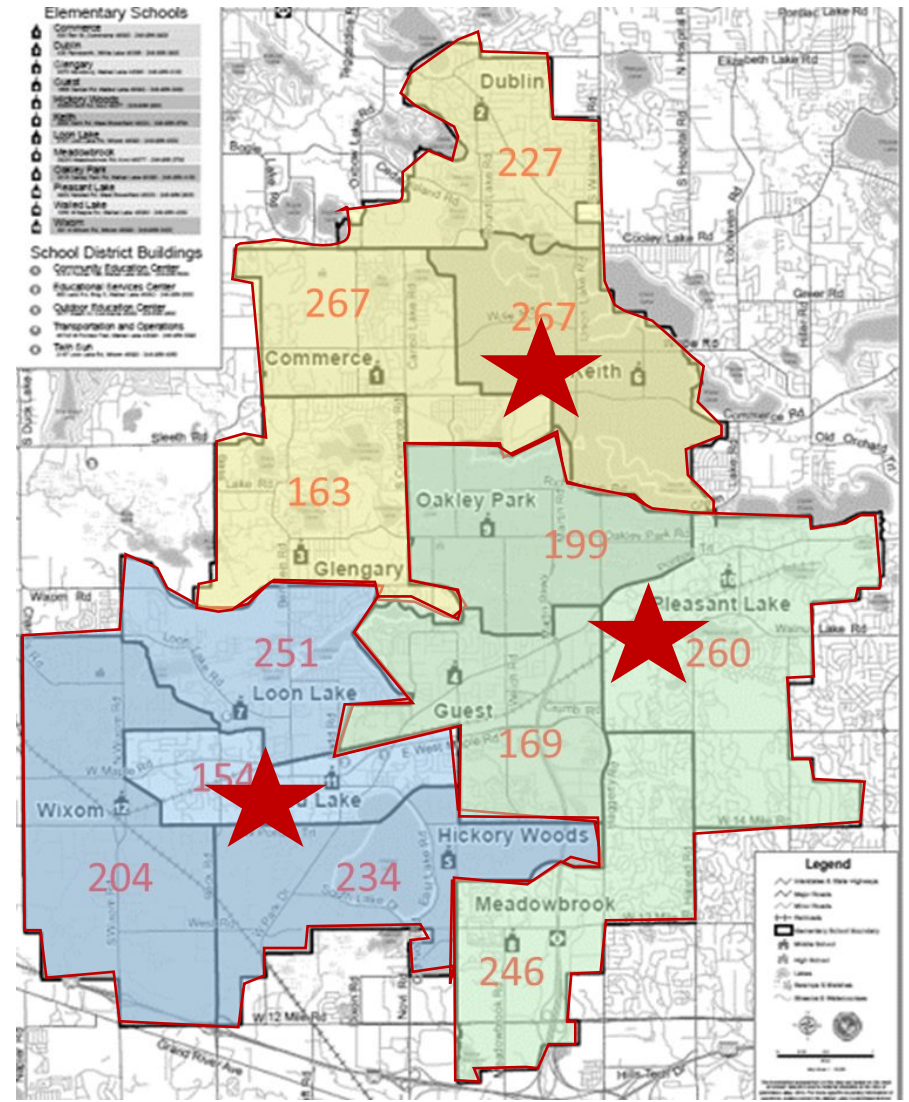
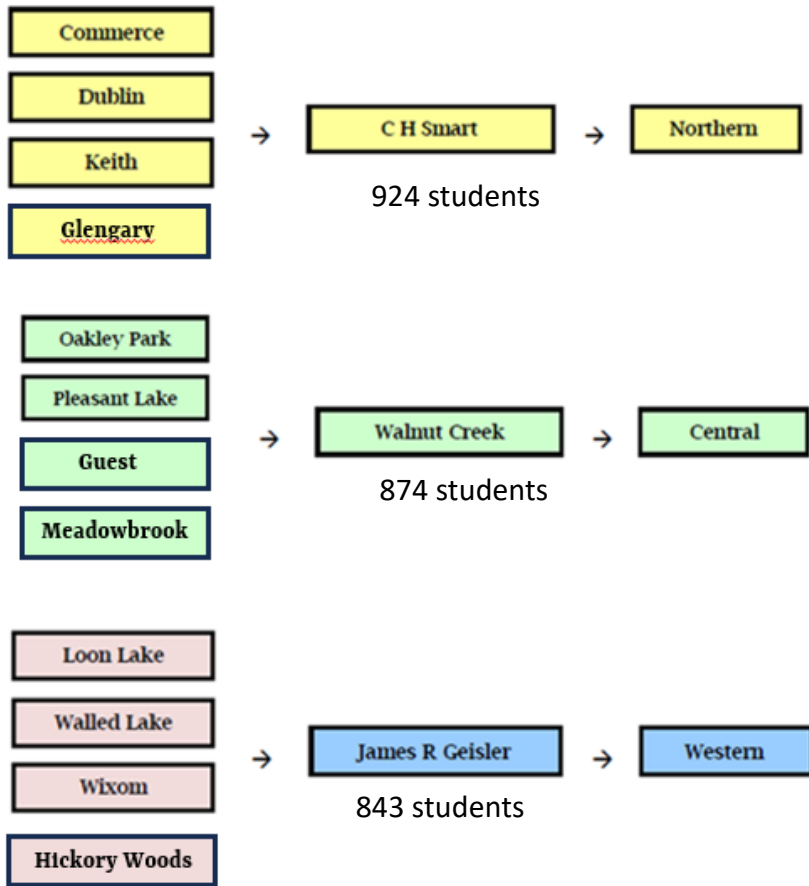
Number represents the future grade 6-8 MS enrollment from each ES



# Concept #2 – Repurpose Banks

**DRAFT**

Based on Banks' western-central location, and smallest enrollment, second largest decrease of enrollment, etc. **SHOULD BE** considered for repurpose. As a result, the following realignment would occur.

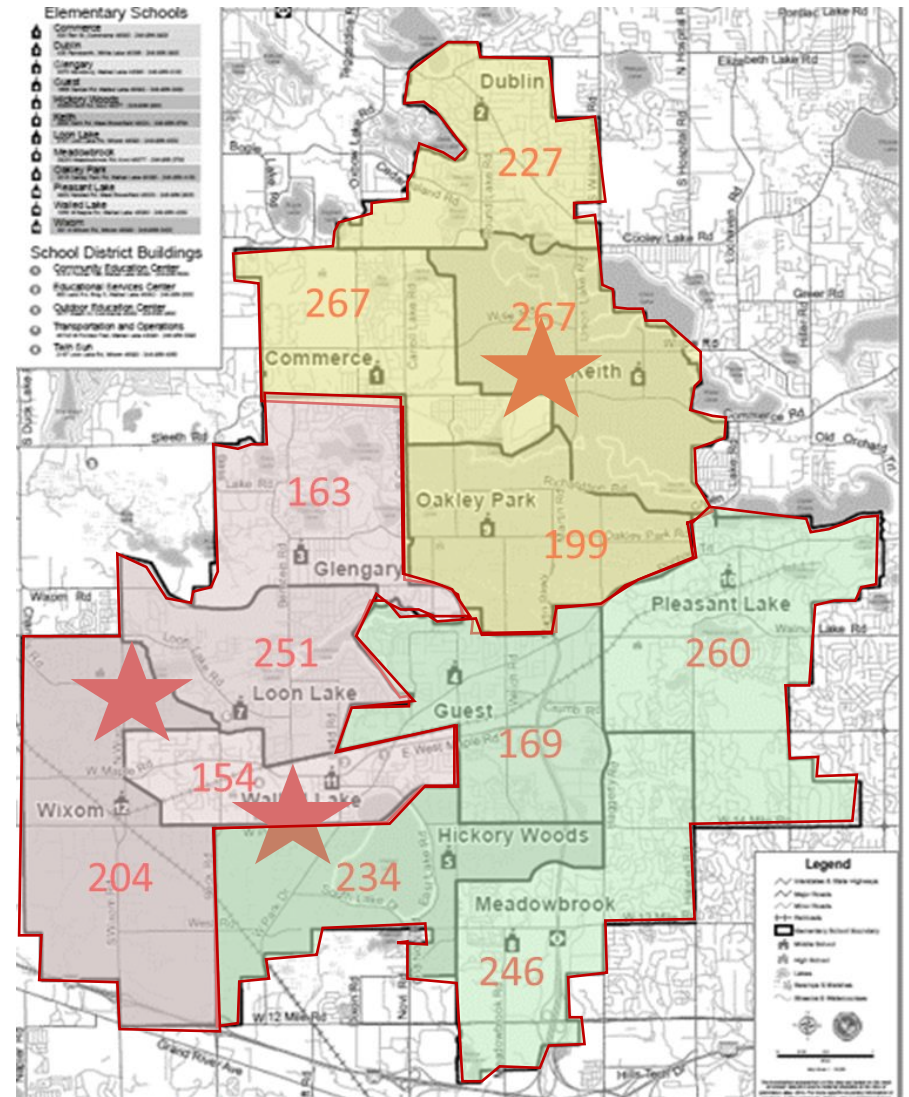
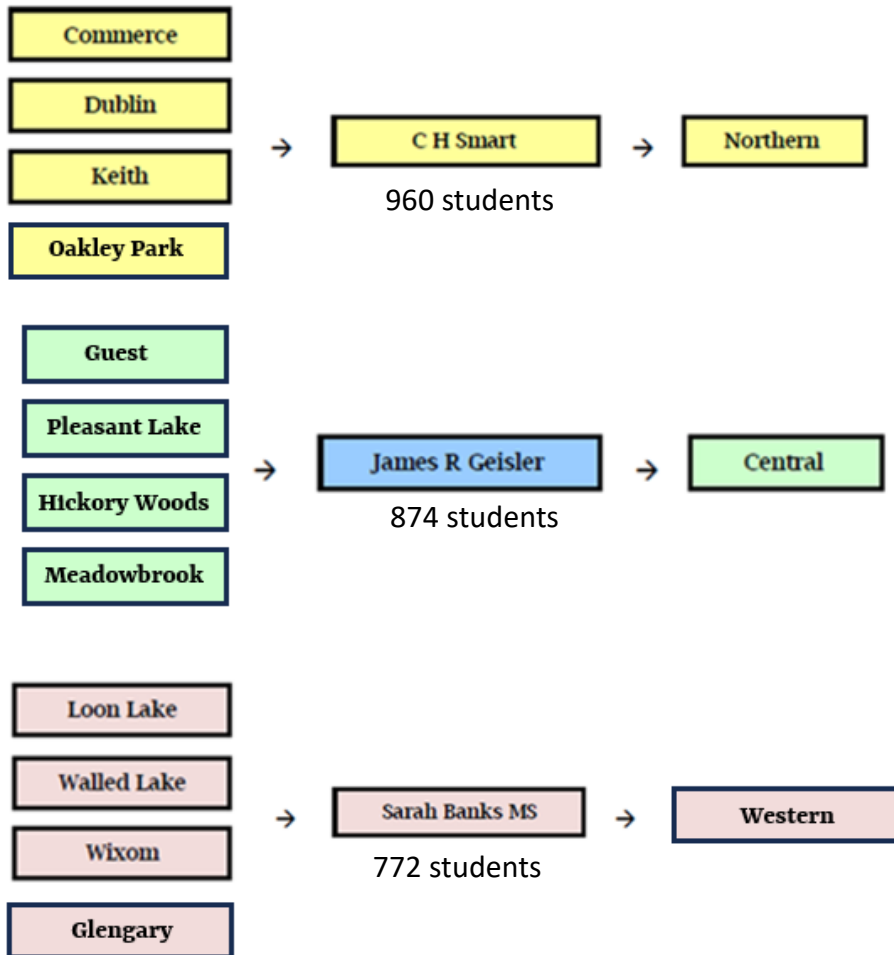




# Concept #3 – Repurpose Walnut Creek

**DRAFT**

Based on Walnut Creek’s eastern-central location, and second smallest enrollment, decrease of enrollment, etc. **SHOULD BE** considered for repurpose. As a result, the following realignment would occur.





SECTION 4  
Consensus Recommendation



# Development of Facility Option

---

## Facility Reduction Considerations

- Q: Based on the considerations presented, understanding the location of the current middle schools, acreage, enrollment, utilization and capacity, size of building facility, etc. which middle school SHOULD BE considered for repurpose?
- A: The Facility Utilization Planning committee, a deep dive into enrollment, boundary analysis, building capacity, cohort alignment, and programs of each middle school. Upon the conclusion of this review process, the majority consensus of the committee identified Geisler Middle School as the facility to be repurposed.



# Development of Facility Option

---

## Facility Reduction Considerations

- This recommendation results in Banks Middle School, Smart Middle School, and Walnut Creek Middle School to remain as the facilities for Grades 6-8 education. Below are the key data points highlighted by the committee for selecting Geisler Middle School for repurposing as well as the proposed realignment.
  - Central location within the district for administrative functions, adjacent to the current Operations/Transportation Services,
  - Smallest student capacity compared to the other Middle School facilities.
  - Smallest acreage compared to the other Middle School sites to accommodate growth.
  - Provides opportunities at Banks, Smart, and Walnut Creek for future growth (either through residential growth or School of Choice students).
  - Ability to maintain the current elementary school boundaries intact, along with high school placement.



M222  
CLASSROOM

M221  
CLASSROOM

SECTION 8

# Next Steps



## Next Steps

---

- **Facility Utilization Committee Kick-off Meeting – Thursday, September 12, 2024 COMPLETE**
  - Opportunity to confirm the 2023 recommendations, inquire about information needed
- **Facility Utilization Committee Work Session– Thursday, September 26, 2024 COMPLETE**
  - Review in-depth for (4) Middle Schools (site, facility, academics, capital needs, etc.)
  - Draft option for Board of Education Work Session
- **Board of Education Work Session – Thursday, November 7, 2024 – IN PROCESS**
  - Opportunity for the BOE and community to review recommendation
- **Facility Utilization Committee Work Session – Wednesday, November 13, 2024 (if needed)**
- **Board of Education Meeting – Thursday, December 5, 2023**
  - Final review / adoption for Middle School alignment going forward



# *Helping to Plan the Future*

Paul Wills, AIA, LEED AP | Partner  
(248) 223-3316  
[paul.wills@plantemoran.com](mailto:paul.wills@plantemoran.com)

David Goldman | Senior Consultant  
(248) 603-5071  
[david.goldmand@plantemoran.com](mailto:david.goldmand@plantemoran.com)

[pmrealpoint.com](http://pmrealpoint.com) | (248) 223-3500