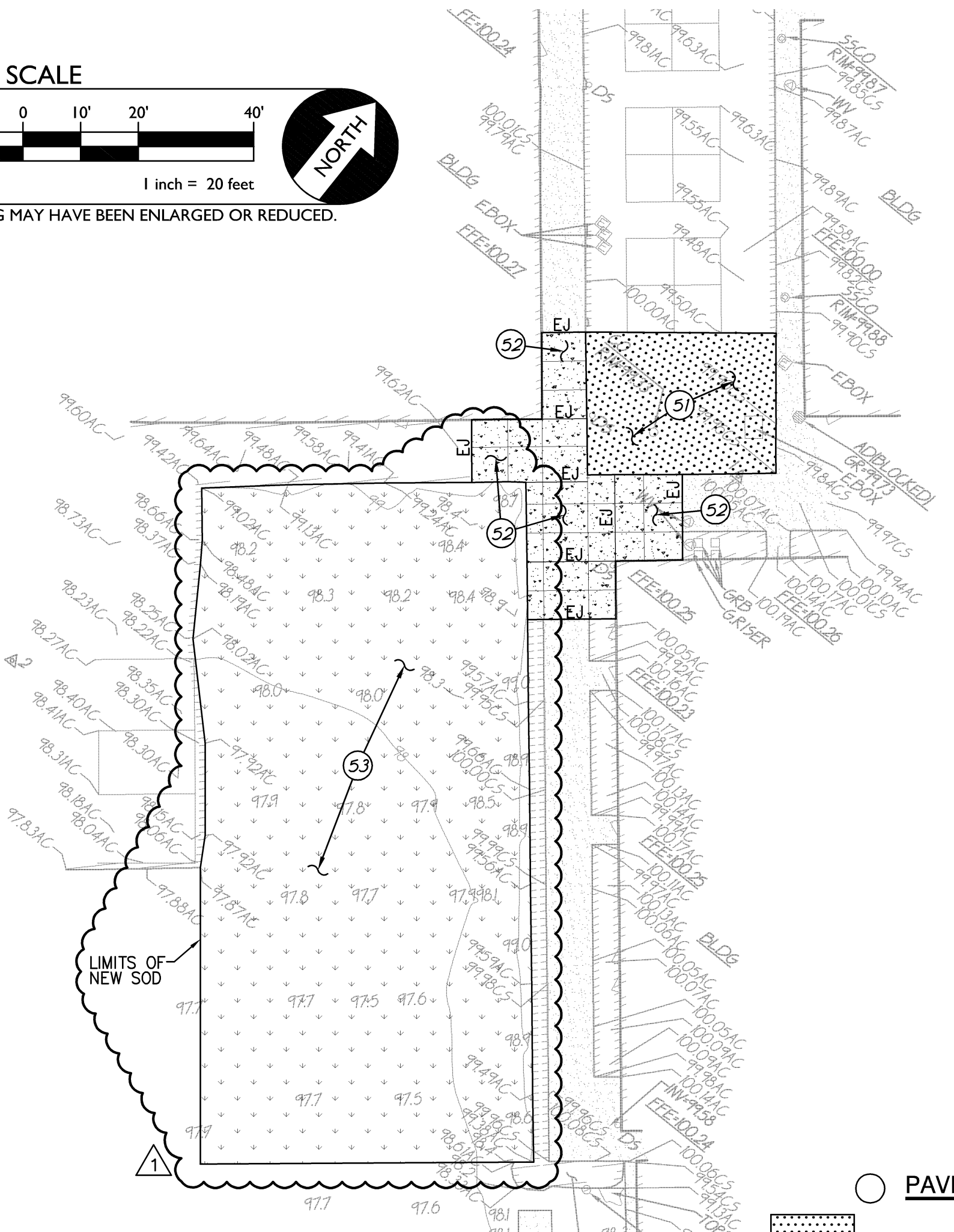
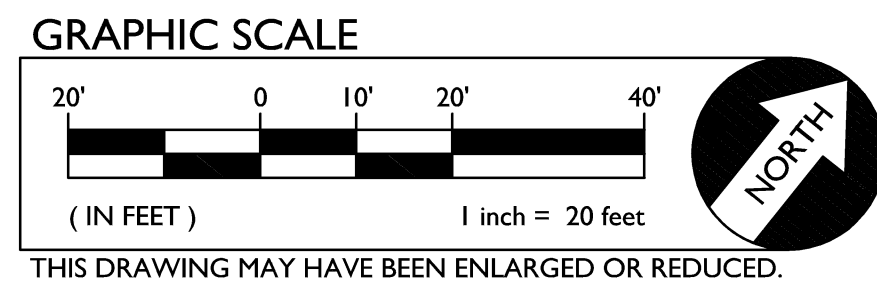


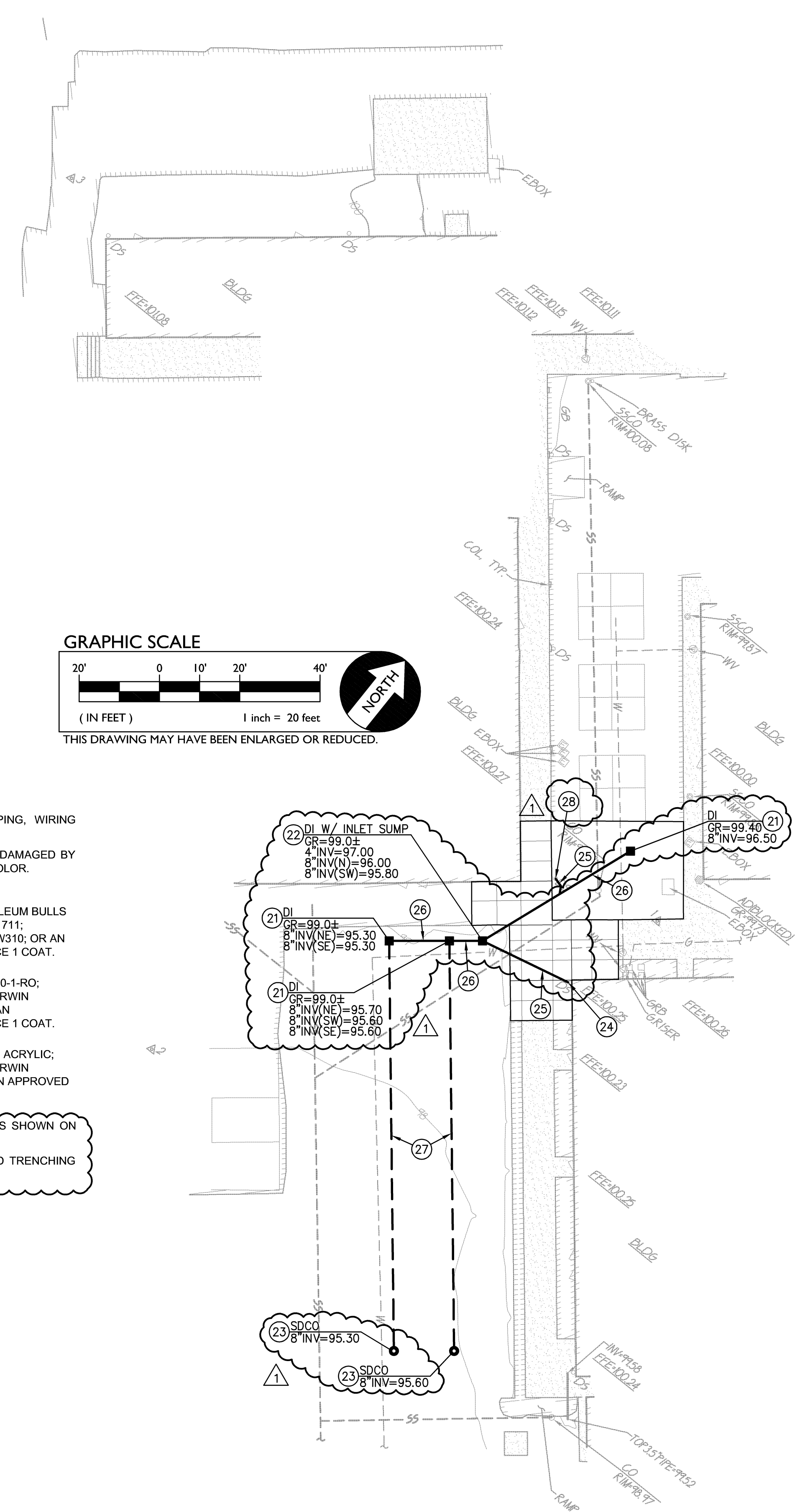
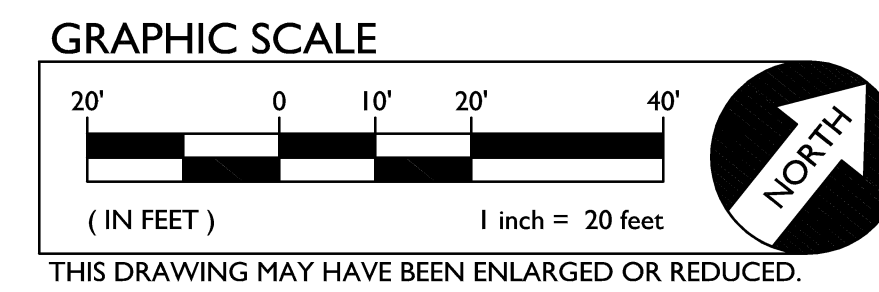
GRADING PLAN

- GRADING NOTES** *NOTES APPLY TO THIS SHEET ONLY
1. MATCH EXISTING GRADE/ELEVATION.
 2. ADJUST TO FINISH GRADE.
 3. MATCH EXISTING FINISH FLOOR ELEVATION.



PAVING PLAN

- PAVING NOTES** *NOTES APPLY TO THIS SHEET ONLY
51. PLACE 3" AC OVER 8" AB ON COMPACTED SUBGRADE.
 52. PLACE 4" PCC OVER 4" AB ON COMPACTED SUBGRADE.
 53. PLACE NEW SOD.



DRAINAGE PLAN

- DRAINAGE NOTES** *NOTES APPLY TO THIS SHEET ONLY
21. PROVIDE DROP INLET PER C.31
 22. PROVIDE DROP INLET WITH INLET SUMP PER C.31
 23. PROVIDE CLEANOUT PER C.31
 24. PROVIDE DOWNSPOUT CONNECTION. C.31
 25. PROVIDE 4" STORM DRAIN, S=0.02 MIN. C.31
 26. PROVIDE 8" STORM DRAIN, S=0.02 MIN. C.31
 27. PROVIDE 8" SUBDRAIN. C.31
 28. PROVIDE DOWNSPOUT CONNECTION AT COLUMN. C.31

- GENERAL NOTES:**
1. RESTORE TO ORIGINAL CONDITION ANY AND ALL IRRIGATION PIPING, WIRING AND/OR HEADS DAMAGED BY STORM DRAIN PIPE TRENCHING.
 2. RESTORE TO ORIGINAL CONDITION ANY AND ALL PAINTED STRIPING DAMAGED BY ANY OF THE CONSTRUCTION PROCESSES. MATCH BOTH WIDTH AND COLOR.
 3. THE DOWNSPOUT CONNECTIONS SHALL BE PAINTED AS FOLLOWS:
 - 3.a. STEEL; GALVANIZED PRIMER DUNN-EDWARDS RUSTOLEUM BULLS EYE 123; KELLY MOORE 1711; SHERWIN WILLIAMS B66W310; OR AN APPROVED EQUAL. PLACE 1 COAT.
 - 3.b. STEEL; CAST PRIMER DUNN-EDWARDS BRP1200-1-RO; KELLY MOORE 1710; SHERWIN WILLIAMS B66W310; OR AN APPROVED EQUAL. PLACE 1 COAT.
 - 3.c. COLOR COAT DUNN-EDWARDS SSSL50 ACRYLIC; KELLY MOORE 5885; SHERWIN WILLIAMS A110-A8; OR AN APPROVED EQUAL. PLACE 2 COATS.
 4. PROVIDE NEW SOD IN AREAS DISTURBED BY CONSTRUCTION, OR AS SHOWN ON PLANS, WHICHEVER IS GREATER.
 5. POTHOLE EXISTING UTILITIES PRIOR TO START OF EXCAVATION AND TRENCHING WORK. PROTECT ALL EXISTING UTILITIES.

NO.	DESCRIPTION	ENG. COUNTY APPROVAL	DATE	HORIZONTAL SCALE:	BENCHMARK NO.	ELEV.
				AS NOTED		
DESIGNED:	GW	BY	DATE	VERTICAL SCALE:	JOB NO.:	15-019C
DRAWN:	ML			AS NOTED		
CHECKED:	GW					
DATE:	2/24/2015			ADDENDUM #1		
GRADING, DRAINAGE AND PAVING PLAN FOR HAMILTON ELEMENTARY SCHOOL 277 Capay Street Hamilton City, CA 95951 HAMILTON UNIFIED SCHOOL DISTRICT GLENN CO., CALIFORNIA						
C2.1						