

ABBREVIATIONS

- NOTE: NOT ALL ABBREVIATIONS MAY BE USED ON THESE PLANS.
- AB AGGREGATE BASE
 - AC ASPHALTIC CONCRETE
 - AD AREA DRAIN
 - APN ASSESSOR'S PARCEL NUMBER
 - ARV AIR RELEASE VALVE
 - ASB AGGREGATE SUB-BASE
 - BO BLOW-OFF VALVE
 - BV BUTTERFLY VALVE
 - BW BACK OF WALK
 - C/L CENTERLINE
 - CB CATCH BASIN
 - CL CORRUGATED METAL PIPE
 - CATV CABLE TELEVISION
 - CO CLEANOUT
 - COMM COMMUNICATION
 - CONC. CONCRETE
 - CONST. CONSTRUCT
 - CR CURB RETURN
 - CS CONCRETE SURFACE
 - DC DOUBLE CHECK VALVE
 - DDC DOUBLE DETECTOR CHECK VALVE
 - DG DECOMPOSED GRANITE
 - DI DROP INLET
 - DIA DIAMETER
 - DIP DUCTILE IRON PIPE
 - DWG DRAWING
 - DS DOWNSPOUT
 - E ELECTRIC
 - EP EDGE OF PAVEMENT
 - ESMT EASEMENT
 - EX EXISTING
 - FS FIRE SERVICE LINE
 - FDC FIRE DEPARTMENT CONNECTION
 - FL FLOWLINE
 - FM SANITARY SEWER FORCE MAIN
 - FF FINISHED FLOOR ELEVATION
 - FH FIRE HYDRANT
 - G GAS
 - GR GRATE ELEVATION
 - GRD GRADE ELEVATION
 - GV GATE VALVE
 - HB HOSE BIBB
 - HBD HEADER BOARD
 - HDPE HIGH DENSITY POLYETHYLENE PIPE
 - HP HIGH POINT
 - INV PIPE INVERT ELEVATION
 - JP JOINT UTILITY POLE
 - LF LINEAL FEET
 - LIP LIP OF GUTTER
 - LT LEFT
 - MS MOWSTRIP
 - NTS NOT TO SCALE
 - OH OVERHEAD
 - PCC PORTLAND CEMENT CONCRETE
 - PD PLANTER DRAIN
 - PIV POST INDICATOR VALVE
 - P/L PROPERTY LINE
 - PP POWER POLE
 - PUE PUBLIC UTILITY EASEMENT
 - PVC POLYVINYL CHLORIDE
 - RCP REINFORCED CONCRETE PIPE
 - R RADIUS
 - RIM MANHOLE RIM ELEVATION (SOLID COVER)
 - RP REDUCED PRESSURE BACKFLOW PREVENTER
 - RW RIGHT OF WAY
 - SCH SCHEDULE
 - SD STORM DRAIN
 - SDMH STORM DRAIN MANHOLE
 - SG SUBGRADE ELEVATION
 - SS SANITARY SEWER
 - SSMH SANITARY SEWER MANHOLE
 - STD STANDARD
 - S/W SIDEWALK
 - T TELEPHONE
 - TC TOP OF CURB
 - TD TRENCH DRAIN
 - TDCB TRENCH DRAIN CATCH BASIN
 - TP TELEPHONE POLE
 - TRW TOP OF RETAINING WALL
 - TSW TOP OF SEAT WALK
 - TW TOP OF WALK ELEVATION
 - U UTILITY
 - UG UNDERGROUND
 - UON UNLESS OTHERWISE NOTED
 - VCP VITRIFIED CLAY PIPE
 - W WATER
 - W/ WITH
 - W/O WITHOUT
 - WV WATER VALVE

LEGEND

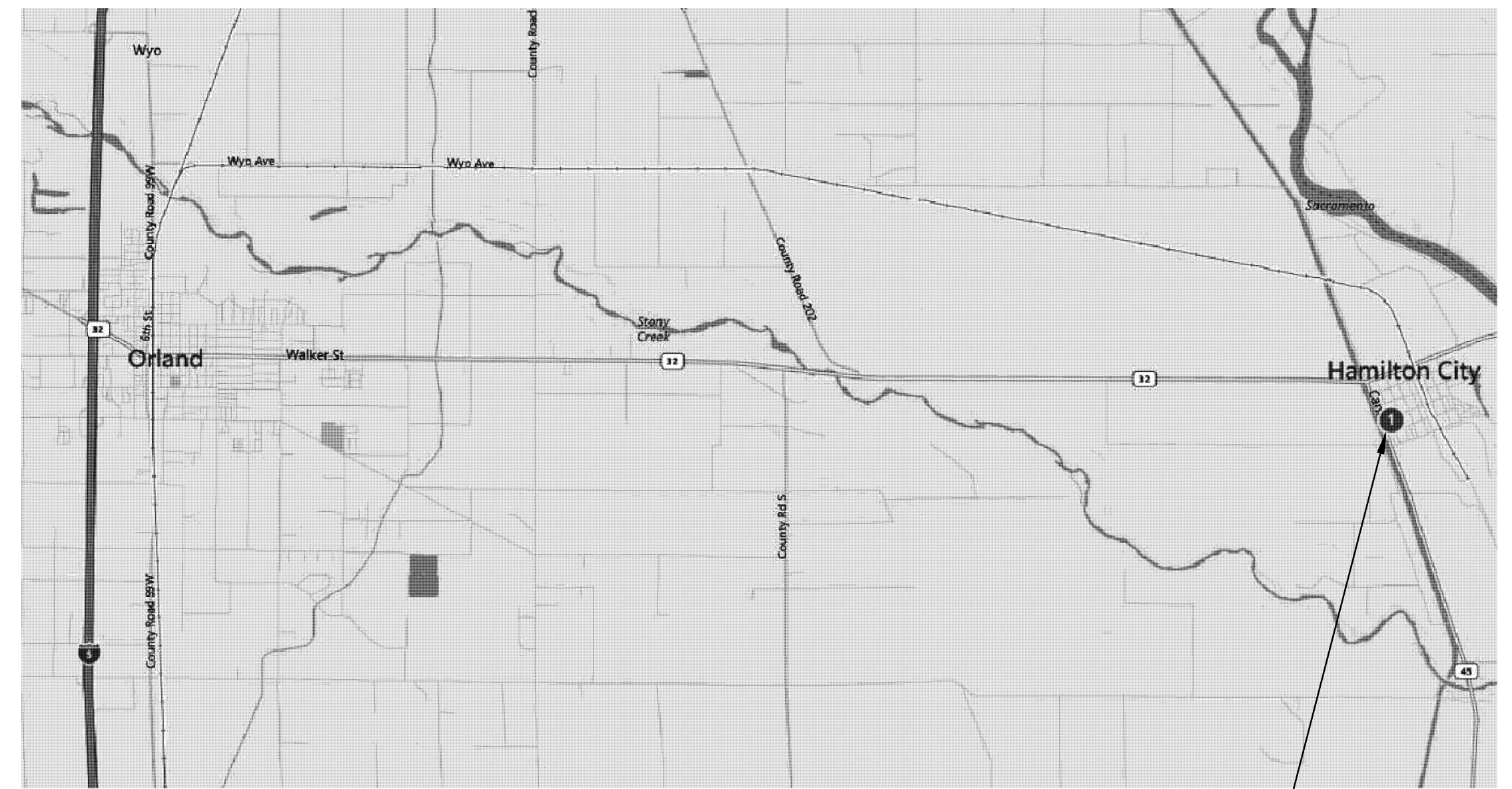
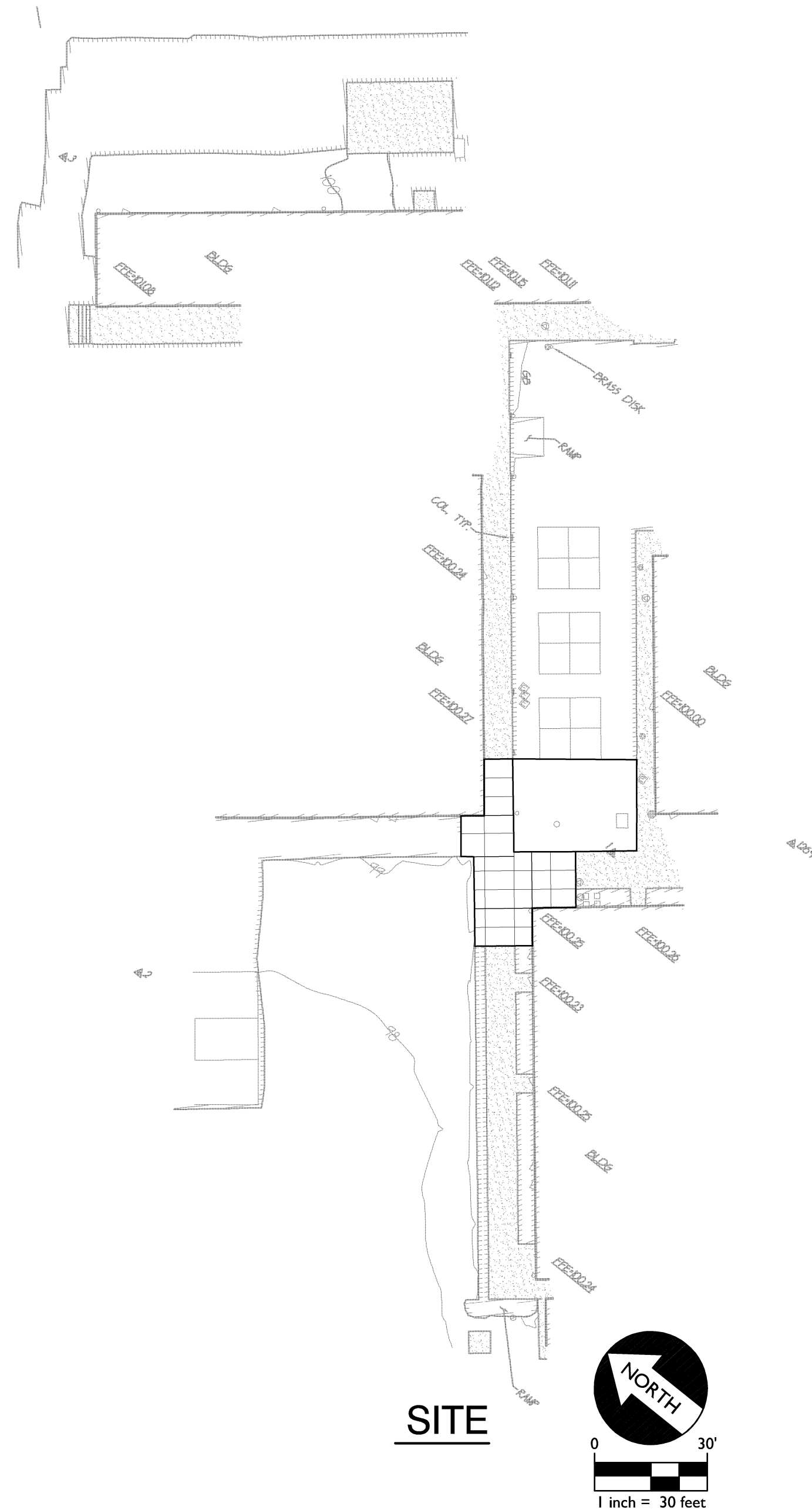
- NOTE: NOT ALL SYMBOLS MAY BE USED ON THESE PLANS.
- PROPOSED GRADING & DRAINAGE SYMBOLS:**
- 8" SD STORM DRAIN LINE (SIZE AND FLOW SHOWN)
 - STORM DRAIN MANHOLE (SDMH)
 - CATCH BASIN (CB)
 - DROP INLET (DI)
 - AREA DRAIN (AD)
 - PLANTER DRAIN (PD) OR FLOOR DRAIN (FD)
 - STORM DRAIN CLEANOUT
 - 99.99 ELEVATION
 - FF=100.00 FINISHED FLOOR ELEVATION
 - PAD=99.33 BUILDING PAD ELEVATION
 - CONCRETE SIDEWALK
 - GRADED DIRECTION FOR DRAINAGE FLOW
 - SWALE
 - SLOPE
 - TREE TO BE REMOVED
 - RETAINING WALL

HAMILTON ELEMENTARY SCHOOL

277 Capay Street

Hamilton City, CA 95951

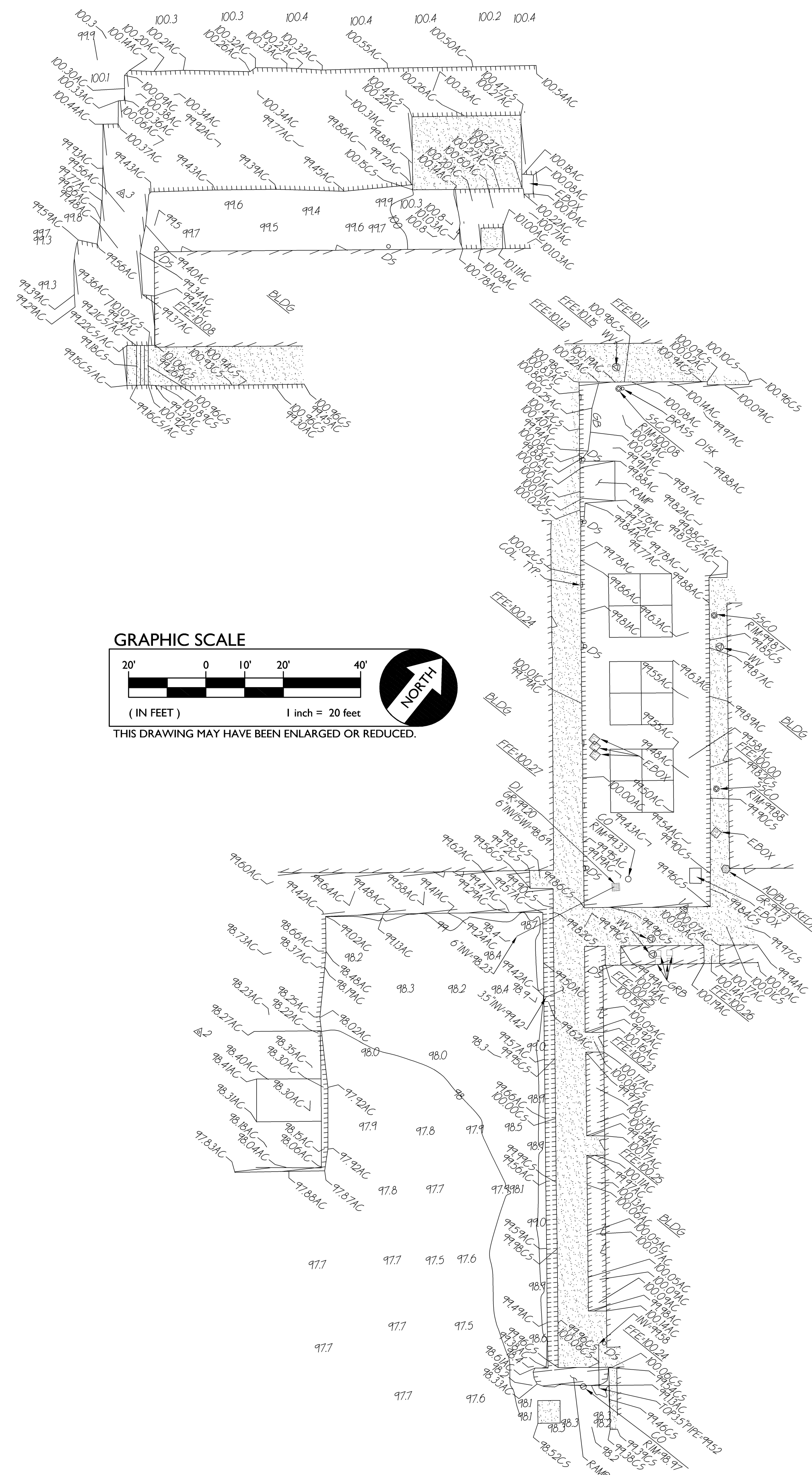
HAMILTON UNIFIED SCHOOL DISTRICT GLENN CO., CALIFORNIA



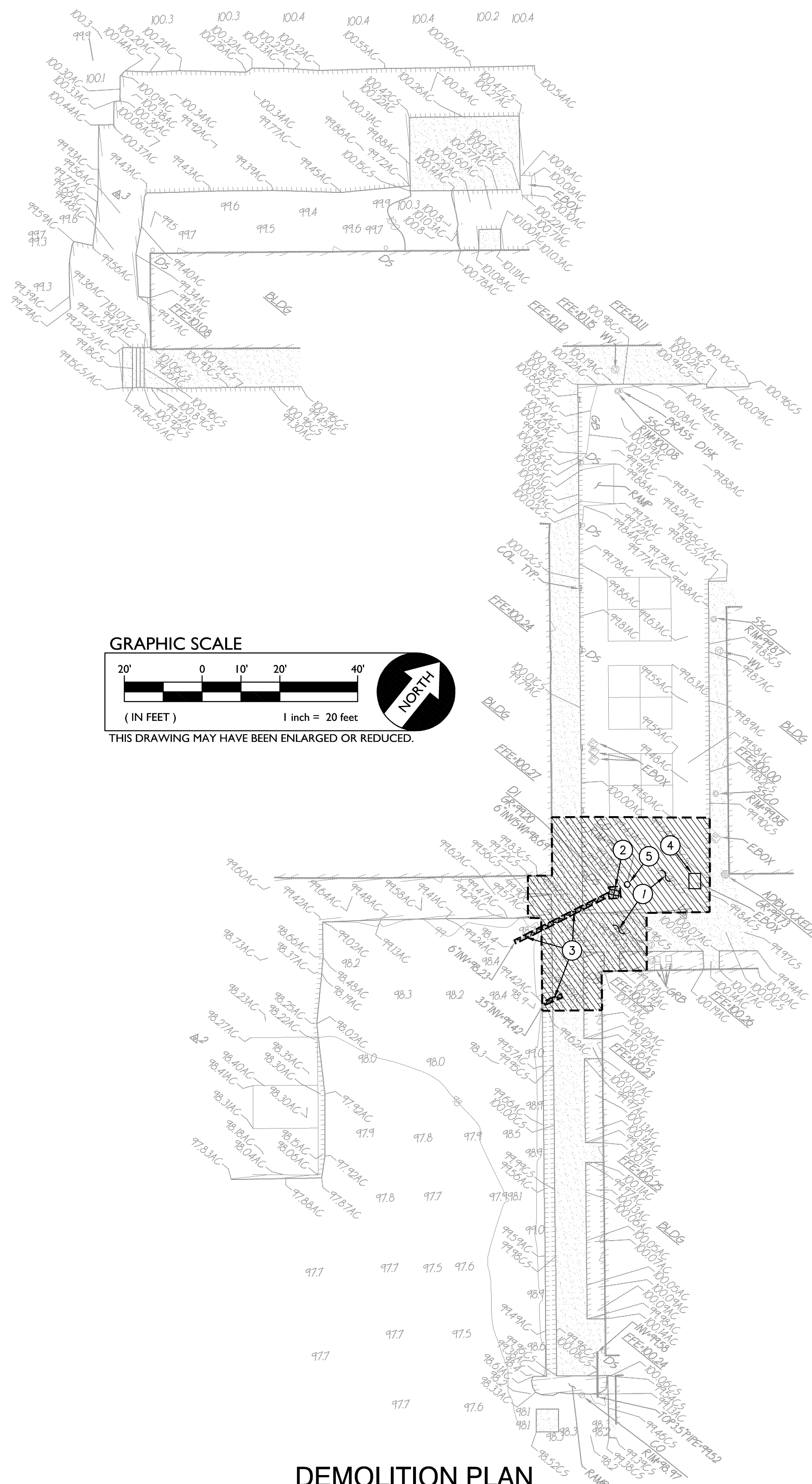
VICINITY MAP
NOT TO SCALE

PROJECT LOCATION
277 CAPAY AVENUE
HAMILTON CITY, CA 95951

<p>DESIGNED: GW</p> <p>DRAWN: ML</p> <p>CHECKED: GW</p> <p>DATE: 2/24/2015</p>	<p>NO. DESCRIPTION</p>	<p>ENG. COUNTY APPROVAL</p> <p>BY DATE</p>	<p>HORIZONTAL SCALE: A.P.N. BENCHMARK NO. --- ELEV. ---</p> <p>AS NOTED</p> <p>VERTICAL SCALE: AS NOTED</p> <p>JOB NO.: 15-019C</p>
<p>WCE WARREN CONSULTING ENGINEERS, INC. 117 WINDFIELD WAY, SUITE 110, (916) 985-1870 EL DORADO HILLS, CA 95962</p>			
<p>COVER SHEET FOR HAMILTON ELEMENTARY SCHOOL 277 Capay Street Hamilton City, CA 95951 HAMILTON UNIFIED SCHOOL DISTRICT GLENN CO., CALIFORNIA</p>			
<p>C0.1</p>			



TOPOGRAPHIC SURVEY



DEMOLITION PLAN

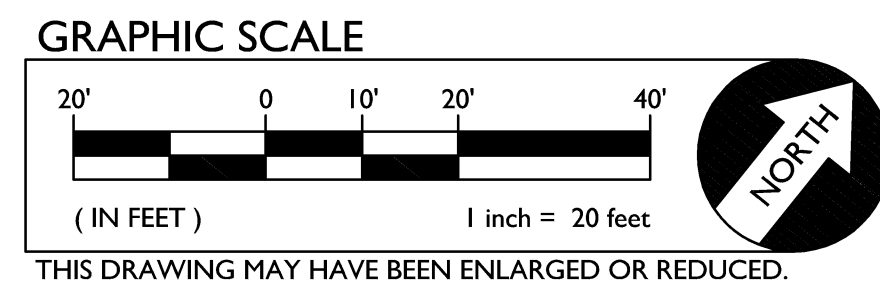
- DEMOLITION NOTES** *NOTES APPLY TO THIS SHEET ONLY
- 1. REMOVE EXISTING ASPHALT AND CONCRETE PAVING WITHIN AREA SHOWN.
 - 2. REMOVE EXISTING STORM DRAIN INLET.
 - 3. REMOVE EXISTING STORM DRAIN PIPE.
 - 4. PROTECT EXISTING ELECTRICAL BOX.
 - 5. PROTECT EXISTING CLEANOUT BOX.

GENERAL NOTES:

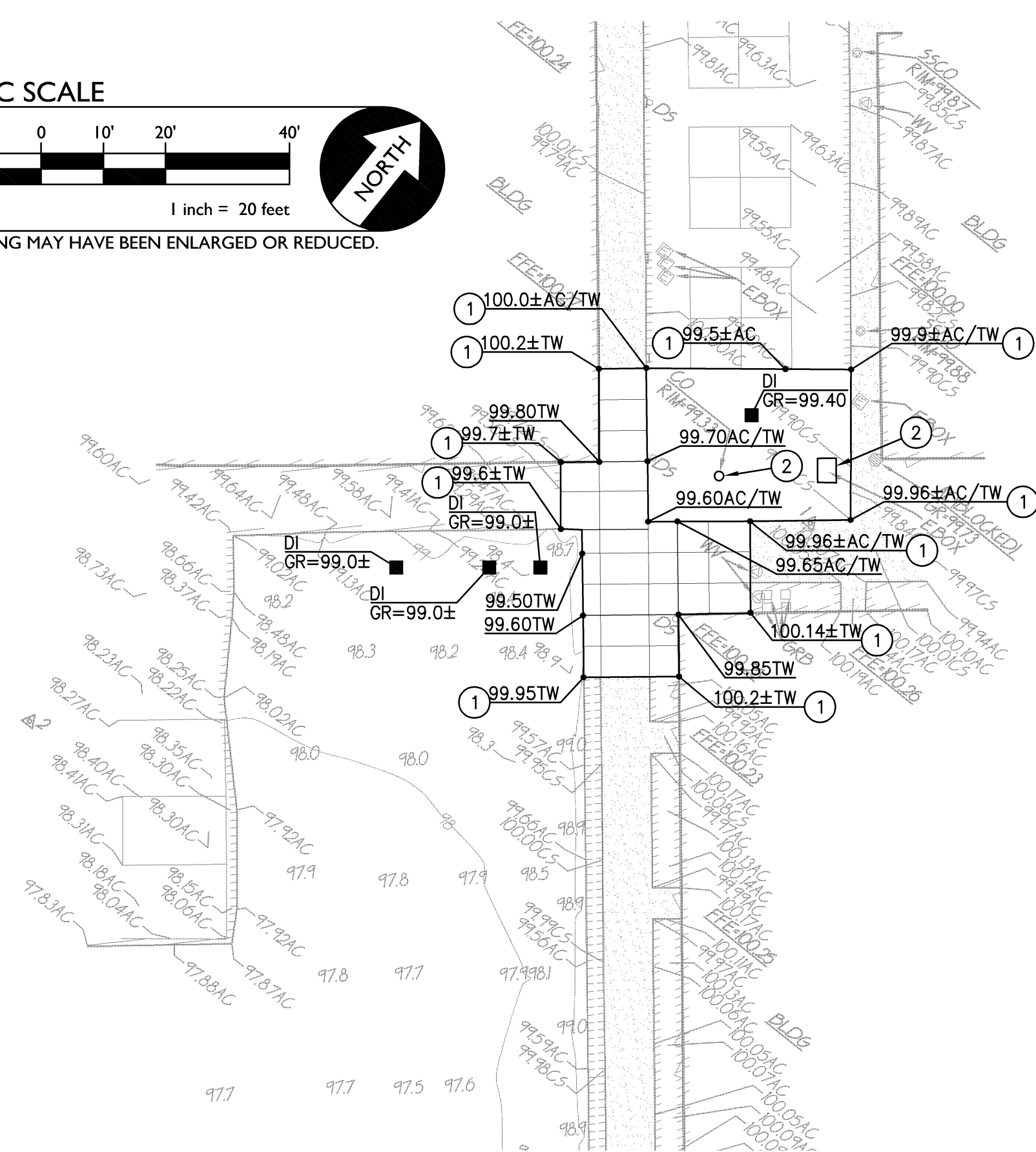
1. THE TYPES, LOCATIONS, SIZES, AND/OR DEPTHS OF EXISTING UNDERGROUND UTILITIES AS SHOWN ON THESE PLANS WERE OBTAINED FROM SOURCES OF VARYING RELIABILITY. THE CONTRACTOR IS CAUTIONED THAT ONLY ACTUAL EXCAVATION WILL REVEAL THE TYPES, EXTENT, SIZES, LOCATIONS AND DEPTHS OF SUCH UNDERGROUND UTILITIES. A REASONABLE EFFORT HAS BEEN MADE TO LOCATE AND DELINEATE ALL KNOWN UNDERGROUND UTILITIES. HOWEVER, WARREN CONSULTING ENGINEERS CAN ASSUME NO RESPONSIBILITY FOR THE COMPLETENESS OR ACCURACY OF ITS DELINEATION OF SUCH UNDERGROUND UTILITIES, NOR FOR THE EXISTENCE OF OTHER BURIED OBJECTS OR UTILITIES WHICH MAY BE ENCOUNTERED BUT WHICH ARE NOT SHOWN ON THESE PLANS. THE CONTRACTOR OR ANY SUBCONTRACTOR FOR THIS CONTRACT SHALL NOTIFY MEMBERS OF USA TWO(2) WORKING DAYS IN ADVANCE OF PERFORMING ANY EXCAVATION WORK BY CALLING TOLL FREE 1-800-227-2600.
2. CONTRACTOR TO FIELD LOCATE EXISTING UTILITIES PRIOR TO START OF EXCAVATION.



WARREN CONSULTING ENGINEERS, INC. 117 WINDFIELD WAY, SUITE 110 EL DORADO HILLS, CA 95762 (916) 985-1870	HORIZONTAL SCALE: A.P.N. _____ BENCHMARK NO. _____ ELEV. _____
	AS NOTED VERTICAL SCALE: AS NOTED JOB NO.: 15-019C
DESIGNED: GW DRAWN: ML CHECKED: GW DATE: 2/24/2015	NO. DESCRIPTION ENG. COUNTY APPROVAL BY DATE
	TOPOGRAPHIC SURVEY AND DEMOLITION PLAN FOR HAMILTON ELEMENTARY SCHOOL 277 Capay Street Hamilton City, CA 95951 HAMILTON UNIFIED SCHOOL DISTRICT GLENN CO., CALIFORNIA
C1.1	



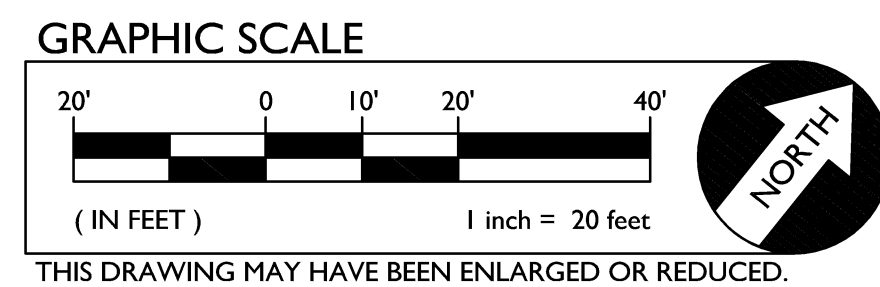
THIS DRAWING MAY HAVE BEEN ENLARGED OR REDUCED.



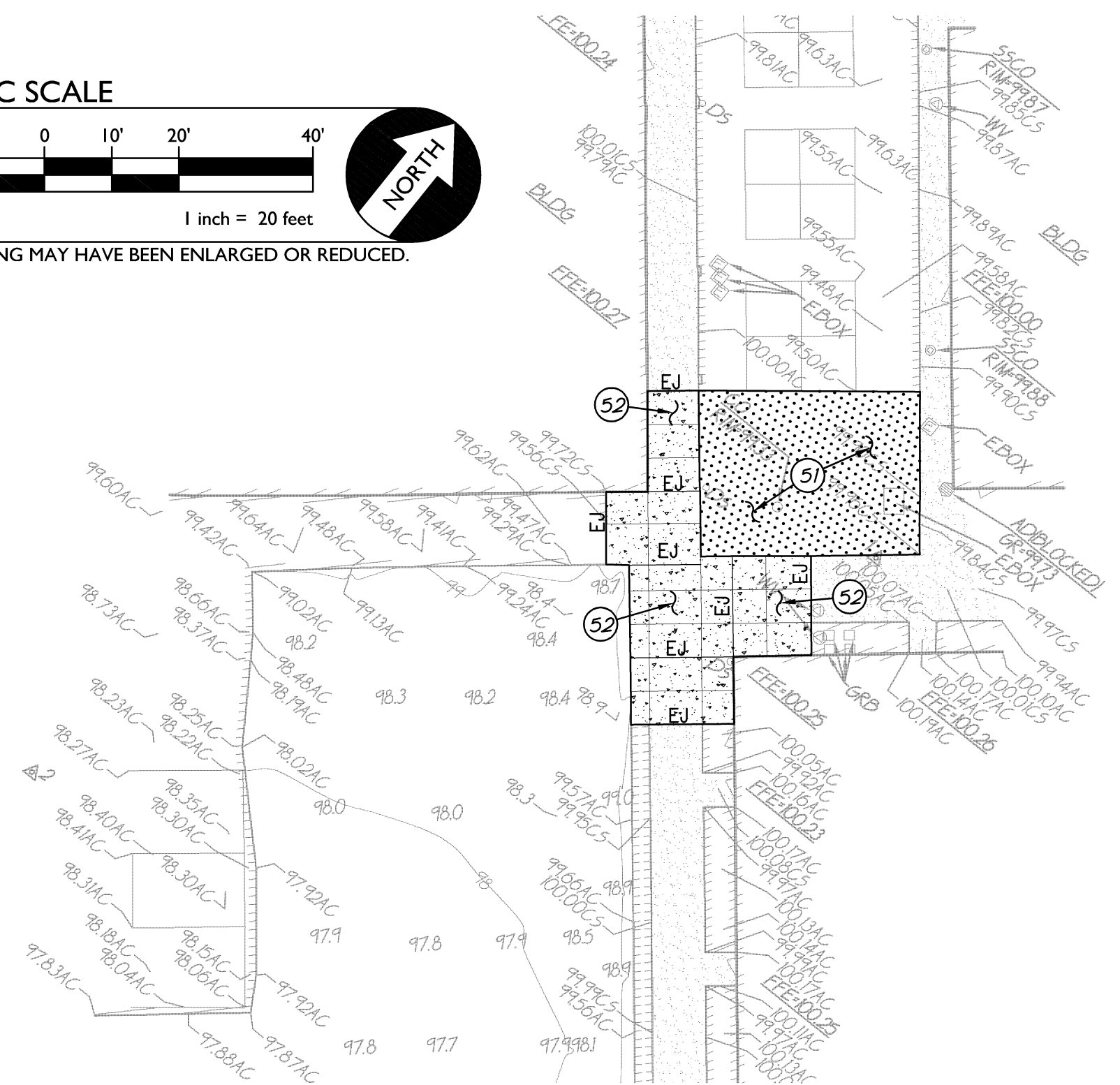
GRADING PLAN

GRADING NOTES *NOTES APPLY TO THIS SHEET ONLY

1. MATCH EXISTING GRADE/ELEVATION.
2. ADJUST TO FINISH GRADE.



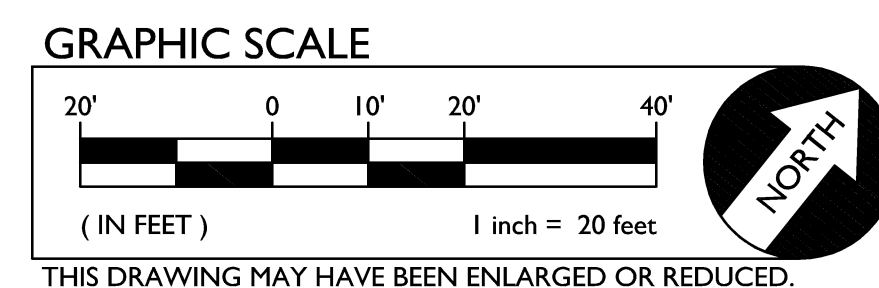
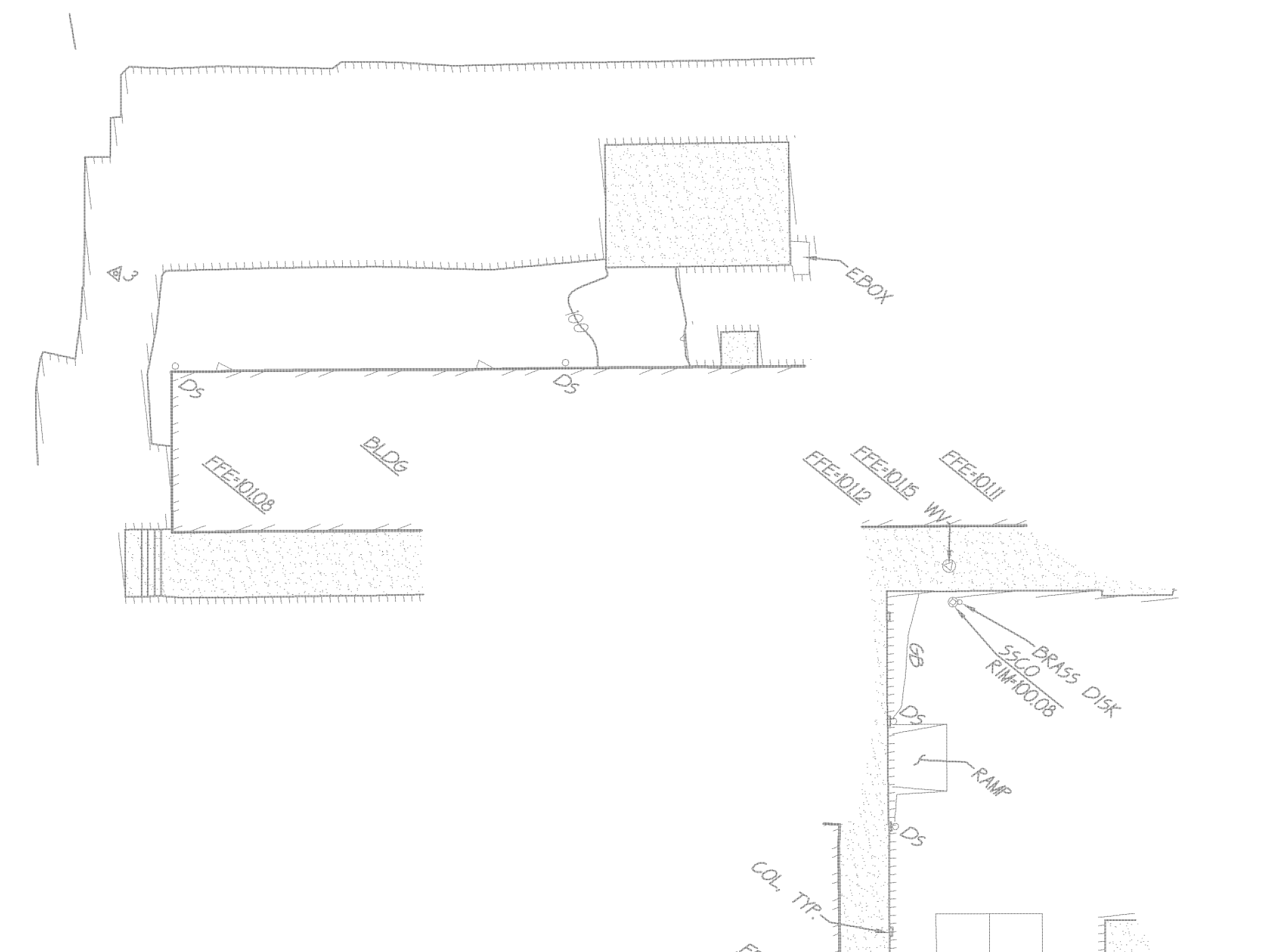
THIS DRAWING MAY HAVE BEEN ENLARGED OR REDUCED.



PAVING PLAN

PAVING NOTES *NOTES APPLY TO THIS SHEET ONLY

51. PLACE 3" AC OVER 8" AB ON COMPACTED SUBGRADE.
52. PLACE 4" PCC OVER 4" AB ON COMPACTED SUBGRADE.



THIS DRAWING MAY HAVE BEEN ENLARGED OR REDUCED.

GENERAL NOTES:

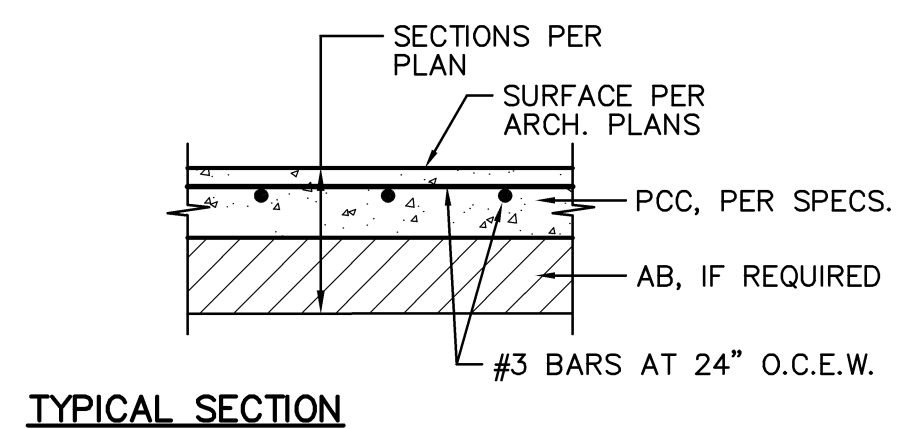
1. RESTORE TO ORIGINAL CONDITION ANY AND ALL IRRIGATION PIPING, WIRING AND/OR HEADS DAMAGED BY STORM DRAIN PIPE TRENCHING.
2. RESTORE TO ORIGINAL CONDITION ANY AND ALL PAINTED STRIPING DAMAGED BY ANY OF THE CONSTRUCTION PROCESSES. MATCH BOTH WIDTH AND COLOR.
3. THE DOWNSPOUT CONNECTIONS SHALL BE PAINTED AS FOLLOWS:
 - 3.a. STEEL; GALVANIZED PRIMER
DUNN-EDWARDS RUSTOLEUM BULLS EYE 123; KELLY MOORE 1711; SHERWIN WILLIAMS B66W310; OR AN APPROVED EQUAL. PLACE 1 COAT.
 - 3.b. STEEL; CAST PRIMER
DUNN-EDWARDS BRP1200-1-RO; KELLY MOORE 1710; SHERWIN WILLIAMS B66W310; OR AN APPROVED EQUAL. PLACE 1 COAT.
 - 3.c. COLOR COAT
DUNN-EDWARDS SSSL50 ACRYLIC; KELLY MOORE 5885; SHERWIN WILLIAMS A110-A8; OR AN APPROVED EQUAL. PLACE 2 COATS.

DRAINAGE PLAN

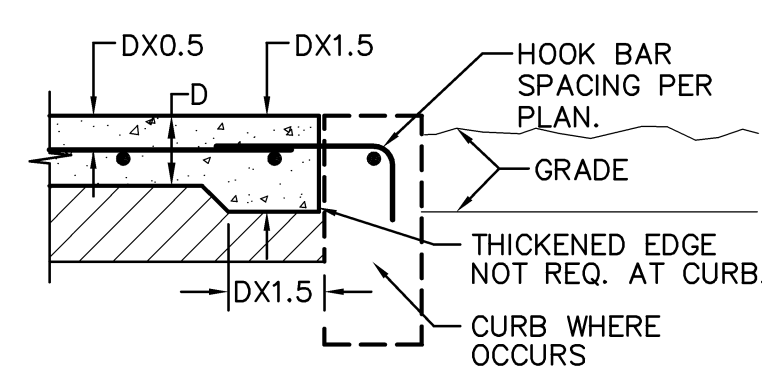
DRAINAGE NOTES *NOTES APPLY TO THIS SHEET ONLY

21. PROVIDE DROP INLET PER $\frac{1}{C31}$
22. PROVIDE DROP INLET WITH INLET SUMP PER $\frac{2}{C31}$
23. PROVIDE CLEANOUT PER $\frac{3}{C31}$
24. PROVIDE DOWNSPOUT CONNECTION. $\frac{4}{C31}$
25. PROVIDE 4" STORM DRAIN, S=0.02 MIN. $\frac{5}{C31}$
26. PROVIDE 8" STORM DRAIN, S=0.02 MIN. $\frac{5}{C31}$
27. PROVIDE 8" SUBDRAIN. $\frac{6}{C31}$

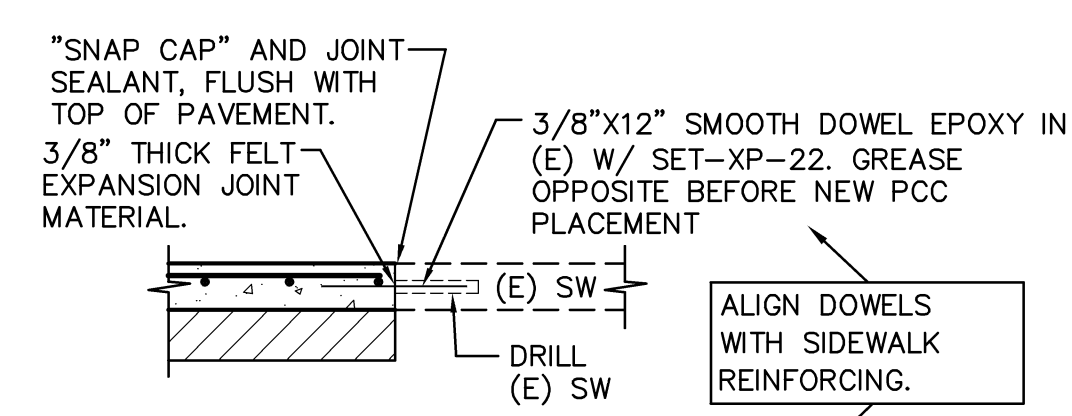
DESIGNED: GW	DRAWN: ML	CHECKED: GW	DATE: 2/24/2015	NO. DESCRIPTION	ENG. COUNTY APPROVAL	HORIZONTAL SCALE: AS NOTED	VERTICAL SCALE: AS NOTED	JOB NO.: 15-019C	BENCHMARK NO.: --	ELEV. --
<p>WARREN CONSULTING ENGINEERS, INC. 117 WINDFIELD WAY, SUITE 110 EL DORADO HILLS, CA 95762 (916) 985-1870</p>										
<p>GRADING, DRAINAGE AND PAVING PLAN FOR HAMILTON ELEMENTARY SCHOOL 277 Capay Street Hamilton City, CA 95951 HAMILTON UNIFIED SCHOOL DISTRICT GLENN CO., CALIFORNIA</p>										
C2.1										



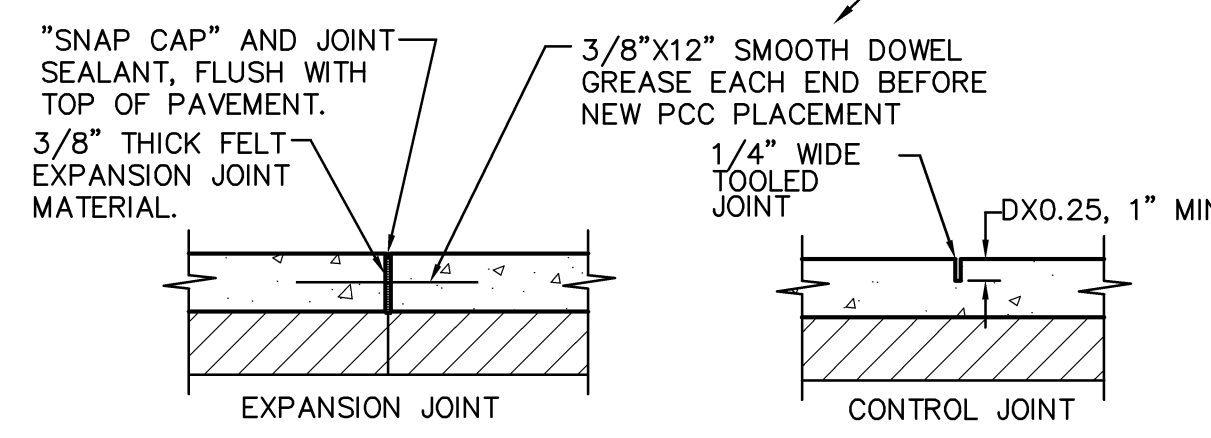
TYPICAL SECTION



TYPICAL THICKENED EDGE



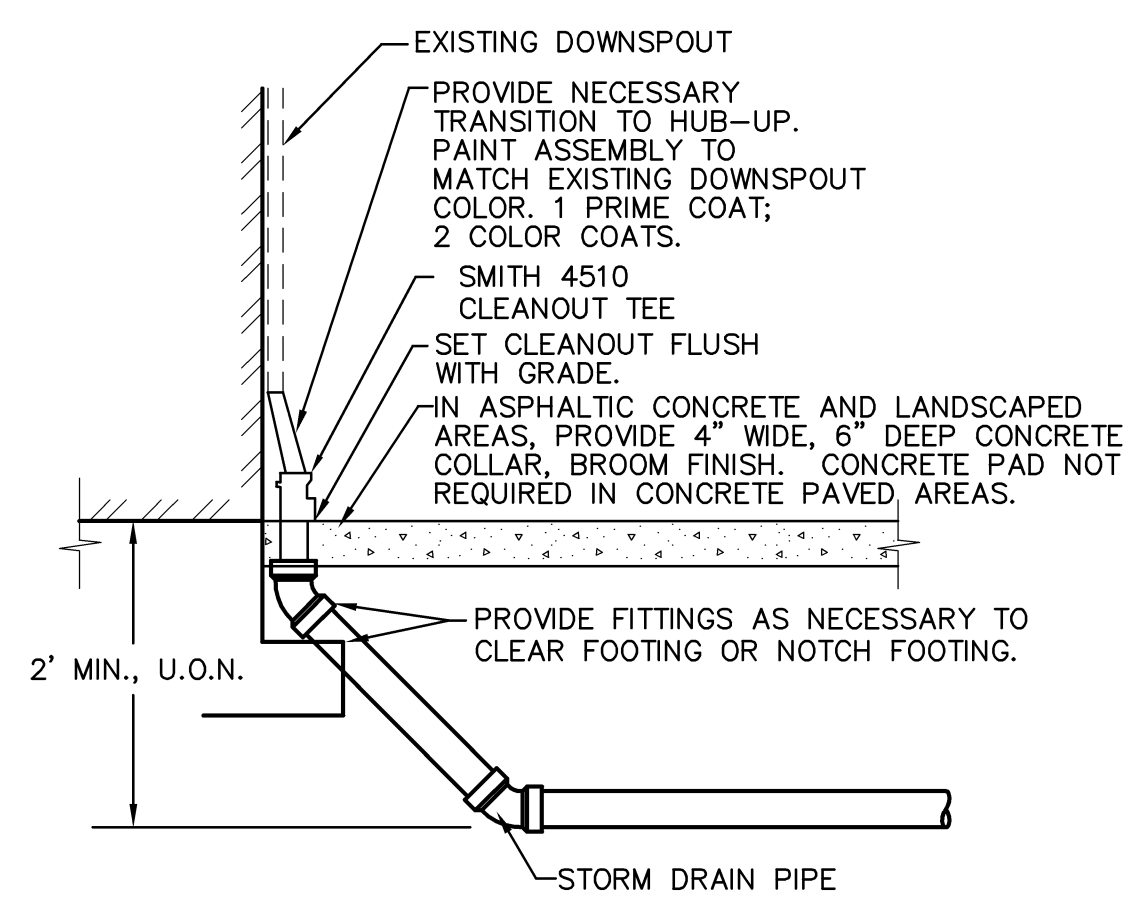
CONNECTION TO (E) CONCRETE



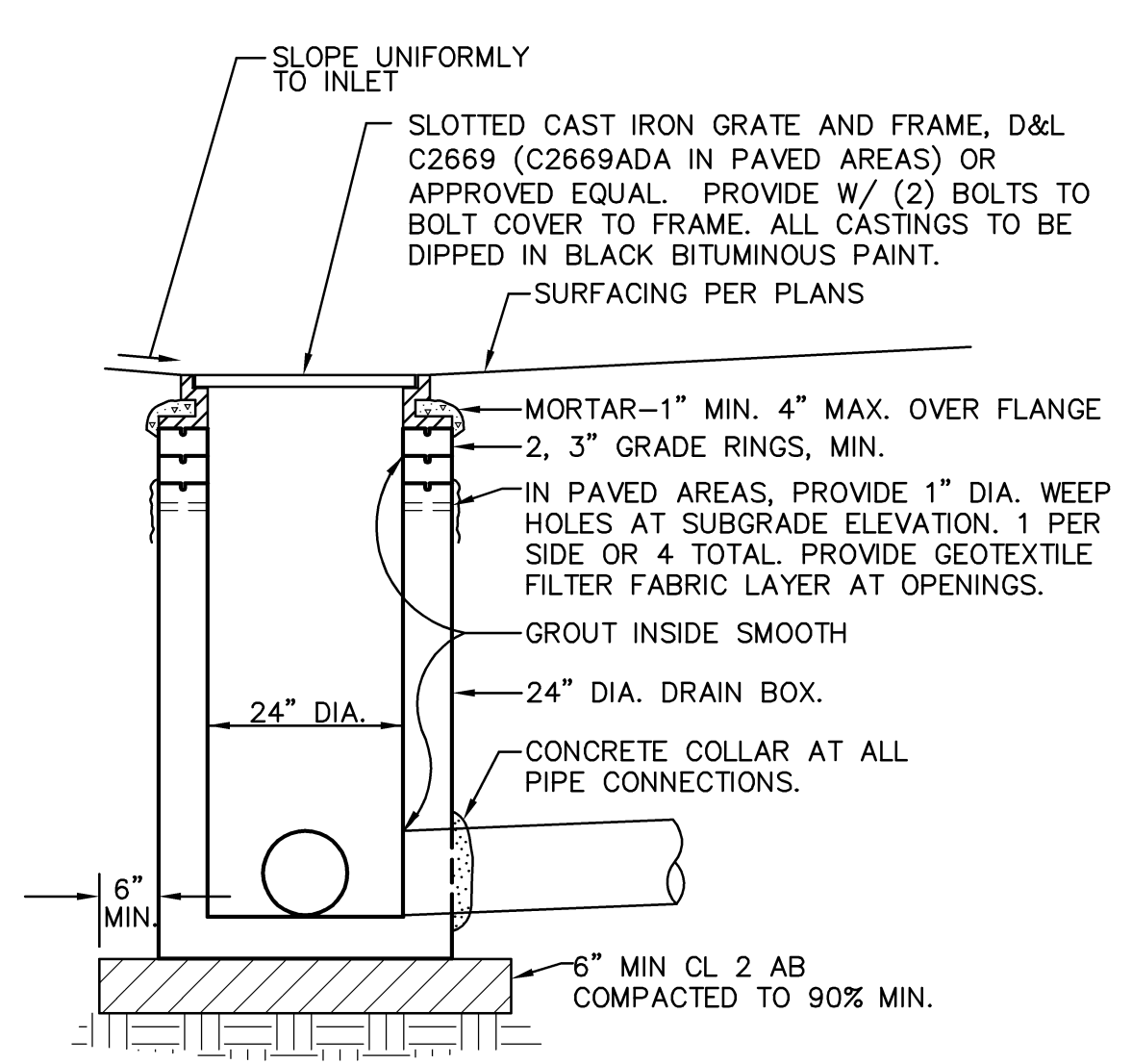
TYPICAL JOINTS

NOTE:
PROVIDE FELT EXPANSION JOINTS AT 20 FEET O.C.
PROVIDE CONTROL JOINTS AT 10 FEET O.C. U.O.N.

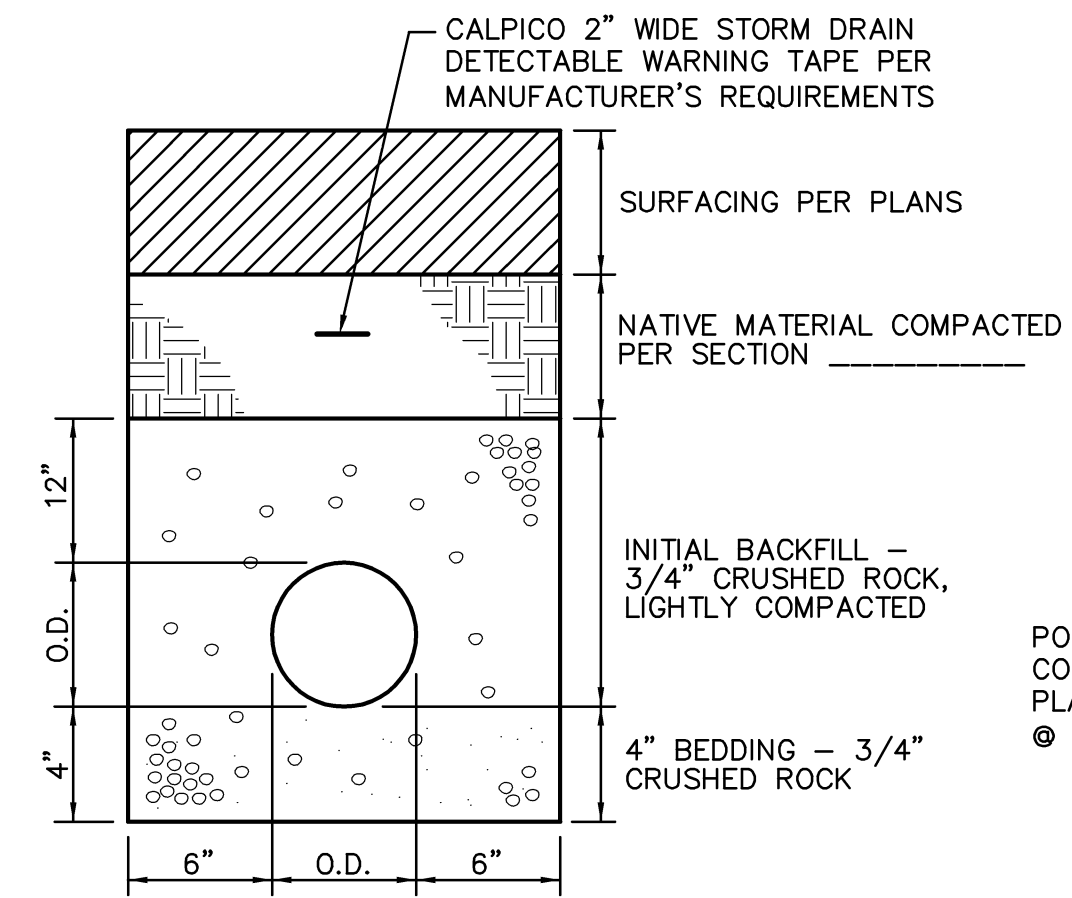
7 CONCRETE SIDEWALK
C3.1 NO SCALE



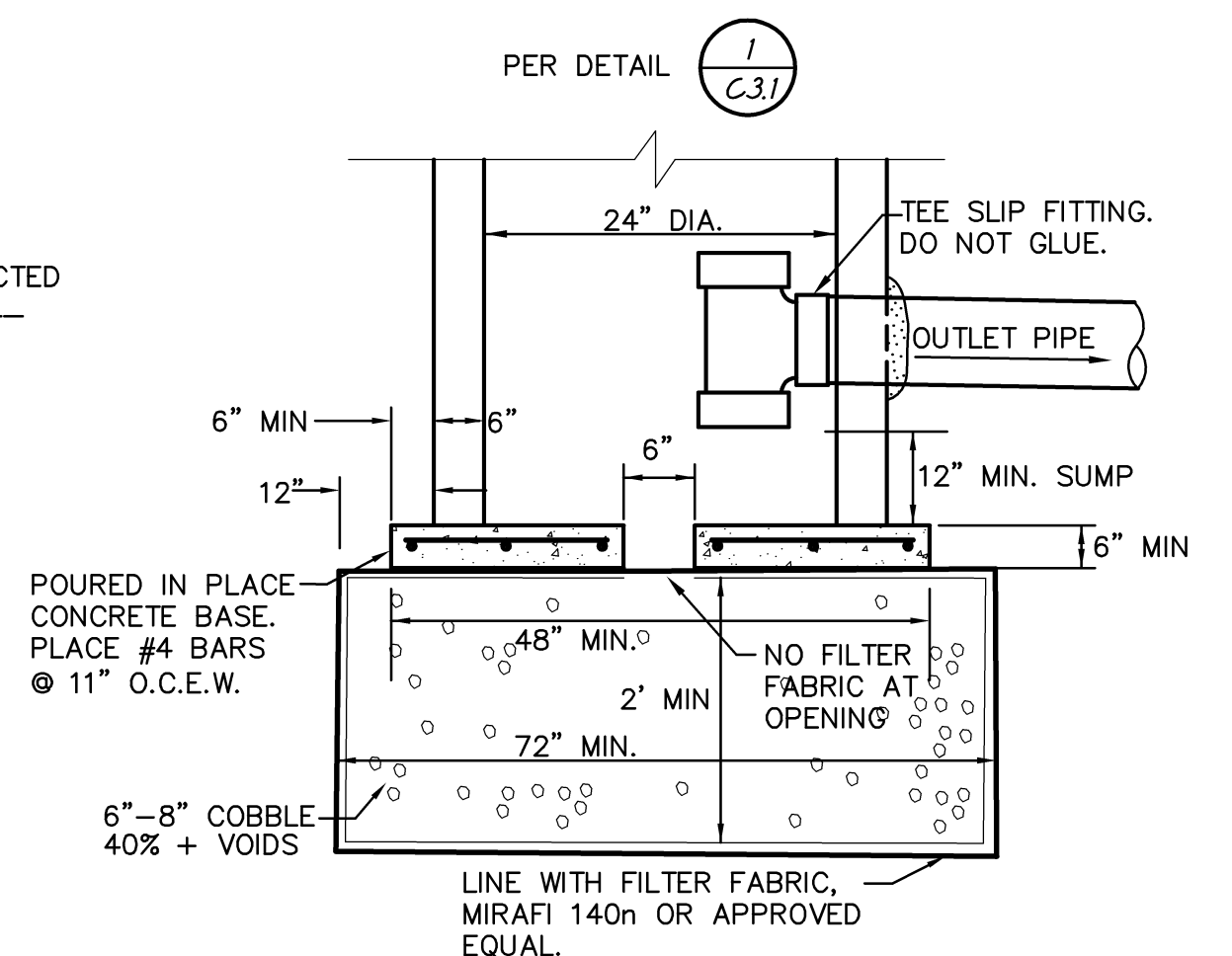
4 DOWNSPOUT CONNECTION
C3.1 NO SCALE



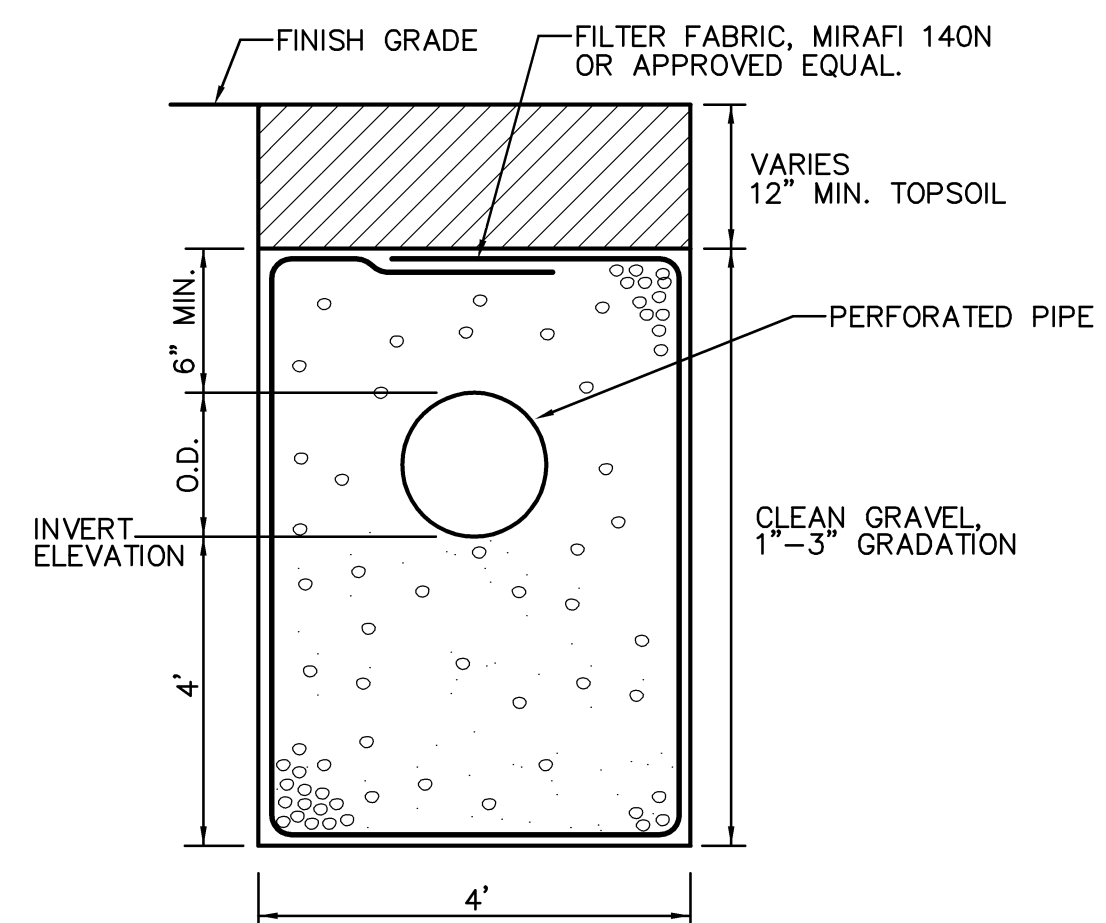
1 DROP INLET
C3.1 NO SCALE



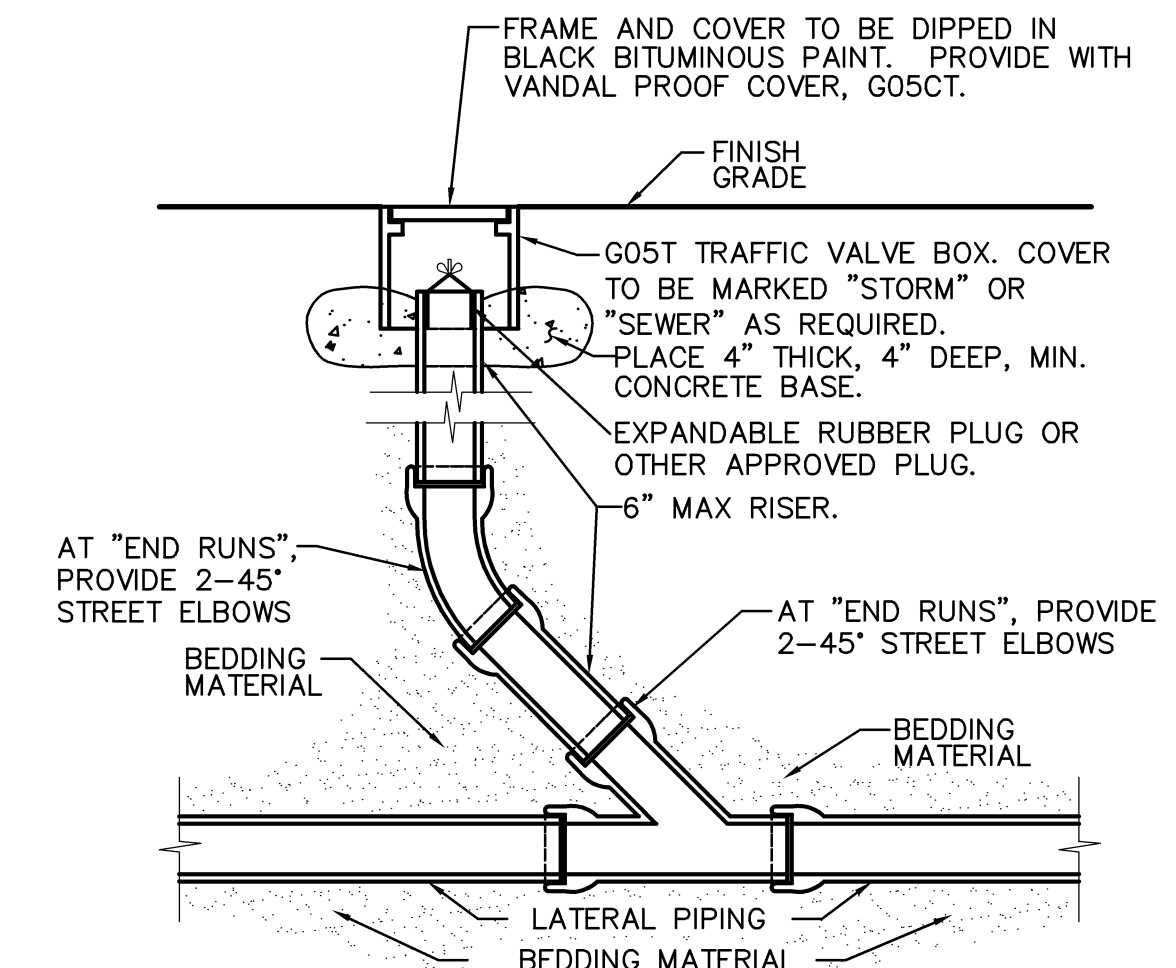
5 STORM DRAIN TRENCH
C3.1 NO SCALE



2 INLET SUMP
C3.1 NO SCALE



6 SUBDRAIN TRENCH DETAIL
C3.1 NO SCALE



3 CLEANOUT
C3.1 NO SCALE

HORIZONTAL SCALE: AS NOTED		VERTICAL SCALE: AS NOTED		JOB NO.: 15-019C	
AP.N. BENCHMARK NO. --- ELEV. ---		DATE		DATE	
APPROVAL		BY		DATE	
COUNTY		APPROVAL		DATE	
NO. DESCRIPTION		DESIGNED: GW		DRAWN: ML	
		CHECKED: GW		DATE: 2/24/2015	
		REGISTERED PROFESSIONAL ENGINEER			
				WARREN CONSULTING ENGINEERS, INC. 117 WINDFIELD WAY, SUITE 110 EL DORADO HILLS, CA 95762 (916) 985-1870	
DETAILS SHEET FOR		HAMILTON ELEMENTARY SCHOOL		277 Capay Street Hamilton City, CA 95951	
		HAMILTON UNIFIED SCHOOL DISTRICT		GLENN CO., CALIFORNIA	
				C3.1	