

Nichols, Melburg & Rossetto
ARCHITECTS + ENGINEERS



HAMILTON UNIFIED SCHOOL DISTRICT PLANNING FOR THE FUTURE

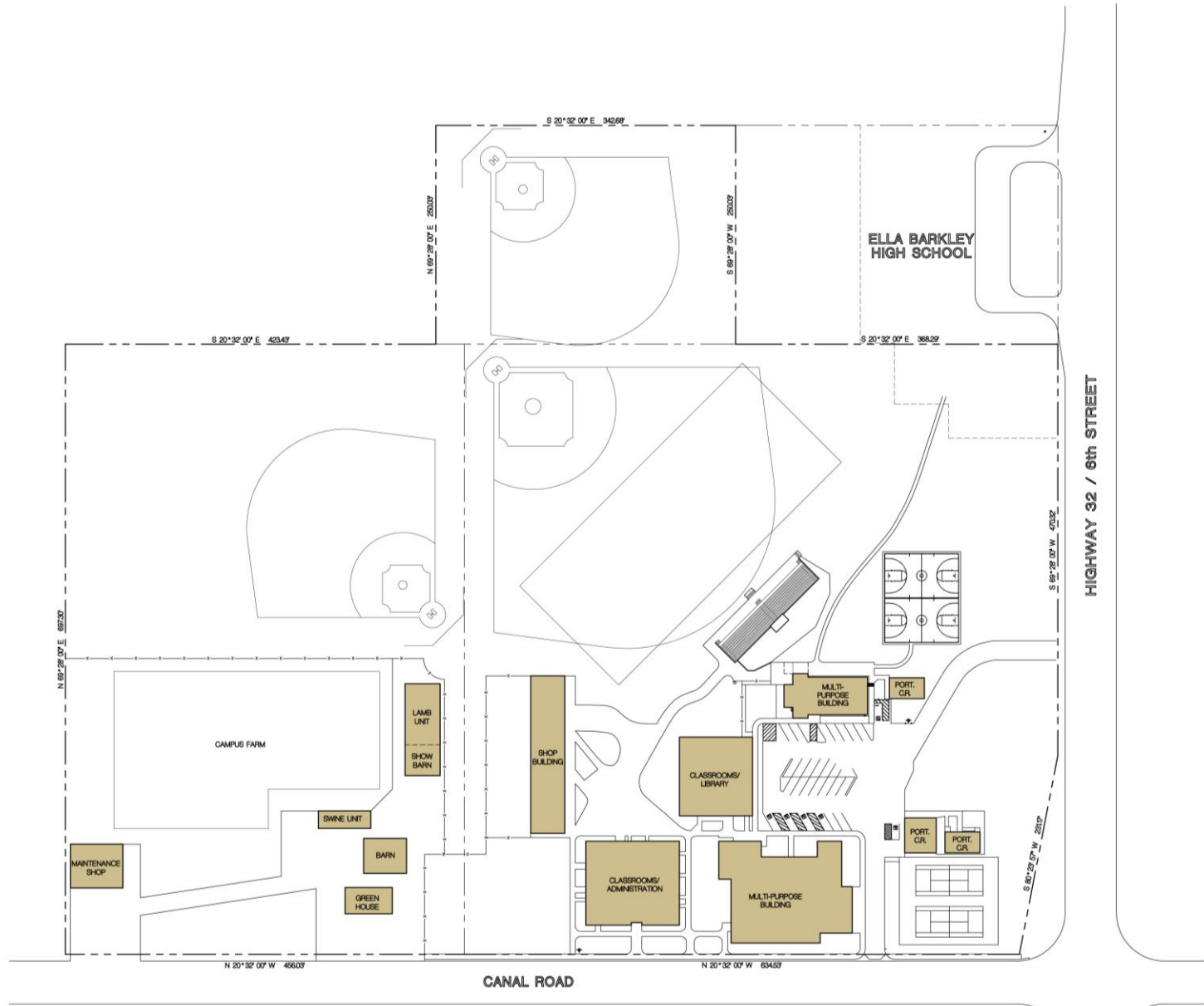
Board Presentation

February 17, 2015



**EXISTING HIGH SCHOOL: 20 ACRES
STATE RECOMMENDED SIZE FOR
ANTICIPATED ENROLLMENT: 30 ACRES**

**EXISTING ELEMENTARY SCHOOL: 4.7 ACRES
STATE RECOMMENDED SIZE FOR
ANTICIPATED ENROLLMENT: 22 ACRES**



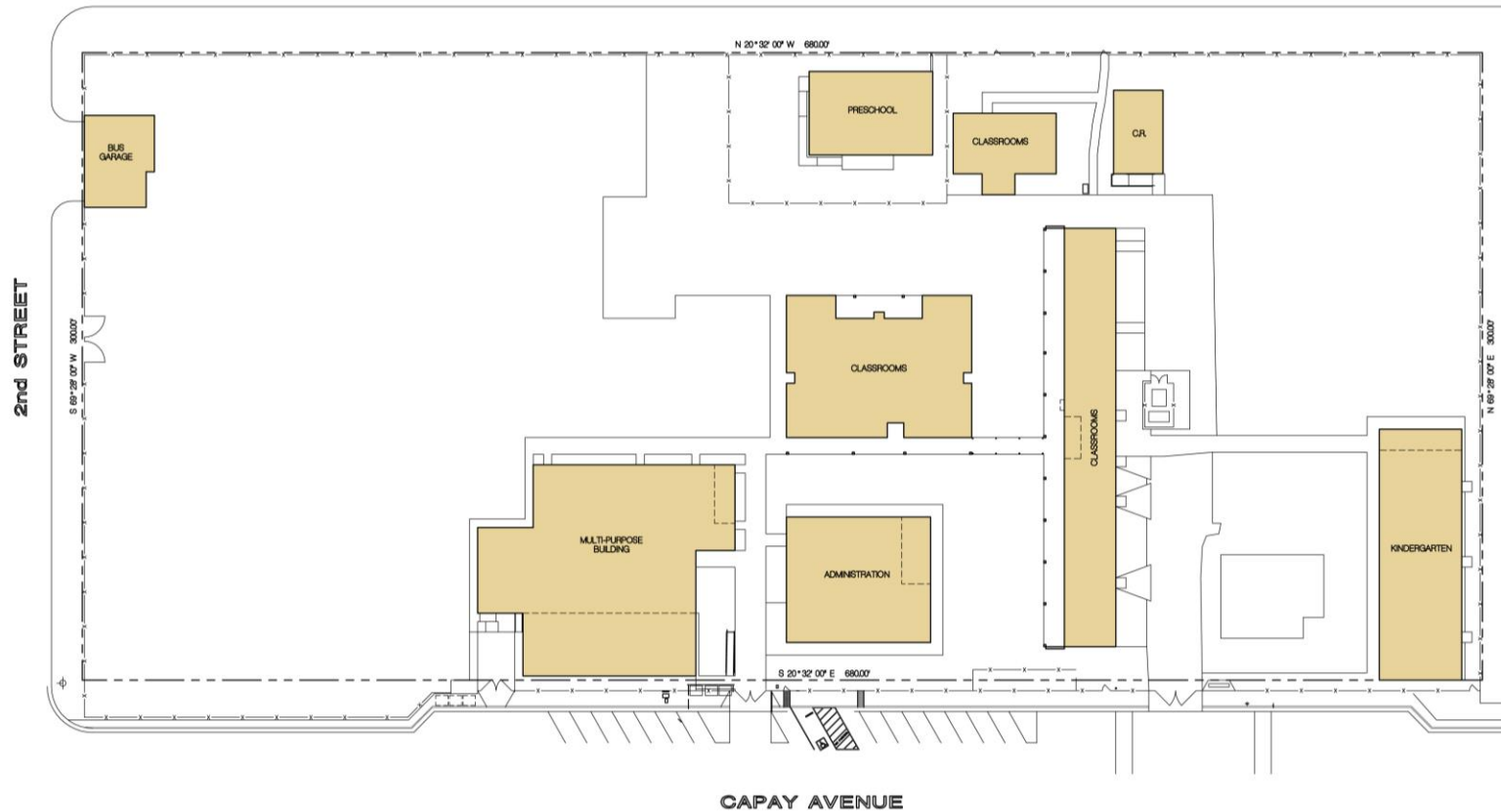
EXISTING SITE PLAN
 20.01 ACRES
 SCALE 1" = 60'-0"



HAMILTON HIGH SCHOOL EXISTING SITE



CANAL STREET / STATE HIGHWAY 45



EXISTING SITE PLAN

4.68 ACRES

SCALE 1" = 30'-0"

HAMILTON ELEMENTARY SCHOOL EXISTING SITE

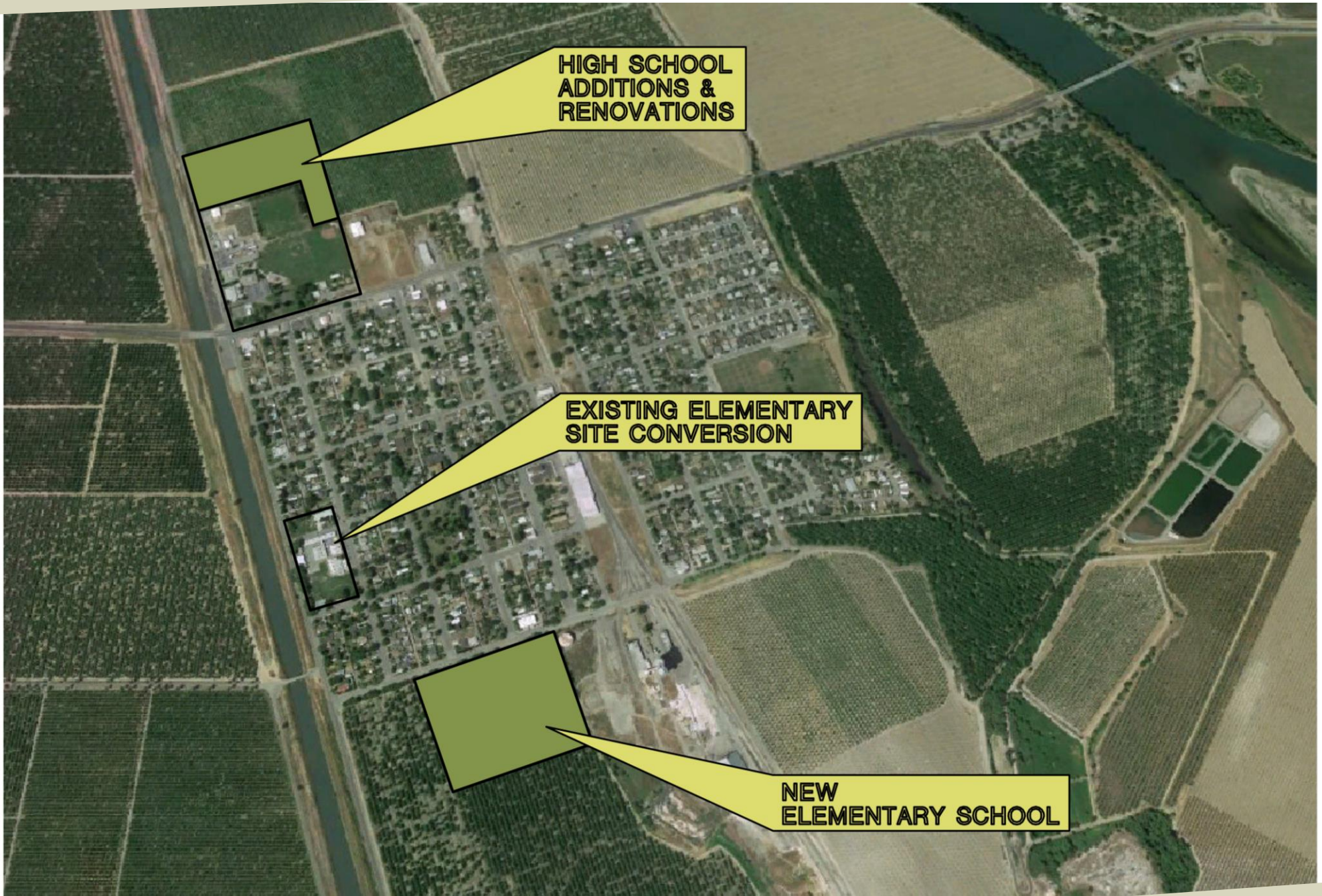




**PROJECTED AREA OF GROWTH
OVER THE NEXT 10 YEARS
600 HOMES**

**PROJECTED AREA OF
NEW RETAIL**

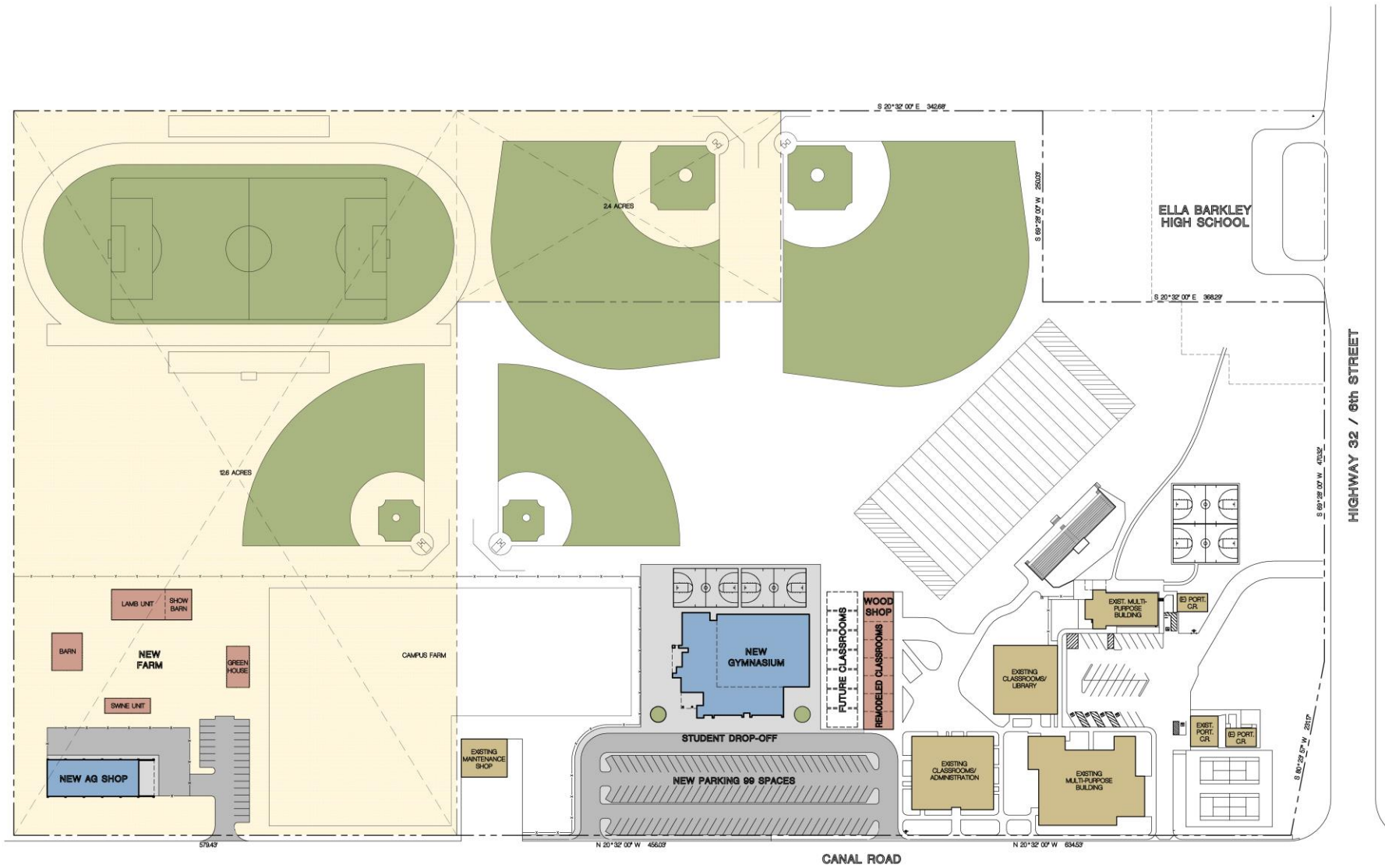
**PROJECTED AREA OF GROWTH
CONSTRUCTION ESTIMATED TO
START WITHIN NEXT 18 MONTHS
250 HOMES**



**HIGH SCHOOL
ADDITIONS &
RENOVATIONS**

**EXISTING ELEMENTARY
SITE CONVERSION**

**NEW
ELEMENTARY SCHOOL**



- ADDITIONAL PROPERTY ACQUISITION
- NEW CONSTRUCTION
- EXISTING BUILDINGS TO BE REMODELED/RELOCATED
- EXISTING BUILDINGS TO REMAIN



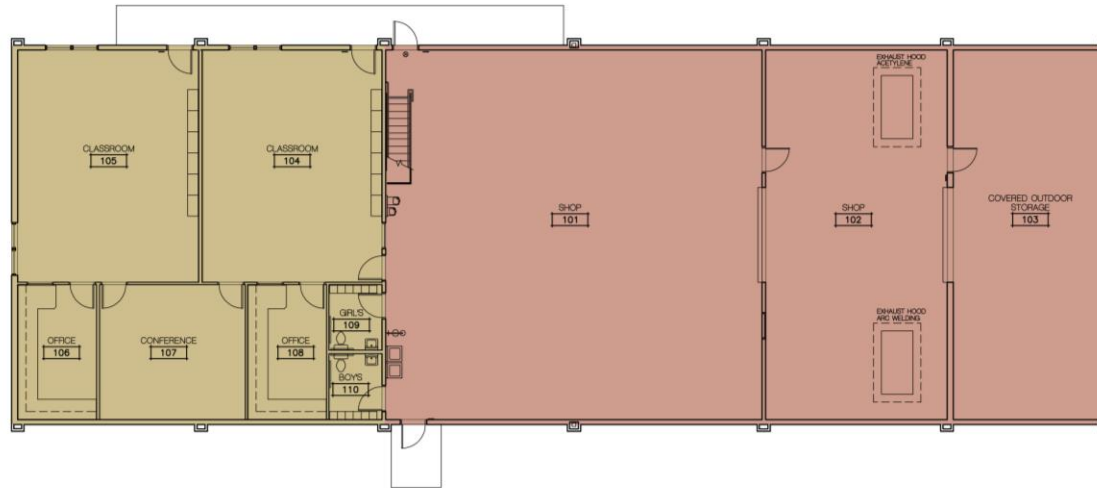
MASTER SITE PLAN

2001 + 15 = 3501 ACRES SCALE 1" = 60'-0"



HAMILTON HIGH SCHOOL IMPROVEMENTS





NEW AG SHOP FLOOR PLAN

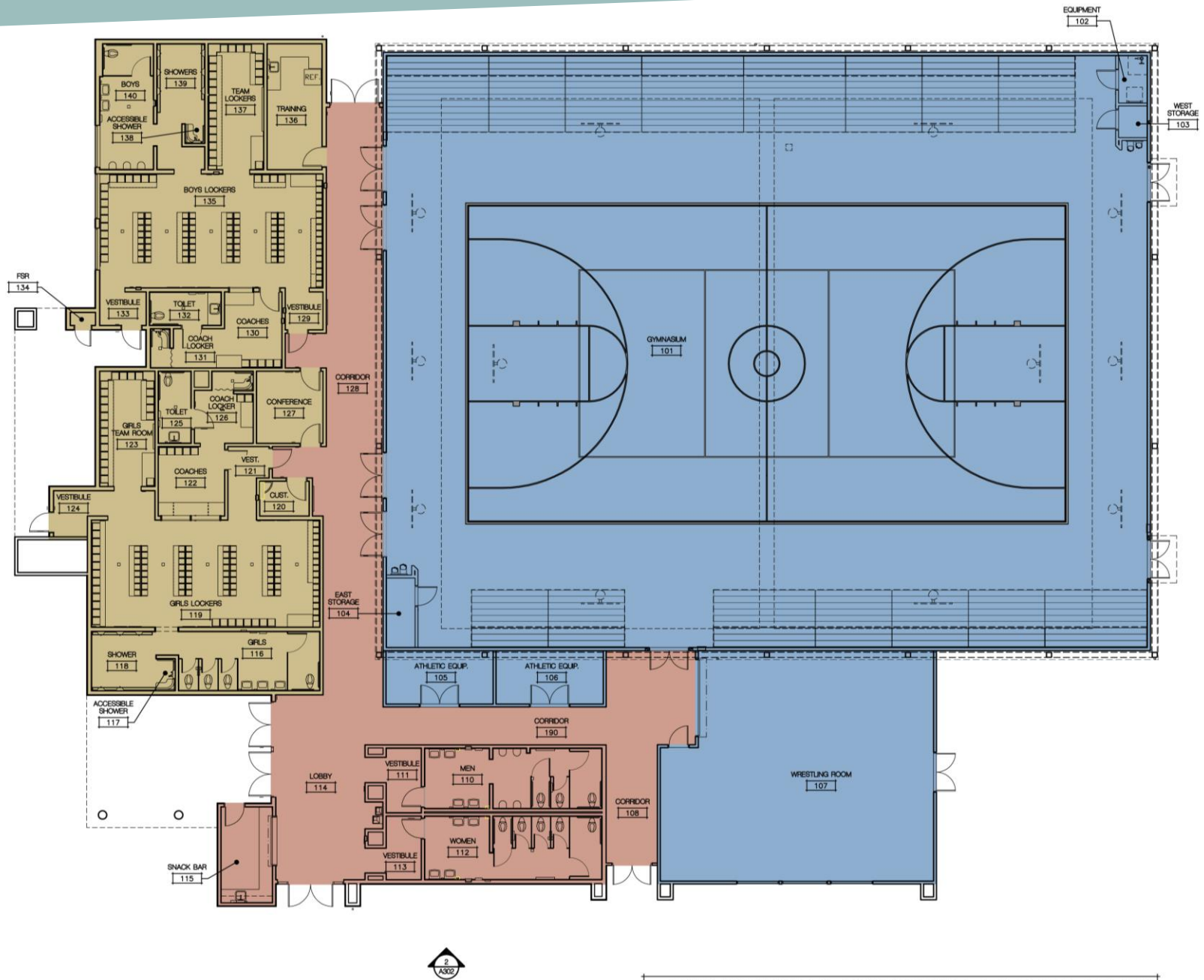
6876 SQUARE FEET

SCALE 1/8" = 1'-0"



HAMILTON HIGH SCHOOL NEW AG SHOPS





GYMNASIUM BUILDING FLOOR PLAN
 20,068 SQUARE FEET
 SCALE: 1/8" = 1'-0"



HAMILTON HIGH SCHOOL NEW GYMNASIUM

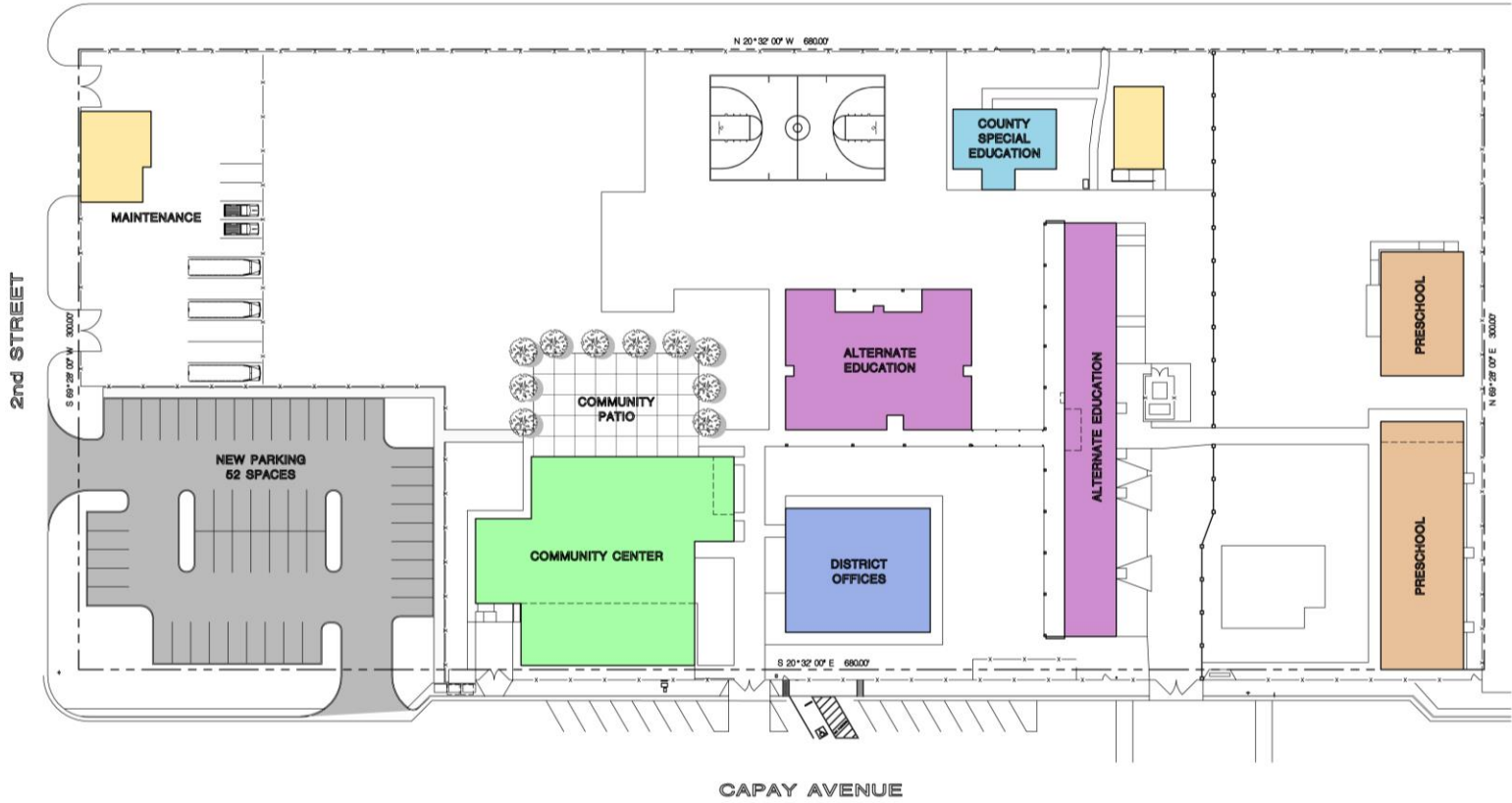




NEW GYMNASIUM EXAMPLES



CANAL STREET / STATE HIGHWAY 45

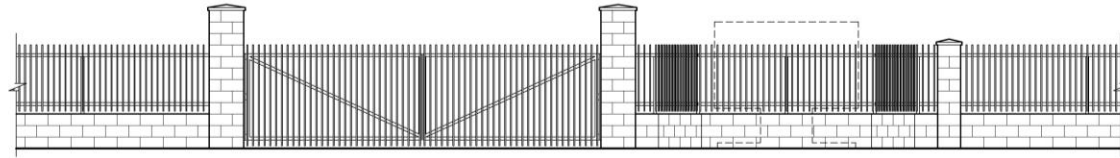


 **MASTER SITE PLAN**
468 ACRES SCALE 1" = 30'-0"



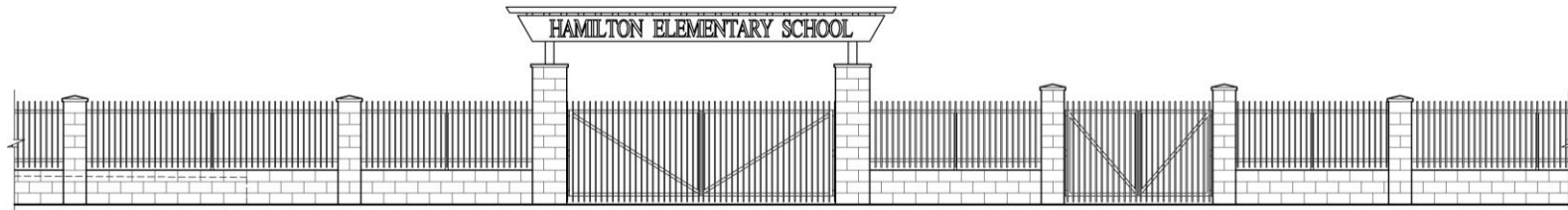
HAMILTON ELEMENTARY SCHOOL RE-PURPOSED MULTI-FACILITY IMPROVEMENTS





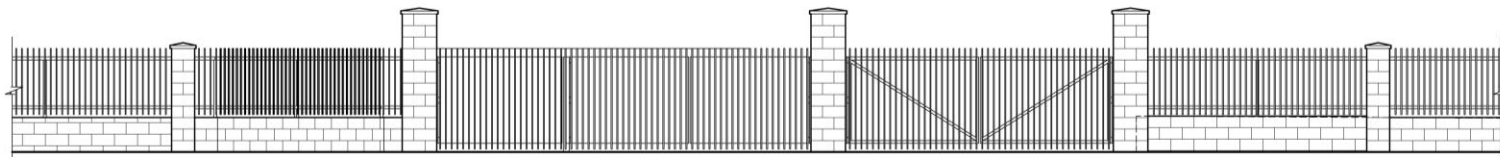
①

STREET ELEVATION AT MARQUEE



②

STREET ELEVATION AT MAIN ENTRANCE



③

STREET ELEVATION AT KITCHEN

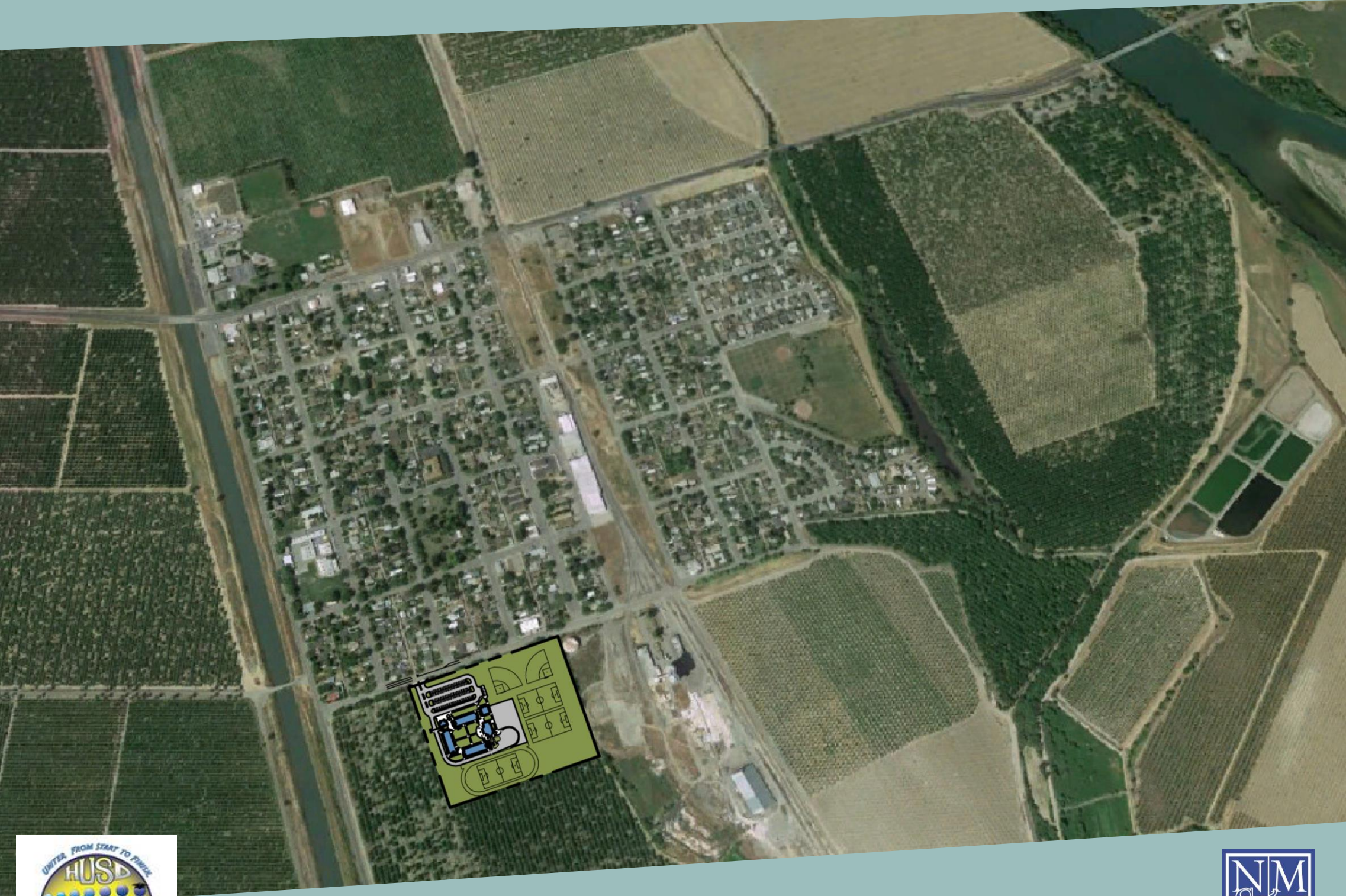
STREET ELEVATIONS

SCALE 1/4" = 1'-0"



HAMILTON ELEMENTARY SCHOOL STREET ELEVATIONS

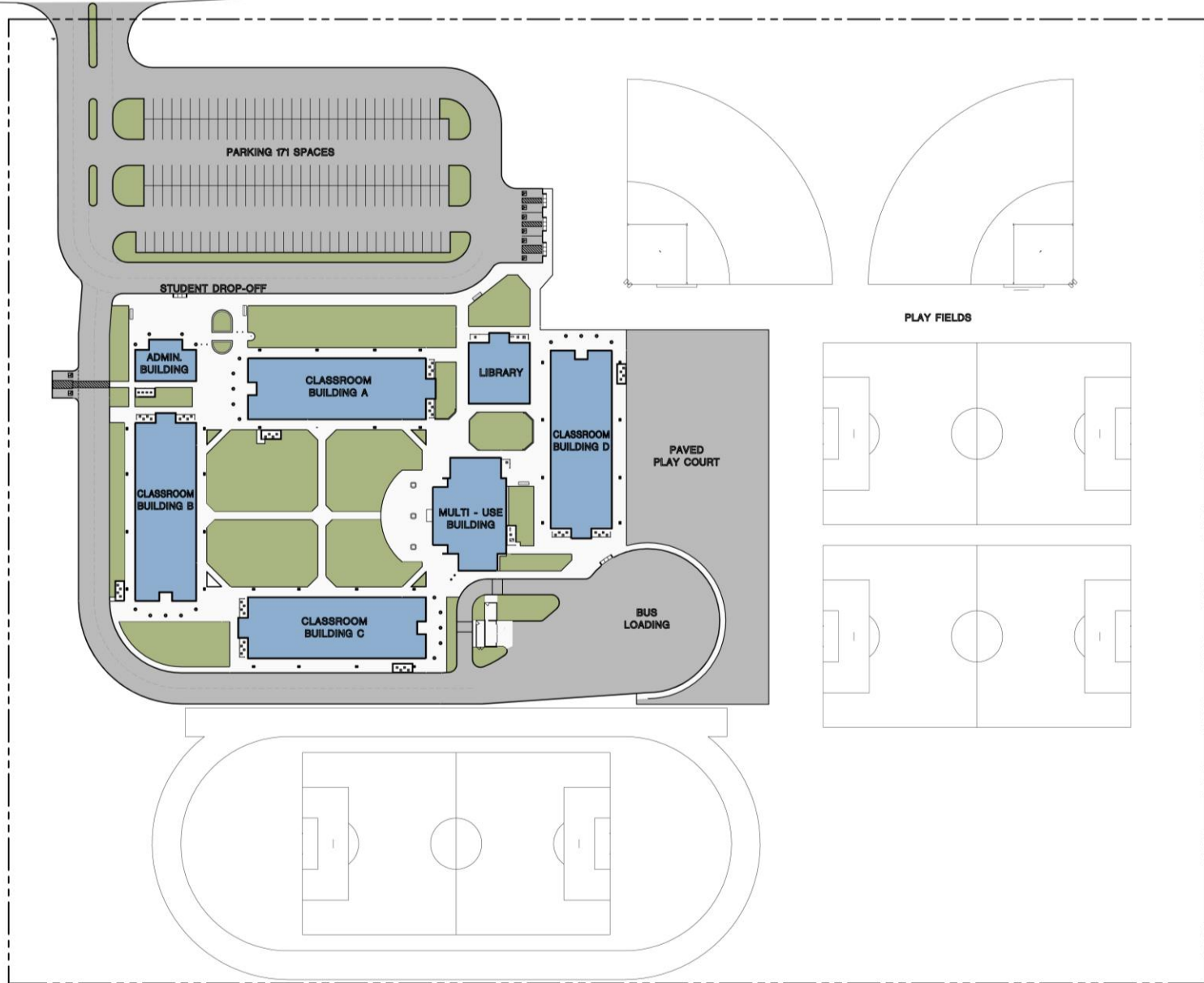




NEW ELEMENTARY SCHOOL



FIRST STREET



PLAY FIELDS

PAVED PLAY COURT

BUS LOADING

STUDENT DROP-OFF

PARKING 171 SPACES

ADMIN. BUILDING

CLASSROOM BUILDING A

LIBRARY

CLASSROOM BUILDING D

CLASSROOM BUILDING B

MULTI - USE BUILDING

CLASSROOM BUILDING C



NEW ELEMENTARY SCHOOL

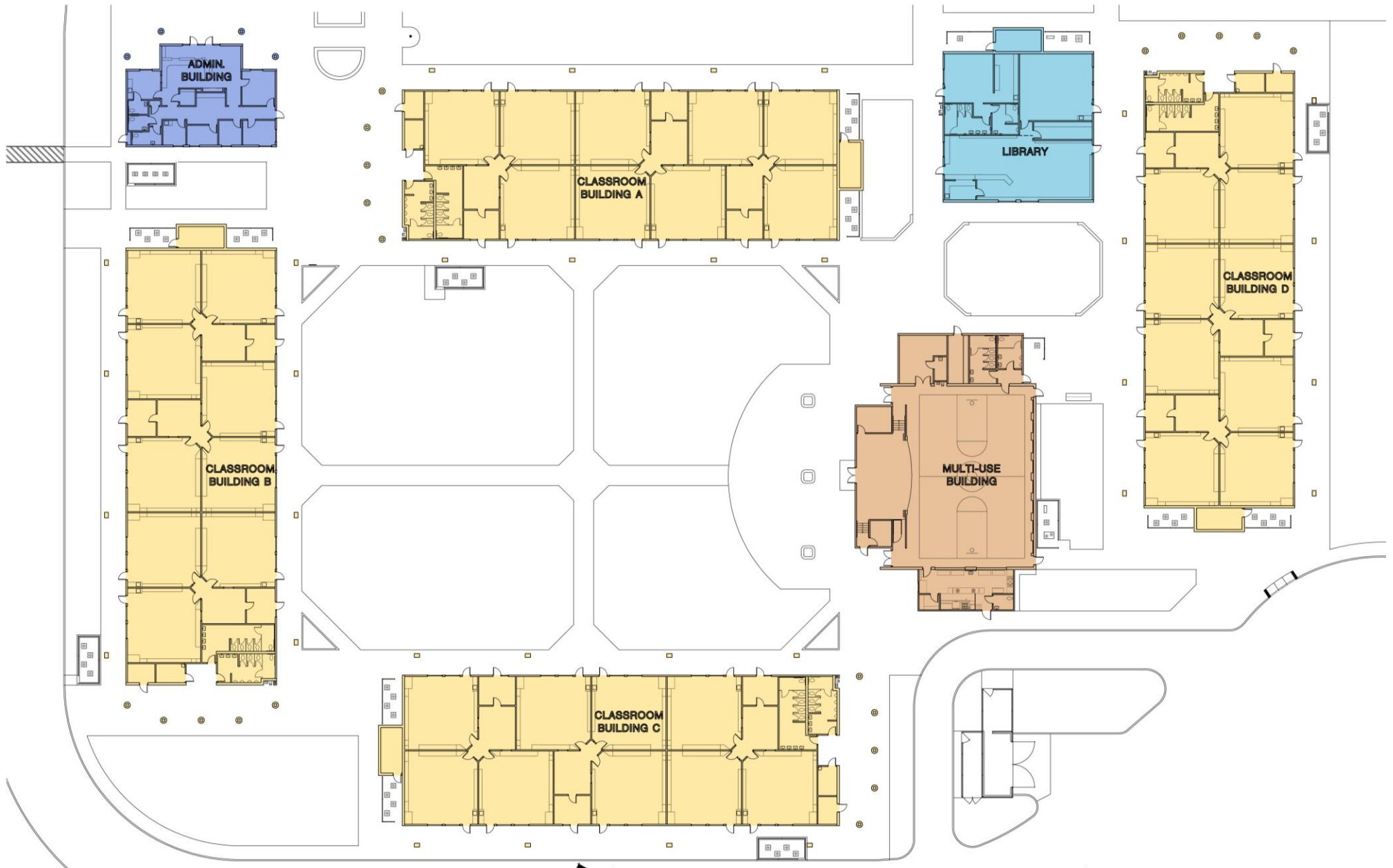


PROPOSED SITE PLAN

25 ACRES

SCALE 1" = 500'





NEW ELEMENTARY SCHOOL FLOOR PLANS

SCALE 1/8" = 1'-0"



NEW ELEMENTARY SCHOOL



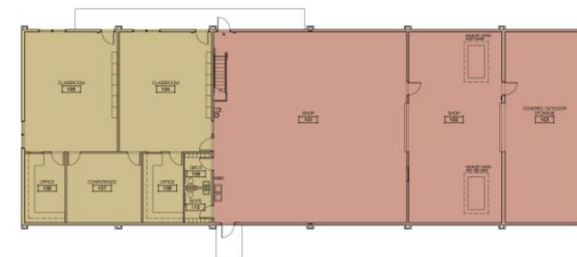
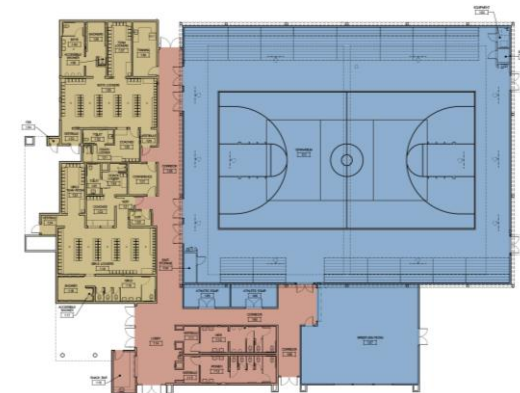


NEW ELEMENTARY SCHOOL EXAMPLE



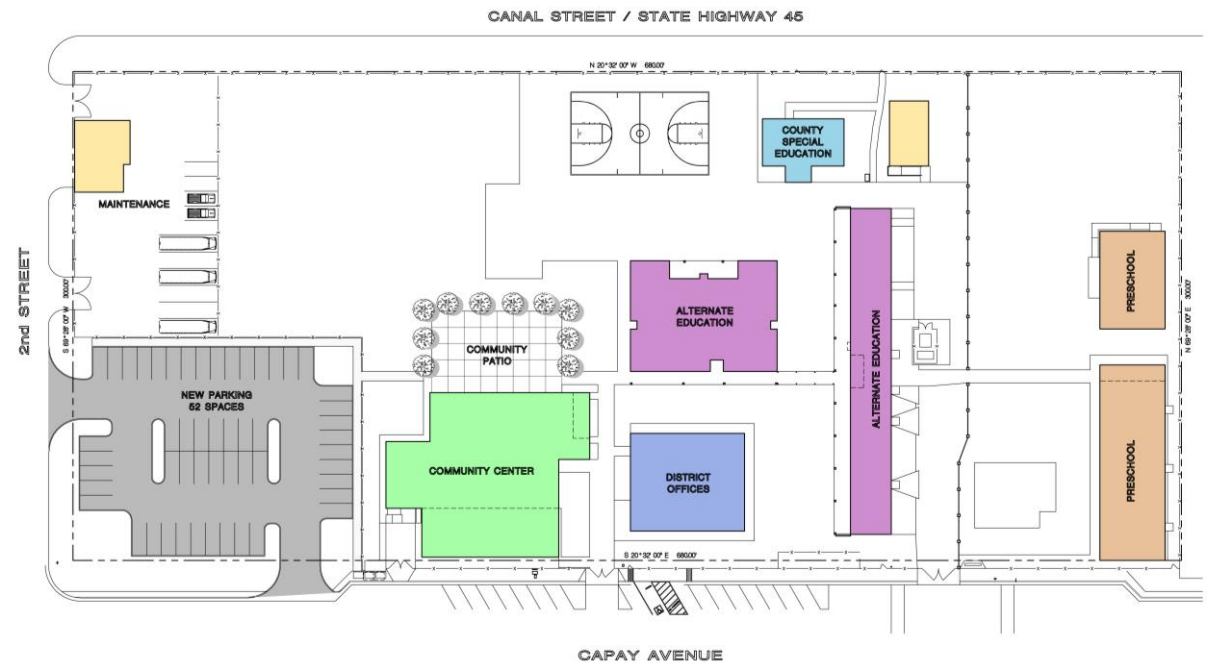
HAMILTON HIGH SCHOOL IMPROVEMENTS

- LAND ACQUISITION (15 ACRES)
- CLASSROOM & WOODSHOP REMODEL
- NEW GYMNASIUM & LOCKER ROOMS
- NEW PARKING LOT
- AG DEPARTMENT RELOCATION
- NEW AG SHOP & PARKING
- ATHLETIC FIELD RELOCATION
- NEW TRACK & SOCCER FIELD



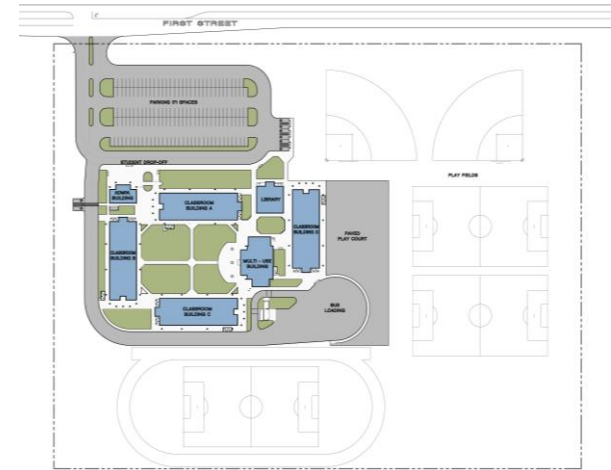
MULTI-FACILITY SITE IMPROVEMENTS

- REMODELED COMMUNITY CENTER
- NEW OUTDOOR COMMUNITY PATIO
- DISTRICT OFFICE REMODEL
- PRESCHOOL RELOCATION
- NEW PARKING LOT
- ALTERNATE EDUCATION REMODEL
- MAINTENANCE FACILITY IMPROVEMENTS
- STREET FACADE IMPROVEMENTS



NEW ELEMENTARY SCHOOL

- LAND AQUISITION (25 ACRES)
- BUILDING/SITE DEVELOPMENT
 - 36 CLASSROOMS
 - MULTI-PURPOSE ROOM, STAGE & KITCHEN
 - LIBRARY BUILDING
 - SPECIAL EDUCATION CLASSROOM
 - ADMINISTRATION BUILDING
 - PLAYFIELDS & TRACK



THANK YOU

