



Skyline High School

Early College

Issue No. 7 | February, 2024



Celebrating Black History Month!

African American Month, also known as Black History Month, is a time of celebration, reflection, and recognition of the countless contributions African Americans have made to society. Throughout February, communities across the United States come together to honor the resilience, achievements, and cultural richness of African Americans. It's a time to commemorate the pivotal role they have played in shaping the nation's history, from the struggles against oppression to groundbreaking advancements in art, literature, science, and civil rights. Through various events, exhibitions, and educational programs, people of all backgrounds are encouraged to learn, appreciate, and celebrate the diverse tapestry of African American heritage and legacy.



Principal's Playbook: Ms. Johnson



Love HerStory!

Celebrations for Fall 23 College Courses

We had 92% Success in course and 96% completion. Let's keep it up!

Classroom Expectations

- Rihanna sung it best, Work, Work, Work, Work, Work, Work!
- Bell to bell Instruction.
- TSIA Prep in all classes daily.
- Collaborative Grouping.
- Student Engagement.
- STAAR Prep and TSIA PREP everyday\

ITSIA Boot Camps and TSIA TUESDAYS

- Parents WE NEED your HELP!
- Fall schedules are due to College Classes this month and we need your scholar to be TSIA MET in order to continue in classes. Please support them byu bringing them to TSIA PREP Sessions

Important Upcoming Dates:

- President's Day 2.19 (College Classes in Session!)
- TELPAS Testing 2.20-2.22
- Parent University 2.22.24
- Counselors Appreciation is this month, show your counselor some LOVE!

*Dress Code Enforced Daily. Mon: Black Polo, TUE: Professional Dress, WED- FRI Collegiate Uniform. The uniform includes a Blue, White, Black or Red Early College Polo and on khakis, tan , blue or black.



Self care tips

- Take a Walk
- Stay Hydrated
- Meditate



ECHS the loop...

UPCOMING EVENTS

Cohort 2028 lottery selection during the first week of March.

MONTHLY HIGHLIGHTS

Students attempting TSIA for ELAR or MATH may schedule testing at a Dallas Colleges Testing Center . Login to econnect.dcccd.edu or go to <https://www.dallascollege.edu/admissions/tsi/pages/faq-tsi-assessment.aspx> for FAQ's about TSIA test taking at the Dallas College Campuses.



ANNOUNCEMENTS

TSIA testing at Skyline is ongoing this Spring semester.
Please sign up for a Saturday Boot Camp.
Look for postings in the ECCHS office and classrooms.

Ms. Sims COUNSELOR'S CORNER...

MENTAL HEALTH CHECKLIST:

Everyday:

- move my body
- take a break from screens
- say 3 things I am grateful for
- eat healthy
- sleep for 7-9 hours

Once a week:

- connect with a friend/family member
- plan an outdoor activity
- set a new goal (school, home, or activity)
- claim and celebrate a win

Once a month:

- try a creative activity or new hobby
- finish a book
- take a 1 day break from social media
- help someone

MONTHLY HIGHLIGHTS:

Early College Students setting goals..



Early college students, driven by ambition and a thirst for academic success, eagerly set their goals for the upcoming semester. With a blend of excitement and determination, they meticulously plan their objectives, envisioning academic milestones to conquer and personal growth to achieve. Whether aiming for stellar grades, active participation in extracurricular activities, or the development of essential life skills, these students embark on their journey with clear direction and purpose. Through careful reflection and strategic planning, they aspire to balance their academic pursuits with personal well-being, fostering a holistic approach to their education. Armed with enthusiasm and resilience, early college students eagerly embrace the challenges ahead, poised to turn their goals into tangible achievements.



Mr. MEJIA COORDINATOR'S CORNER...

HAPPENING THIS MONTH!

Financial Literacy!

Financial literacy is crucial from an early age as it empowers individuals with the knowledge and skills necessary to make informed decisions about money management. Starting early allows individuals to develop healthy financial habits, such as budgeting, saving, and investing, which can have a profound impact on their long-term financial well-being. Early financial education also helps individuals understand the importance of financial planning, setting realistic financial goals, and navigating complex financial products and services. By instilling financial literacy early on, individuals are better equipped to build wealth, avoid debt, and make sound financial choices throughout their lives.

Our students have the opportunity to participate in the Bank of America Financial Literacy Challenge.



[Financial Literacy Challenge Login](#)

Parent Portal



Parent University -

Academic GPA (Grade Point Average) is a numerical representation of a student's overall academic performance. It is commonly used in educational institutions to assess a student's level of achievement and to determine eligibility for various academic honors, scholarships, and admission to higher education programs. Here are some key points to help you understand academic GPA:

- Grading Scale: GPA is typically calculated on a scale of 0 to 4.0, although some institutions may use a different scale. The specific values assigned to letter grades may vary, but a common scale is as follows:
 - A: 4.0 (Excellent)
 - B: 3.0 (Good)
 - C: 2.0 (Average)
 - D: 1.0 (Below Average)
 - F: 0.0 (Fail)
- Some institutions may also use "+" and "-" modifiers (e.g., A+, B-) that slightly adjust the numerical values.
- Course Credits: Each course you take is typically assigned a specific credit value that represents the amount of instructional time or workload associated with the course. A standard course may be worth 3 credits, but it can vary depending on the institution and the level of the course.
- Grade Calculation: To calculate your GPA, each course grade is multiplied by the number of credits for that course. The resulting value, called the grade points, is then added together for all courses taken in a specific period (e.g., semester or academic year). Finally, the total grade points are divided by the total number of credits taken to obtain the GPA.



- **Weighted and Unweighted GPA:** In some educational systems, a weighted GPA is used to account for the difficulty level of certain courses. Weighted GPAs assign higher values to grades earned in advanced or honors courses, reflecting the additional challenge and rigor. Unweighted GPAs, on the other hand, treat all courses equally.
- **Cumulative GPA:** A cumulative GPA represents the overall average of all courses taken throughout a student's academic career or a specific period, such as a semester, year, or entire program. It provides a comprehensive evaluation of academic performance.
- **GPA Scale Interpretation:** GPA scales provide a standardized way to interpret academic performance. Generally, higher GPAs indicate better performance and academic excellence, while lower GPAs may indicate room for improvement or challenges in certain subjects.
- **Importance and Use:** Academic GPA is used by educational institutions to evaluate student performance, determine class rankings, make decisions about academic honors and awards, assess eligibility for scholarships or grants, and in some cases, for admission to higher education programs.
- **Transcripts:** GPA is often reported on academic transcripts, which provide a comprehensive record of a student's grades and courses taken during their academic journey. Transcripts are frequently requested by colleges, universities, employers, and other institutions as part of the application or evaluation process.

Remember that GPA is just one measure of academic achievement, and it is important to consider other factors like extracurricular activities, personal achievements, and personal growth when evaluating an individual's overall capabilities and potential.

We Love Learning

by Skyline ECHS Teachers

TUTORING HOURS

ENGLISH:

Mr. Stewart
Tue 8:30 - 9 and 5-5:45 pm

Mr. Strickland
Wed 6-7 pm
Thur 8-8:45 am
by appointment

Mr. Phillips
Tue/Wed 4:30-5:30 pm
Thursday by appt only

MATH:

Ms. Anthony
Mon/Wed 4:30-5:30 pm
Fri 8:00-8:45

Ms. Gaius- Obaseki
Tuesday 4:30-5:30 pm
Mon/Fri 8:00-8:45

Dr. Neal
Mon/Tue 4:30-5:30 pm
Fri 8:40 - 9:05 am

SCIENCE:

Ms. Donkor
Mon 8-8:45 am
Tue 4:30-5:30 pm 8-8:45 am

Dr Tirrey
Mon/Wed 8.00-8:30am
Other by appointment

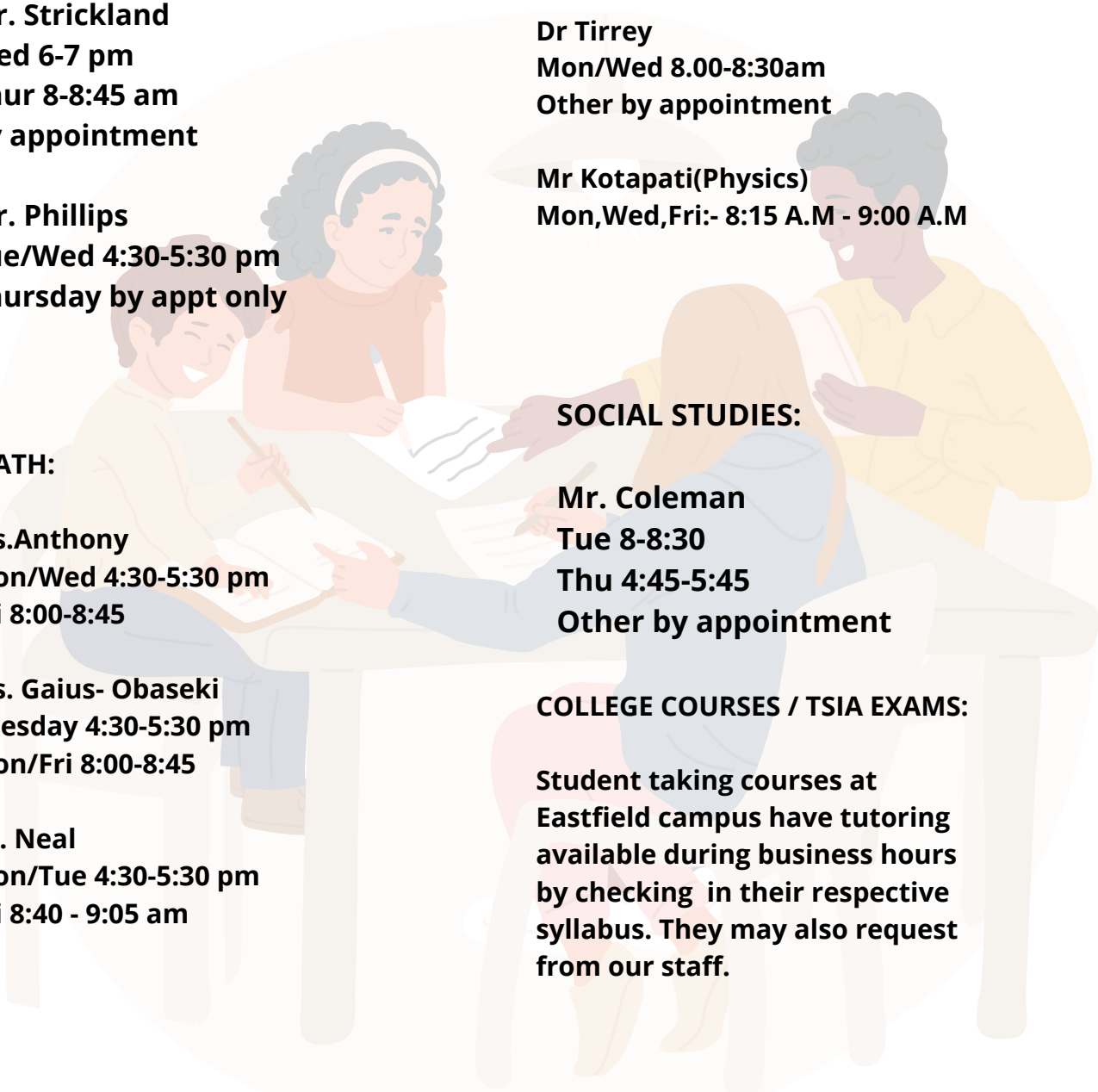
Mr Kotapati(Physics)
Mon,Wed,Fri:- 8:15 A.M - 9:00 A.M

SOCIAL STUDIES:

Mr. Coleman
Tue 8-8:30
Thu 4:45-5:45
Other by appointment

COLLEGE COURSES / TSIA EXAMS:

Student taking courses at Eastfield campus have tutoring available during business hours by checking in their respective syllabus. They may also request from our staff.



We Love Learning

by ECHS Teachers

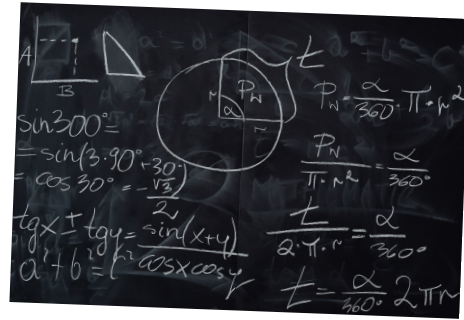
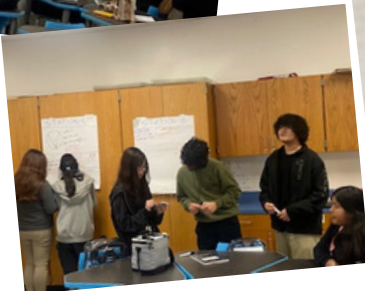
MATHEMATICS

Algebra I Honors- Dr. George Neal

In Algebra 1, learners delve into fundamental mathematical concepts that serve as building blocks for advanced mathematical understanding. The primary learning objectives include mastering algebraic expressions, equations, and inequalities, as well as understanding the properties and operations of real numbers. Students also develop proficiency in solving linear equations and systems of equations, graphing linear and quadratic functions, and interpreting graphical representations. Additionally, Algebra 1 emphasizes the application of algebraic concepts to real-world problems, fostering critical thinking and problem-solving skills essential for future mathematical and academic success. Through Algebra 1, students not only acquire foundational algebraic knowledge but also cultivate analytical reasoning and mathematical fluency necessary for higher-level mathematics and various fields beyond the classroom.

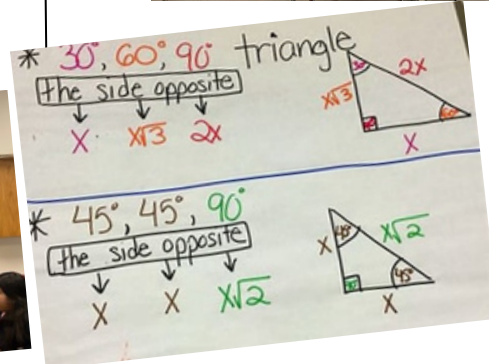
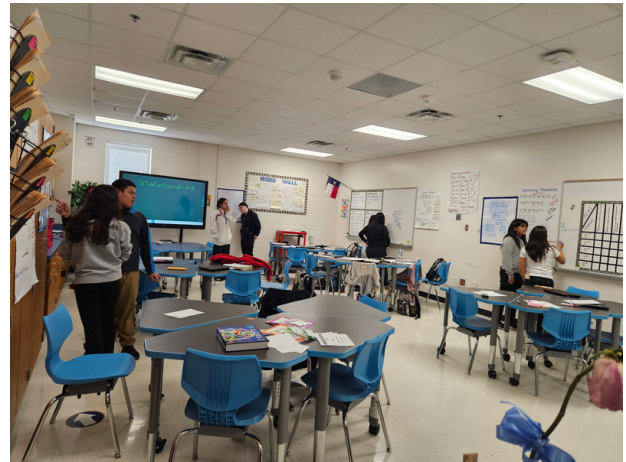
Geometry Honors - Ms. Obaseki

Scholars have been applying their knowledge on Special Right Triangles theorems. They are finding the missing side of each length of right triangle. Leaving their answers as radicals in simplest form.



Algebra II Honors - Ms. Anthony

Scholars have been factoring polynomials including special cases such as difference of squares, difference of cubes, and sum of cubes. They are about to explore the inverse world of functions starting next week.



We Love Learning

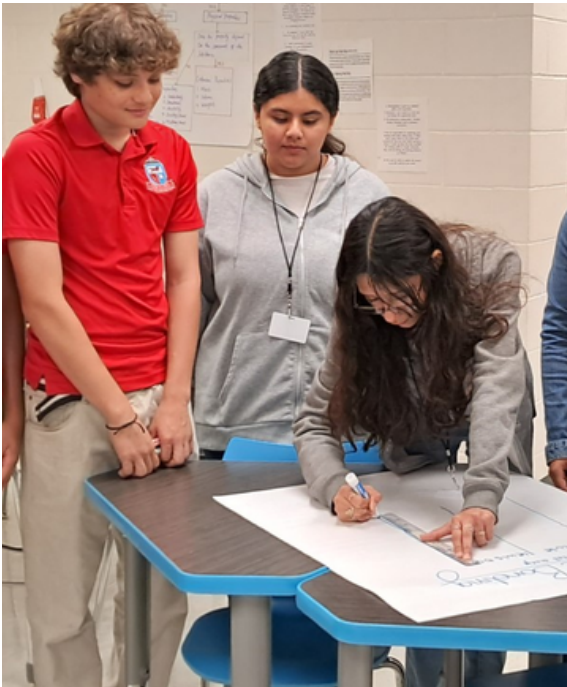
by ECHS Teachers

SCIENCE

Chemistry - Dr. Tirrey

Doing the Project for Solutions
Figuring the difference between
Homogenous and Heterogenous
solutions by many examples.

The students differentiated and
Recorded the difference between
Saturated,unsaturated and
Supersaturated solutions



Biology Honors - Ms. Donkor

Students are curenly learning about the impact
African American have had on the world of
biology. Students are engaging in evolutionary
change and how it has sculpt the world for
generations to come.

Physics - Mr. Kotapati Celebrating Black History Month:-

The students in Skyline
ECHS celebrate Black
History month. It honors
all Black people from all
periods of U.S. history,
from the enslaved people
first brought over from
Africa in the early 17th
century to African
Americans living in the
United States today.



We Love Learning

by ECHS Teachers

SOCIAL STUDIES / MAPS / COLLEGE TRANSITION

Mr. Coleman

AP Human Geography-

Is the branch of geography dealing with how human activity affects or is influenced by the earth's surface.

HIST 1301-

College level ready in Reading.

Course Description: A survey of the social, political, economic, cultural, and intellectual history of the United States from the pre-Columbian era to the Civil War/Reconstruction period. United States History I includes the study of pre-Columbian, colonial, revolutionary, early national, slavery and sectionalism, and the Civil War/Reconstruction eras. Themes that may be addressed in United States History I include: American settlement and diversity, American culture, religion, civil and human rights, technological change, economic change, immigration and migration, and creation of the federal government. (3 Lec.)

Coordinating Board Academic Approval Number 5401025125

HIST 1302-

A survey of the social, political, economic, cultural, and intellectual history of the United States from the Civil War/Reconstruction era to the present. United States History II examines industrialization, immigration, world wars, the Great Depression, Cold War and post-Cold War eras. Themes that may be addressed in United States History II include: American culture, religion, civil and human rights, technological change, economic change, immigration and migration, urbanization and suburbanization, the expansion of the federal government, and the study of U.S. foreign policy. (3 Lec.)

Coordinating Board Academic Approval Number 5401025125

EDUC-1300 - Dr. Owens Seaverson

This course is a study of the 1) research and theory in the psychology of learning, cognition, and motivation, 2) factors that impact learning, and 3) application of learning strategies. Theoretical models of strategic learning, cognition, and motivation serve as the conceptual basis for the introduction of college-level student academic strategies. Students use assessment instruments (e.g., learning inventories) to help them identify their own strengths and weaknesses as strategic learners. Note: Students are expected to integrate and apply the learning skills discussed across their own academic programs and become effective and efficient learners. Students developing these skills should be able to draw continually from the theoretical models they have learned. This course is recommended for all students, especially nontraditional students and students on academic probation and is required for students returning to college after academic suspension or by placement by the Admissions Committee.

