

# Prescott Unified School District

Yavapai County

Efficiency peer groups 3 and T-4, Achievement peer group 2<sup>1</sup>

Legislative district(s): 1

District size, location:

Medium-large, City

Students attending:

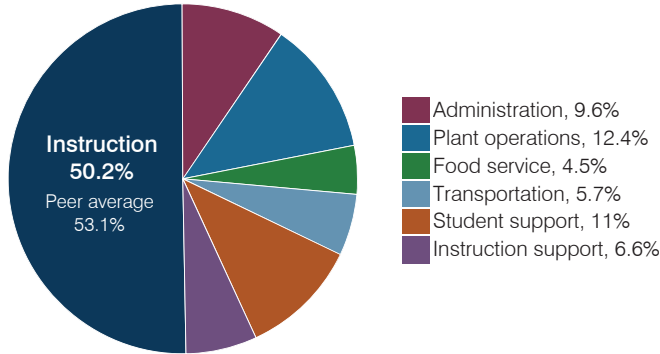
3,843

Number of schools:

6

## OPERATIONAL EFFICIENCY

### Spending by operational area



### Efficiency measures relative to peer averages

Operational area	Measure	District	Peer average	State average
Administration	Cost per pupil	\$717	\$837	\$844
	Students per administrative position	65	69	67
Plant operations	Cost per square foot	\$5.28	\$6.01	\$6.30
	Square footage per student	176	157	155
Food service	Cost per meal	\$2.79	\$3.04	\$2.88
Transportation	Cost per mile	\$3.38	\$3.61	\$3.84
	Cost per rider	\$1,700	\$1,278	\$1,198

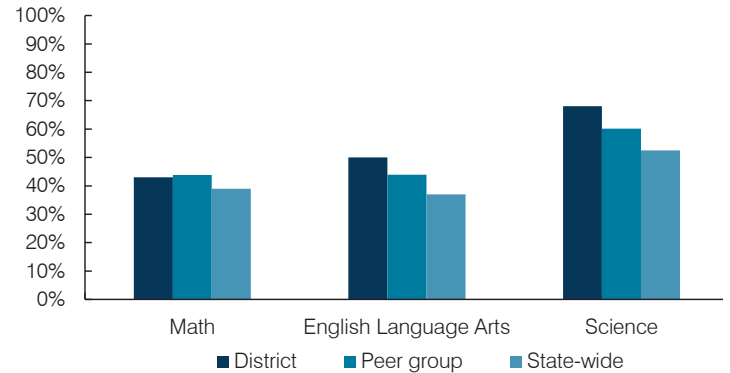
Very low   Low   Comparable   High   Very high

### Per pupil spending

Spending by area	District		Peer average 2017	State average 2017
	2016	2017		
Instruction	\$ 3,824	\$ 3,750	\$ 3,991	\$ 4,377
Administration	898	717	837	844
Plant operations	898	929	965	977
Food service	355	339	324	422
Transportation	380	423	433	381
Student support	777	823	640	679
Instruction support	324	496	338	461
<b>Total operational</b>	<b>\$ 7,456</b>	<b>\$ 7,477</b>	<b>\$ 7,528</b>	<b>\$ 8,141</b>
Land and buildings	\$ 33	\$ 1,533	\$ 890	\$ 691
Equipment	107	490	406	424
Interest	26	61	258	236
Other	71	85	146	161
<b>Total nonoperational</b>	<b>\$ 237</b>	<b>\$ 2,169</b>	<b>\$ 1,700</b>	<b>\$ 1,512</b>
<b>Total per pupil spending</b>	<b>\$ 7,693</b>	<b>\$ 9,646</b>	<b>\$ 9,228</b>	<b>\$ 9,653</b>

## STUDENT ACHIEVEMENT, STUDENT AND TEACHER MEASURES, AND REVENUES

### Students who passed state assessments



### Student and teacher measures

Measure	District	Peer average	State average
Attendance rate	95%	95%	94%
Graduation rate (2016)	NR	90%	80%
Poverty rate (2016)	14%	13%	22%
Special education population	10%	12%	12%
Students per teacher	19.6	18.4	18.5
Average teacher salary	\$42,546	\$46,837	\$48,372
Amount from Prop 301	\$5,211	\$6,016	\$5,840
Average years of teacher experience	10.1	11.3	11.3
Percentage of teachers in first 3 years	18%	18%	19%

### Per pupil revenues

Revenues by source	District		Peer average 2017	State average 2017
	2016	2017		
Federal	\$ 953	\$ 946	\$ 781	\$ 1,318
State	1,905	2,417	3,243	3,831
Local	5,505	5,614	5,097	4,443
<b>Total per pupil revenues</b>	<b>\$ 8,363</b>	<b>\$ 8,977</b>	<b>\$ 9,121</b>	<b>\$ 9,592</b>

### Select revenues from common sources

	District 2016	District 2017	Peer average	State average
Equalization formula funding	\$ 5,571	\$ 5,207	\$ 5,442	\$ 5,503
Amount from Prop 123	252	237	240	245
Prop 123 additional funding	49	46	47	46
Grants	1,078	1,374	866	1,185
Donations and tax credits	234	210	157	89

### Select revenues from less common sources

	District 2016	District 2017	Number of peers receiving
Desegregation	\$ 0	\$ 0	1 of 15
Small school adjustment	0	0	0 of 15
Federal impact aid	0	0	3 of 15
Voter-approved levy increases	521	525	13 of 15

<sup>1</sup> See Appendix A for information such as districts included in each peer group and Appendix B for sources and methodology.

**Instructional spending percentage**

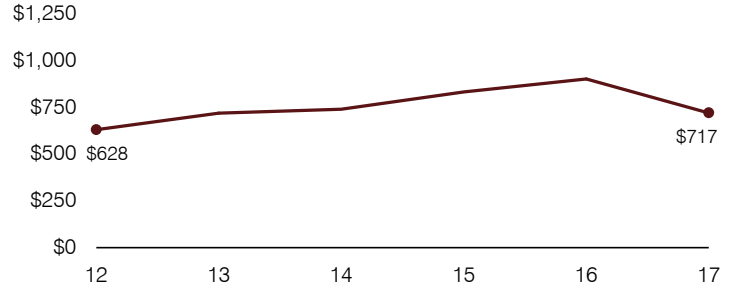
Year:	2001	2002	2003	2004	2005	2006	2007	2008	2009	2010	2011	2012	2013	2014	2015	2016	2017
Percentage:	61.3	61.2	62.6	61.5	60.5	61.5	62.3	62.2	61.6	57.5	58.3	55.7	54.8	53.6	53.1	51.3	50.2

**OPERATIONAL TRENDS AND FINANCIAL STRESS ASSESSMENT**  
Fiscal years as indicated

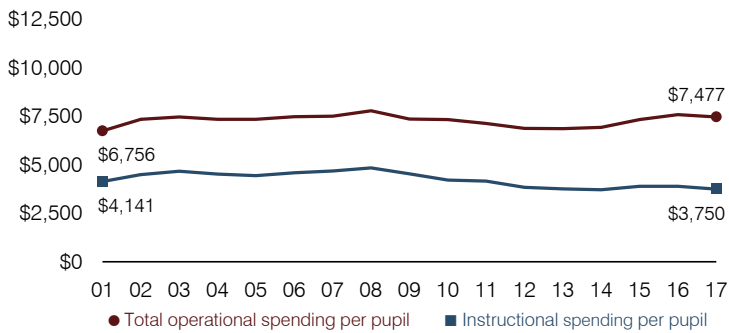
**5-year spending trend (2012 through 2017)**

Total operational spending per pupil, adjusted for inflation, increased by 9 percent. The percentage of dollars spent on instruction decreased from 55.7 to 50.2 percent. As a percentage of total operational spending, student support and instruction support increased substantially and transportation increased slightly, while plant operations and food service decreased slightly. Administration varied year to year.

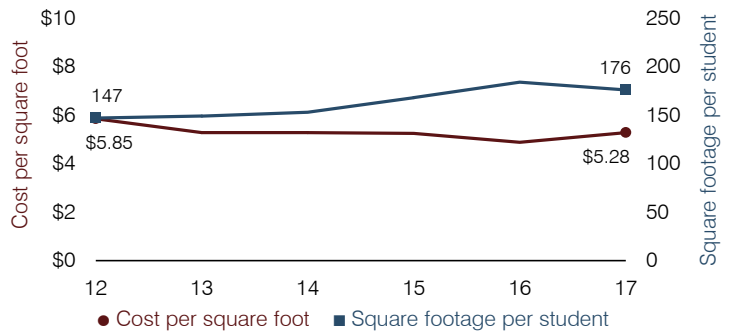
**Administrative cost per pupil**



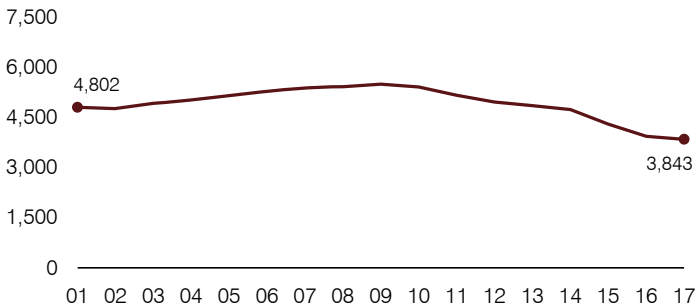
**Total operational and instructional spending per pupil (inflation adjusted to 2017 dollars)**



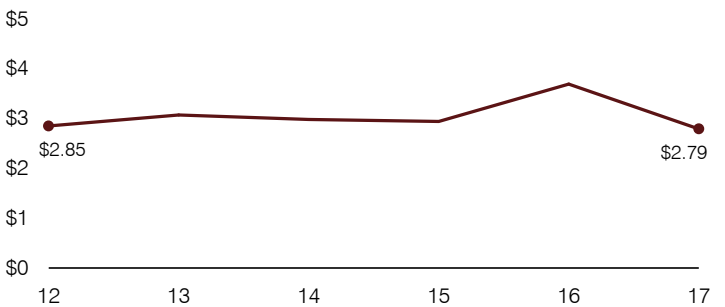
**Plant cost per square foot and square footage per student**



**Students attending**



**Food service cost per meal**



**Financial stress assessment**

Overall financial stress level: **Moderate**

Measure: 2015 through 2017

	Assessment
Change in number of district students	Large decrease
Spending exceeded operating/capital budgets	Isolated
Spending increase election results	Voter-approved
Operating reserve percentage, Trend	3.3%, Increasing
Years of capital reserve held	1 to 3 years
Current financial and internal control status	Compliant

Low	Moderate	High
-----	----------	------

**Transportation costs per mile and per rider**

