



Comprehensive Needs Assessment 2024 - 2025 School Report



Bulloch County
Southeast Bulloch High School

1. PLANNING AND PREPARATION

1.1 Identification of Team

The comprehensive needs assessment team consists of people who are responsible for working collaboratively throughout the needs assessment process. Ideal team members possess knowledge of programs, the capacity to plan and implement the needs assessment, and the ability to ensure stakeholder involvement. A required team member's name may be duplicated when multiple roles are performed by the same person. Documentation of team member involvement must be maintained by the LEA. Watch the [Planning and Preparation webinar](#) for additional information and guidance.

Leadership Team

	Position/Role	Name
Team Member # 1	Principal	Dr. Julie Mizell
Team Member # 2	Assistant Principal	Tracy Robinson
Team Member # 3	Assistant Principal/Athletic Director	Mark Oliver
Team Member # 4	Assistant Principal/School Improvement Specialist	Josh Cole/Denise Bearden
Team Member # 5	Assistant Principal	Karla Wiley
Team Member # 6	Special Education Coordinator	Stephanie Mireles
Team Member # 7	Department Head	Aimee Civalier

Additional Leadership Team

	Position/Role	Name
Team Member # 1	Department Head	Maria Oliver
Team Member # 2	Department Head	Kaylee Coleman
Team Member # 3	Department Head	Renee Rogers
Team Member # 4	Department Head	Jolie Britt
Team Member # 5	Department Head	Brent Whitaker
Team Member # 6	Department Head	Antonio Mireles
Team Member # 7	Department Head	Ashleigh Wright
Team Member # 8	Counselor	Katherine Wellman
Team Member # 9	Counselor	Krista Edwards
Team Member # 10	Counselor/Counselor	Erin Martin/Colleen Woods

1. PLANNING AND PREPARATION

1.2 Identification of Stakeholders

Stakeholders are those individuals with valuable experiences and perspective who will provide the team with important input, feedback, and guidance. Required stakeholders must be engaged in the process to meet the requirements of participating federal programs. Documentation of stakeholder involvement must be maintained by the LEA. Watch the [Planning and Preparation webinar](#) for additional information and guidance.

Stakeholders

	Position/Role	Name
Stakeholder # 1	School Improvement Specialist/School Council Member	Denise Bearden
Stakeholder # 2	Counselor/School Council Member	Krista Edwards
Stakeholder # 3	Former Educator/School Council Member	Fred Shaver
Stakeholder # 4	Board Member/School Council Member	Heather Mims
Stakeholder # 5	Faith Based Leader/School Council Member	Chip Strickland
Stakeholder # 6	Community Member/School Council Member	Edward Rich
Stakeholder # 7	Former Educator/School Council Member	Mike Sparks
Stakeholder # 8	Parent/School Council Member	Emily Godbee

How will the team ensure that stakeholders, and in particular parents and/or guardians, were able to provide meaningful input into the needs assessment process?	School Council Meetings Leadership Team Meetings 9th Grade Open House 10-12 Open House
--	---

2. DATA COLLECTION ANALYSIS

2.1 Coherent Instructional System

Analyze the LEA's data (including sections 2.6) and answer the guiding questions to determine existing trends and patterns that support the identification of instructional needs. Complete a data-informed self-rating for each Georgia School Performance Standard (GSPS). See the [Coherent Instructional System webinar](#) for additional information and guidance.

Coherent Instruction Data

Curriculum Standard 1 -Uses systematic, collaborative planning processes so that teachers share an understanding of expectations for standards, curriculum, assessment, and instruction		
1. Exemplary	<p>A systematic, collaborative process is used proactively for curriculum planning.</p> <p>Nearly all teachers or groups of teachers, support staff, and leaders within the school have common expectations for standards, curriculum, assessment, and instruction.</p>	
2. Operational	<p>A systematic, collaborative process is used regularly for curriculum planning.</p> <p>Most teachers or groups of teachers within the school have common expectations for standards, curriculum, assessment, and instruction.</p>	✓
3. Emerging	<p>A collaborative process is used occasionally for curriculum planning.</p> <p>Some teachers or groups of teachers within the school have common expectations for standards, curriculum, assessment, and instruction.</p>	
4. Not Evident	<p>A collaborative process is rarely, if ever, used for curriculum planning.</p> <p>Few, if any, teachers or groups of teachers within the school have common expectations for standards, curriculum, assessment, and instruction.</p>	

Coherent Instruction Data

Curriculum Standard 2 -Designs curriculum documents and aligns resources with the intended rigor of the required standards		
1. Exemplary	<p>Curriculum documents (e.g., lesson plans, unit plans, performance tasks, curriculum maps, scope, and sequence documents, guides) that are aligned with the intended rigor of the required standards are the products of a systematic, collaborative process.</p> <p>These curriculum documents and resources are used and continuously revised by teachers and support staff to ensure an alignment with the intended, taught, and tested standards.</p>	
2. Operational	<p>Curriculum documents (e.g., lesson plans, unit plans, performance tasks, curriculum maps, scope and sequence documents, guides) have been designed, and resources are aligned with the intended rigor of the required standards.</p> <p>These curriculum documents and resources guide the work of teachers and instructional support staff.</p>	
3. Emerging	Curriculum documents and resources exist, but they are not complete in all content areas or grade levels or lack the intended rigor of the required standards.	✓
4. Not Evident	Few, if any, curriculum documents and resources exist to support the implementation of the intended rigor of the required standards.	

Instruction Standard 1 -Provides a supportive and well -managed environment conducive to learning		
1. Exemplary	<p>A supportive and well-managed environment conducive to learning is evident throughout the school.</p> <p>Students consistently stay on-task and take responsibility for their own actions.</p>	
2. Operational	A supportive and well-managed environment conducive to learning is evident in most classrooms.	✓
3. Emerging	A supportive and well-managed environment conducive to learning is evident in some classrooms.	
4. Not Evident	A supportive and well-managed environment conducive to learning is evident in few, if any, classrooms.	

Coherent Instruction Data

Instruction Standard 2 -Creates an academically challenging learning environment		
1. Exemplary	Nearly all teachers create an academically challenging, learning environment (e.g., higher-order thinking skills and processes, active student engagement, relevance, collaboration). Students consistently work independently and in teams to solve real-world problems that require advanced effort, decision-making, and critical and creative thinking.	
2. Operational	Most teachers create an academically challenging, learning environment (e.g., higher-order thinking skills and processes, active student engagement, relevance, collaboration).	✓
3. Emerging	Some teachers create an academically challenging learning environment.	
4. Not Evident	Few, if any, teachers create an academically challenging learning environment.	

Instruction Standard 3 -Establishes and communicates clear learning targets and success criteria aligned to curriculum standards		
1. Exemplary	Nearly all teachers establish and communicate clear learning targets and success criteria aligned to the required curriculum standards. Learning targets are evident throughout the lesson and in student work. Articulation of the learning targets is consistent and pervasive among like content areas and grade levels.	
2. Operational	Most teachers establish and communicate clear learning targets and success criteria aligned to the required curriculum standards. Learning targets are evident throughout the lesson and in student work.	
3. Emerging	Some teachers establish and communicate clear learning targets and success criteria aligned to the required curriculum standards.	✓
4. Not Evident	Few, if any teachers establish clear learning targets and success criteria aligned to the required curriculum standards.	

Coherent Instruction Data

Instruction Standard 4 -Uses research based instructional practices that positively impact student learning		
1. Exemplary	Nearly all teachers pervasively demonstrate a repertoire of highly effective, research-based instructional practices that positively impact student learning (e.g., providing feedback, cooperative learning, advance organizers, questioning techniques, similarities and differences, reinforcing effort, goal setting, summarizers, graphic representations, reciprocal teaching).	
2. Operational	Most teachers demonstrate a repertoire of effective, research-based instructional practices that positively impact student learning (e.g., providing feedback, cooperative learning, advance organizers, questioning techniques, similarities and differences, reinforcing effort, goal setting, summarizers, graphic representations, reciprocal teaching).	
3. Emerging	Some teachers demonstrate a repertoire of effective, research-based instructional practices that positively impact student learning.	✓
4. Not Evident	Few, if any, teachers demonstrate a repertoire of effective, research-based instructional practices that positively impact student learning.	

Instruction Standard 5 -Differentiates instruction to meet specific learning needs of students		
1. Exemplary	<p>Nearly all teachers differentiate instruction (e.g., using flexible grouping, making adjustments, providing choices based upon readiness levels, interests, or needs) to meet the specific learning needs of students.</p> <p>Nearly all teachers plan and implement multiple means of representation, engagement, action, and expression to meet the learning needs of students (UDL).</p> <p>Remediation, enrichment, and acceleration are pervasive practices.</p>	
2. Operational	<p>Most teachers differentiate instruction (e.g., using flexible grouping, making adjustments, providing choices based upon readiness levels, interests, or needs) to meet the specific learning needs of students.</p> <p>Most teachers plan and implement multiple means of representation, engagement, action, and expression to meet the learning needs of students (UDL).</p>	
3. Emerging	Some teachers differentiate instruction to meet the specific learning needs of students.	✓
4. Not Evident	Few, if any, teachers differentiate instruction to meet the specific learning needs of students.	

Coherent Instruction Data

Instruction Standard 6 -Uses appropriate, current technology to enhance learning		
1. Exemplary	The use by staff members and students of appropriate, current technology to enhance learning is an institutional practice (e.g., facilitate communication, collaboration, research, design, creativity, problem-solving).	
2. Operational	Most staff members and students use appropriate, current technology to enhance learning (e.g., facilitate communication, collaboration, research, design, creativity, problem-solving).	✓
3. Emerging	Some staff members, students, or both use appropriate, current technology to enhance learning.	
4. Not Evident	Few, if any, teachers demonstrate a repertoire of effective, research-based instructional practices that positively impact student learning.	

Instruction Standard 7 -Provides feedback to students on their performance on the standards or learning targets		
1. Exemplary	Nearly all teachers use the language of the standards or learning targets to provide students with specific, timely, descriptive feedback on their performance. Nearly all teachers systematically elicit diagnostic information from individual students regarding their understanding of the standards or learning targets.	
2. Operational	Most teachers use the language of the standards or learning targets to provide students with specific, timely, descriptive feedback on their performance.	
3. Emerging	Some teachers use the language of the standards or learning targets to provide students with specific, descriptive feedback on their performance.	✓
4. Not Evident	Few, if any, teachers use the language of the standards or learning targets to provide students with feedback on their performance, or the feedback that is provided is not specific, timely, or understandable.	

Instruction Standard 8 -Establishes a learning environment that empowers students to actively monitor their own progress		
1. Exemplary	Nearly all students use tools (e.g., rubrics, checklists, exemplars) to actively monitor their own progress. Nearly all students develop a sense of personal responsibility and accountability by engaging in record keeping, self-monitoring, sharing, exhibiting, and self-reflection.	
2. Operational	Most students use tools (e.g., rubrics, checklists, exemplars) to actively monitor their own progress.	
3. Emerging	Some students use tools to actively monitor their own progress.	✓
4. Not Evident	Few, if any, students use tools to actively monitor their own progress.	

Coherent Instruction Data

Instruction Standard 9 -Provides timely, systematic, data -driven interventions		
1. Exemplary	Nearly all students are provided timely, systematic, data-driven interventions to support their learning needs. Interventions are designed to meet the needs of each student. The effectiveness of those interventions is consistently monitored and adjustments are made.	
2. Operational	Most students are provided timely, systematic, data-driven interventions to support their learning needs.	
3. Emerging	Some students are provided extra assistance or needed support in a timely manner.	✓
4. Not Evident	Few, if any, students are provided extra assistance or effective support in a timely manner.	

Assessment Standard 1 -Aligns assessments with the required curriculum standards		
1. Exemplary	Nearly all assessments are aligned with the required curriculum standards. Assessments are reviewed during the school year to ensure alignment.	
2. Operational	Most assessments are aligned with the required curriculum standards.	✓
3. Emerging	Some assessments are aligned with the required curriculum standards.	
4. Not Evident	Few, if any, assessments are aligned with the required curriculum standards.	

Assessment Standard 3 -Uses common assessments aligned with the required standards to monitor student progress, inform instruction, and improve teacher practices		
1. Exemplary	Teachers consistently use common assessments aligned with the required standards in nearly all content areas, grade levels, or both for diagnostic, summative, and formative purposes. The data from the common assessments are analyzed down to the item level, and the results are used to inform instruction and improve teacher practices.	
2. Operational	Teachers use common assessments aligned with the required standards in most content areas to monitor student progress, inform instruction, and improve teacher practices.	✓
3. Emerging	Teachers use some common assessments aligned with the required standards in a few content areas with a limited amount of data analysis to monitor student progress, inform instruction, or improve teacher practices.	
4. Not Evident	Teachers use few, if any, common assessments to monitor student progress, inform instruction, or improve teacher practices.	

Coherent Instruction Data

Assessment Standard 4 -Implements a process to collaboratively analyze assessment results to adjust instruction		
1. Exemplary	Teachers extensively use a systematic, collaborative process to analyze assessment results. Instruction is consistently adjusted based on the analysis of assessment results across all content areas, grade levels, or both.	
2. Operational	Teachers regularly use a collaborative process to analyze assessment results. Instruction is routinely adjusted based on the analysis of assessment results.	
3. Emerging	Teachers occasionally use a collaborative process to analyze assessment results. Instruction is sometimes adjusted based on the analysis of assessment results.	✓
4. Not Evident	A collaborative process to analyze assessment results does not exist. Instruction is rarely, if ever, adjusted based on the analysis of assessment results.	

Assessment Standard 5 -Implements grading practices that provide an accurate indication of student progress on the required standards		
1. Exemplary	The grading practices used by teachers across nearly all content areas, grade levels, or both, consistently provide an accurate indication of student progress on the required standards.	
2. Operational	The grading practices used by teachers in most content areas, grade levels, or both provide an accurate indication of student progress on the required standards.	
3. Emerging	The grading practices used by teachers in some content areas, grade levels, or both provide an accurate indication of student progress on the required standards.	✓
4. Not Evident	The grading practices used by teachers rarely, if ever, provide an accurate indication of student progress on the required standards.	

2. DATA COLLECTION ANALYSIS

2.2 Effective Leadership

Analyze the LEA's data (including sections 2.6) and answer the guiding questions to determine existing trends and patterns that support the identification of leadership needs. Complete a data-informed self-rating for each Georgia School Performance Standard (GSPS). See the [Effective Leadership webinar](#) for additional information and guidance.

Effective Leadership Data

Leadership Standard 1 -Builds and sustains relationships to foster the success of students and staff		
1. Exemplary	Administrators consistently build and sustain relationships to foster the success of students and staff. The school staff is fully engaged in relationship building through collaboration, internal and external communication, and building trust with staff, students, families, and community stakeholders.	
2. Operational	Administrators regularly build and sustain relationships to foster the success of students and staff.	✓
3. Emerging	Administrators sometimes build relationships to foster the success of students and staff.	
4. Not Evident	Administrators seldom, if ever, build relationships to foster the success of students and staff.	

Leadership Standard 2 -Initiates and manages change to improve staff performance and student learning		
1. Exemplary	Administrators, the school leadership team, and other teacher leaders initiate and sustain change to improve staff performance and student learning. Administrators, the school leadership team, and other teacher leaders create a sense of urgency for change and effectively communicate a common vision.	
2. Operational	Administrators and the school leadership team initiate and sustain change to improve staff performance and student learning. The principal provides an appropriate balance of pressure and support to manage the change process for desired results.	
3. Emerging	Administrators initiate change to improve staff performance and student learning but do not sustain the change, remove barriers, or both.	✓
4. Not Evident	Administrators initiate few, if any, changes that impact staff performance and student learning.	

Effective Leadership Data

Leadership Standard 3 -Uses systems to ensure effective implementation of curriculum, assessment, instruction, and professional learning practices		
1. Exemplary	<p>The principal and other school leaders continually use systems to ensure effective implementation of curriculum, assessment, instruction, and professional learning practices.</p> <p>The principal and other school leaders have a comprehensive knowledge and understanding of the best practices for curriculum, assessment, instruction, and professional learning.</p>	
2. Operational	The principal and other school leaders often use systems to ensure effective implementation of curriculum, assessment, instruction, and professional learning practices.	
3. Emerging	The principal and other school leaders occasionally use systems to ensure effective implementation of curriculum, assessment, instruction, and professional learning practices.	✓
4. Not Evident	The principal and other school leaders rarely, if ever, use systems to ensure effective implementation of curriculum, assessment, instruction, and professional learning practices.	

Leadership Standard 4 -Uses processes to systematically analyze data to improve student achievement		
1. Exemplary	Extensive, comprehensive processes, including root cause analysis, are used consistently to analyze data (e.g., multiple sources of data: classroom, grade level, departmental, and subgroup, perception data) to improve student achievement.	
2. Operational	Numerous processes are used frequently to analyze data (e.g., multiple sources of data: classroom, grade level, departmental, and subgroup, perception data) to improve student achievement.	✓
3. Emerging	Some processes are in place and used occasionally to analyze data to improve student achievement.	
4. Not Evident	Few, if any, processes are in place to analyze data to improve student achievement.	

Leadership Standard 5 -Builds leadership capacity through shared decision-making and problem-solving		
1. Exemplary	<p>Extensive structures exist for staff to engage in shared decision-making and problem-solving and to build their leadership capacities.</p> <p>Administrators collaborate consistently with staff members to gather input.</p>	
2. Operational	Numerous structures exist for staff to engage in shared decision-making and problem-solving and to build their leadership capacities.	
3. Emerging	Some structures exist for staff to engage in shared decision-making, problem-solving, or both.	✓
4. Not Evident	Few, if any, structures exist for staff to engage in shared decision-making or problem-solving.	

Effective Leadership Data

Leadership Standard 6 -Establishes and supports a data-driven school leadership team that is focused on student learning		
1. Exemplary	<p>A highly effective, proactive, and data-driven school leadership team is focused on student learning.</p> <p>The leadership team addresses nearly all areas of student and staff learning and school leadership, including the development, implementation, and regular monitoring of the school improvement plan.</p>	
2. Operational	<p>A data-driven school leadership team is established with stakeholder representation (e.g., core and non-core teachers, certified support staff) and is focused on student learning.</p> <p>The school leadership team meets regularly and uses norms and protocols to work effectively and efficiently.</p>	
3. Emerging	The school leadership team is established and has some stakeholder representation but is focused chiefly on school operations rather than student learning.	✓
4. Not Evident	A school leadership team does not exist or does not have adequate stakeholder representation.	

Effective Leadership Data

Leadership Standard 7 -Monitors and evaluates the performance of teachers and other staff using multiple data sources		
1. Exemplary	<p>Monitoring the performance of teachers and other staff through observations, surveys, data, and documentation is consistent and comprehensive, resulting in highly accurate performance evaluations.</p> <p>A comprehensive system is in place to provide teachers and staff with ongoing, accurate, timely, detailed, descriptive feedback related to their performance.</p> <p>Administrators use the evaluation process to identify role models, teacher leaders, or both.</p>	
2. Operational	<p>Monitoring the performance of teachers and other staff regularly occurs using data or documentation, generally resulting in accurate performance evaluations.</p> <p>Teachers and staff receive accurate, timely, descriptive feedback related to their performance.</p>	
3. Emerging	<p>Monitoring the performance of teachers and other staff is inconsistent, incomplete, or lacks data or documentation, sometimes resulting in inaccurate performance evaluations.</p> <p>Teachers and staff receive some descriptive feedback related to their performance.</p>	✓
4. Not Evident	<p>Monitoring the performance of teachers and other staff rarely occurs or often results in inaccurate performance evaluations.</p> <p>Teachers and staff receive little or no descriptive feedback related to their performance.</p>	

Leadership Standard 8 -Provides ongoing support to teachers and other staff		
1. Exemplary	A comprehensive support system that is timely and targeted to individual needs is provided to teachers and other staff.	
2. Operational	Most support provided to teachers and other staff is targeted to individual needs.	✓
3. Emerging	Some support provided to teachers and staff is targeted to individual needs.	
4. Not Evident	Support to teachers and staff does not exist or is not targeted to individual needs.	

Effective Leadership Data

Planning and Organization Standard 1 -Shares a common vision and mission that define the school culture and guide the continuous improvement process		
1. Exemplary	<p>A common vision and mission have been collaboratively developed and communicated to nearly all stakeholders.</p> <p>The culture of the school has been deeply defined over time by the vision and mission, which are updated as needed.</p> <p>The daily work and practices of staff consistently demonstrate a sustained commitment to continuous improvement.</p>	
2. Operational	<p>A common vision and mission have been developed through a collaborative process and communicated to most stakeholders.</p> <p>The vision and mission define the culture of the school and guide the continuous improvement process.</p>	
3. Emerging	A common vision and mission have been developed by some staff members but have not been effectively communicated so that they guide the continuous improvement process.	✓
4. Not Evident	A common vision and mission have not been developed or updated or have been developed by a few staff members.	

Planning and Organization Standard 2 -Uses a data-driven and consensus-oriented process to develop and implement a school improvement plan that is focused on student performance		
1. Exemplary	<p>A school improvement plan has been developed using a data-driven and consensus-oriented process with input from nearly all stakeholders.</p> <p>The plan includes appropriate goals and strategies with a strong focus on increasing student performance.</p> <p>This process and plan consistently guide the work of the school staff.</p>	
2. Operational	<p>A school improvement plan has been developed using a data-driven and consensus-oriented process with input from most plan stakeholders.</p> <p>The plan includes appropriate goals and strategies with a focus on increasing student performance.</p>	✓
3. Emerging	<p>A school improvement plan has been developed with input from some stakeholders.</p> <p>The school improvement plan is based on incomplete data analysis with limited focus on student performance.</p>	
4. Not Evident	An up-to-date, data-driven school improvement plan focused on student performance is not in place.	

Effective Leadership Data

Planning and Organization Standard 3 -Monitors implementation of the school improvement plan and makes adjustments as needed		
1. Exemplary	<p>The goals and strategies of the school improvement plan are continually monitored by administrators, the school leadership team, and teacher leaders to evaluate the impact on student performance.</p> <p>Ongoing adjustments are made based on various performance, process, and perception data.</p>	
2. Operational	<p>he goals and strategies of the school improvement plan are regularly monitored by administrators and the school leadership team to evaluate the impact on student performance.</p> <p>Adjustments are made to the plan, as needed, based on the analysis of data.</p>	✓
3. Emerging	The goals and strategies of the school improvement plan are occasionally monitored by administrators.	
4. Not Evident	The goals and strategies of the school improvement plan are rarely, if ever, monitored.	

Planning and Organization Standard 4 -Monitors the use of available resources to support continuous improvement		
1. Exemplary	<p>The use of available resources (e.g., personnel, time, facilities, equipment, materials) to support continuous improvement is consistently monitored.</p> <p>School schedules and processes are designed to make effective use of personnel, time, materials, and equipment.</p>	
2. Operational	The use of available resources (e.g., personnel, time, facilities, equipment, materials) to support continuous improvement is frequently monitored.	✓
3. Emerging	The use of available resources to support continuous improvement is inconsistently monitored.	
4. Not Evident	The use of available resources to support continuous improvement is rarely, if ever, monitored.	

Effective Leadership Data

Planning and Organization Standard 5 -Develops, communicates, and implements rules, policies, schedules, and procedures to maximize student learning and staff effectiveness		
1. Exemplary	<p>Rules, policies, schedules, and procedures are developed with stakeholder input, effectively communicated, and consistently implemented throughout the school to maximize student learning and staff effectiveness.</p> <p>These rules, policies, schedules, and procedures are consistently reviewed and revised as needed.</p>	
2. Operational	<p>Rules, policies, schedules, and procedures are developed, communicated, and implemented throughout the school to maximize student learning and staff effectiveness.</p> <p>These rules, policies, schedules, and procedures are periodically reviewed and systematically revised as needed.</p>	
3. Emerging	Rules, policies, schedules, and procedures are developed but are not effectively communicated or are implemented inconsistently across the school.	✓
4. Not Evident	<p>Rules, policies, or procedures are not developed, are poorly communicated, or are ineffectively implemented.</p> <p>In some cases, rules, policies, schedules, or procedures are out of date or have become barriers to student learning or staff effectiveness.</p>	

Effective Leadership Data

Planning and Organization Standard 6 -Uses protocols to maintain the school campus and equipment providing a safe, clean, and inviting learning environment		
1. Exemplary	<p>Protocols (e.g., safety drills, tornado drills, inclement weather plans, current crisis plan, school-wide safety plan, maintenance protocols, facility-use protocols, functional custodial schedules) are used extensively to maintain the school campus and equipment providing a safe, clean, and inviting learning environment.</p> <p>A proactive maintenance process is in place, and repairs are completed in a satisfactory and timely manner, when needed.</p>	
2. Operational	<p>Protocols (e.g., safety drills, tornado drills, inclement weather plans, current crisis plan, school-wide safety plan, maintenance protocols, facility-use protocols, functional custodial schedules) are used to maintain the school campus and equipment providing a safe, clean, and inviting learning environment.</p> <p>The school and campus are clean, well-maintained, inviting, and safe.</p>	✓
3. Emerging	<p>Protocols are sometimes used to maintain the school campus and equipment.</p> <p>The school and campus are partially clean, maintained, and inviting, but some safety issues exist.</p>	
4. Not Evident	<p>Protocols do not exist or are rarely, if ever, used to maintain the school campus and equipment.</p> <p>The school and campus are not clean, maintained, or inviting, and safety issues exist.</p>	

2. DATA COLLECTION ANALYSIS

2.3 Professional Capacity

Analyze the LEA's data (including sections 2.6) and answer the guiding questions to determine existing trends and patterns that support the identification of professional capacity needs. Complete a data-informed self-rating for each Georgia School Performance Standard (GSPS). See the [Professional Capacity webinar](#) for additional information and guidance.

Professional Capacity Data

Leadership Standard 5 -Builds leadership capacity through shared decision-making and problem-solving		
1. Exemplary	Extensive structures exist for staff to engage in shared decision-making and problem-solving and to build their leadership capacities. Administrators collaborate consistently with staff members to gather input.	
2. Operational	Numerous structures exist for staff to engage in shared decision-making and problem-solving and to build their leadership capacities.	✓
3. Emerging	Some structures exist for staff to engage in shared decision-making, problem-solving, or both.	
4. Not Evident	Few, if any, structures exist for staff to engage in shared decision-making or problem-solving.	

Professional Learning Standard 1 -Aligns professional learning with needs identified through analysis of a variety of data		
1. Exemplary	Professional learning needs are identified and differentiated through a collaborative analysis process using a variety of data (e.g., student achievement data, examination of student work, process data, teacher and leader effectiveness data, action research data, perception data from students, staff, and families). Ongoing support is provided through differentiated professional learning.	
2. Operational	Professional learning needs are identified through a collaborative analysis process using a variety of data (e.g., student achievement data, examination of student work, process data, teacher and leader effectiveness data, action research data, perception data from students, staff, and families).	✓
3. Emerging	Professional learning needs are identified using limited sources of data.	
4. Not Evident	Professional learning needs are identified using little or no data.	

Professional Capacity Data

Professional Learning Standard 2 -Establishes a culture of collaboration among administrators and staff to enhance individual and collective performance		
1. Exemplary	Administrators and staff, as a foundational practice, consistently collaborate to support leadership and personal accountability and to enhance individual and collective performance (e.g., construct knowledge, acquire skills, refine practice, provide feedback). Teachers conduct action research and assume ownership of professional learning processes.	
2. Operational	Administrators and staff routinely collaborate to improve individual and collective performance (e.g., construct knowledge, acquire skills, refine practice, provide feedback).	✓
3. Emerging	Administrators and staff sometimes collaborate to improve individual and collective performance.	
4. Not Evident	Administrators and staff rarely collaborate to improve individual and collective performance.	

Professional Learning Standard 3 -Defines expectations for implementing professional learning		
1. Exemplary	Administrators, teacher leaders, or both consistently define expectations for the implementation of professional learning, including details regarding the stages of implementation and how monitoring will occur as implementation progresses.	
2. Operational	Administrators, teacher leaders, or both regularly define expectations for the implementation of professional learning.	
3. Emerging	Administrators, teacher leaders, or both occasionally define expectations for the implementation of professional learning.	✓
4. Not Evident	Administrators, teacher leaders, or both rarely, if ever, define expectations for the implementation of professional learning.	

Professional Capacity Data

Professional Learning Standard 4 -Uses multiple professional learning designs to support the various learning needs of the staff		
1. Exemplary	<p>Staff members actively participate in job-embedded professional learning that engages collaborative teams in a variety of appropriate learning designs (e.g., collaborative lesson study, analysis of student work, problem solving sessions, curriculum development, coursework, action research, classroom observations, online networks).</p> <p>Professional learning includes extensive follow-up with descriptive feedback and coaching.</p>	
2. Operational	<p>Staff members actively participate in professional learning, most of which is job-embedded, which includes multiple designs (e.g., collaborative lesson study, analysis of student work, problem-solving sessions, curriculum development, coursework, action research, classroom observations, online networks) to support their various learning needs.</p> <p>Professional learning includes follow-up with feedback and coaching.</p>	
3. Emerging	Some staff members are engaged in professional learning that makes use of more than one learning design to address their identified needs.	✓
4. Not Evident	Staff members receive single, stand-alone professional learning events that are informational and mostly large-group presentation designs.	

Professional Learning Standard 5 -Allocates resources and establishes systems to support and sustain effective professional learning		
1. Exemplary	<p>Extensive resources (e.g., substitute teachers, materials, handouts, tools, stipends, facilitators, technology) and systems (e.g., conducive schedules, adequate collaborative time, model classrooms) are allocated to support and sustain effective professional learning.</p> <p>Opportunities to practice skills, receive follow-up, feedback, and coaching are provided to support the effectiveness of professional learning.</p>	
2. Operational	Adequate resources (e.g., substitute teachers, materials, handouts, tools, stipends, facilitators, technology) and systems (e.g., conducive schedules, adequate collaborative time, model classrooms) are in place to support and sustain professional learning.	✓
3. Emerging	Some resources and systems are allocated to support and sustain professional learning.	
4. Not Evident	Few, if any, resources and systems are provided to support and sustain professional learning.	

Professional Capacity Data

Professional Learning Standard 6 -Monitors and evaluates the impact of professional learning on staff practices and student learning		
1. Exemplary	Monitoring and evaluating the impact of professional learning on staff practices and increases in student learning occurs extensively. Evaluation results are used to identify and implement processes to extend student learning.	
2. Operational	Monitoring and evaluating the impact of professional learning on staff practices and student learning occurs routinely.	
3. Emerging	Monitoring and evaluating the impact of professional learning on staff practices occurs sporadically.	✓
4. Not Evident	Monitoring and evaluating the impact of professional learning on staff practices occurs rarely, if ever.	

2. DATA COLLECTION ANALYSIS

2.4 Family and Community Engagement

Analyze the LEA's data (including sections 2.6) and answer the guiding questions to determine existing trends and patterns that support the identification of needs related to family and community engagement. Complete a data-informed self-rating for each Georgia School Performance Standard (GSPS). See the [Family and Community Engagement webinar](#) for additional information and guidance. Visit Georgia's Family Connection Partnership's [KIDS COUNT](#) for additional data.

Family and Community Engagement Data

Family and Community Engagement Standard 1 -Creates an environment that welcomes, encourages, and connects family and community members to the school		
1. Exemplary	The school has a well-established, inviting learning environment that welcomes, encourages, and connects family and community members to the school. Numerous opportunities are given to family members to become actively engaged in school-related events and improvement efforts as participants, event managers, and workers.	
2. Operational	The school has created an environment that welcomes, encourages, and connects family and community members to the school.	
3. Emerging	The school has made some progress toward creating an environment that welcomes, encourages, and connects family and community members to the school.	✓
4. Not Evident	The school has not created an environment that welcomes, encourages, or connects family and community members to the school.	

Family and Community Engagement Standard 2 -Establishes structures that promote clear and open communication between the school and stakeholders		
1. Exemplary	Extensive structures that promote clear and open communication between the school and stakeholders have been effectively established and implemented. Structures are continuously monitored for reliable and interactive communication.	
2. Operational	Most structures that promote clear and open communication between the school and stakeholders have been effectively established and implemented.	✓
3. Emerging	Some structures that promote clear and open communication between the school and stakeholders exist.	
4. Not Evident	Few, if any, structures that promote clear and open communication between the school and stakeholders exist.	

Family and Community Engagement Data

Family and Community Engagement Standard 3 -Establishes relationships and decision-making processes that build capacity for family and community engagement in the success of students		
1. Exemplary	<p>A wide variety of relationships and collaborative decision-making processes (e.g., business partnerships, school councils, parent or family organizations, academic and extra-curricular booster clubs, civic organizations, tutoring services, post-secondary partnerships) are pervasive in promoting student success and well being.</p> <p>Expectations for family and community engagement are embedded in the culture and result in stakeholders being actively involved in decision-making.</p>	
2. Operational	Numerous relationships and decision-making processes (e.g., business partnerships, school councils, parent or family organizations, academic and extra-curricular booster clubs, civic organizations, tutoring services) effectively build capacity for family and community engagement in the success of students.	✓
3. Emerging	Limited relationships and decision-making processes have been initiated by the school to build capacity for family and community engagement.	
4. Not Evident	Relationships and decision-making processes for families and the community are non-existent, or those that do exist contribute minimally to student success.	

Family and Community Engagement Data

Family and Community Engagement Standard 4 -Communicates academic expectations and current student achievement status to families		
1. Exemplary	<p>The school staff provides families with ongoing, detailed academic expectations and/or graduation status (e.g., four-year graduation plans, syllabi, academic advisement protocols).</p> <p>Extensive communication related to the current achievement level of individual students is provided (e.g., progress reports, student-led parent conferences, report cards, reading level reports, state test reports, school-based assessment reports, online reporting system).</p>	
2. Operational	<p>The school staff communicates academic expectations and/or graduation status (e.g., four-year graduation plans, syllabi, academic advisement protocols) throughout the year.</p> <p>Regular communication related to the current achievement level of individual students is provided (e.g., progress reports, parent conferences, report cards, reading level reports, state test reports, school-based assessment reports, online reporting system).</p>	✓
3. Emerging	<p>The school staff communicates some academic expectations at the start of the year.</p> <p>Some communication related to the current achievement level of individual students is provided.</p>	
4. Not Evident	<p>The school staff does little to inform families of academic expectations.</p> <p>Little, if any, communication related to the current achievement level of individual students is provided.</p>	

Family and Community Engagement Standard 5 -Develops the capacity of families to use support strategies at home that will enhance academic achievement		
1. Exemplary	The school continually develops the capacity (e.g., parent training, lunch and learn, make-it and take-it) of families to use support strategies at home that will enhance academic achievement.	
2. Operational	The school frequently develops the capacity (e.g., parent training, lunch and learn, make-it and take-it) of families to use support strategies at home that will enhance academic achievement.	
3. Emerging	The school occasionally develops the capacity of families to use support strategies at home that will enhance academic achievement.	✓
4. Not Evident	The school seldom, if ever, develops the capacity of families to use support strategies at home that will enhance academic achievement.	

Family and Community Engagement Data

Family and Community Engagement Standard 6 -Connects families with agencies and resources in the community to meet the needs of students		
1. Exemplary	The school has a systematic process in place to connect families with an array of agencies and resources (e.g., Y-Clubs, after-school programs, health and counseling services, community service agencies, civic organizations, tutoring services) to meet the needs of students.	
2. Operational	The school regularly connects families to agencies and resources in the community (e.g., Y-Clubs, after-school programs, health and counseling services, community service agencies, civic organizations, tutoring services) to meet the needs of students.	✓
3. Emerging	The school sometimes connects families to agencies and resources in the community to meet the needs of students.	
4. Not Evident	The school does little to connect families with agencies and resources in the community to meet the needs of students.	

2. DATA COLLECTION ANALYSIS

2.5 Supportive Learning Environment

Analyze the LEA's data (including sections 2.6) and answer the guiding questions to determine existing trends and patterns that support the identification of needs related to a supportive learning environment. Complete a data-informed self-rating for each Georgia School Performance Standard (GSPS). Student subgroups with a count of less than 15 are denoted by "TFS" (too few students). See the [Supportive Learning Environment webinar](#) for additional information and guidance.

Supportive Learning Environment Data

Instruction Standard 1 -Provides a supportive and well-managed environment conducive to learning		
1. Exemplary	A supportive and well-managed environment conducive to learning is evident throughout the school. Students consistently stay on-task and take responsibility for their own actions.	
2. Operational	A supportive and well-managed environment conducive to learning is evident in most classrooms.	✓
3. Emerging	A supportive and well-managed environment conducive to learning is evident in some classrooms.	
4. Not Evident	A supportive and well-managed environment conducive to learning is evident in few, if any, classrooms.	

Instruction Standard 2 -Creates an academically challenging learning environment		
1. Exemplary	Nearly all teachers create an academically challenging, learning environment (e.g., higher-order thinking skills and processes, active student engagement, relevance, collaboration). Students consistently work independently and in teams to solve real-world problems that require advanced effort, decision-making, and critical and creative thinking.	
2. Operational	Most teachers create an academically challenging, learning environment (e.g., higher-order thinking skills and processes, active student engagement, relevance, collaboration).	✓
3. Emerging	Some teachers create an academically challenging learning environment.	
4. Not Evident	Few, if any, teachers create an academically challenging learning environment.	

Supportive Learning Environment Data

Instruction Standard 8 -Establishes a learning environment that empowers students to actively monitor their own progress		
1. Exemplary	Nearly all students use tools (e.g., rubrics, checklists, exemplars) to actively monitor their own progress. Nearly all students develop a sense of personal responsibility and accountability by engaging in record keeping, self-monitoring, sharing, exhibiting, and self-reflection.	
2. Operational	Most students use tools (e.g., rubrics, checklists, exemplars) to actively monitor their own progress.	
3. Emerging	Some students use tools to actively monitor their own progress.	✓
4. Not Evident	Few, if any, students use tools to actively monitor their own progress.	

School Culture Standard 1 -Develops, communicates, and implements rules, practices, and procedures to maintain a safe, orderly learning environment		
1. Exemplary	Rules, practices, and procedures that maintain a safe, orderly learning environment are proactively developed, communicated, and consistently implemented across the school. These rules, practices, and procedures are continually monitored and revised as needed.	
2. Operational	Rules, practices, and procedures that maintain a safe, orderly learning environment are developed, communicated, and implemented.	✓
3. Emerging	Rules, practices, and procedures are developed and communicated but are ineffective or inconsistently implemented across the school.	
4. Not Evident	Rules, practices, and procedures that maintain a safe, orderly, learning environment are not developed nor updated or are poorly communicated.	

Supportive Learning Environment Data

School Culture Standard 2 -Establishes a culture of trust and respect that promotes positive interactions and a sense of community		
1. Exemplary	<p>Extensive evidence (e.g., positive and respectful interactions, appreciation of diversity, tolerance, understanding) exists that a culture of trust and respect has been established.</p> <p>A pervasive commitment to promoting positive interactions and a sense of community is evident.</p>	
2. Operational	<p>Evidence (e.g., positive and respectful interactions, appreciation of diversity, tolerance, understanding) exists that a culture of trust and respect has been established.</p> <p>A sustained commitment to promoting positive interactions and a sense of community is evident.</p>	
3. Emerging	<p>Some evidence exists that a culture of trust and respect has been established.</p> <p>A limited commitment to promoting positive interactions and a sense of community is evident.</p>	✓
4. Not Evident	<p>Little or no evidence exists that a culture of trust and respect has been established.</p> <p>Unresolved conflicts interfere with a sense of community.</p>	

School Culture Standard 3 -Establishes a culture that supports the college and career readiness of students		
1. Exemplary	<p>Extensive evidence (e.g., advisement, career counseling, transition coaching, high expectations) exists that the beliefs and practices of the school support the college and career readiness of students.</p> <p>The school culture supports addressing individual achievement needs and strengths to prepare students for success.</p>	
2. Operational	Evidence (e.g., advisement, career counseling, transition coaching, high expectations) exists that the beliefs and practices of the school support the college and career readiness of students.	✓
3. Emerging	Some evidence exists that the school supports the college and career readiness of students.	
4. Not Evident	Little or no evidence exists that the school supports the college and career readiness of students.	

Supportive Learning Environment Data

School Culture Standard 4 -Supports the personal growth and development of students		
1. Exemplary	The school staff consistently provides a comprehensive system of support (e.g., counseling, mentoring, advisement, coaching, goal setting, time management, problem solving) to maximize the personal growth and development of nearly all students.	
2. Operational	The school staff regularly provides support (e.g., counseling, mentoring, advisement, coaching, goal setting, time management, problem solving) to enhance the personal growth and development of students.	✓
3. Emerging	The school staff sporadically supports the personal growth and development of students.	
4. Not Evident	The school staff does little to support the personal growth and development of students.	

School Culture Standard 5 -Recognizes and celebrates achievements and accomplishments of students and staff		
1. Exemplary	<p>The school community consistently recognizes and celebrates the achievements and accomplishments of students and staff.</p> <p>The celebrations are publicized within the school and to the community and support the culture of the school.</p>	
2. Operational	The school community regularly recognizes and celebrates the achievements and accomplishments of students and staff.	✓
3. Emerging	The school community periodically recognizes or celebrates the achievements or accomplishments of students and/or staff.	
4. Not Evident	The school community rarely, if ever, recognizes or celebrates the achievements or accomplishments of students or staff.	

Supportive Learning Environment Data

Planning and Organization Standard 1 -Shares a common vision and mission that define the school culture and guide the continuous improvement process		
1. Exemplary	<p>A common vision and mission have been collaboratively developed and communicated to nearly all stakeholders.</p> <p>The culture of the school has been deeply defined over time by the vision and mission, which are updated as needed.</p> <p>The daily work and practices of staff consistently demonstrate a sustained commitment to continuous improvement.</p>	
2. Operational	<p>A common vision and mission have been developed through a collaborative process and communicated to most stakeholders.</p> <p>The vision and mission define the culture of the school and guide the continuous improvement process.</p>	✓
3. Emerging	A common vision and mission have been developed by some staff members but have not been effectively communicated so that they guide the continuous improvement process.	
4. Not Evident	A common vision and mission have not been developed or updated or have been developed by a few staff members.	

2. DATA COLLECTION ANALYSIS

2.6 Data Analysis Questions

Analyze the LEA's data and answer the guiding questions to determine existing trends and patterns that support the identification of demographic and financial needs. Student subgroups with a count of less than 15 are denoted by "TFS" (too few students).

What perception data did you use? [examples: student perceptions about school climate issues (health survey, violence, prejudice, bullying, etc.); student/parent perceptions about the effectiveness of programs or interventions; student understanding of relationship of school to career or has an academic plan]	Reflections of the school Leadership Team, 2022-23 Georgia Student Health Survey.
What does the perception data tell you? (perception data can describe people's knowledge, attitudes, beliefs, perceptions, competencies; perception data can also answer the question "What do people think they know, believe, or can do?")	We have a safe and inviting school with high expectations for student learning. There are some areas of concern reflected in the Georgia Student Health Survey, but they have already been identified by the school and county-level counseling and climate teams with support systems in place.
What process data did you use? (examples: student participation in school activities, sports, clubs, arts; student participation in special programs such as peer mediation, counseling, skills conferences; parent/student participation in events such as college information meetings and parent workshops)	All of our students participate in one-on-one counseling sessions each year. Most of our students participate in clubs, athletics and other extracurricular activities. Several parent/student nights are held throughout the year to share information about various topics.
What does the process data tell you? (process data describes the way programs are conducted; provides evidence of participant involvement in programs; answers the question "What did you do for whom?")	We provide the knowledge and skills for all of our students to be well-rounded and prepared for post-secondary options.

What achievement data did you use?	EOC, ACT/SAT, AP scores and CCRPI
------------------------------------	-----------------------------------

What does your achievement data tell you?	There are achievement gaps for SWD's and ED students.
---	---

What demographic data did you use?	Data from IC
------------------------------------	--------------

What does the demographic data tell you?	40% of our students are economically disadvantaged.
--	---

3. NEEDS IDENTIFICATION AND ROOT CAUSE ANALYSIS

3.1 Strengths and Challenges Based on Trends and Patterns

Read the trends and patterns summaries from each section of the data analysis process. Use the information in these summaries to complete 3.2 and 3.3. Using the summaries in 3.1 and other local data, describe the strengths and challenges or answer the guiding questions for each program. Include strengths and challenges related to: a) general program implementation, and b) students and adults involved in or affected by the program. Focus on strengths and challenges that will assist in the identification of needs during 3.2. Watch the [Identifying Need webinar](#) for additional information and guidance.

Strengths and Challenges Based on Trends and Patterns

<p>Coherent Instructional: Summarize the coherent instructional system trends and patterns observed by the team while completing this section of the report. What are the important trends and patterns that will support the identification of student, teacher, and leader needs?</p>	<p>Research-based instructional practices; instruction mirrors assessment rigor Evidence: understanding expectations in the standards; vertical alignment; pacing; revisiting previously taught concepts and skills Evidence: Assessment alignment with standards expectations; frequent formative assessment to drive instruction; performance feedback to students</p>
<p>Effective Leadership: Summarize the effective leadership trends and patterns observed by the team while completing this section of the report. What are the important trends and patterns that will support the identification of student, teacher, and leader needs?</p>	<p>Evidence: High-performing teams within a professional learning community process/framework; focus on improving performance; everyone understands roles, responsibilities & accountability; core values and beliefs</p>
<p>Professional Capacity: Summarize the professional capacity trends and patterns observed by the team while completing this section of the report. What are the important trends and patterns that will support the identification of student, teacher, and leader needs?</p>	<p>Evidence: Class/course placements; certification; scheduling; school improvement planning & implementation</p>

Strengths and Challenges Based on Trends and Patterns

<p>Family and Community Engagement: Summarize the family and community engagement trends and patterns observed by the team while completing this section of the report. What are the important trends and patterns that will support the identification of student, teacher, and leader needs?</p>	<p>Parent nights, attendance support meetings.</p>
--	--

<p>Supportive Learning Environment: Summarize the supportive learning environment trends and patterns observed by the team while completing this section of the report. What are the important trends and patterns that will support the identification of student, teacher, and leader needs?</p>	<p>Climate rating star is a 4.</p>
--	------------------------------------

<p>Demographic and Financial: Summarize the demographic and financial trends and patterns observed by the team while completing this section of the report. What are the important trends and patterns that will support the identification of student, teacher, and leader needs?</p>	<p>Supported by the district office.</p>
--	--

<p>Student Achievement: Summarize the student achievement trends and patterns observed by the team while completing this section of the report. What are the important trends and patterns that will support the identification of student, teacher, and leader needs?</p>	<p>Evidence: Assessment alignment with standards expectations; frequent, formative assessment to drive instruction; performance feedback to students</p>
--	--

IDEA – Special Education, Economically Disadvantaged Children, and English Learners.

IDEA – Special Education, Economically Disadvantaged Children, and English Learners.

Using the summaries in 3.1 and other local data, describe the strengths and challenges or answer the guiding questions for each program. Include strengths and challenges related to: a) general program implementation, and b) students and adults involved in or affected by the program. Focus on strengths and challenges that will assist in the identification of needs during 3.3. Watch the [Identifying Need webinar](#) for additional information and guidance.

Strengths	Resource classrooms and effective Co-Teachers
Challenges	Gaps in their learning and missing basic skills for our students with SWD

3. NEEDS IDENTIFICATION AND ROOT CAUSE ANALYSIS

3.2 Identification and Prioritization of Overarching Needs

Use the results of 3.1 to identify the overarching needs of the LEA. Determine the priority order of the identified needs based on data, team member and stakeholder knowledge, and answers to questions in the table below. Be sure to address the major program challenges identified in 3.1. Watch the [Identifying Need webinar](#) for additional information and guidance.

Overarching Need # 1

Overarching Need	Increasing the weighted proficiency on EOC assessments
How severe is the need?	High
Is the need trending better or worse over time?	No Change
Can Root Causes be Identified?	Yes
Priority Order	5

Additional Considerations	
---------------------------	--

Overarching Need # 2

Overarching Need	Improving at-risk students performance
How severe is the need?	High
Is the need trending better or worse over time?	No Change
Can Root Causes be Identified?	Yes
Priority Order	4

Additional Considerations	
---------------------------	--

3. NEEDS IDENTIFICATION AND ROOT CAUSE ANALYSIS

3.3 Root Cause Analysis

Select the top 2-4 overarching needs from 3.2. Conduct a separate root cause analysis (RCA) for each need. Any RCA tools and resources can be used, but suggestions are available as part of the [Identifying Need webinar](#). After describing the RCA process, complete a table for each selected overarching need.

Overarching Need - Increasing the weighted proficiency on EOC assessments

Root Cause # 1

Root Causes to be Addressed	Attendance and engagement
This is a root cause and not a contributing cause or symptom	Yes
This is something we can affect	Yes
Impacted Programs	IDEA - Special Education School and District Effectiveness Title I - Part A - Improving Academic Achievement of Disadvantaged Title I, Part A - Foster Care Program Title I, Part A - Parent and Family Engagement Program Title I, Part C - Education of Migratory Children Title I, Part D - Programs for Neglected or Delinquent Children Title III - Language Instruction for English Learners and Immigrant Students Title IX, Part A - McKinney-Vento Education for Homeless Children and Youth Program Others :

Additional Responses	
----------------------	--

Root Cause # 2

Root Causes to be Addressed	Gaps in the learning
This is a root cause and not a contributing cause or symptom	Yes
This is something we can affect	Yes
Impacted Programs	IDEA - Special Education School and District Effectiveness Title I - Part A - Improving Academic Achievement of Disadvantaged Title I, Part A - Foster Care Program Title I, Part A - Parent and Family Engagement Program

Root Cause # 2

Impacted Programs	Title I, Part C - Education of Migratory Children Title I, Part D - Programs for Neglected or Delinquent Children Title III - Language Instruction for English Learners and Immigrant Students Title IX, Part A - McKinney-Vento Education for Homeless Children and Youth Program Others :
-------------------	---

Additional Responses	
----------------------	--

Root Cause # 3

Root Causes to be Addressed	Basic Skills not Mastered
This is a root cause and not a contributing cause or symptom	Yes
This is something we can affect	Yes
Impacted Programs	IDEA - Special Education School and District Effectiveness Title I - Part A - Improving Academic Achievement of Disadvantaged Title I, Part A - Foster Care Program Title I, Part A - Parent and Family Engagement Program Title I, Part C - Education of Migratory Children Title I, Part D - Programs for Neglected or Delinquent Children Title III - Language Instruction for English Learners and Immigrant Students Title IX, Part A - McKinney-Vento Education for Homeless Children and Youth Program Others :

Additional Responses	
----------------------	--

Overarching Need - Improving at-risk students performance

Root Cause # 1

Root Cause # 1

Root Causes to be Addressed	Attendance and engagement
This is a root cause and not a contributing cause or symptom	Yes
This is something we can affect	Yes
Impacted Programs	IDEA - Special Education School and District Effectiveness Title I - Part A - Improving Academic Achievement of Disadvantaged Title I, Part A - Foster Care Program Title I, Part A - Parent and Family Engagement Program Title I, Part C - Education of Migratory Children Title I, Part D - Programs for Neglected or Delinquent Children Title III - Language Instruction for English Learners and Immigrant Students Title IX, Part A - McKinney-Vento Education for Homeless Children and Youth Program Others :

Additional Responses	
----------------------	--

Root Cause # 2

Root Causes to be Addressed	Gaps in the learning
This is a root cause and not a contributing cause or symptom	Yes
This is something we can affect	Yes
Impacted Programs	IDEA - Special Education School and District Effectiveness Title I - Part A - Improving Academic Achievement of Disadvantaged Title I, Part A - Foster Care Program Title I, Part A - Parent and Family Engagement Program Title I, Part C - Education of Migratory Children Title I, Part D - Programs for Neglected or Delinquent Children Title III - Language Instruction for English Learners and Immigrant Students Title IX, Part A - McKinney-Vento Education for Homeless Children and Youth Program Others :

Additional Responses	
----------------------	--

Root Cause # 3

Root Causes to be Addressed	Basic skills not mastered
This is a root cause and not a contributing cause or symptom	Yes
This is something we can affect	Yes
Impacted Programs	IDEA - Special Education School and District Effectiveness Title I - Part A - Improving Academic Achievement of Disadvantaged Title I, Part A - Foster Care Program Title I, Part A - Parent and Family Engagement Program Title I, Part C - Education of Migratory Children Title I, Part D - Programs for Neglected or Delinquent Children Title III - Language Instruction for English Learners and Immigrant Students Title IX, Part A - McKinney-Vento Education for Homeless Children and Youth Program Others :

Additional Responses	
----------------------	--



School Improvement Plan 2024 - 2025



Bulloch County
Southeast Bulloch High School

SCHOOL IMPROVEMENT PLAN

1 General Improvement Plan Information

General Improvement Plan Information

District	Bulloch County
School Name	Southeast Bulloch High School
Team Lead	Dr. Julie Mizell
Federal Funding Options to Be Employed (SWP Schools) in this Plan (Select all that apply)	Traditional funding (Federal funds budgeted separately) 'FUND 400' - Consolidation of Federal funds only Consolidation of Funds – Fund 150: Consolidation of State/Local and Federal Funds
Select the Funds that the LEA anticipates will be consolidated	Title I, Part A

Factors(s) Used by District to Identify Students in Poverty (Select all that apply)	
<input checked="" type="checkbox"/>	Free/Reduced meal application
<input type="checkbox"/>	Community Eligibility Program (CEP) - Direct Certification ONLY
<input type="checkbox"/>	Other (if selected, please describe below)

2. SCHOOL IMPROVEMENT GOALS

2.1 Overarching Need # 1

Overarching Need

Overarching Need as identified in CNA Section 3.2	Increasing the weighted proficiency on EOC assessments
Root Cause # 1	Attendance and engagement
Root Cause # 2	Basic Skills not Mastered
Root Cause # 3	Gaps in the learning
Goal	Southeast Bulloch High School will increase its overall weighted content mastery score by 3% from 67.8% in 2022 to 68.8% in 2023; to 69.7% in 2024; to 70.6% in 2025 by implementing Professional Learning Communities.

Action Step # 1

Action Step	Algebra I, US History, and Biology teachers will display learning targets for priority standards and refer to the learning targets during the instruction.
Funding Sources	N/A
Subgroups	Economically Disadvantaged Foster Homeless English Learners Migrant Race / Ethnicity / Minority Student with Disabilities Immigrant
Systems	Coherent Instruction
Method for Monitoring Implementation	Teacher Clarity Walkthroughs, Quarterly School Impact Check
Method for Monitoring Effectiveness	Teacher Clarity Walkthrough Forms, PLC Summarizers
Position/Role Responsible	Administration
Timeline for Implementation	Quarterly

What partnerships, if any, with IHEs, business, Non-Profits, Community based organizations, or any private entity with a demonstrated record of success is the LEA implementing in carrying out this action step(s)?	
--	--

Action Step # 1

What partnerships, if any, with IHEs, business, Non-Profits, Community based organizations, or any private entity with a demonstrated record of success is the LEA implementing in carrying out this action step(s)?	
--	--

Action Step # 2

Action Step	Algebra I, US History, and Biology teachers will display and reference the success criteria in instruction.
Funding Sources	N/A
Subgroups	Economically Disadvantaged Foster Homeless English Learners Migrant Race / Ethnicity / Minority Student with Disabilities Immigrant
Systems	Coherent Instruction
Method for Monitoring Implementation	Teacher Clarity Walkthroughs, Quarterly School Impact Check
Method for Monitoring Effectiveness	Teacher Clarity Walkthrough Forms, PLC Summarizers
Position/Role Responsible	Administration
Timeline for Implementation	Quarterly

What partnerships, if any, with IHEs, business, Non-Profits, Community based organizations, or any private entity with a demonstrated record of success is the LEA implementing in carrying out this action step(s)?	
--	--

Action Step # 3

Action Step	Beginning 2nd Semester, Social Studies teachers (except US History) will deconstruct priority standards to include tiered vocabulary and creation of progressive learning targets. Teachers will submit the work to the district team for feedback.
Funding Sources	N/A
Subgroups	Economically Disadvantaged Foster Homeless English Learners Migrant Race / Ethnicity / Minority Student with Disabilities Immigrant
Systems	Coherent Instruction
Method for Monitoring Implementation	Quarterly School Impact Check
Method for Monitoring Effectiveness	Teacher Clarity Monitoring Document, PLC Summarizers
Position/Role Responsible	Administration
Timeline for Implementation	Quarterly

What partnerships, if any, with IHEs, business, Non-Profits, Community based organizations, or any private entity with a demonstrated record of success is the LEA implementing in carrying out this action step(s)?	
--	--

Action Step # 4

Action Step	Beginning 2nd Semester, Social Studies teachers (except US History) will display learning targets for priority standards and refer to the learning targets during instruction.
Funding Sources	N/A
Subgroups	Economically Disadvantaged Foster Homeless English Learners Migrant

Action Step # 4

Subgroups	Race / Ethnicity / Minority Student with Disabilities Immigrant
Systems	Coherent Instruction
Method for Monitoring Implementation	Quarterly School Impact Check
Method for Monitoring Effectiveness	Teacher Clarity Walkthrough Form, PLC Summarizers
Position/Role Responsible	Administration
Timeline for Implementation	Quarterly

What partnerships, if any, with IHEs, business, Non-Profits, Community based organizations, or any private entity with a demonstrated record of success is the LEA implementing in carrying out this action step(s)?	
--	--

Action Step # 5

Action Step	School Improvement Specialist will attend all HS teacher clarity sessions to observe (focus on process used to guide teachers); Academic dept chairs will attend teacher clarity sessions to observe.
Funding Sources	N/A
Subgroups	Economically Disadvantaged Foster Homeless English Learners Migrant Race / Ethnicity / Minority Student with Disabilities Immigrant
Systems	Coherent Instruction
Method for Monitoring Implementation	Quarterly School Impact Check
Method for Monitoring Effectiveness	Sign-in sheets

Action Step # 5

Position/Role Responsible	Administration
Timeline for Implementation	Quarterly

What partnerships, if any, with IHEs, business, Non-Profits, Community based organizations, or any private entity with a demonstrated record of success is the LEA implementing in carrying out this action step(s)?	
--	--

2. SCHOOL IMPROVEMENT GOALS

2.2 Overarching Need # 2

Overarching Need

Overarching Need as identified in CNA Section 3.2	Improving at-risk students performance
Root Cause # 1	Attendance and engagement
Root Cause # 2	Basic skills not mastered
Root Cause # 3	Gaps in the learning
Goal	Southeast Bulloch High School will increase its 4-year graduation rate by 3% from 86.2% in 2022 to 86.6% in 2023; to 87.0% in 2024; to 87.4% in 2025 by implementing Implement a comprehensive MTSS/School Climate plan to ensure students are supported, engaged, and successful.

Action Step # 1

Action Step	Establish an MTSS Team with clearly defined roles and expectations
Funding Sources	N/A
Subgroups	Economically Disadvantaged Foster Homeless English Learners Migrant Race / Ethnicity / Minority Student with Disabilities Immigrant
Systems	Effective Leadership
Method for Monitoring Implementation	Quarterly School Impact Check
Method for Monitoring Effectiveness	MTSS Team Roster, List of roles and expectations
Position/Role Responsible	MTSS and teachers
Timeline for Implementation	Quarterly

What partnerships, if any, with IHEs, business, Non-Profits, Community based organizations, or any private entity with a demonstrated record of success is the LEA implementing in carrying out this action step(s)?	
--	--

Action Step # 1

What partnerships, if any, with IHEs, business, Non-Profits, Community based organizations, or any private entity with a demonstrated record of success is the LEA implementing in carrying out this action step(s)?	
--	--

Action Step # 2

Action Step	MTSS Team will meet as a collaborative PLC monthly
Funding Sources	N/A
Subgroups	Economically Disadvantaged Foster Homeless English Learners Migrant Race / Ethnicity / Minority Student with Disabilities Immigrant
Systems	Professional Capacity
Method for Monitoring Implementation	PLC Minutes, Quarterly School Impact Check
Method for Monitoring Effectiveness	# documented meetings team has, PLC Summarizer
Position/Role Responsible	MTSS Team
Timeline for Implementation	Quarterly

What partnerships, if any, with IHEs, business, Non-Profits, Community based organizations, or any private entity with a demonstrated record of success is the LEA implementing in carrying out this action step(s)?	
--	--

Action Step # 3

Action Step	MTSS Team members will meet with their supported grade levels to share student progress and data monthly
Funding Sources	N/A
Subgroups	Economically Disadvantaged Foster Homeless English Learners Migrant Race / Ethnicity / Minority Student with Disabilities Immigrant
Systems	Effective Leadership
Method for Monitoring Implementation	PLC Minutes, Quarterly School Impact Check
Method for Monitoring Effectiveness	# documented meetings team has, PLC Summarizer
Position/Role Responsible	MTSS Team
Timeline for Implementation	Quarterly

What partnerships, if any, with IHEs, business, Non-Profits, Community based organizations, or any private entity with a demonstrated record of success is the LEA implementing in carrying out this action step(s)?	
--	--

Action Step # 4

Action Step	Teachers will implement a quarterly reward system to promote Attendance.
Funding Sources	N/A
Subgroups	Economically Disadvantaged Foster Homeless English Learners Migrant Race / Ethnicity / Minority Student with Disabilities Immigrant

Action Step # 4

Systems	Supportive Learning Environment
Method for Monitoring Implementation	Attendance report, Quarterly School Impact Check
Method for Monitoring Effectiveness	# of award events held each quarter
Position/Role Responsible	MTSS Team
Timeline for Implementation	Others : Pre-Planning

What partnerships, if any, with IHEs, business, Non-Profits, Community based organizations, or any private entity with a demonstrated record of success is the LEA implementing in carrying out this action step(s)?	
--	--

Action Step # 5

Action Step	MTSS Team will implement a mentor program for Tier 3 (Attendance, Behavior, and Course Credit) students.
Funding Sources	N/A
Subgroups	Economically Disadvantaged Foster Homeless English Learners Migrant Race / Ethnicity / Minority Student with Disabilities Immigrant
Systems	Supportive Learning Environment
Method for Monitoring Implementation	List of mentors/mentees, Quarterly School Impact Check
Method for Monitoring Effectiveness	% of mentor teachers documenting the required number meetings
Position/Role Responsible	MTSS Team, teachers
Timeline for Implementation	Quarterly

Action Step # 5

What partnerships, if any, with IHEs, business, Non-Profits, Community based organizations, or any private entity with a demonstrated record of success is the LEA implementing in carrying out this action step(s)?	
--	--

Action Step # 6

Action Step	Faculty and staff will sponsor a club that meets twice a quarter and will serve as a mentor for club members.
Funding Sources	N/A
Subgroups	Economically Disadvantaged Foster Homeless English Learners Migrant Race / Ethnicity / Minority Student with Disabilities N/A Immigrant
Systems	Supportive Learning Environment
Method for Monitoring Implementation	Club lists and rosters, Quarterly Impact Check
Method for Monitoring Effectiveness	# of club meetings
Position/Role Responsible	MTSS Team
Timeline for Implementation	Quarterly

What partnerships, if any, with IHEs, business, Non-Profits, Community based organizations, or any private entity with a demonstrated record of success is the LEA implementing in carrying out this action step(s)?	
--	--

Action Step # 7

Action Step	Teachers will host a special 9th Grade Open House.
Funding Sources	N/A
Subgroups	Economically Disadvantaged Foster Homeless English Learners Migrant Race / Ethnicity / Minority Student with Disabilities N/A Immigrant
Systems	Family and Community Engagement
Method for Monitoring Implementation	Quarterly Impact Check
Method for Monitoring Effectiveness	% of faculty and staff that participated in the special 9th grade Open House
Position/Role Responsible	MTSS Team
Timeline for Implementation	Others : Pre-Planning

What partnerships, if any, with IHEs, business, Non-Profits, Community based organizations, or any private entity with a demonstrated record of success is the LEA implementing in carrying out this action step(s)?	
--	--

Action Step # 8

Action Step	Complete Book Study for Do You Know Enough About Me to Teach Me?
Funding Sources	N/A
Subgroups	Economically Disadvantaged Foster Homeless English Learners Migrant Race / Ethnicity / Minority Student with Disabilities N/A Immigrant

Action Step # 8

Systems	Professional Capacity Supportive Learning Environment
Method for Monitoring Implementation	Questions for each chapter, Quarterly Impact Check
Method for Monitoring Effectiveness	% of teachers who participated in the book study
Position/Role Responsible	Administration
Timeline for Implementation	Others : Pre-Planning

What partnerships, if any, with IHEs, business, Non-Profits, Community based organizations, or any private entity with a demonstrated record of success is the LEA implementing in carrying out this action step(s)?	
--	--

3. REQUIRED QUESTIONS

3.1 Stakeholders, Coordination of Activities, Serving Children, and PQ

Required Questions

1. In developing this plan, briefly describe how the school sought advice from individuals (teachers, staff, other school leaders, paraprofessionals, specialized instructional support personnel, parents, community partners, and other stakeholders).	Surveys, Leadership Meetings, PLC meetings, and School Council meetings
2. Describe how the school will ensure that low-income and minority children enrolled in the Title I school are not served at disproportionate rates by ineffective, out-of-field, or inexperienced teachers.	Effective Monitoring by Administration
3. Provide a general description of the Title I instructional program being implemented at this Title I school. Specifically define the subject areas to be addressed and the instructional strategies/methodologies to be employed to address the identified needs of the most academically at-risk students in the school. Please include services to be provided for students living in local institutions for neglected or delinquent children (if applicable).	Our focus will be the implementation of Teacher Clarity strategies and Specifically Designed Instruction (SDI), as well as continued support of PLCs and the MTSS process. Through Teacher Clarity professional learning, teachers learn how to explicitly communicate to students what they will be learning on a given day, why they're learning it, and how to know if they were successful. All teachers are provided with PLC professional learning in the form of either in-person trainings through Solution Tree conference/workshop presentations or redelivery of those presentations on staff development days. These conferences address issues such as collaboration, strengthening Tier I instruction through the use of research-based, data-driven strategies, and identifying students who need Tier II and III support. The Multi-Tiered System of Support (MTSS) team works with our PLCs to provide early intervention for those students identified as needing intensive behavior or academic support. All students, including at-risk students, can receive counseling, school-based mental health programs, specialized instructional support services and other strategies to improve students' skills outside the academic subject areas. External mental health services provided through Brave Tomorrow are available for students who need more consistent mental health counseling. This service provides on-campus counseling for students who need focused care for symptoms like depression and anxiety. This program benefits students by improving their school attendance and increasing classroom seat time, thus increasing their academic achievement.

<p>4. If applicable, provide a description of how teachers, in consultation with parents, administrators, and pupil services personnel, will identify eligible children most in need of services in Title I targeted assistance schools/programs. Please include a description of how the school will develop and implement multiple (a minimum of 2) objective, academic-based performance criteria to rank students for service. Also include a description of the measurable scale (point system) that uses the objective criteria to rank all students.</p>	<p>Students will be identified using MARS reports during monthly data meetings.</p>
---	---

3. REQUIRED QUESTIONS

3.2 PQ, Federally Identified Schools, CTAE, Discipline

Required Questions

5. If applicable, describe how the school will support, coordinate, and integrate services with early childhood programs at the school level, including strategies for assisting preschool children in the transition from early childhood education programs to local elementary school programs.	We have Early Childhood classes who work with our onsite Pre-K students. The media center addresses literacy growth with their weekly book readings and their Early Childhood Literature book selections.
6. If applicable, describe how the school will implement strategies to facilitate effective transitions for students from middle grades to high school and from high school to postsecondary education including: Coordination with institutions of higher education, employers, and local partners; and Increased student access to early college, high school, or dual or concurrent enrollment opportunities or career counseling to identify student interest and skills.	We have transition plans in place to address all of our students needs as they move forward, with middle school students visiting our campus each year. We participate in College/Career Expos and the Sophomore Discovery event at which students visit Ogeechee Technical College and local industries. Our seniors visit the Career Fair at OTC, and our juniors engage in job shadowing with local manufacturing industries. Our guidance department also hosts speakers from colleges and local industry during monthly lunchtime presentations who present information about available educational and. Students are assisted by our counselors and local higher education representatives with FAFSA and college applications.
7. Describe how the school will support efforts to reduce the overuse of discipline practices that remove students from the classroom, specifically addressing the effects on all subgroups of students.	Administration runs weekly reports and analyzes the data. Also, the MTSS team monitors teachers' use of restorative circles in their classrooms. Administrators provide support for teachers with classroom discipline issues, calling in the district's climate coaches as needed.

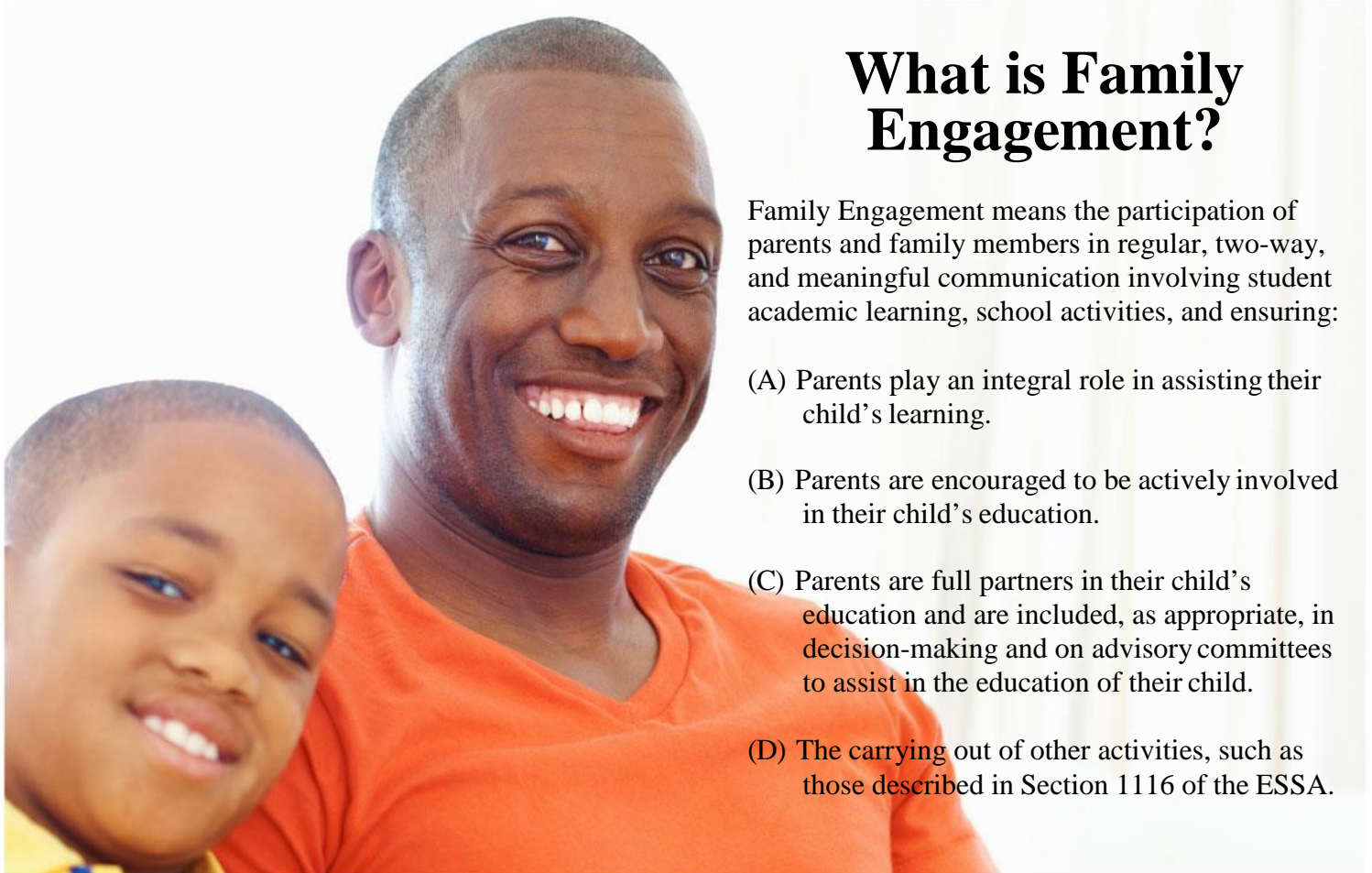
ADDITIONAL RESPONSES

8. Use the space below to provide additional narrative regarding the school's improvement plan.	
---	--

Bulloch County School District

Family Engagement Plan

2024-2025 School Year
Revised May 7, 2024
150 Williams Road, Suite A
Statesboro, GA 30458
www.bulloch.k12.ga.us



What is Family Engagement?

Family Engagement means the participation of parents and family members in regular, two-way, and meaningful communication involving student academic learning, school activities, and ensuring:

- (A) Parents play an integral role in assisting their child's learning.
- (B) Parents are encouraged to be actively involved in their child's education.
- (C) Parents are full partners in their child's education and are included, as appropriate, in decision-making and on advisory committees to assist in the education of their child.
- (D) The carrying out of other activities, such as those described in Section 1116 of the ESSA.

About the Family Engagement Plan

In support of strengthening student academic achievement, the Bulloch County Schools (BCS) has developed this Family Engagement Plan that establishes the district's expectations and objectives for meaningful family engagement and guides the strategies and resources that strengthen school and parent partnerships in the district's Title I schools. This plan describes BCS's commitment to engage families and build the capacity in its Title I schools to implement family engagement and to achieve academic achievement goals.

When schools, families, and communities work together to support learning, children tend to do better in school, stay in school longer and enjoy school more. Title I, Part A provides for substantive family engagement at every level of the program,

such as in the development and implementation of the district and school plan, and in carrying out the district and school improvement provisions. Section 1116 of the Every Student Succeeds Act (ESSA) contains the primary Title I, Part A requirements for schools and school systems to involve parents and family members in their children's education. Consistent with Section 1116, BCS will work with its Title I schools to ensure that the required school-level Family Engagement Plans meet the requirements of Section 1116(b) and each include, as a component, a school- parent compact consistent with Section 1116(d) of the ESSA.

Jointly Developed

Bulloch County Schools will take the following actions to involve parents and family members in jointly developing the district Family Engagement Plan under Section 1112, and the development of support and improvement plans under paragraphs (1) and (2) of Section 111 (d) of the ESSA:

- Distribute parent surveys to all parents of students enrolled in Title I schools to involve parents in the development of this plan and use of Family Engagement Plan funds.
- Provide parents access to the information in the district's Family Engagement Plan, the district's Comprehensive LEA Improvement Plan (CLIP), and the school's improvement plans, through the district website, and engage in dialogue about the plan during family engagement meetings, such as the following:
 - Annual Title I Public Meetings
 - Migrant Parent Advisory Committee Meetings
 - Open Houses
 - Parent Workshops/Family Events

Upon final revision, the district Family Engagement Plan will be incorporated into the CLIP which is submitted to the state. Parents are welcome to submit comments and feedback regarding the plan at any time on the school district website or by submitting written comments to their child's school.

The district Family Engagement Plan is posted on district and school websites, distributed during the annual Title I school meetings, and made available in the schools' parent resource centers.

Strengthening Our Schools

This year, the district will provide assistance and support to all Title I schools to ensure family engagement requirements are being satisfied and family engagement strategies and activities are being implemented. Title I schools will receive notifications and resources from the district to help them improve and strengthen family engagement. In addition to frequent communication and school visits, the district may hold monthly meetings and trainings with its Title I schools' principals and school Family Engagement Specialists to review family engagement plans and activities.

Additionally, the district Family Engagement Specialists will convene a meeting with the principal and key stakeholders at their respective schools in the spring of each year. The purpose of this meeting is to review Family Engagement Plan requirements and plan opportunities for family engagement activities and meetings for the remainder of the school year.

Reservation of Funds

BCS will reserve 1 percent from the total amount of Title I funds it receives in FY25 to carry out the Family Engagement Plan requirements listed in this plan and as described in Section 1116 of the ESSA. Furthermore, BCS will distribute 90 percent of the amount reserved to Title I schools to support their local-level family engagement programs and activities. The district will provide clear guidance and communication to assist each Title I school in developing an adequate family engagement budget that addresses their needs assessment and parent recommendations.

Each Title I school will hold a Parent Input meeting during the months of February or March, 2025 and a survey will be available during this time, seeking suggestions as to how these family engagement funds will be used in the upcoming year at the district and school-level. Feedback from these meetings and the survey results will be reviewed by the district to determine areas of need for the upcoming school year and consider changes to the family engagement budget.





Opportunities for Meaningful Parent Consultation

Input and suggestions from parents and family members are an essential component of the district and school improvement plans that are developed each year. All parents of students eligible to receive Title I services are invited to attend the two meeting opportunities described in this section to share their ideas and suggestions to help the district, schools, and students to reach our student academic achievement goals.

District Family Engagement Review Meeting ~ May, 2025

All parents are welcome to hear the latest updates from Bulloch County Schools as well as review and provide input into the district Family Engagement Plan and the Consolidated LEA Improvement Plan for the 2025-2026 school year. This meeting will be held in May, 2025. The district will communicate information regarding this meeting on the school district website and through social media.

Title I Parent Input Meetings ~February, March 2025

During this time, each Title I school will host a meeting for parents and family members to participate in discussions to review the schoolwide plan, the school's Family Engagement Plan, as well as provide input on the family engagement budget and programs. Each Title I school will send invitations home as well as email parents to notify them about the date and time of the meeting. Information regarding the Title I Family Input Meeting will also be made available on the school websites.

Parent input on the use of Title I funds to support family engagement programs may also be provided through the annual district survey available in February or March, 2025. The survey will contain questions related to the family engagement budget as well as a section for parents to provide their comments.

Unable to attend these meetings? Please visit www.bullochschoools.org/federalprograms to review the meeting documents and leave your input.

Building Capacity

Bulloch County Schools will build school and parent capacity for strong family engagement to ensure effective engagement of parents and family members in supporting partnerships among the Title I schools. Parents and the community share a goal of improving student academic achievement, and building capacity through districtwide activities and programs.

Parents - BCS will work through its Title I schools to provide assistance to parents in understanding state and district academic information connected to student learning and progress. The district will also provide parents with information regarding the Title I program. Programs for parents to gain knowledge about the challenging state academic standards, local academic assessments, as well as the required assessments for Georgia students, including alternative forms of assessment, will also be provided. The dates and locations for these programs will be posted on the district website and shared through each Title I school's website.

In addition, BCS will coordinate pages on the district and school websites that will contain resources and materials, including parent guides, study guides, practice assessments, to help parents work with their children at home. Copies of these materials will be made available at all Title I schools for those families who may have limited internet access, including copies in Spanish. To assist parents with understanding the online student information system and other digital educational resources (including education about the harms of copyright piracy), the family engagement specialists may host workshops for parents. The dates and times for these workshops will be determined and announced by each individual school and made available to parents.

BCS will coordinate and integrate the family engagement programs with the district's Pre-K programs and other federal and state funded preschool programs by inviting faculty and staff from those programs to attend planning meetings focused on family engagement activities. In the fall, the elementary schools will host Pre-Kindergarten Orientation so parents may tour the schools and receive information to help prepare them and their children for kindergarten. BCS will also coordinate with these programs to ensure that parents are informed about available resources.

School Staff - BCS will conduct two trainings per semester during the school year for all administrators, faculty and staff to learn and discuss strategies to increase family engagement, improve school-family communication, and build ties with parents and the community.

To ensure that information related to district, school, parent programs, and activities is available to all parents, each Title I school is required to send home and post online information for parents and family members in an understandable language and uniform format. At the beginning of the year, school staff will be trained on parent notifications and resources to be sent home in parents' native language, where applicable, and providing interpreters at parent events. Information posted on the district website will be translated to the extent practicable. The district will also utilize school phone call systems, district and school websites, local news media, and other school message systems to post information for parents.

Family Engagement Evaluation

Each year, BCS will conduct an evaluation of the content and effectiveness of the Family Engagement Plan and the family engagement activities to improve the academic quality of the Title I schools through an annual parent survey and the Parent Input meetings.

In February or March, 2025, each Title I school will email the survey link to parents so they may provide valuable feedback regarding the Family Engagement Plan activities and programs. These surveys will also be posted on the district and school websites for parents to

complete. In addition to the annual survey, each Title I school will host a Title I Parent Input Meeting to facilitate group discussions for parents of children eligible to receive Title I services so we may design strategies for more effective family engagement.

BCS will use the findings from the input meeting and the survey results to design strategies to improve effective family engagement, to remove possible barriers to parent participation, and to revise its Family Engagement Plan.

Accessibility

In carrying out the Family Engagement Plan requirements established by Section 1116 of the ESSA, the district family engagement coordinator will communicate and collaborate with the Office for Student Support Services to ensure full opportunities for participation of parents with limited English proficiency, parents with disabilities, and parents of migratory children including providing information and school reports in a language parents can understand. Residential facilities in the school attendance area are included in any parent involvement correspondence and activities as well.

Mark Your Calendars

Annual Parent Survey
February/March 2025

Title I Parent Input Meetings
February/March 2025

District Family Engagement
Review Meeting
Annual Public CLIP
May 2025
BCS Board Office

Adoption

This district Family Engagement Plan has been developed jointly and agreed upon with parents and family members of children participating in Title I, Part A programs as evidenced by the collaboration of parents, school, and district personnel.

This policy was adopted by Bulloch County Schools on May 14, 2024, and will be in effect for the 2024-2025 academic school year. The school district will distribute this policy in multiple ways to all parents of participating Title I, Part A children before or during the first week of fall semester.

