

LEA Name : Big Beaver Falls Area SD  
Address : 1503 8th Avenue  
Beaver Falls , PA 15010

County : Beaver  
AUN Number : 127041503  
LEA Type : SD

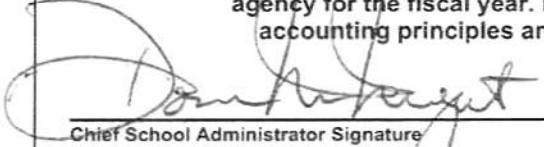
## Annual Financial Report Accuracy Certification Statement

For Fiscal Year Ending  
6/30/2018

Pennsylvania Department of Education  
&  
Office of Comptroller Operations

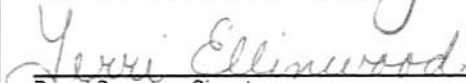
PDE-2056: Intermediate Unit  
PDE-2057: School District, AVTS/CTC, Charter School,  
and Special Program Jointure

**CERTIFICATION:** By signing this page I agree that the electronic data submitted is a complete and accurate statement of the financial operations and status of the local education agency for the fiscal year. It has been prepared in accordance with generally accepted accounting principles and established Commonwealth of PA reporting guidelines.

  
Chief School Administrator Signature

Date

10-25-18

  
Board Secretary Signature

Date

10-24-18

Gary Ceccarelli

Contact Person

ceccarellig@tigerweb.org

Contact Person E-mail Address

(724)843-3420

Ext :1203

Contact Person Telephone Number

(724)843-2360

Contact Person Fax Number

**Audit Certification**  
**Annual Financial Report:**  
For Fiscal Year Ending **6/30/2018**  
**(Pursuant to PA School Code Section 218(b))**

LEA Name : Big Beaver Falls Area SD  
AUN Number : 127041503  
County : Beaver

<b>Audit Certification Due:</b> 12/31/2018
---

This certification is applicable to the Annual Financial Report data submitted  
through the Consolidated Financial Reporting System on: \_\_\_\_\_  
Date

**Auditing Firm:**

**Auditor Contact Name:**

**Auditor Phone:**

**Auditor E-mail:**

CERTIFICATION: By signing this page I agree that the financial statements of the school have been properly audited as noted above pursuant to Article XXIV, and in the auditor's professional opinion, the Annual Financial Report (PDE-2057) submitted on the date referenced is materially consistent with the audited financial statements.

**Chief School Administrator**

**Board Secretary**

\_\_\_\_\_  
Signature

\_\_\_\_\_  
Date

\_\_\_\_\_  
Signature

\_\_\_\_\_  
Date

Gary Ceccarelli

\_\_\_\_\_  
Contact Person

ceccarellig@tigerweb.org

\_\_\_\_\_  
Contact Person E-mail Address

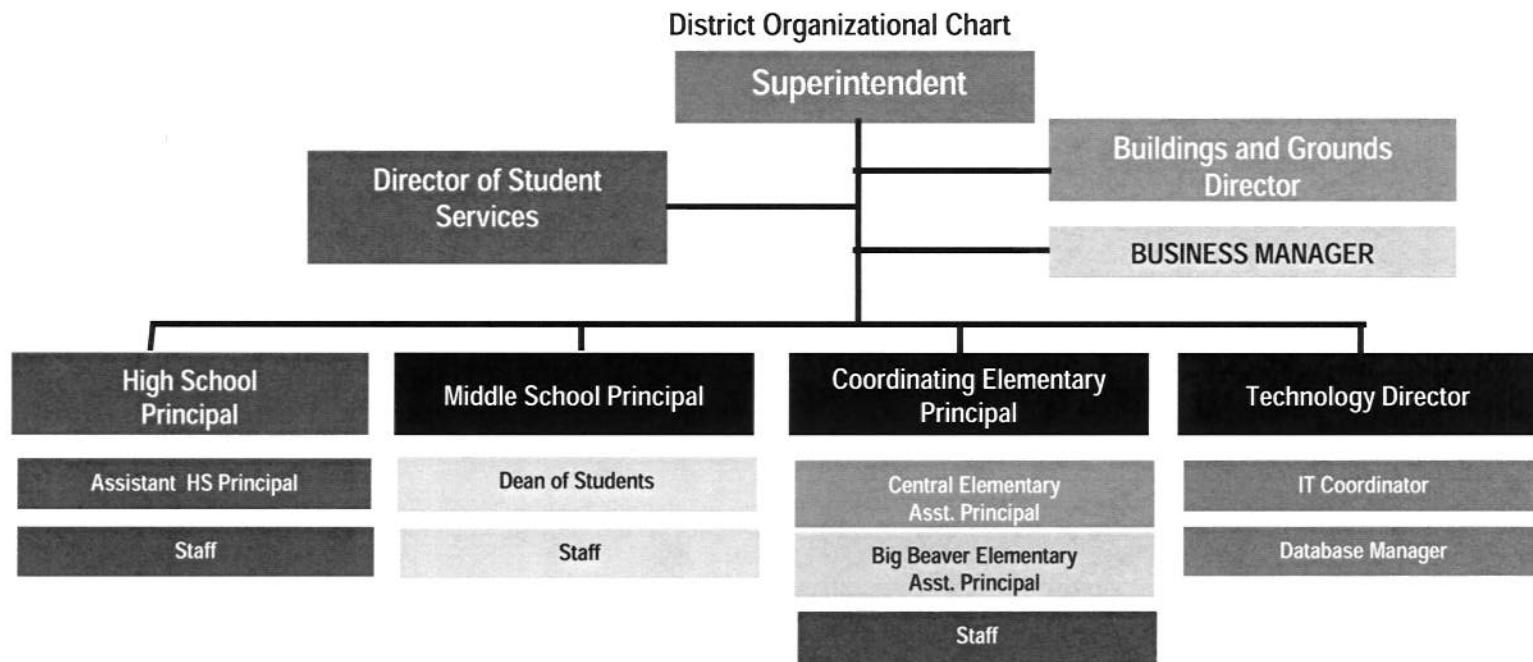
(724)843-3420

Ext :1203

\_\_\_\_\_  
Contact Person Telephone Number

(724)843-2360

\_\_\_\_\_  
Contact Person Fax Number



LEA : 127041503 Big Beaver Falls Area SD

Printed 10/25/2018 2:52:52 PM

Page - 1 of 1

<u>Val Number</u>	<u>Description</u>	<u>Justification</u>
30501	Revenue Detail: AFR amount must equal or exceed PDE FAI System amount.  7311, AFR Rev Detail: \$680,693.00 7311, PDE FAI System: \$840,798.45	Audit confirm on 9/4/18 total 7311: \$702,650.76 less 16/17 Acct Rec of 24,586.67 plus 17/18 deducts of 2,629.18 equals \$680,693.27



Amounts Expressed in Whole Dollars	<u>General Fund</u> (10)	<u>Public Purpose Trust</u> (27)	<u>Other Compt Approved</u> (28)	<u>Athletic / Activity</u> (29)	<u>Capital Reserve (690.</u> <u>1850)</u> (31)
<b>Assets And Deferred Outflows Of Resources</b>					
<b>Assets</b>					
0100 Cash and Cash Equivalents	6,722,060				
0110 Investments					
0120 Taxes Receivable	4,360,261				
0130 Due From Other Funds					
0141 Due From Other Governments	1,011,162				
0142 State Revenue Receivable					
0143 Federal Revenue Receivable					
0145 Other Intergovernmental Revenue Receivable					
0146 Due from Primary Government					
0147 Due from Component Unit					
0150 Other Receivables	119,730				
0170 Inventories					
0180 Prepaid Expenses (Expenditures)					
0190 Other Current Assets					
<b>Total Assets</b>	<b>\$12,213,213</b>				
0910 Deferred Outflows of Resources					
<b>Total Assets And Deferred Outflows Of Resources</b>	<b>\$12,213,213</b>				

LEA : 127041503 Big Beaver Falls Area SD

Printed 10/25/2018 2:52:12 PM

Page - 2 of 4

Amounts Expressed in Whole Dollars	<u>Capital Reserve (1431)</u> <u>(32)</u>	<u>Other Capital Projects</u> <u>Fund</u> <u>(39)</u>	<u>Debt Service</u> <u>(40)</u>	<u>Permanent</u> <u>(90)</u>	<u>Total Governmental</u> <u>Funds</u>
<b>Assets And Deferred Outflows Of Resources</b>					
<b>Assets</b>					
0100 Cash and Cash Equivalents					6,722,060
0110 Investments					
0120 Taxes Receivable					4,360,261
0130 Due From Other Funds					
0141 Due From Other Governments					1,011,162
0142 State Revenue Receivable					
0143 Federal Revenue Receivable					
0145 Other Intergovernmental Revenue Receivable					
0146 Due from Primary Government					
0147 Due from Component Unit					
0150 Other Receivables					119,730
0170 Inventories					
0180 Prepaid Expenses (Expenditures)					
0190 Other Current Assets					
<b>Total Assets</b>					<b>\$12,213,213</b>
0910 Deferred Outflows of Resources					
<b>Total Assets And Deferred Outflows Of Resources</b>					<b>\$12,213,213</b>

Amounts Expressed in Whole Dollars	<u>General Fund</u> (10)	<u>Public Purpose Trust</u> (27)	<u>Other Compt Approved</u> (28)	<u>Athletic / Activity</u> (29)	<u>Capital Reserve</u> (690) 1850 (31)
<b>Liabilities And Deferred Inflows Of Resources And Fund Balances</b>					
<b>Liabilities</b>					
0400 Due to Other Funds					
0411 Due to Other Governments					
0412 Due to Primary Government					
0413 Due to Component Unit					
0420 Accounts Payable	173,028				
0430 Contracts Payable					
0440 Current Portion of Long-Term Debt					
0450 Short-Term Payables					
0461 Accrued Salaries and Benefits	2,858,788				
0462 Payroll Deductions and Withholding					
0480 Unearned Revenues					
0490 Other Current Liabilities					
<b>Total Liabilities</b>	<b>\$3,031,816</b>				
0950 Deferred Inflows of Resources	4,146,464				
<b>Fund Balances</b>					
0810 Nonspendable Fund Balance					
0820 Restricted Fund Balance					
0830 Committed Fund Balance					
0840 Assigned Fund Balance	2,839,586				
0850 Unassigned Fund Balance	2,195,347				
<b>Total Fund Balances</b>	<b>\$5,034,933</b>				
<b>Total Liabilities, Deferred Inflows Of Resources And Fund Balances</b>	<b>\$12,213,213</b>				

LEA : 127041503 Big Beaver Falls Area SD

Printed 10/25/2018 2:52:12 PM

Page - 4 of 4

Amounts Expressed in Whole Dollars	<u>Capital Reserve (1431)</u> (32)	<u>Other Capital Projects</u> <u>Fund</u> (39)	<u>Debt Service</u> (40)	<u>Permanent</u> (90)	<u>Total Governmental</u> <u>Funds</u>
<b>Liabilities And Deferred Inflows Of Resources And Fund Balances</b>					
<b>Liabilities</b>					
0400 Due to Other Funds					
0411 Due to Other Governments					
0412 Due to Primary Government					
0413 Due to Component Unit					
0420 Accounts Payable					173,028
0430 Contracts Payable					
0440 Current Portion of Long-Term Debt					
0450 Short-Term Payables					
0461 Accrued Salaries and Benefits					2,858,788
0462 Payroll Deductions and Withholding					
0480 Unearned Revenues					
0490 Other Current Liabilities					
<b>Total Liabilities</b>					<b>\$3,031,816</b>
0950 Deferred Inflows of Resources					4,146,464
<b>Fund Balances</b>					
0810 Nonspendable Fund Balance					
0820 Restricted Fund Balance					
0830 Committed Fund Balance					
0840 Assigned Fund Balance					2,839,586
0850 Unassigned Fund Balance					2,195,347
<b>Total Fund Balances</b>					<b>\$5,034,933</b>
<b>Total Liabilities, Deferred Inflows Of Resources And Fund Balances</b>					<b>\$12,213,213</b>

Amounts Expressed in Whole Dollars	<u>General Fund</u> (10)	<u>Public Purpose Trust</u> (27)	<u>Other Compt Approved</u> (28)	<u>Athletic / Activity</u> (29)	<u>Capital Reserve (690)</u> <u>1850</u> (31)
<b>Revenues</b>					
6000 Revenue from Local Sources	8,433,034				
7000 Revenue from State Sources	18,333,057				
8000 Revenue from Federal Sources	1,490,277				
<b>Total Revenues</b>	<b>\$28,256,368</b>				
<b>Expenditures</b>					
1000 Instruction	16,697,472				
2000 Support Services	8,778,616				
3000 Operation of Non-Instructional Services	625,906				
4000 Facilities Acquisition, Construction and Improvement Services	265,842				
5110 Debt Service	1,835,229				
5130 Refund of Prior Year Revenues / Receipts	(9)				
<b>Total Expenditures</b>	<b>\$28,203,056</b>				
<b>Excess (Deficiency) Of Revenues Over Expenditures</b>	<b>\$53,312</b>				
<b>Other Financing Sources (Uses)</b>					
9110 Face Value of Bonds Issued					
9120 Proceeds from Refunding of Bonds					
9130 Bond Premiums					
9200 Proceeds from Extended-Term Financing					
9300 Interfund Transfers - IN	25,311				
9400 Sale of or Compensation for Loss of Fixed Assets					
9710 Transfers from Component Units					
9720 Transfers from Primary Governments					
9910 Other Financing Sources Not Listed in the 9000 Series					
9990 Insurance Recoveries					
5120 Debt Service – Refunded Bonds					
5150 Bond Discounts					
5200 Interfund Transfers – Out					
5300 Transfers Out to Component Units/Primary Governments					
<b>Total Other Financing Sources (Uses)</b>	<b>\$25,311</b>				

Amounts Expressed in Whole Dollars	<u>Capital Reserve (1431)</u> (32)	<u>Other Capital Projects</u> <u>Fund</u> (39)	<u>Debt Service</u> (40)	<u>Permanent</u> (90)	<u>Total Governmental</u> <u>Funds</u>
<b>Revenues</b>					
6000 Revenue from Local Sources					8,433,034
7000 Revenue from State Sources					18,333,057
8000 Revenue from Federal Sources					1,490,277
<b>Total Revenues</b>					<b>\$28,256,368</b>
<b>Expenditures</b>					
1000 Instruction					16,697,472
2000 Support Services					8,778,616
3000 Operation of Non-Instructional Services					625,906
4000 Facilities Acquisition, Construction and Improvement Services					265,842
5110 Debt Service					1,835,229
5130 Refund of Prior Year Revenues / Receipts					(9)
<b>Total Expenditures</b>					<b>\$28,203,056</b>
<b>Excess (Deficiency) Of Revenues Over Expenditures</b>					<b>\$53,312</b>
<b>Other Financing Sources (Uses)</b>					
9110 Face Value of Bonds Issued					
9120 Proceeds from Refunding of Bonds					
9130 Bond Premiums					
9200 Proceeds from Extended-Term Financing					
9300 Interfund Transfers - IN					25,311
9400 Sale of or Compensation for Loss of Fixed Assets					
9710 Transfers from Component Units					
9720 Transfers from Primary Governments					
9910 Other Financing Sources Not Listed in the 9000 Series					
9990 Insurance Recoveries					
5120 Debt Service – Refunded Bonds					
5150 Bond Discounts					
5200 Interfund Transfers – Out					
5300 Transfers Out to Component Units/Primary Governments					
<b>Total Other Financing Sources (Uses)</b>					<b>\$25,311</b>

Amounts Expressed in Whole Dollars		<u>General Fund</u> (10)	<u>Public Purpose Trust</u> (27)	<u>Other Compt Approved</u> (28)	<u>Athletic / Activity</u> (29)	<u>Capital Reserve (690.</u> <u>1850)</u> (31)
<b>Special And Extraordinary Items</b>						
9920	Special Items – Gains					
9930	Extraordinary Items – Gains					
5520	Special Items – Losses					
5530	Extraordinary Items – Losses					
<b>Net Change In Fund Balances</b>		<b>\$78,623</b>				
<b>Fund Balance</b>						
0001	Fund Balance - Beginning of Fiscal Year	4,956,312				
<b>Fund Balance - End Of Year</b>		<b>\$5,034,935</b>				

Amounts Expressed in Whole Dollars		<u>Capital Reserve (1431)</u>	<u>Other Capital Projects</u>	<u>Debt Service</u>	<u>Permanent</u>	<u>Total Governmental</u>
		(32)	Fund	(40)	(90)	Funds
			(39)			
<b>Special And Extraordinary Items</b>						
9920	Special Items – Gains					
9930	Extraordinary Items – Gains					
5520	Special Items – Losses					
5530	Extraordinary Items – Losses					
<b>Net Change In Fund Balances</b>						<b>\$78,623</b>
<b>Fund Balance</b>						
0001	Fund Balance - Beginning of Fiscal Year					4,956,312
<b>Fund Balance - End Of Year</b>						<b>\$5,034,935</b>



LEA : 127041503 Big Beaver Falls Area SD

Printed 10/25/2018 2:52:15 PM

Page - 1 of 2

Amounts Expressed in Whole Dollars	<u>Food Service</u> (51)	<u>Child Care</u> <u>Operations</u> (52)	<u>Other Enterprise</u> (58)	<u>TOTAL</u>	<u>Internal Service</u> (60)
<b>Assets And Deferred Outflows Of Resources</b>					
<b>Current Assets</b>					
0100 Cash and Cash Equivalents	294,342			294,342	
0110 Investments					
0130 Due From Other Funds					
0141 Due From Other Governments					
0142 State Revenue Receivable					
0143 Federal Revenue Receivable					
0146 Due from Primary Government					
0147 Due from Component Unit					
0150 Other Receivables	13,010			13,010	
0170 Inventories	23,689			23,689	
0180 Prepaid Expenses (Expenditures)					
0190 Other Current Assets					
<b>Total Current Assets</b>	<b>\$331,041</b>			<b>\$331,041</b>	
<b>Noncurrent Assets</b>					
0211 Land					
0212 Site Improvements (Net)					
0220 Buildings and Building Improvements (Net)					
0230 Machinery, Equipment and Furniture (Net)	27,614			27,614	
0250 Construction in Progress					
0260 Long Term Prepayments					
0290 Other Noncurrent Assets					
<b>Total Noncurrent Assets</b>	<b>\$27,614</b>			<b>\$27,614</b>	
0910 Deferred Outflows of Resources	200,832			200,832	
<b>Total Assets And Deferred Outflows Of Resources</b>	<b>\$559,487</b>			<b>\$559,487</b>	

Amounts Expressed in Whole Dollars	<u>Food Service</u> (51)	<u>Child Care</u> <u>Operations</u> (52)	<u>Other Enterprise</u> (58)	<u>TOTAL</u>	<u>Internal Service</u> (60)
<b>Liabilities And Deferred Inflows Of Resources And Net Position</b>					
<b>Current Liabilities</b>					
0400 Due to Other Funds					
0411 Due to Other Governments					
0413 Due to Component Unit					
0420 Accounts Payable					
0430 Contracts Payable					
0440 Current Portion of Long-Term Debt					
0450 Short-Term Payables					
0461 Accrued Salaries and Benefits					
0462 Payroll Deductions and Withholding					
0480 Unearned Revenues					
0490 Other Current Liabilities					
<b>Total Current Liabilities</b>					
<b>Noncurrent Liabilities</b>					
0510 Bonds Payable					
0520 Extended-Term Financing Agreements Payable					
0530 Lease-Purchase Obligations					
0540 Accumulated Compensated Absences	19,015			19,015	
0550 Authority Lease Obligations					
0560 Other Post-Employment Benefits (OPEB)					
0570 Net Pension Liability	1,215,699			1,215,699	
0599 Other Noncurrent Liabilities					
<b>Total Noncurrent Liabilities</b>	<b>\$1,234,714</b>			<b>\$1,234,714</b>	
<b>Total Liabilities</b>	<b>\$1,234,714</b>			<b>\$1,234,714</b>	
0950 Deferred Inflows of Resources	27,897			27,897	
<b>Net Position</b>					
0791 Net Investment in Capital Assets	27,614			27,614	
0008 Restricted Net Position (0792 – 0798)					
0799 Unrestricted Net Position	(730,738)			(730,738)	
<b>Total Net Position</b>	<b>(\$703,124)</b>			<b>(\$703,124)</b>	
<b>Total Liabilities And Deferred Inflows Of Resources And Net Position</b>	<b>\$559,487</b>			<b>\$559,487</b>	

Amounts Expressed in Whole Dollars	<u>Food Service</u> (51)	<u>Child Care Operations</u> (52)	<u>Other Enterprise</u> (58)	<u>TOTAL</u>	<u>Internal Service</u> (60)
<b>Operating Revenues</b>					
6600 Food Service Revenue	266,963			266,963	
0071 Charges for Services					
0072 Other Operating Revenue					
<b>Total Operating Revenues</b>	<b>\$266,963</b>			<b>\$266,963</b>	
<b>Operating Expenses</b>					
100 Personnel Services – Salaries	368,023			368,023	
200 Personnel Services – Employee Benefits	168,248			168,248	
300 Purchased Professional and Technical Services					
400 Purchased Property Services	18,211			18,211	
500 Other Purchased Services	705,595			705,595	
600 Supplies	97,428			97,428	
740 Depreciation	9,878			9,878	
810 Dues and Fees					
890 Miscellaneous Expenditures	1,972			1,972	
<b>Total Operating Expenses</b>	<b>\$1,369,355</b>			<b>\$1,369,355</b>	
<b>Operating Income (Loss)</b>	<b>(\$1,102,392)</b>			<b>(\$1,102,392)</b>	
<b>Non Operating Revenues (Expenses)</b>					
6500 Earnings on Investments	7,556			7,556	
6920 Contributions and Donations from Private Sources					
6930 Gains or Losses on Sale of Fixed Assets					
6991 Refunds of a Prior Year Expenditure					
7000 Revenue from State Sources	118,037			118,037	
8000 Revenue from Federal Sources	1,237,476			1,237,476	
820 Claims and Judgments Against the LEA					
830 Interest					
<b>TOTAL Non Operating Revenues (Expenses)</b>	<b>\$1,363,069</b>			<b>\$1,363,069</b>	
<b>Income (Loss) Before Contributions And Transfers</b>	<b>\$260,677</b>			<b>\$260,677</b>	

Amounts Expressed in Whole Dollars	<u>Food Service</u> (51)	<u>Child Care Operations</u> (52)	<u>Other Enterprise</u> (58)	<u>TOTAL</u>	<u>Internal Service</u> (60)
<b>Contributions, Transfers, and Special and Extraordinary Items</b>					
5200 Interfund Transfers – Out	25,311			25,311	
5300 Transfers Out to Component Units/Primary Governments					
5520 Special Items – Losses					
5530 Extraordinary Items – Losses					
9300 Interfund Transfers - IN					
9500 Capital Contributions					
9700 Transfers IN From Component Units/Primary Governments					
9920 Special Items – Gains					
9930 Extraordinary Items – Gains					
<b>Change In Net Position</b>	<b>\$235,366</b>			<b>\$235,366</b>	
0002 Net Position - Beginning of Fiscal Year	(938,490)			(938,490)	
0003 Accounting Changes / Residual Equity Transfers					
<b>Net Position - End Of Year</b>	<b>(\$703,124)</b>			<b>(\$703,124)</b>	

LEA : 127041503 Big Beaver Falls Area SD

Printed 10/25/2018 2:52:18 PM

Page - 1 of 4

Amounts Expressed in Whole Dollars	<u>Food Service</u> (51)	<u>Child Care Operations</u> (52)	<u>Other Enterprise</u> (58)	<u>TOTAL</u>	<u>Internal Service(60)</u>
<b>Cash Flows From Operating Activities</b>					
0011 Cash Receipts From Users	276,714			276,714	
0012 Cash Receipts From Assessments Made to Other Funds					
0013 Cash Receipts From Earnings on Investments					
0014 Cash Receipts From Other Operating Revenue					
0015 Cash Payments To Employees For Services	729,078			729,078	
0016 Cash Payments For Insurance Claims					
0017 Cash Payments To Suppliers For Goods and Services	821,217			821,217	
0018 Cash Payments For Other Operating Expenses	1,972			1,972	
<b>Net Cash Provided By (Used For) Operating Activities</b>	<b>(\$1,275,553)</b>			<b>(\$1,275,553)</b>	
<b>Cash Flows From Non-Capital Financing Activities</b>					
0021 Receipts From Local Sources - 6000					
0022 Receipts From State Sources - 7000	118,037			118,037	
0023 Receipts From Federal Sources -8000	1,237,476			1,237,476	
0024 Notes and Loans Received (Repaid)					
0025 Interest Paid on Notes/Loans - 5100-830					
0026 Operating Transfers In (Out)/Residual Equity Trans					
0027 Operating Transfers In (Out) Primary Government / Comp Unit	(25,311)			(25,311)	
0028 Receipts From Refund of Prior Year Expenditures - 6991					
0029 Special and Extraordinary Gains (losses)					
0030 Receipts from Insurance Recoveries -9990					
<b>Net Cash Prov By (Used for) Non-Capital Financing Activities</b>	<b>\$1,330,202</b>			<b>\$1,330,202</b>	
<b>Cash Flows From Capital and Related Financing Activities</b>					
0031 Payments For Fac Acq, Const, and Imp - 4000					
0032 Gain / (Loss) on Sale of Fixed Assets - 6930					
0033 Proceeds From Extended Term Financing - 9200					
0034 Principal Paid on Financing Agreements					
0035 Interest Paid on Financing Agreements - 5100-830					
0036 (Inc) Dec in Contributed Capital					
<b>Net Cash Prov By (Used for) Capital and Related Financing Activities</b>					
<b>Cash Flows From Investing Activities</b>					
0041 Earnings on Investments - 6500	7,556			7,556	
0042 Purchase of Inv Securities / Deposits to Inv Pools					
0043 Receipts From Investment Pool Withdrawals					
0044 Proceeds from Sale and Maturity of Inv Securities					

LEA : 127041503 Big Beaver Falls Area SD

Printed 10/25/2018 2:52:18 PM

Page - 2 of 4

0045 Loans Received (Paid)

<b>Net Cash Prov By (Used for) Investing Activities</b>	<b>\$7,556</b>	<b>\$7,556</b>
---	----------------	----------------

LEA : 127041503 Big Beaver Falls Area SD

Printed 10/25/2018 2:52:18 PM

Page - 3 of 4

	<u>Food Service</u> (51)	<u>Child Care Operations</u> (52)	<u>Other Enterprise</u> (58)	<u>TOTAL</u>	<u>Internal Service</u> (60)
<b>Net Increase (Decrease) in Cash Flows</b>	<b>62,205</b>			<b>62,205</b>	
0004 Cash and Cash Equivalents Beginning of Year	232,137			232,137	
<b>Cash and Cash Equivalents at Year End</b>	<b>\$294,342</b>			<b>\$294,342</b>	
<hr/>					
<b>Reconciliation of Operating Income (Loss) To Net Cash Provided by (Used For) Operating Activities</b>					
0005 Operating Income (Loss) per REP	(1,102,392)			(1,102,392)	
<b>Adjustments</b>					
0051 Depreciation and Net Amortization	9,878			9,878	
0052 Provision for Uncollectible Accounts					
0053 Other Adjustments					
<b>Effect of Changes in Assets, Liabilities, Deferred Outflows and Deferred Inflows</b>					
0054 (Inc) Dec In Accounts Receivable (0120-0150)	9,751			9,751	
0055 Advances to Other Funds (0160)					
0056 (Inc) Dec in Inventories (0170)	17			17	
0057 (Inc) Dec in Prepaid Expenses (0180)					
0058 (Inc) Dec in Other Current or Noncurrent Assets					
0064 Deferred Outflows (0910)	50,679			50,679	
0059 Inc (Dec) in Accounts Payable (0400-0450)	(170,958)			(170,958)	
0060 Inc (Dec) in Accrued Salaries/Benefits (0461)					
0065 Inc (Dec) in Net Pension Liabilities (0570)	(90,080)			(90,080)	
0066 Inc (Dec) in Other Postemp Benefit Oblig (0560)					
0061 Inc (Dec) in Payroll Deductions/Withholding (0462)					
0062 Inc (Dec) in Unearned Revenue (0480)					
0063 Inc (Dec) in Other Current or Noncurrent Liabilities	520			520	
0067 Deferred Inflows (0950)	17,032			17,032	
<b>Total Adjustments</b>	<b>(\$173,161)</b>			<b>(\$173,161)</b>	
<b>Cash Provided By (Used for) Total</b>	<b>(\$1,275,553)</b>			<b>(\$1,275,553)</b>	

**COMBINED STATEMENT OF CASH FLOWS**  
**SCHEDULE OF NONCASH INVESTING, CAPITAL, AND FINANCING ACTIVITIES**

Explanation of Transaction and Balance Sheet Effect	Amount
<b>Total</b>	



LEA : 127041503 Big Beaver Falls Area SD

Printed 10/25/2018 2:52:19 PM

Page - 1 of 4

Amounts Expressed in Whole Dollars	<u>Private Purpose Trust</u> (71)	<u>Investment Trust</u> (72)	<u>Pension Trust</u> (73)	<u>Activity</u> (81)
<b>Assets And Deferred Outflows Of Resources</b>				
<b>Assets</b>				
0100 Cash and Cash Equivalents	55,861			
0110 Investments				
0130 Due From Other Funds				
0147 Due from Component Unit				
0150 Other Receivables				
0170 Inventories				
0180 Prepaid Expenses (Expenditures)				
0190 Other Current Assets				
0220 Buildings and Building Improvements (Net)				
0230 Machinery, Equipment and Furniture (Net)				
<b>Total Assets</b>	<b>\$55,861</b>			
0910 Deferred Outflows of Resources				
<b>Total Assets And Deferred Outflows Of Resources</b>	<b>\$55,861</b>			

LEA : 127041503 Big Beaver Falls Area SD

Printed 10/25/2018 2:52:19 PM

Page - 2 of 4

Amounts Expressed in Whole Dollars	<u>Other Agency</u> (89)	<u>Discrete Component Units</u> (98)	<u>Discrete Component Units</u> (99)	<u>Total Fiduciary Funds</u>
<b>Assets And Deferred Outflows Of Resources</b>				
<b>Assets</b>				
0100 Cash and Cash Equivalents				55,861
0110 Investments				
0130 Due From Other Funds				
0147 Due from Component Unit				
0150 Other Receivables				
0170 Inventories				
0180 Prepaid Expenses (Expenditures)				
0190 Other Current Assets				
0220 Buildings and Building Improvements (Net)				
0230 Machinery, Equipment and Furniture (Net)				
<b>Total Assets</b>				<b>\$55,861</b>
0910 Deferred Outflows of Resources				
<b>Total Assets And Deferred Outflows Of Resources</b>				<b>\$55,861</b>

LEA : 127041503 Big Beaver Falls Area SD

Printed 10/25/2018 2:52:19 PM

Page - 3 of 4

Amounts Expressed in Whole Dollars	<u>Private Purpose Trust</u> (71)	<u>Investment Trust</u> (72)	<u>Pension Trust</u> (73)	<u>Activity</u> (81)
<b>Liabilities, Deferred Inflows Of Resources And Net Position</b>				
<b>Liabilities</b>				
0400 Due to Other Funds				
0411 Due to Other Governments				
0412 Due to Primary Government				
0413 Due to Component Unit				
0420 Accounts Payable				
0430 Contracts Payable				
0450 Short-Term Payables				
0461 Accrued Salaries and Benefits				
0462 Payroll Deductions and Withholding				
0480 Unearned Revenues				
0490 Other Current Liabilities	55,861			
<b>Total Liabilities</b>	<b>\$55,861</b>			
0950 Deferred Inflows of Resources				
<b>Net Position</b>				
0791 Net Investment in Capital Assets				
0009 Restricted Net Position (0792 – 0798)				
0799 Unrestricted Net Position				
<b>Total Net Position</b>				
<b>Total Liabilities, Deferred Inflows Of Resources And Net Position</b>	<b>\$55,861</b>			

LEA : 127041503 Big Beaver Falls Area SD

Printed 10/25/2018 2:52:19 PM

Page - 4 of 4

Amounts Expressed in Whole Dollars	<u>Other Agency</u> (89)	<u>Discrete Component Units</u> (98)	<u>Discrete Component Units</u> (99)	<u>Total Fiduciary Funds</u>
<b>Liabilities, Deferred Inflows Of Resources And Net Position</b>				
<b>Liabilities</b>				
0400 Due to Other Funds				
0411 Due to Other Governments				
0412 Due to Primary Government				
0413 Due to Component Unit				
0420 Accounts Payable				
0430 Contracts Payable				
0450 Short-Term Payables				
0461 Accrued Salaries and Benefits				
0462 Payroll Deductions and Withholding				
0480 Unearned Revenues				
0490 Other Current Liabilities				55,861
<b>Total Liabilities</b>				<b>\$55,861</b>
0950 Deferred Inflows of Resources				
<b>Net Position</b>				
0791 Net Investment in Capital Assets				
0009 Restricted Net Position (0792 – 0798)				
0799 Unrestricted Net Position				
<b>Total Net Position</b>				
<b>Total Liabilities, Deferred Inflows Of Resources And Net Position</b>				<b>\$55,861</b>

	Revenue Reported In Current Year	Current Year Tax Accrual	Prior Year Tax Accrual	Taxes Collected In Current Year
<b><u>Revenue from Local Sources</u></b>				
6111 Current Real Estate Taxes	5,924,990.00			5,924,990.00
6114 Payments in Lieu of Current Taxes - State / Local	97,529.00			97,529.00
6120 Current Per Capita Taxes, Section 679	20,327.00			20,327.00
6141 Current Act 511 Per Capita Taxes	20,327.00			20,327.00
6143 Current Act 511 Local Services Taxes	22,795.00			22,795.00
6146 Current Act 511 Mechanical Device Taxes - Flat Rate	4,763.00			4,763.00
6151 Current Act 511 Earned Income Taxes	952,206.00			952,206.00
6153 Current Act 511 Real Estate Transfer Taxes	106,456.00			106,456.00
6157 Current Act 511 Mercantile Taxes	119,689.00			119,689.00
6412 Delinquent Interim Real Estate Taxes	721,383.00			721,383.00
6451 Delinquent Act 511 Earned Income Taxes	18,833.00			18,833.00
6500 Earnings on Investments	77,282.00			
6700 Revenues from LEA Activities	25,290.00			
6832 Federal IDEA Revenue Received as Pass Through	250,401.00			
6910 Rentals	26,869.00			
6941 Regular Day School Tuition	2,143.00			
6991 Refunds of a Prior Year Expenditure	4,197.00			
6999 Other Revenues Not Specified Above	37,554.00			
<b>TOTAL Revenue from Local Sources</b>	<b>\$8,433,034.00</b>			<b>\$8,009,298.00</b>

	Revenue Reported In Current Year
<b><u>Revenue from State Sources</u></b>	
7110 Basic Education Funding	10,893,296.00
7160 Tuition for Orphans Subsidy	57,980.00
7240 Driver Education - Student	770.00
7271 Special Education funds for School-Aged Pupils	1,364,416.00
7292 Pre-K Counts	306,000.00
7311 Pupil Transportation Subsidy	680,693.00
7312 Nonpublic and Charter School Pupil Transportation Subsidy	56,980.00
7320 Rental and Sinking Fund Payments / Building Reimbursement Subsidy	384,607.00
7330 Health Services (Medical, Dental, Nurse, Act 25)	34,345.00
7340 State Property Tax Reduction Allocation	995,552.00
7360 Safe Schools	60,000.00
7505 Ready to Learn Block Grant	384,341.00
7810 State Share of Social Security and Medicare Taxes	546,138.00
7820 State Share of Retirement Contributions	2,567,939.00
<b>TOTAL Revenue from State Sources</b>	<b>\$18,333,057.00</b>

	Revenue Reported In Current Year
<b><u>Revenue from Federal Sources</u></b>	
8110 Payments for Federally Impacted Areas	14,820.00
8514 NCLB, Title I - Improving the Academic Achievement of the Disadvantaged	1,132,037.00
8515 NCLB, Title II - Preparing, Training and Recruiting High Quality Teachers and Principals	126,792.00
8517 NCLB, Title IV - 21st Century Schools	25,931.00
8732 ARRA - Qualified School Construction Bonds (QSCB)	73,775.00
8810 School-Based Access Medicaid Reimbursement Program (SBAP) Reimbursements (Access)	93,725.00
8820 Medical Assistance Reimbursement for Administrative Claiming (Quarterly) Program	23,197.00
<b>TOTAL Revenue from Federal Sources</b>	<b>\$1,490,277.00</b>

	Revenue Reported In Current Year	
<u>Other Financing Sources</u>		
9330 Capital Projects Fund Transfers	25,311.00	
<b>TOTAL Other Financing Sources</b>	<b>\$25,311.00</b>	
<b>TOTAL FROM ALL SOURCES</b>	<b>\$28,281,679.00</b>	<b>\$8,009,298.00</b>



Revenue from Local Sources	8,433,034.00
Revenue from State Sources	18,333,057.00
Revenue from Federal Sources	1,490,277.00
Other Financing Sources	25,311.00
<b>TOTAL FROM ALL SOURCES</b>	<b>\$28,281,679.00</b>

LEA : 127041503 Big Beaver Falls Area SD

Printed 10/25/2018 2:52:23 PM

Page - 1 of 27

**General Fund (10)****1000 Instruction****Total****100 Personnel Services – Salaries**

100 Personnel Services – Salaries

8,034,387.00

**Total Personnel Services – Salaries****\$8,034,387.00****200 Personnel Services – Employee Benefits**

210 Group Insurance – Contracted Provider

1,872,746.00

220 Social Security Contributions

610,600.00

230 PSERS Retirement Contributions

2,571,445.00

260 Workers' Compensation

106,020.00

270 Group Insurance – Self-Insurance

87,725.00

299 All Other Employee Benefits

43,008.00

**Total Personnel Services – Employee Benefits****\$5,291,544.00****300 Purchased Professional and Technical Services**

322 Professional Educational Services – Ius

679,449.00

323 Professional Educational Services – Other Educational Agencies

44,056.00

330 Other Professional Services

155,597.00

340 Technical Services

(600.00)

**Total Purchased Professional and Technical Services****\$878,502.00****400 Purchased Property Services**

430 Repairs and Maintenance Services

1,506.00

**Total Purchased Property Services****\$1,506.00****500 Other Purchased Services**

510 Student Transportation Services

8,104.00

561 Tuition To Other School Districts Within the State

152,662.00

562 Tuition To Pennsylvania Charter Schools

1,039,570.00

563 Tuition To Nonpublic Schools

373,447.00

564 Tuition To Career and Technology Centers

274,578.00

567 Tuition To Approved Private Schools (APS) and PA Chartered Schools for the Deaf and Blind

167,686.00

568 Tuition To Private Residential Rehabilitative Institutions (PRRI) [In-State] and Detention Centers

26,423.00

580 Travel

3,548.00

594 IU Payment By Withholding for Institutionalized Children's Programs – Special Classes

1,018.00

597 Direct Payments To Intermediate Units for Institutionalized Childrens' Program

153,213.00

**Total Other Purchased Services****\$2,200,249.00****600 Supplies**

610 General Supplies

288,217.00

620 Energy

384.00

**Total Supplies****\$288,601.00****800 Other Objects**

810 Dues and Fees

2,683.00

**Total Other Objects****\$2,683.00****Total 1000 Instruction****\$16,697,472.00**

LEA : 127041503 Big Beaver Falls Area SD

Printed 10/25/2018 2:52:23 PM

Page - 2 of 27

## General Fund (10)

## 1100 Regular Programs – Elementary / Secondary

	<u>Elementary</u>	<u>Secondary</u>	<u>Federal</u>	<u>Total</u>
<b>100 Personnel Services – Salaries</b>				
100 Personnel Services – Salaries	3,275,909.00	2,300,243.00	621,040.00	6,197,192.00
<b>Total Personnel Services – Salaries</b>	<b>\$3,275,909.00</b>	<b>\$2,300,243.00</b>	<b>\$621,040.00</b>	<b>\$6,197,192.00</b>
<b>200 Personnel Services – Employee Benefits</b>				
210 Group Insurance – Contracted Provider	711,775.00	615,391.00	143,829.00	1,470,995.00
220 Social Security Contributions	248,790.00	174,682.00	47,337.00	470,809.00
230 PSERS Retirement Contributions	1,042,170.00	741,544.00	201,458.00	1,985,172.00
260 Workers' Compensation	57,011.00	32,779.00		89,790.00
270 Group Insurance – Self-Insurance	32,829.00	27,071.00		59,900.00
299 All Other Employee Benefits	21,504.00	21,504.00		43,008.00
<b>Total Personnel Services – Employee Benefits</b>	<b>\$2,114,079.00</b>	<b>\$1,612,971.00</b>	<b>\$392,624.00</b>	<b>\$4,119,674.00</b>
<b>400 Purchased Property Services</b>				
430 Repairs and Maintenance Services		1,506.00		1,506.00
<b>Total Purchased Property Services</b>		<b>\$1,506.00</b>		<b>\$1,506.00</b>
<b>500 Other Purchased Services</b>				
561 Tuition To Other School Districts Within the State		124,237.00		124,237.00
562 Tuition To Pennsylvania Charter Schools	2,629.00	1,036,941.00		1,039,570.00
568 Tuition To Private Residential Rehabilitative Institutions (PRRI) [In-State] and Detention Centers	13,212.00	13,211.00		26,423.00
580 Travel	665.00	1,075.00		1,740.00
<b>Total Other Purchased Services</b>	<b>\$16,506.00</b>	<b>\$1,175,464.00</b>		<b>\$1,191,970.00</b>
<b>600 Supplies</b>				
610 General Supplies	30,908.00	59,849.00	75,678.00	166,435.00
<b>Total Supplies</b>	<b>\$30,908.00</b>	<b>\$59,849.00</b>	<b>\$75,678.00</b>	<b>\$166,435.00</b>
<b>800 Other Objects</b>				
810 Dues and Fees	738.00	3,131.00		3,869.00
<b>Total Other Objects</b>	<b>\$738.00</b>	<b>\$3,131.00</b>		<b>\$3,869.00</b>
<b>Total 1100 Regular Programs – Elementary / Secondary</b>	<b>\$5,438,140.00</b>	<b>\$5,153,164.00</b>	<b>\$1,089,342.00</b>	<b>\$11,680,646.00</b>

LEA : 127041503 Big Beaver Falls Area SD

Printed 10/25/2018 2:52:23 PM

Page - 3 of 27

## General Fund (10)

## 1110 Regular Programs

	<u>Elementary</u>	<u>Secondary</u>	<u>Federal</u>	<u>Total</u>
<b>100 <u>Personnel Services – Salaries</u></b>				
100 Personnel Services – Salaries	3,275,909.00	2,300,243.00	133,556.00	5,709,708.00
<b>Total Personnel Services – Salaries</b>	<b>\$3,275,909.00</b>	<b>\$2,300,243.00</b>	<b>\$133,556.00</b>	<b>\$5,709,708.00</b>
<b>200 <u>Personnel Services – Employee Benefits</u></b>				
210 Group Insurance – Contracted Provider	711,775.00	615,391.00	38,949.00	1,366,115.00
220 Social Security Contributions	248,790.00	174,682.00	10,138.00	433,610.00
230 PSERS Retirement Contributions	1,042,170.00	741,544.00	43,499.00	1,827,213.00
260 Workers' Compensation	57,011.00	32,779.00		89,790.00
270 Group Insurance – Self-Insurance	32,829.00	27,071.00		59,900.00
299 All Other Employee Benefits	21,504.00	21,504.00		43,008.00
<b>Total Personnel Services – Employee Benefits</b>	<b>\$2,114,079.00</b>	<b>\$1,612,971.00</b>	<b>\$92,586.00</b>	<b>\$3,819,636.00</b>
<b>400 <u>Purchased Property Services</u></b>				
430 Repairs and Maintenance Services		1,506.00		1,506.00
<b>Total Purchased Property Services</b>		<b>\$1,506.00</b>		<b>\$1,506.00</b>
<b>500 <u>Other Purchased Services</u></b>				
561 Tuition To Other School Districts Within the State		124,237.00		124,237.00
562 Tuition To Pennsylvania Charter Schools	2,629.00	1,036,941.00		1,039,570.00
568 Tuition To Private Residential Rehabilitative Institutions (PRRI) [In-State] and Detention Centers	13,212.00	13,211.00		26,423.00
580 Travel	665.00	1,075.00		1,740.00
<b>Total Other Purchased Services</b>	<b>\$16,506.00</b>	<b>\$1,175,464.00</b>		<b>\$1,191,970.00</b>
<b>600 <u>Supplies</u></b>				
610 General Supplies	30,908.00	59,849.00	34,565.00	125,322.00
<b>Total Supplies</b>	<b>\$30,908.00</b>	<b>\$59,849.00</b>	<b>\$34,565.00</b>	<b>\$125,322.00</b>
<b>800 <u>Other Objects</u></b>				
810 Dues and Fees	738.00	3,131.00		3,869.00
<b>Total Other Objects</b>	<b>\$738.00</b>	<b>\$3,131.00</b>		<b>\$3,869.00</b>
<b>Total 1110 Regular Programs</b>	<b>\$5,438,140.00</b>	<b>\$5,153,164.00</b>	<b>\$260,707.00</b>	<b>\$10,852,011.00</b>

LEA : 127041503 Big Beaver Falls Area SD

Printed 10/25/2018 2:52:23 PM

Page - 4 of 27

## General Fund (10)

	<u>Elementary</u>	<u>Secondary</u>	<u>Federal</u>	<u>Total</u>
<b>1190 Federally-Funded Regular Programs</b>				
<b>100 <u>Personnel Services – Salaries</u></b>				
100 Personnel Services – Salaries			487,484.00	487,484.00
<b>Total Personnel Services – Salaries</b>			<b>\$487,484.00</b>	<b>\$487,484.00</b>
<b>200 <u>Personnel Services – Employee Benefits</u></b>				
210 Group Insurance – Contracted Provider			104,880.00	104,880.00
220 Social Security Contributions			37,199.00	37,199.00
230 PSERS Retirement Contributions			157,959.00	157,959.00
<b>Total Personnel Services – Employee Benefits</b>			<b>\$300,038.00</b>	<b>\$300,038.00</b>
<b>600 <u>Supplies</u></b>				
610 General Supplies			41,113.00	41,113.00
<b>Total Supplies</b>			<b>\$41,113.00</b>	<b>\$41,113.00</b>
<b>Total 1190 Federally-Funded Regular Programs</b>			<b>\$828,635.00</b>	<b>\$828,635.00</b>

LEA : 127041503 Big Beaver Falls Area SD

Printed 10/25/2018 2:52:23 PM

Page - 5 of 27

## General Fund (10)

1200 Special Programs – Elementary / Secondary	<u>Elementary</u>	<u>Secondary</u>	<u>Federal</u>	<u>Total</u>
<b>100 Personnel Services – Salaries</b>				
100 Personnel Services – Salaries	835,281.00	419,430.00		1,254,711.00
<b>Total Personnel Services – Salaries</b>	<b>\$835,281.00</b>	<b>\$419,430.00</b>		<b>\$1,254,711.00</b>
<b>200 Personnel Services – Employee Benefits</b>				
210 Group Insurance – Contracted Provider	188,819.00	134,799.00		323,618.00
220 Social Security Contributions	63,586.00	31,610.00		95,196.00
230 PSERS Retirement Contributions	274,328.00	135,393.00		409,721.00
260 Workers' Compensation	6,524.00	7,505.00		14,029.00
270 Group Insurance – Self-Insurance	13,538.00	10,537.00		24,075.00
<b>Total Personnel Services – Employee Benefits</b>	<b>\$546,795.00</b>	<b>\$319,844.00</b>		<b>\$866,639.00</b>
<b>300 Purchased Professional and Technical Services</b>				
322 Professional Educational Services – Ius	614,877.00		64,572.00	679,449.00
323 Professional Educational Services – Other Educational Agencies			44,056.00	44,056.00
330 Other Professional Services	118,607.00			118,607.00
<b>Total Purchased Professional and Technical Services</b>	<b>\$733,484.00</b>		<b>\$108,628.00</b>	<b>\$842,112.00</b>
<b>500 Other Purchased Services</b>				
510 Student Transportation Services		8,104.00		8,104.00
563 Tuition To Nonpublic Schools		321,097.00		321,097.00
567 Tuition To Approved Private Schools (APS) and PA Chartered Schools for the Deaf and Blind			167,686.00	167,686.00
580 Travel	704.00	43.00		747.00
594 IU Payment By Withholding for Institutionalized Children's Programs – Special Classes	509.00	509.00		1,018.00
597 Direct Payments To Intermediate Units for Institutionalized Childrens' Program	153,213.00			153,213.00
<b>Total Other Purchased Services</b>	<b>\$154,426.00</b>	<b>\$329,753.00</b>	<b>\$167,686.00</b>	<b>\$651,865.00</b>
<b>600 Supplies</b>				
610 General Supplies	6,557.00	17,714.00		24,271.00
<b>Total Supplies</b>	<b>\$6,557.00</b>	<b>\$17,714.00</b>		<b>\$24,271.00</b>
<b>800 Other Objects</b>				
810 Dues and Fees	806.00	(1,992.00)		(1,186.00)
<b>Total Other Objects</b>	<b>\$806.00</b>	<b>(\$1,992.00)</b>		<b>(\$1,186.00)</b>
<b>Total 1200 Special Programs – Elementary / Secondary</b>	<b>\$2,277,349.00</b>	<b>\$1,084,749.00</b>	<b>\$276,314.00</b>	<b>\$3,638,412.00</b>

LEA : 127041503 Big Beaver Falls Area SD

Printed 10/25/2018 2:52:23 PM

Page - 6 of 27

## General Fund (10)

## 1210 Life Skills Support

	<u>Elementary</u>	<u>Secondary</u>	<u>Federal</u>	<u>Total</u>
<b>100 Personnel Services – Salaries</b>				
100 Personnel Services – Salaries	44,701.00	132,310.00		177,011.00
<b>Total Personnel Services – Salaries</b>	<b>\$44,701.00</b>	<b>\$132,310.00</b>		<b>\$177,011.00</b>
<b>200 Personnel Services – Employee Benefits</b>				
210 Group Insurance – Contracted Provider	13,870.00	28,246.00		42,116.00
220 Social Security Contributions	3,354.00	9,964.00		13,318.00
230 PSERS Retirement Contributions	14,559.00	43,256.00		57,815.00
260 Workers' Compensation	750.00	1,750.00		2,500.00
270 Group Insurance – Self-Insurance	725.00	2,175.00		2,900.00
<b>Total Personnel Services – Employee Benefits</b>	<b>\$33,258.00</b>	<b>\$85,391.00</b>		<b>\$118,649.00</b>
<b>300 Purchased Professional and Technical Services</b>				
322 Professional Educational Services – Ius	614,523.00			614,523.00
<b>Total Purchased Professional and Technical Services</b>	<b>\$614,523.00</b>			<b>\$614,523.00</b>
<b>600 Supplies</b>				
610 General Supplies	135.00	369.00		504.00
<b>Total Supplies</b>	<b>\$135.00</b>	<b>\$369.00</b>		<b>\$504.00</b>
<b>Total 1210 Life Skills Support</b>	<b>\$692,617.00</b>	<b>\$218,070.00</b>		<b>\$910,687.00</b>

LEA : 127041503 Big Beaver Falls Area SD

Printed 10/25/2018 2:52:23 PM

Page - 7 of 27

## General Fund (10)

## 1220 Sensory Support

	<u>Elementary</u>	<u>Secondary</u>	<u>Federal</u>	<u>Total</u>
<b>100 Personnel Services – Salaries</b>				
100 Personnel Services – Salaries	70,332.00	4,235.00		74,567.00
<b>Total Personnel Services – Salaries</b>	<b>\$70,332.00</b>	<b>\$4,235.00</b>		<b>\$74,567.00</b>
<b>200 Personnel Services – Employee Benefits</b>				
210 Group Insurance – Contracted Provider	7,994.00	87.00		8,081.00
220 Social Security Contributions	6,496.00	324.00		6,820.00
230 PSERS Retirement Contributions	26,088.00			26,088.00
260 Workers' Compensation	1,000.00	1,000.00		2,000.00
270 Group Insurance – Self-Insurance	1,825.00	425.00		2,250.00
<b>Total Personnel Services – Employee Benefits</b>	<b>\$43,403.00</b>	<b>\$1,836.00</b>		<b>\$45,239.00</b>
<b>500 Other Purchased Services</b>				
580 Travel	374.00			374.00
<b>Total Other Purchased Services</b>	<b>\$374.00</b>			<b>\$374.00</b>
<b>600 Supplies</b>				
610 General Supplies	959.00			959.00
<b>Total Supplies</b>	<b>\$959.00</b>			<b>\$959.00</b>
<b>800 Other Objects</b>				
810 Dues and Fees	806.00			806.00
<b>Total Other Objects</b>	<b>\$806.00</b>			<b>\$806.00</b>
<b>Total 1220 Sensory Support</b>	<b>\$115,874.00</b>	<b>\$6,071.00</b>		<b>\$121,945.00</b>



LEA : 127041503 Big Beaver Falls Area SD

Printed 10/25/2018 2:52:23 PM

Page - 8 of 27

## General Fund (10)

## 1230 Emotional Support

	<u>Elementary</u>	<u>Secondary</u>	<u>Federal</u>	<u>Total</u>
<b>100 Personnel Services – Salaries</b>				
100 Personnel Services – Salaries	250,119.00	71,175.00		321,294.00
<b>Total Personnel Services – Salaries</b>	<b>\$250,119.00</b>	<b>\$71,175.00</b>		<b>\$321,294.00</b>
<b>200 Personnel Services – Employee Benefits</b>				
210 Group Insurance – Contracted Provider	55,616.00	15,449.00		71,065.00
220 Social Security Contributions	18,311.00	5,409.00		23,720.00
230 PSERS Retirement Contributions	81,464.00	23,182.00		104,646.00
260 Workers' Compensation	1,000.00	1,000.00		2,000.00
270 Group Insurance – Self-Insurance	2,150.00	750.00		2,900.00
<b>Total Personnel Services – Employee Benefits</b>	<b>\$158,541.00</b>	<b>\$45,790.00</b>		<b>\$204,331.00</b>
<b>500 Other Purchased Services</b>				
563 Tuition To Nonpublic Schools		321,097.00		321,097.00
<b>Total Other Purchased Services</b>		<b>\$321,097.00</b>		<b>\$321,097.00</b>
<b>Total 1230 Emotional Support</b>	<b>\$408,660.00</b>	<b>\$438,062.00</b>		<b>\$846,722.00</b>

LEA : 127041503 Big Beaver Falls Area SD

Printed 10/25/2018 2:52:23 PM

Page - 9 of 27

## General Fund (10)

## 1240 Academic Support

	<u>Elementary</u>	<u>Secondary</u>	<u>Federal</u>	<u>Total</u>
<b>100 Personnel Services – Salaries</b>				
100 Personnel Services – Salaries	470,129.00	211,710.00		681,839.00
<b>Total Personnel Services – Salaries</b>	<b>\$470,129.00</b>	<b>\$211,710.00</b>		<b>\$681,839.00</b>
<b>200 Personnel Services – Employee Benefits</b>				
210 Group Insurance – Contracted Provider	111,339.00	91,017.00		202,356.00
220 Social Security Contributions	35,425.00	15,913.00		51,338.00
230 PSERS Retirement Contributions	152,217.00	68,955.00		221,172.00
260 Workers' Compensation	3,774.00	3,755.00		7,529.00
270 Group Insurance – Self-Insurance	8,838.00	7,187.00		16,025.00
<b>Total Personnel Services – Employee Benefits</b>	<b>\$311,593.00</b>	<b>\$186,827.00</b>		<b>\$498,420.00</b>
<b>500 Other Purchased Services</b>				
510 Student Transportation Services		8,104.00		8,104.00
580 Travel	330.00	43.00		373.00
<b>Total Other Purchased Services</b>	<b>\$330.00</b>	<b>\$8,147.00</b>		<b>\$8,477.00</b>
<b>600 Supplies</b>				
610 General Supplies	5,463.00	17,345.00		22,808.00
<b>Total Supplies</b>	<b>\$5,463.00</b>	<b>\$17,345.00</b>		<b>\$22,808.00</b>
<b>800 Other Objects</b>				
810 Dues and Fees		(1,992.00)		(1,992.00)
<b>Total Other Objects</b>		<b>(\$1,992.00)</b>		<b>(\$1,992.00)</b>
<b>Total 1240 Academic Support</b>	<b>\$787,515.00</b>	<b>\$422,037.00</b>		<b>\$1,209,552.00</b>

LEA : 127041503 Big Beaver Falls Area SD

Printed 10/25/2018 2:52:23 PM

Page - 10 of 27

## General Fund (10)

## 1241 Learning Support – Public

	<u>Elementary</u>	<u>Secondary</u>	<u>Federal</u>	<u>Total</u>
<b>100 Personnel Services – Salaries</b>				
100 Personnel Services – Salaries	374,789.00	211,710.00		586,499.00
<b>Total Personnel Services – Salaries</b>	<b>\$374,789.00</b>	<b>\$211,710.00</b>		<b>\$586,499.00</b>
<b>200 Personnel Services – Employee Benefits</b>				
210 Group Insurance – Contracted Provider	99,262.00	74,217.00		173,479.00
220 Social Security Contributions	28,205.00	15,913.00		44,118.00
230 PSERS Retirement Contributions	121,556.00	68,955.00		190,511.00
260 Workers' Compensation	2,774.00	2,755.00		5,529.00
270 Group Insurance – Self-Insurance	7,388.00	7,137.00		14,525.00
<b>Total Personnel Services – Employee Benefits</b>	<b>\$259,185.00</b>	<b>\$168,977.00</b>		<b>\$428,162.00</b>
<b>600 Supplies</b>				
610 General Supplies	5,350.00	4,386.00		9,736.00
<b>Total Supplies</b>	<b>\$5,350.00</b>	<b>\$4,386.00</b>		<b>\$9,736.00</b>
<b>Total 1241 Learning Support – Public</b>	<b>\$639,324.00</b>	<b>\$385,073.00</b>		<b>\$1,024,397.00</b>

LEA : 127041503 Big Beaver Falls Area SD

Printed 10/25/2018 2:52:23 PM

Page - 11 of 27

## General Fund (10)

## 1243 Gifted Support

	<u>Elementary</u>	<u>Secondary</u>	<u>Federal</u>	<u>Total</u>
<b>100 Personnel Services – Salaries</b>				
100 Personnel Services – Salaries	95,340.00			95,340.00
<b>Total Personnel Services – Salaries</b>	<b>\$95,340.00</b>			<b>\$95,340.00</b>
<b>200 Personnel Services – Employee Benefits</b>				
210 Group Insurance – Contracted Provider	12,077.00	16,800.00		28,877.00
220 Social Security Contributions	7,220.00			7,220.00
230 PSERS Retirement Contributions	30,661.00			30,661.00
260 Workers' Compensation	1,000.00	1,000.00		2,000.00
270 Group Insurance – Self-Insurance	1,450.00	50.00		1,500.00
<b>Total Personnel Services – Employee Benefits</b>	<b>\$52,408.00</b>	<b>\$17,850.00</b>		<b>\$70,258.00</b>
<b>500 Other Purchased Services</b>				
510 Student Transportation Services		8,104.00		8,104.00
580 Travel	330.00	43.00		373.00
<b>Total Other Purchased Services</b>	<b>\$330.00</b>	<b>\$8,147.00</b>		<b>\$8,477.00</b>
<b>600 Supplies</b>				
610 General Supplies	113.00	12,959.00		13,072.00
<b>Total Supplies</b>	<b>\$113.00</b>	<b>\$12,959.00</b>		<b>\$13,072.00</b>
<b>800 Other Objects</b>				
810 Dues and Fees		(1,992.00)		(1,992.00)
<b>Total Other Objects</b>		<b>(\$1,992.00)</b>		<b>(\$1,992.00)</b>
<b>Total 1243 Gifted Support</b>	<b>\$148,191.00</b>	<b>\$36,964.00</b>		<b>\$185,155.00</b>

LEA : 127041503 Big Beaver Falls Area SD

Printed 10/25/2018 2:52:23 PM

Page - 12 of 27

## General Fund (10)

## 1260 Physical Support

300 Purchased Professional and Technical Services

330 Other Professional Services

**Total Purchased Professional and Technical Services****Total 1260 Physical Support**ElementarySecondaryFederalTotal

118,607.00

118,607.00

**\$118,607.00****\$118,607.00****\$118,607.00****\$118,607.00**

LEA : 127041503 Big Beaver Falls Area SD

Printed 10/25/2018 2:52:23 PM

Page - 13 of 27

## General Fund (10)

## 1270 Multi-Handicapped Support

300 Purchased Professional and Technical Services

322 Professional Educational Services – Ius

323 Professional Educational Services – Other Educational Agencies

**Total Purchased Professional and Technical Services**ElementarySecondaryFederalTotal

354.00

64,572.00

64,926.00

44,056.00

44,056.00

**\$354.00****\$108,628.00****\$108,982.00**500 Other Purchased Services

597 Direct Payments To Intermediate Units for Institutionalized Childrens' Program

153,213.00

153,213.00

**Total Other Purchased Services****\$153,213.00****\$153,213.00****Total 1270 Multi-Handicapped Support****\$153,567.00****\$108,628.00****\$262,195.00**

LEA : 127041503 Big Beaver Falls Area SD

Printed 10/25/2018 2:52:23 PM

Page - 14 of 27

## General Fund (10)

## 1290 Special Programs - Other Support

500 Other Purchased Services

567 Tuition To Approved Private Schools (APS) and PA Chartered Schools for the Deaf and Blind

594 IU Payment By Withholding for Institutionalized Children's Programs – Special Classes

**Total Other Purchased Services****Total 1290 Special Programs - Other Support**

<u>Elementary</u>	<u>Secondary</u>	<u>Federal</u>	<u>Total</u>
		167,686.00	167,686.00
509.00	509.00		1,018.00
<b>\$509.00</b>	<b>\$509.00</b>	<b>\$167,686.00</b>	<b>\$168,704.00</b>
<b>\$509.00</b>	<b>\$509.00</b>	<b>\$167,686.00</b>	<b>\$168,704.00</b>

LEA : 127041503 Big Beaver Falls Area SD

Printed 10/25/2018 2:52:23 PM

Page - 15 of 27

## General Fund (10)

## 1300 Vocational Education

ElementarySecondaryFederalTotal100 Personnel Services – Salaries

100 Personnel Services – Salaries

248,372.00

248,372.00

**Total Personnel Services – Salaries****\$248,372.00****\$248,372.00**200 Personnel Services – Employee Benefits

210 Group Insurance – Contracted Provider

40,996.00

40,996.00

220 Social Security Contributions

19,105.00

19,105.00

230 PSERS Retirement Contributions

80,895.00

80,895.00

260 Workers' Compensation

2,201.00

2,201.00

270 Group Insurance – Self-Insurance

1,500.00

1,500.00

**Total Personnel Services – Employee Benefits****\$144,697.00****\$144,697.00**500 Other Purchased Services

564 Tuition To Career and Technology Centers

274,578.00

274,578.00

**Total Other Purchased Services****\$274,578.00****\$274,578.00**600 Supplies

610 General Supplies

12,779.00

12,779.00

**Total Supplies****\$12,779.00****\$12,779.00****Total 1300 Vocational Education****\$680,426.00****\$680,426.00**



LEA : 127041503 Big Beaver Falls Area SD

Printed 10/25/2018 2:52:23 PM

Page - 16 of 27

## General Fund (10)

## 1400 Other Instructional Programs – Elementary / Secondary

	<u>Elementary</u>	<u>Secondary</u>	<u>Federal</u>	<u>Total</u>
<b>100 Personnel Services – Salaries</b>				
100 Personnel Services – Salaries	2,667.00	114,368.00	41,466.00	158,501.00
<b>Total Personnel Services – Salaries</b>	<b>\$2,667.00</b>	<b>\$114,368.00</b>	<b>\$41,466.00</b>	<b>\$158,501.00</b>
<b>200 Personnel Services – Employee Benefits</b>				
220 Social Security Contributions	199.00	8,699.00	3,158.00	12,056.00
230 PSERS Retirement Contributions	869.00	37,249.00	13,505.00	51,623.00
<b>Total Personnel Services – Employee Benefits</b>	<b>\$1,068.00</b>	<b>\$45,948.00</b>	<b>\$16,663.00</b>	<b>\$63,679.00</b>
<b>300 Purchased Professional and Technical Services</b>				
340 Technical Services		(600.00)		(600.00)
<b>Total Purchased Professional and Technical Services</b>		<b>(\$600.00)</b>		<b>(\$600.00)</b>
<b>500 Other Purchased Services</b>				
561 Tuition To Other School Districts Within the State		28,425.00		28,425.00
563 Tuition To Nonpublic Schools		52,350.00		52,350.00
<b>Total Other Purchased Services</b>		<b>\$80,775.00</b>		<b>\$80,775.00</b>
<b>600 Supplies</b>				
610 General Supplies		3,922.00	23,537.00	27,459.00
620 Energy		384.00		384.00
<b>Total Supplies</b>		<b>\$4,306.00</b>	<b>\$23,537.00</b>	<b>\$27,843.00</b>
<b>Total 1400 Other Instructional Programs – Elementary / Secondary</b>	<b>\$3,735.00</b>	<b>\$244,797.00</b>	<b>\$81,666.00</b>	<b>\$330,198.00</b>

## General Fund (10)

## 1410 Drivers' Education

	<u>Elementary</u>	<u>Secondary</u>	<u>Federal</u>	<u>Total</u>
<b>100 <u>Personnel Services – Salaries</u></b>				
100 Personnel Services – Salaries		6,000.00		6,000.00
<b>Total Personnel Services – Salaries</b>		<b>\$6,000.00</b>		<b>\$6,000.00</b>
<b>200 <u>Personnel Services – Employee Benefits</u></b>				
220 Social Security Contributions		457.00		457.00
230 PSERS Retirement Contributions		1,954.00		1,954.00
<b>Total Personnel Services – Employee Benefits</b>		<b>\$2,411.00</b>		<b>\$2,411.00</b>
<b>300 <u>Purchased Professional and Technical Services</u></b>				
340 Technical Services		(600.00)		(600.00)
<b>Total Purchased Professional and Technical Services</b>		<b>(\$600.00)</b>		<b>(\$600.00)</b>
<b>600 <u>Supplies</u></b>				
610 General Supplies		235.00		235.00
620 Energy		384.00		384.00
<b>Total Supplies</b>		<b>\$619.00</b>		<b>\$619.00</b>
<b>Total 1410 Drivers' Education</b>		<b>\$8,430.00</b>		<b>\$8,430.00</b>

LEA : 127041503 Big Beaver Falls Area SD

Printed 10/25/2018 2:52:23 PM

Page - 18 of 27

## General Fund (10)

## 1420 Summer School

	<u>Elementary</u>	<u>Secondary</u>	<u>Federal</u>	<u>Total</u>
<b>100 Personnel Services – Salaries</b>				
100 Personnel Services – Salaries	1,873.00	1,849.00		3,722.00
<b>Total Personnel Services – Salaries</b>	<b>\$1,873.00</b>	<b>\$1,849.00</b>		<b>\$3,722.00</b>
<b>200 Personnel Services – Employee Benefits</b>				
220 Social Security Contributions	138.00	141.00		279.00
230 PSERS Retirement Contributions	610.00	602.00		1,212.00
<b>Total Personnel Services – Employee Benefits</b>	<b>\$748.00</b>	<b>\$743.00</b>		<b>\$1,491.00</b>
<b>Total 1420 Summer School</b>	<b>\$2,621.00</b>	<b>\$2,592.00</b>		<b>\$5,213.00</b>

LEA : 127041503 Big Beaver Falls Area SD

Printed 10/25/2018 2:52:23 PM

Page - 19 of 27

## General Fund (10)

1430 Homebound Instruction	<u>Elementary</u>	<u>Secondary</u>	<u>Federal</u>	<u>Total</u>
<b>100 Personnel Services – Salaries</b>				
100 Personnel Services – Salaries	794.00	793.00		1,587.00
<b>Total Personnel Services – Salaries</b>	<b>\$794.00</b>	<b>\$793.00</b>		<b>\$1,587.00</b>
<b>200 Personnel Services – Employee Benefits</b>				
220 Social Security Contributions	61.00	60.00		121.00
230 PSERS Retirement Contributions	259.00	258.00		517.00
<b>Total Personnel Services – Employee Benefits</b>	<b>\$320.00</b>	<b>\$318.00</b>		<b>\$638.00</b>
<b>Total 1430 Homebound Instruction</b>	<b>\$1,114.00</b>	<b>\$1,111.00</b>		<b>\$2,225.00</b>

LEA : 127041503 Big Beaver Falls Area SD

Printed 10/25/2018 2:52:23 PM

Page - 20 of 27

## General Fund (10)

## 1440 Alternative Regular Education Programs

ElementarySecondaryFederalTotal100 Personnel Services – Salaries

100 Personnel Services – Salaries

105,726.00

105,726.00

**Total Personnel Services – Salaries****\$105,726.00****\$105,726.00**200 Personnel Services – Employee Benefits

220 Social Security Contributions

8,041.00

8,041.00

230 PSERS Retirement Contributions

34,435.00

34,435.00

**Total Personnel Services – Employee Benefits****\$42,476.00****\$42,476.00**500 Other Purchased Services

561 Tuition To Other School Districts Within the State

28,425.00

28,425.00

563 Tuition To Nonpublic Schools

52,350.00

52,350.00

**Total Other Purchased Services****\$80,775.00****\$80,775.00**600 Supplies

610 General Supplies

3,687.00

3,687.00

**Total Supplies****\$3,687.00****\$3,687.00****Total 1440 Alternative Regular Education Programs****\$232,664.00****\$232,664.00**

LEA : 127041503 Big Beaver Falls Area SD

Printed 10/25/2018 2:52:23 PM

Page - 21 of 27

## General Fund (10)

## 1441 Adjudicated / Court-Placed Programs

ElementarySecondaryFederalTotal500 Other Purchased Services

561 Tuition To Other School Districts Within the State

28,425.00

28,425.00

**Total Other Purchased Services****\$28,425.00****\$28,425.00****Total 1441 Adjudicated / Court-Placed Programs****\$28,425.00****\$28,425.00**

LEA : 127041503 Big Beaver Falls Area SD

Printed 10/25/2018 2:52:23 PM

Page - 22 of 27

## General Fund (10)

## 1442 Alternative Education Programs

	<u>Elementary</u>	<u>Secondary</u>	<u>Federal</u>	<u>Total</u>
<b>100 Personnel Services – Salaries</b>				
100 Personnel Services – Salaries		105,726.00		105,726.00
<b>Total Personnel Services – Salaries</b>		<b>\$105,726.00</b>		<b>\$105,726.00</b>
<b>200 Personnel Services – Employee Benefits</b>				
220 Social Security Contributions		8,041.00		8,041.00
230 PSERS Retirement Contributions		34,435.00		34,435.00
<b>Total Personnel Services – Employee Benefits</b>		<b>\$42,476.00</b>		<b>\$42,476.00</b>
<b>500 Other Purchased Services</b>				
563 Tuition To Nonpublic Schools		52,350.00		52,350.00
<b>Total Other Purchased Services</b>		<b>\$52,350.00</b>		<b>\$52,350.00</b>
<b>600 Supplies</b>				
610 General Supplies		3,687.00		3,687.00
<b>Total Supplies</b>		<b>\$3,687.00</b>		<b>\$3,687.00</b>
<b>Total 1442 Alternative Education Programs</b>		<b>\$204,239.00</b>		<b>\$204,239.00</b>

LEA : 127041503 Big Beaver Falls Area SD

Printed 10/25/2018 2:52:23 PM

Page - 23 of 27

## General Fund (10)

## 1490 Additional Other Instructional Programs

ElementarySecondaryFederalTotal100 Personnel Services – Salaries

100 Personnel Services – Salaries

41,466.00

41,466.00

**Total Personnel Services – Salaries****\$41,466.00****\$41,466.00**200 Personnel Services – Employee Benefits

220 Social Security Contributions

3,158.00

3,158.00

230 PSERS Retirement Contributions

13,505.00

13,505.00

**Total Personnel Services – Employee Benefits****\$16,663.00****\$16,663.00**600 Supplies

610 General Supplies

23,537.00

23,537.00

**Total Supplies****\$23,537.00****\$23,537.00****Total 1490 Additional Other Instructional Programs****\$81,666.00****\$81,666.00**



LEA : 127041503 Big Beaver Falls Area SD

Printed 10/25/2018 2:52:23 PM

Page - 24 of 27

## General Fund (10)

## 1500 Nonpublic School Programs

ElementarySecondaryFederalTotal300 Purchased Professional and Technical Services

330 Other Professional Services

36,990.00

36,990.00

**Total Purchased Professional and Technical Services****\$36,990.00****\$36,990.00**600 Supplies

610 General Supplies

2,413.00

2,413.00

**Total Supplies****\$2,413.00****\$2,413.00****Total 1500 Nonpublic School Programs****\$39,403.00****\$39,403.00**

LEA : 127041503 Big Beaver Falls Area SD

Printed 10/25/2018 2:52:23 PM

Page - 25 of 27

## General Fund (10)

## 1800 Pre-Kindergarten

ElementarySecondaryFederalTotal100 Personnel Services – Salaries

100 Personnel Services – Salaries

175,611.00

**Total Personnel Services – Salaries****\$175,611.00**200 Personnel Services – Employee Benefits

210 Group Insurance – Contracted Provider

37,137.00

220 Social Security Contributions

13,434.00

230 PSERS Retirement Contributions

44,034.00

270 Group Insurance – Self-Insurance

2,250.00

**Total Personnel Services – Employee Benefits****\$96,855.00**500 Other Purchased Services

580 Travel

1,061.00

**Total Other Purchased Services****\$1,061.00**600 Supplies

610 General Supplies

54,860.00

**Total Supplies****\$54,860.00****Total 1800 Pre-Kindergarten****\$328,387.00**

LEA : 127041503 Big Beaver Falls Area SD

Printed 10/25/2018 2:52:23 PM

Page - 26 of 27

## General Fund (10)

## 1801 Pre-K Instruction

	<u>Elementary</u>	<u>Secondary</u>	<u>Federal</u>	<u>Total</u>
<b>100 Personnel Services – Salaries</b>				
100 Personnel Services – Salaries				175,611.00
<b>Total Personnel Services – Salaries</b>				<b>\$175,611.00</b>
<b>200 Personnel Services – Employee Benefits</b>				
210 Group Insurance – Contracted Provider				37,137.00
220 Social Security Contributions				13,434.00
230 PSERS Retirement Contributions				44,034.00
270 Group Insurance – Self-Insurance				2,250.00
<b>Total Personnel Services – Employee Benefits</b>				<b>\$96,855.00</b>
<b>600 Supplies</b>				
610 General Supplies				54,578.00
<b>Total Supplies</b>				<b>\$54,578.00</b>
<b>Total 1801 Pre-K Instruction</b>				<b>\$327,044.00</b>

LEA : 127041503 Big Beaver Falls Area SD

Printed 10/25/2018 2:52:23 PM

Page - 27 of 27

## General Fund (10)

## 1806 Pre-K Professional Development

500 Other Purchased Services

580 Travel

**Total Other Purchased Services**600 Supplies

610 General Supplies

**Total Supplies****Total 1806 Pre-K Professional Development**ElementarySecondaryFederalTotal

1,061.00

**\$1,061.00**

282.00

**\$282.00****\$1,343.00**

LEA : 127041503 Big Beaver Falls Area SD

Printed 10/25/2018 2:52:26 PM

Page - 1 of 40

**General Fund (10)****2000 Support Services****Total****100 Personnel Services – Salaries**

100 Personnel Services – Salaries

3,362,328.00

**Total Personnel Services – Salaries****\$3,362,328.00****200 Personnel Services – Employee Benefits**

210 Group Insurance – Contracted Provider

713,898.00

220 Social Security Contributions

255,098.00

230 PSERS Retirement Contributions

1,079,603.00

240 Tuition Reimbursement

17,355.00

250 Unemployment Compensation

1,050.00

260 Workers' Compensation

28,790.00

270 Group Insurance – Self-Insurance

41,252.00

299 All Other Employee Benefits

544.00

**Total Personnel Services – Employee Benefits****\$2,137,590.00****300 Purchased Professional and Technical Services**

310 Official / Administrative Services

108,361.00

329 Professional Educational Services – Other

16,285.00

330 Other Professional Services

174,409.00

340 Technical Services

33,586.00

350 Security / Safety Services

220.00

**Total Purchased Professional and Technical Services****\$332,861.00****400 Purchased Property Services**

410 Cleaning Services

41,041.00

420 Utility Services

79,496.00

430 Repairs and Maintenance Services

214,969.00

440 Rentals

66,724.00

460 Extermination Services

3,347.00

**Total Purchased Property Services****\$405,577.00****500 Other Purchased Services**

513 Contracted Carriers

1,271,213.00

516 Student Transportation Services From the IU

10,222.00

520 Insurance – General

2,065.00

523 General Property and Liability Insurance

86,544.00

530 Communications

80,658.00

541 Advertising Related to Federal Grant Awards

2,747.00

549 Other Advertising/Public Relations

8,581.00

550 Printing and Binding

3,982.00

580 Travel

12,884.00

595 IU Payments By Withholding

7,388.00

**Total Other Purchased Services****\$1,486,284.00****600 Supplies**

610 General Supplies

457,426.00

620 Energy

500,918.00

650 Supplies &amp; Fees – Technology Related

31,034.00

LEA : 127041503 Big Beaver Falls Area SD

Printed 10/25/2018 2:52:26 PM

Page - 2 of 40

## General Fund (10)

## 2000 Support Services

	<u>Total</u>
<b>Total Supplies</b>	<b>\$989,378.00</b>
<b>700 <u>Property</u></b>	
762 Capitalized Equipment - Replacement	18,667.00
<b>Total Property</b>	<b>\$18,667.00</b>
<b>800 <u>Other Objects</u></b>	
810 Dues and Fees	45,931.00
<b>Total Other Objects</b>	<b>\$45,931.00</b>
<b>Total 2000 Support Services</b>	<b>\$8,778,616.00</b>

LEA : 127041503 Big Beaver Falls Area SD

Printed 10/25/2018 2:52:26 PM

Page - 3 of 40

## General Fund (10)

## 2100 Support Services – Students

100 Personnel Services – Salaries

	<u>Elementary</u>	<u>Secondary</u>	<u>Federal</u>	<u>Total</u>
100 Personnel Services – Salaries	198,050.00	447,207.00	98,176.00	743,433.00

**Total Personnel Services – Salaries**

<b>\$198,050.00</b>	<b>\$447,207.00</b>	<b>\$98,176.00</b>	<b>\$743,433.00</b>
---------------------	---------------------	--------------------	---------------------

200 Personnel Services – Employee Benefits

210 Group Insurance – Contracted Provider	21,693.00	66,049.00	33,508.00	121,250.00
---	-----------	-----------	-----------	------------

220 Social Security Contributions	15,038.00	33,424.00	7,319.00	55,781.00
-----------------------------------	-----------	-----------	----------	-----------

230 PSERS Retirement Contributions	62,428.00	144,215.00	31,976.00	238,619.00
------------------------------------	-----------	------------	-----------	------------

260 Workers' Compensation	545.00	1,115.00		1,660.00
---------------------------	--------	----------	--	----------

270 Group Insurance – Self-Insurance	1,126.00	2,574.00		3,700.00
--------------------------------------	----------	----------	--	----------

**Total Personnel Services – Employee Benefits**

<b>\$100,830.00</b>	<b>\$247,377.00</b>	<b>\$72,803.00</b>	<b>\$421,010.00</b>
---------------------	---------------------	--------------------	---------------------

300 Purchased Professional and Technical Services

329 Professional Educational Services – Other			16,285.00	16,285.00
---	--	--	-----------	-----------

**Total Purchased Professional and Technical Services**

<b>\$16,285.00</b>	<b>\$16,285.00</b>
--------------------	--------------------

500 Other Purchased Services

580 Travel	974.00	1,250.00		2,224.00
------------	--------	----------	--	----------

**Total Other Purchased Services**

<b>\$974.00</b>	<b>\$1,250.00</b>	<b>\$2,224.00</b>
-----------------	-------------------	-------------------

600 Supplies

610 General Supplies	3,095.00	4,213.00		7,308.00
----------------------	----------	----------	--	----------

**Total Supplies**

<b>\$3,095.00</b>	<b>\$4,213.00</b>	<b>\$7,308.00</b>
-------------------	-------------------	-------------------

800 Other Objects

810 Dues and Fees	(955.00)	245.00		(710.00)
-------------------	----------	--------	--	----------

**Total Other Objects**

<b>(\$955.00)</b>	<b>\$245.00</b>	<b>(\$710.00)</b>
-------------------	-----------------	-------------------

**Total 2100 Support Services – Students**

<b>\$301,994.00</b>	<b>\$700,292.00</b>	<b>\$187,264.00</b>	<b>\$1,189,550.00</b>
---------------------	---------------------	---------------------	-----------------------

LEA : 127041503 Big Beaver Falls Area SD

Printed 10/25/2018 2:52:26 PM

Page - 4 of 40

## General Fund (10)

## 2110 Supervision of Student Services

100 Personnel Services – SalariesElementarySecondaryFederalTotal

100 Personnel Services – Salaries

88,292.00

88,291.00

176,583.00

**Total Personnel Services – Salaries****\$88,292.00****\$88,291.00****\$176,583.00**200 Personnel Services – Employee Benefits

210 Group Insurance – Contracted Provider

12,928.00

12,928.00

25,856.00

220 Social Security Contributions

6,695.00

6,694.00

13,389.00

230 PSERS Retirement Contributions

28,096.00

28,095.00

56,191.00

270 Group Insurance – Self-Insurance

25.00

25.00

50.00

**Total Personnel Services – Employee Benefits****\$47,744.00****\$47,742.00****\$95,486.00**500 Other Purchased Services

580 Travel

269.00

269.00

538.00

**Total Other Purchased Services****\$269.00****\$269.00****\$538.00**600 Supplies

610 General Supplies

445.00

444.00

889.00

**Total Supplies****\$445.00****\$444.00****\$889.00**800 Other Objects

810 Dues and Fees

(1,098.00)

(1,097.00)

(2,195.00)

**Total Other Objects****(\$1,098.00)****(\$1,097.00)****(\$2,195.00)****Total 2110 Supervision of Student Services****\$135,652.00****\$135,649.00****\$271,301.00**



LEA : 127041503 Big Beaver Falls Area SD

Printed 10/25/2018 2:52:26 PM

Page - 5 of 40

## General Fund (10)

## 2111 Supervision of Student Services – Head of Component

	<u>Elementary</u>	<u>Secondary</u>	<u>Federal</u>	<u>Total</u>
<b>100 Personnel Services – Salaries</b>				
100 Personnel Services – Salaries	88,292.00	88,291.00		176,583.00
<b>Total Personnel Services – Salaries</b>	<b>\$88,292.00</b>	<b>\$88,291.00</b>		<b>\$176,583.00</b>
<b>200 Personnel Services – Employee Benefits</b>				
210 Group Insurance – Contracted Provider	12,928.00	12,928.00		25,856.00
220 Social Security Contributions	6,695.00	6,694.00		13,389.00
230 PSERS Retirement Contributions	28,096.00	28,095.00		56,191.00
270 Group Insurance – Self-Insurance	25.00	25.00		50.00
<b>Total Personnel Services – Employee Benefits</b>	<b>\$47,744.00</b>	<b>\$47,742.00</b>		<b>\$95,486.00</b>
<b>500 Other Purchased Services</b>				
580 Travel	269.00	269.00		538.00
<b>Total Other Purchased Services</b>	<b>\$269.00</b>	<b>\$269.00</b>		<b>\$538.00</b>
<b>600 Supplies</b>				
610 General Supplies	445.00	444.00		889.00
<b>Total Supplies</b>	<b>\$445.00</b>	<b>\$444.00</b>		<b>\$889.00</b>
<b>800 Other Objects</b>				
810 Dues and Fees	(1,098.00)	(1,097.00)		(2,195.00)
<b>Total Other Objects</b>	<b>(\$1,098.00)</b>	<b>(\$1,097.00)</b>		<b>(\$2,195.00)</b>
<b>Total 2111 Supervision of Student Services – Head of Component</b>	<b>\$135,652.00</b>	<b>\$135,649.00</b>		<b>\$271,301.00</b>

LEA : 127041503 Big Beaver Falls Area SD

Printed 10/25/2018 2:52:26 PM

Page - 6 of 40

## General Fund (10)

## 2120 Guidance Services

	<u>Elementary</u>	<u>Secondary</u>	<u>Federal</u>	<u>Total</u>
<b>100 Personnel Services – Salaries</b>				
100 Personnel Services – Salaries	71,112.00	320,272.00	98,176.00	489,560.00
<b>Total Personnel Services – Salaries</b>	<b>\$71,112.00</b>	<b>\$320,272.00</b>	<b>\$98,176.00</b>	<b>\$489,560.00</b>
<b>200 Personnel Services – Employee Benefits</b>				
210 Group Insurance – Contracted Provider		44,358.00	33,508.00	77,866.00
220 Social Security Contributions	5,404.00	23,792.00	7,319.00	36,515.00
230 PSERS Retirement Contributions	22,152.00	103,941.00	31,976.00	158,069.00
260 Workers' Compensation	545.00	1,115.00		1,660.00
270 Group Insurance – Self-Insurance	738.00	2,187.00		2,925.00
<b>Total Personnel Services – Employee Benefits</b>	<b>\$28,839.00</b>	<b>\$175,393.00</b>	<b>\$72,803.00</b>	<b>\$277,035.00</b>
<b>300 Purchased Professional and Technical Services</b>				
329 Professional Educational Services – Other			16,285.00	16,285.00
<b>Total Purchased Professional and Technical Services</b>			<b>\$16,285.00</b>	<b>\$16,285.00</b>
<b>500 Other Purchased Services</b>				
580 Travel	359.00	636.00		995.00
<b>Total Other Purchased Services</b>	<b>\$359.00</b>	<b>\$636.00</b>		<b>\$995.00</b>
<b>600 Supplies</b>				
610 General Supplies	1,600.00	2,720.00		4,320.00
<b>Total Supplies</b>	<b>\$1,600.00</b>	<b>\$2,720.00</b>		<b>\$4,320.00</b>
<b>800 Other Objects</b>				
810 Dues and Fees		1,200.00		1,200.00
<b>Total Other Objects</b>		<b>\$1,200.00</b>		<b>\$1,200.00</b>
<b>Total 2120 Guidance Services</b>	<b>\$101,910.00</b>	<b>\$500,221.00</b>	<b>\$187,264.00</b>	<b>\$789,395.00</b>

LEA : 127041503 Big Beaver Falls Area SD

Printed 10/25/2018 2:52:26 PM

Page - 7 of 40

## General Fund (10)

## 2140 Psychological Services

100 Personnel Services – Salaries

100 Personnel Services – Salaries

ElementarySecondaryFederalTotal

38,646.00

38,644.00

77,290.00

**Total Personnel Services – Salaries****\$38,646.00****\$38,644.00****\$77,290.00**200 Personnel Services – Employee Benefits

210 Group Insurance – Contracted Provider

8,765.00

8,763.00

17,528.00

220 Social Security Contributions

2,939.00

2,938.00

5,877.00

230 PSERS Retirement Contributions

12,180.00

12,179.00

24,359.00

270 Group Insurance – Self-Insurance

363.00

362.00

725.00

**Total Personnel Services – Employee Benefits****\$24,247.00****\$24,242.00****\$48,489.00**500 Other Purchased Services

580 Travel

346.00

345.00

691.00

**Total Other Purchased Services****\$346.00****\$345.00****\$691.00**600 Supplies

610 General Supplies

1,050.00

1,049.00

2,099.00

**Total Supplies****\$1,050.00****\$1,049.00****\$2,099.00**800 Other Objects

810 Dues and Fees

143.00

142.00

285.00

**Total Other Objects****\$143.00****\$142.00****\$285.00****Total 2140 Psychological Services****\$64,432.00****\$64,422.00****\$128,854.00**

LEA : 127041503 Big Beaver Falls Area SD

Printed 10/25/2018 2:52:26 PM

Page - 8 of 40

## General Fund (10)

## 2200 Support Services – Instructional Staff

	<u>Elementary</u>	<u>Secondary</u>	<u>Federal</u>	<u>Total</u>
<b>100 Personnel Services – Salaries</b>				
100 Personnel Services – Salaries	18,512.00	950.00	1,750.00	21,212.00
<b>Total Personnel Services – Salaries</b>	<b>\$18,512.00</b>	<b>\$950.00</b>	<b>\$1,750.00</b>	<b>\$21,212.00</b>
<b>200 Personnel Services – Employee Benefits</b>				
210 Group Insurance – Contracted Provider	46,250.00			46,250.00
220 Social Security Contributions	1,325.00	72.00	134.00	1,531.00
230 PSERS Retirement Contributions	6,029.00	309.00	570.00	6,908.00
240 Tuition Reimbursement	11,355.00	4,000.00		15,355.00
260 Workers' Compensation	642.00			642.00
270 Group Insurance – Self-Insurance	450.00	350.00		800.00
<b>Total Personnel Services – Employee Benefits</b>	<b>\$66,051.00</b>	<b>\$4,731.00</b>	<b>\$704.00</b>	<b>\$71,486.00</b>
<b>300 Purchased Professional and Technical Services</b>				
330 Other Professional Services			6,996.00	6,996.00
<b>Total Purchased Professional and Technical Services</b>			<b>\$6,996.00</b>	<b>\$6,996.00</b>
<b>500 Other Purchased Services</b>				
580 Travel	1,119.00	1,133.00	2,006.00	4,258.00
<b>Total Other Purchased Services</b>	<b>\$1,119.00</b>	<b>\$1,133.00</b>	<b>\$2,006.00</b>	<b>\$4,258.00</b>
<b>600 Supplies</b>				
610 General Supplies	15,735.00	8,529.00	20,723.00	44,987.00
<b>Total Supplies</b>	<b>\$15,735.00</b>	<b>\$8,529.00</b>	<b>\$20,723.00</b>	<b>\$44,987.00</b>
<b>800 Other Objects</b>				
810 Dues and Fees	253.00	252.00		505.00
<b>Total Other Objects</b>	<b>\$253.00</b>	<b>\$252.00</b>		<b>\$505.00</b>
<b>Total 2200 Support Services – Instructional Staff</b>	<b>\$101,670.00</b>	<b>\$15,595.00</b>	<b>\$32,179.00</b>	<b>\$149,444.00</b>

LEA : 127041503 Big Beaver Falls Area SD

Printed 10/25/2018 2:52:26 PM

Page - 9 of 40

## General Fund (10)

2220 Technology Support Services	<u>Elementary</u>	<u>Secondary</u>	<u>Federal</u>	<u>Total</u>
<b>100 Personnel Services – Salaries</b>				
100 Personnel Services – Salaries	951.00	950.00		1,901.00
<b>Total Personnel Services – Salaries</b>	<b>\$951.00</b>	<b>\$950.00</b>		<b>\$1,901.00</b>
<b>200 Personnel Services – Employee Benefits</b>				
220 Social Security Contributions	73.00	72.00		145.00
230 PSERS Retirement Contributions	310.00	309.00		619.00
<b>Total Personnel Services – Employee Benefits</b>	<b>\$383.00</b>	<b>\$381.00</b>		<b>\$764.00</b>
<b>Total 2220 Technology Support Services</b>	<b>\$1,334.00</b>	<b>\$1,331.00</b>		<b>\$2,665.00</b>

LEA : 127041503 Big Beaver Falls Area SD

Printed 10/25/2018 2:52:26 PM

Page - 10 of 40

## General Fund (10)

## 2250 School Library Services

	<u>Elementary</u>	<u>Secondary</u>	<u>Federal</u>	<u>Total</u>
<b>100 Personnel Services – Salaries</b>				
100 Personnel Services – Salaries	17,561.00			17,561.00
<b>Total Personnel Services – Salaries</b>	<b>\$17,561.00</b>			<b>\$17,561.00</b>
<b>200 Personnel Services – Employee Benefits</b>				
210 Group Insurance – Contracted Provider	46,250.00			46,250.00
220 Social Security Contributions	1,252.00			1,252.00
230 PSERS Retirement Contributions	5,719.00			5,719.00
260 Workers' Compensation	642.00			642.00
270 Group Insurance – Self-Insurance	450.00	350.00		800.00
<b>Total Personnel Services – Employee Benefits</b>	<b>\$54,313.00</b>	<b>\$350.00</b>		<b>\$54,663.00</b>
<b>600 Supplies</b>				
610 General Supplies	15,399.00	8,193.00		23,592.00
<b>Total Supplies</b>	<b>\$15,399.00</b>	<b>\$8,193.00</b>		<b>\$23,592.00</b>
<b>Total 2250 School Library Services</b>	<b>\$87,273.00</b>	<b>\$8,543.00</b>		<b>\$95,816.00</b>

LEA : 127041503 Big Beaver Falls Area SD

Printed 10/25/2018 2:52:26 PM

Page - 11 of 40

## General Fund (10)

## 2270 Instructional Staff Professional Development Services

	<u>Elementary</u>	<u>Secondary</u>	<u>Federal</u>	<u>Total</u>
<b>100 <u>Personnel Services – Salaries</u></b>				
100 Personnel Services – Salaries			1,750.00	1,750.00
<b>Total Personnel Services – Salaries</b>			<b>\$1,750.00</b>	<b>\$1,750.00</b>
<b>200 <u>Personnel Services – Employee Benefits</u></b>				
220 Social Security Contributions			134.00	134.00
230 PSERS Retirement Contributions			570.00	570.00
240 Tuition Reimbursement	11,355.00	4,000.00		15,355.00
<b>Total Personnel Services – Employee Benefits</b>	<b>\$11,355.00</b>	<b>\$4,000.00</b>	<b>\$704.00</b>	<b>\$16,059.00</b>
<b>300 <u>Purchased Professional and Technical Services</u></b>				
330 Other Professional Services			6,996.00	6,996.00
<b>Total Purchased Professional and Technical Services</b>			<b>\$6,996.00</b>	<b>\$6,996.00</b>
<b>500 <u>Other Purchased Services</u></b>				
580 Travel	1,119.00	1,133.00	2,006.00	4,258.00
<b>Total Other Purchased Services</b>	<b>\$1,119.00</b>	<b>\$1,133.00</b>	<b>\$2,006.00</b>	<b>\$4,258.00</b>
<b>600 <u>Supplies</u></b>				
610 General Supplies	336.00	336.00	20,723.00	21,395.00
<b>Total Supplies</b>	<b>\$336.00</b>	<b>\$336.00</b>	<b>\$20,723.00</b>	<b>\$21,395.00</b>
<b>800 <u>Other Objects</u></b>				
810 Dues and Fees	253.00	252.00		505.00
<b>Total Other Objects</b>	<b>\$253.00</b>	<b>\$252.00</b>		<b>\$505.00</b>
<b>Total 2270 Instructional Staff Professional Development Services</b>	<b>\$13,063.00</b>	<b>\$5,721.00</b>	<b>\$32,179.00</b>	<b>\$50,963.00</b>

LEA : 127041503 Big Beaver Falls Area SD

Printed 10/25/2018 2:52:26 PM

Page - 12 of 40

## General Fund (10)

	<u>Elementary</u>	<u>Secondary</u>	<u>Federal</u>	<u>Total</u>
<b>2300 Support Services – Administration</b>				
<b>100 Personnel Services – Salaries</b>				
100 Personnel Services – Salaries	431,560.00	401,379.00		1,045,437.00
<b>Total Personnel Services – Salaries</b>	<b>\$431,560.00</b>	<b>\$401,379.00</b>		<b>\$1,045,437.00</b>
<b>200 Personnel Services – Employee Benefits</b>				
210 Group Insurance – Contracted Provider	96,143.00	79,119.00		188,097.00
220 Social Security Contributions	30,840.00	30,736.00		77,363.00
230 PSERS Retirement Contributions	143,188.00	126,104.00		329,134.00
260 Workers' Compensation	3,704.00	3,678.00		9,231.00
270 Group Insurance – Self-Insurance	6,588.00	4,387.00		12,475.00
<b>Total Personnel Services – Employee Benefits</b>	<b>\$280,463.00</b>	<b>\$244,024.00</b>		<b>\$616,300.00</b>
<b>300 Purchased Professional and Technical Services</b>				
310 Official / Administrative Services				99,893.00
330 Other Professional Services				66,405.00
<b>Total Purchased Professional and Technical Services</b>				<b>\$166,298.00</b>
<b>400 Purchased Property Services</b>				
440 Rentals	33,362.00	33,362.00		66,724.00
<b>Total Purchased Property Services</b>	<b>\$33,362.00</b>	<b>\$33,362.00</b>		<b>\$66,724.00</b>
<b>500 Other Purchased Services</b>				
520 Insurance – General				2,065.00
541 Advertising Related to Federal Grant Awards				2,747.00
550 Printing and Binding				3,982.00
580 Travel	794.00	585.00		3,527.00
<b>Total Other Purchased Services</b>	<b>\$794.00</b>	<b>\$585.00</b>		<b>\$12,321.00</b>
<b>600 Supplies</b>				
610 General Supplies	22,561.00	1,209.00		37,941.00
<b>Total Supplies</b>	<b>\$22,561.00</b>	<b>\$1,209.00</b>		<b>\$37,941.00</b>
<b>800 Other Objects</b>				
810 Dues and Fees	2,428.00	1,857.00		14,045.00
<b>Total Other Objects</b>	<b>\$2,428.00</b>	<b>\$1,857.00</b>		<b>\$14,045.00</b>
<b>Total 2300 Support Services – Administration</b>	<b>\$771,168.00</b>	<b>\$682,416.00</b>		<b>\$1,959,066.00</b>



LEA : 127041503 Big Beaver Falls Area SD

Printed 10/25/2018 2:52:26 PM

Page - 13 of 40

## General Fund (10)

## 2310 Board Services

ElementarySecondaryFederalTotal300 Purchased Professional and Technical Services

330 Other Professional Services

46,108.00

**Total Purchased Professional and Technical Services****\$46,108.00**500 Other Purchased Services

520 Insurance – General

350.00

541 Advertising Related to Federal Grant Awards

2,747.00

**Total Other Purchased Services****\$3,097.00**600 Supplies

610 General Supplies

5,304.00

**Total Supplies****\$5,304.00**800 Other Objects

810 Dues and Fees

5,765.00

**Total Other Objects****\$5,765.00****Total 2310 Board Services****\$60,274.00**

LEA : 127041503 Big Beaver Falls Area SD

Printed 10/25/2018 2:52:26 PM

Page - 14 of 40

## General Fund (10)

2330 Tax Assessment and Collection Services				
	<u>Elementary</u>	<u>Secondary</u>	<u>Federal</u>	<u>Total</u>
100 <u>Personnel Services – Salaries</u>				
100 Personnel Services – Salaries				28,566.00
<b>Total Personnel Services – Salaries</b>				<b>\$28,566.00</b>
200 <u>Personnel Services – Employee Benefits</u>				
220 Social Security Contributions				2,185.00
260 Workers' Compensation				327.00
<b>Total Personnel Services – Employee Benefits</b>				<b>\$2,512.00</b>
300 <u>Purchased Professional and Technical Services</u>				
310 Official / Administrative Services				99,893.00
<b>Total Purchased Professional and Technical Services</b>				<b>\$99,893.00</b>
500 <u>Other Purchased Services</u>				
520 Insurance – General				1,715.00
550 Printing and Binding				3,982.00
<b>Total Other Purchased Services</b>				<b>\$5,697.00</b>
<b>Total 2330 Tax Assessment and Collection Services</b>				<b>\$136,668.00</b>

## General Fund (10)

## 2350 Legal and Accounting Services

ElementarySecondaryFederalTotal300 Purchased Professional and Technical Services

330 Other Professional Services

20,297.00

**Total Purchased Professional and Technical Services****\$20,297.00****Total 2350 Legal and Accounting Services****\$20,297.00**

LEA : 127041503 Big Beaver Falls Area SD

Printed 10/25/2018 2:52:26 PM

Page - 16 of 40

## General Fund (10)

## 2360 Office of the Superintendent / Executive Director Services

	<u>Elementary</u>	<u>Secondary</u>	<u>Federal</u>	<u>Total</u>
<b>100 Personnel Services – Salaries</b>				
100 Personnel Services – Salaries				183,932.00
<b>Total Personnel Services – Salaries</b>				<b>\$183,932.00</b>
<b>200 Personnel Services – Employee Benefits</b>				
210 Group Insurance – Contracted Provider				12,835.00
220 Social Security Contributions				13,602.00
230 PSERS Retirement Contributions				59,842.00
260 Workers' Compensation				1,522.00
270 Group Insurance – Self-Insurance				1,500.00
<b>Total Personnel Services – Employee Benefits</b>				<b>\$89,301.00</b>
<b>500 Other Purchased Services</b>				
580 Travel				2,148.00
<b>Total Other Purchased Services</b>				<b>\$2,148.00</b>
<b>600 Supplies</b>				
610 General Supplies				8,867.00
<b>Total Supplies</b>				<b>\$8,867.00</b>
<b>800 Other Objects</b>				
810 Dues and Fees				3,995.00
<b>Total Other Objects</b>				<b>\$3,995.00</b>
<b>Total 2360 Office of the Superintendent / Executive Director Services</b>				<b>\$288,243.00</b>

LEA : 127041503 Big Beaver Falls Area SD

Printed 10/25/2018 2:52:26 PM

Page - 17 of 40

## General Fund (10)

	<u>Elementary</u>	<u>Secondary</u>	<u>Federal</u>	<u>Total</u>
<b>2380 Office of the Principal Services</b>				
<b>100 Personnel Services – Salaries</b>				
100 Personnel Services – Salaries	431,560.00	401,379.00		832,939.00
<b>Total Personnel Services – Salaries</b>	<b>\$431,560.00</b>	<b>\$401,379.00</b>		<b>\$832,939.00</b>
<b>200 Personnel Services – Employee Benefits</b>				
210 Group Insurance – Contracted Provider	96,143.00	79,119.00		175,262.00
220 Social Security Contributions	30,840.00	30,736.00		61,576.00
230 PSERS Retirement Contributions	143,188.00	126,104.00		269,292.00
260 Workers' Compensation	3,704.00	3,678.00		7,382.00
270 Group Insurance – Self-Insurance	6,588.00	4,387.00		10,975.00
<b>Total Personnel Services – Employee Benefits</b>	<b>\$280,463.00</b>	<b>\$244,024.00</b>		<b>\$524,487.00</b>
<b>400 Purchased Property Services</b>				
440 Rentals	33,362.00	33,362.00		66,724.00
<b>Total Purchased Property Services</b>	<b>\$33,362.00</b>	<b>\$33,362.00</b>		<b>\$66,724.00</b>
<b>500 Other Purchased Services</b>				
580 Travel	794.00	585.00		1,379.00
<b>Total Other Purchased Services</b>	<b>\$794.00</b>	<b>\$585.00</b>		<b>\$1,379.00</b>
<b>600 Supplies</b>				
610 General Supplies	22,561.00	1,209.00		23,770.00
<b>Total Supplies</b>	<b>\$22,561.00</b>	<b>\$1,209.00</b>		<b>\$23,770.00</b>
<b>800 Other Objects</b>				
810 Dues and Fees	2,428.00	1,857.00		4,285.00
<b>Total Other Objects</b>	<b>\$2,428.00</b>	<b>\$1,857.00</b>		<b>\$4,285.00</b>
<b>Total 2380 Office of the Principal Services</b>	<b>\$771,168.00</b>	<b>\$682,416.00</b>		<b>\$1,453,584.00</b>

LEA : 127041503 Big Beaver Falls Area SD

Printed 10/25/2018 2:52:26 PM

Page - 18 of 40

**General Fund (10)****2400 Support Services – Pupil Health**ElementarySecondaryFederalTotal**100 Personnel Services – Salaries**

100 Personnel Services – Salaries

164,716.00

**Total Personnel Services – Salaries****\$164,716.00****200 Personnel Services – Employee Benefits**

210 Group Insurance – Contracted Provider

31,522.00

220 Social Security Contributions

12,618.00

230 PSERS Retirement Contributions

51,048.00

260 Workers' Compensation

535.00

270 Group Insurance – Self-Insurance

1,475.00

**Total Personnel Services – Employee Benefits****\$97,198.00****300 Purchased Professional and Technical Services**

330 Other Professional Services

66,418.00

**Total Purchased Professional and Technical Services****\$66,418.00****500 Other Purchased Services**

580 Travel

52.00

**Total Other Purchased Services****\$52.00****600 Supplies**

610 General Supplies

2,741.00

**Total Supplies****\$2,741.00****Total 2400 Support Services – Pupil Health****\$331,125.00**

LEA : 127041503 Big Beaver Falls Area SD

Printed 10/25/2018 2:52:26 PM

Page - 19 of 40

## General Fund (10)

## 2440 Nursing Services

	<u>Elementary</u>	<u>Secondary</u>	<u>Federal</u>	<u>Total</u>
<b>100 Personnel Services – Salaries</b>				
100 Personnel Services – Salaries				164,716.00
<b>Total Personnel Services – Salaries</b>				<b>\$164,716.00</b>
<b>200 Personnel Services – Employee Benefits</b>				
210 Group Insurance – Contracted Provider				31,522.00
220 Social Security Contributions				12,618.00
230 PSERS Retirement Contributions				51,048.00
260 Workers' Compensation				535.00
270 Group Insurance – Self-Insurance				1,475.00
<b>Total Personnel Services – Employee Benefits</b>				<b>\$97,198.00</b>
<b>300 Purchased Professional and Technical Services</b>				
330 Other Professional Services				66,418.00
<b>Total Purchased Professional and Technical Services</b>				<b>\$66,418.00</b>
<b>500 Other Purchased Services</b>				
580 Travel				52.00
<b>Total Other Purchased Services</b>				<b>\$52.00</b>
<b>600 Supplies</b>				
610 General Supplies				2,741.00
<b>Total Supplies</b>				<b>\$2,741.00</b>
<b>Total 2440 Nursing Services</b>				<b>\$331,125.00</b>

LEA : 127041503 Big Beaver Falls Area SD

Printed 10/25/2018 2:52:26 PM

Page - 20 of 40

## General Fund (10)

## 2500 Support Services – Business

ElementarySecondaryFederalTotal100 Personnel Services – Salaries

100 Personnel Services – Salaries

239,493.00

**Total Personnel Services – Salaries****\$239,493.00**200 Personnel Services – Employee Benefits

210 Group Insurance – Contracted Provider

49,075.00

220 Social Security Contributions

18,250.00

230 PSERS Retirement Contributions

74,240.00

260 Workers' Compensation

1,000.00

270 Group Insurance – Self-Insurance

2,950.00

**Total Personnel Services – Employee Benefits****\$145,515.00**300 Purchased Professional and Technical Services

310 Official / Administrative Services

8,468.00

340 Technical Services

554.00

**Total Purchased Professional and Technical Services****\$9,022.00**400 Purchased Property Services

430 Repairs and Maintenance Services

728.00

**Total Purchased Property Services****\$728.00**500 Other Purchased Services

530 Communications

25,492.00

549 Other Advertising/Public Relations

5,865.00

580 Travel

1,687.00

**Total Other Purchased Services****\$33,044.00**600 Supplies

610 General Supplies

10,267.00

**Total Supplies****\$10,267.00**800 Other Objects

810 Dues and Fees

28,699.00

**Total Other Objects****\$28,699.00****Total 2500 Support Services – Business****\$466,768.00**



LEA : 127041503 Big Beaver Falls Area SD

Printed 10/25/2018 2:52:26 PM

Page - 21 of 40

## General Fund (10)

## 2510 Fiscal Services

	<u>Elementary</u>	<u>Secondary</u>	<u>Federal</u>	<u>Total</u>
<b>100 <u>Personnel Services – Salaries</u></b>				
100 Personnel Services – Salaries				235,510.00
<b>Total Personnel Services – Salaries</b>				<b>\$235,510.00</b>
<b>200 <u>Personnel Services – Employee Benefits</u></b>				
210 Group Insurance – Contracted Provider				49,075.00
220 Social Security Contributions				17,947.00
230 PSERS Retirement Contributions				72,943.00
260 Workers' Compensation				1,000.00
270 Group Insurance – Self-Insurance				2,950.00
<b>Total Personnel Services – Employee Benefits</b>				<b>\$143,915.00</b>
<b>300 <u>Purchased Professional and Technical Services</u></b>				
310 Official / Administrative Services				8,468.00
<b>Total Purchased Professional and Technical Services</b>				<b>\$8,468.00</b>
<b>400 <u>Purchased Property Services</u></b>				
430 Repairs and Maintenance Services				728.00
<b>Total Purchased Property Services</b>				<b>\$728.00</b>
<b>500 <u>Other Purchased Services</u></b>				
530 Communications				25,492.00
580 Travel				1,687.00
<b>Total Other Purchased Services</b>				<b>\$27,179.00</b>
<b>600 <u>Supplies</u></b>				
610 General Supplies				9,299.00
<b>Total Supplies</b>				<b>\$9,299.00</b>
<b>800 <u>Other Objects</u></b>				
810 Dues and Fees				28,699.00
<b>Total Other Objects</b>				<b>\$28,699.00</b>
<b>Total 2510 Fiscal Services</b>				<b>\$453,798.00</b>

LEA : 127041503 Big Beaver Falls Area SD

Printed 10/25/2018 2:52:26 PM

Page - 22 of 40

## General Fund (10)

## 2511 Supervision of Fiscal Services - Head of Component

	<u>Elementary</u>	<u>Secondary</u>	<u>Federal</u>	<u>Total</u>
<b>100 <u>Personnel Services – Salaries</u></b>				
100 Personnel Services – Salaries				235,510.00
<b>Total Personnel Services – Salaries</b>				<b>\$235,510.00</b>
<b>200 <u>Personnel Services – Employee Benefits</u></b>				
210 Group Insurance – Contracted Provider				49,075.00
220 Social Security Contributions				17,947.00
230 PSERS Retirement Contributions				72,943.00
260 Workers' Compensation				1,000.00
270 Group Insurance – Self-Insurance				2,950.00
<b>Total Personnel Services – Employee Benefits</b>				<b>\$143,915.00</b>
<b>300 <u>Purchased Professional and Technical Services</u></b>				
310 Official / Administrative Services				8,468.00
<b>Total Purchased Professional and Technical Services</b>				<b>\$8,468.00</b>
<b>400 <u>Purchased Property Services</u></b>				
430 Repairs and Maintenance Services				728.00
<b>Total Purchased Property Services</b>				<b>\$728.00</b>
<b>500 <u>Other Purchased Services</u></b>				
530 Communications				25,492.00
580 Travel				1,687.00
<b>Total Other Purchased Services</b>				<b>\$27,179.00</b>
<b>600 <u>Supplies</u></b>				
610 General Supplies				9,299.00
<b>Total Supplies</b>				<b>\$9,299.00</b>
<b>800 <u>Other Objects</u></b>				
810 Dues and Fees				28,699.00
<b>Total Other Objects</b>				<b>\$28,699.00</b>
<b>Total 2511 Supervision of Fiscal Services - Head of Component</b>				<b>\$453,798.00</b>

LEA : 127041503 Big Beaver Falls Area SD

Printed 10/25/2018 2:52:26 PM

Page - 23 of 40

## General Fund (10)

## 2540 Printing, Publishing and Duplicating Services

ElementarySecondaryFederalTotal100 Personnel Services – Salaries

100 Personnel Services – Salaries

3,983.00

**Total Personnel Services – Salaries****\$3,983.00**200 Personnel Services – Employee Benefits

220 Social Security Contributions

303.00

230 PSERS Retirement Contributions

1,297.00

**Total Personnel Services – Employee Benefits****\$1,600.00**300 Purchased Professional and Technical Services

340 Technical Services

554.00

**Total Purchased Professional and Technical Services****\$554.00**500 Other Purchased Services

549 Other Advertising/Public Relations

5,865.00

**Total Other Purchased Services****\$5,865.00**600 Supplies

610 General Supplies

968.00

**Total Supplies****\$968.00****Total 2540 Printing, Publishing and Duplicating Services****\$12,970.00**

LEA : 127041503 Big Beaver Falls Area SD

Printed 10/25/2018 2:52:26 PM

Page - 24 of 40

## General Fund (10)

## 2600 Operation and Maintenance of Plant Services

	<u>Elementary</u>	<u>Secondary</u>	<u>Federal</u>	<u>Total</u>
<b>100 Personnel Services – Salaries</b>				
100 Personnel Services – Salaries				979,836.00
<b>Total Personnel Services – Salaries</b>				<b>\$979,836.00</b>
<b>200 Personnel Services – Employee Benefits</b>				
210 Group Insurance – Contracted Provider				244,691.00
220 Social Security Contributions				75,015.00
230 PSERS Retirement Contributions				318,041.00
250 Unemployment Compensation				1,050.00
260 Workers' Compensation				14,172.00
270 Group Insurance – Self-Insurance				18,052.00
299 All Other Employee Benefits				544.00
<b>Total Personnel Services – Employee Benefits</b>				<b>\$671,565.00</b>
<b>300 Purchased Professional and Technical Services</b>				
330 Other Professional Services				34,590.00
350 Security / Safety Services				220.00
<b>Total Purchased Professional and Technical Services</b>				<b>\$34,810.00</b>
<b>400 Purchased Property Services</b>				
410 Cleaning Services				41,041.00
420 Utility Services				79,496.00
430 Repairs and Maintenance Services				204,710.00
460 Extermination Services				3,347.00
<b>Total Purchased Property Services</b>				<b>\$328,594.00</b>
<b>500 Other Purchased Services</b>				
523 General Property and Liability Insurance				86,544.00
580 Travel				193.00
<b>Total Other Purchased Services</b>				<b>\$86,737.00</b>
<b>600 Supplies</b>				
610 General Supplies	83,056.00	83,331.00		166,387.00
620 Energy				500,918.00
<b>Total Supplies</b>	<b>\$83,056.00</b>	<b>\$83,331.00</b>		<b>\$667,305.00</b>
<b>700 Property</b>				
762 Capitalized Equipment - Replacement				18,667.00
<b>Total Property</b>				<b>\$18,667.00</b>
<b>800 Other Objects</b>				
810 Dues and Fees				3,272.00
<b>Total Other Objects</b>				<b>\$3,272.00</b>
<b>Total 2600 Operation and Maintenance of Plant Services</b>	<b>\$83,056.00</b>	<b>\$83,331.00</b>		<b>\$2,790,786.00</b>

LEA : 127041503 Big Beaver Falls Area SD

Printed 10/25/2018 2:52:26 PM

Page - 25 of 40

## General Fund (10)

## 2620 Operation of Buildings Services

ElementarySecondaryFederalTotal100 Personnel Services – Salaries

100 Personnel Services – Salaries

979,836.00

**Total Personnel Services – Salaries****\$979,836.00**200 Personnel Services – Employee Benefits

210 Group Insurance – Contracted Provider

244,691.00

220 Social Security Contributions

75,015.00

230 PSERS Retirement Contributions

318,041.00

250 Unemployment Compensation

1,050.00

260 Workers' Compensation

14,172.00

270 Group Insurance – Self-Insurance

18,052.00

299 All Other Employee Benefits

544.00

**Total Personnel Services – Employee Benefits****\$671,565.00**300 Purchased Professional and Technical Services

330 Other Professional Services

4,590.00

**Total Purchased Professional and Technical Services****\$4,590.00**400 Purchased Property Services

410 Cleaning Services

41,041.00

420 Utility Services

79,496.00

460 Extermination Services

3,347.00

**Total Purchased Property Services****\$123,884.00**500 Other Purchased Services

523 General Property and Liability Insurance

86,544.00

580 Travel

193.00

**Total Other Purchased Services****\$86,737.00**600 Supplies

610 General Supplies

83,056.00

83,331.00

166,387.00

620 Energy

495,989.00

**Total Supplies****\$83,056.00****\$83,331.00****\$662,376.00**700 Property

762 Capitalized Equipment - Replacement

18,667.00

**Total Property****\$18,667.00**800 Other Objects

810 Dues and Fees

3,272.00

**Total Other Objects****\$3,272.00****Total 2620 Operation of Buildings Services****\$83,056.00****\$83,331.00****\$2,550,927.00**

LEA : 127041503 Big Beaver Falls Area SD

Printed 10/25/2018 2:52:26 PM

Page - 26 of 40

## General Fund (10)

## 2630 Care and Upkeep of Grounds Services

ElementarySecondaryFederalTotal600 Supplies

620 Energy

(3,750.00)

**Total Supplies****(\$3,750.00)****Total 2630 Care and Upkeep of Grounds Services****(\$3,750.00)**

LEA : 127041503 Big Beaver Falls Area SD

Printed 10/25/2018 2:52:26 PM

Page - 27 of 40

## General Fund (10)

## 2640 Care and Upkeep of Equipment Services

ElementarySecondaryFederalTotal400 Purchased Property Services

430 Repairs and Maintenance Services

179,754.00

**Total Purchased Property Services****\$179,754.00****Total 2640 Care and Upkeep of Equipment Services****\$179,754.00**

LEA : 127041503    Big Beaver Falls Area SD

Printed 10/25/2018 2:52:26 PM

General Fund (10)

2650 Vehicle Operation and Maintenance Services (Other Than Student Transportation Vehicles)	<u>Elementary</u>	<u>Secondary</u>	<u>Federal</u>	<u>Total</u>
400 <u>Purchased Property Services</u>				
430 Repairs and Maintenance Services				6,632.00
<b>Total Purchased Property Services</b>				<b>\$6,632.00</b>
600 <u>Supplies</u>				
620 Energy				8,679.00
<b>Total Supplies</b>				<b>\$8,679.00</b>
<b>Total 2650 Vehicle Operation and Maintenance Services (Other Than Student Transportation Vehicles)</b>				<b>\$15,311.00</b>



LEA : 127041503 Big Beaver Falls Area SD

Printed 10/25/2018 2:52:26 PM

Page - 29 of 40

## General Fund (10)

## 2660 Safety and Security Services

ElementarySecondaryFederalTotal300 Purchased Professional and Technical Services

330 Other Professional Services

30,000.00

350 Security / Safety Services

220.00

**Total Purchased Professional and Technical Services****\$30,220.00**400 Purchased Property Services

430 Repairs and Maintenance Services

18,324.00

**Total Purchased Property Services****\$18,324.00****Total 2660 Safety and Security Services****\$48,544.00**

LEA : 127041503 Big Beaver Falls Area SD

Printed 10/25/2018 2:52:26 PM

Page - 30 of 40

## General Fund (10)

## 2700 Student Transportation Services

ElementarySecondaryFederalTotal500 Other Purchased Services

513 Contracted Carriers

1,271,213.00

516 Student Transportation Services From the IU

10,222.00

580 Travel

300.00

**Total Other Purchased Services****\$1,281,735.00****Total 2700 Student Transportation Services****\$1,281,735.00**

LEA : 127041503    Big Beaver Falls Area SD

Printed 10/25/2018 2:52:26 PM

General Fund (10)

2750 Nonpublic Transportation	<u>Elementary</u>	<u>Secondary</u>	<u>Federal</u>	<u>Total</u>
500 <u>Other Purchased Services</u>				
513 Contracted Carriers				1,271,213.00
516 Student Transportation Services From the IU				10,222.00
580 Travel				300.00
Total Other Purchased Services				\$1,281,735.00
Total 2750 Nonpublic Transportation				\$1,281,735.00

LEA : 127041503 Big Beaver Falls Area SD

Printed 10/25/2018 2:52:26 PM

Page - 32 of 40

## General Fund (10)

## 2800 Support Services – Central

	<u>Elementary</u>	<u>Secondary</u>	<u>Federal</u>	<u>Total</u>
<b>100 Personnel Services – Salaries</b>				
100 Personnel Services – Salaries				168,201.00
<b>Total Personnel Services – Salaries</b>				<b>\$168,201.00</b>
<b>200 Personnel Services – Employee Benefits</b>				
210 Group Insurance – Contracted Provider				33,013.00
220 Social Security Contributions				14,540.00
230 PSERS Retirement Contributions				61,613.00
240 Tuition Reimbursement				2,000.00
260 Workers' Compensation				1,550.00
270 Group Insurance – Self-Insurance				1,800.00
<b>Total Personnel Services – Employee Benefits</b>				<b>\$114,516.00</b>
<b>300 Purchased Professional and Technical Services</b>				
340 Technical Services				33,032.00
<b>Total Purchased Professional and Technical Services</b>				<b>\$33,032.00</b>
<b>400 Purchased Property Services</b>				
430 Repairs and Maintenance Services				9,531.00
<b>Total Purchased Property Services</b>				<b>\$9,531.00</b>
<b>500 Other Purchased Services</b>				
530 Communications				55,166.00
549 Other Advertising/Public Relations				2,716.00
580 Travel				643.00
<b>Total Other Purchased Services</b>				<b>\$58,525.00</b>
<b>600 Supplies</b>				
610 General Supplies				187,795.00
650 Supplies & Fees – Technology Related				31,034.00
<b>Total Supplies</b>				<b>\$218,829.00</b>
<b>800 Other Objects</b>				
810 Dues and Fees				120.00
<b>Total Other Objects</b>				<b>\$120.00</b>
<b>Total 2800 Support Services – Central</b>				<b>\$602,754.00</b>

## General Fund (10)

## 2810 Planning, Research, Development and Evaluation Services

	<u>Elementary</u>	<u>Secondary</u>	<u>Federal</u>	<u>Total</u>
<b>100 Personnel Services – Salaries</b>				
100 Personnel Services – Salaries				168,201.00
<b>Total Personnel Services – Salaries</b>				<b>\$168,201.00</b>
<b>200 Personnel Services – Employee Benefits</b>				
210 Group Insurance – Contracted Provider				33,013.00
220 Social Security Contributions				14,540.00
230 PSERS Retirement Contributions				61,613.00
260 Workers' Compensation				1,550.00
270 Group Insurance – Self-Insurance				1,800.00
<b>Total Personnel Services – Employee Benefits</b>				<b>\$112,516.00</b>
<b>300 Purchased Professional and Technical Services</b>				
340 Technical Services				33,032.00
<b>Total Purchased Professional and Technical Services</b>				<b>\$33,032.00</b>
<b>400 Purchased Property Services</b>				
430 Repairs and Maintenance Services				9,531.00
<b>Total Purchased Property Services</b>				<b>\$9,531.00</b>
<b>500 Other Purchased Services</b>				
530 Communications				55,166.00
580 Travel				(92.00)
<b>Total Other Purchased Services</b>				<b>\$55,074.00</b>
<b>600 Supplies</b>				
610 General Supplies				188,923.00
650 Supplies & Fees – Technology Related				31,034.00
<b>Total Supplies</b>				<b>\$219,957.00</b>
<b>Total 2810 Planning, Research, Development and Evaluation Services</b>				<b>\$598,311.00</b>

LEA : 127041503 Big Beaver Falls Area SD

Printed 10/25/2018 2:52:26 PM

Page - 34 of 40

## General Fund (10)

## 2820 Information Services

ElementarySecondaryFederalTotal500 Other Purchased Services

549 Other Advertising/Public Relations

2,716.00

**Total Other Purchased Services****\$2,716.00**600 Supplies

610 General Supplies

(1,158.00)

**Total Supplies****(\$1,158.00)****Total 2820 Information Services****\$1,558.00**

LEA : 127041503 Big Beaver Falls Area SD

Printed 10/25/2018 2:52:26 PM

Page - 35 of 40

## General Fund (10)

2821 Supervision of Information Services	<u>Elementary</u>	<u>Secondary</u>	<u>Federal</u>	<u>Total</u>
500 <u>Other Purchased Services</u>				
549 Other Advertising/Public Relations				2,716.00
<b>Total Other Purchased Services</b>				<b>\$2,716.00</b>
600 <u>Supplies</u>				
610 General Supplies				(1,158.00)
<b>Total Supplies</b>				<b>(\$1,158.00)</b>
<b>Total 2821 Supervision of Information Services</b>				<b>\$1,558.00</b>

LEA : 127041503 Big Beaver Falls Area SD

Printed 10/25/2018 2:52:26 PM

Page - 36 of 40

## General Fund (10)

## 2830 Staff Services

ElementarySecondaryFederalTotal200 Personnel Services – Employee Benefits

240 Tuition Reimbursement

2,000.00

**Total Personnel Services – Employee Benefits****\$2,000.00**500 Other Purchased Services

580 Travel

735.00

**Total Other Purchased Services****\$735.00**600 Supplies

610 General Supplies

30.00

**Total Supplies****\$30.00**800 Other Objects

810 Dues and Fees

120.00

**Total Other Objects****\$120.00****Total 2830 Staff Services****\$2,885.00**



LEA : 127041503 Big Beaver Falls Area SD

Printed 10/25/2018 2:52:26 PM

Page - 37 of 40

## General Fund (10)

## 2834 Staff Development Services – Non-Instructional, Certified Staff Only

	<u>Elementary</u>	<u>Secondary</u>	<u>Federal</u>	<u>Total</u>
500 <u>Other Purchased Services</u>				
580 Travel				735.00
<b>Total Other Purchased Services</b>				<b>\$735.00</b>
600 <u>Supplies</u>				
610 General Supplies				30.00
<b>Total Supplies</b>				<b>\$30.00</b>
800 <u>Other Objects</u>				
810 Dues and Fees				120.00
<b>Total Other Objects</b>				<b>\$120.00</b>
<b>Total 2834 Staff Development Services – Non-Instructional, Certified Staff Only</b>				<b>\$885.00</b>

LEA : 127041503    Big Beaver Falls Area SD

Printed 10/25/2018 2:52:26 PM

General Fund (10)

2836 Staff Development Services – Non-Instructional, Non-Certified Staff Only	<u>Elementary</u>	<u>Secondary</u>	<u>Federal</u>	<u>Total</u>
200 <u>Personnel Services – Employee Benefits</u>				
240 Tuition Reimbursement				2,000.00
<b>Total Personnel Services – Employee Benefits</b>				<b>\$2,000.00</b>
<b>Total 2836 Staff Development Services – Non-Instructional, Non-Certified Staff Only</b>				<b>\$2,000.00</b>

LEA : 127041503 Big Beaver Falls Area SD

Printed 10/25/2018 2:52:26 PM

Page - 39 of 40

## General Fund (10)

## 2900 Other Support Services

ElementarySecondaryFederalTotal500 Other Purchased Services

595 IU Payments By Withholding

7,388.00

**Total Other Purchased Services****\$7,388.00****Total 2900 Other Support Services****\$7,388.00**

LEA : 127041503 Big Beaver Falls Area SD

Printed 10/25/2018 2:52:26 PM

Page - 40 of 40

General Fund (10)

2910 Support Services Not Listed Elsewhere In the 2000 Series

Elementary

Secondary

Federal

Total

500 Other Purchased Services

595 IU Payments By Withholding

7,388.00

**Total Other Purchased Services**

**\$7,388.00**

**Total 2910 Support Services Not Listed Elsewhere In the 2000 Series**

**\$7,388.00**

LEA : 127041503 Big Beaver Falls Area SD

Printed 10/25/2018 2:52:30 PM

Page - 1 of 3

**General Fund (10)****3000 Operation of Non-Instructional Services****Total****100 Personnel Services – Salaries**

100 Personnel Services – Salaries

243,102.00

**Total Personnel Services – Salaries****\$243,102.00****200 Personnel Services – Employee Benefits**

210 Group Insurance – Contracted Provider

20,733.00

220 Social Security Contributions

18,567.00

230 PSERS Retirement Contributions

72,794.00

250 Unemployment Compensation

597.00

260 Workers' Compensation

3,500.00

270 Group Insurance – Self-Insurance

1,150.00

**Total Personnel Services – Employee Benefits****\$117,341.00****300 Purchased Professional and Technical Services**

330 Other Professional Services

2,390.00

340 Technical Services

24,188.00

350 Security / Safety Services

20,931.00

**Total Purchased Professional and Technical Services****\$47,509.00****400 Purchased Property Services**

410 Cleaning Services

24,550.00

440 Rentals

30,336.00

**Total Purchased Property Services****\$54,886.00****500 Other Purchased Services**

510 Student Transportation Services

46,105.00

520 Insurance – General

6,300.00

580 Travel

3,697.00

**Total Other Purchased Services****\$56,102.00****600 Supplies**

610 General Supplies

88,258.00

620 Energy

568.00

**Total Supplies****\$88,826.00****800 Other Objects**

810 Dues and Fees

8,140.00

860 Grants To Municipal and Community Service Organizations

10,000.00

**Total Other Objects****\$18,140.00****Total 3000 Operation of Non-Instructional Services****\$625,906.00**

LEA : 127041503 Big Beaver Falls Area SD

Printed 10/25/2018 2:52:30 PM

Page - 2 of 3

**General Fund (10)****3200 Student Activities****Elementary****Secondary****Federal****Total****100 Personnel Services – Salaries**

100 Personnel Services – Salaries

235,422.00

**Total Personnel Services – Salaries****\$235,422.00****200 Personnel Services – Employee Benefits**

210 Group Insurance – Contracted Provider

20,733.00

220 Social Security Contributions

17,984.00

230 PSERS Retirement Contributions

72,794.00

250 Unemployment Compensation

597.00

260 Workers' Compensation

3,500.00

270 Group Insurance – Self-Insurance

1,150.00

**Total Personnel Services – Employee Benefits****\$116,758.00****300 Purchased Professional and Technical Services**

330 Other Professional Services

2,390.00

340 Technical Services

24,188.00

350 Security / Safety Services

20,931.00

**Total Purchased Professional and Technical Services****\$47,509.00****400 Purchased Property Services**

410 Cleaning Services

24,550.00

440 Rentals

30,336.00

**Total Purchased Property Services****\$54,886.00****500 Other Purchased Services**

510 Student Transportation Services

46,105.00

520 Insurance – General

6,300.00

580 Travel

3,697.00

**Total Other Purchased Services****\$56,102.00****600 Supplies**

610 General Supplies

78,010.00

620 Energy

568.00

**Total Supplies****\$78,578.00****800 Other Objects**

810 Dues and Fees

8,140.00

**Total Other Objects****\$8,140.00****Total 3200 Student Activities****\$597,395.00**

LEA : 127041503 Big Beaver Falls Area SD

Printed 10/25/2018 2:52:30 PM

Page - 3 of 3

## General Fund (10)

## 3300 Community Services

ElementarySecondaryFederalTotal100 Personnel Services – Salaries

100 Personnel Services – Salaries

7,680.00

**Total Personnel Services – Salaries****\$7,680.00**200 Personnel Services – Employee Benefits

220 Social Security Contributions

583.00

**Total Personnel Services – Employee Benefits****\$583.00**600 Supplies

610 General Supplies

10,248.00

10,248.00

**Total Supplies****\$10,248.00****\$10,248.00**800 Other Objects

860 Grants To Municipal and Community Service Organizations

10,000.00

**Total Other Objects****\$10,000.00****Total 3300 Community Services****\$10,248.00****\$28,511.00**

## General Fund (10)

## 4000 Facilities Acquisition, Construction and Improvement Services

400 Purchased Property Services

450 Construction Services

**Total Purchased Property Services****Total 4000 Facilities Acquisition, Construction and Improvement Services**Total

265,842.00

**\$265,842.00****\$265,842.00**



LEA : 127041503 Big Beaver Falls Area SD

Printed 10/25/2018 2:52:32 PM

Page - 2 of 2

## General Fund (10)

## 4600 Existing Building Improvement Services

ElementarySecondaryFederalTotal400 Purchased Property Services

450 Construction Services

265,842.00

**Total Purchased Property Services****\$265,842.00****Total 4600 Existing Building Improvement Services****\$265,842.00**

LEA : 127041503 Big Beaver Falls Area SD

Printed 10/25/2018 2:52:34 PM

Page - 1 of 4

## General Fund (10)

## 5000 Other Expenditures and Financing Uses

Total800 Other Objects

830 Interest

588,763.00

880 Refunds of Prior Years' Receipts

(9.00)

**Total Other Objects****\$588,754.00**900 Other Uses of Funds

910 Redemption of Principal

1,246,466.00

**Total Other Uses of Funds****\$1,246,466.00****Total 5000 Other Expenditures and Financing Uses****\$1,835,220.00**

LEA : 127041503 Big Beaver Falls Area SD

Printed 10/25/2018 2:52:34 PM

Page - 2 of 4

## General Fund (10)

## 5100 Debt Service / Other Expenditures and Financing Uses

ElementarySecondaryFederalTotal800 Other Objects

830 Interest

588,763.00

880 Refunds of Prior Years' Receipts

(9.00)

**Total Other Objects****\$588,754.00**900 Other Uses of Funds

910 Redemption of Principal

1,246,466.00

**Total Other Uses of Funds****\$1,246,466.00****Total 5100 Debt Service / Other Expenditures and Financing Uses****\$1,835,220.00**

LEA : 127041503 Big Beaver Falls Area SD

Printed 10/25/2018 2:52:34 PM

Page - 3 of 4

## General Fund (10)

## 5110 Debt Service

ElementarySecondaryFederalTotal800 Other Objects

830 Interest

588,763.00

**Total Other Objects****\$588,763.00**900 Other Uses of Funds

910 Redemption of Principal

1,246,466.00

**Total Other Uses of Funds****\$1,246,466.00****Total 5110 Debt Service****\$1,835,229.00**

LEA : 127041503    Big Beaver Falls Area SD

Printed 10/25/2018 2:52:34 PM

General Fund (10)

5130 Refund of Prior Year Revenues / Receipts	<u>Elementary</u>	<u>Secondary</u>	<u>Federal</u>	<u>Total</u>
800 <u>Other Objects</u>				
880 Refunds of Prior Years' Receipts				(9.00)
<b>Total Other Objects</b>				<b>(9.00)</b>
<b>Total 5130 Refund of Prior Year Revenues / Receipts</b>				<b>(9.00)</b>

LEA : 127041503 Big Beaver Falls Area SD

Printed 10/25/2018 2:52:37 PM

Page - 1 of 2

	<u>General Fund(10)</u>	<u>Public Purpose Trust(27)</u>	<u>Other Compt Approved (28)</u>	<u>Athletic / Activity(29)</u>	<u>Capital Reserve (690, 1850)(31)</u>
<b>1000 Instruction</b>					
1100 Regular Programs - Elementary / Secondary	11,680,646.00				
1200 Special Programs - Elementary / Secondary	3,638,412.00				
1300 Vocational Education	680,426.00				
1400 Other Instructional Programs - Elementary / Secondary	330,198.00				
1500 Nonpublic School Programs	39,403.00				
1800 Pre-Kindergarten	328,387.00				
<b>Total Instruction</b>	<b>\$16,697,472.00</b>				
<b>2000 Support Services</b>					
2100 Support Services - Students	1,189,550.00				
2200 Support Services - Instructional Staff	149,444.00				
2300 Support Services - Administration	1,959,066.00				
2400 Support Services - Pupil Health	331,125.00				
2500 Support Services - Business	466,768.00				
2600 Operation and Maintenance of Plant Services	2,790,786.00				
2700 Student Transportation Services	1,281,735.00				
2800 Support Services - Central	602,754.00				
2900 Other Support Services	7,388.00				
<b>Total Support Services</b>	<b>\$8,778,616.00</b>				
<b>3000 Operation of Non-Instructional Services</b>					
3200 Student Activities	597,395.00				
3300 Community Services	28,511.00				
<b>Total Operation of Non-Instructional Services</b>	<b>\$625,906.00</b>				
<b>4000 Facilities Acquisition, Construction and Improvement Services</b>					
4600 Existing Building Improvement Services	265,842.00				
<b>Total Facilities Acquisition, Construction and Improvement Services</b>	<b>\$265,842.00</b>				
<b>5000 Other Expenditures and Financing Uses</b>					
5100 Debt Service / Other Expenditures and Financing Uses	1,835,220.00				
<b>Total Other Expenditures and Financing Uses</b>	<b>\$1,835,220.00</b>				
<b>TOTAL ACTUAL EXPENDITURES &amp; OTHER FINANCING USES</b>	<b>\$28,203,056.00</b>				

	<u>Capital Reserve (1431)(32)</u>	<u>Other Capital Projects Fund(39)</u>	<u>Debt Service(40)</u>	<u>Permanent(90)</u>	<u>Total</u>
<b>1000 Instruction</b>					
1100 Regular Programs - Elementary / Secondary					11,680,646.00
1200 Special Programs - Elementary / Secondary					3,638,412.00
1300 Vocational Education					680,426.00
1400 Other Instructional Programs - Elementary / Secondary					330,198.00
1500 Nonpublic School Programs					39,403.00
1800 Pre-Kindergarten					328,387.00
<b>Total Instruction</b>					<b>\$16,697,472.00</b>
<b>2000 Support Services</b>					
2100 Support Services - Students					1,189,550.00
2200 Support Services - Instructional Staff					149,444.00
2300 Support Services - Administration					1,959,066.00
2400 Support Services - Pupil Health					331,125.00
2500 Support Services - Business					466,768.00
2600 Operation and Maintenance of Plant Services					2,790,786.00
2700 Student Transportation Services					1,281,735.00
2800 Support Services - Central					602,754.00
2900 Other Support Services					7,388.00
<b>Total Support Services</b>					<b>\$8,778,616.00</b>
<b>3000 Operation of Non-Instructional Services</b>					
3200 Student Activities					597,395.00
3300 Community Services					28,511.00
<b>Total Operation of Non-Instructional Services</b>					<b>\$625,906.00</b>
<b>4000 Facilities Acquisition, Construction and Improvement Services</b>					
4600 Existing Building Improvement Services					265,842.00
<b>Total Facilities Acquisition, Construction and Improvement Services</b>					<b>\$265,842.00</b>
<b>5000 Other Expenditures and Financing Uses</b>					
5100 Debt Service / Other Expenditures and Financing Uses					1,835,220.00
<b>Total Other Expenditures and Financing Uses</b>					<b>\$1,835,220.00</b>
<b>TOTAL ACTUAL EXPENDITURES &amp; OTHER FINANCING USES</b>					<b>\$28,203,056.00</b>

LEA : 127041503    Big Beaver Falls Area SD

Printed 10/25/2018 2:52:42 PM

PSERS Salary Data (Salary Data should relate to the General Fund only)

Amount	Description	Amount
	Total Salary Base for salaries subject to PSERS withholding	9,961,855.06
	Total Federally Funded salaries subject to PSERS withholding	586,830.96

Title I Expenditure Data

Amount	Description	Amount
	Expenditures Funded with Current Title I Funds	1,160,146.59
	Expenditures Funded with Carry over Title I Funds	13,650.11
Total Title I Expenditure Data		\$1,173,796.70



Benefits for Staff Relative to Collective  
Bargaining Agreements

	OBJECT	COVERED	NOT COVERED	TOTAL
10 General Fund				
	211 Medical Insurance	2,417,682.80	168,074.21	2,585,757.01
	212 Dental Insurance			
	215 Eye Care Insurance			
	216 Prescription Insurance			
	271 Self-Insurance Medical Benefits			
	272 Self-Insurance Dental Benefits	115,288.31	8,014.70	123,303.01
	275 Self-Insurance Eye Care Benefits	6,380.44	443.56	6,824.00
	276 Self-Insurance Prescription Benefits			
	<b>FUND TOTAL</b>	<b>\$2,539,351.55</b>	<b>\$176,532.47</b>	<b>\$2,715,884.02</b>
50 Enterprise Fund				
	211 Medical Insurance	39,724.41	2,761.59	42,486.00
	212 Dental Insurance			
	215 Eye Care Insurance			
	216 Prescription Insurance			
	271 Self-Insurance Medical Benefits			
	272 Self-Insurance Dental Benefits	3,272.50	227.50	3,500.00
	275 Self-Insurance Eye Care Benefits	280.50	19.50	300.00
	276 Self-Insurance Prescription Benefits			
	<b>FUND TOTAL</b>	<b>\$43,277.41</b>	<b>\$3,008.59</b>	<b>\$46,286.00</b>
60 Internal Service Fund	No Self Insurance data to report			
	211 Medical Insurance			
	212 Dental Insurance			
	215 Eye Care Insurance			
	216 Prescription Insurance			
	271 Self-Insurance Medical Benefits			
	272 Self-Insurance Dental Benefits			
	275 Self-Insurance Eye Care Benefits			
	276 Self-Insurance Prescription Benefits			
	<b>FUND TOTAL</b>			
<b>Total of All Funds</b>		<b>\$2,582,628.96</b>	<b>\$179,541.06</b>	<b>\$2,762,170.02</b>

LEA : 127041503 Big Beaver Falls Area SD

Printed 10/25/2018 2:52:44 PM

Page - 1 of 1

Function	Special Education (Prior Year)	Nonspecial Education (Prior Year)	Total (Prior Year)	Special Education (Current Year)	Nonspecial Education (Current Year)	Total (Current Year)
2120 Guidance Services		653,529.00	653,529.00		689,222.00	689,222.00
2140 Psychological Services	131,451.00		131,451.00	128,829.00		128,829.00
2150 Speech Pathology and Audiology Services						
2160 Social Work Services						
2260 Instruction and Curriculum Development Services		15,414.00	15,414.00			
2350 Legal and Accounting Services	8,191.00	8,191.00	16,382.00	10,149.00	10,148.00	20,297.00
2420 Medical Services						
2440 Nursing Services	26,693.00	240,240.00	266,933.00	33,112.00	298,013.00	331,125.00
2700 Student Transportation Services	491,844.00	737,767.00	1,229,611.00	512,694.00	769,041.00	1,281,735.00
<b>Total</b>	<b>\$658,179.00</b>	<b>\$1,655,141.00</b>	<b>\$2,313,320.00</b>	<b>\$684,784.00</b>	<b>\$1,766,424.00</b>	<b>\$2,451,208.00</b>

LEA : 127041503 Big Beaver Falls Area SD

Printed 10/25/2018 2:52:45 PM

Page - 1 of 3

## (PRINCIPAL AMOUNTS ONLY)

GOVERNMENTAL FUNDS/ ACTIVITIES

	Short-Term Borrowing	General Obligation Bonds/Notes	Authority Building Obligations	Other Long-Term Debt	Other Post- Employment Benefits (OPEB)	Compensated Absences	Net Pension Liability	Total
1. Debt at Beginning of Fiscal Year		18,692,800.00		180,298.35	256,093.00	201,862.00	42,800,221.00	62,131,274.35
2. Additional Debt Incurred During Year					1,253,907.00	7,931.00		1,261,838.00
3. Retirements and Repayments		1,219,200.00		35,196.22			1,047,920.00	2,302,316.22
4. Debt at End of Fiscal Year		17,473,600.00		145,102.13	1,510,000.00	209,793.00	41,752,301.00	61,090,796.13
5. Accreted Interest at End Of Fiscal Year								
6. Total Debt and Accreted Interest		17,473,600.00		145,102.13	1,510,000.00	209,793.00	41,752,301.00	61,090,796.13
7. Current Portion P&I - Due within 1 year		1,809,858.76		41,701.80			3,723,843.00	5,575,403.56
8. Interest Paid during current fiscal year		588,262.65		1,841.67				590,104.32

## (PRINCIPAL AMOUNTS ONLY)

PROPRIETARY FUNDS

	Short-Term Borrowing	General Obligation Bonds/Notes	Authority Building Obligations	Other Long-Term Debt	Other Post- Employment Benefits (OPEB)	Compensated Absences	Net Pension Liability	Total
1. Debt at Beginning of Fiscal Year						18,495.00	1,305,779.00	1,324,274.00
2. Additional Debt Incurred During Year						520.00		520.00
3. Retirements and Repayments							90,080.00	90,080.00
4. Debt at End of Fiscal Year						19,015.00	1,215,699.00	1,234,714.00
5. Accreted Interest at End Of Fiscal Year								
6. Total Debt and Accreted Interest						19,015.00	1,215,699.00	1,234,714.00
7. Current Portion P&I - Due within 1 year							108,426.85	108,426.85
8. Interest Paid during current fiscal year								

LEA : 127041503 Big Beaver Falls Area SD

Printed 10/25/2018 2:52:45 PM

Page - 2 of 3

## Total Principal and Interest Payments Made by Your School - All Funds

Function	Fund	Principal (910)	Principal (920)	Interest (830)	Total (Principal +Interest)	Misc Other Uses (990)
5110	10 General Fund	1,246,466.00		588,763.00	1,835,229.00	
5110	20 Special Revenue Funds					
5110	30 Capital Projects Funds					
5110	40 Debt Service Fund					
5110	90 Permanent Fund					
5120	10 General Fund					
5120	20 Special Revenue Funds					
5120	30 Capital Projects Funds					
5120	40 Debt Service Fund					
<b>Total Debt Payments - Governmental Funds</b>		<b>\$1,246,466.00</b>		<b>\$588,763.00</b>	<b>\$1,835,229.00</b>	
Function	Fund	Principal (910)	Principal (920)	Interest (830)	Total (Principal +Interest)	
5110	50 Enterprise Fund					
5110	60 Internal Service Fund					
5120	50 Enterprise Fund					
5120	60 Internal Service Fund					
<b>Total Debt Payments - Proprietary Funds</b>						

LEA : 127041503 Big Beaver Falls Area SD

Printed 10/25/2018 2:52:45 PM

Page - 3 of 3

<u>Debt Details</u> <u>Governmental Funds/ Activities</u>		Principal Amounts Only				Current Portion Due Within One Year (Principal and Interest)	Interest Paid During Fiscal Year
Debt Category	Debt Issue Date (MM/YYYY)	Debt at Beginning of Fiscal Year	Additions	Reductions / Repayments	Debt at End of Fiscal Year		
General Obligation Bonds/Notes – CIB	01/2015	9,970,000.00		25,000.00	9,945,000.00	296,200.00	270,700.00
General Obligation Bonds/Notes – CIB	10/2014	4,890,000.00		5,000.00	4,885,000.00	167,281.26	162,281.26
General Obligation Bonds/Notes – CIB	06/2012	2,105,000.00		1,000,000.00	1,105,000.00	1,042,227.50	42,227.50
General Obligation Bonds/Notes – CIB	09/2010	982,800.00		109,200.00	873,600.00	191,100.00	81,803.89
General Obligation Bonds/Notes – CIB	03/2005	745,000.00		80,000.00	665,000.00	113,050.00	31,250.00
Other Long Term Debt/Liabilities		180,298.35		35,196.22	145,102.13	41,701.80	1,841.67
Compensated Absences		201,862.00	7,931.00		209,793.00		
Other Post-Employment Benefits (OPEB)		256,093.00	1,253,907.00		1,510,000.00		
Net Pension Liability		42,800,221.00		1,047,920.00	41,752,301.00	3,723,843.00	
<b>Totals for Debt Entered:</b>		<b>\$62,131,274.35</b>	<b>\$1,261,838.00</b>	<b>\$2,302,316.22</b>	<b>\$61,090,796.13</b>	<b>\$5,575,403.56</b>	<b>\$590,104.32</b>

<u>Bond Details</u> <u>Proprietary Funds</u>		Principal Amounts Only				Current Portion Due Within One Year (Principal and Interest)	Interest Paid During Fiscal Year
Debt Category	Debt Issue Date (MM/YYYY)	Debt at Beginning of Fiscal Year	Additions	Reductions / Repayments	Debt at End of Fiscal Year		
Compensated Absences		18,495.00	520.00		19,015.00		
Net Pension Liability		1,305,779.00		90,080.00	1,215,699.00	108,426.85	
<b>Totals for Debt Entered:</b>		<b>\$1,324,274.00</b>	<b>\$520.00</b>	<b>\$90,080.00</b>	<b>\$1,234,714.00</b>	<b>\$108,426.85</b>	

LEA : 127041503 Big Beaver Falls Area SD

Printed 10/25/2018 2:52:48 PM

Page - 1 of 2

**Food Service / Cafeteria Operations Fund (51)****3000 Operation of Non-Instructional Services****Total****100 Personnel Services – Salaries**

100 Personnel Services – Salaries

368,023.00

**Total Personnel Services – Salaries****\$368,023.00****200 Personnel Services – Employee Benefits**

210 Group Insurance – Contracted Provider

42,847.00

220 Social Security Contributions

27,938.00

230 PSERS Retirement Contributions

86,057.00

250 Unemployment Compensation

350.00

260 Workers' Compensation

6,566.00

270 Group Insurance – Self-Insurance

3,800.00

299 All Other Employee Benefits

690.00

**Total Personnel Services – Employee Benefits****\$168,248.00****400 Purchased Property Services**

430 Repairs and Maintenance Services

11,211.00

490 Other Purchased Property Services

7,000.00

**Total Purchased Property Services****\$18,211.00****500 Other Purchased Services**

599 Other Miscellaneous Purchased Services

705,595.00

**Total Other Purchased Services****\$705,595.00****600 Supplies**

610 General Supplies

71,521.00

620 Energy

25,907.00

**Total Supplies****\$97,428.00****700 Property**

740 Depreciation

9,878.00

**Total Property****\$9,878.00****800 Other Objects**

890 Miscellaneous Expenditures

1,972.00

**Total Other Objects****\$1,972.00****Total 3000 Operation of Non-Instructional Services****\$1,369,355.00**

LEA : 127041503 Big Beaver Falls Area SD

Printed 10/25/2018 2:52:48 PM

Page - 2 of 2

**Food Service / Cafeteria Operations Fund (51)****3100 Food Services**ElementarySecondaryFederalTotal**100 Personnel Services – Salaries**

100 Personnel Services – Salaries

368,023.00

**Total Personnel Services – Salaries****\$368,023.00****200 Personnel Services – Employee Benefits**

210 Group Insurance – Contracted Provider

42,847.00

220 Social Security Contributions

27,938.00

230 PSERS Retirement Contributions

86,057.00

250 Unemployment Compensation

350.00

260 Workers' Compensation

6,566.00

270 Group Insurance – Self-Insurance

3,800.00

299 All Other Employee Benefits

690.00

**Total Personnel Services – Employee Benefits****\$168,248.00****400 Purchased Property Services**

430 Repairs and Maintenance Services

11,211.00

490 Other Purchased Property Services

7,000.00

**Total Purchased Property Services****\$18,211.00****500 Other Purchased Services**

599 Other Miscellaneous Purchased Services

705,595.00

**Total Other Purchased Services****\$705,595.00****600 Supplies**

610 General Supplies

71,521.00

620 Energy

25,907.00

**Total Supplies****\$97,428.00****700 Property**

740 Depreciation

9,878.00

**Total Property****\$9,878.00****800 Other Objects**

890 Miscellaneous Expenditures

1,972.00

**Total Other Objects****\$1,972.00****Total 3100 Food Services****\$1,369,355.00**

	<u>Food Service(51)</u>	<u>Child Care Operations(52)</u>	<u>Other Enterprise(58)</u>	<u>Internal Service(60)</u>	<u>Total</u>
<b>3000 <u>Operation of Non-Instructional Services</u></b>					
3100 Food Services	1,369,355.00				1,369,355.00
<b>Total Operation of Non-Instructional Services</b>	<b>\$1,369,355.00</b>				<b>\$1,369,355.00</b>
<b>TOTAL ACTUAL EXPENDITURES &amp; OTHER FINANCING USES</b>	<b>\$1,369,355.00</b>				<b>\$1,369,355.00</b>



## Big Beaver Falls Area SD

## Schedule of Paid Leave

Fiscal Year: 2017-2018

Account Number	Organization Chart Component	Last Name	First Name	Middle Initial	Job Title	Unused leave payment	Unrestricted Indirect Employee	Unrestricted Direct Employee	Restricted Indirect Employee	Restricted Direct Employee	Restricted Rate Adjustment
2620		Atkins	Barbara		Custodian	\$1,495.00	X		X		
3100		Bozic	Roberta		Cafe	\$128.00		X		X	
2511	Payroll Processing	Summers	Mary		Confidential Secretary-Payroll	\$8,253.00	X			X	\$8,253.00
3100		Wilt	Diane		Secretary	\$1,200.00		X		X	
2380		Welsh	Carol		Secretary	\$6,180.00		X		X	
<b>TOTAL</b>							<b>\$9,748.00</b>	<b>\$7,508.00</b>	<b>\$1,495.00</b>	<b>\$15,761.00</b>	<b>\$8,253.00</b>

## Big Beaver Falls Area SD

## Schedule of Subcontracts/Subawards for each Department

Fiscal Year: 2017-2018

Fund Code	Account Code	Object Code	Organization Name	Contract Identifier	Original Subgrant/Subaward Amount	Fiscal Year Expenditure	\$25,000 Fiscal Year Contract Expenditures in Base	Fiscal Year Contract Expenditures in excess of \$25,000 Total Exclusions
10	1200	322	Intermediate Unit #27	2017-2018	\$614,522.82	\$614,522.82	\$25,000.00	\$589,522.82
10	1200	323	Beaver County Rehab Center	2017-2018-2	\$44,055.63	\$44,055.63	\$25,000.00	\$19,055.63
10	1200	322	The Education Center at Watson	2017-2018-3	\$62,503.22	\$62,503.22	\$25,000.00	\$37,503.22
			<b>Total 1200 Special Programs – Elementary / Secondary</b>		<b>\$721,081.67</b>	<b>\$721,081.67</b>	<b>\$75,000.00</b>	<b>\$646,081.67</b>
			<b>TOTAL</b>		<b>\$721,081.67</b>	<b>\$721,081.67</b>	<b>\$75,000.00</b>	<b>\$646,081.67</b>