



5th Grade Curriculum Night

2024-2025

Team 5th Grade

Ms. Murk

- 10th year teaching 5th grade at Muir
- Loves cooking, reading, long walks, traveling and my dogs Logan & Maverick

Mr.
Kanehen

- 19th year teaching 5th grade at Muir
- Loves woodworking, grilling, Seattle sports, and spending time with family



The team at Camp Orkila

PBIS & Class Philosophy

P.B.I.S. [Link to Framework](#)

- Positive and based on continual growth
 - The power of YET
 - Error vs. Mistake
 - Trying again for more success
- JME - R.O.A.R.
 - *Respectful*
 - *On task*
 - *Appropriate*
 - *Responsible*
- Gotcha Tix

Schedules



Weekly



Annual

Miss Murk's Weekly Schedule

Time	Monday	Tuesday	Wednesday	Thursday	Friday
8:35	Arrival	Arrival	Arrival	Arrival	Arrival
8:40	P.E.	Music	P.E.	Library	Music
9:15	SEL	SEL	SEL	SEL	SEL
9:40	Math	Math	Math	Math	Math
10:15	Recess	Recess		Recess	Recess
10:30	Math	Math		Math	Math
11:10	Reading	Reading	Reading	Reading	Reading
12:40	Lunch/Recess	Lunch/Recess	Lunch/Recess	Lunch/Recess	Lunch/Recess
1:35	Read-Aloud	Read-Aloud	Dismissal @ 1:40pm	Read-Aloud	Read-Aloud
1:45	W.I.N.N.	W.I.N.N.		W.I.N.N.	W.I.N.N.
2:15	Writing	Writing		Writing	Writing
2:35	S.T.E.A.M./SS	S.T.E.A.M./SS		S.T.E.A.M./SS	S.T.E.A.M./SS
3:05	Jobs/Pack-Up	Jobs/Pack-Up		Jobs/Pack-Up	Jobs/Pack-Up
3:10	Dismissal	Dismissal		Dismissal	Dismissal

Mr. Kanehen's Weekly Schedule

Time	Monday	Tuesday	Wednesday	Thursday	Friday
8:35	Arrival	Arrival	Arrival	Arrival	Arrival
8:40	Music	P.E.	Library	Music	P.E.
9:15	SEL	SEL	SEL	SEL	SEL
9:40	Math	Math	Math	Math	Math
10:15	Recess	Recess		Recess	Recess
10:30	Math	Math		Math	Math
11:10	Reading	Reading	Reading	Reading	Reading
12:40	Lunch/Recess	Lunch/Recess	Lunch/Recess	Lunch/Recess	Lunch/Recess
1:35	Read-Aloud	Read-Aloud	Dismissal @ 1:40	Read-Aloud	Read-Aloud
1:45	W.I.N.N.	W.I.N.N.		W.I.N.N.	W.I.N.N.
2:15	Writing	Writing		Writing	Writing
2:35	S.T.E.A.M./SS	S.T.E.A.M./SS		S.T.E.A.M./SS	S.T.E.A.M./SS
3:05	Jobs/Pack-Up	Jobs/Pack-Up		Jobs/Pack-Up	Jobs/Pack-Up
3:10	Dismissal	Dismissal		Dismissal	Dismissal

Weekly Schedules

C.C.S.S., N.G.S.S, WA Learning Standards

Core curriculum, teaching and
learning aligned with WA
OSPI





Social & Emotional Learning

CASEL Framework

[Link to Framework](#)

- [Purposeful People](#)
 - Daily with classroom teacher
 - Connecting character with SEL
- [Second Step](#)
 - With school counselors

Reading –
Primary Focus:
Comprehension



Reading C.C.S.S.

[Link to Standards](#)

- Wonders
- Read Aloud Book
- Lexia

Wonders

Weekly Routines:

- Spelling
- Vocabulary
- Phonics / Word Work
- **Comprehension Skills**
- Comprehension Strategies
- Small Group Instruction





Writing –

Primary Focus:
Organization of Thinking

Writing C.C.S.S.

[Link to Standards](#)

- LWSD Curriculum
- Step Up To Writing Supports
- Integration with Content
- Typing Club

Writing Units



Informational/Explanatory



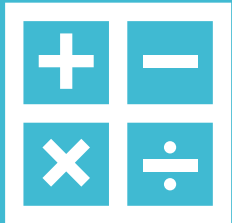
Persuasive/Opinion



Narrative/Creative

Math-

Primary Focus:
Operations & Practices



Math C.C.S.S.

[Link to Standards](#)

- Illustrative Mathematics
- Dreambox
- Math for Today

Illustrative Math Units



Volume



Fractions



Place Value & Decimal Operations



Multiplication & Division



Shapes & Coordinate



Science-

Primary Focus:
Processes & Design

N.G.S.S.

[Link to Standards](#)

- Amplify
- STEAM (STEM)
 - **Science Technology Engineering Art Math**
- NewsELA

Science Units



Matter



Motion



Environment



Space

Social Studies –
Primary Focus: Civics &
early U.S. History



WA State Learning Standards [*Link to Standards*](#)

- InquirED
- iCivics

Social Studies Units of Study



Civics



History



Geography



Social Studies



Technology-

Primary Focus: Word processing and digital citizenship

WA State Technology Standards [Link to Standards](#)

- **Major intersectionality and incorporation with tasks**
- Common Sense – Digital Citizenship
- Microsoft Suite
- Code.org

LWSD Technology Code of Conduct

<https://www.lwzd.org/services/student-services/student-rights-and-responsibilities>

5th Grade JME Student Technology Use & Accountability Contract



The rules below are a summary of the Lake Washington School District Student policies:

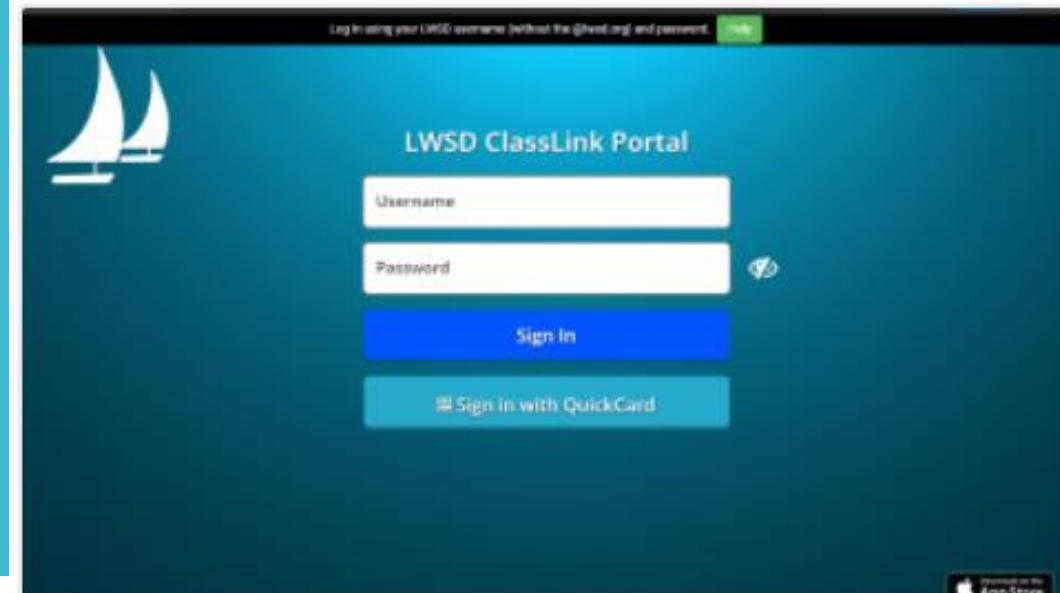
- I understand that the use of district technology is a privilege and if I do not follow the Student Acceptable Use Procedures, then I will be denied the use of district technology in addition to consequences.
- **I will read the Technology Code of Conduct before using a computer at school.**
- I will have permission from a teacher or instructional assistant before using a computer at school.
- I will never give my password to anyone else and I will never use anyone else's password.
- I will only visit websites as directed by my teacher.
- I will only use applications and tools when instructed by my teacher and stay only on those tools.
- I will only use my district provided email account for school related work.
- I will not change any computer settings without permission from a staff member.
- I will use district technology equipment appropriately and respectfully (hardware and software).
- I will not bully or communicate disrespectfully with pictures, words, or other media using district technology.

Class Link

- Single Sign On Tool

- Access using district log-in

- From the ClassLink LaunchPad, students are automatically logged into a number of district-provided digital tools so they no longer need to remember multiple usernames and passwords.



Art-
Primary Focus: Visual
Arts



Washington State Art Standards [Link to Standards](#)

- Deep Space Sparkle
- Art Docent
- JME National Heritage
Month Alignment

Health-

Primary Focus: Puberty
and HIV/AIDS



WA State Health Education Standards [Link to Standards](#)

- KNOW Curriculum
 - Letter will be sent home with more information in May
- H.I.V./A.I.D.S Prevention



WEEKLY REPORT

EACH FRIDAY



DREAMBOX & LEXIA

*GOAL OF 30-60 MINUTES A
WEEK*

Additional
Practices

Weekly Report

This section will be for any out of the ordinary comments as well as a space for feedback from families. Most weeks this section will be blank; thus, do not be surprised when you see it empty. Anything significant I will share via email or telephone. Feel free to stay in contact with whatever means is most convenient.

Fifth Grade Weekly Report

Student: _____ Date: _____

Something I **learned or re-learned** this week was _____

My proudest act of **respect** this week was: _____

Class Assignments	Tuned In	Missing
Reading Log		
Lexia Minutes		
Dreambox Minutes		

Teacher/Family Comments:



Family Signature _____



Weekly Newsletter on Fridays

Past week learning, Upcoming events
Important announcements



Occasional phone calls –Parent Square

Communication

Parent Square



- Lake Washington School District uses the ParentSquare platform to simplify school communications and provide options for families for how they want to receive information (email, text and/or app notifications).
- [ParentSquare - Lake Washington School District \(lwsd.org\)](https://www.lwsd.org/parentsquare)

Snack



Donations needed – individually packaged



Healthy snacks encouraged. We drink water in the classroom.



Mon/Tues/Wed/Thurs/Fri @ 10:30 am

Birthdays

Community Circle Celebrations
School-wide policy of no birthday
treats in classroom



5th Grade
Outdoor
Education



ORCAS ISLAND

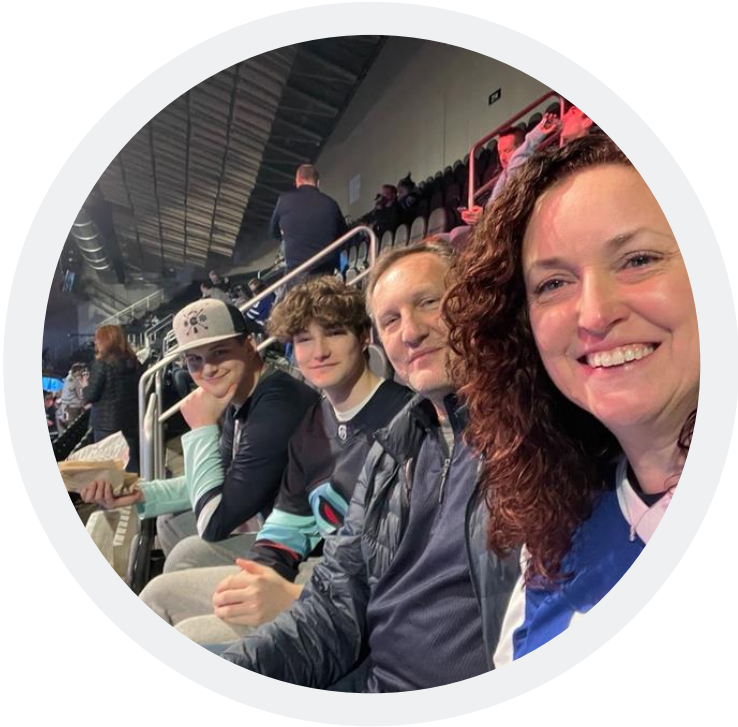


MAY 7-9

MEET THE SCHOOL

COUNSELORS!

Ms. Schroeder. Full-time School counselor at JME. In my spare time I love going to hockey and baseball games with my family, and I love musical theatre especially at 5th Ave and the Paramount. I live at home with my husband, two sons, and two crazy cats.



Ms. Powers! Bonus School Counselor at JME. I work with Ms. Schroeder to help ALL students at JME. You will see me on Monday's! I love reading, going to the beach, crafting and spending time with my family. I live at home with my husband Jordan, daughter Lucy and cat ROY!



WHAT DOES AN ELEMENTARY SCHOOL COUNSELOR DO?



1

SUPPORT

- Academic, social, and emotional development of all of the students here at JME



2

EDUCATE

- Classroom SEL lessons
- Student small groups
- JME community resources



3

ENCOURAGE

- Students
- Families
- Teachers
- JME community

IN SCHOOLS AND BEYOND.

equity . opportunity . collaboration .



My role here at JME is to support the whole student.

Basic Needs

- Food
- Clothes, shoes, schools supplies
- Housing
- MV Students

One on One Support

- Setting & Respecting Boundaries
- Conflict Resolution

Small Groups

- Lunch Bunch

Lila
Room 2303

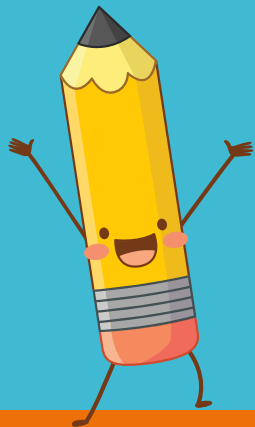




John Muir Elementary

- Safety Net
- Information

- September 2024



Purpose of Safety Net!

Support students in partnership with general education teachers in literacy so they can meet or exceed grade level standards

Safety Net instruction never replaces core instruction with their teacher, it serves as extra instruction for students who qualify





Meet the Team



Julie Palmer
jupalmer@lwsd.org

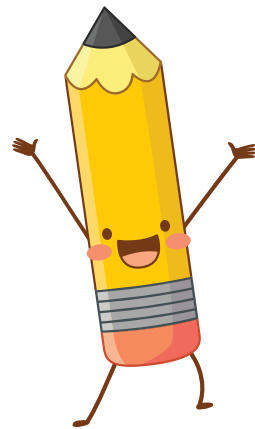


Michelle Vallene
mvallene@lwsd.org



Ellen Barber
ebarber@lwsd.org

Who is served in safety net?



We serve students who are not meeting district and state academic standards in reading.

Our Reading testing will be through FastBridge, which replaced DIBELS

Safety Net groups will begin when testing has been completed by their classroom teacher.

Parents will be contacted if testing data indicates that their student will benefit from receiving extra support in Safety Net groups.

Safety Net groups will not interrupt or replace classroom instruction, they act as an extra support in addition to core curriculum

Accelerated Programs Testing

FastBridge

Fall:

- Administered by classroom teacher
- 85% or above invited to apply to take the screener (CogAT)
- **Regardless of Fall FB score, anyone can and must apply** – only scores at or above 85% will receive an outreach letter

Application

- Completed online by families
- **Window closes on 10/20 at 11:59 PM**

Cognitive Screener (CogAT)

- K5HC Teacher
- 30 minutes-1 hour
- Students with qualifying score will move on to the NNAT and IOWA

Cognitive Test (NNAT)

- K5HC Teacher
- 30 minutes timed

Academic Test (IOWA)

- K5HC Teacher
- 1.5 – 3.5 hours

WINTER FastBridge

- Classroom Teacher

Questions? Visit the Accelerated Programs Website

<https://www.lwsd.org/programs-and-services/accelerated-programs>

Multilingual Learner (ML) Program

We provide English instruction and support to multilingual students in all grades focusing on ...

 listening

 speaking

 reading

 writing

The type and level of English support is determined by students' WIDA test scores and other assessments given by classroom and intervention teachers.

Questions about English support can be directed to the Multilingual Teachers:



Domini
Dean
ddean@lwsd.org



Bella Chavez
ichavez@lwsd.org



JME Specialist

Physical Education

Mr. Rothenberg
jrothenberg@lwsd.org

Library

Ms. Kehrli
stkehrli@lwsd.org

Music

Ms. Metz
kmetz@lwsd.org



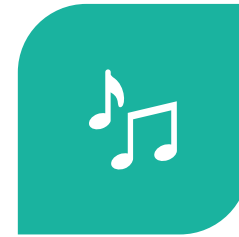
SING!



**PLAY
INSTRUMENTS!**



**READ
RHYTHMS!**



READ MUSIC!



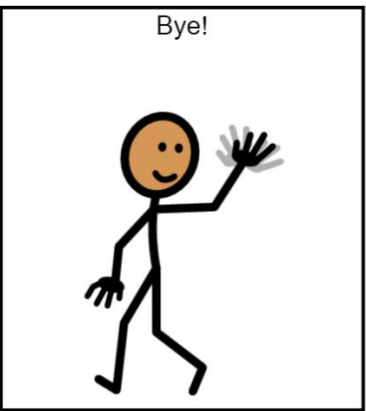
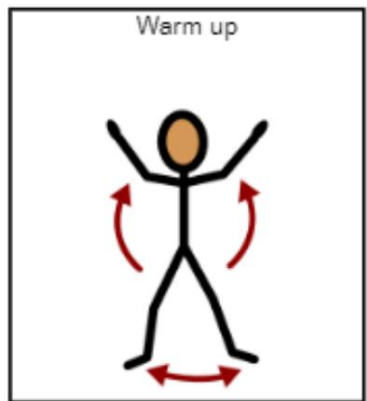
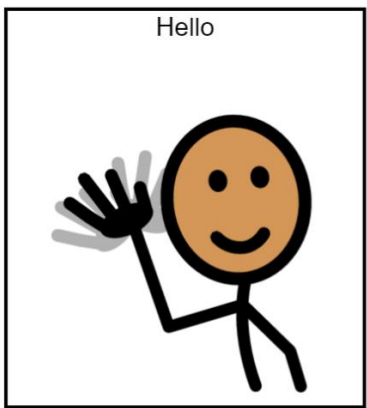
AND...DANCE!!!

Music is 2 times a week!

We will learn how to...

PE Class 2 times each week

Be ready to move by wearing safe running shoes!





JME library

Mrs. Kehrli
stkehrli@lwsd.org

Library Program Information:

- **All grades visit the library for 30 minutes a week.**
- Students listen to stories, learn about digital citizenship, and how to explore their information needs.
- **Grades K-1** Check out one book a week for their classrooms.
- **Grades 2-3** Check out 2 books to take home. The books are due 1 week later.
- **Grades 4-5** Check out 2 books to take home. The books are due 2 weeks later. **5th graders in good standing can increase the number of books to take home after Winter Break.**

The Amazing Reading Challenge

All 5th graders can participate in ARC-
The Amazing Reading Challenge.

Informational letters and permission
forms will go out to all 5th grade
families, later in the fall.

