

# USD 475 Geary County Schools Request for Proposals

## Dark Fiber Request for Proposals

## SCOPE OF SERVICES

### Section 1: Introduction

Geary County Schools USD 475 is requesting proposals for leased lit fiber and leased dark fiber services for delivery of wide area network (WAN) services to the district. Service is expected to originate at the district hub which is located at:

Mary E Devin Center  
123 N. Eisenhower Dr.  
Junction City, KS 66441

All locations with addresses are listed in the attached pricing sheet. The new service is being planned to begin on or around January 1, 2026.

### Timeline

The timeline for the proposal is:

- December 13, 2024, 12:00 pm CT: RFP Responses Due  
Please email [karldearmond@usd475.org](mailto:karldearmond@usd475.org) with your response to the RFP.
- December 1, 2025  
Recommendation to the Board of Education (tentative)

### Rights of the District

- Reject any and /or all proposals received in response to this RFP.
- Respond to inquiries for clarification purposes only and/or to request clarification, if necessary.
- Waive minor irregularities if the District determines that waiver would be in its best interest and would not result in an unfair advantage for other proposers and potential proposers.
- Select a proposal other than that with the lowest cost

### Use of subcontracting

The proposer shall, in all cases, serve as the sole point of contact with regard to any subcontracted services, equipment, and supplies, and shall ensure that any and all subcontractors comply with the terms of this RFP and subsequent agreement(s). Responsibility for all work shall be the sole responsibility of the proposer.

### General Terms

All contractual agreements shall be subject to, governed by, and construed according to the laws of the State of Kansas.

A contract will serve as the award instrument against this RFP.

### Insurance Requirements

The respondent will maintain at all times while under contract with the District workers compensation insurance for all of its employees as required by law.

## Section 2: Service Requests

1. Geary County Schools USD 475 is seeking bids for one service which is leased dark fiber solution that includes maintenance as part of the monthly recurring charge.
2. Network Design and Construction Routes
  - a. Respondents should include maps with preferred routes between sites as part of the proposal response.
  - b. Respondents maps should include all fiber splice points, hand wells, and junction locations.
  - c. Respondents shall include all fiber circuit IDs to the District.
  - d. We are not advocating or mandating any network design or construction route. Those decisions are at the discretion of the vendor.

## Section 3: Solution Specifications

Building Source	Building Destination	Leased Dark Strands
Mary E Devin Center	New Early Childhood Center	4 Strands

1. Leased Dark Fiber
  - a. Geary County Schools USD 475 must have four (4) strands (2 pair) of single mode fiber from the hub to the new Early Childhood Center capable of 100 Gbps connectivity over a single pair.
  - b. Contract options are requested for 60- and 120-month terms of service or co-termed to any existing contract with USD 475.
  - c. Each respondent is required to complete the attached pricing sheet with this RFP.
    - i. Special construction and monthly recurring cost are required to be broken out and listed separately.
    - ii. Respondents are free to propose alternate pricing terms provided they have also included pricing in the requested format.
    - iii. No increased pricing will be allowed during the term of the quoted special construction and MRC rate in each pricing cell of the matrix.
  - d. The provider will make all reasonable efforts to ensure 99.99% network availability of all leased fiber strands.
  - e. All solutions require maintenance as part of the MRC subject to the following terms and the terms found in Section 4:
    - i. Respondent shall maintain the applicable fiber seven days per week, twenty-four hours per day.
    - ii. In the case that maintenance is subcontracted out to a third party, the respondent must hold and manage the subcontract and is ultimately responsible for the SLA.
    - iii. It is assumed that the dark fiber network is part of a more comprehensive fiber infrastructure of the service provider. The respondent will include only the portion of maintenance that is required to support Geary County Schools USD 475 fiber segments versus overall network maintenance.

- iv. Vendor stated commitment is to respond to any outage within two (2) hours and thereafter proceed to correct the malfunction with reasonable diligence.
- v. The respondent should include an overview of maintenance practices including:
  - 1. Routine maintenance and inspection
  - 2. Scheduled maintenance windows and scheduling practices for planned outages
  - 3. Marker and handhole inspection and repair
  - 4. Handling of unscheduled outages and customer problem reports
  - 5. What service level agreement is included and what alternative service levels may be available at additional cost
  - 6. What agreements are in place with applicable utilities and utility contractors for emergency restoration
  - 7. Repair of fiber breaks and mean time to repair
  - 8. Replacement of damaged fiber and fiber that no longer meets specifications
  - 9. Post repair testing
  - 10. Policies for customer notification regarding maintenance
  - 11. Process for changing procedures, including customer notification practices
  - 12. Process for moves, adds, and changes
  - 13. Process for responding to locate requests

#### Section 4: Service Level Agreement

- 1. Network operations center: Solution will provide customer support functions including problem tracking, resolution, and escalation support management on a 24x7x365 basis. Customer has the right and is encouraged to call concerning any problems that may arise relative to its connection with vendor provided services.
- 2. Trouble reporting and response: Upon interruption, degradation or loss of service, Customer may contact Vendor by defined method with a response based on trouble level. Upon contact from the Customer, the Vendor support team will initiate an immediate response to resolve any Customer issue. Customer will receive rapid feedback on trouble resolution, including potential resolution time.
- 3. Escalation: If service has not been restored in a timely manner, or the Customer does not feel that adequate attention has been allocated, the Customer can escalate the trouble resolution by request. A list of escalation contacts will be provided when the implementation schedule is completed.
- 4. Resolution: The Customer will be notified immediately once the problem is resolved and will be asked for verbal closure of the incident.
- 5. Trouble reporting, escalation, and resolution: A detailed trouble reporting, escalation and resolution plan will be provided to the district.
- 6. Measurement: Time starts from the time the Customer contacts vendor and identifies the problem. Credits per site for outages should be the following:
  - a. Less than three hours: No Credit
  - b. Greater than three hours and less than five hours: 5%
  - c. Greater than five hours and less than ten hours: 10%

- d. Greater than ten hours and less than 16 hours: 15%
  - e. Greater than 16 hours and less than 24 hours: 30%
  - f. Greater than 24 hours: 50%
- 7. Reports: Upon request, an incident report will be made available to the Customer within five (5) working days of resolution of the trouble.
- 8. Link performance per segment: The service will maintain the proposed link performance throughout the term of the contract.
- 9. Historical uptime: Provide aggregate uptime statistics for your proposed service in the geographic area encompassing Geary County Schools USD 475.

## Section 5: General Terms for All Proposals

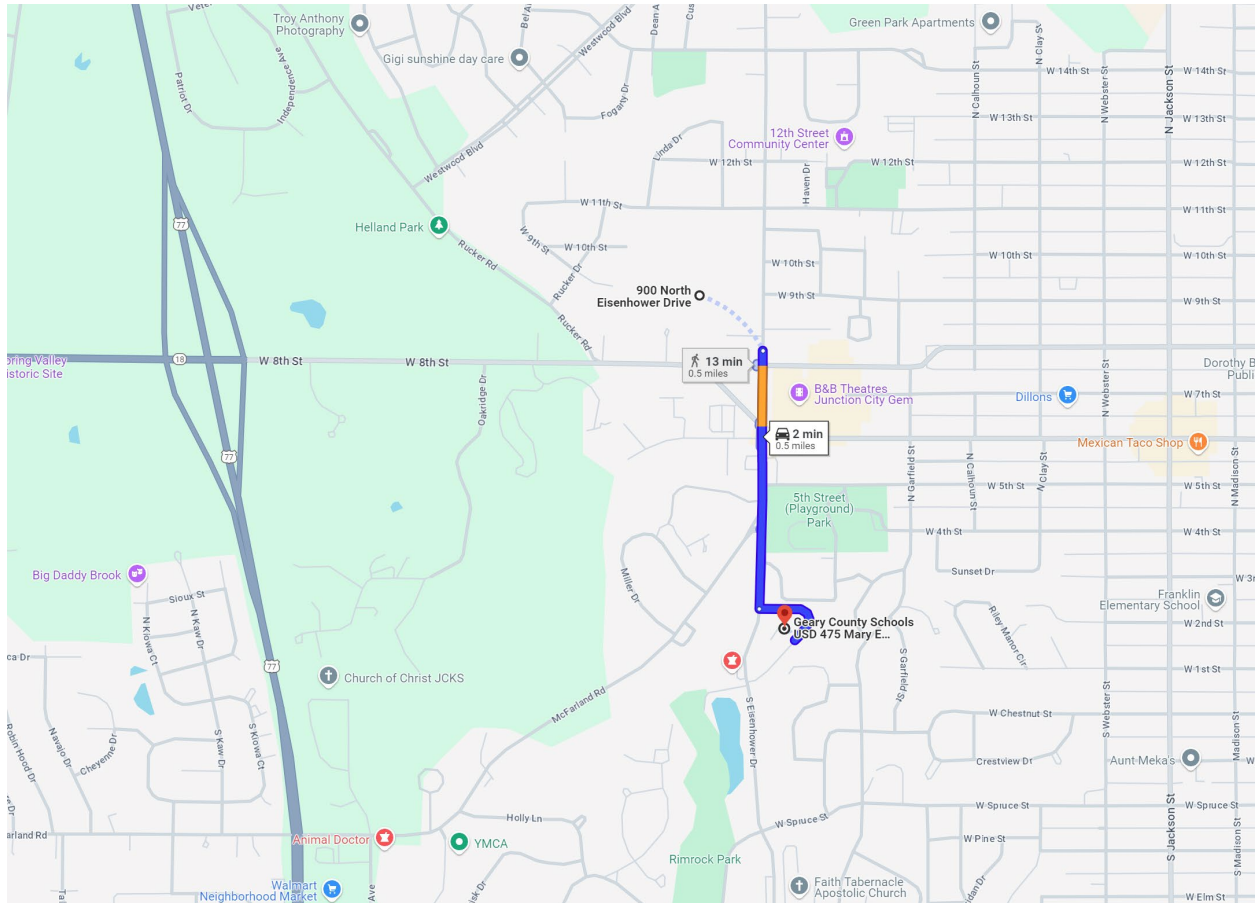
- 1. Failure to include any requested information noted as required by the respondent is grounds for disqualification.
- 2. All costs required to deliver the proposed solution must be included in the bid. By submitting a bid, the respondent certifies that it has engineered a full solution including all monthly recurring charges, all installation charges and all special construction costs. Costs added to the quote after the respondent has submitted their bid are solely the responsibility of the respondent and not Geary County Schools USD 475.
- 3. Description of Proposal
  - a. Respondent will provide a description of their proposal for all services and solutions.
  - b. Description will include an overview of the proposal, any deviations from the requested architecture, design or requirements, assumptions made, and other detail Geary County Schools USD 475 may find useful or necessary (or could differentiate the solution from a competing proposal).
- 4. Reselling and subcontracting
  - a. If, at any point following the bid submission, any changes from the third party alter the costs or significantly change scope of proposed service then Geary County Schools USD 475 will not be liable for the cost increase and reserves the right to disqualify the bid and cancel any signed contracts without penalty.
- 5. Timeline
  - a. For each response, respondents must include a timeline for bringing the site online. The new Early Childhood Center shall be online by January 1, 2026.
- 6. Demarcation
  - a. All solutions must terminate service or infrastructure in the demarcation point at each address specified in the pricing sheet.
  - b. Solutions bringing service to the property line but not to the demarcation point are not acceptable.
  - c. Respondent must specify specific demarcation setup included in base fees.
- 7. Network Diagram
  - a. For each response, respondents must include a network diagram displaying the paths to be used to serve each endpoint.
  - b. Diagrams must show if circuits are routed through any aggregation hubs, equipment, or third-party facilities between hub site and each endpoint.
    - i. If this detailed information cannot be supplied, then at a minimum the quantity of each must be supplied in order to provide a picture of potential latency.

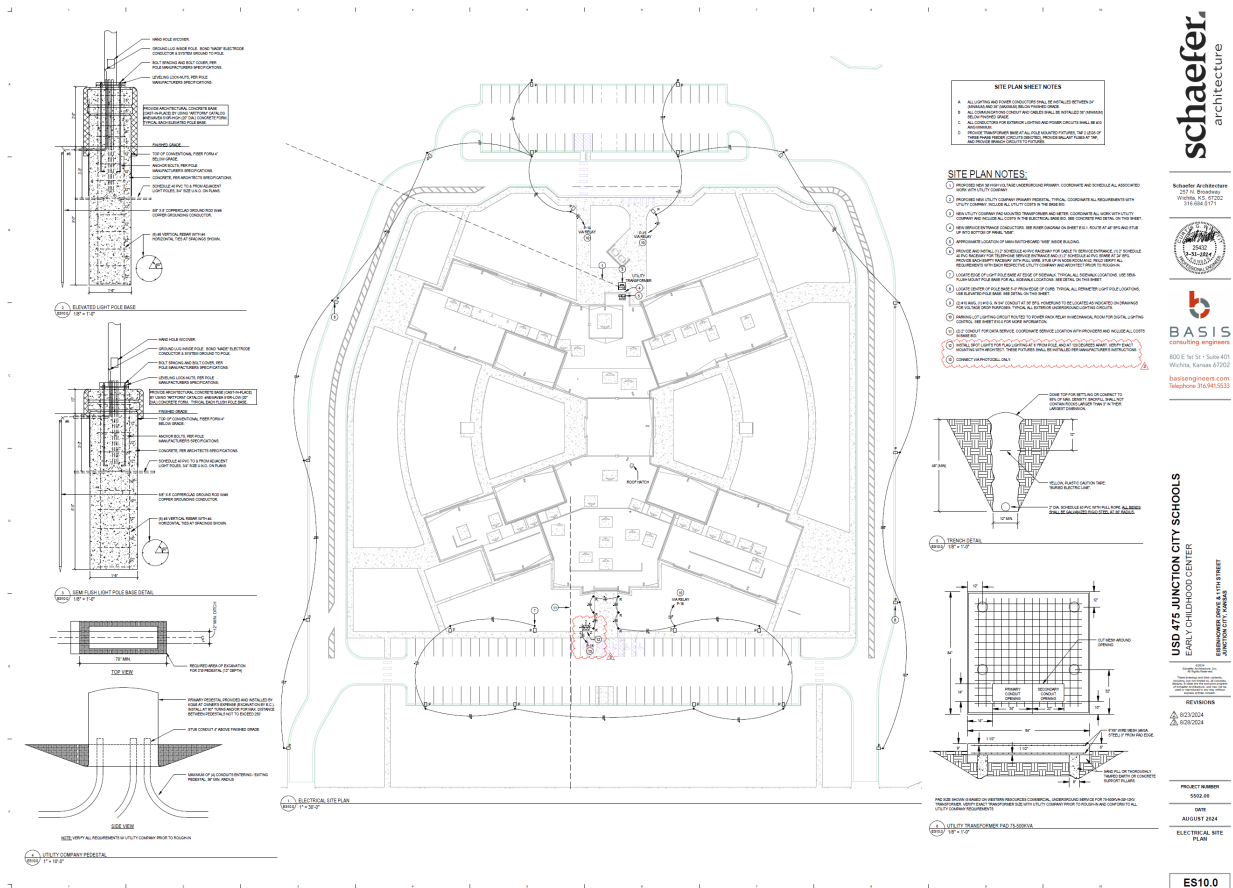
8. References
  - a. For each response, the respondent must provide three references from current or recent customers (preferably K-12) with projects equivalent to the size of Geary County Schools USD 475.
9. Required Notice to Proceed and Funding Availability
  - a. Geary County Schools USD 475 will follow the purchasing policies of Geary County Schools USD 475 Board of Education.
  - b. The implementation of any associated contracts resulting from this competitive bid process will be dependent on the district's issuance of a written Notice to Proceed.

## Section 7: Evaluation Criteria

1. Leased Dark Fiber
  - a. Total Costs: 30%
  - b. Complete bid submission: 10%
  - c. Ability to support requirements of this RFP: 25%
  - d. Proposed contract terms and conditions: 15%
  - e. Service reliability and dedicated infrastructure: 10%
  - f. References: 5%
  - g. Compatibility with existing USD 475 infrastructure: 5%
2. Criteria Explanation
  - a. Total Costs: the total cost of ownership for the eligible components of the proposed service. Total cost of ownership takes into account all one-time and recurring costs.
  - b. Complete bid submission: Bids concisely address Geary County Schools USD 475's requirements, as set forth in the RFP, and do not contain a significant amount of corporate boilerplate marketing information
  - c. Ability to support requirements of this RFP: proposed solution clearly meets Geary County Schools USD 475's requirements and needs while showing experience in the field. Furthermore, the bid demonstrates the ability to grow our network over time.
  - d. Proposed contract terms and conditions: Proposed contract has flexibility and terms desired by Geary County Schools USD 475
  - e. Service reliability and dedicated infrastructure: Solution provides dedicated infrastructure for Geary County Schools USD 475's service with no shared equipment or routing of traffic through aggregation hubs.
  - f. Provider references: response included K-12 references that were similar in size and scope
  - g. Compatibility with existing network infrastructure: proposed equipment is easily compatible with the existing equipment used by Geary County Schools USD 475.

## New Early Childhood Center Location





**schaefer**  
architecture

Schaefer Architects  
227 N. Broadway  
Wichita, KS 67202  
913.833.3171

**BASIS**  
consulting engineers

800 E 1st St., Suite 401  
Wichita, Kansas 67202  
basisengineers.com  
Telephone 316.943.3333

**USD 475 JUNCTION CITY SCHOOLS**  
EARLY CHILDHOOD CENTER  
JUNCTION CITY, KANSAS

REVISIONS  
A 6/20/2024  
B 6/20/2024

PROJECT NUMBER  
5555.00  
DATE  
AUGUST 2024  
ELECTRICAL SITE  
PLAN

ES10.0



**Pricing Sheet**

	<b>Non Recurring Costs</b>	<b>Monthly Recurring Costs</b>	<b>Special Construction Costs</b>	<b>Term Length</b>
<b>Early Childhood Center (4 strands)</b>				