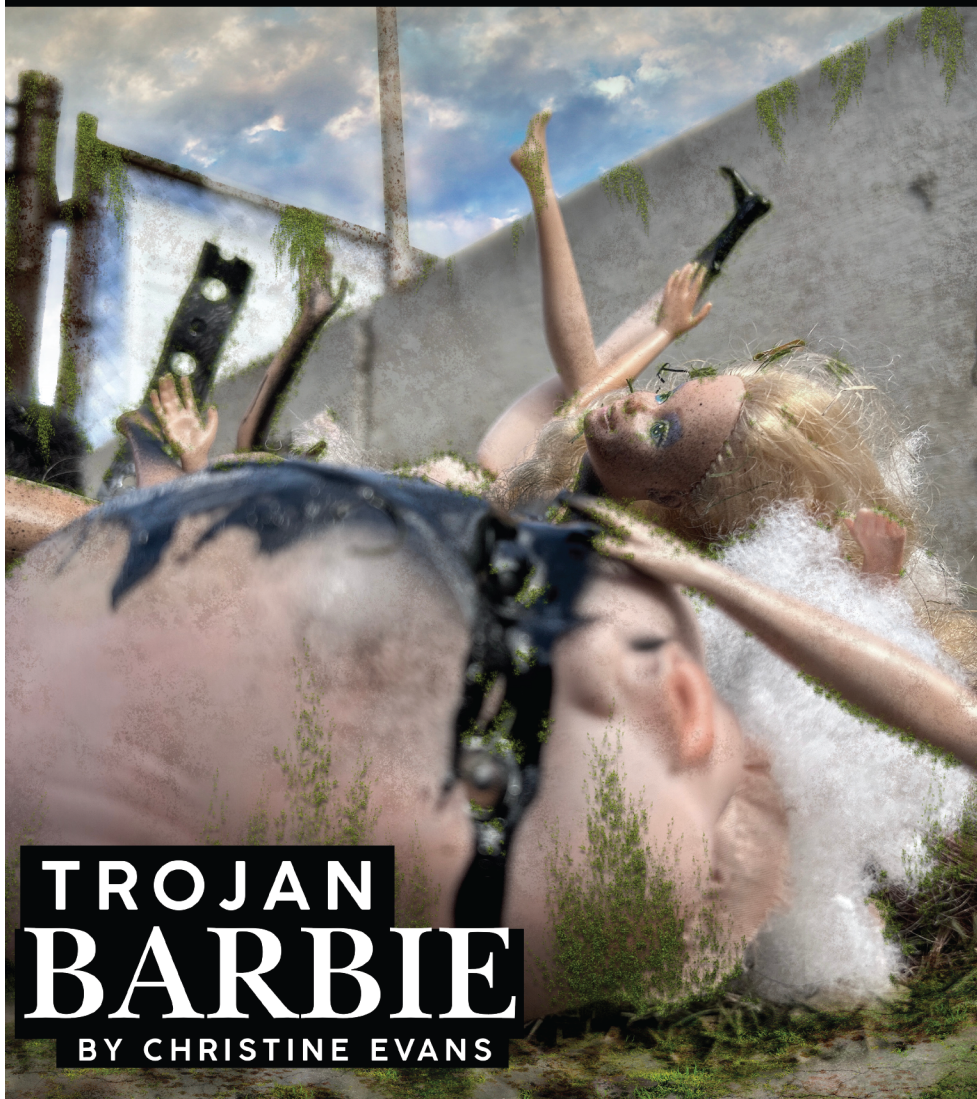


The Moreau Catholic High School  
Visual--Performing Arts Department

PRESENTS



# TROJAN BARBIE

BY CHRISTINE EVANS

TEVES THEATRE  
MOREAU CATHOLIC

DIRECTED BY  
PATRICK ALPARONE '00

\$15 GENERAL  
ADMISSION  
\$10 SENIORS  
\$5 MCHS  
STUDENTS

OCTOBER 25 - NOVEMBER 3, 2024

"TROJAN BARBIE" IS PRESENTED BY ARRANGEMENT WITH CONCORD THEATRICALS  
ON BEHALF OF SAMUEL FRENCH, INC. [WWW.CONCORDTHEATRICALS.COM](http://WWW.CONCORDTHEATRICALS.COM)

## ABOUT THE PLAY

*Trojan Barbie* is described by playwright Christine Evans as a car-crash encounter between past and present, based on Euripides' classic tragedy *Trojan Women*. *Trojan Women* depicts the aftermath of the Trojan War and its effect on the surviving women of Troy. Euripides is one of the famous Athenian playwrights whose works still remain. His plays were often critical of Athens, an aspect that earned him much criticism, and *Trojan Women* is no exception.

The Trojan War was a ten year war between the Greeks and the Trojans. It began when the prince of Troy, Paris (Hecuba's son), abducted Helen of Sparta, wife to King Menelaus. Paris brought Helen to Troy and was soon pursued by the entire Greek army which then laid siege to the city.

The war continued to rage and Paris was killed by the Greeks. With no end in sight Odysseus, a Greek general, came up with the idea of the Trojan Horse. The Greeks hid men inside the horse and then left it as a prize for the Trojans and a symbol of their surrender. The Trojans then brought the horse inside the city and began to celebrate.

Only Cassandra (Hecuba's daughter, sister to Paris), the cursed prophet of Apollo, saw the truth behind the Horse. She tried to warn her people against taking it into the city, but they did not heed her. That night, the Greeks ransacked the city and killed the Trojan king Priam (Hecuba's husband), winning the Trojan War.

Playwright Christine Evans says, "*Trojan Barbie* was inspired by the strange feeling of living in a country waging a war we only experienced through media images and stories. And those images—Biblically ancient villages with garish neon signs; shepherds with AK47s; women weeping over dead children clutching cellphones—evoked the surreal postmodern collision of times that *Trojan Barbie* dramatizes."

Moreau Catholic High School's production of *Trojan Barbie* features a brand new version of the script specifically edited by Evans for high school performers and audiences. This is the world premiere of this version of the play. Christine is a professor of performing arts at Georgetown University and her award-winning plays and operas have been produced in the United States, Australia, Canada, England and Wales. We were honored to welcome her to Moreau Catholic in September 2024 to work with our students on this new adaptation. For more information on Christine, please visit [www.christineevanswriter.com](http://www.christineevanswriter.com).

*Please note that Trojan Barbie features mature themes related to war and violence as well as strong language. Actors will be carrying non-firing replica weapons onstage. Atmospheric haze will be used during this performance.*

## SETTING

Mythic Troy; modern Troy; and Lotte's doll hospital in England

## TIME

The past, folded uneasily into the present.

## CAST

### Trojans

Hecuba.....	Sarah Suero Lopez '25
Understudy for Hecuba .....	Izzy Pereira '27
Polly X.....	Bernadette Gamboa '26
Cassandra.....	Ivanka Menezes '27
Understudy for Cassandra .....	Arshia Singh '26
Andromache.....	Maya Cavestany '25
Clea .....	Hanne Shirriff '26
Esme.....	Amelie Ruiz '27
Zoe .....	MJ Jones '28
Ayla .....	Arshia Singh '26
Evangeline.....	Loren Echaluse '28
Jane.....	Izzy Pereira '27
Ella .....	Abbey Boyle '27

### The Others

Helen.....	Vy Nguyen '27
Lotte .....	Charlotte Cruz '27
Mica .....	Cruz Ferreira '26
Armed Soldier.....	Shubh Sharma '27
George.....	Parker Barr '27
Max.....	Dani Pong '28
Talthybius.....	Avirishi Sharma '27
Menelaus .....	Mayank Sanav '28
Clive .....	Ace Dispo '26
Officer in Blue/Bartender.....	Anthony Cascone '27

## CREW

Stage Manager.....	Mandee Iyer '27
Deck Captains.....	Noah Rocheford '27, Joshua Yegge '26
Assistant Stage Managers.....	Madeline Fang '26, Sydney Lau '28, Qiana Walker '28
Stage Crew.....	Johana Centeno '28, Alexander Sanchez '25
Wardrobe Crew.....	Hawley Lowe '28
Lighting Crew .....	Shaun Elchico '26
Sound Crew .....	Diya Reddy '28

**As a courtesy to others, please turn off all cell phones and electronic devices.  
The taking of photographs or video recording during the performance is strictly prohibited.**

**No food or drink is permitted in Teves Theatre.**

**Trojan Barbie runs approximately 90 minutes with no intermission.**

**PRODUCTION STAFF**

Director ..... Patrick Alparone '00  
Production Manager ..... Heather Radovich '09  
Set Design & Construction ..... Yusuke Soi  
Costume Design ..... Angela Demmel  
Lighting Design ..... Heather Radovich '09  
Master Electrician ..... Jacob Nagel '16  
Sound Design ..... Patrick Alparone '00  
Properties ..... Heather Radovich '09

**SPECIAL THANKS**

Christine Evans, Wil Adajar '94 and Golden State Material Handling, City of Union City Department of Public Works, One Stage Theatre, Moreau Catholic High School's Advancement Department, Charles LeChandrie, Caroline Small, John and Lynn Cascone, Christine and Christopher Cruz, A.J. Ferreira, Colleen Galloway '77, Kristin Hannon '02, Gary Gongwer, Laurie Radovich

**UPCOMING VAPA PERFORMANCES**

*Location:* Teves Theatre, unless noted otherwise

Winter Band Concert ..... December 6, 2024 | 7:00 pm  
Winter Choral Concert ..... December 7, 2024 | 7:00 pm  
St. Clement Church  
Winter Dance Concert: On, Dancer! ..... December 13-14, 2024 | 7:00 pm  
Band Pops Concert ..... March 14, 2025 | 7:00 pm  
Spring Musical: Alice by Heart ..... March 3, 11, 12, 13, 2025 | Various Times  
Band Awards Concert ..... May 2, 2025 | 7:00 pm  
Spring Choral Concert ..... May 3, 2025 | 7:00 pm  
St. Clement Church  
Spring Dance Concert ..... May 9-10, 2025 | 7:00 pm



**MOREAU**  
CATHOLIC HIGH SCHOOL