

# Whole Child Supports Newsletter

November 2024



## “Things to Know About!” with the Director of Whole Child Supports

Greetings!

As we embrace November, our team is excited to share a wealth of resources and opportunities to enhance our commitment to supporting the whole child. Together, we can create nurturing environments where every student thrives.

If you haven't subscribed to our monthly **Mental Wellbeing in Schools Newsletter**, now's the time! It's packed with insights for promoting mental health in our schools and has been getting rave reviews. It's a great tool to supplement this bi-monthly resource.

This month's newsletter includes valuable resources to bolster our social-emotional learning (SEL) efforts, helping us integrate SEL practices into our classrooms. You'll also find career opportunities through Worksource Georgia, guiding our students as they explore future pathways.

Don't miss the upcoming training sessions at RESA, especially the “10 Steps to Becoming a Trauma-Informed and Resilient School” on November 19th and 21st. This is a fantastic opportunity to learn strategies for fostering a supportive school environment.

We also highlight innovative ways to enhance community outreach in our schools, creating stronger connections with families. Lastly, be sure to explore Find Help Georgia, a wonderful resource finder to connect families with local support services.

I hope you find this month's resources inspiring and useful as we work together to support our students holistically. Let's make this November a month of growth and connection!

In Service,

*Michelle Sandrock*

In this newsletter  
you can expect:

“Things to Know  
About!” with the  
Director of  
Whole Child  
Supports

Integrated  
Student  
Supports and  
Services

Expanded and  
Enriched  
Learning Time  
and  
Opportunities

Trainings

Family and  
Community  
Engagement

**Thank you!**

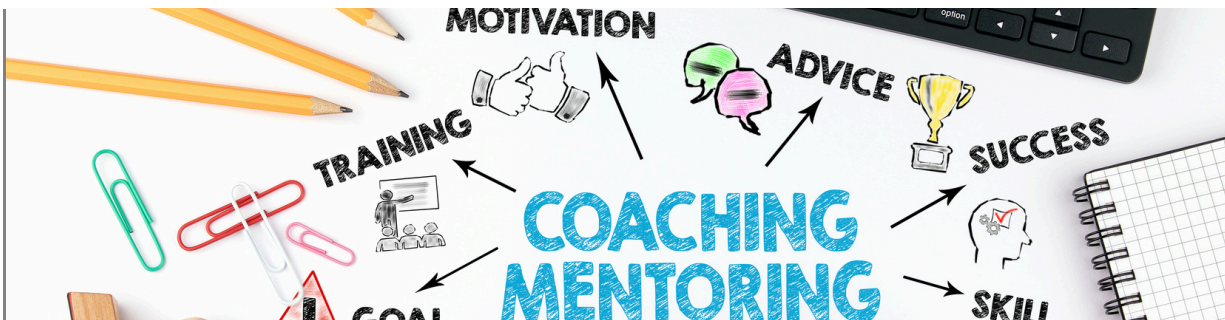


## INTEGRATED STUDENT SUPPORTS AND SERVICES

### SEL within an Integrated Support Systems Model

Your vision for thriving schools emphasizes the importance of creating safe, equitable, and supportive environments that foster student growth. By integrating social-emotional learning (SEL) within a comprehensive integrated student support system, we can equip students with the resilience needed to navigate life's challenges. This holistic approach not only empowers them to address personal and systemic obstacles but also nurtures their ability to empathize and engage meaningfully with their communities.

Investing in effective SEL programming and integrated supports is essential, as it lays the foundation for healthier, more equitable futures. By prioritizing these initiatives, we can enhance students' well-being and, ultimately, benefit society as a whole. This forward-thinking approach recognizes that when students thrive, everyone does. How do you envision implementing these principles in practice? Check out this resource: [Building SEL through ISS](#) for some ideas to help you get started!



### EXPANDED AND ENRICHED LEARNING TIME AND OPPORTUNITIES

#### Unlock Career Opportunities with Worksource Georgia for Atlanta Metro Students

Students in the Atlanta Metro area have an incredible opportunity to jumpstart their careers through the Workforce Innovation and Opportunity Act (WIOA) services provided by Worksource Georgia. By identifying the career center that serves their county or district, students can access a variety of valuable resources to build their future career pathways.

Here's what's available:

- **Paid Internships:** Gain real-world experience and earn while you learn.
- **Apprenticeships:** Train alongside industry professionals in high-demand fields, with hands-on learning to prepare you for the workforce.
- **Post-Secondary Certification Training:** Obtain certifications in growing industries, giving you a competitive edge in the job market.

These services are designed to support students at every step of their journey, from high school to post-secondary education and beyond. Whether you're interested in technology, healthcare, skilled trades, or another field, Worksource Georgia has the tools to help you succeed.

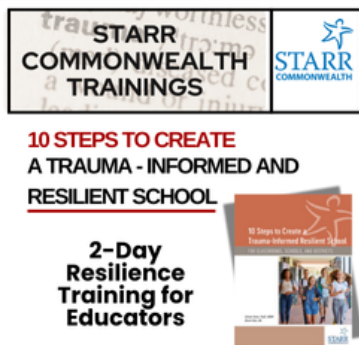
Additionally, ongoing support is available for families, ensuring a holistic approach to education and career development. To learn more about these life-changing opportunities and identify your local career center, visit [Worksource Georgia Services](#).

## TRAININGS TO LOOK OUT FOR:



### YMHFA Training

YMHFA is designed to teach people how to help an adolescent (age 12-18) who is experiencing a MH or addictions challenge or is in crisis. The course introduces mental health challenges for youth, reviews typical adolescent development, & teaches a 5-step action plan for how to help young people.



### Trauma-Informed

In this two-day, foundation-setting learning experience created by Starr Commonwealth, participants are walked, step-by-step, through the 10 steps to create a trauma-informed, resilience-focused school.



### QPR Training

QPR Gatekeeper training is a suicide prevention workshop that teachers participants how to:

- Recognize friends or family at-risk
- Intervene
- Offer referrals and resources



### Restorative Practices

Restorative practices is an emerging social science that studies how to strengthen relationships between individuals as well as social connections within communities.



### A Few Notes To Remember

- Visit [here](#) to learn more about when the trainings are, who should attend, register, and more!
- Any training that is listed is available for facilitation at your school or district. Please reach out to the Whole Child Supports Team to inquire and coordinate a date and time.
- There is a \$25 registration fee for any of the trainings hosted at Metro RESA, so please be aware of that as you register for your desired training opportunity.



## FAMILY AND COMMUNITY ENGAGEMENT

### The Power of Community Outreach in Schools

In today's educational landscape, the importance of community outreach cannot be overstated. Schools are not just places of learning—they are cornerstones of their communities. For Atlanta Metro public schools, a strong outreach strategy is essential to connect educators with the families and neighborhoods they serve.

Community outreach is not only about informing people but building two-way relationships that strengthen bonds between schools and the broader community. A well-planned communication strategy highlights successes, addresses concerns, and rallies support for key initiatives. Regular updates across multiple platforms ensure everyone feels involved.

To serve communities well, schools must understand their perspectives and needs. Tools like surveys or stakeholder interviews provide insights to shape decisions and long-term goals. Engaging directly with the community fosters shared responsibility and trust.

Social media plays a critical role in outreach today. Platforms like Facebook and Twitter offer schools a way to engage with parents, students, and local leaders in real-time. They also provide direct channels for feedback, allowing administrators to address concerns quickly.

Stronger connections between schools and communities are essential for long-term success. For more tips on enhancing community outreach, read this article: [\[Community Outreach: Strengthening School and Community Bonds\]](#).

### Find Help Georgia

Find Help Georgia is an easy way for families to get connected with help, based on a comprehensive directory of local resources.

Help seekers can search by ZIP code, or speak directly with a resource specialist by phone or online chat to locate resources near them. Whether it's financial assistance, food pantries, medical care, child care, job training, and other free or reduced-cost services specific to your area, essential resources can be found here. Visit [findhelpga.org](http://findhelpga.org) to get started!



*Thank you for reading!*

**METRO RESA  
WHOLE CHILD SUPPORTS TEAM**

[www.mresa.org](http://www.mresa.org)

1870 Teasley Drive, SE  
Smyrna, GA 30080