



# G.W. Hewlett High School

PPS/Counseling Newsletter



November 2024

## Dates to Remember:

**November 1st**

End of 1st Marking Period

**November 5th**

Election Day

Schools Closed

**November 8th**

Grades Posted to Portal

**November 11th**

Veteran's Day

Schools Closed

**November 16th**

PreACT

Hewlett High School

**November 27th**

Alumni Return Day

Periods 3 and 4

Library

**November 28th—29th**

Thanksgiving Holiday

Schools Closed

## Helpful Links:

[College Scholarships](#)

[Teacher Extra Help Schedule](#)

[Honor Societies](#)



## Class of 2024

Wednesday, November 27th

*Please help spread the word to the Class of 2024!*

Members from the Class of 2024 are invited to Hewlett High School for a breakfast in their honor. The breakfast will take place in the Library periods 3 and 4 (9:00 a.m. to 10:30 a.m.). Teachers and staff are excited to welcome the Class of 2024 back and hear about their experiences since graduating last June. Please help us spread the news by sharing the registration link with any member of the Class of 2024. [Click here](#) to register.

## PreACT: November 16, 2024

### Paper and Pencil Exam

*The online registration form for the PreACT is now open.*

Students interested in taking this practice exam are asked to report to **Hewlett High School** no later than 7:45 a.m., where classroom assignments will be posted. Students must have two #2 pencils, a graphing calculator, and acceptable photo ID.

Snacks must be packed in clear zip-lock bags with name clearly labeled. Labels must be removed from all water bottles. Students must bring proper photo ID and their Admission Ticket.

#### Acceptable Photo ID documents include:

- ◆ Valid driver's license or driver's permit
- ◆ U.S. Passport
- ◆ Hewlett High School ID Card

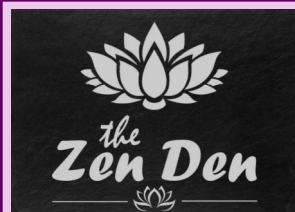
For students who are religious observant or involved in the school musical, we are offering a **Sunday, November 17th** testing date. Please indicate this request on the form.

[Click here to register](#)

Introducing the Hewlett Woodmere

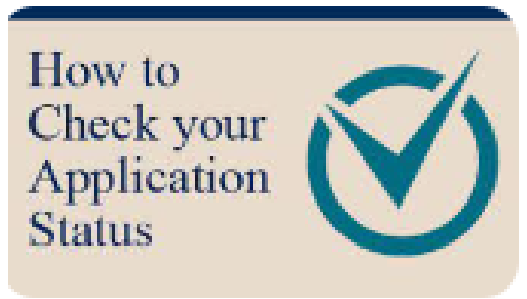
## Digital Zen Den!

[Click here for wonderful resources that promote positivity and mental health!](#)



## Application Status Portals:

- Once an application is submitted, students will receive an email requesting that they create an account in the applied college's portal. This is where you can track your application status and later find your admissions decision.
- It is important to know that it can take **up to two weeks** for these portals to reflect that official documents have been received. Do not panic!
- Keep track of the user names and passwords for each applied college.



## College Admissions Reminders:

1. Students must send their ACT and/or SAT from their online accounts. **PPS does not send scores.**
2. Transcript Release Requests for colleges with January 2025 deadline must be submitted to PPS no later than December 12th.
3. Be mindful of what you post on your social networking sites. [Click here](#) to read more!
4. Follow up with your emails! Colleges may request additional information such as your 1st quarter grades or submission of the CSS Profile. (see below)
5. Student who wish to send 1st quarter grades must submit request form. [Click here](#) to download.
6. Keep up your grades the entire year! Admission to every college is contingent on successful high school completion! Your **final GPA** must be similar to the GPA at acceptance time!
7. Communicate with your counselor and teachers if you apply to additional colleges!
8. Check websites and/or call admissions office to learn method of releasing admissions decisions.
9. Return to your Naviance account to document your admission results!!
10. Share any good news with your recommending teachers and your school counselor!

## Seniors Visiting College Campuses:

For attendance purposes, seniors who visit a college campus during a school day **MUST** complete the **Absence for College Visit Form** prior to visit. These forms are available in the PPS Office. In addition, students must submit **documentation of their visit** to the Attendance Office. All colleges will supply this documentation before and/or after a scheduled information session.

### Tips on Visiting:

Ask lots of questions; get a current student's perspective; visit academic departments; tour the student center; learn about the local community; eat in the dining hall; view the residence halls; ask about campus safety; learn about social opportunities outside the classroom—and bring a marble notebook for taking lots of notes. Create a Pros & Cons list for each visited college to log your impressions.

# On-Site College Admissions:

Senior students at Hewlett High School have a wonderful opportunity to meet with college representatives and have an instant admissions decision made at our on-site programs. Check for eligibility in the PPS Office. If you qualify, please make an appointment ASAP with Mrs. Bavaro for an interview and to obtain the guidelines for your selected college. It is important to view these guidelines, as each college handles things differently.


College	On-Site Date	Materials Due to PPS:
Molloy University	November 12	November 4
Hofstra University	November 19	November 12
St. John's University	November 21	November 14
Farmingdale State College	November 26	November 19
New York Institute of Tech.	December 3	November 26
Nassau Community College	December 12	December 5



## Scholarships and Financial Aid:

Once the college applications have been submitted, students and parents should immediately turn their attention to researching scholarships. Be mindful of the forms that may be required:

**CSSProfile** is required by many **private colleges and form is currently open!** [Click here](#) to view participating colleges.

**FAFSA** will open on December 1st. [Click here](#) to view the presentation from the October 22nd Financial Aid Night program. Parents can find assistance with filling out the FAFSA by joining a hands-on workshop. Click the link to view schedule: [FAFSA/TAP Completion Events | HESC](#) 

**HESC.gov** The Higher Education Service Corporation is a federal agency that helps families with the cost of colleges. [Click here](#) to view their many resources.

### **Types of Scholarships:**

- ◆ **Need Based Scholarships:** Money awarded based on financial need; as demonstrated on the FAFSA. Packages are mailed home in early spring of senior year after electronic submission of FAFSA form.
- ◆ **Merit Scholarships:** Money awarded based upon academic achievement during high school and standardized test scores. Generally, no additional work is required and notification comes with (or shortly after) admissions offer.
- ◆ **College Based Scholarships:** Money awarded by a specific college. Many competitive colleges award money based on additional requirements that are fulfilled on separate scholarship applications.
- ◆ **General College Scholarships:** Many organizations offer scholarship money based upon a variety of factors. Each scholarship will require a separate application with varying degrees of additional work.

# COUNSELOR ON CALL @ HHS



## Assisting with :

- Common App
- Naviance
- Self-Report Transcripts
- Essays
- Organization/Guidance
- ENL Support on Tuesday

**Weekly Sign up at the  
PPS Reception Desk**

Monday, Tuesday and  
Wednesday

3 p.m. - 6 p.m.

See Mrs. Harrison  
for details



# **NEED COLLEGE ESSAY HELP?**

**Share your essay draft(s) on a Google Doc with English Teaching Assistant, Ms. Delliquanti for constructive feedback.**

**You can also send an email for a one-on-one conference to discuss your work.  
[jdelliquantimollica@hwps.net](mailto:jdelliquantimollica@hwps.net)**

**Meetings can be scheduled during periods 3, 4, 10, or after school in the library**



# Twilight Fall Programming

## Math Extra Help

Algebra, Geometry

Algebra 2/Trig

Day: Tuesday

Time: 3:30-5:00

Location: LC Wing

## Science Extra Help

Earth Science, Living

Environment, Chemistry

Day: Wednesday

Time: 3:30-5:00

Location: LC Wing

## ELA Extra Help

Day: Tuesday

Time: 3:30 PM-5:00 PM

Location: LC Wing

Starts the Week of

11/12/24

# Twilight Fall Programming

**MATH AND ENGLISH**

**SAT AND ACT  
PREP**

**11/13, 11/18, 11/20,  
11/25, 12/2, 12/4**

**MUST ATTEND ALL SESSIONS!**

**3:30 PM-6:30 PM**

**SIGN UP USING THIS LINK:  
[HTTPS://TINYURL.COM/4MKXX956](https://tinyurl.com/4mkxx956)**

**OR SCAN THE QR CODE**



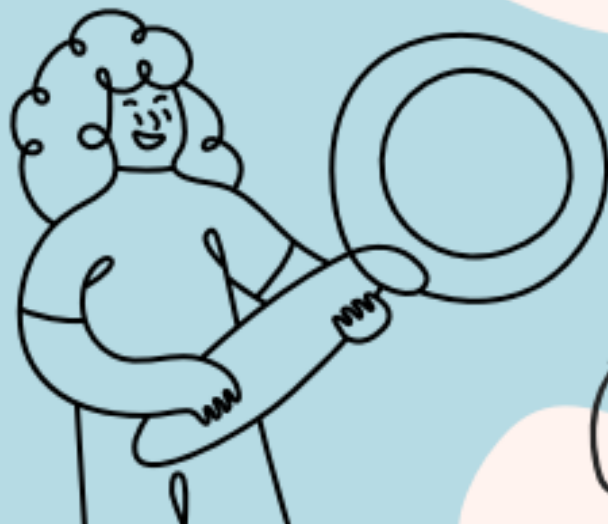
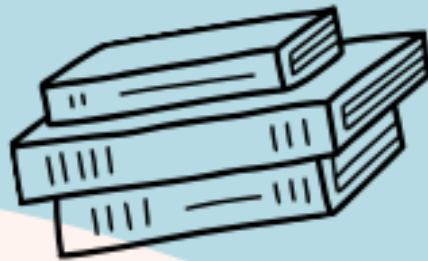
# Twilight Fall Programming

## Peer Tutoring ALL SUBJECTS

STARTS 11/18/24

**Mondays**  
**3:30 PM - 5:00 PM**

**HHS Library**





**Hewlett-Woodmere Public Schools  
and  
Lynbrook Public Schools**

Presents:

A Guide for Families to Understanding Supports &  
Services Administered by **OPWDD**  
**(Office for People with Developmental Disabilities)**

**Please join Parent to Parent of NYS  
A Guide for Families to Understanding  
Supports & Services Administered by OPWDD.**

**Monday, November 18, 2024  
6:30 PM-8:00 PM**

**Woodmere Education Center Auditorium  
One Johnson Place  
Woodmere, NY 11598**

The purpose of this training is to introduce families to the language of service delivery systems and to define and clarify information about services and supports. Participants will gain an increased awareness and understanding of eligibility criteria and the eligibility determination process. The training includes an overview of Home and Community Based Services Waiver, and Family Support Services.

**RSVP to Michelle Kinhackl  
Transition Coordinator  
516-792-4161**

**[mkinhackl@hewlett-woodmere.net](mailto:mkinhackl@hewlett-woodmere.net)**

