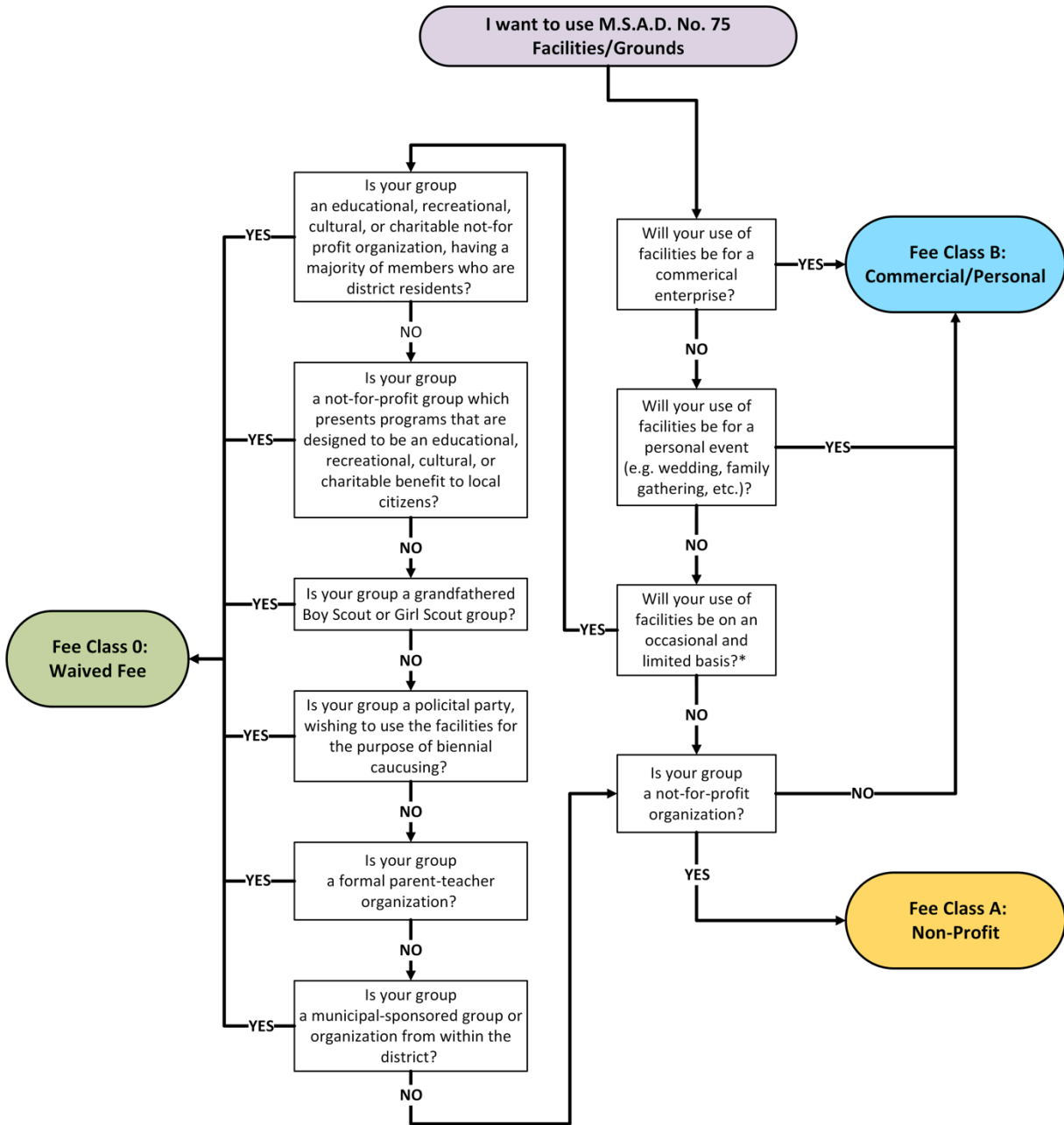


COMMUNITY USAGE FEE FLOW CHART



*KF-R: For purposes of this procedure, “occasional and limited use” shall be defined as use that:

- o Does not regularly exceed twice per month;
- o Does not involve more than one space in a facility; and
- o Does not require opening a facility at a time when it would not normally be lighted, heated and staffed.

REVIEWED:
AMENDED:

June 9, 2016
September 5, 2024