

CLARENCE CENTRAL SCHOOL DISTRICT

2024 Capital Project Planning



Together We Make Learning A Way Of Life

AGENDA

- Work To Date
- Building & District Priorities
- Financial Considerations
- Proposed Project Schedule
- Any Questions?



Together We Make Learning A Way Of Life

WORK TO DATE

- **Review of Building Condition Survey**
- **Regular Meetings with Architects, Construction Management & District Administration**
- **Multiple Meetings with Board of Education Facilities Committee**
- **Determine Funding Available for Project**
- **Review District Debt Service**
- **Identify Maximum Cost Allowance for Each Building**



Together We Make Learning A Way Of Life

HARRIS HILL

- Playground Replacement
- Masonry & Concrete Repairs
- Septic & Water Supply Upgrades
- Miscellaneous Items



Together We Make Learning A Way Of Life

SHERIDAN HILL

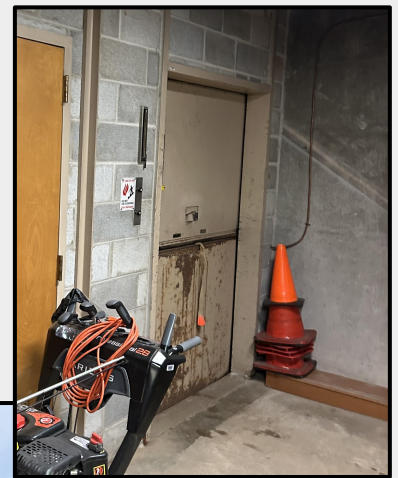
- Parking Lot Replacement & Drainage
- Masonry & Concrete Repairs
- Septic & Drainage Upgrades
- Miscellaneous Items



Together We Make Learning A Way Of Life

CLARENCE CENTER

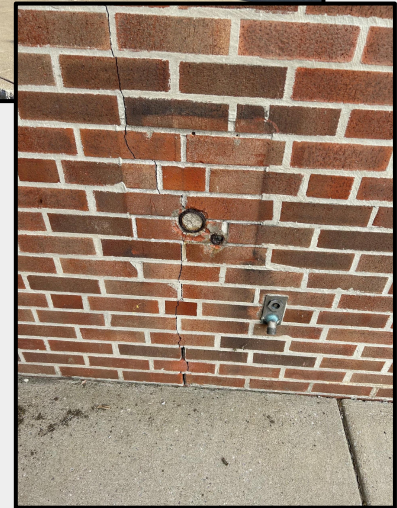
- Masonry & Stair Repairs
- Elevator Replacement
- Partial Window Replacement
- A/C & Drainage
- Miscellaneous Items



Together We Make Learning A Way Of Life

LEDGEVIEW

- Masonry, Concrete & Railing Repairs
- Septic & Drainage Upgrades
- Basement Storage Access
- Miscellaneous Items



Together We Make Learning A Way Of Life

MIDDLE SCHOOL

- Parking Lot
- Masonry Repairs
- PA System Upgrade
- Elevator Replacement



Together We Make Learning A Way Of Life

HIGH SCHOOL

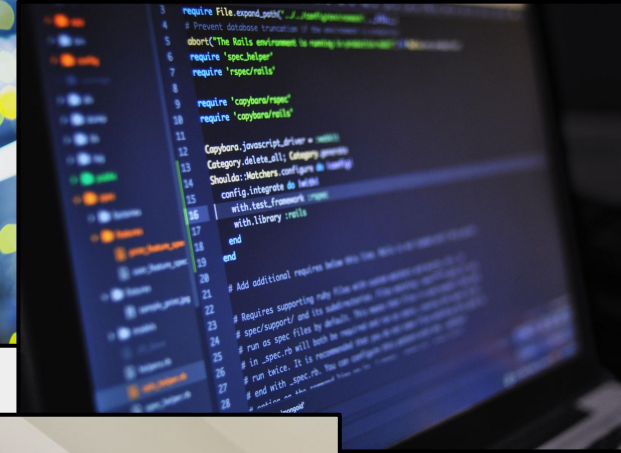
- Front Parking Lot
- Masonry Repairs
- Replace Stage Roof
- Sewer Line
- Resurface Running Track
- Replace Unit Ventilators
- Select Interior Flooring Replacement
- Miscellaneous Items



Together We Make Learning A Way Of Life

TECHNOLOGY

- Production Servers
- VDI Servers
- Access Points



DISTRICT-WIDE

- Emergency Exit Lighting Upgrades
- Signage - All Buildings



Together We Make Learning A Way Of Life

FINANCIAL CONSIDERATIONS

- **Building Aid Ratio**
 - 67.2%
- **Maximum Cost Allowance**
- **Capital Reserve Utilization**
 - Anticipated \$3 Million
- **Tax Neutral**



Together We Make Learning A Way Of Life

PROPOSED PROJECT SCHEDULE

- **Scope Identification & Vetting**
 - **Public Forums Scheduled for March 20 & April 18**
- **Testing & Investigation**
- **Coordination of Services with Government Agencies**
- **Finalize Budget Pricing & Scope**
- **October 2024 - Board of Education Approval**
 - **SEQRA & Resolution**
- **November 2024 - Public Hearing**
- **December 2024 - Vote**



Together We Make Learning A Way Of Life

**ANY
QUESTIONS?**



Together We Make Learning A Way Of Life