



Dear Parents,

The SMART tag™ system helps increase safety and security for students riding on a school bus, leveraging technology to improve student management and communications on school buses.

SMART tag™ monitors the location of each tablet-equipped school bus, including student loading and unloading, providing real-time information to the Transportation Department, and you, the parent.

### SMART tag™ will help...

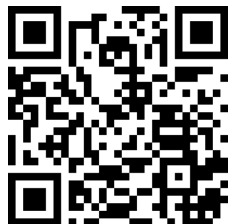
- increase driver, school, and parent awareness
- ensure riders will load on the right bus and unload at the right stop
- maximize rider safety and security
- enable drivers to efficiently and effectively carry out their duties
- ensure Special Education and Pre-K students are released to authorized guardians.

### SMART tag™ Parent App

- SMART Alerts – sign up to receive push notifications when the bus is near your student's designated bus stop.
- SMART Locate – view live bus location from when you receive the arrival alert up to your home stop.
- Authorized guardian release. This allows you to add and update authorized guardians through the Parent App (for primary parents only and if enabled by your district).

### Make sure to register!

Download the Parent App from the app store or scan the QR code, and register to take advantage of the SMART tag™ Parent Features.



<https://www.qbit.codes/q/smart-tag-parent-app>

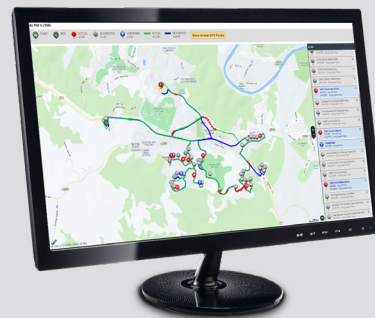
## How it Works



**Student ID (SMART tag™)**  
Students are issued passive, Radio Frequency Identification (RFID) cards which do not store student information nor emit any tracking information. RFID technology is used in many industries such as medical (patient, equipment & supplies tracking), libraries (book tracking), and even amusement park access. These IDs are read when students get on or off the bus by an RFID reader. On campus, they can be used at the cafeteria and library via their printed bar codes.

### Bus Tablet

SMART tag™ school buses are equipped with a tablet computer and RFID reader. When riders get on or off, they present their ID onto the reader and the tablet displays if the rider is boarding the correct bus or are getting off at their correct stop. The tablet uses its GPS information to report its location and speed, ridership activity and other safety-related information.



### Transportation Administration

While buses are in service, their location and ridership info are available for the transportation administrators, so they can oversee all school bus activity.

For more information about SMART tag™, please visit our website at <http://www.smart-tag.net>.