



WILSHIRE SCHOOLS EAST

ANNUAL REPORT

2023-2024

WILSHIRE
SCHOOLS
EAST

ERIKA J GLAZER
EARLY CHILDHOOD CENTER
of WILSHIRE BOULEVARD TEMPLE

BRAWERMAN EAST
ELEMENTARY SCHOOL
of WILSHIRE BOULEVARD TEMPLE



MESSAGE FROM

The Head of School



Dear Wilshire Schools East Community,

Returning to the Glazer Campus for the 2023-2024 school year filled me with a profound sense of peace and completeness. Spending the year with each of you was a true joy. Seeing the growth of Wilshire Schools East as one dynamic community aligned with the same goals and leadership brought me happiness.

Last year, we embraced the theme of *shalom*, learning to balance different and sometimes opposing ideas or experiences and finding peace

and wholeness within that duality. Together, we navigated challenges, embraced change while honoring tradition, and balanced sadness with hope and joy. Our children reminded us to see the positives in challenging moments and strive to be the good in the world. October 7 changed our Jewish world, reminding us of the fragility of peace and the importance of our values. In these times, our theme of *shalom* gained new depth, guiding us to process our emotions with thoughtfulness and intention.

Shalom is about holding sorrow and joy, despair and hope simultaneously. True peace is not the absence of conflict, but a sense of wholeness despite brokenness. Last year, we learned that peace involves actively seeking out and cultivating good in our lives and the world. Finding the good requires intentionality, looking for kindness, beauty, and connection, even in dark times. It means being the good, reflecting our values of compassion, justice, and community. Through these efforts, we foster collective strength and resilience.

As we reflect on the 2023-2024 school year, we are reminded that peace and wholeness are dynamic processes. Living a life of honor and care means continuously aligning our actions with our values, honoring our heritage, and strengthening our community. There is no better place to do this than in our schools.

Shalom,

Gillian Feldman
Head of School, Wilshire Schools East





MESSAGE FROM The Head of School Cabinet Chair

The theme for the 2023-2024 school year was *shalom* (peace). Chosen before the tragic events of October 7 in Israel, this theme took on profound significance, reminding us of the vital importance of peace and unity in our community. It brought a sense of calm and solidarity as we continued to build and strengthen our connections during these challenging times.

Led by our Head of School Gillian Feldman, the Cabinet serves as a dedicated resource supporting the schools' missions and the needs of our community. Last year, the Cabinet worked closely with the community to provide valuable input and feedback on student and community affairs. Under Gillian's leadership, and with the unwavering support of administrators and teachers, our Wilshire Schools East program grew and flourished.

During the 2023-2024 school year, the seamless merging of Brawerman East and the Glazer ECC created a beautifully well-rounded environment, enriching the educational journey for all. Brawerman continually sought innovative ways to provide our children with an exceptional education while steadfastly upholding core Jewish values. It is no surprise that we remained a competitive independent school, proudly watching our children matriculate into the finest secondary schools across Los Angeles. The strong connection between the administrators and our incredible group of lay leaders from both the Glazer ECC and Brawerman East ensured that we could effectively navigate the needs and practical experiences surrounding our exceptional educational program.

Thank you to the Cabinet and our wonderful community for your ongoing determination, vision, and collaboration. Your efforts have helped to launch exciting changes that will enable our schools to excel and thrive for years to come.

Jessica Lewensztain, Head of School Cabinet Chair

HEAD OF SCHOOL CABINET

Jessica Lewensztain, *Chair*
Jamie Holzmann

Matthew Jacobs
Avi Klein

Jessica Mackenzie
Carrie Scott



Parent Association

GLAZER EARLY CHILDHOOD CENTER

The Glazer ECC Parent Association was dedicated to organizing meaningful events throughout the 2023-2024 school year to bring our teachers, students, and parents together to celebrate Jewish holidays and traditions as a community. Our *Chanukah* celebration brought the entire ECC community together with songs and dance, as well as special activities in Glazer classrooms. We had a meaningful seder for Passover and *hamantaschen*-making for *Purim* which was a highlight for the kids. Our Kachol and Katom classes reached their milestone of making their *Shabbat* boxes filled with items they will use every week for years to come, and our lower classes jammed out to the Beat Buds during a Pajamarama pizza party. Our TK and DK classes made covers for their *Torahs* which they used as they walked in their *Kadima* ceremony and embarked on their journey "forward" to their next chapter. Lastly, we were fortunate enough to have a big celebration in honor of Israel's birthday. The kids wrote letters and placed them in our very own "Western Wall," where they could experience and feel a little piece of our homeland right here in Los Angeles. We all feel so fortunate to be a part of this beautiful Jewish community and we are so grateful for all the time and effort our Parent Association gave last year to make all of these celebrations incredible for our children.

Joanna Arkuss and Jennifer Green Rivera, Glazer ECC PA Co-Presidents



BRAWERMAN EAST

Last year's apt theme of *shalom* exemplified what it meant to be a member of our very special community. As I reflect on the nuances in the definition of the word *shalom*, it is not lost on me how much our families, last year more than ever, looked to our school and Temple community for peace and balance.

The values of our Parent Association are rooted in connection, with parents volunteering countless hours to support our school and community at large. Coffees with Clergy felt important and vital, and celebrations felt incredibly meaningful. Annual favorites including the Beach Meet Up, *Sukkot* Family Picnic, Book Fair, and *Rosh Hashanah* Apple Tasting started the year off; Thanksgiving, our *Chanukah* Latke Fry Off, Grandparents and VIP Day, and yearlong *tikkun olam* partnership with the Karsh Family Social Service Center and Heal the Bay took us through the winter and spring. And we cannot forget our *Purim* Carnival which was an extravaganza last year! We welcomed Brawerman West to our campus for an absolutely incredible day of limitless joy.

I've always said that Brawerman East is more than a building. Its energy, mission, and spirit reach far beyond its beautiful walls. Now, more than ever, we can appreciate how these same walls serve not only as our anchor, but our fundamental reasons on why this campus was built in the first place. It has been my absolute honor to serve our community these past years. *Shalom*, my beloved Brawerman East.

Carrie Scott, Brawerman East PA President

GLAZER

Early Childhood Center Spotlights

PLAYGROUND

Thanks to the generosity and support of our community toward our 2022 Annual Giving Campaign, a brand new playground structure was installed over the summer of 2023. With this new equipment, the playground has been a place of exploration, friendship, and gross motor development, where imaginations soar as children swing, climb, and play.



EARLY LITERACY SKILLS

Our Transitional Kindergarten (TK) and Developmental Kindergarten (DK) classes focus on nurturing early literacy skills in a supportive learning environment that values each child's unique developmental journey. We foster oral language skills through meaningful conversations, opportunities for storytelling, and group discussions. Writing readiness is developed by exposure to uppercase and lowercase letters, signing in daily, word walls, letter formation practice, journal writing, illustration, and targeting vital developmental skills. Children spend time at the literacy center in their classrooms, building a strong foundation in oral language, emergent literacy skills, and a love for reading and writing through engaging, developmentally-appropriate activities.



INVESTIGATIONS

In our ECC, our curriculum approach is centered on long term investigations, which allow children to delve deeply into topics of interest with creativity and innovation. Children learn to ask questions and think critically about the world around them, developing skills in hypothesizing, experimenting, and drawing conclusions. Last year, a two-year-old class was fascinated by sound and explored sound through different mediums, listening for different tones and rhythms. Additionally, a three-year-old class interested in construction decided to build a bridge with water running under it. They interviewed Brawerman East Innovation Specialist Isai German about the elements of a strong foundation, and even spent time in the Brawerman Innovation Lab building their own bridges. Through hypothesizing, asking questions, and making blueprints, the children built their own bridge out of popsicle sticks.



Brawerman EAST Spotlights

KINDERGARTEN

Kindergarten students embarked on a meaningful collaboration with the Karsh Family Social Service Center, assembling activity kits for children who frequent the center. Witnessing our students eagerly prepare the bags with the items they brought was heartwarming, as they gained awareness about the program's significance. Derek from the Karsh Center provided insightful explanations about how these kits would be utilized, and our students posed thoughtful questions, demonstrating their genuine interest and empathy. We take pride in our kindergarteners for exemplifying the Jewish value of *tikkun olam* through their actions, fostering a sense of responsibility towards repairing the world.



1/2 VILLAGE

The 1/2 Village students at Brawerman East built a tie to Jews around the world through a special connection to de Toledo High School's Global Education Program. Jewish exchange students visited from Turkey, Mexico, Israel, Uruguay, and Budapest throughout the year and came to tour Wilshire Boulevard Temple. During these visits, they also visited the 1/2 classroom. Our students made welcome cards and greeted them at the entrance of the school, displaying our Jewish value of *hachnasat orchim* (welcoming guests). Sometimes we did creative activities based on a Jewish holiday like on *Tu B'Sh'vat*, when we designed epic treehouses with our guests. Other times we played get-to-know-you games where we tried to find out interesting facts about each other personally and culturally. Our visits ended on the Athletics Complex with dancing, soccer, and big smiles all around. Through these exchanges, our students learned that Jews all over the world share the same rituals and traditions, while coming from diverse geographic cultures.





3/4 VILLAGE

Brawerman East continued its partnership with the Wallis Annenberg GenSpace, a community center serving older adults in our local Koreatown community. Last year, students in the 3/4 Village engaged with GenSpace members through a storytelling series, using cards with photographs and words to create thoughtful narratives that bridged generations, cultures, and languages. This partnership provided a safe space on the Wilshire Boulevard Temple campus for students to connect with people from diverse backgrounds, enriching the lives of both the students and the GenSpace members.

5/6 VILLAGE

In the 5/6 Village, our reading curriculum emphasizes deep analytical thinking, speaking, and writing about the books we read. We read our novels as a whole class, and students track their thinking through annotations in their books and entries in their reading journals. These strategies allow students to think deeply and read closely, noticing the specific details and authorial choices in a text that help us to better understand the themes and lessons. Students then share their thoughts in whole class and small group reading discussions, where they build on each other's ideas to discover new connections and insights. In many ways, our students are utilizing the same skills our people have used for thousands of years in the study of *Torah*.

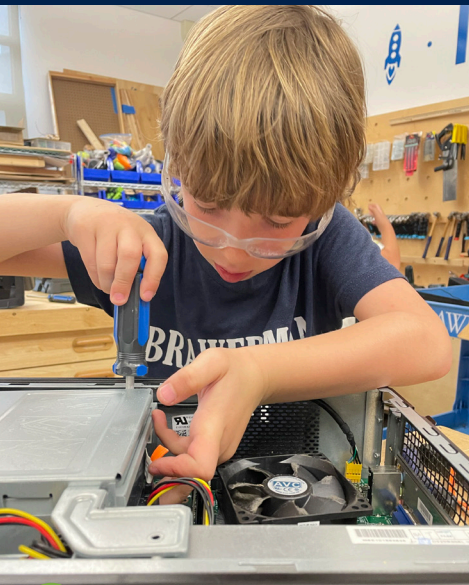


BRAWERMAN EAST ENRICHMENT PROGRAM (BEEP)

Students can expand upon their interests and passions through our afterschool Brawerman East Enrichment Program (BEEP). Classes are taught by a combination of Brawerman East and outside educators and rotate each semester. Last year, students enjoyed a variety of class options that expanded their creativity, developed resilience, and built deeper relationships amongst students across the grades.

The 2023-2024 school year BEEP classes included:

- Orchestra
- Musical Theater
- Choir
- Dance
- Athletics
- STEAM & Innovation
- Woodworking
- Visual Arts
- Cooking



MAKERS FAIR

Ask any Brawerman East student about our Innovation Lab and they will tell you how much fun it is! Starting in Kindergarten, our students are developing resilience, deepening their creativity, and building confidence, all while learning science, coding, design, and computational thinking.

Last February, students proudly shared their learning at our 6th Annual STEAM Makers Fair. Our whole community came together, cheering on Kindergarten students during their light-up jellyfish umbrella parade, playing hand-built pinball machines, and celebrating the wonder of science. A robotic dinosaur also made a special appearance, and alumni joined us to run interactive STEAM booths.

Our Makers Fair was truly a special experience for the entire Brawerman East community and a reminder of the importance of cultivating the spirit of innovation in our students.

Experiential Learning

Grade 4



SACRAMENTO

Grade 4 had an exciting time seeing history leap from their textbook to real life with a trip to Sacramento. Students donned their hard hats and explored the mines of the Mother Lode in the Gold Bug Mine, watched the hammer hit the anvil at a blacksmith shop, panned for gold, and learned that gold was extracted from quartz. Students explored Old Town Sacramento, including an underground archaeological site that showed how the streets were raised to protect the city from devastating flooding. After a stop at the California State Railroad Museum to learn about the building of the railroad and explore old-fashioned locomotives, students ended the day by climbing aboard a horse drawn wagon to tour the town. The Sacramento trip is the first overnight trip at Brawerman, which marks a critical turning point in students' development, maturity, and independence.



Grade 5

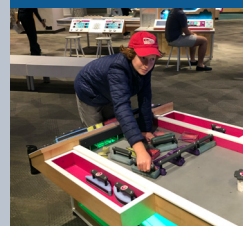


ASTROCAMP

Grade 5 students had a stellar time enhancing their scientific knowledge and personal growth during a three-day trip to Astrocamp. Astrocamp is an innovative outdoor science school program designed for students to explore the principles of physics and astronomy in a fun and interactive way. Some highlights from the trip include using lights and lasers to learn about the light spectrum and experiencing the thrilling Skycoaster ride. Students gazed at the stars using high-powered telescopes and observed the sun through a special solar telescope. Students also participated in a late-night scavenger hunt where they worked together to complete challenges. Overall, this trip was an excellent opportunity for Grade 5 students to broaden their scientific knowledge, build their independence, and bond with one another.

BOSTON

Grade 5 spent five fulfilling days learning, growing, and exploring the historic city of Boston. One of the trip's highlights was visiting Plymouth to explore the Plimoth Patuxet Museum, where students entered the world of the Indigenous and colonial people who lived, worked, and built communities along the exact shores in the 1600s. Other experiences included visiting Salem and Paul Revere's house, riding a duck boat through Boston Harbor, going to the Edward M. Kennedy Institute for the United States Senate, and exploring Lexington and Concord. Students even got to experience a Boston Red Sox game at Fenway Park, where they made it onto the jumbotron! They ended their jam-packed week with a meaningful moment at the New England Holocaust Memorial. The Grade 5 Boston trip was an incredibly memorable experience for all.





Grade
6



ISRAEL WEEK

When the class of 2024's Grade 6 trip to Israel was canceled following the atrocities of October 7, Brawerman made it our mission to create a meaningful alternative Israel experience for students. Led by Elhanan Brown, our Israel Engagement Specialist who flew in from Israel for the week, Grade 6 students from both Brawerman West and East experienced the next best thing to traveling to Israel: spending a week of school immersed in Israel-related learning and experiences. Students made hand-dipped candles inspired by the city of Tzfat, participated in a drum circle akin to those at the Bedouin tents, negotiated at a "shuk" for Israeli treats, dug for archeological treasures, and learned about the diversity of Israeli society. Throughout Israel Week, students fostered a meaningful connection with and deep love for Israel. Even though they did not get the chance to physically leave the country, they still had the opportunity to cultivate relationships with each other, across campuses, and with their Jewish homeland. Brawerman looks forward to taking the Class of 2024 to Israel in the future.

NATIONAL PARKS

In lieu of going to Israel this year, Grade 6 East and West students embarked on a weeklong adventure to Utah and Arizona to explore our beautiful National Parks. Students hiked the majestic canyons at Bryce Canyon and the Grand Canyon and enthusiastically floated down the Colorado River where they passed Horseshoe Bend, looking at 1.1 million-year-old cliffs. The last stop was Sedona, where students were blessed to have the entire magnificent sanctuary of the Jewish Community of Sedona and the Verde Valley as their Brawerman prayer space. With journals in one hand and prayer books in the other, students reflected on their incredible journey — not just on the trip, but also on their collective years at Brawerman — as they looked through the prayer book for a poem or prayer they connected with. The National Parks trip was an inspiring cumulative experience for our students, full of breathtaking sites and spiritual connections.



Wilshire Schools EAST Spotlights



ISRAEL AND HOLIDAY CELEBRATIONS

At Wilshire Schools East the connection with Israel is a core tenant of our students' educational journeys. The value of connecting with our Jewish homeland and understanding the complexities of our people's history is essential. In partnership with our educators and Wilshire Boulevard Temple clergy, students had the opportunity to engage in meaningful Israel programming during the 2023-2024 school year. Students in Grades 4 through 6 met on Zoom with Israeli Commander Brachia Rosenblow to learn about the Israeli Defense Force and the land of Israel through his personal experience. The 5/6 Village students brainstormed ways to support *kibbutzim* directly impacted by the events of October 7. They organized a bake sale for the school and local community with the proceeds going directly to Kibbutz Dorot.

Rooted in Jewish values, holidays encourage shared experiences that foster community. Last year, students at Brawerman East partnered with children at the Glazer ECC to learn, create, and inspire joyful Judaism. From *Chanukah* to *Tu B'Sh'vat* and *Passover*, children across the ages cooked, gardened, and explored together as a Wilshire Schools East family.

BUDDY PROGRAM

Students built meaningful connections with each other through our school-wide buddy program. Throughout the school year, ECC students paired up with Brawerman East students to bond through hands-on learning and activities. Last April, with our Grade 6 leaders as their guides, DK and TK children learned about the partial eclipse, observed the eclipse wearing protective glasses, and recorded observations.



Wilshire Schools East Leadership



Gillian Feldman,
*Head of School,
Wilshire Schools
East*



Floryn Rosenberg
*Director,
Glazer ECC*



Danielle Sebring
*Principal,
Brawerman East*



Stefanie Hagen,
*Assistant Director,
Glazer ECC*



Meredith Meroney,
*Director of
Admissions,
Wilshire Schools
East*



Erin Jacobs,
*Director of
Operations,
Brawerman East*



Randi Moss,
*Interim
Administrator,
Brawerman East*

Wilshire Boulevard Temple Clergy



Rabbi Steven Z.
Leder



Rabbi Elissa
Ben-Naim



Rabbi David
Eshel



Rabbi Susan
Nanus



Rabbi Joel
Nickerson



Cantor Lisa
Peicott



Cantor Kerith
Spencer-Shapiro



Rabbi Joel
Simonds



Rabbi Hannah
Elkin



Cantorial Intern
Aliya Stuart



Rabbinic Intern
Jeff Silverstein

Wilshire Boulevard Temple Schools Leadership



Naomi Reem,
*Executive Director
of Education*



Noa Grant,
*Director of School
Communication*



Rebecca Spain,
*Director of
Advancement*



Jayme Zahavi,
*Associate Director
of Advancement*



Oriana Horowitz,
Chief of Staff

MATRICULATION

We are proud to share that the graduates of the Class of 2024 are attending the following secondary schools this fall:

Campbell Hall

Marlborough School

Milken Community School

Wildwood School

Windward School

We are excited to see how our newest alumni soar in the next leg of their educational journeys!



Students from our recent graduating classes have received multiple acceptances into top Los Angeles secondary schools including:

- The Archer School for Girls
- The Buckley School
- Brentwood School
- Campbell Hall
- Chadwick School
- Crossroads School for Arts & Sciences
- Episcopal School of Los Angeles
- Geffen Academy at UCLA
- Harvard-Westlake
- Marlborough School
- Milken Community School
- Oakwood School
- Pilgrim School
- Summit View
- Tree Academy
- Wildwood School
- Windward School
- Westridge School

Mazal Tov to the BRAWERMAN EAST ALUMNI Class of 2018!



THEY ARE ATTENDING THE FOLLOWING UNIVERSITIES:

University of California, Berkeley
University of California, Davis
University of California, Santa Barbara
Loyola Marymount University
University of Michigan
Northeastern University
Tufts University
Tulane University

Brawerman East Charter Class of 2018 Shabbat

Brawerman East honored the charter class with a meaningful alumni *Shabbat* to celebrate their high school graduation. The alumni returned to their Brawerman East home with their families for a special honor and blessing. A surprise visit from musical guest Jason Mesches added to the joyous atmosphere as the alumni reconnected with friends and former teachers. This *Shabbat* highlighted memories from their time at Brawerman East and the profound impact the school has had on shaping their identities. It was a beautiful occasion to reflect on the past and celebrate the enduring bonds within the Brawerman East community.



Brawerman East Charter Class Spotlights

SAM ABRAMS



During high school at Marlborough School, Sam delved into her passion for both art and science. She honed her photography skills, winning the 2023 Congressional Art Competition for District 30, among other awards. Through her piano playing, she earned membership in the National Fraternity of Student Musicians. She also did marine science research outside of school, specifically on sea stars and comb jellies, with a mentorship at National Oceanic and Atmospheric Administration (NOAA).

Sam is attending the University of California, Santa Barbara's College of Creative Studies, majoring in Marine Science.

GIDEON GOLDBERG



In high school, Gideon was a part of the Milken Jazz Band, the basketball team, Model UN, and ran a finance club. He also interned for a real estate group through Milken's internship program. In addition, Gideon volunteered at many places, including Friendship Circle, Karsh Family Services Center, Red Cross, and the election centers during the 2022 primary and general elections.

Gideon is attending University of California, Berkeley, majoring in Economics.

EMILY LEVIN



Emily is a rising senior at Choate Rosemary Hall, a boarding school in Wallingford, Connecticut. When she made the decision to attend Choate, Emily decided to "re-class," and is currently a senior. Emily is a classical singer and plans to study classical vocal performance and opera in college. At Choate, she has been able to continue her training in classical voice, as well as pursue her passion for studying history and government. Emily's senior year will be busy, as she will be attending the Manhattan School of Music Voice and Opera Pre-College

program, as well as serving as the president of Hillel, singing in the Chamber Choir, and serving as a dorm prefect.

Brawerman East remains close to Emily's heart. Not only was her love of music and performance fostered at Brawerman East, but it is there that she also learned to stand up for her values, to love being Jewish, and to support Israel.

JACOB MILDER



Throughout high school, Jacob participated in many clubs and extracurriculars, the most prominent being Boy Scouts, in which he earned the rank of Eagle. Jacob has dedicated hundreds of hours to volunteer work and earned the President's Volunteer Service Award. He also continuously connected back to his Jewish roots, participating in the Diller Teen Fellowship program where he met hundreds of Jewish peers from around the world and learned to become an effective Jewish leader in today's world.

Jacob is attending the University of California, Davis, majoring in Aerospace Engineering.

Brawerman East Charter Class Spotlights

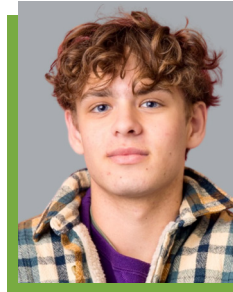
MELIA NISHITA



Melia was very involved in extracurricular activities during her time in high school. She was both the volleyball team and basketball team Captain, as well as Head Stage Manager and Student Sound Director of the Chadwick Performing Arts department. Melia was also a Jewish affinity group member, Multi Racial affinity group member, and Vice President of Habitat for Humanity club. She was a 4-year community service volunteer at various sites, including the Center for Learning Unlimited, Boys and Girls Club San Pedro, and Cancer Support Community South Bay.

Melia will be attending Northeastern University, majoring in Psychology.

ERIC VAUGHAN



During high school at Oakwood School, Eric was on the track and field team and the basketball team. Outside of school, he worked part-time as a file clerk and as an usher for the Hollywood Bowl. Eric also plays the guitar and volunteers for Santé D'Or Animal Rescue.

Eric is attending the University of Michigan, majoring in History.

GAVIN LEE VOGEL



Gavin spent his middle and high school years at Milken Community School. During his time there, he played on the football, basketball, and volleyball teams. Gavin served as the football team's Manager his junior year. He spent his senior year as the Quarterback of the varsity football team and as the Middle Blocker on the varsity volleyball team, lettering in both sports and winning awards for *Clutch Player of the Year* and *Liberty League First Team*. Gavin spent the second semester of his sophomore year living

in Israel on Milken's *Tiferet* program and was a Student Ambassador. He served as a Vatik his senior year, providing mentorship and programming for freshman students.

Gavin is attending Tulane University, majoring in Communications & Sports Management.



Fundraising & Engagement



REBECCA SPAIN
*Director of
Advancement*

JAYME ZAHAVI
*Associate Director
of Advancement*

The 2023-2024 school year was not what we expected. With the horrific events of October 7 and our minds and hearts completely with Israel, we made the decision to put off the launch of our Annual Giving Campaign. We were unsure how successful our campaign would be taking into consideration the tragedy unfolding in our Jewish homeland. Unsurprisingly, the Wilshire Schools East community showed an outpouring of love and support to Israel while continuing to make Brawerman East and Glazer ECC, as well as the overall security at Wilshire Boulevard Temple, a top priority. We are thankful to our community for supporting Israel and Wilshire Schools East, recognizing how critical it is, now more than ever, to have a thriving Jewish community.

Wilshire Schools East and Brawerman West had separate Annual Giving Campaigns for the first time ever last year. Wilshire Schools East surpassed its goal by almost \$100,000, a true testament to the strength and dedication of our community. Thank you to our Annual Giving Co-Chairs for spearheading this important campaign. Your support, along with the generosity of the entire Wilshire Schools East community — including current parents, alumni parents and former students, grandparents, faculty, and even current students — allowed us to bridge the budget gap and say “yes!” to the many innovative ideas from faculty and our parent body throughout the year.

MORE THAN
\$14,000

from Wilshire Schools
East grandparents and
alumni families

HOSTED AN
Alumni Shabbat
for the Brawerman East
Class of 2018 Graduates

16 Families

joined the Wilshire Schools
East Giving Circle by donating
gifts of **\$5,400+**
to Wilshire Schools East’s
Annual Giving Campaign

RAISED
\$269,035

for our Annual Giving Campaign
to help pay operational costs, update the
school’s facilities, enhance programming,
and provide professional development
opportunities for our staff

CREATED A NEW
**Sensory space and
test kitchen**
for both Brawerman East and
Glazer ECC children to enjoy

HOSTED
**Lunch and Learn
event for
grandparents**
about the holiday of Passover
with incoming Senior Rabbi Joel
Nickerson and Senior Cantor Lisa
Peicott



Thanks to Annual Giving funding, I had the opportunity to participate in the Jewish Education Excellence Project (JEEP): Teacher Mentor Training Program at American Jewish University alongside Builders of Jewish Education (BJE). This two-year commitment prepared me to become certified and establish the first-ever Early Childhood Educator mentors Community of Practice cohort with the BJE. Through this program, I learned how to lead and support my team of teachers, coach a mentee throughout my journey, and acquire new skills. JEEP empowered me to grow, gain confidence, and believe in myself. I am eager to continue supporting the school through professional development opportunities while mentoring others to increase the success of our school’s culture.

- GRACE MONROY, ECC Teacher



Endowment

Brawerman (East and West combined) currently has more than \$9.8 million in cash and legacy pledges.

A robust endowment is an essential component for independent schools in a landscape of rising tuition costs and scholarship requests. It also allows us to support families and areas of need for Brawerman during times of crisis. This fund is a source of long-term support for the school. The principal is invested and the yearly interest may be used to:

- Provide financial assistance
- Stabilize tuition
- Retain and recruit faculty
- Fund programs

Both Annual Giving and Endowment are critical to Brawerman's success:

- Annual Giving raises funds from all school families every year for current use
- Endowment provides for the future

Endowment gifts of \$25,000 and above will be recognized on our legacy walls on both campuses as well as in Brawerman and Wilshire Boulevard Temple publications. Opportunities are also available to endow special programs at the school.

ENDOWMENT COMMITTEE



*Joli Altshule,
Rochelle Glucksman,
Stephanie Lipson,
Jessica Rosenberg,
Kara and Brad Slater*

*Not Pictured:
Lauryn Harris,
Gretchen Klein, and
Marsha Levin*

CHAMPION

\$1,000,000+

Geri and Richard (z"l) Brawerman
Dana and Richard Pachulski
Talía and Jason Rimokh
The Shirken Family

LEADER

\$500,000 - \$999,999

Goldhirsh-Yellin Foundation, *in
Memory of Bernard and Wendy
Goldhirsh*

BUILDER

\$100,000 - \$249,999

Joli, Andrew, Liv, and Winston
Altshule
Nadine Breuer Retirement Event
de Toledo Family Scholarship
Fund
Rochelle and Jacob Glucksman
Goldstein and Fridman Families
Gretchen and Jon Klein
The Lipson Family
The Silber Family Foundation
The Sklaver Family

BENEFACTOR

\$50,000 - \$99,999

The Joseph Alexander Foundation
Brodyn, Skylar, and Georgia Bana
The Heald Family
The Samuel Family
Payam, Pegah, Kyle, Leah, and Jaden
Shahian
The Ullendorff Family

SUPPORTER

\$25,000 - \$49,999

Abrams Family Foundation
The Alpern Family
Allison and Larry Berg
The Berman Family
Brawerman Alumni Association Fund
Brawerman Parent Association
Nadine and Steve Breuer
Robin and Elliott Broidy
Lynette and Derek (z"l) Brown
Shelly and Mike Cohen and Fran and Joel
Parker, *in Memory of Sylvia and Mayer
Gutman*
The Essey Family
Sherri and John Fogelman
Julie Monkarsh Gadinsky
Suzanne and Jacob Gehl
Margo E. Freedman and
David B. Goldman
Bill and Janet Glucksman
Lonnie Levi Israel
Opal and David Judaken
Marsha and Fredrick Levin
Marcia and Doug Mankoff
Fred and Sharon Monempour
Lauryn Harris and Greg Pimstone
Orit and Nadav Ravid
Michelle and Marc Rosenbach
Caleb Rosenblum '16 and Micah
Rosenblum '21
The Rosman Family, *in Memory of Lily
and Don Rosman*
The Sabet Family
Lauren and Anton Schiff
Kara and Brad Slater
Caroline and Robby Soofer
Amy and Jeffrey P. Straus
The Waters Family



2023-2024

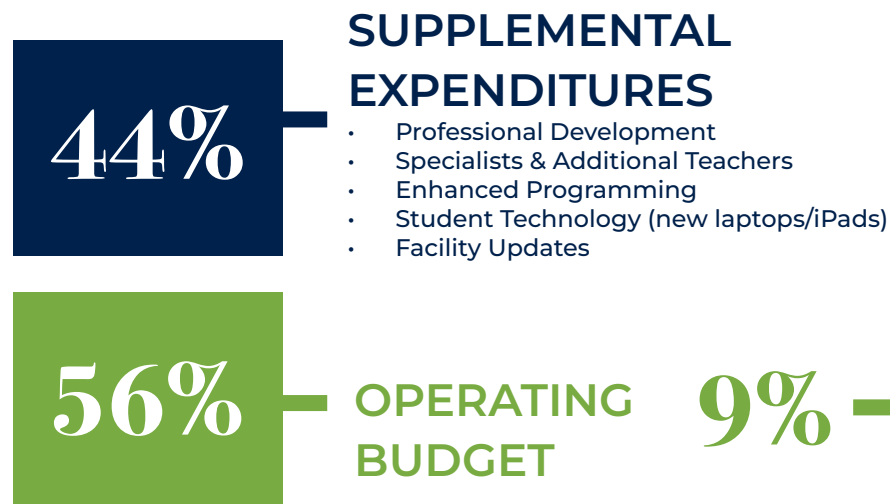
Annual Giving Campaign

Raised \$269,035

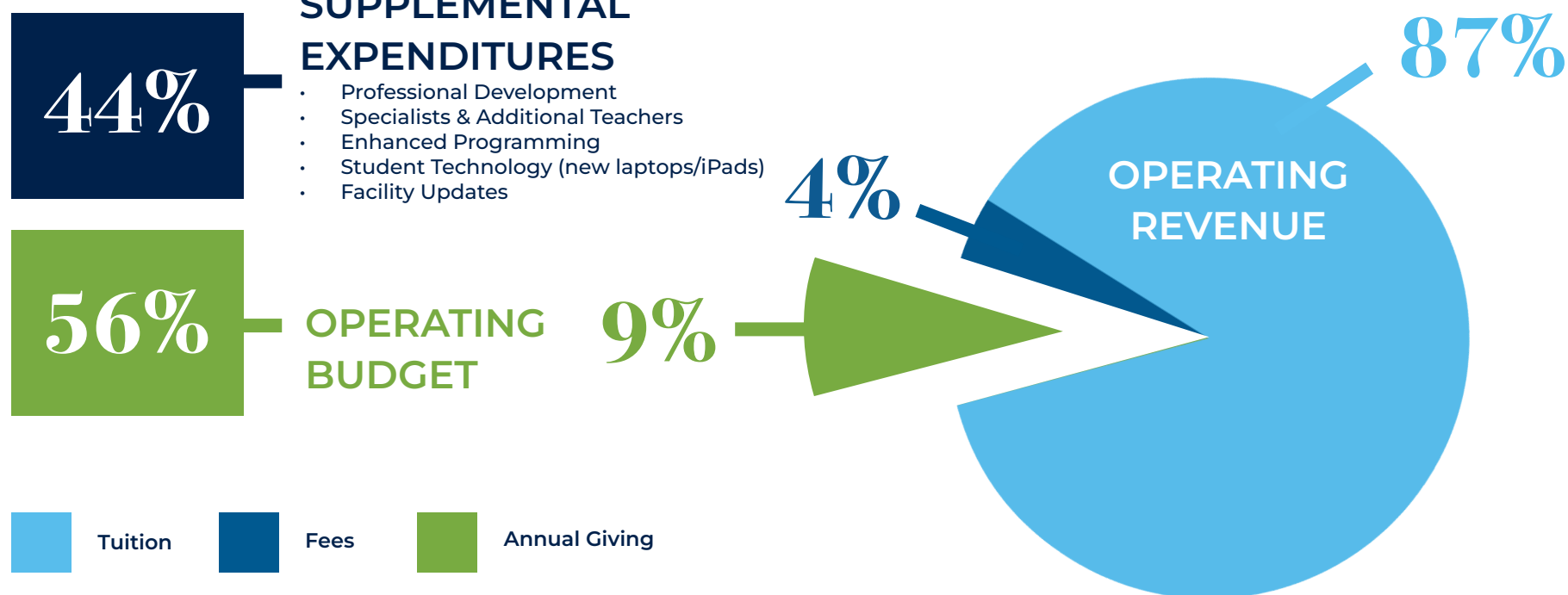
Wilshire Schools East's Annual Giving Campaign raised more than \$269,000, exceeding our initial goal of \$175,000. \$150,000 went toward Wilshire Schools East's operating budget, while the remaining \$119,000+ donated was used for supplemental expenditures.

The funds raised during the Annual Giving Campaign are vital to every part of the annual operating budget and enable Wilshire Schools East to continue growing and making investments in our facilities, education specialists, new teachers and administrators, and ongoing, enhanced programs for our students.

ALLOCATION OF ANNUAL GIVING FUNDS



IMPACT OF ANNUAL GIVING FUNDS ON TOTAL OPERATING REVENUE



Annual Giving Campaign

2023-2024

WILSHIRE SCHOOLS EAST

Grandparents

We are thrilled to thank our Wilshire Schools East Grandparents for their generous support of our 2023-2024 Annual Giving Campaign. Purposeful connections with grandparents enrich our school community. By connecting *l'dor v'dor*, from generation to generation, we make personal meaning of the world we live in. We look forward to the expansion of this valuable program as it furthers the reach and scope of our school experience, while providing additional layers of love and joy to our Wilshire Schools East extended family members.

Debi and Andy Chesler (*Leo '23, Lily, and Marley Feldman*)
Sonia Feldman (*Leo '23, Lily, and Marley Feldman*)
Shira and Rob Goldberg (*Mason and Owen Grant*)
Marjie and Robert Kargman (*Ava and Max Orlando*)
Lillian Lichtman (*Brendan '22 and Malin '24 Scott*)
Adrian and Larry Miller (*Julia and Charlie Miller*)
Steven Sax (*Daisy Dorenfest*)
Julie and Steven Shifrin (*Daisy Dorenfest*)
Karen Saeki and Jeremy Williams (*Blair Meroney*)



Annual Giving Campaign

2023-2024

Wilshire Schools East reached 73% participation from families and surpassed our financial goal!

We raised \$269,035 to help pay operation costs, enhance student curriculum, update the school's facilities, provide professional development opportunities for our staff, and so much more.



ANNUAL GIVING CO-CHAIRS

Bethany Grabiec, Jessica Lewensztain, and Julie Gerber
Not Pictured: Kate Villasenor

Wilshire Schools East Giving Circle

BENEFACTOR

\$25,000+

Susie and Brad Krevoy
Alex Kargher and Danielle Sebring

LEADERSHIP

\$10,000-\$17,999

The Gerber Family
Carol and Avi Klein
Ben and Jannelle Ross
Tali and Jordan Weiss

PATRON

\$7,200-\$9,999

The Lewensztain Family

PARTNER

\$5,400-\$7,199

The Essey Family
Rachel and Zach Fine
Analia Saban and Erwin Grussie
Bethany Grabiec and Matthew Jacobs
Joanne and Stuart Kaplan
Lindsey Goldberg and Alec McMordie
Bess Kargman and Matthew Orlando
Jacqueline and Joshua Schechter
The Weber Foundation

*Every effort is made to ensure accuracy. If you find an error contact
Jayme Zahavi at jzahavi@wbtl.org.*

Annual Giving Campaign

2023-2024

SUPPORTER

\$3,600-\$5,399

Johannah and Steven Berger
Alexandra Krug and Theodore Bressman
Karyn and Marc Cohen
Emily Fox and Lee Eisenberg
Michele and Padraic Glaspy
Chloe Beckerman and Justin Hardt
Jan Kunesch
Lindsay and Peter Lenavitt
Stephanie and Brian Mau
Jessica Mackenzie and Daniel Miller
Olivia and Neel Shah
Sarah and Adam Wolfe

FRIEND

\$1,800-\$3,599

Anonymous
Mary and David Alpan
Katie and Craig Brody
Sonia Feldman
Jennifer Fenten
Naomi Reem and Ronen Gilat
Amy and Charles Hill
Julia Kramer and Zachary Kaplan
Marjie and Robert Kargman
Jodie and Greg Kay

Naomi Klein
Ann Lippman
Ethan Lippman
Andrea and John Lobato
Meredith and John Meroney
Adrian and Larry Miller
Tessa and Joseph Port
Melissa and David Presby
Dalit and Adam Rosenberg
Joanne Nabielsky and Emilio Smeke
Diane and Alexander Stock
Katie and Brian Summers
Doreen and Dan Tenenblatt
John Walker
Karen Saeki and Jeremy Williams

DONOR

UP TO \$1,800

Anonymous
Erinn and Adam Alcabes
Michele and Siymak Bahremmand
Susan and Robert Benvenisti
Helena and David Bloch
David Bluestone
Tova and Theodore Blum
The Bulman Family
Tiana and Gregory Caplan
Debi and Andy Chesler

Arlo Cohen, *Class of 2028*
Auriane Desombre
Aimee Sax and Drew Dorenfest
Jill and Burton Epstein
Laura and Mark Epstein
Gillian and Adam Feldman
Joy Schwartz and Tim Gaylord
Scott Glazer
Carole Goldberg
Shira and Rob Goldberg
Noa and Jon Grant
Stefanie Hagen
Suzanne and Peter Hananel
Luke Heller
Leah Hochman
Alexis Holland
Jamie and Joshua Holzmman
Luis Honorato
Oriana Horowitz
Marsha Jacks
Erin Jacobs
Noa and Josh Keimach
Louise Kirschner
Rachel Malamed and Steven Kroll
Lindsey and Terry Leonard
Deanna and Justin Letter
Amanda Levin and Neil Leventhal
The Levin Family
Charlie Lewensztain, *Class of 2024*
Mila Lewensztain, *Class of 2026*
Jessica and Joshua Lewis
Lillian Lichtman
Rocio Lona
Dafna Ben-Gera and Samson Lov
The Love Family
Vera and Steven Mark
Jordyn Ostroff and Zachary Michaels
Randi and Patrick Moss
Donna Nadel
Amanda and Nicholas Nesbitt
Marlee Nesser
Melissa and William O'Donnell
Maya and Mitchell Parness
Yael Koren and Eran Pick
Nathalie and Daniel Rajzman
Hili and Nadav Rakocz
Jennifer-Ann and Brian Rivera
Floryn and Daniel Rosenberg

Jill and Ira Rosensweig
Jessica Rosner
Marla Saltzman
Lital and Gal Samrai
Gil Saraf
Megan Sass
Steven Sax
Carrie and Ben Scott
The Scott Family
Lisa and Camran Shafii
Julie and Steven Shifrin
Brooke and Ben Siskin
Wendi and Sam Sklaver
Rebecca Spain
Sophia and Josh Stein
Casey and Evan Sypek
Nancy and Israel Tanenbaum
Ariana Urbont and Billy Taylor
Jenny and Paul Tennen
Carrie and Daniel Tischler
Stephanie and Michael Todd
Kate and Spencer Villasenor
The Vogel Family
Jeanette Yoon
Jayme Zahavi
Julie Zoerb

WILSHIRE SCHOOLS EAST ALUMNI

The Bulman Family
(*Walter '19*)
The Essey Family
(*Jacob '21 and Nathan '22*)
The Levin Family
(*Emily '18*)
The Love Family
(*Naomi '19 and Josh '21*)
The Scott Family
(*Brendan '22 and Malin '24*)
The Vogel Family
(*Gavin '18 and Dorothy '22*)



Thank you

to the entire Wilshire Schools East community for your generosity.

We deeply appreciate your support and commitment to this campaign. We could not have succeeded without each and every one of you.

WILSHIRE SCHOOLS EAST

GLAZER CAMPUS

3663 Wilshire Boulevard
Los Angeles, CA 90010

WILSHIRE SCHOOLS EAST ADMINISTRATION

Gillian Feldman, *Head of School*
Floryn Rosenberg, *Director, Glazer ECC*
Danielle Sebring, *Principal, Brawerman East*
Stefanie Hagen, *Assistant Director, Glazer ECC*
Meredith Meroney, *Director of Admissions*
Erin Jacobs, *Director of Operations,*
Brawerman East
Randi Moss, *Interim Administrator,*
Brawerman East

WILSHIRE BOULEVARD TEMPLE SCHOOLS LEADERSHIP

Noa Grant, *Director of School Communication*
Rebecca Spain, *Director of Advancement*
Jayme Zahavi, *Associate Director of*
Advancement
Oriana Horowitz, *Chief of Staff*

WILSHIRE BOULEVARD TEMPLE LEADERSHIP

Donna S. Nadel, *Executive Director*
Naomi Reem, *Executive Director of Education*
Toby Berkow, *Associate Executive Director*
Jodi Berman, *Associate Executive Director*
Douglas Lynn, *Associate Executive Director*



in partnership with
JFEDLA



WILSHIRE BOULEVARD TEMPLE CLERGY

Rabbi Steven Z. Leder, <i>Pritzker Chair,</i> <i>Senior Rabbis</i>	Cantor Lisa Peicott
Rabbi Elissa Ben-Naim	Cantor Kerith Spencer-Shapiro
Rabbi David Eshel	Rabbi Joel Simonds
Rabbi Susan Nanus	Rabbi Hannah Elkin
Rabbi Joel Nickerson	Cantorial Intern Aliya Stuart
	Rabbinic Intern Jeff Silverstein

BOARD OF TRUSTEES

Scott Edelman, <i>President</i>	Fern Topas Salka
Deborah Dragon, <i>Vice President</i>	Steve Seigel
Claire Goldsmith, <i>Vice President</i>	David Wimmer
Rebecca Jonah, <i>Vice President</i>	Betty Winn
Kevin Neustadt, <i>Treasurer</i>	Robin Zucker
Jeffrey H. Cohen, <i>Secretary</i>	Alberto Valner, <i>Immediate Past</i> <i>President</i>
Carolyn Enenstein	Fredrick Levin, <i>Counsel</i>
Jennifer Haarmann	
Abbi Hertz	<i>Honorary Board Members</i>
Charles Hirschhorn	Howard M. Bernstein,
Skip Kessler	Audrey Irmas, Julie Miller,
C.J. Laffer	Richard Pachulski
Jessica Lewensztain	

BRAWERMAN MISSION STATEMENT

We provide an unparalleled educational experience rooted in Jewish values - inspiring innovative thinking, empowering responsible leadership, and honoring individuality within a nurturing community.

EARLY CHILDHOOD CENTERS MISSION STATEMENT

The Early Childhood Centers of Wilshire Boulevard Temple build strong bodies, minds, and spirits beginning at a very young age. Our primary goals are to develop each child's self-esteem, promote positive feelings toward learning, and to encourage social interaction within a Jewish nursery school setting.

2023-2024 EDUCATION & SCHOOL GOVERNANCE COMMITTEE FOR WILSHIRE BOULEVARD TEMPLE SCHOOLS

Claire Goldsmith, <i>Chair</i>	Jessica Lewensztain
Lauryl Harris, <i>Vice Chair</i>	Kevin Neustadt
Deborah Dragon	Lynn Wagmeister
Rebecca Jonah	Betty Winn

BRAWERMAN WEST ELEMENTARY SCHOOL

of WILSHIRE BOULEVARD TEMPLE

11661 W. Olympic Boulevard, Los Angeles, CA 90064
Phone: (424) 208-8934

EARLY CHILDHOOD CENTERS

of WILSHIRE BOULEVARD TEMPLE

GLAZER FAMILY

EARLY CHILDHOOD CENTER

3663 Wilshire Boulevard, Los Angeles, CA 90010
Phone: (213) 835-2125

MANN FAMILY

EARLY CHILDHOOD CENTER

1661 W. Olympic Boulevard, Los Angeles, CA 90064
Phone: (424) 208-8900

RESNICK FAMILY

EARLY CHILDHOOD CENTER

11960 Sunset Blvd, Los Angeles, CA 90049
Phone: (310) 472-1255

For information on how to support
Wilshire Schools East, contact Rebecca Spain
at (424) 208-8944 or rspain@wbtl.org.