



AchieveWorks Personality

10th Grade Career Readiness Lesson
PRHS School Counseling
November 2024

Focused on Learning for Every Student Every Day

School Counseling

School Counselors work to improve success for **ALL** students by implementing a comprehensive school counseling program focused on career readiness, appropriate academic supports, and social emotional skills to become productive citizens.



- **What we do:**
 - Meet individually, in the classroom, or in groups with students to address academics, post-graduation options, career readiness and social emotional skills.
- **Who we are:**
 - Mrs. Mary Kate Zacharias: School Counselor (A-D), mzacharias@pinerichland.org
 - Mrs. Jennifer Bowers: School Counselor (E-K), jbowers@pinerichland.org
 - Mrs. Filipowski: School Counselor (L-Q), tfilipowski@pinerichland.org
 - Mrs. Straub: School Counselor (R-Z), lstraub@pinerichland.org
 - Mrs. Secen: Transition Counselor, jsecen@pinerichland.org
 - Mrs. Welshonce: Social Worker, cwelshonce@pinerichland.org
 - Mrs. Whalen: College and Career Counselor, jwhalen@pinerichland.org
- **How to contact us:** Google Classroom/Appointment Schedule/Email/Visit office
- **Class of 2027:** Class code: f37oumy

Career Readiness Learning Goal

Using Naviance:

Students will complete **AchieveWorks Personality**, a personality type assessment, which will reveal information about a student's strengths and blind spots, recommended career paths and college majors, as well as tips for conducting the most effective career search.



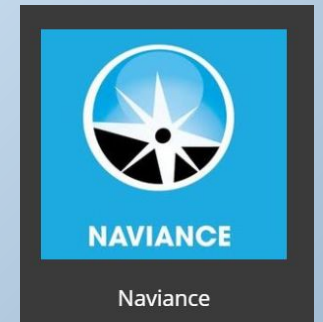
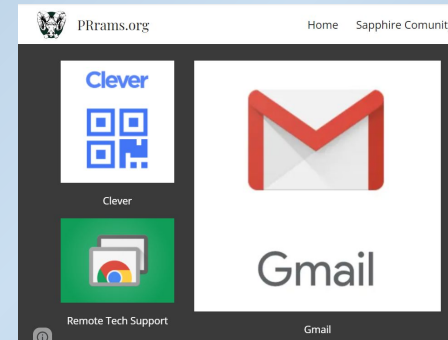
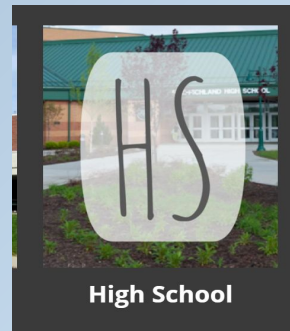
What's In It For You?

- AchieveWorks Personality[®] helps students identify their personality type by asking them to choose between 2 scenarios that best represent how they behave in real life.
- People are **happiest** and **most successful** in work that allows them to use their gifts.
- Matches career and education plans using your personality.



Signing Into Naviance

- Every student has an account
- Go to: prrams.org
- Choose the high school
- Click on Clever
- Log in with Google
- Sign in using your school district email and password

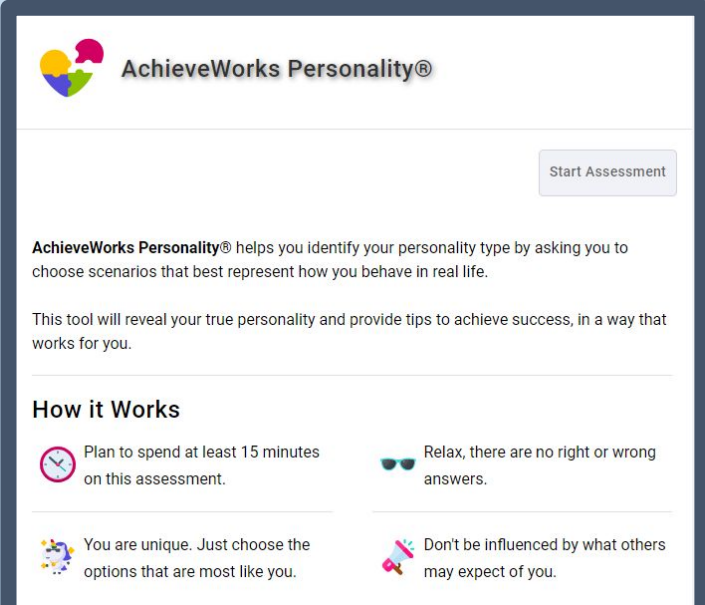


Locating AchieveWorks Personality

Accessing the lesson:

- Naviance Home Page
 - Click on the ***Self-Discovery*** tab
 - Choose ***Personality***
- Read the directions and start the assessment
 - Relax, there are no wrong answers
 - Choose between two scenarios
 - Try to be consistent

36
questions




The screenshot shows the AchieveWorks Personality assessment interface. At the top left is the logo, a colorful circle with four segments (yellow, pink, blue, green). To its right is the text "AchieveWorks Personality®". Below the logo and text is a "Start Assessment" button. The main content area contains the following text: "AchieveWorks Personality® helps you identify your personality type by asking you to choose scenarios that best represent how you behave in real life." followed by "This tool will reveal your true personality and provide tips to achieve success, in a way that works for you." Below this is a section titled "How it Works" with four items, each with an icon and text: 1. A clock icon: "Plan to spend at least 15 minutes on this assessment." 2. A sunglasses icon: "Relax, there are no right or wrong answers." 3. A person icon: "You are unique. Just choose the options that are most like you." 4. A megaphone icon: "Don't be influenced by what others may expect of you."

Rate Career Clusters

- Rate your interest in 16 career clusters
- Indicates your level of interest
- Mrs. Whalen: **Education & Training**




 AchieveWorks Personality®

PROGRESS 75%

Cluster 5/16

Rate Clusters

This part of the assessment indicates your level of interest in a variety of career groupings. Please read the description for each category and decide how interested you are in that category.



Education and Training

This Career Cluster is focused on planning, managing and providing education and training services.

Rate Cluster

★ ★ ★ ★ ★


Rate Your Personality Type

- People like you are warm, friendly, and talkative. You make friend easily.
- You are an enthusiastic and energetic person who loves to be surrounded by people and activity.
- Expressive and affectionate with your friends and family, you are usually pretty comfortable letting others know how you feel about things.
- Since you are so sympathetic and caring, you naturally like to help others and are often the first person to volunteer.

- Rating: 

View Full Report


- Look at your personality summary.
- See if you agree.
- Questions about your results?
- Talk with family, teachers,
and/or counselor.





DONE

Summary

What's Next

 **Take a look at your personality.** These will help you unpack why you think and react to events and activities in certain ways.

 **Read your full report.** Your full report includes recommendations for your specific personality. It also breaks down strengths and challenges unique to your personality. By understanding your personality, you can better develop your strengths and create environments that work for you.

 **Talk things over with your parent/guardians, teachers, or counselor.** They can help you come up with new ways to use what you've learned about yourself to help you succeed in school and life.

Your personality type is ENFJ

View Your Summary by Section

Each section will provide strengths, challenges and recommendations based on your answers. The summary provides a brief overview. Remember your “type” does not dictate who you are as a person!

- Your Personality: ENFJ (Check your handout)
- Learning
- Work and Productivity
- Communication
- Working with Others
- Recommended Careers

Famous ENFJ Personality Types

Strengths: Curious, creative, motivated, eager to learn new things.

What famous people share your personality type? What are a few similarities? Differences? Use the Internet to find famous people that share your personality type.

Famous ENFJ People:
Oprah Winfrey
Martin Luther King
Mother Teresa
Barack Obama



School Counseling Personality Types

Mrs. Filipowski: ENFJ

Mrs. Secen: ISFJ

Mrs. Bowers: ENFP

Mrs. Straub: ENFP

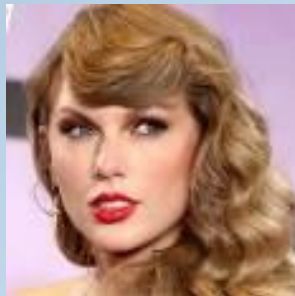
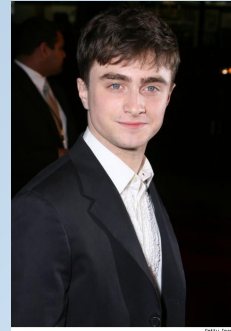
Mrs. Zacharias: ESFJ

Mrs. Whalen: ENFJ

Friends?

Teachers?

What letter does every counselor share?



Researching Careers

Click on: SEE ALL CAREER RECOMMENDATIONS


Favorite a few careers. Research salary, education, job description. Complete the handout questions.

Favorite Careers



Recommended Careers

Great news - there are a lot of careers that could be a good fit for you based on your results. Take a look and explore what makes you curious.




Marketing Managers

Plan, direct, or coordinate marketing policies and programs, such as determining the demand for products a...

Education
4 Year College

Median Salary
\$136,850

[Favorite](#)



Treasurers and Controllers

Direct financial activities, such as planning, procurement, and investments for all or part of an organization.

Education
4 Year College

Median Salary
\$129,890

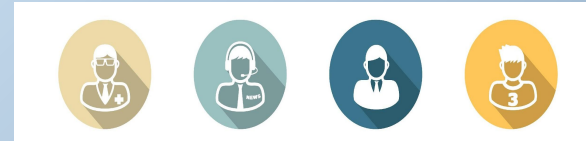
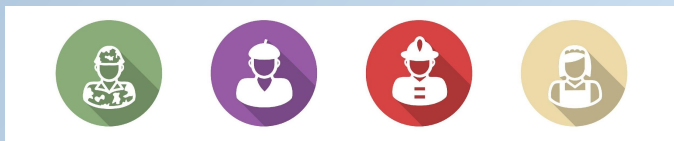
[Favorite](#)

Researching a Career

Self-Assessment Inventories help you identify, interests, aptitude, values. Resources: Naviance, Education Planner.

Investigate: summer programs, informational interviews, job shadowing, research, volunteer. Resources: TeenLife.com, Naviance, College Board's Big Future, college websites.

Career goal: Identify high school classes, training and education. Resources: Counselors, colleges, technical schools, employers, community colleges, family, Internet career links.



Resource Links

<https://student.naviance.com/pinerichland>

<http://stemcareer.com/>

<https://bigfuture.collegeboard.org/>

<https://www.onetonline.org/>

<http://www.educationplanner.org/>

<https://www.mymajors.com/>

<https://www.howscienceworks.pitt.edu/>

<https://www.besthealthdegrees.com/careers/top-10-healthcare-careers-for-the-future>

<https://uncw.edu/career/whatcanidowithamajorin.html>

