



A World Class
International Education



Nobel Algarve
BRITISH
INTERNATIONAL
SCHOOL

Pre-School Booklet

Ages 3 to 6



a proud member of globeducate



Dear Parents,

On behalf of all the children and staff we would like to welcome you to the Pre-School (ages 3 to 5 years old “Sala dos 5 anos) at Nobel Algarve British International School. Our Pre-School comprises of two Reception Classrooms and “Sala dos 5 anos” (for the children Following the National Curriculum).

At Nobel Algarve British International School (Nobel Algarve) we are passionate about developing a desire for learning and promoting independence in all the children in our care;

We pride ourselves in providing a learning environment that is ever evolving and designed to be motivating;

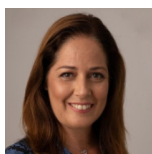
Our staff is committed to working with parents to promote children’s learning and well-being in a happy environment;

We aim to build a positive partnership between home and school as we believe that your child’s interests are served best when home and school work together;

We provide stimulating and challenging opportunities for children to learn through first-hand experiences where possible; we look forward to a long and successful partnership should you choose Nobel Algarve British International School for your child. It would be our pleasure to work with you on the development of your child’s future.

Warm wishes,

Head of Pre-School and Coordinator of 1st and 2nd Cycle



Marisa Nunes

Pre-School Coordinators



Ana Isabel Galvão Morgado Bule



Rakiya Zainabu Bisset



Our School

Our Pre-School Educational aims

We aim for all learners to:

- feel safe and valued as part of a caring community; be independent thinkers / learners who are able to seek solutions creatively and co-operatively;
- inspire an ‘enquiring’ mind and ask questions;
- be confident enough to take risks in learning;
- experience and actively participate in a relevant, enjoyable curriculum that evolves to meet the needs of all;
- be able to listen and articulate responses showing consideration to others;
- be polite and courteous;
- take part in community activities to society that link “real life” to our learning;
- understand and respect diversity;
- develop a sense of self-esteem, be well balanced and healthy individuals.



Our Bi-Lingual Pre-School Curriculum

In Portugal there is an increasing awareness of the importance of Pre-School for the personal and academic success of students, as well as in the overall development of the national educational system. Taking this into account, Pre-School has therefore been considered as the first step towards a solid education.

At Nobel Algarve we want all our children to enjoy their learning whilst at school. We aim to achieve this within a happy, structured and caring environment. Through a variety of teaching and learning methods and strategies, we prepare children for their future school life and we aim to instil in them through INQUIRY an enthusiasm for learning.

Our bilingual Portuguese/English curriculum is based on the Portuguese requirements for bilingual schools “Objetivos de Educação do Pré-Escolar” (PEBI) and the Early Learning Goals (ELGs) from the UK. At the end of Reception, children should be ready to move into Year 1 of the English/ International Primary Section of the school or to the “Sala dos 5 anos class”, leading to “1º Ano” of the Portuguese/National Section (which starts at the age of six).

Motivation is at the heart of ACTIVE LEARNING and children should engage by playing and exploring. Consequently, INQUIRY is at the centre of our bilingual programme.

1. All useful information, internal documents and communication with parents occurs on our platform SEI.
2. Progress reports are shared with SEI every semester and Parent-Teacher meetings once a term.
3. Parents may meet with teachers every Thursday from 3.40pm to 4.25pm.





Early Learning Goals (UK)

1. Communication and Languages (English and Portuguese) Development:

ELG 1. Listening, Attention and Understanding

ELG 2. Speaking

2. Physical Development:

ELG 3. Gross Motor Skills

ELG 4. Fine Motor Skills

3. Personal, Social and Emotional Development:

ELG 5. Self-Regulation

ELG 6. Managing Self

ELG 7. Building Relationships

4. Literacy

ELG 8. Comprehension

ELG 9. Word Reading

ELG 10. Writing

5. Mathematics

ELG11. Number

ELG 12. Numerical Patterns





6. Understanding of the world:

ELG13. Past and Present

ELG14. People, Culture and Communities

ELG 15. The Natural World

7. Expressive Arts and Design:

ELG16. Creating with Materials

ELG 17. Being Imaginative and Expressive

Our curriculum develops young learners who are confident, responsible, reflective, innovative and engaged. Children are mainly taught by their own class teacher, supported by a qualified assistant, and some curriculum areas such as sport and music are taught by specialists. Children are accompanied by an assistant during these specialist lessons.

Outdoor Learning Environment (OLE) programme:

As a complement to small projects developed in the classroom during science classes, eg. growing plants from seeds, the children have OLE/Forest School classes once a week in the school gardens. Later on in their school life at Nobel Algarve British International School these activities lead, into the Forest School project and subsequently into the Duke of Edinburgh Awards.





General objectives of Pre-School Education:

1. Promote the child's personal and social development based on life as democratic experiences in an educational perspective for citizenship;
2. Encourage the inclusion of the child in diverse social groups, regarding various cultures, favouring a progressive consciousness as a member of society;
3. Contribute to an equal opportunity to join the school and to the success of learning;
4. Stimulate the child's general development regarding individual characteristics, instilling behaviours which promote favourable significant learning;
5. Develop expression and communication through various languages as a means of relating, informing, awareness and understanding of the world;
6. Awaken and nurture curiosity and critical thinking skills;
7. Offer the child a feeling of wellbeing and security, namely in the scope of personal and group health;
8. Identify any specific learning needs and promote a better learning experience for the child;
9. Encourage participation of the families in their child's education and establish a relationship with the community.





Specialist Subjects

Children are accompanied by their classroom assistant during these activities.

Music

Music at Nobel Algarve British International School is rich and varied and taught by a specialized teacher. All children have the potential to develop their musical abilities and diverse learning experiences are key to children's individual development. The classes are dynamic and creative, allowing the development of vocal, auditory, instrumental, rhythmic and movement skills, appropriate to the age group. Throughout the year there are several opportunities for children to show their musical skills and learning.

Information and Communication Technology (ICT)

The integration of Information and Communication Technologies in Pre-School Education is an asset nowadays, as it will value the personal and social development of each child. It is important to develop expression and communication through multiple languages as a means of relating, information, aesthetic sensibility and understanding of the world. The interaction with technology provides the child with a better cognitive/social development and the acquisition of new skills that result from the use of the available computer applications.

Physical Education (P.E)

At pre-school age, physical activity is not just fun, but also a fundamental part of a child's healthy development. Our PE classes are designed to nurture not only their growing bodies, but also their curious minds. With a playful approach adapted to their needs, it promotes movement, fundamental motor skills, socialisation and fun.





Our Pre-School Day

Our Pre-School day begins at 9.15am prompt and all children should arrive at school by 9.10am. Our Pre-School activities finishes at 4.30pm and VivaHub after school clubs are available for our children from 4.30 pm.

	Monday	Tuesday	Wednesday	Thursday	Friday
9.15-10am	English Language	English Language	English Language	English Language	English/Show and Tell
10-10.40am	Portuguese Language	Portuguese Language	Library in English or Portuguese	Portuguese Language	Portuguese Language
10.40-11.15am	Play				
11.15-12pm	Music (in Portuguese)	Mathematics	Music (in Portuguese)	Mathematics	ICT*
12-12.30pm	Lunch				
12.30-1pm	Play				
2 – 2.45pm	Mathematics	PE in English	*STEAM	PE in English	OLE (Outdoor Learning/ Forest School)
2.45 – 3.30pm	Social Studies	Arts	Science in English	Social Studies	OLE
3.30-3.45pm	Play				
3.45 – 4.30pm	Golden Time	Golden Time	Golden Time	Golden Time	Golden Time
Notes:				(3.40- 4.25pm parents welcome to meet the class teacher)	

· 3 year old class – Nap Time (optional) 1pm to 2pm

*STEAM = Science, Technology, Engineering, Arts, or Mathematics

*ICT= Information and Communication Technology



Pre-School Rules

In order to ensure fairness to all children in the Pre-School, and to create consistency across all classes, please note the following guidelines which applies to everyone.

1. School Hours

- 1.1 Pre-School is open from 8.30am to 6pm
- 1.2 All children must arrive by 9.10am
- 1.3 Classes take place between 9.15 and 4.30pm

2. Parents' Meetings

All teachers and assistants/carers are available on Thursdays between 3.40 and 4.25pm in their classrooms to talk to parents.

3. School Day

- 3.1 It is important to adhere to the school hours mentioned in point 1 above. Parents are requested to kindly ensure that children arrive at school by 9.10am to avoid disturbing the class activities already taking place. A settled start to the day is important for everyone.
- 3.2 During school hours parents should do not remain in the Pre-School area, unless it is necessary, namely if it is requested by the teacher.

4. Health Rules

- 4.1 If a child has a temperature of 37.5C or higher, parents will be contacted and advised to collect the child.
- 4.2 Should the child have an upset stomach he/she will be advised to stay home until such time that he/she is fully recovered even if under medication.
- 4.3 In the case of headlice, children will be advised not be at school and only to return once the problem has been completely resolved.
- 4.4 In the case of contagious illnesses and, depending on its severity, children will be asked not be at school and to only return when a doctor's

declaration is given stating that the illness will not put the child's and other children's health at risk.

- 4.5 Should a child be on medication whilst at school, parents must hand the medication, together with the respective medical prescription and administering instructions, to the school nurse.

5. Hygiene and Security

- 5.1 Children must always have clean and short nails, to avoid getting hurt and to maintain good personal hygiene.
- 5.2 Children may not wear jewellery (chains, etc.) to school. Should this not be complied with, the school is not responsible for any bodily harm or damage caused.
- 5.3 Should a parent wish to have his/her child collected by another person other than him/herself, a written authorisation must be sent to school with the name of the person collecting the child.

6. Others

- 6.1 Uniform is compulsory in Pre-School. For PE, the use of the PE uniform is also obligatory.
- 6.2 Bibs are required for lunch time for 3 year olds.
- 6.3 We advise the use of shoes closing with Velcro so that children can act independently.
- 6.4 Children attending the Pre-School/3 years class must be toilet-trained and no longer use nappies during the day, and must be able to drink from a glass.
- 6.5 All food for Pre-School students has to be provided by the school.



School Uniform in the Pre-School

The main uniform items can be purchased from our school shop. All payments at the school shop should be made in cash or by debit card. Credit cards are not accepted.

Due to the winters in the Algarve being quite mild, some children choose to wear shorts all winter - there is no restriction on wearing summer / winter clothes.

The children should simply be comfortable and smart, and all clothes should be labelled with their name.

- White polo, short or long-sleeves with school logo
- Trousers or knee-length shorts, with school logo, skirts for girls
- Navy winter hat or cap with school logo
- Hoodie with school logo
- Coats must be of a dark blue colour
- Children may wear trainers or shoes to school - they should be comfortable and practical, and not open-toed.
- It is compulsory to wear the school cap or hat in

PE Kit

- Blue T-shirt with school logo
- Navy shorts or jogging bottoms with school logo

At all special school events, and when students are representing the school, they must wear the school shorts, trousers or skirt and the white school shirt or polo shirt. PE kit is not allowed at these events and footwear must be appropriate for these occasions.

On the days children have PE lessons, they are able to come to school that day in their PE kit and remain in it all day.





VivaHUB After School Clubs

A wide range of after-school clubs and activities are available throughout the year. We work hard to respond to the children's interests and offer opportunities to try new activities and to develop new skills.

Examples of our paid VivaHUB clubs include: Ballet, Yoga, Gymnastics, Football, Culinary Club, Fun Science and more.

Partnership with Parents

We believe the education of a child is a partnership between parents and school. It is vital, therefore, that there are strong links between home and school.

Parents are invited to a Curriculum Information meeting at the beginning of the school year where the class teacher gives an overview of the class plans for the year as well as more practical information about the class activities and timetables.

Please do not let minor problems become major ones. You are always welcome to come in to talk to us and together we can talk through any issues and find solutions. Please see your child's class teacher as soon as possible if you have any concerns. Children learn best when they are happy and feel secure at school.

Nobel Parent's Committee - NPC

The Nobel Parents' Committee (NPC) is the group through which the school and parents work together

on important issues. There are eight parents in the group, elected through a public vote: Cecília Abecassis; Empis Cowlard; Nick Alter; Mark Cathersides; Emily Hollingum; Haley Howie;; Henri Lambriex; Lucy Musk and Rachid Tair.

The NPC has a number of sub-committees, for which all parents are welcome to volunteer. Details of the sub-committees and how you can get involved will be provided in September. In addition to the NPC, each class will have a Class Representative, a volunteer chosen in the first week of school. The Class Representative will be your first contact for any day-to-day questions and class related items.

The NPC is happy to help and advise new parents, especially those new to the area. The NPC can be contacted via email at:

npc.lagoa@nobelalgarve.com



Useful Contacts

Function	Name	Email Address
Whole School		
Head of School	Ian Temple	ian.temple@nobelalgarve.com
Head of Primary	Andrew Beavon	andrew.beavon@nobelalgarve.com
Designated Safeguarding Officer	Nadia Cann	nadia.cann@nobelalgarve.com
National Section		
Head of National Section	Francisco Claro	francisco.claro@nobelalgarve.com
Deputy Head	Paula Lourenço	paula.lourenco@nobelalgarve.com
Head of Pre-School and Coordinator of 1 st & 2 nd Cycle	Marisa Nunes	marisa.nunes@nobelalgarve.com

Other useful contacts:

Front Office	Paula Cristino	frontoffice@nobelalgarve.com secretaria@nobelalgarve.com
Uniform	Lucia Fonte	lucia.fonte@nobelalgarve.com
Infirmary	Cláudia Rocha	claudia.rocha@nobelalgarve.com
Lunch Menu Options	Específico Escola	food.option@nobelalgarve.com
VivaHUB After School	Filipa Magalhães	vivahub@nobelalgarve.com
IT Support	Fernando Silva	helpdesk@nobelalgarve.com

Telephone contacts:

Front Office: (+351) 282 342 547 (Paula Cristino)

Pre-School: (+351) 912 526 702 (Teachers)

