

LEA Name : Mifflinburg Area SD  
Address : 178 Maple St  
Mifflinburg , PA 17844

County : Union  
AUN Number : 116605003  
LEA Type : SD

## Annual Financial Report Accuracy Certification Statement

For Fiscal Year Ending

**6/30/2024**

Pennsylvania Department of Education

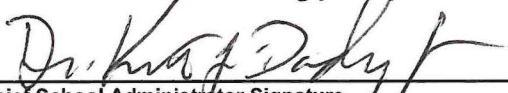
&

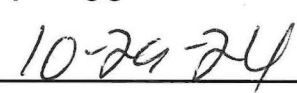
Office of Comptroller Operations

PDE-2056: Intermediate Unit

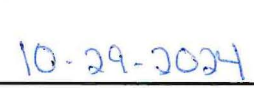
PDE-2057: School District, AVTS/CTC, Charter School,  
and Special Program Jointure

**CERTIFICATION: By signing this page I agree that the electronic data submitted is a complete and accurate statement of the financial operations and status of the local education agency for the fiscal year. It has been prepared in accordance with generally accepted accounting principles and established Commonwealth of PA reporting guidelines.**

  
\_\_\_\_\_  
Chief School Administrator Signature

  
\_\_\_\_\_  
Date

  
\_\_\_\_\_  
Board Secretary Signature

  
\_\_\_\_\_  
Date

Renee M Jilinski

\_\_\_\_\_  
Contact Person

rjilinski@mifflinburg.org

\_\_\_\_\_  
Contact Person E-mail Address

(570)966-8207

Ext :

\_\_\_\_\_  
Contact Person Telephone Number

(570)966-8210

\_\_\_\_\_  
Contact Person Fax Number

**Audit Certification**  
**Annual Financial Report:**  
For Fiscal Year Ending **6/30/2024**  
**(Pursuant to PA School Code Section 218(b))**

LEA Name : Mifflinburg Area SD  
AUN Number : 116605003  
County : Union

<b>Audit Certification Due:</b> 12/31/2024
---

This certification is applicable to the Annual Financial Report data submitted through the Consolidated Financial Reporting System (CFRS).

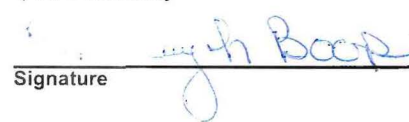
CERTIFICATION: By signing this page I agree that the financial statements of the school have been properly audited as noted above pursuant to Article XXIV, and in the auditor's professional opinion, the Annual Financial Report (PDE-2057) submitted through CFRS is materially consistent with the audited financial statements.

Chief School Administrator

  
Signature

10-29-24  
Date

Board Secretary

  
Signature

10-29-2024  
Date

Renee M Jilinski

Contact Person

rjilinski@mifflinburg.org

Contact Person E-mail Address

(570)966-8207

Ext :

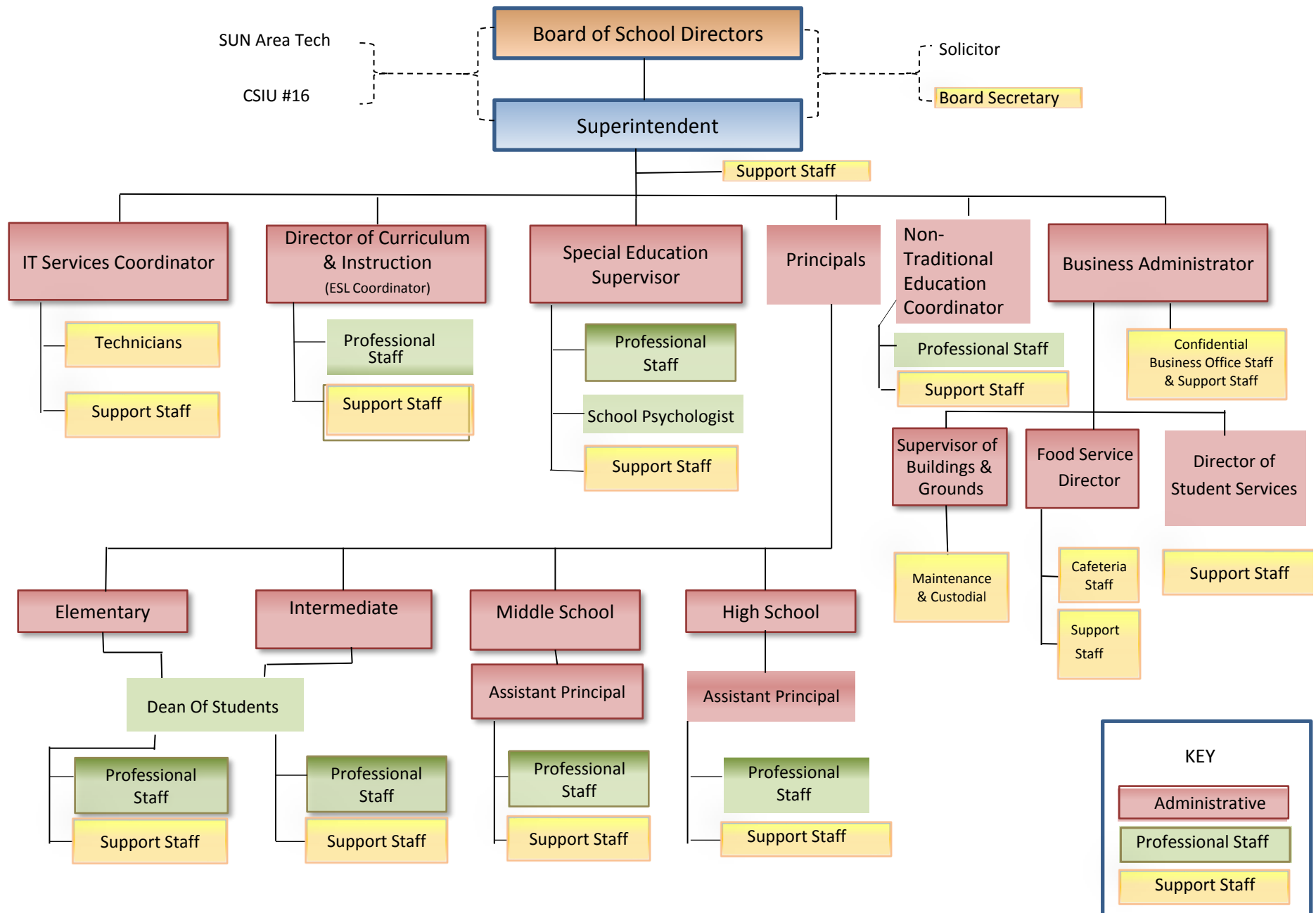
Contact Person Telephone Number

(570)966-8210

Contact Person Fax Number

**MIFFLINBURG AREA SCHOOL DISTRICT**  
**Administrative Organizational Chart**

**008**  
**LOCAL BOARD PROCEDURES**  
 REVISED:





Book	Policy Manual
Section	600 Finances
Title	GASB 34 Statement
Code	622
Status	Active
Adopted	May 8, 2001
Last Revised	December 6, 2022

### **Purpose**

The Board recognizes the need to implement the required accounting and financial reporting standards stipulated by the PA Department of Education.

The primary objectives of implementing the GASB Statement 34 are to assure compliance with state requirements, and properly account for both the financial and economic resources of the district.

### **Authority**

Participation of the school district in any such activity shall be in accordance with Board policy.[\[1\]](#)[\[2\]](#)

### **Delegation of Responsibility**

The responsibility to coordinate the compilation and preparation of all information necessary to implement this policy is delegated to the Business Administrator.

The Business Administrator shall be responsible for the implementing of the necessary procedures to establish and maintain a fixed asset inventory, including depreciation schedules. A schedule of accumulated depreciation shall be consistent from year to year. The basis for depreciation, including groups of assets and useful lives, shall be in writing and available for review upon request.

The Superintendent and Business Administrator shall prepare the required Management Discussion and Analysis (MD&A) in accordance with GASB No. 52 "Required Supplementary Information." The MD&A shall be in the form required by GASB Statement 34 and shall be submitted to the Board in the annual financial report for approval, prior to publication.

Prior to submission of the MD&A for Board approval, the district's independent auditors shall review the MD&A, in accordance with SAS No. 52, "Required Supplementary Information".

### **Guidelines**

In order to associate debt with acquired assets, and to avoid net asset deficit, any asset that has been acquired with debt proceeds shall be capitalized, regardless of the cost of the asset. The asset life of these assets shall be considered relative to the time of the respective debt amortizations.

For all other assets not acquired by debt proceeds, the dollar value of any single item for inclusion in the fixed assets accounts shall be not less than \$5,000 and have an estimated useful life of one (1) year or more.

Assets that fall below the capitalization threshold for GASB 34 reporting purposes may still be significant for insurance, warranty service, and obsolescence/replacement tracking purposes. The district may record and maintain these non-GASB 34 asset inventories in subsidiary ledgers. An outside agency shall conduct an independent inventory of all district assets no less than every five (5) fiscal years.

Capital assets should be depreciated over their useful lives as determined for each asset class. Land, and some land improvements are considered inexhaustible, and are therefore not subject to depreciation.

Donated capital assets must be reported as fair market value plus ancillary charges, if any, at time of donation. Donated assets are recorded as contributed capital and depreciated over their useful lives, as determined for each asset class. If determining historical costs is not practical due to inadequate records, reporting should be based on estimates of fair market



value at the date of donation.

Legal

[1. 24 P.S. 218](#)

[2. 24 P.S. 613](#)

<u>Val Number</u>	<u>Description</u>	<u>Justification</u>
30116	Revenue Detail: A large amount has been reported as Earnings on Investments in Fund 32, account 6500, which should only include interest and/or dividend earnings. Correct or provide a brief explanation of the revenue reported.  Revenue Detail 6500, Fund 32: \$92,797.27	Dividends received during FY24 for PSDLAF Cap Reserve Account.
50450	SESS - 2350 Legal and Accounting Services: SESS Schedule amounts for Special Education vary from prior year by 40% or more. Correct the data or enter a justification.  SESS Schedule 2350: \$11,070.13 Prior Year SESS Schedule 2350: \$6,655.00	Legal services for items related to Special Education were assigned a special cost center in FY24 to increase tracking of these costs.

LEA : 116605003      Mifflinburg Area SD

Printed 10/29/2024 3:09:35 PM

Amounts Expressed in Whole Dollars		<u>General Fund</u> <u>(10)</u>	<u>Student Sponsored</u> <u>Activity Fund</u> <u>(21)</u>	<u>Public Purpose Trust</u> <u>(27)</u>	<u>Other Compt Approved</u> <u>(28)</u>	<u>Athletic / Activity</u> <u>(29)</u>
<b>Assets And Deferred Outflows Of Resources</b>						
<b>Assets</b>						
0100	Cash and Cash Equivalents	19,879,423	147,488	505		
0110	Investments			337,779		
0120	Taxes Receivable	586,745				
0130	Due From Other Funds	8,448				
0141	Due From Other Governments					
0142	State Revenue Receivable	1,068,284				
0143	Federal Revenue Receivable	473,712				
0145	Other Intergovernmental Revenue Receivable					
0146	Due from Primary Government					
0147	Due from Component Unit					
0150	Other Receivables	258,152				
0170	Inventories	40,000				
0180	Prepaid Expenses (Expenditures)					
0190	Other Current Assets					
<b>Total Assets</b>		<b>\$22,314,764</b>	<b>\$147,488</b>	<b>\$338,284</b>		
0910	Deferred Outflows of Resources					
<b>Total Assets And Deferred Outflows Of Resources</b>		<b>\$22,314,764</b>	<b>\$147,488</b>	<b>\$338,284</b>		

LEA : 116605003     Mifflinburg Area SD

Printed 10/29/2024 3:09:35 PM

Amounts Expressed in Whole Dollars		<u>Capital Reserve (690.</u> <u>1850)</u> <u>(31)</u>	<u>Capital Reserve (1431)</u> <u>(32)</u>	<u>Other Capital Projects</u> <u>Fund</u> <u>(39)</u>	<u>Debt Service</u> <u>(40)</u>	<u>Permanent</u> <u>(90)</u>
<b>Assets And Deferred Outflows Of Resources</b>						
<b>Assets</b>						
0100	Cash and Cash Equivalents		2,864,719			
0110	Investments					
0120	Taxes Receivable					
0130	Due From Other Funds					
0141	Due From Other Governments					
0142	State Revenue Receivable					
0143	Federal Revenue Receivable					
0145	Other Intergovernmental Revenue Receivable					
0146	Due from Primary Government					
0147	Due from Component Unit					
0150	Other Receivables					
0170	Inventories					
0180	Prepaid Expenses (Expenditures)					
0190	Other Current Assets					
<b>Total Assets</b>			<b>\$2,864,719</b>			
0910	Deferred Outflows of Resources					
<b>Total Assets And Deferred Outflows Of Resources</b>			<b>\$2,864,719</b>			

LEA : 116605003     Mifflinburg Area SD

Printed 10/29/2024 3:09:35 PM

Amounts Expressed in Whole Dollars		<u>Total Governmental</u>
		<u>Funds</u>
<b>Assets And Deferred Outflows Of Resources</b>		
<b>Assets</b>		
0100	Cash and Cash Equivalents	22,892,135
0110	Investments	337,779
0120	Taxes Receivable	586,745
0130	Due From Other Funds	8,448
0141	Due From Other Governments	
0142	State Revenue Receivable	1,068,284
0143	Federal Revenue Receivable	473,712
0145	Other Intergovernmental Revenue Receivable	
0146	Due from Primary Government	
0147	Due from Component Unit	
0150	Other Receivables	258,152
0170	Inventories	40,000
0180	Prepaid Expenses (Expenditures)	
0190	Other Current Assets	
<b>Total Assets</b>		<b>\$25,665,255</b>
0910	Deferred Outflows of Resources	
<b>Total Assets And Deferred Outflows Of Resources</b>		<b>\$25,665,255</b>

LEA : 116605003     Mifflinburg Area SD

Printed 10/29/2024 3:09:35 PM

Amounts Expressed in Whole Dollars	<u>General Fund</u> <u>(10)</u>	<u>Student Sponsored</u> <u>Activity Fund</u> <u>(21)</u>	<u>Public Purpose Trust</u> <u>(27)</u>	<u>Other Compt Approved</u> <u>(28)</u>	<u>Athletic / Activity</u> <u>(29)</u>
<b>Liabilities And Deferred Inflows Of Resources And Fund Balances</b>					
<b>Liabilities</b>					
0400 Due to Other Funds		6,599			
0411 Due to Other Governments					
0412 Due to Primary Government					
0413 Due to Component Unit					
0420 Accounts Payable	696,234	6,502			
0430 Contracts Payable					
0440 Current Portion of Long-Term Debt					
0450 Short-Term Payables					
0461 Accrued Salaries and Benefits	2,004,523				
0462 Payroll Deductions and Withholding	1,212,119				
0480 Unearned Revenues	7,269				
0490 Other Current Liabilities					
<b>Total Liabilities</b>	<b>\$3,920,145</b>	<b>\$13,101</b>			
0950 Deferred Inflows of Resources	338,133				
<b>Fund Balances</b>					
0810 Nonspendable Fund Balance	40,000				
0820 Restricted Fund Balance					
0830 Committed Fund Balance	10,700,001				
0840 Assigned Fund Balance	4,400,000	134,387	338,284		
0850 Unassigned Fund Balance	2,916,485				
<b>Total Fund Balances</b>	<b>\$18,056,486</b>	<b>\$134,387</b>	<b>\$338,284</b>		
<b>Total Liabilities, Deferred Inflows Of Resources And Fund Balances</b>	<b>\$22,314,764</b>	<b>\$147,488</b>	<b>\$338,284</b>		

LEA : 116605003     Mifflinburg Area SD

Printed 10/29/2024 3:09:35 PM

Amounts Expressed in Whole Dollars		<u>Capital Reserve (690.</u> <u>1850)</u> <u>(31)</u>	<u>Capital Reserve (1431)</u> <u>(32)</u>	<u>Other Capital Projects</u> <u>Fund</u> <u>(39)</u>	<u>Debt Service</u> <u>(40)</u>	<u>Permanent</u> <u>(90)</u>
<b>Liabilities And Deferred Inflows Of Resources And Fund Balances</b>						
<b>Liabilities</b>						
0400	Due to Other Funds					
0411	Due to Other Governments					
0412	Due to Primary Government					
0413	Due to Component Unit					
0420	Accounts Payable		171,389			
0430	Contracts Payable					
0440	Current Portion of Long-Term Debt					
0450	Short-Term Payables					
0461	Accrued Salaries and Benefits					
0462	Payroll Deductions and Withholding					
0480	Unearned Revenues					
0490	Other Current Liabilities					
<b>Total Liabilities</b>			<b>\$171,389</b>			
0950	Deferred Inflows of Resources					
<b>Fund Balances</b>						
0810	Nonspendable Fund Balance					
0820	Restricted Fund Balance					
0830	Committed Fund Balance		2,193,330			
0840	Assigned Fund Balance		500,000			
0850	Unassigned Fund Balance					
<b>Total Fund Balances</b>			<b>\$2,693,330</b>			
<b>Total Liabilities, Deferred Inflows Of Resources And Fund Balances</b>			<b>\$2,864,719</b>			



LEA : 116605003      Mifflinburg Area SD

Printed 10/29/2024 3:09:35 PM

Amounts Expressed in Whole Dollars		<u>Total Governmental</u> <u>Funds</u>
<b>Liabilities And Deferred Inflows Of Resources And Fund Balances</b>		
<b>Liabilities</b>		
0400 Due to Other Funds		6,599
0411 Due to Other Governments		
0412 Due to Primary Government		
0413 Due to Component Unit		
0420 Accounts Payable		874,125
0430 Contracts Payable		
0440 Current Portion of Long-Term Debt		
0450 Short-Term Payables		
0461 Accrued Salaries and Benefits		2,004,523
0462 Payroll Deductions and Withholding		1,212,119
0480 Unearned Revenues		7,269
0490 Other Current Liabilities		
<b>Total Liabilities</b>		<b>\$4,104,635</b>
0950 Deferred Inflows of Resources		338,133
<b>Fund Balances</b>		
0810 Nonspendable Fund Balance		40,000
0820 Restricted Fund Balance		
0830 Committed Fund Balance		12,893,331
0840 Assigned Fund Balance		5,372,671
0850 Unassigned Fund Balance		2,916,485
<b>Total Fund Balances</b>		<b>\$21,222,487</b>
<b>Total Liabilities, Deferred Inflows Of Resources And Fund Balances</b>		<b>\$25,665,255</b>

Amounts Expressed in Whole Dollars	<u>General Fund</u> <u>(10)</u>	<u>Student Sponsored</u> <u>Activity Fund</u> <u>(21)</u>	<u>Public Purpose Trust</u> <u>(27)</u>	<u>Other Compt Approved</u> <u>(28)</u>	<u>Athletic / Activity</u> <u>(29)</u>
Revenues					
6000 Revenue from Local Sources	22,427,004	158,917	48,190		
7000 Revenue from State Sources	16,939,575				
8000 Revenue from Federal Sources	1,089,273				
Total Revenues	\$40,455,852	\$158,917	\$48,190		
Expenditures					
1000 Instruction	21,875,915				
2000 Support Services	11,470,210		140		
3000 Operation of Non-Instructional Services	833,032	177,158	41,663		
4000 Facilities Acquisition, Construction and Improvement Services	136,901				
5110 Debt Service	2,402,363				
5130 Refund of Prior Year Revenues / Receipts					
5140 Leases and Other Right-to-Use Arrangements					
Total Expenditures	\$36,718,421	\$177,158	\$41,803		
Excess (Deficiency) Of Revenues Over Expenditures	\$3,737,431	(\$18,241)	\$6,387		
Other Financing Sources (Uses)					
9110 Face Value of Bonds Issued					
9120 Proceeds from Refunding of Bonds					
9130 Bond Premiums					
9200 Proceeds from Extended Term Financing, Leases, and Other Right-to-Use Arrangements					
9300 Interfund Transfers - IN	11,921				
9400 Sale of or Compensation for Loss of Fixed Assets					
9710 Transfers from Component Units					
9720 Transfers from Primary Governments					
9910 Other Financing Sources Not Listed in the 9000 Series					
9990 Insurance Recoveries	5,095				
5120 Debt Service – Refunded Bonds					
5150 Bond Discounts					
5200 Interfund Transfers – Out	1,550,000	11,921			
5300 Transfers Out to Component Units/Primary Governments					
Total Other Financing Sources (Uses)	(\$1,532,984)	(\$11,921)			

Amounts Expressed in Whole Dollars		<u>Capital Reserve (690.</u> <u>1850)</u> <u>(31)</u>	<u>Capital Reserve (1431)</u> <u>(32)</u>	<u>Other Capital Projects</u> <u>Fund</u> <u>(39)</u>	<u>Debt Service</u> <u>(40)</u>	<u>Permanent</u> <u>(90)</u>
<b>Revenues</b>						
6000	Revenue from Local Sources		92,797			
7000	Revenue from State Sources					
8000	Revenue from Federal Sources					
<b>Total Revenues</b>			<b>\$92,797</b>			
<b>Expenditures</b>						
1000	Instruction					
2000	Support Services					
3000	Operation of Non-Instructional Services					
4000	Facilities Acquisition, Construction and Improvement Services		187,393			
5110	Debt Service					
5130	Refund of Prior Year Revenues / Receipts					
5140	Leases and Other Right-to-Use Arrangements					
<b>Total Expenditures</b>			<b>\$187,393</b>			
<b>Excess (Deficiency) Of Revenues Over Expenditures</b>			<b>(\$94,596)</b>			
<b>Other Financing Sources (Uses)</b>						
9110	Face Value of Bonds Issued					
9120	Proceeds from Refunding of Bonds					
9130	Bond Premiums					
9200	Proceeds from Extended Term Financing, Leases, and Other Right-to-Use Arrangements					
9300	Interfund Transfers - IN		1,450,000			
9400	Sale of or Compensation for Loss of Fixed Assets					
9710	Transfers from Component Units					
9720	Transfers from Primary Governments					
9910	Other Financing Sources Not Listed in the 9000 Series					
9990	Insurance Recoveries					
5120	Debt Service – Refunded Bonds					
5150	Bond Discounts					
5200	Interfund Transfers – Out					
5300	Transfers Out to Component Units/Primary Governments					
<b>Total Other Financing Sources (Uses)</b>			<b>\$1,450,000</b>			

Amounts Expressed in Whole Dollars		<u>Total Governmental Funds</u>
<b>Revenues</b>		
6000	Revenue from Local Sources	22,726,908
7000	Revenue from State Sources	16,939,575
8000	Revenue from Federal Sources	1,089,273
<b>Total Revenues</b>		<b>\$40,755,756</b>
<b>Expenditures</b>		
1000	Instruction	21,875,915
2000	Support Services	11,470,350
3000	Operation of Non-Instructional Services	1,051,853
4000	Facilities Acquisition, Construction and Improvement Services	324,294
5110	Debt Service	2,402,363
5130	Refund of Prior Year Revenues / Receipts	
5140	Leases and Other Right-to-Use Arrangements	
<b>Total Expenditures</b>		<b>\$37,124,775</b>
<b>Excess (Deficiency) Of Revenues Over Expenditures</b>		<b>\$3,630,981</b>
<b>Other Financing Sources (Uses)</b>		
9110	Face Value of Bonds Issued	
9120	Proceeds from Refunding of Bonds	
9130	Bond Premiums	
9200	Proceeds from Extended Term Financing, Leases, and Other Right-to-Use Arrangements	
9300	Interfund Transfers - IN	1,461,921
9400	Sale of or Compensation for Loss of Fixed Assets	
9710	Transfers from Component Units	
9720	Transfers from Primary Governments	
9910	Other Financing Sources Not Listed in the 9000 Series	
9990	Insurance Recoveries	5,095
5120	Debt Service – Refunded Bonds	
5150	Bond Discounts	
5200	Interfund Transfers – Out	1,561,921
5300	Transfers Out to Component Units/Primary Governments	
<b>Total Other Financing Sources (Uses)</b>		<b>(\$94,905)</b>

Amounts Expressed in Whole Dollars		<u>General Fund</u> <u>(10)</u>	<u>Student Sponsored</u> <u>Activity Fund</u> <u>(21)</u>	<u>Public Purpose Trust</u> <u>(27)</u>	<u>Other Compt Approved</u> <u>(28)</u>	<u>Athletic / Activity</u> <u>(29)</u>
<b>Special And Extraordinary Items</b>						
9920 Special Items – Gains						
9930 Extraordinary Items – Gains						
5520 Special Items – Losses						
5530 Extraordinary Items – Losses						
<b>Net Change In Fund Balances</b>		<b>\$2,204,447</b>	<b>(\$30,162)</b>	<b>\$6,387</b>		
<b>Fund Balance</b>						
0001 Fund Balance - Beginning of Fiscal Year		15,852,040	164,547	331,897		
<b>Fund Balance - End Of Year</b>		<b>\$18,056,487</b>	<b>\$134,385</b>	<b>\$338,284</b>		

Amounts Expressed in Whole Dollars		<u>Capital Reserve (690.</u> <u>1850)</u> <u>(31)</u>	<u>Capital Reserve (1431)</u> <u>(32)</u>	<u>Other Capital Projects</u> <u>Fund</u> <u>(39)</u>	<u>Debt Service</u> <u>(40)</u>	<u>Permanent</u> <u>(90)</u>
<b>Special And Extraordinary Items</b>						
9920	Special Items – Gains					
9930	Extraordinary Items – Gains					
5520	Special Items – Losses					
5530	Extraordinary Items – Losses					
<b>Net Change In Fund Balances</b>			<b>\$1,355,404</b>			
<b>Fund Balance</b>						
0001	Fund Balance - Beginning of Fiscal Year		1,337,926			
<b>Fund Balance - End Of Year</b>			<b>\$2,693,330</b>			

Amounts Expressed in Whole Dollars		<u>Total Governmental</u> <u>Funds</u>
<b>Special And Extraordinary Items</b>		
9920	Special Items – Gains	
9930	Extraordinary Items – Gains	
5520	Special Items – Losses	
5530	Extraordinary Items – Losses	
<b>Net Change In Fund Balances</b>		<b>\$3,536,076</b>
<b>Fund Balance</b>		
0001	Fund Balance - Beginning of Fiscal Year	17,686,410
<b>Fund Balance - End Of Year</b>		<b>\$21,222,486</b>



LEA : 116605003     Mifflinburg Area SD

Printed 10/29/2024 3:09:44 PM

Amounts Expressed in Whole Dollars		<u>Food Service</u> (51)	<u>Child Care</u> <u>Operations</u> (52)	<u>Other Enterprise</u> (58)	<u>TOTAL</u>	<u>Internal Service</u> (60)
<b>Assets And Deferred Outflows Of Resources</b>						
<b>Current Assets</b>						
0100	Cash and Cash Equivalents	2,094			2,094	
0110	Investments					
0130	Due From Other Funds					
0141	Due From Other Governments					
0142	State Revenue Receivable					
0143	Federal Revenue Receivable					
0146	Due from Primary Government					
0147	Due from Component Unit					
0150	Other Receivables	138			138	
0170	Inventories	52,929			52,929	
0180	Prepaid Expenses (Expenditures)					
0190	Other Current Assets					
<b>Total Current Assets</b>		<b>\$55,161</b>			<b>\$55,161</b>	
<b>Noncurrent Assets</b>						
0211	Land					
0212	Site Improvements (Net)					
0220	Buildings and Building Improvements (Net)					
0230	Tangible Property and Intangible Right-To-Use Assets (Net)	17,086			17,086	
0250	Construction in Progress					
0260	Long Term Prepayments					
0290	Other Noncurrent Assets					
<b>Total Noncurrent Assets</b>		<b>\$17,086</b>			<b>\$17,086</b>	
0910	Deferred Outflows of Resources					
<b>Total Assets And Deferred Outflows Of Resources</b>		<b>\$72,247</b>			<b>\$72,247</b>	

LEA : 116605003      Mifflinburg Area SD

Printed 10/29/2024 3:09:44 PM

Amounts Expressed in Whole Dollars	<u>Food Service</u> <u>(51)</u>	<u>Child Care</u> <u>Operations</u> <u>(52)</u>	<u>Other Enterprise</u> <u>(58)</u>	<u>TOTAL</u>	<u>Internal Service</u> <u>(60)</u>
<b>Liabilities And Deferred Inflows Of Resources And Net Position</b>					
<b>Current Liabilities</b>					
0400 Due to Other Funds	1,849			1,849	
0411 Due to Other Governments					
0413 Due to Component Unit					
0420 Accounts Payable	58			58	
0430 Contracts Payable					
0440 Current Portion of Long-Term Debt	5,793			5,793	
0450 Short-Term Payables					
0461 Accrued Salaries and Benefits	187			187	
0462 Payroll Deductions and Withholding					
0480 Unearned Revenues	(3,403)			(3,403)	
0490 Other Current Liabilities	38,720			38,720	
<b>Total Current Liabilities</b>	<b>\$43,204</b>			<b>\$43,204</b>	
<b>Noncurrent Liabilities</b>					
0510 Bonds Payable					
0520 Extended-Term Financing Agreements Payable					
0530 Lease and Other Right-To-Use Obligations					
0540 Accumulated Compensated Absences					
0550 Authority Lease Obligations					
0560 Other Post-Employment Benefits (OPEB)					
0570 Net Pension Liability					
0599 Other Noncurrent Liabilities					
<b>Total Noncurrent Liabilities</b>					
<b>Total Liabilities</b>	<b>\$43,204</b>			<b>\$43,204</b>	
0950 Deferred Inflows of Resources					
<b>Net Position</b>					
0791 Net Investment in Capital Assets	158,859			158,859	
0008 Restricted Net Position (0792 – 0798)	15,520			15,520	
0799 Unrestricted Net Position	(145,336)			(145,336)	
<b>Total Net Position</b>	<b>\$29,043</b>			<b>\$29,043</b>	
<b>Total Liabilities And Deferred Inflows Of Resources And Net Position</b>	<b>\$72,247</b>			<b>\$72,247</b>	

Amounts Expressed in Whole Dollars		<u>Food Service</u> <u>(51)</u>	<u>Child Care Operations</u> <u>(52)</u>	<u>Other Enterprise</u> <u>(58)</u>	<u>TOTAL</u>	<u>Internal Service</u> <u>(60)</u>
<b>Operating Revenues</b>						
6600	Food Service Revenue	58,399			58,399	
0071	Charges for Services					
0072	Other Operating Revenue					
<b>Total Operating Revenues</b>		<b>\$58,399</b>			<b>\$58,399</b>	
<b>Operating Expenses</b>						
100	Personnel Services – Salaries	433,382			433,382	
200	Personnel Services – Employee Benefits	234,561			234,561	
300	Purchased Professional and Technical Services	574			574	
400	Purchased Property Services	998			998	
500	Other Purchased Services	2,705			2,705	
600	Supplies	768,157			768,157	
740	Depreciation	8,155			8,155	
770	Amortization Expense					
810	Dues and Fees	998			998	
880	Refunds of Prior Years' Receipts					
890	Miscellaneous Expenditures					
<b>Total Operating Expenses</b>		<b>\$1,449,530</b>			<b>\$1,449,530</b>	
<b>Operating Income (Loss)</b>		<b>(\$1,391,131)</b>			<b>(\$1,391,131)</b>	
<b>Non Operating Revenues (Expenses)</b>						
6500	Earnings on Investments	36			36	
6830	Federal Revenue from Intermediary Sources					
6920	Contributions and Donations from Private Sources					
6930	Gains or Losses on Sale of Fixed Assets					
6991	Refunds of a Prior Year Expenditure					
7000	Revenue from State Sources	186,233			186,233	
8000	Revenue from Federal Sources	910,107			910,107	
9990	Insurance Recoveries					
820	Claims and Judgments Against the LEA					
830	Interest					
<b>TOTAL Non Operating Revenues (Expenses)</b>		<b>\$1,096,376</b>			<b>\$1,096,376</b>	
<b>Income (Loss) Before Contributions And Transfers</b>		<b>(\$294,755)</b>			<b>(\$294,755)</b>	

Amounts Expressed in Whole Dollars	<u>Food Service</u> <u>(51)</u>	<u>Child Care Operations</u> <u>(52)</u>	<u>Other Enterprise</u> <u>(58)</u>	<u>TOTAL</u>	<u>Internal Service</u> <u>(60)</u>
<b>Contributions, Transfers, and Special and Extraordinary Items</b>					
5200 Interfund Transfers – Out					
5300 Transfers Out to Component Units/Primary Governments					
5520 Special Items – Losses					
5530 Extraordinary Items – Losses					
9300 Interfund Transfers - IN	100,000			100,000	
9500 Capital Contributions					
9700 Transfers IN From Component Units/Primary Governments					
9920 Special Items – Gains					
9930 Extraordinary Items – Gains					
<b>Change In Net Position</b>	<b>(\$194,755)</b>			<b>(\$194,755)</b>	
0002 Net Position - Beginning of Fiscal Year	223,798			223,798	
0003 Accounting Changes / Residual Equity Transfers					
<b>Net Position - End Of Year</b>	<b>\$29,043</b>			<b>\$29,043</b>	

LEA : 116605003      Mifflinburg Area SD

Printed 10/29/2024 3:10:00 PM

Amounts Expressed in Whole Dollars		<u>Food Service</u> <u>(51)</u>	<u>Child Care Operations</u> <u>(52)</u>	<u>Other Enterprise</u> <u>(58)</u>	<u>TOTAL</u>	<u>Internal Service(60)</u>
<b>Cash Flows From Operating Activities</b>						
0011	Cash Receipts From Users	69,176			69,176	
0012	Cash Receipts From Assessments Made to Other Funds					
0013	Cash Receipts From Earnings on Investments					
0014	Cash Receipts From Other Operating Revenue					
0015	Cash Payments To Employees For Services	675,549			675,549	
0016	Cash Payments For Insurance Claims					
0017	Cash Payments To Suppliers For Goods and Services	742,842			742,842	
0018	Cash Payments For Other Operating Expenses					
<b>Net Cash Provided By (Used For) Operating Activities</b>		<b>(\$1,349,215)</b>			<b>(\$1,349,215)</b>	
<b>Cash Flows From Non-Capital Financing Activities</b>						
0021	Receipts From Local Sources - 6000					
0022	Receipts From State Sources - 7000	186,233			186,233	
0023	Receipts From Federal Sources -8000	910,107			910,107	
0024	Notes and Loans Received (Repaid)					
0025	Interest Paid on Notes/Loans - 5100-830					
0026	Operating Transfers In (Out)/Residual Equity Trans	100,000			100,000	
0027	Operating Transfers In (Out) Primary Government / Comp Unit					
0028	Receipts From Refund of Prior Year Expenditures - 6991					
0029	Special and Extraordinary Gains (losses)					
0030	Receipts from Insurance Recoveries -9990					
<b>Net Cash Prov By (Used for) Non-Capital Financing Activities</b>		<b>\$1,196,340</b>			<b>\$1,196,340</b>	
<b>Cash Flows From Capital and Related Financing Activities</b>						
0031	Payments For Fac Acq, Const, and Imp - 4000					
0032	Proceeds from Disposal of Capital Assets					
0033	Proceeds From Extended Term Financing - 9200					
0034	Principal Paid on Financing Agreements					
0035	Interest Paid on Financing Agreements - 5100-830					
0036	(Inc) Dec in Contributed Capital					
<b>Net Cash Prov By (Used for) Capital and Related Financing Activities</b>						
<b>Cash Flows From Investing Activities</b>						
0041	Earnings on Investments - 6500	36			36	
0042	Purchase of Inv Securities / Deposits to Inv Pools					
0043	Receipts From Investment Pool Withdrawals					
0044	Proceeds from Sale and Maturity of Inv Securities					

LEA : 116605003      Mifflinburg Area SD

Printed 10/29/2024 3:10:00 PM

0045   Loans Received (Paid)

Net Cash Prov By (Used for) Investing Activities	\$36	\$36
--	------	------

LEA : 116605003      Mifflinburg Area SD

Printed 10/29/2024 3:10:00 PM

	<u>Food Service</u> <u>(51)</u>	<u>Child Care Operations</u> <u>(52)</u>	<u>Other Enterprise</u> <u>(58)</u>	<u>TOTAL</u>	<u>Internal Service</u> <u>(60)</u>
<b>Net Increase (Decrease) in Cash Flows</b>	<b>(152,839)</b>			<b>(152,839)</b>	
0004 Cash and Cash Equivalents Beginning of Year	154,933			154,933	
<b>Cash and Cash Equivalents at Year End</b>	<b>\$2,094</b>			<b>\$2,094</b>	
<hr/>					
<b>Reconciliation of Operating Income (Loss) To Net Cash Provided by (Used For) Operating Activities</b>					
0005 Operating Income (Loss) per REP	(1,391,131)			(1,391,131)	
<b>Adjustments</b>					
0051 Depreciation and Net Amortization	8,155			8,155	
0052 Provision for Uncollectible Accounts					
0053 Other Adjustments					
<b>Effect of Changes in Assets, Liabilities, Deferred Outflows and Deferred Inflows</b>					
0054 (Inc) Dec In Accounts Receivable (0120-0150)	8,928			8,928	
0055 Advances to Other Funds					
0056 (Inc) Dec in Inventories (0170)	27,479			27,479	
0057 (Inc) Dec in Prepaid Expenses (0180)					
0058 (Inc) Dec in Other Current or Noncurrent Assets	1,847			1,847	
0064 Deferred Outflows (0910)					
0059 Inc (Dec) in Accounts Payable (0400-0450)	(162)			(162)	
0060 Inc (Dec) in Accrued Salaries/Benefits (0461)	187			187	
0065 Inc (Dec) in Net Pension Liabilities (0570)					
0066 Inc (Dec) in Other Postemp Benefit Oblig (0560)	(1,375)			(1,375)	
0061 Inc (Dec) in Payroll Deductions/Withholding (0462)					
0062 Inc (Dec) in Unearned Revenue (0480)	(6,256)			(6,256)	
0063 Inc (Dec) in Other Current or Noncurrent Liabilities	3,113			3,113	
0067 Deferred Inflows (0950)					
<b>Total Adjustments</b>	<b>\$41,916</b>			<b>\$41,916</b>	
<b>Cash Provided By (Used for) Total</b>	<b>(\$1,349,215)</b>			<b>(\$1,349,215)</b>	



COMBINED STATEMENT OF CASH FLOWS  
SCHEDULE OF NONCASH INVESTING, CAPITAL, AND FINANCING ACTIVITIES

Explanation of Transaction and Balance Sheet Effect	Amount
Total	

	Revenue Reported In Current Year	Current Year Tax Accrual	Prior Year Tax Accrual	Taxes Collected In Current Year
<b><u>Revenue from Local Sources</u></b>				
6111 Current Real Estate Taxes	13,260,511.98			13,260,511.98
6113 Public Utility Realty Taxes	16,599.97			16,599.97
6114 Payments in Lieu of Current Taxes - State / Local	114,651.51			114,651.51
6120 Current Per Capita Taxes, Section 679	28,128.96			28,128.96
6141 Current Act 511 Per Capita Taxes	52,826.14			52,826.14
6151 Current Act 511 Earned Income Taxes	6,068,675.47			6,068,675.47
6153 Current Act 511 Real Estate Transfer Taxes	384,551.91			384,551.91
6411 Delinquent Real Estate Taxes	618,459.78			618,459.78
6420 Delinquent Per Capita Taxes, Section 679	3,826.64			3,826.64
6440 Delinquent Local Enabling Taxes - Flat Rate Assessments	7,678.19			7,678.19
6500 Earnings on Investments	1,224,610.91			
6700 Revenues from LEA Activities	91,857.60			
6832 Federal IDEA Revenue Received as Pass Through	361,641.20			
6910 Rentals	46,310.48			
6920 Contributions and Donations from Private Sources	32,221.54			
6944 Receipts from Other LEAs in Pennsylvania - Education	28,043.64			
6991 Refunds of a Prior Year Expenditure	697.23			
6999 Other Revenues Not Specified Above	85,710.44			
<b>TOTAL Revenue from Local Sources</b>	<b>\$22,427,003.59</b>			<b>\$20,555,910.55</b>

	Revenue Reported <u>In Current Year</u>			
<b><u>Revenue from State Sources</u></b>				
7111 Basic Education Funding-Formula	9,682,843.79			
7160 Tuition for Orphans Subsidy	9,960.84			
7220 Vocational Education	132,336.40			
7230 Alternative Education	400.00			
7271 Special Education funds for School-Aged Pupils	1,530,919.44			
7311 Pupil Transportation Subsidy	716,825.11			
7312 Nonpublic and Charter School Pupil Transportation Subsidy	43,505.00			
7320 Rental and Sinking Fund Payments / Building Reimbursement Subsidy	285,678.18			
7330 Health Services (Medical, Dental, Nurse, Act 25)	32,112.43			
7340 State Property Tax Reduction Allocation	718,877.67			
7362 School Mental Health & Safety and Security Grants	259,686.00			
7369 Other Safe School Grants	52,200.00			
7505 Ready to Learn Block Grant	354,755.00			
7509 Supplemental Equipment Grants	28,103.87			
7810 State Share of Social Security and Medicare Taxes	414,959.75			
7820 State Share of Retirement Contributions	2,676,411.85			
<b>TOTAL Revenue from State Sources</b>	<b>\$16,939,575.33</b>			

Revenue Reported In Current Year				
Revenue from Federal Sources				
8514 Title I - Improving the Academic Achievement of the Disadvantaged	508,458.00			
8515 Title II - Preparing, Training, and Recruiting High Quality Teachers and Principals	74,251.00			
8516 Title III - Language Instruction for English Learners and Immigrant Students	4,654.90			
8517 Title IV - 21st Century Schools	40,134.00			
8690 Other Restricted Federal Grants-in-Aid Through the Commonwealth of PA	3,639.04			
8743 ESSER II - Elementary and Secondary School Emergency Relief Fund	259,761.65			
8744 ARP ESSER - Elementary and Secondary School Emergency Relief Fund	35,488.58			
8751 ARP ESSER Learning Loss	125,182.01			
8752 ARP ESSER Summer Programs	4,998.07			
8754 ARP ESSER Homeless Children and Youth Funds	12,440.00			
8810 School-Based Access Medicaid Reimbursement Program (SBAP) Reimbursements (Access)	20,265.46			
TOTAL Revenue from Federal Sources	\$1,089,272.71			

			Revenue Reported <u>In Current Year</u>			
<u>Other Financing Sources</u>						
9320	Special Revenue Fund Transfers		11,920.64			
9990	Insurance Recoveries		5,094.70			
<b>TOTAL Other Financing Sources</b>			<b>\$17,015.34</b>			
<b>TOTAL FROM ALL SOURCES</b>			<b>\$40,472,866.97</b>			<b>\$20,555,910.55</b>

LEA : 116605003     Mifflinburg Area SD

Printed 10/29/2024 3:10:08 PM

	<u>General Fund (10)</u>	<u>Student Sponsored Activity Fund (21)</u>	<u>Public Purpose Trust (27)</u>	<u>Other Compt Approved (28)</u>	<u>Athletic / Activity (29)</u>	<u>Capital Reserve (690, 1850) (31)</u>
<b>6000 Revenue from Local Sources</b>						
6111 Current Real Estate Taxes	13,260,511.98					
6113 Public Utility Realty Taxes	16,599.97					
6114 Payments in Lieu of Current Taxes - State / Local	114,651.51					
6120 Current Per Capita Taxes, Section 679	28,128.96					
6141 Current Act 511 Per Capita Taxes	52,826.14					
6151 Current Act 511 Earned Income Taxes	6,068,675.47					
6153 Current Act 511 Real Estate Transfer Taxes	384,551.91					
6411 Delinquent Real Estate Taxes	618,459.78					
6420 Delinquent Per Capita Taxes, Section 679	3,826.64					
6440 Delinquent Local Enabling Taxes - Flat Rate Assessments	7,678.19					
6500 Earnings on Investments	1,224,610.91		20,951.80			
6700 Revenues from LEA Activities	91,857.60	154,671.01				
6832 Federal IDEA Revenue Received as Pass Through	361,641.20					
6910 Rentals	46,310.48					
6920 Contributions and Donations from Private Sources	32,221.54	4,246.39	2,000.00			
6944 Receipts from Other LEAs in Pennsylvania - Education	28,043.64					
6991 Refunds of a Prior Year Expenditure	697.23					
6999 Other Revenues Not Specified Above	85,710.44		25,238.65			
<b>6000 Total Revenue from Local Sources</b>	<b>\$22,427,003.59</b>	<b>\$158,917.40</b>	<b>\$48,190.45</b>			
<b>7000 Revenue from State Sources</b>						
7111 Basic Education Funding-Formula	9,682,843.79					
7160 Tuition for Orphans Subsidy	9,960.84					
7220 Vocational Education	132,336.40					
7230 Alternative Education	400.00					
7271 Special Education funds for School-Aged Pupils	1,530,919.44					
7311 Pupil Transportation Subsidy	716,825.11					
7312 Nonpublic and Charter School Pupil Transportation Subsidy	43,505.00					
7320 Rental and Sinking Fund Payments / Building Reimbursement Subsidy	285,678.18					
7330 Health Services (Medical, Dental, Nurse, Act 25)	32,112.43					
7340 State Property Tax Reduction Allocation	718,877.67					
7362 School Mental Health & Safety and Security Grants	259,686.00					
7369 Other Safe School Grants	52,200.00					
7505 Ready to Learn Block Grant	354,755.00					
7509 Supplemental Equipment Grants	28,103.87					
7810 State Share of Social Security and Medicare Taxes	414,959.75					

LEA : 116605003     Mifflinburg Area SD

Printed 10/29/2024 3:10:08 PM

	<u>Capital Reserve</u> <u>(1431) (32)</u>	<u>Other Capital</u> <u>Projects Fund (39)</u>	<u>Debt Service (40)</u>	<u>Permanent (90)</u>	<u>Total</u>
<b>6000 Revenue from Local Sources</b>					
6111 Current Real Estate Taxes					13,260,511.98
6113 Public Utility Realty Taxes					16,599.97
6114 Payments in Lieu of Current Taxes - State / Local					114,651.51
6120 Current Per Capita Taxes, Section 679					28,128.96
6141 Current Act 511 Per Capita Taxes					52,826.14
6151 Current Act 511 Earned Income Taxes					6,068,675.47
6153 Current Act 511 Real Estate Transfer Taxes					384,551.91
6411 Delinquent Real Estate Taxes					618,459.78
6420 Delinquent Per Capita Taxes, Section 679					3,826.64
6440 Delinquent Local Enabling Taxes - Flat Rate Assessments					7,678.19
6500 Earnings on Investments	92,797.27				1,338,359.98
6700 Revenues from LEA Activities					246,528.61
6832 Federal IDEA Revenue Received as Pass Through					361,641.20
6910 Rentals					46,310.48
6920 Contributions and Donations from Private Sources					38,467.93
6944 Receipts from Other LEAs in Pennsylvania - Education					28,043.64
6991 Refunds of a Prior Year Expenditure					697.23
6999 Other Revenues Not Specified Above					110,949.09
<b>6000 Total Revenue from Local Sources</b>	<b>\$92,797.27</b>				<b>\$22,726,908.71</b>
<b>7000 Revenue from State Sources</b>					
7111 Basic Education Funding-Formula					9,682,843.79
7160 Tuition for Orphans Subsidy					9,960.84
7220 Vocational Education					132,336.40
7230 Alternative Education					400.00
7271 Special Education funds for School-Aged Pupils					1,530,919.44
7311 Pupil Transportation Subsidy					716,825.11
7312 Nonpublic and Charter School Pupil Transportation Subsidy					43,505.00
7320 Rental and Sinking Fund Payments / Building Reimbursement Subsidy					285,678.18
7330 Health Services (Medical, Dental, Nurse, Act 25)					32,112.43
7340 State Property Tax Reduction Allocation					718,877.67
7362 School Mental Health & Safety and Security Grants					259,686.00
7369 Other Safe School Grants					52,200.00
7505 Ready to Learn Block Grant					354,755.00
7509 Supplemental Equipment Grants					28,103.87
7810 State Share of Social Security and Medicare Taxes					414,959.75



LEA : 116605003      Mifflinburg Area SD

Printed 10/29/2024 3:10:08 PM

	<u>General Fund (10)</u>	<u>Student Sponsored Activity Fund (21)</u>	<u>Public Purpose Trust (27)</u>	<u>Other Compt Approved (28)</u>	<u>Athletic / Activity (29)</u>	<u>Capital Reserve (690, 1850) (31)</u>
<b>7000 Revenue from State Sources</b>						
7820 State Share of Retirement Contributions	2,676,411.85					
<b>7000 Total Revenue from State Sources</b>	<b>\$16,939,575.33</b>					
<b>8000 Revenue from Federal Sources</b>						
8514 Title I - Improving the Academic Achievement of the Disadvantaged	508,458.00					
8515 Title II - Preparing, Training, and Recruiting High Quality Teachers and Principals	74,251.00					
8516 Title III - Language Instruction for English Learners and Immigrant Students	4,654.90					
8517 Title IV - 21st Century Schools	40,134.00					
8690 Other Restricted Federal Grants-in-Aid Through the Commonwealth of PA	3,639.04					
8743 ESSER II - Elementary and Secondary School Emergency Relief Fund	259,761.65					
8744 ARP ESSER - Elementary and Secondary School Emergency Relief Fund	35,488.58					
8751 ARP ESSER Learning Loss	125,182.01					
8752 ARP ESSER Summer Programs	4,998.07					
8754 ARP ESSER Homeless Children and Youth Funds	12,440.00					
8810 School-Based Access Medicaid Reimbursement Program (SBAP) Reimbursements (Access)	20,265.46					
<b>8000 Total Revenue from Federal Sources</b>	<b>\$1,089,272.71</b>					
<b>9000 Other Financing Sources</b>						
9310 General Fund Transfers						
9320 Special Revenue Fund Transfers	11,920.64					
9990 Insurance Recoveries	5,094.70					
<b>9000 Total Other Financing Sources</b>	<b>\$17,015.34</b>					
<b>Total From All Sources</b>	<b>\$40,472,866.97</b>	<b>\$158,917.40</b>	<b>\$48,190.45</b>			

LEA : 116605003     Mifflinburg Area SD

Printed 10/29/2024 3:10:08 PM

	<u>Capital Reserve</u> <u>(1431) (32)</u>	<u>Other Capital</u> <u>Projects Fund (39)</u>	<u>Debt Service (40)</u>	<u>Permanent (90)</u>	<u>Total</u>
<b>7000 Revenue from State Sources</b>					
7820 State Share of Retirement Contributions					2,676,411.85
<b>7000 Total Revenue from State Sources</b>					<b>\$16,939,575.33</b>
<b>8000 Revenue from Federal Sources</b>					
8514 Title I - Improving the Academic Achievement of the Disadvantaged					508,458.00
8515 Title II - Preparing, Training, and Recruiting High Quality Teachers and Principals					74,251.00
8516 Title III - Language Instruction for English Learners and Immigrant Students					4,654.90
8517 Title IV - 21st Century Schools					40,134.00
8690 Other Restricted Federal Grants-in-Aid Through the Commonwealth of PA					3,639.04
8743 ESSER II - Elementary and Secondary School Emergency Relief Fund					259,761.65
8744 ARP ESSER - Elementary and Secondary School Emergency Relief Fund					35,488.58
8751 ARP ESSER Learning Loss					125,182.01
8752 ARP ESSER Summer Programs					4,998.07
8754 ARP ESSER Homeless Children and Youth Funds					12,440.00
8810 School-Based Access Medicaid Reimbursement Program (SBAP) Reimbursements (Access)					20,265.46
<b>8000 Total Revenue from Federal Sources</b>					<b>\$1,089,272.71</b>
<b>9000 Other Financing Sources</b>					
9310 General Fund Transfers	1,450,000.00				1,450,000.00
9320 Special Revenue Fund Transfers					11,920.64
9990 Insurance Recoveries					5,094.70
<b>9000 Total Other Financing Sources</b>	<b>\$1,450,000.00</b>				<b>\$1,467,015.34</b>
<b>Total From All Sources</b>	<b>\$1,542,797.27</b>				<b>\$42,222,772.09</b>

LEA : 116605003     Mifflinburg Area SD

Printed 10/29/2024 3:10:10 PM

	<u>General Fund (10)</u>	<u>Student Sponsored Activity Fund (21)</u>	<u>Public Purpose Trust (27)</u>	<u>Other Compt Approved (28)</u>	<u>Athletic / Activity (29)</u>	<u>Capital Reserve (690. 1850) (31)</u>
Revenue from Local Sources	22,427,003.59	158,917.40	48,190.45			
Revenue from State Sources	16,939,575.33					
Revenue from Federal Sources	1,089,272.71					
Other Financing Sources	17,015.34					
Total From All Sources	\$40,472,866.97	\$158,917.40	\$48,190.45			

LEA : 116605003     Mifflinburg Area SD

Printed 10/29/2024 3:10:10 PM

	<u>Capital Reserve (1431)</u> <u>(32)</u>	<u>Other Capital Projects</u> <u>Fund (39)</u>	<u>Debt Service (40)</u>	<u>Permanent (90)</u>	<u>Total</u>
Revenue from Local Sources	92,797.27				22,726,908.71
Revenue from State Sources					16,939,575.33
Revenue from Federal Sources					1,089,272.71
Other Financing Sources	1,450,000.00				1,467,015.34
Total From All Sources	\$1,542,797.27				\$42,222,772.09

LEA : 116605003     Mifflinburg Area SD

Printed 10/29/2024 3:10:16 PM

General Fund (10)

1000 Instruction	Total
100 <u>Personnel Services – Salaries</u>	
100 Personnel Services – Salaries	10,183,225.25
<b>Total Personnel Services – Salaries</b>	<b>\$10,183,225.25</b>
200 <u>Personnel Services – Employee Benefits</u>	
210 Group Insurance – Contracted Provider	2,569,495.54
220 Social Security Contributions	769,132.74
230 PSERS Retirement Contributions	3,433,838.77
250 Unemployment Compensation	7,535.23
260 Workers' Compensation	71,924.20
280 Other Post-Employment Benefits (OPEB)	154,000.00
<b>Total Personnel Services – Employee Benefits</b>	<b>\$7,005,926.48</b>
300 <u>Purchased Professional and Technical Services</u>	
322 Professional Educational Services – Ius	580,810.32
330 Other Professional Services	258,600.90
390 Other Purchased Professional and Technical Services	25,038.80
<b>Total Purchased Professional and Technical Services</b>	<b>\$864,450.02</b>
400 <u>Purchased Property Services</u>	
430 Repairs and Maintenance Services	5,935.48
440 Rentals	642.00
<b>Total Purchased Property Services</b>	<b>\$6,577.48</b>
500 <u>Other Purchased Services</u>	
510 Student Transportation Services	48,319.38
530 Communications	500.00
550 Printing and Binding	101.25
561 Tuition To Other School Districts Within the State	7,500.00
562 Tuition To Pennsylvania Charter Schools	885,656.96
564 Tuition To Career and Technology Centers	1,357,680.54
567 Tuition To Approved Private Schools (APS) and PA Chartered Schools for the Deaf and Blind	430,650.00
568 Tuition To Private Residential Rehabilitative Institutions (PRRI) [In-State] and Detention Centers	112,376.41
580 Travel	1,530.44
<b>Total Other Purchased Services</b>	<b>\$2,844,314.98</b>
600 <u>Supplies</u>	
610 General Supplies	605,873.57
630 Food	2,401.00
640 Books and Periodicals	1,530.94
650 Supplies & Fees – Technology Related	352,108.37
<b>Total Supplies</b>	<b>\$961,913.88</b>
800 <u>Other Objects</u>	
810 Dues and Fees	9,685.54
890 Miscellaneous Expenditures	(179.00)
<b>Total Other Objects</b>	<b>\$9,506.54</b>
<b>Total 1000 Instruction</b>	<b>\$21,875,914.63</b>

LEA : 116605003     Mifflinburg Area SD

Printed 10/29/2024 3:10:16 PM

General Fund (10)

1100 Regular Programs – Elementary / Secondary	Elementary	Secondary	Federal	Total
<b>100 <u>Personnel Services – Salaries</u></b>				
100 Personnel Services – Salaries	4,145,970.68	3,485,652.26	298,557.67	7,930,180.61
<b>Total Personnel Services – Salaries</b>	<b>\$4,145,970.68</b>	<b>\$3,485,652.26</b>	<b>\$298,557.67</b>	<b>\$7,930,180.61</b>
<b>200 <u>Personnel Services – Employee Benefits</u></b>				
210 Group Insurance – Contracted Provider	1,164,495.85	869,748.92	152,775.57	2,187,020.34
220 Social Security Contributions	314,254.35	262,360.94	21,857.14	598,472.43
230 PSERS Retirement Contributions	1,391,548.21	1,171,827.29	99,520.24	2,662,895.74
250 Unemployment Compensation	1,558.19	1,590.40	429.88	3,578.47
260 Workers' Compensation	34,102.56	26,619.63	1,287.97	62,010.16
280 Other Post-Employment Benefits (OPEB)	38,500.00	115,500.00		154,000.00
<b>Total Personnel Services – Employee Benefits</b>	<b>\$2,944,459.16</b>	<b>\$2,447,647.18</b>	<b>\$275,870.80</b>	<b>\$5,667,977.14</b>
<b>300 <u>Purchased Professional and Technical Services</u></b>				
322 Professional Educational Services – Ius	12,907.25	40,481.75		53,389.00
390 Other Purchased Professional and Technical Services	13,200.05			13,200.05
<b>Total Purchased Professional and Technical Services</b>	<b>\$26,107.30</b>	<b>\$40,481.75</b>		<b>\$66,589.05</b>
<b>400 <u>Purchased Property Services</u></b>				
430 Repairs and Maintenance Services	1,115.44	3,008.56		4,124.00
<b>Total Purchased Property Services</b>	<b>\$1,115.44</b>	<b>\$3,008.56</b>		<b>\$4,124.00</b>
<b>500 <u>Other Purchased Services</u></b>				
510 Student Transportation Services	5,124.28	7,745.66	452.28	13,322.22
550 Printing and Binding	101.25			101.25
562 Tuition To Pennsylvania Charter Schools	212,706.45	380,187.67		592,894.12
568 Tuition To Private Residential Rehabilitative Institutions (PRRI) [In-State] and Detention Centers	16,842.87	41,345.06		58,187.93
580 Travel	107.45	251.13		358.58
<b>Total Other Purchased Services</b>	<b>\$234,882.30</b>	<b>\$429,529.52</b>	<b>\$452.28</b>	<b>\$664,864.10</b>
<b>600 <u>Supplies</u></b>				
610 General Supplies	374,685.93	126,986.64	42,569.50	544,242.07
630 Food	2,401.00			2,401.00
640 Books and Periodicals		1,530.94		1,530.94
650 Supplies & Fees – Technology Related	89,537.48	21,319.91	225,851.99	336,709.38
<b>Total Supplies</b>	<b>\$466,624.41</b>	<b>\$149,837.49</b>	<b>\$268,421.49</b>	<b>\$884,883.39</b>
<b>800 <u>Other Objects</u></b>				
810 Dues and Fees	79.44	3,863.25		3,942.69
890 Miscellaneous Expenditures	(59.07)	(119.93)		(179.00)
<b>Total Other Objects</b>	<b>\$20.37</b>	<b>\$3,743.32</b>		<b>\$3,763.69</b>
<b>Total 1100 Regular Programs – Elementary / Secondary</b>	<b>\$7,819,179.66</b>	<b>\$6,559,900.08</b>	<b>\$843,302.24</b>	<b>\$15,222,381.98</b>

LEA : 116605003     Mifflinburg Area SD

Printed 10/29/2024 3:10:16 PM

General Fund (10)

1110 Regular Programs

	Elementary	Secondary	Federal	Total
<b>100 <u>Personnel Services – Salaries</u></b>				
100 Personnel Services – Salaries	4,145,970.68	3,485,652.26	42,212.11	7,673,835.05
<b>Total Personnel Services – Salaries</b>	<b>\$4,145,970.68</b>	<b>\$3,485,652.26</b>	<b>\$42,212.11</b>	<b>\$7,673,835.05</b>
<b>200 <u>Personnel Services – Employee Benefits</u></b>				
210 Group Insurance – Contracted Provider	1,164,495.85	869,748.92	11,172.87	2,045,417.64
220 Social Security Contributions	314,254.35	262,360.94	3,721.89	580,337.18
230 PSERS Retirement Contributions	1,391,548.21	1,171,827.29	16,877.09	2,580,252.59
250 Unemployment Compensation	1,558.19	1,590.40	48.65	3,197.24
260 Workers' Compensation	34,102.56	26,619.63	218.39	60,940.58
280 Other Post-Employment Benefits (OPEB)	38,500.00	115,500.00		154,000.00
<b>Total Personnel Services – Employee Benefits</b>	<b>\$2,944,459.16</b>	<b>\$2,447,647.18</b>	<b>\$32,038.89</b>	<b>\$5,424,145.23</b>
<b>300 <u>Purchased Professional and Technical Services</u></b>				
322 Professional Educational Services – Ius	12,907.25	40,481.75		53,389.00
390 Other Purchased Professional and Technical Services	13,200.05			13,200.05
<b>Total Purchased Professional and Technical Services</b>	<b>\$26,107.30</b>	<b>\$40,481.75</b>		<b>\$66,589.05</b>
<b>400 <u>Purchased Property Services</u></b>				
430 Repairs and Maintenance Services	1,115.44	3,008.56		4,124.00
<b>Total Purchased Property Services</b>	<b>\$1,115.44</b>	<b>\$3,008.56</b>		<b>\$4,124.00</b>
<b>500 <u>Other Purchased Services</u></b>				
510 Student Transportation Services	5,124.28	7,745.66	452.28	13,322.22
550 Printing and Binding	101.25			101.25
562 Tuition To Pennsylvania Charter Schools	212,706.45	380,187.67		592,894.12
568 Tuition To Private Residential Rehabilitative Institutions (PRRI) [In-State] and Detention Centers	16,842.87	41,345.06		58,187.93
580 Travel	107.45	251.13		358.58
<b>Total Other Purchased Services</b>	<b>\$234,882.30</b>	<b>\$429,529.52</b>	<b>\$452.28</b>	<b>\$664,864.10</b>
<b>600 <u>Supplies</u></b>				
610 General Supplies	374,685.93	126,986.64	40,431.50	542,104.07
630 Food	2,401.00			2,401.00
640 Books and Periodicals		1,530.94		1,530.94
650 Supplies & Fees – Technology Related	89,537.48	21,319.91	225,851.99	336,709.38
<b>Total Supplies</b>	<b>\$466,624.41</b>	<b>\$149,837.49</b>	<b>\$266,283.49</b>	<b>\$882,745.39</b>
<b>800 <u>Other Objects</u></b>				
810 Dues and Fees	79.44	3,863.25		3,942.69
890 Miscellaneous Expenditures	(59.07)	(119.93)		(179.00)
<b>Total Other Objects</b>	<b>\$20.37</b>	<b>\$3,743.32</b>		<b>\$3,763.69</b>
<b>Total 1110 Regular Programs</b>	<b>\$7,819,179.66</b>	<b>\$6,559,900.08</b>	<b>\$340,986.77</b>	<b>\$14,720,066.51</b>

LEA : 116605003     Mifflinburg Area SD

Printed 10/29/2024 3:10:16 PM

General Fund (10)

1190 Federally-Funded Regular Programs	<u>Elementary</u>	<u>Secondary</u>	<u>Federal</u>	<u>Total</u>
100 <u>Personnel Services – Salaries</u>				
100 Personnel Services – Salaries			256,345.56	256,345.56
Total Personnel Services – Salaries			\$256,345.56	\$256,345.56
200 <u>Personnel Services – Employee Benefits</u>				
210 Group Insurance – Contracted Provider			141,602.70	141,602.70
220 Social Security Contributions			18,135.25	18,135.25
230 PSERS Retirement Contributions			82,643.15	82,643.15
250 Unemployment Compensation			381.23	381.23
260 Workers' Compensation			1,069.58	1,069.58
Total Personnel Services – Employee Benefits			\$243,831.91	\$243,831.91
600 <u>Supplies</u>				
610 General Supplies			2,138.00	2,138.00
Total Supplies			\$2,138.00	\$2,138.00
Total 1190 Federally-Funded Regular Programs			\$502,315.47	\$502,315.47



LEA : 116605003     Mifflinburg Area SD

Printed 10/29/2024 3:10:16 PM

General Fund (10)

1200 Special Programs – Elementary / Secondary	Elementary	Secondary	Federal	Total
<b>100 Personnel Services – Salaries</b>				
100 Personnel Services – Salaries	1,131,170.23	634,327.09	299,687.15	2,065,184.47
<b>Total Personnel Services – Salaries</b>	<b>\$1,131,170.23</b>	<b>\$634,327.09</b>	<b>\$299,687.15</b>	<b>\$2,065,184.47</b>
<b>200 Personnel Services – Employee Benefits</b>				
210 Group Insurance – Contracted Provider	182,221.47	168,335.48	12,238.75	362,795.70
220 Social Security Contributions	88,606.99	49,433.09	18,356.29	156,396.37
230 PSERS Retirement Contributions	421,109.11	233,944.57	48,797.20	703,850.88
250 Unemployment Compensation	1,825.97	871.09	1,047.79	3,744.85
260 Workers' Compensation	5,137.17	2,880.39	1,069.62	9,087.18
<b>Total Personnel Services – Employee Benefits</b>	<b>\$698,900.71</b>	<b>\$455,464.62</b>	<b>\$81,509.65</b>	<b>\$1,235,874.98</b>
<b>300 Purchased Professional and Technical Services</b>				
322 Professional Educational Services – lus	128,706.54	392,198.36		520,904.90
330 Other Professional Services	109,186.57	149,414.33		258,600.90
390 Other Purchased Professional and Technical Services	2,966.89	8,871.86		11,838.75
<b>Total Purchased Professional and Technical Services</b>	<b>\$240,860.00</b>	<b>\$550,484.55</b>		<b>\$791,344.55</b>
<b>400 Purchased Property Services</b>				
430 Repairs and Maintenance Services	942.32			942.32
440 Rentals	475.50	166.50		642.00
<b>Total Purchased Property Services</b>	<b>\$1,417.82</b>	<b>\$166.50</b>		<b>\$1,584.32</b>
<b>500 Other Purchased Services</b>				
510 Student Transportation Services	6,520.06	19,560.18	8,916.92	34,997.16
561 Tuition To Other School Districts Within the State		7,500.00		7,500.00
562 Tuition To Pennsylvania Charter Schools	129,501.95	163,260.89		292,762.84
567 Tuition To Approved Private Schools (APS) and PA Chartered Schools for the Deaf and Blind	356,348.65	74,301.35		430,650.00
568 Tuition To Private Residential Rehabilitative Institutions (PRRI) [In-State] and Detention Centers	5,009.40	44,670.60		49,680.00
580 Travel	407.82	616.74		1,024.56
<b>Total Other Purchased Services</b>	<b>\$497,787.88</b>	<b>\$309,909.76</b>	<b>\$8,916.92</b>	<b>\$816,614.56</b>
<b>600 Supplies</b>				
610 General Supplies	10,300.19	15,977.94		26,278.13
650 Supplies & Fees – Technology Related	7,891.22	5,477.77		13,368.99
<b>Total Supplies</b>	<b>\$18,191.41</b>	<b>\$21,455.71</b>		<b>\$39,647.12</b>
<b>800 Other Objects</b>				
810 Dues and Fees	3,209.66	2,533.19		5,742.85
<b>Total Other Objects</b>	<b>\$3,209.66</b>	<b>\$2,533.19</b>		<b>\$5,742.85</b>
<b>Total 1200 Special Programs – Elementary / Secondary</b>	<b>\$2,591,537.71</b>	<b>\$1,974,341.42</b>	<b>\$390,113.72</b>	<b>\$4,955,992.85</b>

LEA : 116605003     Mifflinburg Area SD

Printed 10/29/2024 3:10:16 PM

General Fund (10)

1210 Life Skills Support

	<u>Elementary</u>	<u>Secondary</u>	<u>Federal</u>	<u>Total</u>
<b>100 <u>Personnel Services – Salaries</u></b>				
100 Personnel Services – Salaries	196,530.21	110,305.38	57,258.11	364,093.70
<b>Total Personnel Services – Salaries</b>	<b>\$196,530.21</b>	<b>\$110,305.38</b>	<b>\$57,258.11</b>	<b>\$364,093.70</b>
<b>200 <u>Personnel Services – Employee Benefits</u></b>				
210 Group Insurance – Contracted Provider	34,707.75	30,439.75		65,147.50
220 Social Security Contributions	15,646.77	8,630.63	3,379.71	27,657.11
230 PSERS Retirement Contributions	70,694.72	41,815.33	9,295.45	121,805.50
250 Unemployment Compensation	369.54	187.19	236.13	792.86
260 Workers' Compensation	904.30	502.00	195.55	1,601.85
<b>Total Personnel Services – Employee Benefits</b>	<b>\$122,323.08</b>	<b>\$81,574.90</b>	<b>\$13,106.84</b>	<b>\$217,004.82</b>
<b>300 <u>Purchased Professional and Technical Services</u></b>				
322 Professional Educational Services – lus	51,287.87	153,863.62		205,151.49
390 Other Purchased Professional and Technical Services	29.70	60.30		90.00
<b>Total Purchased Professional and Technical Services</b>	<b>\$51,317.57</b>	<b>\$153,923.92</b>		<b>\$205,241.49</b>
<b>400 <u>Purchased Property Services</u></b>				
440 Rentals	420.00			420.00
<b>Total Purchased Property Services</b>	<b>\$420.00</b>			<b>\$420.00</b>
<b>500 <u>Other Purchased Services</u></b>				
510 Student Transportation Services	1,334.20	4,002.62		5,336.82
580 Travel	19.28	39.15		58.43
<b>Total Other Purchased Services</b>	<b>\$1,353.48</b>	<b>\$4,041.77</b>		<b>\$5,395.25</b>
<b>600 <u>Supplies</u></b>				
610 General Supplies	2,292.16	1,975.88		4,268.04
650 Supplies & Fees – Technology Related	5,750.26	4,394.49		10,144.75
<b>Total Supplies</b>	<b>\$8,042.42</b>	<b>\$6,370.37</b>		<b>\$14,412.79</b>
<b>Total 1210 Life Skills Support</b>	<b>\$379,986.76</b>	<b>\$356,216.34</b>	<b>\$70,364.95</b>	<b>\$806,568.05</b>

LEA : 116605003     Mifflinburg Area SD

Printed 10/29/2024 3:10:16 PM

General Fund (10)

1220 Sensory Support	Elementary	Secondary	Federal	Total
<b>100 Personnel Services – Salaries</b>				
100 Personnel Services – Salaries	142,497.68	47,570.00		190,067.68
<b>Total Personnel Services – Salaries</b>	<b>\$142,497.68</b>	<b>\$47,570.00</b>		<b>\$190,067.68</b>
<b>200 Personnel Services – Employee Benefits</b>				
210 Group Insurance – Contracted Provider	43,917.56	16,435.44		60,353.00
220 Social Security Contributions	10,710.21	3,639.20		14,349.41
230 PSERS Retirement Contributions	49,462.21	16,465.06		65,927.27
250 Unemployment Compensation	144.47	41.54		186.01
260 Workers' Compensation	626.93	209.39		836.32
<b>Total Personnel Services – Employee Benefits</b>	<b>\$104,861.38</b>	<b>\$36,790.63</b>		<b>\$141,652.01</b>
<b>300 Purchased Professional and Technical Services</b>				
390 Other Purchased Professional and Technical Services	2,937.19	8,811.56		11,748.75
<b>Total Purchased Professional and Technical Services</b>	<b>\$2,937.19</b>	<b>\$8,811.56</b>		<b>\$11,748.75</b>
<b>600 Supplies</b>				
610 General Supplies	2,245.02	24.09		2,269.11
650 Supplies & Fees – Technology Related	48.25	36.74		84.99
<b>Total Supplies</b>	<b>\$2,293.27</b>	<b>\$60.83</b>		<b>\$2,354.10</b>
<b>800 Other Objects</b>				
810 Dues and Fees	3,006.71	296.14		3,302.85
<b>Total Other Objects</b>	<b>\$3,006.71</b>	<b>\$296.14</b>		<b>\$3,302.85</b>
<b>Total 1220 Sensory Support</b>	<b>\$255,596.23</b>	<b>\$93,529.16</b>		<b>\$349,125.39</b>

LEA : 116605003     Mifflinburg Area SD

Printed 10/29/2024 3:10:16 PM

General Fund (10)

1230 Emotional Support

	<u>Elementary</u>	<u>Secondary</u>	<u>Federal</u>	<u>Total</u>
<b>100 <u>Personnel Services – Salaries</u></b>				
100 Personnel Services – Salaries	378,947.96	61,025.00	95,108.08	535,081.04
<b>Total Personnel Services – Salaries</b>	<b>\$378,947.96</b>	<b>\$61,025.00</b>	<b>\$95,108.08</b>	<b>\$535,081.04</b>
<b>200 <u>Personnel Services – Employee Benefits</u></b>				
210 Group Insurance – Contracted Provider	61,701.00			61,701.00
220 Social Security Contributions	29,464.94	4,668.30	6,506.23	40,639.47
230 PSERS Retirement Contributions	146,920.28	20,257.97	15,942.00	183,120.25
250 Unemployment Compensation	684.78	62.00	369.74	1,116.52
260 Workers' Compensation	1,707.19	268.71	378.86	2,354.76
<b>Total Personnel Services – Employee Benefits</b>	<b>\$240,478.19</b>	<b>\$25,256.98</b>	<b>\$23,196.83</b>	<b>\$288,932.00</b>
<b>300 <u>Purchased Professional and Technical Services</u></b>				
322 Professional Educational Services – lus	70,028.55	216,164.40		286,192.95
<b>Total Purchased Professional and Technical Services</b>	<b>\$70,028.55</b>	<b>\$216,164.40</b>		<b>\$286,192.95</b>
<b>500 <u>Other Purchased Services</u></b>				
580 Travel	274.34	89.65		363.99
<b>Total Other Purchased Services</b>	<b>\$274.34</b>	<b>\$89.65</b>		<b>\$363.99</b>
<b>600 <u>Supplies</u></b>				
610 General Supplies	2,627.29			2,627.29
<b>Total Supplies</b>	<b>\$2,627.29</b>			<b>\$2,627.29</b>
<b>Total 1230 Emotional Support</b>	<b>\$692,356.33</b>	<b>\$302,536.03</b>	<b>\$118,304.91</b>	<b>\$1,113,197.27</b>

LEA : 116605003     Mifflinburg Area SD

Printed 10/29/2024 3:10:16 PM

General Fund (10)

1240 Academic Support

	Elementary	Secondary	Federal	Total
<b>100 <u>Personnel Services – Salaries</u></b>				
100 Personnel Services – Salaries	386,000.22	294,392.55	90,556.94	770,949.71
<b>Total Personnel Services – Salaries</b>	<b>\$386,000.22</b>	<b>\$294,392.55</b>	<b>\$90,556.94</b>	<b>\$770,949.71</b>
<b>200 <u>Personnel Services – Employee Benefits</u></b>				
210 Group Insurance – Contracted Provider	35,003.78	91,045.92		126,049.70
220 Social Security Contributions	30,591.47	22,380.41	5,309.02	58,280.90
230 PSERS Retirement Contributions	143,188.56	104,429.15	15,208.79	262,826.50
250 Unemployment Compensation	588.02	367.47	283.30	1,238.79
260 Workers' Compensation	1,770.32	1,313.31	308.66	3,392.29
<b>Total Personnel Services – Employee Benefits</b>	<b>\$211,142.15</b>	<b>\$219,536.26</b>	<b>\$21,109.77</b>	<b>\$451,788.18</b>
<b>300 <u>Purchased Professional and Technical Services</u></b>				
330 Other Professional Services	67,339.47	23,873.03		91,212.50
<b>Total Purchased Professional and Technical Services</b>	<b>\$67,339.47</b>	<b>\$23,873.03</b>		<b>\$91,212.50</b>
<b>400 <u>Purchased Property Services</u></b>				
430 Repairs and Maintenance Services	942.32			942.32
<b>Total Purchased Property Services</b>	<b>\$942.32</b>			<b>\$942.32</b>
<b>500 <u>Other Purchased Services</u></b>				
510 Student Transportation Services			8,916.92	8,916.92
580 Travel	114.20	487.94		602.14
<b>Total Other Purchased Services</b>	<b>\$114.20</b>	<b>\$487.94</b>	<b>\$8,916.92</b>	<b>\$9,519.06</b>
<b>600 <u>Supplies</u></b>				
610 General Supplies	1,408.37	1,577.73		2,986.10
650 Supplies & Fees – Technology Related	1,779.90	108.10		1,888.00
<b>Total Supplies</b>	<b>\$3,188.27</b>	<b>\$1,685.83</b>		<b>\$4,874.10</b>
<b>800 <u>Other Objects</u></b>				
810 Dues and Fees	202.95	2,237.05		2,440.00
<b>Total Other Objects</b>	<b>\$202.95</b>	<b>\$2,237.05</b>		<b>\$2,440.00</b>
<b>Total 1240 Academic Support</b>	<b>\$668,929.58</b>	<b>\$542,212.66</b>	<b>\$120,583.63</b>	<b>\$1,331,725.87</b>

LEA : 116605003     Mifflinburg Area SD

Printed 10/29/2024 3:10:16 PM

General Fund (10)

1241 Learning Support – Public	Elementary	Secondary	Federal	Total
100 <u>Personnel Services – Salaries</u>				
100 Personnel Services – Salaries	334,807.24	212,502.95	90,556.94	637,867.13
Total Personnel Services – Salaries	\$334,807.24	\$212,502.95	\$90,556.94	\$637,867.13
200 <u>Personnel Services – Employee Benefits</u>				
210 Group Insurance – Contracted Provider	35,003.78	68,301.22		103,305.00
220 Social Security Contributions	26,674.99	16,436.41	5,309.02	48,420.42
230 PSERS Retirement Contributions	125,218.71	76,771.76	15,208.79	217,199.26
250 Unemployment Compensation	540.39	297.60	283.30	1,121.29
260 Workers' Compensation	1,545.10	952.99	308.66	2,806.75
Total Personnel Services – Employee Benefits	\$188,982.97	\$162,759.98	\$21,109.77	\$372,852.72
300 <u>Purchased Professional and Technical Services</u>				
330 Other Professional Services	67,339.47	23,873.03		91,212.50
Total Purchased Professional and Technical Services	\$67,339.47	\$23,873.03		\$91,212.50
400 <u>Purchased Property Services</u>				
430 Repairs and Maintenance Services	942.32			942.32
Total Purchased Property Services	\$942.32			\$942.32
500 <u>Other Purchased Services</u>				
510 Student Transportation Services			8,916.92	8,916.92
Total Other Purchased Services			\$8,916.92	\$8,916.92
600 <u>Supplies</u>				
610 General Supplies	306.53	555.41		861.94
650 Supplies & Fees – Technology Related	1,779.90	108.10		1,888.00
Total Supplies	\$2,086.43	\$663.51		\$2,749.94
Total 1241 Learning Support – Public	\$594,158.43	\$399,799.47	\$120,583.63	\$1,114,541.53

LEA : 116605003     Mifflinburg Area SD

Printed 10/29/2024 3:10:16 PM

General Fund (10)

1243 Gifted Support	Elementary	Secondary	Federal	Total
100 <u>Personnel Services – Salaries</u>				
100 Personnel Services – Salaries	51,192.98	81,889.60		133,082.58
Total Personnel Services – Salaries	\$51,192.98	\$81,889.60		\$133,082.58
200 <u>Personnel Services – Employee Benefits</u>				
210 Group Insurance – Contracted Provider		22,744.70		22,744.70
220 Social Security Contributions	3,916.48	5,944.00		9,860.48
230 PSERS Retirement Contributions	17,969.85	27,657.39		45,627.24
250 Unemployment Compensation	47.63	69.87		117.50
260 Workers' Compensation	225.22	360.32		585.54
Total Personnel Services – Employee Benefits	\$22,159.18	\$56,776.28		\$78,935.46
500 <u>Other Purchased Services</u>				
580 Travel	114.20	487.94		602.14
Total Other Purchased Services	\$114.20	\$487.94		\$602.14
600 <u>Supplies</u>				
610 General Supplies	1,101.84	1,022.32		2,124.16
Total Supplies	\$1,101.84	\$1,022.32		\$2,124.16
800 <u>Other Objects</u>				
810 Dues and Fees	202.95	2,237.05		2,440.00
Total Other Objects	\$202.95	\$2,237.05		\$2,440.00
Total 1243 Gifted Support	\$74,771.15	\$142,413.19		\$217,184.34

LEA : 116605003     Mifflinburg Area SD

Printed 10/29/2024 3:10:16 PM

General Fund (10)

1260 Physical Support

	<u>Elementary</u>	<u>Secondary</u>	<u>Federal</u>	<u>Total</u>
<b>300 <u>Purchased Professional and Technical Services</u></b>				
322 Professional Educational Services – Ius	4,643.30	13,929.89		18,573.19
330 Other Professional Services	41,847.10	125,541.30		167,388.40
<b>Total Purchased Professional and Technical Services</b>	<b>\$46,490.40</b>	<b>\$139,471.19</b>		<b>\$185,961.59</b>
<b>600 <u>Supplies</u></b>				
610 General Supplies	456.19	1,368.58		1,824.77
<b>Total Supplies</b>	<b>\$456.19</b>	<b>\$1,368.58</b>		<b>\$1,824.77</b>
<b>Total 1260 Physical Support</b>	<b>\$46,946.59</b>	<b>\$140,839.77</b>		<b>\$187,786.36</b>



LEA : 116605003     Mifflinburg Area SD

Printed 10/29/2024 3:10:16 PM

General Fund (10)

1270 Multi-Handicapped Support	<u>Elementary</u>	<u>Secondary</u>	<u>Federal</u>	<u>Total</u>
100 <u>Personnel Services – Salaries</u>				
100 Personnel Services – Salaries	23,546.15	110,090.14	45,515.72	179,152.01
Total Personnel Services – Salaries	\$23,546.15	\$110,090.14	\$45,515.72	\$179,152.01
200 <u>Personnel Services – Employee Benefits</u>				
210 Group Insurance – Contracted Provider	6,891.38	30,414.37	6,097.75	43,403.50
220 Social Security Contributions	1,917.81	9,287.19	2,308.86	13,513.86
230 PSERS Retirement Contributions	9,084.55	45,700.71	6,165.56	60,950.82
250 Unemployment Compensation	29.47	183.79	96.64	309.90
260 Workers' Compensation	112.38	538.81	137.06	788.25
Total Personnel Services – Employee Benefits	\$18,035.59	\$86,124.87	\$14,805.87	\$118,966.33
600 <u>Supplies</u>				
610 General Supplies	835.85	1,647.57		2,483.42
Total Supplies	\$835.85	\$1,647.57		\$2,483.42
Total 1270 Multi-Handicapped Support	\$42,417.59	\$197,862.58	\$60,321.59	\$300,601.76

LEA : 116605003      Mifflinburg Area SD

Printed 10/29/2024 3:10:16 PM

General Fund (10)

1290 Special Programs - Other Support	Elementary	Secondary	Federal	Total
100 <u>Personnel Services – Salaries</u>				
100 Personnel Services – Salaries	3,648.01	10,944.02	11,248.30	25,840.33
Total Personnel Services – Salaries	\$3,648.01	\$10,944.02	\$11,248.30	\$25,840.33
200 <u>Personnel Services – Employee Benefits</u>				
210 Group Insurance – Contracted Provider			6,141.00	6,141.00
220 Social Security Contributions	275.79	827.36	852.47	1,955.62
230 PSERS Retirement Contributions	1,758.79	5,276.35	2,185.40	9,220.54
250 Unemployment Compensation	9.69	29.10	61.98	100.77
260 Workers' Compensation	16.05	48.17	49.49	113.71
Total Personnel Services – Employee Benefits	\$2,060.32	\$6,180.98	\$9,290.34	\$17,531.64
300 <u>Purchased Professional and Technical Services</u>				
322 Professional Educational Services – lus	2,746.82	8,240.45		10,987.27
Total Purchased Professional and Technical Services	\$2,746.82	\$8,240.45		\$10,987.27
400 <u>Purchased Property Services</u>				
440 Rentals	55.50	166.50		222.00
Total Purchased Property Services	\$55.50	\$166.50		\$222.00
500 <u>Other Purchased Services</u>				
510 Student Transportation Services	5,185.86	15,557.56		20,743.42
561 Tuition To Other School Districts Within the State		7,500.00		7,500.00
562 Tuition To Pennsylvania Charter Schools	129,501.95	163,260.89		292,762.84
567 Tuition To Approved Private Schools (APS) and PA Chartered Schools for the Deaf and Blind	356,348.65	74,301.35		430,650.00
568 Tuition To Private Residential Rehabilitative Institutions (PRRI) [In-State] and Detention Centers	5,009.40	44,670.60		49,680.00
Total Other Purchased Services	\$496,045.86	\$305,290.40		\$801,336.26
600 <u>Supplies</u>				
610 General Supplies	435.31	9,384.09		9,819.40
650 Supplies & Fees – Technology Related	312.81	938.44		1,251.25
Total Supplies	\$748.12	\$10,322.53		\$11,070.65
Total 1290 Special Programs - Other Support	\$505,304.63	\$341,144.88	\$20,538.64	\$866,988.15

LEA : 116605003     Mifflinburg Area SD

Printed 10/29/2024 3:10:16 PM

General Fund (10)

1300 Vocational Education

	<u>Elementary</u>	<u>Secondary</u>	<u>Federal</u>	<u>Total</u>
<b>100 <u>Personnel Services – Salaries</u></b>				
100 Personnel Services – Salaries		132,990.90		132,990.90
<b>Total Personnel Services – Salaries</b>		<b>\$132,990.90</b>		<b>\$132,990.90</b>
<b>200 <u>Personnel Services – Employee Benefits</u></b>				
210 Group Insurance – Contracted Provider		19,679.50		19,679.50
220 Social Security Contributions		10,122.82		10,122.82
230 PSERS Retirement Contributions		45,651.57		45,651.57
250 Unemployment Compensation		161.08		161.08
260 Workers' Compensation		585.26		585.26
<b>Total Personnel Services – Employee Benefits</b>		<b>\$76,200.23</b>		<b>\$76,200.23</b>
<b>400 <u>Purchased Property Services</u></b>				
430 Repairs and Maintenance Services		869.16		869.16
<b>Total Purchased Property Services</b>		<b>\$869.16</b>		<b>\$869.16</b>
<b>500 <u>Other Purchased Services</u></b>				
564 Tuition To Career and Technology Centers		1,357,680.54		1,357,680.54
580 Travel		147.30		147.30
<b>Total Other Purchased Services</b>		<b>\$1,357,827.84</b>		<b>\$1,357,827.84</b>
<b>600 <u>Supplies</u></b>				
610 General Supplies		30,401.07		30,401.07
650 Supplies & Fees – Technology Related		2,030.00		2,030.00
<b>Total Supplies</b>		<b>\$32,431.07</b>		<b>\$32,431.07</b>
<b>Total 1300 Vocational Education</b>		<b>\$1,600,319.20</b>		<b>\$1,600,319.20</b>

LEA : 116605003     Mifflinburg Area SD

Printed 10/29/2024 3:10:16 PM

General Fund (10)

1400 Other Instructional Programs – Elementary / Secondary	<u>Elementary</u>	<u>Secondary</u>	<u>Federal</u>	<u>Total</u>
100 <u>Personnel Services – Salaries</u>				
100 Personnel Services – Salaries	27,181.47	22,133.96	4,792.74	54,108.17
Total Personnel Services – Salaries	\$27,181.47	\$22,133.96	\$4,792.74	\$54,108.17
200 <u>Personnel Services – Employee Benefits</u>				
220 Social Security Contributions	2,059.63	1,679.98	343.30	4,082.91
230 PSERS Retirement Contributions	11,290.55	8,589.26	1,560.77	21,440.58
250 Unemployment Compensation	25.23	20.90		46.13
260 Workers' Compensation	119.86	98.21	20.20	238.27
Total Personnel Services – Employee Benefits	\$13,495.27	\$10,388.35	\$1,924.27	\$25,807.89
300 <u>Purchased Professional and Technical Services</u>				
322 Professional Educational Services – Ius	1,629.10	4,887.32		6,516.42
Total Purchased Professional and Technical Services	\$1,629.10	\$4,887.32		\$6,516.42
500 <u>Other Purchased Services</u>				
530 Communications	125.00	375.00		500.00
568 Tuition To Private Residential Rehabilitative Institutions (PRRI) [In-State] and Detention Centers	3,786.88	721.60		4,508.48
Total Other Purchased Services	\$3,911.88	\$1,096.60		\$5,008.48
600 <u>Supplies</u>				
610 General Supplies	2,726.70	305.50	1,920.10	4,952.30
Total Supplies	\$2,726.70	\$305.50	\$1,920.10	\$4,952.30
Total 1400 Other Instructional Programs – Elementary / Secondary	\$48,944.42	\$38,811.73	\$8,637.11	\$96,393.26

LEA : 116605003     Mifflinburg Area SD

Printed 10/29/2024 3:10:16 PM

General Fund (10)

1420 Summer School	<u>Elementary</u>	<u>Secondary</u>	<u>Federal</u>	<u>Total</u>
<b>100 <u>Personnel Services – Salaries</u></b>				
100 Personnel Services – Salaries	3,718.53	7,549.73	3,580.74	14,849.00
<b>Total Personnel Services – Salaries</b>	<b>\$3,718.53</b>	<b>\$7,549.73</b>	<b>\$3,580.74</b>	<b>\$14,849.00</b>
<b>200 <u>Personnel Services – Employee Benefits</u></b>				
220 Social Security Contributions	284.19	576.98	253.78	1,114.95
230 PSERS Retirement Contributions	1,430.46	2,904.26	1,148.69	5,483.41
250 Unemployment Compensation	0.12	0.23		0.35
260 Workers' Compensation	16.64	33.78	14.86	65.28
<b>Total Personnel Services – Employee Benefits</b>	<b>\$1,731.41</b>	<b>\$3,515.25</b>	<b>\$1,417.33</b>	<b>\$6,663.99</b>
<b>Total 1420 Summer School</b>	<b>\$5,449.94</b>	<b>\$11,064.98</b>	<b>\$4,998.07</b>	<b>\$21,512.99</b>

LEA : 116605003      Mifflinburg Area SD

Printed 10/29/2024 3:10:16 PM

General Fund (10)

1430 Homebound Instruction	<u>Elementary</u>	<u>Secondary</u>	<u>Federal</u>	<u>Total</u>
100 <u>Personnel Services – Salaries</u>				
100 Personnel Services – Salaries	468.27	950.73		1,419.00
Total Personnel Services – Salaries	\$468.27	\$950.73		\$1,419.00
200 <u>Personnel Services – Employee Benefits</u>				
220 Social Security Contributions	35.83	72.74		108.57
230 PSERS Retirement Contributions	159.22	323.25		482.47
250 Unemployment Compensation	1.34	2.72		4.06
260 Workers' Compensation	2.06	4.19		6.25
Total Personnel Services – Employee Benefits	\$198.45	\$402.90		\$601.35
Total 1430 Homebound Instruction	\$666.72	\$1,353.63		\$2,020.35

LEA : 116605003     Mifflinburg Area SD

Printed 10/29/2024 3:10:16 PM

General Fund (10)

1440 Alternative Regular Education Programs	<u>Elementary</u>	<u>Secondary</u>	<u>Federal</u>	<u>Total</u>
300 <u>Purchased Professional and Technical Services</u>				
322 Professional Educational Services – Ius	1,629.10	4,887.32		6,516.42
Total Purchased Professional and Technical Services	\$1,629.10	\$4,887.32		\$6,516.42
500 <u>Other Purchased Services</u>				
568 Tuition To Private Residential Rehabilitative Institutions (PRRI) [In-State] and Detention Centers	3,786.88	721.60		4,508.48
Total Other Purchased Services	\$3,786.88	\$721.60		\$4,508.48
Total 1440 Alternative Regular Education Programs	\$5,415.98	\$5,608.92		\$11,024.90

LEA : 116605003     Mifflinburg Area SD

Printed 10/29/2024 3:10:16 PM

General Fund (10)

1441 Adjudicated / Court-Placed Programs	<u>Elementary</u>	<u>Secondary</u>	<u>Federal</u>	<u>Total</u>
300 <u>Purchased Professional and Technical Services</u>				
322 Professional Educational Services – lus	1,629.10	4,887.32		6,516.42
Total Purchased Professional and Technical Services	\$1,629.10	\$4,887.32		\$6,516.42
Total 1441 Adjudicated / Court-Placed Programs	\$1,629.10	\$4,887.32		\$6,516.42



LEA : 116605003     Mifflinburg Area SD

Printed 10/29/2024 3:10:16 PM

General Fund (10)

1442 Alternative Education Programs	<u>Elementary</u>	<u>Secondary</u>	<u>Federal</u>	<u>Total</u>
500 <u>Other Purchased Services</u>				
568 Tuition To Private Residential Rehabilitative Institutions (PRRI) [In-State] and Detention Centers	3,786.88	721.60		4,508.48
Total Other Purchased Services	\$3,786.88	\$721.60		\$4,508.48
Total 1442 Alternative Education Programs	\$3,786.88	\$721.60		\$4,508.48

LEA : 116605003     Mifflinburg Area SD

Printed 10/29/2024 3:10:16 PM

General Fund (10)

1450 Instructional Programs Outside the Established School Day	<u>Elementary</u>	<u>Secondary</u>	<u>Federal</u>	<u>Total</u>
<b>100 <u>Personnel Services – Salaries</u></b>				
100 Personnel Services – Salaries	18,706.94	13,633.50		32,340.44
<b>Total Personnel Services – Salaries</b>	<b>\$18,706.94</b>	<b>\$13,633.50</b>		<b>\$32,340.44</b>
<b>200 <u>Personnel Services – Employee Benefits</u></b>				
220 Social Security Contributions	1,415.66	1,030.26		2,445.92
230 PSERS Retirement Contributions	7,373.54	5,361.75		12,735.29
250 Unemployment Compensation	22.26	17.95		40.21
260 Workers' Compensation	82.50	60.24		142.74
<b>Total Personnel Services – Employee Benefits</b>	<b>\$8,893.96</b>	<b>\$6,470.20</b>		<b>\$15,364.16</b>
<b>600 <u>Supplies</u></b>				
610 General Supplies	9.99	20.27		30.26
<b>Total Supplies</b>	<b>\$9.99</b>	<b>\$20.27</b>		<b>\$30.26</b>
<b>Total 1450 Instructional Programs Outside the Established School Day</b>	<b>\$27,610.89</b>	<b>\$20,123.97</b>		<b>\$47,734.86</b>

LEA : 116605003     Mifflinburg Area SD

Printed 10/29/2024 3:10:16 PM

General Fund (10)

1490 Additional Other Instructional Programs	<u>Elementary</u>	<u>Secondary</u>	<u>Federal</u>	<u>Total</u>
100 <u>Personnel Services – Salaries</u>				
100 Personnel Services – Salaries	4,287.73		1,212.00	5,499.73
Total Personnel Services – Salaries	\$4,287.73		\$1,212.00	\$5,499.73
200 <u>Personnel Services – Employee Benefits</u>				
220 Social Security Contributions	323.95		89.52	413.47
230 PSERS Retirement Contributions	2,327.33		412.08	2,739.41
250 Unemployment Compensation	1.51			1.51
260 Workers' Compensation	18.66		5.34	24.00
Total Personnel Services – Employee Benefits	\$2,671.45		\$506.94	\$3,178.39
500 <u>Other Purchased Services</u>				
530 Communications	125.00	375.00		500.00
Total Other Purchased Services	\$125.00	\$375.00		\$500.00
600 <u>Supplies</u>				
610 General Supplies	2,716.71	285.23	1,920.10	4,922.04
Total Supplies	\$2,716.71	\$285.23	\$1,920.10	\$4,922.04
Total 1490 Additional Other Instructional Programs	\$9,800.89	\$660.23	\$3,639.04	\$14,100.16

LEA : 116605003     Mifflinburg Area SD

Printed 10/29/2024 3:10:16 PM

General Fund (10)

1600 Adult Education Programs	<u>Elementary</u>	<u>Secondary</u>	<u>Federal</u>	<u>Total</u>
100 <u>Personnel Services – Salaries</u>				
100 Personnel Services – Salaries				761.10
Total Personnel Services – Salaries				\$761.10
200 <u>Personnel Services – Employee Benefits</u>				
220 Social Security Contributions				58.21
250 Unemployment Compensation				4.70
260 Workers' Compensation				3.33
Total Personnel Services – Employee Benefits				\$66.24
Total 1600 Adult Education Programs				\$827.34

LEA : 116605003      Mifflinburg Area SD

Printed 10/29/2024 3:10:22 PM

General Fund (10)

2000 Support Services

Total

100	<u>Personnel Services – Salaries</u>	
100	Personnel Services – Salaries	3,982,526.19
Total Personnel Services – Salaries		\$3,982,526.19
200	<u>Personnel Services – Employee Benefits</u>	
210	Group Insurance – Contracted Provider	1,305,475.47
220	Social Security Contributions	301,680.05
230	PSERS Retirement Contributions	1,285,604.96
240	Tuition Reimbursement	99,555.89
250	Unemployment Compensation	5,222.14
260	Workers' Compensation	17,485.75
280	Other Post-Employment Benefits (OPEB)	11,592.00
299	All Other Employee Benefits	17,664.46
Total Personnel Services – Employee Benefits		\$3,044,280.72
300	<u>Purchased Professional and Technical Services</u>	
322	Professional Educational Services – Ius	61,641.27
329	Professional Educational Services – Other	2,068.50
330	Other Professional Services	130,016.45
340	Technical Services	102,838.63
350	Security / Safety Services	4,607.46
360	Employee Training and Development Services	80,778.39
390	Other Purchased Professional and Technical Services	123,953.07
Total Purchased Professional and Technical Services		\$505,903.77
400	<u>Purchased Property Services</u>	
410	Cleaning Services	18,355.95
420	Utility Services	82,796.03
430	Repairs and Maintenance Services	134,302.71
440	Rentals	90,818.73
460	Extermination Services	11,568.50
490	Other Purchased Property Services	53,031.03
Total Purchased Property Services		\$390,872.95
500	<u>Other Purchased Services</u>	
513	Contracted Carriers	1,679,517.02
516	Student Transportation Services From the IU	50,941.80
520	Insurance – General	200.00
522	Automotive Liability Insurance	8,077.00
523	General Property and Liability Insurance	118,963.00
530	Communications	66,020.47
549	Other Advertising/Public Relations	52,465.77
550	Printing and Binding	16,330.52
580	Travel	10,716.62
591	Services Purchased Locally	4,928.04
Total Other Purchased Services		\$2,008,160.24
600	<u>Supplies</u>	
610	General Supplies	632,558.46

LEA : 116605003     Mifflinburg Area SD

Printed 10/29/2024 3:10:22 PM

General Fund (10)

2000 Support Services

Total

600	<u>Supplies</u>	
620	Energy	492,775.05
640	Books and Periodicals	9,551.84
650	Supplies & Fees – Technology Related	338,174.61
Total Supplies		\$1,473,059.96
800	<u>Other Objects</u>	
810	Dues and Fees	16,291.08
820	Claims and Judgments Against the LEA	42,207.58
890	Miscellaneous Expenditures	6,907.21
Total Other Objects		\$65,405.87
Total 2000 Support Services		\$11,470,209.70

LEA : 116605003     Mifflinburg Area SD

Printed 10/29/2024 3:10:22 PM

General Fund (10)

2100 Support Services – Students	Elementary	Secondary	Federal	Total
<b>100 Personnel Services – Salaries</b>				
100 Personnel Services – Salaries	152,970.87	197,481.48	54,160.58	574,962.34
<b>Total Personnel Services – Salaries</b>	<b>\$152,970.87</b>	<b>\$197,481.48</b>	<b>\$54,160.58</b>	<b>\$574,962.34</b>
<b>200 Personnel Services – Employee Benefits</b>				
210 Group Insurance – Contracted Provider	51,935.24	71,703.26	9,236.50	169,292.50
220 Social Security Contributions	11,751.25	15,677.38	2,825.25	43,432.54
230 PSERS Retirement Contributions	50,472.76	60,218.65	12,885.55	183,319.50
250 Unemployment Compensation	135.61	221.32	137.79	680.55
260 Workers' Compensation	688.38	914.54	164.57	2,530.10
<b>Total Personnel Services – Employee Benefits</b>	<b>\$114,983.24</b>	<b>\$148,735.15</b>	<b>\$25,249.66</b>	<b>\$399,255.19</b>
<b>300 Purchased Professional and Technical Services</b>				
322 Professional Educational Services – lus	13,671.61	41,014.78		61,641.27
330 Other Professional Services	16,131.22	48,393.68		64,524.90
340 Technical Services	1,126.95	3,380.85		4,507.80
390 Other Purchased Professional and Technical Services	22,912.50	68,737.50	125.00	91,775.00
<b>Total Purchased Professional and Technical Services</b>	<b>\$53,842.28</b>	<b>\$161,526.81</b>	<b>\$125.00</b>	<b>\$222,448.97</b>
<b>500 Other Purchased Services</b>				
530 Communications	44.15			44.15
550 Printing and Binding	340.00			340.00
<b>Total Other Purchased Services</b>	<b>\$384.15</b>			<b>\$384.15</b>
<b>600 Supplies</b>				
610 General Supplies	10,871.35	17,502.01		28,442.70
650 Supplies & Fees – Technology Related	11,314.46	26,010.16	23,756.49	61,081.11
<b>Total Supplies</b>	<b>\$22,185.81</b>	<b>\$43,512.17</b>	<b>\$23,756.49</b>	<b>\$89,523.81</b>
<b>800 Other Objects</b>				
810 Dues and Fees		2,528.00		2,528.00
890 Miscellaneous Expenditures		5,131.34		5,131.34
<b>Total Other Objects</b>		<b>\$7,659.34</b>		<b>\$7,659.34</b>
<b>Total 2100 Support Services – Students</b>	<b>\$344,366.35</b>	<b>\$558,914.95</b>	<b>\$103,291.73</b>	<b>\$1,294,233.80</b>

LEA : 116605003     Mifflinburg Area SD

Printed 10/29/2024 3:10:22 PM

General Fund (10)

2120 Guidance Services	Elementary	Secondary	Federal	Total
<b>100 <u>Personnel Services – Salaries</u></b>				
100 Personnel Services – Salaries	147,018.85	179,625.41	22,133.43	348,777.69
<b>Total Personnel Services – Salaries</b>	<b>\$147,018.85</b>	<b>\$179,625.41</b>	<b>\$22,133.43</b>	<b>\$348,777.69</b>
<b>200 <u>Personnel Services – Employee Benefits</u></b>				
210 Group Insurance – Contracted Provider	51,377.36	70,029.64	9,118.00	130,525.00
220 Social Security Contributions	11,032.19	13,520.18	1,657.19	26,209.56
230 PSERS Retirement Contributions	50,999.45	61,798.71	7,525.35	120,323.51
250 Unemployment Compensation	123.83	186.00	122.88	432.71
260 Workers' Compensation	647.01	790.42	97.38	1,534.81
<b>Total Personnel Services – Employee Benefits</b>	<b>\$114,179.84</b>	<b>\$146,324.95</b>	<b>\$18,520.80</b>	<b>\$279,025.59</b>
<b>300 <u>Purchased Professional and Technical Services</u></b>				
330 Other Professional Services	8,612.50	25,837.50		34,450.00
340 Technical Services	1,126.95	3,380.85		4,507.80
390 Other Purchased Professional and Technical Services	22,912.50	68,737.50	125.00	91,775.00
<b>Total Purchased Professional and Technical Services</b>	<b>\$32,651.95</b>	<b>\$97,955.85</b>	<b>\$125.00</b>	<b>\$130,732.80</b>
<b>500 <u>Other Purchased Services</u></b>				
530 Communications	44.15			44.15
550 Printing and Binding	340.00			340.00
<b>Total Other Purchased Services</b>	<b>\$384.15</b>			<b>\$384.15</b>
<b>600 <u>Supplies</u></b>				
610 General Supplies	10,861.67	17,472.98		28,334.65
650 Supplies & Fees – Technology Related	9,394.68	20,250.83	23,756.49	53,402.00
<b>Total Supplies</b>	<b>\$20,256.35</b>	<b>\$37,723.81</b>	<b>\$23,756.49</b>	<b>\$81,736.65</b>
<b>800 <u>Other Objects</u></b>				
810 Dues and Fees		2,528.00		2,528.00
890 Miscellaneous Expenditures		5,131.34		5,131.34
<b>Total Other Objects</b>		<b>\$7,659.34</b>		<b>\$7,659.34</b>
<b>Total 2120 Guidance Services</b>	<b>\$314,491.14</b>	<b>\$469,289.36</b>	<b>\$64,535.72</b>	<b>\$848,316.22</b>



LEA : 116605003     Mifflinburg Area SD

Printed 10/29/2024 3:10:22 PM

General Fund (10)

2140 Psychological Services	Elementary	Secondary	Federal	Total
100 <u>Personnel Services – Salaries</u>				
100 Personnel Services – Salaries	5,952.02	17,856.07	29,057.15	52,865.24
Total Personnel Services – Salaries	\$5,952.02	\$17,856.07	\$29,057.15	\$52,865.24
200 <u>Personnel Services – Employee Benefits</u>				
210 Group Insurance – Contracted Provider	557.88	1,673.62	118.50	2,350.00
220 Social Security Contributions	719.06	2,157.20	1,168.06	4,044.32
230 PSERS Retirement Contributions	(526.69)	(1,580.06)	5,360.20	3,253.45
250 Unemployment Compensation	11.78	35.32	14.91	62.01
260 Workers' Compensation	41.37	124.12	67.19	232.68
Total Personnel Services – Employee Benefits	\$803.40	\$2,410.20	\$6,728.86	\$9,942.46
300 <u>Purchased Professional and Technical Services</u>				
322 Professional Educational Services – lus	3,550.00	10,650.00		14,200.00
330 Other Professional Services	7,518.72	22,556.18		30,074.90
Total Purchased Professional and Technical Services	\$11,068.72	\$33,206.18		\$44,274.90
600 <u>Supplies</u>				
610 General Supplies	9.68	29.03		38.71
650 Supplies & Fees – Technology Related	1,919.78	5,759.33		7,679.11
Total Supplies	\$1,929.46	\$5,788.36		\$7,717.82
Total 2140 Psychological Services	\$19,753.60	\$59,260.81	\$35,786.01	\$114,800.42

LEA : 116605003     Mifflinburg Area SD

Printed 10/29/2024 3:10:22 PM

General Fund (10)

2150 Speech Pathology and Audiology Services	<u>Elementary</u>	<u>Secondary</u>	<u>Federal</u>	<u>Total</u>
300 <u>Purchased Professional and Technical Services</u>				
322 Professional Educational Services – lus	10,121.61	30,364.78		40,486.39
Total Purchased Professional and Technical Services	\$10,121.61	\$30,364.78		\$40,486.39
Total 2150 Speech Pathology and Audiology Services	\$10,121.61	\$30,364.78		\$40,486.39

LEA : 116605003     Mifflinburg Area SD

Printed 10/29/2024 3:10:22 PM

General Fund (10)

2160 Social Work Services

	<u>Elementary</u>	<u>Secondary</u>	<u>Federal</u>	<u>Total</u>
100 <u>Personnel Services – Salaries</u>				
100 Personnel Services – Salaries			2,970.00	126,650.00
Total Personnel Services – Salaries			\$2,970.00	\$126,650.00
200 <u>Personnel Services – Employee Benefits</u>				
210 Group Insurance – Contracted Provider				10,792.00
220 Social Security Contributions				9,688.85
230 PSERS Retirement Contributions				43,440.24
250 Unemployment Compensation				123.84
260 Workers' Compensation				557.32
Total Personnel Services – Employee Benefits				\$64,602.25
300 <u>Purchased Professional and Technical Services</u>				
322 Professional Educational Services – Ius				6,954.88
Total Purchased Professional and Technical Services				\$6,954.88
600 <u>Supplies</u>				
610 General Supplies				69.34
Total Supplies				\$69.34
Total 2160 Social Work Services			\$2,970.00	\$198,276.47

LEA : 116605003     Mifflinburg Area SD

Printed 10/29/2024 3:10:22 PM

General Fund (10)

2170 Student Accounting Services	<u>Elementary</u>	<u>Secondary</u>	<u>Federal</u>	<u>Total</u>
100 <u>Personnel Services – Salaries</u>				
100 Personnel Services – Salaries				46,669.41
Total Personnel Services – Salaries				\$46,669.41
200 <u>Personnel Services – Employee Benefits</u>				
210 Group Insurance – Contracted Provider				25,625.50
220 Social Security Contributions				3,489.81
230 PSERS Retirement Contributions				16,302.30
250 Unemployment Compensation				61.99
260 Workers' Compensation				205.29
Total Personnel Services – Employee Benefits				\$45,684.89
Total 2170 Student Accounting Services				\$92,354.30

LEA : 116605003     Mifflinburg Area SD

Printed 10/29/2024 3:10:22 PM

General Fund (10)

2200 Support Services – Instructional Staff	Elementary	Secondary	Federal	Total
<b>100 Personnel Services – Salaries</b>				
100 Personnel Services – Salaries	219,238.67	305,908.83	1,008.00	526,155.50
<b>Total Personnel Services – Salaries</b>	<b>\$219,238.67</b>	<b>\$305,908.83</b>	<b>\$1,008.00</b>	<b>\$526,155.50</b>
<b>200 Personnel Services – Employee Benefits</b>				
210 Group Insurance – Contracted Provider	50,335.63	61,159.87		111,495.50
220 Social Security Contributions	17,287.78	23,435.16	76.31	40,799.25
230 PSERS Retirement Contributions	73,336.69	100,256.83	347.67	173,941.19
240 Tuition Reimbursement	41,332.14	49,643.75		90,975.89
250 Unemployment Compensation	365.36	334.13	0.35	699.84
260 Workers' Compensation	961.44	1,336.66	4.45	2,302.55
280 Other Post-Employment Benefits (OPEB)	3,750.00	11,250.00		15,000.00
299 All Other Employee Benefits	600.00	1,800.00		2,400.00
<b>Total Personnel Services – Employee Benefits</b>	<b>\$187,969.04</b>	<b>\$249,216.40</b>	<b>\$428.78</b>	<b>\$437,614.22</b>
<b>300 Purchased Professional and Technical Services</b>				
360 Employee Training and Development Services	14,041.86	7,096.38	48,293.00	69,431.24
<b>Total Purchased Professional and Technical Services</b>	<b>\$14,041.86</b>	<b>\$7,096.38</b>	<b>\$48,293.00</b>	<b>\$69,431.24</b>
<b>500 Other Purchased Services</b>				
530 Communications	300.00	900.00		1,200.00
580 Travel	357.85	367.33		725.18
<b>Total Other Purchased Services</b>	<b>\$657.85</b>	<b>\$1,267.33</b>		<b>\$1,925.18</b>
<b>600 Supplies</b>				
610 General Supplies	2,574.27	2,545.74		5,120.01
640 Books and Periodicals	5,297.85	4,253.99		9,551.84
650 Supplies & Fees – Technology Related	11,817.64	24,092.16		35,909.80
<b>Total Supplies</b>	<b>\$19,689.76</b>	<b>\$30,891.89</b>		<b>\$50,581.65</b>
<b>800 Other Objects</b>				
810 Dues and Fees	25.00	307.00		332.00
<b>Total Other Objects</b>	<b>\$25.00</b>	<b>\$307.00</b>		<b>\$332.00</b>
<b>Total 2200 Support Services – Instructional Staff</b>	<b>\$441,622.18</b>	<b>\$594,687.83</b>	<b>\$49,729.78</b>	<b>\$1,086,039.79</b>

LEA : 116605003     Mifflinburg Area SD

Printed 10/29/2024 3:10:22 PM

General Fund (10)

2250 School Library Services	Elementary	Secondary	Federal	Total
100 <u>Personnel Services – Salaries</u>				
100 Personnel Services – Salaries	132,258.30	88,717.50		220,975.80
Total Personnel Services – Salaries	\$132,258.30	\$88,717.50		\$220,975.80
200 <u>Personnel Services – Employee Benefits</u>				
210 Group Insurance – Contracted Provider	29,949.00			29,949.00
220 Social Security Contributions	10,058.16	6,745.08		16,803.24
230 PSERS Retirement Contributions	44,396.43	29,754.43		74,150.86
250 Unemployment Compensation	284.15	184.30		468.45
260 Workers' Compensation	581.84	390.51		972.35
Total Personnel Services – Employee Benefits	\$85,269.58	\$37,074.32		\$122,343.90
600 <u>Supplies</u>				
610 General Supplies	2,284.83	1,677.40		3,962.23
640 Books and Periodicals	5,297.85	4,253.99		9,551.84
650 Supplies & Fees – Technology Related	5,202.63	4,247.13		9,449.76
Total Supplies	\$12,785.31	\$10,178.52		\$22,963.83
800 <u>Other Objects</u>				
810 Dues and Fees		232.00		232.00
Total Other Objects		\$232.00		\$232.00
Total 2250 School Library Services	\$230,313.19	\$136,202.34		\$366,515.53

LEA : 116605003     Mifflinburg Area SD

Printed 10/29/2024 3:10:22 PM

General Fund (10)

2260 Instruction and Curriculum Development Services

	<u>Elementary</u>	<u>Secondary</u>	<u>Federal</u>	<u>Total</u>
<b>100 <u>Personnel Services – Salaries</u></b>				
100 Personnel Services – Salaries	71,148.93	213,446.82	560.00	285,155.75
<b>Total Personnel Services – Salaries</b>	<b>\$71,148.93</b>	<b>\$213,446.82</b>	<b>\$560.00</b>	<b>\$285,155.75</b>
<b>200 <u>Personnel Services – Employee Benefits</u></b>				
210 Group Insurance – Contracted Provider	20,386.63	61,159.87		81,546.50
220 Social Security Contributions	5,341.96	16,025.90	42.19	21,410.05
230 PSERS Retirement Contributions	22,979.33	68,937.99	190.40	92,107.72
250 Unemployment Compensation	49.24	147.75		196.99
260 Workers' Compensation	309.89	929.68	2.46	1,242.03
280 Other Post-Employment Benefits (OPEB)	3,750.00	11,250.00		15,000.00
299 All Other Employee Benefits	600.00	1,800.00		2,400.00
<b>Total Personnel Services – Employee Benefits</b>	<b>\$53,417.05</b>	<b>\$160,251.19</b>	<b>\$235.05</b>	<b>\$213,903.29</b>
<b>500 <u>Other Purchased Services</u></b>				
530 Communications	300.00	900.00		1,200.00
580 Travel	116.66	349.96		466.62
<b>Total Other Purchased Services</b>	<b>\$416.66</b>	<b>\$1,249.96</b>		<b>\$1,666.62</b>
<b>600 <u>Supplies</u></b>				
610 General Supplies	275.49	826.48		1,101.97
650 Supplies & Fees – Technology Related	6,615.01	19,845.03		26,460.04
<b>Total Supplies</b>	<b>\$6,890.50</b>	<b>\$20,671.51</b>		<b>\$27,562.01</b>
<b>800 <u>Other Objects</u></b>				
810 Dues and Fees	25.00	75.00		100.00
<b>Total Other Objects</b>	<b>\$25.00</b>	<b>\$75.00</b>		<b>\$100.00</b>
<b>Total 2260 Instruction and Curriculum Development Services</b>	<b>\$131,898.14</b>	<b>\$395,694.48</b>	<b>\$795.05</b>	<b>\$528,387.67</b>

LEA : 116605003     Mifflinburg Area SD

Printed 10/29/2024 3:10:22 PM

General Fund (10)

2270 Instructional Staff Professional Development Services	<u>Elementary</u>	<u>Secondary</u>	<u>Federal</u>	<u>Total</u>
100 <u>Personnel Services – Salaries</u>				
100 Personnel Services – Salaries	15,574.11	3,744.51	448.00	19,766.62
Total Personnel Services – Salaries	\$15,574.11	\$3,744.51	\$448.00	\$19,766.62
200 <u>Personnel Services – Employee Benefits</u>				
220 Social Security Contributions	1,868.76	664.18	34.12	2,567.06
230 PSERS Retirement Contributions	5,873.44	1,564.41	157.27	7,595.12
240 Tuition Reimbursement	41,332.14	49,643.75		90,975.89
250 Unemployment Compensation	30.47	2.08	0.35	32.90
260 Workers' Compensation	68.57	16.47	1.99	87.03
Total Personnel Services – Employee Benefits	\$49,173.38	\$51,890.89	\$193.73	\$101,258.00
300 <u>Purchased Professional and Technical Services</u>				
360 Employee Training and Development Services	14,041.86	7,096.38	48,293.00	69,431.24
Total Purchased Professional and Technical Services	\$14,041.86	\$7,096.38	\$48,293.00	\$69,431.24
500 <u>Other Purchased Services</u>				
580 Travel	241.19	17.37		258.56
Total Other Purchased Services	\$241.19	\$17.37		\$258.56
600 <u>Supplies</u>				
610 General Supplies	13.95	41.86		55.81
Total Supplies	\$13.95	\$41.86		\$55.81
Total 2270 Instructional Staff Professional Development Services	\$79,044.49	\$62,791.01	\$48,934.73	\$190,770.23



LEA : 116605003     Mifflinburg Area SD

Printed 10/29/2024 3:10:22 PM

General Fund (10)

2290 Other Instructional Staff Services	<u>Elementary</u>	<u>Secondary</u>	<u>Federal</u>	<u>Total</u>
100 <u>Personnel Services – Salaries</u>				
100 Personnel Services – Salaries	257.33			257.33
Total Personnel Services – Salaries	\$257.33			\$257.33
200 <u>Personnel Services – Employee Benefits</u>				
220 Social Security Contributions	18.90			18.90
230 PSERS Retirement Contributions	87.49			87.49
250 Unemployment Compensation	1.50			1.50
260 Workers' Compensation	1.14			1.14
Total Personnel Services – Employee Benefits	\$109.03			\$109.03
Total 2290 Other Instructional Staff Services	\$366.36			\$366.36

LEA : 116605003     Mifflinburg Area SD

Printed 10/29/2024 3:10:22 PM

General Fund (10)

2300 Support Services – Administration	Elementary	Secondary	Federal	Total
<b>100 Personnel Services – Salaries</b>				
100 Personnel Services – Salaries	403,247.97	406,125.59		1,083,045.83
<b>Total Personnel Services – Salaries</b>	<b>\$403,247.97</b>	<b>\$406,125.59</b>		<b>\$1,083,045.83</b>
<b>200 Personnel Services – Employee Benefits</b>				
210 Group Insurance – Contracted Provider	111,759.34	118,280.44		315,028.00
220 Social Security Contributions	30,694.57	30,588.67		82,093.42
230 PSERS Retirement Contributions	134,492.82	136,312.86		363,478.08
250 Unemployment Compensation	436.30	373.42		1,074.21
260 Workers' Compensation	1,774.26	1,786.84		4,765.20
280 Other Post-Employment Benefits (OPEB)				(3,408.00)
299 All Other Employee Benefits	3,337.45	3,801.89		9,984.30
<b>Total Personnel Services – Employee Benefits</b>	<b>\$282,494.74</b>	<b>\$291,144.12</b>		<b>\$773,015.21</b>
<b>300 Purchased Professional and Technical Services</b>				
330 Other Professional Services				56,391.55
390 Other Purchased Professional and Technical Services				96.72
<b>Total Purchased Professional and Technical Services</b>				<b>\$56,488.27</b>
<b>500 Other Purchased Services</b>				
520 Insurance – General		200.00		200.00
530 Communications	4,126.47	4,273.67		18,025.61
549 Other Advertising/Public Relations				52,465.77
550 Printing and Binding	252.00	1,397.50		15,990.52
580 Travel		58.86		3,530.14
591 Services Purchased Locally				4,928.04
<b>Total Other Purchased Services</b>	<b>\$4,378.47</b>	<b>\$5,930.03</b>		<b>\$95,140.08</b>
<b>600 Supplies</b>				
610 General Supplies	4,587.73	2,790.08		15,541.28
<b>Total Supplies</b>	<b>\$4,587.73</b>	<b>\$2,790.08</b>		<b>\$15,541.28</b>
<b>800 Other Objects</b>				
810 Dues and Fees	1,933.85	1,512.15		11,033.58
820 Claims and Judgments Against the LEA				42,207.58
<b>Total Other Objects</b>	<b>\$1,933.85</b>	<b>\$1,512.15</b>		<b>\$53,241.16</b>
<b>Total 2300 Support Services – Administration</b>	<b>\$696,642.76</b>	<b>\$707,501.97</b>		<b>\$2,076,471.83</b>

LEA : 116605003     Mifflinburg Area SD

Printed 10/29/2024 3:10:22 PM

General Fund (10)

2310 Board Services

Elementary                      Secondary                      Federal                      Total

300 <u>Purchased Professional and Technical Services</u>				
330 Other Professional Services				600.00
390 Other Purchased Professional and Technical Services				96.72
Total Purchased Professional and Technical Services				\$696.72
500 <u>Other Purchased Services</u>				
549 Other Advertising/Public Relations				52,465.77
Total Other Purchased Services				\$52,465.77
600 <u>Supplies</u>				
610 General Supplies				267.67
Total Supplies				\$267.67
800 <u>Other Objects</u>				
810 Dues and Fees				2,750.00
820 Claims and Judgments Against the LEA				42,207.58
Total Other Objects				\$44,957.58
Total 2310 Board Services				\$98,387.74

LEA : 116605003     Mifflinburg Area SD

Printed 10/29/2024 3:10:22 PM

General Fund (10)

2330 Tax Assessment and Collection Services	<u>Elementary</u>	<u>Secondary</u>	<u>Federal</u>	<u>Total</u>
100 <u>Personnel Services – Salaries</u>				
100 Personnel Services – Salaries				2,663.25
Total Personnel Services – Salaries				\$2,663.25
200 <u>Personnel Services – Employee Benefits</u>				
220 Social Security Contributions				203.74
250 Unemployment Compensation				16.50
260 Workers’ Compensation				11.72
Total Personnel Services – Employee Benefits				\$231.96
500 <u>Other Purchased Services</u>				
530 Communications				9,025.47
550 Printing and Binding				11,288.28
591 Services Purchased Locally				4,928.04
Total Other Purchased Services				\$25,241.79
600 <u>Supplies</u>				
610 General Supplies				25.70
Total Supplies				\$25.70
Total 2330 Tax Assessment and Collection Services				\$28,162.70

LEA : 116605003     Mifflinburg Area SD

Printed 10/29/2024 3:10:22 PM

General Fund (10)

2350 Legal and Accounting Services	<u>Elementary</u>	<u>Secondary</u>	<u>Federal</u>	<u>Total</u>
300 <u>Purchased Professional and Technical Services</u>				
330 Other Professional Services				55,791.55
Total Purchased Professional and Technical Services				\$55,791.55
500 <u>Other Purchased Services</u>				
580 Travel				1,689.30
Total Other Purchased Services				\$1,689.30
Total 2350 Legal and Accounting Services				\$57,480.85

LEA : 116605003     Mifflinburg Area SD

Printed 10/29/2024 3:10:22 PM

General Fund (10)

2360 Office of the Superintendent / Executive Director Services

Elementary                      Secondary                      Federal                      Total

100 <u>Personnel Services – Salaries</u>				
100 Personnel Services – Salaries				188,549.92
<b>Total Personnel Services – Salaries</b>				<b>\$188,549.92</b>
200 <u>Personnel Services – Employee Benefits</u>				
210 Group Insurance – Contracted Provider				58,126.34
220 Social Security Contributions				14,371.60
230 PSERS Retirement Contributions				64,541.65
250 Unemployment Compensation				124.01
260 Workers' Compensation				829.66
280 Other Post-Employment Benefits (OPEB)				(3,408.00)
299 All Other Employee Benefits				1,644.96
<b>Total Personnel Services – Employee Benefits</b>				<b>\$136,230.22</b>
500 <u>Other Purchased Services</u>				
530 Communications	218.75	656.25		875.00
550 Printing and Binding				340.00
580 Travel				1,505.63
<b>Total Other Purchased Services</b>	<b>\$218.75</b>	<b>\$656.25</b>		<b>\$2,720.63</b>
600 <u>Supplies</u>				
610 General Supplies				2,671.70
<b>Total Supplies</b>				<b>\$2,671.70</b>
800 <u>Other Objects</u>				
810 Dues and Fees				4,837.58
<b>Total Other Objects</b>				<b>\$4,837.58</b>
<b>Total 2360 Office of the Superintendent / Executive Director Services</b>	<b>\$218.75</b>	<b>\$656.25</b>		<b>\$335,010.05</b>

LEA : 116605003     Mifflinburg Area SD

Printed 10/29/2024 3:10:22 PM

General Fund (10)

2370 Community Relations Services	<u>Elementary</u>	<u>Secondary</u>	<u>Federal</u>	<u>Total</u>
500 <u>Other Purchased Services</u>				
550 Printing and Binding				2,525.00
Total Other Purchased Services				\$2,525.00
Total 2370 Community Relations Services				\$2,525.00

LEA : 116605003     Mifflinburg Area SD

Printed 10/29/2024 3:10:22 PM

General Fund (10)

2380 Office of the Principal Services	Elementary	Secondary	Federal	Total
100 <u>Personnel Services – Salaries</u>				
100 Personnel Services – Salaries	403,247.97	406,125.59		809,373.56
Total Personnel Services – Salaries	\$403,247.97	\$406,125.59		\$809,373.56
200 <u>Personnel Services – Employee Benefits</u>				
210 Group Insurance – Contracted Provider	111,759.34	118,280.44		230,039.78
220 Social Security Contributions	30,694.57	30,588.67		61,283.24
230 PSERS Retirement Contributions	134,492.82	136,312.86		270,805.68
250 Unemployment Compensation	436.30	373.42		809.72
260 Workers' Compensation	1,774.26	1,786.84		3,561.10
299 All Other Employee Benefits	3,337.45	3,801.89		7,139.34
Total Personnel Services – Employee Benefits	\$282,494.74	\$291,144.12		\$573,638.86
500 <u>Other Purchased Services</u>				
520 Insurance – General		200.00		200.00
530 Communications	3,907.72	3,617.42		7,525.14
550 Printing and Binding	252.00	1,397.50		1,649.50
580 Travel		58.86		58.86
Total Other Purchased Services	\$4,159.72	\$5,273.78		\$9,433.50
600 <u>Supplies</u>				
610 General Supplies	4,587.73	2,790.08		7,377.81
Total Supplies	\$4,587.73	\$2,790.08		\$7,377.81
800 <u>Other Objects</u>				
810 Dues and Fees	1,933.85	1,512.15		3,446.00
Total Other Objects	\$1,933.85	\$1,512.15		\$3,446.00
Total 2380 Office of the Principal Services	\$696,424.01	\$706,845.72		\$1,403,269.73



LEA : 116605003     Mifflinburg Area SD

Printed 10/29/2024 3:10:22 PM

General Fund (10)

2390 Other Administration Services	<u>Elementary</u>	<u>Secondary</u>	<u>Federal</u>	<u>Total</u>
100 <u>Personnel Services – Salaries</u>				
100 Personnel Services – Salaries				82,459.10
Total Personnel Services – Salaries				\$82,459.10
200 <u>Personnel Services – Employee Benefits</u>				
210 Group Insurance – Contracted Provider				26,861.88
220 Social Security Contributions				6,234.84
230 PSERS Retirement Contributions				28,130.75
250 Unemployment Compensation				123.98
260 Workers' Compensation				362.72
299 All Other Employee Benefits				1,200.00
Total Personnel Services – Employee Benefits				\$62,914.17
500 <u>Other Purchased Services</u>				
530 Communications				600.00
550 Printing and Binding				187.74
580 Travel				276.35
Total Other Purchased Services				\$1,064.09
600 <u>Supplies</u>				
610 General Supplies				5,198.40
Total Supplies				\$5,198.40
Total 2390 Other Administration Services				\$151,635.76

LEA : 116605003      Mifflinburg Area SD

Printed 10/29/2024 3:10:22 PM

General Fund (10)

2400 Support Services – Pupil Health	<u>Elementary</u>	<u>Secondary</u>	<u>Federal</u>	<u>Total</u>
100 <u>Personnel Services – Salaries</u>				
100 Personnel Services – Salaries				186,221.26
Total Personnel Services – Salaries				\$186,221.26
200 <u>Personnel Services – Employee Benefits</u>				
210 Group Insurance – Contracted Provider				69,778.00
220 Social Security Contributions				13,901.52
230 PSERS Retirement Contributions				61,160.17
250 Unemployment Compensation				326.72
260 Workers' Compensation				819.65
Total Personnel Services – Employee Benefits				\$145,986.06
300 <u>Purchased Professional and Technical Services</u>				
329 Professional Educational Services – Other				2,068.50
330 Other Professional Services				2,900.00
Total Purchased Professional and Technical Services				\$4,968.50
400 <u>Purchased Property Services</u>				
430 Repairs and Maintenance Services				276.40
Total Purchased Property Services				\$276.40
600 <u>Supplies</u>				
610 General Supplies				6,840.03
Total Supplies				\$6,840.03
Total 2400 Support Services – Pupil Health				\$344,292.25

LEA : 116605003     Mifflinburg Area SD

Printed 10/29/2024 3:10:22 PM

General Fund (10)

2420 Medical Services

<u>Elementary</u>	<u>Secondary</u>	<u>Federal</u>	<u>Total</u>
-------------------	------------------	----------------	--------------

300 Purchased Professional and Technical Services

330 Other Professional Services			2,250.00
---------------------------------	--	--	----------

<b>Total Purchased Professional and Technical Services</b>			<b>\$2,250.00</b>
--	--	--	-------------------

<b>Total 2420 Medical Services</b>			<b>\$2,250.00</b>
------------------------------------	--	--	-------------------

LEA : 116605003     Mifflinburg Area SD

Printed 10/29/2024 3:10:22 PM

General Fund (10)

2430 Dental Services

<u>Elementary</u>	<u>Secondary</u>	<u>Federal</u>	<u>Total</u>
-------------------	------------------	----------------	--------------

300 Purchased Professional and Technical Services

330 Other Professional Services			650.00
---------------------------------	--	--	--------

<b>Total Purchased Professional and Technical Services</b>			<b>\$650.00</b>
--	--	--	-----------------

<b>Total 2430 Dental Services</b>			<b>\$650.00</b>
-----------------------------------	--	--	-----------------

LEA : 116605003     Mifflinburg Area SD

Printed 10/29/2024 3:10:22 PM

General Fund (10)

2440 Nursing Services

Elementary                      Secondary                      Federal                      Total

100 <u>Personnel Services – Salaries</u>				
100 Personnel Services – Salaries				186,221.26
<b>Total Personnel Services – Salaries</b>				<b>\$186,221.26</b>
200 <u>Personnel Services – Employee Benefits</u>				
210 Group Insurance – Contracted Provider				69,778.00
220 Social Security Contributions				13,901.52
230 PSERS Retirement Contributions				61,160.17
250 Unemployment Compensation				326.72
260 Workers' Compensation				819.65
<b>Total Personnel Services – Employee Benefits</b>				<b>\$145,986.06</b>
300 <u>Purchased Professional and Technical Services</u>				
329 Professional Educational Services – Other				2,068.50
<b>Total Purchased Professional and Technical Services</b>				<b>\$2,068.50</b>
400 <u>Purchased Property Services</u>				
430 Repairs and Maintenance Services				276.40
<b>Total Purchased Property Services</b>				<b>\$276.40</b>
600 <u>Supplies</u>				
610 General Supplies				6,840.03
<b>Total Supplies</b>				<b>\$6,840.03</b>
<b>Total 2440 Nursing Services</b>				<b>\$341,392.25</b>

LEA : 116605003     Mifflinburg Area SD

Printed 10/29/2024 3:10:22 PM

General Fund (10)

2500 Support Services – Business	<u>Elementary</u>	<u>Secondary</u>	<u>Federal</u>	<u>Total</u>
100 <u>Personnel Services – Salaries</u>				
100 Personnel Services – Salaries				238,524.95
Total Personnel Services – Salaries				\$238,524.95
200 <u>Personnel Services – Employee Benefits</u>				
210 Group Insurance – Contracted Provider				100,921.40
220 Social Security Contributions				17,976.29
230 PSERS Retirement Contributions				82,360.36
250 Unemployment Compensation				247.95
260 Workers' Compensation				1,049.10
299 All Other Employee Benefits				1,500.00
Total Personnel Services – Employee Benefits				\$204,055.10
300 <u>Purchased Professional and Technical Services</u>				
330 Other Professional Services				6,200.00
Total Purchased Professional and Technical Services				\$6,200.00
500 <u>Other Purchased Services</u>				
530 Communications				600.00
580 Travel				15.66
Total Other Purchased Services				\$615.66
600 <u>Supplies</u>				
610 General Supplies				8,041.63
650 Supplies & Fees – Technology Related				43,663.03
Total Supplies				\$51,704.66
800 <u>Other Objects</u>				
810 Dues and Fees				1,747.50
890 Miscellaneous Expenditures				1,775.87
Total Other Objects				\$3,523.37
Total 2500 Support Services – Business				\$504,623.74

LEA : 116605003     Mifflinburg Area SD

Printed 10/29/2024 3:10:22 PM

General Fund (10)

2510 Fiscal Services

	<u>Elementary</u>	<u>Secondary</u>	<u>Federal</u>	<u>Total</u>
<b>100 <u>Personnel Services – Salaries</u></b>				
100 Personnel Services – Salaries				238,524.95
<b>Total Personnel Services – Salaries</b>				<b>\$238,524.95</b>
<b>200 <u>Personnel Services – Employee Benefits</u></b>				
210 Group Insurance – Contracted Provider				100,921.40
220 Social Security Contributions				17,976.29
230 PSERS Retirement Contributions				82,360.36
250 Unemployment Compensation				247.95
260 Workers' Compensation				1,049.10
299 All Other Employee Benefits				1,500.00
<b>Total Personnel Services – Employee Benefits</b>				<b>\$204,055.10</b>
<b>500 <u>Other Purchased Services</u></b>				
530 Communications				600.00
580 Travel				15.66
<b>Total Other Purchased Services</b>				<b>\$615.66</b>
<b>600 <u>Supplies</u></b>				
610 General Supplies				8,041.63
650 Supplies & Fees – Technology Related				43,663.03
<b>Total Supplies</b>				<b>\$51,704.66</b>
<b>800 <u>Other Objects</u></b>				
810 Dues and Fees				1,747.50
890 Miscellaneous Expenditures				1,775.87
<b>Total Other Objects</b>				<b>\$3,523.37</b>
<b>Total 2510 Fiscal Services</b>				<b>\$498,423.74</b>

LEA : 116605003     Mifflinburg Area SD

Printed 10/29/2024 3:10:22 PM

General Fund (10)

2511 Supervision of Fiscal Services - Head of Component	<u>Elementary</u>	<u>Secondary</u>	<u>Federal</u>	<u>Total</u>
100 <u>Personnel Services – Salaries</u>				
100 Personnel Services – Salaries				109,710.00
Total Personnel Services – Salaries				\$109,710.00
200 <u>Personnel Services – Employee Benefits</u>				
210 Group Insurance – Contracted Provider				29,450.40
220 Social Security Contributions				8,398.31
230 PSERS Retirement Contributions				37,736.13
250 Unemployment Compensation				62.00
260 Workers' Compensation				482.82
299 All Other Employee Benefits				1,500.00
Total Personnel Services – Employee Benefits				\$77,629.66
500 <u>Other Purchased Services</u>				
530 Communications				600.00
580 Travel				15.66
Total Other Purchased Services				\$615.66
600 <u>Supplies</u>				
610 General Supplies				7,786.63
650 Supplies & Fees – Technology Related				300.00
Total Supplies				\$8,086.63
800 <u>Other Objects</u>				
810 Dues and Fees				345.00
890 Miscellaneous Expenditures				1,775.87
Total Other Objects				\$2,120.87
Total 2511 Supervision of Fiscal Services - Head of Component				\$198,162.82



LEA : 116605003     Mifflinburg Area SD

Printed 10/29/2024 3:10:22 PM

General Fund (10)

2513 Receiving and Disbursing Funds Services	<u>Elementary</u>	<u>Secondary</u>	<u>Federal</u>	<u>Total</u>
100 <u>Personnel Services – Salaries</u>				
100 Personnel Services – Salaries				78,689.95
Total Personnel Services – Salaries				\$78,689.95
200 <u>Personnel Services – Employee Benefits</u>				
210 Group Insurance – Contracted Provider				47,927.50
220 Social Security Contributions				5,785.05
230 PSERS Retirement Contributions				27,189.41
250 Unemployment Compensation				123.97
260 Workers' Compensation				346.32
Total Personnel Services – Employee Benefits				\$81,372.25
600 <u>Supplies</u>				
610 General Supplies				255.00
650 Supplies & Fees – Technology Related				3,585.00
Total Supplies				\$3,840.00
Total 2513 Receiving and Disbursing Funds Services				\$163,902.20

LEA : 116605003     Mifflinburg Area SD

Printed 10/29/2024 3:10:22 PM

General Fund (10)

2514 Payroll Services

	<u>Elementary</u>	<u>Secondary</u>	<u>Federal</u>	<u>Total</u>
100 <u>Personnel Services – Salaries</u>				
100 Personnel Services – Salaries				50,125.00
Total Personnel Services – Salaries				\$50,125.00
200 <u>Personnel Services – Employee Benefits</u>				
210 Group Insurance – Contracted Provider				23,543.50
220 Social Security Contributions				3,792.93
230 PSERS Retirement Contributions				17,434.82
250 Unemployment Compensation				61.98
260 Workers' Compensation				219.96
Total Personnel Services – Employee Benefits				\$45,053.19
600 <u>Supplies</u>				
650 Supplies & Fees – Technology Related				21,316.19
Total Supplies				\$21,316.19
Total 2514 Payroll Services				\$116,494.38

LEA : 116605003     Mifflinburg Area SD

Printed 10/29/2024 3:10:22 PM

General Fund (10)

2515 Financial Accounting Services	<u>Elementary</u>	<u>Secondary</u>	<u>Federal</u>	<u>Total</u>
600 <u>Supplies</u>				
650 Supplies & Fees – Technology Related				16,451.20
Total Supplies				\$16,451.20
Total 2515 Financial Accounting Services				\$16,451.20

LEA : 116605003     Mifflinburg Area SD

Printed 10/29/2024 3:10:22 PM

General Fund (10)

2517 Property Accounting Services	<u>Elementary</u>	<u>Secondary</u>	<u>Federal</u>	<u>Total</u>
600 <u>Supplies</u>				
650 Supplies & Fees – Technology Related				2,010.64
Total Supplies				\$2,010.64
Total 2517 Property Accounting Services				\$2,010.64

LEA : 116605003     Mifflinburg Area SD

Printed 10/29/2024 3:10:22 PM

General Fund (10)				
2519 Other Fiscal Services	<u>Elementary</u>	<u>Secondary</u>	<u>Federal</u>	<u>Total</u>
800 <u>Other Objects</u>				
810 Dues and Fees				1,402.50
Total Other Objects				\$1,402.50
Total 2519 Other Fiscal Services				\$1,402.50

LEA : 116605003     Mifflinburg Area SD

Printed 10/29/2024 3:10:22 PM

General Fund (10)

2590 Other Support Services – Business	<u>Elementary</u>	<u>Secondary</u>	<u>Federal</u>	<u>Total</u>
300 <u>Purchased Professional and Technical Services</u>				
330 Other Professional Services				6,200.00
Total Purchased Professional and Technical Services				\$6,200.00
Total 2590 Other Support Services – Business				\$6,200.00

LEA : 116605003     Mifflinburg Area SD

Printed 10/29/2024 3:10:22 PM

General Fund (10)

2600 Operation and Maintenance of Plant Services	<u>Elementary</u>	<u>Secondary</u>	<u>Federal</u>	<u>Total</u>
<b>100 <u>Personnel Services – Salaries</u></b>				
100 Personnel Services – Salaries				1,080,179.99
<b>Total Personnel Services – Salaries</b>				<b>\$1,080,179.99</b>
<b>200 <u>Personnel Services – Employee Benefits</u></b>				
210 Group Insurance – Contracted Provider				471,245.68
220 Social Security Contributions				80,922.78
230 PSERS Retirement Contributions				319,870.71
250 Unemployment Compensation				1,759.49
260 Workers' Compensation				4,727.98
299 All Other Employee Benefits				1,270.16
<b>Total Personnel Services – Employee Benefits</b>				<b>\$879,796.80</b>
<b>300 <u>Purchased Professional and Technical Services</u></b>				
350 Security / Safety Services				4,607.46
390 Other Purchased Professional and Technical Services				24,975.00
<b>Total Purchased Professional and Technical Services</b>				<b>\$29,582.46</b>
<b>400 <u>Purchased Property Services</u></b>				
410 Cleaning Services				18,355.95
420 Utility Services				80,623.95
430 Repairs and Maintenance Services				129,148.36
440 Rentals				712.05
460 Extermination Services				11,568.50
490 Other Purchased Property Services				53,031.03
<b>Total Purchased Property Services</b>				<b>\$293,439.84</b>
<b>500 <u>Other Purchased Services</u></b>				
522 Automotive Liability Insurance				8,077.00
523 General Property and Liability Insurance				118,963.00
530 Communications				1,495.00
580 Travel				1,691.93
<b>Total Other Purchased Services</b>				<b>\$130,226.93</b>
<b>600 <u>Supplies</u></b>				
610 General Supplies	73,841.38	197,966.25		271,807.63
620 Energy				487,166.67
650 Supplies & Fees – Technology Related				3,379.30
<b>Total Supplies</b>	<b>\$73,841.38</b>	<b>\$197,966.25</b>		<b>\$762,353.60</b>
<b>800 <u>Other Objects</u></b>				
810 Dues and Fees				125.00
<b>Total Other Objects</b>				<b>\$125.00</b>
<b>Total 2600 Operation and Maintenance of Plant Services</b>	<b>\$73,841.38</b>	<b>\$197,966.25</b>		<b>\$3,175,704.62</b>

LEA : 116605003     Mifflinburg Area SD

Printed 10/29/2024 3:10:22 PM

General Fund (10)

2610 Supervision of Operation and Maintenance of Plant Services	<u>Elementary</u>	<u>Secondary</u>	<u>Federal</u>	<u>Total</u>
100 <u>Personnel Services – Salaries</u>				
100 Personnel Services – Salaries				77,414.49
Total Personnel Services – Salaries				\$77,414.49
200 <u>Personnel Services – Employee Benefits</u>				
210 Group Insurance – Contracted Provider				28,336.84
220 Social Security Contributions				5,790.69
230 PSERS Retirement Contributions				26,415.76
250 Unemployment Compensation				61.99
260 Workers' Compensation				340.58
299 All Other Employee Benefits				1,270.16
Total Personnel Services – Employee Benefits				\$62,216.02
500 <u>Other Purchased Services</u>				
530 Communications				100.00
580 Travel				1,649.72
Total Other Purchased Services				\$1,749.72
800 <u>Other Objects</u>				
810 Dues and Fees				125.00
Total Other Objects				\$125.00
Total 2610 Supervision of Operation and Maintenance of Plant Services				\$141,505.23



LEA : 116605003     Mifflinburg Area SD

Printed 10/29/2024 3:10:22 PM

General Fund (10)

2611 Supervision of Operation and Maintenance of Plant Services – Head of Component	<u>Elementary</u>	<u>Secondary</u>	<u>Federal</u>	<u>Total</u>
100 <u>Personnel Services – Salaries</u>				
100 Personnel Services – Salaries				77,414.49
Total Personnel Services – Salaries				\$77,414.49
200 <u>Personnel Services – Employee Benefits</u>				
210 Group Insurance – Contracted Provider				28,336.84
220 Social Security Contributions				5,790.69
230 PSERS Retirement Contributions				26,415.76
250 Unemployment Compensation				61.99
260 Workers' Compensation				340.58
299 All Other Employee Benefits				1,270.16
Total Personnel Services – Employee Benefits				\$62,216.02
500 <u>Other Purchased Services</u>				
530 Communications				100.00
580 Travel				1,649.72
Total Other Purchased Services				\$1,749.72
800 <u>Other Objects</u>				
810 Dues and Fees				125.00
Total Other Objects				\$125.00
Total 2611 Supervision of Operation and Maintenance of Plant Services – Head of Component				\$141,505.23

LEA : 116605003     Mifflinburg Area SD

Printed 10/29/2024 3:10:22 PM

General Fund (10)

2620 Operation of Buildings Services	Elementary	Secondary	Federal	Total
100 <u>Personnel Services – Salaries</u>				
100 Personnel Services – Salaries				837,418.24
Total Personnel Services – Salaries				\$837,418.24
200 <u>Personnel Services – Employee Benefits</u>				
210 Group Insurance – Contracted Provider				442,908.84
220 Social Security Contributions				62,483.28
230 PSERS Retirement Contributions				280,564.58
250 Unemployment Compensation				1,432.00
260 Workers' Compensation				3,659.83
Total Personnel Services – Employee Benefits				\$791,048.53
300 <u>Purchased Professional and Technical Services</u>				
350 Security / Safety Services				4,607.46
Total Purchased Professional and Technical Services				\$4,607.46
400 <u>Purchased Property Services</u>				
410 Cleaning Services				18,355.95
420 Utility Services				80,623.95
430 Repairs and Maintenance Services				111,832.17
440 Rentals				101.85
460 Extermination Services				11,568.50
490 Other Purchased Property Services				33,330.43
Total Purchased Property Services				\$255,812.85
500 <u>Other Purchased Services</u>				
522 Automotive Liability Insurance				8,077.00
523 General Property and Liability Insurance				118,963.00
530 Communications				570.00
Total Other Purchased Services				\$127,610.00
600 <u>Supplies</u>				
610 General Supplies	63,741.74	167,307.37		231,049.11
620 Energy				477,812.96
650 Supplies & Fees – Technology Related				3,379.30
Total Supplies	\$63,741.74	\$167,307.37		\$712,241.37
Total 2620 Operation of Buildings Services	\$63,741.74	\$167,307.37		\$2,728,738.45

LEA : 116605003     Mifflinburg Area SD

Printed 10/29/2024 3:10:22 PM

General Fund (10)

2630 Care and Upkeep of Grounds Services	<u>Elementary</u>	<u>Secondary</u>	<u>Federal</u>	<u>Total</u>
400 <u>Purchased Property Services</u>				
430 Repairs and Maintenance Services				148.90
440 Rentals				610.20
490 Other Purchased Property Services				19,700.60
Total Purchased Property Services				\$20,459.70
600 <u>Supplies</u>				
610 General Supplies	4,108.78	12,686.27		16,795.05
Total Supplies	\$4,108.78	\$12,686.27		\$16,795.05
Total 2630 Care and Upkeep of Grounds Services	\$4,108.78	\$12,686.27		\$37,254.75

LEA : 116605003     Mifflinburg Area SD

Printed 10/29/2024 3:10:22 PM

General Fund (10)

2650 Vehicle Operation and Maintenance Services (Other Than Student Transportation Vehicles)	<u>Elementary</u>	<u>Secondary</u>	<u>Federal</u>	<u>Total</u>
400 <u>Purchased Property Services</u>				
430 Repairs and Maintenance Services				17,068.64
Total Purchased Property Services				\$17,068.64
600 <u>Supplies</u>				
610 General Supplies	249.49	748.48		997.97
620 Energy				9,353.71
Total Supplies	\$249.49	\$748.48		\$10,351.68
Total 2650 Vehicle Operation and Maintenance Services (Other Than Student Transportation Vehicles)	\$249.49	\$748.48		\$27,420.32

LEA : 116605003     Mifflinburg Area SD

Printed 10/29/2024 3:10:22 PM

General Fund (10)

2660 Safety and Security Services	<u>Elementary</u>	<u>Secondary</u>	<u>Federal</u>	<u>Total</u>
100 <u>Personnel Services – Salaries</u>				
100 Personnel Services – Salaries				165,347.26
Total Personnel Services – Salaries				\$165,347.26
200 <u>Personnel Services – Employee Benefits</u>				
220 Social Security Contributions				12,648.81
230 PSERS Retirement Contributions				12,890.37
250 Unemployment Compensation				265.50
260 Workers' Compensation				727.57
Total Personnel Services – Employee Benefits				\$26,532.25
300 <u>Purchased Professional and Technical Services</u>				
390 Other Purchased Professional and Technical Services				24,975.00
Total Purchased Professional and Technical Services				\$24,975.00
400 <u>Purchased Property Services</u>				
430 Repairs and Maintenance Services				98.65
Total Purchased Property Services				\$98.65
500 <u>Other Purchased Services</u>				
530 Communications				825.00
580 Travel				42.21
Total Other Purchased Services				\$867.21
600 <u>Supplies</u>				
610 General Supplies	5,741.37	17,224.13		22,965.50
Total Supplies	\$5,741.37	\$17,224.13		\$22,965.50
Total 2660 Safety and Security Services	\$5,741.37	\$17,224.13		\$240,785.87

LEA : 116605003     Mifflinburg Area SD

Printed 10/29/2024 3:10:22 PM

General Fund (10)

2700 Student Transportation Services		<u>Elementary</u>	<u>Secondary</u>	<u>Federal</u>	<u>Total</u>
100 <u>Personnel Services – Salaries</u>					
100 Personnel Services – Salaries					111,538.41
Total Personnel Services – Salaries					\$111,538.41
200 <u>Personnel Services – Employee Benefits</u>					
210 Group Insurance – Contracted Provider					27,539.31
220 Social Security Contributions					8,492.01
230 PSERS Retirement Contributions					39,099.93
250 Unemployment Compensation					199.14
260 Workers' Compensation					490.91
299 All Other Employee Benefits					1,200.00
Total Personnel Services – Employee Benefits					\$77,021.30
400 <u>Purchased Property Services</u>					
420 Utility Services					2,172.08
Total Purchased Property Services					\$2,172.08
500 <u>Other Purchased Services</u>					
513 Contracted Carriers				12,540.00	1,679,517.02
516 Student Transportation Services From the IU					50,941.80
530 Communications					150.00
Total Other Purchased Services				\$12,540.00	\$1,730,608.82
600 <u>Supplies</u>					
610 General Supplies					6,643.89
620 Energy					5,608.38
650 Supplies & Fees – Technology Related					6,100.00
Total Supplies					\$18,352.27
800 <u>Other Objects</u>					
810 Dues and Fees					125.00
Total Other Objects					\$125.00
Total 2700 Student Transportation Services				\$12,540.00	\$1,939,817.88

LEA : 116605003      Mifflinburg Area SD

Printed 10/29/2024 3:10:22 PM

General Fund (10)

2710 Supervision of Student Transportation Services	<u>Elementary</u>	<u>Secondary</u>	<u>Federal</u>	<u>Total</u>
100 <u>Personnel Services – Salaries</u>				
100 Personnel Services – Salaries				43,725.00
Total Personnel Services – Salaries				\$43,725.00
200 <u>Personnel Services – Employee Benefits</u>				
210 Group Insurance – Contracted Provider				12,564.81
220 Social Security Contributions				3,348.85
230 PSERS Retirement Contributions				15,173.87
250 Unemployment Compensation				31.01
260 Workers' Compensation				192.49
299 All Other Employee Benefits				1,200.00
Total Personnel Services – Employee Benefits				\$32,511.03
500 <u>Other Purchased Services</u>				
530 Communications				150.00
Total Other Purchased Services				\$150.00
800 <u>Other Objects</u>				
810 Dues and Fees				125.00
Total Other Objects				\$125.00
Total 2710 Supervision of Student Transportation Services				\$76,511.03

LEA : 116605003     Mifflinburg Area SD

Printed 10/29/2024 3:10:22 PM

General Fund (10)

2711 Supervision of Student Transportation Services – Head of Component	<u>Elementary</u>	<u>Secondary</u>	<u>Federal</u>	<u>Total</u>
100 <u>Personnel Services – Salaries</u>				
100 Personnel Services – Salaries				43,725.00
Total Personnel Services – Salaries				\$43,725.00
200 <u>Personnel Services – Employee Benefits</u>				
210 Group Insurance – Contracted Provider				12,564.81
220 Social Security Contributions				3,348.85
230 PSERS Retirement Contributions				15,173.87
250 Unemployment Compensation				31.01
260 Workers' Compensation				192.49
299 All Other Employee Benefits				1,200.00
Total Personnel Services – Employee Benefits				\$32,511.03
500 <u>Other Purchased Services</u>				
530 Communications				150.00
Total Other Purchased Services				\$150.00
800 <u>Other Objects</u>				
810 Dues and Fees				125.00
Total Other Objects				\$125.00
Total 2711 Supervision of Student Transportation Services – Head of Component				\$76,511.03



LEA : 116605003     Mifflinburg Area SD

Printed 10/29/2024 3:10:22 PM

General Fund (10)

2720 Vehicle Operation Services

Elementary                      Secondary                      Federal                      Total

100 <u>Personnel Services – Salaries</u>				
100 Personnel Services – Salaries				22,148.32
<b>Total Personnel Services – Salaries</b>				<b>\$22,148.32</b>
200 <u>Personnel Services – Employee Benefits</u>				
210 Group Insurance – Contracted Provider				14,974.50
220 Social Security Contributions				1,678.47
230 PSERS Retirement Contributions				7,965.12
250 Unemployment Compensation				30.41
260 Workers' Compensation				97.50
<b>Total Personnel Services – Employee Benefits</b>				<b>\$24,746.00</b>
400 <u>Purchased Property Services</u>				
420 Utility Services				2,172.08
<b>Total Purchased Property Services</b>				<b>\$2,172.08</b>
500 <u>Other Purchased Services</u>				
513 Contracted Carriers			12,540.00	1,558,961.86
516 Student Transportation Services From the IU				50,941.80
<b>Total Other Purchased Services</b>			<b>\$12,540.00</b>	<b>\$1,609,903.66</b>
600 <u>Supplies</u>				
610 General Supplies				6,643.89
620 Energy				5,608.38
650 Supplies & Fees – Technology Related				6,100.00
<b>Total Supplies</b>				<b>\$18,352.27</b>
<b>Total 2720 Vehicle Operation Services</b>			<b>\$12,540.00</b>	<b>\$1,677,322.33</b>

LEA : 116605003     Mifflinburg Area SD

Printed 10/29/2024 3:10:22 PM

General Fund (10)

2730 Monitoring Services

Elementary                      Secondary                      Federal                      Total

100 <u>Personnel Services – Salaries</u>				
100 Personnel Services – Salaries				45,665.09
<b>Total Personnel Services – Salaries</b>				<b>\$45,665.09</b>
200 <u>Personnel Services – Employee Benefits</u>				
220 Social Security Contributions				3,464.69
230 PSERS Retirement Contributions				15,960.94
250 Unemployment Compensation				137.72
260 Workers' Compensation				200.92
<b>Total Personnel Services – Employee Benefits</b>				<b>\$19,764.27</b>
<b>Total 2730 Monitoring Services</b>				<b>\$65,429.36</b>

LEA : 116605003     Mifflinburg Area SD

Printed 10/29/2024 3:10:22 PM

General Fund (10)

2750 Nonpublic Transportation	<u>Elementary</u>	<u>Secondary</u>	<u>Federal</u>	<u>Total</u>
500 <u>Other Purchased Services</u>				
513 Contracted Carriers				120,555.16
Total Other Purchased Services				\$120,555.16
Total 2750 Nonpublic Transportation				\$120,555.16

LEA : 116605003     Mifflinburg Area SD

Printed 10/29/2024 3:10:22 PM

General Fund (10)

2800 Support Services – Central				
	Elementary	Secondary	Federal	Total
100 <u>Personnel Services – Salaries</u>				
100 Personnel Services – Salaries				181,897.91
Total Personnel Services – Salaries				\$181,897.91
200 <u>Personnel Services – Employee Benefits</u>				
210 Group Insurance – Contracted Provider				40,175.08
220 Social Security Contributions				14,062.24
230 PSERS Retirement Contributions				62,375.02
240 Tuition Reimbursement				8,580.00
250 Unemployment Compensation				234.24
260 Workers' Compensation				800.26
299 All Other Employee Benefits				1,310.00
Total Personnel Services – Employee Benefits				\$127,536.84
300 <u>Purchased Professional and Technical Services</u>				
340 Technical Services				98,330.83
360 Employee Training and Development Services			(227.78)	11,347.15
390 Other Purchased Professional and Technical Services				7,106.35
Total Purchased Professional and Technical Services			(\$227.78)	\$116,784.33
400 <u>Purchased Property Services</u>				
430 Repairs and Maintenance Services				4,877.95
440 Rentals				90,106.68
Total Purchased Property Services				\$94,984.63
500 <u>Other Purchased Services</u>				
530 Communications				44,505.71
580 Travel				4,753.71
Total Other Purchased Services				\$49,259.42
600 <u>Supplies</u>				
610 General Supplies				290,121.29
650 Supplies & Fees – Technology Related				188,041.37
Total Supplies				\$478,162.66
800 <u>Other Objects</u>				
810 Dues and Fees				400.00
Total Other Objects				\$400.00
Total 2800 Support Services – Central			(\$227.78)	\$1,049,025.79

LEA : 116605003     Mifflinburg Area SD

Printed 10/29/2024 3:10:22 PM

General Fund (10)

2820 Information Services

Elementary                      Secondary                      Federal                      Total

100 <u>Personnel Services – Salaries</u>				
100 Personnel Services – Salaries				181,897.91
<b>Total Personnel Services – Salaries</b>				<b>\$181,897.91</b>
200 <u>Personnel Services – Employee Benefits</u>				
210 Group Insurance – Contracted Provider				40,175.08
220 Social Security Contributions				13,734.06
230 PSERS Retirement Contributions				62,375.02
250 Unemployment Compensation				234.24
260 Workers' Compensation				800.26
299 All Other Employee Benefits				1,310.00
<b>Total Personnel Services – Employee Benefits</b>				<b>\$118,628.66</b>
300 <u>Purchased Professional and Technical Services</u>				
340 Technical Services				98,330.83
<b>Total Purchased Professional and Technical Services</b>				<b>\$98,330.83</b>
400 <u>Purchased Property Services</u>				
430 Repairs and Maintenance Services				4,828.95
440 Rentals				90,106.68
<b>Total Purchased Property Services</b>				<b>\$94,935.63</b>
500 <u>Other Purchased Services</u>				
530 Communications				40,251.61
580 Travel				1,466.25
<b>Total Other Purchased Services</b>				<b>\$41,717.86</b>
600 <u>Supplies</u>				
610 General Supplies				287,511.29
650 Supplies & Fees – Technology Related				180,506.81
<b>Total Supplies</b>				<b>\$468,018.10</b>
<b>Total 2820 Information Services</b>				<b>\$1,003,528.99</b>

LEA : 116605003     Mifflinburg Area SD

Printed 10/29/2024 3:10:22 PM

General Fund (10)

2821 Supervision of Information Services	<u>Elementary</u>	<u>Secondary</u>	<u>Federal</u>	<u>Total</u>
100 <u>Personnel Services – Salaries</u>				
100 Personnel Services – Salaries				93,820.00
Total Personnel Services – Salaries				\$93,820.00
200 <u>Personnel Services – Employee Benefits</u>				
210 Group Insurance – Contracted Provider				29,431.08
220 Social Security Contributions				7,026.76
230 PSERS Retirement Contributions				31,993.55
250 Unemployment Compensation				61.99
260 Workers' Compensation				412.86
299 All Other Employee Benefits				1,310.00
Total Personnel Services – Employee Benefits				\$70,236.24
500 <u>Other Purchased Services</u>				
530 Communications				550.00
580 Travel				840.60
Total Other Purchased Services				\$1,390.60
600 <u>Supplies</u>				
610 General Supplies				49.77
Total Supplies				\$49.77
Total 2821 Supervision of Information Services				\$165,496.61

LEA : 116605003     Mifflinburg Area SD

Printed 10/29/2024 3:10:22 PM

General Fund (10)

2822 Internal Information Services	<u>Elementary</u>	<u>Secondary</u>	<u>Federal</u>	<u>Total</u>
100 <u>Personnel Services – Salaries</u>				
100 Personnel Services – Salaries				88,077.91
Total Personnel Services – Salaries				\$88,077.91
200 <u>Personnel Services – Employee Benefits</u>				
210 Group Insurance – Contracted Provider				10,744.00
220 Social Security Contributions				6,707.30
230 PSERS Retirement Contributions				30,381.47
250 Unemployment Compensation				172.25
260 Workers' Compensation				387.40
Total Personnel Services – Employee Benefits				\$48,392.42
300 <u>Purchased Professional and Technical Services</u>				
340 Technical Services				98,330.83
Total Purchased Professional and Technical Services				\$98,330.83
400 <u>Purchased Property Services</u>				
430 Repairs and Maintenance Services				4,828.95
440 Rentals				90,106.68
Total Purchased Property Services				\$94,935.63
500 <u>Other Purchased Services</u>				
530 Communications				39,701.61
580 Travel				625.65
Total Other Purchased Services				\$40,327.26
600 <u>Supplies</u>				
610 General Supplies				287,461.52
650 Supplies & Fees – Technology Related				180,506.81
Total Supplies				\$467,968.33
Total 2822 Internal Information Services				\$838,032.38

LEA : 116605003     Mifflinburg Area SD

Printed 10/29/2024 3:10:22 PM

General Fund (10)

2830 Staff Services	<u>Elementary</u>	<u>Secondary</u>	<u>Federal</u>	<u>Total</u>
200 <u>Personnel Services – Employee Benefits</u>				
220 Social Security Contributions				328.18
240 Tuition Reimbursement				8,580.00
Total Personnel Services – Employee Benefits				\$8,908.18
300 <u>Purchased Professional and Technical Services</u>				
360 Employee Training and Development Services			(227.78)	11,347.15
Total Purchased Professional and Technical Services			(\$227.78)	\$11,347.15
400 <u>Purchased Property Services</u>				
430 Repairs and Maintenance Services				49.00
Total Purchased Property Services				\$49.00
500 <u>Other Purchased Services</u>				
580 Travel				3,287.46
Total Other Purchased Services				\$3,287.46
600 <u>Supplies</u>				
610 General Supplies				2,610.00
Total Supplies				\$2,610.00
800 <u>Other Objects</u>				
810 Dues and Fees				400.00
Total Other Objects				\$400.00
Total 2830 Staff Services			(\$227.78)	\$26,601.79



LEA : 116605003     Mifflinburg Area SD

Printed 10/29/2024 3:10:22 PM

General Fund (10)

2832 Recruitment and Placement Services	<u>Elementary</u>	<u>Secondary</u>	<u>Federal</u>	<u>Total</u>
800 <u>Other Objects</u>				
810 Dues and Fees				400.00
Total Other Objects				\$400.00
Total 2832 Recruitment and Placement Services				\$400.00

LEA : 116605003     Mifflinburg Area SD

Printed 10/29/2024 3:10:22 PM

General Fund (10)

2834 Staff Development Services – Non-Instructional, Certified Staff Only	<u>Elementary</u>	<u>Secondary</u>	<u>Federal</u>	<u>Total</u>
200 <u>Personnel Services – Employee Benefits</u>				
220 Social Security Contributions				328.18
240 Tuition Reimbursement				8,580.00
Total Personnel Services – Employee Benefits				\$8,908.18
300 <u>Purchased Professional and Technical Services</u>				
360 Employee Training and Development Services			(227.78)	7,697.35
Total Purchased Professional and Technical Services			(\$227.78)	\$7,697.35
500 <u>Other Purchased Services</u>				
580 Travel				1,852.68
Total Other Purchased Services				\$1,852.68
Total 2834 Staff Development Services – Non-Instructional, Certified Staff Only			(\$227.78)	\$18,458.21

LEA : 116605003     Mifflinburg Area SD

Printed 10/29/2024 3:10:22 PM

General Fund (10)

2836 Staff Development Services – Non-Instructional, Non-Certified Staff Only	<u>Elementary</u>	<u>Secondary</u>	<u>Federal</u>	<u>Total</u>
300 <u>Purchased Professional and Technical Services</u>				
360 Employee Training and Development Services				3,649.80
Total Purchased Professional and Technical Services				\$3,649.80
500 <u>Other Purchased Services</u>				
580 Travel				1,434.78
Total Other Purchased Services				\$1,434.78
Total 2836 Staff Development Services – Non-Instructional, Non-Certified Staff Only				\$5,084.58

LEA : 116605003     Mifflinburg Area SD

Printed 10/29/2024 3:10:22 PM

General Fund (10)

2839 Other Staff Services	<u>Elementary</u>	<u>Secondary</u>	<u>Federal</u>	<u>Total</u>
400 <u>Purchased Property Services</u>				
430 Repairs and Maintenance Services				49.00
Total Purchased Property Services				\$49.00
600 <u>Supplies</u>				
610 General Supplies				2,610.00
Total Supplies				\$2,610.00
Total 2839 Other Staff Services				\$2,659.00

LEA : 116605003     Mifflinburg Area SD

Printed 10/29/2024 3:10:22 PM

General Fund (10)

2860 Management Services	<u>Elementary</u>	<u>Secondary</u>	<u>Federal</u>	<u>Total</u>
300 <u>Purchased Professional and Technical Services</u>				
390 Other Purchased Professional and Technical Services				7,106.35
Total Purchased Professional and Technical Services				\$7,106.35
500 <u>Other Purchased Services</u>				
530 Communications				4,254.10
Total Other Purchased Services				\$4,254.10
600 <u>Supplies</u>				
650 Supplies & Fees – Technology Related				7,534.56
Total Supplies				\$7,534.56
Total 2860 Management Services				\$18,895.01

LEA : 116605003     Mifflinburg Area SD

Printed 10/29/2024 3:10:31 PM

General Fund (10)

3000 Operation of Non-Instructional Services		<u>Total</u>
<b>100 <u>Personnel Services – Salaries</u></b>		
100 Personnel Services – Salaries		362,850.11
<b>Total Personnel Services – Salaries</b>		<b>\$362,850.11</b>
<b>200 <u>Personnel Services – Employee Benefits</u></b>		
210 Group Insurance – Contracted Provider		27,539.31
220 Social Security Contributions		27,792.21
230 PSERS Retirement Contributions		122,471.37
250 Unemployment Compensation		1,035.80
260 Workers' Compensation		1,601.22
<b>Total Personnel Services – Employee Benefits</b>		<b>\$180,439.91</b>
<b>300 <u>Purchased Professional and Technical Services</u></b>		
330 Other Professional Services		40,250.00
390 Other Purchased Professional and Technical Services		37,143.55
<b>Total Purchased Professional and Technical Services</b>		<b>\$77,393.55</b>
<b>400 <u>Purchased Property Services</u></b>		
430 Repairs and Maintenance Services		9,103.67
440 Rentals		4,564.06
<b>Total Purchased Property Services</b>		<b>\$13,667.73</b>
<b>500 <u>Other Purchased Services</u></b>		
510 Student Transportation Services		43,636.86
520 Insurance – General		15,495.00
530 Communications		350.00
550 Printing and Binding		1,788.30
580 Travel		8,819.42
<b>Total Other Purchased Services</b>		<b>\$70,089.58</b>
<b>600 <u>Supplies</u></b>		
610 General Supplies		107,497.50
650 Supplies & Fees – Technology Related		9,512.00
<b>Total Supplies</b>		<b>\$117,009.50</b>
<b>800 <u>Other Objects</u></b>		
810 Dues and Fees		11,581.20
<b>Total Other Objects</b>		<b>\$11,581.20</b>
<b>Total 3000 Operation of Non-Instructional Services</b>		<b>\$833,031.58</b>

LEA : 116605003     Mifflinburg Area SD

Printed 10/29/2024 3:10:31 PM

General Fund (10)

3200 Student Activities

	<u>Elementary</u>	<u>Secondary</u>	<u>Federal</u>	<u>Total</u>
<b>100 <u>Personnel Services – Salaries</u></b>				
100 Personnel Services – Salaries				362,850.11
<b>Total Personnel Services – Salaries</b>				<b>\$362,850.11</b>
<b>200 <u>Personnel Services – Employee Benefits</u></b>				
210 Group Insurance – Contracted Provider				27,539.31
220 Social Security Contributions				27,792.21
230 PSERS Retirement Contributions				122,471.37
250 Unemployment Compensation				1,035.80
260 Workers' Compensation				1,601.22
<b>Total Personnel Services – Employee Benefits</b>				<b>\$180,439.91</b>
<b>300 <u>Purchased Professional and Technical Services</u></b>				
330 Other Professional Services				40,250.00
390 Other Purchased Professional and Technical Services				37,143.55
<b>Total Purchased Professional and Technical Services</b>				<b>\$77,393.55</b>
<b>400 <u>Purchased Property Services</u></b>				
430 Repairs and Maintenance Services				9,103.67
440 Rentals				4,564.06
<b>Total Purchased Property Services</b>				<b>\$13,667.73</b>
<b>500 <u>Other Purchased Services</u></b>				
510 Student Transportation Services				43,636.86
520 Insurance – General				15,495.00
530 Communications				350.00
550 Printing and Binding				1,788.30
580 Travel				8,819.42
<b>Total Other Purchased Services</b>				<b>\$70,089.58</b>
<b>600 <u>Supplies</u></b>				
610 General Supplies				101,553.97
650 Supplies & Fees – Technology Related				9,512.00
<b>Total Supplies</b>				<b>\$111,065.97</b>
<b>800 <u>Other Objects</u></b>				
810 Dues and Fees				11,581.20
<b>Total Other Objects</b>				<b>\$11,581.20</b>
<b>Total 3200 Student Activities</b>				<b>\$827,088.05</b>

LEA : 116605003     Mifflinburg Area SD

Printed 10/29/2024 3:10:31 PM

General Fund (10)

3300 Community Services

<u>Elementary</u>	<u>Secondary</u>	<u>Federal</u>	<u>Total</u>
-------------------	------------------	----------------	--------------

600 Supplies

610 General Supplies

		5,943.53	5,943.53
--	--	----------	----------

Total Supplies			\$5,943.53	\$5,943.53
Total 3300 Community Services			\$5,943.53	\$5,943.53



LEA : 116605003     Mifflinburg Area SD

Printed 10/29/2024 3:10:40 PM

General Fund (10)

4000 Facilities Acquisition, Construction and Improvement Services		<u>Total</u>
400 <u>Purchased Property Services</u>		
450 Construction Services		72,771.00
Total Purchased Property Services		\$72,771.00
700 <u>Property</u>		
752 Capital Equipment – Original and Additional		34,130.46
762 Capitalized Equipment - Replacement		30,000.00
Total Property		\$64,130.46
Total 4000 Facilities Acquisition, Construction and Improvement Services		\$136,901.46

LEA : 116605003     Mifflinburg Area SD

Printed 10/29/2024 3:10:40 PM

General Fund (10)

4600 Existing Building Improvement Services	<u>Elementary</u>	<u>Secondary</u>	<u>Federal</u>	<u>Total</u>
400 <u>Purchased Property Services</u>				
450 Construction Services				72,771.00
Total Purchased Property Services				\$72,771.00
700 <u>Property</u>				
752 Capital Equipment – Original and Additional				34,130.46
762 Capitalized Equipment - Replacement				30,000.00
Total Property				\$64,130.46
Total 4600 Existing Building Improvement Services				\$136,901.46

LEA : 116605003     Mifflinburg Area SD

Printed 10/29/2024 3:10:47 PM

General Fund (10)

5000 Other Expenditures and Financing Uses

Total

800 <u>Other Objects</u>	
830 Interest	1,067,363.19
Total Other Objects	\$1,067,363.19
900 <u>Other Uses of Funds</u>	
910 Redemption of Principal	1,335,000.00
932 Capital Reserve Fund Transfers Applicable To Fund 32	1,450,000.00
939 Other Fund Transfers	100,000.00
Total Other Uses of Funds	\$2,885,000.00
Total 5000 Other Expenditures and Financing Uses	\$3,952,363.19

LEA : 116605003     Mifflinburg Area SD

Printed 10/29/2024 3:10:47 PM

General Fund (10)

5100 Debt Service / Other Expenditures and Financing Uses	<u>Elementary</u>	<u>Secondary</u>	<u>Federal</u>	<u>Total</u>
800 <u>Other Objects</u>				
830 Interest				1,067,363.19
Total Other Objects				\$1,067,363.19
900 <u>Other Uses of Funds</u>				
910 Redemption of Principal				1,335,000.00
Total Other Uses of Funds				\$1,335,000.00
Total 5100 Debt Service / Other Expenditures and Financing Uses				\$2,402,363.19

LEA : 116605003     Mifflinburg Area SD

Printed 10/29/2024 3:10:47 PM

General Fund (10)

5110 Debt Service	<u>Elementary</u>	<u>Secondary</u>	<u>Federal</u>	<u>Total</u>
800 <u>Other Objects</u>				
830 Interest				1,067,363.19
Total Other Objects				\$1,067,363.19
900 <u>Other Uses of Funds</u>				
910 Redemption of Principal				1,335,000.00
Total Other Uses of Funds				\$1,335,000.00
Total 5110 Debt Service				\$2,402,363.19

<u>Elementary</u>	<u>Secondary</u>	<u>Federal</u>	<u>Total</u>
-------------------	------------------	----------------	--------------

<u>Elementary</u>	<u>Secondary</u>	<u>Federal</u>	<u>Total</u>
-------------------	------------------	----------------	--------------

[illegible]

<u>Elementary</u>	<u>Secondary</u>	<u>Federal</u>	<u>Total</u>
-------------------	------------------	----------------	--------------

<u>Elementary</u>	<u>Secondary</u>	<u>Federal</u>	<u>Total</u>
-------------------	------------------	----------------	--------------

<u>Elementary</u>	<u>Secondary</u>	<u>Federal</u>	<u>Total</u>
-------------------	------------------	----------------	--------------

<u>Elementary</u>	<u>Secondary</u>	<u>Federal</u>	<u>Total</u>
-------------------	------------------	----------------	--------------

LEA : 116605003     Mifflinburg Area SD

Printed 10/29/2024 3:10:47 PM

General Fund (10)

5230 Capital Projects Fund Transfers	<u>Elementary</u>	<u>Secondary</u>	<u>Federal</u>	<u>Total</u>
900 <u>Other Uses of Funds</u>				
932 Capital Reserve Fund Transfers Applicable To Fund 32				1,450,000.00
Total Other Uses of Funds				\$1,450,000.00
Total 5230 Capital Projects Fund Transfers				\$1,450,000.00

LEA : 116605003     Mifflinburg Area SD

Printed 10/29/2024 3:10:47 PM

General Fund (10)

5250 Enterprise Fund Transfers	<u>Elementary</u>	<u>Secondary</u>	<u>Federal</u>	<u>Total</u>
900 <u>Other Uses of Funds</u>				
939 Other Fund Transfers				100,000.00
Total Other Uses of Funds				\$100,000.00
Total 5250 Enterprise Fund Transfers				\$100,000.00



LEA : 116605003     Mifflinburg Area SD

Printed 10/29/2024 3:10:34 PM

Student Sponsored Activity Fund (21)

<b>3000 Operation of Non-Instructional Services</b>		<b><u>Total</u></b>
<b>300 <u>Purchased Professional and Technical Services</u></b>		
390 Other Purchased Professional and Technical Services	100.00	
<b>Total Purchased Professional and Technical Services</b>		<b>\$100.00</b>
<b>400 <u>Purchased Property Services</u></b>		
440 Rentals	4,805.00	
<b>Total Purchased Property Services</b>		<b>\$4,805.00</b>
<b>500 <u>Other Purchased Services</u></b>		
580 Travel	5,842.52	
591 Services Purchased Locally	2,996.25	
<b>Total Other Purchased Services</b>		<b>\$8,838.77</b>
<b>600 <u>Supplies</u></b>		
610 General Supplies	160,182.83	
<b>Total Supplies</b>		<b>\$160,182.83</b>
<b>800 <u>Other Objects</u></b>		
810 Dues and Fees	3,081.00	
870 Donated Services	150.00	
<b>Total Other Objects</b>		<b>\$3,231.00</b>
<b>Total 3000 Operation of Non-Instructional Services</b>		<b>\$177,157.60</b>

LEA : 116605003      Mifflinburg Area SD

Printed 10/29/2024 3:10:34 PM

Student Sponsored Activity Fund (21)

3200 Student Activities	<u>Elementary</u>	<u>Secondary</u>	<u>Federal</u>	<u>Total</u>
300 <u>Purchased Professional and Technical Services</u>				
390 Other Purchased Professional and Technical Services				100.00
Total Purchased Professional and Technical Services				\$100.00
400 <u>Purchased Property Services</u>				
440 Rentals				4,805.00
Total Purchased Property Services				\$4,805.00
500 <u>Other Purchased Services</u>				
580 Travel				5,842.52
591 Services Purchased Locally				2,996.25
Total Other Purchased Services				\$8,838.77
600 <u>Supplies</u>				
610 General Supplies				160,182.83
Total Supplies				\$160,182.83
800 <u>Other Objects</u>				
810 Dues and Fees				3,081.00
870 Donated Services				150.00
Total Other Objects				\$3,231.00
Total 3200 Student Activities				\$177,157.60

LEA : 116605003     Mifflinburg Area SD

Printed 10/29/2024 3:10:51 PM

Student Sponsored Activity Fund (21)

5000 Other Expenditures and Financing Uses

Total

900 Other Uses of Funds

939 Other Fund Transfers

11,920.64

Total Other Uses of Funds

\$11,920.64

Total 5000 Other Expenditures and Financing Uses

\$11,920.64

LEA : 116605003     Mifflinburg Area SD

Printed 10/29/2024 3:10:51 PM

Student Sponsored Activity Fund (21)

5200 Interfund Transfers – Out	<u>Elementary</u>	<u>Secondary</u>	<u>Federal</u>	<u>Total</u>
900 <u>Other Uses of Funds</u>				
939 Other Fund Transfers				11,920.64
Total Other Uses of Funds				\$11,920.64
Total 5200 Interfund Transfers – Out				\$11,920.64

LEA : 116605003     Mifflinburg Area SD

Printed 10/29/2024 3:10:51 PM

Student Sponsored Activity Fund (21)

5210 General Fund Transfers	<u>Elementary</u>	<u>Secondary</u>	<u>Federal</u>	<u>Total</u>
900 <u>Other Uses of Funds</u>				
939 Other Fund Transfers				11,920.64
Total Other Uses of Funds				\$11,920.64
Total 5210 General Fund Transfers				\$11,920.64

LEA : 116605003      Mifflinburg Area SD

Printed 10/29/2024 3:10:27 PM

Public Purpose (Expendable) Trust Fund (27)

2000 Support Services	<u>Total</u>
800 <u>Other Objects</u>	
810 Dues and Fees	140.00
Total Other Objects	\$140.00
Total 2000 Support Services	\$140.00

LEA : 116605003     Mifflinburg Area SD

Printed 10/29/2024 3:10:27 PM

Public Purpose (Expendable) Trust Fund (27)

2500 Support Services – Business	<u>Elementary</u>	<u>Secondary</u>	<u>Federal</u>	<u>Total</u>
800 <u>Other Objects</u>				
810 Dues and Fees				140.00
Total Other Objects				\$140.00
Total 2500 Support Services – Business				\$140.00

LEA : 116605003     Mifflinburg Area SD

Printed 10/29/2024 3:10:27 PM

Public Purpose (Expendable) Trust Fund (27)

2510 Fiscal Services	<u>Elementary</u>	<u>Secondary</u>	<u>Federal</u>	<u>Total</u>
800 <u>Other Objects</u>				
810 Dues and Fees				140.00
Total Other Objects				\$140.00
Total 2510 Fiscal Services				\$140.00



LEA : 116605003     Mifflinburg Area SD

Printed 10/29/2024 3:10:27 PM

Public Purpose (Expendable) Trust Fund (27)

2519 Other Fiscal Services	<u>Elementary</u>	<u>Secondary</u>	<u>Federal</u>	<u>Total</u>
800 <u>Other Objects</u>				
810 Dues and Fees				140.00
Total Other Objects				\$140.00
Total 2519 Other Fiscal Services				\$140.00

LEA : 116605003      Mifflinburg Area SD

Printed 10/29/2024 3:10:37 PM

Public Purpose (Expendable) Trust Fund (27)

3000 Operation of Non-Instructional Services

Total

800 Other Objects

890 Miscellaneous Expenditures

41,662.99

Total Other Objects

\$41,662.99

Total 3000 Operation of Non-Instructional Services

\$41,662.99

LEA : 116605003      Mifflinburg Area SD

Printed 10/29/2024 3:10:37 PM

Public Purpose (Expendable) Trust Fund (27)

3400 Scholarships and Awards

Elementary                      Secondary                      Federal                      Total

800 <u>Other Objects</u>				
890 Miscellaneous Expenditures				41,662.99
Total Other Objects				\$41,662.99
Total 3400 Scholarships and Awards				\$41,662.99

LEA : 116605003      Mifflinburg Area SD

Printed 10/29/2024 3:10:43 PM

Capital Reserve Fund - § 1431 (32)

4000 Facilities Acquisition, Construction and Improvement Services

Total

400	<u>Purchased Property Services</u>	
450	Construction Services	171,388.63
Total Purchased Property Services		\$171,388.63
700	<u>Property</u>	
762	Capitalized Equipment - Replacement	16,004.00
Total Property		\$16,004.00
Total 4000 Facilities Acquisition, Construction and Improvement Services		\$187,392.63

LEA : 116605003     Mifflinburg Area SD

Printed 10/29/2024 3:10:43 PM

Capital Reserve Fund - § 1431 (32)

4600 Existing Building Improvement Services	<u>Elementary</u>	<u>Secondary</u>	<u>Federal</u>	<u>Total</u>
400 <u>Purchased Property Services</u>				
450 Construction Services				171,388.63
Total Purchased Property Services				\$171,388.63
700 <u>Property</u>				
762 Capitalized Equipment - Replacement				16,004.00
Total Property				\$16,004.00
Total 4600 Existing Building Improvement Services				\$187,392.63

LEA : 116605003     Mifflinburg Area SD

Printed 10/29/2024 3:10:55 PM

	<u>General Fund(10)</u>	<u>Student Sponsored Activity Fund(21)</u>	<u>Public Purpose Trust(27)</u>	<u>Other Compt Approved (28)</u>	<u>Athletic / Activity(29)</u>
<b>1000 <u>Instruction</u></b>					
1100 Regular Programs - Elementary / Secondary	15,222,381.98				
1200 Special Programs - Elementary / Secondary	4,955,992.85				
1300 Vocational Education	1,600,319.20				
1400 Other Instructional Programs - Elementary / Secondary	96,393.26				
1600 Adult Education Programs	827.34				
<b>Total Instruction</b>	<b>\$21,875,914.63</b>				
<b>2000 <u>Support Services</u></b>					
2100 Support Services - Students	1,294,233.80				
2200 Support Services - Instructional Staff	1,086,039.79				
2300 Support Services - Administration	2,076,471.83				
2400 Support Services - Pupil Health	344,292.25				
2500 Support Services - Business	504,623.74			140.00	
2600 Operation and Maintenance of Plant Services	3,175,704.62				
2700 Student Transportation Services	1,939,817.88				
2800 Support Services - Central	1,049,025.79				
<b>Total Support Services</b>	<b>\$11,470,209.70</b>			<b>\$140.00</b>	
<b>3000 <u>Operation of Non-Instructional Services</u></b>					
3200 Student Activities	827,088.05	177,157.60			
3300 Community Services	5,943.53				
3400 Scholarships and Awards				41,662.99	
<b>Total Operation of Non-Instructional Services</b>	<b>\$833,031.58</b>	<b>\$177,157.60</b>		<b>\$41,662.99</b>	
<b>4000 <u>Facilities Acquisition, Construction and Improvement Services</u></b>					
4600 Existing Building Improvement Services	136,901.46				
<b>Total Facilities Acquisition, Construction and Improvement Services</b>	<b>\$136,901.46</b>				
<b>5000 <u>Other Expenditures and Financing Uses</u></b>					
5100 Debt Service / Other Expenditures and Financing Uses	2,402,363.19				
5200 Interfund Transfers - Out	1,550,000.00	11,920.64			
<b>Total Other Expenditures and Financing Uses</b>	<b>\$3,952,363.19</b>	<b>\$11,920.64</b>			
<b>TOTAL ACTUAL EXPENDITURES &amp; OTHER FINANCING USES</b>	<b>\$38,268,420.56</b>	<b>\$189,078.24</b>		<b>\$41,802.99</b>	

LEA : 116605003     Mifflinburg Area SD

Printed 10/29/2024 3:10:55 PM

	<u>Capital Reserve (690.1850)(31)</u>	<u>Capital Reserve (1431)(32)</u>	<u>Other Capital Projects Fund(39)</u>	<u>Debt Service(40)</u>	<u>Permanent(90)</u>
<b>1000 <u>Instruction</u></b>					
1100 Regular Programs - Elementary / Secondary					
1200 Special Programs - Elementary / Secondary					
1300 Vocational Education					
1400 Other Instructional Programs - Elementary / Secondary					
1600 Adult Education Programs					
<b>Total Instruction</b>					
<b>2000 <u>Support Services</u></b>					
2100 Support Services - Students					
2200 Support Services - Instructional Staff					
2300 Support Services - Administration					
2400 Support Services - Pupil Health					
2500 Support Services - Business					
2600 Operation and Maintenance of Plant Services					
2700 Student Transportation Services					
2800 Support Services - Central					
<b>Total Support Services</b>					
<b>3000 <u>Operation of Non-Instructional Services</u></b>					
3200 Student Activities					
3300 Community Services					
3400 Scholarships and Awards					
<b>Total Operation of Non-Instructional Services</b>					
<b>4000 <u>Facilities Acquisition, Construction and Improvement Services</u></b>					
4600 Existing Building Improvement Services			187,392.63		
<b>Total Facilities Acquisition, Construction and Improvement Services</b>			<b>\$187,392.63</b>		
<b>5000 <u>Other Expenditures and Financing Uses</u></b>					
5100 Debt Service / Other Expenditures and Financing Uses					
5200 Interfund Transfers - Out					
<b>Total Other Expenditures and Financing Uses</b>					
<b>TOTAL ACTUAL EXPENDITURES &amp; OTHER FINANCING USES</b>			<b>\$187,392.63</b>		

LEA : 116605003     Mifflinburg Area SD

Printed 10/29/2024 3:10:55 PM

	<u>Total</u>
<b>1000 <u>Instruction</u></b>	
1100 Regular Programs - Elementary / Secondary	15,222,381.98
1200 Special Programs - Elementary / Secondary	4,955,992.85
1300 Vocational Education	1,600,319.20
1400 Other Instructional Programs - Elementary / Secondary	96,393.26
1600 Adult Education Programs	827.34
<b>Total Instruction</b>	<b>\$21,875,914.63</b>
<b>2000 <u>Support Services</u></b>	
2100 Support Services - Students	1,294,233.80
2200 Support Services - Instructional Staff	1,086,039.79
2300 Support Services - Administration	2,076,471.83
2400 Support Services - Pupil Health	344,292.25
2500 Support Services - Business	504,763.74
2600 Operation and Maintenance of Plant Services	3,175,704.62
2700 Student Transportation Services	1,939,817.88
2800 Support Services - Central	1,049,025.79
<b>Total Support Services</b>	<b>\$11,470,349.70</b>
<b>3000 <u>Operation of Non-Instructional Services</u></b>	
3200 Student Activities	1,004,245.65
3300 Community Services	5,943.53
3400 Scholarships and Awards	41,662.99
<b>Total Operation of Non-Instructional Services</b>	<b>\$1,051,852.17</b>
<b>4000 <u>Facilities Acquisition, Construction and Improvement Services</u></b>	
4600 Existing Building Improvement Services	324,294.09
<b>Total Facilities Acquisition, Construction and Improvement Services</b>	<b>\$324,294.09</b>
<b>5000 <u>Other Expenditures and Financing Uses</u></b>	
5100 Debt Service / Other Expenditures and Financing Uses	2,402,363.19
5200 Interfund Transfers - Out	1,561,920.64
<b>Total Other Expenditures and Financing Uses</b>	<b>\$3,964,283.83</b>
<b>TOTAL ACTUAL EXPENDITURES &amp; OTHER FINANCING USES</b>	<b>\$38,686,694.42</b>



LEA : 116605003     Mifflinburg Area SD

Printed 10/29/2024 3:11:08 PM

PSERS Salary Data (Salary Data should relate to the General Fund only)

Amount	Description	Amount
	Total Salary Base for salaries subject to PSERS withholding	14,578,883.53
	Total Federally Funded salaries subject to PSERS withholding	658,206.14

Title I Expenditure Data

Amount	Description	Amount
	Expenditures Funded with Current Title I Funds	508,471.00
Total	Title I Expenditure Data	\$508,471.00

Title IV Revenue Data

Amount	Description	Amount
	Revenue from Title IV-A-1: Student Support and Academic Enrichment Grants	40,134.00

LEA : 116605003     Mifflinburg Area SD

1 .	<u>Current Special Education Expenditures within Function 1000</u> See list of exclusions in the note below.	3,917,640.77
2 .	<u>Current Special Education Expenditures within Function 2000</u> See list of exclusions in the note below.	1,955,274.80
2A.	<u>Current Special Education Expenditures within Sub-Function 2100</u> This data should also be included in line 2 above. See list of exclusions in the note below.	214,471.10
2B.	<u>Current Special Education Expenditures within Sub-Function 2200</u> This data should also be included in line 2 above. See list of exclusions in the note below.	188,970.92
2C.	<u>Current Special Education Expenditures within Sub-Function 2700</u> This data should also be included in line 2 above. See list of exclusions in the note below.	307,687.84
3.	<u>Current Special Education Expenditures within Sub-Function 3100</u> See list of exclusions in the note below.	252,217.93
4.	<u>Current Special Education Expenditures within Sub-Function 3200</u> See list of exclusions in the note below.	174,738.74

**Note:** The Current Special Education Expenditure amounts for each line should be calculated as follows:

- \* Include the total expenditures for special education costs from all governmental funds and the food service fund 51 for the function/sub-function requested
- \* Exclude data from sub-functions: 1243,1450,1500,1600,1807,2280,2450,2750,2990
- \* Exclude data from objects: 322,511,512,516,561,562,564,566,592,593,594,595,596,597,700,830,899

Benefits for Staff Relative to Collective Bargaining Agreements

	OBJECT	COVERED	NOT COVERED	TOTAL
10 General Fund	No Self Insurance data to report			
	211 Medical Insurance	3,810,308.10	69,391.02	3,879,699.12
	212 Dental Insurance	90,646.28		90,646.28
	215 Eye Care Insurance			
	216 Prescription Insurance			
	271 Self-Insurance Medical Benefits			
	272 Self-Insurance Dental Benefits			
	275 Self-Insurance Eye Care Benefits			
	276 Self-Insurance Prescription Benefits			
	FUND TOTAL	\$3,900,954.38	\$69,391.02	\$3,970,345.40
50 Enterprise Fund	No Self Insurance data to report			
	211 Medical Insurance	34,535.00	420.00	34,955.00
	212 Dental Insurance	738.00		738.00
	215 Eye Care Insurance			
	216 Prescription Insurance			
	271 Self-Insurance Medical Benefits			
	272 Self-Insurance Dental Benefits			
	275 Self-Insurance Eye Care Benefits			
	276 Self-Insurance Prescription Benefits			
	FUND TOTAL	\$35,273.00	\$420.00	\$35,693.00
60 Internal Service Fund	No Self Insurance data to report			
	211 Medical Insurance			
	212 Dental Insurance			
	215 Eye Care Insurance			
	216 Prescription Insurance			
	271 Self-Insurance Medical Benefits			
	272 Self-Insurance Dental Benefits			
	275 Self-Insurance Eye Care Benefits			
	276 Self-Insurance Prescription Benefits			
	FUND TOTAL			
Total of All Funds		\$3,936,227.38	\$69,811.02	\$4,006,038.40

LEA : 116605003 Mifflinburg Area SD

Printed 10/29/2024 3:11:21 PM

Function	Special Education (Prior Year)	Nonspecial Education (Prior Year)	Total (Prior Year)	Special Education (Current Year)	Nonspecial Education (Current Year)	Total (Current Year)
2120 Guidance Services	106,666.07	604,441.07	711,107.14	145,929.81	692,747.27	838,677.08
2140 Psychological Services	27,430.46	155,439.28	182,869.74	17,930.77	85,119.65	103,050.42
2150 Speech Pathology and Audiology Services	46,273.27		46,273.27	33,462.98		33,462.98
2160 Social Work Services	183,669.71		183,669.71	196,694.85		196,694.85
2260 Instruction and Curriculum Development Services	68,473.47	496,437.35	564,910.82	91,939.45	436,448.22	528,387.67
2350 Legal and Accounting Services	6,655.00	12,505.80	19,160.80	11,070.13	46,410.72	57,480.85
2420 Medical Services	450.00	2,550.00	3,000.00	391.50	1,858.50	2,250.00
2440 Nursing Services	51,640.23	292,627.98	344,268.21	59,402.25	281,990.00	341,392.25
2700 Student Transportation Services	290,264.90	1,644,834.46	1,935,099.36	337,510.91	1,602,206.97	1,939,717.88
Total	\$781,523.11	\$3,208,835.94	\$3,990,359.05	\$894,332.65	\$3,146,781.33	\$4,041,113.98

LEA : 116605003     Mifflinburg Area SD

(PRINCIPAL AMOUNTS ONLY)								
<u>GOVERNMENTAL FUNDS/ ACTIVITIES</u>	Short-Term Borrowing	General Obligation Bonds/Notes	Authority Building Obligations	Leases, Other Right to Use Arrangements	Extended Term Financing Agreements	Other Long Term Debt/Liabilities	OPEB, Comp Abs, Net Pension Liab	Total
1. Debt at Beginning of Fiscal Year		30,660,000.06					45,449,985.00	76,109,985.06
2. Additional Debt Incurred During Year							597,725.00	597,725.00
3. Retirements and Repayments		1,335,000.00					23,983.00	1,358,983.00
4. Debt at End of Fiscal Year		29,325,000.06					46,023,727.00	75,348,727.06
5. Accreted Interest at End Of Fiscal Year								
6. Total Debt and Accreted Interest		29,325,000.06					46,023,727.00	75,348,727.06
7. Current Portion P&I - Due within 1 year		2,404,650.00						2,404,650.00
8. Interest Paid during current fiscal year		1,067,363.19						1,067,363.19

(PRINCIPAL AMOUNTS ONLY)								
<u>PROPRIETARY FUNDS</u>	Short-Term Borrowing	General Obligation Bonds/Notes	Authority Building Obligations	Leases, Other Right to Use Arrangements	Extended Term Financing Agreements	Other Long Term Debt/Liabilities	OPEB, Comp Abs, Net Pension Liab	Total
1. Debt at Beginning of Fiscal Year							7,167.50	7,167.50
2. Additional Debt Incurred During Year								
3. Retirements and Repayments							1,375.00	1,375.00
4. Debt at End of Fiscal Year							5,792.50	5,792.50
5. Accreted Interest at End Of Fiscal Year								
6. Total Debt and Accreted Interest							5,792.50	5,792.50
7. Current Portion P&I - Due within 1 year								
8. Interest Paid during current fiscal year								

LEA : 116605003     Mifflinburg Area SD

Total Principal and Interest Payments Made by Your School - All Funds

Function	Fund		Principal (910)	Principal (920)	Interest (830)	Total (Principal +Interest)	Misc Other Uses (990)
5110	10	General Fund	1,335,000.00		1,067,363.19	2,402,363.19	
5110	20	Special Revenue Funds					
5110	30	Capital Projects Funds					
5110	40	Debt Service Fund					
5110	90	Permanent Fund					
5120	10	General Fund					
5120	20	Special Revenue Funds					
5120	30	Capital Projects Funds					
5120	40	Debt Service Fund					
5140	10	General Fund					
5140	20	Special Revenue Funds					
5140	30	Capital Projects Funds					
5140	40	Debt Service Fund					
5140	90	Permanent Fund					
Total Debt Payments - Governmental Funds			\$1,335,000.00		\$1,067,363.19	\$2,402,363.19	

Function	Fund		Principal (910)	Principal (920)	Interest (830)	Total (Principal +Interest)
5110	50	Enterprise Fund				
5110	60	Internal Service Fund				
5120	50	Enterprise Fund				
5120	60	Internal Service Fund				
5140	50	Enterprise Fund				
5140	60	Internal Service Fund				
Total Debt Payments - Proprietary Funds						

LEA : 116605003     Mifflinburg Area SD

<u>Debt Details</u> <u>Governmental Funds/ Activities</u>		Principal Amounts Only				Current Portion Due Within One Year (Principal and Interest)	Interest Paid During Fiscal Year
Debt Category	Debt Issue Date (MM/YYYY)	Debt at Beginning of Fiscal Year	Additions	Reductions / Repayments	Debt at End of Fiscal Year		
General Obligation Bonds/Notes – CIB	03/2020	18,135,000.06		770,000.00	17,365,000.06	1,494,600.00	725,400.00
General Obligation Bonds/Notes – CIB	03/2020	12,525,000.00		565,000.00	11,960,000.00	910,050.00	341,963.19
Compensated Absences		685,968.00		23,983.00	661,985.00		
Net Pension Liability		40,858,000.00	559,000.00		41,417,000.00		
Other Post-Employment Benefits (OPEB)		3,906,017.00	38,725.00		3,944,742.00		
Totals for Debt Entered:		\$76,109,985.06	\$597,725.00	\$1,358,983.00	\$75,348,727.06	\$2,404,650.00	\$1,067,363.19

<u>Bond Details</u> <u>Proprietary Funds</u>		Principal Amounts Only				Current Portion Due Within One Year (Principal and Interest)	Interest Paid During Fiscal Year
Debt Category	Debt Issue Date (MM/YYYY)	Debt at Beginning of Fiscal Year	Additions	Reductions / Repayments	Debt at End of Fiscal Year		
Compensated Absences		7,167.50		1,375.00	5,792.50		
Totals for Debt Entered:		\$7,167.50		\$1,375.00	\$5,792.50		

LEA : 116605003     Mifflinburg Area SD

Printed 10/29/2024 3:11:33 PM

General Fund (10)

Section 1: Tuition/Purchased Services as Reported within Expenditure Detail		Amount
Tuition Reported in General Fund Expenditures 1000-560		2,793,863.91
Purchased Services in General Fund Expenditures 1000-594 and 1000-597		
Section 1 Total		\$2,793,863.91

Section 2: Tuition Paid to Institution Types During Fiscal Year		Tuition Paid For Nonspecial Education	Tuition Paid For Special Education	Total
1	1306 Institutions			
2	Institutionalized Children's Programs			
3	Juveniles Incarcerated in Adult Facilities			
4	Residential Treatment Facilities			
5	Other Local Education Agencies		7,500.00	7,500.00
6	Brick and Mortar Charter Schools			
7	Cyber Charter Schools	592,894.12	292,762.84	885,656.96
8	Career and Technology Centers	1,357,680.54		1,357,680.54
9	Approved Private Schools		430,650.00	430,650.00
10	PA Chartered Schools for the Deaf and Blind			
11	Private Residential Rehabilitative Institutions		112,376.41	112,376.41
12	Juvenile Detention Centers			
13	Special Program Jointures			
14	Other Tuition Not Included Elsewhere In This Section			
Section 2 Total		\$1,950,574.66	\$843,289.25	\$2,793,863.91



LEA : 116605003    Mifflinburg Area SD

Printed 10/29/2024 3:11:37 PM

Fund	School	School Number	Local Personnel	Local Nonpersonnel	State Personnel	State Nonpersonnel	Federal Personnel	Federal Nonpersonnel	Total	Explanation
10										
	Mifflinburg Area Intrmd Sch	7863	5,485,100.32	1,427,507.75	1.00	1.00	356,585.56	145,100.83	7,414,296.46	
	Mifflinburg Area MS	6809	5,727,040.29	1,261,983.58	1.00	1.00	138,503.54	46,579.83	7,174,109.24	
	Mifflinburg Area SHS	4091	6,788,678.26	1,420,464.64	1.00	1.00	66,085.29	24,164.34	8,299,394.53	
	Mifflinburg El Sch	6360	5,311,518.81	1,381,830.31	355,186.75	1.00	482,014.91	148,352.51	7,678,904.29	
Total			23,312,337.68	5,491,786.28	355,189.75	4.00	1,043,189.30	364,197.51	30,566,704.52	