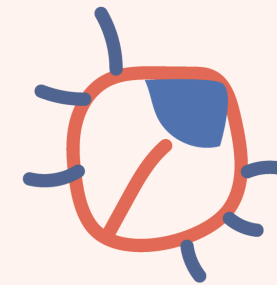
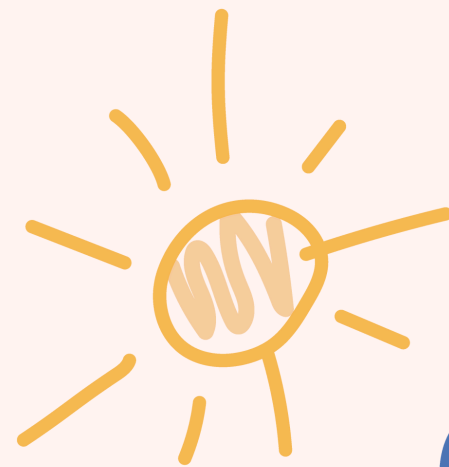
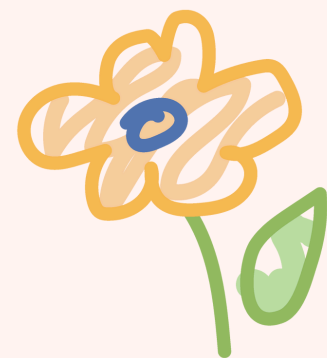


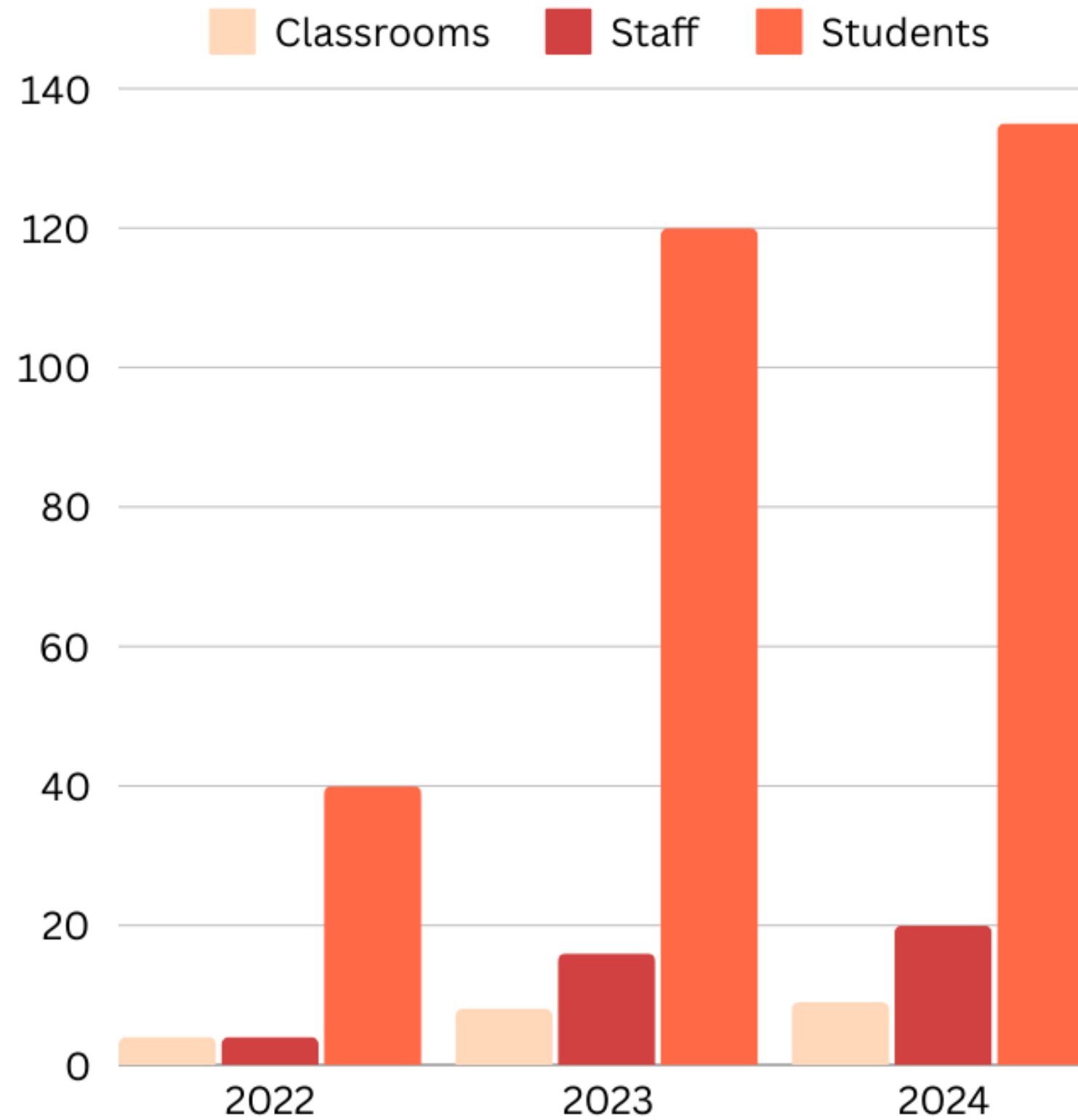


Preschool Quality Study Overview

2023-2024

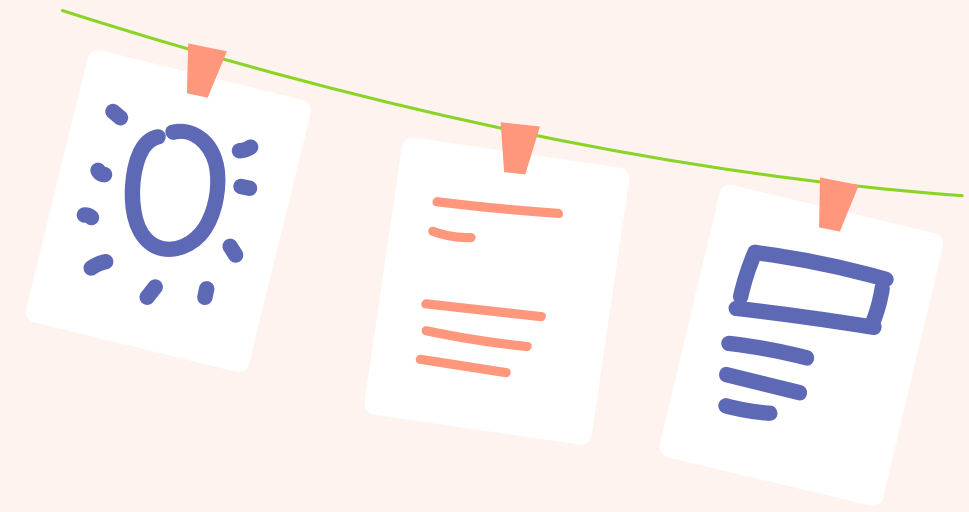


Memorial Preschool by the Numbers





Who is NIEER?



NIEER National Institute for Early Education Research based Rutgers University.



Their goal: Transform entire early education ecosystems through...

- research that is child-centered
- addressing the needs of young children and their families
- building a foundation for later success in school and beyond



How were we evaluated?

Early Childhood Environment Rating Scale Third Edition (ECERS-3)

The Early Childhood Environment Rating Scale–Third Edition (ECERS–3) is an observation and rating instrument for preschool classrooms serving children aged three to five. It consists of 35 items scored on a scale of 1 to 7, depending on quality.

- 187 classrooms were observed in PEA Cohort 8 southern New Jersey districts during the spring of the 2023–2024 school year.
- At Memorial 5 classrooms we observed for 3 hours each over 3 days.



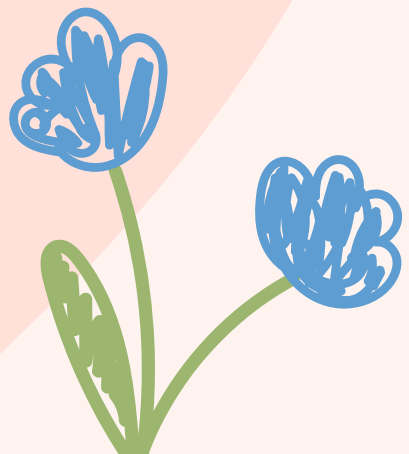
What do our scores say? Report Overview



	Mean	SD	Minimum	Maximum
Space & Furnishings	4.14	0.64	3.14	4.86
Personal Care Routines	3.30	0.94	1.75	4.25
Language & Literacy	5.24	0.73	4.00	5.80
Learning Activities	4.27	0.80	3.36	5.10
Interaction	5.56	0.52	4.80	6.20
Program Structure	5.40	0.92	4.33	6.33

To assist with the interpretation of scores, we follow the traffic light framework

- green scores above 5 suggest quality activities
- yellow scores between 3 and 5 approaching quality
- red scores below a 3 requiring immediate action



Program Structure & Interaction

This includes:

A daily schedule that is predictable yet flexible based on the ages and abilities of the children;

Teacher and child-initiated activities;

Sufficient amount of time for play with access to learning centers and materials;

A balance of center time, small group, and large group learning opportunities to

develop and grow at their own rate;

Smooth transitions where staff are prepared for the next activity and children are meaningfully engaged while they wait.



Language & Literacy

Children's language and literacy skills are supported through meaningful interactions with staff and peers and developmentally appropriate resources.

Engaging with children at play, modelling or scaffolding language, using questioning techniques, and helping them connect spoken and written language supports each child's language and literacy development.

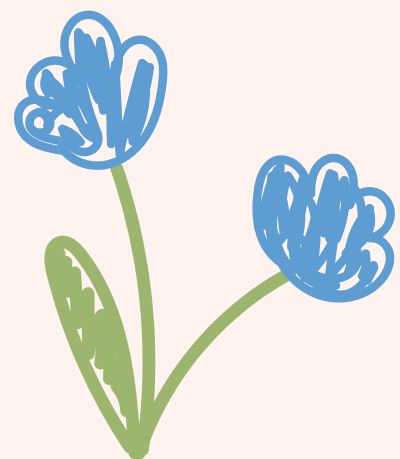
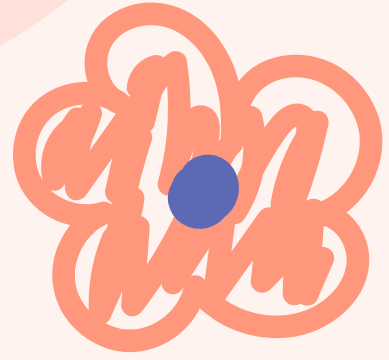
Helping children expand vocabulary

Encouraging children to use language

Staff use of books with children

Encouraging children's use of books

Becoming familiar with print



Fine-Tuning Learning Activities (Math)

Math in daily events
Understanding written numbers
Math materials and activities

Emphasis not simply on provision of materials but on teacher support and interactions when children use the materials.

Examine each center and ensure any additional materials needed are purchased.



Where will preschool take our students?

High-quality preschool can change the educational trajectories of young children and influence their lifetime achievement and well-being. NJDOE

Our first group of 2 year full time preschoolers are this year kindergarten class.

We've seen...

- smooth transitions into Kindergarten
- routines and expectations are familiar
- school community continues to be built
- social interactions and peer modeling
- stronger language and literacy foundation
- enrollment increased



Thank You

