



Lake Washington  
School District

# Facility Advisory Committee Meeting FAC 2024-25

Peter Kirk Elementary



Peter Kirk Elementary  
**EAGLES**

Welcome to  
**Peter Kirk Elementary School!**

Thursday, October 17, 2024

5:30-7:30





# Agenda

---

***Focus:*** *Creating processes to share information and ideas for ongoing improvement of LWSD facilities plans*

- 5:30-5:45: ***Welcome & Introductions***
- 5:45-6:30: ***Information Sharing***
  - FAC Purpose and Process
  - Facility & Construction Project Updates
- 6:30-6:35: ***Break***
- 6:35-7:00: ***Feedback & Recommendations***
  - November Levy Information Campaign Updates
  - FAC Work Plan 2024-25
- 7:00-7:30: ***Facility Tour – Peter Kirk Elementary School***



# CHECK-IN: HOW WILL YOU SPEND HALLOWEEN?



- Pick a picture that represents you on Halloween
- Introduce yourself by sharing your **name**, **role**, and **interest** as a representative on the committee
- Share which picture you chose and why



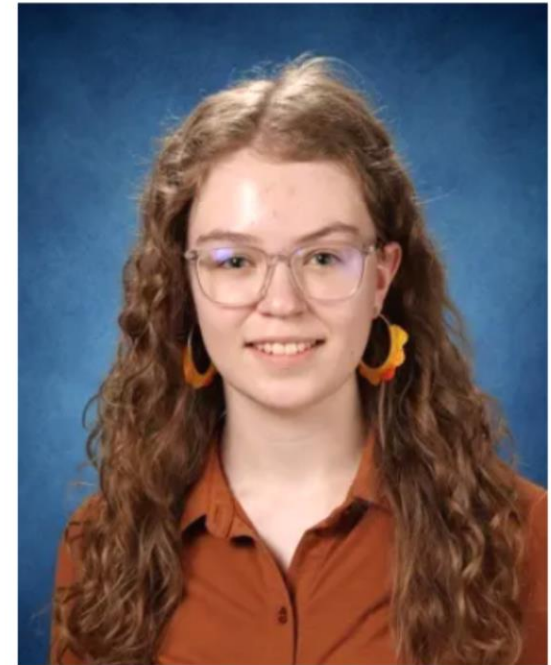


## Local Celebrity!

### WHO NEEDS GRAVITY? – EASTLAKE STUDENT CHOSEN TO FLY IN MICROGRAVITY TO TEST PROJECT

Oct 2 2024

**Eastlake High School** senior **Lily Myers** has been very busy this last year. In addition to preparing for her final year in high school, she has been rubbing shoulders with some very smart people. Last July, Lily participated in the nationally competitive NASA STEM Enhancement in Earth Science (SEES) summer internship program, where she had the unique opportunity to work alongside NASA experts on critical earth and space research missions. As part of the internship, students submitted research proposals for a chance to fly their experiments in a microgravity environment. Myers was one of four students selected to fly their project, titled “Damping of Liquid Propellant Sloshing using Closed-Cell Polyurethane Foam.”



Cell Polyurethane Foam.”

“Damping of Liquid Propellant Sloshing using Closed-  
one of four students selected to fly their project” titled

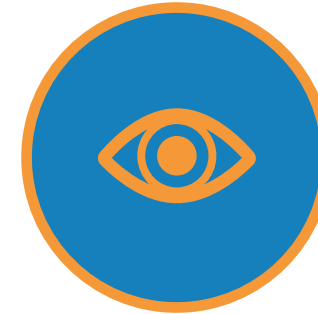


# LWSD Mission and Vision



## Our mission

**Each** student will graduate prepared to lead a rewarding and responsible life as a contributing member of our community and greater society.



## Our vision

**Every** Student Future Ready:

- Prepared for College
- Prepared for the Global Workplace
- Prepared for Personal Success

Equipping every student for a successful future



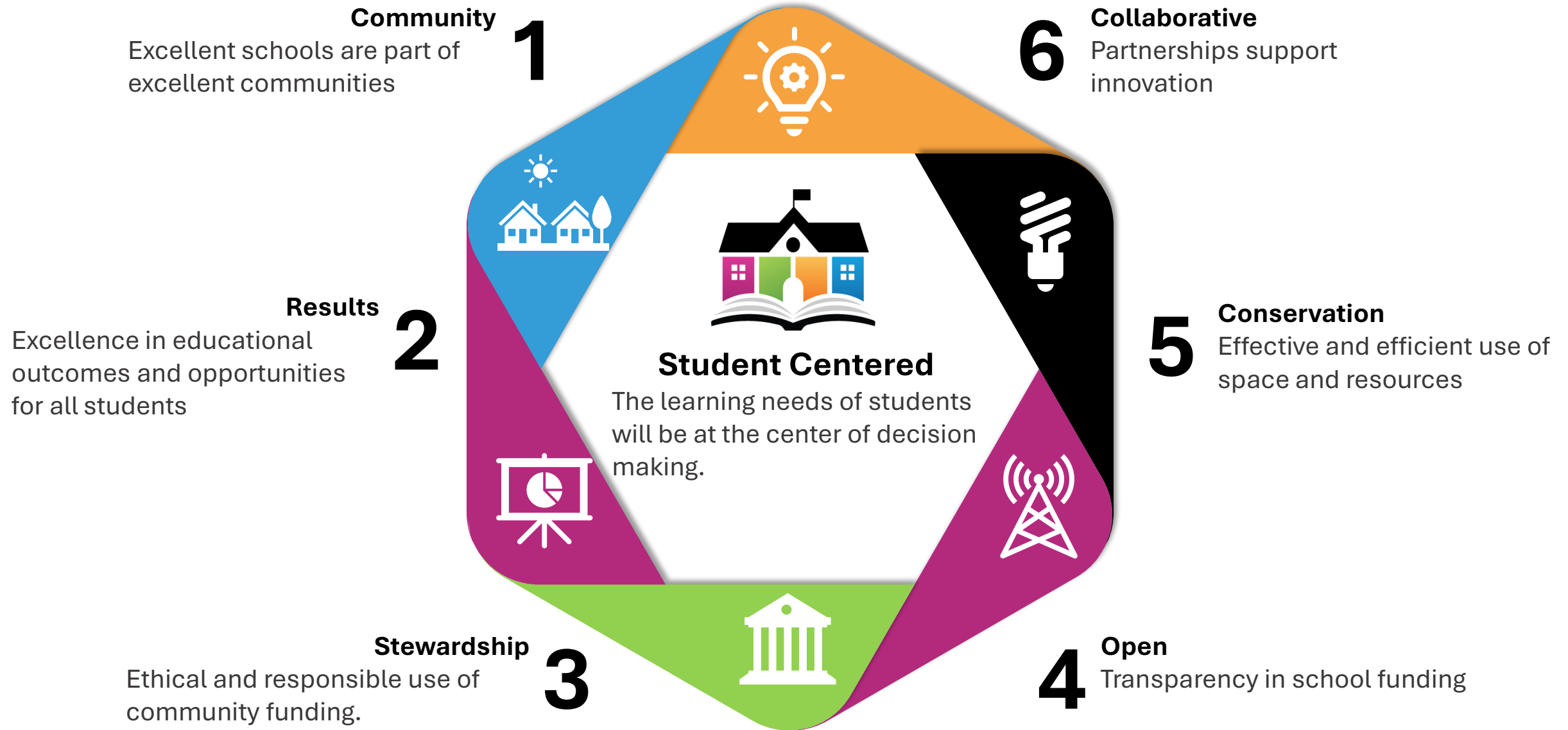




# Values and Beliefs

the ideals that guide this work







# FAC Purpose/Charge

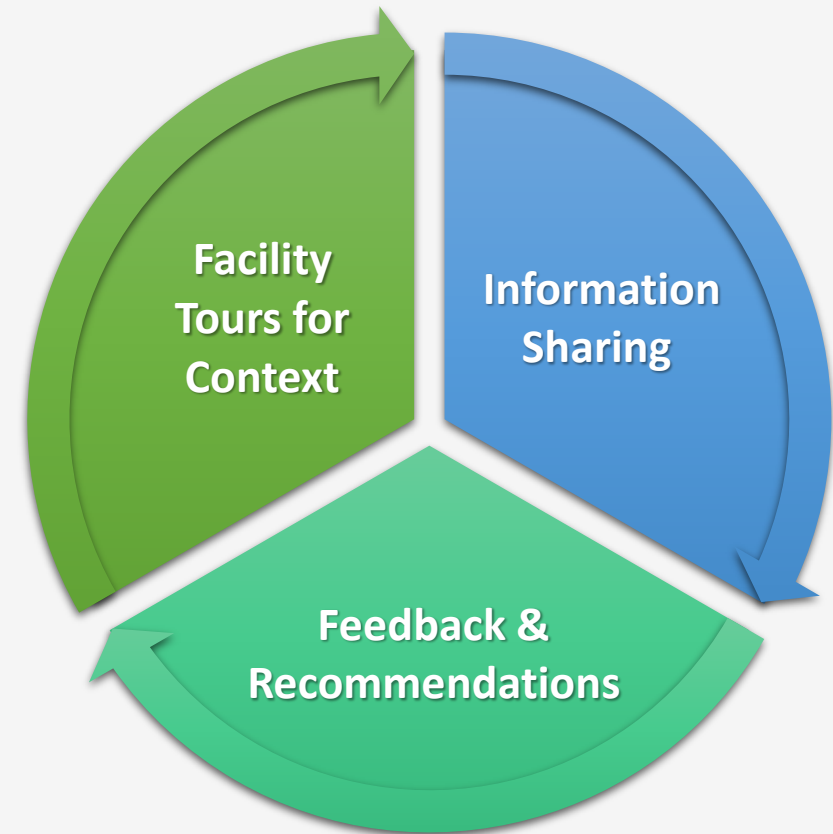
- To provide feedback and recommendations for current and future facility planning, informed by enrollment trends, community expectations and district programs.
- The facility strategy will align with the District's strategic plan and make recommendations to update aging facilities, provide for enrollment changes and continue to provide quality learning environments.
- The superintendent and school board will consider the feedback and recommendations as it plans current construction projects and future ballot measures to fund construction.







## FAC Meeting Structure



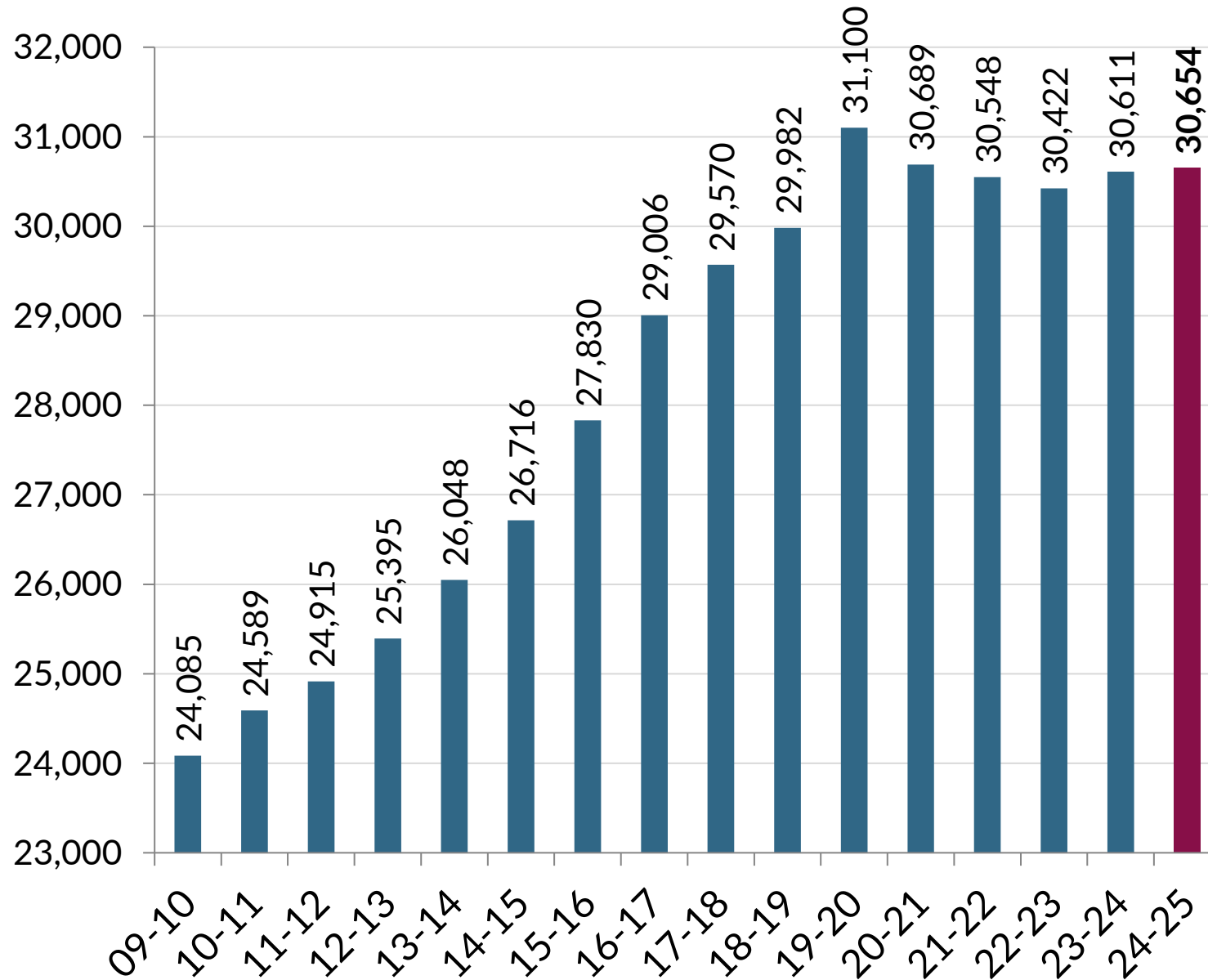




# Proposed Meeting Norms/Ground Rules

- Start / end on time
- Silence electronics
- Ask questions of each other for the purposes of gaining clarity and understanding
- Express yourself in terms of your needs and interests and the outcomes you wish to achieve
- Listen respectfully, and sincerely try to understand the other person's needs and interests
- Demonstrate curiosity and willingness to learn

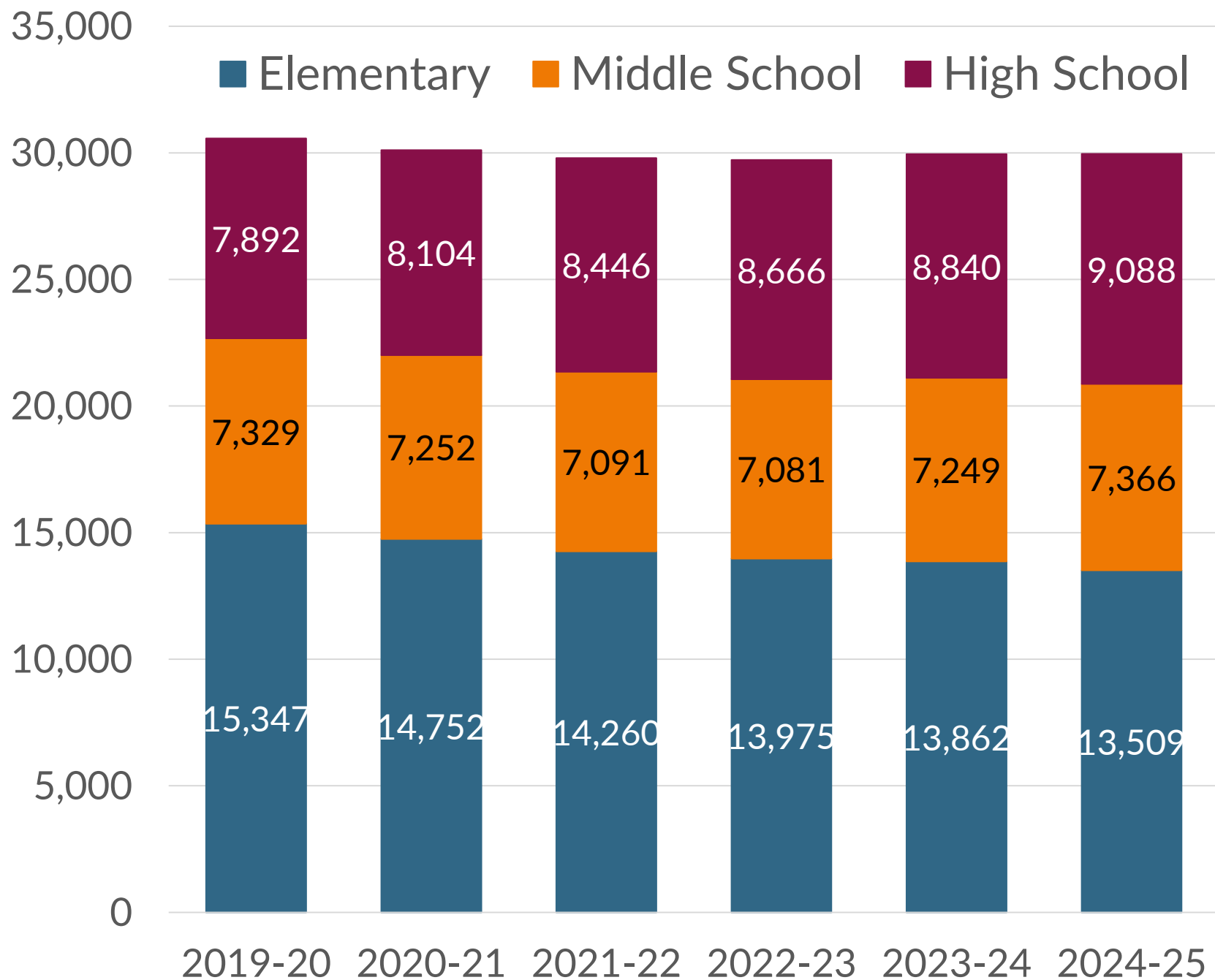
# Historical Enrollment



- **LWSD Enrollment History**
- October 1, 2024 Headcount Enrollment **30,654**
- Increase of 43 students from last year







# Enrollment History October 1 Headcount

- High school and middle school up 15.2% and 0.5%
- Elementary down 12.0%
- Fewer students in elementary eventually means fewer students moving up to secondary





## DESIGN & CONSTRUCTION

---

- 2022 6- Year Construction Levy
- 2022 4- Year Capital Levy



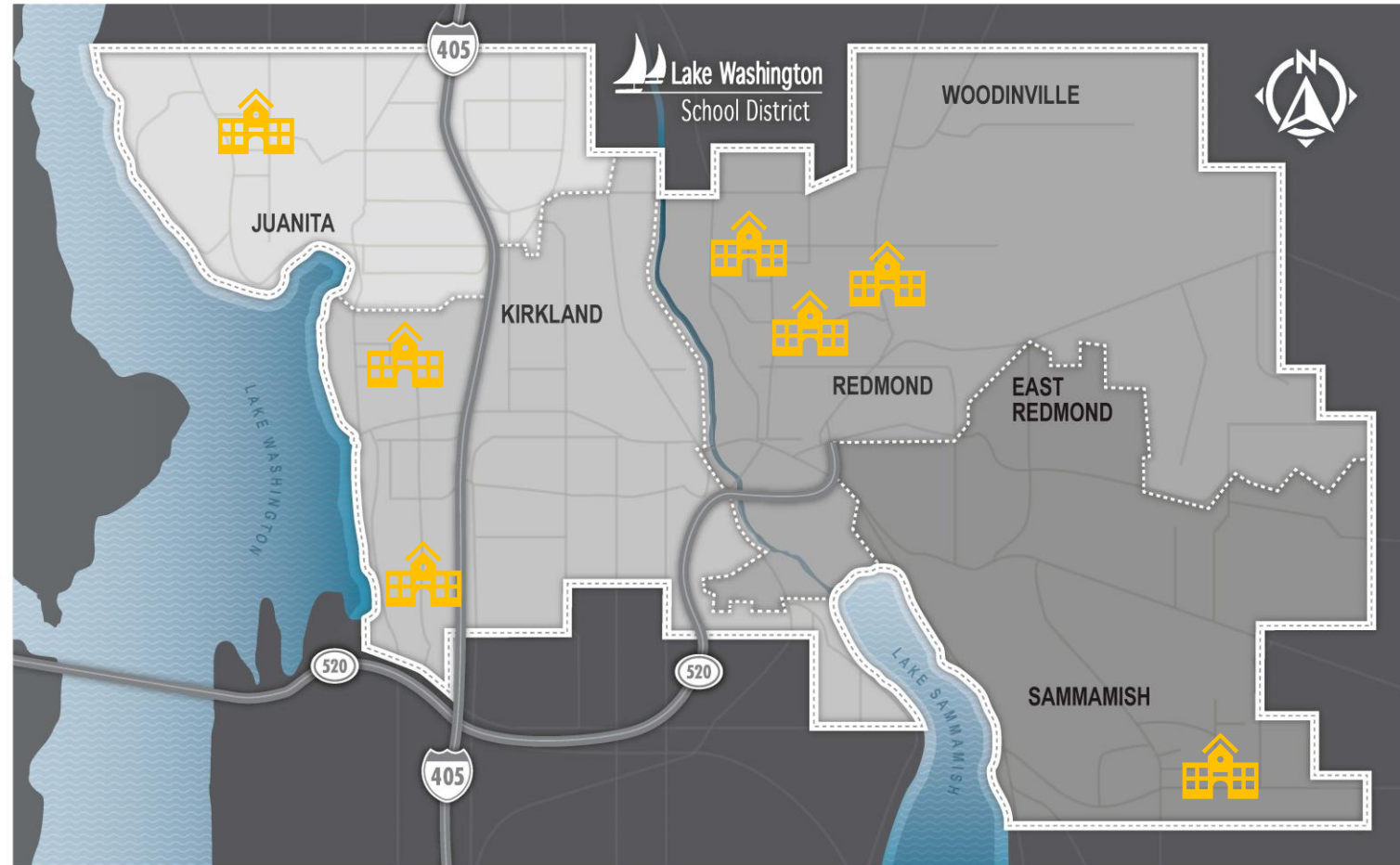


# 2022 6-Year Construction Levy

Design & Construction



BUILDING EXCELLENCE



# DESIGN & CONSTRUCTION

## 2022 Construction Levy

### Middle School Additions (Finn Hill, Redmond, Kirkland)

- ✓ Pre-Design
- ✓ Design & Permitting
- ✓ Construction
- ✓ **Occupancy**

### High School Additions (Eastlake, Redmond)

- ✓ Pre-Design
- **Design & Permitting**
- **Construction**
- Occupancy

### Norman Rockwell Elementary Rebuild & Enlarge

- ✓ Pre-Design
- **Design & Permitting**
- Construction
- Occupancy

### Emerson High School/EMK12 Rebuild, Expand & Enlarge

- **Pre-Design**
- Design & Permitting
- Construction
- Occupancy



BUILDING EXCELLENCE





FINN HILL MIDDLE



KIRKLAND MIDDLE



REDMOND MIDDLE

## MIDDLE SCHOOL ADDITIONS – FINN HILL, REDMOND & KIRKLAND

Pre- Design

Design &  
Permitting

Construction

Occupancy  
2024



BUILDING EXCELLENCE

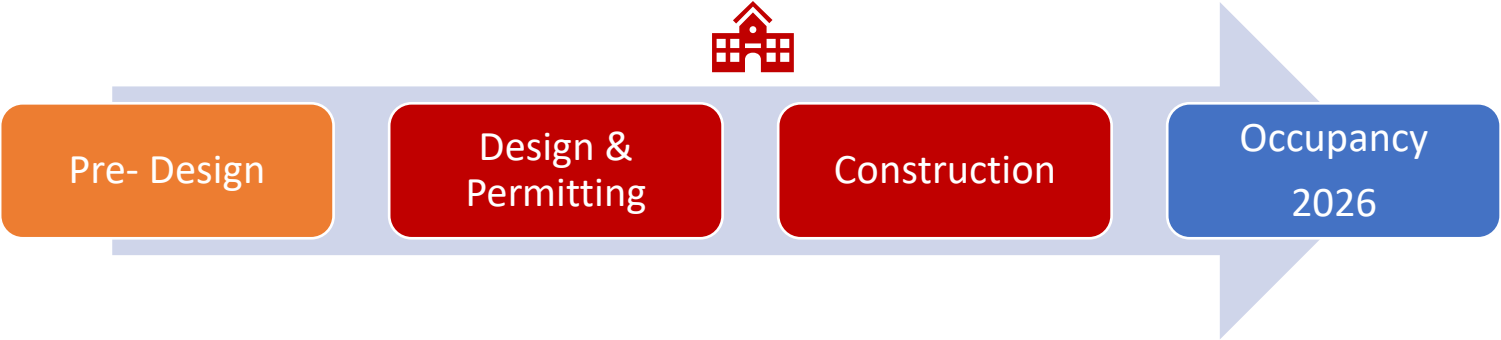


EASTLAKE HS RENDERING



REDMOND HS RENDERING

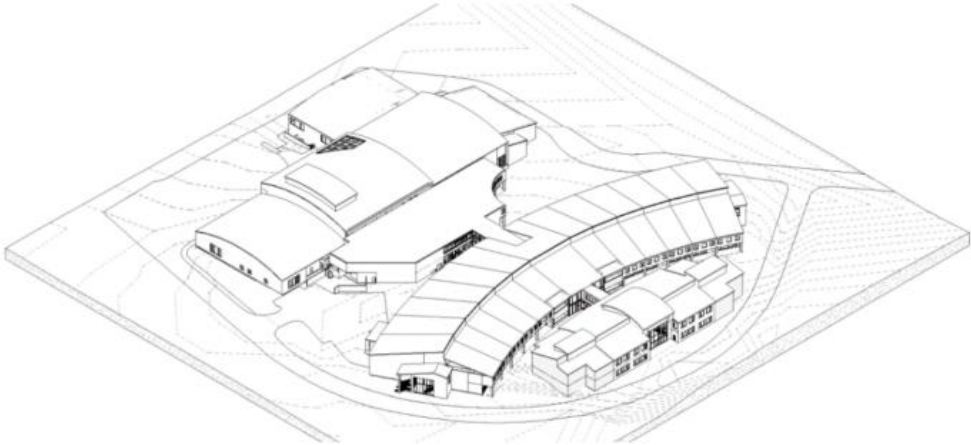
ADDITIONAL HIGH  
SCHOOL CAPACITY –  
Additions at Redmond  
HS and Eastlake HS





# Design Scenario B | Site Plan

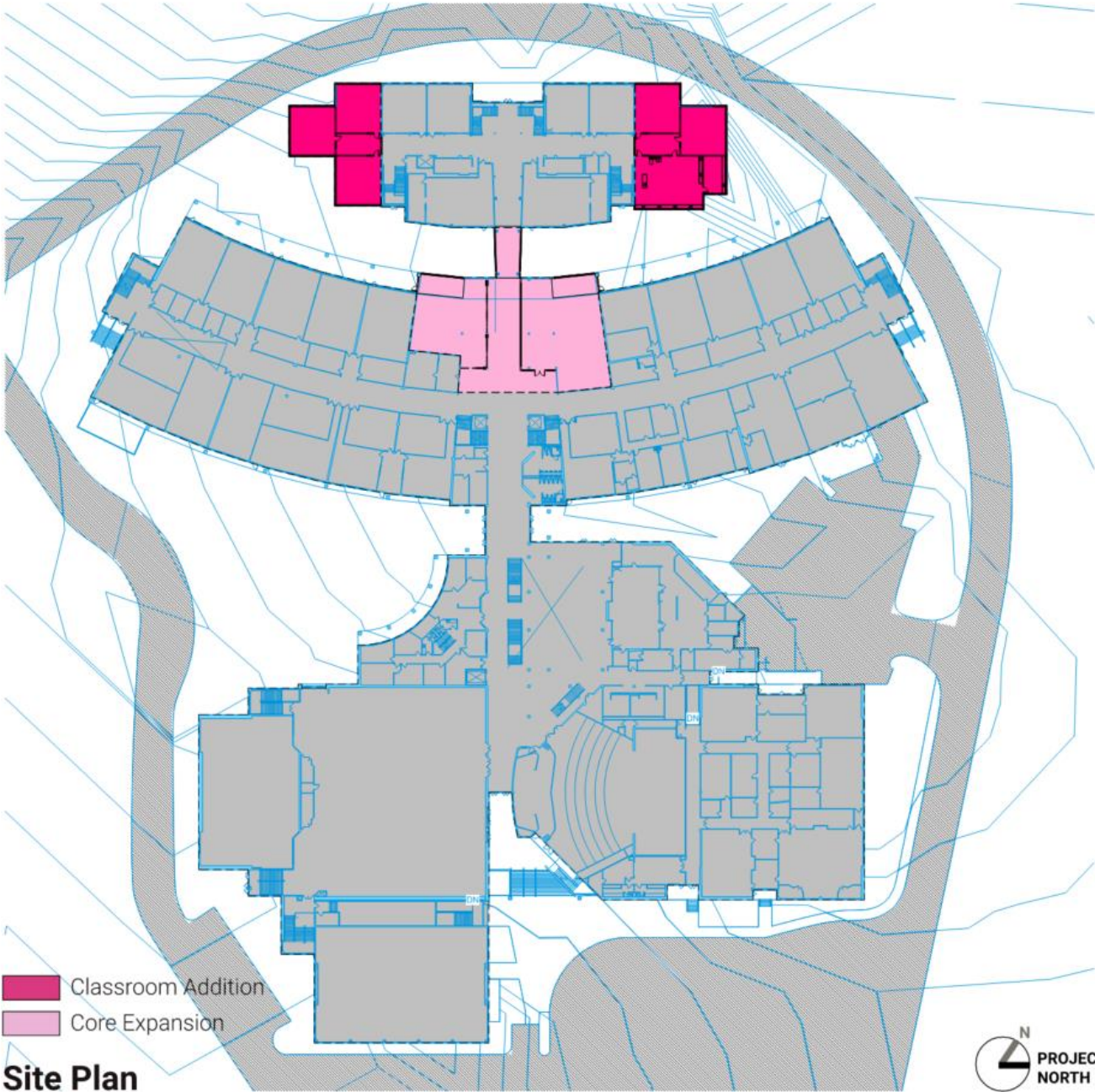
## Eastlake High School



Existing Building and Addition Bird's Eye View

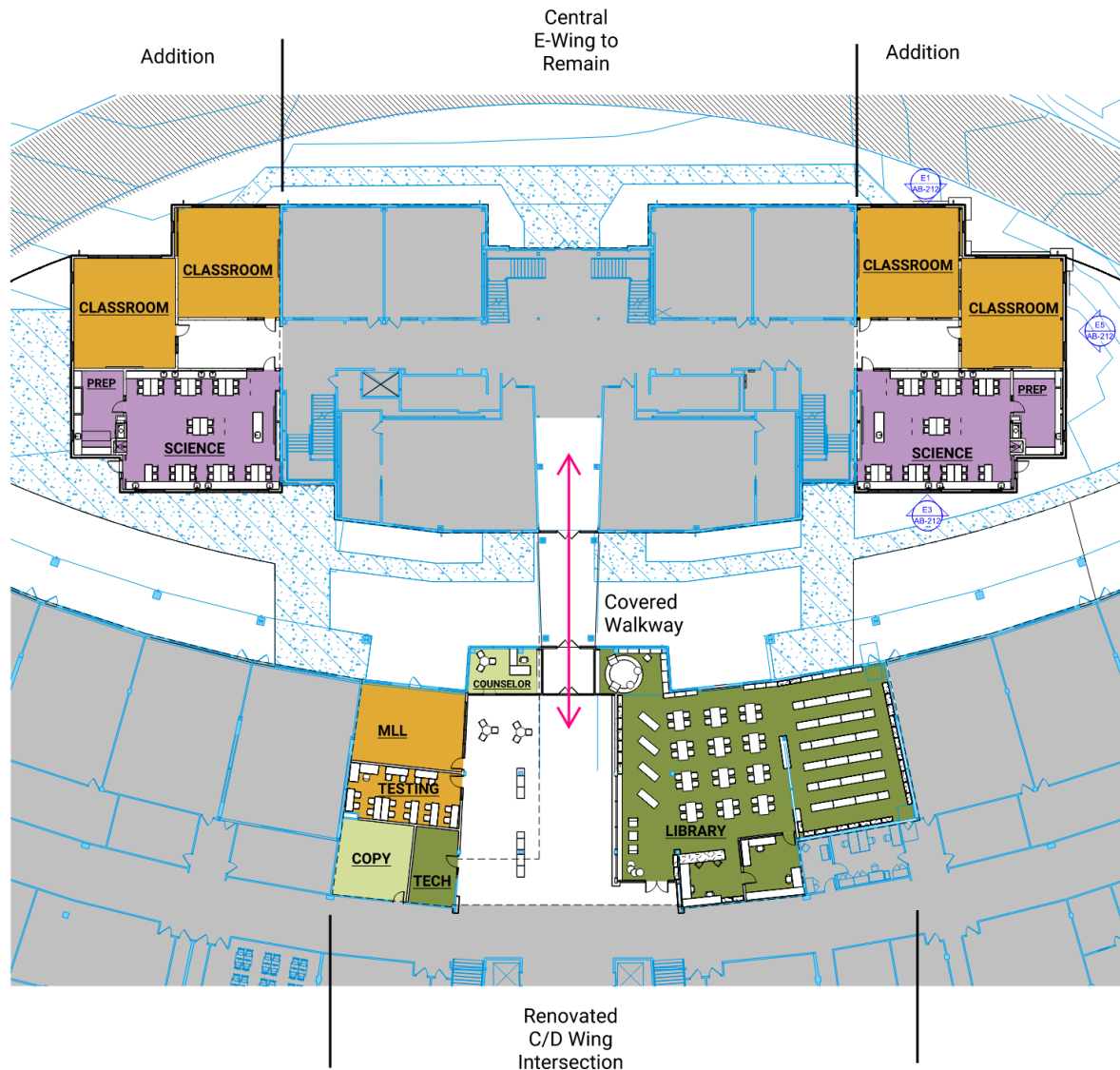


View of Northeast Classroom Addition



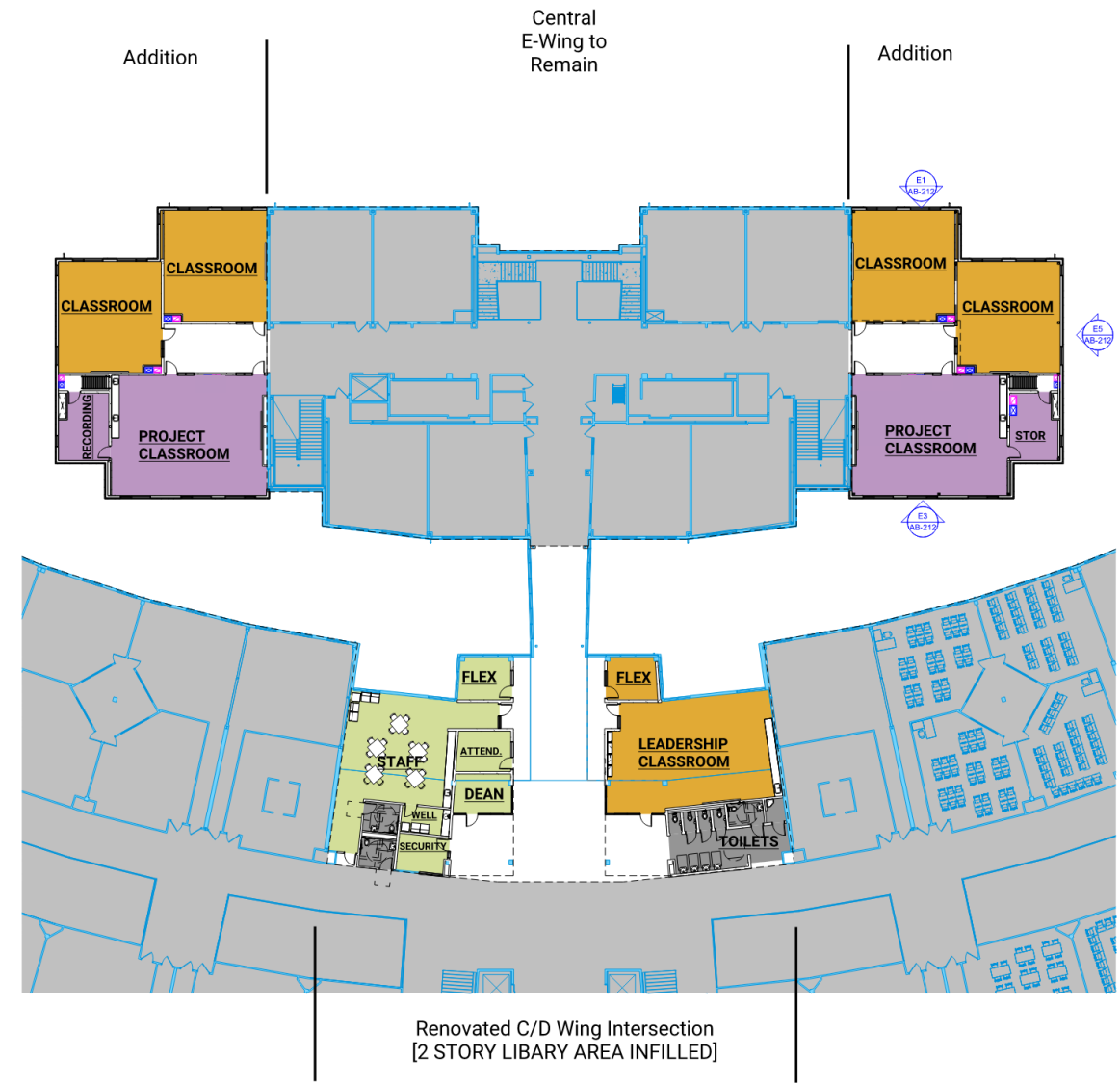
Site Plan





L01 FLOOR PLAN - LIBRARY + E-WING AREA

1/16" = 1'-0"



L02 FLOOR PLAN - LIBRARY+ E-WING AREA

1/16" = 1'-0"



# Scenario C

## Super-compact 'L' Scheme

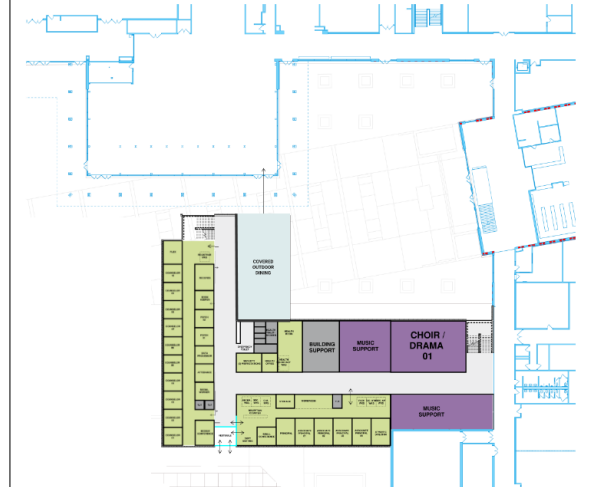


View of Classroom Addition Looking South



View of Classroom Addition Looking at the Courtyard

### Super-compact 'L' Scheme



Level 01



Level 02

#### Teaching Stations:

Demolition: (-1) Drama/Choir

Addition: (+11) Gen. Ed, (+1) Drama/Choir

**Total: + 11 Net**

**33,100 GSF**

**1,800 SF Open Air Commons**





## ROCKWELL ES – REBUILD & ENLARGE



Pre- Design

Design &  
Permitting

Construction

Occupancy  
2026



BUILDING EXCELLENCE

# Site Plan

## Legend

- 1 Drop Off
- 2 Bus Loading
- 3 Parking
- 4 Entry Plaza
- 5 Courtyard
- 6 Paved Play
- 7 Covered Play
- 8 All-Purpose Field
- 9 Play Structure
- 10 Utility Yard
- 11 Garden Area
- 12 Nature Play Area
- 13 Existing Outdoor Space at Trees
- 14 Outdoor Space at Banana Tree
- 15 Existing Access Path



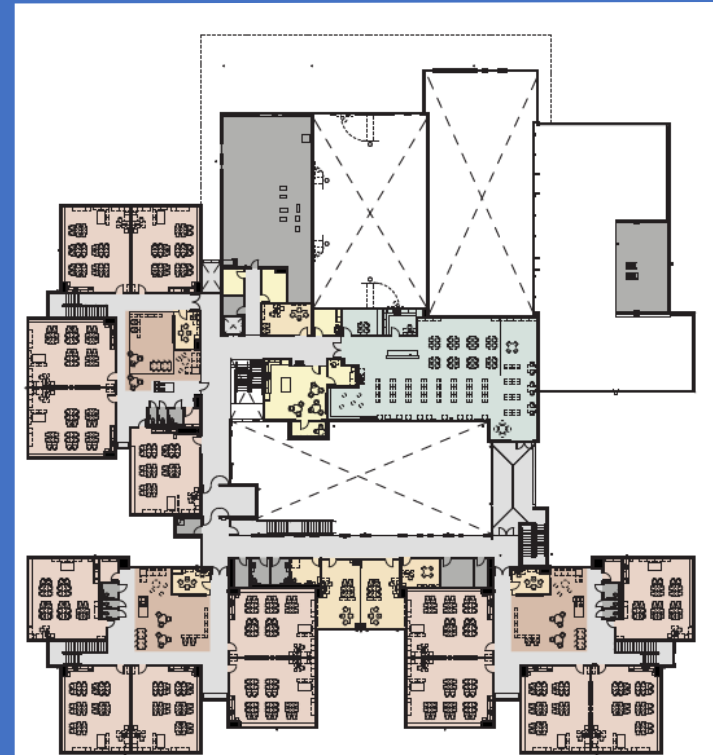
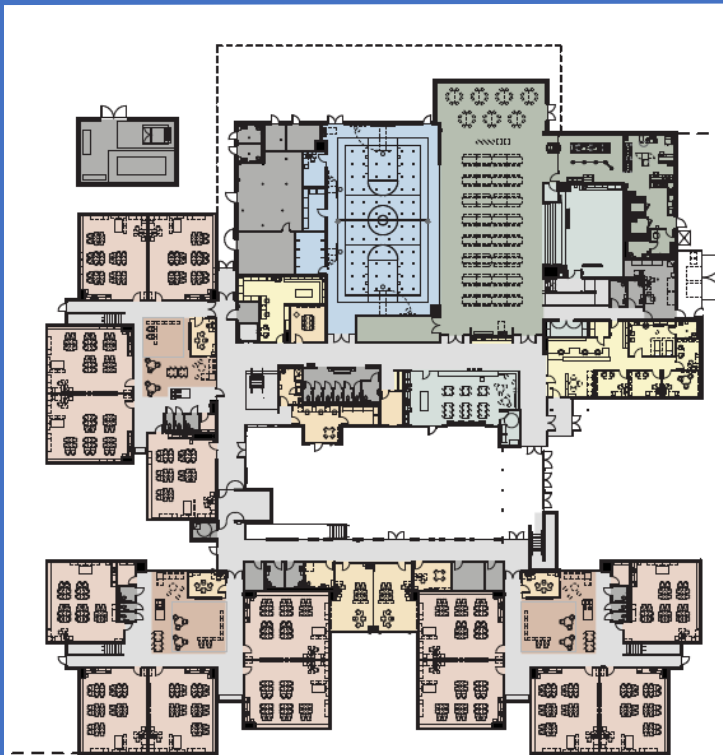


# Rockwell Elementary School

## Floor Plan: 2-story

### Cost Control Strategies Employed

- ❑ Avoid complex phasing and temporary portables by building 2-story learning clusters to reduce the building footprint
- ❑ Reduce the building square footage
- ❑ District standard ground source heat pump mechanical system with opportunity for cost savings associated with Inflation Reduction Act rebates



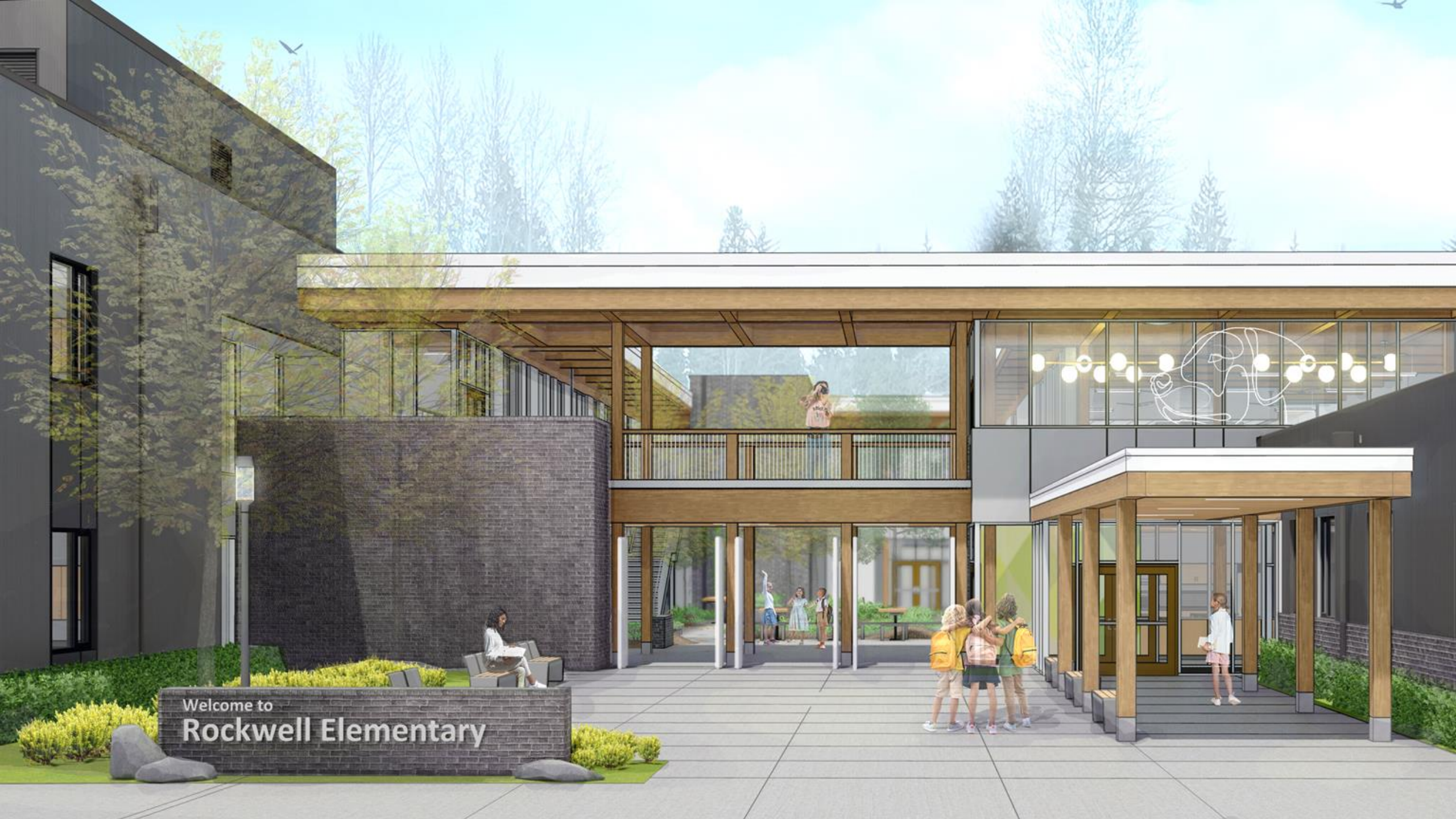
### FLOOR PLAN LEGEND

#### COLOR LEGEND

- CORE LEARNING
- SPECIALIZED EDUCATION
- LIBRARY
- GYM
- COMMONS
- ADMINISTRATION / STAFF
- BUILDING SUPPORT
- CIRCULATION







Welcome to  
**Rockwell Elementary**





Courtyard







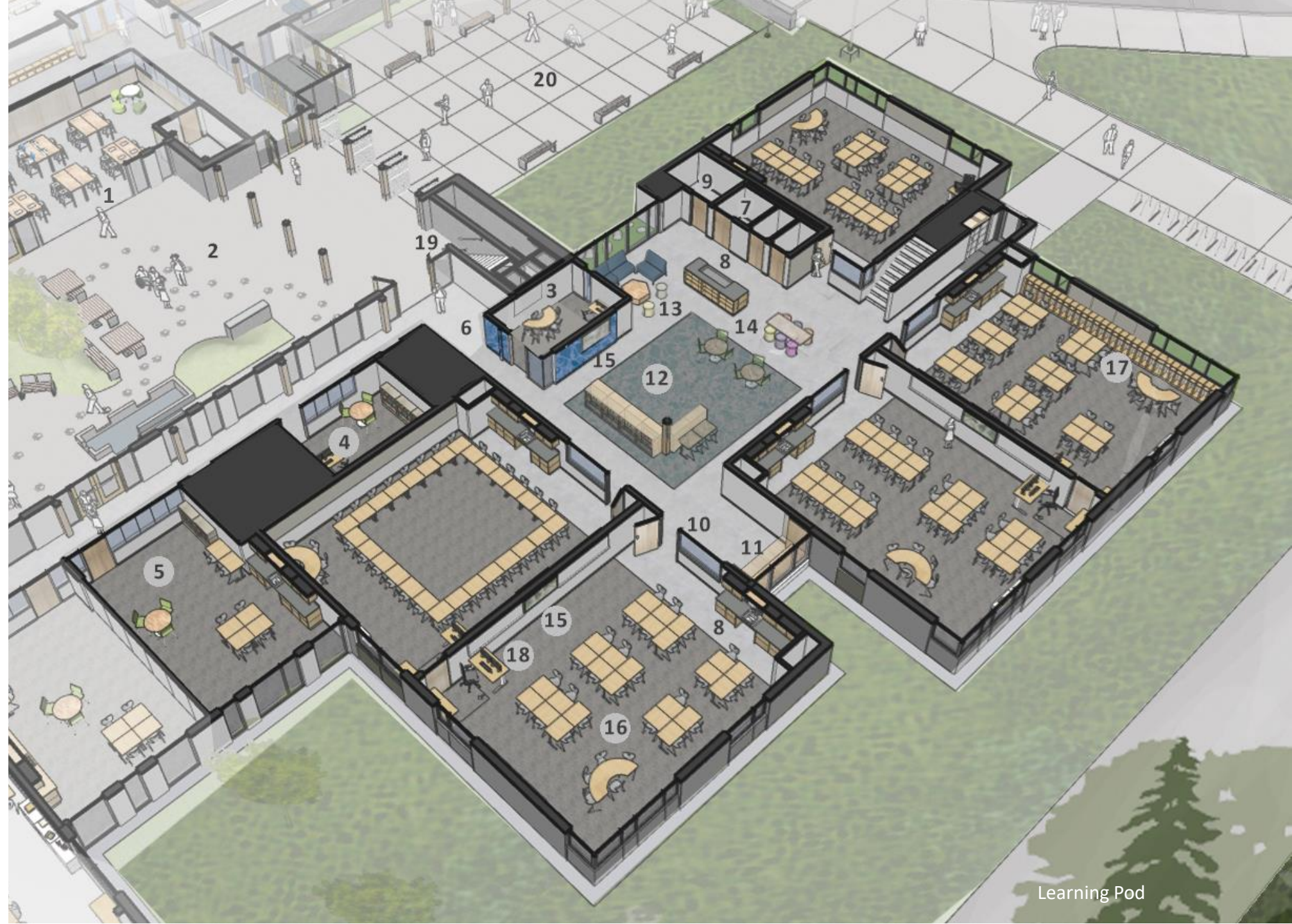


Commons



## Legend

- 1 STEAM Flex
- 2 Courtyard
- 3 Small Flex / Small Group
- 4 Medium Flex / Shared Office
- 5 Large Flex / Resource
- 6 Identity Graphics
- 7 Individual Stall Restrooms
- 8 Sink + Storage
- 9 Shared Storage
- 10 Window + Display Wall
- 11 Window Seat
- 12 Open Floor Area
- 13 Soft Seating
- 14 Tables + Chairs
- 15 Teaching Wall
- 16 Mobile Furniture
- 17 Cubbies
- 18 Teacher Desk
- 19 Stair to Bridge
- 20 Entry Plaza





## Phase 1: April 2025 - July 2025



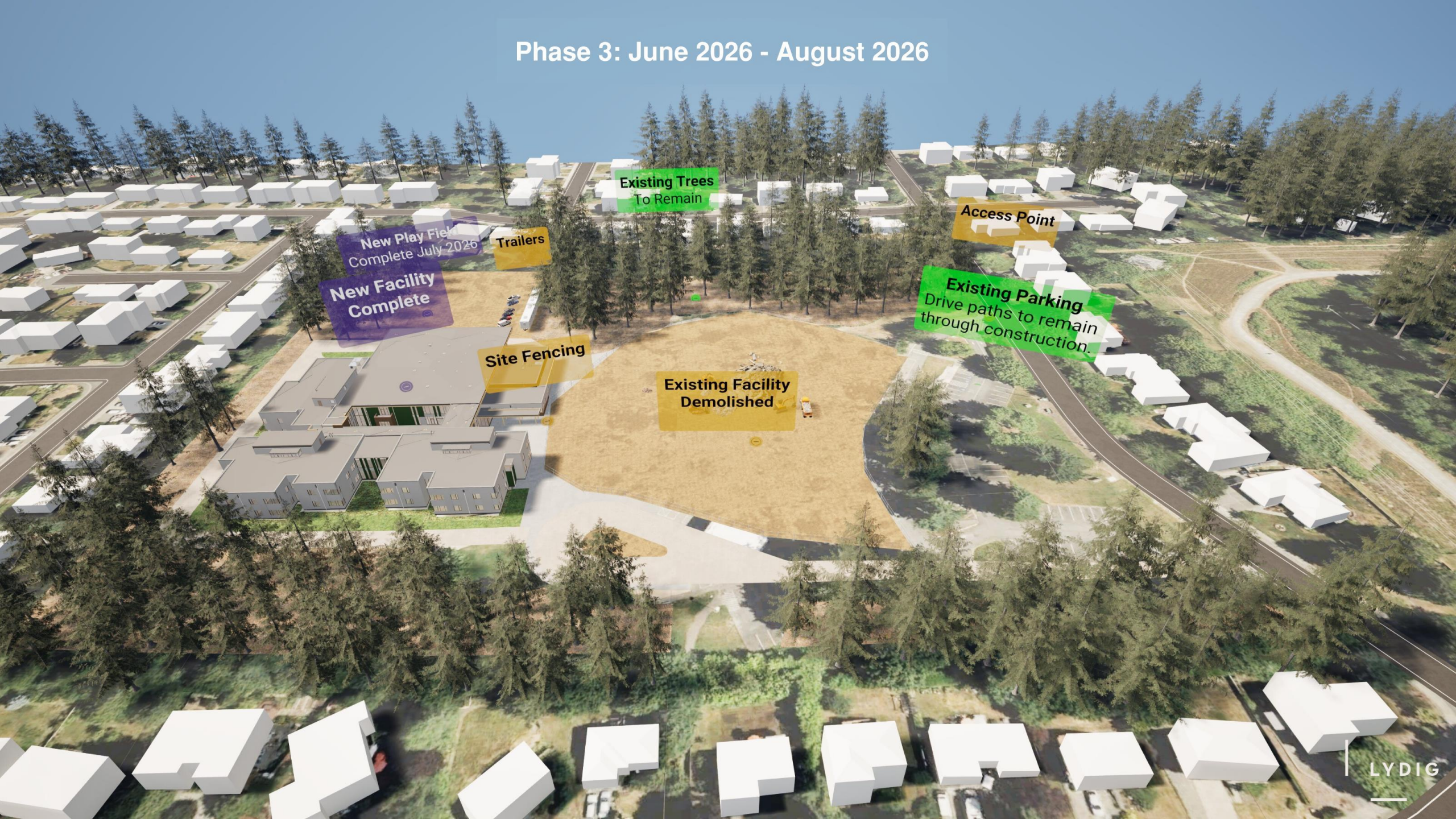


## Phase 2: June 2025 - July 2026





Phase 3: June 2026 - August 2026





## Phase 4: August 2026 - December 2026

**New Parking &  
Sitework  
Installed**





# DESIGN & CONSTRUCTION

## 2022 Construction Levy

### Emerson High School/EMK12 Rebuild, Expand & Enlarge

- **Pre-Design**
- Design & Permitting
- Construction
- Occupancy

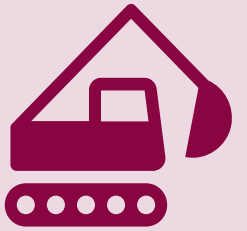
- Design Builder Team: Lease Crutcher Lewis + Mithūn
- Pre-Design: Fall 2024



# Financial Update – 2022 Construction Levy



2022 Construction Levy of \$295 million plus ongoing impact fee collection currently provides \$315 million in total revenue



\$306 million estimated for capacity projects and purchase of property



Limited General Obligation (LGO) bond sale closed June 2024

**\$315.3 million  
Total Revenue**

**\$20.3 million  
impact fees**

**\$295 million  
Six-year capital  
project levy  
funds**

**\$315.3 million  
Total Program**

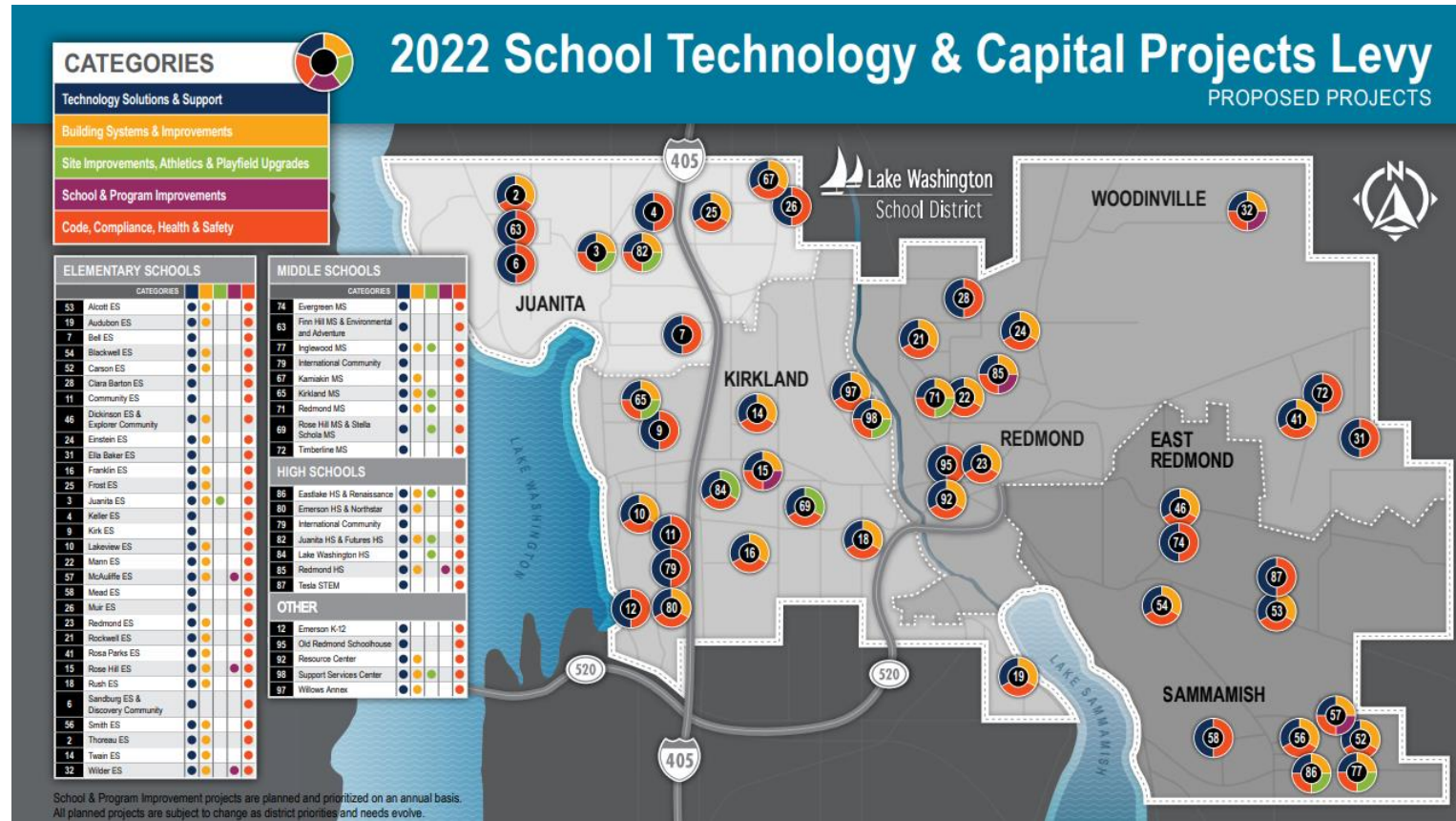
**\$9.1 million  
remaining**

**\$306.2 million  
Estimated  
Program  
Expenditures**



# 2022 4-Year School Technology and Capital Projects Levy

2023 - 2024





# Building Systems & Improvements

---

Envelope Enhancements: Baker ES

---

Flooring Improvements: Bell ES, Finn Hill MS, Redmond HS, Redmond MS

---

Operable Gym Wall Replacement: Juanita ES

---

HVAC Controls System Upgrades: Audubon ES, Inglewood MS, Juanita ES, Lakeview ES, Mann ES, SSC, Wilder ES

---

HVAC Upgrades: Alcott ES, Dickinson ES, Eastlake HS, Evergreen MS, Finn Hill MS, Redmond ES, Redmond HS, Resource Center

---

Intercom Upgrades: Eastlake HS, Redmond MS

---

Lighting Improvements: Keller ES, Resource Center

---

Community Pool Upgrades: Juanita HS



ALCOTT ES HVAC UPGRADE



BELL ES



FINN HILL MS



# Site Improvements, Athletics and Playfield Upgrades

---

Site Improvements: Baker ES , Bell ES

---

---

Water line replacement: Support Services  
Center

---

---

Bleacher Enhancements: District Wide

---

---

Parking Lot Improvements: Lake Washington  
HS

---

---

Field Improvements Inglewood MS (City of  
Sammamish Partnership)

---



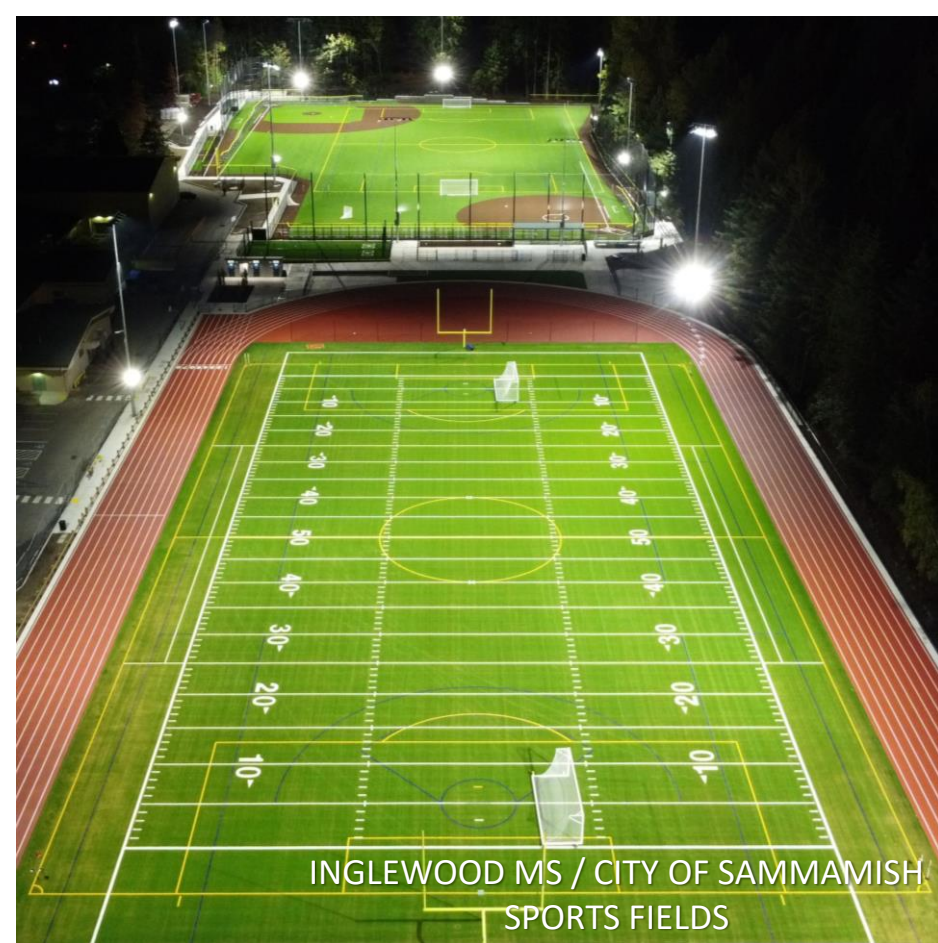
INGLEWOOD MS



BELL ES



LAKE WASHINGTON HS



INGLEWOOD MS / CITY OF SAMMAMISH  
SPORTS FIELDS



JUANITA HS



EVERGREEN MS





WANIC NURSING LAB



ROSE HILL ES

# School & Program Improvements

---

Alcott ES: Update Gym and Commons

---

Transition Academies: YWCA and Together Center

---

WANIC: Nursing Lab Classroom Renovation (OSPI)

---

Eastlake HS: Accessible Restroom Upgrade

---

Rose Hill ES: New Accessible Playground



# Code Compliance, Health & Safety



---

Access Controls Upgrades: Thoreau ES

---

ADA Upgrades: Evergreen MS

---

Fencing Improvements: Redmond ES

---

Fire, Life Safety System Upgrades: McAuliffe ES,  
Kirkland MS, Wilder ES

---

Plumbing Improvements: Evergreen MS, McAuliffe ES

---

Safety Improvements: Evergreen MS, Rose Hill MS

---

Structural Upgrades: Einstein ES

---

Water Bottle Filling Stations: Juanita ES, Thoreau ES,  
Sandburg ES, Keller ES, Frost ES, Muir ES



Thank You  
Construction  
Crew!

THANK YOU,  
VOTERS!



BUILDING EXCELLENCE





# Break - Take 5!

Take 5 minutes to grab a snack and stretch your legs!

## Coming Up:

- Levy Updates and Input
- Developing FAC Work Plan 2024-25
- Facilities Tour



# Levy Information Campaign Updates

## Upcoming Levy Dates:

- LWSD Mailer: Mailed 10/11 - should reach households this week.
- Ballots: Mailed 10/16
- Ballot boxes open: 10/17
- Upcoming Online Open Houses: 10/24 and 10/29

## Community Outreach and Feedback Data:

- 25 Levy Presentations given/scheduled

## FAC Input - What are you hearing, thoughts?

## Levy next steps



BUILDING EXCELLENCE



<https://www.lwsd.org/2024-levy>

**NOVEMBER 2024 CAPITAL CONSTRUCTION LEVY**  
Excellent schools are part of excellent communities.

Lake Washington School District is committed to ensuring every student has access to safe and modern learning spaces that meet their educational needs.

This levy would fund Phase 2 of our Building Excellence Plan by ensuring our oldest facilities meet the 21st century health, safety, technology and learning standards to support our students. This measure authorizes a six-year levy totaling \$676.9 million or \$112.8 million per year for six years. Levy collection would begin in 2026.

**THE LEVY WOULD INVEST IN OUR STUDENTS BY:**

- Rebuilding & enlarging
- Alcott Elementary
- Evergreen Middle School
- Kamiakin Middle School
- Smith Elementary
- Upgrading & modernizing
- Fieldhouse and Community Pool at Juanita High School

**HEALTH & SAFETY**  
When students and staff are in a building that supports their physical needs, they can focus on learning. The levy addresses the health and safety of our students and staff.

- School safety enhancements like security, emergency
- Updated heating, ventilation and cooling (HVAC) systems
- Modernize and add restrooms

**21ST CENTURY NEEDS/MODERNIZATIONS**  
To support every student and ensure they have access to the programs and learning spaces that support their futures, the levy will modernize our schools by adding:

- Classroom for updated technology and learning supports
- Flexible learning spaces to accommodate small groups and personalized supports

**SUSTAINABILITY & EFFICIENCY**  
Newer systems that meet 21st century standards will increase building efficiency, lowering the cost of operations. The levy will ensure that we:

- Design for sustainable construction and updated energy standards
- Maximize natural lighting
- Lower operating costs

**STUDENT CAPACITY**  
Our oldest schools are overcrowded. The levy will:

- Catch up with enrollment growth and overcrowding
- Provide capacity for changing enrollment and learning needs

**THE LEVY RATE BY DISTRICT**

District	Levy Rate
Auburn	\$4.71
Highline	\$4.09
Tahoma	\$3.82
Shoreline	\$3.54
Renton	\$3.53
Tukwila	\$3.51
Federal Way	\$3.42
Snoqualmie Valley	\$3.39
Issaquah	\$3.14
Kent	\$2.96
Northshore	\$2.84
Enumclaw	\$2.81
Lake Washington	\$2.01
Riverview	\$2.59
Vashon Island	\$2.38
Bellevue	\$2.12
Seattle	\$1.88
Mercer Island	\$1.44

The majority of the levy rate will be offset as old bonds are paid off and previous construction levies expire.

The Lake Washington School District does not discriminate in any program or activity on the basis of sex, race, creed, origin, color, national origin, age, religion or ethnicity, sexual orientation, gender expression or identity, disability, or the use of medical equipment or service animal and provides equal access to the Boy Scouts and other designated youth groups. The following provisions have been adopted to handle questions and complaints of alleged discrimination: Civil Rights Coordinator: Director of Human Resources, 425-936-1342, cwright@lwsd.org. Title IX Coordinator: Director of Student Services, 425-936-1342, hsmith@lwsd.org. Director of Special Services, 425-936-1407, aobrien@lwsd.org. 15220 NE 19th Street, Redmond, WA 98053.

**Excellent schools are part of excellent communities.**

**Please join us!**

**2024 BUILDING EXCELLENCE CAPITAL CONSTRUCTION LEVY ONLINE TOWN HALLS**

LWSD Superintendent Dr. Jon Holmen and Associate Superintendent of Business and Support Services Barbara Posthumus will offer a series of online town hall events about the 2024 Building Excellence Capital Construction Levy.

Each town hall meeting will offer an opportunity for question/answer sessions.

Learn more: [www.lwsd.org/2024levy](http://www.lwsd.org/2024levy)

**TUESDAY SEPTEMBER 24**  
6-7 P.M.  
[MEETING LINK](#)

**WEDNESDAY OCTOBER 16**  
7-8 P.M.  
[MEETING LINK](#)

**THURSDAY OCTOBER 24**  
12-1 P.M.  
[MEETING LINK](#)

**TUESDAY OCTOBER 29**  
6-7 P.M.  
[MEETING LINK](#)

**VOTE**  
Ballots due November 5, 2024

**BUILDING EXCELLENCE**

**FAQ**

**Q: Did you know that our four oldest schools are currently over capacity?**

**Number of students in LWSD in 2010-2011**  
24,330

**Number of students in LWSD in 2023-2024**  
30,605

**Finance Friday**

Did you know that as our district has grown, we didn't receive additional state construction funds to accommodate that growth?



# FAC Outcomes

- Share updates and information between funding measures
  - Project Updates
  - Financial updates/status
- Develop and provide input on future funding measures
- Understanding ongoing legislative and regulatory requirement
- Provide feedback to strengthen community engagement opportunities





# Committee Meeting Dates & Work Plan



## Topics for consideration:

- Upcoming Levies
  - Technology & Capital
  - Educational Programs & Operations
- Clean Buildings Legislation
- Sustainability
- Design Advisory
- Others?

❖ *Content of agendas may evolve*

Date	Location	Topics
Quarterly, 3 <sup>rd</sup> Thursday/month	5:30-7:30	
October 17	Peter Kirk Elementary <i>Kirkland</i>	<ul style="list-style-type: none"> <li>• Facility Plans &amp; Phase 1 Progress</li> <li>• Levy: Updates &amp; Input</li> <li>• 2024-25 FAC Work Plan</li> <li>• Facility Tour: Aligning Facility Design with Program Plans</li> </ul>
<i>November 21 Tentative</i>	TBD	<ul style="list-style-type: none"> <li>• <i>Pending Levy Measure Results</i></li> </ul>
January 17	TBD	<ul style="list-style-type: none"> <li>• Project Updates</li> <li>• Sustainability</li> <li>• Clean Buildings Legislation</li> </ul>
March 20	TBD	<ul style="list-style-type: none"> <li>• Project Updates</li> <li>• 2026 Technology &amp; Capital Projects Levy Planning</li> </ul>
May 15	TBD	<ul style="list-style-type: none"> <li>• Project Updates</li> <li>• 2026 Technology &amp; Capital Projects Levy Planning</li> </ul>



# FAC Meeting Input

Respond to the following questions using a separate sticky note for each response:

1. Which **facilities topics** would you like to learn more about?
2. Which topics would you like to provide **feedback & recommendations** about?





Agendas and presentations will be posted on Committee website

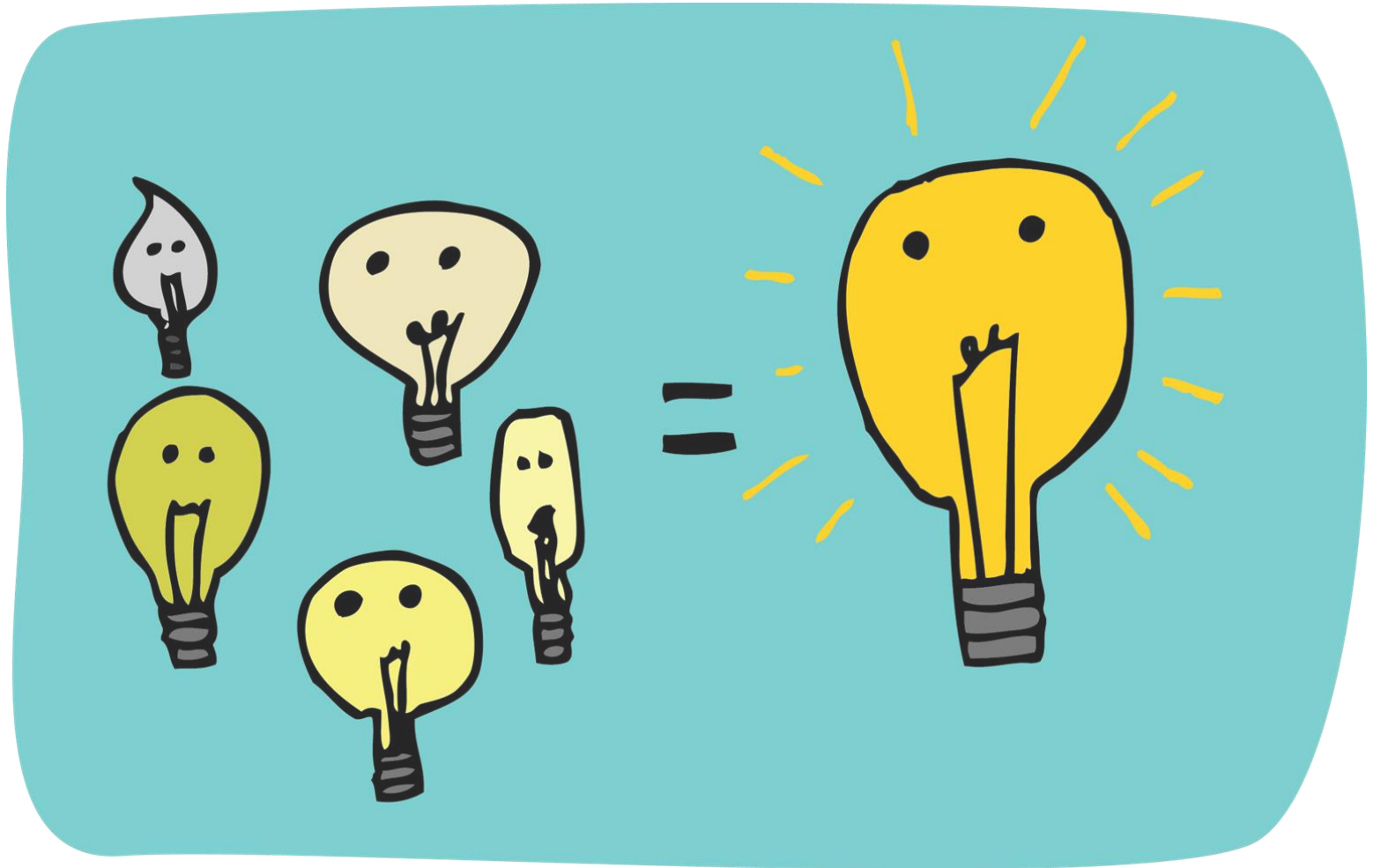


A screenshot of the Lake Washington School District website. The header includes the district logo, navigation links (TRANSLATE, SAFETY CONCERN, HELP, STAFF, SCHOOLS, STUDENTS &amp; FAMILIES), and a search icon. A secondary navigation bar lists ABOUT, EMPLOYMENT, GET INVOLVED (highlighted), PROGRAMS, SERVICES, and NOVEMBER 2024 LEVY. Below this, a dark blue bar contains links to Committees &amp; Workgroups, Parent/Community Partnerships, LINKS Lunch Buddy Program, and Volunteering in LWSO. The main content area shows a breadcrumb trail: HOME / GET INVOLVED / COMMITTEES &amp; WORKGROUPS / FACILITY ADVISORY COMMITTEE. The title 'FACILITY ADVISORY COMMITTEE' is prominently displayed. Under 'COMMITTEE PURPOSE/CHARGE', it states the committee provides feedback for facility planning and aligns with the district's strategic plan. Under 'MEETINGS', it notes quarterly meetings on Thursdays from 5:00-7:00 p.m. A small accessibility icon is in the bottom right corner.

<https://www.lwsd.org/get-involved/committees-workgroups/facility-advisory-committee>



***FAC Feedback:***  
*Additional Questions, Comments, Ideas?*





# Facility Tour: Peter Kirk Elementary School



Toby Brenner

*Support Services Planning Principal*

Ryan Ota

*Project Manager, Rockwell Elementary*







- Built in 1975
- 18 classrooms, 3 portables, 414 permanent capacity
- Single story, open concept classroom design
- Outdoor hallways, courtyards, and classroom entries
- Lack of shared instructional spaces
- Low natural daylight
- No Commons/Cafeteria

- Opened Fall 2019
- 30 classrooms, 690 permanent capacity
- 2 story, collaborative shared space classroom design
- Enclosed hallways and secure entry improvements
- Expanded parking, separate bus and driver loops
- Improved sustainability through design and materials
- Grass field through City of Kirkland partnership

## Facility Tour: Peter Kirk Elementary School

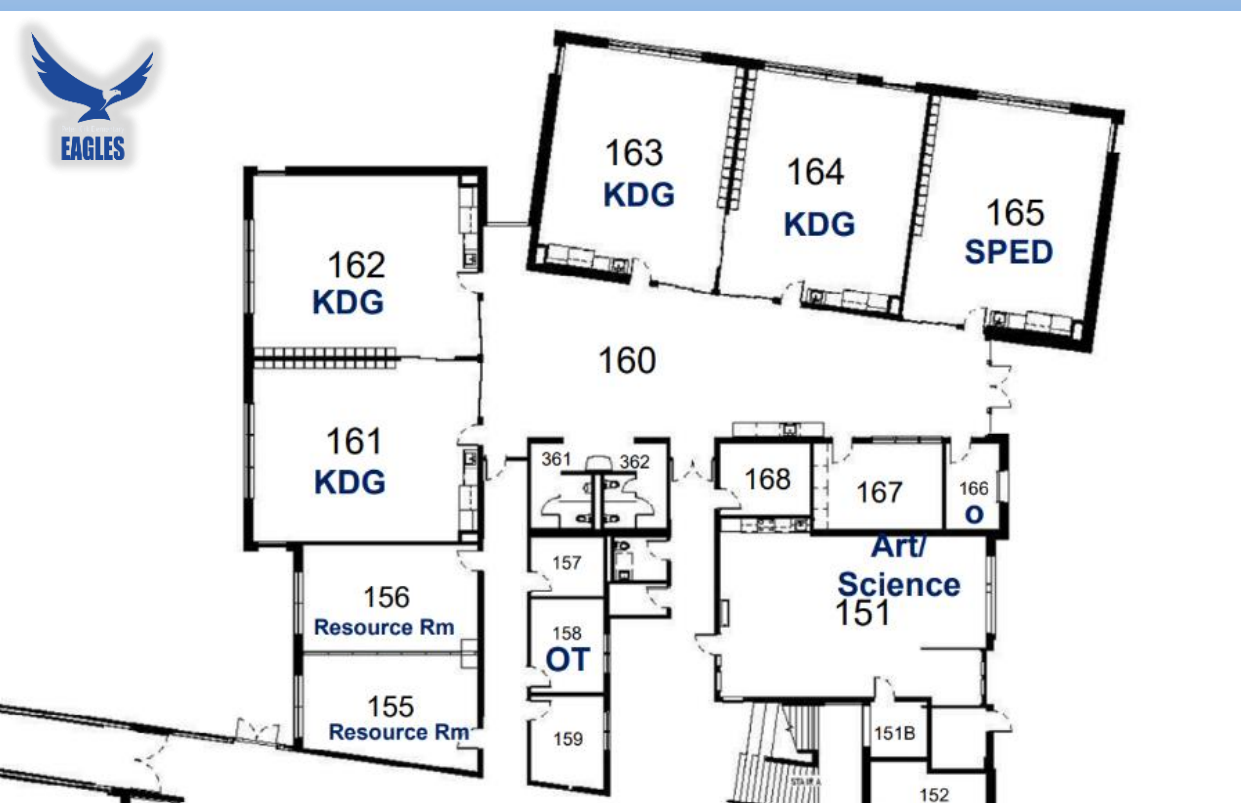




# Learning from Experience: Evolutionary Design

- SCIT process during planning to support alignment between facility design and educational programs
- Post-occupancy surveys to compare design intent with real-world impact
- Design teams for new schools consider previous plans and implementation for future modernization

*Kirk Elementary Classroom Layout*



*Rockwell Elementary Classroom Layout Design*



Facility Tour: Peter Kirk Elementary School

