

Construction Update

- HIGH SCHOOL
- MIDDLE SCHOOL
- CENTRAL OPERATIONS & RECEIVING
- ALLARD ELEMENTARY
- BROOKS ELEMENTARY



MOON AREA SCHOOL DISTRICT
SITELOGIQ
OCTOBER 28, 2024



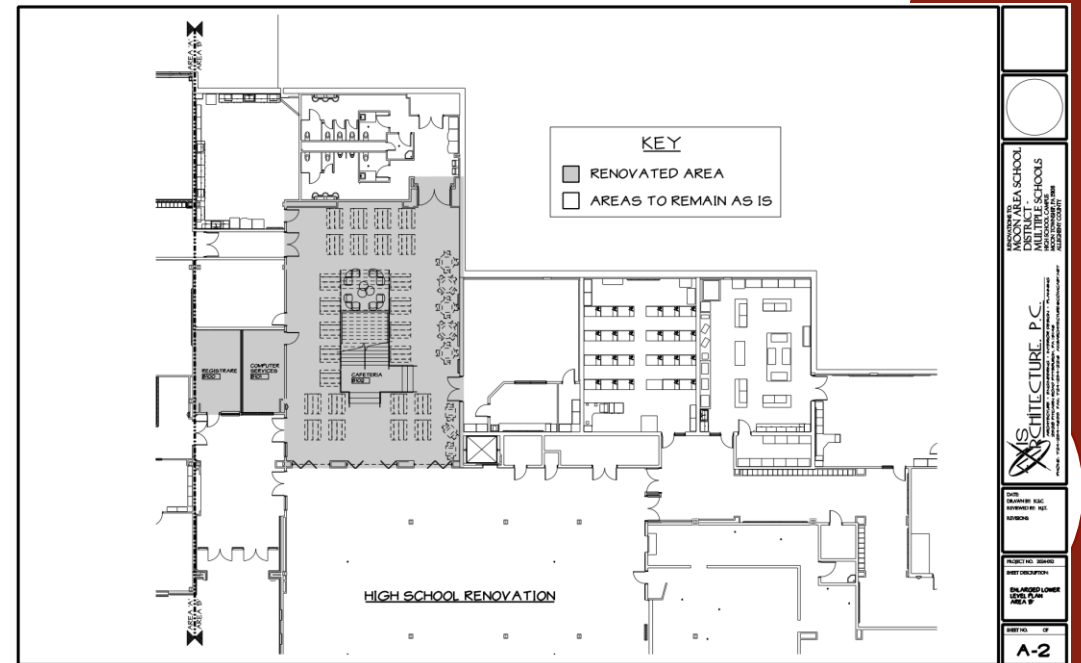
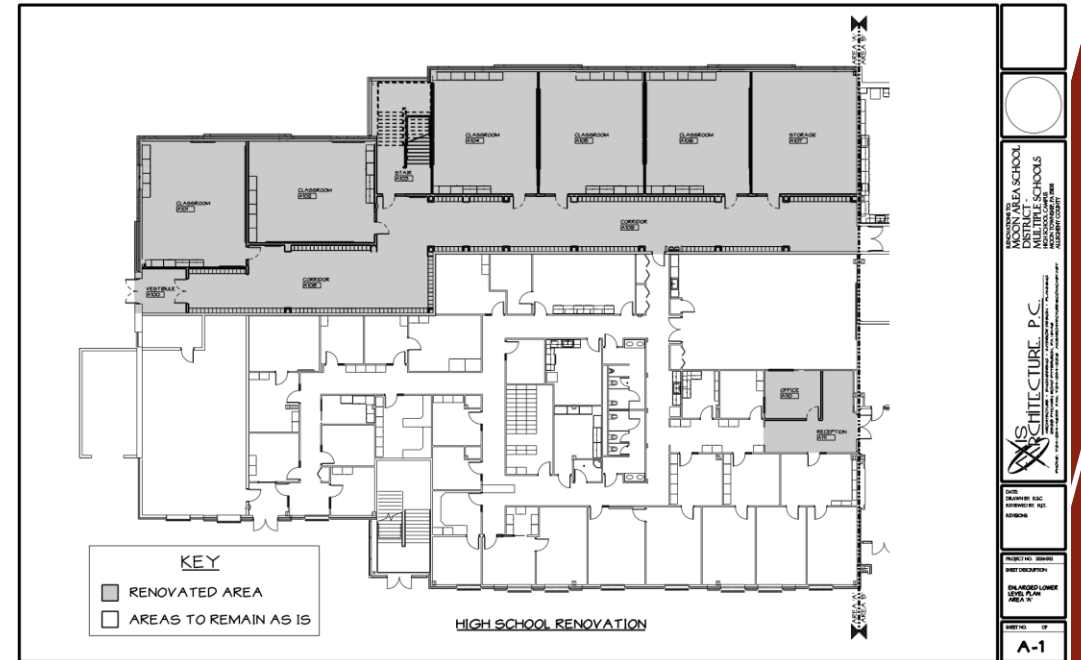
Original Project C

Interior of High School	❖ High school interior alterations for enlarged cafeteria, tech ed, and shops, plus ten (10) new classrooms (does not include equipment)	\$11,700,000
Interior of Middle School	❖ Middle school interior alterations for enlarged cafeteria, alterations for art and tech ed, and six (6) new classrooms	\$5,340,000
CONCEPTUAL TOTAL PROJECT COST:		\$17,040,000



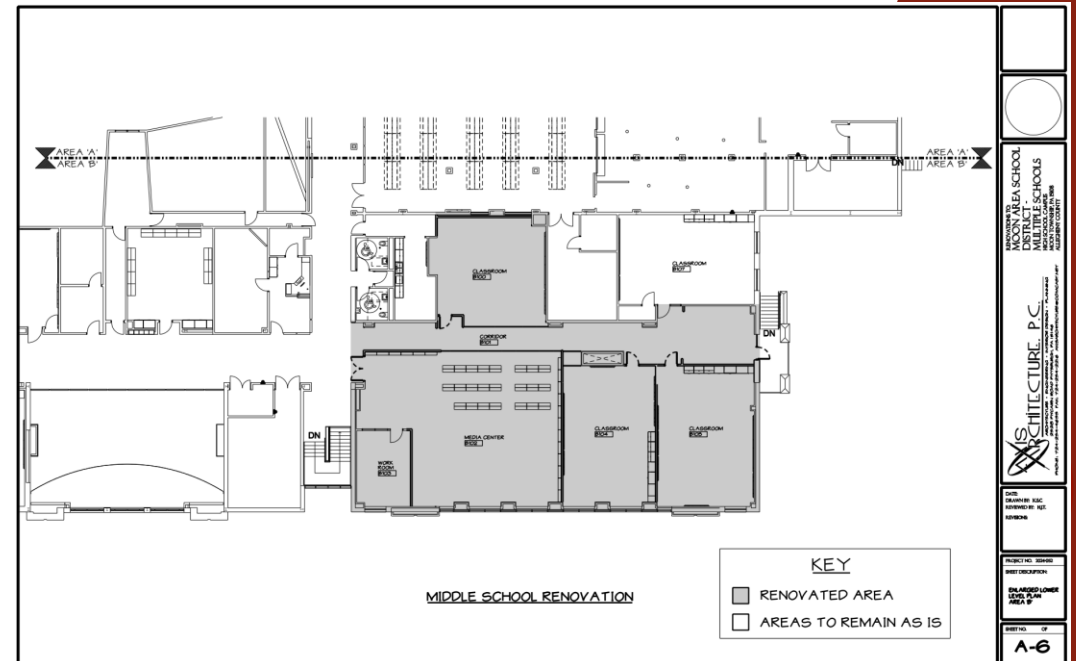
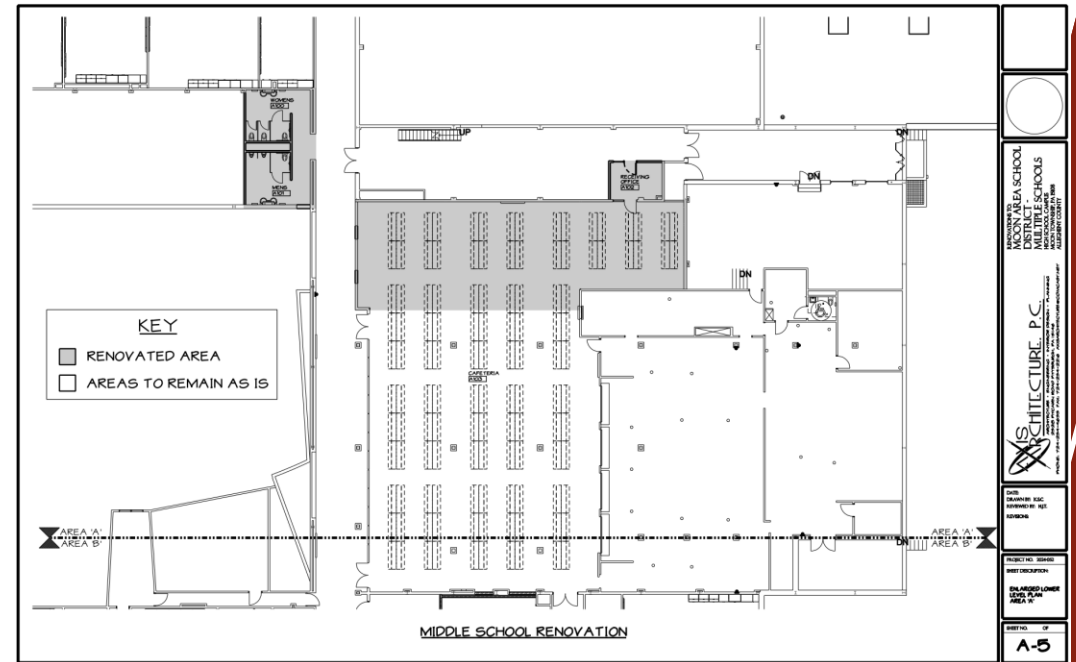
Updated High School Plans

- **Classroom Expansion:** Convert unfinished and storage space behind the district admin office into 6 classrooms, new stair tower, corridor with lockers, vestibule, and exit door, matching existing finishes and systems.
- **Stair Tower Addition:** New stair tower extends through 2nd and 3rd floor workrooms, with modified exterior glass wall and new door system between floors. ADA ramp and sidewalk will improve access to bus staging area.
- **Cafeteria Area Update:** Replace doors to large stair tower, remove steps and platform to increase floor space for additional cafeteria seating and learning areas.
- **Office Space Optimization:** Create registrar office and computer services offices in underutilized areas to enhance space efficiency.



Updated Middle School Plans

- **Cafeteria Expansion:** Enlarge cafeteria by removing adjacent restrooms, storage, and maintenance office, with finishes matching the existing space.
- **Relocated Restrooms:** Move restrooms to the stage mezzanine area across the hall.
- **New Maintenance Office:** Construct a new maintenance office in the existing maintenance corridor.
- **Media Center Reconfiguration:** Convert half of the media center, media classroom, and teachers' lounge into 4 classrooms and a corridor; remaining media center will feature matching finishes, a smaller workroom, and fewer bookshelves.
- **System Updates:** Relocate, add, or replace mechanical, plumbing, fire protection, and electrical systems to support new floor plans.

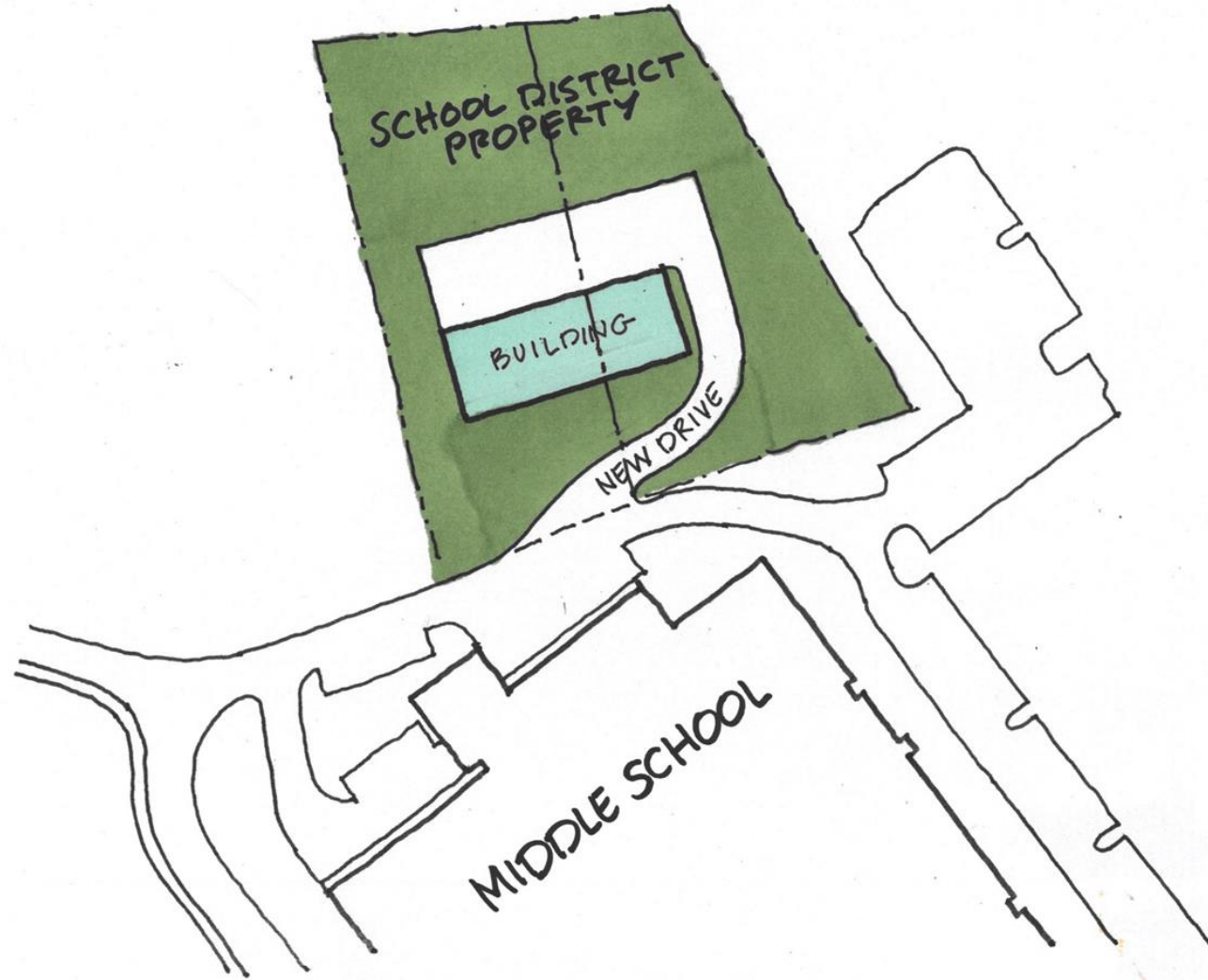


Updated Project C

Interior of High School	❖ New classrooms, stair tower, lockers, vestibule, ADA ramp, sidewalk, door replacements, step & platform removal, additional cafeteria space & learning areas, additional district office space	\$3,425,000
Interior of Middle School	❖ Additional cafeteria space, relocate restrooms, new maintenance office, additional classrooms, updates to mechanical, plumbing, fire protection, and electrical systems	\$2,225,000
CONCEPTUAL TOTAL PROJECT COST:		\$5,650,000



Original Project D Conceptual Drawing

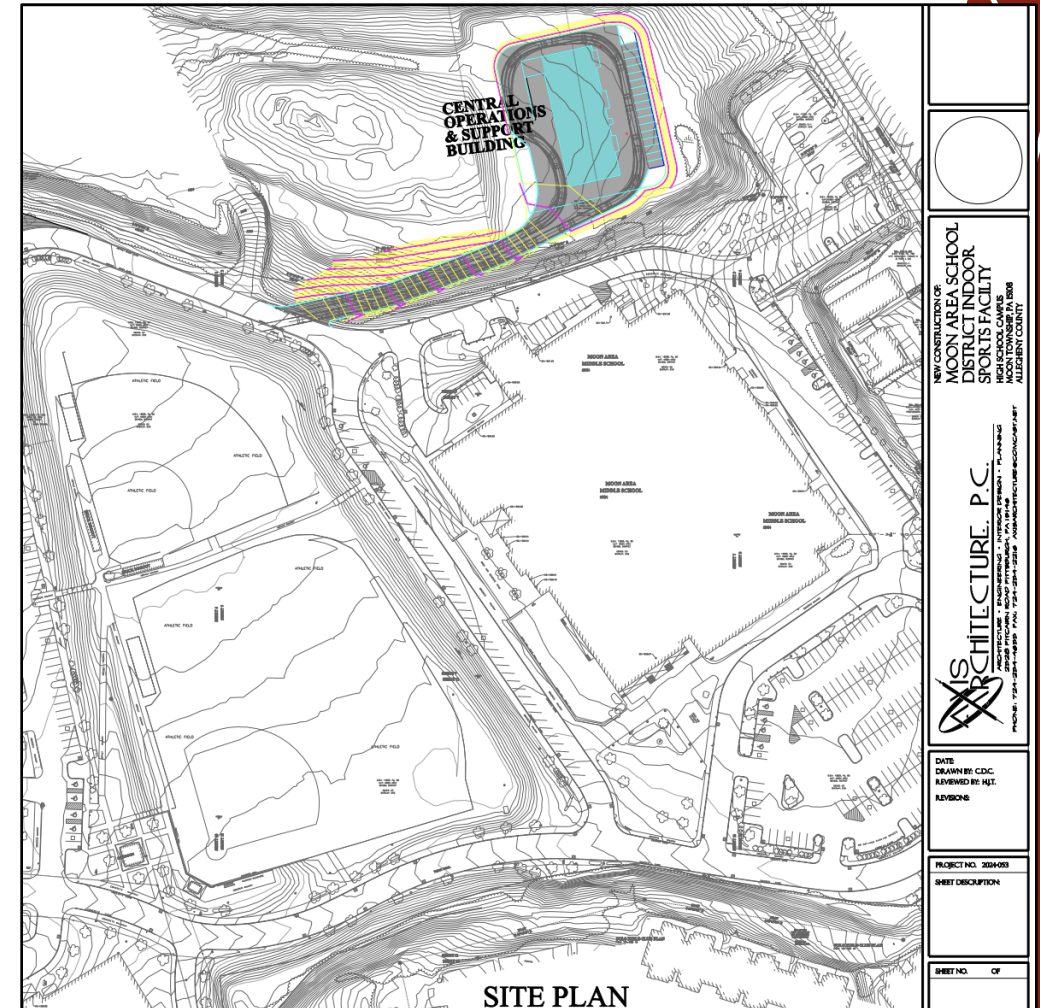


Original Project D

Maintenance Building	❖ New 60 ft. X 160 ft. maintenance building	\$5,000,000
CONCEPTUAL TOTAL PROJECT COST:		\$5,000,000

Updated Central Operations and Receiving

- **New Maintenance Building:** 10,120 SF metal building with concrete slabs, a 1,700 SF mezzanine for mechanical/storage, and an alternate bid for additional mezzanine space.
- **Functional Spaces:** Common area includes office, reception, break area, and restrooms; garage area features vehicle lift and five parking stalls; warehouse with isolated racking system for supplies.
- **Storage Solutions:** Six locker areas with overhead garage doors for school equipment; fenced storage.
- **Building Features:** Exterior with metal panels, concrete block, translucent windows, four overhead garage doors, entry canopies, and loading dock with two dock levelers.
- **Systems & Utilities:** Heating/cooling, CO2 monitoring, fire protection, trench drains, air compressor system, 400 amp service, and future conduit for tennis courts.
- **Security & Communication:** Secure access, cameras, fire alarm, intercom, and communication system installed.
- **Site Work:** Entry drive, paving, additional parking, storm water & utilities, light poles.



Updated Project D

Central Operations and Receiving	❖ New 60 ft. X 160 ft. maintenance building	\$6,100,000
CONCEPTUAL TOTAL PROJECT COST:		\$6,100,000

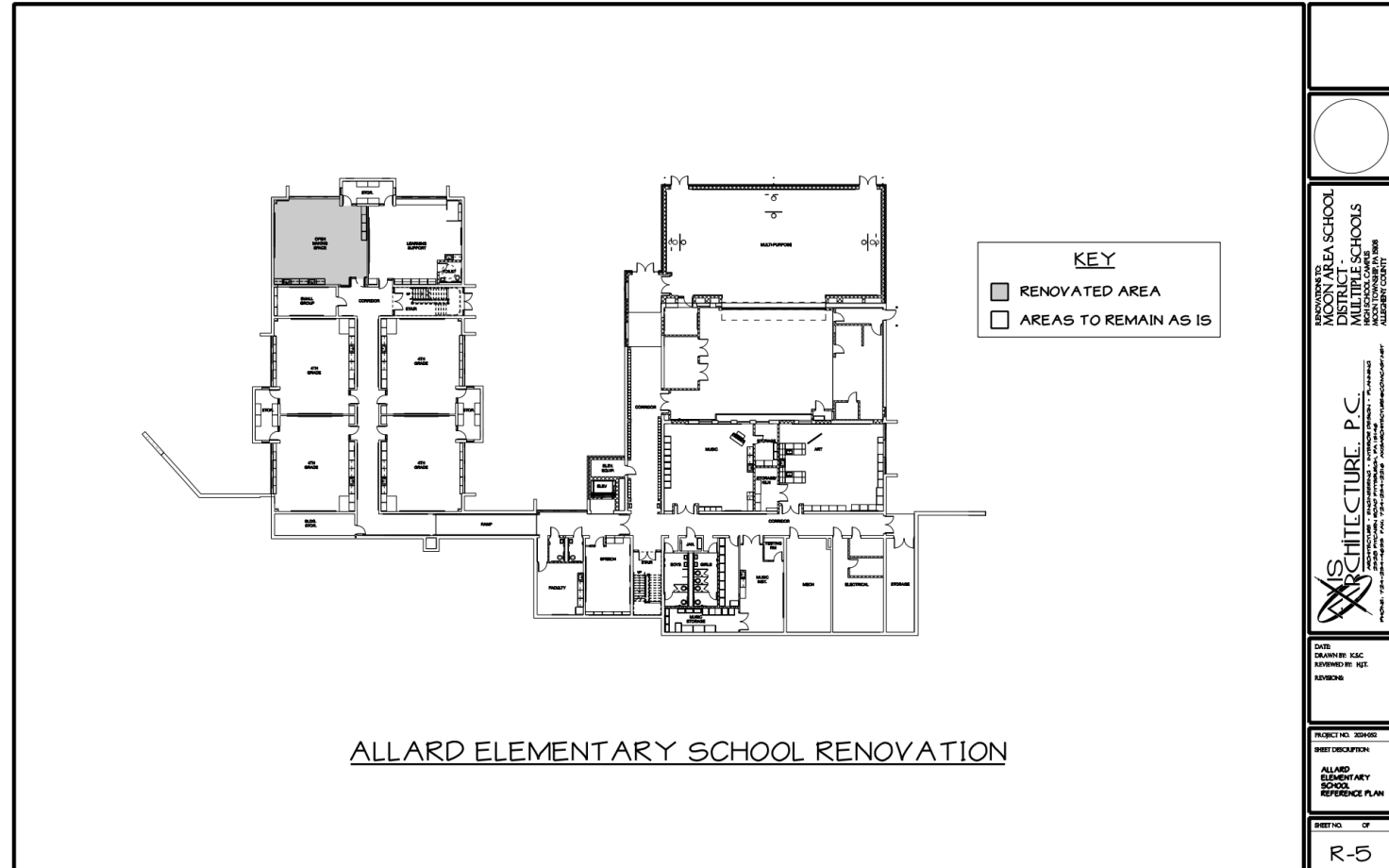
Original Elementary Project

Allard	Minor Alterations (Convert 1 STEAM room to kindergarten)	\$61,750
Bon Meade	No Alterations	\$---
Brooks	Minor Alterations (Alter 3 STEAM rooms into classrooms and remove wall in 1 subdivided classroom)	\$146,250
Hyde	Close Building	\$---
McCormick	No Alterations	\$---
CONCEPTUAL TOTAL PROJECT COST:		\$208,000



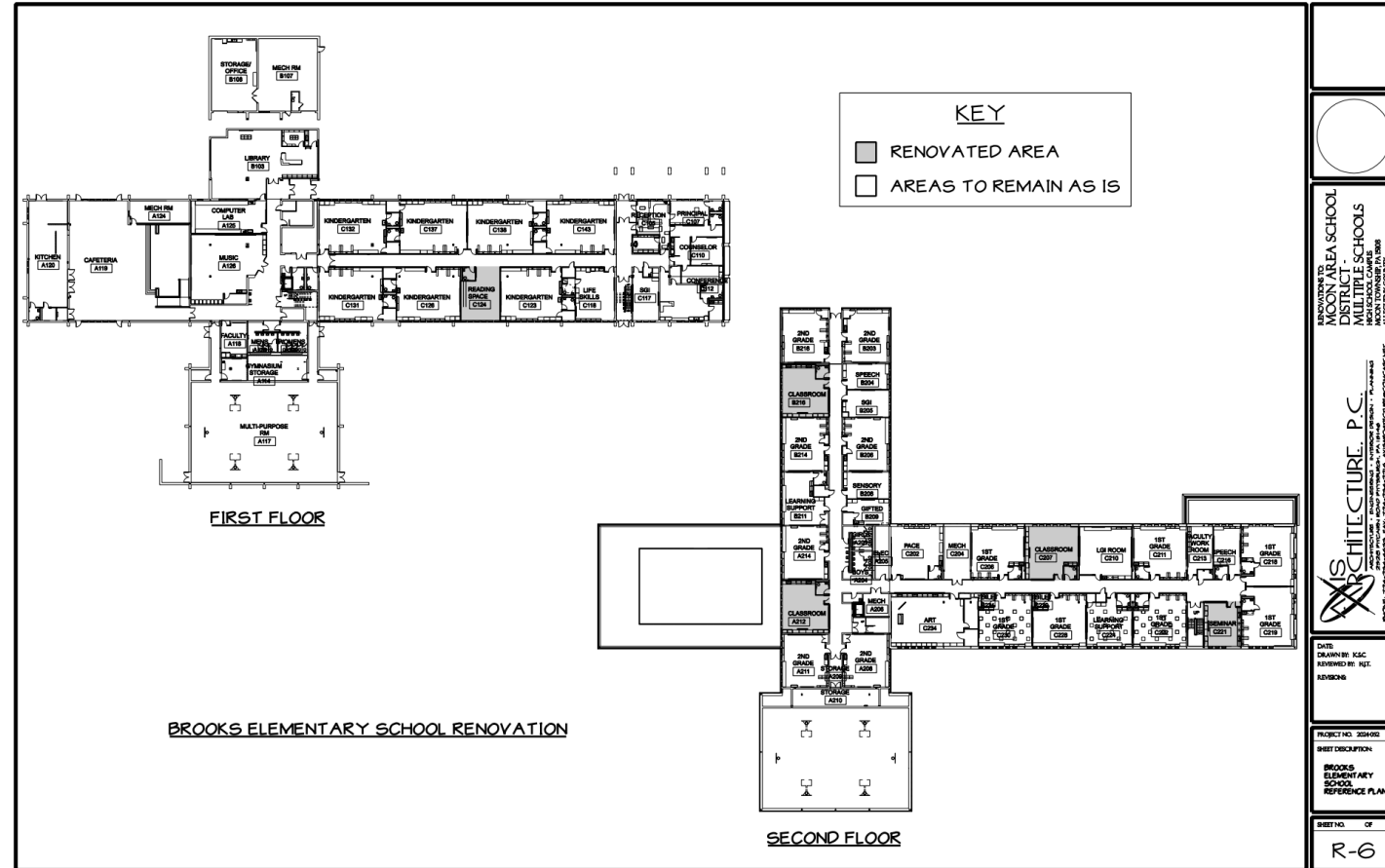
Updated Allard Project

- **1st Floor Maker Space:** Install a new acoustical ceiling with 2x4 lighting to align with other classrooms; add a wall and door to convert it into a traditional classroom.
- **2nd Floor Maker Space:** Enhance lighting and sound control by relocating ceiling panels and lighting from the 1st floor.
- **System Adjustments:** Relocate fire protection, mechanical diffusers, and electrical devices to fit new ceiling layouts.



Updated Brooks Project

- **1st Floor Reading Space:** Remove play equipment, add carpeted bench seating, and repair finishes.
- **2nd Floor Classroom Conversion:** Transform 4 open imagination spaces into 5 traditional classrooms; remove ceiling clouds for new wall construction and repair ceilings in corridors and adjacent classrooms.
- **Technology Integration:** Install power and data for owner-supplied teaching boards in new partitions.
- **System Adjustments:** Relocate fire protection and electrical devices to fit new partitions.



Updated Elementary Project

Allard	Minor Alterations (2 additional classrooms, system upgrades)	\$80,000
Bon Meade	No Alterations	\$---
Brooks	Minor Alterations (5 additional classrooms, technology updates, system upgrades)	\$320,000
Hyde	Close Building	\$---
McCormick	No Alterations	\$---
CONCEPTUAL TOTAL PROJECT COST:		\$400,000

Cost Comparison

Project	Original	Updated	Difference
High School	\$11,700,000	\$3,425,000	- \$8,275,000
Middle School	\$5,340,000	\$2,225,000	- \$3,115,000
Central Operations & Receiving	\$5,000,000	\$6,100,000	+ \$1,100,000
Allard	\$61,750	\$80,000	+ \$18,250
Brooks	\$146,250	\$320,000	+ \$173,750
Total	\$22,248,000	\$12,150,000	- \$10,098,000

