



Lake Elementary School

Alten Construction + Quattrocchi Kwok Architects | Community Meeting October 26, 2021



Design-Build Team

Lake Elementary School Campus Replacement



QUATTROCCHI KWOK
ARCHITECTS

TRADE PARTNERS

CONSULTANTS



GATES
+ASSOCIATES

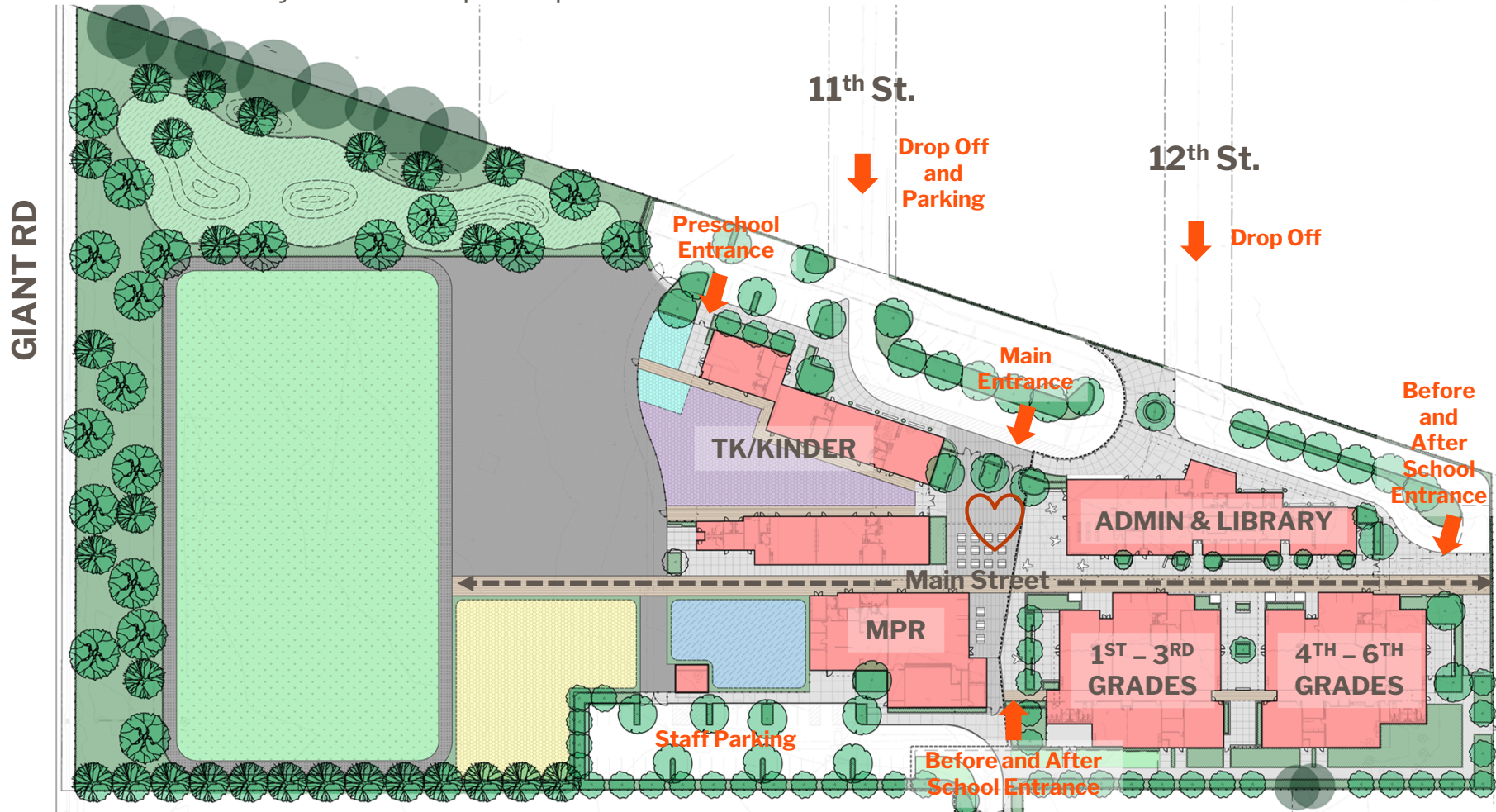
ZFA



October 26th, 2021

Campus Site Plan

Lake Elementary School Campus Replacement



October 26th, 2021

Exterior “Look & Feel”

Lake Elementary School Campus Replacement

Inspired by the natural world, the design weaves colors, patterns and forms of nature into a built environment to strengthen the human-nature connection that we all desire—and need. An awareness of nature helps to inspire, calm and nurture.

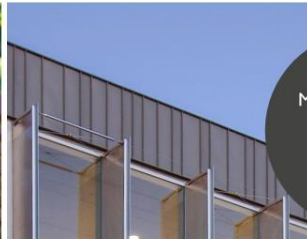


Field Color
Cement Plaster

Accent Color
Cement Plaster
+ Painted Steel
Elements



TREE OF LIFE/EDUCATION = GROWTH + TEXTURE + MOVEMENT



Metal Panel with
Varied Profile
Widths



Graphic Signage: Lake Elementary School's Unique
Identity, School Pride, Mission & Core Values



PROPOSED MATERIALS & COLOR PALETTE



Accent Color
Signature Canopy
Elements

Accent Color
Smooth Finish
Cement Plaster

BUTTERFLY= TRANSFORMATION + CREATIVITY + CHANGE + JOY + BEAUTY + ASPIRATION



NATURAL PROCESS = CIRCADIAN RHYTHM + TIME AWARENESS + EVOLUTION

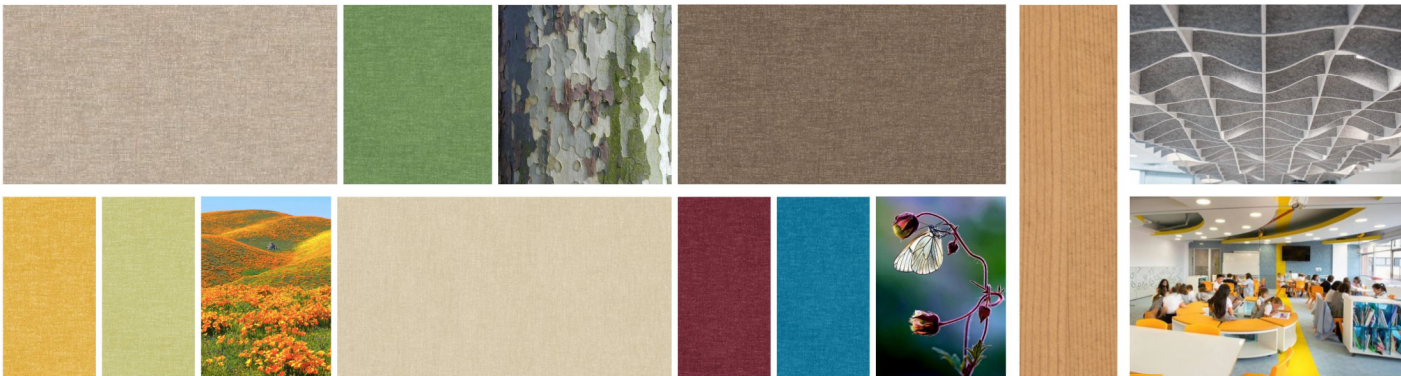
October 26th, 2021

Interior “Look & Feel”

Lake Elementary School Campus Replacement



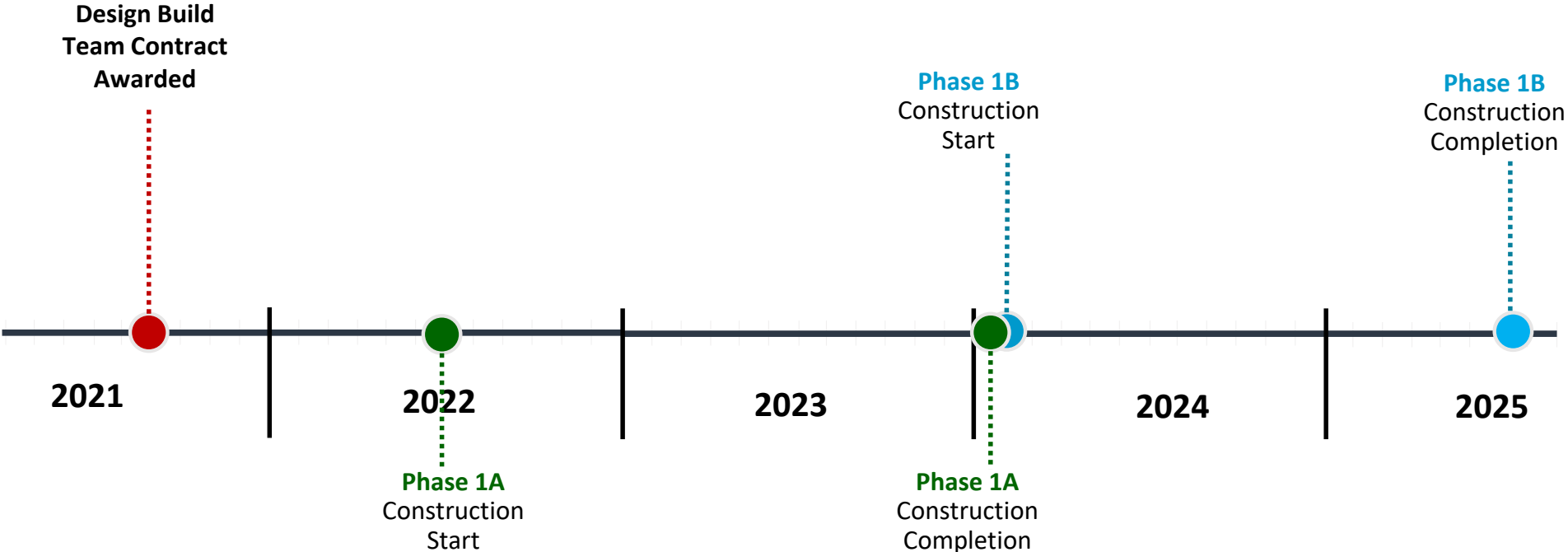
LINK TO INTERACTIVE 3D VIEW



October 26th, 2021

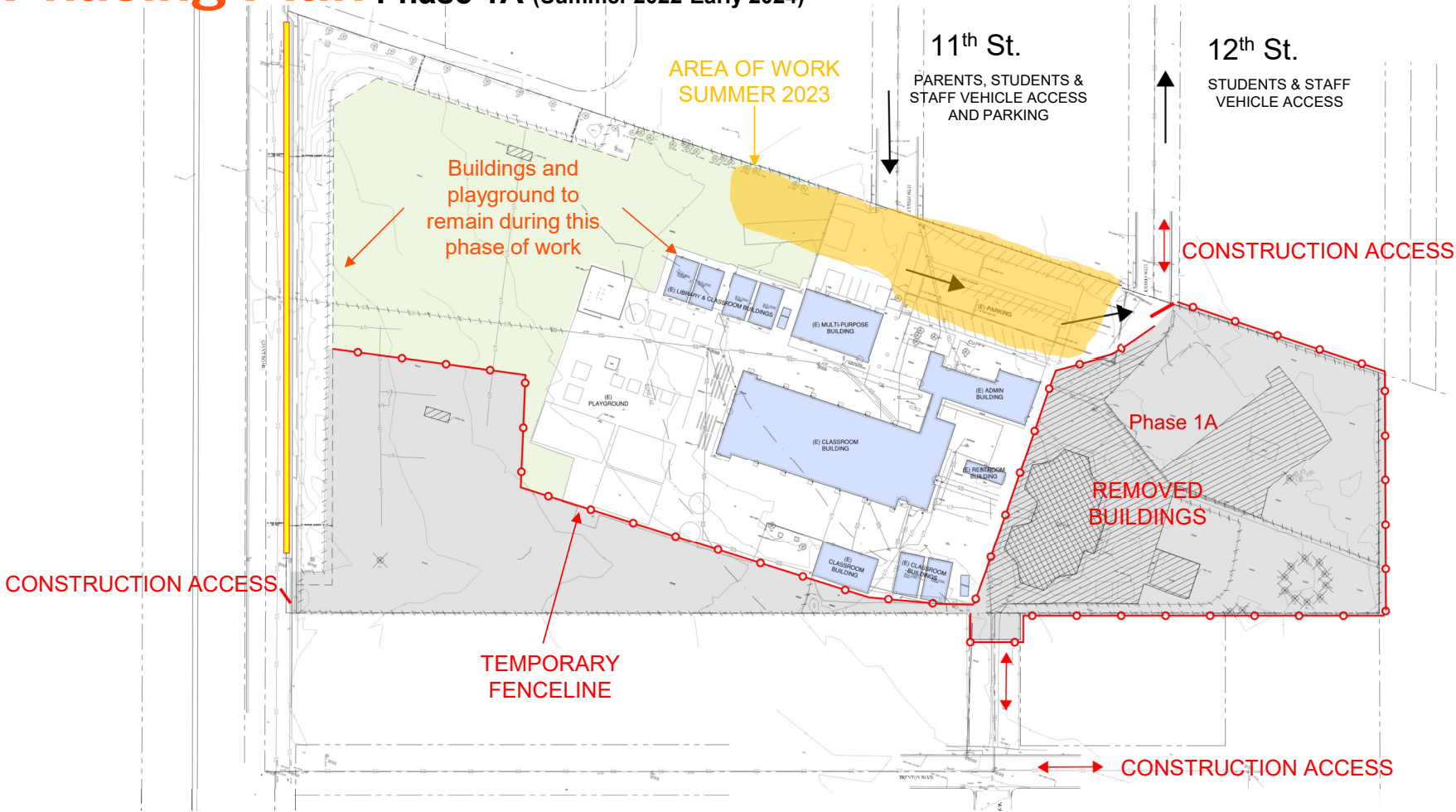
Project Schedule

Lake Elementary School Campus Replacement



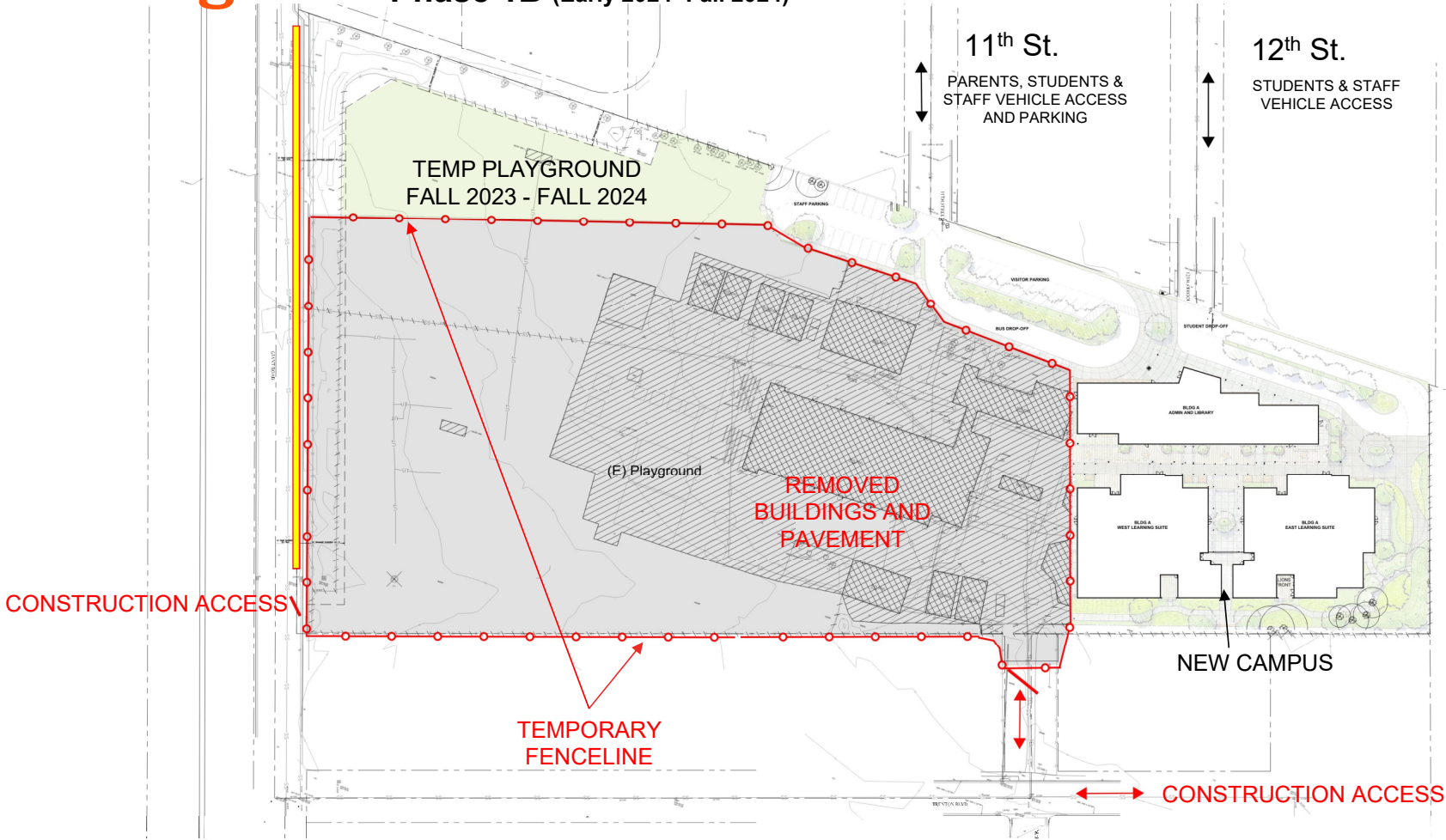
October 26th, 2021

Phasing Plan Phase 1A (Summer 2022-Early 2024)



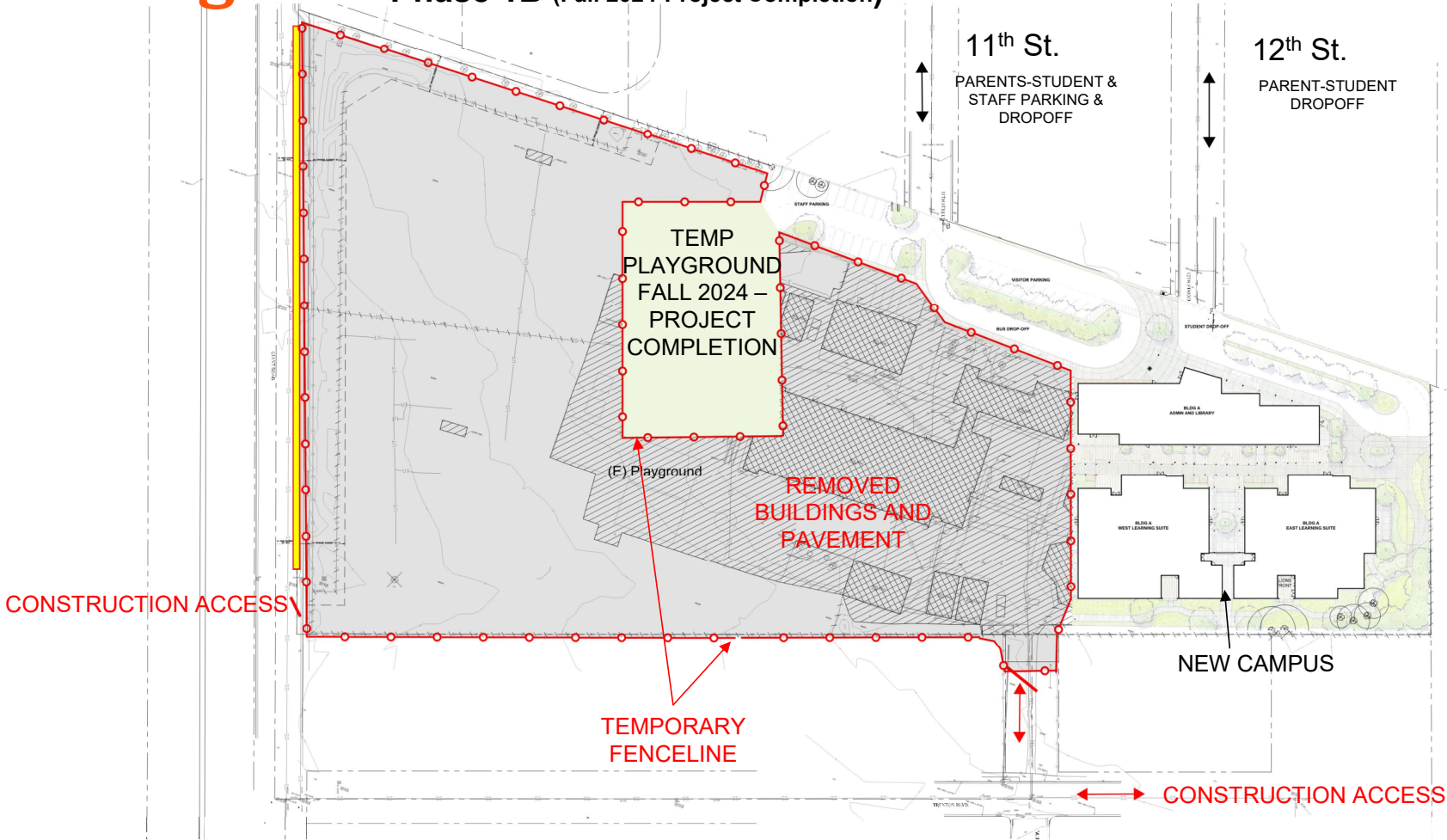
October 26th, 2021

Phasing Plan Phase 1B (Early 2024- Fall 2024)



October 26th, 2021

Phasing Plan Phase 1B (Fall 2024-Project Completion)



October 26th, 2021

Inclusive Design Restroom

Lake Elementary School Campus Replacement

- An inclusive restroom/bathroom is **one that anyone can use.** These restrooms can benefit many different people, including parents with children, trans and gender nonconforming people, or people who simply would prefer additional privacy.





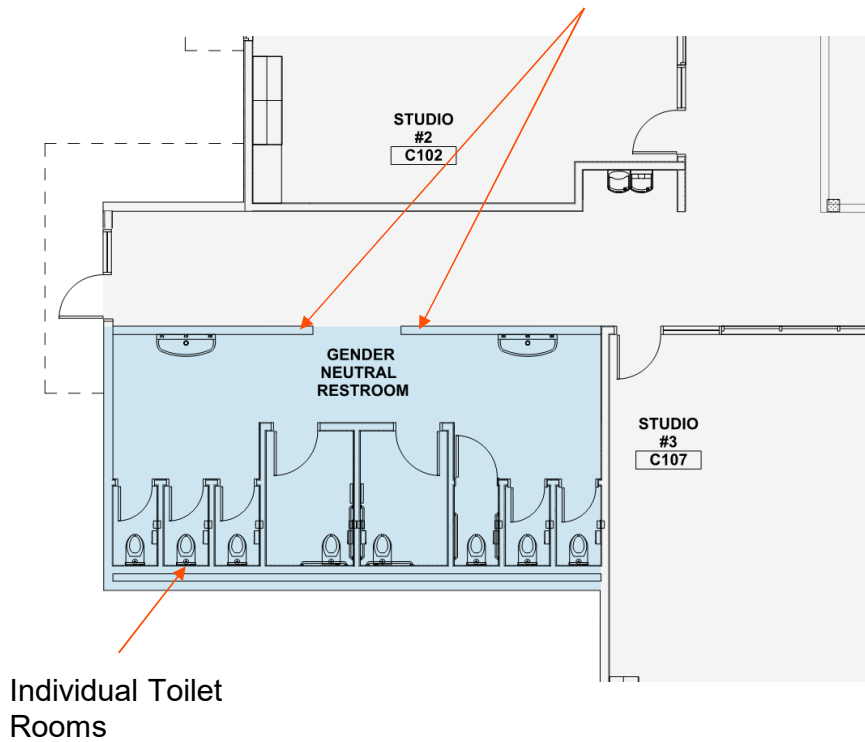
Inclusive Design Restroom

Lake Elementary School Campus Replacement

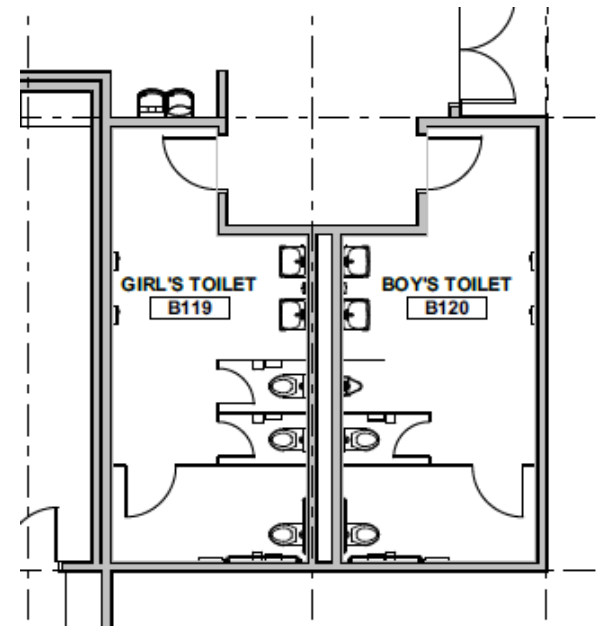


Inclusive and Traditional Design

Low Wall with Sinks



Inclusive Design

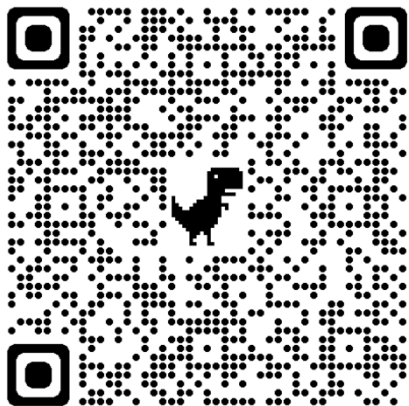


Traditional Design

Feedback

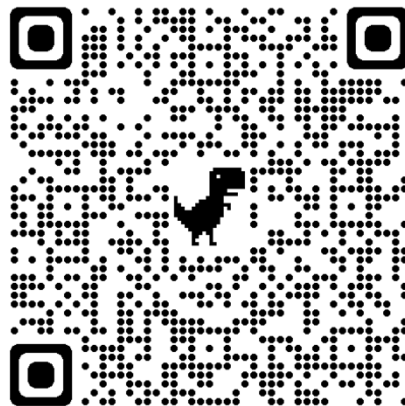
Let us know what you think about the proposed design

English Survey

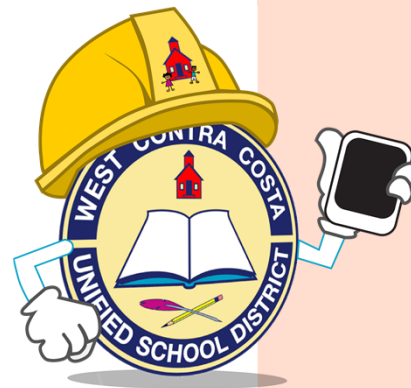


<https://bit.ly/3Bizwil>

Encuesta en español



<https://bit.ly/3pEc8u1>



To stay up to date on the project.

Additional information can be found at the project website.

<https://www.wccusd.net/site/default.aspx?PageID=15892>



October 26th, 2021