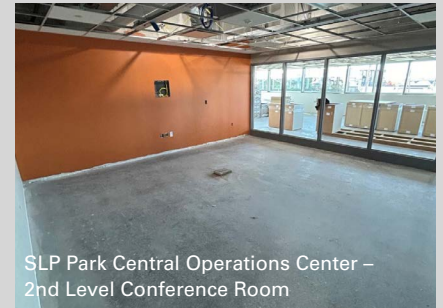


# IN THE LOOP

ST. LOUIS PARK SCHOOLS



SLP Central Community Center – Locker Room



SLP Park Central Operations Center –  
2nd Level Conference Room



SLP Maintenance Building –  
10Ton Reuse Irrigation Tank System  
Location (Underground)



SLP Park Central Operations Center –  
Generator and Transformer Enclosure



SLP Park Central Operations Center –  
2nd Level Open Office Space

## Project Milestones

- 10.11.24 – SLP Park Central Operations Center MEP Rough Ins Completed.
- 10.25.24 – SLP Central Community Center Locker Room Underground Plumbing Completed.
- 10.30.24 – SLP Central Community Center Lock Room Concrete Floor Poured.
- 10.31.24 – SLP Park Central Operations Center Reuse Irrigation System Install Completed.

## Construction Progress

### Park Central Operations Center

- Construction Duration: 12/2023 – 12/2024
- MEP Finishes have begun.
- Generator and Transformer Enclosure is 75% complete.
- ACT grid install is 100% complete.
- Garage Door install has begun

### SLP Central Community Center

- Construction Duration: 7/2024 – 8/2025
- SLP Central Pool MEP demolition is 85% complete.
- SLP Central lock room demolition is 100% complete.

## Fun Facts

The new Central locker rooms will have over 160 new lockers. The total length of all lockers is the equivalent distance of over 15 swimming pools!