

2018 Bond – Update

12/7/2022 CBOC
1/4/2023 BOE

- Community Bond Oversight Committee Update
- Cash Flow / Budget / Encumbrances
- By Feeder Budget Status
- Large Project Updates



2018 Bond – Update

12/7/2022 CBOC
1/4/2023 BOE

Strive 2025 Alignment

Focus Area 2: Inclusive and Supportive Culture

2.4 Ensure all facilities are welcoming, safe, inclusive, and meet the needs of students, staff and community

Focus Area 4: Stewardship of Resources

4.3 Provide transparency in the use of district resources

UPDATE: Provides financial information regarding the planning for use of and the expenditures of community approved bond funds. Demonstrates visually that the funding has been used to support education and provide welcoming and inclusive facilities.



Citizens' Bond Oversight Committee

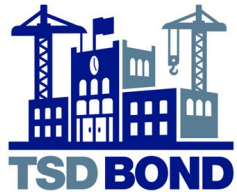
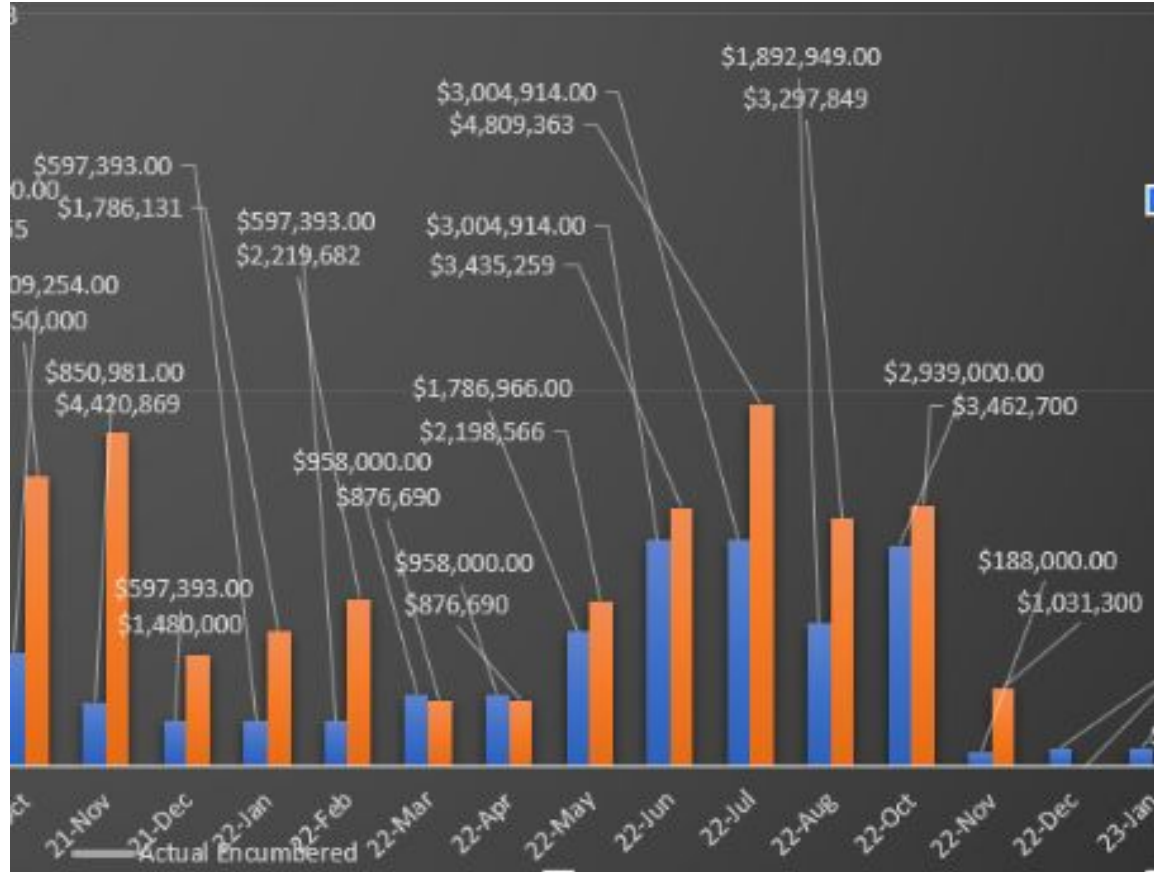
- CBOC presented to the BOE in October.
- 5 members are due for reappointment or replacement in February. Process will be implemented this month with BOE as appropriate.
- Staff attended the Berthoud and Loveland Rotary Meetings this fall.
- CBOC continues to review cash flow, project status, and planning efforts for 2023 in great detail.

Cash Flow

2018 Bond Program
 Dec. 7, 2022- Cash Flow Projected/Actual

Total Projected Spent \$172,236,000
 Actual Spent \$178,140,000
(Projected Above Actual in Graph)

Projected
 Actual



Total Bond - Encumbrances

Feeder <input type="checkbox"/>	Total Bond Budget	Total Amount Encumbered
<input type="checkbox"/> BHS	\$18,426,733.91	\$18,040,903.96
<input type="checkbox"/> DW	\$42,208,811.96	\$33,493,610.10
<input type="checkbox"/> LHS	\$23,880,532.30	\$21,896,192.92
<input type="checkbox"/> MVHS	\$84,591,311.78	\$83,193,219.30
<input type="checkbox"/> TVHS	\$39,063,001.42	\$38,717,097.80
Grand Total	\$208,170,391.37	\$195,341,024.08

*September Update: Budget \$207.6mil. Encumbered \$193.8mil



Berthoud High School - Feeder

Location	Total Bond Budget	Amount Encumbered	Total Payments
Berthoud HS	\$ 6,012,620	\$ 6,007,826	\$ 5,890,998
Turner MS	\$ 2,889,124	\$ 2,848,725	\$ 2,846,097
Berthoud ES	\$ 5,181,926	\$ 4,891,529	\$ 4,863,733
Ivy Stockwell ES	\$ 4,343,064	\$ 4,292,823	\$ 4,292,265
	\$ 18,426,733.91	\$ 18,040,903.96	\$ 17,893,092.75

Loveland High School - Feeder

Location	Total Bond Budget	Amount Encumbered	Total Payments
Loveland High School	\$ 7,567,643	\$ 7,567,638	\$ 7,456,589
Bill Reed Middle School	\$ 2,984,778	\$ 2,960,072	\$ 2,927,125
Lucile Erwin Middle School	\$ 2,592,600	\$ 2,591,811	\$ 2,013,480
Centennial Elementary School	\$ 1,280,807	\$ 1,275,121	\$ 1,092,559
Cottonwood Elementary School	\$ 1,235,505	\$ 650,380	\$ 403,939
Coyote Ridge Elementary School	\$ 847,114	\$ 217,388	\$ 108,017
Garfield Elementary	\$ 1,578,794	\$ 1,534,671	\$ 1,527,420
L. Edmondson Elementary/ECE	\$ 1,936,278	\$ 1,861,995	\$ 1,704,046
Lincoln Elementary School	\$ 1,239,488	\$ 1,203,899	\$ 1,199,736
Ponderosa Elementary School	\$ 946,421	\$ 381,575	\$ 292,617
Truscott Elementary School	\$ 1,671,108	\$ 1,651,645	\$ 1,544,705
	\$ 23,880,532.30	\$ 21,896,192.92	\$ 20,270,232.74

Mountain View High School - Feeder

Location	Total Bond Budget	Amount Encumbered	Total Payments
Mountain View High School	\$ 6,073,465	\$ 5,962,669	\$ 5,929,356
Conrad Ball Middle School	\$ 25,129,603	\$ 24,233,279	\$ 8,438,988
High Plains	\$ 107,205	\$ 15,183	\$ 12,683
Mary Blair Elementary School	\$ 193,874	\$ 131,336	\$ 128,836
Monroe Elementary School/ECE	\$ 1,583,871	\$ 1,453,236	\$ 1,453,236
Stansberry Elementary School	\$ 6,749,282	\$ 6,742,797	\$ 6,742,797
Winona Elementary School	\$ 1,168,328	\$ 1,130,828	\$ 1,130,828
New PK8	\$ 43,585,684	\$ 43,523,891	\$ 43,451,601
	\$ 84,591,311.78	\$ 83,193,219.30	\$ 67,288,324.97

Thompson Valley High School - Feeder

Location	Total Bond Budget	Amount Encumbered	Total Payments
Thompson Valley High School	\$ 9,518,243	\$ 9,483,484	\$ 8,940,681
Walt Clark Middle School	\$ 3,468,548	\$ 3,383,833	\$ 3,321,565
BF Kitchen Elementary	\$ 1,998,219	\$ 1,878,853	\$ 1,858,073
Big Thompson Elementary School	\$ 1,739,668	\$ 1,685,871	\$ 1,571,847
Carrie Martin Elementary	\$ 1,132,562	\$ 1,123,985	\$ 1,104,985
Namaqua Elementary School	\$ 1,377,141	\$ 1,368,353	\$ 1,358,481
Sarah Milner Elementary School	\$ 1,147,444	\$ 1,111,541	\$ 1,106,456
Van Buren Elementary School	\$ 18,681,178	\$ 18,681,178	\$ 18,681,178
	\$ 39,063,001.42	\$ 38,717,097.80	\$ 37,943,265.79

District Wide - Summary

Location	Total Bond Budget	Amount Encumbered	Total Payments
Ferguson High School	\$ 915,728	\$ 445,723	\$ 408,424
Charter Schools	\$ 1,300,000	\$ 1,300,000	\$ 1,300,000
Bond Contingency	\$ 4,439,500	\$ -	\$ -
Bond Inflation	\$ 934,225	\$ -	\$ -
Bond Management	\$ 3,993,916	\$ 3,008,254	\$ 2,936,699
Environmental	\$ 164,971	\$ 163,512	\$ 163,512
Support Buildings/DW Projects/IT	\$ 7,574,282	\$ 7,186,128	\$ 7,052,186
Community Connections	\$ 386,297	\$ 127,390	\$ 127,390
Security	\$ 5,637,000	\$ 5,622,965	\$ 5,593,900
Roofing	\$ 11,735,394	\$ 11,735,394	\$ 11,735,394
DW Furniture	\$ 5,127,500	\$ 3,904,243	\$ 3,752,406
	\$ 42,208,811.96	\$ 33,493,610.10	\$ 33,069,910.74

Large Project Update

2023 Major Renovations: Cottonwood Plains ES (\$1.2m), Coyote Ridge ES (\$850k), Ponderosa ES (\$950k)

- GMP received before the Holiday Break

2023 FF&E: Carrie Martin ES, Namaqua ES, Coyote Ridge ES, Lincoln ES, Ponderosa ES, High Plains and Conrad Ball MS

- ✓ Conrad Ball MS Renovation to “Peakview Academy at Conrad Ball”
 - Incorporating the name, colors, and mascot
- ✓ High Plains PK8 - Addition (*LURA/TIFF Funding*)

CBMS Reno

- *Main Entry
- *Temp Office/ Nurse

Current Activities:

- Music room steel being installed
- Polished concrete in hallways
- Bathroom ceiling drywall abatement
- Backfilling the media center / prek area
- Underground plumbing rough in for media center expansion
- Framing complete in admin - door frame installation underway
- Block install at auxiliary gym
- Playground Grant Awarded! Colorado Health Foundation for \$700k
- Staff tours before the holiday break



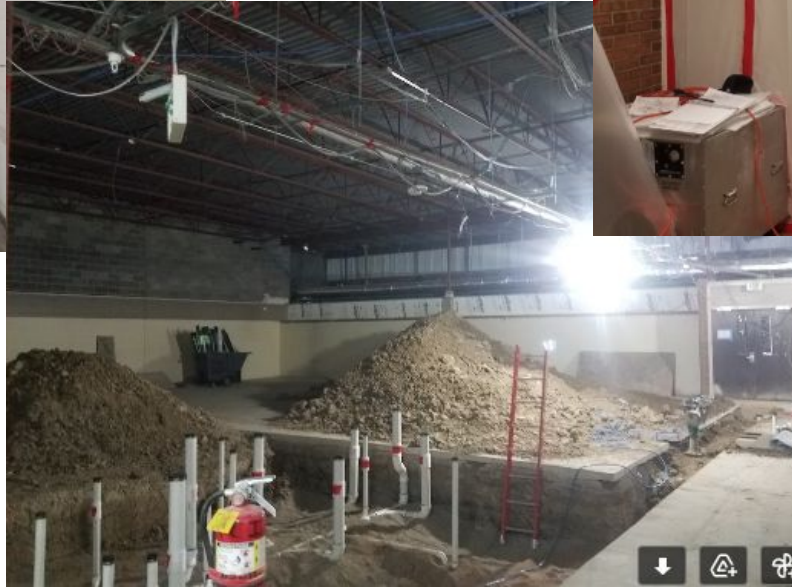
CBMS to “Peakview Academy at Conrad Ball”



Below:
Underground
plumbing for
new restroom
group



Above: Ductwork for
HVAC system



Above: Abatement
containment set up for
bathroom demolition

CBMS to “Peakview Academy at Conrad Ball”

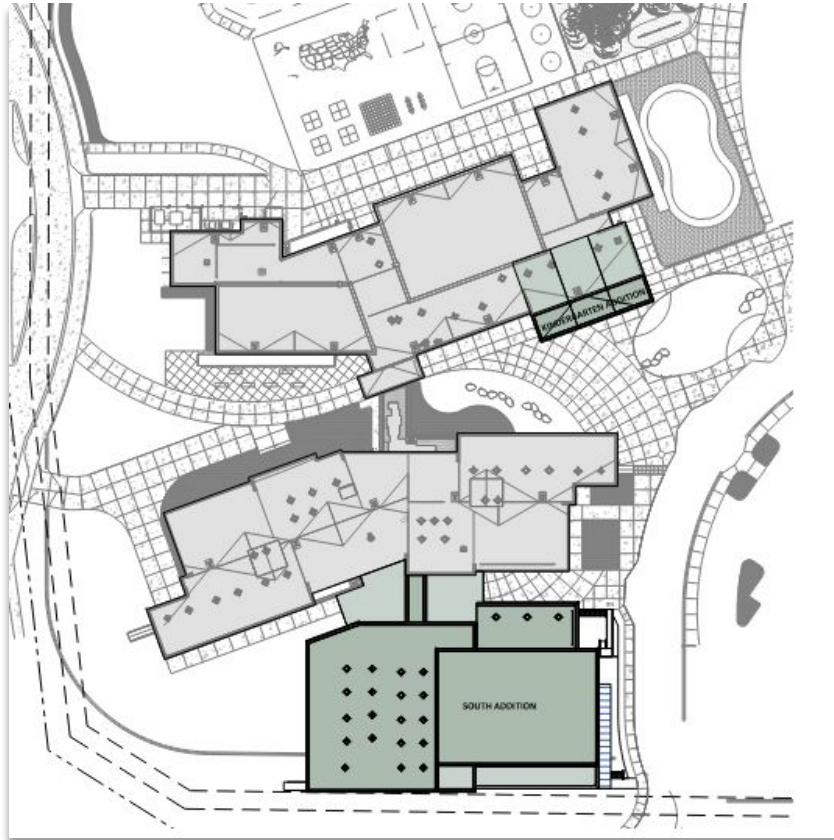


Above: Media center foundation wall

Below: Brick veneer demolition in preparation for auxiliary gym expansion



High Plains PK8 - Additions



Current Activities:

- Music room steel being installed, decking to follow
- 2nd floor concrete deck was poured
- 1st floor interior framing currently underway
- Exterior framing started in December
- Overhead MEP rough in on first floor
- Stair delivery in December
- CMU infill at south side of gym
- CMU at west wall of music room
- Joist/deck at the gym/roof scheduled for 12/21

December 8th: 2:30pm - Topping Out Ceremony.

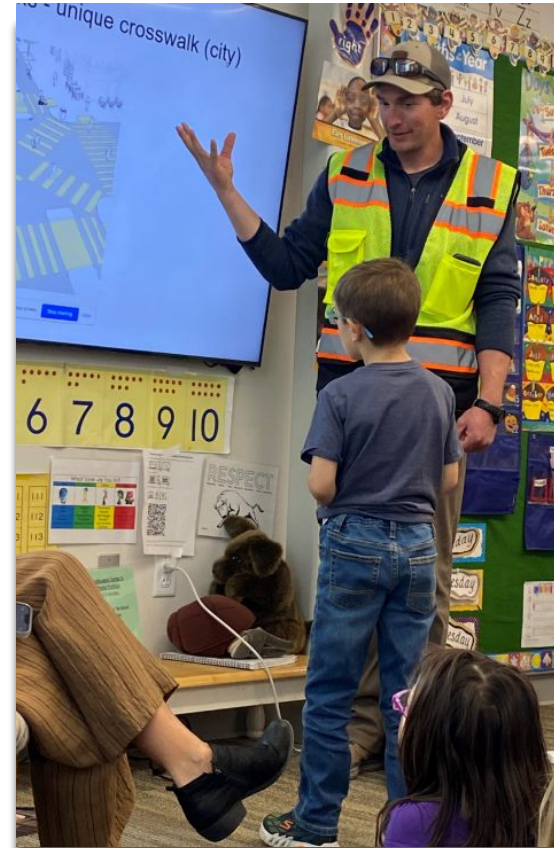
High Plains PK8 - Topping Out

- Beam signed by staff, students, community at temporary location
- Short Ceremony with some history of the event by FCI Constructors, Inc.
- Thank you by principal Danielle Feeney
- Attended by the student body



High Plains PK8 - Addition

KG Presentation on Crosswalk Safety



High Plains PK8 - Addition

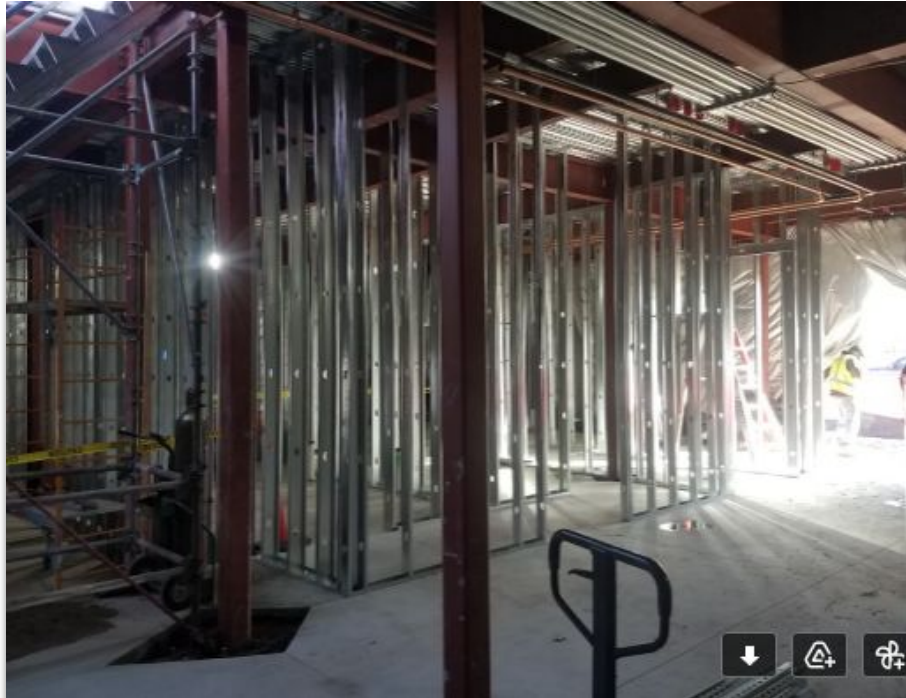


Above: East wall of Gym Addition

Below: Gym bathroom group framing layout



High Plains PK8 - Addition



Above: First floor classroom wall framing

Below: Gym trusses set and ready for joists



Thank You Veterans!

