

PASADENA UNIFIED SCHOOL DISTRICT  
2024-2025 DEPARTMENT PLAN

---

**Department Name:** Early Childhood Education

**Department Contact:** Lindsay Lewis

**Contact Email:** lewis.lindsay@pusd.us

**Contact Phone:** 626-396-5762

Report Last Generated: Oct 23 2024 @ 17:07:50 (PDT)

---

### **Department Purpose**

*What does the department do?*

Operate all of the preschool programs for PUSD by providing curriculum, assessment, and instructional strategies for the teachers.

### **Department Services**

*What is a general list of services that your department provides?*

Plan, support, assess, and enroll eligible students, ages 3-5, in preschool programs both half-day and full-day including embedded instruction inclusion half-day.

### **Total Department Budget**

*What is your department's total budget?*

The total department budget is \$8.13 million from the state contract .

Note:

100% of the state contracted budget is restricted for subsidized preschool students.

PASADENA UNIFIED SCHOOL DISTRICT  
2024-2025 DEPARTMENT PLAN

---

**Prior Year Reflection**

*This section of the department plan reviews the intent of prior department plans and the successes/challenges encountered while implementing the planned actions. This portion of the plan summarizes key learnings that inform the planning for the current year.*

**Prior Year Intended Outcomes**

*What did your department plan set out to achieve during the prior year?*

Provide access for all eligible 3-5 year old students to our preschool programs. Allow intentional professional development for all staff throughout the year. Be prompt in responding to all parents questions and requests. Grow enrollment by promoting and advertising throughout the community. Partner with community organizations to outreach and learn about supports that can benefit mental health support, special needs wrap-around care, and medical resources.

**Prior Year Achievement**

*Did the department achieve what it had outlined? How do you know?*

The Department of Early Childhood Education (ECE) is actively involved in initiatives aimed at improving accessibility for preschool students. The school district is dedicated to expanding the preschool program to offer enriching educational options to numerous families. This is done by continuously modifying its curriculum to support language and literacy skills and creating an inclusive learning environment that supports children's development, relationships with peers, and a sense of belonging.

**Prior Year Successes, Challenges, and Learnings**

*What successes, challenges, and learnings should be highlighted from the prior year?*

Successes within our department include the inclusion of Haggerty to help build young children's literacy skills, upgrading our Creative Curriculum to the latest version to include new methods to help teachers interact with children in ways that promote development and learning, foster children's social competence, support children's learning through play, create rich environments for learning, and forge strong home-school connections. Challenges within the department are not having enough assistants to fully enroll preschool classrooms to their approved capacity and lack of advertising for the preschool program to help it grow.

PASADENA UNIFIED SCHOOL DISTRICT  
2024-2025 DEPARTMENT PLAN

---

**Current Year Priorities**

*This section of the department plan provides a summary of the identified needs that are prioritized for informing the department plan's actions for the current year.*

**Data and Information Used for Plan Development**

*What data did you consider when developing this plan?*

Students' assessments; Desired Results Developmental Profile (DRDP)  
Program attendance  
Inclusivity  
Program self reflection

**Stakeholder Engagement/Input**

*What stakeholder engagement or information was used to inform this plan?*

Guidance from California State Preschool Program (CSPP)  
PAC meetings and Community Input  
Collaboration with the Department of Special Education

**Key Data Findings/Information for This Plan**

*Based on data analysis and stakeholder information, what key data findings are considered in the development of this plan?*

Collaboration among different departments to help grow the program and offer a wide range of services for eligible children who are three to five years of age. Bridge partnerships with TK and Kindergarten teachers to prepare children for the social and academic challenges ahead.

**Current Plan Priorities**

*Based on the key data findings, what needs emerged from your Department's root cause analysis, and which of these needs are given priority for this planning cycle?*

Early childhood education (ECE) plays a vital role in children's development. It provides a strong foundation for later academic, social, and emotional growth. In order for our department to continue to flourish, proper staffing is needed to better engage children in daily activities. Being provided with age appropriate classrooms that feel welcoming and engaging for young learners are also needed.

PASADENA UNIFIED SCHOOL DISTRICT  
2024-2025 DEPARTMENT PLAN

---

Growth of the program and collaboration with the Special Education department to create an inclusive learning environment. Proper staffing to ensure classrooms are being enrolled to their maximum capacity.

PASADENA UNIFIED SCHOOL DISTRICT  
2024-2025 DEPARTMENT PLAN

---

**Current Year Planned Actions and Metrics**

*This section of the department plan provides a summary of the planned actions that address the identified priorities based on data analysis and stakeholder input. Metrics associated with monitoring and/or evaluating the effectiveness of the planned actions are summarized in this section.*

*What action could you take to address the identified needs of your department?*

*What would you be able to monitor throughout the year (quarterly or more than twice per year) to know that your actions are creating a change?*

**Theory Of Action**

**If we...** Hire additional staff to increase enrollment and meet the needs of children

**then...** Reduce teacher workload to focus on teaching and developing relationships with students. Grow the program to meet funding and other requirements.

**which will...** Staffing

**If we...** supports children's development, relationships with peers, and a sense of belonging.

**then...** Enhance social skills, improved academic performance, friendship, collaborative partnerships, academic success.

**which will...** Inclusivity

**If we...** In helping to meet a broad range of student needs, collaboration in special education also provides greater opportunity for catering to individual skills and abilities.

**then...** enhances learning outcomes and support, collaboration and wellbeing for the entire school and ECE department.

**which will...** Collaboration

PASADENA UNIFIED SCHOOL DISTRICT  
2024-2025 DEPARTMENT PLAN

---

<b>If we...</b>	Create a unique and inviting preschool environment that is not bland
<b>then...</b>	Contract earning, job stability
<b>which will...</b>	Growth
<b>If we...</b>	Offer a variety of stimulating and age-appropriate activities to help encourage creativity and learning in their students.
<b>then...</b>	children build a strong foundation in social, pre-academic, and general life skills that will give them a leg up in school and beyond.
<b>which will...</b>	Quality

PASADENA UNIFIED SCHOOL DISTRICT  
2024-2025 DEPARTMENT PLAN

---

**Priority 1: Staffing**

[Action 1]

Hire additional staff to increase enrollment and meet the needs of children

Metrics

- a. Monthly. Continue to post positions and hire necessary staff until all needs are met.

**Priority 2: Inclusivity**

[Action 1]

supports children's development, relationships with peers, and a sense of belonging.

Metrics

- a. Monthly. Continue to work with special education team to support students who need extra help and provide resources for all staff.

**Priority 3: Collaboration**

[Action 1]

In helping to meet a broad range of student needs, collaboration in special education also provides greater opportunity for catering to individual skills and abilities.

Metrics

- a. All year. Meetings, trainings, communication and program reflection

**Priority 4: Growth**

[Action 1]

Create a unique and inviting preschool environment that is not bland

**Priority 5: Quality**

[Action 1]

Offer a variety of stimulating and age-appropriate activities to help encourage creativity and learning in their students.

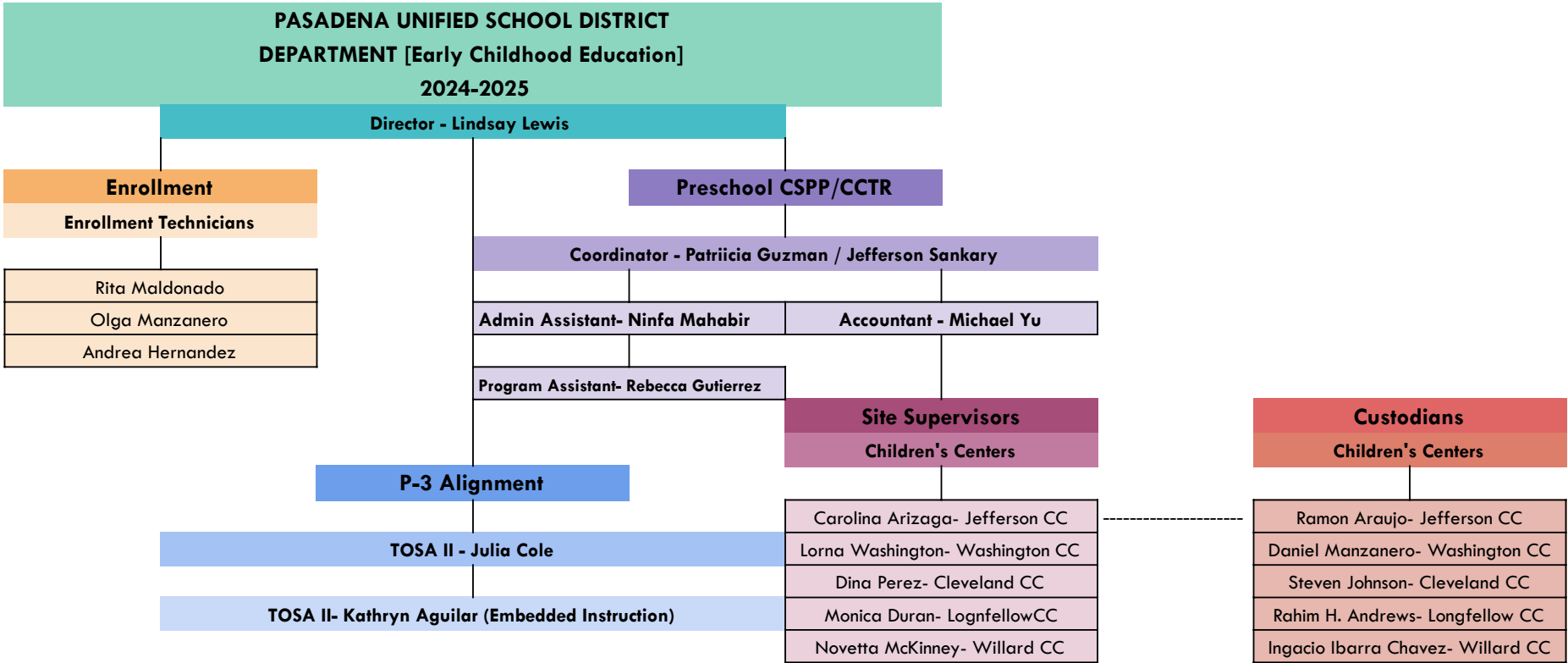
PASADENA UNIFIED SCHOOL DISTRICT  
2024-2025 DEPARTMENT PLAN

---

Metrics

- a. On going.





We also have all of the Prek permit teachers and assistants under our department. Not listed here