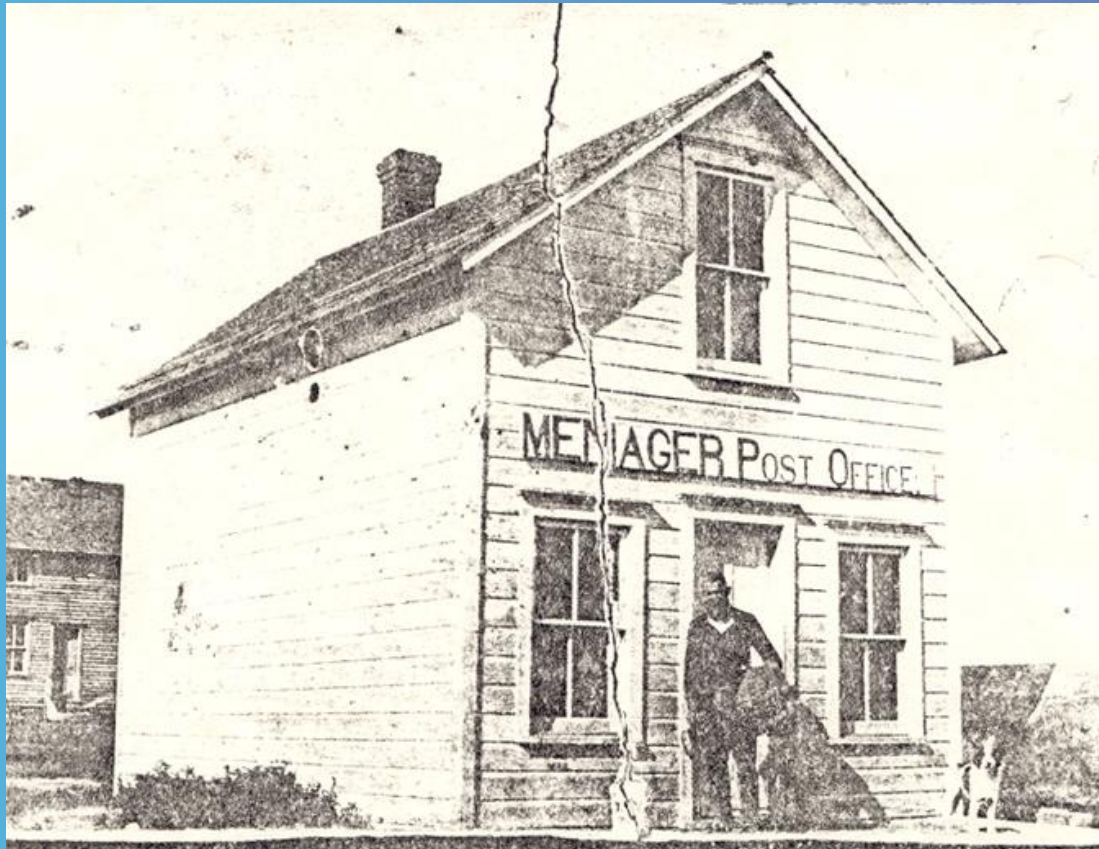


Piper School District History

Brauer Elementary School District #29-65
137th and Leavenworth Road, Kansas City, KS

Brauer may have originally been called Coffey School. Coffey School was built by Barney Coffey who came from Ireland and found employment on the railroad. Just previous to the Civil War he came to Wyandotte County, Kansas and engaged in farming. During the war he served in the Kansas Militia.



According to the map of 1860, Wyandotte County, there was a schoolhouse in this area referred to as Coffey School House. The Coffey School and then the Brauer School were located very close to Menager Junction a stop on the Northwestern Railroad.

It is assumed that Brauer School replaced Coffey School House late in the 1800's. The first school known as Brauer School burned and a second school was built.





← Brauer Elementary School

Wy. Co. Christian Church →



DEC 29 2004

Center Point District #38
107th and Hollingsworth Road, Kansas City, KS

A one-room school which opened around 1860. The school year was an eight month term beginning after labor day and ending in April. The school was closed for one year in 1936-37 because of a lack of funds. It reopened for the next school year in the fall of 1937.

Wilma Haas told us she started first grade in the fall of 1941. Another family with four students attended along with Mary Elizabeth Haas. Wilma Haas moved with her family after six weeks of school to 131st Street to attend Brauer School. The other family moved and Mary Elizabeth Haas was the only student left in attendance. The school closed in April 1942.



ARITHMETIC LESSON . . . MISS ERNESTINE PERRY TEACHES HER LONE PUPIL, MARY ELIZABETH HAAS, 10, AT CENTER POINT SCHOOL.

Center Point – 1910

The building is now used as a private residence. The current owner believes the original school was what is now her living room because it does not have a basement under this part of the structure. It is the only original grade school in the district that is still in existence.

F. L. Schlagle attended school in this one-room school, his family lived on a farm in the Wolcott area.



Miss Lizzie
Haas

Island Creek Elementary School District #24
5400 North 123 Street, Kansas City, KS 66109

This school was originally known as the Little Rock School because of the basic construction material.

In about 1917, a one-room white wood frame schoolhouse was built to replace the Little Rock School that had been destroyed by a tornado in the spring of that year. The school then became known as Island Creek School, as it sat on a high bluff above Island Creek.



In 1967, it was donated to the Agricultural Hall of Fame and National Center.

It opened for tours on April 1, 1981.

Inside Island Creek



Maywood Elementary School District #45
10840 Parallel, Kansas City, KS

Students were attending school in the first brick building built prior to 1916. In the mid 1950's this building was replaced with a one-story brick school building with two rooms. It was a 1960 sq. ft. building and was located on approximately 1.64 acres of land.



Mid 1950's



Piper Elementary School District #22

The wood frame building located at 119th and Leavenworth Road on the north side was the original Piper Elementary School. One acre of land was donated by Dr. Carlton Newton for this school. The school at this location was built in the late 1800's. This school burned in 1904. Many descendants of the Larmon E. and Margaret Scott family attended school at this location. Mr. and Mrs. Larmon E. Scott, Sr., and Mr. and Mrs. John Waldron were instrumental in platting the town site of Piper, Kansas in 1888.



In 1905 a new brick school was built at 12112 Russell in the town of Piper. This building was in use until the mid-1950's when it was replaced with a one-story brick school building with three rooms on an acre of land located at 12036 Leavenworth Road, Piper, Kansas.



← Piper Elementary, 1905



Piper Elementary, 1950's →

Piper Elementary, 1976

(with addition to old Piper High School)

Became Piper Elementary
West in 1994



Piper Elementary East (1994)
4410 North 107th Street



Piper Rural High School District #1
3130 North 122 Street, Kansas City, KS

At the close of the school year of 1919 a community meeting was held and plans for a rural high school in Piper, Kansas were discussed. At the time of this meeting there was no rural high school in Wyandotte County.

Piper Rural High School District #1 was organized with James Glenn as director, William Einhellig as clerk and W. B. Vining serving as treasurer of the board. This board was given authority to go ahead and map out the boundaries of District #1 and issue bonds for the erection of a new building. It was decided the district boundaries should extend as far west as the Wyandotte/Leavenworth County line and north, east and south to the “opposition,” that is, to a line bounding territory where there would be opposition to voting bonds for the school. Thus the district’s lines are a little irregular. District #1 as platted at that time had a valuation of \$1,800,000. One-room elementary schools Brauer, Center Point, Island Creek, Maywood, Piper, Pleasant Ridge, Wallula and Wolcott were located in the district boundaries. Each elementary school was governed by a board of education consisting of three members.

In the fall of 1919 the Piper Rural High School District #1 was opened with an enrollment of 65 pupils in the Woodsman Hall located at approximately 12129 Russell Avenue in Piper, Kansas. The first principal was F. C. Marks. During World War I the federal government asked the state of Kansas to send six of their best educators to France to instruct the soldiers during the war. Mr. Marks was one of the six. On his return to the United States, Piper Rural High School District #1 was fortunate enough to secure him as the first principal.



In March of 1920 the Woodsman Hall burned, so the board purchased canvas and divided the church in Piper into four rooms and continued school for the remainder of the year. The first class graduated in May of 1920. This class graduated the following four students: Delila Barker, Mike Einhellig, Helen Freedle and Dwight Vining.



Piper Rural High School District #1
(under construction, 1919-1920)



Piper Rural High School District #1

In the fall of 1920 the school was moved to the new building with George B. Owens as principal.



Piper Rural High School District #1



Piper Rural High School District #1

In 1951 a new gymnasium was added to the existing building. This bond issue passed by only one vote. At the time of this bond issue the total enrollment of Piper Rural High School District #1 was approximately 20 students.



Piper High School

In 1964-65 a new building was built at 4400 North 107 Street and was called **Piper High School**.

In 1976, a gymnasium and classrooms were added for students in grades seven and eight. In 1992-93, renovation and remodeling took place. At this time, an auditorium was added.

Piper High School (all additions completed)



Piper Middle School
Fall of 1990

Grades 6 – 8



Pleasant Ridge Elementary School District #25 Established 1880
3440 North 99 Street, Kansas City, Kansas

Approximately two acres of land in 1870 was donated by Bob Douglas for the construction of Pleasant Ridge.

Pleasant Ridge was a wooden one-room school dating from 1880. The last eighth grade class to graduate from this one-room school graduated on May 16, 1954. There were six members in this class: Kimball L. Backus, Jr., John W. Chapman, Rosemary Klaus, Joyce Shively, Larry Tabberer and Victor L. Whitney. Miss Grace McKenzie was the teacher and principal at that time. In 1953-54 the primary students held classes in the one-room schoolhouse and students in grades five, six, seven and eight attended school in the back room of a garage next door. The primary teacher was Mrs. Joy Hedges. The county superintendent of schools was Mr. George Bell. Members of the Board of Education were Harold Chapman, director, Mrs. Joseph Juranich, treasurer, and Mrs. Fred Brunner, clerk.





John Chapman, current superintendent of Piper USD 203 is pictured here in the fourth grade, when he attended Pleasant Ridge Elementary School.



John Chapman

Pleasant Ridge, 1954



**Wallula Elementary School District #12 in Wyandotte County and #36 of
Leavenworth County**
13700 Polfer Road, Kansas City, KS

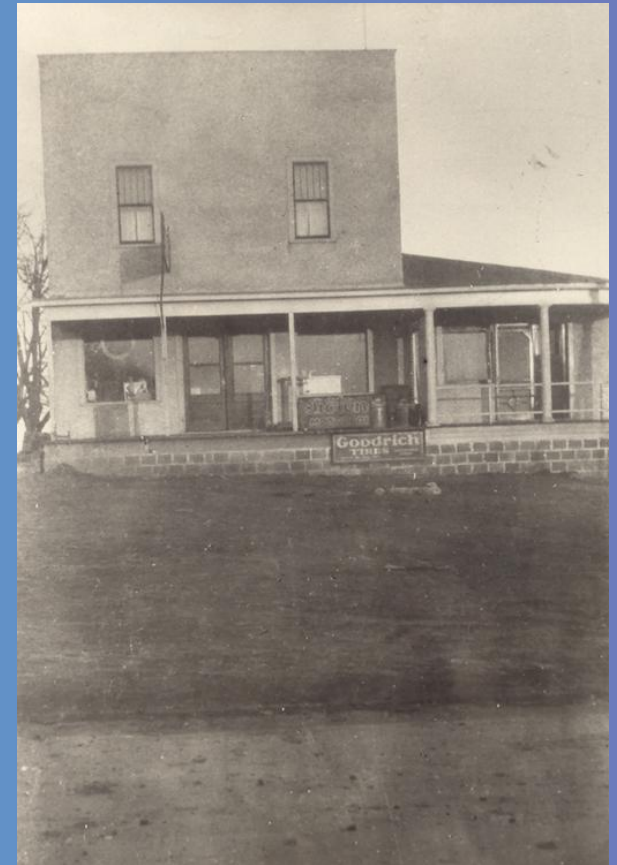
August 14, 1869, land was purchased for \$350.00 to be used for church and school purposes forever.

Wallula was organized in 1869 as a one-room school with an eight-month term and was in operation until 1957. It was annexed into Piper Elementary School District 22 on April 9, 1959.



According to accounts of Nellie McGuinn in KCKS Public School System, 1819-1961, M. E. Pearson graduated from the University of Kansas. He came to teach at Wallula in 1885-86. Wallula District #12 was located 15 miles west of Wyandotte (later Kansas City, KS). He taught 60 pupils in his first class at Wallula. After one year, Mr. Pearson left Wallula and was assigned to Wood, later Cooper School, in old Kansas City, Kansas. In 1902 he became superintendent of the Kansas City, Kansas schools. A position he held for 30 years.

Store at Wallula



(Connor) Wolcott Elementary School District #11
5201 North 97 Street, Kansas City, Kansas



Wolcott Elementary School – 1914



WOLCOTT PUBLIC SCHOOL
MISS LIZZIE HAYS - TEACHER

REAL FIRE DRILL

1-7-1942

Sirs:

The fact that the school was really on fire this time did not alter the regular fire-drill routine of this Kansas school. A teacher announced the fire quietly to

the class and the pupils took their coats from the cloakroom and marched calmly out as always. Although it meant vacation, some didn't even bother to watch their school go down.

CHAPMAN TURNER

Kansas City, Mo.



Y KANSAN, WEDNESDAY EVENING, JANUARY 7, 1942

Farewell to Their School Building



Wolcott Elementary School – Mid-1950's

This school building was located on approximately 5 acres of land. On July 1, 1962, it was transferred to Piper USD 203 by quit claim deed. On June 4, 1979 it was sold to Marion Lynn and Shirley Lynn for \$21,000.00.



School Enrollment for Wyandotte County

October 1, 1939

| GRADE SCHOOLS. | | | | | |
|----------------|------|------|--------------|-------|-------|
| School— | This | Last | School— | This | Last |
| Yr. | Yr. | Yr. | Yr. | Yr. | Yr. |
| Lindbergh . | 62 | 64 | Island Ck.. | 7 | 12 |
| Vance ... | 109 | 86 | Pl. Ridge .. | 34 | 33 |
| Turner ... | 248 | 239 | Walker | 21 | 16 |
| Welborn .. | 330 | 322 | Brauer | 14 | 15 |
| Wolcott .. | 49 | 49 | Mission ... | 24 | 29 |
| Wallula ... | 10 | 11 | Sinai | 63 | 72 |
| Stony Pt.. | 151 | 143 | Oak Grove. | 55 | 59 |
| White Ch.. | 102 | 110 | Hazel Grove | 89 | 71 |
| Junction . | 234 | 240 | Twist | 25 | 20 |
| Vernon ... | 120 | 123 | Horanif ... | 38 | 30 |
| Nearman . | 10 | 12 | Timmons .. | 57 | 60 |
| Edward'ille | 89 | 93 | Center Pt.. | 5 | 10 |
| Morris ... | 86 | 88 | Muncie ... | 104 | 92 |
| Piper | 24 | 24 | Maywood .. | 22 | 20 |
| Pomeroy . | 51 | 52 | | | |
| Total | | | | 2,233 | 2,197 |
| HIGH SCHOOLS. | | | | | |
| Piper | 49 | 38 | Edward'ille. | 63 | 64 |
| Wash'gton | 375 | 353 | Turner ... | 225 | 213 |
| Total | | | | 712 | 668 |

Credits

Brauer Elementary School #29 & 65

Diane Millsap Treff

Center Point Elementary School #38

Virginia Haas Miller

Paul Ray Randall

Island Creek Elementary School #24

Agricultural Hall of Fame

Selma Marxen McMahan

Jeanette McMahan Rice

Bob Yunghans

Maywood Elementary School #45

Piper Elementary School #22

Loretta Scott Falk Groseclose

Piper Rural High School District #1

Sandra Englehart Hennessey

Diane Millsap Treff

Carol Bettis Sheppard

Lynn Sheppard

Pleasant Ridge Elementary School #25

Kim Backus

John Chapman

Jeanette McMahan Rice

Selma Marxen McMahan

Wallula Elementary School #12

Catherine Merwin Wiehe

Wolcott Elementary School #11

Marie Fern Hendrickson

Loretta Scott Falk Groseclose

Presenters

Sandra Englehart Hennessey

Registrar

Piper High School

James Grogran

Computer Technician

Piper USD 203

Lynn Sheppard

Retired History Teacher

Washington High School

