

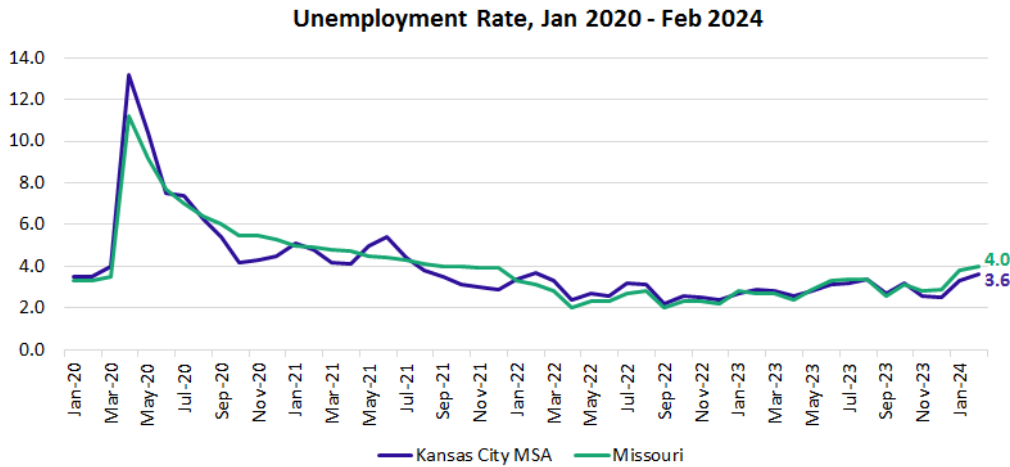


Demographic Report

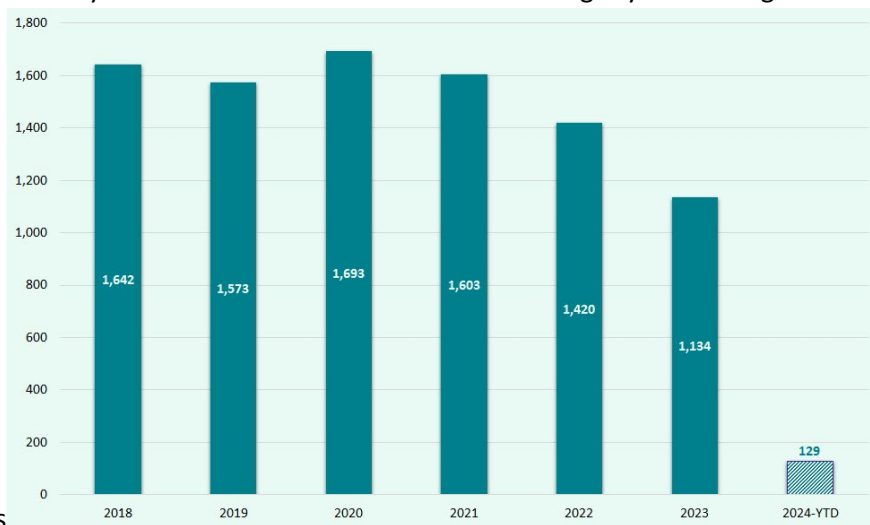
May 2024

Liberty Public Schools Executive Summary

- Population Trends for Liberty Public Schools
 - Population – 66,097
 - Number of Households – 23,786
 - Average Household size – 2.72
 - Median Age – 36.1
- State Enrollment has decreased by 1,941 students since 2022/23
- Liberty PS enrollment has declined by -2.7%, or 344 students, in the last 5 years
- Kansas City MSA unemployment rate has returned to pre-pandemic levels of 3.6% in Feb 2024



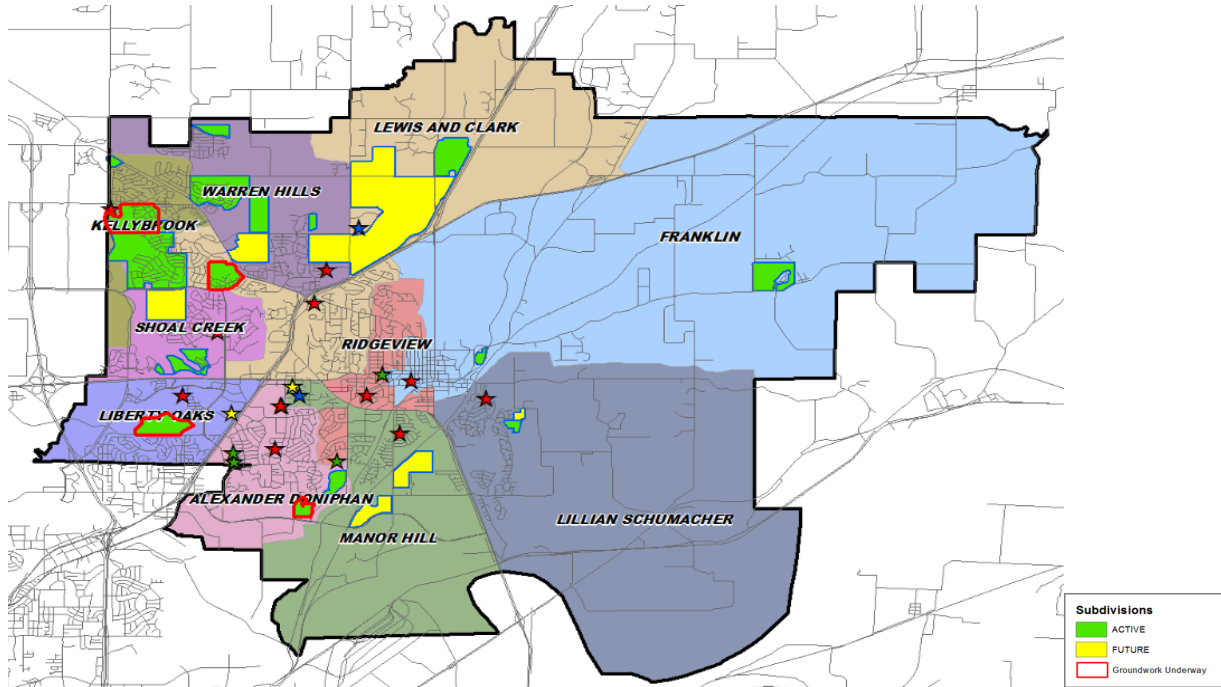
- Approximately 220 new jobs will be created in the area with new facilities opening in the area
 - TAB Battery Manufacturing HQ & assembly facility in Liberty will create 50 new jobs, opening in the 2nd quarter of 2024
 - US Motor Works Distribution Center opened a new distribution center in Liberty's Heartland Meadows Industrial Park in late 2023, bringing 70 new jobs to the area
 - Google is developing a new data center near Liberty creating 100 new jobs
- Home sales in Liberty Public Schools boundaries have been slightly decreasing over the last 3 years due to



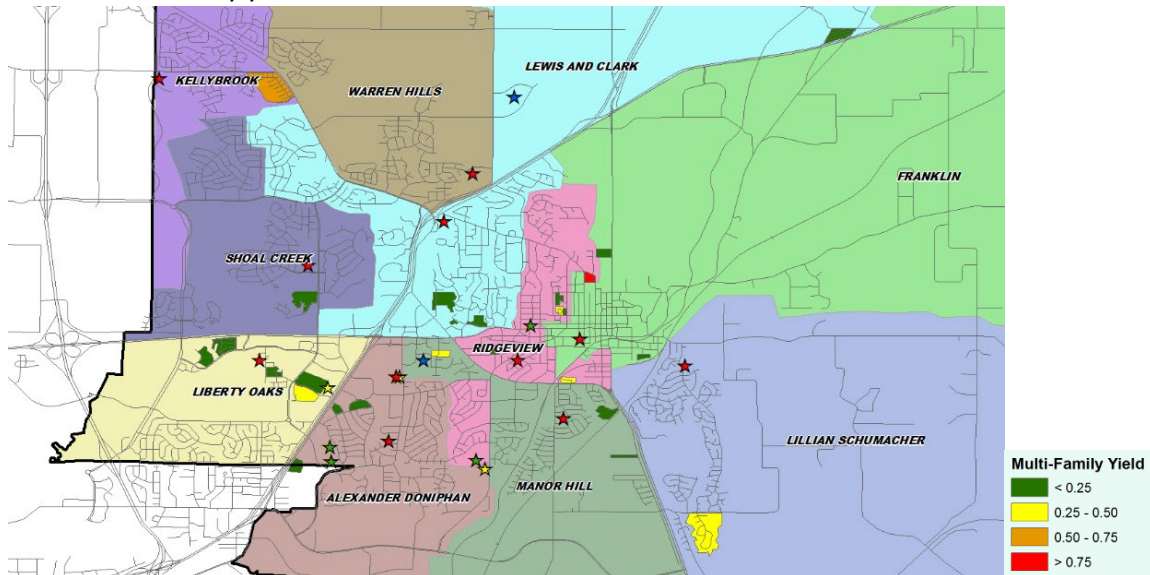
interest rates

- 2024 home sales to date indicate slowing of new home price increases in response to increased interest rates
- The district has 18 actively building subdivisions with roughly 475 lots available to build on
- Within LPS there are 6 future subdivisions with more than 3,000 lots in various stages of planning

- Currently more than 300 lots are under development in 4 subdivisions that are expected to impact the district in the next 1 – 2 years



- In Liberty PS there are nearly 650 students currently residing in roughly 5,535 multi-family units, yielding an overall multi-family yield on 0.116



- 139 students currently reside outside of the district, representing 1.1% of the total student population
- Liberty Public Schools district enrollment has decreased by 208 students from the fall of 2022-23
- The 12th grade class in 349 students larger than the incoming Kindergarten class in October 2023
- The 12th grade class has been 200 – 330 students larger than the incoming Kindergarten class from the last 3 years

Year (OCT)	PK	K	1st	2nd	3rd	4th	5th	6th	7th	8th	9th	10th	11th	12th	K-12 Total	K-12 Growth	% Growth
2019/20	250	838	899	887	892	906	957	1,077	992	1,045	1,084	1,015	1,030	871	12,493		
2020/21	269	814	834	904	886	903	911	962	1,083	1,000	1,073	1,083	1,002	1,045	12,500	7	0.1%
2021/22	238	813	829	840	910	895	907	927	964	1,075	1,017	1,080	1,078	1,022	12,357	-143	-1.1%
2022/23	213	764	815	846	854	950	903	937	943	974	1,114	1,027	1,074	1,103	12,304	-53	-0.4%
2023/24	228	754	783	814	860	878	968	926	940	945	1,001	1,118	1,006	1,103	12,096	-208	-1.7%

- Due to this trend, enrollment in Liberty Public Schools is forecasted to turn back positive in 4 – 5 years
- Enrollment at five schools within the district (Shoal Creek Elementary, Franklin Elementary, Warren Hills Elementary, Epic Elementary, and Liberty North High School) is forecasted to exceed 90% of capacity for the next ten years
- Enrollment at South Valley Middle School is forecasted to exceed capacity starting in Fall 2024

		Fall	ENROLLMENT HISTORY										
Campus	Capacity	2023/24	2024/25	2025/26	2026/27	2027/28	2028/29	2029/30	2030/31	2031/32	2032/33	2033/34	
A. Doniphan Elementary	450	330	311	301	301	301	315	326	328	329	334	338	
L. Shumacher Elementary	637	456	445	426	392	383	368	370	375	378	385	387	
Manor Hill Elementary	439	292	263	248	251	258	261	275	281	291	307	319	
Ridgeview Elementary	548	348	330	313	312	307	304	306	308	316	323	327	
Lewis & Clark Elementary	708	537	507	490	471	460	448	458	493	536	581	619	
Liberty Oaks Elementary	605	513	483	478	443	447	442	444	449	457	471	477	
Shoal Creek Elementary	887	864	828	810	796	830	863	886	899	902	916	923	
Franklin Elementary	323	255	266	281	293	301	305	295	289	288	292	296	
Warren Hills Elementary	783	615	640	661	667	661	683	713	742	746	756	760	
Kellybrook Elementary	755	553	560	571	570	559	572	587	572	560	555	546	
Epic Elementary	300	294	294	294	291	293	295	297	298	299	300	301	
ELEMENTARY SCHOOL TOTALS	6,435	5,057	4,927	4,873	4,787	4,800	4,856	4,957	5,034	5,102	5,220	5,293	
Elementary Absolute Change		215	-130	-54	-86	13	56	101	77	68	118	73	
Elementary Percent Change		4.44%	-2.57%	-1.10%	-1.76%	0.27%	1.17%	2.08%	1.55%	1.35%	2.31%	1.40%	
Liberty Middle School	806	595	571	542	535	516	505	480	475	456	455	457	
Discovery Middle School	846	661	663	670	696	643	630	604	619	622	619	622	
South Valley Middle School	853	805	850	876	897	891	885	897	925	938	941	941	
Heritage Middle School	1,113	750	744	740	690	680	677	708	718	702	688	688	
MIDDLE SCHOOL TOTALS	3,618	2,811	2,828	2,828	2,818	2,730	2,697	2,689	2,737	2,718	2,703	2,708	
Middle School Absolute Change		-43	17	0	-10	-88	-33	-8	48	-19	-15	5	
Middle School Percent Change		-1.45%	0.60%	0.00%	-0.35%	-3.12%	-1.21%	-0.30%	1.79%	-0.69%	-0.55%	0.18%	
Liberty High School	2,400	1,902	1,865	1,813	1,712	1,726	1,679	1,665	1,632	1,571	1,534	1,493	
Liberty North High School	2,400	2,326	2,234	2,261	2,215	2,198	2,243	2,238	2,216	2,210	2,224	2,275	
HIGH SCHOOL TOTALS	4,800	4,228	4,099	4,074	3,927	3,924	3,922	3,903	3,848	3,781	3,758	3,768	
High School Absolute Change		-90	-129	-25	-147	-3	-2	-19	-55	-67	-23	10	
High School Percent Change		-2.14%	-3.05%	-0.61%	-3.61%	-0.08%	-0.05%	-0.48%	-1.41%	-1.74%	-0.61%	0.27%	
DISTRICT TOTALS		12,096	11,854	11,775	11,532	11,454	11,475	11,549	11,619	11,601	11,681	11,769	
District Absolute Change		82	-242	-79	-243	-78	21	74	70	-18	80	88	
District Percent Change		0.68%	-2.00%	-0.67%	-2.06%	-0.68%	0.18%	0.64%	0.61%	-0.15%	0.69%	0.75%	

Green exceeds 90% of Capacity
Yellow box = Exceed Capacity

- Five-year enrollment (2028/29) is 11,475 students
- Ten-year enrollment (2033/34) is 11,769 students

Year (OCT)	PK	K	1st	2nd	3rd	4th	5th	6th	7th	8th	9th	10th	11th	12th	K-12 Total	K-12 Growth	% Growth
2019/20	250	838	899	887	892	906	957	1,077	992	1,045	1,084	1,015	1,030	871	12,493		
2020/21	269	814	834	904	886	903	911	962	1,083	1,000	1,073	1,083	1,002	1,045	12,500	7	0.1%
2021/22	238	813	829	840	910	895	907	927	964	1,075	1,017	1,080	1,078	1,022	12,357	-143	-1.1%
2022/23	213	764	815	846	854	950	903	937	943	974	1,114	1,027	1,074	1,103	12,304	-53	-0.4%
2023/24	228	754	783	814	860	878	968	926	940	945	1,001	1,118	1,006	1,103	12,096	-208	-1.7%
2024/25	228	739	776	802	831	885	894	952	933	943	975	1,009	1,100	1,015	11,854	-242	-2.0%
2025/26	228	739	770	797	820	841	906	926	964	938	975	983	995	1,121	11,775	-79	-0.7%
2026/27	228	708	773	793	816	835	862	913	935	970	968	981	966	1,012	11,532	-243	-2.1%
2027/28	228	735	740	800	815	846	864	870	920	940	1,002	975	965	982	11,454	-78	-0.7%
2028/29	228	771	773	764	824	850	874	892	880	925	971	1,009	960	982	11,475	21	0.2%
2029/30	228	800	816	800	791	865	885	903	901	885	955	979	993	976	11,549	74	0.6%
2030/31	228	816	841	844	824	822	887	917	914	906	913	962	964	1,009	11,619	70	0.6%
2031/32	228	824	855	865	861	856	841	870	928	920	935	920	946	980	11,601	-18	-0.2%
2032/33	228	832	862	878	881	892	875	888	881	934	949	942	906	961	11,681	80	0.7%
2033/34	228	822	870	884	895	915	907	923	899	886	964	956	927	921	11,769	88	0.8%



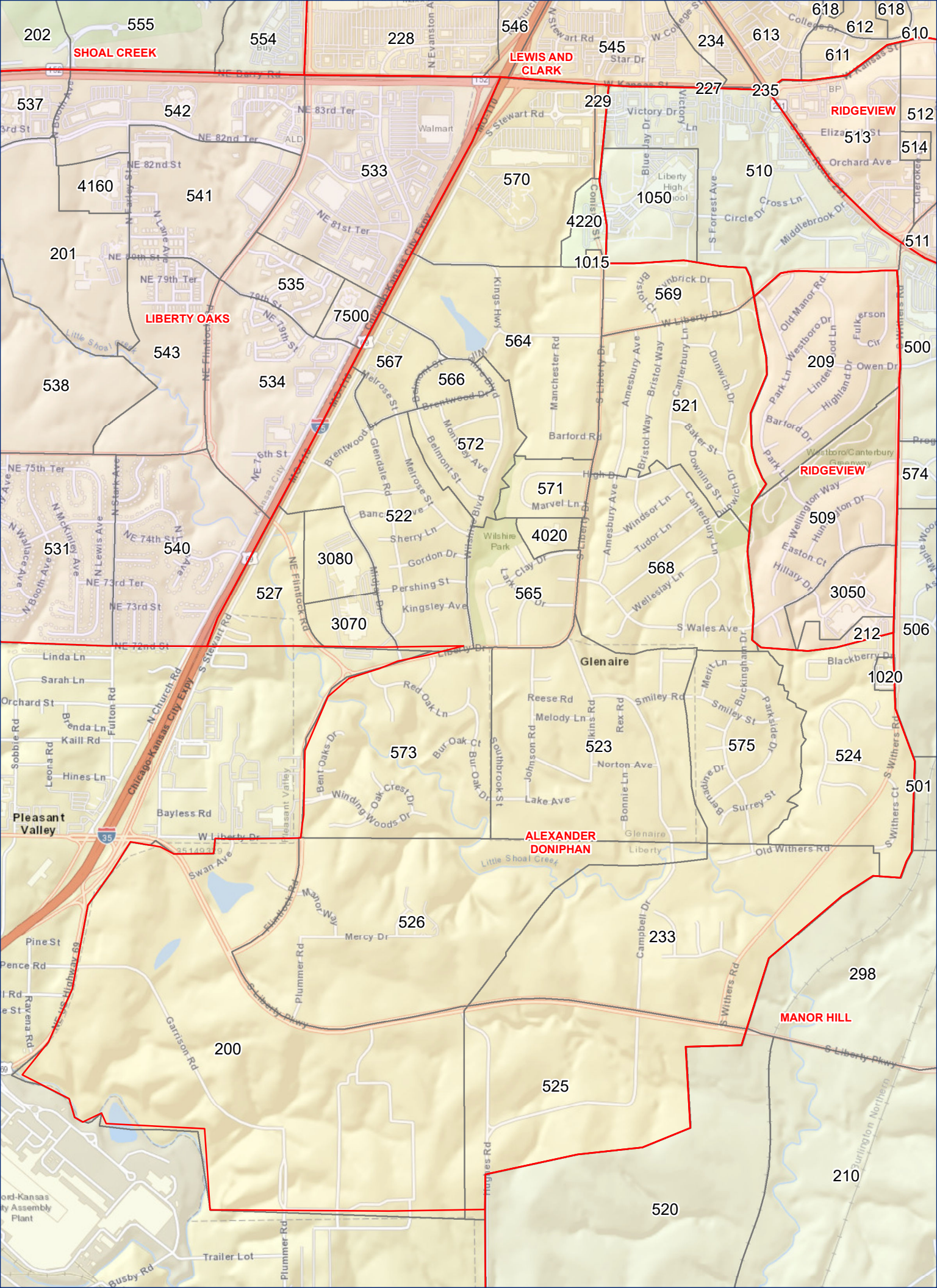
Liberty PS Planning Area Report

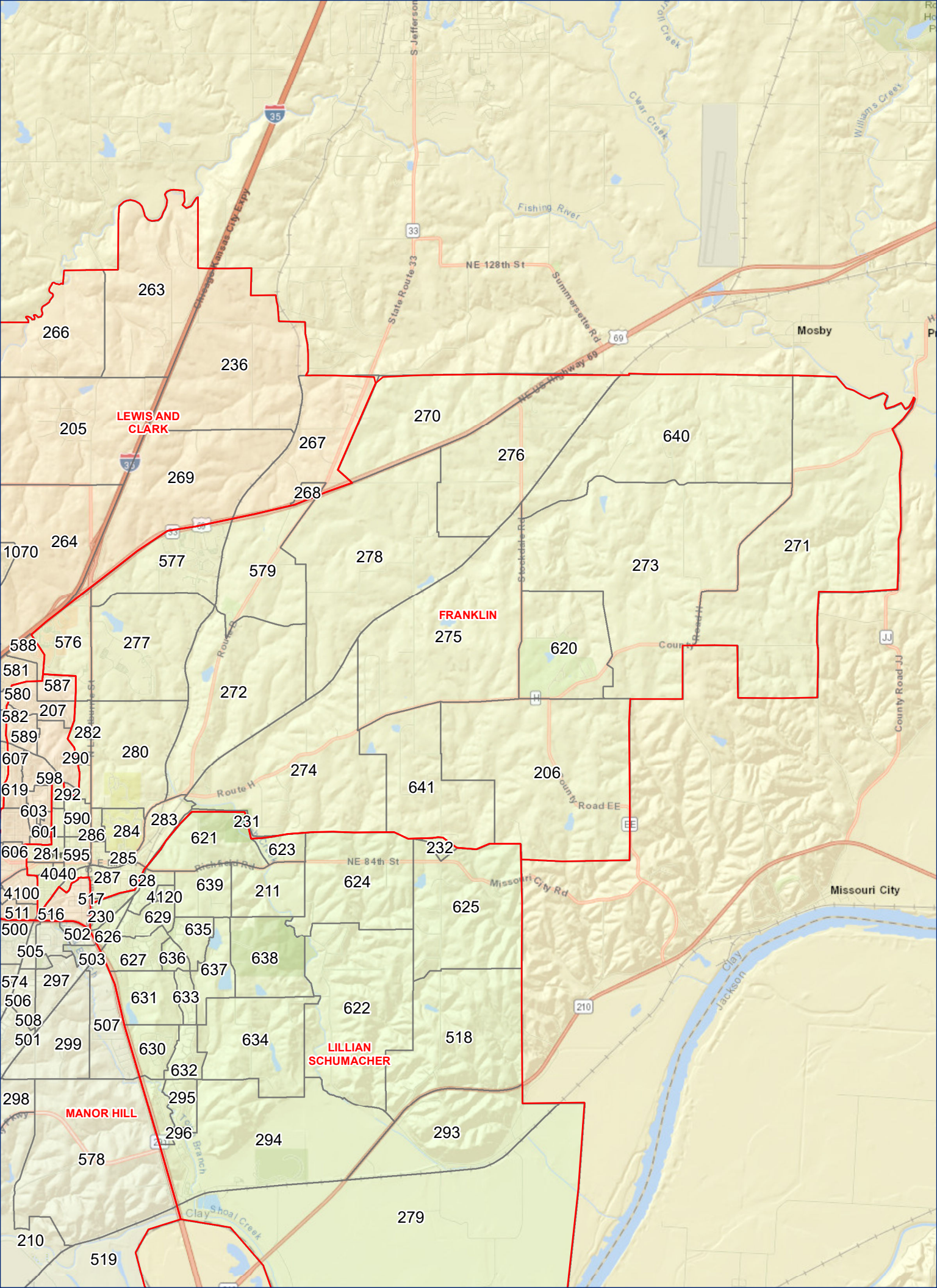
PA	ELEM_NAME	MID_NAME	HIGH_NAME	ELEM	MID	HIGH	TOT_STUD
200	ALEXANDER DONIPHAN	DISCOVERY	LIBERTY	2	0	3	5
202	SHOAL CREEK	DISCOVERY	LIBERTY	18	25	30	73
203	KELLYBROOK	SOUTH VALLEY	LIBERTY NORTH	79	39	71	189
204	WARREN HILLS	SOUTH VALLEY	LIBERTY NORTH	2	2	9	13
205	LEWIS AND CLARK	HERITAGE	LIBERTY NORTH	31	16	33	80
206	FRANKLIN	HERITAGE	LIBERTY NORTH	1	0	0	1
207	RIDGEVIEW	HERITAGE	LIBERTY NORTH	24	30	35	89
208	RIDGEVIEW	HERITAGE	LIBERTY NORTH	28	19	16	63
209	RIDGEVIEW	LIBERTY	LIBERTY	52	31	33	116
214	WARREN HILLS	HERITAGE	LIBERTY NORTH	9	4	8	21
215	WARREN HILLS	HERITAGE	LIBERTY NORTH	52	32	47	131
216	LEWIS AND CLARK	SOUTH VALLEY	LIBERTY NORTH	35	32	43	110
219	SHOAL CREEK	SOUTH VALLEY	LIBERTY NORTH	92	50	97	239
232	LILLIAN SCHUMACHER	HERITAGE	LIBERTY NORTH	0	1	2	3
233	ALEXANDER DONIPHAN	LIBERTY	LIBERTY	0	1	1	2
236	LEWIS AND CLARK	HERITAGE	LIBERTY NORTH	1	4	7	12
237	LEWIS AND CLARK	HERITAGE	LIBERTY NORTH	6	8	8	22
238	LEWIS AND CLARK	HERITAGE	LIBERTY NORTH	19	16	20	55
239	WARREN HILLS	SOUTH VALLEY	LIBERTY NORTH	147	87	111	345
240	KELLYBROOK	SOUTH VALLEY	LIBERTY NORTH	111	58	74	243
241	KELLYBROOK	SOUTH VALLEY	LIBERTY NORTH	62	40	47	149
243	WARREN HILLS	SOUTH VALLEY	LIBERTY NORTH	38	18	36	92
245	KELLYBROOK	SOUTH VALLEY	LIBERTY NORTH	74	27	39	140
246	KELLYBROOK	SOUTH VALLEY	LIBERTY NORTH	10	14	11	35
247	KELLYBROOK	SOUTH VALLEY	LIBERTY NORTH	37	21	20	78
249	WARREN HILLS	SOUTH VALLEY	LIBERTY NORTH	136	77	117	330
250	WARREN HILLS	SOUTH VALLEY	LIBERTY NORTH	6	6	8	20
253	WARREN HILLS	SOUTH VALLEY	LIBERTY NORTH	0	0	1	1
255	WARREN HILLS	SOUTH VALLEY	LIBERTY NORTH	6	3	2	11
256	WARREN HILLS	HERITAGE	LIBERTY NORTH	15	12	19	46
257	WARREN HILLS	HERITAGE	LIBERTY NORTH	25	10	22	57
259	WARREN HILLS	HERITAGE	LIBERTY NORTH	86	67	116	269
260	WARREN HILLS	HERITAGE	LIBERTY NORTH	15	6	19	40
263	LEWIS AND CLARK	HERITAGE	LIBERTY NORTH	13	13	24	50
266	LEWIS AND CLARK	HERITAGE	LIBERTY NORTH	5	4	5	14
267	LEWIS AND CLARK	HERITAGE	LIBERTY NORTH	8	5	6	19
268	LEWIS AND CLARK	HERITAGE	LIBERTY NORTH	9	6	4	19
270	FRANKLIN	HERITAGE	LIBERTY NORTH	0	1	2	3
271	FRANKLIN	HERITAGE	LIBERTY NORTH	3	1	2	6
273	FRANKLIN	HERITAGE	LIBERTY NORTH	5	8	8	21
274	FRANKLIN	HERITAGE	LIBERTY NORTH	4	2	4	10
275	FRANKLIN	HERITAGE	LIBERTY NORTH	7	2	9	18
276	FRANKLIN	HERITAGE	LIBERTY NORTH	2	1	1	4
278	FRANKLIN	HERITAGE	LIBERTY NORTH	2	7	13	22
280	FRANKLIN	HERITAGE	LIBERTY NORTH	6	5	7	18
281	FRANKLIN	HERITAGE	LIBERTY NORTH	21	10	17	48

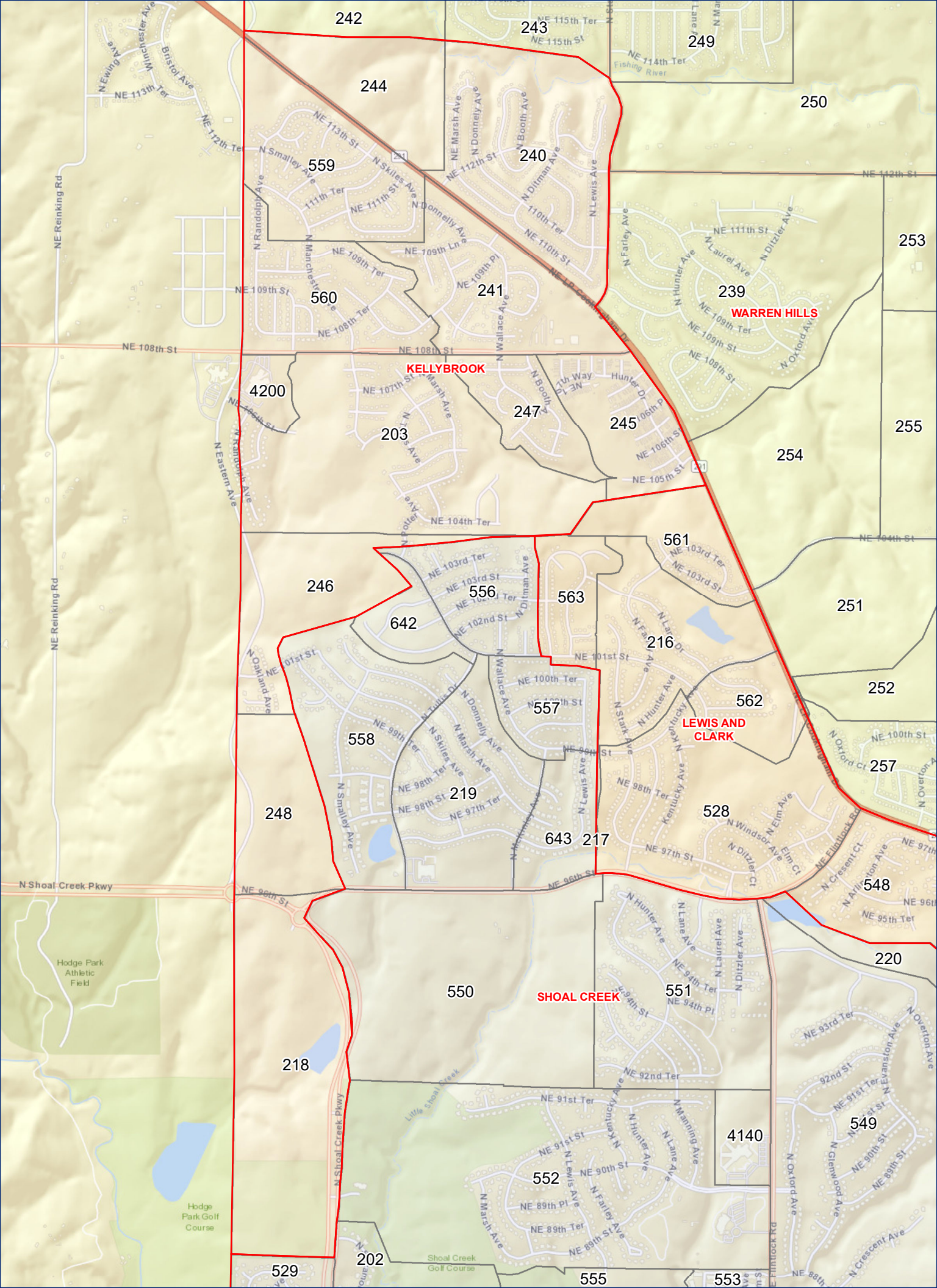
PA	ELEM_NAME	MID_NAME	HIGH_NAME	ELEM	MID	HIGH	TOT_STUD
283	FRANKLIN	HERITAGE	LIBERTY NORTH	18	8	8	34
284	FRANKLIN	HERITAGE	LIBERTY NORTH	0	1	1	2
285	FRANKLIN	HERITAGE	LIBERTY NORTH	14	12	11	37
286	FRANKLIN	HERITAGE	LIBERTY NORTH	13	8	7	28
287	FRANKLIN	HERITAGE	LIBERTY NORTH	25	16	23	64
288	FRANKLIN	HERITAGE	LIBERTY NORTH	0	0	1	1
291	RIDGEVIEW	HERITAGE	LIBERTY NORTH	11	12	17	40
293	LILLIAN SCHUMACHER	LIBERTY	LIBERTY	0	1	2	3
294	LILLIAN SCHUMACHER	LIBERTY	LIBERTY	0	0	2	2
295	LILLIAN SCHUMACHER	LIBERTY	LIBERTY	10	12	15	37
296	LILLIAN SCHUMACHER	LIBERTY	LIBERTY	17	12	13	42
297	MANOR HILL	LIBERTY	LIBERTY	66	22	42	130
298	MANOR HILL	LIBERTY	LIBERTY	0	0	1	1
299	MANOR HILL	LIBERTY	LIBERTY	3	1	3	7
501	MANOR HILL	LIBERTY	LIBERTY	29	19	30	78
502	MANOR HILL	LIBERTY	LIBERTY	9	7	14	30
503	MANOR HILL	LIBERTY	LIBERTY	8	7	4	19
504	MANOR HILL	LIBERTY	LIBERTY	22	18	21	61
506	MANOR HILL	LIBERTY	LIBERTY	30	25	50	105
507	MANOR HILL	LIBERTY	LIBERTY	34	13	31	78
508	MANOR HILL	LIBERTY	LIBERTY	21	16	11	48
509	RIDGEVIEW	LIBERTY	LIBERTY	26	24	40	90
510	MANOR HILL	LIBERTY	LIBERTY	19	11	19	49
511	RIDGEVIEW	HERITAGE	LIBERTY NORTH	14	5	23	42
512	RIDGEVIEW	HERITAGE	LIBERTY NORTH	23	18	29	70
513	RIDGEVIEW	HERITAGE	LIBERTY NORTH	5	1	1	7
514	RIDGEVIEW	HERITAGE	LIBERTY NORTH	5	3	0	8
515	RIDGEVIEW	HERITAGE	LIBERTY NORTH	17	12	8	37
516	RIDGEVIEW	HERITAGE	LIBERTY NORTH	1	3	1	5
518	LILLIAN SCHUMACHER	LIBERTY	LIBERTY	1	1	4	6
521	ALEXANDER DONIPHAN	LIBERTY	LIBERTY	51	28	43	122
522	ALEXANDER DONIPHAN	DISCOVERY	LIBERTY	35	22	31	88
523	ALEXANDER DONIPHAN	DISCOVERY	LIBERTY	23	14	17	54
524	ALEXANDER DONIPHAN	LIBERTY	LIBERTY	31	7	22	60
528	LEWIS AND CLARK	HERITAGE	LIBERTY NORTH	95	50	80	225
529	SHOAL CREEK	DISCOVERY	LIBERTY	31	18	44	93
531	LIBERTY OAKS	DISCOVERY	LIBERTY	100	58	104	262
532	LIBERTY OAKS	DISCOVERY	LIBERTY	146	109	107	362
534	LIBERTY OAKS	DISCOVERY	LIBERTY	40	21	34	95
535	LIBERTY OAKS	DISCOVERY	LIBERTY	21	9	12	42
536	LIBERTY OAKS	DISCOVERY	LIBERTY	2	4	12	18
537	LIBERTY OAKS	DISCOVERY	LIBERTY	14	7	5	26
538	LIBERTY OAKS	DISCOVERY	LIBERTY	33	17	25	75
539	LIBERTY OAKS	DISCOVERY	LIBERTY	13	10	8	31
540	LIBERTY OAKS	DISCOVERY	LIBERTY	81	36	61	178
541	LIBERTY OAKS	DISCOVERY	LIBERTY	9	2	3	14

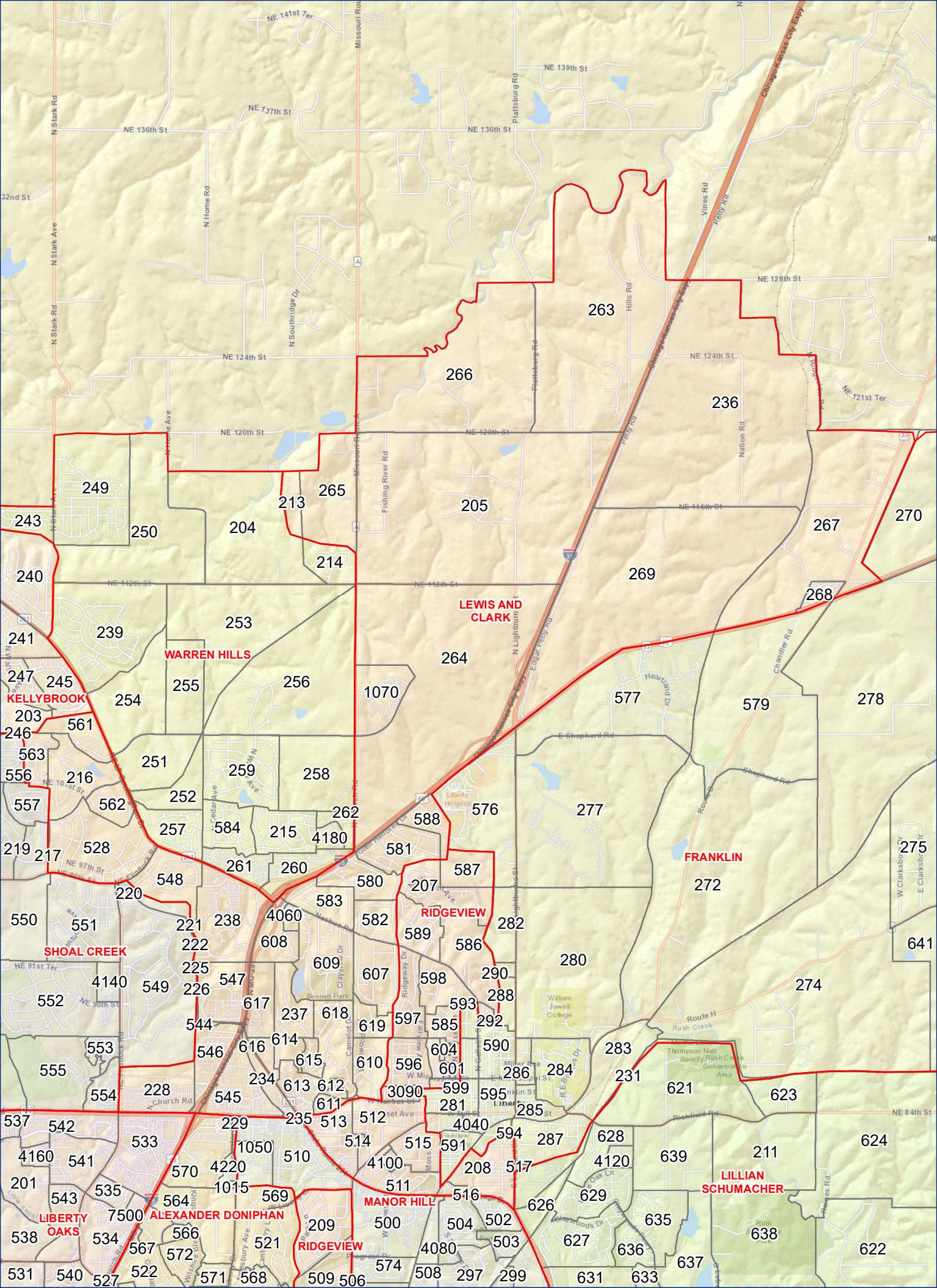
PA	ELEM_NAME	MID_NAME	HIGH_NAME	ELEM	MID	HIGH	TOT_STUD
543	LIBERTY OAKS	DISCOVERY	LIBERTY	26	8	14	48
546	LEWIS AND CLARK	DISCOVERY	LIBERTY	1	0	0	1
547	LEWIS AND CLARK	HERITAGE	LIBERTY NORTH	2	1	0	3
548	LEWIS AND CLARK	HERITAGE	LIBERTY NORTH	20	30	47	97
549	SHOAL CREEK	DISCOVERY	LIBERTY	94	71	121	286
551	SHOAL CREEK	DISCOVERY	LIBERTY	83	61	81	225
552	SHOAL CREEK	DISCOVERY	LIBERTY	164	86	130	380
553	SHOAL CREEK	DISCOVERY	LIBERTY	15	6	12	33
555	SHOAL CREEK	DISCOVERY	LIBERTY	21	7	9	37
556	SHOAL CREEK	SOUTH VALLEY	LIBERTY NORTH	90	60	69	219
557	SHOAL CREEK	SOUTH VALLEY	LIBERTY NORTH	58	28	47	133
558	SHOAL CREEK	SOUTH VALLEY	LIBERTY NORTH	99	48	74	221
559	KELLYBROOK	SOUTH VALLEY	LIBERTY NORTH	69	54	92	215
560	KELLYBROOK	SOUTH VALLEY	LIBERTY NORTH	81	38	60	179
561	LEWIS AND CLARK	SOUTH VALLEY	LIBERTY NORTH	13	9	8	30
562	LEWIS AND CLARK	SOUTH VALLEY	LIBERTY NORTH	21	15	14	50
563	LEWIS AND CLARK	SOUTH VALLEY	LIBERTY NORTH	37	26	18	81
564	ALEXANDER DONIPHAN	DISCOVERY	LIBERTY	3	2	8	13
565	ALEXANDER DONIPHAN	DISCOVERY	LIBERTY	13	5	9	27
566	ALEXANDER DONIPHAN	DISCOVERY	LIBERTY	9	1	4	14
567	ALEXANDER DONIPHAN	DISCOVERY	LIBERTY	3	1	3	7
568	ALEXANDER DONIPHAN	LIBERTY	LIBERTY	47	26	57	130
569	ALEXANDER DONIPHAN	LIBERTY	LIBERTY	8	3	4	15
571	ALEXANDER DONIPHAN	DISCOVERY	LIBERTY	10	7	10	27
572	ALEXANDER DONIPHAN	DISCOVERY	LIBERTY	21	20	17	58
573	ALEXANDER DONIPHAN	DISCOVERY	LIBERTY	25	19	27	71
574	MANOR HILL	LIBERTY	LIBERTY	14	16	26	56
575	ALEXANDER DONIPHAN	LIBERTY	LIBERTY	33	23	41	97
580	LEWIS AND CLARK	HERITAGE	LIBERTY NORTH	15	16	33	64
581	LEWIS AND CLARK	HERITAGE	LIBERTY NORTH	33	24	27	84
582	LEWIS AND CLARK	HERITAGE	LIBERTY NORTH	19	13	18	50
583	LEWIS AND CLARK	HERITAGE	LIBERTY NORTH	16	11	15	42
584	WARREN HILLS	HERITAGE	LIBERTY NORTH	30	23	38	91
585	RIDGEVIEW	HERITAGE	LIBERTY NORTH	11	7	11	29
586	RIDGEVIEW	HERITAGE	LIBERTY NORTH	8	4	7	19
589	RIDGEVIEW	HERITAGE	LIBERTY NORTH	21	14	32	67
590	FRANKLIN	HERITAGE	LIBERTY NORTH	26	12	27	65
592	FRANKLIN	HERITAGE	LIBERTY NORTH	13	9	13	35
593	FRANKLIN	HERITAGE	LIBERTY NORTH	18	7	10	35
594	FRANKLIN	HERITAGE	LIBERTY NORTH	9	7	9	25
595	FRANKLIN	HERITAGE	LIBERTY NORTH	1	2	7	10
596	RIDGEVIEW	HERITAGE	LIBERTY NORTH	12	2	14	28
597	RIDGEVIEW	HERITAGE	LIBERTY NORTH	9	10	16	35
598	RIDGEVIEW	HERITAGE	LIBERTY NORTH	8	3	10	21
599	RIDGEVIEW	HERITAGE	LIBERTY NORTH	0	1	3	4
600	RIDGEVIEW	HERITAGE	LIBERTY NORTH	12	5	3	20

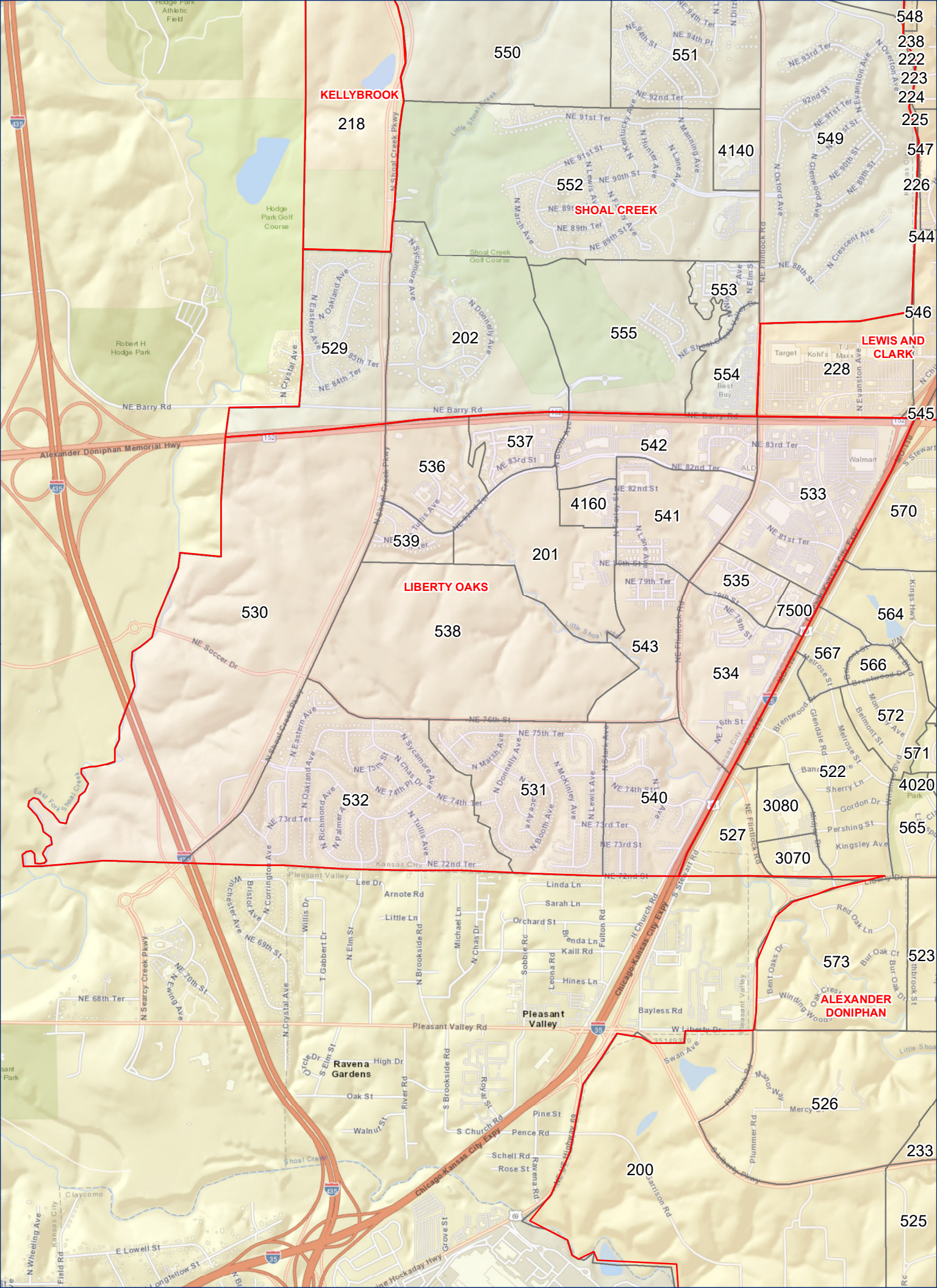
PA	ELEM_NAME	MID_NAME	HIGH_NAME	ELEM	MID	HIGH	TOT_STUD
601	RIDGEVIEW	HERITAGE	LIBERTY NORTH	2	0	0	2
602	RIDGEVIEW	HERITAGE	LIBERTY NORTH	7	3	4	14
603	RIDGEVIEW	HERITAGE	LIBERTY NORTH	7	5	5	17
604	RIDGEVIEW	HERITAGE	LIBERTY NORTH	8	4	5	17
605	FRANKLIN	HERITAGE	LIBERTY NORTH	8	4	4	16
606	RIDGEVIEW	HERITAGE	LIBERTY NORTH	2	1	1	4
607	LEWIS AND CLARK	HERITAGE	LIBERTY NORTH	25	10	24	59
609	LEWIS AND CLARK	HERITAGE	LIBERTY NORTH	38	26	34	98
610	LEWIS AND CLARK	HERITAGE	LIBERTY NORTH	1	0	1	2
612	LEWIS AND CLARK	HERITAGE	LIBERTY NORTH	1	1	6	8
614	LEWIS AND CLARK	HERITAGE	LIBERTY NORTH	5	2	6	13
615	LEWIS AND CLARK	HERITAGE	LIBERTY NORTH	0	2	0	2
618	LEWIS AND CLARK	HERITAGE	LIBERTY NORTH	35	13	30	78
619	LEWIS AND CLARK	HERITAGE	LIBERTY NORTH	4	2	4	10
620	FRANKLIN	HERITAGE	LIBERTY NORTH	21	16	19	56
621	LILLIAN SCHUMACHER	LIBERTY	LIBERTY	5	9	3	17
622	LILLIAN SCHUMACHER	LIBERTY	LIBERTY	3	0	4	7
623	LILLIAN SCHUMACHER	LIBERTY	LIBERTY	2	3	1	6
624	LILLIAN SCHUMACHER	LIBERTY	LIBERTY	1	2	4	7
625	LILLIAN SCHUMACHER	LIBERTY	LIBERTY	6	5	10	21
627	LILLIAN SCHUMACHER	LIBERTY	LIBERTY	62	35	59	156
628	LILLIAN SCHUMACHER	LIBERTY	LIBERTY	48	26	40	114
629	LILLIAN SCHUMACHER	LIBERTY	LIBERTY	56	45	62	163
630	LILLIAN SCHUMACHER	LIBERTY	LIBERTY	75	40	63	178
632	LILLIAN SCHUMACHER	LIBERTY	LIBERTY	44	24	43	111
633	LILLIAN SCHUMACHER	LIBERTY	LIBERTY	30	25	38	93
634	LILLIAN SCHUMACHER	LIBERTY	LIBERTY	6	2	1	9
635	LILLIAN SCHUMACHER	LIBERTY	LIBERTY	21	21	20	62
636	LILLIAN SCHUMACHER	LIBERTY	LIBERTY	25	17	15	57
637	LILLIAN SCHUMACHER	LIBERTY	LIBERTY	4	0	2	6
638	LILLIAN SCHUMACHER	LIBERTY	LIBERTY	3	2	0	5
639	LILLIAN SCHUMACHER	LIBERTY	LIBERTY	6	2	2	10
640	FRANKLIN	HERITAGE	LIBERTY NORTH	2	1	2	5
641	FRANKLIN	HERITAGE	LIBERTY NORTH	9	3	8	20
642	SHOAL CREEK	SOUTH VALLEY	LIBERTY NORTH	34	14	23	71
643	SHOAL CREEK	SOUTH VALLEY	LIBERTY NORTH	42	20	43	105











KELLYBROOK

218

550

551

4140

549

552

SHOAL CREEK

553

555

554

228

LEWIS AND CLARK

202

529

NE Barry Rd

NE Barry Rd

NE Barry Rd

Alexander Doniphan Memorial Hwy

537

542

536

539

201

4160

541

533

570

530

LIBERTY OAKS

538

543

7500

564

567

566

572

571

4020

565

532

531

540

534

3080

527

3070

573

ALEXANDER DONIPHAN

523

526

233

525

200

Ravena Gardens

Pleasant Valley

High Dr

Oak St

Walnut St

River Rd

S Brookside Rd

S Church Rd

Schell Rd

Rose St

Ravena Rd

Grove St

Rockaway Hwy

NE 72nd St

NE 74th St

NE 76th St

NE 78th St

NE 80th St

NE 82nd St

NE 84th St

NE 86th St

NE 88th St

NE 90th St

NE 92nd St

NE 94th St

NE 96th St

NE 98th St

NE 100th St

NE 102nd St

NE 104th St

NE 106th St

NE 108th St

NE 110th St

NE 112th St

NE 114th St

NE 116th St

NE 118th St

NE 120th St

NE 122nd St

NE 124th St

NE 126th St

NE 128th St

NE 130th St

NE 132nd St

NE 134th St

NE 136th St

NE 138th St

NE 140th St

NE 142nd St

NE 144th St

NE 146th St

NE 148th St

NE 150th St

NE 152nd St

NE 154th St

NE 156th St

NE 158th St

NE 160th St

NE 162nd St

NE 164th St

NE 166th St

NE 168th St

NE 170th St

NE 172nd St

NE 174th St

NE 176th St

NE 178th St

NE 180th St

NE 182nd St

NE 184th St

NE 186th St

NE 188th St

NE 190th St

NE 192nd St

NE 194th St

NE 196th St

NE 198th St

NE 200th St

NE 202nd St

NE 204th St

NE 206th St

NE 208th St

NE 210th St

NE 212th St

NE 214th St

NE 216th St

NE 218th St

NE 220th St

NE 222nd St

NE 224th St

NE 226th St

NE 228th St

NE 230th St

NE 232nd St

NE 234th St

NE 236th St

NE 238th St

NE 240th St

NE 242nd St

NE 244th St

NE 246th St

NE 248th St

NE 250th St

NE 252nd St

NE 254th St

NE 256th St

NE 258th St

NE 260th St

NE 262nd St

NE 264th St

NE 266th St

NE 268th St

NE 270th St

NE 272nd St

NE 274th St

NE 276th St

NE 278th St

NE 280th St

NE 282nd St

NE 284th St

NE 286th St

NE 288th St

NE 290th St

NE 292nd St

NE 294th St

NE 296th St

NE 298th St

NE 300th St

NE 302nd St

NE 304th St

NE 306th St

NE 308th St

NE 310th St

NE 312th St

NE 314th St

NE 316th St

NE 318th St

NE 320th St

NE 322nd St

NE 324th St

NE 326th St

NE 328th St

NE 330th St

NE 332nd St

NE 334th St

NE 336th St

NE 338th St

NE 340th St

NE 342nd St

NE 344th St

NE 346th St

NE 348th St

NE 350th St

NE 352nd St

NE 354th St

NE 356th St

NE 358th St

NE 360th St

NE 362nd St

NE 364th St

NE 366th St

NE 368th St

NE 370th St

NE 372nd St

NE 374th St

NE 376th St

NE 378th St

NE 380th St

NE 382nd St

NE 384th St

NE 386th St

NE 388th St

NE 390th St

NE 392nd St

NE 394th St

NE 396th St

NE 398th St

NE 400th St

NE 402nd St

NE 404th St

NE 406th St

NE 408th St

NE 410th St

NE 412th St

NE 414th St

NE 416th St

NE 418th St

NE 420th St

NE 422nd St

NE 424th St

NE 426th St

NE 428th St

NE 430th St

NE 432nd St

NE 434th St

NE 436th St

NE 438th St

NE 440th St

NE 442nd St

NE 444th St

NE 446th St

NE 448th St

NE 450th St

NE 452nd St

NE 454th St

NE 456th St

NE 458th St

NE 460th St

NE 462nd St

NE 464th St

NE 466th St

NE 468th St

NE 470th St

NE 472nd St

NE 474th St

NE 476th St

NE 478th St

NE 480th St

NE 482nd St

NE 484th St

NE 486th St

NE 488th St

NE 490th St

NE 492nd St

NE 494th St

NE 496th St

NE 498th St

NE 500th St

NE 502nd St

NE 504th St

NE 506th St

NE 508th St

NE 510th St

NE 512th St

NE 514th St

NE 516th St

NE 518th St

NE 520th St

NE 522nd St

NE 524th St

NE 526th St

NE 528th St

NE 530th St

NE 532nd St

NE 534th St

NE 536th St

NE 538th St

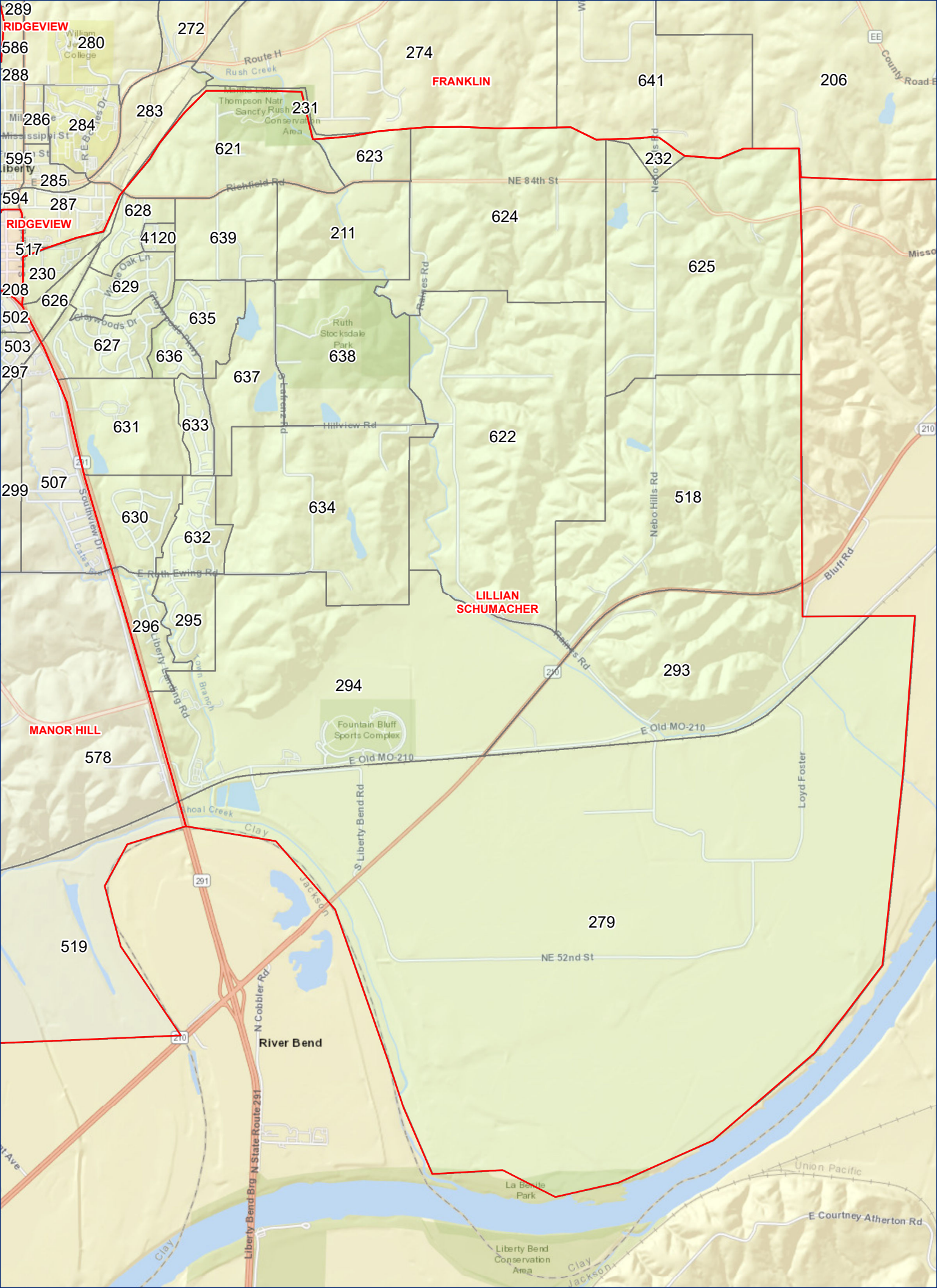
NE 540th St

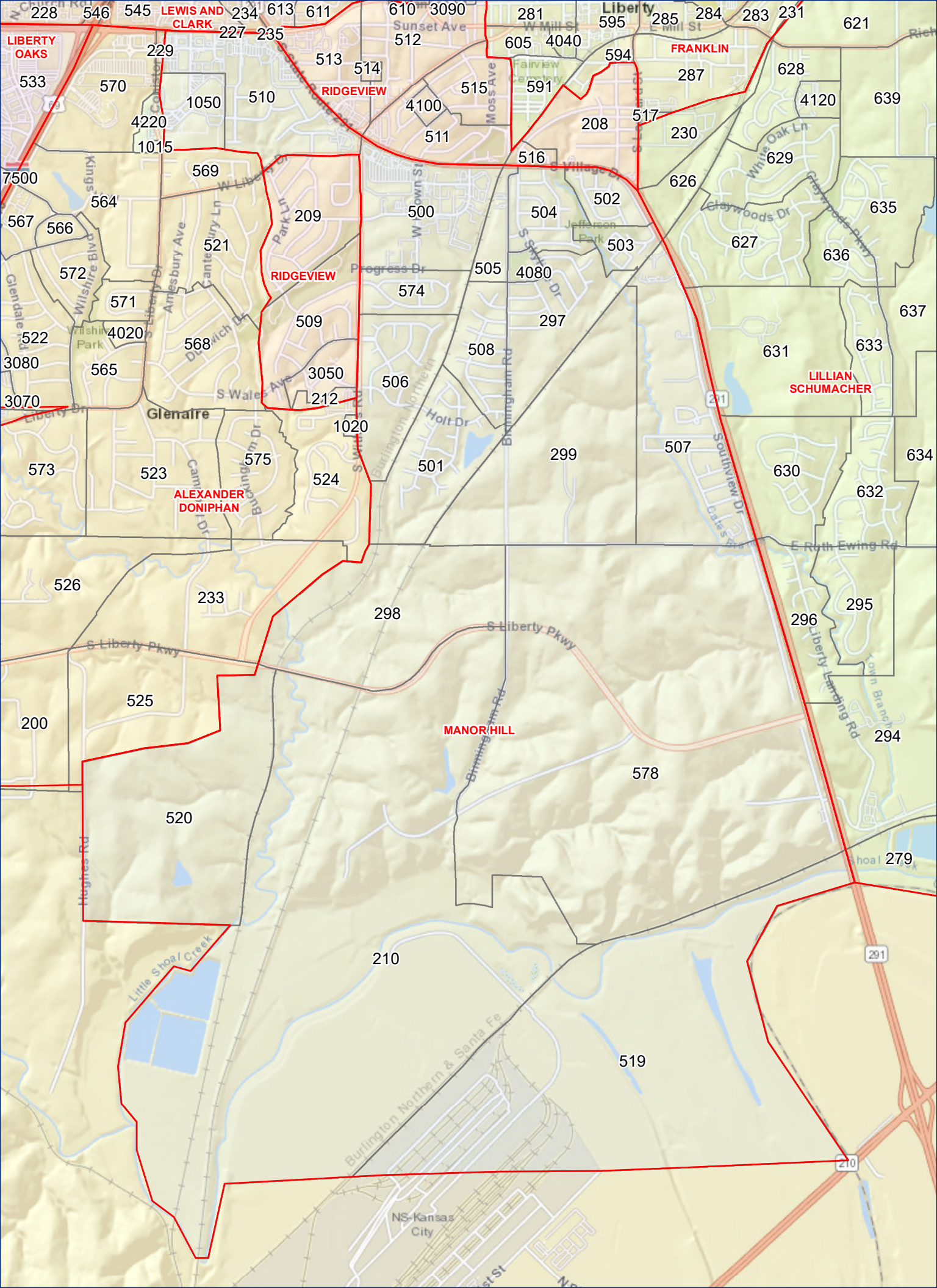
NE 542nd St

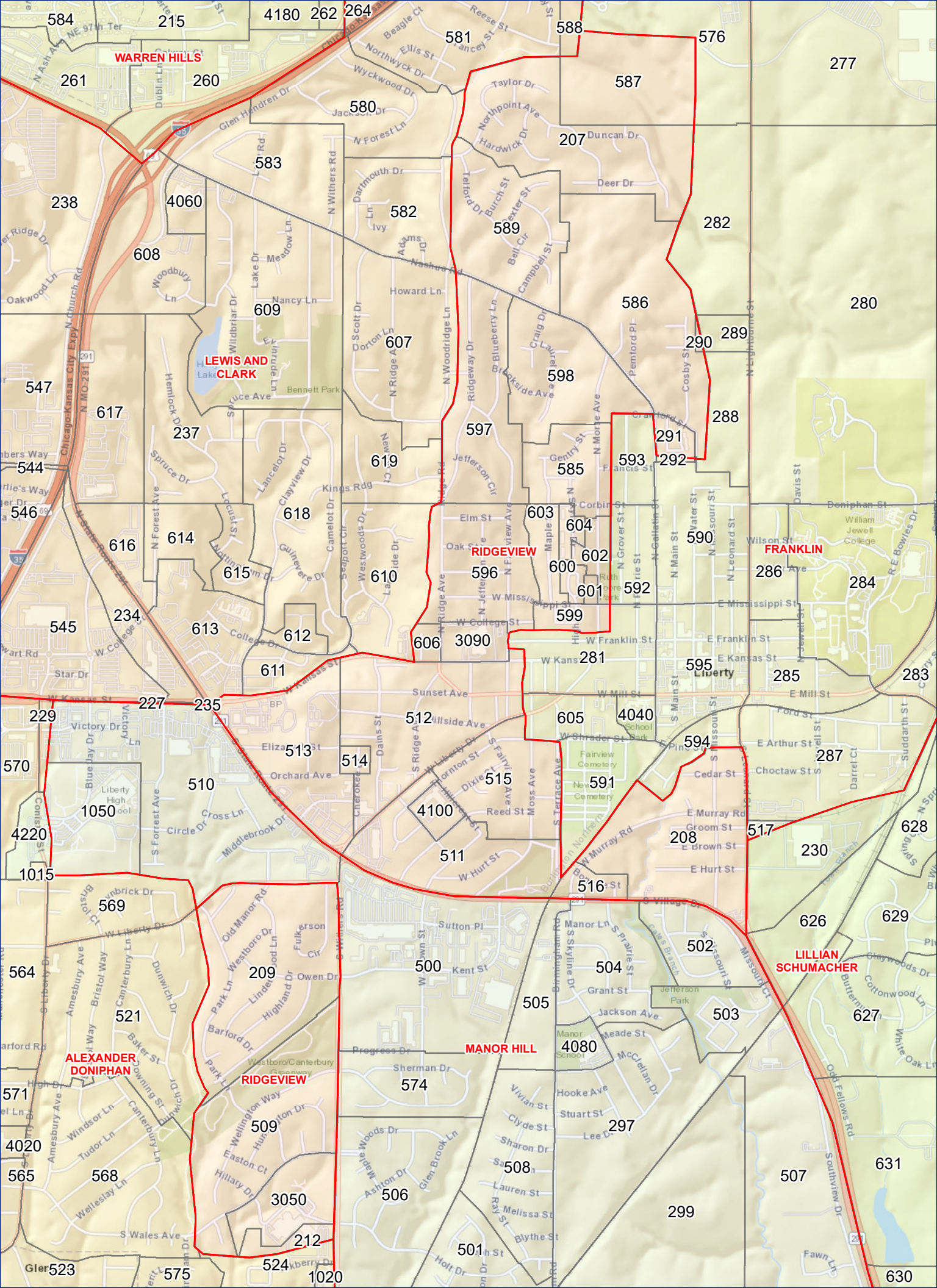
NE 544th St

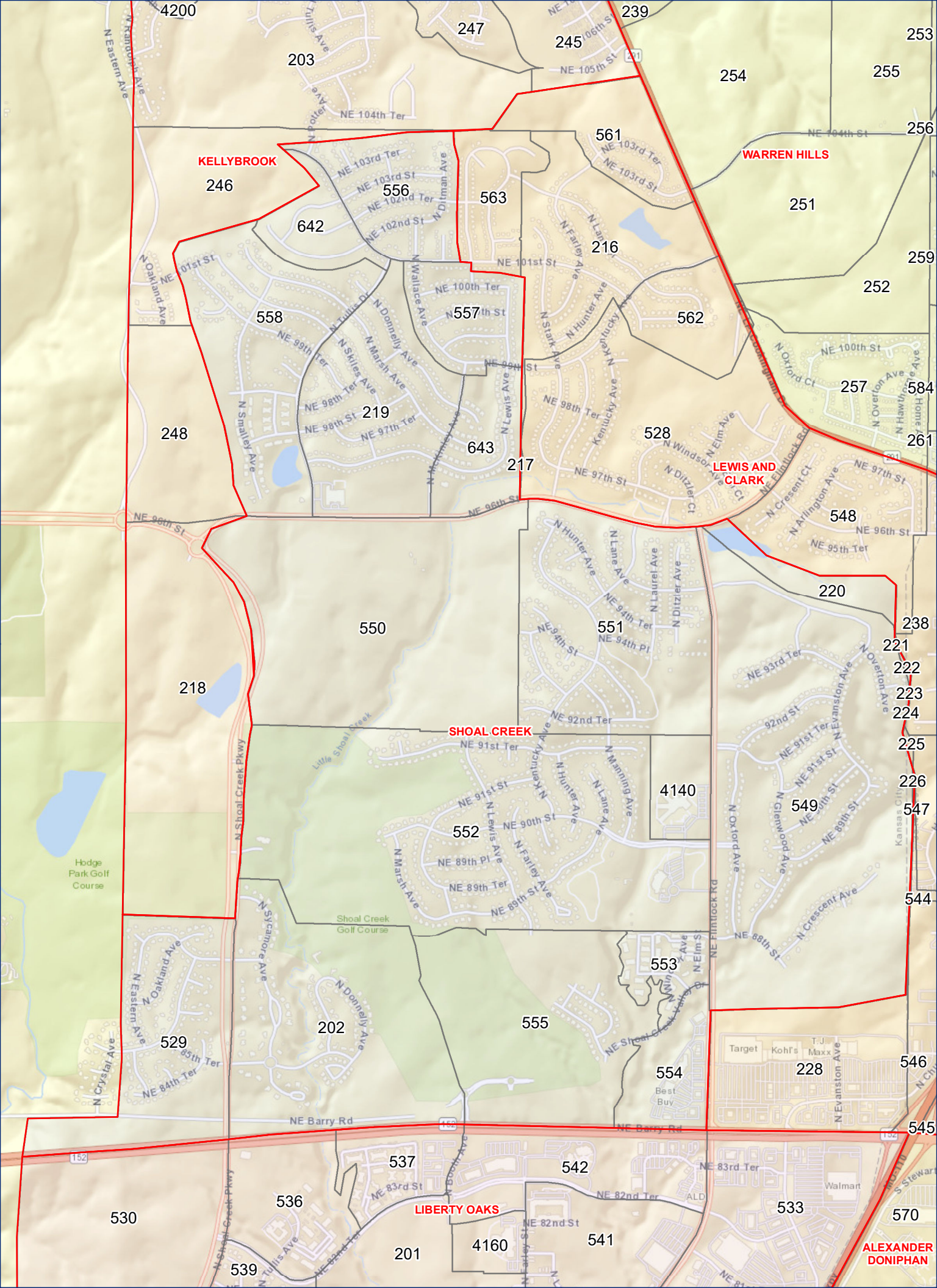
NE 546th St

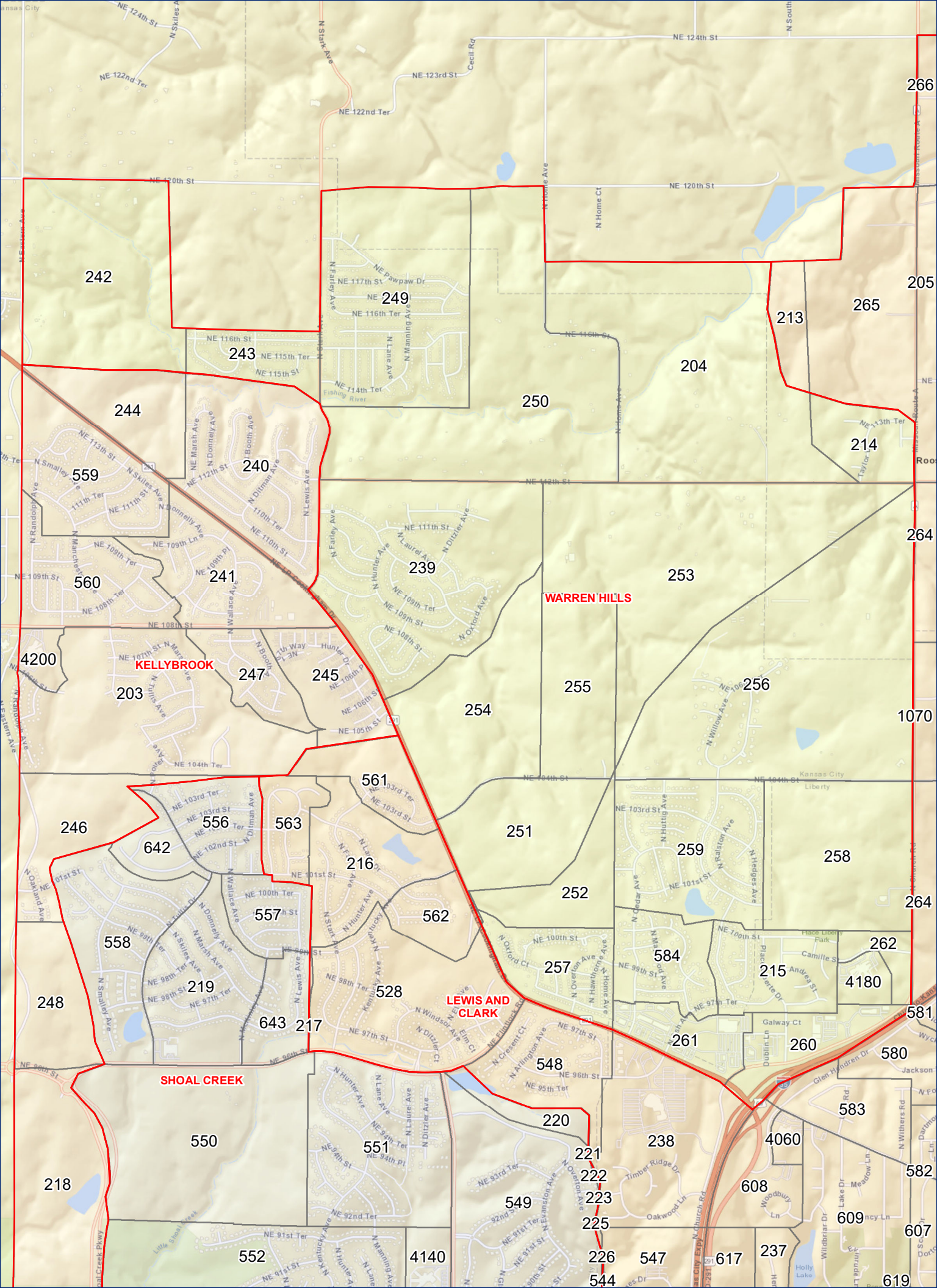
NE 548th St













Liberty PS Attend/Reside Report

LIBERTY PS

Student Distribution by Attending Campus

ELEM															
SCHOOL	EE PK	KG	1ST	2ND	3RD	4TH	5TH	6TH	7TH	8TH	9TH	10TH	11TH	12TH	TOTAL
ALEXANDER DONIPHAN ELEM	0	52	45	59	59	56	67	0	0	0	0	0	0	0	338
ECEC	316	0	0	0	0	0	0	0	0	0	0	0	0	0	316
EPIC ELEM	0	48	48	50	49	46	49	0	0	0	0	0	0	0	290
FRANKLIN ELEM	0	51	39	37	37	45	47	0	0	0	0	0	0	0	256
KELLYBROOK ELEM	0	76	84	91	97	95	102	0	0	0	0	0	0	0	545
LEWIS AND CLARK ELEM	0	73	84	88	90	90	120	0	0	0	0	0	0	0	545
LIBERTY OAKS ELEM	0	73	84	78	93	75	108	0	0	0	0	0	0	0	511
LILLIAN SCHUMACHER ELEM	0	65	76	72	85	84	75	0	0	0	0	0	0	0	457
MANOR HILL ELEM	0	41	47	48	43	52	67	0	0	0	0	0	0	0	298
RIDGEVIEW ELEM	0	50	50	63	51	68	63	0	0	0	0	0	0	0	345
SHOAL CREEK ELEM	0	124	124	120	160	165	178	0	0	0	0	0	0	0	871
WARREN HILLS ELEM	0	104	97	115	103	101	103	0	0	0	0	0	0	0	623
ELEM TOTAL	316	757	778	821	867	877	979	0	0	0	0	0	0	0	5,395
MID															
SCHOOL	EE PK	KG	1ST	2ND	3RD	4TH	5TH	6TH	7TH	8TH	9TH	10TH	11TH	12TH	TOTAL
DISCOVERY MID	0	0	0	0	0	0	0	212	211	244	0	0	0	0	667
HERITAGE MID	0	0	0	0	0	0	0	263	242	253	0	0	0	0	758
LIBERTY MID	0	0	0	0	0	0	0	189	210	198	0	0	0	0	597
SOUTH VALLEY MID	0	0	0	0	0	0	0	269	277	256	0	0	0	0	802
MID TOTAL	0	0	0	0	0	0	0	933	940	951	0	0	0	0	2,824
HIGH															
SCHOOL	EE PK	KG	1ST	2ND	3RD	4TH	5TH	6TH	7TH	8TH	9TH	10TH	11TH	12TH	TOTAL
LIBERTY HIGH	0	0	0	0	0	0	0	0	0	0	430	500	474	494	1,898
LIBERTY NORTH	0	0	0	0	0	0	0	0	0	0	580	617	523	609	2,329
HIGH TOTAL	0	0	0	0	0	0	0	0	0	0	1,010	1,117	997	1,103	4,227
	EE PK	KG	1ST	2ND	3RD	4TH	5TH	6TH	7TH	8TH	9TH	10TH	11TH	12TH	TOTAL
LIBERTY PS TOTAL	316	757	778	821	867	877	979	933	940	951	1,010	1,117	997	1,103	12,446

LIBERTY PS

Student Distribution by Place of Residence

ELEM															
SCHOOL	EE PK	KG	1ST	2ND	3RD	4TH	5TH	6TH	7TH	8TH	9TH	10TH	11TH	12TH	TOTAL
ALEXANDER DONIPHAN ELEM	24	57	50	60	65	58	72	0	0	0	0	0	0	0	386
FRANKLIN ELEM	16	52	42	40	41	45	46	0	0	0	0	0	0	0	282
KELLYBROOK ELEM	45	81	95	96	102	108	111	0	0	0	0	0	0	0	638
LEWIS AND CLARK ELEM	24	78	90	96	103	99	127	0	0	0	0	0	0	0	617
LIBERTY OAKS ELEM	38	80	88	78	97	78	109	0	0	0	0	0	0	0	568
LILLIAN SCHUMACHER ELEM	37	65	80	81	84	90	75	0	0	0	0	0	0	0	512
MANOR HILL ELEM	25	42	42	48	46	48	64	0	0	0	0	0	0	0	315
OUT OF DISTRICT	3	4	4	6	7	3	5	0	0	0	0	0	0	0	32
RIDGEVIEW ELEM	26	63	58	67	58	81	73	0	0	0	0	0	0	0	426
SHOAL CREEK ELEM	41	131	130	136	160	168	190	0	0	0	0	0	0	0	956
UNMATCHED	0	0	0	0	1	0	2	0	0	0	0	0	0	0	3
WARREN HILLS ELEM	37	104	99	113	103	99	105	0	0	0	0	0	0	0	660
ELEM TOTAL	316	757	778	821	867	877	979	0	0	0	0	0	0	0	5,395

MID															
SCHOOL	EE PK	KG	1ST	2ND	3RD	4TH	5TH	6TH	7TH	8TH	9TH	10TH	11TH	12TH	TOTAL
DISCOVERY MID	0	0	0	0	0	0	0	205	207	241	0	0	0	0	653
HERITAGE MID	0	0	0	0	0	0	0	256	241	251	0	0	0	0	748
LIBERTY MID	0	0	0	0	0	0	0	192	212	201	0	0	0	0	605
OUT OF DISTRICT	0	0	0	0	0	0	0	5	2	3	0	0	0	0	10
SOUTH VALLEY MID	0	0	0	0	0	0	0	275	278	254	0	0	0	0	807
UNMATCHED	0	0	0	0	0	0	0	0	0	1	0	0	0	0	1
MID TOTAL	0	0	0	0	0	0	0	933	940	951	0	0	0	0	2,824

HIGH															
SCHOOL	EE PK	KG	1ST	2ND	3RD	4TH	5TH	6TH	7TH	8TH	9TH	10TH	11TH	12TH	TOTAL
LIBERTY HIGH	0	0	0	0	0	0	0	0	0	0	430	487	466	477	1,860
LIBERTY NORTH	0	0	0	0	0	0	0	0	0	0	576	624	523	611	2,334
OUT OF DISTRICT	0	0	0	0	0	0	0	0	0	0	4	6	7	14	31
UNMATCHED	0	0	0	0	0	0	0	0	0	0	0	0	1	1	2
HIGH TOTAL	0	0	0	0	0	0	0	0	0	0	1,010	1,117	997	1,103	4,227

	EE PK	KG	1ST	2ND	3RD	4TH	5TH	6TH	7TH	8TH	9TH	10TH	11TH	12TH	TOTAL
LIBERTY PS TOTAL	316	757	778	821	867	877	979	933	940	951	1,010	1,117	997	1,103	12,446

Note: Reside is determined by what attendance boundary the student's address is located. Only schools that have a designated attendance boundary are used. Addresses that are mapped outside the district are assigned to "OUT OF DISTRICT". Addresses that are unable to be located are assigned to the attending campus.

LIBERTY PS

Attend Incoming Report

ALEXANDER DONIPHAN ELEM															
RESIDE	EE PK	KG	1ST	2ND	3RD	4TH	5TH	6TH	7TH	8TH	9TH	10TH	11TH	12TH	TOTAL
ALEXANDER DONIPHAN ELEM	0	49	41	55	54	51	64	0	0	0	0	0	0	0	314
FRANKLIN ELEM	0	1	0	0	0	0	0	0	0	0	0	0	0	0	1
KELLYBROOK ELEM	0	0	0	0	0	0	1	0	0	0	0	0	0	0	1
LEWIS AND CLARK ELEM	0	0	0	1	0	1	0	0	0	0	0	0	0	0	2
LIBERTY OAKS ELEM	0	0	0	0	0	0	2	0	0	0	0	0	0	0	2
LILLIAN SCHUMACHER ELEM	0	0	0	1	0	0	0	0	0	0	0	0	0	0	1
MANOR HILL ELEM	0	0	0	1	2	2	0	0	0	0	0	0	0	0	5
OUT OF DISTRICT	0	0	2	0	2	0	0	0	0	0	0	0	0	0	4
RIDGEVIEW ELEM	0	1	0	0	0	1	0	0	0	0	0	0	0	0	2
SHOAL CREEK ELEM	0	0	1	1	0	1	0	0	0	0	0	0	0	0	3
WARREN HILLS ELEM	0	1	1	0	1	0	0	0	0	0	0	0	0	0	3
ALEXANDER DONIPHAN ELEM TOTAL	0	52	45	59	59	56	67	0	0	0	0	0	0	0	338

ECEC															
RESIDE	EE PK	KG	1ST	2ND	3RD	4TH	5TH	6TH	7TH	8TH	9TH	10TH	11TH	12TH	TOTAL
ALEXANDER DONIPHAN ELEM	24	0	0	0	0	0	0	0	0	0	0	0	0	0	24
FRANKLIN ELEM	16	0	0	0	0	0	0	0	0	0	0	0	0	0	16
KELLYBROOK ELEM	45	0	0	0	0	0	0	0	0	0	0	0	0	0	45
LEWIS AND CLARK ELEM	24	0	0	0	0	0	0	0	0	0	0	0	0	0	24
LIBERTY OAKS ELEM	38	0	0	0	0	0	0	0	0	0	0	0	0	0	38
LILLIAN SCHUMACHER ELEM	37	0	0	0	0	0	0	0	0	0	0	0	0	0	37
MANOR HILL ELEM	25	0	0	0	0	0	0	0	0	0	0	0	0	0	25
OUT OF DISTRICT	3	0	0	0	0	0	0	0	0	0	0	0	0	0	3
RIDGEVIEW ELEM	26	0	0	0	0	0	0	0	0	0	0	0	0	0	26
SHOAL CREEK ELEM	41	0	0	0	0	0	0	0	0	0	0	0	0	0	41
WARREN HILLS ELEM	37	0	0	0	0	0	0	0	0	0	0	0	0	0	37
ECEC TOTAL	316	0	0	0	0	0	0	0	0	0	0	0	0	0	316

Note: Details the distribution of students who ATTEND the designated school and the actual attendance zone of the students place of residence, by grade level.

LIBERTY PS

Attend Incoming Report

EPIC ELEM															
RESIDE	EE PK	KG	1ST	2ND	3RD	4TH	5TH	6TH	7TH	8TH	9TH	10TH	11TH	12TH	TOTAL
ALEXANDER DONIPHAN ELEM	0	6	5	3	6	3	3	0	0	0	0	0	0	0	26
FRANKLIN ELEM	0	0	0	5	3	3	2	0	0	0	0	0	0	0	13
KELLYBROOK ELEM	0	3	6	3	3	6	3	0	0	0	0	0	0	0	24
LEWIS AND CLARK ELEM	0	6	6	6	5	6	4	0	0	0	0	0	0	0	33
LIBERTY OAKS ELEM	0	6	6	3	4	3	4	0	0	0	0	0	0	0	26
LILLIAN SCHUMACHER ELEM	0	5	4	5	6	7	4	0	0	0	0	0	0	0	31
MANOR HILL ELEM	0	4	2	3	4	4	3	0	0	0	0	0	0	0	20
RIDGEVIEW ELEM	0	3	6	4	7	4	12	0	0	0	0	0	0	0	36
SHOAL CREEK ELEM	0	9	7	11	5	6	11	0	0	0	0	0	0	0	49
WARREN HILLS ELEM	0	6	6	7	6	4	3	0	0	0	0	0	0	0	32
EPIC ELEM TOTAL	0	48	48	50	49	46	49	0	0	0	0	0	0	0	290
FRANKLIN ELEM															
RESIDE	EE PK	KG	1ST	2ND	3RD	4TH	5TH	6TH	7TH	8TH	9TH	10TH	11TH	12TH	TOTAL
FRANKLIN ELEM	0	46	36	32	32	41	41	0	0	0	0	0	0	0	228
LEWIS AND CLARK ELEM	0	1	1	2	2	0	2	0	0	0	0	0	0	0	8
LILLIAN SCHUMACHER ELEM	0	2	0	0	1	0	1	0	0	0	0	0	0	0	4
OUT OF DISTRICT	0	0	1	1	1	1	2	0	0	0	0	0	0	0	6
RIDGEVIEW ELEM	0	2	1	2	1	2	1	0	0	0	0	0	0	0	9
WARREN HILLS ELEM	0	0	0	0	0	1	0	0	0	0	0	0	0	0	1
FRANKLIN ELEM TOTAL	0	51	39	37	37	45	47	0	0	0	0	0	0	0	256

Note: Details the distribution of students who ATTEND the designated school and the actual attendance zone of the students place of residence, by grade level.

LIBERTY PS

Attend Incoming Report

KELLYBROOK ELEM															
RESIDE	EE PK	KG	1ST	2ND	3RD	4TH	5TH	6TH	7TH	8TH	9TH	10TH	11TH	12TH	TOTAL
KELLYBROOK ELEM	0	72	80	87	93	94	97	0	0	0	0	0	0	0	523
LEWIS AND CLARK ELEM	0	1	2	2	2	0	1	0	0	0	0	0	0	0	8
LILLIAN SCHUMACHER ELEM	0	0	0	1	0	0	0	0	0	0	0	0	0	0	1
OUT OF DISTRICT	0	1	1	0	1	0	0	0	0	0	0	0	0	0	3
RIDGEVIEW ELEM	0	1	0	0	0	0	0	0	0	0	0	0	0	0	1
SHOAL CREEK ELEM	0	1	1	0	1	1	2	0	0	0	0	0	0	0	6
UNMATCHED	0	0	0	0	0	0	1	0	0	0	0	0	0	0	1
WARREN HILLS ELEM	0	0	0	1	0	0	1	0	0	0	0	0	0	0	2
KELLYBROOK ELEM TOTAL	0	76	84	91	97	95	102	0	0	0	0	0	0	0	545
LEWIS AND CLARK ELEM															
RESIDE	EE PK	KG	1ST	2ND	3RD	4TH	5TH	6TH	7TH	8TH	9TH	10TH	11TH	12TH	TOTAL
ALEXANDER DONIPHAN ELEM	0	0	1	1	0	0	0	0	0	0	0	0	0	0	2
FRANKLIN ELEM	0	0	0	0	2	0	1	0	0	0	0	0	0	0	3
KELLYBROOK ELEM	0	0	2	0	0	0	0	0	0	0	0	0	0	0	2
LEWIS AND CLARK ELEM	0	67	74	82	86	86	113	0	0	0	0	0	0	0	508
LIBERTY OAKS ELEM	0	1	0	0	1	0	0	0	0	0	0	0	0	0	2
MANOR HILL ELEM	0	1	0	0	0	0	0	0	0	0	0	0	0	0	1
OUT OF DISTRICT	0	0	0	3	1	1	1	0	0	0	0	0	0	0	6
RIDGEVIEW ELEM	0	4	4	1	0	1	2	0	0	0	0	0	0	0	12
SHOAL CREEK ELEM	0	0	0	0	0	1	2	0	0	0	0	0	0	0	3
WARREN HILLS ELEM	0	0	3	1	0	1	1	0	0	0	0	0	0	0	6
LEWIS AND CLARK ELEM TOTAL	0	73	84	88	90	90	120	0	0	0	0	0	0	0	545

Note: Details the distribution of students who ATTEND the designated school and the actual attendance zone of the students place of residence, by grade level.

LIBERTY PS

Attend Incoming Report

LIBERTY OAKS ELEM															
RESIDE	EE PK	KG	1ST	2ND	3RD	4TH	5TH	6TH	7TH	8TH	9TH	10TH	11TH	12TH	TOTAL
ALEXANDER DONIPHAN ELEM	0	2	0	0	2	0	1	0	0	0	0	0	0	0	5
FRANKLIN ELEM	0	1	1	1	0	0	0	0	0	0	0	0	0	0	3
KELLYBROOK ELEM	0	0	0	0	1	0	1	0	0	0	0	0	0	0	2
LEWIS AND CLARK ELEM	0	0	0	0	0	1	0	0	0	0	0	0	0	0	1
LIBERTY OAKS ELEM	0	69	81	72	88	73	102	0	0	0	0	0	0	0	485
MANOR HILL ELEM	0	0	0	1	0	0	0	0	0	0	0	0	0	0	1
OUT OF DISTRICT	0	1	0	1	1	0	0	0	0	0	0	0	0	0	3
RIDGEVIEW ELEM	0	0	1	0	0	0	1	0	0	0	0	0	0	0	2
SHOAL CREEK ELEM	0	0	1	3	1	1	2	0	0	0	0	0	0	0	8
WARREN HILLS ELEM	0	0	0	0	0	0	1	0	0	0	0	0	0	0	1
LIBERTY OAKS ELEM TOTAL	0	73	84	78	93	75	108	0	0	0	0	0	0	0	511
LILLIAN SCHUMACHER ELEM															
RESIDE	EE PK	KG	1ST	2ND	3RD	4TH	5TH	6TH	7TH	8TH	9TH	10TH	11TH	12TH	TOTAL
ALEXANDER DONIPHAN ELEM	0	0	0	0	2	1	1	0	0	0	0	0	0	0	4
FRANKLIN ELEM	0	1	3	1	1	0	2	0	0	0	0	0	0	0	8
KELLYBROOK ELEM	0	0	1	0	0	0	0	0	0	0	0	0	0	0	1
LEWIS AND CLARK ELEM	0	1	0	0	2	0	1	0	0	0	0	0	0	0	4
LIBERTY OAKS ELEM	0	1	0	0	1	0	1	0	0	0	0	0	0	0	3
LILLIAN SCHUMACHER ELEM	0	58	72	69	76	82	68	0	0	0	0	0	0	0	425
MANOR HILL ELEM	0	0	0	1	1	0	0	0	0	0	0	0	0	0	2
OUT OF DISTRICT	0	0	0	1	1	0	1	0	0	0	0	0	0	0	3
RIDGEVIEW ELEM	0	2	0	0	0	1	1	0	0	0	0	0	0	0	4
WARREN HILLS ELEM	0	2	0	0	1	0	0	0	0	0	0	0	0	0	3
LILLIAN SCHUMACHER ELEM TOTAL	0	65	76	72	85	84	75	0	0	0	0	0	0	0	457

Note: Details the distribution of students who ATTEND the designated school and the actual attendance zone of the students place of residence, by grade level.

LIBERTY PS

Attend Incoming Report

MANOR HILL ELEM															
RESIDE	EE PK	KG	1ST	2ND	3RD	4TH	5TH	6TH	7TH	8TH	9TH	10TH	11TH	12TH	TOTAL
ALEXANDER DONIPHAN ELEM	0	0	0	1	0	2	1	0	0	0	0	0	0	0	4
FRANKLIN ELEM	0	1	1	0	0	1	0	0	0	0	0	0	0	0	3
KELLYBROOK ELEM	0	0	0	1	0	1	1	0	0	0	0	0	0	0	3
LEWIS AND CLARK ELEM	0	0	1	1	0	0	0	0	0	0	0	0	0	0	2
LIBERTY OAKS ELEM	0	1	1	1	1	0	0	0	0	0	0	0	0	0	4
LILLIAN SCHUMACHER ELEM	0	0	3	3	1	1	2	0	0	0	0	0	0	0	10
MANOR HILL ELEM	0	35	40	40	39	42	59	0	0	0	0	0	0	0	255
OUT OF DISTRICT	0	0	0	0	0	1	0	0	0	0	0	0	0	0	1
RIDGEVIEW ELEM	0	3	1	1	2	4	2	0	0	0	0	0	0	0	13
SHOAL CREEK ELEM	0	1	0	0	0	0	0	0	0	0	0	0	0	0	1
WARREN HILLS ELEM	0	0	0	0	0	0	2	0	0	0	0	0	0	0	2
MANOR HILL ELEM TOTAL	0	41	47	48	43	52	67	0	0	0	0	0	0	0	298

RIDGEVIEW ELEM															
RESIDE	EE PK	KG	1ST	2ND	3RD	4TH	5TH	6TH	7TH	8TH	9TH	10TH	11TH	12TH	TOTAL
ALEXANDER DONIPHAN ELEM	0	0	2	0	1	0	2	0	0	0	0	0	0	0	5
FRANKLIN ELEM	0	2	1	0	2	0	0	0	0	0	0	0	0	0	5
KELLYBROOK ELEM	0	1	0	0	0	0	0	0	0	0	0	0	0	0	1
LEWIS AND CLARK ELEM	0	0	1	1	0	1	4	0	0	0	0	0	0	0	7
LIBERTY OAKS ELEM	0	0	0	2	0	0	0	0	0	0	0	0	0	0	2
LILLIAN SCHUMACHER ELEM	0	0	1	1	0	0	0	0	0	0	0	0	0	0	2
MANOR HILL ELEM	0	1	0	0	0	0	1	0	0	0	0	0	0	0	2
OUT OF DISTRICT	0	2	0	0	0	0	0	0	0	0	0	0	0	0	2
RIDGEVIEW ELEM	0	44	44	57	48	66	54	0	0	0	0	0	0	0	313
SHOAL CREEK ELEM	0	0	1	1	0	0	0	0	0	0	0	0	0	0	2
WARREN HILLS ELEM	0	0	0	1	0	1	2	0	0	0	0	0	0	0	4
RIDGEVIEW ELEM TOTAL	0	50	50	63	51	68	63	0	0	0	0	0	0	0	345

Note: Details the distribution of students who ATTEND the designated school and the actual attendance zone of the students place of residence, by grade level.

LIBERTY PS

Attend Incoming Report

SHOAL CREEK ELEM															
RESIDE	EE PK	KG	1ST	2ND	3RD	4TH	5TH	6TH	7TH	8TH	9TH	10TH	11TH	12TH	TOTAL
ALEXANDER DONIPHAN ELEM	0	0	1	0	0	1	0	0	0	0	0	0	0	0	2
KELLYBROOK ELEM	0	3	3	0	3	4	3	0	0	0	0	0	0	0	16
LEWIS AND CLARK ELEM	0	0	1	0	2	0	0	0	0	0	0	0	0	0	3
LIBERTY OAKS ELEM	0	0	0	0	1	1	0	0	0	0	0	0	0	0	2
RIDGEVIEW ELEM	0	2	0	0	0	1	0	0	0	0	0	0	0	0	3
SHOAL CREEK ELEM	0	119	119	120	153	157	173	0	0	0	0	0	0	0	841
UNMATCHED	0	0	0	0	1	0	1	0	0	0	0	0	0	0	2
WARREN HILLS ELEM	0	0	0	0	0	1	1	0	0	0	0	0	0	0	2

SHOAL CREEK ELEM TOTAL	0	124	124	120	160	165	178	0	0	0	0	0	0	0	871
-------------------------------	----------	------------	------------	------------	------------	------------	------------	----------	----------	----------	----------	----------	----------	----------	------------

WARREN HILLS ELEM															
RESIDE	EE PK	KG	1ST	2ND	3RD	4TH	5TH	6TH	7TH	8TH	9TH	10TH	11TH	12TH	TOTAL
FRANKLIN ELEM	0	0	0	1	1	0	0	0	0	0	0	0	0	0	2
KELLYBROOK ELEM	0	2	3	5	2	3	5	0	0	0	0	0	0	0	20
LEWIS AND CLARK ELEM	0	2	4	1	4	4	2	0	0	0	0	0	0	0	17
LIBERTY OAKS ELEM	0	2	0	0	1	1	0	0	0	0	0	0	0	0	4
LILLIAN SCHUMACHER ELEM	0	0	0	1	0	0	0	0	0	0	0	0	0	0	1
MANOR HILL ELEM	0	1	0	2	0	0	1	0	0	0	0	0	0	0	4
OUT OF DISTRICT	0	0	0	0	0	0	1	0	0	0	0	0	0	0	1
RIDGEVIEW ELEM	0	1	1	2	0	1	0	0	0	0	0	0	0	0	5
SHOAL CREEK ELEM	0	1	0	0	0	1	0	0	0	0	0	0	0	0	2
WARREN HILLS ELEM	0	95	89	103	95	91	94	0	0	0	0	0	0	0	567

WARREN HILLS ELEM TOTAL	0	104	97	115	103	101	103	0	0	0	0	0	0	0	623
--------------------------------	----------	------------	-----------	------------	------------	------------	------------	----------	----------	----------	----------	----------	----------	----------	------------

DISCOVERY MID															
RESIDE	EE PK	KG	1ST	2ND	3RD	4TH	5TH	6TH	7TH	8TH	9TH	10TH	11TH	12TH	TOTAL
DISCOVERY MID	0	0	0	0	0	0	0	203	205	238	0	0	0	0	646
HERITAGE MID	0	0	0	0	0	0	0	1	0	0	0	0	0	0	1
LIBERTY MID	0	0	0	0	0	0	0	6	5	6	0	0	0	0	17
OUT OF DISTRICT	0	0	0	0	0	0	0	2	1	0	0	0	0	0	3

DISCOVERY MID TOTAL	0	0	0	0	0	0	0	212	211	244	0	0	0	0	667
----------------------------	----------	----------	----------	----------	----------	----------	----------	------------	------------	------------	----------	----------	----------	----------	------------

Note: Details the distribution of students who ATTEND the designated school and the actual attendance zone of the students place of residence, by grade level.

LIBERTY PS

Attend Incoming Report

HERITAGE MID															
RESIDE	EE PK	KG	1ST	2ND	3RD	4TH	5TH	6TH	7TH	8TH	9TH	10TH	11TH	12TH	TOTAL
DISCOVERY MID	0	0	0	0	0	0	0	2	0	0	0	0	0	0	2
HERITAGE MID	0	0	0	0	0	0	0	251	237	245	0	0	0	0	733
LIBERTY MID	0	0	0	0	0	0	0	1	0	0	0	0	0	0	1
OUT OF DISTRICT	0	0	0	0	0	0	0	2	0	1	0	0	0	0	3
SOUTH VALLEY MID	0	0	0	0	0	0	0	7	5	7	0	0	0	0	19
HERITAGE MID TOTAL	0	0	0	0	0	0	0	263	242	253	0	0	0	0	758
LIBERTY MID															
RESIDE	EE PK	KG	1ST	2ND	3RD	4TH	5TH	6TH	7TH	8TH	9TH	10TH	11TH	12TH	TOTAL
DISCOVERY MID	0	0	0	0	0	0	0	0	0	2	0	0	0	0	2
HERITAGE MID	0	0	0	0	0	0	0	4	2	2	0	0	0	0	8
LIBERTY MID	0	0	0	0	0	0	0	184	205	193	0	0	0	0	582
OUT OF DISTRICT	0	0	0	0	0	0	0	1	1	1	0	0	0	0	3
SOUTH VALLEY MID	0	0	0	0	0	0	0	0	2	0	0	0	0	0	2
LIBERTY MID TOTAL	0	0	0	0	0	0	0	189	210	198	0	0	0	0	597
SOUTH VALLEY MID															
RESIDE	EE PK	KG	1ST	2ND	3RD	4TH	5TH	6TH	7TH	8TH	9TH	10TH	11TH	12TH	TOTAL
DISCOVERY MID	0	0	0	0	0	0	0	0	2	1	0	0	0	0	3
HERITAGE MID	0	0	0	0	0	0	0	0	2	4	0	0	0	0	6
LIBERTY MID	0	0	0	0	0	0	0	1	2	2	0	0	0	0	5
OUT OF DISTRICT	0	0	0	0	0	0	0	0	0	1	0	0	0	0	1
SOUTH VALLEY MID	0	0	0	0	0	0	0	268	271	247	0	0	0	0	786
UNMATCHED	0	0	0	0	0	0	0	0	0	1	0	0	0	0	1
SOUTH VALLEY MID TOTAL	0	0	0	0	0	0	0	269	277	256	0	0	0	0	802
LIBERTY HIGH															
RESIDE	EE PK	KG	1ST	2ND	3RD	4TH	5TH	6TH	7TH	8TH	9TH	10TH	11TH	12TH	TOTAL
LIBERTY HIGH	0	0	0	0	0	0	0	0	0	0	425	481	461	470	1,837
LIBERTY NORTH	0	0	0	0	0	0	0	0	0	0	4	16	9	14	43
OUT OF DISTRICT	0	0	0	0	0	0	0	0	0	0	1	3	3	10	17
UNMATCHED	0	0	0	0	0	0	0	0	0	0	0	0	1	0	1
LIBERTY HIGH TOTAL	0	0	0	0	0	0	0	0	0	0	430	500	474	494	1,898

Note: Details the distribution of students who ATTEND the designated school and the actual attendance zone of the students place of residence, by grade level.

LIBERTY PS

Attend Incoming Report

LIBERTY NORTH HIGH															
RESIDE	EE PK	KG	1ST	2ND	3RD	4TH	5TH	6TH	7TH	8TH	9TH	10TH	11TH	12TH	TOTAL
LIBERTY HIGH	0	0	0	0	0	0	0	0	0	0	5	6	5	7	23
LIBERTY NORTH	0	0	0	0	0	0	0	0	0	0	572	608	514	597	2,291
OUT OF DISTRICT	0	0	0	0	0	0	0	0	0	0	3	3	4	4	14
UNMATCHED	0	0	0	0	0	0	0	0	0	0	0	0	0	1	1
LIBERTY NORTH HIGH TOTAL	0	0	0	0	0	0	0	0	0	0	580	617	523	609	2,329
	EE PK	KG	1ST	2ND	3RD	4TH	5TH	6TH	7TH	8TH	9TH	10TH	11TH	12TH	TOTAL
LIBERTY PS TOTAL	316	757	778	821	867	877	979	933	940	951	1,010	1,117	997	1,103	12,446

Note: Details the distribution of students who ATTEND the designated school and the actual attendance zone of the students place of residence, by grade level.

LIBERTY PS

Reside Outgoing Report

ALEXANDER DONIPHAN ELEM															
SCHOOL	EE PK	KG	1ST	2ND	3RD	4TH	5TH	6TH	7TH	8TH	9TH	10TH	11TH	12TH	TOTAL
ALEXANDER DONIPHAN ELEM	0	49	41	55	54	51	64	0	0	0	0	0	0	0	314
ECEC	24	0	0	0	0	0	0	0	0	0	0	0	0	0	24
EPIC ELEM	0	6	5	3	6	3	3	0	0	0	0	0	0	0	26
LEWIS AND CLARK ELEM	0	0	1	1	0	0	0	0	0	0	0	0	0	0	2
LIBERTY OAKS ELEM	0	2	0	0	2	0	1	0	0	0	0	0	0	0	5
LILLIAN SCHUMACHER ELEM	0	0	0	0	2	1	1	0	0	0	0	0	0	0	4
MANOR HILL ELEM	0	0	0	1	0	2	1	0	0	0	0	0	0	0	4
RIDGEVIEW ELEM	0	0	2	0	1	0	2	0	0	0	0	0	0	0	5
SHOAL CREEK ELEM	0	0	1	0	0	1	0	0	0	0	0	0	0	0	2
ALEXANDER DONIPHAN ELEM TOTAL	24	57	50	60	65	58	72	0	0	0	0	0	0	0	386
FRANKLIN ELEM															
SCHOOL	EE PK	KG	1ST	2ND	3RD	4TH	5TH	6TH	7TH	8TH	9TH	10TH	11TH	12TH	TOTAL
ALEXANDER DONIPHAN ELEM	0	1	0	0	0	0	0	0	0	0	0	0	0	0	1
ECEC	16	0	0	0	0	0	0	0	0	0	0	0	0	0	16
EPIC ELEM	0	0	0	5	3	3	2	0	0	0	0	0	0	0	13
FRANKLIN ELEM	0	46	36	32	32	41	41	0	0	0	0	0	0	0	228
LEWIS AND CLARK ELEM	0	0	0	0	2	0	1	0	0	0	0	0	0	0	3
LIBERTY OAKS ELEM	0	1	1	1	0	0	0	0	0	0	0	0	0	0	3
LILLIAN SCHUMACHER ELEM	0	1	3	1	1	0	2	0	0	0	0	0	0	0	8
MANOR HILL ELEM	0	1	1	0	0	1	0	0	0	0	0	0	0	0	3
RIDGEVIEW ELEM	0	2	1	0	2	0	0	0	0	0	0	0	0	0	5
WARREN HILLS ELEM	0	0	0	1	1	0	0	0	0	0	0	0	0	0	2
FRANKLIN ELEM TOTAL	16	52	42	40	41	45	46	0	0	0	0	0	0	0	282

Note: Details the distribution of students who RESIDE within the designated attendance zone and the school they attend, by grade level.

LIBERTY PS

Reside Outgoing Report

KELLYBROOK ELEM															
SCHOOL	EE PK	KG	1ST	2ND	3RD	4TH	5TH	6TH	7TH	8TH	9TH	10TH	11TH	12TH	TOTAL
ALEXANDER DONIPHAN ELEM	0	0	0	0	0	0	1	0	0	0	0	0	0	0	1
ECEC	45	0	0	0	0	0	0	0	0	0	0	0	0	0	45
EPIC ELEM	0	3	6	3	3	6	3	0	0	0	0	0	0	0	24
KELLYBROOK ELEM	0	72	80	87	93	94	97	0	0	0	0	0	0	0	523
LEWIS AND CLARK ELEM	0	0	2	0	0	0	0	0	0	0	0	0	0	0	2
LIBERTY OAKS ELEM	0	0	0	0	1	0	1	0	0	0	0	0	0	0	2
LILLIAN SCHUMACHER ELEM	0	0	1	0	0	0	0	0	0	0	0	0	0	0	1
MANOR HILL ELEM	0	0	0	1	0	1	1	0	0	0	0	0	0	0	3
RIDGEVIEW ELEM	0	1	0	0	0	0	0	0	0	0	0	0	0	0	1
SHOAL CREEK ELEM	0	3	3	0	3	4	3	0	0	0	0	0	0	0	16
WARREN HILLS ELEM	0	2	3	5	2	3	5	0	0	0	0	0	0	0	20
KELLYBROOK ELEM TOTAL	45	81	95	96	102	108	111	0	0	0	0	0	0	0	638

LEWIS AND CLARK ELEM															
SCHOOL	EE PK	KG	1ST	2ND	3RD	4TH	5TH	6TH	7TH	8TH	9TH	10TH	11TH	12TH	TOTAL
ALEXANDER DONIPHAN ELEM	0	0	0	1	0	1	0	0	0	0	0	0	0	0	2
ECEC	24	0	0	0	0	0	0	0	0	0	0	0	0	0	24
EPIC ELEM	0	6	6	6	5	6	4	0	0	0	0	0	0	0	33
FRANKLIN ELEM	0	1	1	2	2	0	2	0	0	0	0	0	0	0	8
KELLYBROOK ELEM	0	1	2	2	2	0	1	0	0	0	0	0	0	0	8
LEWIS AND CLARK ELEM	0	67	74	82	86	86	113	0	0	0	0	0	0	0	508
LIBERTY OAKS ELEM	0	0	0	0	0	1	0	0	0	0	0	0	0	0	1
LILLIAN SCHUMACHER ELEM	0	1	0	0	2	0	1	0	0	0	0	0	0	0	4
MANOR HILL ELEM	0	0	1	1	0	0	0	0	0	0	0	0	0	0	2
RIDGEVIEW ELEM	0	0	1	1	0	1	4	0	0	0	0	0	0	0	7
SHOAL CREEK ELEM	0	0	1	0	2	0	0	0	0	0	0	0	0	0	3
WARREN HILLS ELEM	0	2	4	1	4	4	2	0	0	0	0	0	0	0	17
LEWIS AND CLARK ELEM TOTAL	24	78	90	96	103	99	127	0	0	0	0	0	0	0	617

Note: Details the distribution of students who RESIDE within the designated attendance zone and the school they attend, by grade level.

LIBERTY PS

Reside Outgoing Report

LIBERTY OAKS ELEM															
SCHOOL	EE PK	KG	1ST	2ND	3RD	4TH	5TH	6TH	7TH	8TH	9TH	10TH	11TH	12TH	TOTAL
ALEXANDER DONIPHAN ELEM	0	0	0	0	0	0	2	0	0	0	0	0	0	0	2
ECEC	38	0	0	0	0	0	0	0	0	0	0	0	0	0	38
EPIC ELEM	0	6	6	3	4	3	4	0	0	0	0	0	0	0	26
LEWIS AND CLARK ELEM	0	1	0	0	1	0	0	0	0	0	0	0	0	0	2
LIBERTY OAKS ELEM	0	69	81	72	88	73	102	0	0	0	0	0	0	0	485
LILLIAN SCHUMACHER ELEM	0	1	0	0	1	0	1	0	0	0	0	0	0	0	3
MANOR HILL ELEM	0	1	1	1	1	0	0	0	0	0	0	0	0	0	4
RIDGEVIEW ELEM	0	0	0	2	0	0	0	0	0	0	0	0	0	0	2
SHOAL CREEK ELEM	0	0	0	0	1	1	0	0	0	0	0	0	0	0	2
WARREN HILLS ELEM	0	2	0	0	1	1	0	0	0	0	0	0	0	0	4
LIBERTY OAKS ELEM TOTAL	38	80	88	78	97	78	109	0	0	0	0	0	0	0	568
LILLIAN SCHUMACHER ELEM															
SCHOOL	EE PK	KG	1ST	2ND	3RD	4TH	5TH	6TH	7TH	8TH	9TH	10TH	11TH	12TH	TOTAL
ALEXANDER DONIPHAN ELEM	0	0	0	1	0	0	0	0	0	0	0	0	0	0	1
ECEC	37	0	0	0	0	0	0	0	0	0	0	0	0	0	37
EPIC ELEM	0	5	4	5	6	7	4	0	0	0	0	0	0	0	31
FRANKLIN ELEM	0	2	0	0	1	0	1	0	0	0	0	0	0	0	4
KELLYBROOK ELEM	0	0	0	1	0	0	0	0	0	0	0	0	0	0	1
LILLIAN SCHUMACHER ELEM	0	58	72	69	76	82	68	0	0	0	0	0	0	0	425
MANOR HILL ELEM	0	0	3	3	1	1	2	0	0	0	0	0	0	0	10
RIDGEVIEW ELEM	0	0	1	1	0	0	0	0	0	0	0	0	0	0	2
WARREN HILLS ELEM	0	0	0	1	0	0	0	0	0	0	0	0	0	0	1
LILLIAN SCHUMACHER ELEM TOTAL	37	65	80	81	84	90	75	0	0	0	0	0	0	0	512

Note: Details the distribution of students who RESIDE within the designated attendance zone and the school they attend, by grade level.

LIBERTY PS

Reside Outgoing Report

MANOR HILL ELEM															
SCHOOL	EE PK	KG	1ST	2ND	3RD	4TH	5TH	6TH	7TH	8TH	9TH	10TH	11TH	12TH	TOTAL
ALEXANDER DONIPHAN ELEM	0	0	0	1	2	2	0	0	0	0	0	0	0	0	5
ECEC	25	0	0	0	0	0	0	0	0	0	0	0	0	0	25
EPIC ELEM	0	4	2	3	4	4	3	0	0	0	0	0	0	0	20
LEWIS AND CLARK ELEM	0	1	0	0	0	0	0	0	0	0	0	0	0	0	1
LIBERTY OAKS ELEM	0	0	0	1	0	0	0	0	0	0	0	0	0	0	1
LILLIAN SCHUMACHER ELEM	0	0	0	1	1	0	0	0	0	0	0	0	0	0	2
MANOR HILL ELEM	0	35	40	40	39	42	59	0	0	0	0	0	0	0	255
RIDGEVIEW ELEM	0	1	0	0	0	0	1	0	0	0	0	0	0	0	2
WARREN HILLS ELEM	0	1	0	2	0	0	1	0	0	0	0	0	0	0	4
MANOR HILL ELEM TOTAL	25	42	42	48	46	48	64	0	0	0	0	0	0	0	315
OUT OF DISTRICT															
SCHOOL	EE PK	KG	1ST	2ND	3RD	4TH	5TH	6TH	7TH	8TH	9TH	10TH	11TH	12TH	TOTAL
ALEXANDER DONIPHAN ELEM	0	0	2	0	2	0	0	0	0	0	0	0	0	0	4
ECEC	3	0	0	0	0	0	0	0	0	0	0	0	0	0	3
FRANKLIN ELEM	0	0	1	1	1	1	2	0	0	0	0	0	0	0	6
KELLYBROOK ELEM	0	1	1	0	1	0	0	0	0	0	0	0	0	0	3
LEWIS AND CLARK ELEM	0	0	0	3	1	1	1	0	0	0	0	0	0	0	6
LIBERTY OAKS ELEM	0	1	0	1	1	0	0	0	0	0	0	0	0	0	3
LILLIAN SCHUMACHER ELEM	0	0	0	1	1	0	1	0	0	0	0	0	0	0	3
MANOR HILL ELEM	0	0	0	0	0	1	0	0	0	0	0	0	0	0	1
RIDGEVIEW ELEM	0	2	0	0	0	0	0	0	0	0	0	0	0	0	2
WARREN HILLS ELEM	0	0	0	0	0	0	1	0	0	0	0	0	0	0	1
OUT OF DISTRICT TOTAL	3	4	4	6	7	3	5	0	0	0	0	0	0	0	32

Note: Details the distribution of students who RESIDE within the designated attendance zone and the school they attend, by grade level.

LIBERTY PS

Reside Outgoing Report

RIDGEVIEW ELEM															
SCHOOL	EE PK	KG	1ST	2ND	3RD	4TH	5TH	6TH	7TH	8TH	9TH	10TH	11TH	12TH	TOTAL
ALEXANDER DONIPHAN ELEM	0	1	0	0	0	1	0	0	0	0	0	0	0	0	2
ECEC	26	0	0	0	0	0	0	0	0	0	0	0	0	0	26
EPIC ELEM	0	3	6	4	7	4	12	0	0	0	0	0	0	0	36
FRANKLIN ELEM	0	2	1	2	1	2	1	0	0	0	0	0	0	0	9
KELLYBROOK ELEM	0	1	0	0	0	0	0	0	0	0	0	0	0	0	1
LEWIS AND CLARK ELEM	0	4	4	1	0	1	2	0	0	0	0	0	0	0	12
LIBERTY OAKS ELEM	0	0	1	0	0	0	1	0	0	0	0	0	0	0	2
LILLIAN SCHUMACHER ELEM	0	2	0	0	0	1	1	0	0	0	0	0	0	0	4
MANOR HILL ELEM	0	3	1	1	2	4	2	0	0	0	0	0	0	0	13
RIDGEVIEW ELEM	0	44	44	57	48	66	54	0	0	0	0	0	0	0	313
SHOAL CREEK ELEM	0	2	0	0	0	1	0	0	0	0	0	0	0	0	3
WARREN HILLS ELEM	0	1	1	2	0	1	0	0	0	0	0	0	0	0	5
RIDGEVIEW ELEM TOTAL	26	63	58	67	58	81	73	0	0	0	0	0	0	0	426

SHOAL CREEK ELEM															
SCHOOL	EE PK	KG	1ST	2ND	3RD	4TH	5TH	6TH	7TH	8TH	9TH	10TH	11TH	12TH	TOTAL
ALEXANDER DONIPHAN ELEM	0	0	1	1	0	1	0	0	0	0	0	0	0	0	3
ECEC	41	0	0	0	0	0	0	0	0	0	0	0	0	0	41
EPIC ELEM	0	9	7	11	5	6	11	0	0	0	0	0	0	0	49
KELLYBROOK ELEM	0	1	1	0	1	1	2	0	0	0	0	0	0	0	6
LEWIS AND CLARK ELEM	0	0	0	0	0	1	2	0	0	0	0	0	0	0	3
LIBERTY OAKS ELEM	0	0	1	3	1	1	2	0	0	0	0	0	0	0	8
MANOR HILL ELEM	0	1	0	0	0	0	0	0	0	0	0	0	0	0	1
RIDGEVIEW ELEM	0	0	1	1	0	0	0	0	0	0	0	0	0	0	2
SHOAL CREEK ELEM	0	119	119	120	153	157	173	0	0	0	0	0	0	0	841
WARREN HILLS ELEM	0	1	0	0	0	1	0	0	0	0	0	0	0	0	2
SHOAL CREEK ELEM TOTAL	41	131	130	136	160	168	190	0	0	0	0	0	0	0	956

Note: Details the distribution of students who RESIDE within the designated attendance zone and the school they attend, by grade level.

LIBERTY PS

Reside Outgoing Report

UNMATCHED															
SCHOOL	EE PK	KG	1ST	2ND	3RD	4TH	5TH	6TH	7TH	8TH	9TH	10TH	11TH	12TH	TOTAL
KELLYBROOK ELEM	0	0	0	0	0	0	1	0	0	0	0	0	0	0	1
SHOAL CREEK ELEM	0	0	0	0	1	0	1	0	0	0	0	0	0	0	2
UNMATCHED TOTAL	0	0	0	0	1	0	2	0	0	0	0	0	0	0	3
WARREN HILLS ELEM															
SCHOOL	EE PK	KG	1ST	2ND	3RD	4TH	5TH	6TH	7TH	8TH	9TH	10TH	11TH	12TH	TOTAL
ALEXANDER DONIPHAN ELEM	0	1	1	0	1	0	0	0	0	0	0	0	0	0	3
ECEC	37	0	0	0	0	0	0	0	0	0	0	0	0	0	37
EPIC ELEM	0	6	6	7	6	4	3	0	0	0	0	0	0	0	32
FRANKLIN ELEM	0	0	0	0	0	1	0	0	0	0	0	0	0	0	1
KELLYBROOK ELEM	0	0	0	1	0	0	1	0	0	0	0	0	0	0	2
LEWIS AND CLARK ELEM	0	0	3	1	0	1	1	0	0	0	0	0	0	0	6
LIBERTY OAKS ELEM	0	0	0	0	0	0	1	0	0	0	0	0	0	0	1
LILLIAN SCHUMACHER ELEM	0	2	0	0	1	0	0	0	0	0	0	0	0	0	3
MANOR HILL ELEM	0	0	0	0	0	0	2	0	0	0	0	0	0	0	2
RIDGEVIEW ELEM	0	0	0	1	0	1	2	0	0	0	0	0	0	0	4
SHOAL CREEK ELEM	0	0	0	0	0	1	1	0	0	0	0	0	0	0	2
WARREN HILLS ELEM	0	95	89	103	95	91	94	0	0	0	0	0	0	0	567
WARREN HILLS ELEM TOTAL	37	104	99	113	103	99	105	0	0	0	0	0	0	0	660
DISCOVERY MID															
SCHOOL	EE PK	KG	1ST	2ND	3RD	4TH	5TH	6TH	7TH	8TH	9TH	10TH	11TH	12TH	TOTAL
DISCOVERY MID	0	0	0	0	0	0	0	203	205	238	0	0	0	0	646
HERITAGE MID	0	0	0	0	0	0	0	2	0	0	0	0	0	0	2
LIBERTY MID	0	0	0	0	0	0	0	0	0	2	0	0	0	0	2
SOUTH VALLEY MID	0	0	0	0	0	0	0	0	2	1	0	0	0	0	3
DISCOVERY MID TOTAL	0	0	0	0	0	0	0	205	207	241	0	0	0	0	653

Note: Details the distribution of students who RESIDE within the designated attendance zone and the school they attend, by grade level.

LIBERTY PS

Reside Outgoing Report

HERITAGE MID															
SCHOOL	EE PK	KG	1ST	2ND	3RD	4TH	5TH	6TH	7TH	8TH	9TH	10TH	11TH	12TH	TOTAL
DISCOVERY MID	0	0	0	0	0	0	0	1	0	0	0	0	0	0	1
HERITAGE MID	0	0	0	0	0	0	0	251	237	245	0	0	0	0	733
LIBERTY MID	0	0	0	0	0	0	0	4	2	2	0	0	0	0	8
SOUTH VALLEY MID	0	0	0	0	0	0	0	0	2	4	0	0	0	0	6
HERITAGE MID TOTAL	0	0	0	0	0	0	0	256	241	251	0	0	0	0	748

LIBERTY MID															
SCHOOL	EE PK	KG	1ST	2ND	3RD	4TH	5TH	6TH	7TH	8TH	9TH	10TH	11TH	12TH	TOTAL
DISCOVERY MID	0	0	0	0	0	0	0	6	5	6	0	0	0	0	17
HERITAGE MID	0	0	0	0	0	0	0	1	0	0	0	0	0	0	1
LIBERTY MID	0	0	0	0	0	0	0	184	205	193	0	0	0	0	582
SOUTH VALLEY MID	0	0	0	0	0	0	0	1	2	2	0	0	0	0	5
LIBERTY MID TOTAL	0	0	0	0	0	0	0	192	212	201	0	0	0	0	605

OUT OF DISTRICT															
SCHOOL	EE PK	KG	1ST	2ND	3RD	4TH	5TH	6TH	7TH	8TH	9TH	10TH	11TH	12TH	TOTAL
DISCOVERY MID	0	0	0	0	0	0	0	2	1	0	0	0	0	0	3
HERITAGE MID	0	0	0	0	0	0	0	2	0	1	0	0	0	0	3
LIBERTY MID	0	0	0	0	0	0	0	1	1	1	0	0	0	0	3
SOUTH VALLEY MID	0	0	0	0	0	0	0	0	0	1	0	0	0	0	1
OUT OF DISTRICT TOTAL	0	0	0	0	0	0	0	5	2	3	0	0	0	0	10

SOUTH VALLEY MID															
SCHOOL	EE PK	KG	1ST	2ND	3RD	4TH	5TH	6TH	7TH	8TH	9TH	10TH	11TH	12TH	TOTAL
HERITAGE MID	0	0	0	0	0	0	0	7	5	7	0	0	0	0	19
LIBERTY MID	0	0	0	0	0	0	0	0	2	0	0	0	0	0	2
SOUTH VALLEY MID	0	0	0	0	0	0	0	268	271	247	0	0	0	0	786
SOUTH VALLEY MID TOTAL	0	0	0	0	0	0	0	275	278	254	0	0	0	0	807

UNMATCHED															
SCHOOL	EE PK	KG	1ST	2ND	3RD	4TH	5TH	6TH	7TH	8TH	9TH	10TH	11TH	12TH	TOTAL
SOUTH VALLEY MID	0	0	0	0	0	0	0	0	0	1	0	0	0	0	1
UNMATCHED TOTAL	0	0	0	0	0	0	0	0	0	1	0	0	0	0	1

Note: Details the distribution of students who RESIDE within the designated attendance zone and the school they attend, by grade level.

LIBERTY PS

Reside Outgoing Report

LIBERTY HIGH															
SCHOOL	EE PK	KG	1ST	2ND	3RD	4TH	5TH	6TH	7TH	8TH	9TH	10TH	11TH	12TH	TOTAL
LIBERTY HIGH	0	0	0	0	0	0	0	0	0	0	425	481	461	470	1,837
LIBERTY NORTH	0	0	0	0	0	0	0	0	0	0	5	6	5	7	23
LIBERTY HIGH TOTAL	0	0	0	0	0	0	0	0	0	0	430	487	466	477	1,860
LIBERTY NORTH HIGH															
SCHOOL	EE PK	KG	1ST	2ND	3RD	4TH	5TH	6TH	7TH	8TH	9TH	10TH	11TH	12TH	TOTAL
LIBERTY HIGH	0	0	0	0	0	0	0	0	0	0	4	16	9	14	43
LIBERTY NORTH	0	0	0	0	0	0	0	0	0	0	572	608	514	597	2,291
LIBERTY NORTH HIGH TOTAL	0	0	0	0	0	0	0	0	0	0	576	624	523	611	2,334
OUT OF DISTRICT															
SCHOOL	EE PK	KG	1ST	2ND	3RD	4TH	5TH	6TH	7TH	8TH	9TH	10TH	11TH	12TH	TOTAL
LIBERTY HIGH	0	0	0	0	0	0	0	0	0	0	1	3	3	10	17
LIBERTY NORTH	0	0	0	0	0	0	0	0	0	0	3	3	4	4	14
OUT OF DISTRICT TOTAL	0	0	0	0	0	0	0	0	0	0	4	6	7	14	31
UNMATCHED															
SCHOOL	EE PK	KG	1ST	2ND	3RD	4TH	5TH	6TH	7TH	8TH	9TH	10TH	11TH	12TH	TOTAL
LIBERTY HIGH	0	0	0	0	0	0	0	0	0	0	0	0	1	0	1
LIBERTY NORTH	0	0	0	0	0	0	0	0	0	0	0	0	0	1	1
UNMATCHED TOTAL	0	0	0	0	0	0	0	0	0	0	0	0	1	1	2
LIBERTY PS TOTAL	316	757	778	821	867	877	979	933	940	951	1,010	1,117	997	1,103	12,446

Note: Details the distribution of students who RESIDE within the designated attendance zone and the school they attend, by grade level.