



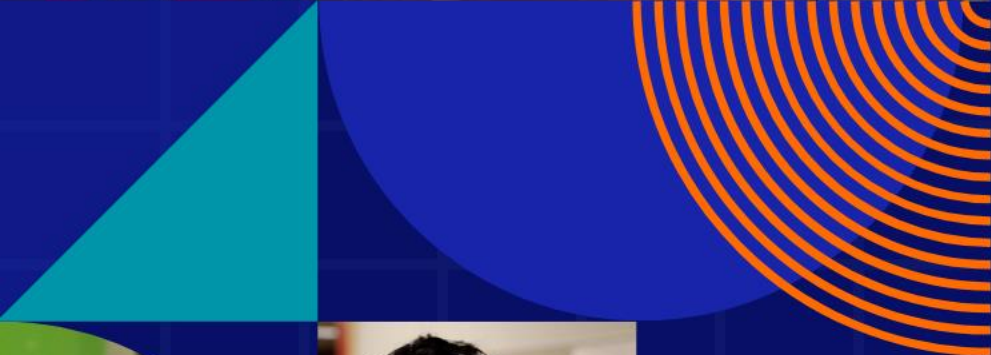
# Innovate, Collaborate, Educate: Learning Beyond the Classroom for Future-Ready Families

Thursday, October 24 | 6-7:30 pm



**FEDERAL WAY**  
PUBLIC SCHOOLS





# *Special Education*

## IEP Essentials: Navigating Special Education for Your Scholar's Success

Jane Al-Tamimi  
Toni Cheever  
October 24, 2024



**FEDERAL WAY**  
PUBLIC SCHOOLS



**Jane Al-Tamimi**  
Assistant Director of Student  
Support Services

Principal , Employment and  
Transition Program

# Welcome





**Toni Cheever**  
Executive Director of  
Student Support Services

# Welcome



two



WHOLE CHILD

Thriving,  
Confident,  
Responsible  
Individuals



FEDERAL WAY  
PUBLIC SCHOOLS

## PILLAR 2

Safe climate and strong  
relationships with families and  
communities

two

WHOLE CHILD:  
THRIVING,  
CONFIDENT,  
RESPONSIBLE INDIVIDUALS

Every student scholar will be empowered and prepared to develop personal responsibility in order to be positive, productive members of society.



# Your child has been referred for a Special Education Evaluation...





**The Special Education Process can be a confusing and scary thing if you don't have all of the information you need.**

# The process takes time

- The timelines for Special Education Evaluation and creation of an IEP are set up to make sure that a scholar's needs are carefully considered and that an appropriate educational program can be created for **that student**.





There is a whole team  
dedicated to  
supporting your  
child...**and you are an  
important part of that  
team!**



# Evaluation Team May Include:

- ❖ **Parents/ Guardians**
- ❖ **School Psychologist**
- ❖ **Special Education Teacher**
- ❖ **General Education Teacher**
- ❖ **Specialists (OT, PT, SLP, others)**
- ❖ **School Nurse**
- ❖ **Interpreter if needed**
- ❖ **Sometimes Outside Agencies or Providers**
- ❖ **Anyone parents/ guardians want to include**



# Evaluation Team May Include:

- ❖ **Parents/ Guardians**
- ❖ **School Psychologist**
- ❖ **Special Education Teacher**
- ❖ **General Education Teacher**
- ❖ **Specialists (OT, PT, SLP, others)**
- ❖ **School Nurse**
- ❖ **Interpreter if needed**
- ❖ **Sometimes Outside Agencies or Providers**
- ❖ **Anyone parents/ guardians want to include**



# The process takes time

**Referral is made:** the evaluation team has **25 calendar days** to respond to the referral.

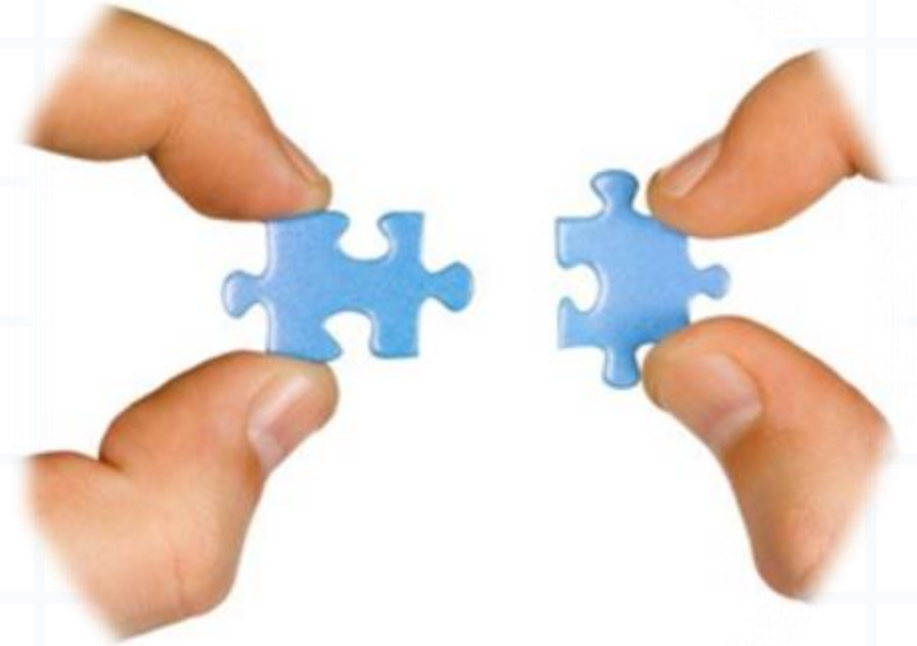
**Evaluation:** The evaluation team has **35 school days** to complete the evaluation and hold the evaluation results meeting

**IEP meeting:** The IEP must be held within **30 calendar days** of the evaluation meeting.



# Common Areas of Assessment

- **Review of Health Information**
- **Cognitive (IQ) Levels**
- **Academic Achievement**
- **Social Emotional Skills**
- **Specialty areas such as:  
Communication, Motor Skills,  
and Adaptive needs.**



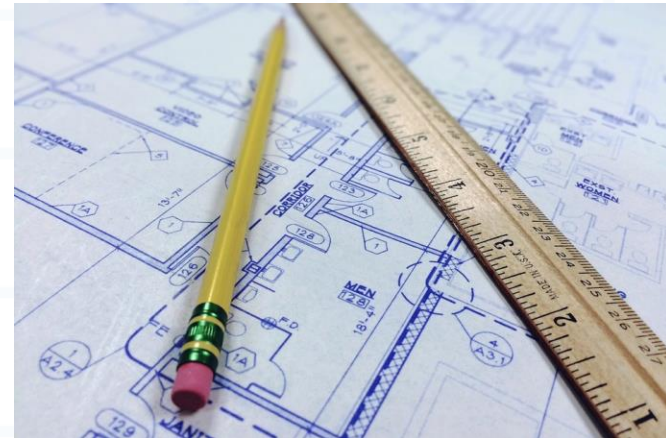
# Evaluation Results Meeting



- **Evaluation Team, including parent(s) and general education teacher meets**
- **Results shared**
- **Qualification determined**
- **Recommendations made**
- **If a student qualifies, parents are asked for permission to begin IEP process**

After an evaluation determines that a student is in need of specially designed instruction, the IEP is developed...

- It determines What services the scholar will get,
- When they will get them
- Where they will get them
- And **who** will provide them



# The IEP



- Present Levels
- Measurable Annual Goals
- Service Matrix
- LRE Statement
- Accommodations and Modifications
- Transition Plan if Appropriate



# The Team Can't Do It Without You!

You are a **VITAL** and  
**ACTIVE MEMBER**





# Members of the IEP Team

- ❖ Parents
- ❖ Special Education Teacher
- ❖ Administrator or Designee
- ❖ General Education Teacher(s)
- ❖ Specialists (OT, PT, SLP, others)
- ❖ Sometimes Outside Agencies
- ❖ Interpreter if needed
- ❖ Anyone the family wants present



# What's my role?

- ❖ Ask questions
- ❖ Advocate
- ❖ Share ideas
- ❖ Let team know about any important changes at home
- ❖ Share your perspective



# What if we don't agree?

- ❖ **Speak up**
- ❖ **Ask for clarification**
- ❖ **Suggest alternatives**
- ❖ **Ask for another meeting**

# Resources for Help

- FWPS Student Support Services office
- Procedural Safeguards
- Washington State Office of the Education Ombuds
- Open Doors for Multi Cultural Families
- Washington PAVE (Partnerships for Action, Voices for Empowerment)



**FEDERAL WAY  
PUBLIC SCHOOLS**

Each Scholar: A voice. A dream. A **BRIGHT** future.

**Thank you!**

# It Takes a Team!



# Feedback Survey

Please help us improve by sharing your feedback about today's event through a 3-minute survey:

Scan QR Code:



Or, Visit: [www.fwps.org/FamilyAcademySurvey](http://www.fwps.org/FamilyAcademySurvey)