

WCUUSD CORE BELIEFS

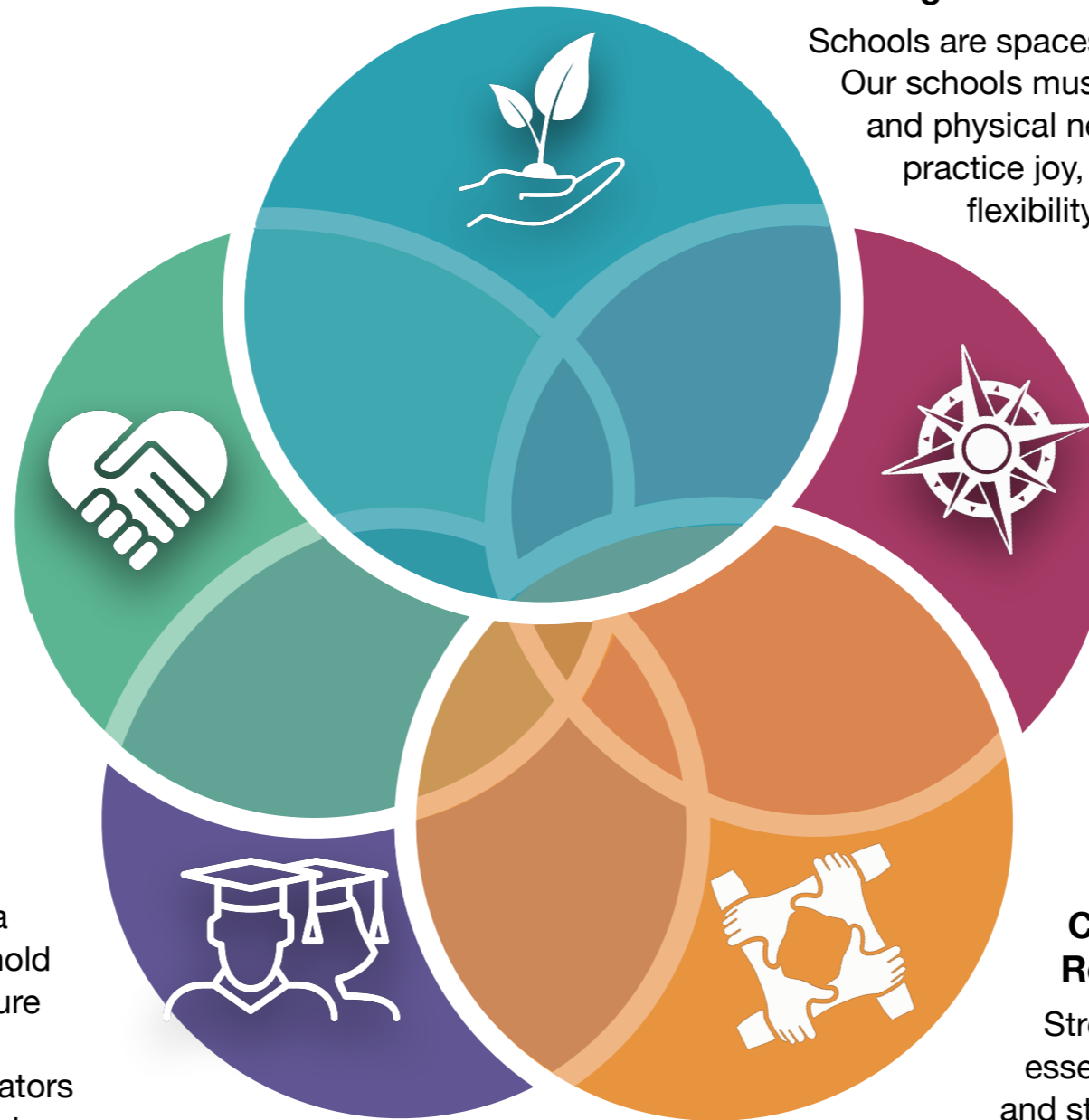
MISSION: WCUUSD exists to nurture and inspire in all students the passion, creativity, and power to contribute to their local and global communities.

Humanity, Justice, Community and Belonging:

Schools respect, value, and welcome all people. Our schools build belonging by honoring diversity, centering equity, and celebrating the different experiences we all bring to our community. We will continue to learn and adjust our practices to create a more just and humane world.

Rigorous Curriculum and Instruction:

ALL students can learn, thrive, and make a difference in their communities. Schools hold high expectations for all students and ensure they see their lives and the lives of others reflected in a meaningful curriculum. Educators nurture and inspire students so that students can direct their learning, celebrate their developing identities, pursue interests, and create meaningful pathways to graduation and lifelong learning.



Well-Being:

Schools are spaces where people feel safe and valued. Our schools must meet the academic, social-emotional, and physical needs of all students. We foster and practice joy, kindness, empathy, inclusivity, and flexibility.

Transparent and Responsible Leadership:

All decisions about our schools must be student-centered. We make decisions using data and input from students and the community. Our processes are clear, predictable, inclusive, and transparent.

Community Engagement and Relationships:

Strong, positive relationships are essential to our schools, communities, and students. We nurture connections among people and places. The community is engaged in our schools and our students are engaged in the local and global community.

WCUUSD GOALS and ACTION STEPS

Goal #1:	Goal #2:	Goal #3:
<p>Build and nurture a culture of well-being and inclusivity.</p>	<p>Challenge, empower, and engage each student through evidence-based instructional strategies and curriculum and varied educational opportunities.</p>	<p>Foster and commit to responsive leadership that engages the community and communicates transparently.</p>
<ul style="list-style-type: none"> • WCUUSD will design and implement social-emotional learning standards, instruction, and assessments that foster emotional well-being and mental health. • All WCUUSD schools design and implement plans to engage and build community and connectedness, both within and beyond their school buildings. • WCUUSD will create a professional learning plan to ensure that all staff can create a safe and welcoming learning and working environment that supports equity, diversity, and inclusion in our schools. • WCUUSD will expand our comprehensive assessment system to include measures of well-being and belonging so that we can celebrate strengths, provide opportunities for reflection, and hold schools accountable to high expectations for all students. 	<ul style="list-style-type: none"> • WCUUSD will leverage its Comprehensive Assessment System to improve our proficiency-based system that holds high expectations for all students and is responsive to their strengths, needs, and interests. • WCUUSD will partner with students to inform curriculum and instruction. • WCUUSD will audit the opportunities in PreK-12 classrooms that ensure robust engagement in real-world authentic skills in and with the community, flexible pathways, and outdoor/place-based experiences. • WCUUSD will leverage its professional development systems to support educators in their learning about: <ul style="list-style-type: none"> • Antibias and antiracist practices that create more inclusive learning environments and more diverse representation across the curriculum. • Universal Design for Learning so all students are engaged in the curriculum, have the supports they need to learn, and are challenged to meet high expectations. • The intentional integration of transferable skills into their instruction. 	<ul style="list-style-type: none"> • WCUUSD leaders will propose a financially sustainable configuration plan that supports the curriculum and culture goals. • WCUUSD leaders will invest in staff and board development to support our three goal areas. • WCUUSD leaders will create and strengthen existing connections between families, students, and communities. • WCUUSD leaders will establish structures, policies, procedures, and accountability frameworks that support the implementation of the strategic plan and report on progress. • The WCUUSD School Board will utilize its Education Monitoring Plan to monitor district progress toward the strategic plan, identify priority areas for investment, and support the work of the Superintendent as they implement the plan goals.