



Troy Schools District

RFP #2324-04

**BP#1B – Elementary School Playgrounds Phase #2 - Addendum
#1**

October 23rd, 2024

Content Included in this Addendum:

**Cover Page (1 Page)
Barton Malow Write Up (2 Pages)
Pre-Bid Job Walk (1 Page)
TMP Addendum #1 Write Up (25 Pages)**

TOTAL PAGES: 29 Pages

October 23rd, 2024

Troy Schools District – BP#1B – Elementary School Playgrounds Phase #2 – Addendum #1

Addendum #1 Bidder Clarifications

A. General Clarifications

- Clarification: Playground contractors will remove and reinstall all structures noted on drawings that are shown to be relocated
- Project Manual updates for work scopes shown below
- Pre-Bid Walk through occurred on 10/16 at Hamilton Elementary

B. Clarifications and Additions to Work Scopes

- **ADD to Demo scope of work** – Sawcut and remove 2” strip of the existing asphalt where the new concrete curb will meet to edge of asphalt
- **ADD to All Work scopes** – Contractors to provide bridging and steel plates to access land lock areas shown on drawings for all sites
- **ADD to Site scope** – Field verify and coordinate all new fencing and relocated fencing with Barton Malow Builders before installation
- **ADD to Site scope** – Refer to sheet C1.0 on the drawings for added site demo key note #9 regarding removal of light posts and concrete base.
- **REMOVE from Asphalt scope** – Sawcut and remove existing asphalt and base to maintain a clean transition referencing the additional 2’ strip needed at concrete curb and existing asphalt.

C. RFI Responses

Q: Is the sitework contractor in charge of building and removal of the temporary road for access?

A: Yes, if needed.

Q: Does the synthetic turf have concrete underneath them, does this fall on sitework contractor or the playground contractor?

A: All concrete is the responsibility of the site contractor.

Q: Should the landscaper include an allowance for filling water bags of the trees?

A: No, refer to specs for watering.

Q: Should the landscaper include an allowance for temporary irrigation to water hydro seed since there will be no access to water seed after school begins?

A: No, refer to specs for watering.

Q: The specs call out for lawn mowing, fertilizing, and weeding. The schools don’t allow us on site during the day once kids have access to playgrounds. How are we supposed to complete this task?

A: Must be coordinated with Barton Malow Builders to occur after or before recess and/or after school hours or weekends.

Q: How do we ensure mowing and fertilizing new lawn areas don’t cross contaminate or conflict with the undisturbed lawn schedule?

A: See previous answer.

Q: 5B in the job scope for sitework says to provide and install and remove 2000 linear foot of temp chain link post driven fencing at each school. Is there a fencing detail that is more specific?

A: No detail provided. Field verify and coordinate with Barton Malow Builders.

Q: 5C in the job scope for sitework – Is there more detail regarding the communication boards and posts?

A: Boards are furnished by owner and posts are provided and installed by contractor.

Q: Does the landscape bid category have an allowance?

A: No.



MEETING SIGN-IN SHEET

DATE: 10/16/2024 PROJECT: BP#1B TROY SCHOOL DISTRICT
TIME: 4:00PM ELEMENTARY SCHOOL PLAYGROUNDS PHASE #2
LOCATION: HAMILTON ELEMENTARY – 5625 NORTHFIELD PKWY, TROY, MI, 48098 SUBJECT: PRE-BID MEETING

ATTENDEES (Please print legibly)	COMPANY	CATEGORY BIDDING	TELEPHONE	E-MAIL ADDRESS
Justin Sherman	Barton Malow Builders			Justin.Sherman@bartonmalow.com
Jon Johnson	Barton Malow Builders			Jon.Johnson@bartonmalow.com
Adam Lewis	Barton Malow Builders			Adam.Lewis@bartonmalow.com
Francis Santoro	Santoro Services LLC	Site work	586-770-5571	Francis@detritsnow.net
John Gennaro	Nitale Paving	Asp	248-765-3106	John@nitalepaving.com
Jackson Wentworth	Eagle Excavation	Site work	810 767-7878	jwentworth@eagleexcavation.com
DARR VETRISER	Dalco services	Site work	586-615-1956	dvetreser@dalco services llc
Brendan Rizzo	Santoro Services LLC	Site work	586-292-0943	brendanr@detritsnow.net



Addendum

Date October 22, 2024
Project Name Troy School District – Costello Elementary School Playground, Hamilton Elementary School Playground, Leonard Elementary School Playground, Schroeder Elementary School Playground, Wass Elementary School Playground, Wattles Elementary School Playground
TMP Project No(s). 22088B, 22089B, 22091B, 22094B, 22096B, 22097B
Bid Package No. 01B
Addendum No. One (1)

The Bidding Documents are modified, supplemented, or augmented as follows and the Addendum is hereby made a part of the proposed Contract Documents.

The following Drawing(s) and Attachment(s) are issued with this Addendum:

Drawing No(s): 22088B – Costello Elementary: C1.0
22089B – Hamilton Elementary: C1.0, C2.1, CE-2.2.0, CE-2.3.0
22091B – Leonard Elementary: C2.0
22094B – Schroeder Elementary: C3.2
22096B – Wass Elementary: C1.0
22097B – Wattles Elementary: C1.0
Attachment(s): Specification Section(s): 00 0110, 10 1426, 32 1218

Item No.	Specification Changes
SC-1	Refer to Section No. 00 0110 – TABLE OF CONTENTS (reissued) A. Added Division 10 specification section as indicated.
SC-2	Refer to Section No. 101426 – POST AND PANEL SIGNAGE (new) A. Issued new specification section, complete.
SC-3	Refer to Section No. 32 1218 – PLAYGROUND ASPHALT PAVING MARKINGS (reissued): A. Reduced number of painted exercises at Leonard Elementary and identified painted exercises as active or passive as indicated.

October 22, 2024

Troy School District – Costello Elementary School Playground, Hamilton Elementary School Playground, Leonard Elementary School Playground, Schroeder Elementary School Playground, Wass Elementary School Playground, Wattles Elementary School Playground

TMP Project No(s). 22088B, 22089B, 22091B, 22094B, 22096B, 22097B

Bid Package No. 01B

Addendum No. One (1)

Page 2 of 3

22088B – Costello Elementary School

Item No. Civil (Playground) Drawing Changes

- CED-1 Refer to Drawing No. C1.0 (reissued):
 A. Revised Demolition note #9 as indicated.

22089B – Hamilton Elementary School

Item No. Civil (Playground) Drawing Changes

- CED-1 Refer to Drawing No. C1.0 (reissued):
 A. Revised Demolition note #9 as indicated.

- CED-2 Refer to Drawing No. C2.1 (reissued):
 A. Removed plastic edging and concrete curb along the northwest and northeast sides of the kindergarten playground as indicated. Added loose fill safety surfacing (by playground contractor) at reduced depth extending to existing fence line as indicated.

Item No. Civil Drawing Changes

- CD-1 Refer to Drawing No. CE-2.2.0 (reissued):
 A. Removed plastic edging and concrete curb along the northwest and northeast sides of the kindergarten playground as indicated.

- CD-2 Refer to Drawing No. CE-2.3.0 (reissued):
 A. Revised spot elevations along the northwest and northeast sides of the kindergarten playground as indicated.

October 22, 2024

Troy School District – Costello Elementary School Playground, Hamilton Elementary School Playground, Leonard Elementary School Playground, Schroeder Elementary School Playground, Wass Elementary School Playground, Wattles Elementary School Playground

TMP Project No(s). 22088B, 22089B, 22091B, 22094B, 22096B, 22097B

Bid Package No. 01B

Addendum No. One (1)

Page 3 of 3

22091B – Leonard Elementary School

Item No. Civil (Playground) Drawing Changes

- CED-1 Refer to Drawing No. C2.0 (reissued):
- A. Reduced number of painted exercises and directionally oriented and identified painted exercises as active or passive as indicated.

22094B – Schroeder Elementary School

Item No. Civil (Playground) Drawing Changes

- CED-1 Refer to Drawing No. C3.2 (reissued):
- A. Shifted lateral underdrain north as indicated.

22096B – Wass Elementary School

Item No. Civil (Playground) Drawing Changes

- CED-1 Refer to Drawing No. C1.0 (reissued):
- A. Revised Demolition note #9 as indicated.

22097B – Wattles Elementary School

Item No. Civil (Playground) Drawing Changes

- CED-1 Refer to Drawing No. C1.0 (reissued):
- A. Revised Demolition note #9 as indicated.

END OF ADDENDUM NO. 1 - BID PACKAGE NO. 1B

TABLE OF CONTENTS

PROCUREMENT AND CONTRACTING REQUIREMENTS GROUP

DIVISION 00 – PROCUREMENT AND CONTRACTING REQUIREMENTS

Section	Title	Issued
00 0101	Title Page	CD
00 0110	Table of Contents	CD, ADD1
00 0115	List of Drawings	CD
00 8200	Availability of Electronic Files	CD
00 8200.02	Electronic Files Release Form (Free)	CD

SPECIFICATIONS GROUP

GENERAL REQUIREMENTS SUBGROUP

DIVISION 01 - GENERAL REQUIREMENTS

Section	Title	Issued
01 2200	Unit Prices	CD
01 2500	Substitution Procedures	CD
01 2500.01	TMP Substitution Request Form	CD
01 3000	Administrative Requirements	CD
01 3000.01	TMP Submittal and Sample Transmittal Form	CD
01 4000	Quality Requirements	CD
01 4100	Regulatory Requirements	CD
01 4216	Definitions	CD
01 4219	Reference Standards	CD
01 4533	Code-Required Special Inspections and Procedures	CD
01 5639	Temporary Tree and Plan Protection	CD
01 6000	Product Requirements	CD
01 7000	Execution and Closeout Requirements	CD
01 7329	Cutting and Patching	CD
01 7800	Closeout Submittals	CD
01 7900	Demonstration and Training	CD

FACILITY CONSTRUCTION SUBGROUP**DIVISION 02 – EXISTING CONDITIONS**

Section	Title	Issued
02 4100	Demolition	CD

DIVISION 03 - CONCRETE

Not Used

DIVISION 04 - MASONRY

Not Used

DIVISION 05 - METALS

Not Used

DIVISION 06 – WOOD, PLASTICS, AND COMPOSITES

Not Used

DIVISION 07 - THERMAL AND MOISTURE PROTECTION

Not Used

DIVISION 08 - OPENINGS

Not Used

DIVISION 09 - FINISHES

Not Used

DIVISION 10 - SPECIALTIES

Section	Title	Issued
10 1426	Post and Panel Signs	ADD1

DIVISION 11 - EQUIPMENT

Not Used

DIVISION 12 - FURNISHINGS

Not Used

DIVISION 13 - SPECIAL CONSTRUCTION

Not Used

DIVISION 14 - CONVEYING EQUIPMENT

Not Used

FACILITY SERVICES SUBGROUP

DIVISION 20 – COMMON MECHANICAL REQUIREMENTS

Not Used

DIVISION 21 – FIRE SUPPRESSION

Not Used

DIVISION 22 - PLUMBING

Not Used

DIVISION 23 – HEATING VENTILATING AND AIR CONDITIONING (HVAC)

Not Used

DIVISION 25 – INTEGRATED AUTOMATION

Not Used

DIVISION 26 – ELECTRICAL

Not Used

DIVISION 27 – COMMUNICATIONS

Not Used

DIVISION 28 – ELECTRONIC SAFETY AND SECURITY

Not Used

SITE AND INFRASTRUCTURE SUBGROUP**DIVISION 31 – EARTHWORK**

Section	Title	Issued
31 1000	Site Clearing	CD
31 2000	Earth Moving	CD

DIVISION 32 – EXTERIOR IMPROVEMENTS

Section	Title	Issued
32 1218	Playground Asphalt Paving	CD, ADD1
32 9200	Turf and Grasses	CD
32 9300	Plants	CD

DIVISION 33 – UTILITIES

Not Used

END OF SECTION

SECTION 101426 - POST AND PANEL SIGNAGE

****ADD1****

PART 1 GENERAL

1.01 RELATED DOCUMENTS

- A. Drawings and general provisions of the Contract, including General and Supplementary Conditions and Division 01 Specification Sections, apply to this Section.

1.02 SUMMARY

- A. This Section includes the following:

1. Non-illuminated "Communication Board" post and panel signs.

- B. Related Sections include the following:

1. Division 01 Section "Temporary Facilities and Controls" for temporary Project identification signs and for temporary informational and directional signs.
2. Division 03 Section "Cast-in-Place Concrete" for concrete foundations and concrete fill.

1.03 PERFORMANCE REQUIREMENTS

- A. Design Criteria: Design, fabricate, and install exterior post and panel signs to withstand a wind velocity of 100 mph (160 km/h) on the total sign area, in all directions.

1.04 SUBMITTALS

- A. Product Data: For each type of post and panel sign specified. Include details of construction relative to materials, dimensions of individual components, profiles, and finishes.

1. Provide manufacturer's written instructions for maintaining and cleaning sign surfaces.

- B. Shop Drawings: For each type of sign indicated.

1. Provide plans, elevations, and at least 3/4-inch (1:20) scale sections of typical members and other components. Show anchors, reinforcement, accessories, layout, and installation details.

1.05 QUALITY ASSURANCE

- A. Installer Qualifications: Engage an experienced installer who is an authorized representative of the sign manufacturer and who has completed installation of post and panel signs similar in material, design, and extent to that indicated for this Project and with a record of successful in-service performance.

- B. Source Limitations for Signs: Obtain each sign type indicated from one source from a single manufacturer.

- C. Product Options: Drawings indicate size, profiles, and dimensional requirements of post and panel signs and are based on the specific type and model indicated. Other manufacturers' signs may be considered provided deviations are minor and do not change the design concept and are approved by the Architect.

1. Do not modify intended aesthetic effects, as judged solely by the Architect, except with Architect's approval and only to the extent needed to comply with performance requirements. Where modifications are proposed, submit comprehensive explanatory data to Architect for review.

1.06 DELIVERY AND HANDLING

- A. Delivery: Provide protective covering or crating as recommended by the manufacturer to protect sign components and surfaces against damage during transportation and delivery.

1. Coordinate delivery time so signs can be installed within 24 hours of receipt at Project site.

- B. Handle signs carefully to prevent breakage, surface abrasion, denting, soiling, and other defects. Comply with the manufacturer's written handling instructions for unloading components subject to damage.

1. Inspect sign components for damage on delivery.

2. Do not install damaged sign components.
3. Repair minor damage to signs, provided the finished repair is equal in all respects to the original work and is approved by Architect; otherwise, remove and replace damaged sign components.

1.07 WARRANTY

- A. General Warranty: The special warranty specified in this Article shall not deprive the Owner of other rights the Owner may have under other provisions of the Contract Documents and shall be in addition to, and run concurrent with, other warranties made by the Contractor under requirements of the Contract Documents.
- B. Interpretive signs must be warranted for a period of 10 years against chipping and delaminating and for five years against fading.

PART 2 - PRODUCTS

2.01 MATERIALS

- A. Communication Board Signs: 32 Core Communication Playground Boards, as manufactured by Oakland Schools, (248) 209-2150, Printing@OSisd.org.
1. Model #PS-0232, 2-sided sign
 2. Frame:
 - a. (2) 2-3/8" dia. x 8'-0" length, 40WT galvanized posts
 - b. (2) 2-3/8" dome post caps
 - c. (4) 2-3/8" brace bands with nuts and bolts.
 3. Contractor to provide additional installation materials as required by manufacturer.
 4. Sign panel art graphics must match existing communication board graphics at Troy School Districts. Owner to provide graphics files as needed.

2.02 ACCESSORIES

- A. Fasteners: Use concealed fasteners fabricated from metals that are noncorrosive to sign material and mounting surface.
- B. Anchors and Inserts: Use nonferrous metal or hot-dip galvanized anchors and inserts. Use stainless steel for drilled-in-place anchors. Furnish inserts, as required, to be set into concrete.

PART 3 - EXECUTION

3.01 PREPARATION

- A. Furnish templates, anchor bolts, internal reinforcement, and other items required to be set in concrete post foundations at proper time for setting.

3.02 INSTALLATION

- A. General: Locate sign units and accessories where indicated, using mounting methods of type described and complying with manufacturer's written instructions.
- B. Use anchors as indicated on drawings. Use templates, setting drawings, diagrams, instructions, and directions provided by suppliers of items to be attached.
- C. Install signs level, plumb, and at height indicated, with surfaces free from distortion or other defects in appearance.
- D. Install Communication Board signs per Drawings and manufacturer's written instructions.

3.03 CLEANING AND PROTECTION

- A. After installation, clean soiled sign surfaces according to manufacturer's written instructions. Protect signs from damage until acceptance by Owner.
- B. Protect installed sign units from damage until acceptance by Owner.

END OF SECTION

SECTION 32 1218 – PLAYGROUND ASPHALT PAVING MARKINGS

PART 1 - GENERAL

1.1 RELATED DOCUMENTS

- A. Drawings and general provisions of the Contract, including General and Supplementary Conditions and Division 01 Specification Sections, apply to this Section.
- B. MDOT Standard Specifications For Construction, current edition.

1.2 SUMMARY

- A. Section Includes:
 - 1. Pavement-marking paint.
 - 2. Asphalt coating sealer

1.3 DEFINITION

- A. Hot-Mix Asphalt Paving Terminology: Refer to ASTM D 8 for definitions of terms.
- B. MDOT: Michigan Department of Transportation.

1.4 SYSTEM DESCRIPTION

- A. Provide hot-mix asphalt paving according to materials, workmanship, and other applicable requirements of standard specification of MDOT.
 - 1. Standard Specification: Michigan Department of Transportation Standards, current edition.

1.5 SUBMITTALS

- A. Product Data: For each type of product indicated.

1.6 QUALITY ASSURANCE

- A. Installer Qualifications: Asphalt paint authorized installer who is trained and approved for installation of asphalt paint graphics required for this Project.

1.7 DELIVERY, STORAGE, AND HANDLING

- A. Deliver pavement-marking materials to Project site in original packages with seals unbroken and bearing manufacturer's labels containing brand name and type of material, date of manufacture, and directions for storage.
- B. Store pavement-marking materials in a clean, dry, protected location within temperature range required by manufacturer. Protect stored materials from direct sunlight.

1.8 PROJECT CONDITIONS

- A. Pavement-Marking Paint: Proceed with pavement marking only on clean, dry surfaces and at a minimum ambient or surface temperature of 40 deg F for oil-based materials, 50 deg F for water-based materials and not exceeding 95 deg F

PART 2 - PRODUCTS

2.1 AUXILIARY MATERIALS

- A. Pavement-Marking Paint: Alkyd-resin type, lead and chromate free, ready mixed, complying with AASHTO M 248, Type N; colors complying with FS TT-P-1952.
 - 1. Basketball Court Line Color: White
 - 2. Basketball Court Free Throw Box Infill Color: Blue
 - 3. Asphalt Painted Games:
 - a. Silly Track:
 - 1) Color A: Yellow
 - 2) Color B: Purple
 - b. USA Map:
 - 1) Color C (Country & State Outlines): White
 - 2) Color D (State Infills): Red, orange, yellow, green, blue & purple, colors to alternate and no one (1) color shall be adjacent to the same (1) color.
 - c. Mirror Me:

- 1) Color A: White
- 2) Color B: Red
- 3) Color C: Orange
- 4) Color D: Yellow
- 5) Color E: Green
- 6) Color F: Blue
- 7) Color G: Purple
- 8) Color H: Black
- d. Four-Square:
 - 1) Colors: Refer to construction documents for color information to match each school's colors.
- e. Fitness Agility Ladder:
 - 1) Color A: Blue
 - 2) Color B: Red
 - 3) Feet Color: White
- f. Bulls Eye Game:
 - 1) Inner Circle Color: Yellow
 - 2) Middle Circle Color: Blue
 - 3) Outer Circle Color: Red
 - 4) Text Color: White
 - 5) Throw Line: Red
- g. Robot Hopscotch, #ST 5021 as manufactured by Fit and Fun Playscapes, 200 Overocker road, Bldg. 2, Poughkeepsie, NY, 12603, (800)681-0684, info@fitandfunllc.com
 - 1) Colors to match manufacturer's written instructions.
- h. Alphabet Snake, #ST 5063 as manufactured by Fit and Fun Playscapes, 200 Overocker road, Bldg. 2, Poughkeepsie, NY, 12603, (800)681-0684, info@fitandfunllc.com
 - 1) Colors to match manufacturer's written instructions
- i. Skelly Board, #ST 5020 as manufactured by Fit and Fun Playscapes, 200 Overocker road, Bldg. 2, Poughkeepsie, NY, 12603, (800)681-0684, info@fitandfunllc.com
 - 1) Colors to match manufacturer's written instructions.
4. Exercise Stations:
 - a. Costello Elementary:
 - a) Jumping Jacks, #ST 5071, as manufactured by Fit and Fun Playscapes, 200 Overocker road, Bldg. 2, Poughkeepsie, NY, 12603, (800)681-0684, info@fitandfunllc.com , Color: Blue
 - b) Side Jump, #ST 5076 as manufactured by Fit and Fun Playscapes, 200 Overocker road, Bldg. 2, Poughkeepsie, NY, 12603, (800)681-0684, info@fitandfunllc.com , Color: Yellow
 - c) High Knees, #ST 5080 as manufactured by Fit and Fun Playscapes, 200 Overocker road, Bldg. 2, Poughkeepsie, NY, 12603, (800)681-0684, info@fitandfunllc.com , Color: Cyan
 - d) Step, #ST 5104 as manufactured by Fit and Fun Playscapes, 200 Overocker road, Bldg. 2, Poughkeepsie, NY, 12603, (800)681-0684, info@fitandfunllc.com , Color: Green

- e) Hop, #ST 5075, as manufactured by Fit and Fun Playscapes, 200 Overocker road, Bldg. 2, Poughkeepsie, NY, 12603, (800)681-0684, info@fitandfunllc.com , Color: Orange
- f) Sprint, #ST 5079, as manufactured by Fit and Fun Playscapes, 200 Overocker road, Bldg. 2, Poughkeepsie, NY, 12603, (800)681-0684, info@fitandfunllc.com , Color: Magenta
- 2) Hamilton Elementary:
 - a) Squats, #ST 5069 as manufactured by Fit and Fun Playscapes, 200 Overocker road, Bldg. 2, Poughkeepsie, NY, 12603, (800)681-0684, info@fitandfunllc.com , Color: Green
 - b) Lunges, #ST 5070, as manufactured by Fit and Fun Playscapes, 200 Overocker road, Bldg. 2, Poughkeepsie, NY, 12603, (800)681-0684, info@fitandfunllc.com , Color: Purple
 - c) Jumping Jacks, #ST 5071, as manufactured by Fit and Fun Playscapes, 200 Overocker road, Bldg. 2, Poughkeepsie, NY, 12603, (800)681-0684, info@fitandfunllc.com , Color: Blue
 - d) Jump Rope, ST #5065, as manufactured by Fit and Fun Playscapes, 200 Overocker road, Bldg. 2, Poughkeepsie, NY, 12603, (800)681-0684, info@fitandfunllc.com , Color: Magenta
 - e) Side Jump, #ST 5076 as manufactured by Fit and Fun Playscapes, 200 Overocker road, Bldg. 2, Poughkeepsie, NY, 12603, (800)681-0684, info@fitandfunllc.com , Color: Orange
 - f) High Knees, #ST 5080 as manufactured by Fit and Fun Playscapes, 200 Overocker road, Bldg. 2, Poughkeepsie, NY, 12603, (800)681-0684, info@fitandfunllc.com , Color: Cyan
 - g) Dancer Pose, #ST 5108, as manufactured by Fit and Fun Playscapes, 200 Overocker road, Bldg. 2, Poughkeepsie, NY, 12603, (800)681-0684, info@fitandfunllc.com , Color: Red
 - h) Star Pose, ST #5112 as manufactured by Fit and Fun Playscapes, 200 Overocker road, Bldg. 2, Poughkeepsie, NY, 12603, (800)681-0684, info@fitandfunllc.com , Color: Yellow
 - i) Step, #ST 5104 as manufactured by Fit and Fun Playscapes, 200 Overocker road, Bldg. 2, Poughkeepsie, NY, 12603, (800)681-0684, info@fitandfunllc.com , Color: Green
 - j) Tight Rope, #ST 5105 as manufactured by Fit and Fun Playscapes, 200 Overocker road, Bldg. 2, Poughkeepsie, NY, 12603, (800)681-0684, info@fitandfunllc.com , Color: Purple
 - k) Tree Pose, #ST 5106 as manufactured by Fit and Fun Playscapes, 200 Overocker road, Bldg. 2, Poughkeepsie, NY, 12603, (800)681-0684, info@fitandfunllc.com , Color: Blue
 - l) Sprint, #ST 5079, as manufactured by Fit and Fun Playscapes, 200 Overocker road, Bldg. 2, Poughkeepsie, NY, 12603, (800)681-0684, info@fitandfunllc.com , Color: Magenta
 - m) Hop, #ST 5075, as manufactured by Fit and Fun Playscapes, 200 Overocker road, Bldg. 2, Poughkeepsie, NY, 12603, (800)681-0684, info@fitandfunllc.com , Color: Orange

- n) Peaceful Warrior, #ST 5107, as manufactured by Fit and Fun Playscapes, 200 Overocker road, Bldg. 2, Poughkeepsie, NY, 12603, (800)681-0684, info@fitandfunllc.com , Color: Cyan
- 3) Leonard Elementary:
 - a) Squats, #ST 5069 as manufactured by Fit and Fun Playscapes, 200 Overocker road, Bldg. 2, Poughkeepsie, NY, 12603, (800)681-0684, info@fitandfunllc.com , Color: Green
 - b) Lunges, #ST 5070, as manufactured by Fit and Fun Playscapes, 200 Overocker road, Bldg. 2, Poughkeepsie, NY, 12603, (800)681-0684, info@fitandfunllc.com , Color: Purple
 - c) Jumping Jacks, #ST 5071, as manufactured by Fit and Fun Playscapes, 200 Overocker road, Bldg. 2, Poughkeepsie, NY, 12603, (800)681-0684, info@fitandfunllc.com , Color: Blue
 - ~~d) Jump Rope, ST #5065, as manufactured by Fit and Fun Playscapes, 200 Overocker road, Bldg. 2, Poughkeepsie, NY, 12603, (800)681-0684, info@fitandfunllc.com , Color: Magenta **ADD1**~~
 - e) Side Jump, #ST 5076 as manufactured by Fit and Fun Playscapes, 200 Overocker road, Bldg. 2, Poughkeepsie, NY, 12603, (800)681-0684, info@fitandfunllc.com , Color: Orange
 - f) High Knees, #ST 5080 as manufactured by Fit and Fun Playscapes, 200 Overocker road, Bldg. 2, Poughkeepsie, NY, 12603, (800)681-0684, info@fitandfunllc.com , Color: Cyan
 - g) Dancer Pose, #ST 5108, as manufactured by Fit and Fun Playscapes, 200 Overocker road, Bldg. 2, Poughkeepsie, NY, 12603, (800)681-0684, info@fitandfunllc.com , Color: Red
 - h) Star Pose, ST #5112 as manufactured by Fit and Fun Playscapes, 200 Overocker road, Bldg. 2, Poughkeepsie, NY, 12603, (800)681-0684, info@fitandfunllc.com , Color: Yellow
 - ~~i) Step, #ST 5104 as manufactured by Fit and Fun Playscapes, 200 Overocker road, Bldg. 2, Poughkeepsie, NY, 12603, (800)681-0684, info@fitandfunllc.com , Color: Green **ADD1**~~
 - ~~j) Tight Rope, #ST 5105 as manufactured by Fit and Fun Playscapes, 200 Overocker road, Bldg. 2, Poughkeepsie, NY, 12603, (800)681-0684, info@fitandfunllc.com , Color: Purple **ADD1**~~
 - k) Tree Pose, #ST 5106 as manufactured by Fit and Fun Playscapes, 200 Overocker road, Bldg. 2, Poughkeepsie, NY, 12603, (800)681-0684, info@fitandfunllc.com , Color: Blue
 - ~~l) Sprint, #ST 5079, as manufactured by Fit and Fun Playscapes, 200 Overocker road, Bldg. 2, Poughkeepsie, NY, 12603, (800)681-0684, info@fitandfunllc.com , Color: Magenta **ADD1**~~
 - m) Hop, #ST 5075, as manufactured by Fit and Fun Playscapes, 200 Overocker road, Bldg. 2, Poughkeepsie, NY, 12603, (800)681-0684, info@fitandfunllc.com , Color: Orange
 - n) Peaceful Warrior, #ST 5107, as manufactured by Fit and Fun Playscapes, 200 Overocker road, Bldg. 2, Poughkeepsie, NY, 12603, (800)681-0684, info@fitandfunllc.com , Color: Cyan
- 4) Schroeder Elementary:

- a) Squats, #ST 5069 as manufactured by Fit and Fun Playscapes, 200 Overocker road, Bldg. 2, Poughkeepsie, NY, 12603, (800)681-0684, info@fitandfunllc.com , Color: Green
 - b) Lunges, #ST 5070, as manufactured by Fit and Fun Playscapes, 200 Overocker road, Bldg. 2, Poughkeepsie, NY, 12603, (800)681-0684, info@fitandfunllc.com , Color: Purple
 - c) Jumping Jacks, #ST 5071, as manufactured by Fit and Fun Playscapes, 200 Overocker road, Bldg. 2, Poughkeepsie, NY, 12603, (800)681-0684, info@fitandfunllc.com , Color: Blue
 - d) Side Jump, #ST 5076 as manufactured by Fit and Fun Playscapes, 200 Overocker road, Bldg. 2, Poughkeepsie, NY, 12603, (800)681-0684, info@fitandfunllc.com , Color: Magenta
 - e) High Knees, #ST 5080 as manufactured by Fit and Fun Playscapes, 200 Overocker road, Bldg. 2, Poughkeepsie, NY, 12603, (800)681-0684, info@fitandfunllc.com , Color: Cyan
 - f) Step, #ST 5104 as manufactured by Fit and Fun Playscapes, 200 Overocker road, Bldg. 2, Poughkeepsie, NY, 12603, (800)681-0684, info@fitandfunllc.com , Color: Red
 - g) Tight Rope, #ST 5105 as manufactured by Fit and Fun Playscapes, 200 Overocker road, Bldg. 2, Poughkeepsie, NY, 12603, (800)681-0684, info@fitandfunllc.com , Color: Yellow
 - h) Hop, #ST 5075, as manufactured by Fit and Fun Playscapes, 200 Overocker road, Bldg. 2, Poughkeepsie, NY, 12603, (800)681-0684, info@fitandfunllc.com , Color: Orange
- 5) Wass Elementary:
- a) Squats, #ST 5069 as manufactured by Fit and Fun Playscapes, 200 Overocker road, Bldg. 2, Poughkeepsie, NY, 12603, (800)681-0684, info@fitandfunllc.com , Color: Green
 - b) Lunges, #ST 5070, as manufactured by Fit and Fun Playscapes, 200 Overocker road, Bldg. 2, Poughkeepsie, NY, 12603, (800)681-0684, info@fitandfunllc.com , Color: Purple
 - c) Jumping Jacks, #ST 5071, as manufactured by Fit and Fun Playscapes, 200 Overocker road, Bldg. 2, Poughkeepsie, NY, 12603, (800)681-0684, info@fitandfunllc.com , Color: Blue
 - d) Jump Rope, ST #5065, as manufactured by Fit and Fun Playscapes, 200 Overocker road, Bldg. 2, Poughkeepsie, NY, 12603, (800)681-0684, info@fitandfunllc.com , Color: Magenta
 - e) Side Jump, #ST 5076 as manufactured by Fit and Fun Playscapes, 200 Overocker road, Bldg. 2, Poughkeepsie, NY, 12603, (800)681-0684, info@fitandfunllc.com , Color: Orange
 - f) High Knees, #ST 5080 as manufactured by Fit and Fun Playscapes, 200 Overocker road, Bldg. 2, Poughkeepsie, NY, 12603, (800)681-0684, info@fitandfunllc.com , Color: Cyan
 - g) Dancer Pose, #ST 5108, as manufactured by Fit and Fun Playscapes, 200 Overocker road, Bldg. 2, Poughkeepsie, NY, 12603, (800)681-0684, info@fitandfunllc.com , Color: Red

- h) Star Pose, ST #5112 as manufactured by Fit and Fun Playscapes, 200 Overocker road, Bldg. 2, Poughkeepsie, NY, 12603, (800)681-0684, info@fitandfunllc.com , Color: Yellow
- i) Step, #ST 5104 as manufactured by Fit and Fun Playscapes, 200 Overocker road, Bldg. 2, Poughkeepsie, NY, 12603, (800)681-0684, info@fitandfunllc.com , Color: Green
- j) Tight Rope, #ST 5105 as manufactured by Fit and Fun Playscapes, 200 Overocker road, Bldg. 2, Poughkeepsie, NY, 12603, (800)681-0684, info@fitandfunllc.com , Color: Purple
- k) Tree Pose, #ST 5106 as manufactured by Fit and Fun Playscapes, 200 Overocker road, Bldg. 2, Poughkeepsie, NY, 12603, (800)681-0684, info@fitandfunllc.com , Color: Blue
- l) Sprint, #ST 5079, as manufactured by Fit and Fun Playscapes, 200 Overocker road, Bldg. 2, Poughkeepsie, NY, 12603, (800)681-0684, info@fitandfunllc.com , Color: Magenta
- m) Hop, #ST 5075, as manufactured by Fit and Fun Playscapes, 200 Overocker road, Bldg. 2, Poughkeepsie, NY, 12603, (800)681-0684, info@fitandfunllc.com , Color: Orange
- n) Peaceful Warrior, #ST 5107, as manufactured by Fit and Fun Playscapes, 200 Overocker road, Bldg. 2, Poughkeepsie, NY, 12603, (800)681-0684, info@fitandfunllc.com , Color: Cyan
- 6) Wattles Elementary:
 - a) Squats, #ST 5069 as manufactured by Fit and Fun Playscapes, 200 Overocker road, Bldg. 2, Poughkeepsie, NY, 12603, (800)681-0684, info@fitandfunllc.com , Color: Green
 - b) Lunges, #ST 5070, as manufactured by Fit and Fun Playscapes, 200 Overocker road, Bldg. 2, Poughkeepsie, NY, 12603, (800)681-0684, info@fitandfunllc.com , Color: Purple
 - c) Jumping Jacks, #ST 5071, as manufactured by Fit and Fun Playscapes, 200 Overocker road, Bldg. 2, Poughkeepsie, NY, 12603, (800)681-0684, info@fitandfunllc.com , Color: Blue
 - d) Jump Rope, ST #5065, as manufactured by Fit and Fun Playscapes, 200 Overocker road, Bldg. 2, Poughkeepsie, NY, 12603, (800)681-0684, info@fitandfunllc.com , Color: Magenta
 - e) Side Jump, #ST 5076 as manufactured by Fit and Fun Playscapes, 200 Overocker road, Bldg. 2, Poughkeepsie, NY, 12603, (800)681-0684, info@fitandfunllc.com , Color: Orange
 - f) High Knees, #ST 5080 as manufactured by Fit and Fun Playscapes, 200 Overocker road, Bldg. 2, Poughkeepsie, NY, 12603, (800)681-0684, info@fitandfunllc.com , Color: Cyan
 - g) Dancer Pose, #ST 5108, as manufactured by Fit and Fun Playscapes, 200 Overocker road, Bldg. 2, Poughkeepsie, NY, 12603, (800)681-0684, info@fitandfunllc.com , Color: Red
 - h) Star Pose, ST #5112 as manufactured by Fit and Fun Playscapes, 200 Overocker road, Bldg. 2, Poughkeepsie, NY, 12603, (800)681-0684, info@fitandfunllc.com , Color: Yellow

- i) Step, #ST 5104 as manufactured by Fit and Fun Playscapes, 200 Overocker road, Bldg. 2, Poughkeepsie, NY, 12603, (800)681-0684, info@fitandfunllc.com , Color: Green
 - j) Tight Rope, #ST 5105 as manufactured by Fit and Fun Playscapes, 200 Overocker road, Bldg. 2, Poughkeepsie, NY, 12603, (800)681-0684, info@fitandfunllc.com , Color: Purple
 - k) Tree Pose, #ST 5106 as manufactured by Fit and Fun Playscapes, 200 Overocker road, Bldg. 2, Poughkeepsie, NY, 12603, (800)681-0684, info@fitandfunllc.com , Color: Blue
 - l) Sprint, #ST 5079, as manufactured by Fit and Fun Playscapes, 200 Overocker road, Bldg. 2, Poughkeepsie, NY, 12603, (800)681-0684, info@fitandfunllc.com , Color: Magenta
 - m) Hop, #ST 5075, as manufactured by Fit and Fun Playscapes, 200 Overocker road, Bldg. 2, Poughkeepsie, NY, 12603, (800)681-0684, info@fitandfunllc.com , Color: Orange
 - n) Peaceful Warrior, #ST 5107, as manufactured by Fit and Fun Playscapes, 200 Overocker road, Bldg. 2, Poughkeepsie, NY, 12603, (800)681-0684, info@fitandfunllc.com , Color: Cyan
- B. Asphalt Coating Sealer: Mineral filled asphalt emulsion pavement sealer, complying with ASTM D8099.
1. Product: MasterSeal, Product #S1010 as manufactured by SealMaster, <https://sealmaster.net/>, or approved substitute.

PART 3 - EXECUTION

3.1 EXAMINATION

- A. Verify that pavement surfacing is smooth and clean, free of debris before painting.
- B. Notify Construction Manager in writing of any unsatisfactory conditions. Proceed with painting only after unsatisfactory conditions have been corrected.

3.2 PAVEMENT MARKING

- A. Do not apply pavement-marking paint until layout, colors, and placement have been verified with Architect.
- B. Allow paving to age for 30 days before starting pavement marking.
- C. Sweep and clean surface to eliminate loose material and dust.
- D. Apply paint with mechanical equipment to produce pavement markings, of dimensions indicated, with uniform, straight edges. Apply at manufacturer's recommended rates to provide a minimum wet film thickness of 15 mils.

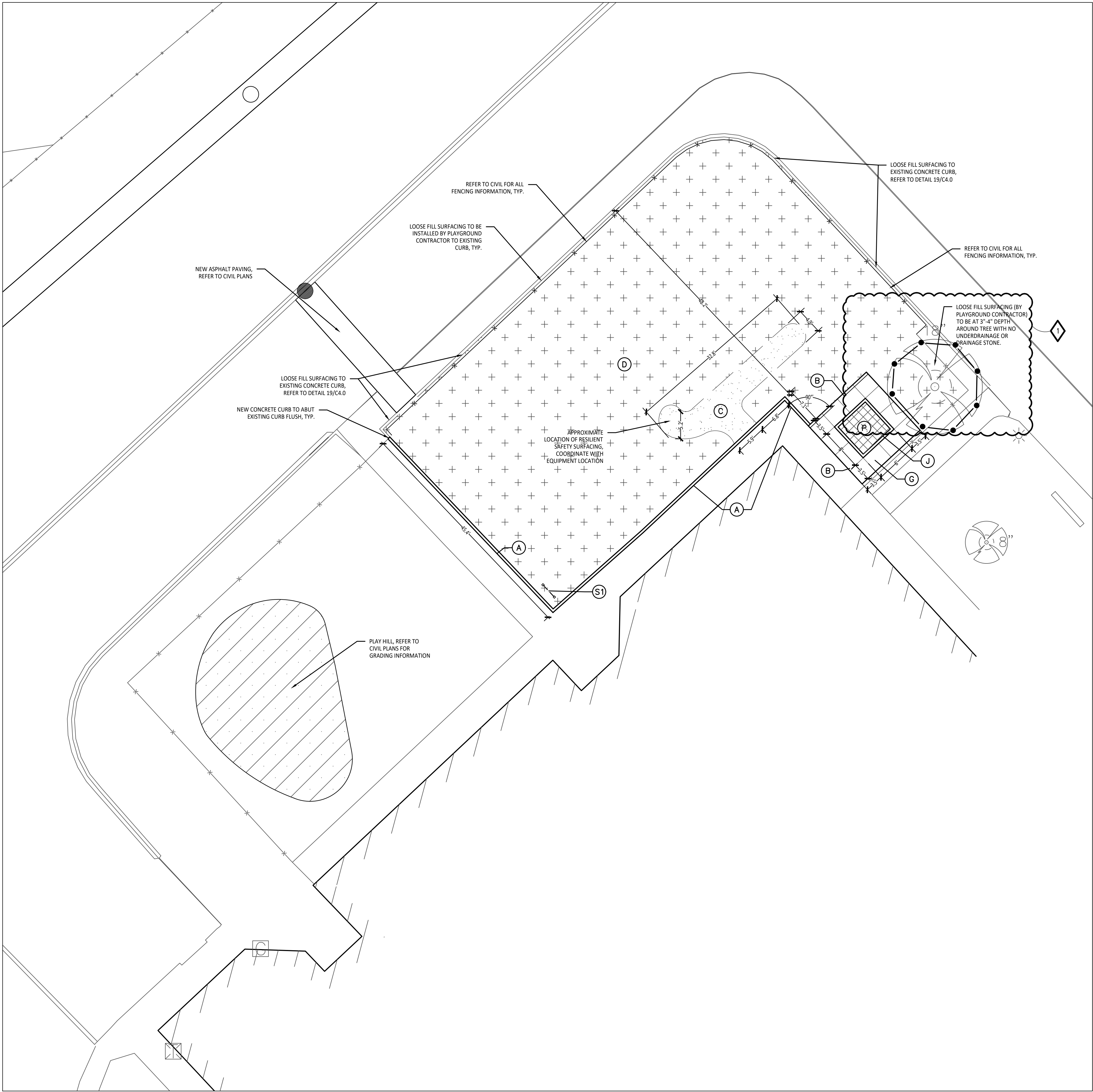
3.3 ASPHALT COATING SEALER

- A. Sweep and clean surface to eliminate loose material and dust.
- B. Apply sealer per manufacturer's written instructions.

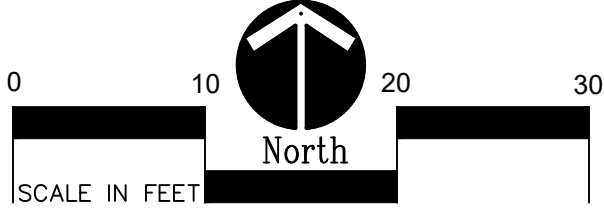
END OF SECTION







1 Playground Layout Enlargement Plan - Kindergarten
Scale: 1" = 10'-0"



CONTRACTOR COORDINATION NOTES:

- SITE CONTRACTOR AND PLAYGROUND CONTRACTOR ARE REQUIRED TO COORDINATE BOTH WITH EACH OTHER AND WITH CONSTRUCTION MANAGER. THE INSTALLATION PROCESS FOR THE PLAYGROUND SAFETY SURFACING SHOULD BE AS FOLLOWS:
- * SITE CONTRACTOR TO EXCAVATE AREA AS SHOWN ON CONSTRUCTION DOCUMENTS.
- * SITE CONTRACTOR TO INSTALL UNDERDRAINS AS SHOWN ON CONSTRUCTION DOCUMENTS. SITE CONTRACTOR TO USE LAYOUT SERVICES FROM CAD FILES FOR INSTALLATION TO ENSURE THAT THE UNDERDRAINS ARE INSTALLED IN THE CORRECT LOCATIONS.
- * THE PLAYGROUND CONTRACTOR WILL THEN INSTALL THE POSTS AND FOOTINGS FOR ALL EQUIPMENT.
- * THE SITE CONTRACTOR WILL THEN INSTALL THE DRAINAGE AGGREGATE, TAKING CARE TO NOT DAMAGE THE POSTS OR POWDERCOATING OF THE PLAY EQUIPMENT. THE SITE CONTRACTOR WILL ALSO INSTALL THE ADDITIONAL ENGINEERED FILL FOR THE RESILIENT SURFACING AREAS. THE SITE CONTRACTOR MUST COORDINATE THE DEPTHS WITH THE PLAYGROUND CONTRACTOR PRIOR TO INSTALLATION AS THE DEPTHS VARY BETWEEN PLAYGROUND CONTRACTORS.
- * THE PLAYGROUND CONTRACTOR WILL INSTALL THE GEOTEXTILE FABRIC, PLAYGROUND EQUIPMENT, AND SAFETY SURFACING.

BARRIER-FREE NOTES

BARRIER-FREE PARKING AND ACCESSIBLE ROUTE(S) MUST COMPLY WITH THE AMERICANS WITH DISABILITIES ACT AND MICHIGAN BARRIER-FREE CODE REQUIREMENTS, INCLUDING BUT NOT LIMITED TO THE FOLLOWING:

- 1:50 (2%) MAXIMUM CROSS SLOPE ON ACCESSIBLE ROUTE
- NO CHANGES IN LEVEL GREATER THAN 1/2" ALONG ACCESSIBLE ROUTE
- 1:20 (5%) MAXIMUM LONGITUDINAL SLOPE ON ACCESSIBLE ROUTE (EXCEPT WHERE RAMPS ARE PROVIDED)
- 1:50 (2%) MAXIMUM SLOPE (IN ANY DIRECTION) IN B.F. PARKING AND ACCESS AISLES.

NOTE: VERIFY LOCATION OF NEW PLAYGROUND EQUIPMENT PRIOR TO INSTALLATION OF ANY CONCRETE CURB. CONCRETE CURB TO BE INSTALLED OUTSIDE OF FALL SAFETY ZONE OF EACH PIECE OF EQUIPMENT PER ASTM 1487-05 AND MANUFACTURER'S WRITTEN RECOMMENDATIONS.

NOTE: PLAYGROUND EQUIPMENT AND SURFACING PURCHASE AND INSTALLATION IS UNDER SEPARATE CONTRACT AND IS NOT INCLUDED IN THIS BID PACKAGE. CONTRACTOR IS REQUIRED TO COORDINATE INSTALLATION OF PLAYGROUND EQUIPMENT AND SURFACING WITH PLAYGROUND INSTALLER PRIOR TO ANY EXCAVATION AND CONCRETE CURBING OR PAVING INSTALLATION.

LAYOUT NOTES:

- SURVEY OF EXISTING CONDITIONS PROVIDED BY PEA GROUP, 1849 POND RUN, AUBURN HILLS, MICHIGAN 48326, (248)689-9090.
- PAVEMENT DIMENSIONS AND RADII ARE TO EDGE OF PAVEMENT OR BACK OF CURB. PLASTIC EDGING IS MEASURED TO/FROM CENTER OF PIN.
- DISCREPANCIES BETWEEN SITE AND PLANS SHOULD BE REPORTED TO THE PROJECT MANAGER IMMEDIATELY.
- VERIFY LOCATIONS OF ALL BELOW GRADE UTILITIES PRIOR TO BEGINNING WORK. 72 HOURS BEFORE YOU DIG CALL "MISS DIG" AT 1-800-482-7171.
- PROVIDE BARRIER FREE PARKING SIGNS FOR ALL BARRIER FREE PARKING SPACES. ALL SIGNS TO COMPLY WITH THE MDOT MICHIGAN MANUAL OF UNIFORM TRAFFIC CONTROL DEVICES.
- SITE LAYOUT POINTS SHOULD BE ESTABLISHED AND PROTECTED FOR FUTURE SITE WORK.

PROPOSED FEATURES LEGEND:

SYMBOL	DESCRIPTION	KEY	DESCRIPTION	DETAIL
	RESILIENT SURFACING (BY OTHERS)	(A)	STRAIGHT FACE CONCRETE CURB	6 /C4.0
	LOOSE FILL SAFETY SURFACING (BY OTHERS)	(B)	THICKENED EDGE CONCRETE	11 /C4.0
	N/A	(C)	RESILIENT SURFACING (BY OTHERS)	7 /C4.0
	N/A	(D)	LOOSE FILL SAFETY SURFACING (BY OTHERS)	3 & 9 /C4.0
	N/A	(E)	PLASTIC PLAY EDGING (BY OTHERS)	12, 13, & 18 /C4.0
	N/A	(F)	N/A	N/A
	N/A	(G)	CONCRETE WALK	2 /C4.0
	N/A	(H)	PLAY AREA ENTRANCE RAMP	16 /C4.0
	N/A	(J)	CONCRETE SAND BOX	15 /C4.0
	N/A	(K)	BASKETBALL HOOP POLE (BY OTHERS)	17 /C4.0
	N/A	(L)	N/A	N/A
	N/A	(M)	N/A	N/A
	N/A	(N)	N/A	N/A
	N/A	(P)	PLAY SAND	REFER TO SPECS
	PLAY HILL, REFER TO CIVIL DRAWINGS			
	PLASTIC PLAY EDGING, BY OTHERS REFER TO PLAYGROUND CONTRACTOR'S DRAWINGS AND SPECS			
	STRAIGHT FACE CONCRETE CURB			
	THICKENED EDGE CONCRETE			
	INTEGRAL WALK AND CURB			
	BARRIER-FREE PLAY AREA ENTRANCE RAMP			
	CHAIN LINK FENCE, REFER TO CIVIL PLANS			
	ENLARGEMENT LIMIT LINE			
		SIGNS		
		(S)	COMMUNICATION BOARD; PURCHASED BY OWNER, INSTALLED BY SITE CONTRACTOR	SEE SPECS.

CONSULTANT



141 E. Michigan Avenue, Suite 500
Kalamazoo Michigan 49007
Phone (269) 381-3357
Fax (269) 381-2944

Landscape Architecture
Urban Planning
Parks & Recreation
Campus & Institutional Planning
Camp Planning & Design

PROJECT TITLE

**Hamilton
Elementary School
Playground Remodel
Bld Package No.01B**

**Troy School District
Troy, Michigan**

**DRAWING TITLE
Playground Layout
Enlargement Plans**

ISSUE DATES

10-22-2024	ADDENDUM #1
10-03-2024	CONSTRUCTION DOCUMENTS
DATE:	ISSUED FOR:
DRAWN	DID
CHECKED	DID
APPROVED	DID

PROJECT NO.

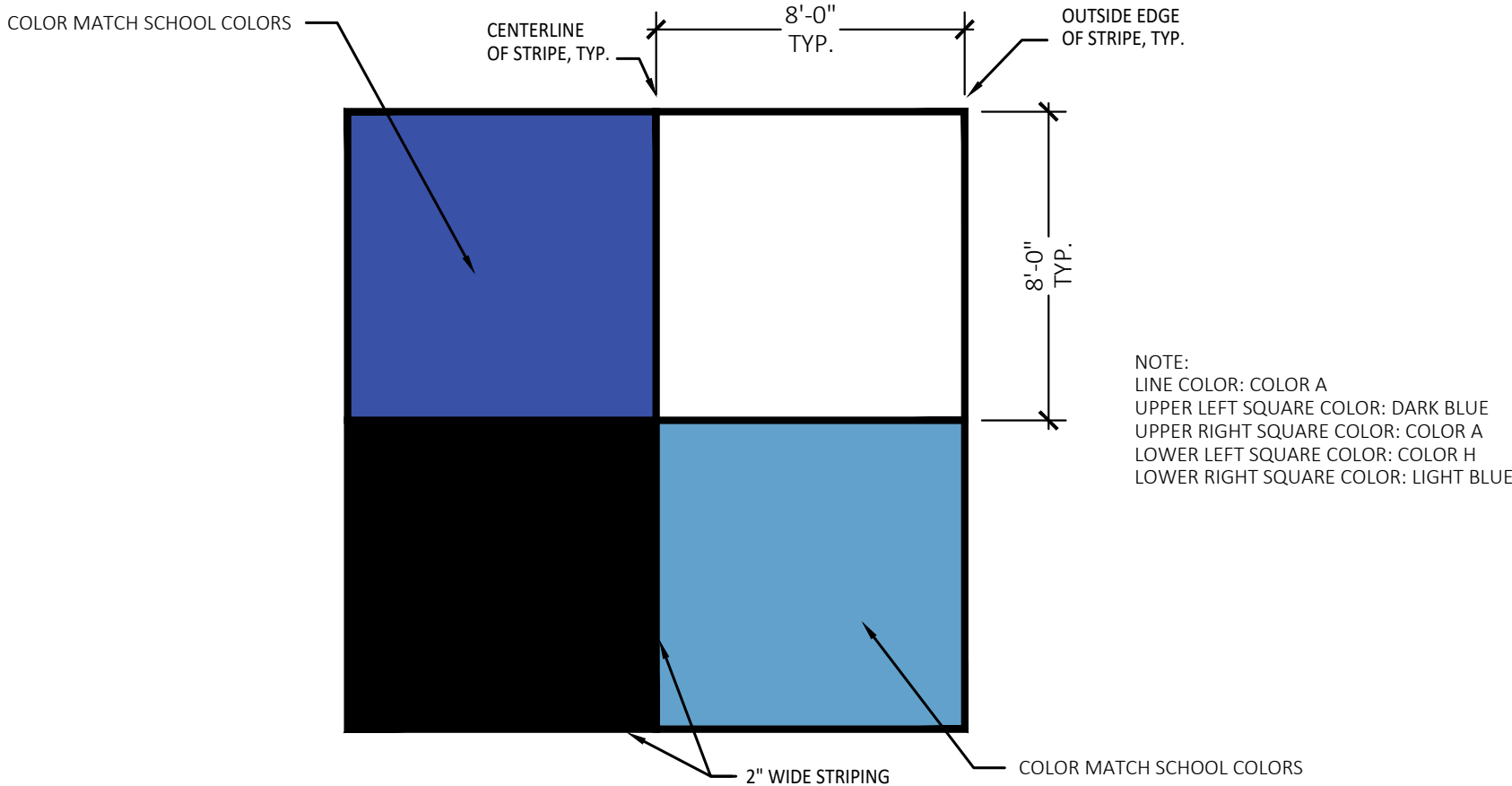
22089B

DRAWING NO.

C2.1

2 4 Square Layout Detail

Not to Scale





CONSULTANT

t: 844.813.2949
www.peagroup.com

Playground Remodel Bid Package No.01B

Troy School District
Troy, Michigan

DRAWING TITLE
Dimension & Paving Plan

ISSUE DATES

10-22-2024	ADDENDUM 1
10-02-2024	CONSTRUCTION DOCUMENTS
09-10-2024	OWNER REVIEW
08-21-2024	INTERNAL COORDINATION
07-24-2024	DESIGN DEVELOPMENT

DATE: ISSUED FOR:

DRAWN

DRAWN J

CHECKED J

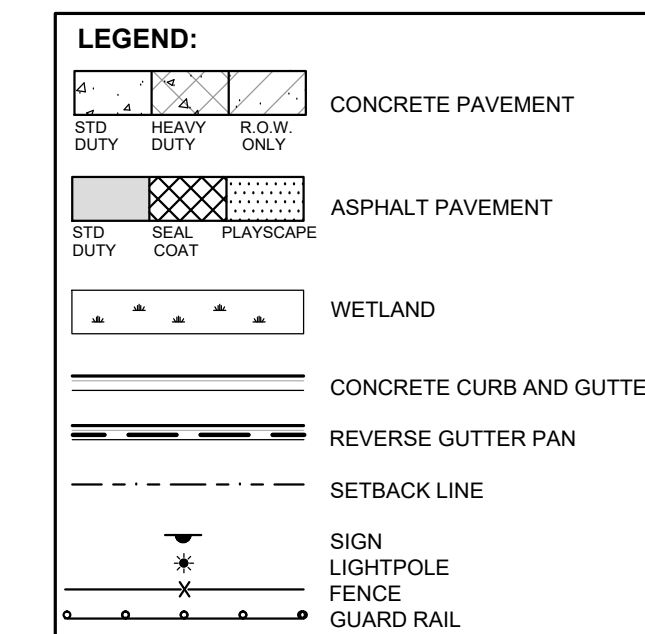
APPROVED T

PROJECT NO. _____

22089B

DRAWING NO.

CE-2.2.0

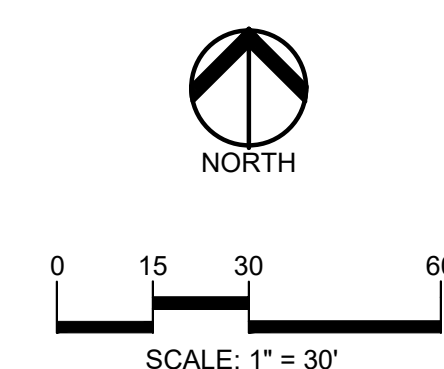


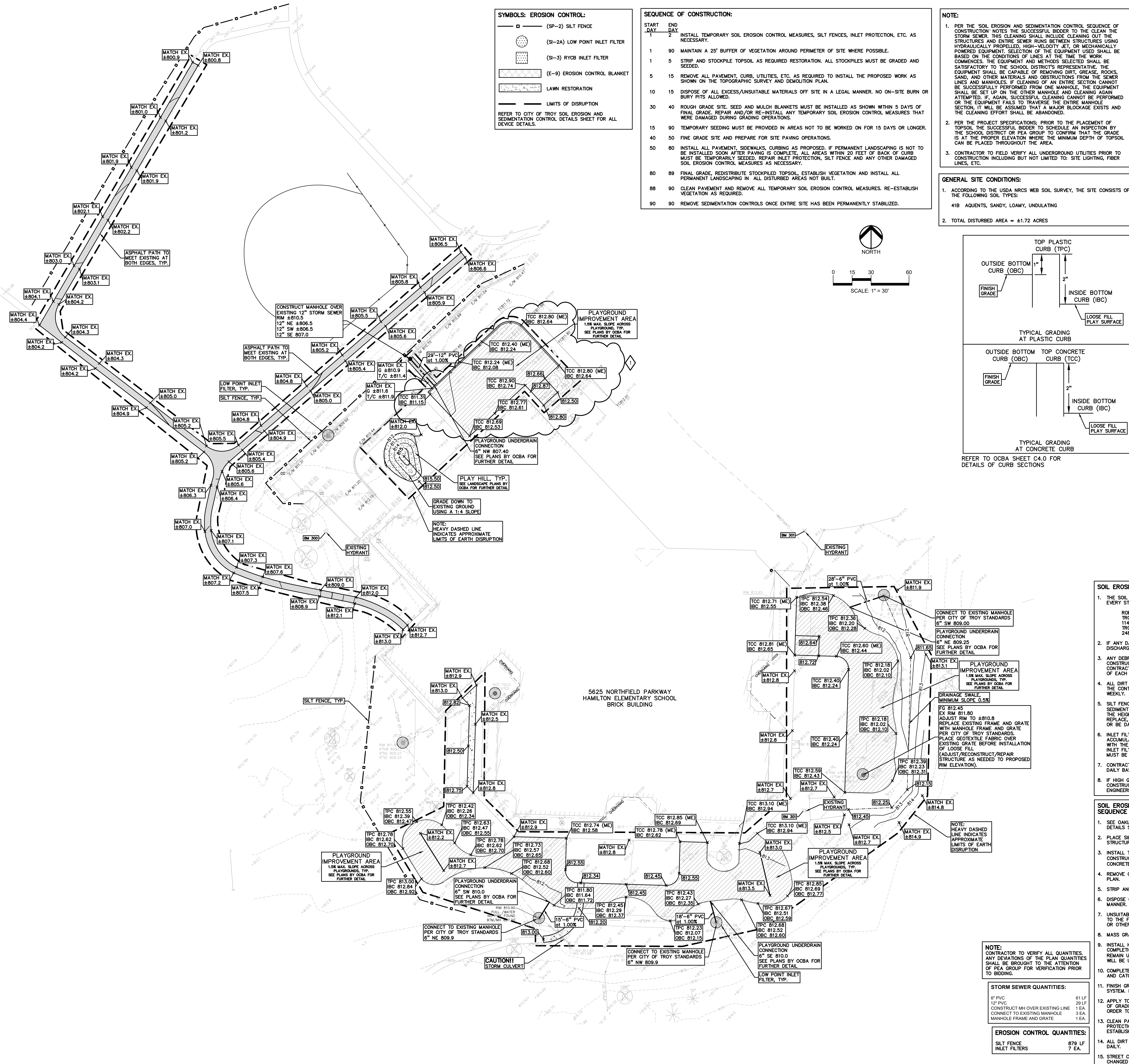
NOTES:

1. CONTRACTOR TO VERIFY ALL QUANTITIES SHOWN ON THE PLANS, ANY DEVIATIONS TO THE PLAN QUANTITIES SHALL BE REPORTED TO THE CITY ENGINEER, PEAK DISTRICT AND PEAK GROUP, IN WRITING PER THE BID PACKAGE, FOR VERIFICATION PRIOR TO BIDDING.
2. ALL DIMENSIONS SHOWN ARE TO BACK OF CURB, FACE OF SIDEWALK, CENTER OF MANHOLE/CATCH BASIN UNLESS OTHERWISE NOTED.
3. DOWEL INTO EXISTING CURB AND GUTTER #4 WITH EPOXY COATED #4 BAR CONTINUOUS BETWEEN EXISTING AND PROPOSED CURBING.
4. REFER TO NOTES AND DETAILS SHEET FOR PAVING DETAILS.
5. CONTRACTOR TO FIBER LINE ALL UNDERGROUND UTILITIES PRIOR TO CONSTRUCTION. BIDDING NOT LIMITED TO: SITE LIGHTING, FIBER LINES, ETC.
6. CONTRACTOR TO REMOVE AND REPLACE SIGNS AND POSTS PER DETAILS ON SHEET C-4.0. ALL SIGNS AND ANY POSTS IN POOR CONDITION SHALL BE REPLACED BY THE OWNER. ALL POSTS DAMAGED OR OTHERWISE NOT IN USABLE CONDITION, SHALL BE DISPOSED OF AT NO ADDITIONAL COST TO THE OWNER.
7. FOR THE TWO (2) CATCH BASINS, LOCATED IN THE WORK AREA, BIDDERS ARE TO INCLUDE RECONSTRUCTION OF THESE STRUCTURES (GREATER THAN 12-INCHES IN DEPTH FROM RILEY ELEVATION) AND REPAIR OF THE BID PACKAGE. THE SUCCESSFUL BIDDER WILL BE PAID FOR REPAIRING EACH STRUCTURE BASED ON THE ACTUAL DEPTH OF REPAIR WITHIN THE STRUCTURAL ADJUSTMENT (WITHIN 12-INCHES OF RILEY ELEVATION) OR STRUCTURAL RECONSTRUCTION (GREATER THAN 12-INCHES IN DEPTH) FROM RILEY ELEVATION. THE BIDDER SHALL DETERMINE THE SCOPE OF WORK DETERMINED AND APPROVED PRIOR TO THE COMMENCEMENT OF WORK. THE REPAIR OF EACH STRUCTURE SHALL BE INCLUDED IN THE UNIT PRICE FOR BOTH STRUCTURAL ADJUSTMENT AND STRUCTURAL RECONSTRUCTION.

SUBGRADE UNDERCUTTING NOTES:

1. TO MINIMIZE SUBGRADE INSTABILITY AND UNDERCUTS, THE SUBGRADE SHALL NOT BE LEFT EXPOSED TO PRECIPITATION AN OR OTHER OPERATIONS THAT COULD CAUSE EROSION DURING THE SUMMER MONTHS TO ENSURE DRY, WARM WEATHER. ADDITIONALLY, THE SUBGRADE MAY BECOME UNSTEADY UNDER REPEATED TRAFFIC DURING THE WINTER MONTHS. THEREFORE, CONSTRUCTION EQUIPMENT SHOULD BE LIMITED ON THE EXPOSED SUBGRADE.
2. SUBGRADE UNDERCUT SHALL BE EVALUATED BY A QUALIFIED ENGINEERING TECHNICIAN TO DETERMINE IF SUBGRADE STABILIZATION IS NECESSARY. UNDERCUT EXCAVATIONS SHALL BE FILLED WITH CRUSHED GRANULAR MATERIAL TO THE SAME DEPTH IN AN ENGINEERED MANNER. LIFT THICKNESS SHALL NOT EXCEED 9 INCHES. THE USE OF TRI-AXIAL GEOTEXTILE MAY BE REQUIRED TO PREVENT FURTHER UNDERCUTS. THE CONTRACTOR SHALL DISTRICT AND PER THE UNIT PRICE PROVIDED WITH THE QUANTITIES FOR THIS BID.
3. THE QUANTITY FOR SUBGRADE UNDERCUT FOR EACH SITE SHALL BE INCLUDED IN THE BASE BID. THIS ITEM IS CONSIDERED AN ALLOWANCE AND FINAL PAYMENT WILL BE BASED ON THE ACTUAL FOOTAGE OF COMPACTED IN PLACE STONE PER THE UNIT PRICE PROVIDED IN THE BID PACKAGE.
4. ALL ENGINEERED FILL SHALL BE COMPACTED TO A DENSITY OF AT LEAST 95 PERCENT OF THE MAXIMUM DENSITY DETERMINED BY STANDARD PROCTOR METHOD. THE CONTRACTOR SHALL TESTING ALL ENGINEERED FILL MATERIAL SHALL BE PLACED AND COMPACTED AT APPROXIMATELY THE OPTIMUM MOISTURE. THE CONTRACTOR SHALL BE RESPONSIBLE FOR PROOF OF DENSITY. FILL NOT SHOULD FILL BE PLACED ON A FROZEN SUBGRADE.
5. SUBGRADE UNDERCUT DRAIN TILE SHALL BE EVALUATED BY A QUALIFIED ENGINEERING TECHNICIAN TO DETERMINE IF SUBGRADE STABILIZATION IS NECESSARY. DRAIN TILE SHALL BE PLACED WITHIN ANY UNDERCUT AREA AND CONNECTED TO THE CLOSEST EXISTING DRAIN TO PREVENT FURTHER UNDERCUTS. THE CONTRACTOR SHALL THE GRANULAR SLOES IN UNDERCUTS AND CREATING "BLOSSOM" IN THE COARSELY SOLIDS.
6. THE QUANTITY FOR SUBGRADE UNDERCUT DRAIN TILE (4") FOR EACH SITE SHALL BE INCLUDED IN THE BASE BID. THIS ITEM IS CONSIDERED AN ALLOWANCE AND FINAL PAYMENT WILL BE BASED ON THE ACTUAL FOOTAGE OF COMPACTED IN PLACE STONE PER THE UNIT PRICE PROVIDED IN THE BID PACKAGE.





UTILITY LEGEND:

- EX. CH. ELEC. POLE & GUY WIRE
- EX. U.G. CABLE TV & PEDESTAL
- EX. U.G. COMMUNICATION LINE, PEDESTAL & MANHOLE
- EX. U.G. ELEC. MANHOLE, METER & HANDHOLE
- EX. GAS LINE
- EX. GAS VALVE & GAS LINE MARKER
- EX. TRANSFORMER & IRRIGATION VALVE
- EX. WATER MAIN
- EX. HYDRANT, GATE VALVE & POST INDICATOR VALVE
- EX. WATER VALVE BOX & SHUTOFF
- EX. SANITARY SEWER
- EX. SANITARY CLEANOUT & MANHOLE
- EX. COMBINED SEWER MANHOLE
- EX. STORM SEWER
- EX. CLEANOUT & MANHOLE
- EX. SQUARE, ROUND, & BEEHIVE CATCH BASIN
- EX. YARD DRAIN & ROOF DRAIN
- EX. UNIDENTIFIED STRUCTURE
- PROPOSED WATER MAIN
- PROPOSED HYDRANT AND GATE VALVE
- PROPOSED TAPPING SLEEVE, VALVE & WELL
- PROPOSED POST INDICATOR VALVE
- PROPOSED SANITARY SEWER
- PROPOSED SANITARY CLEANOUT & MANHOLE
- PROPOSED STORM SEWER
- PROPOSED STORM SEWER CLEANOUT & MANHOLE
- PROPOSED CATCH BASIN, INLET & YARD DRAIN

BENCHMARKS:
(GPS DERIVED - NAVD83)

BM #300
DIMPLE ON A HYDRANT ON SOUTHWEST SIDE OF HYDRANT 39'
OFF NORTHWEST MOST BUILDING CORNER AND 136' SOUTHEAST
OF 30' TREE.
ELEV. - 814.69

BM #301
DIMPLE ON A HYDRANT LOCATED ON EAST SIDE OF HYDRANT 30'
OFF SOUTHEAST CORNER OF BUILDING AND 108' OFF SOUTH
FENCE, PERPENDICULAR.
ELEV. - 815.69

GRADING LEGEND:

- EXISTING SPOT ELEVATION
- PROPOSED SPOT ELEVATION
- EXISTING CONTOUR
- PROPOSED CONTOUR
- PROPOSED REVERSE GUTTER PAN
- PROPOSED RIDGE LINE
- PROPOSED SWALE/DITCH

ABBREVIATIONS:

T/C = TOP OF CURB
T/P = TOP OF PAVEMENT
T/S = TOP OF SIDEWALK
T/W = TOP OF WALL
T/C = TOP OF CONCRETE CURB
T/P = TOP OF PLASTIC CURB
I/C = INSIDE OF BOTTOM OF CURB
O/C = OUTSIDE BOTTOM OF CURB

G = GUTTER GRADE
F.G. = FINISH GRADE
R.M. = RIM ELEVATION
B.W. = BOTTOM OF WALL

REFER TO GRADING NOTES ON SHEET CE-2.4.0

EARTHWORK BALANCING NOTE:

THE CONTRACTOR SHALL BE RESPONSIBLE FOR IMPORTING OR EXPORTING ALL MATERIALS AS REQUIRED TO PROPERLY GRADE THIS PROJECT TO THE FINISHED ELEVATIONS SHOWN ON THE APPROVED PLANS. THE CONTRACTOR SHALL MAKE THEIR OWN DETERMINATION OF CUT AND FILL QUANTITIES AND ALLOW FOR REMOVAL OF EXCESS OR IMPORTATION OF ADDITIONAL MATERIAL AT NO ADDITIONAL COST TO THE OWNER.

SOIL EROSION MAINTENANCE SCHEDULE AND NOTES:

- THE SOIL EROSION CONTROLS WILL BE MAINTAINED WEEKLY AND AFTER EVERY STORM EVENT BY:
ROB CARSON
TROY SCHOOL DISTRICT
1140 RANKIN
TROY, OKLAHOMA COUNTY, MICHIGAN
248-823-4067
- IF ANY DAMAGE HAS OCCURRED AS A RESULT OF STORM WATER DISCHARGE FROM THE SITE, THE FOLLOWING STEPS SHALL BE IMPLEMENTED:
- ANY DEBRIS OR DIRT ON ANY PAVED AREA RESULTING FROM CONSTRUCTION TRAFFIC SHALL BE CLEANED IN A PROMPT MANNER BY THE CONTRACTOR. THE CONSTRUCTION DRIVE SHALL BE CLEANED AT THE END OF EACH DAY.
- ALL DIRT AND MUD TRACKED ONTO PAVED AREAS SHALL BE REMOVED BY THE CONTRACTOR DAILY BY SCRAPING. STREET SWEEPING IS REQUIRED WEEKLY.
- SILT FENCE MAINTENANCE SHALL INCLUDE THE REMOVAL OF ANY BUILT UP SEDIMENT WHEN THE SEDIMENT HEIGHT ACCUMULATES TO 1/3 TO 1/2 OF THE HEIGHT OF THE FENCE. THE CONTRACTOR IS RESPONSIBLE TO REMOVE, REPLACE, RETENCH OR REBARRICELL. THE SILTATION FENCE SHOULD IT FALL OR BE DAMAGED DURING CONSTRUCTION.
- INLET FILTER MAINTENANCE SHALL INCLUDE THE REMOVAL OF ANY ACCUMULATED SILT OR OTHER DEBRIS. THE REMOVAL OF SILT SHOULD BE WITH THE USE OF A STIFF BRISTLE BROOM OR SQUARE POINT SHOVEL. IF INLET FILTERS CAN NOT BE CLEANED OR ARE DAMAGED, THEN THE FABRIC MUST BE REPLACED.
- CONTRACTOR TO PROVIDE WATER TRUCK TO WATER DOWN THE SITE ON A DAILY BASIS AS REQUIRED TO MAINTAIN DUST CONTROL.
- IF HIGH GROUNDWATER IS ANTICIPATED OR ENCOUNTERED DURING CONSTRUCTION A DEWATERING PLAN MUST BE SUBMITTED TO THE CITY ENGINEERING DIVISION FOR REVIEW.

SOIL EROSION AND SEDIMENTATION CONTROL SEQUENCE OF CONSTRUCTION

- SEE OKLAHOMA COUNTY W.R.C. SOIL EROSION AND SEDIMENTATION CONTROL DETAILS SHEET FOR ALL SOIL EROSION CONTROL RELATED DETAILS.
- PLACE SILT FENCE & INSTALL INLET FILTERS ON EXISTING STORM SEWER STRUCTURES, ACCORDING TO PLANS.
- INSTALL TEMPORARY CRUSHED CONCRETE ACCESS DRIVE AT ALL CONSTRUCTION ENTRANCES. (80"x24"x6" MINIMUM OF 1 1/2-3" CRUSHED CONCRETE - NO FINES).
- REMOVE CURB, PAVEMENT, TREES, ETC. AS DIRECTED ON THE DEMOLITION PLAN.
- STRIP AND STOCKPILE TOPSOIL FOR RESTORATION REQUIREMENTS.
- DISPOSE OF ALL EXCESS, UNSUITABLE MATERIALS OFF SITE IN A LEGAL MANNER. NO BURN OR BURY PITS ALLOWED.
- UNUSABLE MATERIALS CONSIST OF, BUT ARE NOT NECESSARILY LIMITED TO THE FOLLOWING: CONCRETE, ASPHALT, TREES, BRUSH, STUMPS, ROOTS, OR OTHER MISCELLANEOUS DEBRIS OR TRASH.
- MASS GRADE THE SITE IN ACCORDANCE WITH THE PLANS.
- INSTALL HYDROSEED AS SHOWN ON THE PLAN WITHIN 5 DAYS OF COMPLETION OF MASS GRADING OR WHENEVER DISTURBED AREAS WILL REMAIN UNCHANGED FOR 30 DAYS OR GREATER. MINIMUM 3"-4" TOPSOIL WILL BE USED WHERE VEGETATION IS REQUIRED.
- COMPLETE ROUGH GRADING OF SITE. PLACE INLET FILTERS AT ALL INLETS AND CATCH BASINS, AS SHOWN.
- FINISH GRADE AND PAVE SITE AS PROPOSED TO DRAIN TO STORM SEWER SYSTEM. REPAIR INLET FILTERS AS REQUIRED.
- APPLY TOPSOIL, HYDROSEED TO ALL DISTURBED AREAS UPON COMPLETION OF GRADING. THE CONTRACTOR SHALL STAGE CONSTRUCTION ACTIVITIES IN ORDER TO MINIMIZE THE EXPOSURE OF UNSTABILIZED AREAS.
- CLEAN PAVEMENT AND STORM SEWERS. REMOVE SILT FENCE AND TREE PROTECTION FENCE, AND INLET FILTERS ONCE VEGETATION HAS BEEN ESTABLISHED.
- ALL DIRT AND MUD TRACKED ONTO PUBLIC ROADS SHALL BE REMOVED DAILY.
- STREET CATCH BASINS TO BE PERIODICALLY CLEANED AND FILTER CLOTH CHANGED AND MAINTAINED.

NOTE:
CONTRACTOR TO VERIFY ALL QUANTITIES. ANY DEVIATIONS OF THE PLAN QUANTITIES SHALL BE BROUGHT TO THE ATTENTION OF PEA GROUP FOR VERIFICATION PRIOR TO BIDDING.

STORM SEWER QUANTITIES:	
8" PVC	61 LF
12" PVC	29 LF
CONSTRUCT MH OVER EXISTING LINE	1 EA
CONNECT TO EXISTING MANHOLE	3 EA
MANHOLE FRAME AND GRATE	1 EA

EROSION CONTROL QUANTITIES:	
SILT FENCE	879 LF
INLET FILTERS	7 EA

TMP ARCHITECTURE INC.
1571 WEST SQUARE LAKE ROAD
BLOOMFIELD HILLS - MICHIGAN - 48302
PH - 248.338.4561 EX - 248.338.0223
EM - INFO@TMP-ARCHITECTURE.COM

REGISTRATION SEAL

CONSULTANT

t: 844.813.2949
www.peagroup.com

PROJECT TITLE

Hamilton Elementary School

5625 NORTHFIELD PARKWAY

Playground Remodel Bid Package No.01B

Troy School District
Troy, Michigan

DRAWING TITLE

Grading, Utility & Soil Erosion Control Plan

ISSUE DATAS

NO.	DATE	DESCRIPTION
1	10-22-2024	ADDENDUM 1
2	10-02-2024	CONSTRUCTION DOCUMENTS
3	09-10-2024	OWNER REVIEW
4	08-21-2024	INTERNAL COORDINATION
5	07-24-2024	DESIGN DEVELOPMENT

DATE: ISSUED FOR:

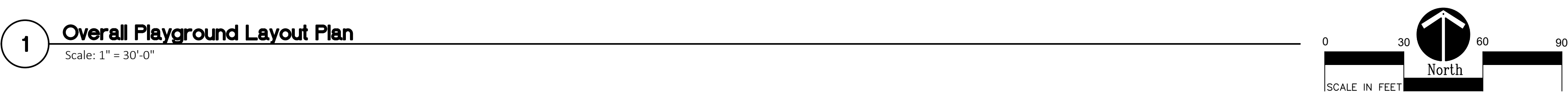
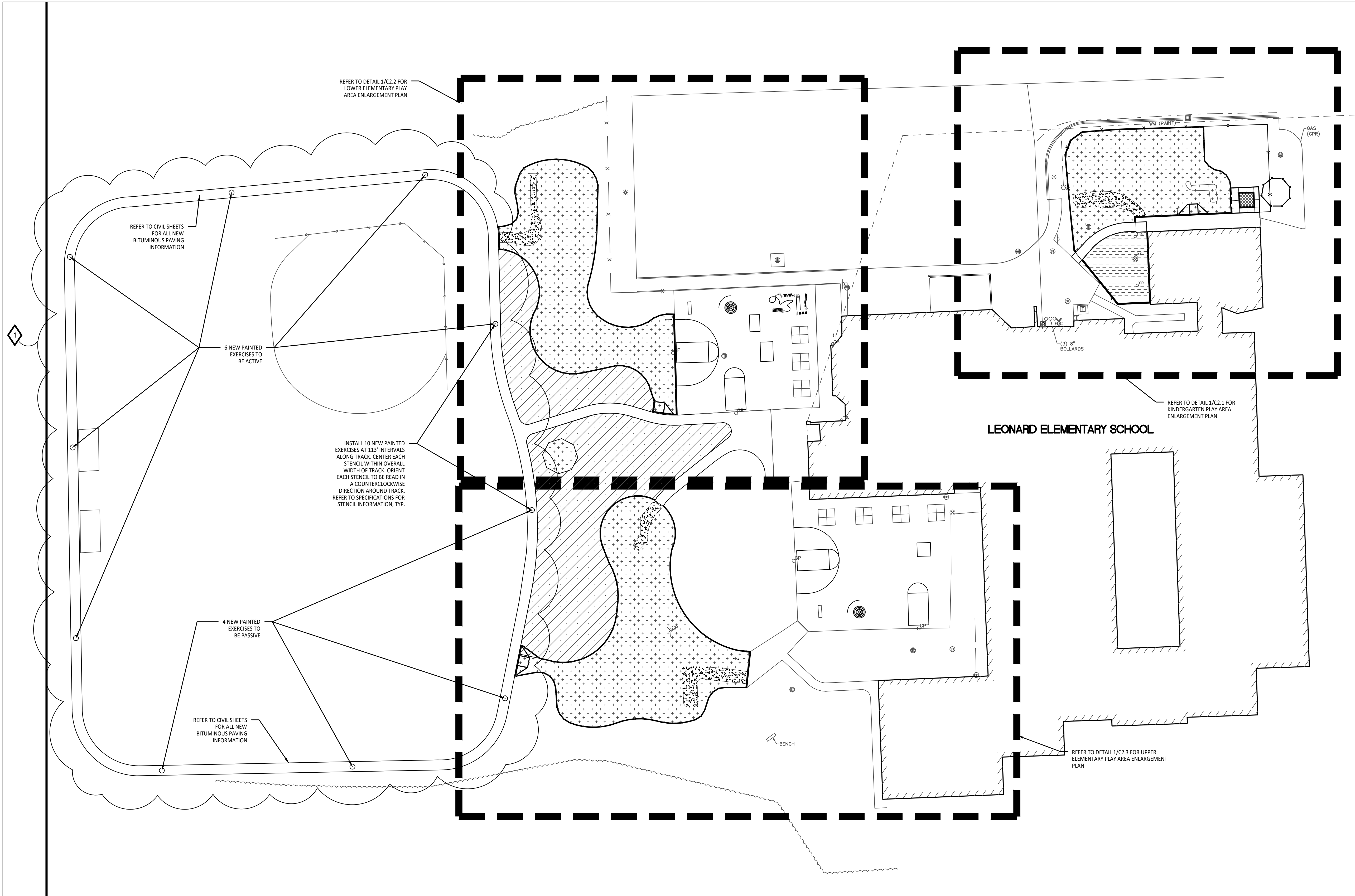
DRAWN	JG
CHECKED	JW
APPROVED	TD

PROJECT NO.

22089B

DRAWING NO.

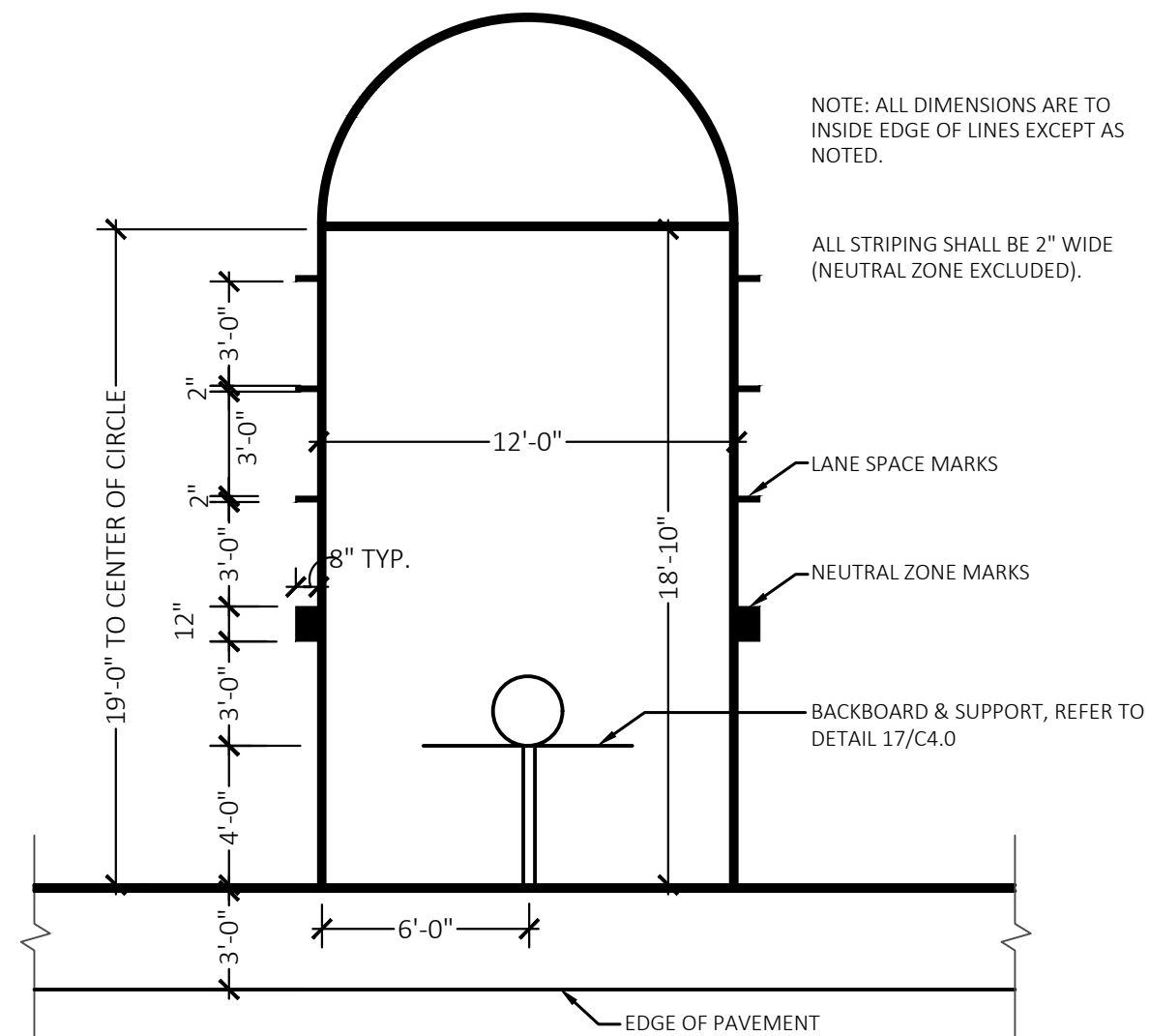
CE-2.3.0



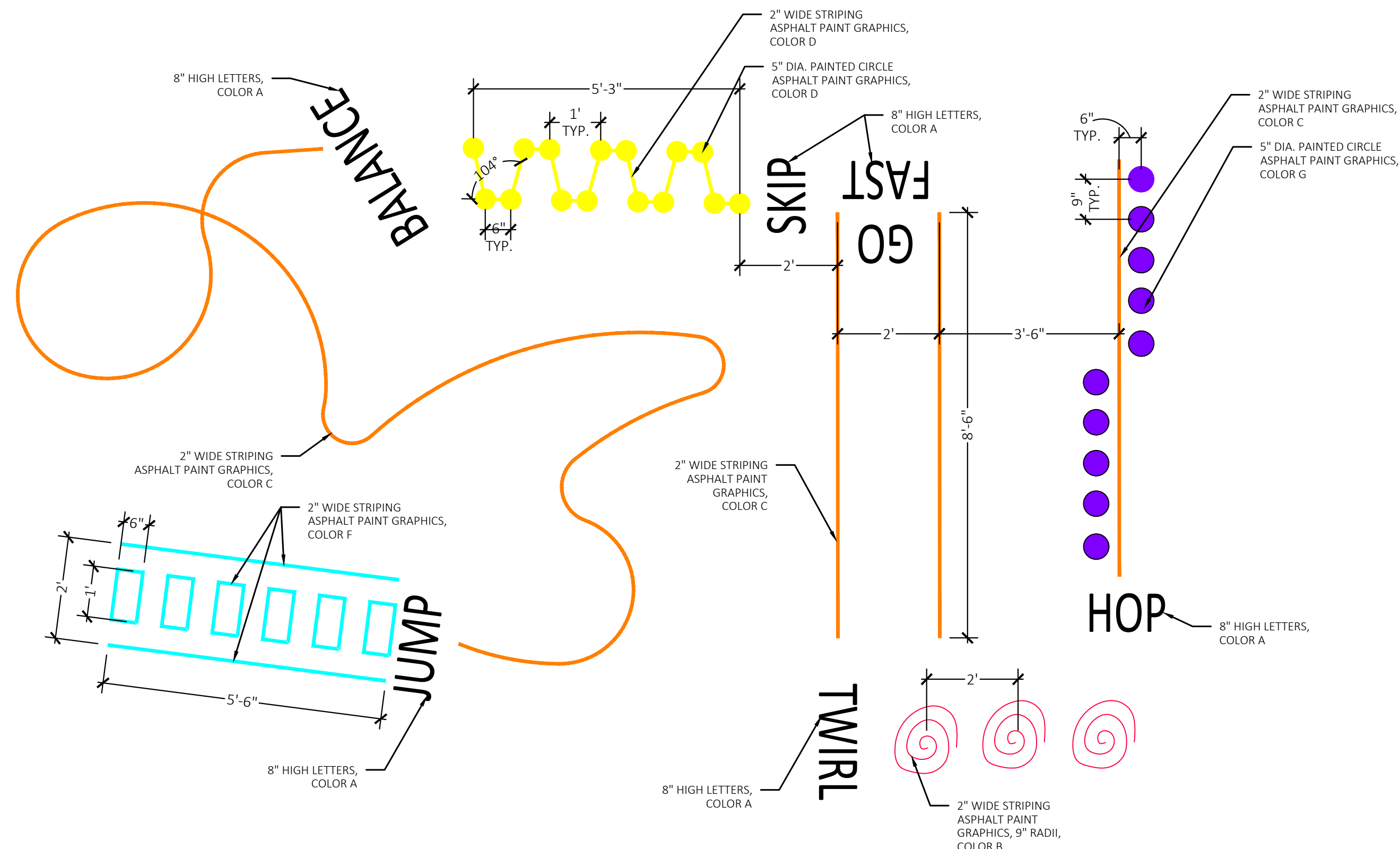
PROPOSED FEATURES LEGEND:

SYMBOL	DESCRIPTION	KEY	DESCRIPTION	DETAIL
	RESILIENT SURFACING (BY OTHERS)	A	STRAIGHT FACE CONCRETE CURB	6/C4.0
	LOOSE FILL SAFETY SURFACING (BY OTHERS)	B	THICKENED EDGE CONCRETE	11/C4.0
	SYNTHETIC TURF (BY OTHERS)	C	RESILIENT SURFACING (BY OTHERS)	7/C4.0
	PLAY SAND	D	LOOSE FILL SAFETY SURFACING (BY OTHERS)	3 & 9/C4.0
	PLAY HILL, REFER TO CIVIL DRAWINGS	E	PLASTIC PLAY EDGING (BY OTHERS)	12, 13, & 18/C4.0
	PLASTIC PLAY EDGING, BY OTHERS REFER TO PLAYGROUND CONTRACTOR'S DRAWINGS AND SPECS	F	PLASTIC PLAY EDGING (BY OTHERS)	4, 5, & 8/C4.0
	THICKENED EDGE CONCRETE	G	CONCRETE WALK	2/C4.0
	INTEGRAL WALK AND CURB	H	PLAY AREA ENTRANCE RAMP	16/C4.0
	BARRIER-FREE PLAY AREA ENTRANCE RAMP	I	CONCRETE SAND BOX	15/C4.0
	CHAIN LINK FENCE, REFER TO CIVIL PLANS	J	N/A	
	ENLARGEMENT LIMIT LINE	K	N/A	
		L	N/A	
		M	N/A	
		N	N/A	
		P	N/A	

SYMBOL	DESCRIPTION	DETAIL
	COMMUNICATION BOARD, PURCHASED BY OWNER, INSTALLED BY SITE CONTRACTOR	SEE SPECS.



2 Basketball Lane Layout
NOT TO SCALE



3 Silly Track Layout
Not to Scale

LAYOUT NOTES:

1. SURVEY OF EXISTING CONDITIONS PROVIDED BY PEA GROUP, 1849 POND RUN, AUBURN HILLS, MICHIGAN 48326, (248)689-9090.
2. PAVEMENT DIMENSIONS AND RADI ARE TO EDGE OF PAVEMENT OR BACK OF CURB. PLASTIC EDGING MEASURED TO/ FROM CENTER OF PIN.
3. DISCREPANCIES BETWEEN SITE AND PLANS SHOULD BE REPORTED TO THE PROJECT MANAGER IMMEDIATELY.
4. VERIFY LOCATIONS OF ALL BELOW GRADE UTILITIES PRIOR TO BEGINNING WORK. 72 HOURS BEFORE YOU DIG CALL "MISS DIG" AT 1-800-482-7171.
5. PROVIDE BARRIER FREE PARKING SIGNS FOR ALL BARRIER FREE PARKING SPACES. ALL SIGNS TO COMPLY WITH THE MDOOT MICHIGAN MANUAL OF UNIFORM TRAFFIC CONTROL DEVICES.
6. SITE LAYOUT POINTS SHOULD BE ESTABLISHED AND PROTECTED FOR FUTURE SITE WORK.

BARRIER-FREE NOTES

- BARRIER-FREE PARKING AND ACCESSIBLE ROUTE(S) MUST COMPLY WITH THE AMERICANS WITH DISABILITIES ACT AND MICHIGAN BARRIER-FREE CODE REQUIREMENTS, INCLUDING BUT NOT LIMITED TO THE FOLLOWING:
- 1:50 (2%) MAXIMUM CROSS-SLOPE ON ACCESSIBLE ROUTE.
 - NO CHANGES IN LEVEL GREATER THAN 1/2" ALONG ACCESSIBLE ROUTE.
 - 1:20 (5%) MAXIMUM LONGITUDINAL SLOPE ON ACCESSIBLE ROUTE (EXCEPT WHERE RAMPS ARE PROVIDED).
 - 1:50 (2%) MAXIMUM SLOPE (IN ANY DIRECTION) IN B.F. PARKING AND ACCESS AISLES.

NOTE: PLAYGROUND EQUIPMENT AND SURFACING PURCHASE AND INSTALLATION IS UNDER SEPARATE CONTRACT AND IS NOT INCLUDED IN THIS BID PACKAGE. CONTRACTOR IS REQUIRED TO COORDINATE INSTALLATION OF PLAYGROUND EQUIPMENT AND SURFACING WITH PLAYGROUND INSTALLER PRIOR TO ANY EXCAVATION AND CONCRETE CURBING OR PAVING INSTALLATION.

NOTE: VERIFY LOCATION OF NEW PLAYGROUND EQUIPMENT PRIOR TO INSTALLATION OF ANY CONCRETE CURB. CONCRETE CURB TO BE INSTALLED OUTSIDE OF FALL SAFETY ZONE OF EACH PIECE OF EQUIPMENT PER ASTM 1487-05 AND MANUFACTURER'S WRITTEN RECOMMENDATIONS.

CONTRACTOR COORDINATION NOTES:

- SITE CONTRACTOR AND PLAYGROUND CONTRACTOR ARE REQUIRED TO COORDINATE BOTH WITH EACH OTHER AND WITH CONSTRUCTION MANAGER. THE INSTALLATION PROCESS FOR THE PLAYGROUND SAFETY SURFACING SHOULD BE AS FOLLOWS:
- * SITE CONTRACTOR TO EXCAVATE AREA AS SHOWN ON CONSTRUCTION DOCUMENTS.
 - * SITE CONTRACTOR TO INSTALL UNDERDRAINS AS SHOWN ON CONSTRUCTION DOCUMENTS. SITE CONTRACTOR TO USE LAYOUT SERVICES FROM CADD FILES FOR INSTALLATION TO ENSURE THAT THE UNDERDRAINS ARE INSTALLED IN THE CORRECT LOCATIONS.
 - * THE PLAYGROUND CONTRACTOR WILL THEN INSTALL THE POSTS AND FOOTINGS FOR ALL EQUIPMENT.
 - * THE SITE CONTRACTOR WILL THEN INSTALL THE DRAINAGE AGGREGATE, TAKING CARE TO NOT DAMAGE THE POSTS OR POWDERCOATING OF THE PLAY EQUIPMENT. THE SITE CONTRACTOR WILL ALSO INSTALL THE ADDITIONAL ENGINEERED FILL FOR THE RESILIENT SURFACING AREAS. THE SITE CONTRACTOR MUST COORDINATE THE DEPTHS WITH THE PLAYGROUND CONTRACTOR PRIOR TO INSTALLATION AS THE DEPTHS VARY BETWEEN PLAYGROUND CONTRACTORS.
 - * THE PLAYGROUND CONTRACTOR WILL INSTALL THE GEOTEXTILE FABRIC, PLAYGROUND EQUIPMENT, AND SAFETY SURFACING.



TMP ARCHITECTURE INC
1191 WEST SQUARE LAKE ROAD
BLOOMFIELD HILLS • MICHIGAN • 48302
PH • 248.338.4561 FX • 248.338.0223
EM • INFO@TMP-ARCHITECTURE.COM

REGISTRATION SEAL



141 E. Michigan Avenue, Suite 500
Kalamazoo Michigan 49007
Phone (269) 381-3357
Fax (269) 381-2944

Landscape Architecture
Urban Planning
Parks & Recreation
Campus & Institutional Planning
Camp Planning & Design

PROJECT TITLE
**Leonard
Elementary School
Playground Remodel
Bld Package No.01B**

**Troy School District
Troy, Michigan**

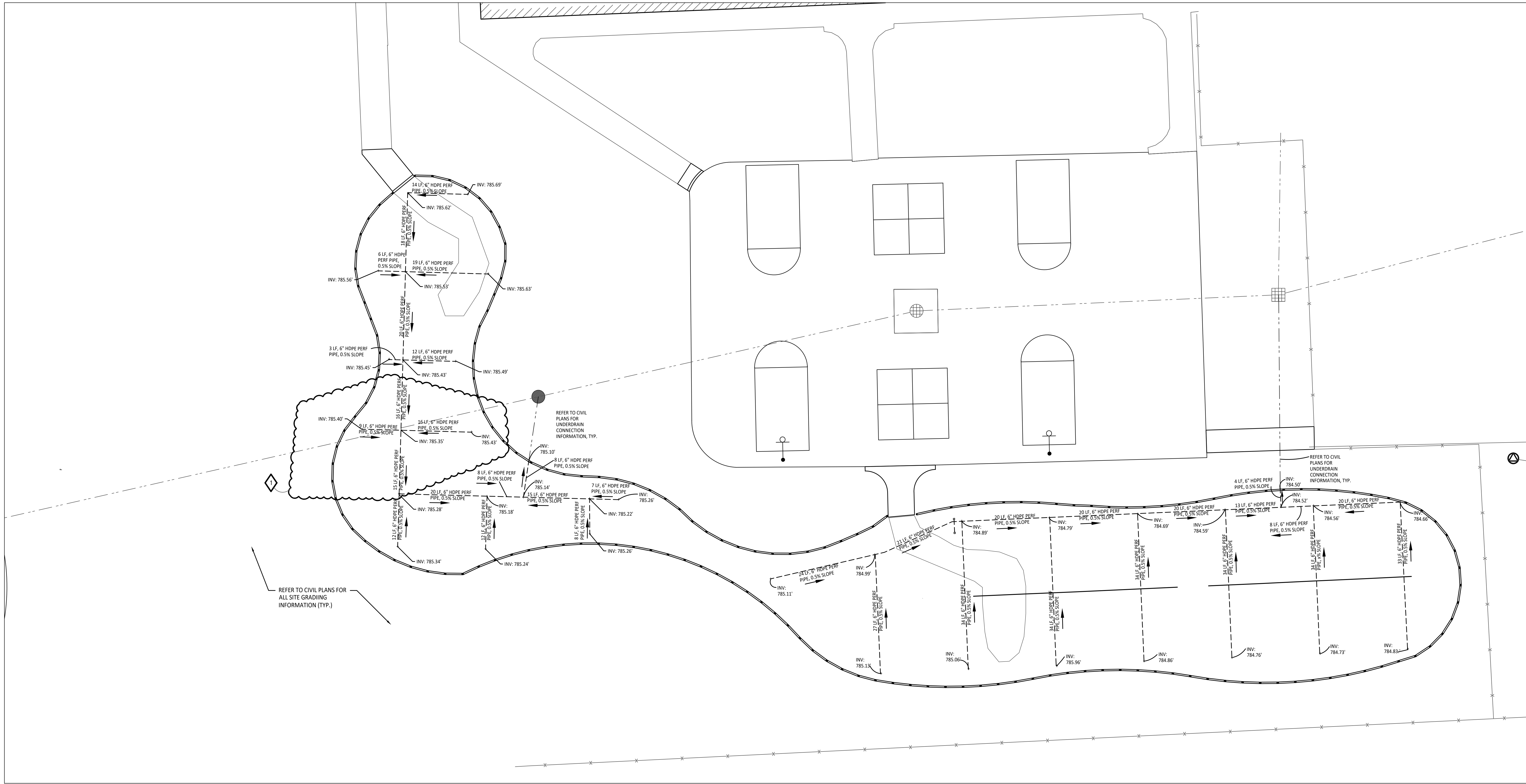
DRAWING TITLE
**Overall Playground
Layout Plan**

ISSUE DATES

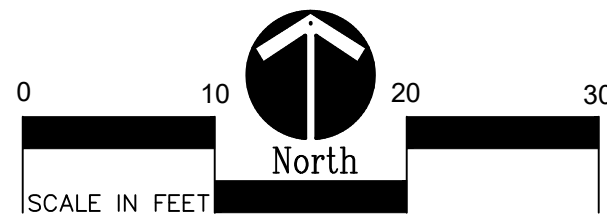
10-22-2024	ADDENDUM #1
10-03-2024	CONSTRUCTION DOCUMENTS
DATE	ISSUED FOR:
DRAWN	DID
CHECKED	DID
APPROVED	DID

PROJECT NO.
22091B

DRAWING NO.
C2.0



1 Playground Drainage Enlargement Plan - Upper Elementary Play Area
1" = 10'-0"



CONTRACTOR COORDINATION NOTES:

SITE CONTRACTOR AND PLAYGROUND CONTRACTOR ARE REQUIRED TO COORDINATE BOTH WITH EACH OTHER AND WITH CONSTRUCTION MANAGER. THE INSTALLATION PROCESS FOR THE PLAYGROUND SAFETY SURFACING SHOULD BE AS FOLLOWS:

- * SITE CONTRACTOR TO EXCAVATE AREA AS SHOWN ON CONSTRUCTION DOCUMENTS.
- * SITE CONTRACTOR TO INSTALL UNDERDRAINS AS SHOWN ON CONSTRUCTION DOCUMENTS. SITE CONTRACTOR TO USE LAYOUT SERVICES FROM CADD FILES FOR INSTALLATION TO ENSURE THAT THE UNDERDRAINS ARE INSTALLED IN THE CORRECT LOCATIONS.
- * THE PLAYGROUND CONTRACTOR WILL THEN INSTALL THE POSTS AND FOOTINGS FOR ALL EQUIPMENT.
- * THE SITE CONTRACTOR WILL THEN INSTALL THE DRAINAGE AGGREGATE, TAKING CARE TO NOT DAMAGE THE POSTS OR POWDERCOATING OF THE PLAY EQUIPMENT. THE SITE CONTRACTOR WILL ALSO INSTALL THE ADDITIONAL ENGINEERED FILL FOR THE RESILIENT SURFACING AREAS. THE SITE CONTRACTOR MUST COORDINATE THE DEPTHS WITH THE PLAYGROUND CONTRACTOR PRIOR TO INSTALLATION AS THE DEPTHS VARY BETWEEN PLAYGROUND CONTRACTORS.
- * THE PLAYGROUND CONTRACTOR WILL INSTALL THE GEOTEXTILE FABRIC, PLAYGROUND EQUIPMENT, AND SAFETY SURFACING.

GENERAL EARTHWORK NOTE:

CUTS AND FILLS AT THIS SITE MAY OR MAY NOT BALANCE. IT IS THE CONTRACTOR'S RESPONSIBILITY TO VERIFY THE REQUIRED EARTHWORK VOLUMES BASED ON THE GRADING PLAN SHOWN. IF FILL IS REQUIRED, THE CONTRACTOR SHALL INCLUDE THE REQUIRED VOLUME OF IMPORTED CLASS II SAND IN THE BASE BID PROPOSAL. IF EXCESS SOILS NEED TO BE SPOILED, THE CONTRACTOR SHALL INCLUDE HAULING AND SPOILING SOILS OFF SITE IN THE BASE BID PROPOSAL. NO CONTRACT COST ADJUSTMENTS WILL BE CONSIDERED FOR EARTHWORK REQUIRED TO BALANCE THE SITE.

BARRIER-FREE NOTES

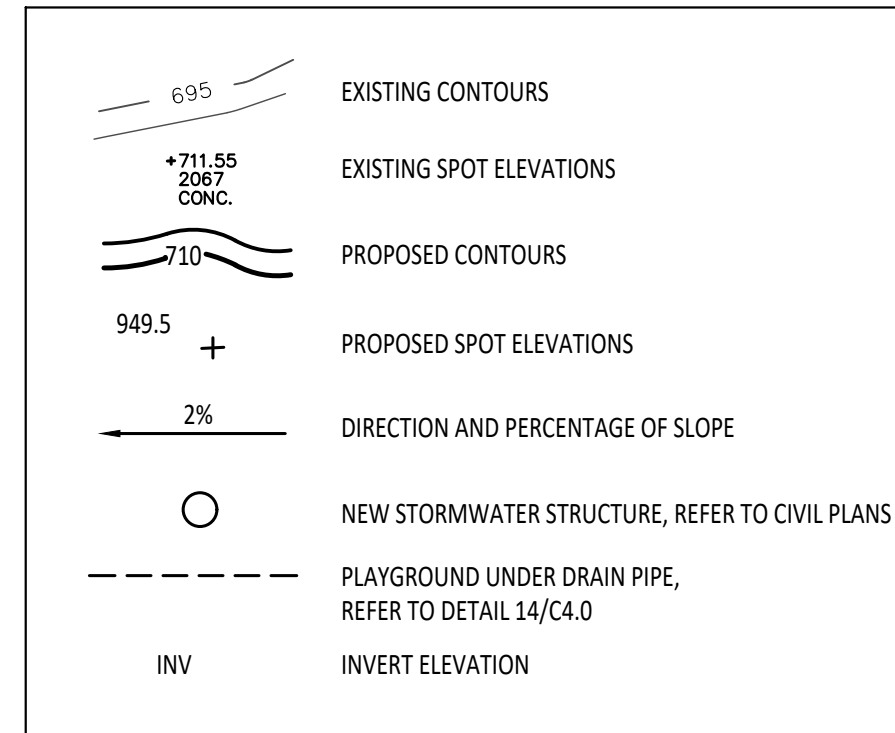
BARRIER-FREE PARKING AND ACCESSIBLE ROUTE(S) MUST COMPLY WITH THE AMERICANS WITH DISABILITIES ACT AND MICHIGAN BARRIER-FREE CODE REQUIREMENTS, INCLUDING BUT NOT LIMITED TO THE FOLLOWING:

- 1:50 (2%) MAXIMUM CROSS-SLOPE ON ACCESSIBLE ROUTE.
- NO CHANGES IN LEVEL GREATER THAN 1/2" ALONG ACCESSIBLE ROUTE.
- 1:20 (5%) MAXIMUM LONGITUDINAL SLOPE ON ACCESSIBLE ROUTE (EXCEPT WHERE RAMPS ARE PROVIDED).
- 1:50 (2%) MAXIMUM SLOPE (IN ANY DIRECTION) IN B.F. PARKING AND ACCESS AISLES.

GRADING NOTES:

1. SURVEY OF EXISTING CONDITIONS PROVIDED BY PEA GROUP, 1849 POND RUN, AUBURN HILLS, MICHIGAN, 48326, (248)689-9090.
2. VERIFY LOCATIONS OF ALL BELOW GRADE UTILITIES PRIOR TO BEGINNING WORK. 72 HOURS BEFORE YOU DIG CALL "MISS DIG" AT 1-800-482-7171.
3. ALL NEW PAVEMENTS AND TURF AREAS ARE INTENDED TO DRAIN FREELY WITH NO PONDING. IF THIS CANNOT BE ACHIEVED USING THE PROPOSED GRADES, NOTIFY THE OWNER'S REPRESENTATIVE IMMEDIATELY FOR RESOLUTION.
4. ALL NEW PAVEMENT ELEVATIONS AT EXTERIOR DOORS SHALL MATCH EXISTING FINISH FLOOR ELEVATIONS, TYPICAL.
5. ADJUST TOP OF EXISTING MANHOLES, CATCH BASINS, VAULT COVERS, ETC. TO NEW FINISH GRADE AS REQUIRED.
6. SEE SITE CIVIL PLANS FOR ALL ADDITIONAL SITE UTILITY DEMOLITION AND CONSTRUCTION.
7. ALL TOPSOIL AND EXCESS FILL MATERIAL SHALL BE STOCKPILED ON SITE SEPARATELY FOR LATER RE-USE. LOCATE STOCKPILES IN AREAS AS DIRECTED BY CONSTRUCTION MANAGER AND PROTECT FROM EFFECTS OF EROSION.

PROPOSED FEATURES LEGEND:



TMP ARCHITECTURE INC
1191 WEST SQUARE LAKE ROAD
BLOOMFIELD HILLS • MICHIGAN • 48302
PH • 248.338.4561 FX • 248.338.0023
EM • INFO@TMP-ARCHITECTURE.COM

REGISTRATION SEAL

CONSULTANT



141 E. Michigan Avenue, Suite 500
Kalamazoo Michigan 49007
Phone (269) 381-3357
Fax (269) 381-2944

Landscape Architecture
Urban Planning
Parks & Recreation
Campus & Institutional Planning
Camp Planning & Design

PROJECT TITLE

Schroeder
Elementary School
Playground Remodel
Bld Package No.01B

Troy School District
Troy, Michigan

DRAWING TITLE

Playground Drainage
Enlargement Plan

ISSUE DATES

10-22-2024	ADDENDUM #1
10-03-2024	CONSTRUCTION DOCUMENTS

DATE: ISSUED FOR:

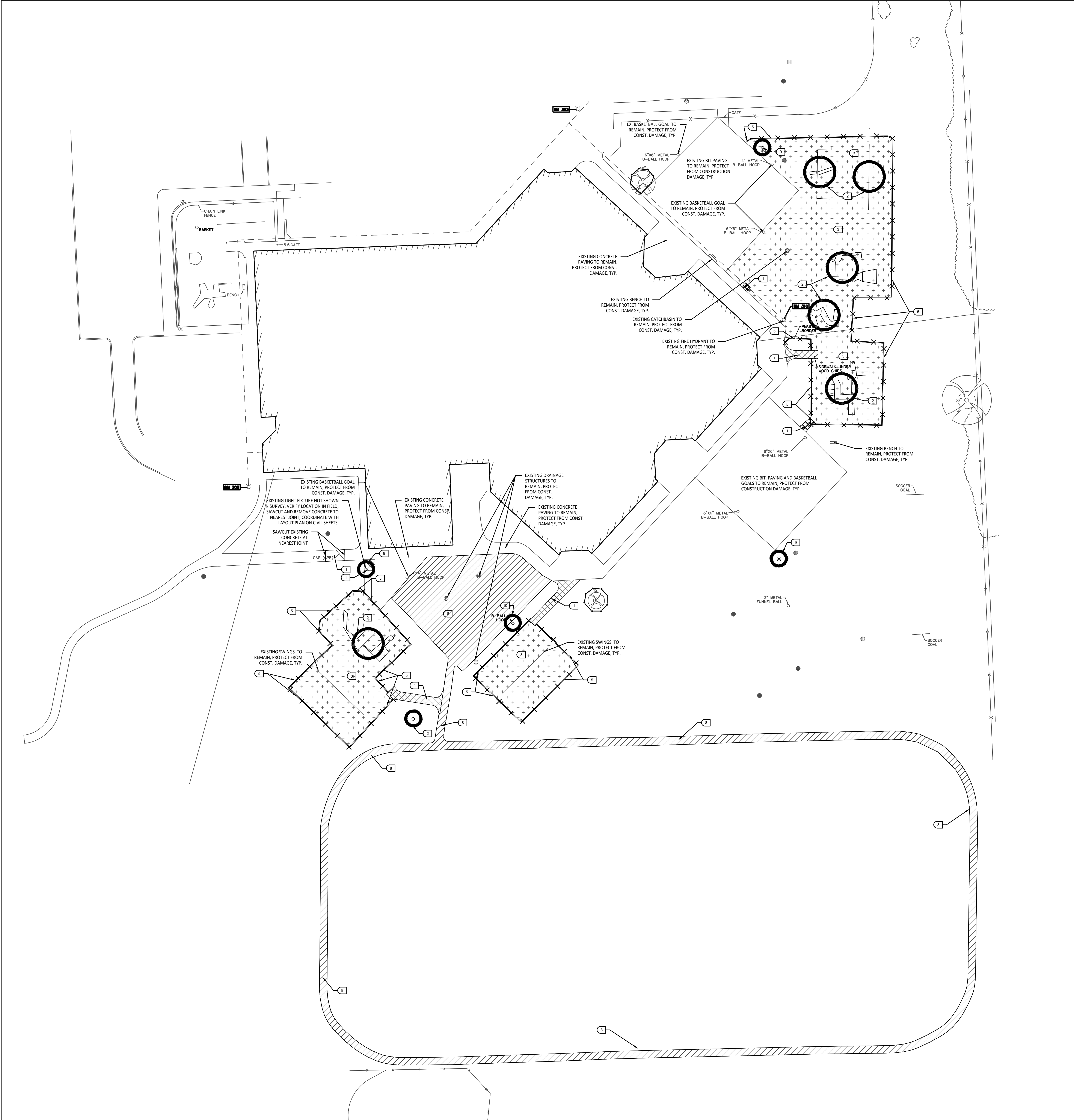
DRAWN	DID
CHECKED	DID
APPROVED	DID

PROJECT NO.

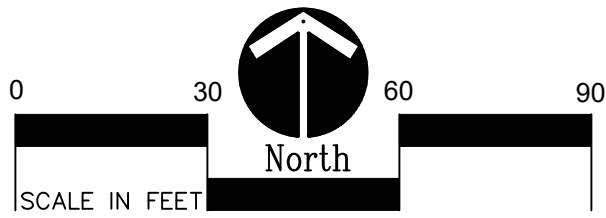
22094B

DRAWING NO.

C3.2



1 Overall Demolition Plan
SCALE: 1" = 30'-0"



SITE DEMOLITION KEY

- 1 SAWCUT AND REMOVE EXISTING CONCRETE PAVING INCLUDING SUB-BASE.
- 2 REMOVE EXISTING PLAY EQUIPMENT INCLUDING ALL CONCRETE FOOTINGS. DESTROY ALL PLAY EQUIPMENT COMPLETELY SO THAT IT CANNOT BE RE-ASSEMBLED.
- 3 REMOVE EXISTING PLAY SAFETY SURFACING, INCLUDING DRAINAGE AGGREGATE.
- 4 PLAYGROUND CONTRACTOR TO SALVAGE EXISTING PLAY EQUIPMENT AND RE-INSTALL ON-SITE.
- 5 REMOVE EXISTING PLAY EDGING COMPLETELY.
- 6 N/A
- 7 N/A
- 8 SAWCUT AND REMOVE EXISTING BITUMINOUS PAVEMENT INCLUDING SUB-BASE.
- 9 OWNER TO DISCONNECT POWER AND REMOVE LIGHT HEAD. SITE CONTRACTOR TO CUT WIRE AT A MINIMUM OF 24" BELOW FINISHED GRADE AND REMOVE LIGHT POLE AND CONCRETE BASE COMPLETELY.
- 10 SALVAGE EXISTING PLAY EQUIPMENT, PLAYGROUND CONTRACTOR TO REINSTALL ON SITE.
- 11 SALVAGE EXISTING SITE FURNISHINGS AND REINSTALL AT LOCATION TO BE DETERMINED.
- 12 N/A

DEMOLITION NOTES:

1. SURVEY OF EXISTING CONDITIONS PROVIDED BY PEA GROUP, 1849 POND RUN, AUBURN HILLS, MI, 48326. 248-689-9090.
2. VERIFY LOCATIONS OF ALL BELOW GRADE UTILITIES PRIOR TO BEGINNING WORK. 72 HOURS BEFORE YOU DIG CALL "MISS DIG" AT 1-800-482-7171.
3. PROTECT ALL TREES & EXISTING FEATURES TO REMAIN AS SPECIFIED.
4. REFER TO LAYOUT PLAN FOR LIMITS OF WORK.
5. DISCREPANCIES BETWEEN SITE AND PLANS SHOULD BE REPORTED TO THE PROJECT MANAGER IMMEDIATELY.
6. ALL TOPSOIL AND EXCESS FILL MATERIAL SHALL BE STOCKPILED ON SITE SEPARATELY FOR LATER RE-USE. LOCATE STOCKPILES IN AREAS AS DIRECTED BY CONSTRUCTION MANAGER AND PROTECT FROM EFFECTS OF EROSION.
7. ALL PAVEMENT DEMOLITION TO BE SAWCUT AND REMOVED COMPLETELY, INCLUDING BASE/SUBBASE MATERIALS.
8. ALL EXISTING PLAYGROUND EQUIPMENT TO BE REMOVED **MUST BE DESTROYED COMPLETELY** SO THAT IT CANNOT BE RE-ASSEMBLED. THE CONTRACTOR IS NOT ALLOWED TO RE-USE, DONATE, OR SELL ANY EXISTING PLAYGROUND EQUIPMENT SCHEDULED TO BE DEMOLISHED.
9. IN LOCATIONS WHERE PROPOSED PAVING WILL BE INSTALLED WHERE EXISTING PAVING WAS REMOVED, THE BASE MATERIAL MAY BE LEFT IN PLACE PROVIDED IT IS TESTED TO BE ADEQUATE IN BOTH DEPTH AND GRADATION. IF EITHER OF THESE IS INADEQUATE, THE BASE MATERIAL SHOULD BE REMOVED AND REPLACED.

DEMOLITION LEGEND:

- SAWCUT AND REMOVE BITUMINOUS PAVEMENT AND BASE
- SAWCUT AND REMOVE CONCRETE PAVEMENT, INCLUDING SUBBASE
- REMOVE PLAY SAFETY SURFACING INCLUDING DRAINAGE AGGREGATE
- NO WORK, PARKING OR STORAGE IN THIS SHADED AREA
- REMOVE TREE
- REMOVE EXISTING FENCE
- SAWCUT & REMOVE CONCRETE CURB & GUTTER
- REMOVE MISCELLANEOUS FEATURE AS NOTED
- RELOCATE EXISTING SITE LIGHTING PER ELEC. PLAN
- TEMPORARY TREE PROTECTION FENCE, REFER TO DETAIL 1/C4.0

TREE PROTECTION NOTES:

- PROVIDE AND MAINTAIN TEMPORARY TREE PROTECTION FENCING IN ALL LOCATIONS MARKED TO ANY WORK ON SITE (INCLUDING TOPSOIL STRIPPING OPERATIONS). REFER TO THE FOLLOWING NOTES AND THE SPECIFICATIONS FOR TREE PROTECTION REQUIREMENTS.
1. NO CONSTRUCTION OPERATIONS, EQUIPMENT, MATERIALS OR TOPSOIL SHALL BE ALLOWED WITHIN THE TREE PROTECTION AREAS.
 2. EXISTING GROUND COVER AND TOPSOIL SHALL NOT BE REMOVED FROM TREE PROTECTION AREAS DURING EARTHWORK PHASE.
 3. VEHICULAR TRAFFIC, PARKING, EQUIPMENT OR MATERIAL STORAGE MAY NOT OCCUR WITHIN THE TREE PROTECTION AREAS AT ANY TIME.
 4. NO EXCAVATION SHALL BE MADE WITHIN THE TREE PROTECTION AREAS EXCEPT AS NOTED OTHERWISE.



TMP ARCHITECTURE INC
1191 WEST SQUARE LAKE ROAD
BLOOMFIELD HILLS - MICHIGAN - 48302
PH - 248.338.4561 FX - 248.338.0203
EM - INFO@TMPARCHITECTURE.COM

REGISTRATION SEAL

CONSULTANT



141 E. Michigan Avenue, Suite 500
Kalamazoo Michigan 49007
Phone (269) 381-3357
Fax (269) 381-2944

Landscape Architecture
Urban Planning
Parks & Recreation
Campus & Institutional Planning
Camp Planning & Design

PROJECT TITLE

**Wass
Elementary School
Playground Remodel
Bld Package No.01B**

**Troy School District
Troy, Michigan**

**DRAWING TITLE
Demolition Plan**

ISSUE DATES

-	-
-	-
-	-
-	-
-	-
-	-
-	-
-	-
-	-
-	-
10-22-2024	ADDENDUM #1
10-03-2024	CONSTRUCTION DOCUMENTS

DATE: **ISSUED FOR:**

DRAWN: DID

CHECKED: DID

APPROVED: DID

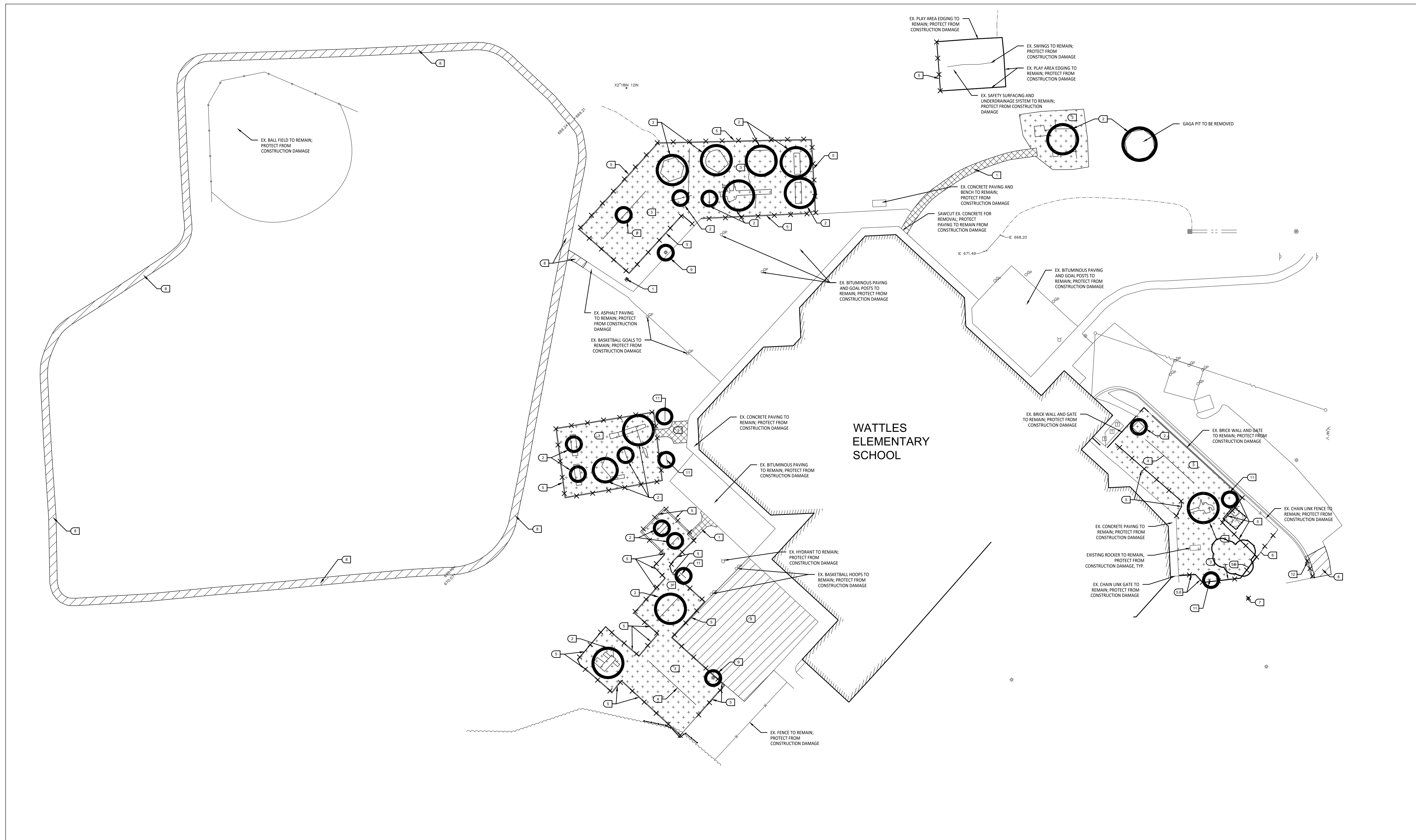
PROJECT NO.

22096B

DRAWING NO.

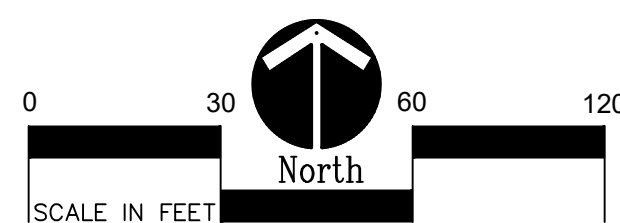
C1.0

10-22-2024	ADDENDUM #1
10-03-2024	CONSTRUCTION DOCUMENTS
DATE:	ISSUED FOR:
DRAWN	DID
CHECKED	DID
APPROVED	DID



1 Overall Demolition Plan

Scale: 1" = 30'-0"



DEMOLITION NOTES:

1. SURVEY OF EXISTING CONDITIONS PROVIDED BY PEA GROUP, 1849 POND RUN, AUBURN HILLS, MI, 48326. 248-689-9090.
2. VERIFY LOCATIONS OF ALL BELOW GRADE UTILITIES PRIOR TO BEGINNING WORK. 72 HOURS BEFORE YOU DIG CALL "MISS DIG" AT 1-800-482-7171.
3. PROTECT ALL TREES & EXISTING FEATURES TO REMAIN AS SPECIFIED.
4. REFER TO LAYOUT PLAN FOR LIMITS OF WORK.
5. DISCREPANCIES BETWEEN SITE AND PLANS SHOULD BE REPORTED TO THE PROJECT MANAGER IMMEDIATELY.
6. ALL TOPSOIL AND EXCESS FILL MATERIAL SHALL BE STOCKPILED ON SITE SEPARATELY FOR LATER RE-USE. LOCATE STOCKPILES IN AREAS AS DIRECTED BY CONSTRUCTION MANAGER AND PROTECT FROM EFFECTS OF EROSION.
7. ALL PAVEMENT DEMOLITION TO BE SAWCUT AND REMOVED COMPLETELY, INCLUDING BASE/SUBBASE MATERIALS.
8. ALL EXISTING PLAYGROUND EQUIPMENT TO BE REMOVED **MUST BE DESTROYED COMPLETELY** SO THAT IT CANNOT BE RE-ASSEMBLED. THE CONTRACTOR IS NOT ALLOWED TO RE-USE, DONATE, OR SELL ANY EXISTING PLAYGROUND EQUIPMENT SCHEDULED TO BE DEMOLISHED.
9. IN LOCATIONS WHERE PROPOSED PAVING WILL BE INSTALLED WHERE EXISTING PAVING WAS REMOVED, THE BASE MATERIAL MAY BE LEFT IN PLACE PROVIDED IT IS TESTED TO BE ADEQUATE IN BOTH DEPTH AND GRADATION. IF EITHER OF THESE IS INADEQUATE, THE BASE MATERIAL SHOULD BE REMOVED AND REPLACED.

TREE PROTECTION NOTES:

- PROVIDE AND MAINTAIN TEMPORARY TREE PROTECTION FENCING IN ALL LOCATIONS MARKED WITH TREE FENCING SHALL BE PROVIDED AND IN PLACE PRIOR TO ANY WORK ON SITE (INCLUDING TOPSOIL STRIPPING OPERATIONS). REFER TO THE FOLLOWING NOTES AND THE SPECIFICATIONS FOR TREE PROTECTION REQUIREMENTS.
1. NO CONSTRUCTION OPERATIONS, EQUIPMENT, MATERIALS OR TOPSOIL SHALL BE ALLOWED WITHIN THE TREE PROTECTION AREAS.
 2. EXISTING GROUND COVER AND TOPSOIL SHALL NOT BE REMOVED FROM TREE PROTECTION AREAS DURING EARTHWORK PHASE.
 3. VEHICULAR TRAFFIC, PARKING, EQUIPMENT OR MATERIAL STORAGE MAY NOT OCCUR WITHIN THE TREE PROTECTION AREAS AT ANY TIME.
 4. NO EXCAVATION SHALL BE MADE WITHIN THE TREE PROTECTION AREAS EXCEPT AS NOTED OTHERWISE.

SITE DEMOLITION KEY

1. SAWCUT AND REMOVE EXISTING CONCRETE PAVING INCLUDING SUB-BASE.
2. REMOVE EXISTING PLAY EQUIPMENT INCLUDING ALL CONCRETE FOOTINGS. **DESTROY ALL PLAY EQUIPMENT COMPLETELY** SO THAT IT CANNOT BE RE-ASSEMBLED.
3. REMOVE EXISTING PLAY SAFETY SURFACING, INCLUDING DRAINAGE AGGREGATE.
4. PLAYGROUND CONTRACTOR TO SALVAGE EXISTING PLAY EQUIPMENT AND RE-INSTALL ON-SITE.
5. REMOVE EXISTING PLAY EDGING COMPLETELY.
6. REMOVE EXISTING FENCING COMPLETELY (INCLUDING FOUNDATIONS).
7. REMOVE EXISTING TREE INCLUDING ALL ROOT SYSTEMS.
8. SAWCUT AND REMOVE EXISTING BITUMINOUS PAVEMENT INCLUDING SUB-BASE.
9. OWNER TO DISCONNECT POWER AND REMOVE HEAD. SITE CONTRACTOR TO CUT WIRE AT A MINIMUM OF 24" BELOW FINISHED GRADE AND REMOVE LIGHT POLE AND CONCRETE BASE COMPLETELY.
10. SALVAGE EXISTING PLAY EQUIPMENT, PLAYGROUND CONTRACTOR TO REINSTALL ON SITE.
11. SALVAGE EXISTING SITE FURNISHINGS AND REINSTALL AT LOCATION TO BE DETERMINED.
12. SAWCUT AND REMOVE EXISTING CURB AND GUTTER.

DEMOLITION LEGEND:

