

Nibley Park School

2024-25



Please scan QR code for attendance



Welcome to our Riley Parent Meeting Kickoff the 2023-2024 School Year

Thank you for taking the time to stay for our parent meeting. We know your time is valuable. If you have questions regarding any of the information presented, please don't hesitate to ask!



Keslie Green



Joie Ellis

The Vision for Nibley Park

Every Student Matters

Every Moment Counts

We Are Winners!

Information for Families about Title I

Title I was initially passed in 1965 under the Elementary and Secondary Education Act (ESEA). It is the largest federal assistance program for our nation's schools. These supplemental funds provide students the opportunity to receive a fair, equitable, and high-quality education, and help to close educational achievement gaps.

TITLE I FUNDS

Funds are distributed to schools based on the number of students eligible for free/ reduced lunch.

Funds must supplement, not supplant, district funds.

One percent of a school's total Title I budget is for parental/family engagement activities.

School Improvement Plan

- Our school creates a plan each year to use Title I funds and other supplemental funds wisely.
- We review data from testing, attendance and tardies, and student/family feedback surveys
- We use the data to set goals and align funding, materials, and instruction to state and district academic standards.
- Families are encouraged to participate with the school in creating the plan for improvement each year.
- The School Report Card and School Improvement Plan for our school can be found on our webpage

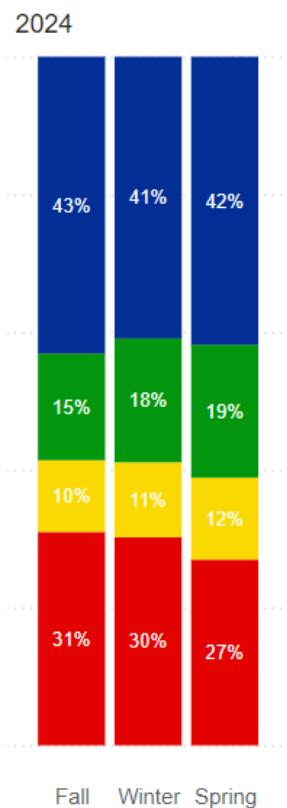
Parent/Guardian Rights in Title I Schools

- You have the right to participate in creating the School Improvement Plan, the School-Parent/Family Compact, and the Family Engagement Policy
- You have the right to know the qualifications of your child's teachers including notice of assignment to a teacher who does not meet state certification or licensure
- You have the right to be informed about curriculum, assessments and testing, and the level of achievement and academic growth of your student
- You have the right to participate in decisions about the education of your child

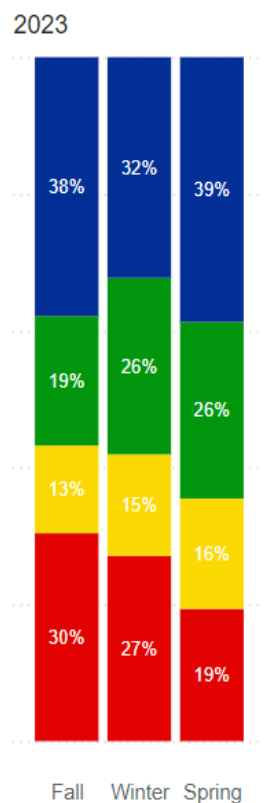
Data Analysis is Required for Title I Programs

- Schools analyze many different data sources:
 - RISE
 - ACADIENCE
- Schools use the data to set goals and align curricula to state and district academic standards.
- Schools adjust instructional practices, professional development, and activities to reach goals based on the findings of the assessment data.

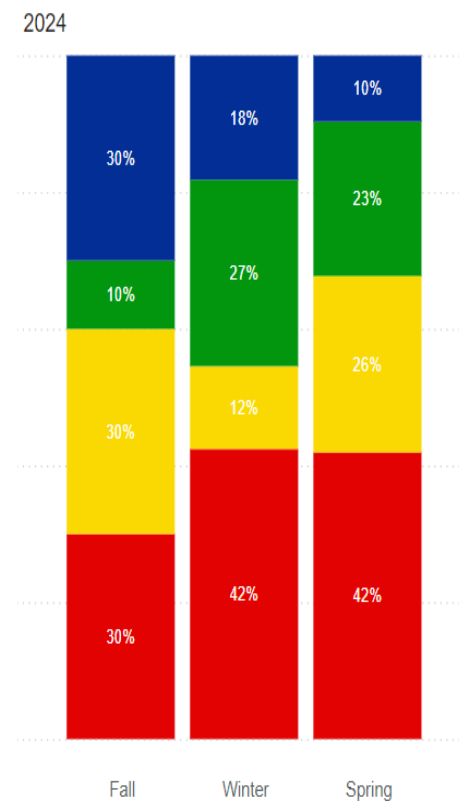
Nibley Park's Acadience data compared to the district



Salt Lake City School District 2024

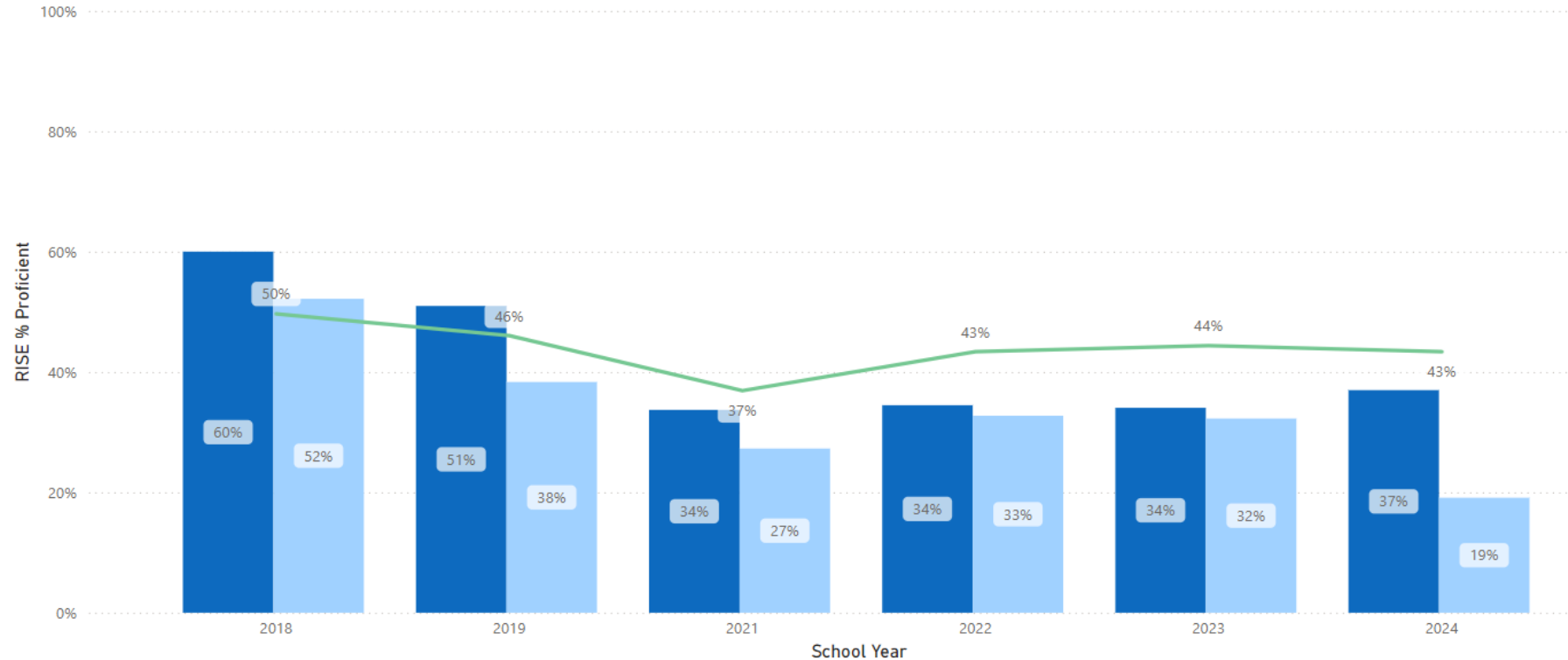


Nibley Park School 2023



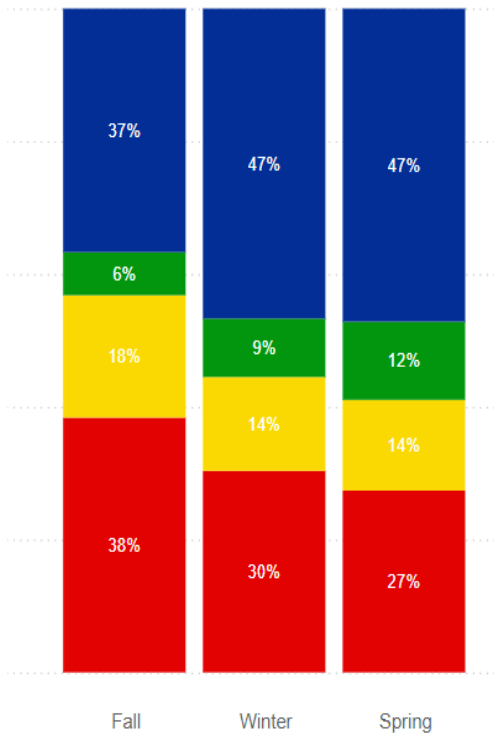
Nibley Park School 2024

Nibley Park's ELA RISE data compared to the district



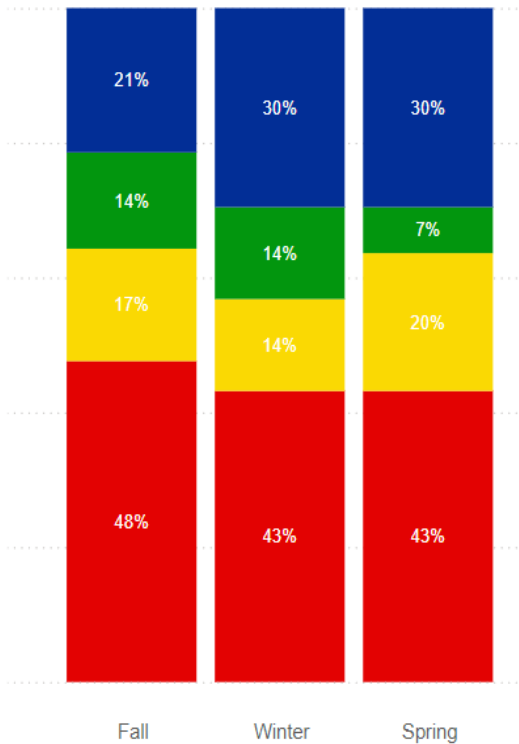
Nibley Park's Acadience Math data compared to the district

2024



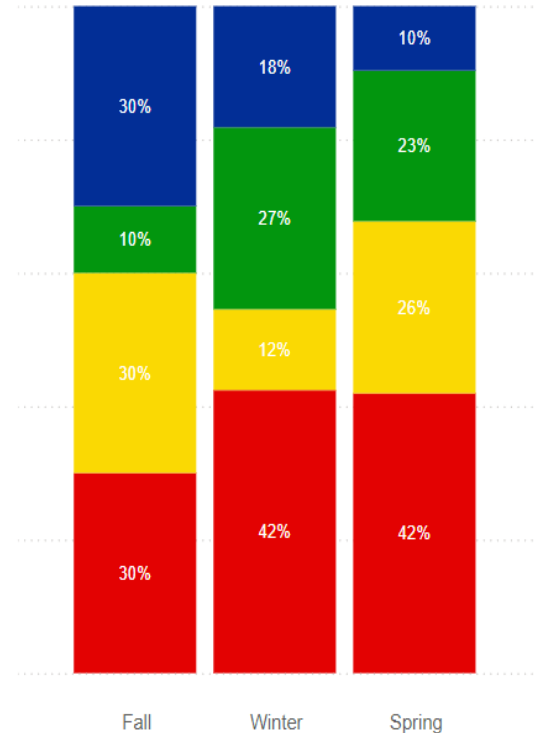
Salt Lake City School District 2024

2023



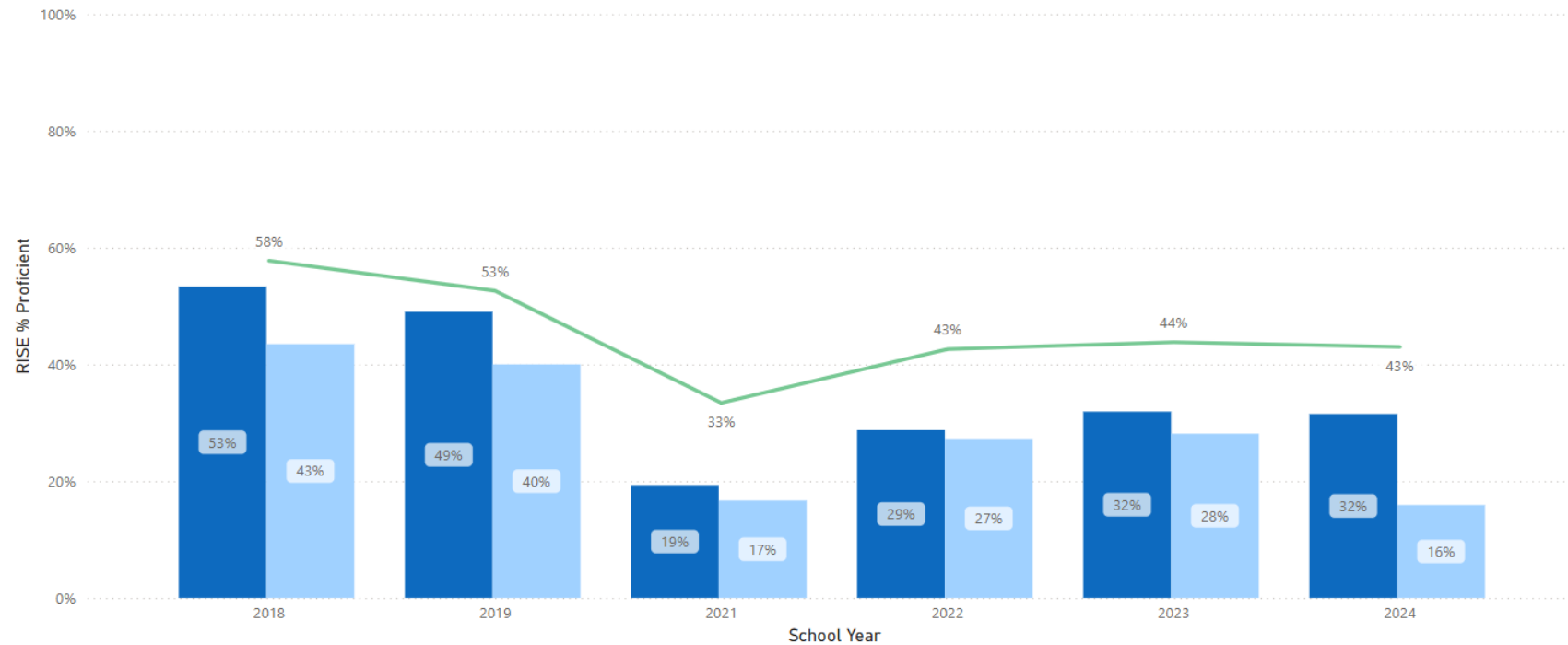
Nibley Park School 2023

2024

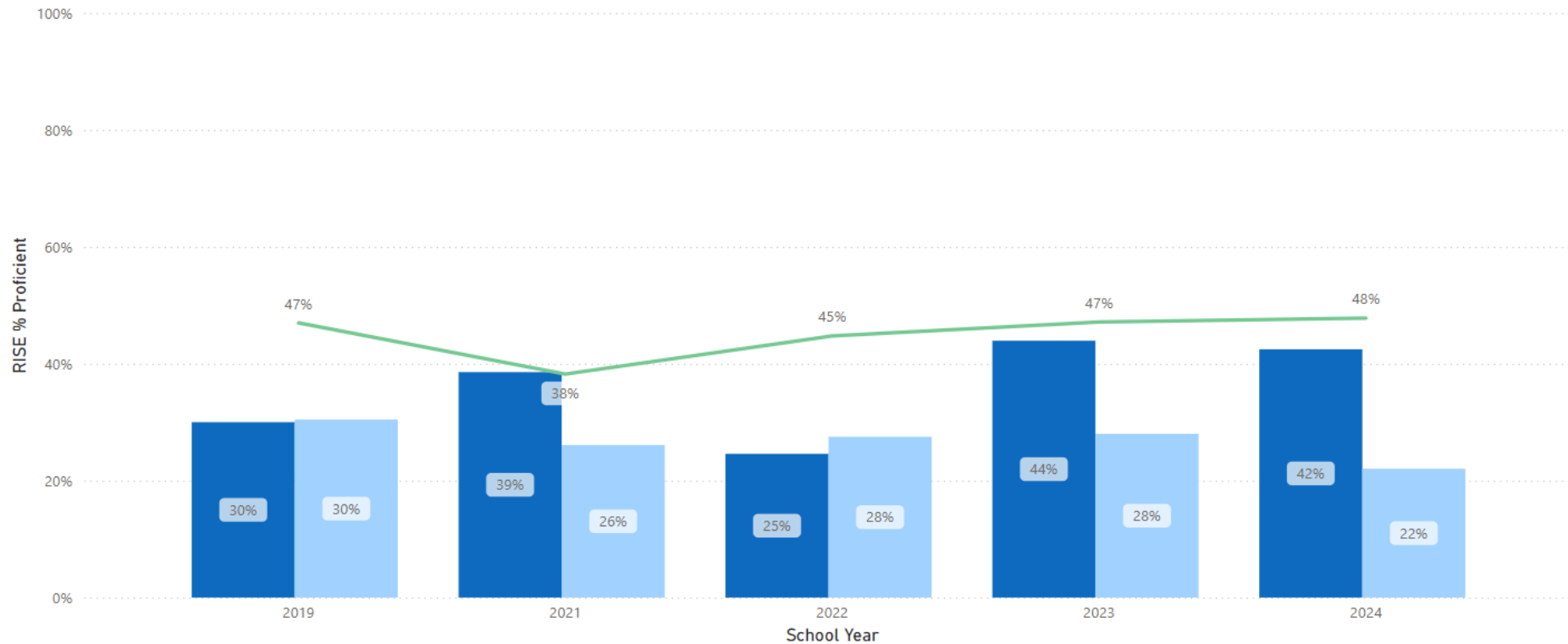


Nibley Park School 2024

Nibley Park's Math RISE data compared to the district



Nibley Park's Science RISE data compared to the district



Plan for Student Achievement

- Using the Data Analysis, the school develops a yearlong plan that is organized into goals, actionable steps, and budget needs.
- It is in this plan that the school determines how best to use its Title I Funds.

Parent Engagement Policy

- Every Title I school, in collaboration with parents, must prepare a site-level parent engagement policy.

- The Parent Engagement Policy describes how the school will involve the parents in an organized, ongoing, and timely way in the planning, review, and improvement of the Title I program at the school.

School/Parent Compact

The School/Parent Compact describes the responsibilities of the school, the parent, and the student for improved student achievement;

- Developed in collaboration among parents, teachers, and students;
- Updated periodically;
- Distributed with school Title I Parent Engagement Policy.

Nibley Park School (K-8) STUDENT/PARENT/SCHOOL COMPACT 2024 -2025

School Hours:

8:00 A.M. – 2:30 P.M. (Monday- Thursday)
8:00 A.M. – 1:00 P.M. (Friday and Short Days)

Back to school night will be held on
August 15th 4:30 – 8:30

At Nibley Park, we feel that it is essential for us to have a partnership for educational success between school and home. Together, we will provide a quality education for our students and daily reinforce the importance of excellence in all that our students do to achieve at the highest academic and social levels. This document describes the responsibilities of the student, parent, and school. Working together, we will teach and motivate our students to be successful leaders in local and global communities.

Student's Responsibilities

Students agree to promote the importance of education and have a positive attitude about school and learning. Students agree to:

- Arrive on time prepared to work and participate in the daily lessons.
- Be at school every day, except for illness.
- Stay on task, listen, follow instructions, and do quality work.
- Complete assignments and turn in homework on time.
- Follow our "Dolphin Expectations" (Dolphins are Safe, Respectful, and Responsible) that are posted throughout the school.
- Live the Community of Caring Values (Respect, Responsibility, Caring, Trust, and Family) and be responsible citizens.
- Keep phones out of sight. They should not be used during school hours. This includes lunch. The only exception is that permission is given by a teacher or an administrator.

Student Signature

Parent Responsibilities to Students

Parents agree to promote the importance of education and provide a home environment that will nurture and encourage each child to have a positive attitude about school. The success of the student depends on active, continuous parent involvement. The parent agrees to:

- Ensure your child is on time to school and attends daily. If your child is ill, contact the front office or send a note.
- Schedule medical/dental appointments before or after school.
- Become an active partner with the school, share ideas, ask questions, volunteer, and help.
- Provide a positive learning environment with a study time and place at home.

Parent & Family Engagement

- A school committee provides parents with an opportunity to be involved in the academic program of the school.
- This committee develops, monitors and evaluates the Schoolwide Plan to implement programs and services that support students.

Nibley Park School

Parent and Family Engagement Policy

Partnering with students and their families is essential. We value and honor the role of parents and other family members in their children's educational experience. The following engagement policy, developed jointly with parents, outlines our efforts to support this partnership between school and home. This policy will be updated periodically to meet the changing needs of parents and the school.

Communication of Information

Nibley Park School will provide meaningful communication with parents about student progress via email, phone, written notes, Power School, media apps, and in-person at our SEP (Student Education Plan) conferences. This information, along with other parent notifications and this written policy, will be provided in a format that parents can understand and will be available in multiple languages to support our diverse community.

Parents' Rights and Opportunities for Involvement

Parents have the right to provide input on school engagement practices and to be active participants and decision-makers in their children's educational experiences. They can participate in school-wide initiatives through the Parent Teacher Association (PTA), serve on our School Community Council, volunteer at the school, receive information about school programs, and have their questions answered in a timely manner.

Enhancing and Improving Parent Involvement

Annually, parents will provide input on this policy and contribute to the development of a School Compact that outlines the roles of teachers, students, and parents in achieving academic success. Parents will also be involved in writing and reviewing the School Improvement Plan (SIP) and the school's LAND Trust plans through the School Community Council. The practices outlined in this document are supported by building the capacity of each group involved.


For parents, we will provide parent evenings to build their capacity to support their children academically. For teachers, we will offer professional development to assist them in providing effective instruction and parent outreach. For students, we will provide quality instruction and necessary interventions, aligning with the specific academic improvement needs of our school.

Addressing the Targeted Needs of Students and Their Families

Nibley Park School will provide timely feedback to students and parents on academic and behavioral performance. Through school behavior plans and systems of support, each student will be motivated to learn and try their best. Students will receive 45 minutes of targeted Social Emotional Learning each week. School-wide assessment data will be shared with parents on our website, in newsletters, and at School Community Council meetings. We set high expectations for students, working with parents and teachers to set individual learning goals during SEP conferences. Individual progress reports will be shared with parents at the end of each quarter. Teachers will recognize the needs of students and provide reasonable differentiation, scaffolds, and student extensions to meet individual needs. Nibley Park School consistently supports parents by updating PowerSchool regularly, communicating students' needs and supports being provided, and offering strategies for parents to support continued learning at home.

Accessibility for All Parents


ALL DAY. EVERY DAY.



WHEN DO ABSENCES BECOME A PROBLEM?

Too many excused or unexcused absences can keep students from succeeding in school and in life.

Tip: Check a box with each absence.



CHRONIC ABSENCE

11 12 13 14 15

11+ is excessive

WARNING SIGNS

6 7 8 9 10

6-10 is concerning

SATISFACTORY

1 2 3 4 5

5 and fewer is reasonable

Set an attendance goal for this year and track your attendance

Write Your Goal Here

Note: Based on a 180-day school year.

GOOD ATTENDANCE LEADS TO:



PRESCHOOLERS
Build skills and develop good habits for being on time



ELEMENTARY STUDENTS
Read well by the end of third grade



MIDDLE AND HIGH SCHOOLERS
Stay on track for graduation



COLLEGE STUDENTS
Earn their degrees



WORKERS
Earn more money in their jobs

WHAT YOU CAN DO:

- Strive for 8 hours of sleep at night.
- Set goals and keep track of attendance.
- Have a back up plan for transportation.
- Avoid scheduling trips and appointments during school time.
- Don't let your student stay home unless they are truly sick. Keep in mind that complaints of a stomachache or headache can sometimes be a sign of anxiety and not a reason to stay home.

Attendance



When a kid misses 2 days a month...



He will miss 20 days a year.



He will miss 30 hours of math and 60 hours of reading/writing over the school year.



He will miss over a year of school by graduation.

Parental Engagement Funds



Nibley Park School

School Board elected official



Kristi Swett

Precinct 7

phone: (801) 238-5587

email: kristi.swett@slcschools.org

Term ends: December 31, 2024