

# VALLECITOS ELEMENTARY NEW KITCHEN DOOR

**VALLECITOS SCHOOL DISTRICT**



**BOARD OF EDUCATION:**

Michael Damley, President  
Dr. Martin Kurland, Vice President  
Terese Kristensen, Trustee  
Chris Howells, Trustee

Meliton Sanchez, Superintendent



**ARCHITECT:**

MGPA ARCHITECTURE

**INDEX OF DRAWINGS** (TOTAL: 5 SHEETS)

**PROJECT ADDRESS**

**TITLE:**

T-1.0 TITLE SHEET

VALLECITOS ELEMENTARY SCHOOL  
5211 5TH STREET  
FALLBROOK, CA 92028

**ARCHITECTURAL:**

A-1.0 ENLARGED SITE PLAN  
A-1.1 DEMO AND NEW WORK PLAN

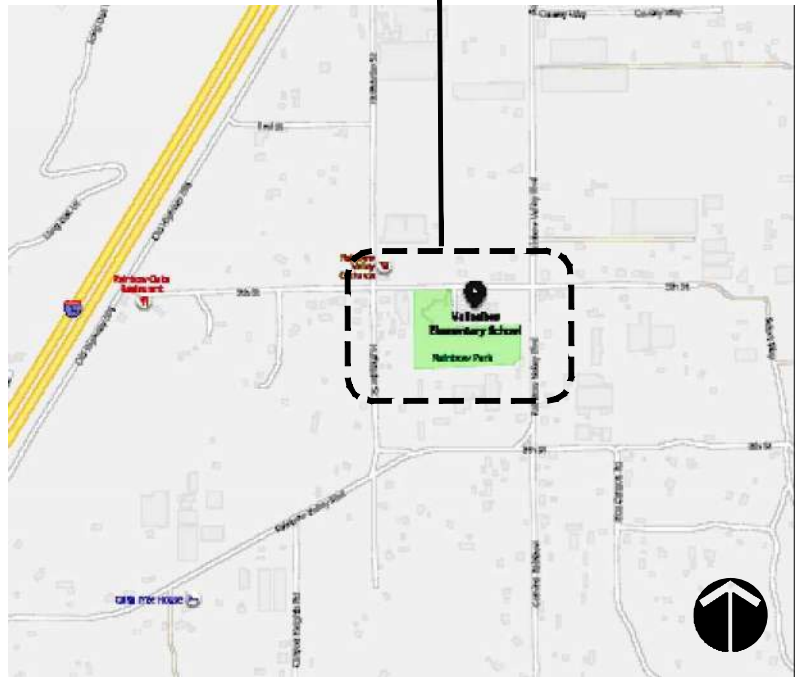
**STRUCTURAL:**

S-1 KITCHEN MULTI-PURPOSE-ROOM DOOR

**ELECTRICAL:**

E-1.1 NEW ELECTRICAL PLAN

**NOT TO SCALE**



KITCHEN DOOR

VALLECITOS  
ELEMENTARY SCHOOL

VALLECITOS  
SCHOOL DISTRICT



**MGPA ARCHITECTURE, INC**  
6965 El Camino Real, Suite 105-278  
Carlsbad, California 92009  
Tele: (760) 929-1500 Fax: (760) 929-1506



Sheet #:

T-1.0

Date:

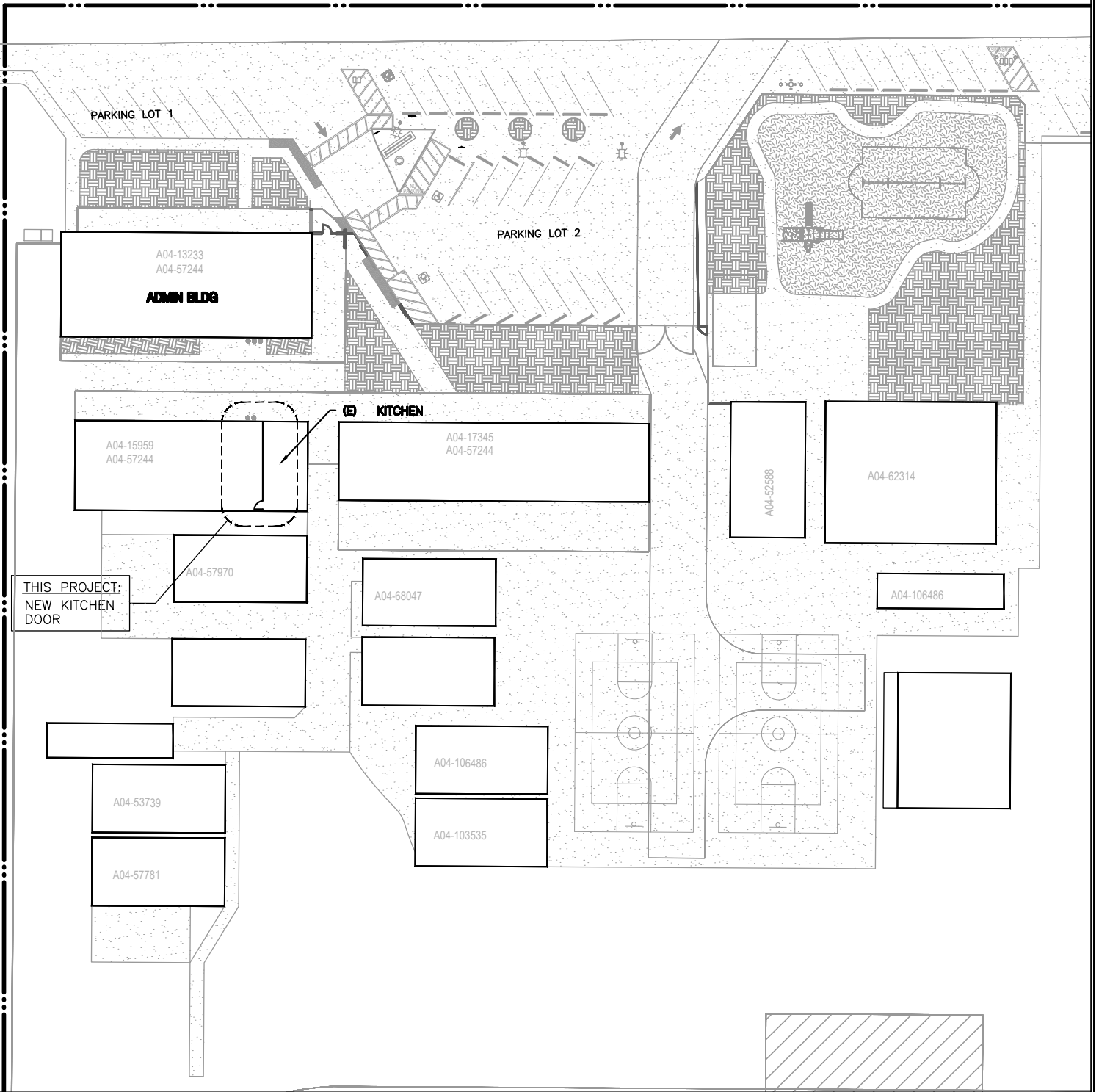
1/10/24

Job #:

VSVES7.00

DSA #:

5TH STREET



# SITE PLAN

SCALE: 1" = 50'-0"

KITCHEN DOOR

VALLECITOS  
ELEMENTARY SCHOOL

VALLECITOS  
SCHOOL DISTRICT



**MGPA ARCHITECTURE, INC**  
 6965 El Camino Real, Suite 105-278  
 Carlsbad, California 92009  
 Tele: (760) 929-1500 Fax: (760) 929-1506



Sheet #:

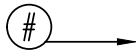
A-10

Date: 1/10/24

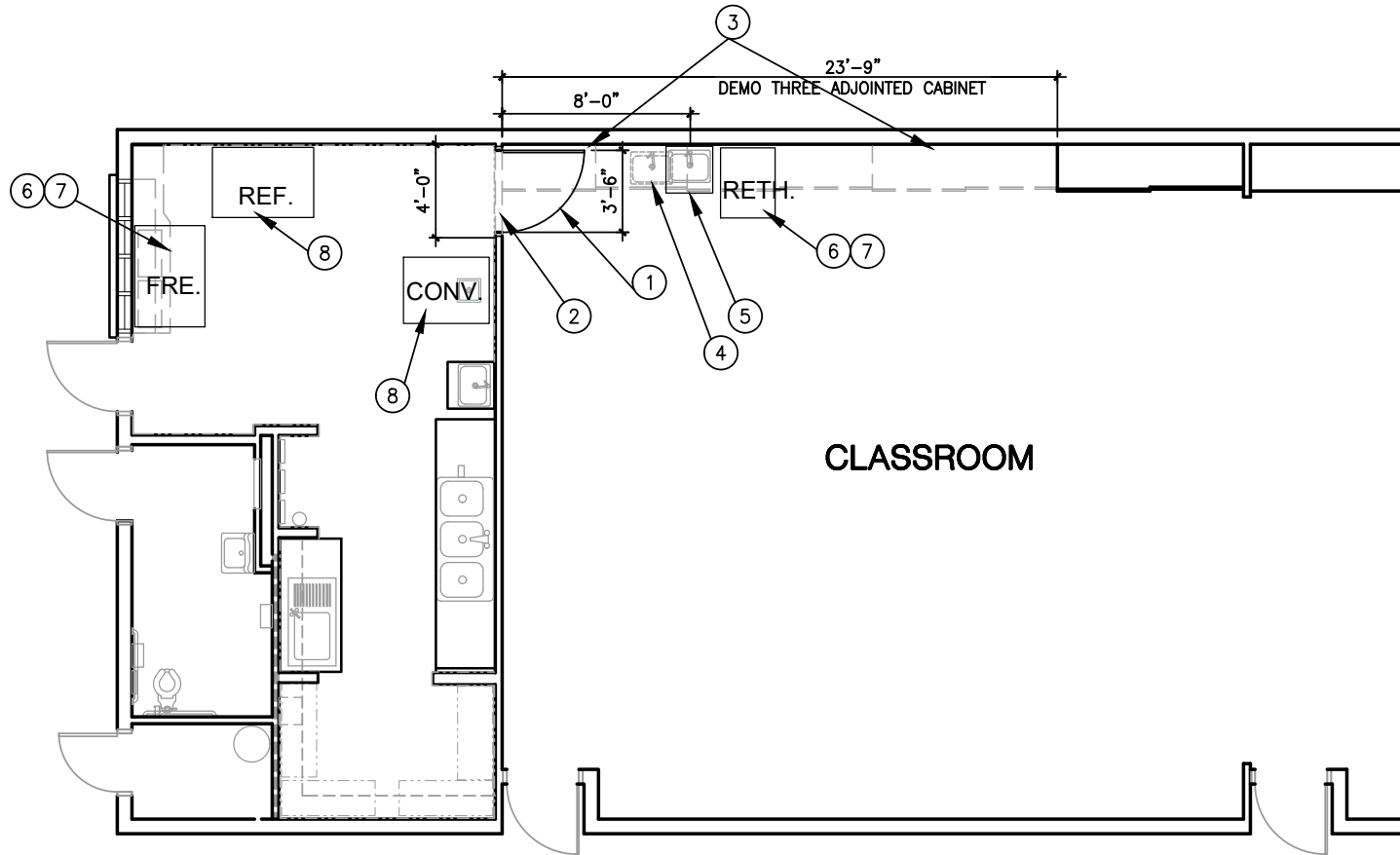
Job #: VSVES7.00

DSA #:

**KEYNOTES:**



1. (N) 3'-6" x 7'-2" DOOR AND DOOR FRAME PER PER STRUCTURAL WORK SHEET.
2. DEMO WALL FOR NEW DOOR OPENING.
3. DEMO CASEWORK AND REFINISH WALL PER DISTRICT DIRECTION. PROVIDE OUTLETS 4'-0" O.C. REFER TO ELECTRICAL WORK SHEET.
4. DEMO SINK AND EXTEND PLUMBING TO NEW SINK LOCATION.
5. NEW ACCESSIBLE SINK PER SHEET DET-1.
6. RELOCATE INDICATED KITCHEN APPLIANCES TO NEW LOCATIONS AS SHOWN ON PLAN.
7. PROVIDE POWER TO NEW LOCATION OF FREEZER AND PORTABLE REETHERM CABINET PER ELECTRICAL.
8. EXISTING APPLIANCE TO REMAIN, PROTECT IN PLACE.



**DEMO AND NEW WORK PLAN**

SCALE: 1/8" = 1'-0"

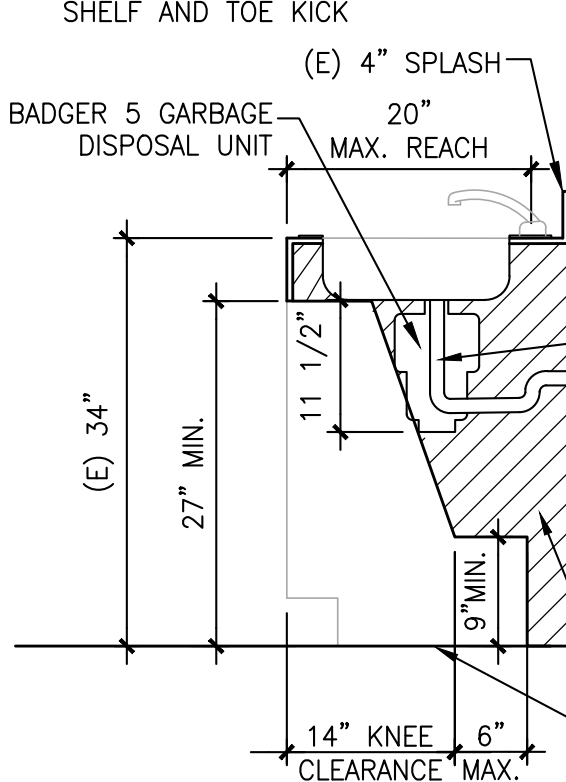
KITCHEN/MULTI-PURPOSE ROOM DOOR  
 VALLECITOS ELEMENTARY SCHOOL  
 VALLECITOS SCHOOL DISTRICT



**MGPA ARCHITECTURE, INC**  
 6965 El Camino Real, Suite 105-278  
 Carlsbad, California 92009  
 Tele: (760) 929-1500 Fax: (760) 929-1506

Sheet #:	A-11
Date:	1/10/24
Job #:	VSVES7.00
DSA #:	N/A

WHERE BASE CABINET DOORS ARE SHOWN. OMIT BASE SHELF AND TOE KICK



FAUCET CONTROLS & OPENING MECHANISMS SHALL BE OPERABLE WITH ONE HAND & SHALL NOT REQUIRE TIGHT GRASPING, PINCHING OR TWISTING OF THE WRIST. THE FORCE REQUIRED TO ACTIVATE CONTROLS SHALL BE NO MORE THAN 5 LBS. LEVER OPERATED, PUSH TYPE & ELECTRONICALLY CONTROLLED MECHANISMS ARE ACCEPTABLE. SELF CLOSING VALVES ARE ALLOWED IF THE FAUCET REMAINS OPEN FOR AT LEAST TEN SECONDS.

HOT WATER & DRAIN PIPES ACCESSIBLE UNDER LAVATORIES SHALL BE INSULATED OR OTHERWISE COVERED. THERE SHALL BE NO SHARP OR ABRASIVE OBJECTS OR SURFACES UNDER LAVATORIES. INSULATION SHALL BE CLASS A, W/ FLAME SPREAD <25 AND SMOKE DEVELOPMENT <50

AREA NOT HATCHED BELOW COUNTER MUST BE ACCESSIBLE AND CLEAR.

EXTEND FLOORING AND RUBBER BASE UNDER D.P. SINK AREA

**NOTE:**

VERIFY IN FIELD THAT THE GARBAGE DISPOSAL UNIT AND ANY ASSOCIATED PLUMBING DOES NOT ENCROACH UPON THE ACCESSIBLE AREA BENEATH THE COUNTER, AS ILLUSTRATED. IF ENCROACHMENT OCCURS, RE-INSTALL THE GARBAGE DISPOSAL UNIT ACCORDINGLY

1

# ACCESSIBLE SINK

SCALE:

SCALE: 3/4" = 1'-0"

KITCHEN DOOR
VALLECITOS ELEMENTARY SCHOOL
VALLECITOS SCHOOL DISTRICT



**MGPA ARCHITECTURE, INC**  
 6965 El Camino Real, Suite 105-278  
 Carlsbad, California 92009  
 Tele: (760) 929-1500 Fax: (760) 929-1506

**MGPA ARCHITECTURE**

Sheet #:	DET-1
Date:	4/12/24
Job #:	VSVES7.00
DSA #:	N/A

NEW 2x4 AS NEEDED  
W/A34 EA.END

4'-0"  
PREFAB.  
MODULES

(E) 2x4 @ 16" O.C.

REMOVE  
(E) HORIZ. 2x4  
AS NEEDED

2 1/2"

KEEP (E) ANGLE  
AND ANCHOR

NEW DOOR OPENING

(E) 2x4 "JAMBS"  
AT EA PREFAB PANEL

REMOVE (E) SILL PLATE

**KITCHEN-MULTI-PURPOSE ROOM DOOR**

**VALLECITOS  
ELEMENTARY SCHOOL**

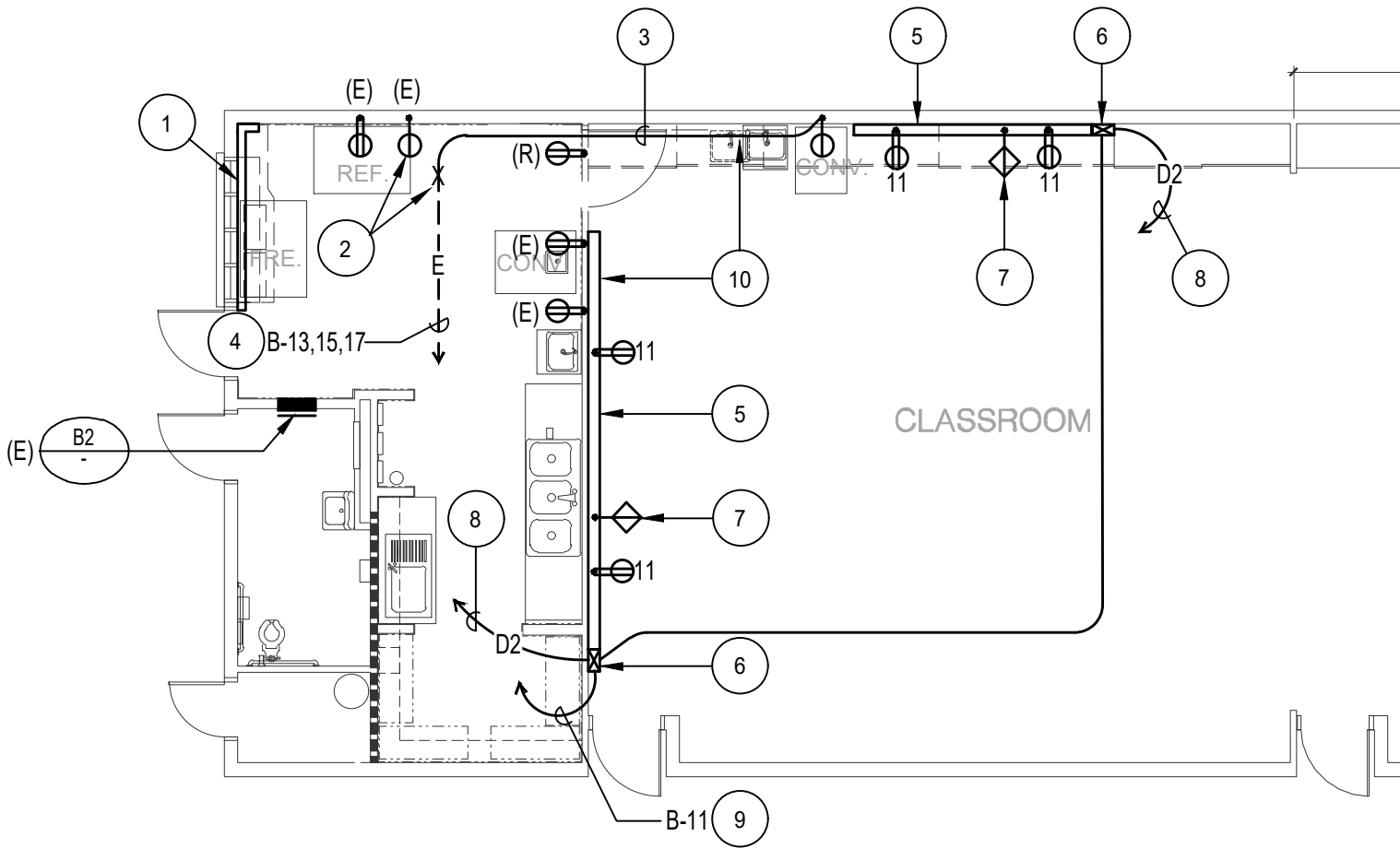


**ORION**

Structural Engineering, Inc.  
11305 RANCHO BERNARDO RD  
SUITE 121  
SAN DIEGO CA 92127  
PHONE (858) 679-1974  
FAX (858) 679 1975

VALLECITOS ELEMENTARY SCHOOL	
DATE	ISSUE
4-03-24	

FBA Engineering / Plot Date: 4/15/2024 10:38 AM / Plotted by: Josue Saldana / Drawing Location: I:\229178\E-1.1\_229178\_NEW ELECTRICAL PLAN.dwg



# NEW ELECTRICAL PLAN

SCALE: 1/8" = 1'-0"



**FBA Engineering**  
 Consulting Electrical Engineers  
 150 Paularino Avenue Suite A120  
 Costa Mesa, CA 92626  
 949.852.9995 • 949.852.1657 (fax)  
 fbaengr.com  
 FBA Job Number: 229.178

KITCHEN DOOR
VALLECITOS ELEMENTARY SCHOOL
VALLECITOS SCHOOL DISTRICT



**MGPA ARCHITECTURE, INC**  
 6965 El Camino Real, Suite 105-278  
 Carlsbad, California 92009  
 Tele: (760) 929-1500 Fax: (760) 929-1506

**MGPA ARCHITECTURE**

Sheet #:	E-11
Date:	4/12/24
Job #:	VSVES7.00
DSA #:	N/A

FBA Engineering / Plot Date: 4/15/2024 10:38 AM / Plotted by: Josue Saldana / Drawing Location: I:\229178\IE-1.2\_229178\_PLAN NOTES.dwg

- 1 EXISTING SURFACE MOUNTED POWER AND DATA RACEWAY SYSTEM SHALL REMAIN.
- 2 EXISTING FLUSH IN WALL RECEPTACLE OUTLET FOR THEMALIZER SHALL BE DISCONNECTED AND REMOVED. INTERCEPT EXISTING CONDUIT WITH BRANCH CIRCUIT CONDUCTORS CURRENTLY SERVING THE THEMALIZER AND EXTEND WITH NEW CONDUIT AND WIRING AS INDICATED TO SERVE THE RELOCATED EQUIPMENT. PROVIDE BLANK COVERPLATE OVER EXISTING OUTLET BOX.
- 3 PROVIDE 3 # 8, 1 # 10 GRD – 1" C.
- 4 EXISTING CONDUIT HOMERUN WITH 3 # 8, 1 # 10 GRD – 1" C. SHALL REMIAN AND BE REUSED AS INDICATED.
- 5 PROVIDE HORIZONTAL DUAL COMPARTMENT NON-METALLIC SURFACE MOUNTED RACEWAY SYSTEM AT +18" AFF FOR ROUTING OF NEW POWER AND DATA STSREM CONDUCTORS (WIREMOLD 5400-WH SERIER OR EQUAL), COMPLETE WITH DEVICE BOXES WITH 120V, 20A, DUPLEX RECEPTACLE DEVICES AND DATA CONNECTORS AT LOCATIONS INDICATED. PROVIDE TWO-COMPARTMENT BASE, TWIN SNAP COVERS, BLANK END FITTING, FLAT ELBOW, DEVICE BRACKETS, DUPLEX FACEPLATE, TWO (2) rj45 CONNECTOR FACEPLATE AND ALL ACCESSORIES FOR A COMPLETE INSTALLATION.
- 6 PROVIDE VERTICAL, DUAL COMPARTMENT, NON-METALLIC, SURFACE MOUNTED RACEWAY SYSTEM (WIREMOLD 5400-WH SERIES OF EQUAL) FOR CONNECTING AND EXTENDING THE HORIZONTAL RACEWAY SYSTEM UP WALL INTO CEILING SPACE. COMPLETE WITH COVERS, WIRE-CLIPS, CONDUIT ENTERANCE FITTING AND ALL ACCESSORIES FOR A COMPLETE INSTALLATION.
- 7 DEVICE BRACET AND COVERPLATE FOR TWO (2) DATA CONNECTORS MOUNTED IN RACEWAY SYSTEM.
- 8 PROVIDE 1" C. WITH TWO (2) CAT 6 DATA NETWORK CABLES AND EXTEND TO EXISTING IDF CABINET LOCATION FOR TERMINATION. VERIFY THE EXAACT LOCATION FOR THE IDF.
- 9 TERMINATE NEW CBRANCH POWER CIRCUIT CONDUCTORS AT SPARE 20A/1P CIRCUIT BREAKER IN PANEL AS INDICATED.
- 10 EXISTING POWER RACEWAY SYSTEM MOUNTED ALONG THE WALLS AND CABINET BASEBOARDS SHALL BE DISCONNECTED AND REMOVED INCLUDING REMOVAL OF BRANCH CIRCUIT CONDUCTORS BACK TO THEIR SOURCE.

# PLAN NOTES

SCALE: NTS



<b>FBA Engineering</b>
Consulting Electrical Engineers
150 Paularino Avenue Suite A120 Costa Mesa, CA 92626 949.852.9995 • 949.852.1657 (fax) fbaengr.com
FBA Job Number: 229.178

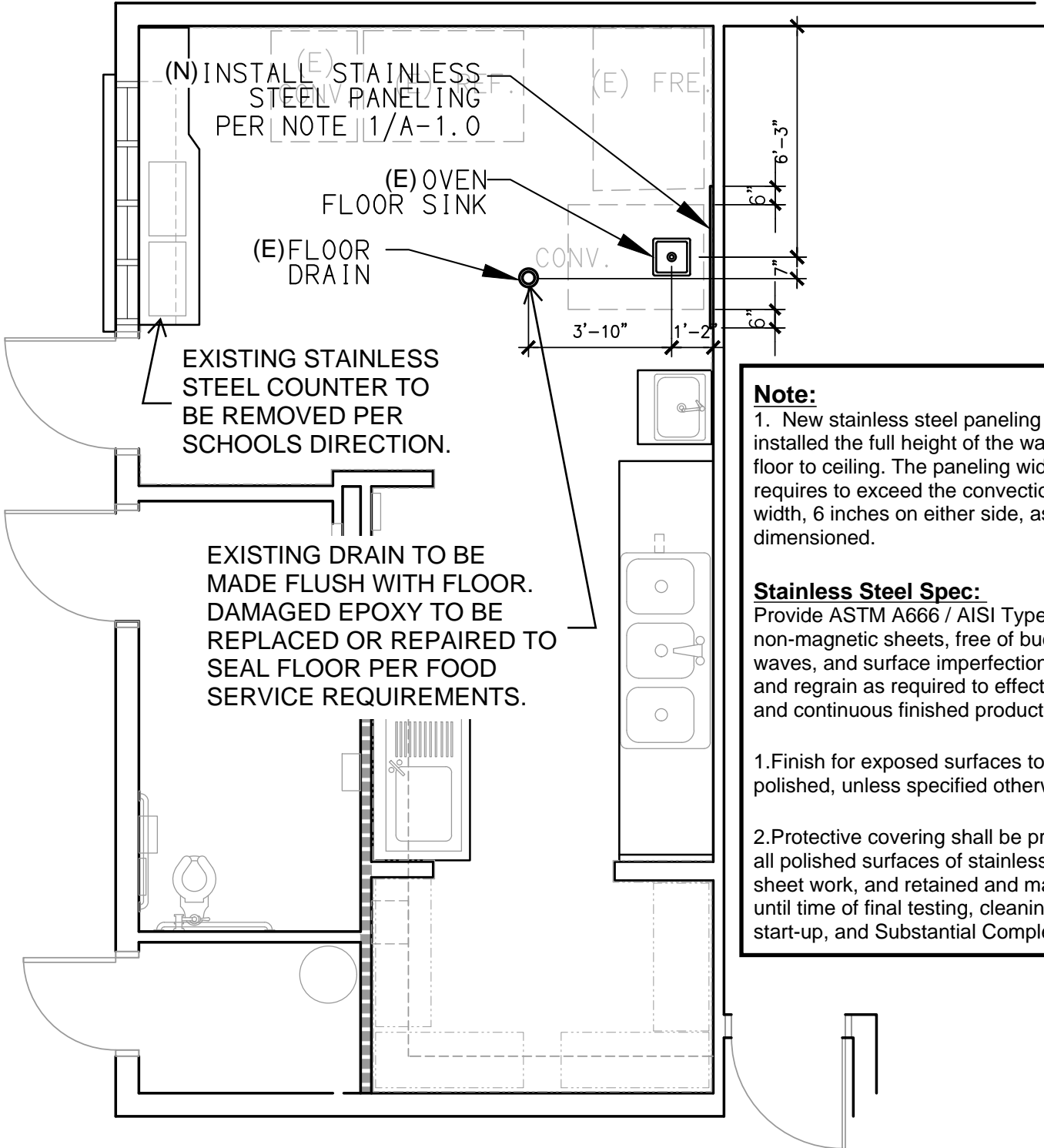
<b>KITCHEN DOOR</b>
<b>VALLECITOS ELEMENTARY SCHOOL</b>
<b>VALLECITOS SCHOOL DISTRICT</b>



<b>MGPA ARCHITECTURE INC</b> 6965 El Camino Real, Suite 105-278 Carlsbad, California 92009 Tele: (760) 929-1500 Fax: (760) 929-1506
<b>MGPA ARCHITECTURE</b>

Sheet #: <b>E-1.2</b>
Date: 4/12/24
Job #: <b>VSVES7.00</b>
DSA #: <b>N/A</b>

# ADDITIONAL WORK TO COMPLY WITH HEALTH DEPARTMENT REQUIREMENTS



**Note:**

1. New stainless steel paneling to be installed the full height of the wall, from floor to ceiling. The paneling width is requires to exceed the convection oven width, 6 inches on either side, as dimensioned.

**Stainless Steel Spec:**  
Provide ASTM A666 / AISI Type 304 non-magnetic sheets, free of buckles, waves, and surface imperfections; Blend and regrain as required to effect matching and continuous finished product.

1. Finish for exposed surfaces to be No. 4 polished, unless specified otherwise.
2. Protective covering shall be provided on all polished surfaces of stainless steel sheet work, and retained and maintained until time of final testing, cleaning, start-up, and Substantial Completion.

SCALE: 1/4" = 1'-0"

KITCHEN CONVECTION  
OVEN SINK AND DRAIN

VALLECITOS  
ELEMENTARY SCHOOL

VALLECITOS  
SCHOOL DISTRICT



**MGPA ARCHITECTURE, INC**  
6965 El Camino Real, Suite 105-278  
Carlsbad, California 92009  
Tele: (760) 929-1500 Fax: (760) 929-1506

**MGPA**  
ARCHITECTURE

Sheet #: **HD-1**

Date: **2/28/24**

Job #: **VSVES7.00**

DSA #: **N/A**