

Shoreline School District

Enrollment Trends, Demographics, and Projections

Prepared by

William L. (“Les”) Kendrick Ph.D.

Educational Data Solutions, LLC

P.O. Box 9693

Seattle, WA 98109

January 2024



Introduction

Last year we completed a long-range enrollment forecast for the Shoreline School District to help with long-range planning. The present report is an update of last year's work using the same assumptions we used in last year's model (the same student generations rates for new housing and the same assumptions about enrollment trends by grade).

This update includes the latest birth data (2022) and an updated birth forecast, updated information on new housing development, and updated enrollment information based on the October 2023 counts. Next fall we will do an additional update to help the district with its long range planning.

Similar to last year we have provided a low, medium, and high range District forecasts by grade, with the medium being our recommended forecast at this time. We have also allocated these forecasts to the schools to show how growth is distributed throughout the district.

We are also working on dividing the District into smaller neighborhood areas that can be moved around to adjust the school boundaries as needed to achieve greater efficiency in delivering resources. This work will continue in the Spring through consultation with District personnel.

Introduction

In a separate document we have also provided a look at the latest regional enrollment in the four-county Puget Sound area. That document provides some context for looking at this year's updated forecast.

In general, enrollment in the four-county region (King, Kitsap, Pierce, and Snohomish) is still about 23,000 students lower than what it was prior to the pandemic. There was a net loss of students in King County over the past year, and many districts in the County are still well-below where they were prior to the start of the pandemic.

Births in King County have also been declining since 2016 and the latest State forecasts suggest that we will see a slower population growth trend over the next decade, than we saw between 2012 and 2019, when the population grew at rapid pace.

These changes suggest that enrollment in King County and the region may continue to be flat or declining for the next several years until we see either an improvement in the birth trends, or a more positive population trend in which more families with children move into the King County and the Puget Sound.

Introduction

Our best estimates at the moment suggest that the Shoreline School District will see modest growth trends, and possibly even declines in the near term, with better growth in the latter part of the decade. The District does have a large number of multi-family apartments and townhomes going in throughout the District boundary area (about 10,000 units) and some of these are affordable units with multiple bedrooms that might attract more families with children. We are monitoring the growth from these developments closely and hope to have additional information by next fall that will tell us whether growth trends from this development activity have improved.

In last year's update we found that the District saw about 8 new students for every 100 multi-family units that were developed. The District also sees about 46 new students for every 100 new single-family units that are developed. Since most of the current construction activity is focused on multi-family, the District is not seeing a significant increase in enrollment from development activity. Over time, however, the sheer number of units suggests that the District will eventually start growing again. But our best long range forecast to date suggests that it will be a while before we see a return to the level the District was at prior to the pandemic.

We have also produced low and high estimates of future enrollment which show what might happen if K-12 enrollment growth were to be lower or higher than what we have assumed in our preferred model. These estimates help us to see worst and best-case scenarios.

Introduction

The following sections provide some updated enrollment information and the updated forecast numbers for the District and the schools. The reader is also referred to a companion document (“Puget Sound K-12 Enrollment Trends 2023”) which provides a regional picture of enrollment.

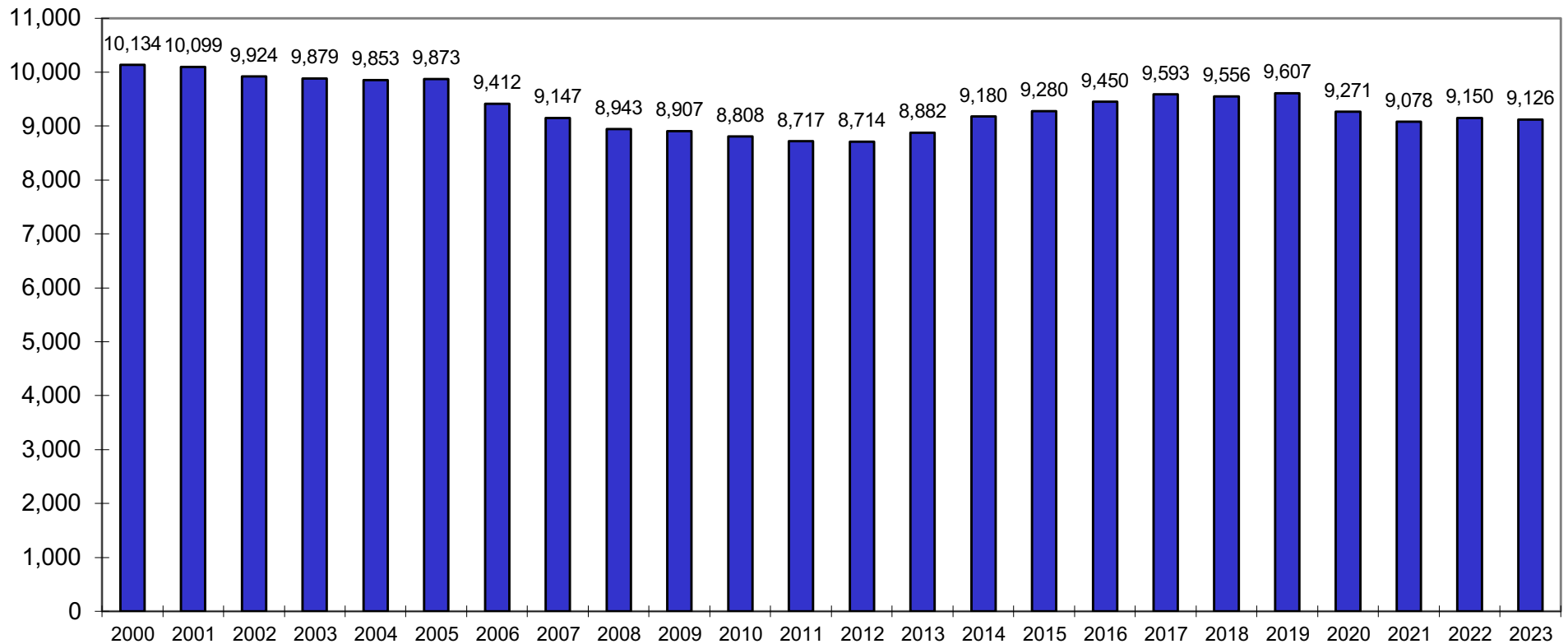
We will meet and discuss these numbers with District personnel as needed. And, as noted, we are planning an additional update next fall that will look more closely at the effects of development on the District enrollment as a whole, and the effect on specific schools and areas.

Shoreline Enrollment Trends

District Enrollment Trend

P223 Enrollment (October)

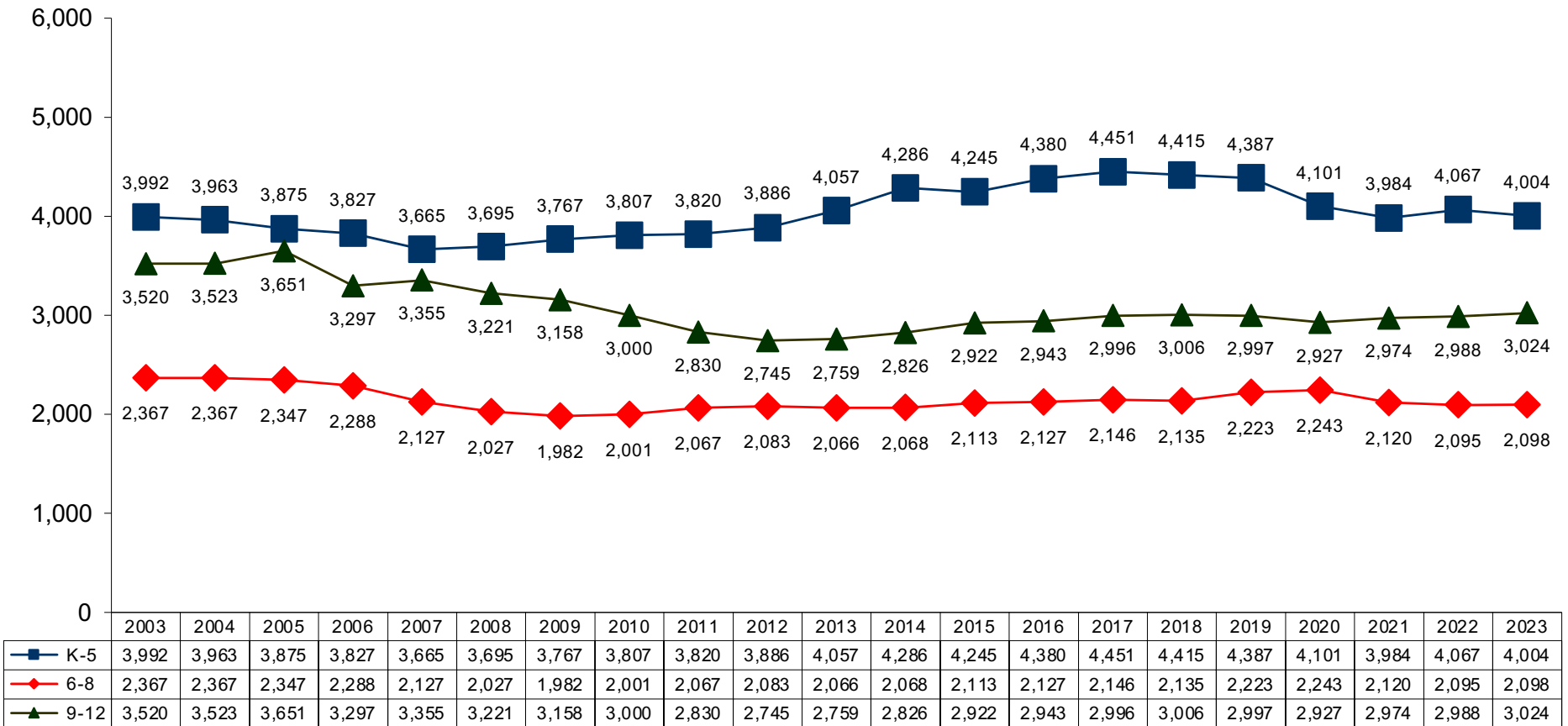
Does Not Include Full-Time Running Start Students
or Students Enrolled in Open Doors



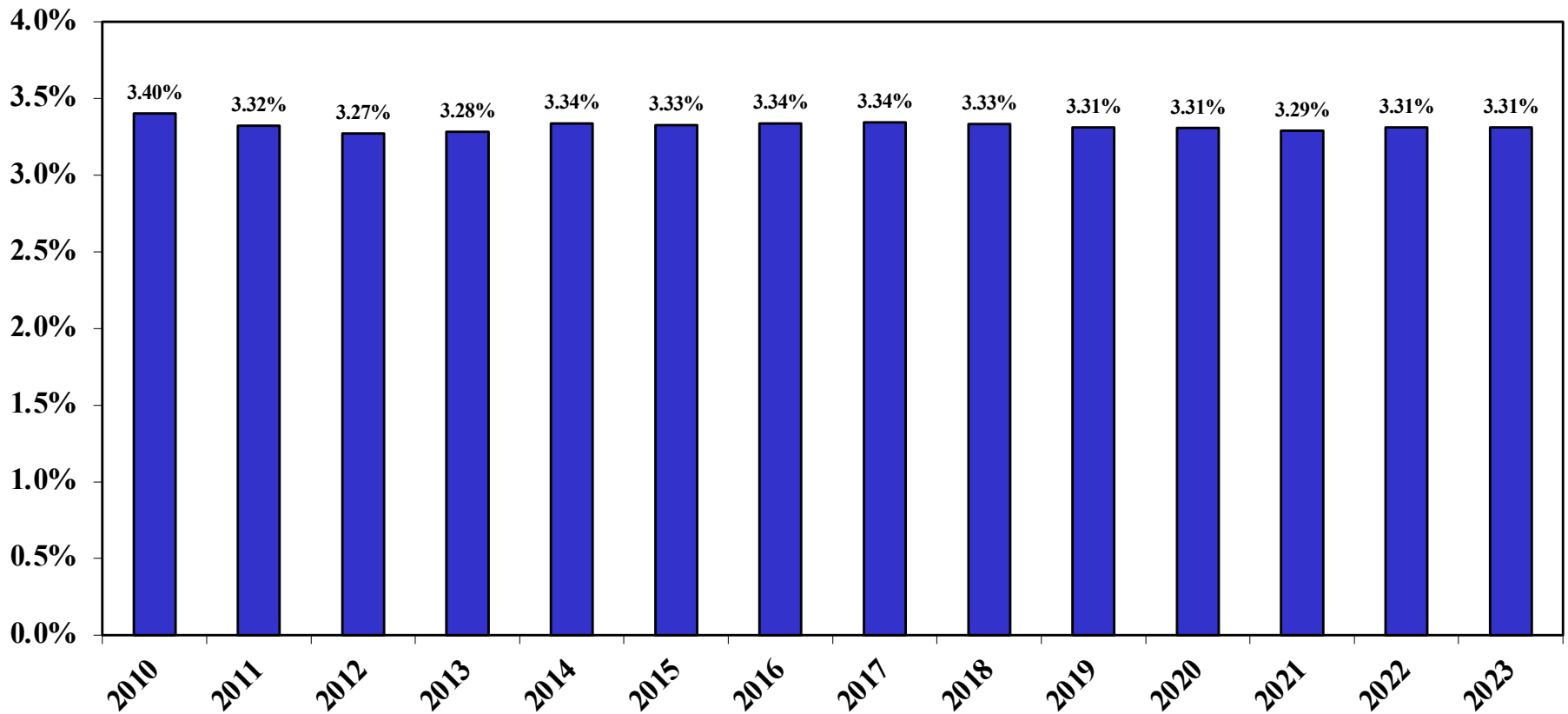
Shoreline Enrollment by Level

October Headcount

(Excludes Running Start Only Students)



Shoreline's Share of County K-12 Public School Enrollment

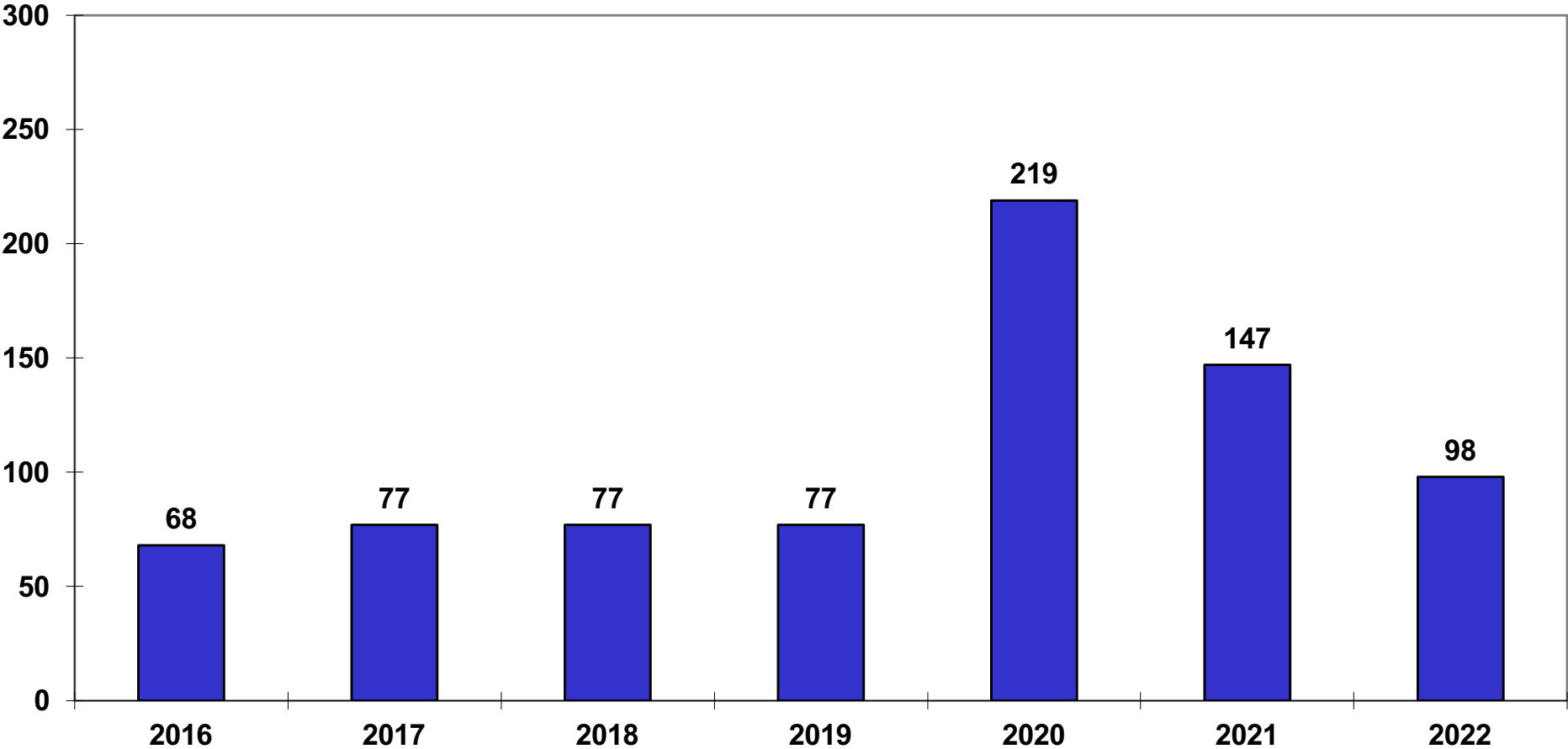


Home-Based Instruction

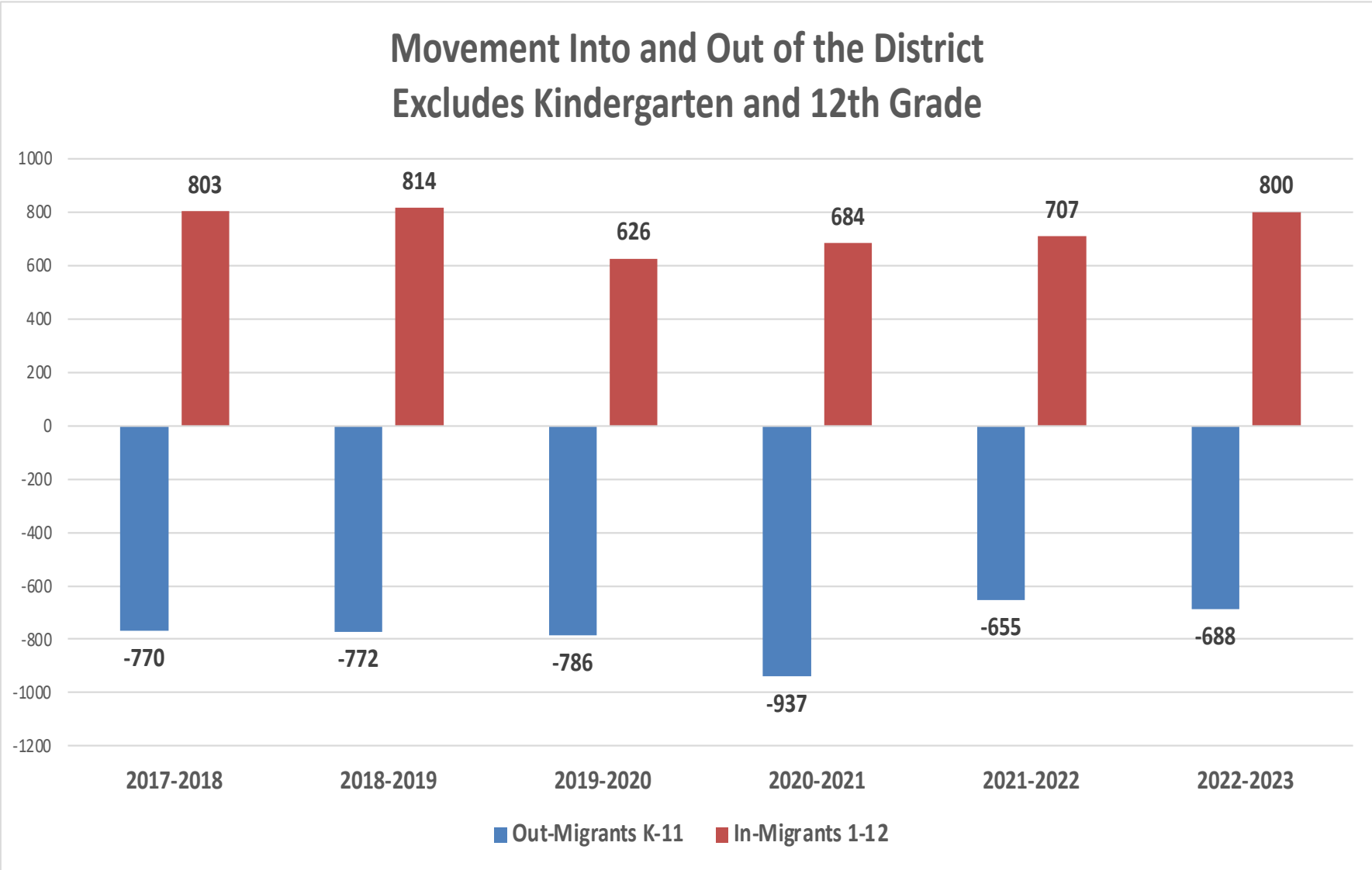
Shoreline School District

Not in the Schools

OSPI Home-Based Instruction Reports



Movement into and out of the District (Excluding Kindergarten and 12th Grade)



Demographics Past and Future

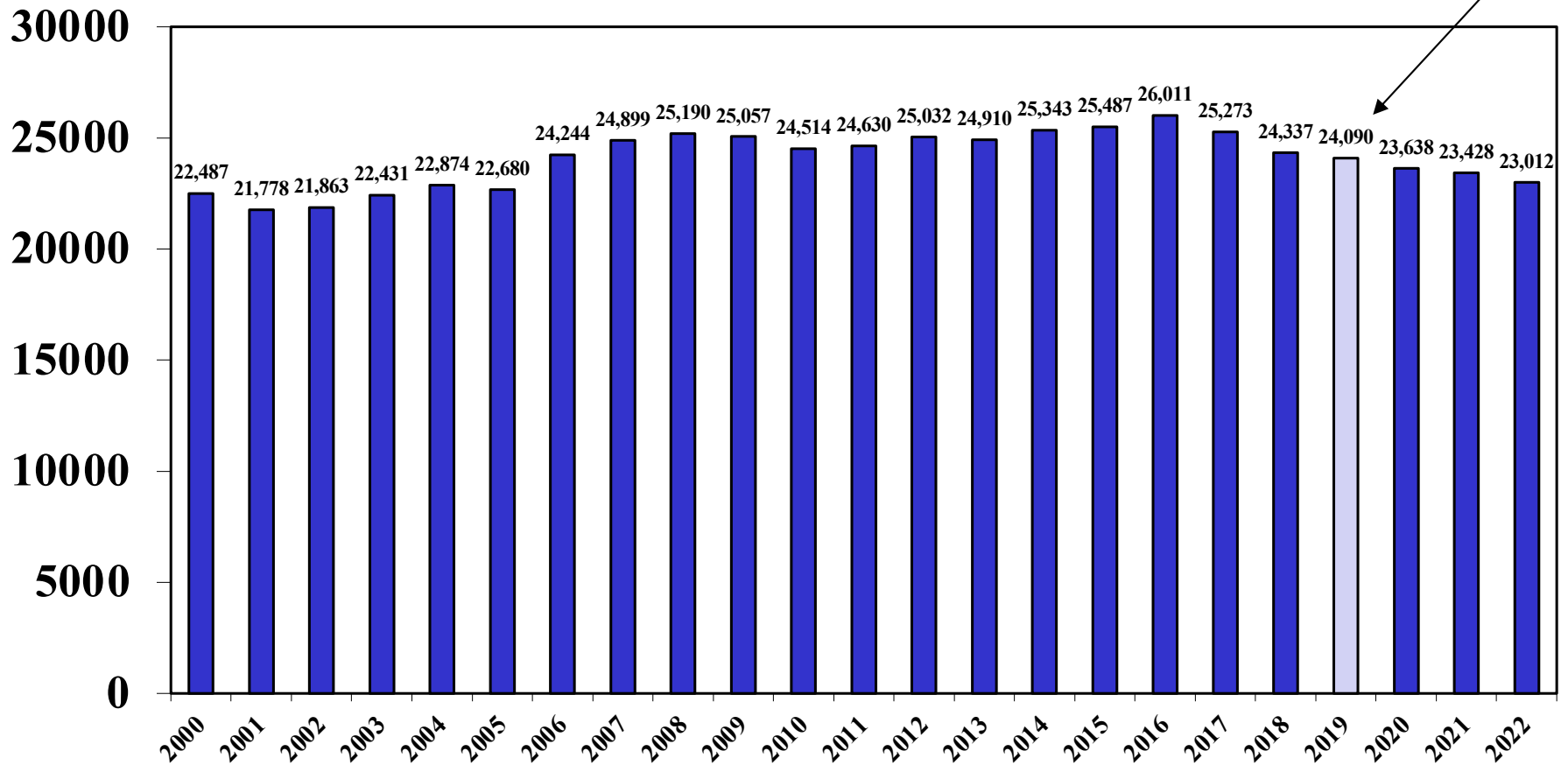
Births, Population, and Housing

King County Births

Source: Washington State Health Department

Note: The 2021 birth number comes from the CDC

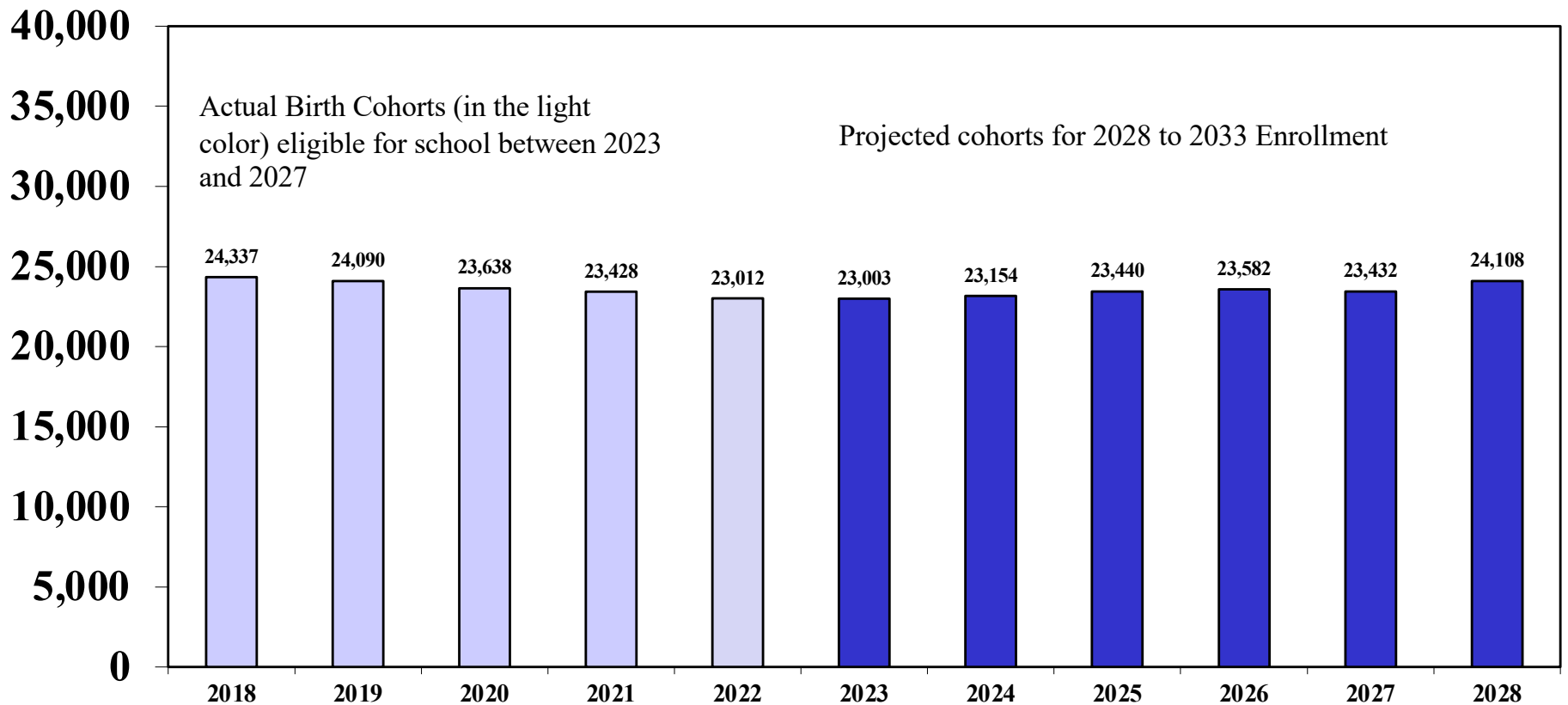
Next year's cohort



King County Birth Projections

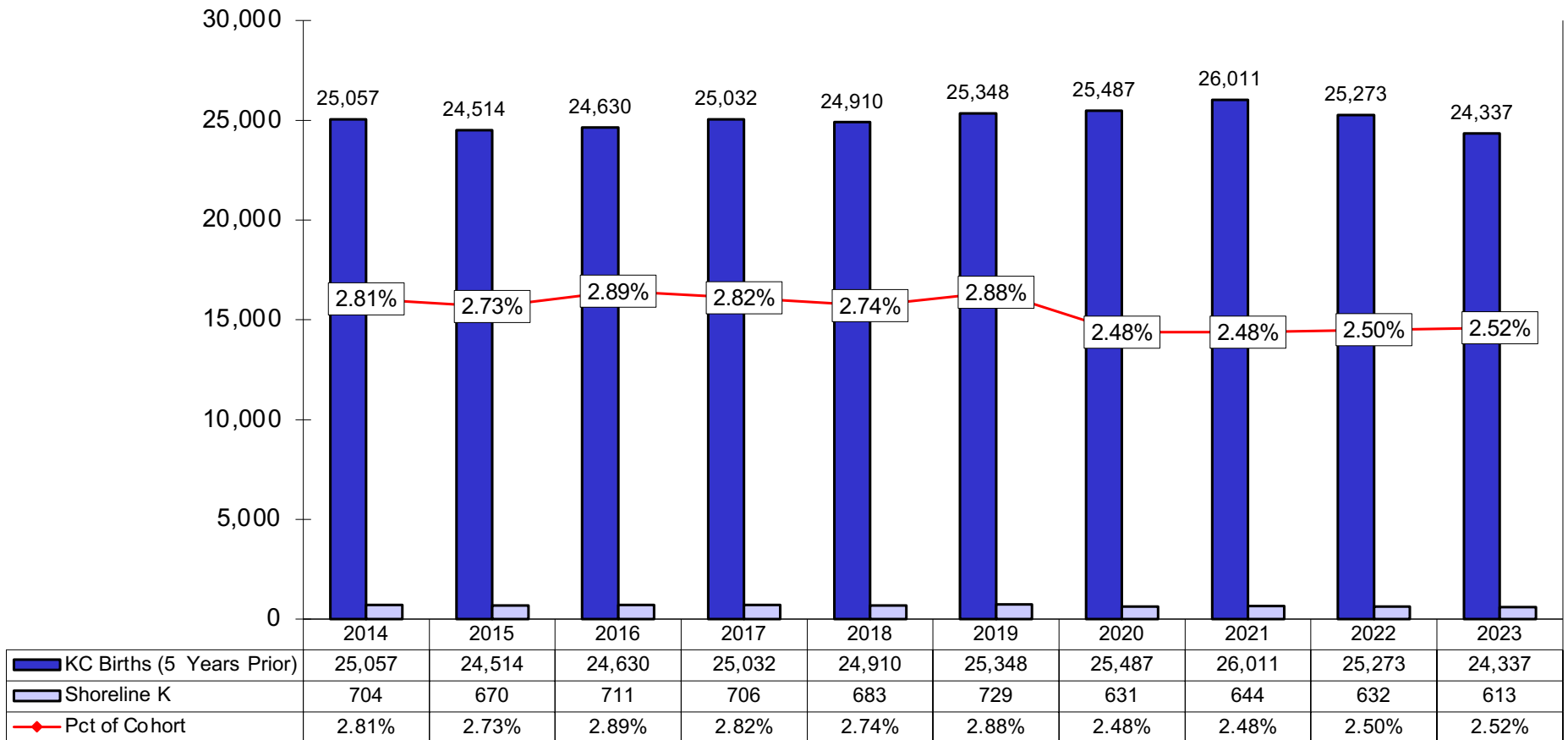
(Based on the Average the Fertility Rates for the Past Two Years and Projected Growth in Females in Their Child-Bearing Years Using the OFM Medium Range Population Forecast)

Projections



Shoreline School District

K Enrollment as a Percent of King County Births

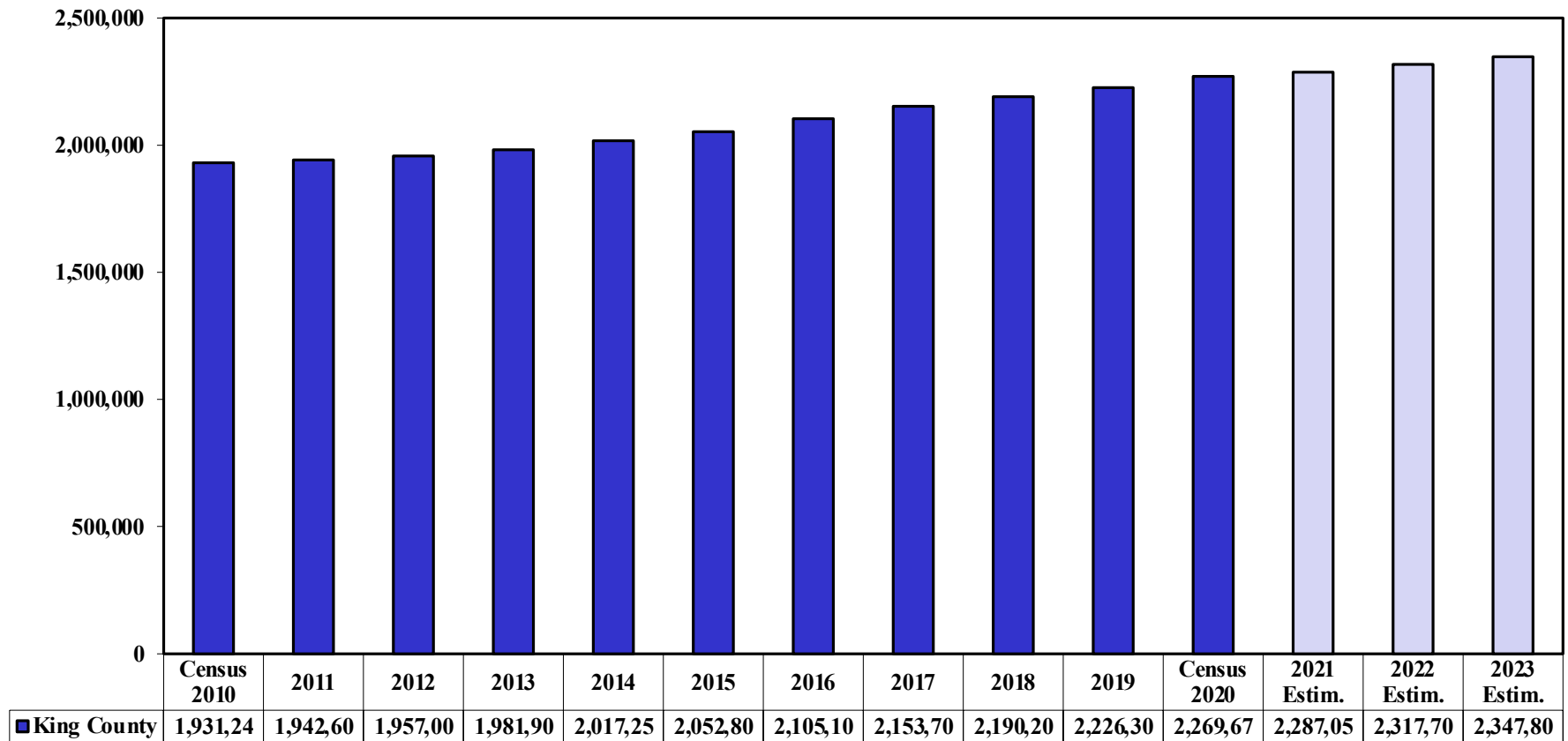


Population Trends

King County Population

Source: Office of Financial Management of the
State of Washington and Census Data

Pre-Census Estimates, Census Count, and Recent Estimates



Population History

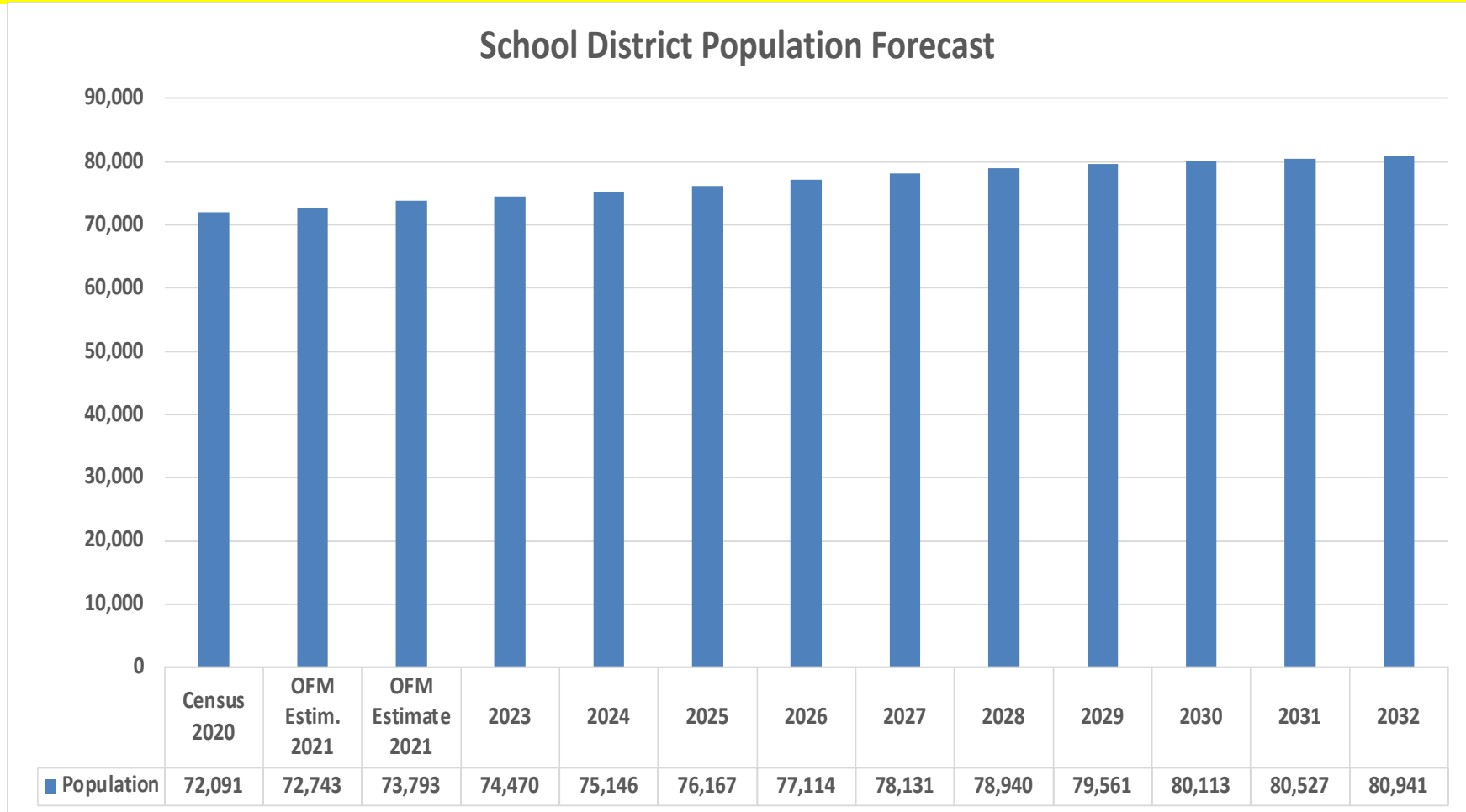
Shoreline and the County

	Census	Census	OFM Estimate	OFM Estimate	OFM Estimate
Population	<u>2010</u>	<u>2020</u>	<u>2021</u>	<u>2022</u>	<u>2023</u>
King County	1,931,249	2,269,675	2,287,050	2,317,700	2,347,800
Shoreline School District	65,547	72,091	72,743	73,793	74,634
% of County Population	3.39%	3.18%	3.18%	3.18%	3.18%
County	Change	338,426	17,375	30,650	30,100
	% Change	17.5%			
	Annual %	1.8%	0.8%	1.3%	1.3%
Shoreline School District	Change	6,544	652	1,050	841
	% Change	10.0%			
	Annual %	1.0%	0.9%	1.4%	1.1%

Shoreline School District Population Forecast

Based on the the Puget Sound Regional Council Forecast
and Our Housing Forecast (Next Section)

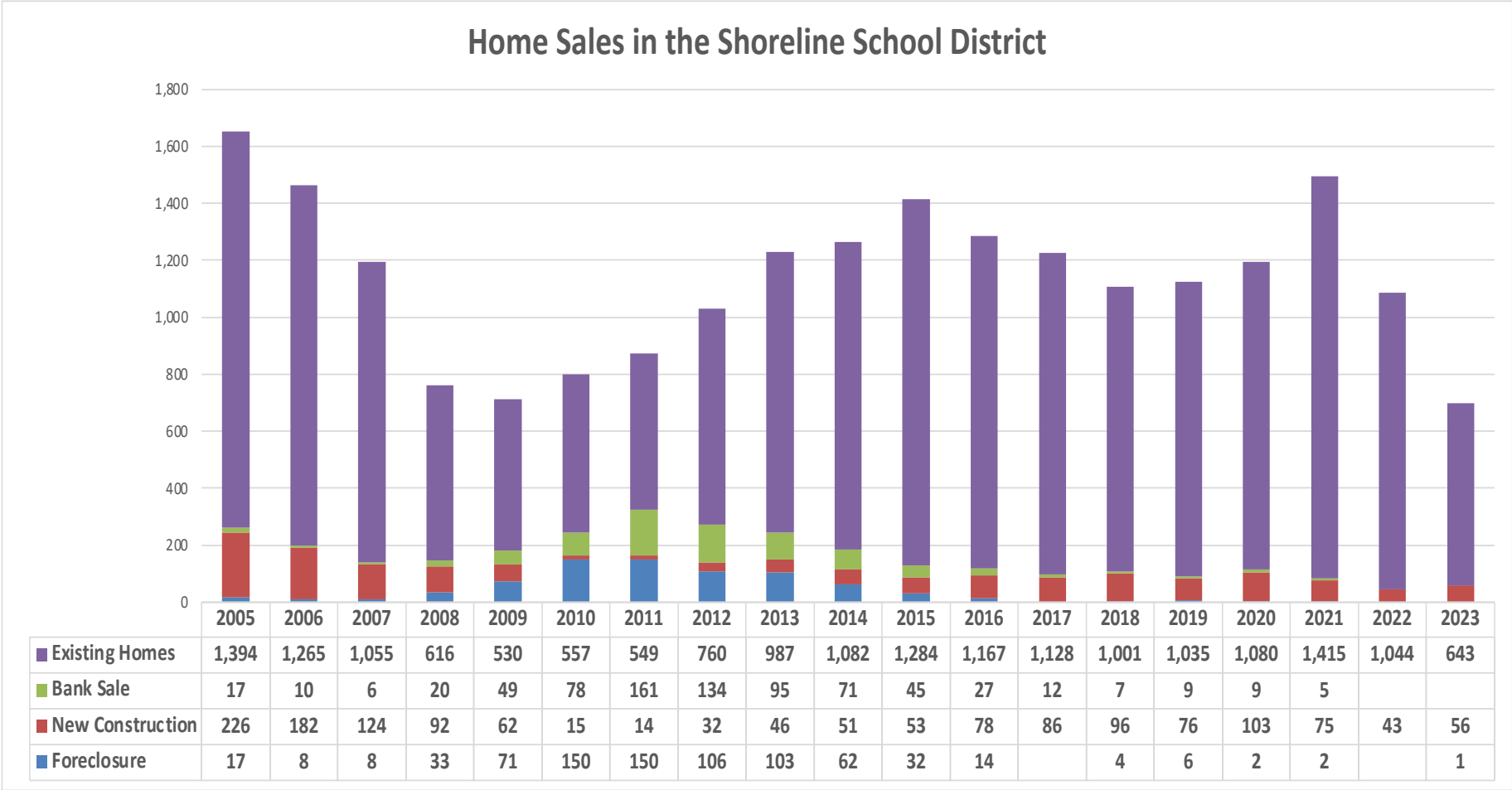
THIS CHART HAS NOT BEEN UPDATED FROM LAST YEAR



Housing Trends

Home Sales in Shoreline

Compiled from Public and Private Sources

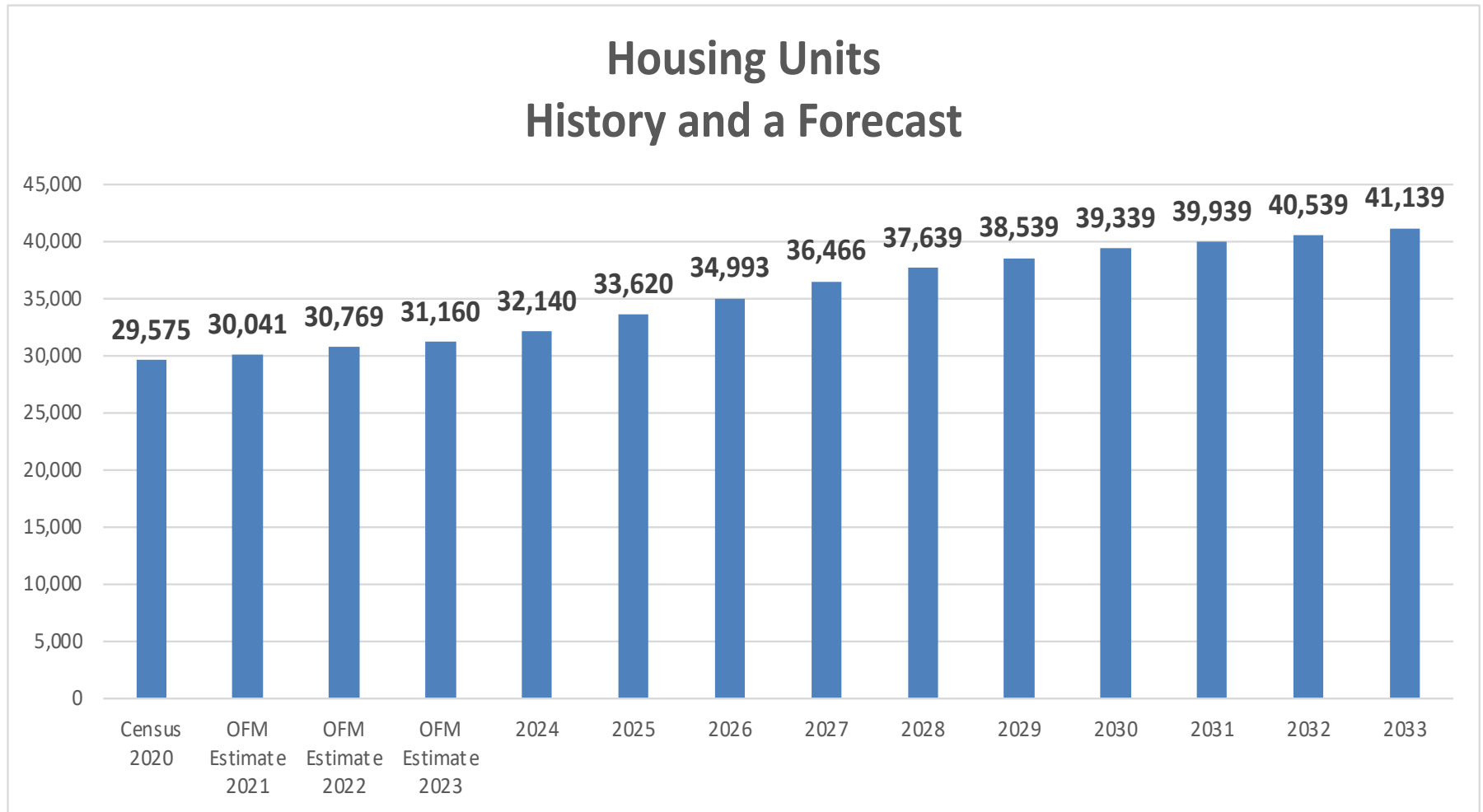


Data for 2023 is through October of last year.

Housing in the District

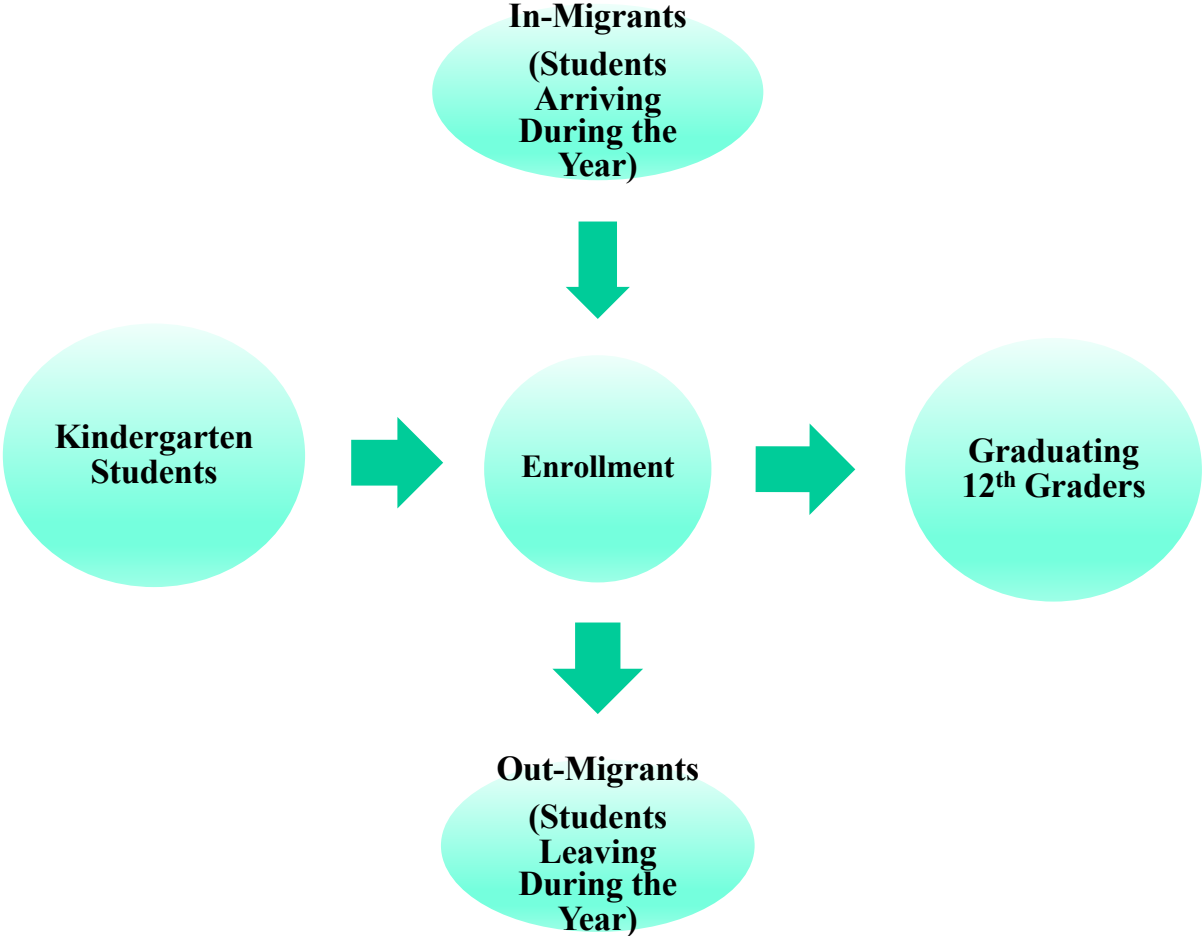
History and a Forecast by Year

Based on Recent Census Data, Pipeline Data, Permit Data and the PSRC's Land Use Forecast



Enrollment Projections

The Dynamics of Enrollment



Enrollment History and Cohort Rates Used in the Model

Enrollment History for Shoreline

Birth Year		2008	2009	2010	2011	2012	2013	2014	2015	2016	2017	2018
County Births		25,190	25,057	24,514	24,630	25,032	24,910	25,348	25,487	26,011	25,273	24,337
% of Cohort		2.76%	2.81%	2.73%	2.89%	2.82%	2.74%	2.88%	2.48%	2.48%	2.50%	2.52%
Local Births												
Shoreline		505	507	497	526	532	572	497	526	532	572	517
Lake Forest Park		101	108	94	106	81	85	94	106	81	85	85
Total		606	615	591	632	613	657	591	632	613	657	602
% of Local		1.15	1.14	1.13	1.13	1.15	1.04	1.23	1.00	1.05	0.96	1.02

Shoreline Enrollment

Grade	Oct 13	Oct 14	Oct15	Oct16	Oct17	Oct18	Oct19	Oct20	Oct21	Oct22	Oct23
0	694	704	670	711	706	683	729	631	644	632	613
1	720	738	734	696	730	744	693	708	644	693	630
2	663	755	751	759	720	734	757	662	672	670	710
3	641	687	760	762	750	724	726	720	643	690	679
4	704	664	681	764	787	754	718	702	699	662	704
5	635	738	649	688	758	776	764	678	682	720	668
6	664	673	732	661	691	758	770	749	674	684	728
7	692	692	673	753	686	692	763	753	718	681	698
8	710	703	708	713	769	685	690	741	728	730	672
9	766	819	749	767	768	827	770	735	774	777	812
10	722	733	767	755	760	764	819	750	721	781	782
11	626	707	707	731	740	689	710	751	723	714	756
12	<u>645</u>	<u>567</u>	<u>699</u>	<u>690</u>	<u>728</u>	<u>726</u>	<u>698</u>	<u>691</u>	<u>756</u>	<u>716</u>	<u>674</u>
Total	8882	9180	9280	9450	9593	9556	9607	9271	9078	9150	9126
Change	168	298	100	170	143	-37	51	-336	-193	72	-24
% Change	1.9%	3.4%	1.1%	1.8%	1.5%	-0.4%	0.5%	-3.5%	-2.1%	0.8%	-0.3%
K-5	4057	4286	4245	4380	4451	4415	4387	4101	3984	4067	4004
6-8	2066	2068	2113	2127	2146	2135	2223	2243	2120	2095	2098
9-12	2759	2826	2922	2943	2996	3006	2997	2927	2974	2988	3024

Cohort Rates

Minus 2020				
Wght	Avg	Avg		
3 Year	6 year	2012-19	2017-19	Used
0.025	0.027	0.028	0.028	0.025
1.031	1.038	1.049	1.032	1.032
1.005	1.014	1.028	1.019	1.014
1.004	0.999	1.015	0.994	0.999
1.007	1.006	1.012	1.010	1.006
1.004	1.001	1.004	0.997	1.004
1.003	1.002	1.015	0.999	1.002
0.996	1.007	1.012	1.015	1.000
0.990	1.010	1.019	1.006	1.006
1.075	1.079	1.101	1.092	1.075
0.999	0.996	0.964	0.992	0.999
0.974	0.954	0.958	0.939	0.974
0.980	0.994	0.959	0.997	0.980

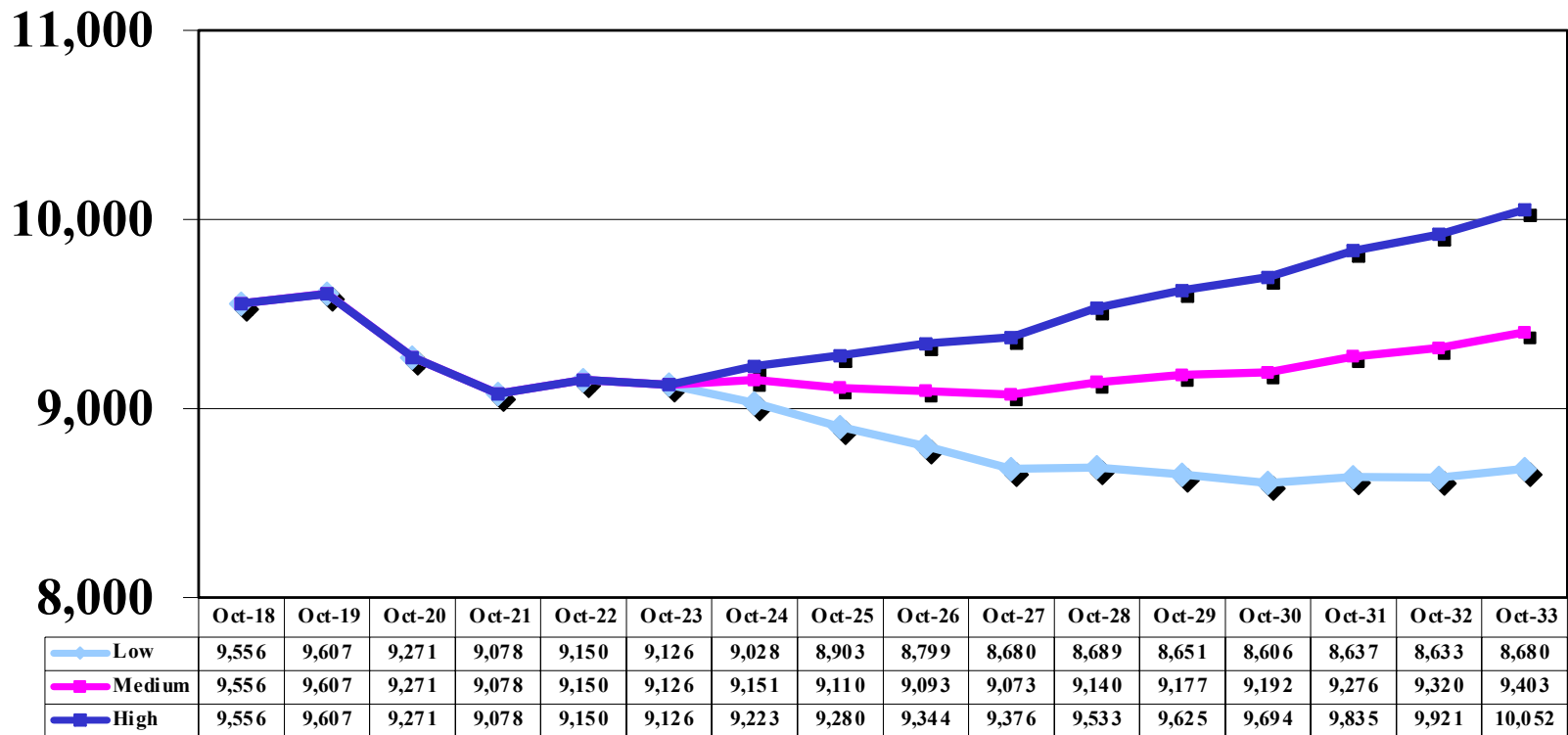
Shoreline District Forecast

Low, Medium, and High

2024-2033

Based on grade level enrollment trends, births,
and projected growth from new housing

The Medium Range Forecast is Recommended at this Time



Shoreline Forecast (Medium Range Updated)

Used Same Assumptions as Last Year with Updated Enrollment, Housing, and Birth Numbers

Birth Year	Projected Births									
	<u>2019</u>	<u>2020</u>	<u>2021</u>	<u>2022</u>	<u>2023</u>	<u>2024</u>	<u>2025</u>	<u>2026</u>	<u>2027</u>	<u>2028</u>
County Births	24,090	23,638	23,428	23,012	23,003	23,154	23,440	23,582	23,432	24,108
% of Cohort	2.57%	2.62%	2.72%	2.82%	2.82%	2.82%	2.82%	2.88%	2.88%	2.88%
Births Shoreline	512	502	498	489	489	492	498	501	498	512
Births LFP	84	83	82	81	80	81	82	83	82	84
Total	596	585	580	570	569	573	580	584	580	597
% of Local	1.04	1.06	1.10	1.14	1.14	1.14	1.14	1.16	1.16	1.16

	<u>Oct24</u>	<u>Oct25</u>	<u>Oct26</u>	<u>Oct27</u>	<u>Oct28</u>	<u>Oct29</u>	<u>Oct30</u>	<u>Oct31</u>	<u>Oct32</u>	<u>Oct33</u>
K	619	619	638	650	650	654	662	678	674	693
1	636	642	644	665	678	678	682	690	708	704
2	642	648	655	660	681	694	694	698	708	726
3	713	645	653	662	666	688	701	701	706	716
4	687	721	654	664	673	677	699	712	713	719
5	710	693	728	663	673	683	687	709	723	724
6	671	713	696	732	667	677	687	691	713	727
7	729	672	714	698	735	670	679	689	694	716
8	703	735	677	721	704	741	676	686	696	700
9	723	757	791	730	777	760	799	729	740	750
10	812	724	758	792	732	779	761	800	731	742
11	763	792	707	740	774	715	761	744	782	714
12	<u>742</u>	<u>749</u>	<u>778</u>	<u>695</u>	<u>728</u>	<u>762</u>	<u>703</u>	<u>748</u>	<u>732</u>	<u>770</u>
Total	9151	9110	9093	9073	9140	9177	9192	9276	9320	9403
<i>Change</i>	25	-41	-17	-19	66	37	15	84	45	82
<i>% change</i>	0.3%	-0.4%	-0.2%	-0.2%	0.7%	0.4%	0.2%	0.9%	0.5%	0.9%
<i>K-5</i>	4007	3969	3972	3964	4022	4074	4126	4189	4233	4282
<i>6-8</i>	2103	2119	2087	2151	2106	2088	2042	2065	2103	2144
<i>9-12</i>	3041	3022	3034	2958	3011	3015	3024	3021	2985	2976

Shoreline Forecast (Low)

		Projected Births									
Birth Year	<u>2019</u>	<u>2020</u>	<u>2021</u>	<u>2022</u>	<u>2023</u>	<u>2024</u>	<u>2025</u>	<u>2026</u>	<u>2027</u>	<u>2028</u>	
County Births	24,090	23,638	23,428	23,012	23,003	23,154	23,440	23,582	23,432	24,108	
% of Cohort	2.52%	2.57%	2.67%	2.77%	2.77%	2.77%	2.77%	2.82%	2.82%	2.82%	
Births Shoreline	512	502	498	489	489	492	498	501	498	512	
Births LFP	84	83	82	81	80	81	82	83	82	84	
Total	596	585	580	570	569	573	580	584	580	597	
	1.02	1.04	1.08	1.12	1.12	1.12	1.12	1.14	1.14	1.14	
		<u>Oct24</u>	<u>Oct25</u>	<u>Oct26</u>	<u>Oct27</u>	<u>Oct28</u>	<u>Oct29</u>	<u>Oct30</u>	<u>Oct31</u>	<u>Oct32</u>	<u>Oct33</u>
K	606	607	625	637	637	641	649	665	661	680	
1	612	623	624	645	658	657	662	670	687	683	
2	604	617	630	633	654	667	667	671	680	698	
3	702	601	615	630	634	654	667	666	672	681	
4	678	703	603	619	634	638	658	671	671	677	
5	708	677	703	605	622	636	640	661	674	675	
6	663	704	673	699	603	619	634	637	658	671	
7	727	657	698	669	695	599	615	629	634	654	
8	709	725	656	698	668	694	598	614	629	633	
9	701	755	773	700	744	713	740	639	656	672	
10	831	694	748	766	695	738	707	734	634	651	
11	760	802	671	724	741	672	714	684	711	614	
12	<u>729</u>	<u>738</u>	<u>780</u>	<u>654</u>	<u>705</u>	<u>722</u>	<u>655</u>	<u>696</u>	<u>667</u>	<u>692</u>	
Total	9028	8903	8799	8680	8689	8651	8606	8637	8633	8680	
<i>Change</i>	-98	-125	-104	-119	9	-38	-45	31	-4	47	
<i>% change</i>	-1.1%	-1.4%	-1.2%	-1.4%	0.1%	-0.4%	-0.5%	0.4%	0.0%	0.5%	
<i>K-5</i>	3910	3827	3799	3770	3838	3894	3942	4003	4045	4092	
<i>6-8</i>	2098	2086	2027	2066	1965	1911	1847	1881	1921	1959	
<i>9-12</i>	3020	2990	2973	2845	2886	2846	2817	2753	2667	2629	

Shoreline Forecast (High)

Projected Births										
Birth Year	<u>2019</u>	<u>2020</u>	<u>2021</u>	<u>2022</u>	<u>2023</u>	<u>2024</u>	<u>2025</u>	<u>2026</u>	<u>2027</u>	<u>2028</u>
County Births	24,090	23,638	23,428	23,012	23,003	23,154	23,440	23,582	23,432	24,108
% of Cohort	2.62%	2.67%	2.78%	2.88%	2.88%	2.88%	2.88%	2.93%	2.93%	2.93%
Births Shoreline	512	502	498	489	489	492	498	501	498	512
Births LFP	84	83	82	81	80	81	82	83	82	84
Total	596	585	580	570	569	573	580	584	580	597
	1.06	1.08	1.12	1.16	1.16	1.16	1.16	1.19	1.19	1.19
	<u>Oct24</u>	<u>Oct25</u>	<u>Oct26</u>	<u>Oct27</u>	<u>Oct28</u>	<u>Oct29</u>	<u>Oct30</u>	<u>Oct31</u>	<u>Oct32</u>	<u>Oct33</u>
K	631	632	651	663	663	667	675	692	687	707
1	624	661	663	685	698	698	703	711	730	725
2	616	642	682	686	709	722	722	727	737	756
3	716	625	653	696	700	723	737	736	742	752
4	692	731	640	671	715	719	742	756	757	763
5	723	705	746	656	687	732	736	760	775	776
6	676	733	715	758	666	698	743	748	772	788
7	742	684	742	724	768	675	707	753	758	783
8	723	754	697	756	738	782	688	721	768	773
9	715	786	821	759	823	804	852	749	786	837
10	847	723	795	830	768	833	814	862	759	795
11	775	835	713	784	819	758	822	803	851	750
12	<u>744</u>	<u>768</u>	<u>828</u>	<u>708</u>	<u>779</u>	<u>814</u>	<u>753</u>	<u>816</u>	<u>798</u>	<u>845</u>
Total	9223	9280	9344	9376	9533	9625	9694	9835	9921	10052
<i>Change</i>	97	57	64	32	157	92	69	141	86	131
<i>% change</i>	1.1%	0.6%	0.7%	0.3%	1.7%	1.0%	0.7%	1.5%	0.9%	1.3%
<i>K-5</i>	4001	3996	4034	4057	4172	4262	4316	4382	4429	4480
<i>6-8</i>	2141	2171	2153	2238	2172	2155	2139	2222	2299	2344
<i>9-12</i>	3081	3112	3156	3081	3189	3208	3240	3230	3193	3228

School Forecasts

Projection Summary by School

Medium Growth Projections (2024-2033)

	Oct-19	Oct-20	Oct-21	Oct-22	Oct-23	Oct-24	Oct-25	Oct-26	Oct-27	Oct-28	Oct-29	Oct-30	Oct-31	Oct-32	Oct-33
Briarcrest	524	446	430	462	468	468	454	458	468	473	492	490	488	485	482
Brookside	473	396	347	340	365	362	362	365	372	380	370	377	385	391	398
Echo Lake	427	403	391	408	399	396	404	410	407	406	403	409	416	422	430
Highland Terrace	467	380	383	350	330	340	353	376	391	405	417	425	434	441	449
Lake Forest Park	506	449	438	426	393	378	367	353	355	348	360	367	375	381	387
Meridian Park	748	505	522	528	514	553	531	538	508	526	544	545	549	551	553
North City Overflow K	277														
Parkwood	455	377	390	421	409	426	439	445	444	444	441	460	479	496	512
Ridgecrest	514	450	440	451	447	446	451	442	478	503	513	508	505	500	496
Syre	485	446	428	471	464	426	398	377	333	325	322	328	335	341	346
Cascade K-8	142	133	133	140	122	130	129	129	128	130	131	134	137	139	141
HM. EXC	91	115	80	68	90	78	77	77	77	78	79	80	82	83	85
Private Sp. Ed.	0	1	2	2	3	3	3	2	2	2	2	3	3	3	3
Totals	5109	4101	3984	4067	4004	4007	3969	3972	3964	4022	4074	4126	4189	4233	4282
Einstein	715	1131	1038	1014	998	1015	1013	985	1008	986	977	961	973	990	1009
Kellogg	663	991	977	982	1004	1000	1014	1010	1046	1030	1022	995	1003	1020	1039
Cascade K-8	80	76	64	69	59	56	57	57	61	57	56	54	56	58	60
HM. EXC	37	42	37	26	35	31	33	32	34	31	30	30	31	32	33
Private Sp. Ed.	3	3	4	4	2	2	2	3	3	3	2	2	2	3	3
Totals	1498	2243	2120	2095	2098	2103	2119	2087	2151	2106	2088	2042	2065	2103	2144
Shorecrest	1491	1452	1467	1480	1493	1494	1492	1487	1455	1488	1494	1493	1484	1462	1455
Shorewood	1504	1473	1505	1505	1528	1544	1528	1544	1501	1521	1518	1529	1534	1520	1519
HM. EXC	0	0	0	0	0	0	0	0	0	0	0	0	0	0	0
Private Sp. Ed.	2	2	2	3	3	3	3	3	2	3	3	3	3	3	3
Totals	2997	2927	2974	2988	3024	3041	3022	3034	2958	3011	3015	3024	3021	2985	2976
Totals	9604	9271	9078	9150	9126	9151	9110	9093	9073	9140	9177	9192	9276	9320	9403

Projection Summary by School

Low Growth Projections (2024-2033)

	Oct-19	Oct-20	Oct-21	Oct-22	Oct-23	Oct-24	Oct-25	Oct-26	Oct-27	Oct-28	Oct-29	Oct-30	Oct-31	Oct-32	Oct-33
Briarcrest	524	446	430	462	468	456	438	438	445	452	470	468	466	463	461
Brookside	473	396	347	340	365	354	350	350	353	363	353	360	368	374	380
Echo Lake	427	403	391	408	399	385	390	392	387	388	386	391	398	404	411
Highland Terrace	467	380	383	350	330	332	341	361	373	388	399	407	416	423	430
Lake Forest Park	506	449	438	426	393	369	354	337	338	333	344	351	359	364	370
Meridian Park	748	505	522	528	514	541	513	514	482	501	519	520	524	525	528
North City Overflow K	277														
Parkwood	455	377	390	421	409	416	423	426	422	423	421	439	458	473	489
Ridgecrest	514	450	440	451	447	434	435	423	455	480	490	486	483	478	474
Syre	485	446	428	471	464	416	384	360	316	311	308	314	321	326	331
Cascade K-8	142	133	133	140	122	127	124	123	122	124	125	128	131	133	135
HM. EXC	91	115	80	68	90	77	75	74	73	74	75	77	78	80	81
Private Sp. Ed.	0	1	2	2	3	3	2	2	2	2	2	2	2	3	3
Totals	5109	4101	3984	4067	4004	3910	3827	3799	3770	3838	3894	3942	4003	4045	4092
Einstein	715	1131	1038	1014	998	1013	997	957	968	920	895	869	887	905	922
Kellogg	663	991	977	982	1004	997	998	981	1004	961	936	899	913	932	949
Cascade K-8	80	76	64	69	59	56	56	56	59	53	51	49	51	53	55
HM. EXC	37	42	37	26	35	31	33	31	32	29	28	27	28	29	30
Private Sp. Ed.	3	3	4	4	2	2	2	3	3	2	2	2	2	2	2
Totals	1498	2243	2120	2095	2098	2098	2086	2027	2066	1965	1911	1847	1881	1921	1959
Shorecrest	1491	1452	1467	1480	1493	1484	1476	1457	1399	1426	1410	1390	1352	1307	1285
Shorewood	1504	1473	1505	1505	1528	1533	1512	1513	1443	1458	1433	1424	1398	1358	1341
HM. EXC	0	0	0	0	0	0	0	0	0	0	0	0	0	0	0
Private Sp. Ed.	2	2	2	3	3	3	3	3	2	2	2	2	2	2	2
Totals	2997	2927	2974	2988	3024	3020	2990	2973	2845	2886	2846	2817	2753	2667	2629
Totals	9604	9271	9078	9150	9126	9028	8903	8799	8680	8689	8651	8606	8637	8633	8680

Projection Summary by School

High Growth Projections (2024-2033)

	Oct-19	Oct-20	Oct-21	Oct-22	Oct-23	Oct-24	Oct-25	Oct-26	Oct-27	Oct-28	Oct-29	Oct-30	Oct-31	Oct-32	Oct-33
Briarcrest	524	446	430	462	468	467	457	465	479	491	515	513	511	508	505
Brookside	473	396	347	340	365	362	365	371	380	394	387	394	403	409	416
Echo Lake	427	403	391	408	399	395	407	416	417	421	422	427	435	441	449
Highland Terrace	467	380	383	350	330	340	356	383	401	421	435	444	454	461	469
Lake Forest Park	506	449	438	426	393	378	369	358	364	361	376	384	392	399	405
Meridian Park	748	505	522	528	514	554	536	546	520	546	570	572	576	577	580
North City Overflow K	277														
Parkwood	455	377	390	421	409	425	442	452	454	461	462	481	501	519	537
Ridgecrest	514	450	440	451	447	445	454	449	490	521	536	531	528	523	518
Syre	485	446	428	471	464	425	401	383	340	337	337	343	351	356	362
Cascade K-8	142	133	133	140	122	130	130	131	131	135	137	140	143	145	147
HM. EXC	91	115	80	68	90	78	78	78	79	81	83	84	86	87	89
Private Sp. Ed.	0	1	2	2	3	3	3	2	2	3	3	3	3	3	3
Totals	5109	4101	3984	4067	4004	4001	3996	4034	4057	4172	4262	4316	4382	4429	4480
Einstein	715	1131	1038	1014	998	1033	1038	1016	1048	1017	1009	1007	1047	1083	1104
Kellogg	663	991	977	982	1004	1018	1039	1042	1088	1062	1055	1042	1079	1116	1136
Cascade K-8	80	76	64	69	59	57	58	59	64	58	58	57	60	63	65
HM. EXC	37	42	37	26	35	31	34	33	35	32	31	31	33	35	36
Private Sp. Ed.	3	3	4	4	2	2	2	3	3	3	3	3	3	3	3
Totals	1498	2243	2120	2095	2098	2141	2171	2153	2238	2172	2155	2139	2222	2299	2344
Shorecrest	1491	1452	1467	1480	1493	1514	1537	1547	1516	1576	1590	1599	1587	1564	1578
Shorewood	1504	1473	1505	1505	1528	1564	1573	1606	1563	1611	1616	1638	1641	1626	1647
HM. EXC	0	0	0	0	0	0	0	0	0	0	0	0	0	0	0
Private Sp. Ed.	2	2	2	3	3	3	3	3	3	3	3	3	3	3	3
Totals	2997	2927	2974	2988	3024	3081	3112	3156	3081	3189	3208	3240	3230	3193	3228
Totals	9604	9271	9078	9150	9126	9223	9280	9344	9376	9533	9625	9694	9835	9921	10052

Appendix A

Student Generation Rates
From New Housing

Shoreline School District					
Student Generation Rates by Grade Level and Housing Type					
Permit Years 2017-2021					
2/28/23					
Permit Type	Permit Subtype	Number of Units	Grade Level	Students Generated	SGR
MFR	Apartment	1148	K-5	47	0.041
			6-8	21	0.018
			9-12	25	0.022
	<i>APT Student Subtotal→</i>			93	0.081
	Townhouse	280	K-5	8	0.029
			6-8	3	0.011
			9-12	4	0.014
<i>TWN Student Subtotal→</i>			15	0.054	
			MFR Totals→	108	0.076
SFR	New SFR	270	K-5	80	0.296
			6-8	24	0.089
			9-12	19	0.070
	<i>SFR Student Subtotal→</i>			123	0.456
			SFR Totals→	123	0.456

Appendix B

Housing Pipeline

Multi-Family Projects

MFMapID	MFPmtTitle	MFJurisJuris	MFPmtSubType	MFCurrentStatus	MFNumUnits	MFStreetAddr	SA_Elem	SA_JHigh	SA_High
202	1005 NE 180th St Townhomes	Shoreline	TWNH	Applied	8	1005 NE 180TH ST	Ridgecrest	Kellogg	Shorecrest
170	104 NE 147th St Apartments	Shoreline	APTS	Pre-Applied	364	104 NE 147TH ST	Parkwood	Albert Einstein	Shorewood
133	112 NE 180th St Townhomes	Shoreline	TWNH	Issued	6	114 NE 180TH ST	Meridian Park	Albert Einstein	Shorewood
22	1234 NE 148th St Townhomes	Shoreline	TWNH	Pre-Applied	8	1234 NE 148TH ST	Briarcrest	Kellogg	Shorecrest
184	12th Avenue Townhomes	Shoreline	TWNH	Issued	86	18016 12TH AVE NE	Ridgecrest	Kellogg	Shorecrest
160	14540 Meridian Ave N Townhomes	Shoreline	TWNH	Pre-Applied	20	14540 MERIDIAN AVE N	Parkwood	Albert Einstein	Shorewood
176	14545 Whitman Ave N Townhomes	Shoreline	TWNH	Applied	12	14547 WHITMAN AVE N	Parkwood	Albert Einstein	Shorewood
6	14551 32nd Ave NE Townhomes	Shoreline	TWNH	Closed	6	14551 32ND AVE NE	Briarcrest	Kellogg	Shorecrest
13	14562 6th Ave NE Apartments	Shoreline	APTS	Pre-Applied	411	14562 6TH AVE NE	Briarcrest	Kellogg	Shorecrest
168	145th St Shoreline TOD Multifamily	Shoreline	APTS	Applied	550	108 NE 145TH ST	Parkwood	Albert Einstein	Shorewood
147	14600 Corliss Ave N Townhomes	Shoreline	TWNH	Applied	13	14600 CORLISS AVE N	Parkwood	Albert Einstein	Shorewood
148	14604 Corliss Ave N Townhomes	Shoreline	TWNH	Issued	6	14612 CORLISS AVE N	Parkwood	Albert Einstein	Shorewood
7	14709 32nd Ave NE Townhomes	Shoreline	TWNH	Issued	5	14709 32ND AVE NE	Briarcrest	Kellogg	Shorecrest
21	1514 NE 146th St Apartments	Shoreline	APTS	Pre-Applied	18	1514 NE 146TH ST	Briarcrest	Kellogg	Shorecrest
14	15208 6th Ave NE Townhomes	Shoreline	TWNH	Pre-Applied	20	15208 6TH AVE NE	Briarcrest	Kellogg	Shorecrest
15	15258 6th Ave NE Townhomes	Shoreline	TWNH	Pre-Applied	20	15258 6TH AVE NE	Briarcrest	Kellogg	Shorecrest
190	15720 5th Ave NE Townhomes	Shoreline	TWNH	Applied	2	15720 5TH AVE NE	Ridgecrest	Kellogg	Shorecrest
64	1702 N 185th St Townhomes	Shoreline	TWNH	Applied	12	1702 N 185TH ST	Echo Lake	Albert Einstein	Shorewood
186	17127 15th Ave NE Townhomes	Shoreline	TWNH	Pre-Applied	50	17127 15TH AVE NE	Ridgecrest	Kellogg	Shorecrest
137	17917 Stone Ave N Townhomes	Shoreline	TWNH	Issued	5	17917 STONE AVE N	Meridian Park	Albert Einstein	Shorewood
177	18004 10th Ave NE Townhomes	Shoreline	TWNH	Applied	17	18004 10TH AVE NE	Ridgecrest	Kellogg	Shorecrest
104	18007 3rd Ave NE Townhomes	Shoreline	TWNH	Applied	7	18007 3RD AVE NE	Meridian Park	Albert Einstein	Shorewood
197	18008 8th Ave NE Townhomes	Shoreline	TWNH	Pre-Applied	6	18008 8TH AVE NE	Ridgecrest	Kellogg	Shorecrest
102	18011 2nd Ave NE Townhomes	Shoreline	TWNH	Applied	12	18017 2ND AVE NE	Meridian Park	Albert Einstein	Shorewood
191	18016 7th Ave NE Townhomes	Shoreline	TWNH	Issued	9	18010 7TH AVE NE	Ridgecrest	Kellogg	Shorecrest
141	18027 Sunnyside Ave N Townhomes	Shoreline	TWNH	Pre-Applied	5	18027 SUNNYSIDE AVE N	Meridian Park	Albert Einstein	Shorewood
179	18028 10th Ave NE Townhomes	Shoreline	TWNH	Issued	7	18028 10TH AVE NE	Ridgecrest	Kellogg	Shorecrest
138	18029 Stone Ave N Townhomes	Shoreline	TWNH	Issued	4	18027 STONE AVE N	Meridian Park	Albert Einstein	Shorewood
103	18032 2nd Ave NE Townhomes	Shoreline	TWNH	Issued	5	18032 2ND AVE NE	Meridian Park	Albert Einstein	Shorewood

Multi-Family Projects

MFMapID	MFPmtTitle	MFJurisJuris	MFPmtSubType	MFCurrentStatus	MFNumUnits	MFStreetAddr	SA_Elem	SA_JHigh	SA_High
142	18032 Sunnyside Ave N Townhomes	Shoreline	TWNH	Issued	7	18032 SUNNYSIDE AVE N	Meridian Park	Albert Einstein	Shorewood
105	18061 3rd Ave NE Townhomes	Shoreline	TWNH	Pre-Applied	5	18061 3RD AVE NE	Meridian Park	Albert Einstein	Shorewood
131	1815 N 185th St Townhomes	Shoreline	TWNH	Applied	13	1815 N 185TH ST	Meridian Park	Albert Einstein	Shorewood
98	18309 1st Ave NE Townhomes	Shoreline	TWNH	Issued	5	18309 1ST AVE NE	Meridian Park	Albert Einstein	Shorewood
99	18315 1st Ave NE Townhomes	Shoreline	TWNH	Applied	6	18315 1ST AVE NE	Meridian Park	Albert Einstein	Shorewood
106	18324 3rd Ave NE Apartments	Shoreline	APTS	Applied	350	18324 3RD AVE NE	Meridian Park	Albert Einstein	Shorewood
101	18327 1st Ave NE Townhomes	Shoreline	TWNH	Issued	5	18327 1ST AVE NE	Meridian Park	Albert Einstein	Shorewood
112	18402 Corliss Ave N Townhomes	Shoreline	TWNH	Issued	7	18402 CORLISS AVE N	Meridian Park	Albert Einstein	Shorewood
115	18409 Meridian Ave N Apartments	Shoreline	APTS	Pre-Applied	27	18409 MERIDIAN AVE N	Meridian Park	Albert Einstein	Shorewood
180	18504 10th Ave NE Townhomes	Shoreline	TWNH	Applied	8	18504 10TH AVE NE	Ridgecrest	Kellogg	Shorecrest
74	18519 Wallingford Ave N Townhomes	Shoreline	TWNH	Pre-Applied	7	18519 WALLINGFORD AVE N	Echo Lake	Albert Einstein	Shorewood
52	18532 Ashworth Ave N Townhomes	Shoreline	TWNH	Issued	6	18534 ASHWORTH AVE N	Echo Lake	Albert Einstein	Shorewood
49	18715 1st Ave NE Townhomes	Shoreline	TWNH	Pre-Applied	7	18715 1ST AVE NE	Echo Lake	Albert Einstein	Shorewood
199	18820 8th Ave NE Apartments	Shoreline	APTS	Pre-Applied	838	18820 8TH AVE NE	Ridgecrest	Kellogg	Shorecrest
211	18840 8th Ave NW Apartments	Shoreline	APTS	Pre-Applied	226	18840 8TH AVE NW	Syre	Albert Einstein	Shorewood
56	192 Shoreline Mixed Use (Crux)	Shoreline	APTS	Issued	250	19022 AURORA AVE N	Echo Lake	Albert Einstein	Shorewood
50	19232 5th Ave NE Apartments	Shoreline	APTS	Applied	11	19232 5TH AVE NE	Echo Lake	Albert Einstein	Shorewood
57	198 Shoreline Mixed Use	Shoreline	APTS	Issued	100	19806 AURORA AVE N	Echo Lake	Albert Einstein	Shorewood
185	20313 14th Ave NE Townhomes	Shoreline	TWNH	Applied	8	20313 14TH AVE NE	Ridgecrest	Kellogg	Shorecrest
132	2117 N 185th St Townhomes	Shoreline	TWNH	Pre-Applied	8	2117 N 185TH ST	Meridian Park	Albert Einstein	Shorewood
134	212 NE 180th St Townhomes	Shoreline	TWNH	Issued	8	212 NE 180TH ST	Meridian Park	Albert Einstein	Shorewood
164	2137 N 147th St Townhomes	Shoreline	TWNH	Applied	6	2137 N 147TH ST	Parkwood	Albert Einstein	Shorewood
66	2146 N 185th St Apartments	Shoreline	APTS	Issued	22	2146 N 185TH ST	Echo Lake	Albert Einstein	Shorewood
165	2151 N 147th St Townhomes	Shoreline	TWNH	Issued	6	2151 N 147TH ST	Parkwood	Albert Einstein	Shorewood
67	2152 N 185th St Apartments	Shoreline	APTS	Issued	22	2152 N 185TH ST	Echo Lake	Albert Einstein	Shorewood
128	219 NE 185th St Townhomes	Shoreline	TWNH	Applied	7	219 NE 185TH ST	Meridian Park	Albert Einstein	Shorewood
23	332 NE 149th St Apartments	Shoreline	APTS	Pre-Applied	340	332 NE 149TH ST	Briarcrest	Kellogg	Shorecrest
173	358 Degrees Apartments	Shoreline	APTS	Issued	48	14550 WESTMINSTER WAY N	Parkwood	Albert Einstein	Shorewood

Multi-Family Projects

MFMapID	MFPmtTitle	MJJurisJuris	MFPmtSubType	MFCurrentStatus	MFNNumUnits	MFStreetAddr	SA_Elem	SA_JHigh	SA_High
172	358 Degrees Townhomes	Shoreline	TWNH	Issued	36	14550 WESTMINSTER WAY N	Parkwood	Albert Einstein	Shorewood
161	5 Degrees Townhomes	Shoreline	TWNH	Issued	70	14704 MERIDIAN AVE N	Parkwood	Albert Einstein	Shorewood
17	516 NE 145th St Apartments	Shoreline	APTS	Applied	12	516 NE 145TH ST	Briarcrest	Kellogg	Shorecrest
31	519 NE 155th St Townhomes	Shoreline	TWNH	Pre-Applied	5	519 NE 155TH ST	Briarcrest	Kellogg	Shorecrest
189	5th Ave Four Condominiums	Shoreline	TWNH	Issued	4	15606 5TH AVE NE	Ridgecrest	Kellogg	Shorecrest
32	605 NE 155th St Townhomes	Shoreline	TWNH	Applied	6	605 NE 155TH ST	Briarcrest	Kellogg	Shorecrest
205	811 NE 188th St Apartments	Shoreline	APTS	Applied	305	811 NE 188TH ST	Ridgecrest	Kellogg	Shorecrest
162	812 N 145th St Townhomes	Shoreline	TWNH	Pre-Applied	23	812 N 145TH ST	Parkwood	Albert Einstein	Shorewood
120	903 N 167th St Townhomes	Shoreline	TWNH	Issued	3	903 N 167TH ST	Meridian Park	Albert Einstein	Shorewood
72	922 N 200th St Townhomes	Shoreline	TWNH	Issued	6	922 N 200TH ST	Echo Lake	Albert Einstein	Shorewood
24	AAA 149th Shoreline Apartments	Shoreline	APTS	Issued	252	345 NE 149TH ST	Briarcrest	Kellogg	Shorecrest
3	Alta Apartments	Shoreline	APTS	Applied	228	17712 15TH AVE NE	Briarcrest	Kellogg	Shorecrest
55	Canopy Apartments Phase 1	Shoreline	APTS	Issued	315	18815 AURORA AVE N	Echo Lake	Albert Einstein	Shorewood
54	Canopy Apartments Phase 2	Shoreline	APTS	Issued	161	18551 AURORA AVE N	Echo Lake	Albert Einstein	Shorewood
11	Grand Peaks Apartments	Shoreline	APTS	Applied	300	14540 5TH AVE NE	Briarcrest	Kellogg	Shorecrest
198	Kinect at Shoreline Apartments	Shoreline	APTS	Applied	240	18553 8TH AVE NE	Ridgecrest	Kellogg	Shorecrest
9	LFP Lake View Condos	Lake Forest Park	APTS	Applied	16	14727 35TH AVE NE	Briarcrest	Kellogg	Shorecrest
111	Luxe Apartments	Shoreline	APTS	Applied	386	18005 AURORA AVE N	Meridian Park	Albert Einstein	Shorewood
118	Midvale Village Apartments	Shoreline	APTS	Issued	210	18110 MIDVALE AVE N	Meridian Park	Albert Einstein	Shorewood
114	Modera Apartments	Shoreline	APTS	Applied	399	17802 LINDEN AVE N	Meridian Park	Albert Einstein	Shorewood
26	Paramount Phase 1 Apartments	Shoreline	APTS	Issued	35	304 NE 152ND ST	Briarcrest	Kellogg	Shorecrest
27	Paramount Phase 2 Apartments	Shoreline	APTS	Applied	115	305 NE 152ND ST	Briarcrest	Kellogg	Shorecrest
44	Quinn Apartments	Shoreline	APTS	Issued	227	20057 BALLINGER WAY NE	Brookside	Kellogg	Shorecrest
183	Rudd Shoreline Apartments	Shoreline	APTS	Applied	28	18005 12TH AVE NE	Ridgecrest	Kellogg	Shorecrest
129	Scout Townhomes	Shoreline	TWNH	Issued	16	1319 N 185TH ST	Meridian Park	Albert Einstein	Shorewood
29	Shoreline 155th Townhomes	Shoreline	TWNH	Applied	64	301 NE 155TH ST	Briarcrest	Kellogg	Shorecrest
200	Shoreline 185 Apartments	Shoreline	APTS	Applied	197	18910 8TH AVE NE	Ridgecrest	Kellogg	Shorecrest
146	Shoreline Place	Shoreline	APTS	Applied	1358	15711 AURORA AVE N	Parkwood	Albert Einstein	Shorewood
12	The Burl Apartments	Shoreline	APTS	Applied	172	14802 5TH AVE NE	Briarcrest	Kellogg	Shorecrest
169	The Line Apartments	Shoreline	APTS	Issued	241	132 NE 145TH ST	Parkwood	Albert Einstein	Shorewood
163	Towns on 145th	Shoreline	TWNH	Issued	81	2356 N 145TH ST	Parkwood	Albert Einstein	Shorewood
117	Vail 2 Apartments	Shoreline	APTS	Issued	215	18004 MIDVALE AVE N	Meridian Park	Albert Einstein	Shorewood
166	Zinnia Apartments	Shoreline	APTS	Issued	299	2300 N 147TH ST	Parkwood	Albert Einstein	Shorewood
				Total	10072				

Single-Family Projects

SFMapID	SFPmtTitle	SFJurisJuris	SFPmtSubType	SFCurrentStatus	MyStat	SFNumUnits	SFStreetAddr	SA_Elem	SA_JHigh	SA_High
159	Linden Investment Short Plat	Shoreline	SS	Applied	Applied	4	16344 LINDEN AVE N	Parkwood	Albert Einstein	Shorewood
84	Linder Short Plat	Lake Forest Park	SS	Applied	Applied	3	19706 30TH AVE NE	Lake Forest Park	Kellogg	Shorecrest
91	Misic Short Plat	Lake Forest Park	SS	Applied	Applied	2	5104 NE 187TH ST	Lake Forest Park	Kellogg	Shorecrest
42	Rinehart Short Plat	Lake Forest Park	SS	Applied	Applied	2	17628 25TH AVE NE	Brookside	Kellogg	Shorecrest
194	Taylor Short Plat	Shoreline	SS	Applied	Applied	2	16721 8TH AVE NE	Ridgecrest	Kellogg	Shorecrest
95	Trillium Short Plat	Lake Forest Park	SS	Applied	Applied	2	5339 NE 198TH PL	Lake Forest Park	Kellogg	Shorecrest
16	Wang-Smith Short Plat	Lake Forest Park	SS	Applied	Applied	3	15545 LAKE SHORE BLVD NE	Briarcrest	Kellogg	Shorecrest
8	14721 32nd Ave NE Plat	Shoreline	SUB	Pre-Applied	Prelim Approval	21	14721 32ND AVE NE	Briarcrest	Kellogg	Shorecrest
174	15051 Westminster Way N Short Plat	Shoreline	SS	Pre-Applied	Prelim Approval	5	15051 WESTMINSTER WAY N	Parkwood	Albert Einstein	Shorewood
192	Edison Estates	Shoreline	SUB	Issued	Selling Homes	16	16543 8TH AVE NE	Ridgecrest	Kellogg	Shorecrest

Consultant Background and Experience

Dr. Kendrick was the demographer for the Seattle Public schools from 1990 to 1997. In that capacity he provided enrollment projections to facilitate staffing and facilities planning and helped with the management of the student assignment system. He also provided analysis of the relationship between demographics and test scores.

Since 1997 he has worked as a consultant providing demographic analysis and enrollment projections for local school districts. Over the past 25 years his clients have included the following Districts: Auburn, Bainbridge Island, Bellingham, Bellevue, Bethel, Bremerton, Central Kitsap, Edmonds, Enumclaw, Federal Way, Marysville, Mercer Island, Monroe, North Kitsap, Olympia, Renton, Seattle, South Kitsap, Shoreline, Snoqualmie Valley, Sumner, and Tukwila. He also does annual enrollment projection work for the Everett, Highline, Mukilteo, Northshore, and Tacoma School Districts. He has worked in all four counties of the Puget Sound and is familiar with the different trends and patterns across the region.

