

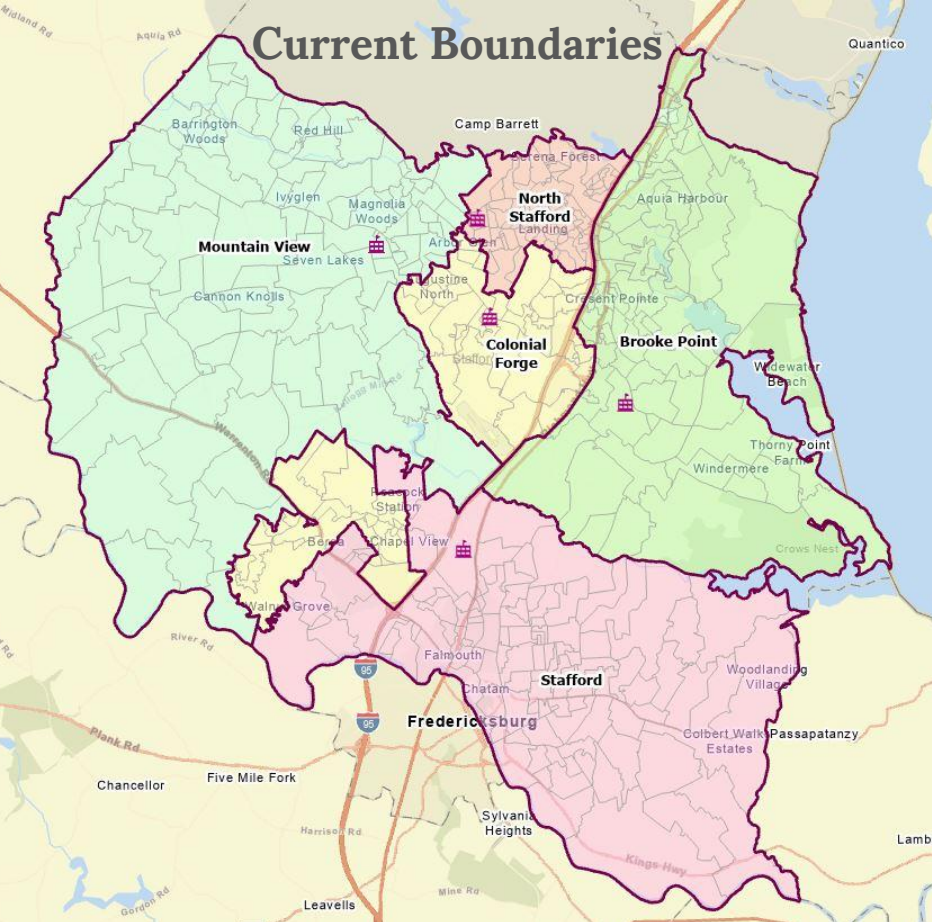
Scenario A



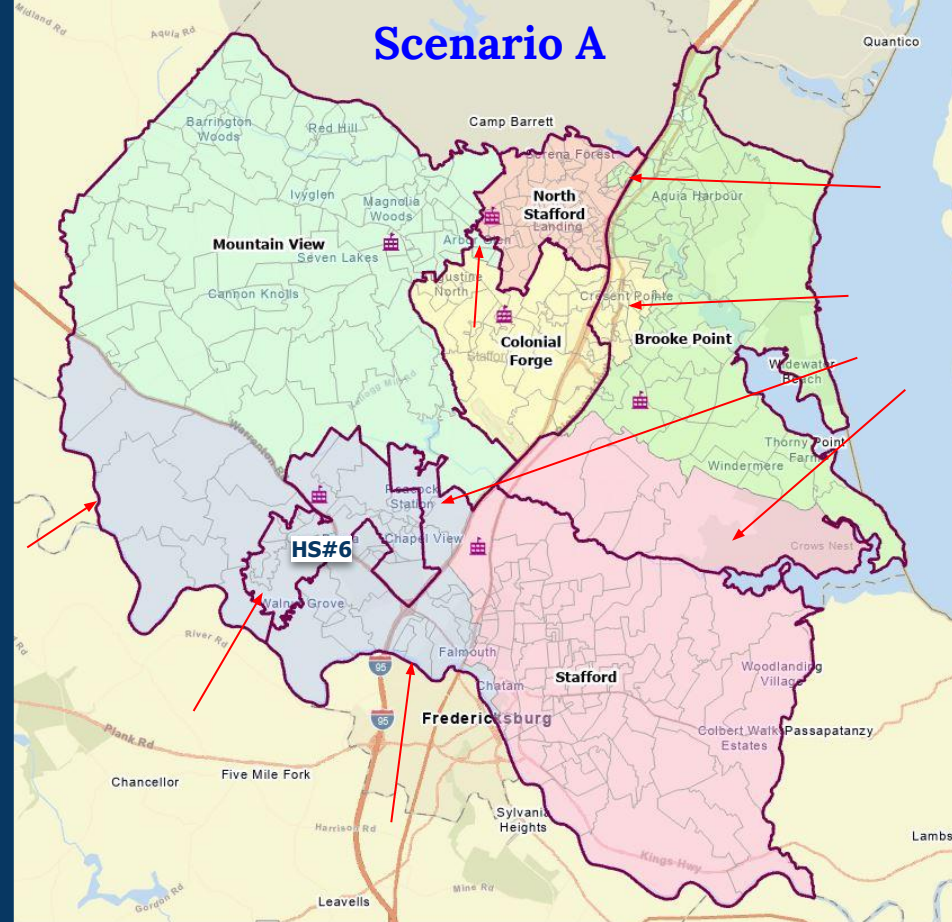
Stafford County Public Schools

Inspire | Empower | Excel

Current Boundaries



Scenario A



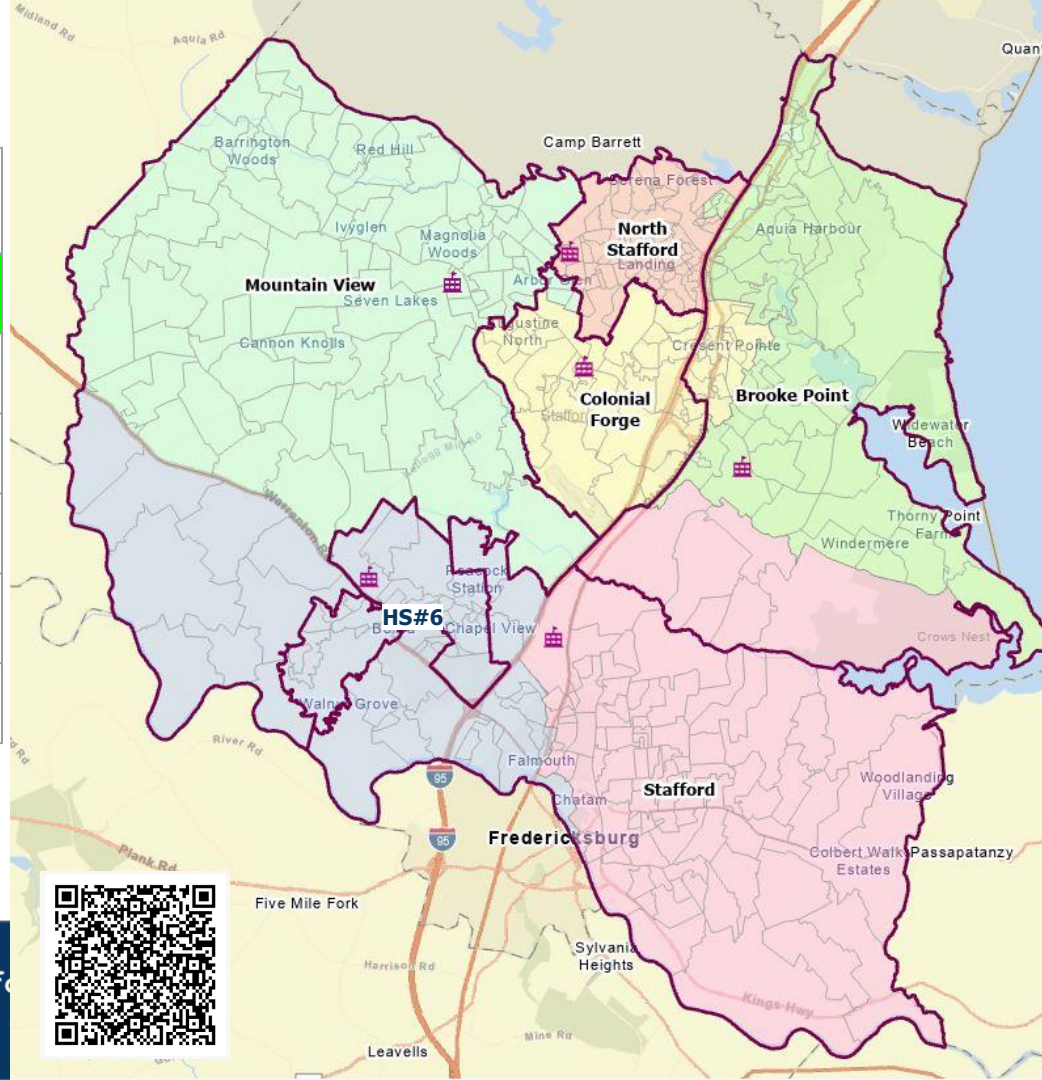
Stafford County Public Schools

Inspire | Empower | Excel

Scenario A

FRL = Free & Reduced Lunch
b/c = Boundary Change

High School	Capacity Before b/c 2026	Capacity After b/c 2026	Capacity After b/c 2029	Capacity After b/c 2032	FRL% Before b/c	FRL% After b/c
North Stafford	105%	85%	91%	105%	57%	56%
Brooke Point	108%	88%	94%	106%	51%	52%
Colonial Forge	98%	88%	90%	99%	37%	38%
Mountain View	99%	89%	91%	93%	37%	38%
Stafford	108%	90%	92%	98%	49%	46%
HS#6	N/A	77%	88%	100%	N/A	47%



Scenario A - Reassigned Student Estimates for 2027

Scenario A	Brooke Point HS	Colonial Forge HS	HS#6	Mountain View HS	North Stafford HS	Stafford HS	Grand Total
Brooke Point HS	1,624	640				78	2,341
Colonial Forge HS		1,222	847	113			2,183
Mountain View HS			239	1,812			2,051
North Stafford HS	295				1,741		2,035
Stafford HS			609			1,801	2,410
Estimated Students in 2027	1,918	1,862	1,695	1,926	1,741	1,878	11,020

How to read this chart:

- Brooke Point HS is estimated to have 1,624 in-boundary students, plus 295 students from North Stafford, for a grand total of 1,918 students.
- Colonial Forge HS is estimated to have 1,222 in-boundary students, plus 640 students from Brooke Point, for a grand total of 1,862 students.
- HS#6 is estimated to receive 847 students from Colonial Forge, plus 239 students from Mountain View, plus 609 students from Stafford, for a grand total of 1,695 students.

Note: Totals are subject to rounding error.



Stafford County Public Schools

Inspire | Empower | Excel

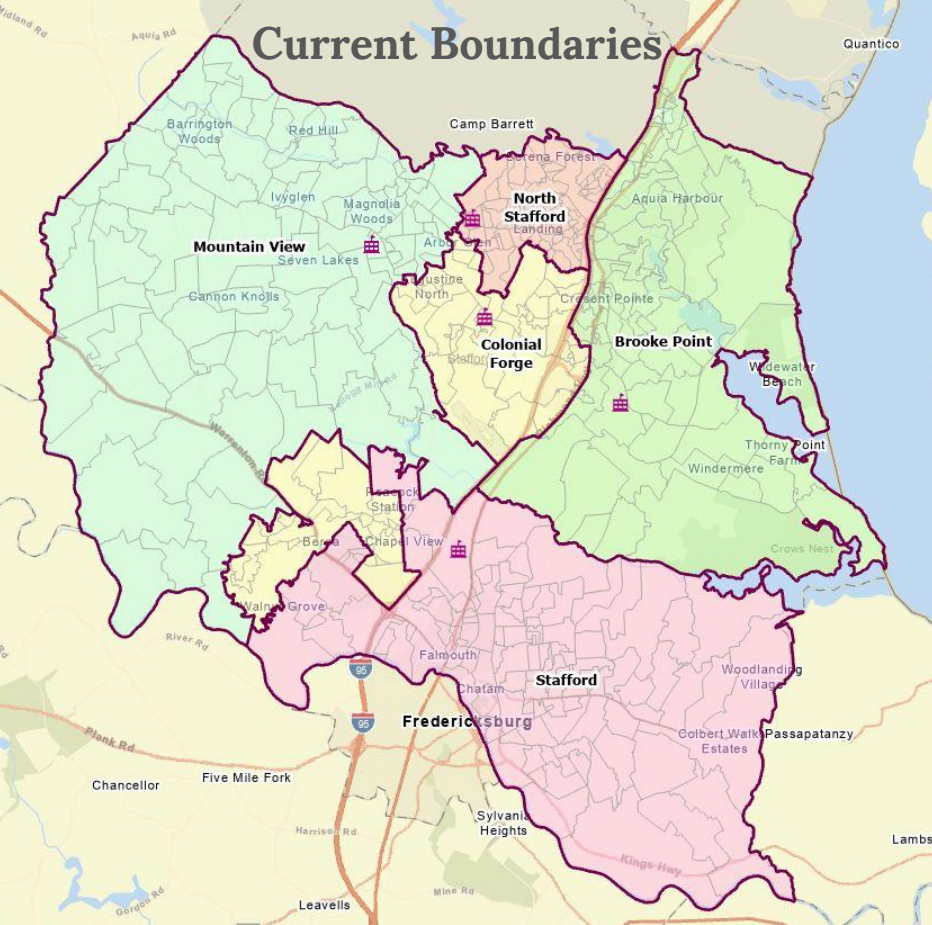
Scenario B



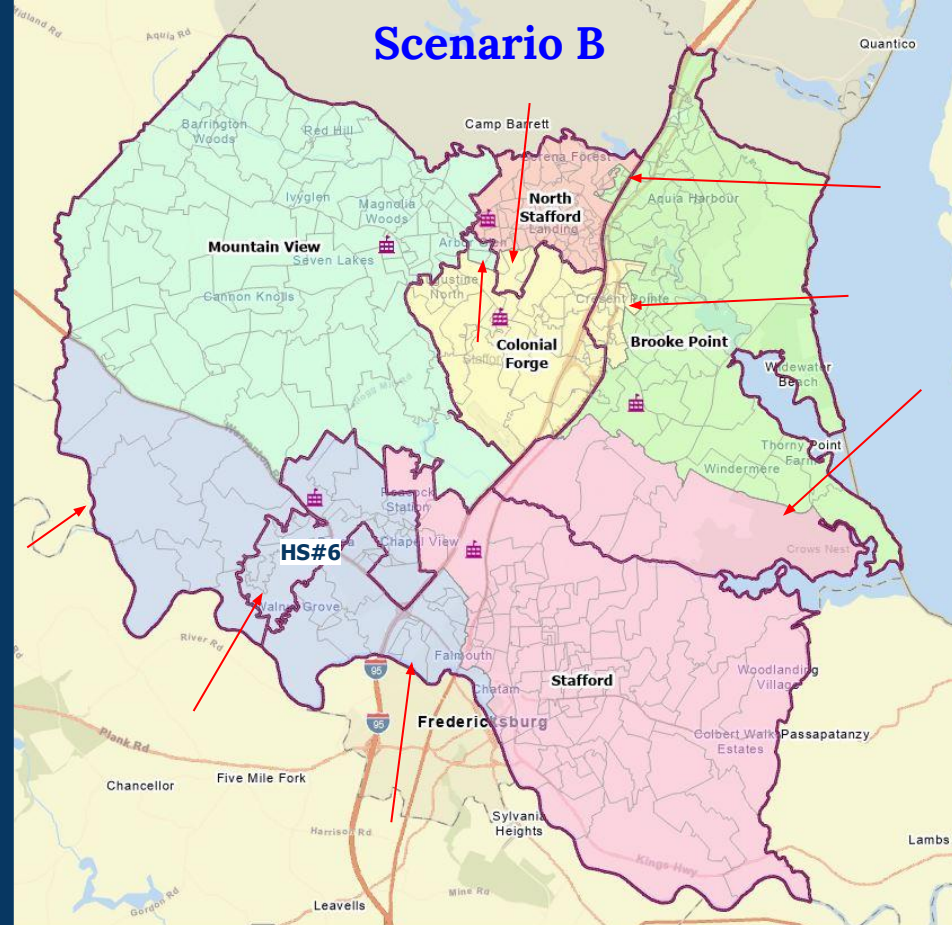
Stafford County Public Schools

Inspire | Empower | Excel

Current Boundaries



Scenario B



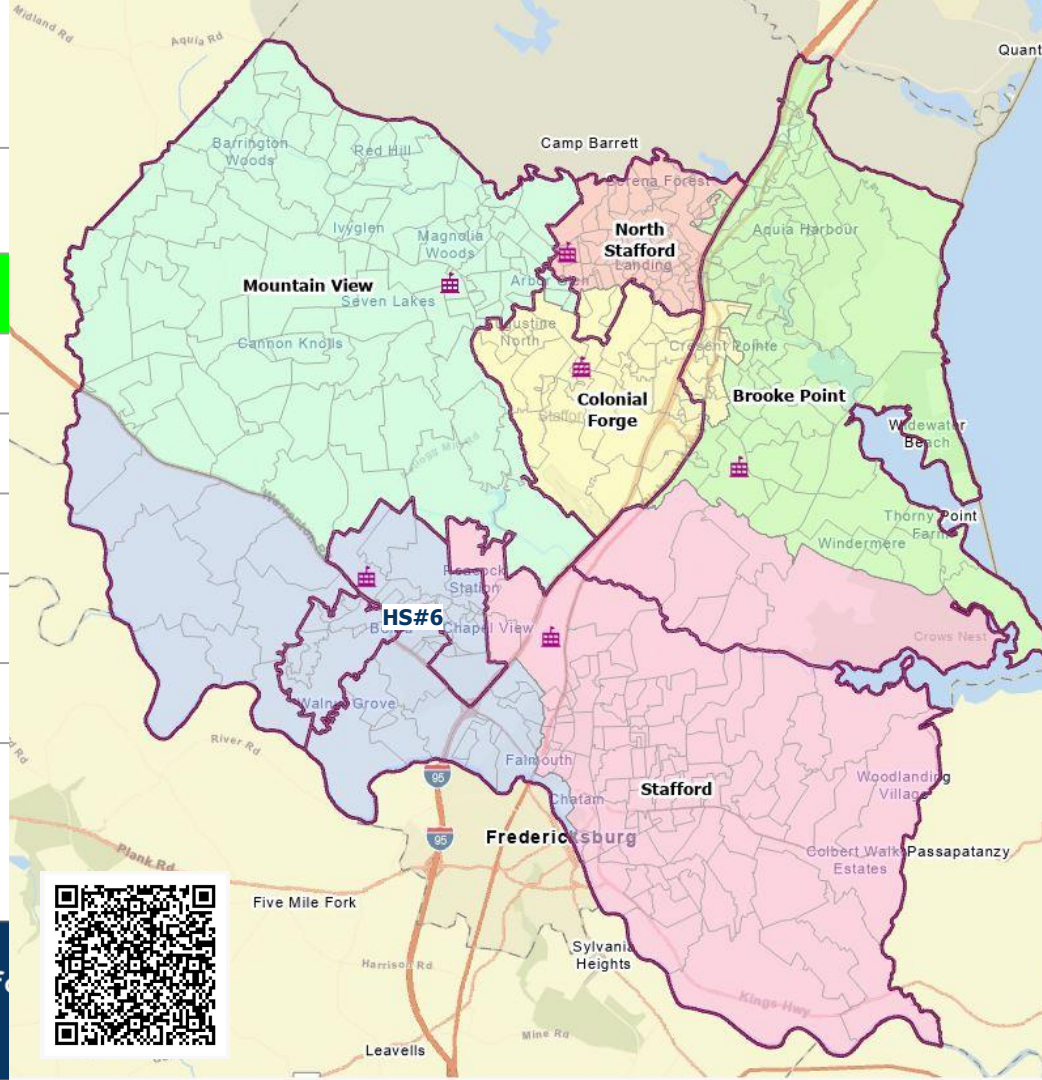
Stafford County Public Schools

Inspire | Empower | Excel

Scenario B

FRL = Free & Reduced Lunch
b/c = Boundary Change

High School	Capacity Before b/c 2026	Capacity After b/c 2026	Capacity After b/c 2029	Capacity After b/c 2032	FRL% Before	FRL% After
North Stafford	105%	88%	92%	107%	57%	59%
Brooke Point	108%	85%	93%	104%	51%	49%
Colonial Forge	98%	88%	91%	98%	37%	38%
Mountain View	99%	89%	91%	93%	37%	38%
Stafford	108%	92%	95%	101%	49%	46%
HS#6	N/A	75%	86%	96%	N/A	47%



Scenario B - Reassigned Student Estimates for 2027

Scenario B	Brooke Point HS	Colonial Forge HS	HS#6	Mountain View HS	North Stafford HS	Stafford HS	Grand Total
Brooke Point HS	1,732	532				78	2,341
Colonial Forge HS		1,222	847	113			2,183
Mountain View HS			239	1,812			2,051
North Stafford HS	127	114			1,794		2,035
Stafford HS			570			1,840	2,410
Estimated Students in 2027	1,859	1,868	1,656	1,926	1,794	1,917	11,020

How to read this chart:

- Brooke Point HS is estimated to have 1,732 in-boundary students, plus 127 students from North Stafford, for a grand total of 1,859 students.
- Colonial Forge HS is estimated to have 1,222 in-boundary students, plus 532 students from Brooke Point, plus 114 students from North Stafford for a grand total of 1,868 students.
- HS#6 is estimated to receive 847 students from Colonial Forge, plus 239 students from Mountain View, plus 570 students from Stafford, for a grand total of 1,656 students.

Note: Totals are subject to rounding error.



Stafford County Public Schools

Inspire | Empower | Excel

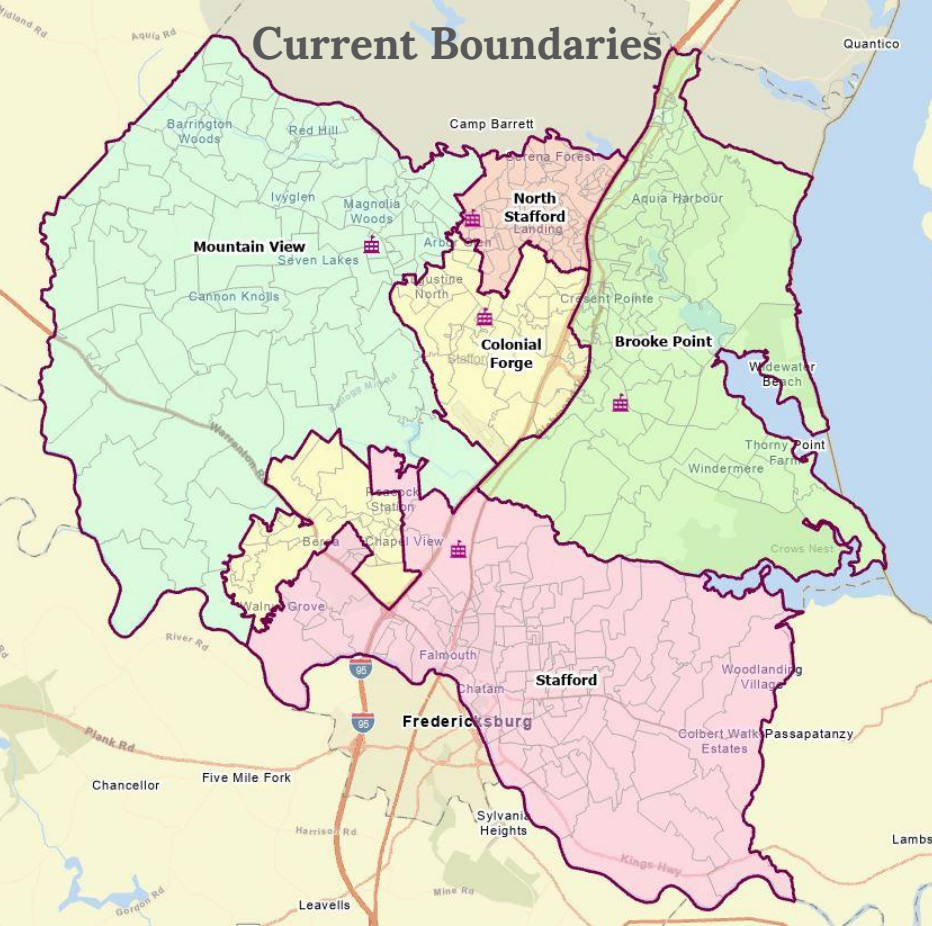
Scenario C



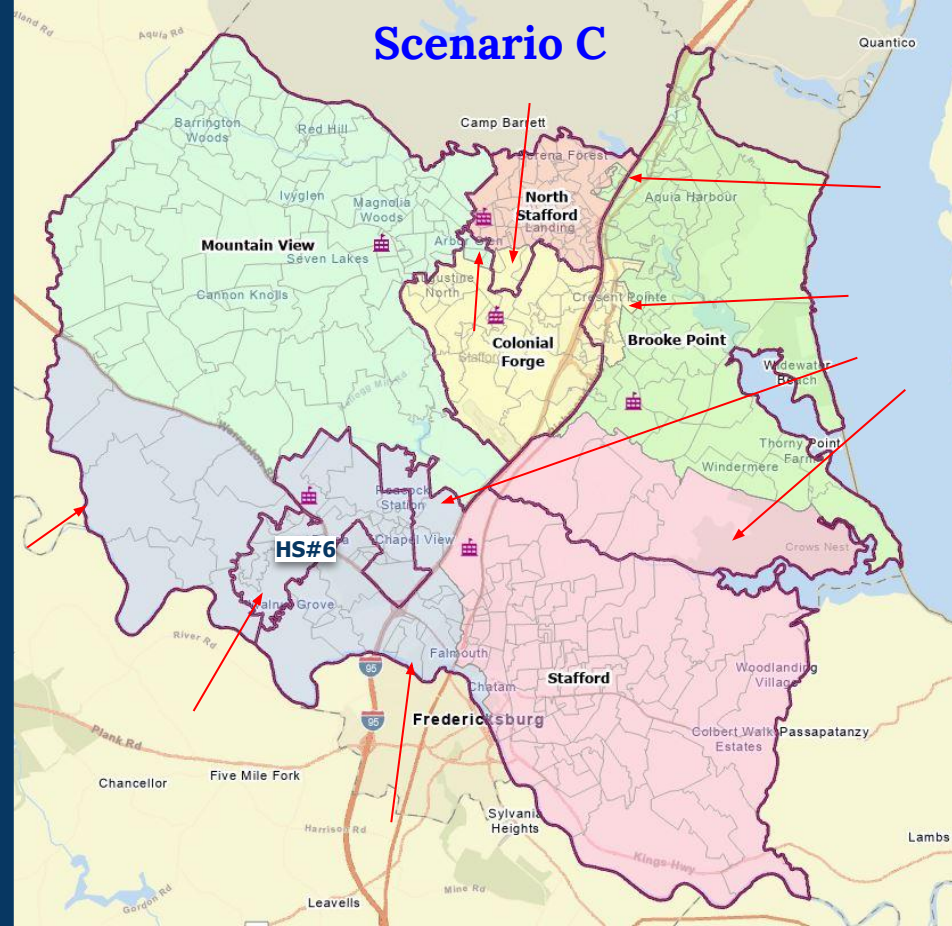
Stafford County Public Schools

Inspire | Empower | Excel

Current Boundaries



Scenario C



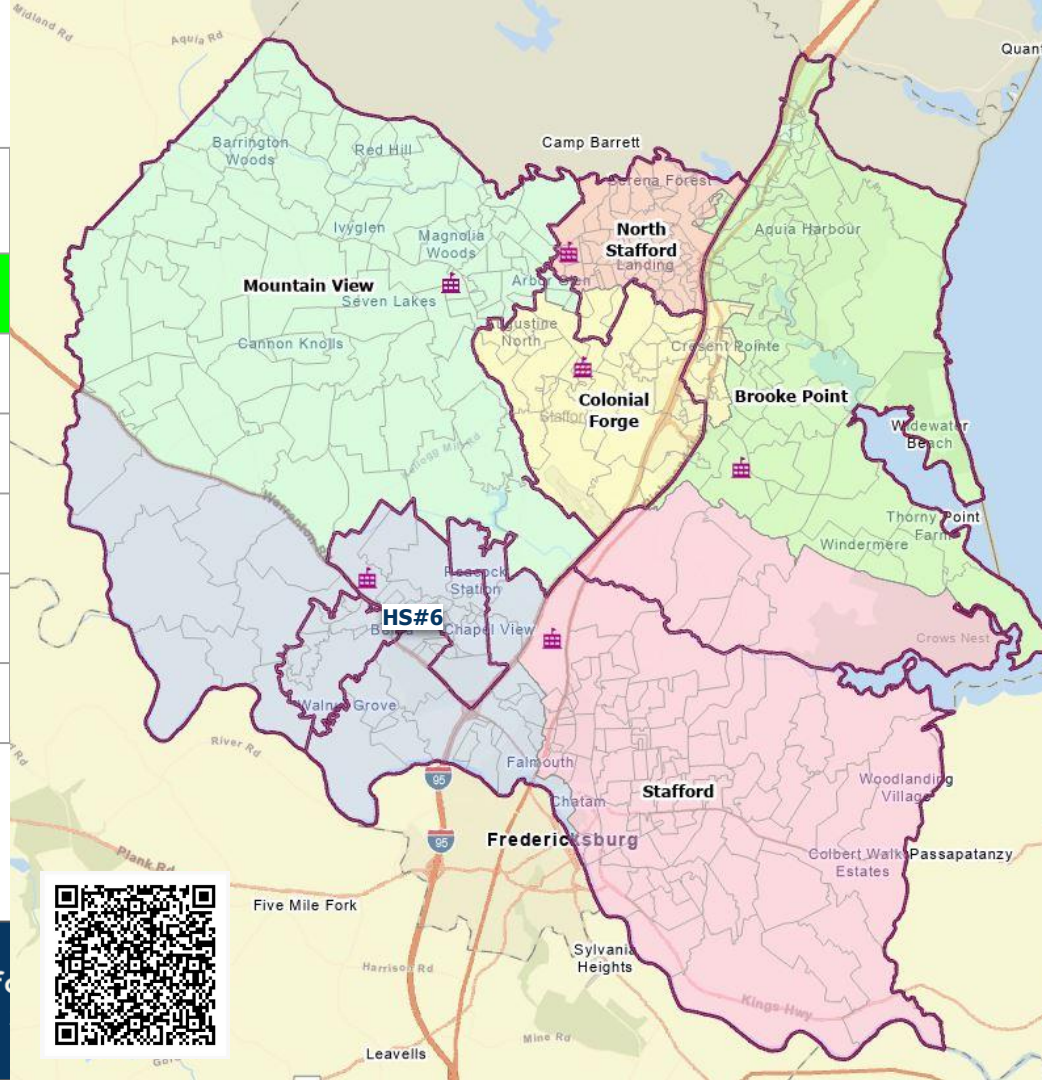
Stafford County Public Schools

Inspire | Empower | Excel

Scenario C

FRL = Free & Reduced Lunch
b/c = Boundary Change

High School	Capacity Before b/c 2026	Capacity After b/c 2026	Capacity After b/c 2029	Capacity After b/c 2032	FRL% Before	FRL% After
North Stafford	105%	88%	92%	107%	57%	59%
Brooke Point	108%	85%	93%	104%	51%	49%
Colonial Forge	98%	88%	91%	98%	37%	38%
Mountain View	99%	89%	91%	93%	37%	38%
Stafford	108%	91%	93%	99%	49%	46%
HS#6	N/A	77%	87%	98%	N/A	47%



Scenario C - Reassigned Student Estimates for 2027

Scenario C	Brooke Point HS	Colonial Forge HS	HS#6	Mountain View HS	North Stafford HS	Stafford HS	Grand Total
Brooke Point HS	1,732	532				78	2,341
Colonial Forge HS		1,222	847	113			2,183
Mountain View HS			239	1,812			2,051
North Stafford HS	127	114			1,794		2,035
Stafford HS			596			1,813	2,410
Estimated Students in 2027	1,859	1,868	1,682	1,926	1,794	1,891	11,020

How to read this chart:

- Brooke Point HS is estimated to have 1,732 in-boundary students, plus 127 students from North Stafford, for a grand total of 1,859 students.
- Colonial Forge HS is estimated to have 1,222 in-boundary students, plus 532 students from Brooke Point, plus 114 students from North Stafford, for a grand total of 1,868 students.
- HS#6 is estimated to receive 847 students from Colonial Forge, plus 239 students from Mountain View, plus 596 students from Stafford, for a grand total of 1,682 students.

Note: Totals are subject to rounding error.



Stafford County Public Schools

Inspire | Empower | Excel

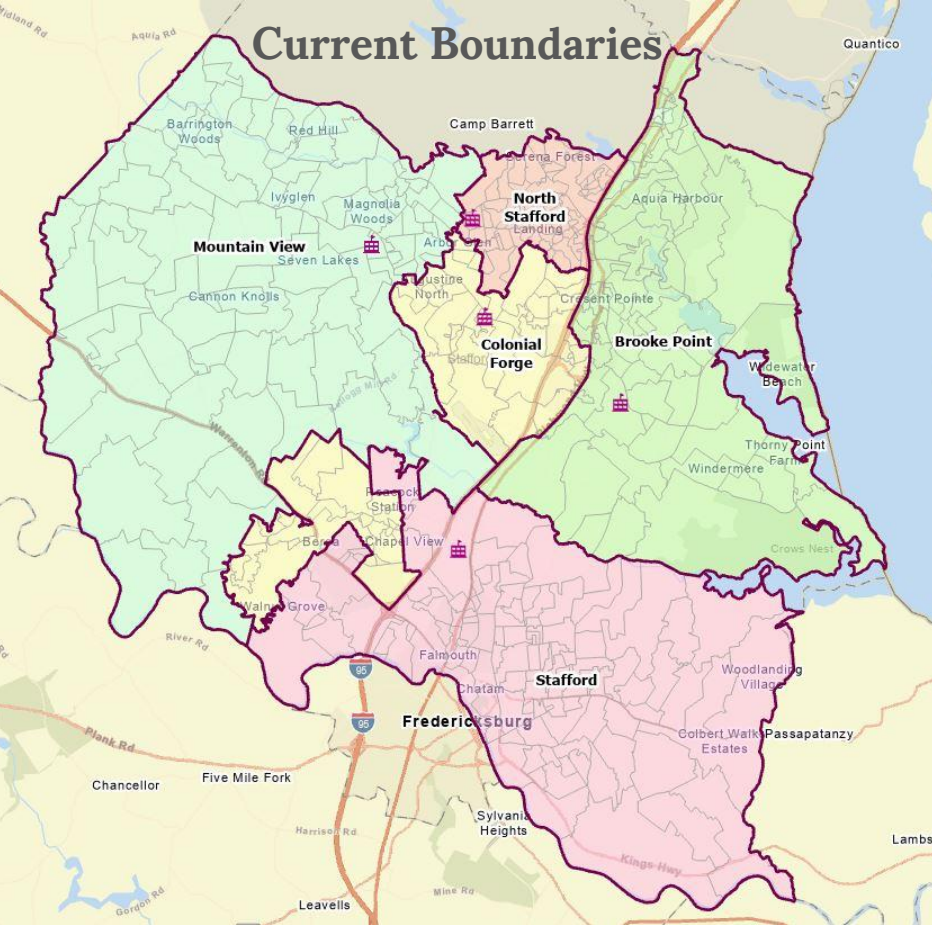
Scenario D



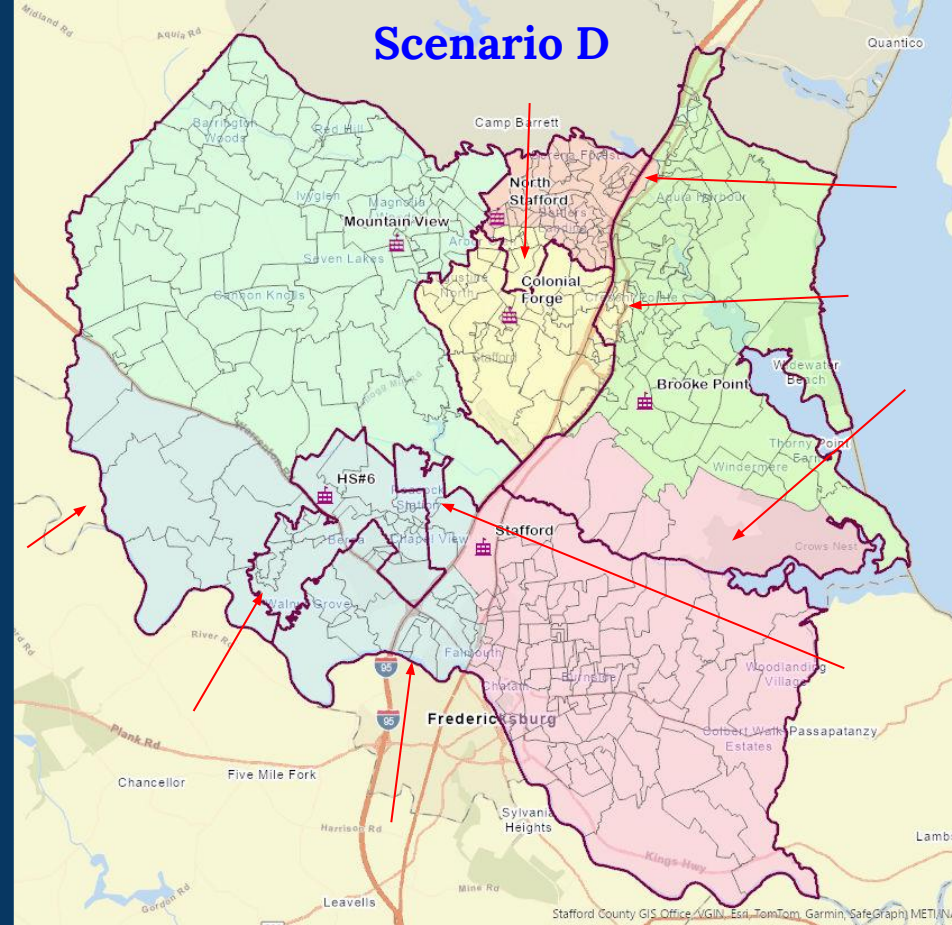
Stafford County Public Schools

Inspire | Empower | Excel

Current Boundaries



Scenario D



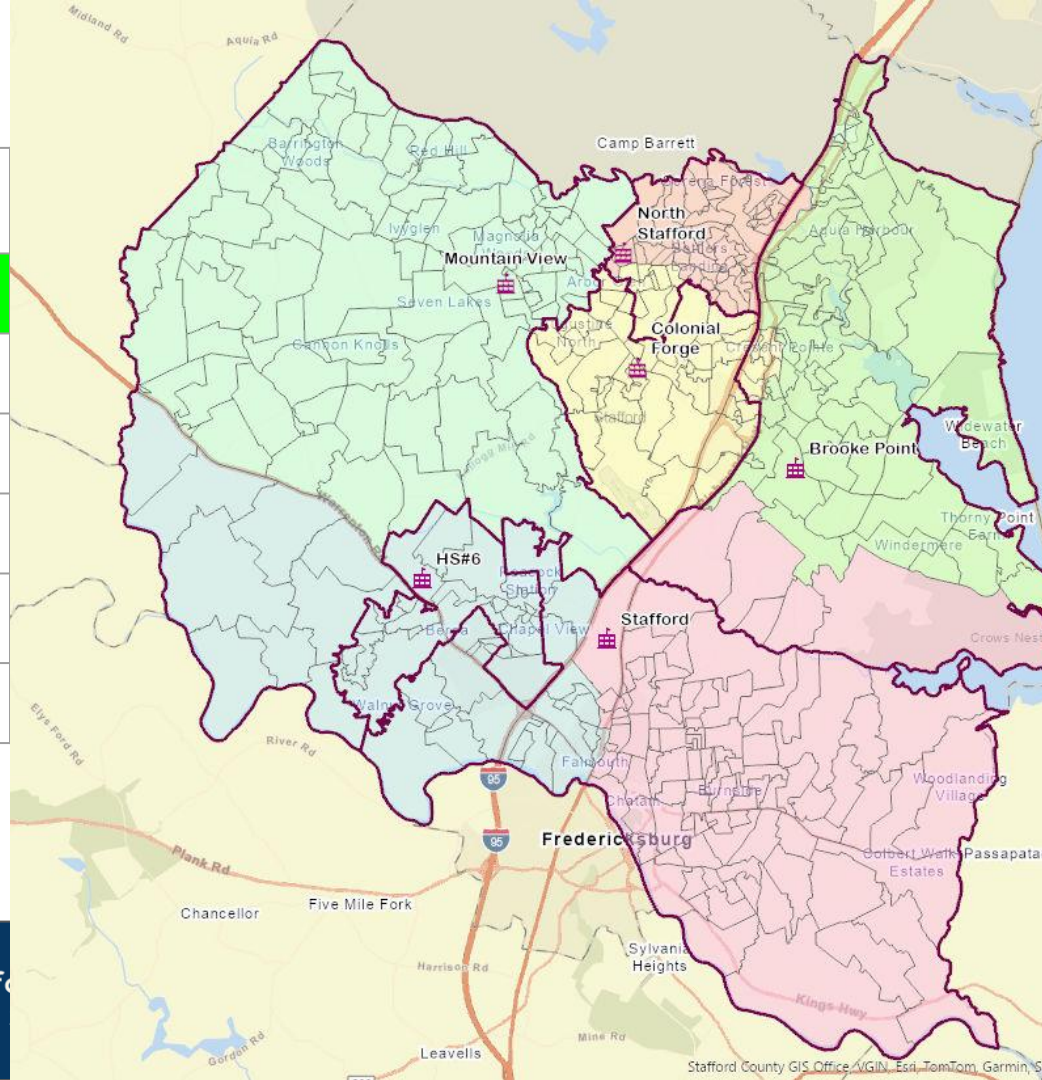
Stafford County Public Schools

Inspire | Empower | Excel

Scenario D

FRL = Free & Reduced Lunch
b/c = Boundary Change

High School	Capacity Before b/c 2026	Capacity After b/c 2026	Capacity After b/c 2029	Capacity After b/c 2032	FRL% Before	FRL% After
North Stafford	105%	86%	92%	108%	57%	61%
Brooke Point	108%	89%	92%	104%	51%	48%
Colonial Forge	98%	93%	96%	102%	37%	37%
Mountain View	99%	84%	85%	88%	37%	39%
Stafford	108%	89%	92%	97%	49%	47%
HS#6	N/A	77%	88%	100%	N/A	48%



Scenario D - Reassigned Student Estimates for 2027

Scenario D	Brooke Point HS	Colonial Forge HS	HS#6	Mountain View HS	North Stafford HS	Stafford HS	Grand Total
Brooke Point HS	1,893	350			46	53	2,341
Colonial Forge HS		1,336	847				2,183
Mountain View HS			239	1,812			2,051
North Stafford HS		309			1,726		2,035
Stafford HS			609			1,801	2,410
Grand Total	1,893	1,994	1,695	1,812	1,772	1,853	11,020

How to read this chart:

- Brooke Point HS is estimated to have 1,893 in-boundary students, for a grand total of 1,893 students.
- Colonial Forge HS is estimated to have 1,336 in-boundary students, plus 350 students from Brooke Point, plus 309 students from North Stafford, for a grand total of 1,994 students.
- HS#6 is estimated to receive 847 students from Colonial Forge, plus 239 students from Mountain View, plus 609 students from Stafford, for a grand total of 1,695 students.

Note: Totals are subject to rounding error.



Stafford County Public Schools

Inspire | Empower | Excel

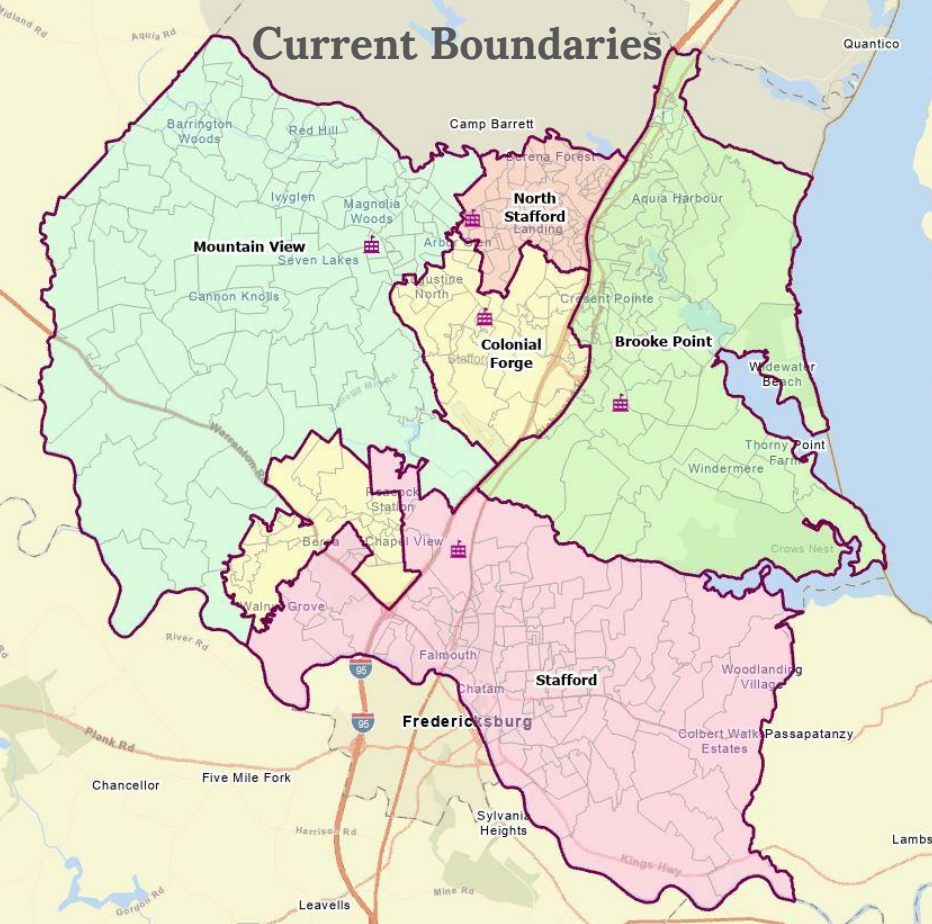
Scenario E



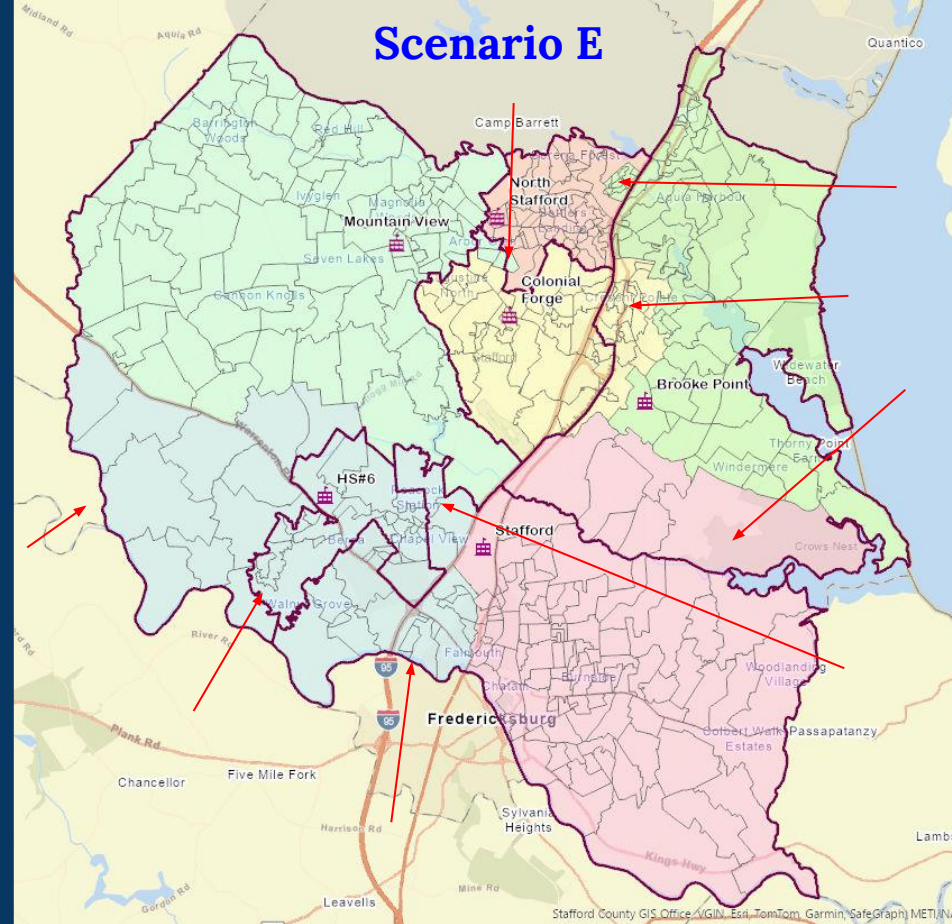
Stafford County Public Schools

Inspire | Empower | Excel

Current Boundaries



Scenario E



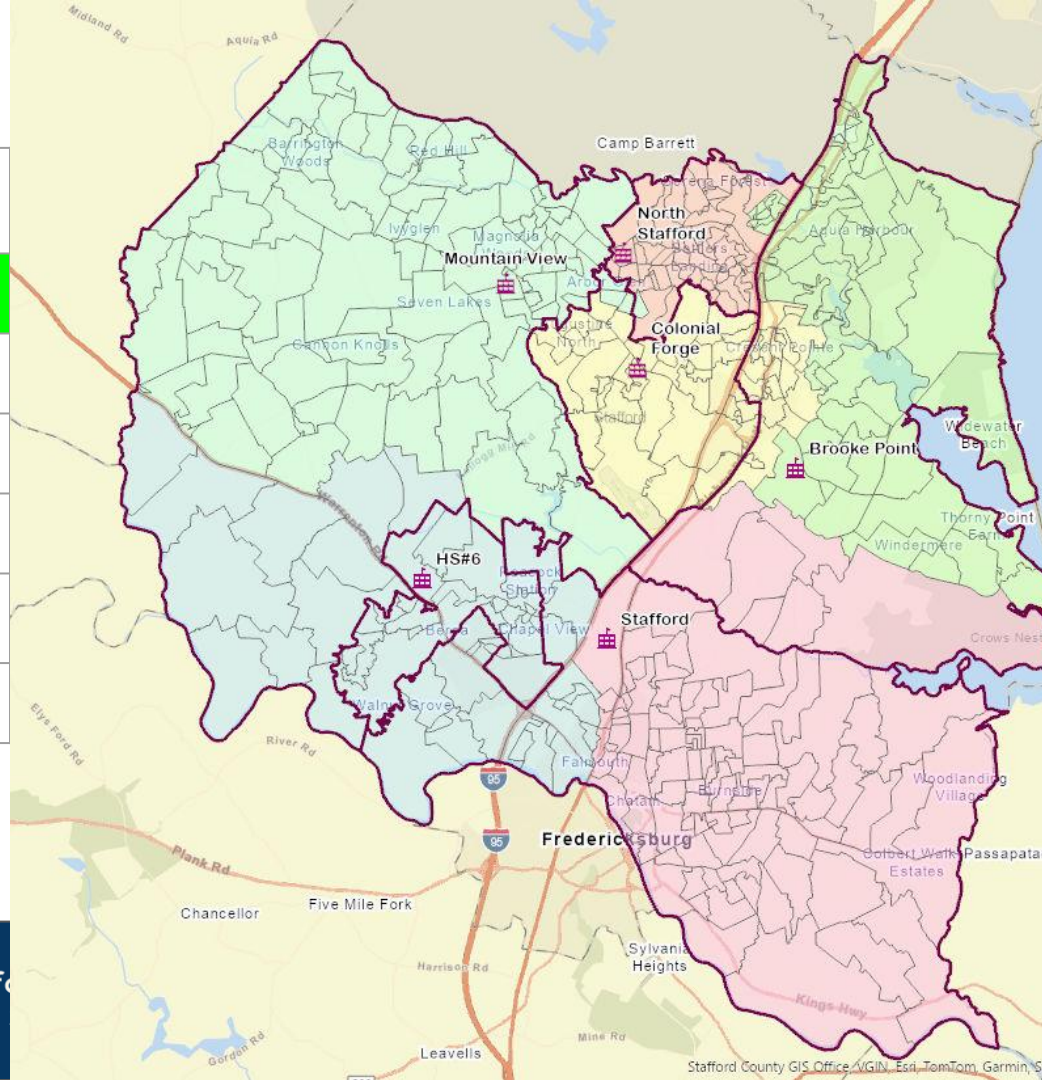
Stafford County Public Schools

Inspire | Empower | Excel

Scenario E

FRL = Free & Reduced Lunch
b/c = Boundary Change

High School	Capacity Before b/c 2026	Capacity After b/c 2026	Capacity After b/c 2029	Capacity After b/c 2032	FRL% Before	FRL% After
North Stafford	105%	80%	85%	97%	57%	54%
Brooke Point	108%	88%	94%	106%	51%	54%
Colonial Forge	98%	91%	94%	103%	37%	38%
Mountain View	99%	89%	91%	92%	37%	38%
Stafford	108%	91%	93%	99%	49%	46%
HS#6	N/A	79%	89%	101%	N/A	47%



Scenario E - Reassigned Student Estimates for 2027

Scenario E	Brooke Point HS	Colonial Forge HS	HS#6	Mountain View HS	North Stafford HS	Stafford HS	Grand Total
Brooke Point HS	1,547	716				78	2341
Colonial Forge HS		1,222	847	113			2183
Mountain View HS			271	1,780			2051
North Stafford HS	376			30	1,629		2035
Stafford HS			596			1,813	2,410
Grand Total	1,923	1,939	1,715	1,923	1,629	1,891	11,020

How to read this chart:

- Brooke Point HS is estimated to have 1,547 in-boundary students, plus 376 from North Stafford, for a grand total of 1,923 students.
- Colonial Forge HS is estimated to have 1,222 in-boundary students, plus 716 students from Brooke Point, for a grand total of 1,939 students.
- HS#6 is estimated to receive 847 students from Colonial Forge, plus 271 students from Mountain View, plus 596 students from Stafford, for a grand total of 1,715 students

Note: Totals are subject to rounding error.



Stafford County Public Schools

Inspire | Empower | Excel

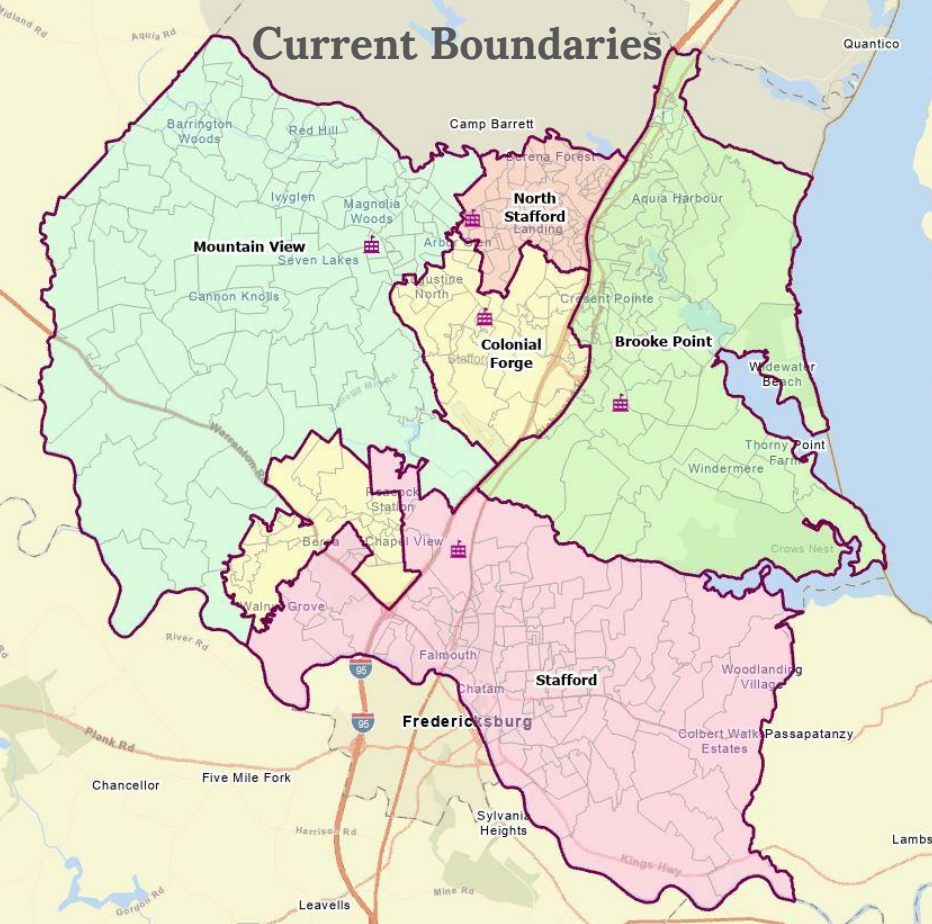
Scenario F



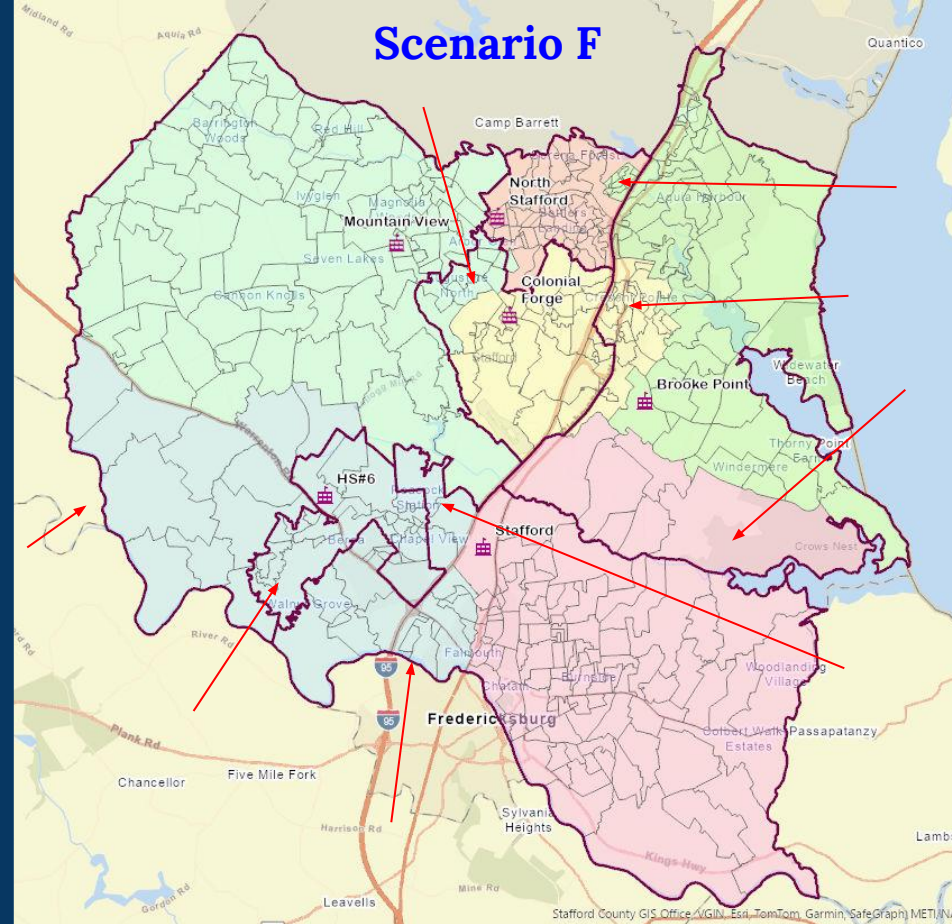
Stafford County Public Schools

Inspire | Empower | Excel

Current Boundaries



Scenario F



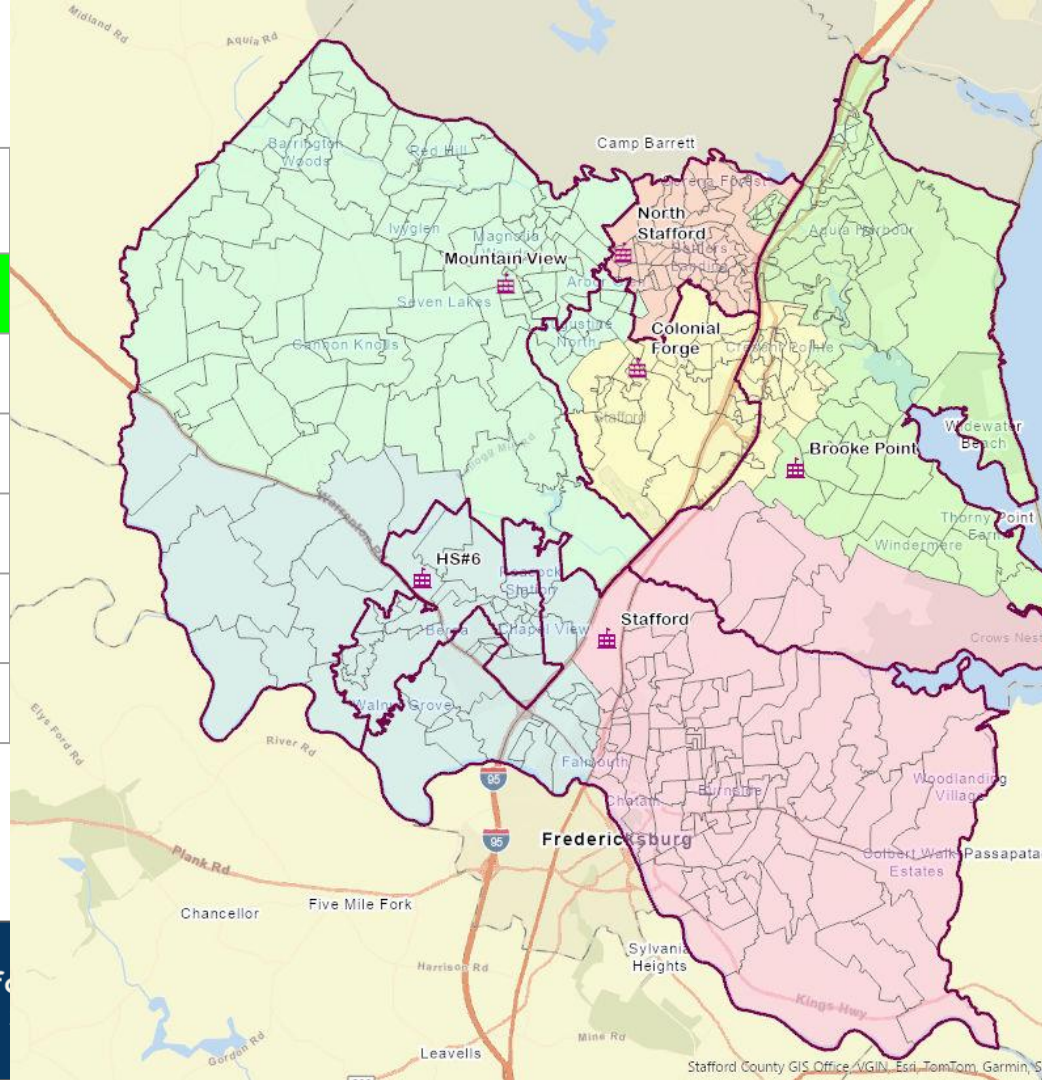
Stafford County Public Schools

Inspire | Empower | Excel

Scenario F

FRL = Free & Reduced Lunch
b/c = Boundary Change

High School	Capacity Before b/c 2026	Capacity After b/c 2026	Capacity After b/c 2029	Capacity After b/c 2032	FRL% Before	FRL% After
North Stafford	105%	80%	85%	97%	57%	54%
Brooke Point	108%	85%	90%	102%	51%	54%
Colonial Forge	98%	90%	94%	104%	37%	40%
Mountain View	99%	94%	95%	96%	37%	37%
Stafford	108%	91%	93%	99%	49%	46%
HS#6	N/A	79%	89%	101%	N/A	47%



Scenario F - Reassigned Student Estimates for 2027

Scenario F	Brooke Point HS	Colonial Forge HS	HS#6	Mountain View HS	North Stafford HS	Stafford HS	Grand Total
Brooke Point HS	1,473	790				78	2,341
Colonial Forge HS		1,116	847	219			2,183
Mountain View HS			271	1,780			2,051
North Stafford HS	376			30	1,629		2,035
Stafford HS			596			1,813	2,410
Grand Total	1,849	1,907	1,715	2,029	1,629	1,891	11,020

How to read this chart:

- Brooke Point HS is estimated to have 1,473 in-boundary students, plus 376 from North Stafford, for a grand total of 1,849 students.
- Colonial Forge HS is estimated to have 1,116 in-boundary students, plus 790 students from Brooke Point, for a grand total of 1,907 students.
- HS#6 is estimated to receive 847 students from Colonial Forge, plus 271 students from Mountain View, plus 596 students from Stafford, for a grand total of 1,715 students

Note: Totals are subject to rounding error.



Stafford County Public Schools

Inspire | Empower | Excel

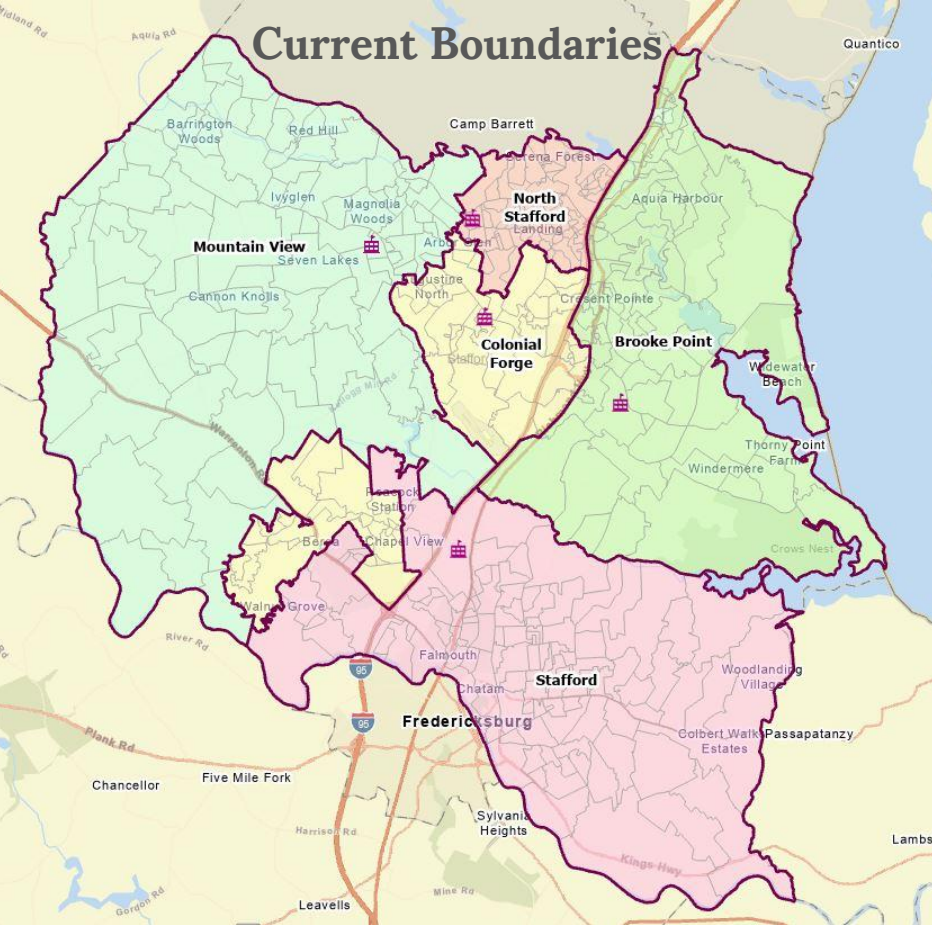
Scenario F1



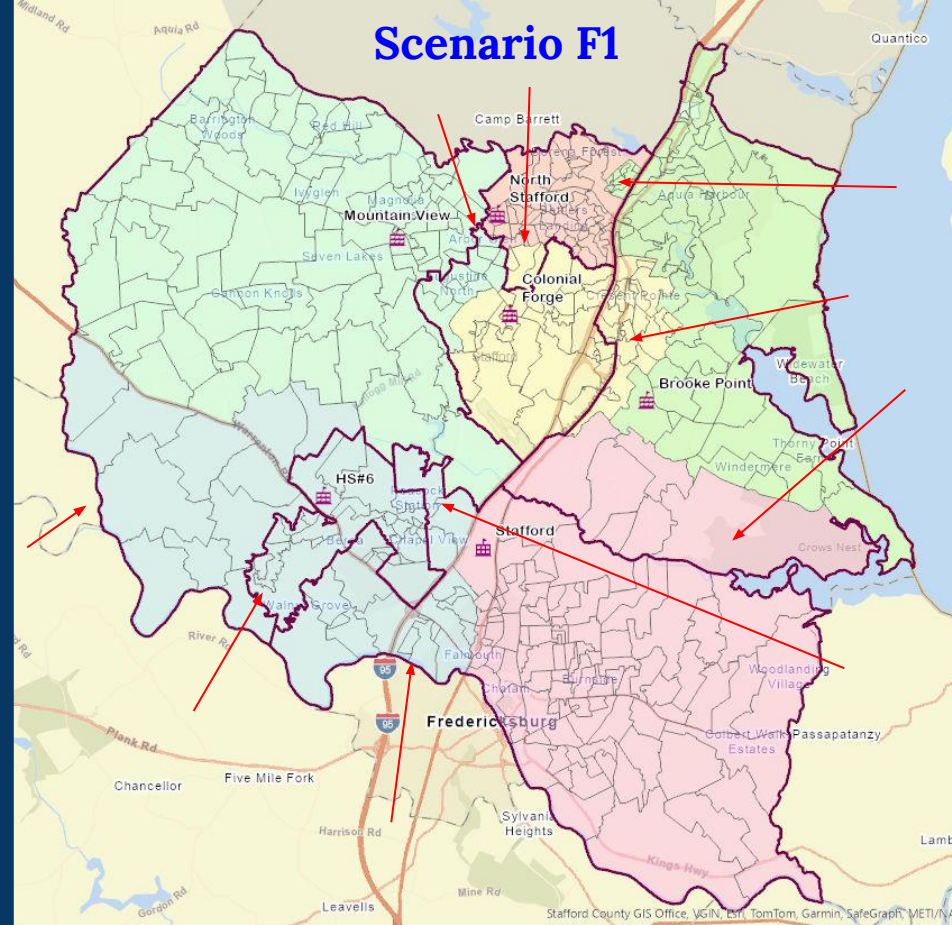
Stafford County Public Schools

Inspire | Empower | Excel

Current Boundaries



Scenario F1



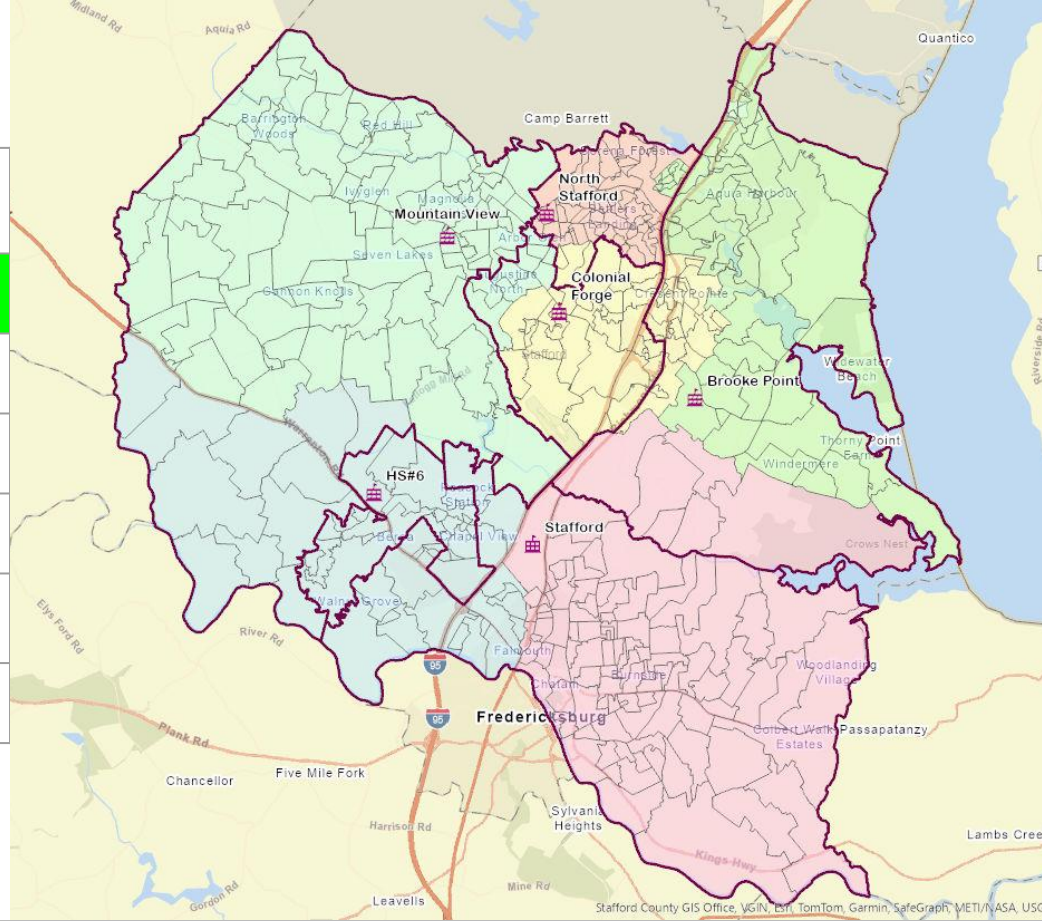
Stafford County Public Schools

Inspire | Empower | Excel

Scenario F1

FRL = Free & Reduced Lunch
b/c = Boundary Change

High School	Capacity Before b/c 2026	Capacity After b/c 2026	Capacity After b/c 2029	Capacity After b/c 2032	FRL% Before	FRL% After
North Stafford	105%	76%	80%	93%	57%	56%
Brooke Point	108%	85%	90%	102%	51%	54%
Colonial Forge	98%	95%	100%	109%	37%	40%
Mountain View	99%	92%	93%	94%	37%	37%
Stafford	108%	91%	93%	99%	49%	46%
HS#6	N/A	79%	89%	101%	N/A	47%



Scenario F1 - Reassigned Student Estimates for 2027

Scenario F	Brooke Point HS	Colonial Forge HS	HS#6	Mountain View HS	North Stafford HS	Stafford HS	Grand Total
Brooke Point HS	1,512	752				78	2,341
Colonial Forge HS		1,116	847	219			2,183
Mountain View HS			271	1,780			2,051
North Stafford HS	376	114			1,546		2,035
Stafford HS			596			1,813	2,410
Estimated Students in 2027	1,888	1,982	1,715	1,999	1,546	1,891	11,020

How to read this chart:

- Brooke Point HS is estimated to have 1,512 in-boundary students, plus 376 students from North Stafford, for a grand total of 1,888 students.
- Colonial Forge HS is estimated to have 1,116 in-boundary students, plus 752 students from Brooke Point, plus 114 students from North Stafford, for a grand total of 1,982 students.
- HS#6 is estimated to receive 847 students from Colonial Forge, plus 271 students from Mountain View, plus 596 students from Stafford, for a grand total of 1,715 students.

Note: Totals are subject to rounding error.



Stafford County Public Schools

Inspire | Empower | Excel

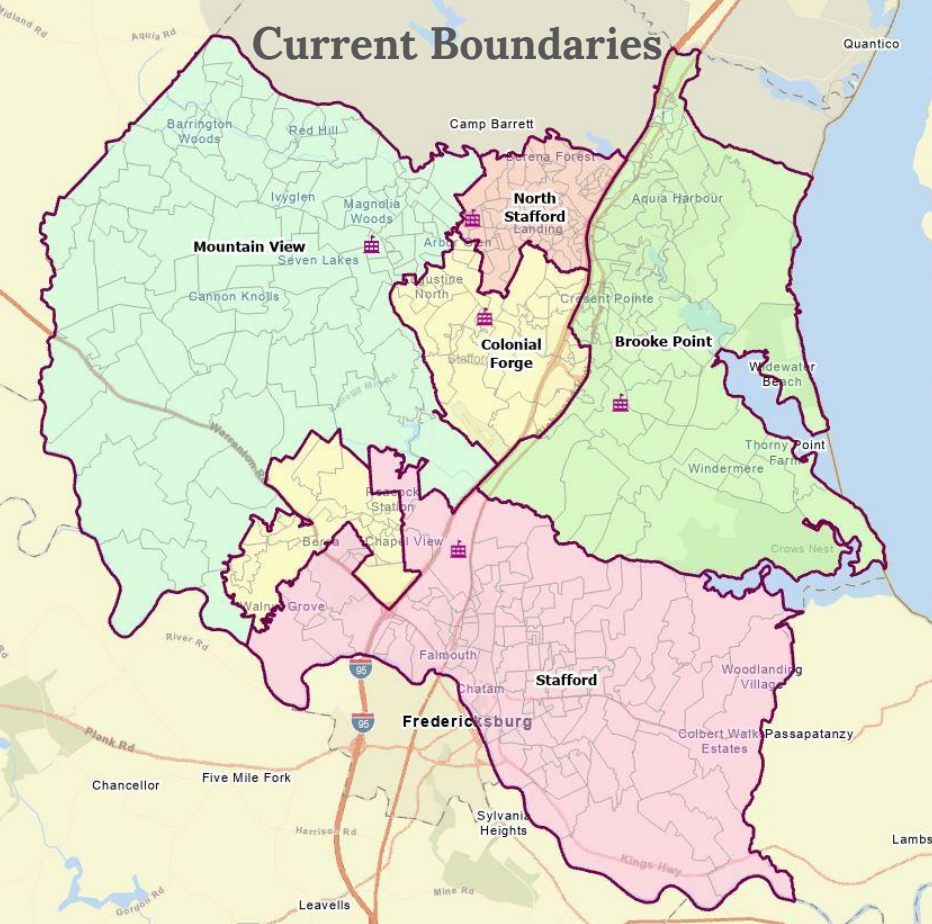
Scenario G



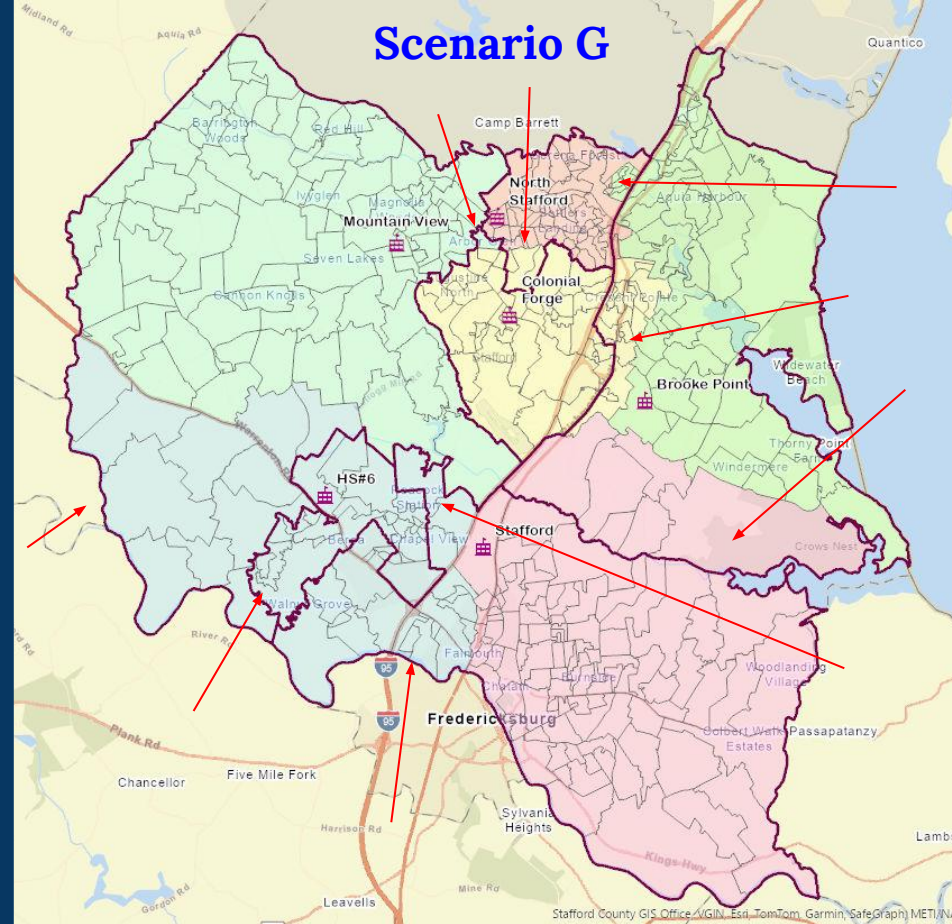
Stafford County Public Schools

Inspire | Empower | Excel

Current Boundaries



Scenario G



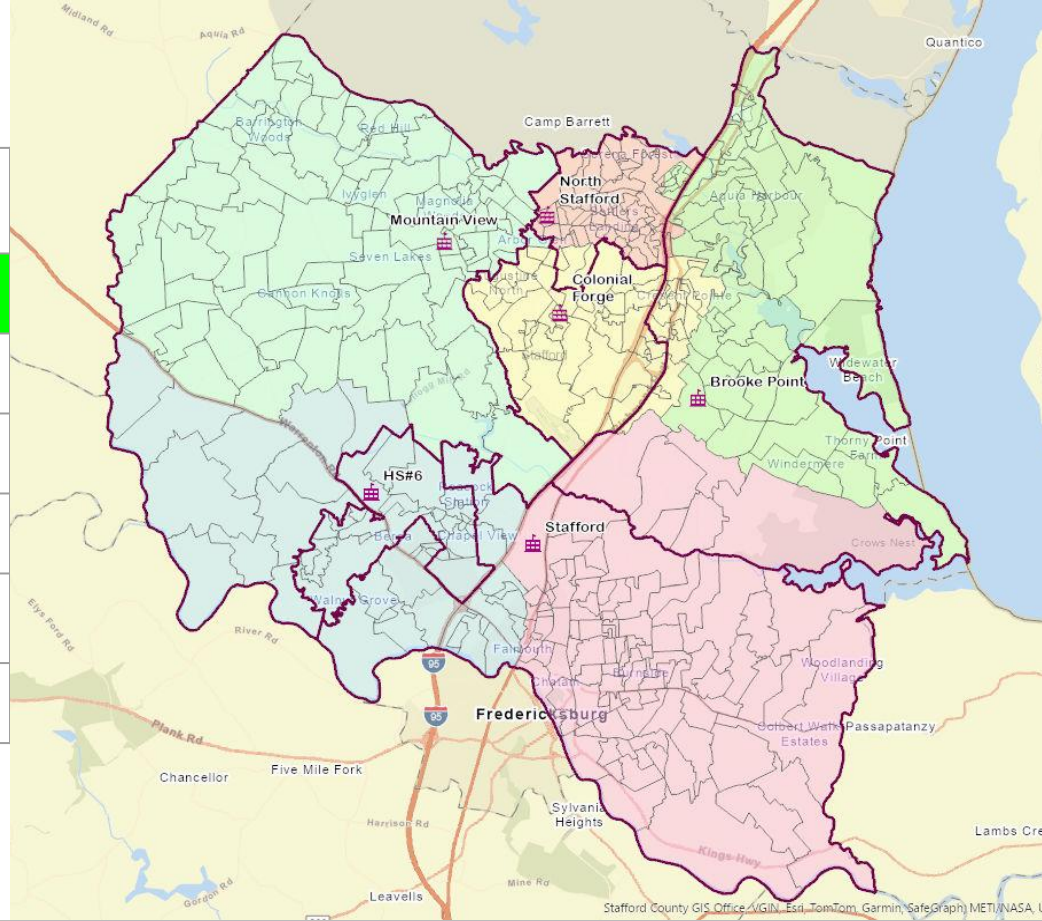
Stafford County Public Schools

Inspire | Empower | Excel

Scenario G

FRL = Free & Reduced Lunch
b/c = Boundary Change

High School	Capacity Before b/c 2026	Capacity After b/c 2026	Capacity After b/c 2029	Capacity After b/c 2032	FRL% Before	FRL% After
North Stafford	105%	79%	84%	98%	57%	57%
Brooke Point	108%	87%	93%	104%	51%	53%
Colonial Forge	98%	99%	102%	109%	37%	37%
Mountain View	99%	83%	86%	87%	37%	39%
Stafford	108%	91%	93%	99%	49%	46%
HS#6	N/A	79%	89%	101%	N/A	47%



Scenario G - Reassigned Student Estimates for 2027

Scenario G	Brooke Point HS	Colonial Forge HS	HS#6	Mountain View HS	North Stafford HS	Stafford HS	Grand Total
Brooke Point HS	1,561	679			23	78	2,341
Colonial Forge HS		1,305	847	31			2,183
Mountain View HS			271	1,780			2,051
North Stafford HS	340	114			1,581		2,035
Stafford HS			596			1,813	2,410
Estimated Students in 2027	1,902	2,097	1,715	1,811	1,605	1,891	11,020

How to read this chart:

- Brooke Point HS is estimated to have 1,561 in-boundary students, plus 340 students from North Stafford, for a grand total of 1,902 students.
- Colonial Forge HS is estimated to have 1,305 in-boundary students, plus 679 students from Brooke Point, plus 114 students from North Stafford, for a grand total of 2,097 students.
- HS#6 is estimated to receive 847 students from Colonial Forge, plus 271 students from Mountain View, plus 596 students from Stafford, for a grand total of 1,715 students.

Note: Totals are subject to rounding error.



Stafford County Public Schools

Inspire | Empower | Excel

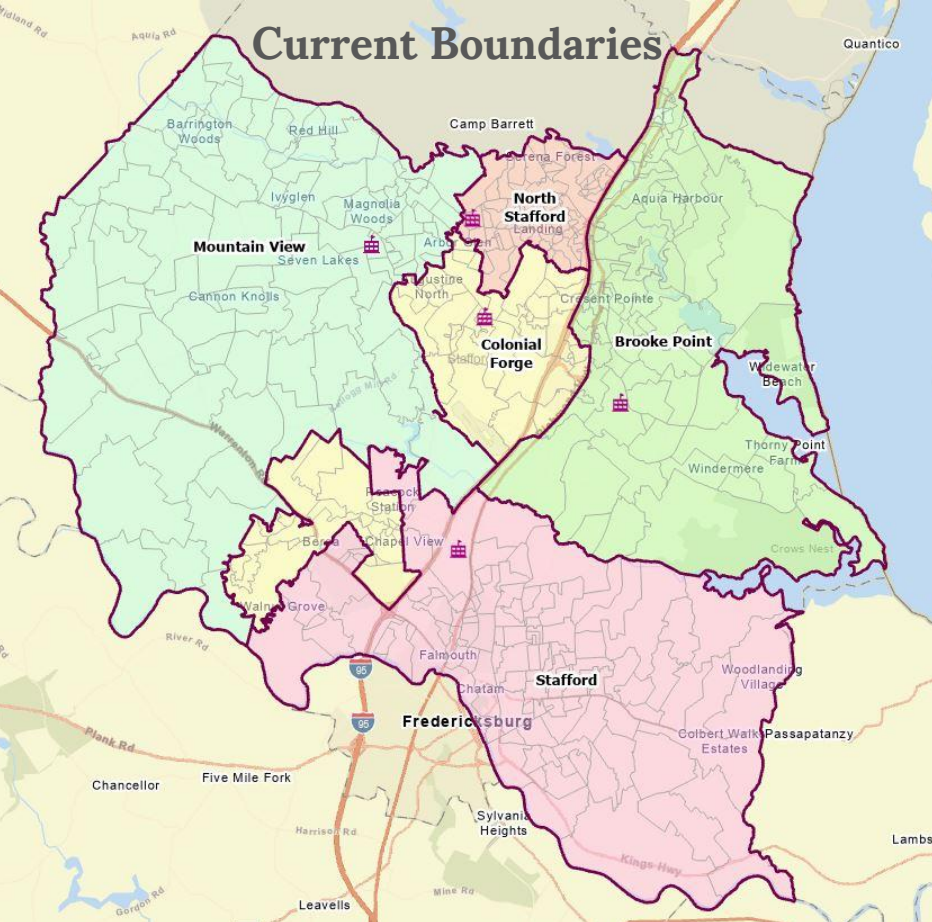
Scenario G1



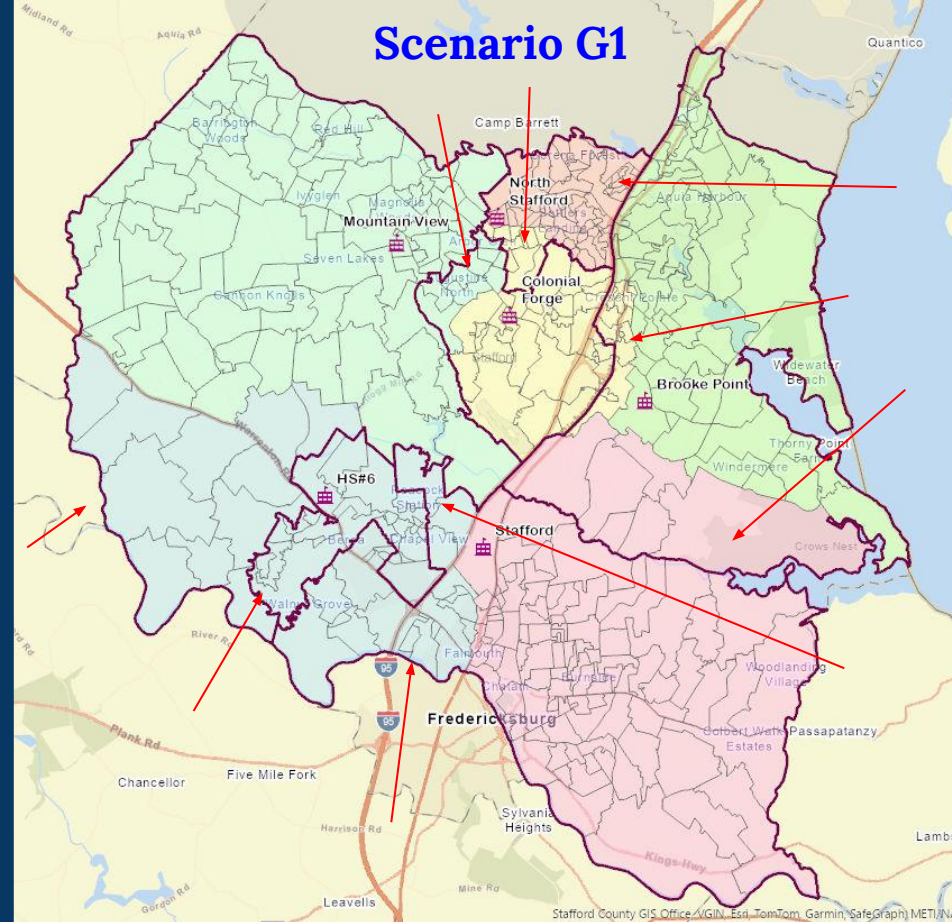
Stafford County Public Schools

Inspire | Empower | Excel

Current Boundaries



Scenario G1



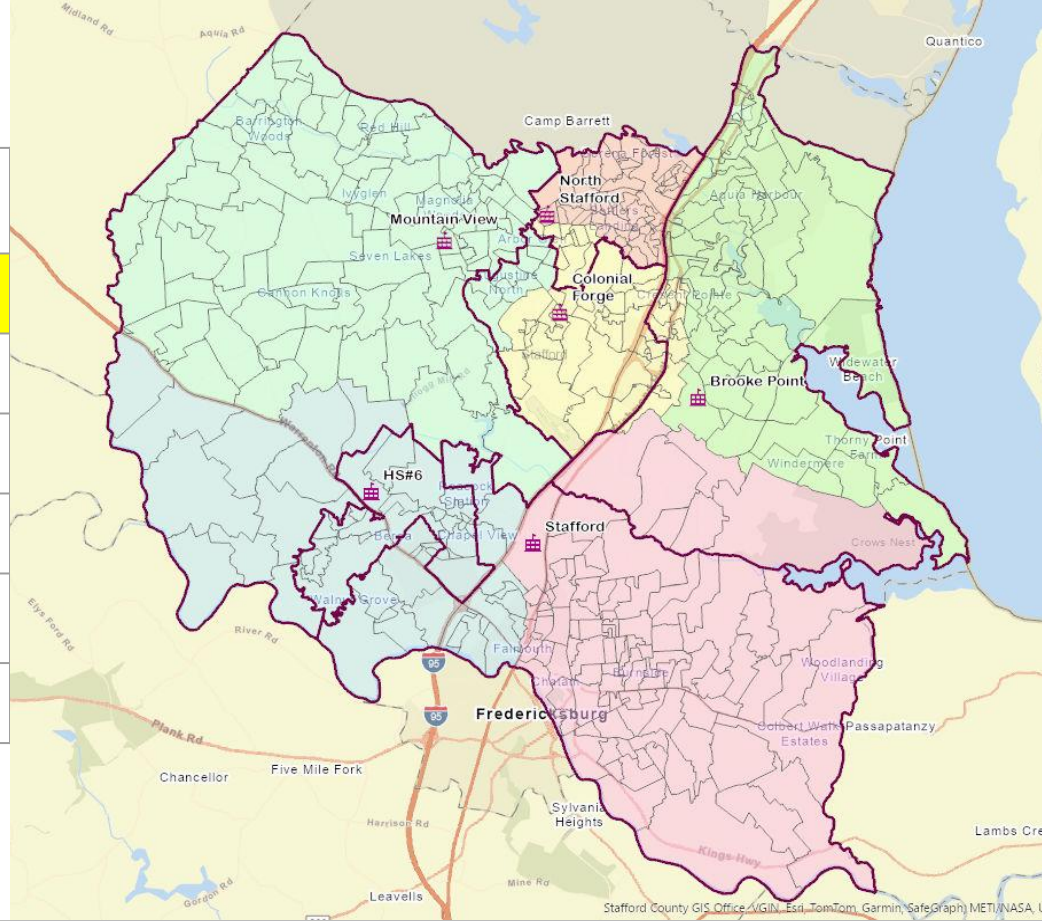
Stafford County Public Schools

Inspire | Empower | Excel

Scenario G1

FRL = Free & Reduced Lunch
b/c = Boundary Change

High School	Capacity Before b/c 2026	Capacity After b/c 2026	Capacity After b/c 2029	Capacity After b/c 2032	FRL% Before	FRL% After
North Stafford	105%	83%	89%	104%	57%	60%
Brooke Point	108%	83%	88%	99%	51%	49%
Colonial Forge	98%	90%	94%	102%	37%	39%
Mountain View	99%	92%	93%	94%	37%	37%
Stafford	108%	91%	93%	99%	49%	46%
HS#6	N/A	79%	89%	101%	N/A	47%



Scenario G1 - Reassigned Student Estimates for 2027

Scenario G1	Brooke Point HS	Colonial Forge HS	HS#6	Mountain View HS	North Stafford HS	Stafford HS	Grand Total
Brooke Point HS	1,792	471				78	2,341
Colonial Forge HS		1,116	847	219			2,183
Mountain View HS			271	1,780			2,051
North Stafford HS		334			1,701		2,035
Stafford HS			596			1,813	2,410
Estimated Students in 2027	1,792	1,922	1,715	1,999	1,701	1,891	11,020

How to read this chart:

- Brooke Point HS is estimated to have 1,792 in-boundary students, for a grand total of 1,792 students.
- Colonial Forge HS is estimated to have 1,116 in-boundary students, plus 471 students from Brooke Point, plus 334 students from North Stafford, for a grand total of 1,922 students.
- HS#6 is estimated to receive 847 students from Colonial Forge, plus 271 students from Mountain View, plus 596 students from Stafford, for a grand total of 1,715 students.

Note: Totals are subject to rounding error.



Stafford County Public Schools

Inspire | Empower | Excel