

Middle School Task Force

October 17, 2024



Northshore
School District

Agenda

Mission ~ 2013

Northshore School District middle schools provide a learning community that is challenging, equitable, empowering, and developmentally responsive to prepare students for high school and beyond.

- I. Welcome and Warm Ups
 - II. Norms and Agreements
 - III. Purpose
 - IV. Middle School Programming
 - V. Culture & Community Focus
 - VI. Data Analysis and Response
 - VII. Plan for next meeting
-

Norms & Agreements

No one knows everything;
together we know a lot

Embrace an abundance
mindset

Center voices
from the
margins.
&
Center our
own stories +
knowledge!

Prioritize impact over
intent

Speaking up is
important, even if our
voice shakes

Purpose

To collaboratively examine our current middle school program in Northshore to determine its effectiveness, identify gaps and misalignments, and create recommendations for improvements that align with the way we want middle schools in Northshore to be for each and every student, now and in the future.

Essential Questions:

What do we want our middle schools to be? What do we want each middle schooler to experience?

- What's good here? For who?
 - What do we know?
 - What do we need to know? Why?
 - What do we need? Why?
 - How do we get there?
 - How will we know we have arrived?
-

Today's Targets

- Synthesize key ideas, key actions, strategies, and structures related to each characteristic of Middle School Climate and Culture
 - Analyze data sets to make conjectures about the middle school experience.
 - Identify and discuss what is in place and what may be missing that supports Climate and Culture
-

The Program

Middle School Programming



Highlights from 2017-2018

- Block Scheduling
- Exploratory Electives
- Advisory or “Mascot Time”
- Lockers and Lunches
- Open House-Curriculum Nights
- Homework
- Activities
- Athletics

➤ What are the similarities and differences between the 2017-2018 program?

➤ What are the similarities and differences between schools?

➤ Do they matter? Why or why not?

The Middle School Program

Discuss:

- What's good here? For who?
- What do we know?

****Click on the link for your school and add your thoughts.****

District Links



CLICK FOR LINKS:

Canyon Park

Kenmore

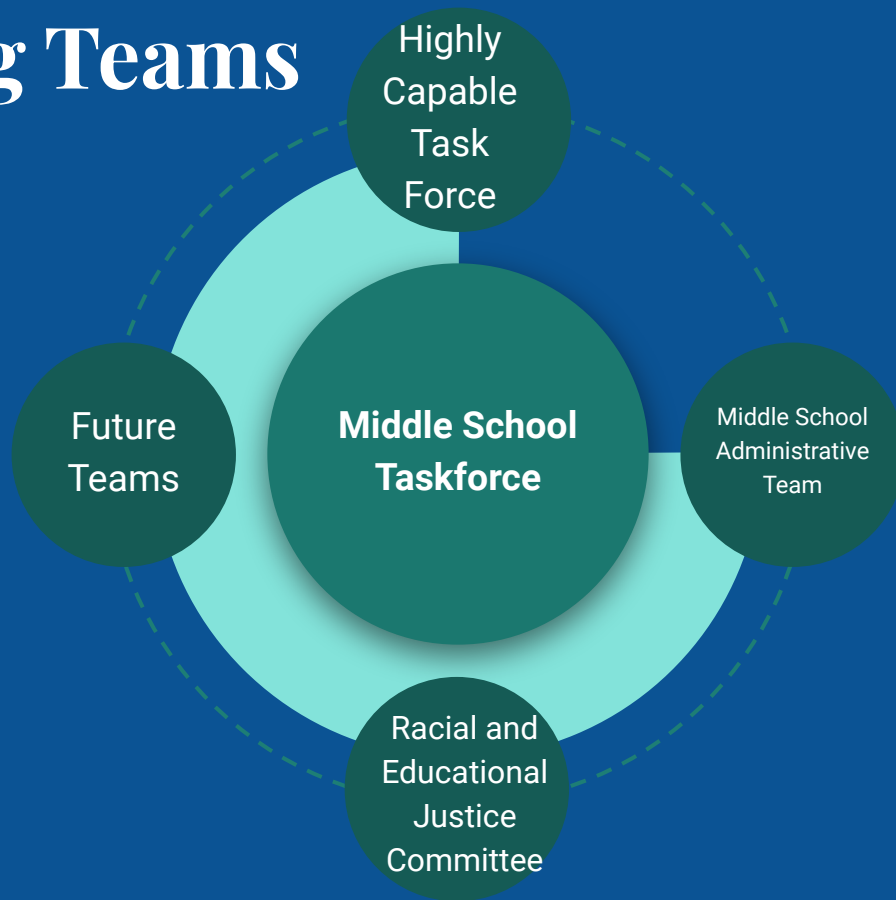
Leota

NLO

Northshore

Skyview

Timbercrest



Climate & Culture

Educators respect
and value young
adolescents

Comprehensive
Counseling and
support services
meet the needs of
young adolescents

The school
environment is
welcoming,
inclusive, and
affirming for all

Every student's
academic and
personal
development is
guided by an
adult advocate

The school
engages
families as
valued
partners

**School
safety is
addressed
proactively,
justly, and
thoughtfully.**

The school
collaborates with
community and
business
partners

Climate and Culture Characteristics

Discussion Protocol:

1. *Go back through the reading and underline or highlight one key idea for each characteristic.*
2. *Take turns sharing.*
3. *Invite someone to “quick jot” on the chart.*
4. *Discuss and add the key actions, strategies, or structures named.*
5. *You will rotate to two other charts and repeat when instructed.*

Characteristic Description	
KEY IDEAS	KEY ACTIONS

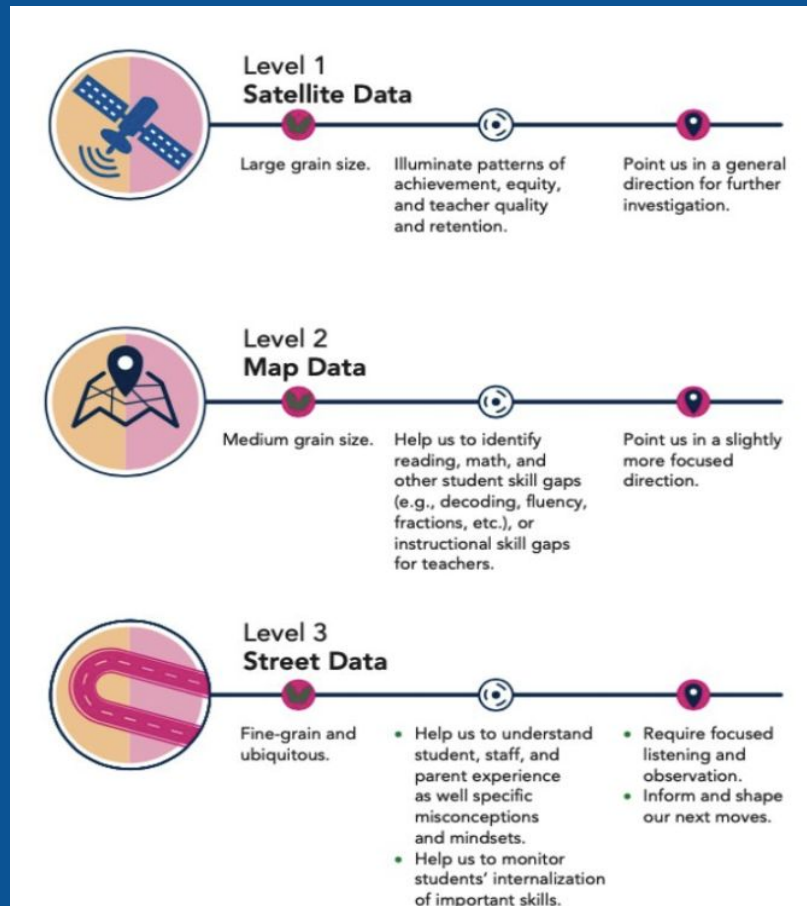
Gallery Walk

- Walk and Talk:
 - Is there anything missing? → **Add it.**
 - Is there anything you resonate with? → **Star it.**
 - Is there anything you are curious about → **Add a ?**

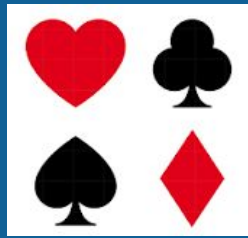
Data

Data Sets

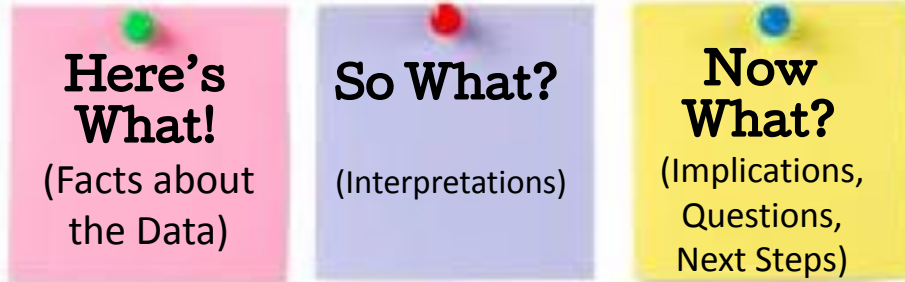
- Attendance
- Discipline
- Panorama - Social Emotional, & Environment & Belonging
- Portrait of a Graduate Data



Data Protocol



Please go to your respective suit to look at the data provided.



- ❖ Here's What! Talk to others and jot your thoughts on a post it as a group about what the data shows.
- ❖ So What? Jot your thoughts about what you think it means/what it make your think about.
- ❖ Now What? Talk and jot your thoughts about what the data implies, your wonderings, and what we should consider next.

The Middle School Program

Discuss:

- The data you reviewed and how it relate to the 7 characteristics.
- Review additional artifacts through weblinks
- Click on the link for your school and add your thoughts.



[CLICK FOR LINKS:](#)

[Canyon Park](#)

[Kenmore](#)

[Leota](#)

[NLO](#)

[Northshore](#)

[Skyview](#)

[Timbercrest](#)

Final Thoughts?

What are you thinking now?

****Add any remaining thoughts to the last boxes in your school template.****

Essential Questions:

What do we want our middle schools to be? What do we want each middle schooler to experience?

- What's good here? For who?
 - What do we know?
 - What do we need to know? Why?
 - What do we need? Why?
 - How do we get there?
 - How will we know we have arrived?
-

Next Steps

Next Meeting

November 21

5-7pm

READ: AMLE Book, *Curriculum, Instruction, and Assessment*, p. 25-42

REVIEW: Provided Data/Artifacts and website links as needed.

CONSIDER: What's missing?

- Unpack Middle School Curriculum, Instruction, and Assessment
 - Analyze and respond to data related to the “academic” program.
-

“Anticipated” Process & Timeline

Examine our current middle school program model to determine its effectiveness by:

FALL:

- Identify the existing strengths of the current model, based on the essential attributes and 18 characteristics
- Identify gaps and misalignments using various forms of data

EARLY WINTER:

- Create proposals and prioritize recommendations for improvements that align ALL middle schools in Northshore

LATE WINTER/SPRING:

- Subcommittees develop implementation plans for the 2025-26 school year
- Begin developing long range plan for Middle Schools

Additional Information



2024 - 25 SY School Data for Counselors & Mental Health Specialists

	School Counselors	Ratios		Mental Health Specialists:
Middle School 7 sites	20	Counselor to Student Ratio 1:365		1 per middle school, 2-3 days a week Average Caseload: 7-10 students daily

Assessments	Direct/Indirect Services	Management
<ul style="list-style-type: none">• SBIRT• Health Youth Surveys• Panorama	<ul style="list-style-type: none">• Class Lessons• Small Support Groups• 1:1 Guidance	<ul style="list-style-type: none">• Guidance Team• Scheduling• Referrals

District-Based Links

- [Family Engagement and Resource Center](#)
- [Community Assistance](#)
- [Mental Health Library](#)
- [Student Rights and Responsibilities](#)
- [Safety & Security](#)
- [Middle School Sports](#)

Good-Bye