

EXCEPTIONAL FAMILY MEMBER PROGRAM SPECIAL EDUCATION SUPPORT

EMPOWERING FAMILIES, PROMOTING SELF-ADVOCACY!

NAVY REGION SOUTHWEST SPECIAL EDUCATION SUPPORT TEAM:

NAVY EFMP CASE LIAISONS (CLs):

- Provide information/referral services, and non-medical case management
- Provide a connection between military, local, and national community resources and the EFMP families who utilize support services
- Provide special education support related to IEPs and 504s.

SCHOOL LIAISON OFFICERS (SLOs):

- Offer assistance in navigating the administrative systems within local public schools
- Provide information about programs and services available on the installation and in the local community
- Provide information concerning local school policies and regulations pertaining to special education
- Can assist families with the required signatures for EFMP enrollment form DD 2792-1

REGION EFMP SPEC ED LIAISON (RSEL):

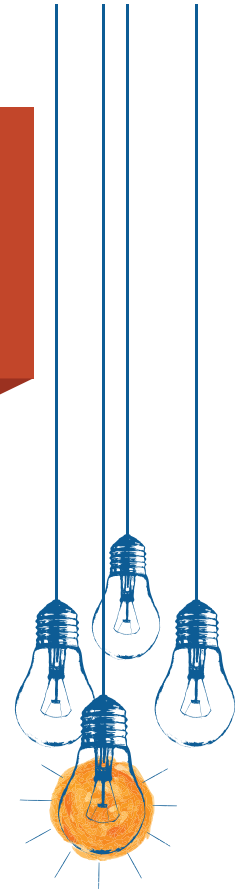
- Support Navy EFMP families with special education needs as it pertains to Individual Education Programs (IEPs), 504 plans, and associated plans to support military children with special education needs
- Review IEPs and 504 plans with Navy families whose special education needs are beyond the scope of FFSC EFMP Case Liaisons

NAVY EFMP SPECIAL NEEDS ATTORNEY:

Navy Region Legal Service Office SW can provide:

- IEP/504 eligibility support
- IEP/504 advice/consultation
- Special education laws for the state
- IDEA support and understanding

*** For special education assistance, please contact your EFMP Case Liaison at your local Fleet and Family Support Center ***



EFMP Family Support

Naval Air Facility El Centro
3rd Street, Bldg. 401, Rm. 118
El Centro, CA 92243
760-339-2482

NAVAL AIR STATION FALLON
4755 Pasture Road
Bldg. 309, Floor 1
Fallon, NV 89496
775-426-3333

NAVAL AIR STATION LEMOORE
966 Franklin Avenue, Bldg. 966
Lemoore, CA 93246-5001
559-998-4042

NAVAL AIR WEAPONS
Station China Lake
610 Blandy Avenue, Bldg. 2308
China Lake, CA 93555
760-939-4545

NAVAL BASE VENTURA COUNTY
1000 23rd Avenue, Bldg. 1169
Port Hueneme, CA 93043
805-982-5037

**NAVAL SUPPORT
ACTIVITY MONTEREY**
1280 Leahy Road
Monterey, CA 93940
831-656-3060

NAVAL BASE CORONADO
Building 318
Saufley Road
San Diego, CA 92135-7138
619-545-6071

NAVAL BASE POINT LOMA
Buildings 211 & 212
140 Sylvester Road
San Diego, CA 92106-3521
619-553-7505

NAVAL BASE SAN DIEGO
Buildings 259 & 263
3005 Corbina Alley, Suite 1
San Diego, CA 92136-5190
619-556-7404

BAYVIEW HILLS BRANCH
1967 Sky Harbor Road
San Diego, CA 92139
619-267-1720

Gateway Village Branch
3207 Rosecrans Place
San Diego, CA 92110
619-222-5548

Kearny Mesa Branch
3950 Calle Fortunada
San Diego, CA 92123
619-987-9449

**THE VILLAGE AT
SERRA MESA BRANCH**
3141 Afton Road
San Diego, CA 92123
858-505-1369

