



**2024 - 2025  
Campus Improvement Plan**

YES Prep Northline Secondary  
YES Prep Public Schools  
Campus Number 101845012  
441 Little York Rd, Houston, TX 77076

Each school year the principal of each school campus, with the assistance of the campus-level School Support Team, must develop, review and revise the campus improvement plan for the purpose of improving student performance for all student populations, including students in special education programs under Education Code Chapter 29, subchapter A, with respect to the academic excellence indicators and any other appropriate performance measures for special needs populations. Education Code 11.252 (b). The CIP is available in English and Spanish at the campus front office, on the campus website, at PFE meetings, and at parent and community engagement activities and events. Any questions regarding this CIP should be directed to:

<b>Ruth Yonamine Bobba</b> Director of Government Grants and Compliance YES Prep Public Schools, Inc. 5455 South Loop East Freeway Houston, TX 77033 (713) 842-5540 Office Ruth.YonamineBobba@yesprep.org	<b>Principal Brittany McGruder</b> Principal YES Prep Northline Secondary 441 Little York Rd, Houston, TX 77076 101845012 (713) 842-5400 Brittany.McGruder@yesprep.org
-----------------------------------------------------------------------------------------------------------------------------------------------------------------------------------------------------------------------------	------------------------------------------------------------------------------------------------------------------------------------------------------------------------------------------

**Table of Contents**

DISTRICT AND CAMPUS MISSION STATEMENT AND GOALS .....3

TEXAS EDUCATION AGENCY (TEA) STRATEGIC PRIORITIES.....4

SCHOOL SUPPORT TEAM .....5

COMPREHENSIVE NEEDS ASSESSMENT .....6

PARENT AND FAMILY ENGAGEMENT .....8

STATE COMPENSATORY EDUCATION (SCE) .....8

COORDINATION OF FEDERAL, STATE, AND LOCAL FUNDS.....9

## DISTRICT AND CAMPUS MISSION STATEMENT AND GOALS

YES Prep Northline Secondary is part of the YES Prep Public Schools, Inc. (YES Prep, system, or district) network of open-enrollment charter schools. Our systemwide initiatives are:

### District's Vision

Every child in Houston will have equitable access to a public school that delivers a college-ready education.

### District's Mission

YES Prep Public Schools empowers all Houston students to succeed in college and to pursue lives of opportunity.

### System Strategic Priorities

- **Educational Equity:** Ensure that every child in Houston has greater access to YES Prep Pre-K through 12th grade education.
- **Student Achievement:** Ensure that in every school, in every classroom, every day, ALL students engage in rigorous, aligned and active learning, dramatically increasing their college readiness.
- **Culture & Identity:** Embrace the diverse communities, cultures, identities and abilities of ALL students, empowering all Houston students to succeed in college and to pursue lives of opportunity.
- **Talent:** Continue to attract diverse, extraordinary talent at every level and will purposefully increase inclusivity, retention and development of teammates.
- **Support Systems & Processes:** Make optimal use of systems and data, and share innovative best practices to significantly increase agility, productivity and sustainability.

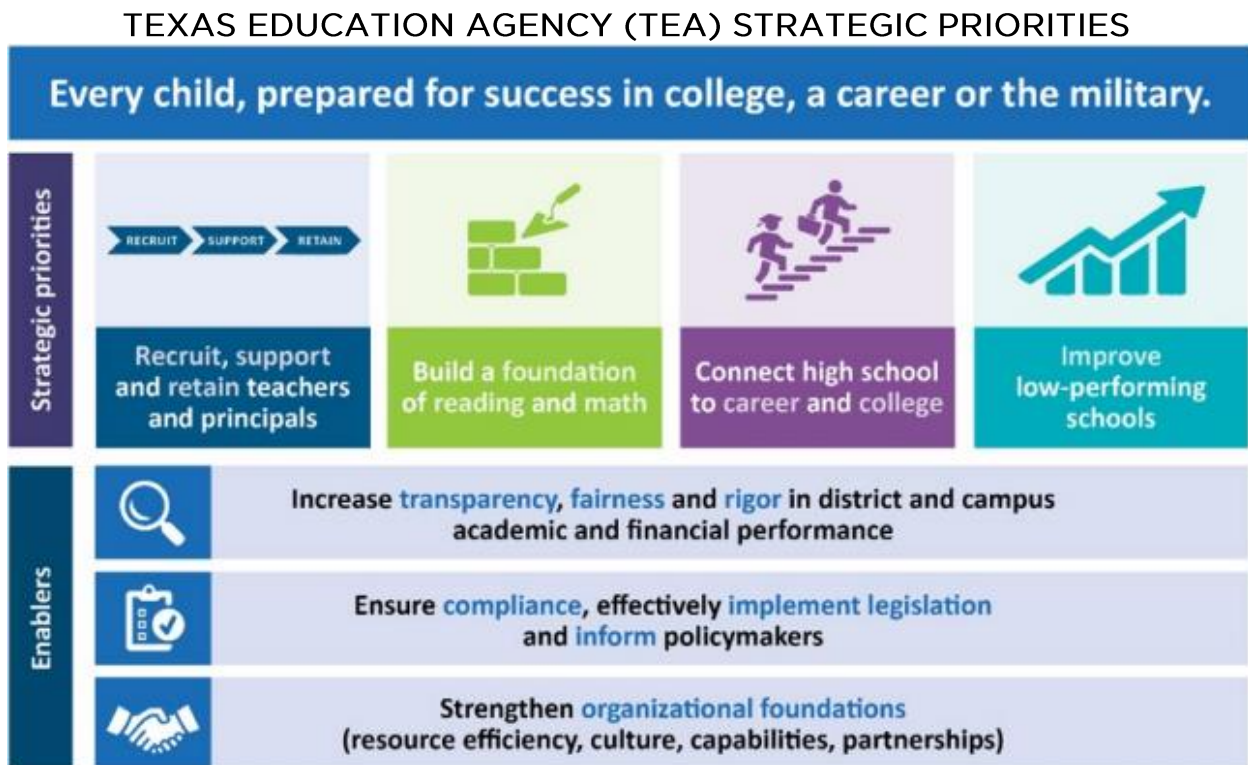
### Campus's Vision

YES Prep Northline's mission is to increase the number of students from underserved communities who graduate from college prepared to lead. YES Prep Northline's vision is that we will graduate empowered, equity-driven citizens ready to lead and serve their community.

### Campus Goals (Focus/Critical Areas)

1. **Student Achievement:** Northline Secondary will achieve a 50% on Domain I (the average of 'Approaches' and above, 'Meets' and above, and 'Masters') on the STAAR test, AND meet 100% of STAAR Domain III Targets.
2. **Family and Community Involvement:** Northline Secondary will create an inclusive environment for parents and families, leading to a 50% matriculation rate for the Class of 2025. 96% of students enrolled on the first day of the 24-25 school year will persist until the last day of school due to a strengthened home-school connection.

3. **School Culture and Climate:** Northline Secondary will cultivate a consistent classroom environment with clear expectations, resulting in a cumulative Average Daily Attendance of 95.5%.



**Source:** [TEA Strategic Plan | Texas Education Agency https://tea.texas.gov/about-tea/welcome-and-overview/tea-strategic-plan](https://tea.texas.gov/about-tea/welcome-and-overview/tea-strategic-plan)

#### ESSA Program Implementation Statutory Requirements

- Element 1: SWP Comprehensive Needs Assessment (CNA)
- Element 2: SWP Campus Improvement Plan (CIP) Requirements
- Element 3: Program Evaluation/Annual Review

#### TITLE I, PART A SCHOOLWIDE PROGRAM (SWP) REQUIREMENTS

- Element 1: SWP Comprehensive Needs Assessment (CNA)
- Element 2: SWP Campus Improvement Plan (CIP) Requirements
- Element 3: Parent and Family Engagement (PFE) Requirements

## SCHOOL SUPPORT TEAM

Our School Support Team (SST) was designed to conduct the Campus Needs Assessment (CNA), create, review, monitor, and evaluate the Campus Improvement Plan (CIP). This model is aligned to state legislation and YES Prep policy. The intention of the SST is to pull together our community in a constructive, organized, and unified body to enhance the education of all students.

#	Full Name	Position/Title
1	Brittany McGruder	Principal
2	Megan Gibbs	School Leader ( <i>Director of Academics</i> )
3	Kelisha Everage	School Leader ( <i>Director of Student Support</i> )
4	Michelle Castillo	Community Member
5	Erika Gonzalez	Community Member
6	Jackie Sandate	Parent
7	Raquel Fuentes	Parent
8	Linda Garza	School Leader ( <i>Director of College Counseling</i> )
9	Emily Garcia	School Leader ( <i>Director of Campus Operations</i> )
10	Kunal Kataria	Teacher
11	Michael Healey	Teacher
12	Eric Newcomer	Administrator (Head of Schools)
13	Trista Fortuna	Administrator (Government Grants Specialist)
14	Marla Trujillo	Dean of Instruction

### Meetings and Community Access

Documentation of the process includes meeting minutes, agenda, and sign in sheets. The School Support Team met on July 29, 2024, and again on July 29, 2024 to develop the CNA. The first CNA meeting was held in YES Prep Northline Secondary and started at 1:00-1:45pm. The second meeting was held in YES Prep Northline Secondary and started at 2:00-2:45pm. We plan to meet again each quarter to review and revise the CNA as needed. If an SST member was not able to attend the meeting, efforts were made to contact the member to update him/her/them on the topics discussed and to gather his/her/ their input.

During the first meeting on July 29, 2024, Principal began the meeting with introductions. An ice breaker was conducted to support relationship building. The SST members had a chance to connect and know the role of each team member. Then, Principal McGruder shared with the group the team expectations. Several handouts were provided to attendees that lead discussions during the meeting. Team members were also given the opportunity to learn about the purpose of the team, learn specific vocabulary like CNA, CIP, Title I. The team also learned about the vision and mission of the YES Prep Northline Secondary. The importance of attendance and the purpose of this Title 1 Team was emphasized and explained to all members. The purpose of the Comprehensive Needs Assessment was shared. Principal «Principal\_Name» then provided each person with a sample list of data options that the committee members could use to lead conversations to identify which data the

committee would review to gather strengths and problems from the 2023-2024 school year. Principal McGruder led the discussion as data was identified by the group to be reviewed at the next meeting. The committee decided to look at six specific data points to identify strengths and problems from the 2023-2024 school year. Principal McGruder thanked everyone for their participation and reminded everyone of the second CNA meeting.

At the second meeting on July 29, 2024, the SST reviewed the listed data and prioritized the information into strengths and problems. The team acknowledged the strengths from 2023-2024 school year but focused on the problems identified in the data. Principal McGruder led the team in prioritizing the problems. Each team member was asked to help identify three to five focus areas for next year based on the problems identified. The team came to a consensus on three main problems that represent the highest leverage focus areas. These will become the priorities for next year. A Root Cause Analysis was completed on the three problems.

The School Support Team reviewed the data listed to identify strengths and problems.

Data Sources Examined during the CNA Process	Title I SWP Element
<ul style="list-style-type: none"><li>• Evaluations from program, activities, and initiatives</li><li>• Census</li><li>• TEA Accountability Ratings</li><li>• STAAR performance of surrounding schools</li><li>• MAP performance of YES Prep Secondary schools</li><li>• Staff Quality</li><li>• Community Feedback</li><li>• YES Prep programming and teaching facilitation data</li><li>• Staff Development</li><li>• Standardized Tests</li><li>• Surveys and Interviews of Students/Staff/Parents</li><li>• Technology Inventory</li></ul>	1, 2, 3

COMPREHENSIVE NEEDS ASSESSMENT

Campus Profile

YES Prep Northline Secondary was founded in 2017 to serve students in 6<sup>th</sup>-12<sup>th</sup> grades. Our campus employs 59 teachers and 28 administrators and support staff.

In terms of performance, 82% of our students are at an Approaches grade level or above on STAAR Reading/English, and 74% of our students are at an Approaches grade level or above on STAAR Math.

Student Demographics

The 2024-2025 schoolwide student demographics (estimates) are:

<b>% economically disadvantaged</b>	94.4%
<b>% English Learners (ELs)</b>	45.7%
<b>% at-risk</b>	59.9%
<b>% special education (SpEd)</b>	5.7%
<b>% Hispanic/Latino</b>	95.1%
<b>% African American</b>	1.4%
<b>% Asian</b>	0.2%
<b>% White</b>	1%
<b>% American-Indian</b>	0.3%

### Neighborhoods Served

The neighborhoods served are the following areas/zip codes Northline and Eastex/Jensen. The neighborhood racial demographics are approximately:

<b>% Hispanic/Latino</b>	94%
<b>% African American</b>	2%
<b>% Asian</b>	1%
<b>% White</b>	1%
<b>% American-Indian</b>	1%

### Conclusion of CNA

#### Summary/Bridge of Identified Problems:

##### Wins:

- 96% Student Persistence
- STAAR Domain 1 of 50%
- STAAR SPED performance
- Achievements of founding graduates
- Double digit SAT growth
- 2nd highest ADA in district
- Level III and IV teachers
- Staff Persistence

##### Concerns:

- Student growth
- CCMR
- Alignment and accountability
- Suspensions for substance abuse and skipping
- Did not meet ADA goal"

**Areas of Focus for Next Year:**

1. Student Achievement
2. Family and Community Involvement
3. School Culture and Climate

**PARENT AND FAMILY ENGAGEMENT**

All school activities will promote and encourage family engagement. The school will offer Parent Consultation Meetings to collaborate with parents and other stakeholders about the family engagement policy.

The Parent and Family Engagement Policy was planned and implemented by a campus committee and will be available in English and Spanish at the campus front office, on the campus website, at PFE meetings, and at parent and community engagement activities and events. The families and parents of YES Prep Northline Secondary will be notified through Family Notes and social media channels that the CIP is on our website and that we will have copies will be available in our front office, as well as shared during Parent Family Engagement meetings.

We will review, assess, and update the Parent and Family Engagement Policy quarterly during the 2024-2025 school year.

There will be multiple meetings at flexible times, such as meetings in the morning and evenings, during different days of the week to accommodate ALL YES Prep Northline Secondary families' needs. Families and parents will be encouraged to attend these informative meetings where they will learn about the school's participation in Title I programming, curriculum programs, assessments and how student achievement will be measured and how the school and families will partner to support students' academic growth.

Participation in these meetings will be actively promoted through our social media channels, website and the weekly Family Notes.

**STATE COMPENSATORY EDUCATION (SCE)****Policies and Procedures**

YES Prep has systemwide written policies and procedures to identify the following:

- Students who are at risk of dropping out of school under state criteria
- Students who are at risk of dropping out of school under local criteria



- How students enter the SCE program
- How students are exited from the SCE program
- Cost of the regular education program in relation to budget allocations per student and/or instructional staff per student ratio

Total SCE funds allotted to YES Prep Northline Secondary \$7,727,872.

The process we use to identify students at-risk is:

- Six-weeks documented interventions once a student is in the response to intervention (RTI) process.
- If the student does not improve after six weeks, they will be evaluated by the RTI team to identify other necessary interventions.
- Student would be identified as at-risk after the RTI team meets.

The process we use to exit students from the SCE program who no longer qualify is:

- The RTI team will evaluate at-risk students at the six-week point to determine if they need continued interventions; or
- Based on performance, should be exited from the SCE program.

### **Strategies to Serve At-Risk Students**

Early Identification: Implement a system for early identification of at-risk students. This might involve reviewing academic performance, attendance records, behavior reports, and input from teachers and counselor.

Small Group Instruction: Offer small group instruction for students who are struggling academically. This allows for more personalized attention and targeted interventions.

Tutoring and Academic Support: Establish tutoring programs or peer tutoring where students can get extra help with challenging subjects.

Data-Driven Decision-Making: Use data to inform decisions and adjust strategies as needed. Regularly analyze academic and behavioral data to track progress and make improvements.

## **COORDINATION OF FEDERAL, STATE, AND LOCAL FUNDS**

Federal funds will be integrated and coordinated with State and Local funds to meet the needs of all our students.

### Federal Funds

- Title I, Part A: \$606,679
- Special Education (IDEA-B): \$126,283
- National School Lunch Program: \$455,909

### State and Local Funds

- General State: \$4,917,053
- State Compensatory Education: \$1,369,087
- Bilingual/ESL Program: \$252,860

## YES PREP NORTHLINE SECONDARY CAMPUS IMPROVEMENT PLAN

### Goal #1: STUDENT ACHIEVEMENT

Goal	Northline Secondary will achieve a 50% on Domain I (the average of 'Approaches' and above, 'Meets' and above, and 'Masters') on the STAAR test, AND meet 100% of STAAR Domain III Targets.
What are one or two areas of <b>STRENGTH</b> for your campus in terms of this goal?	
English I, English II, ELA 8, Science 8, Biology, US History, and Math 8 are all courses of strengths. We have increased our SPED student growth in math between 22-23 and 23-24.	
What are one or two <b>NEEDS</b> or <b>CHALLENGES</b> for your campus in terms of this goal?	
Math 6, Math 7, Algebra I, ELA 6 and ELA 7 are areas of growth for us. SPED ELA growth has remained stagnant.	
What will your <b>READING STRATEGY</b> be for your campus in terms of this goal?	
<ol style="list-style-type: none"> <li>1. All 6th and 7th grade students are enrolled in an intervention block to provide targeted math and reading support.</li> <li>2. During our PLCs, we are focusing on data driven instruction to target gaps by predicting misconceptions, appropriate scaffolds, and targeted reteaching for reading objectives.</li> <li>3. We are focusing on PLCs and coaching conversations effective CFS on breaking down text, finding text evidence, and supporting text evidence with clear explanations and the correct inference.</li> </ol>	
What will your <b>WRITING STRATEGY</b> be for your campus in terms of this goal?	
<ol style="list-style-type: none"> <li>1. All 6th and 7th grade students are enrolled in an intervention block to provide targeted math and reading support.</li> <li>2. During PLCs, we are focusing on reviewing writing to target gaps aligned to STAAR rubrics and providing clear exemplars, feedback, and practice on the skills of making a claim, supporting with the best evidence, explaining the connection, and writing a counter argument (8th-E2)</li> <li>3. All courses incorporate writing via training from our Literacy Specialist and focus on sentence completion, cohesion, verb tense, and accurately answering the questions.</li> </ol>	
What will your <b>MATH STRATEGY</b> be for your campus in terms of this goal?	
<ol style="list-style-type: none"> <li>1. All 6th and 7th grade students are enrolled in an intervention block to provide targeted math and reading support.</li> <li>2. During PLCs, we focus on reviewing student data to determine gaps in both prior grade and current grade knowledge, predict misconception and provide targeted scaffolds to close those gaps.</li> <li>3. We are also focusing on math problem solving strategies that align to the rigor of STAAR.</li> </ol>	
What strategies will be used to serve <b>AT RISK STUDENTS</b> in terms of this goal?	
<ol style="list-style-type: none"> <li>1. Students at risk will be enrolled in either during the day or after school tutorials.</li> <li>2. Targeted data driven pull outs that focus on reteaching skills for our SPED students</li> <li>3. Targeted data driven pull outs to build English language fluency for our EB students</li> </ol>	
What strategies will be used to serve <b>ALL STUDENTS</b> in terms of this goal?	

Every teacher will have unit internalization meetings with their DOI prior to units beginning to review key concepts and build content knowledge. Every teacher, co-planner, and co-teacher will hold lesson internalization meetings prior to priority lessons to review misconceptions, key points, data tracking, and rigor.

What strategies or programs will be implemented to ensure students are receiving a **WELL-ROUNDED EDUCATION**?

All MS students are enrolled in 2 electives each semester that are goal driven and align us to campus values of encouraging the arts and independent expressions. All HS students can select tech, art, or music electives that are goal driven and align to our campus values of encouraging the arts and independent expression. Additionally, all HS students must take 3 AP courses throughout their HS experience.

High Impact Actions	Owner/ Persons Responsible	Resources Needed	Baseline Data & Monitoring Sources	Timeline
Reading Strategy	Principal, Director of Academics, Deans of Instructions, Literacy Specialist, SPED Manager	YES Prep curricular resources, agenda templates	Power BI reports for unit exams, Common Assessments, and MAP	Quarterly
Writing Strategy	Principal, Director of Academics, Deans of Instructions, Literacy Specialist, SPED Manager	YES Prep curricular resources, agenda templates	Power BI reports for unit exams, Common Assessments, and MAP	Quarterly
Math Strategy	Principal, Director of Academics, Deans of Instructions, Literacy Specialist, SPED Manager	YES Prep curricular resources, agenda templates	Power BI reports for unit exams, Common Assessments, and MAP	Quarterly
At-Risk Strategy	Principal, Director of Academics, Deans of Instructions, Literacy Specialist, SPED Manager	YES Prep curricular resources	Power BI reports for unit exams, Common Assessments, and MAP	Quarterly
Well-Rounded Education Strategy	Principal, Director of Academics, Director of Student Support	YES Prep curricular resources, HYPE calendar	Power BI reports for unit exams, Common Assessments, and MAP	Quarterly

Goal #2: FAMILY & COMMUNITY INVOLVEMENT				
Goal	Northline Secondary will create an inclusive environment for parents and families, leading to a 50% matriculation rate for the Class of 2025.  96% of students enrolled on the first day of the 24-25 school year will persist until the last day of school due to a strengthened home-school connection.			
What are one or two areas of STRENGTH for your campus in terms of this goal?				
Our BTS nights have a great turnout. We have very good attendance for our Family University CI nights for 12th and 11th grades. In addition, our pop events during our affinity months have been very successful.				
What are one or two NEEDS or CHALLENGES for your campus in terms of this goal?				
We are working on thinking outside of the box to collaborate cross functionally with ci, culture and academics for any family touchpoints they may have.				
High Impact Actions	Persons Responsible	Resources Needed	Baseline Data & Monitoring Sources	Timeline
Publicize events on messenger, marquee, parent square	Operations Coordinator, Director of Student Support	Survey, SharePoint Resources OneNote	Power BI Reports, Survey Results	Weekly
High attendance during Back to School Night and at quarterly Family University Night	Leadership Team	Survey, SharePoint Resources OneNote, School Culture Resources	Power BI Reports, Survey Results	Quarterly
Schoolwide Events: Pop-up Markets, Carnivals, and student showcases focused on identity, affinity, culture, community, and growth.	Student Support Team, Operations Team, College Initiatives Team, and Instructional Team	Survey, SharePoint Resources OneNote, School Culture Resources	HYPE School Culture Calendar, Student SEL and School Culture Survey	Monthly

Goal #3: SCHOOL CULTURE & CLIMATE				
Goal	Northline Secondary will cultivate a consistent classroom environment with clear expectations, resulting in a cumulative Average Daily Attendance of 95.5%.			
What are one or two areas of STRENGTH for your campus in terms of this goal?				
1. Majority of students attend campus M-TH each week, we don't have large dips in attendance before holidays and major breaks				
What are one or two NEEDS or CHALLENGES for your campus in terms of this goal?				
1. 5% of students in grade 7-12 miss the most school on Mondays and Fridays 2. finding proactive solutions for our Tier 3 students				
High Impact Actions	Persons Responsible	Resources Needed	Baseline Data & Monitoring Sources	Timeline
Hold Attendance committee meeting	SST and Operations	Bi-weekly Agenda, pulled Tiering information, weekly family email to tier 2 and 3 students	Student Tiering information,	Bi-weekly beginning 8/28
Quarterly Incentives, whole school and SOC centered	SST and Operations	Incentives set for each week in the quarter to drive attendance/school culture	ADA Power BI	Weekly beginning 9/2
Quarterly Attendance awards	GLCs, OC 1 and Registrar	Perfect Attendance Reports	Student Tiering information, Perfect Attendance reports	End of 9 weeks, once each quarter