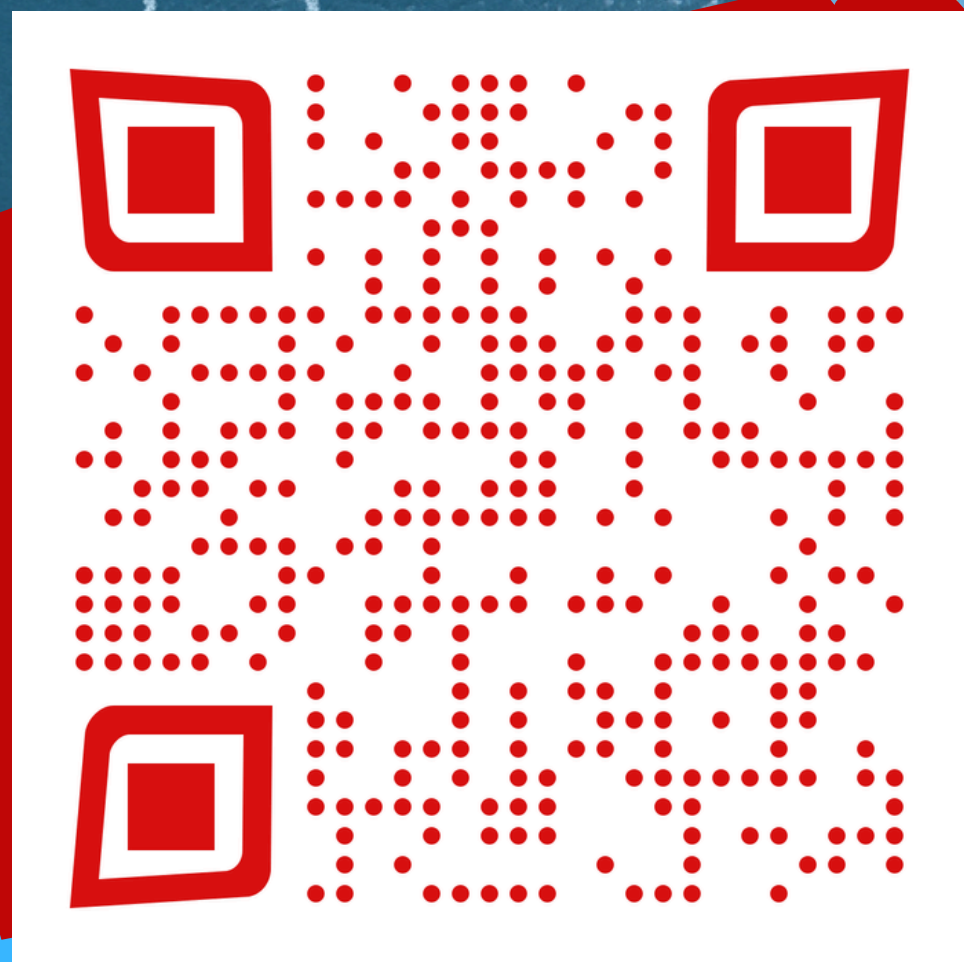




The Clayton County Schools School Social Work Department

Loreal Spencer

Email: loreal.spencer@clayton.k12.ga.us



Sign-in please!



Clayton County Public Schools

"Building A Better Tomorrow, Today"

Priorities and plans for the second semester of the

2022-2023

school year and beyond!

CULTIVATE
A SCHOOL
SAFETY CULTURE
& PROMOTE A
POSITIVE WORKING
ENVIRONMENT

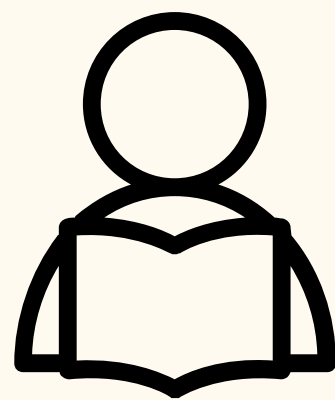
INCREASE
ACADEMIC
ACHIEVEMENT

BOLSTER
FINANCIAL
STABILITY

STRENGTHEN
ORGANIZATIONAL
STRUCTURE

ENHANCE
INFRASTRUCTURE
& NEW FACILITIES

Dr. Anthony W. Smith
Interim Superintendent



We are Student Services where we are:
Maximizing Impact,
Addressing Barriers, and Unleashing Academic Potential

Dr. April Madden, Deputy Superintendent
Ms. Felicia Brown, Assistant Superintendent
Dr. Angela Horrison-Collier, Director



The Role of a School Social Worker



Social workers are the link between the school and the community in providing services to students, family and personnel to promote and support student's academic and social success.

- We provide culturally responsive evidenced-based education, behavior and mental health services
- We promote a school climate and culture conducive to student learning and teaching excellence
- We Maximize access to school-based and community-based resources

SERVICES TO STUDENTS

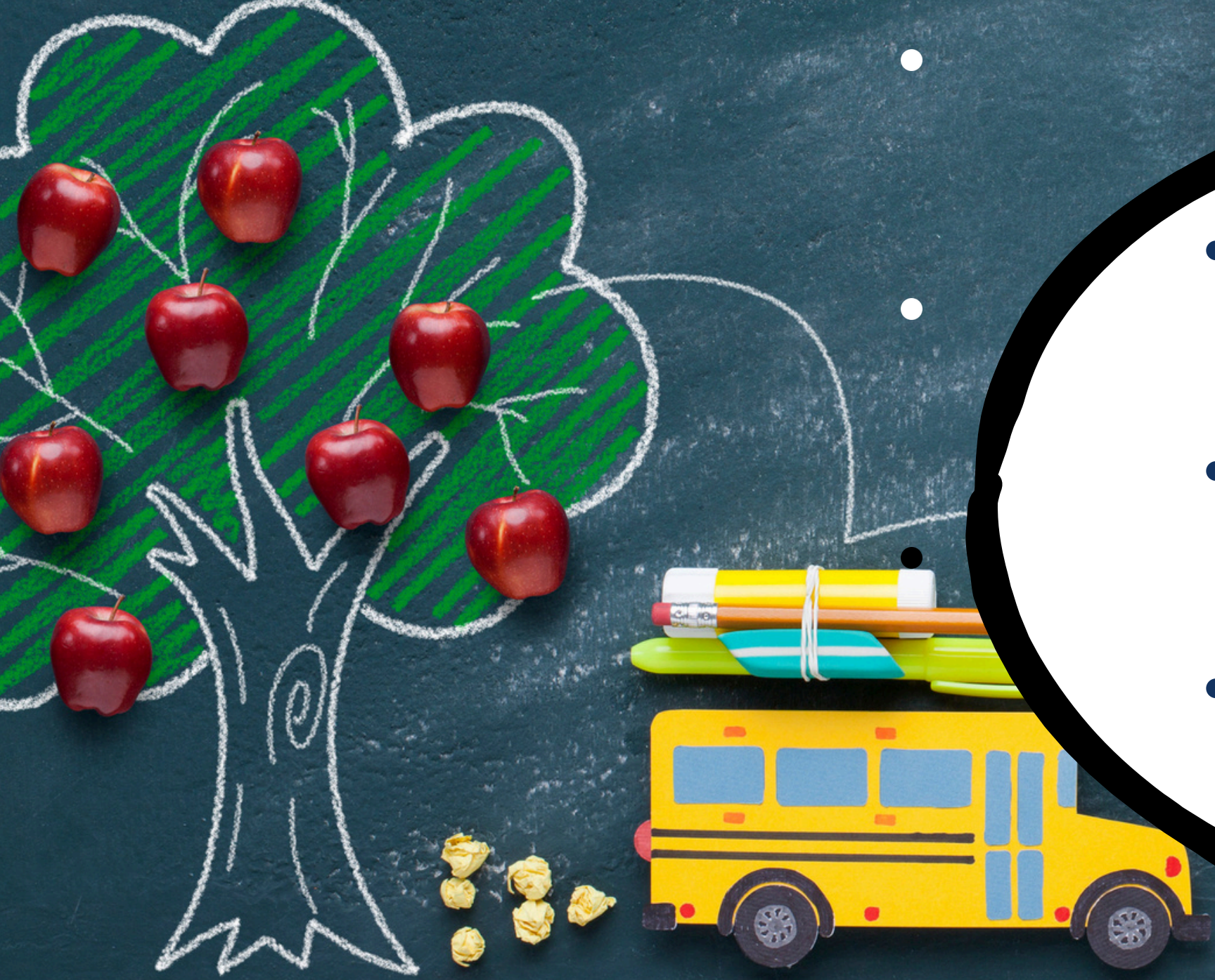
- Provide prevention programs for school attendance, substance abuse and mental health
- Develop strategies and interventions to increase academic success
- Obtain and coordinate community resources to meet students' needs
- Provide crisis intervention
- HB855 for Students in Foster Care



SERVICES TO SCHOOL PERSONNEL

- Assessing student with mental health concerns
- Develop staff in-service training programs
- Assisting teachers with classroom management
- Participating in school level meetings
- Provide multi-tiered supportive services via (MTSS, RTI, PBIS)






- Interview the family to assess problems affecting the child's education
- Work with parents to facilitate support in their children's school adjustment
- Alleviate family stress for the child to function more effectively in school

SERIVCES TO PARENTS/ FAMILIES



- 
- **Develop alternative programs for dropout preventions, truancy, etc.**
 - **Provide prevention programs for school violence, substance abuse, bullying, etc.**
 - **Helping districts to assess school climate**
 - **Helping students to reach their maximum academics via the school social work competencies.**

SERVICES TO DISTRICTS





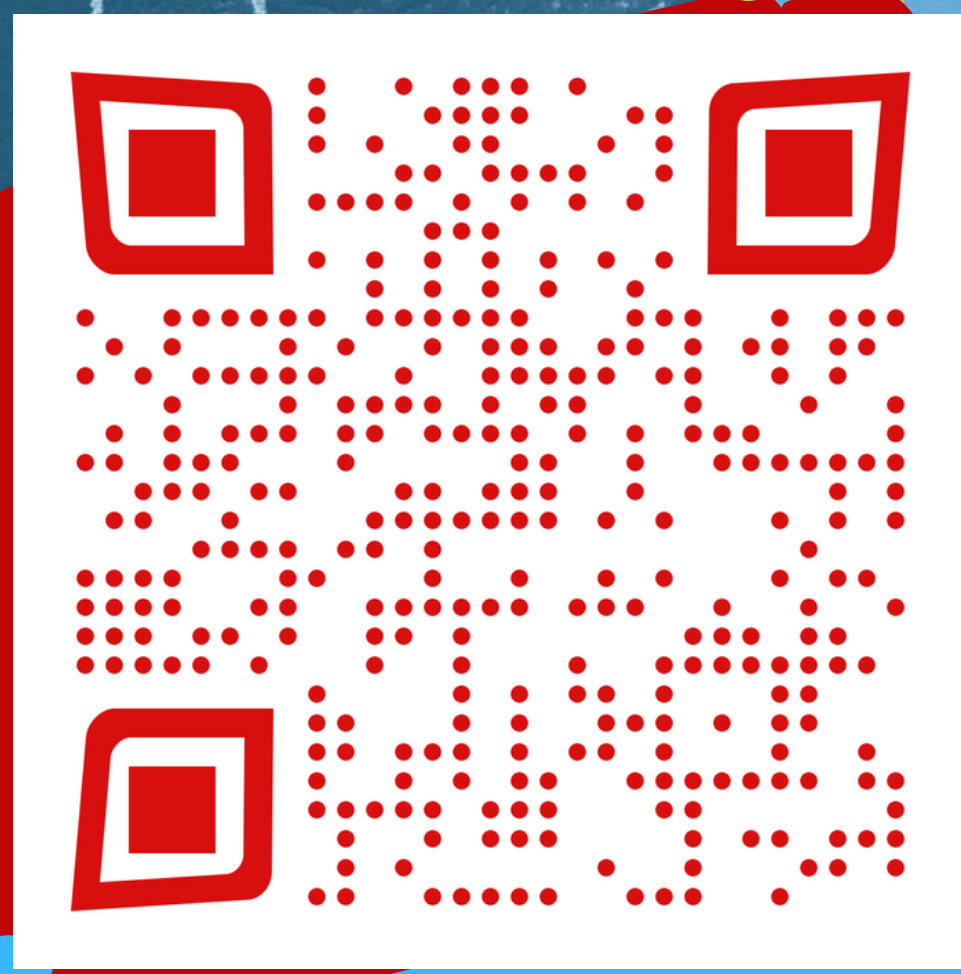
- **Obtain and coordinate community resources to meet students' needs**
- **Helping school districts receive adequate support from social and mental health agencies**
- **Coordinate systems of care to provide wrap-around services**



School Community Liaison



THANK YOU!



Sign-in please!

