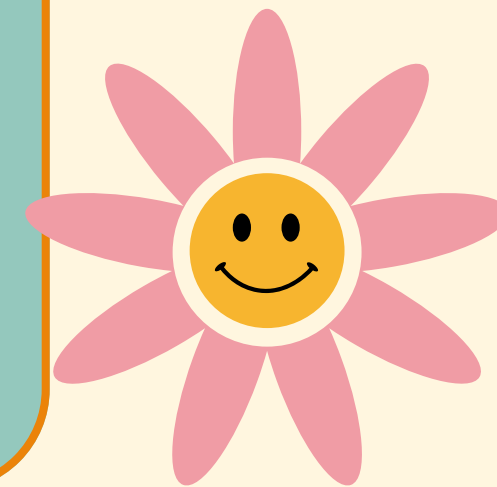


MEET OUR WELLNESS COUNSELOR, ATTENDANCE, PROMOTION, CSU & UC COLLEGES & UCSB FIELD TRIP INFO.

CONOZCA A NUESTRO CONSEJERO DE BIENESTAR, ASISTENCIA,
PROMOCIÓN, UNIVERSIDADES DE CSU Y UC E INFORMACIÓN
SOBRE EXCURSIONES DE UCSB.



ISBELL PARENT
ACADEMY
SESSION 2





HELLO STUDENTS & FAMILIES

**WE ARE HAPPY TO HAVE YOU HERE FOR
OUR 24/25 SCHOOL YEAR**

HOLA ESTUDIANTES Y FAMILIAS.

**ESTAMOS FELICES DE TENERLOS AQUÍ
PARA NUESTRO AÑO ESCOLAR 24/25.**

WELLNESS CENTER



MY NAME IS ERIKA JIMENEZ.
WATCH MY VIDEO TO LEARN
MORE ABOUT THE ISBELL
WELLNESS CENTER, OR "THE
PERCH" AS WE LIKE TO CALL IT!

WELLNESS

ATTENDANCE / ASISTENCIA

GOOD ATTENDANCE IS MISSING 9 DAYS OR LESS OF SCHOOL A YEAR.

BUENA ASISTENCIA ES FALTAR 9 DÍAS O MENOS A LA ESCUELA AL AÑO.

IT IS IMPORTANT TO START EVERY DAY STRONG BY BEING ON TIME.

ES IMPORTANTE, EMPEZAR CADA DÍA CON FUERZA LLEGANDO A TIEMPO.

WHEN CHILDREN MISS SCHOOL THEY FALL BEHIND IN CLASS.

CUANDO LOS NIÑOS FALTAN A LA ESCUELA SE QUEDAN ATRÁS EN CLASE.

IF ATTENDANCE IS GIVING YOU TROUBLE, KEEP YOUR SCHOOL IN THE LOOP.

SI LA ASISTENCIA LE ESTÁ CAUSANDO PROBLEMAS, MANTENGA A SU ESCUELA EN EL BUCLE.

WHEN YOU MISS SCHOOL YOU MISS OUT ON OPPORTUNITIES

CUANDO FALTAS A LA ESCUELA PIERDES OPORTUNIDADES

- SART meeting after 6 Unexcused absences
- 10 Illness days per school year
- **Excused absences** consist of:
 - Parent phone call, parent note signed, doctor's note or email within 72 hours.
- Reunión SART después de 6 ausencias injustificadas
- 10 días de enfermedad por año escolar
- Las ausencias **justificadas** consisten en:
 - Llamada telefónica a los padres, nota firmada por los padres, nota del médico o correo electrónico dentro de las 72 horas.

IMPORTANT INFORMATION / INFORMACIÓN IMPORTANTE

Promotion Policy / Política de promoción

1

- Students must show proficiency in reading, English Language Arts, and mathematics in order to promote to high school
- Final Grades for Math and ELA are averaged over 4 quarters to determine eligibility.
- Los estudiantes deben demostrar dominio en lectura, artes del lenguaje inglés y matemáticas para poder avanzar a la escuela secundaria.
- Las calificaciones finales de Matemáticas y ELA se promedian durante 4 trimestres para determinar la elegibilidad.

Promotion Ceremony Policy / Política de ceremonia de promoción

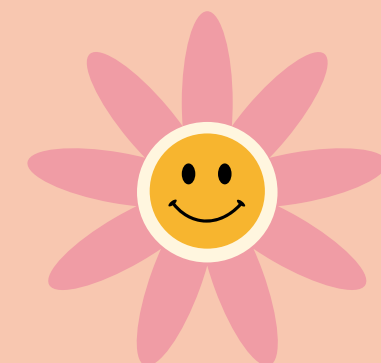
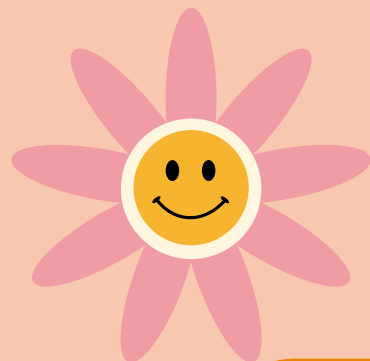
2

- In order to participate in the 8th grade Promotion Ceremony & 8th grade year-end activities, students must earn a 2.0 overall GPA ALL four quarter report cards.
- Students must also earn a passing grade of “D” (average over four quarters) or higher in English Language Arts (ELA) and mathematics.
- Para participar en la Ceremonia de Promoción de 8.º grado y en las actividades de fin de año de 8.º grado, los estudiantes deben obtener un GPA general de 2.0 en TODAS las boletas de calificaciones de los cuatro trimestres.
- Los estudiantes también deben obtener una calificación aprobatoria de “D” (promedio de cuatro trimestres) o superior en Artes del Lenguaje Inglés (ELA) y matemáticas.

SPUSD Board Policy 5123: students who do not show proficiency in Reading, English Language Arts, and Mathematics are at risk of being retained in the 8th grade and ineligible to promote to high school in the 25-26 school year.

Política 5123 de la Junta del SPUSD: los estudiantes que no demuestran competencia en lectura, artes del lenguaje inglés y matemáticas corren el riesgo de ser retenidos en el octavo grado y no son elegibles para ascender a la escuela secundaria en el año escolar 25-26.

PROMOTION EXAMPLES / EJEMPLOS DE PROMOCIÓN



1

PROMOTE TO 9TH GRADE / PROMOVER AL NOVENO GRADO

POINTS / PUNTOS:

A = 4 PTS, B = 3 PTS, C = 2 PTS, D = 1 PT, & F = 0 PTS.

- A STUDENT MUST HAVE A "D" AVERAGE (1.00 OR ABOVE) TO MEET MINIMUM REQUIREMENTS TO ATTEND HIGH SCHOOL. / UN ESTUDIANTE DEBE TENER UN PROMEDIO "D" (1.00 O SUPERIOR) PARA CUMPLIR CON LOS REQUISITOS MÍNIMOS PARA ASISTIR A LA ESCUELA SECUNDARIA
 - QUARTER 1 GRADE IN ELA OR MATHEMATICS = A 4 POINTS
 - CALIFICACIÓN DEL PRIMER TRIMESTRE EN ELA O MATEMÁTICAS = A 4 PUNTOS
 - QUARTER 2 GRADE IN ELA OR MATHEMATICS = D 1 POINTS
 - CALIFICACIÓN DEL PRIMER TRIMESTRE EN ELA O MATEMÁTICAS = A 4 PUNTOS
 - QUARTER 3 GRADE IN ELA OR MATHEMATICS = C 2 POINTS
 - CALIFICACIÓN DEL TERCER TRIMESTRE EN ELA O MATEMÁTICAS = C 2 PUNTOS
 - QUARTER 4 GRADE IN ELA OR MATHEMATICS = F 0 POINTS
 - CALIFICACIÓN DEL CUARTO TRIMESTRE EN ELA O MATEMÁTICAS = F 0 PUNTOS
- 7 POINTS DIVIDED BY 4 = 1.75 = ELIGIBLE TO PROMOTE BUT NOT ELIGIBLE FOR CEREMONY
 - 7 PUNTOS DIVIDIDOS POR 4 = 1,75 = ELEGIBLE PARA ASCENDER PERO NO ELEGIBLE PARA LA CEREMONIA

2

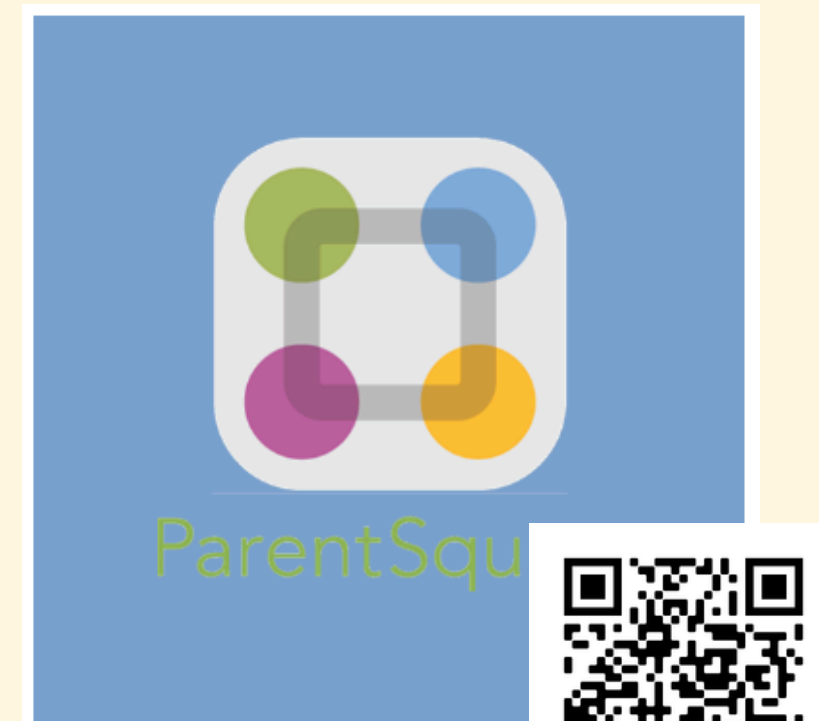
PARTICIPATE IN PROMOTION CEREMONY / PARTICIPAR EN LA CEREMONIA DE PROMOCIÓN

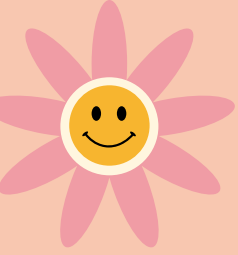
SAMPLE STUDENT PROMOTION CEREMONY
PARTICIPATION GPA / EJEMPLO DE GPA DE
PARTICIPACIÓN EN LA CEREMONIA DE PROMOCIÓN
ESTUDIANTIL:

- QUARTER 1 GPA = 2.25
 - GPA DEL PRIMER TRIMESTRE = 2.25
- QUARTER 2 GPA = 1.75
 - SEGUNDO TRIMESTRE = 1.75
- QUARTER 3 GPA = 2.75
 - TERCER TRIMESTRE = 2,75
- QUARTER 4 GPA AS OF MAY 24, 2024 = 1.50 = 8.25
DIVIDED BY 4 = 2.062
 - CUARTO TRIMESTRE AL 24 DE MAYO DE 2024 =
1.50 = 8.25 DIVIDIDO POR 4 = 2.062

PARENT SQUARE & PARENT CONNECT

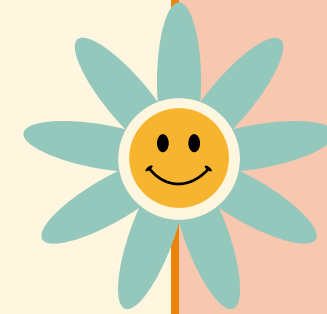
- PARENT CONNECT:
 - YOU MAY CHECK ATTENDANCE, GRADES, AND MISSING ASSIGNMENTS ON PARENT CONNECT.
 - PUEDE VERIFICAR LA ASISTENCIA, CALIFICACIONES Y TAREAS FALTANTES EN PARENT CONNECT.
- PARENT SQUARE:
 - SCHOOL COMMUNICATION TO PARENTS
 - COMUNICACION ESCOLAR A LOS PADRES
 - TEACHER AND PARENT COMMUNICATION
 - COMUNICACION ENTRE MAESTROS Y PADRES

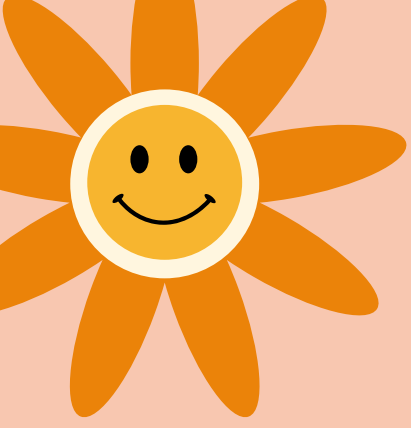




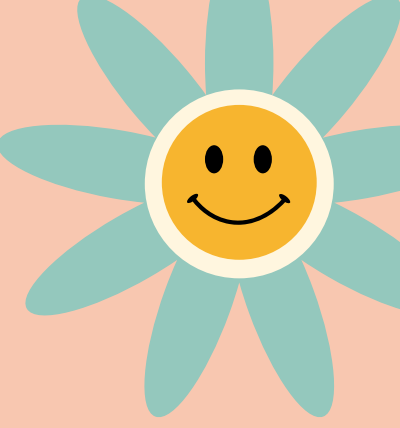
CONTACT INFORMATION / INFORMACION DEL CONTACTO

**Miss Limon
Outreach Specialist
805-933-8880 ext.21938
jlimon@santapaulausd.org**





AVID/LOPEZ



4 TYPES OF UNIVERSITIES

CC

CSU


UC

PRIVATE



CC - COMMUNITY COLLEGES

116



REQUIREMENTS TO ATTEND

1- COMPLETE AN ONLINE ORIENTATION

2- SUBMIT OFFICIAL TRANSCRIPTS

(H.S. RECORDS/AP SCORES/ANY OTHER COLLEGES YOU'VE ATTENDED)

3- COMPLETE THE (MAP) WORKSHOP

(WORKSHOP DESIGNED TO HELP SELECT COURSES FOR YOUR 1ST SEMESTER)

4- MEET WITH AN ACADEMIC COUNSELOR



CC - COMMUNITY COLLEGES

YOU WILL GRADUATE WITH:

1- OPTION TO TRANSFER TO A CSU/UC/PRIVATE UNIVERSITY

2- CAREER OR TECHNICAL TRAINING

(H.S. RECORDS/AP SCORES/ANY OTHER COLLEGES YOU'VE ATTENDED)

VENTURA PROMISE

COVERS ESSENTIAL FEES SUCH AS UNITS, HEALTH FEE, STUDENT CENTER FEE, & STUDENT REPRESENTATIVE FEE



VENTURA
COLLEGE



OXNARD
COLLEGE



MOORPARK
COLLEGE





CSU - CALIFORNIA STATE UNIVERSITIES

23


REQUIREMENTS TO ATTEND

1- A-G REQUIREMENTS

2- MINIMUM GPA OF A 2.5

(2.0 - 2.49 CAN STILL APPLY BUT MUST HAVE EXTRA CURRICULARS & MORE)

3- MUST HAVE A H.S. DIPLOMA OR TRANSFER CREDITS





CSU - CALIFORNIA STATE UNIVERSITIES

YOU WILL GRADUATE WITH:


1- B.A. OR B.S. DEGREE

2- MASTERS DEGREE

(DEPENDS ON YOUR FIELD OF STUDY I.E. EDUCATION / ARTS / LAWS)

3 - DOCTORATES DEGREE

(DEPENDS ON YOUR FIELD OF STUDY I.E. EDUCATION / PHILOSOPHY / PHARMACY)



CSU
NORTHRIDGE



CSU
CHANNEL
ISLANDS



CSU
LOS ANGELES





UC - UNIVERSITY OF CALIFORNIA UNIVERSITIES

10

REQUIREMENTS TO ATTEND

1- A-G REQUIREMENTS

2- MINIMUM GPA OF A 3.0

(2.5 - 2.9 CAN STILL APPLY BUT MUST HAVE EXTRA CURRICULARS & MORE)

3- MUST HAVE A H.S. DIPLOMA OR TRANSFER CREDITS

4- MUST ANSWER PIQS OR PERSONAL INSIGHT ?'S

UC ? # 7 - EVERYONE BELONGS TO MANY DIFFERENT COMMUNITIES AND/OR GROUPS DEFINED BY (AMONG OTHER THINGS) SHARED GEOGRAPHY, RELIGION, ETHNICITY, INCOME, CUISINE, INTEREST, RACE, IDEOLOGY, OR INTELLECTUAL HERITAGE. CHOOSE ONE OF THE COMMUNITIES TO WHICH YOU BELONG, AND DESCRIBE THAT COMMUNITY AND YOUR PLACE WITHIN IT. (350 WORD LIMIT).





UC - UNIVERSITY OF CALIFORNIA UNIVERSITIES

YOU WILL GRADUATE WITH:

1- B.A. OR B.S. DEGREE

2- MASTERS DEGREE

(DEPENDS ON YOUR FIELD OF STUDY I.E. EDUCATION / ARTS / LAWS)

3 - DOCTORATES DEGREE

(DEPENDS ON YOUR FIELD OF STUDY I.E. EDUCATION / PHILOSOPHY / PHARMACY)



UCSB



UCLA



UCR





PRIVATE UNIVERSITIES

110+



REQUIREMENTS TO ATTEND

- 1- A-G REQUIREMENTS
- 2- ADMISSIONS TEST (SAT/ACT/OWN TEST)
- 3- SOME FORM OF PERSONAL ESSAY OR INSIGHT ?'S
- 4- EXTRACURRICULAR ACTIVITIES
- 5- IT DEPENDS ON UNIVERSITY?



PRIVATE UNIVERSITIES

YOU WILL GRADUATE WITH:

1- B.A. OR B.S. DEGREE

2- MASTERS DEGREE

(DEPENDS ON YOUR FIELD OF STUDY I.E. EDUCATION / ARTS / LAWS)

3 - DOCTORATES DEGREE

(DEPENDS ON YOUR FIELD OF STUDY I.E. EDUCATION / PHILOSOPHY / PHARMACY)



CAL
LUTHERAN

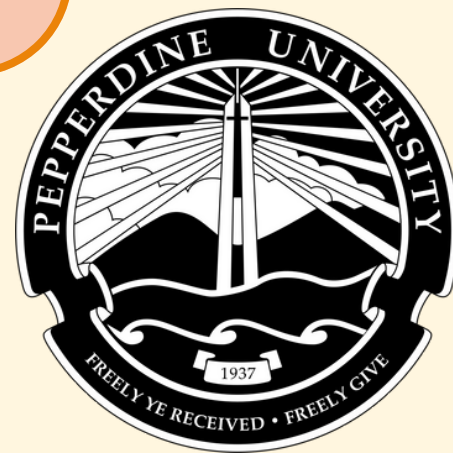


THOMAS
AQUINAS

*Cal
Lutheran*



PEPPERDINE





UCSB

