



# Hockinson Middle School

10/18/24 Community Tour



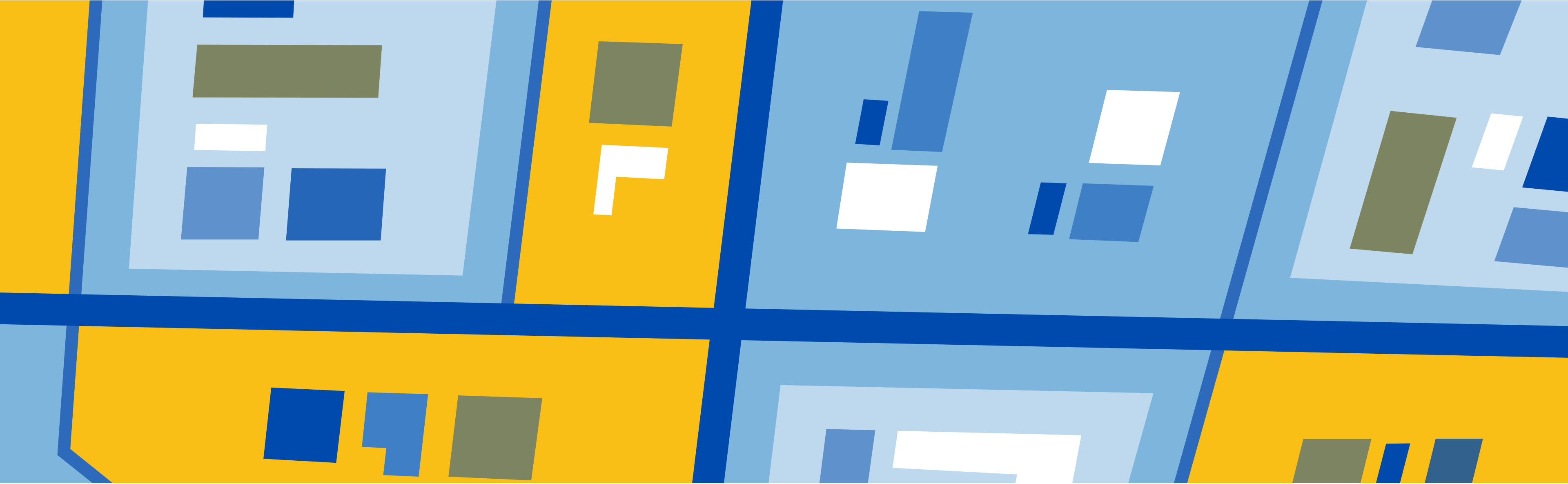
# Introductions

Sid Slom, **Dean of Students & Athletic Director**

Bess Colpron, **Principal**







# Student Learning

Academics & Behavior



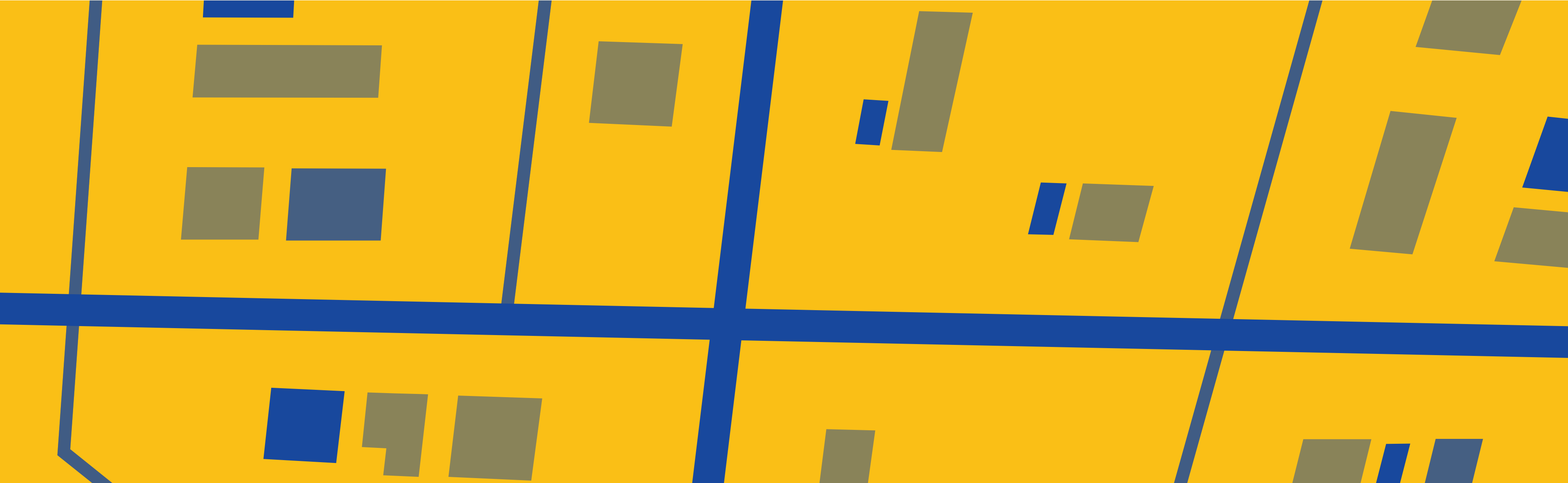
# What are your coordinates?

**Know your coordinates.**

**Know your student's coordinates.**

Navigate the coordinates to meet them where they are and bring them where they need to be.





# Academic Coordinates

All Kids. All Day.



# Smarter Balance Coordinates

**56.3%**  
**MATH**  
State Average: 37.6%

**69.7%**  
**ELA**  
State Average: 49.7%

**49%**  
**SCIENCE**  
State Average: 42%



# Smarter Balance Coordinates

## **ELA Standards Strands**

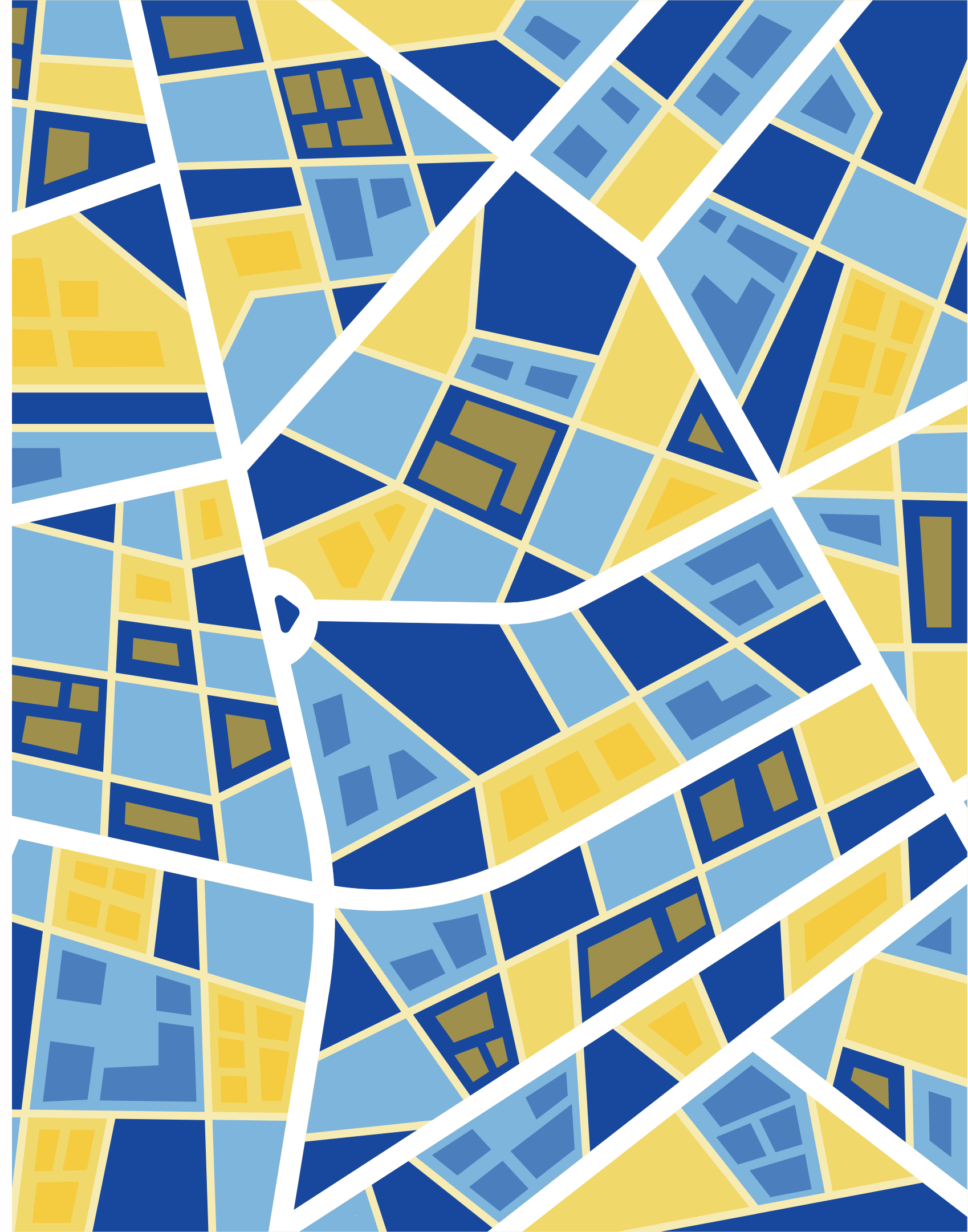
26 standards are assessed

On average, we performed above the previous  
year on 56% of those standards

## **Math Standards Strands**

10 standards are assessed

On average, we performed above the previous  
year on 56% of those standards





# Staff Coordinates

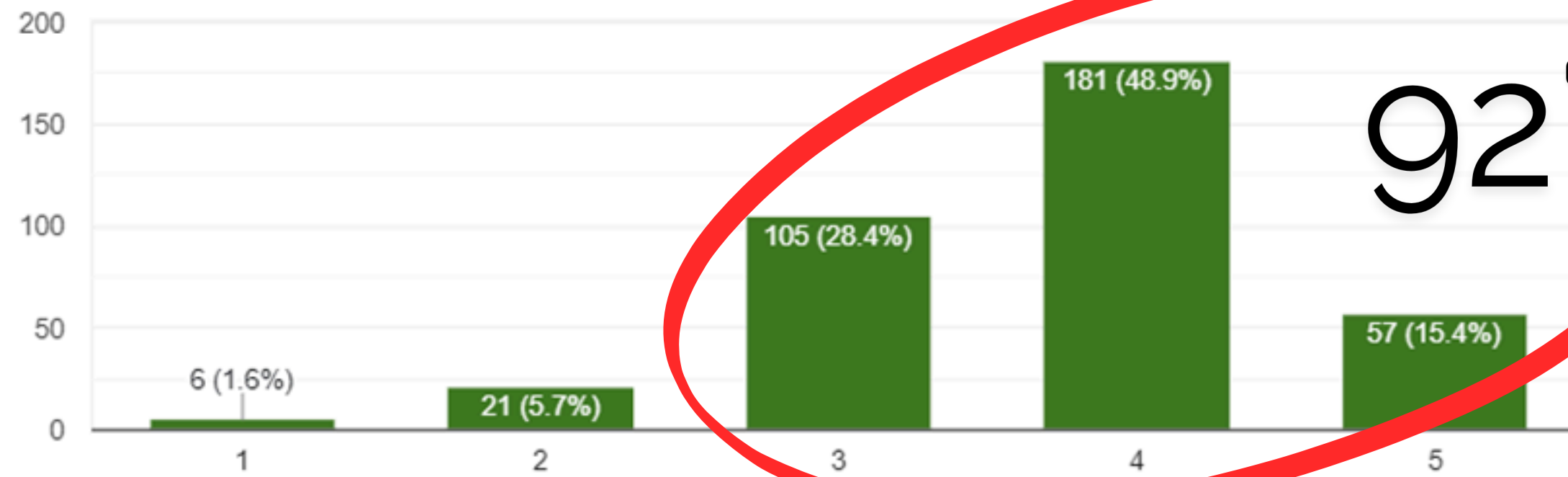
- Looking at data, not shying away from it
- Grouping students to target skill deficits - SGGs
- High Leverage Practices
  - Feedback
  - Active Engagement
  - Opportunities to Respond



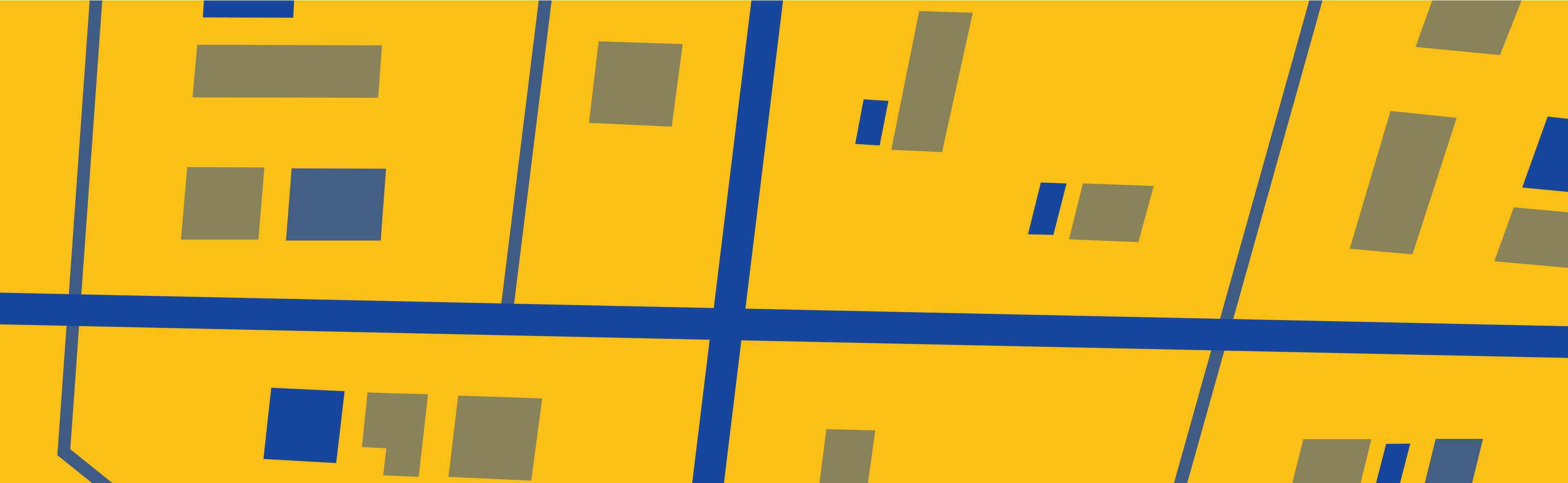
How would you rate your academic experience this year?

 Copy

370 responses



Student Coordinates



# Culture Coordinates

All Kids. All Day.





**We have the absolute BEST kids!**

AND we have a FANTASTIC & AMAZING community supporting us!



# Schools on the Rise Award

- Celebrates schools where students and adults collaborate to improve culture and amplify student voice
- Hundreds of schools applied, we were one of 21 schools
- Only TWO middle schools were selected

**If you were to visit HMS, you would see...**

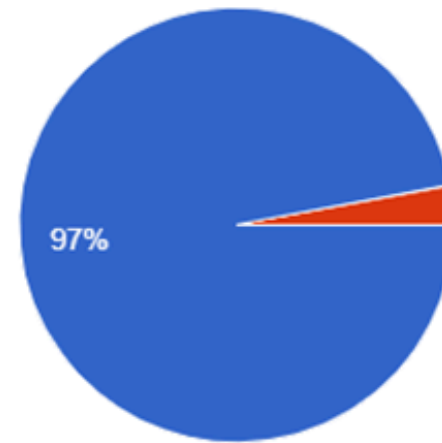




# Student Coordinates

Do you have a friend or friends that you can hang out with at lunch?

370 responses



● Yes  
● No

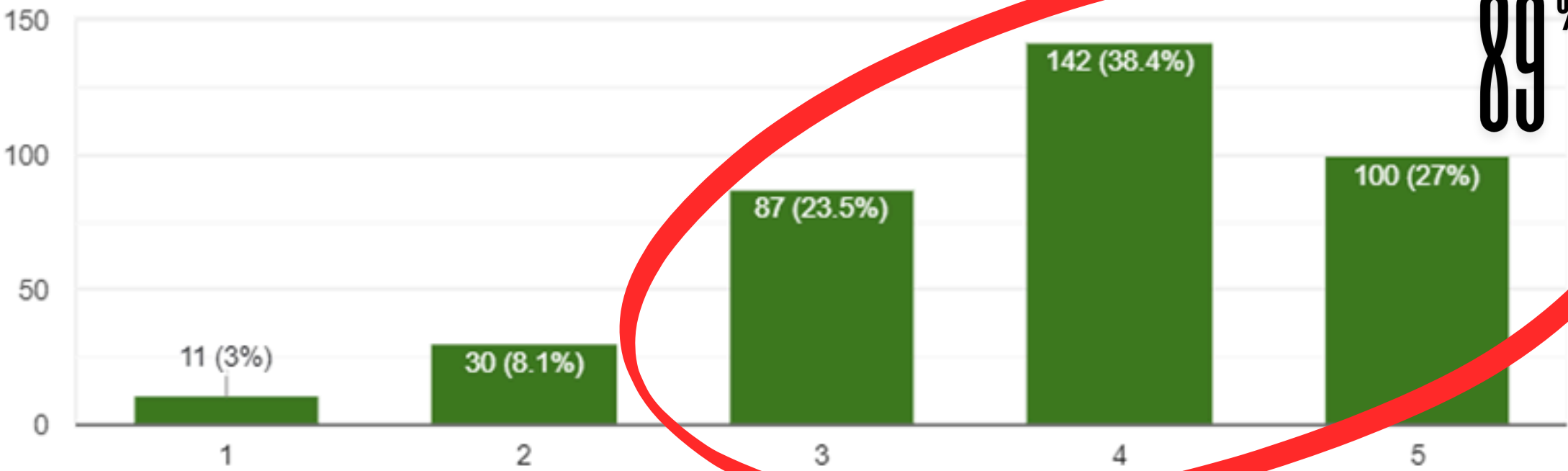
 Copy



How would you rate the HMS community (sense of belonging, feeling connected to the school) this year?

 Copy

370 responses



Student Coordinates

# Navigating Belonging

- Connection through activities
  - Clubs, Athletics, School Events
- Increase Leadership presence & voice
- Student Voice
- Responding vs. Reacting
- Restorative Conversations
- Get to know each student
- Personal connection
- Greeting at the start, end, in-between
- Follow through & accountability

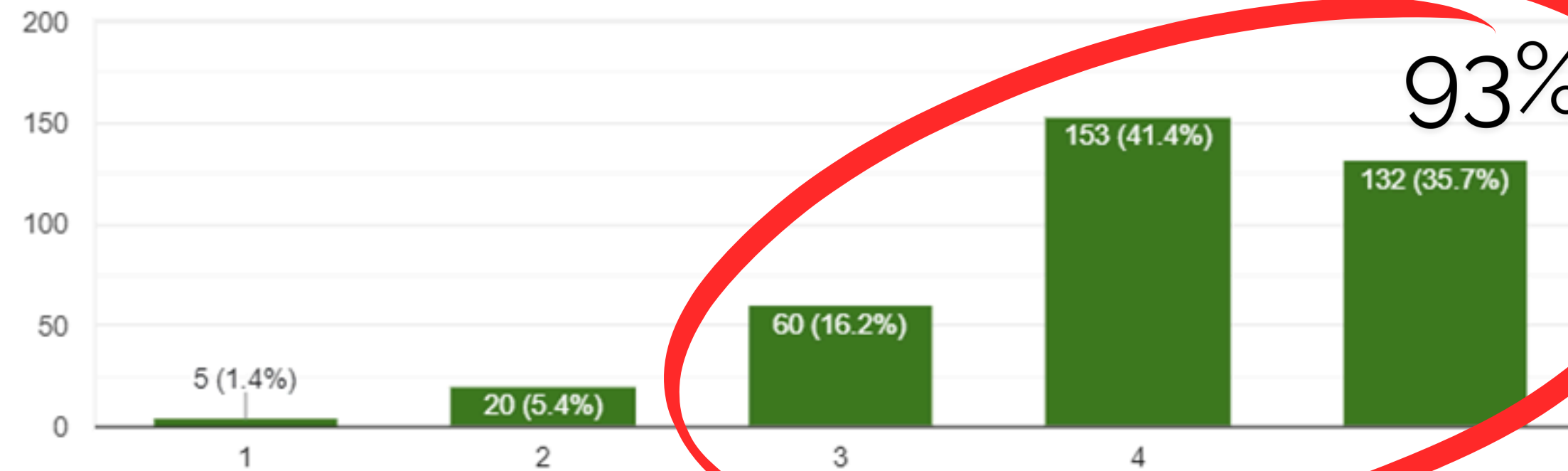




How would you rate school safety this year?

 Copy

370 responses



93%

Student Coordinates

An abstract geometric pattern on the left side of the slide, featuring various yellow and blue shapes (squares, rectangles, triangles) separated by white lines, creating a complex, interlocking design.

# Coordinating Safety

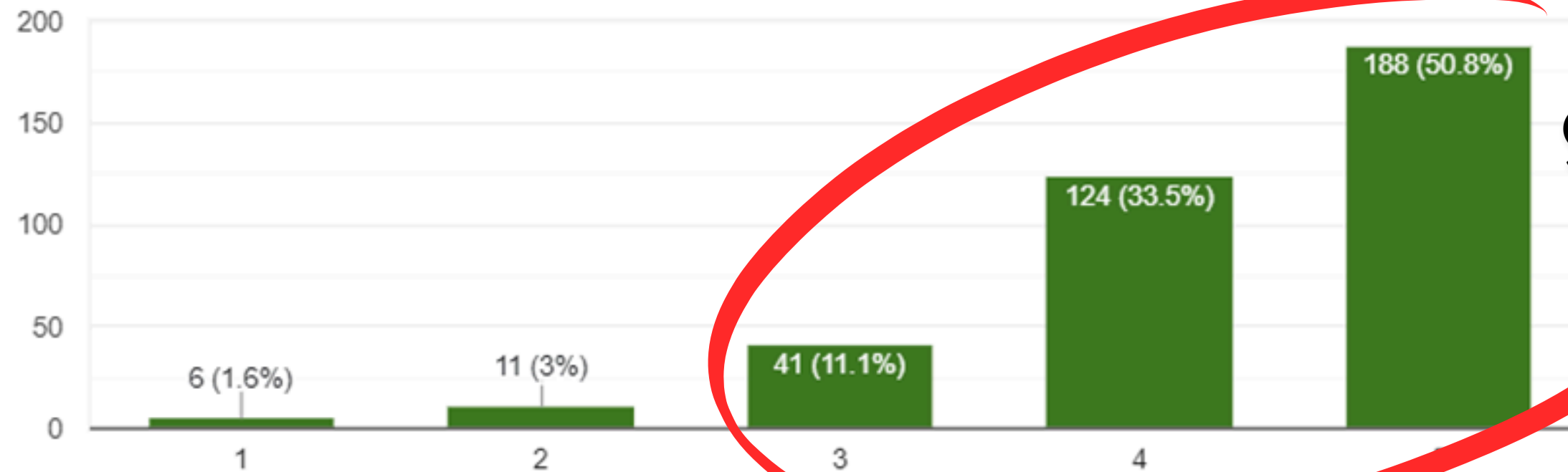
- Practice
- Introduce different scenarios
- Collaborate with community services
- Debrief and make changes
- Over communicate
- Flexible in our thinking

# Student Coordinates

How would you rate the HMS school spirit this year?

 Copy

370 responses



95%



# School Spirit Coordinates

## First Spirit Week

Monday: Country vs. Rock & Roll 46.7%

Tuesday: Nike vs. Adidas 78.9%

Wednesday: Sports Day 62.3%

Thursday: Twin Day 54.6%

Friday: Color Wars 93.6%

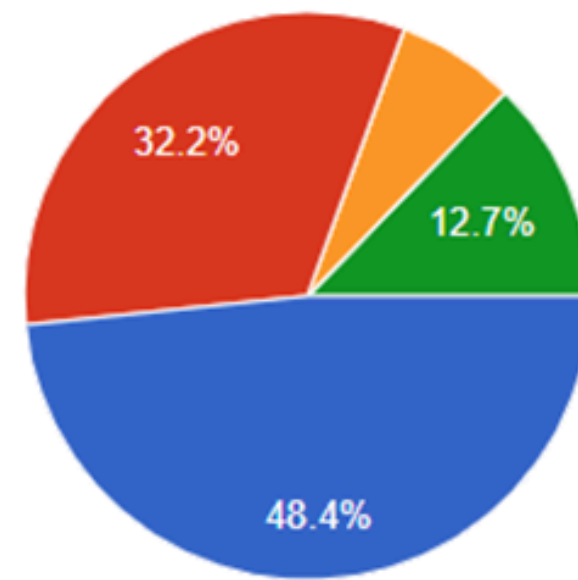




Thinking about your overall experience as an HMS student, which one best describes your year?

370 responses

 Copy



- This year is going better than last year
- This year is about the same as last year
- The year is worse than last year
- I did not attend HMS last year

# Student Coordinates



# Culture Cultivating Events

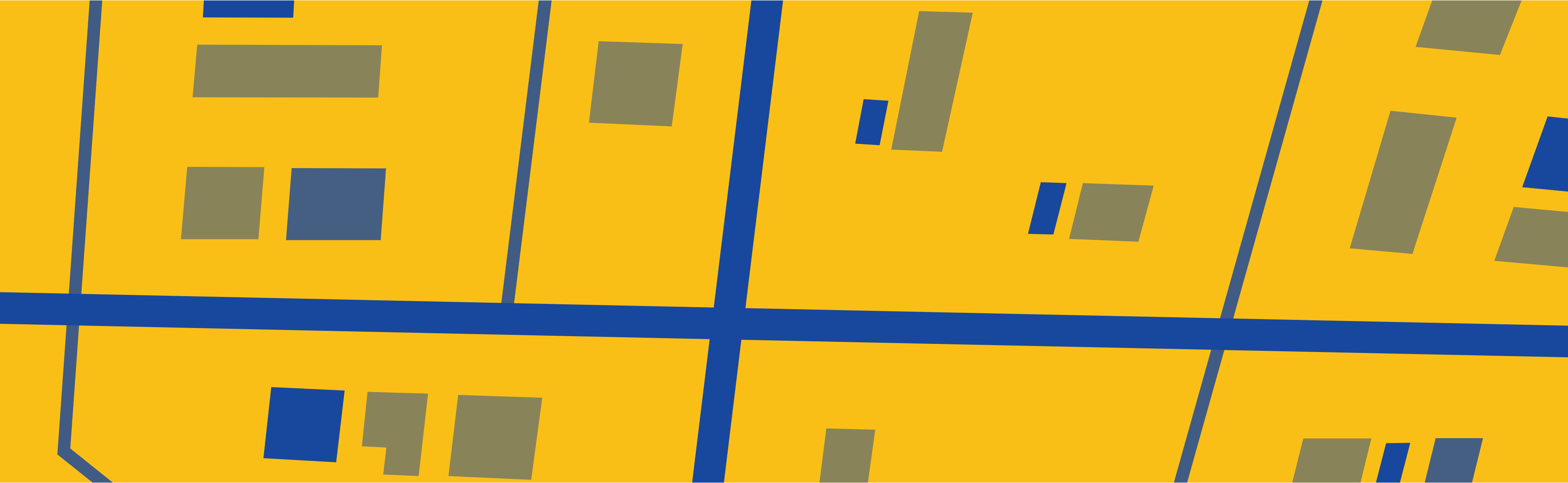
- Volleyball-a-thon
- Spirit Weeks
- Food Drive
- School Socials
- Homebase activities
- Athletics & Clubs











# Facilities Coordinates

All Kids. All Day.





# Track Slope

- Earth Day project for our community
- Project completed with donations and purchased supplies
- Group effort





# Safety Gates

- Manage traffic flow during events
- Provides structure & Safety





# Safety Fencing

- Boundaries for students
- Limits access to campus during the day
- Essential part of our campus





## **New ASB Window**

- Meeting student & family needs
- Cost effective
- Repurposing a usable space

# Preventative Measures

- Consistent HVAC Cleaning
- Careful cleaning and regular repairs
- Addressing issues immediately
- Daily & Monthly established routines



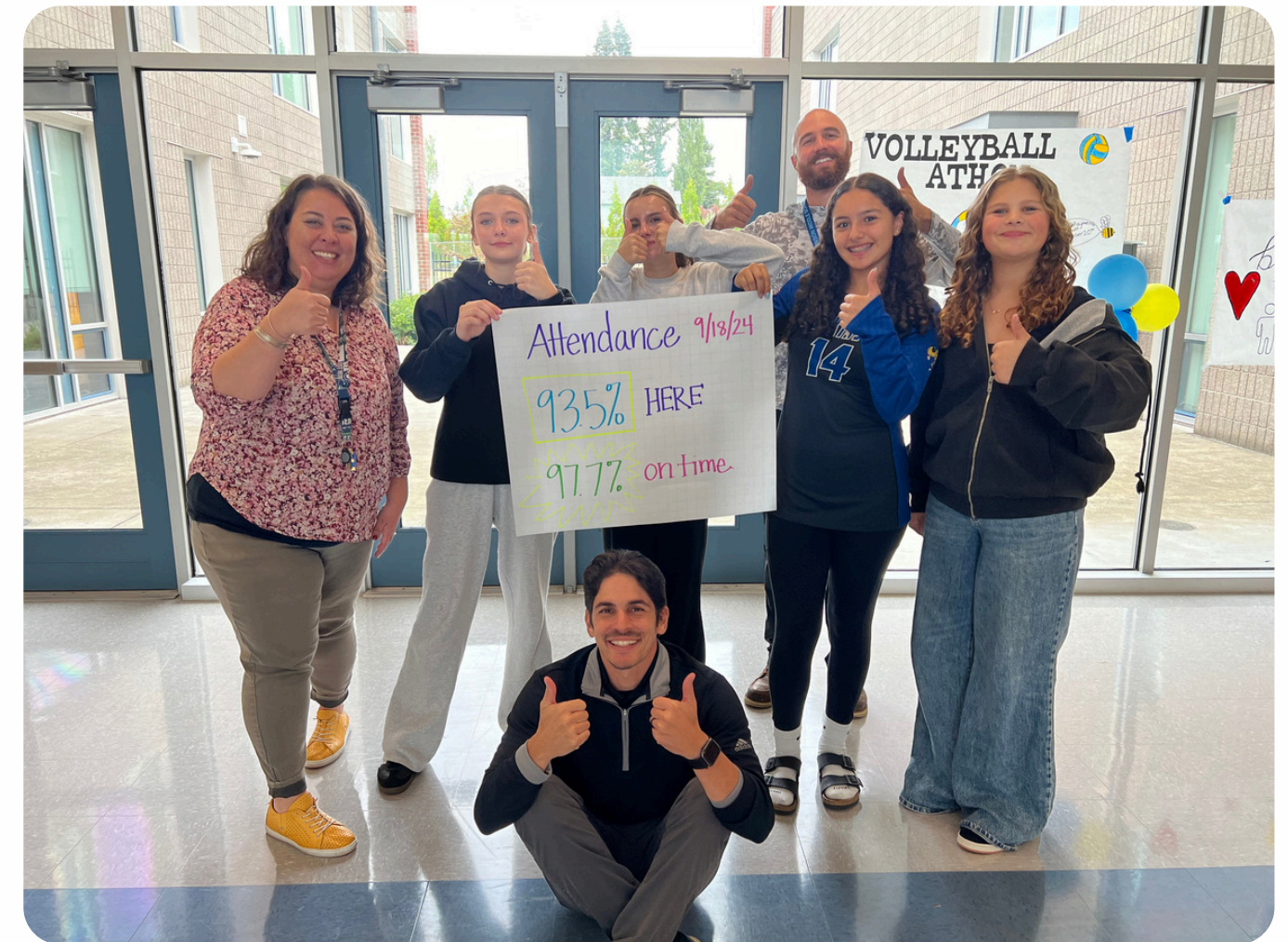
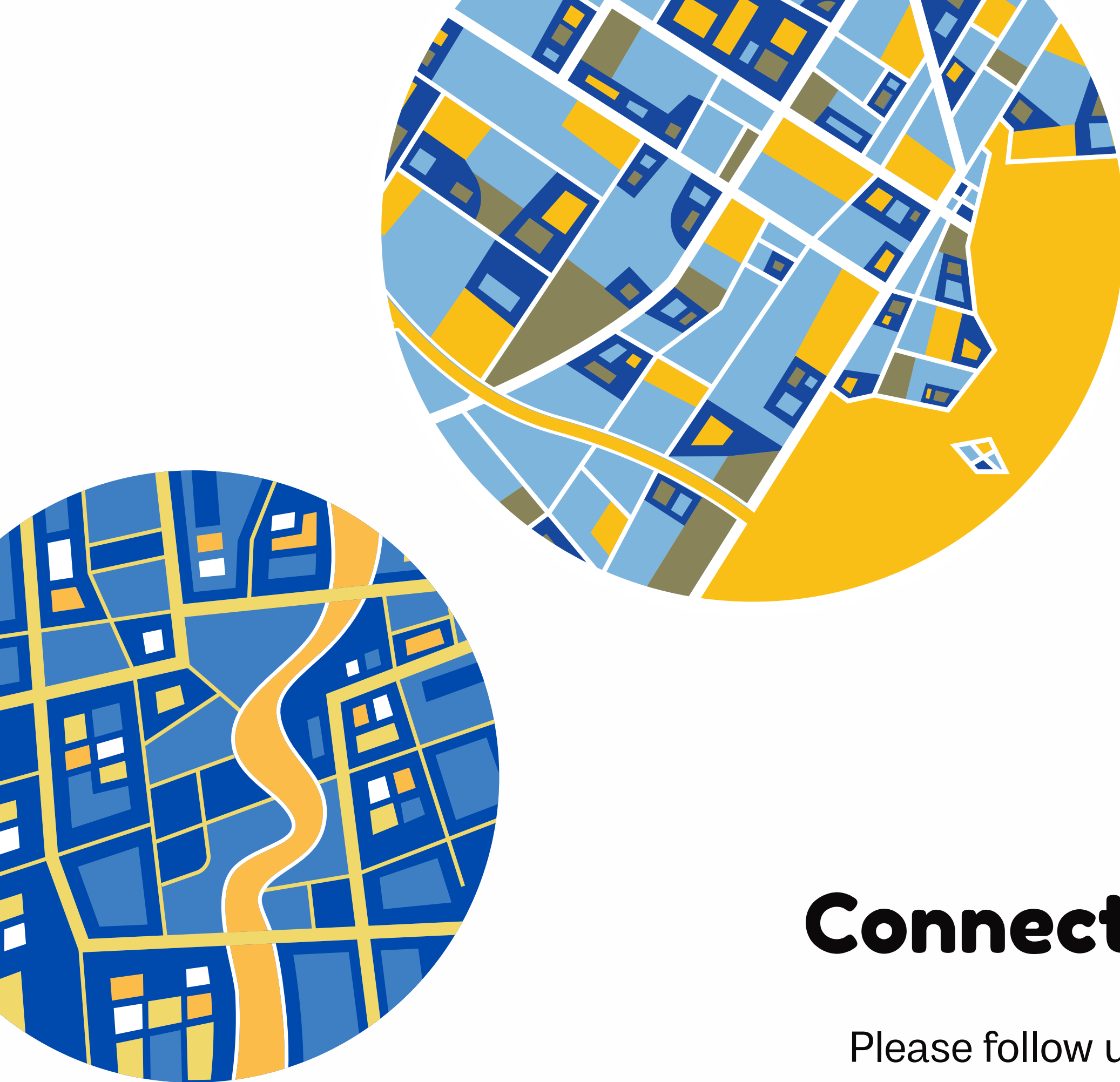


# Looking to the future...

- Covered outside play area







# Connection Coordinates

Please follow us on Facebook and Instagram!





# Thank you for coming!

We are so happy you joined us today!