



Lynbrook HS Classrooms Modernization Part 2 and 3

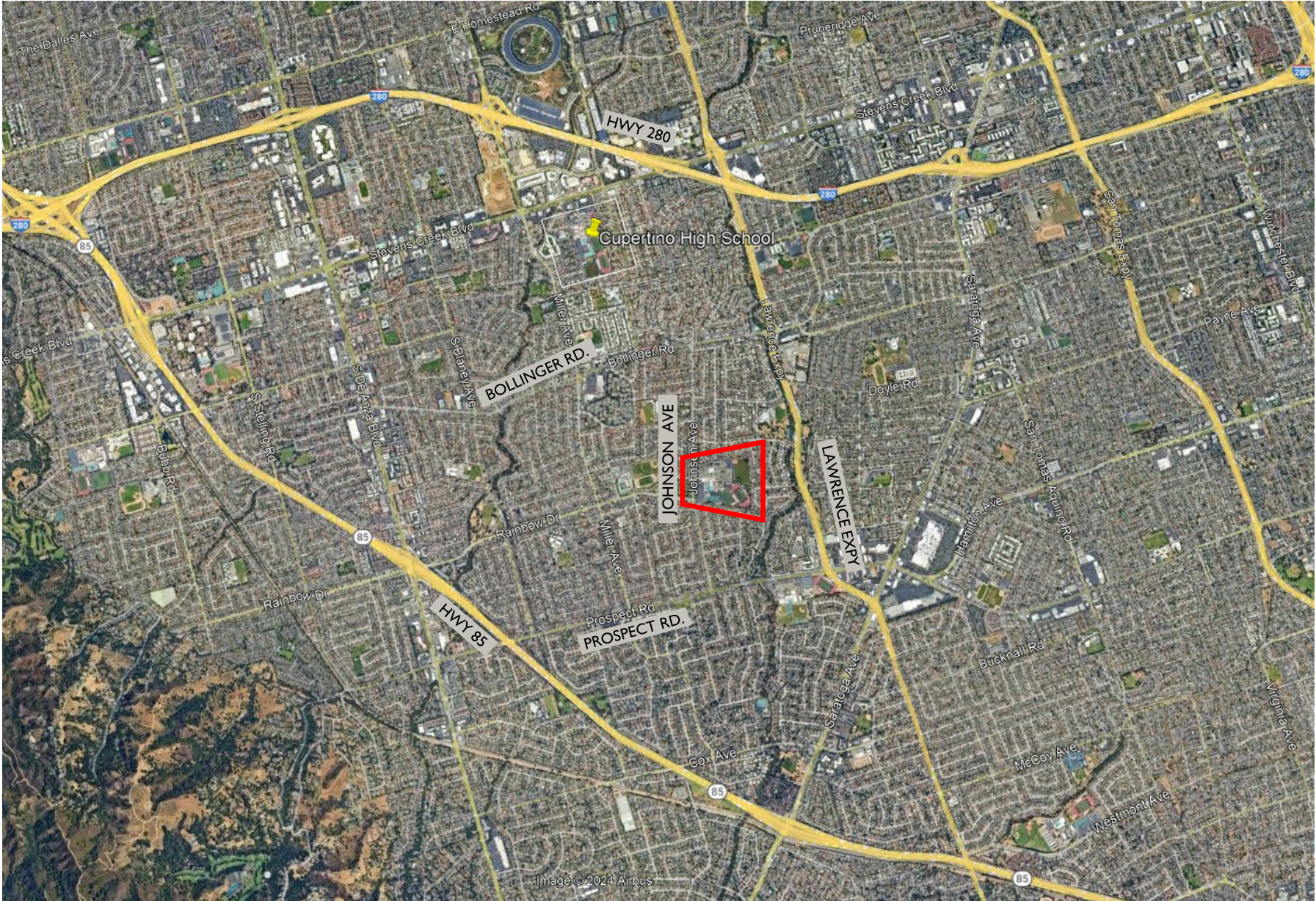
Informational Meeting
October 14, 2024



QUATTROCCHI KWOK
ARCHITECTS

Lynbrook High School – Location

At Lynbrook High 1280 Johnson Ave. San Jose, CA 95129



Lynbrook High School – Aerial View

- Classroom Modernization Project.
- 7 buildings over 3 phases
- This is phase 2 and 3

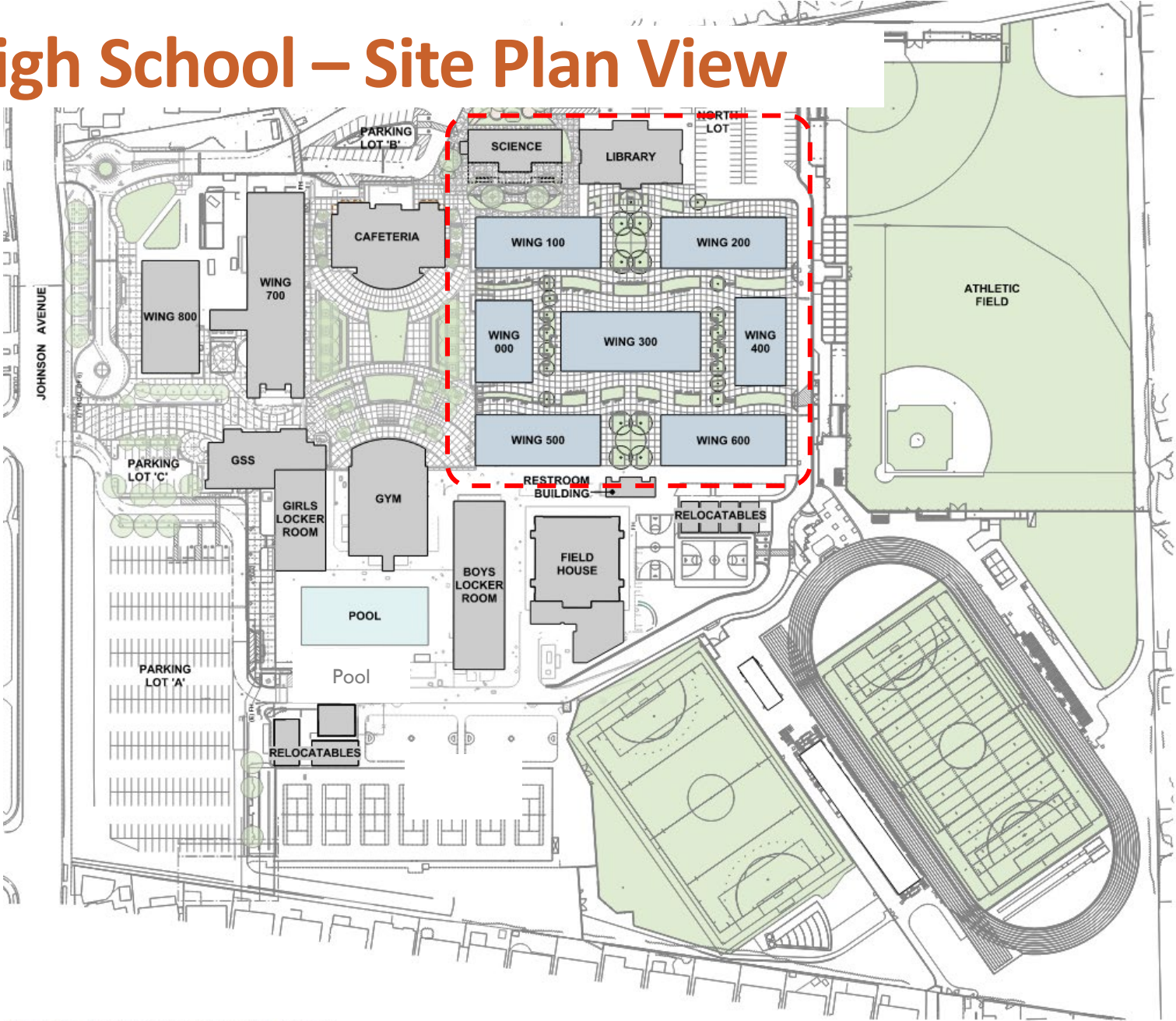


Lynbrook High School – Aerial View

- Classroom Modernization Project.
- 7 buildings over 3 phases
- This is phase 2 and 3



Lynbrook High School – Site Plan View



Lynbrook High School – Building Scope



Lynbrook High School – Building Scope

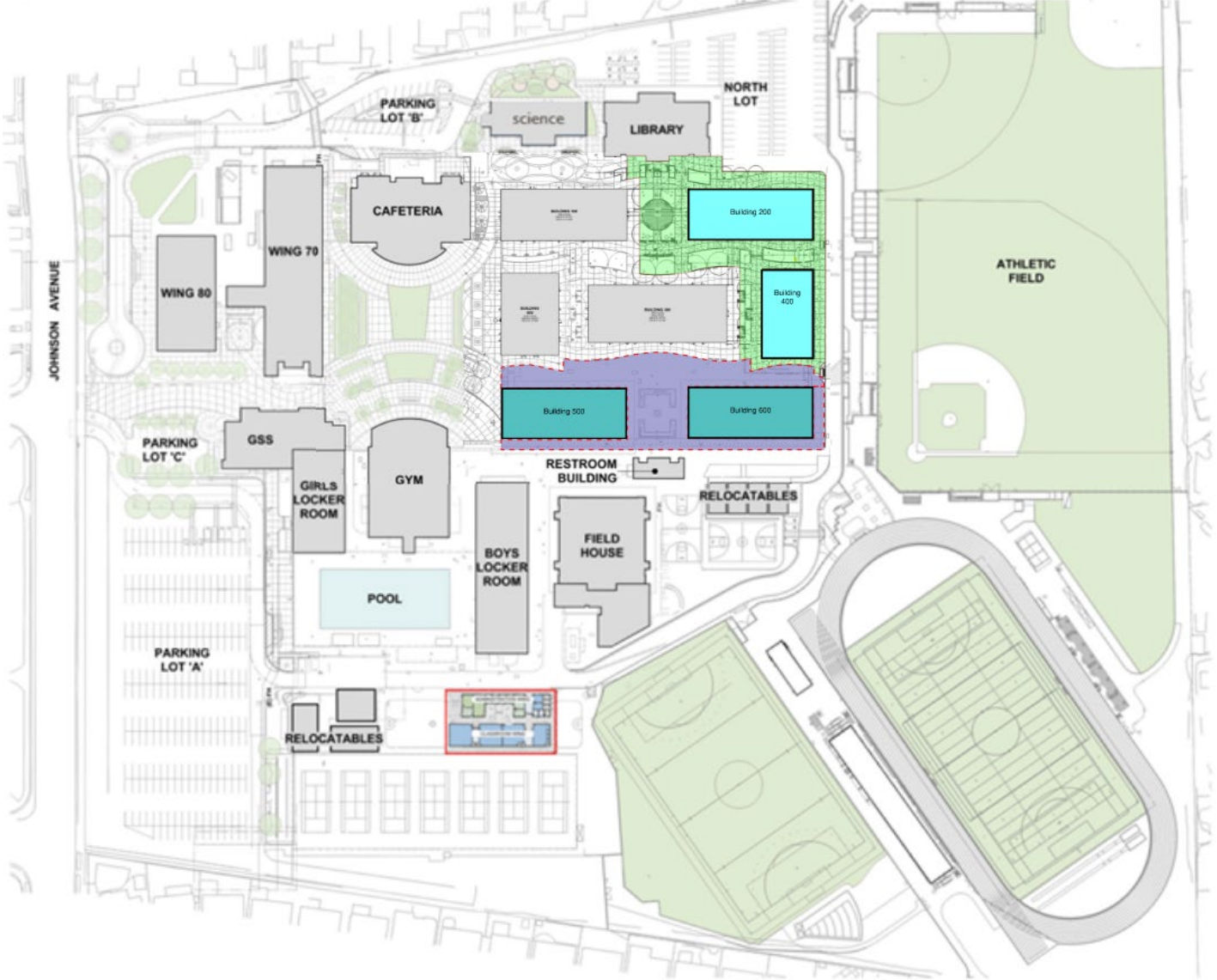


WING 200

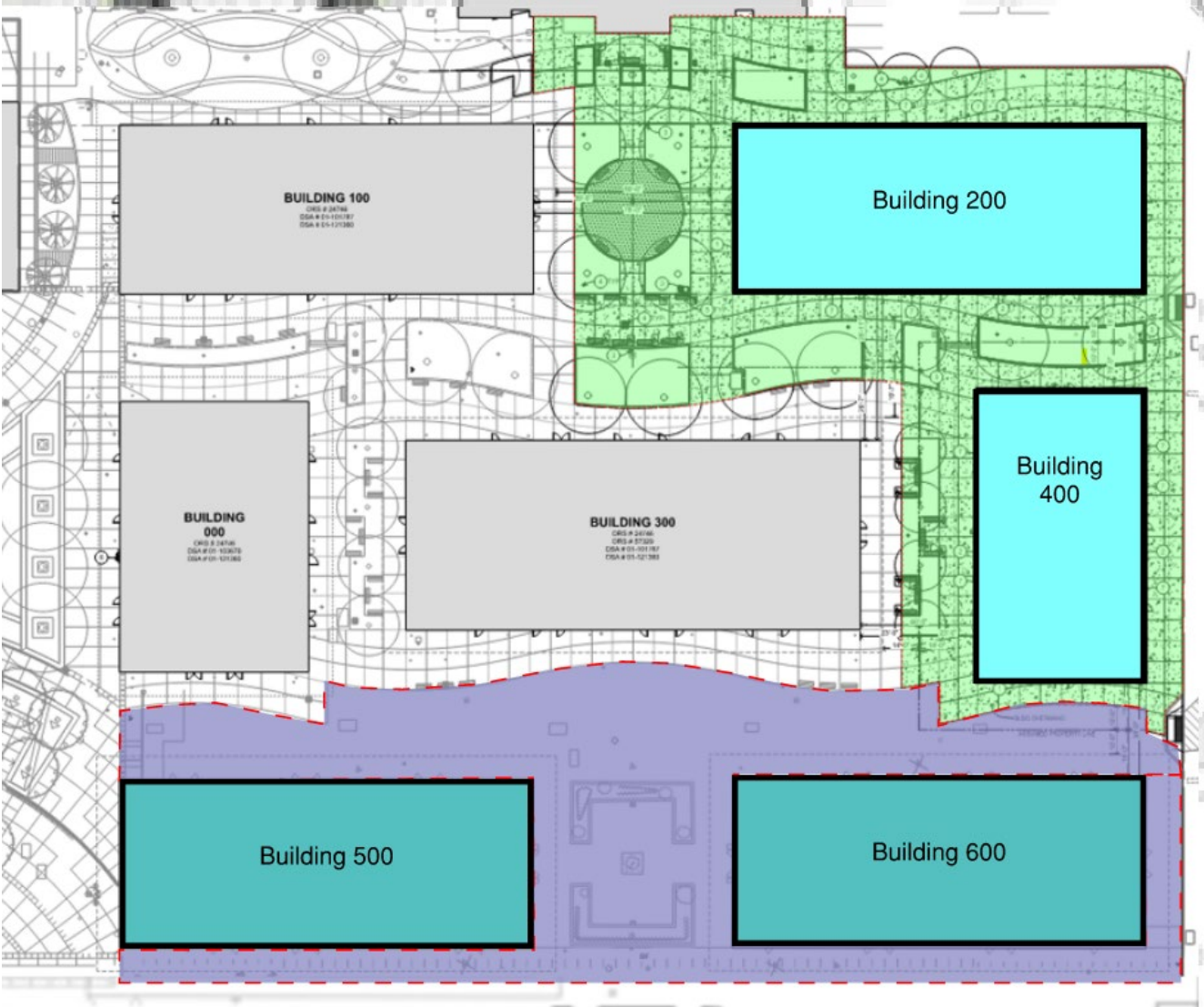


WING 400

Lynbrook High School – Site Work Scope



Lynbrook High School – Site Work Scope



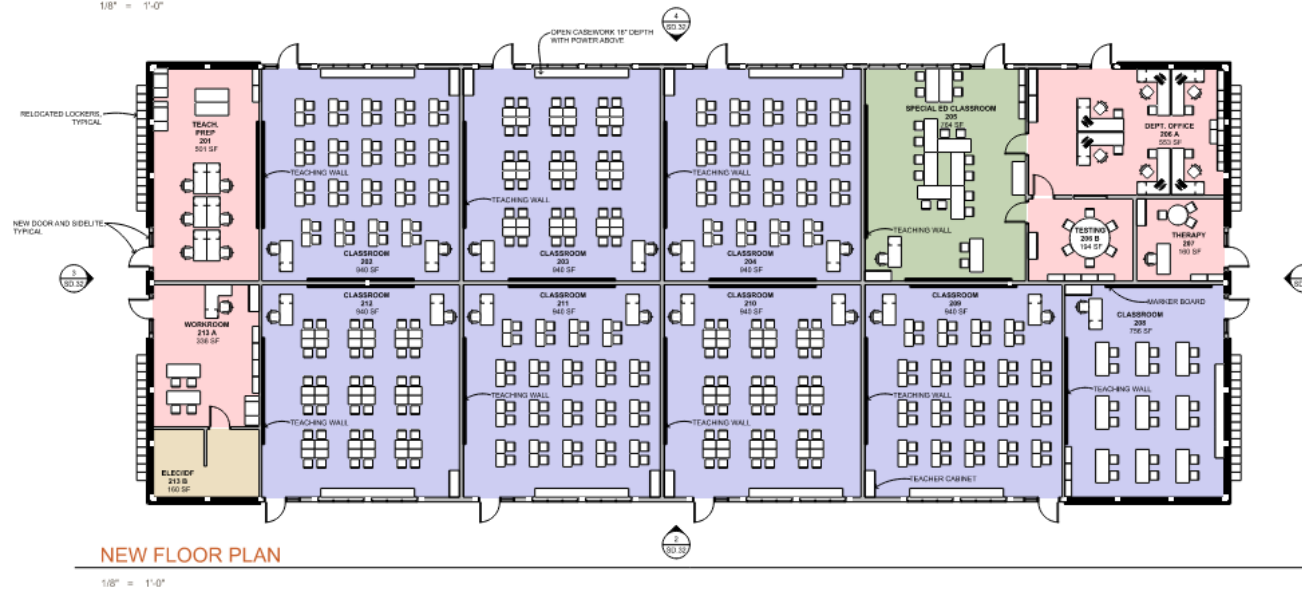
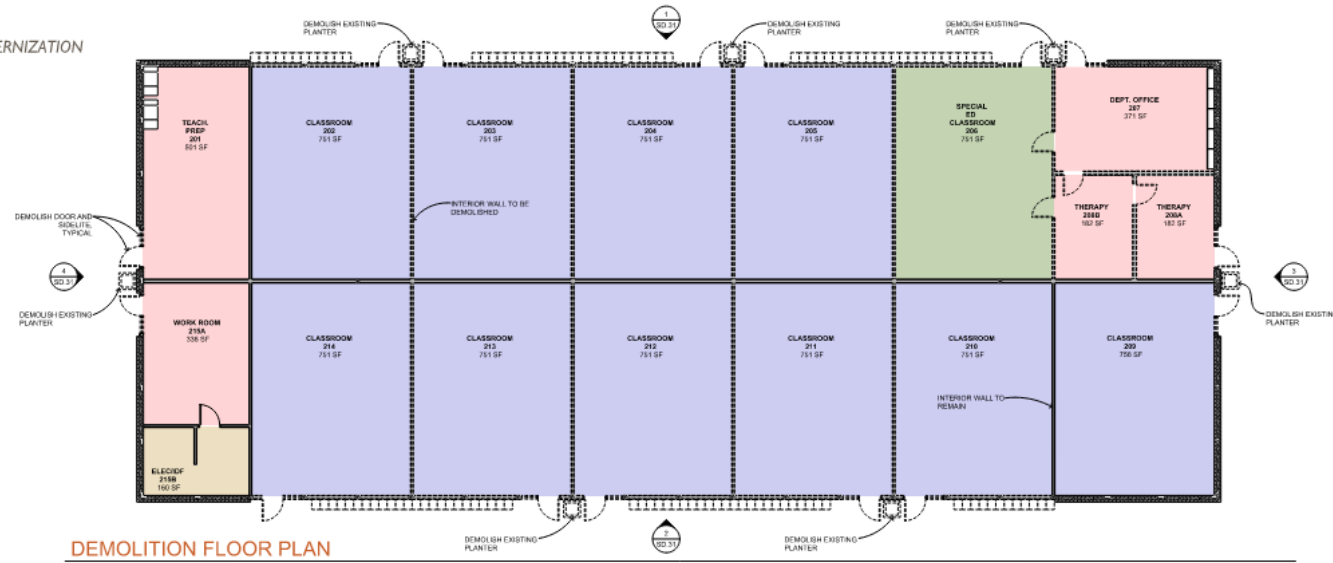
Demolition and Floor Plan Building 200

BUILDING 200
LYNBROOK HIGH SCHOOL | PH 4 MODERNIZATION



LEGEND

- CIRCULATION
- ADMINISTRATION
- CLASSROOM
- CLASSROOM ACCESSORY
- CLASSROOM SPECIALTY
- SCIENCE CLASSROOM
- SPECIAL ED CLASSROOM
- RESTROOM
- STORAGE / ELECTRICAL



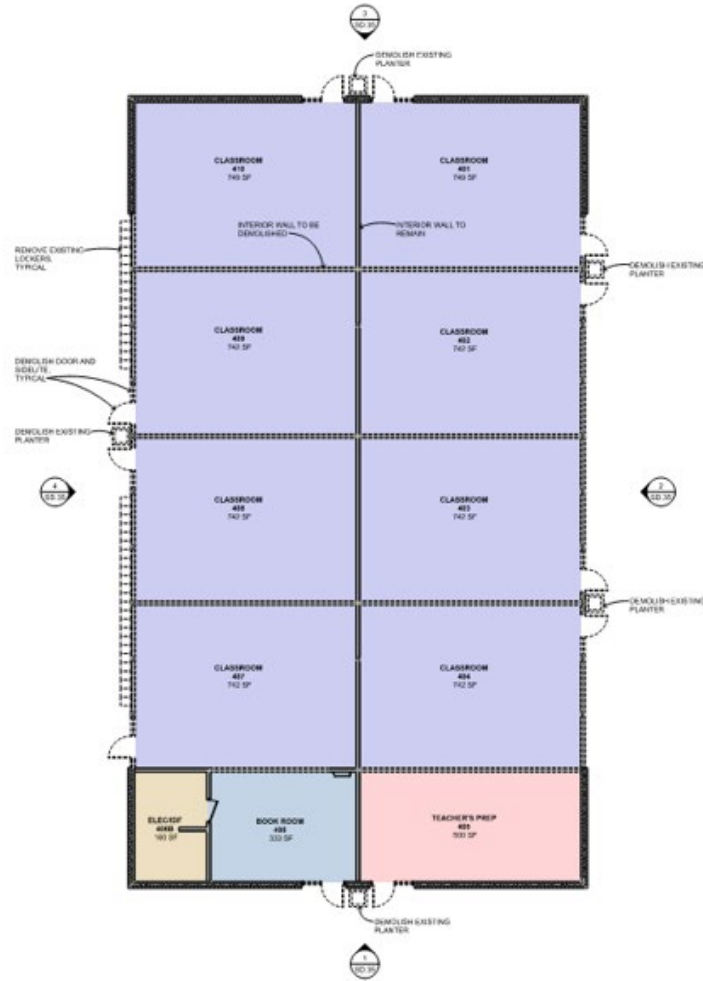
Demolition and Floor Plan Building 400

BUILDING 400

LYNBROOK HIGH SCHOOL | PH 4 MODERNIZATION

LEGEND

- CIRCULATION
- ADMINISTRATION
- CLASSROOM
- CLASSROOM ACCESSORY
- CLASSROOM SPECIALTY
- SCIENCE CLASSROOM
- SPECIAL ED CLASSROOM
- RESTROOM
- STORAGE / ELECTRICAL



DEMOLITION FLOOR PLAN

1/8" = 1'-0"



NEW FLOOR PLAN OPTION 1

1/8" = 1'-0"

Demolition and Floor Plan Building 500

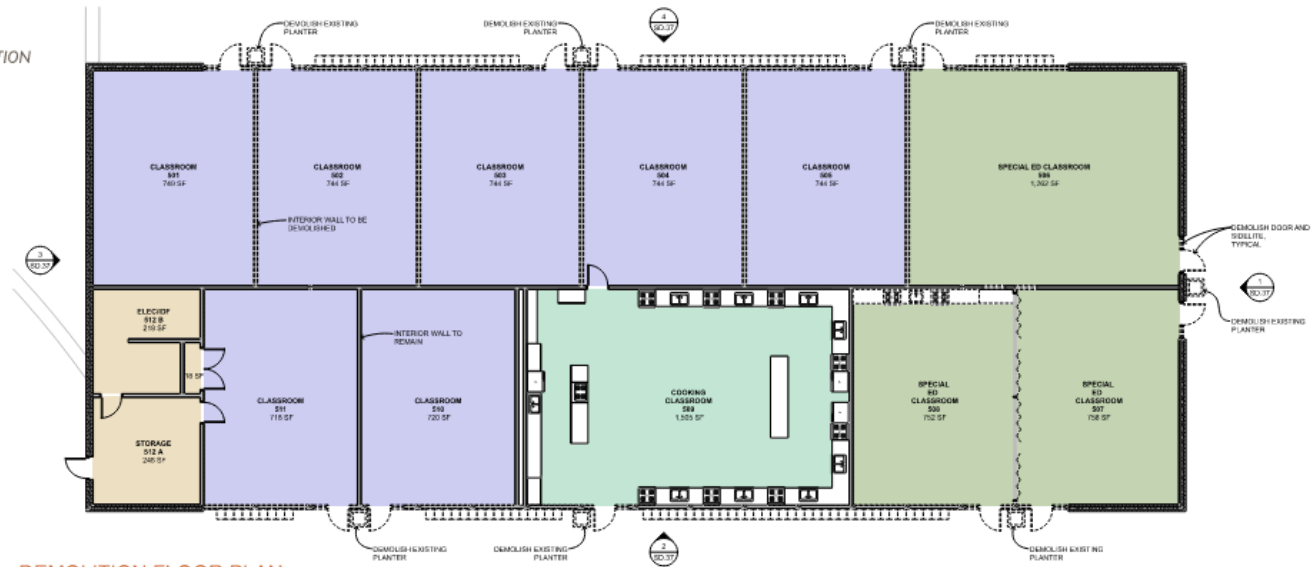
BUILDING 500

LYNBROOK HIGH SCHOOL | PH 4 MODERNIZATION



LEGEND

- CIRCULATION
- ADMINISTRATION
- CLASSROOM
- CLASSROOM ACCESSORY
- CLASSROOM SPECIALTY
- SCIENCE CLASSROOM
- SPECIAL ED CLASSROOM
- RESTROOM
- STORAGE / ELECTRICAL



DEMOLITION FLOOR PLAN

1/8" = 1'-0"



NEW FLOOR PLAN

1/8" = 1'-0"

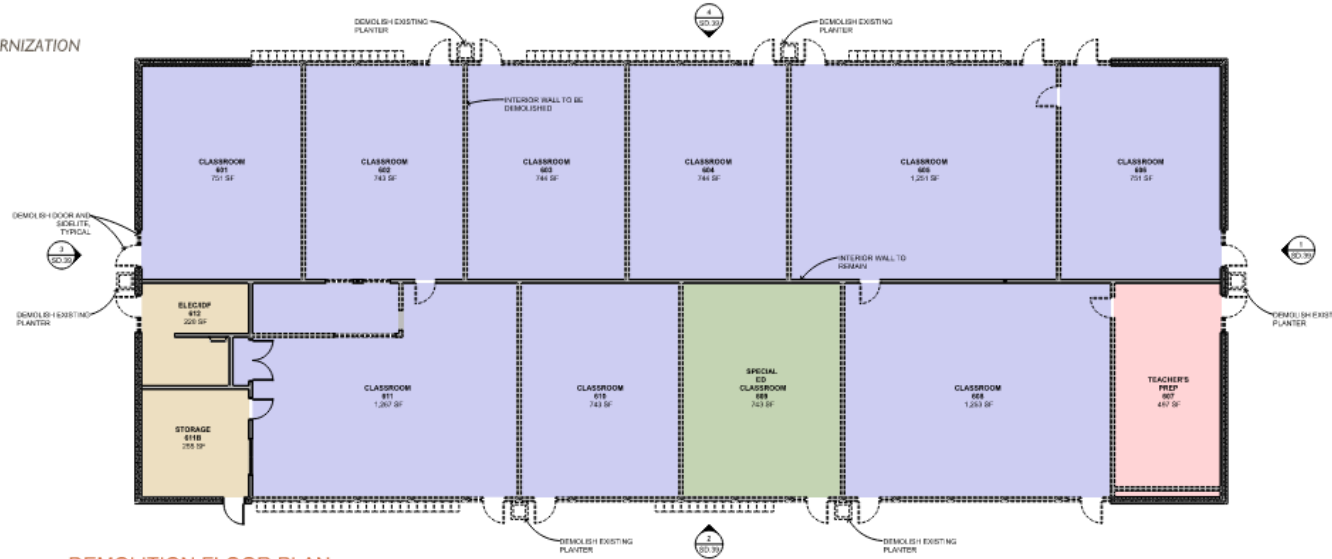
Demolition and Floor Plan Building 600

BUILDING 600
LYNBROOK HIGH SCHOOL | PH 4 MODERNIZATION



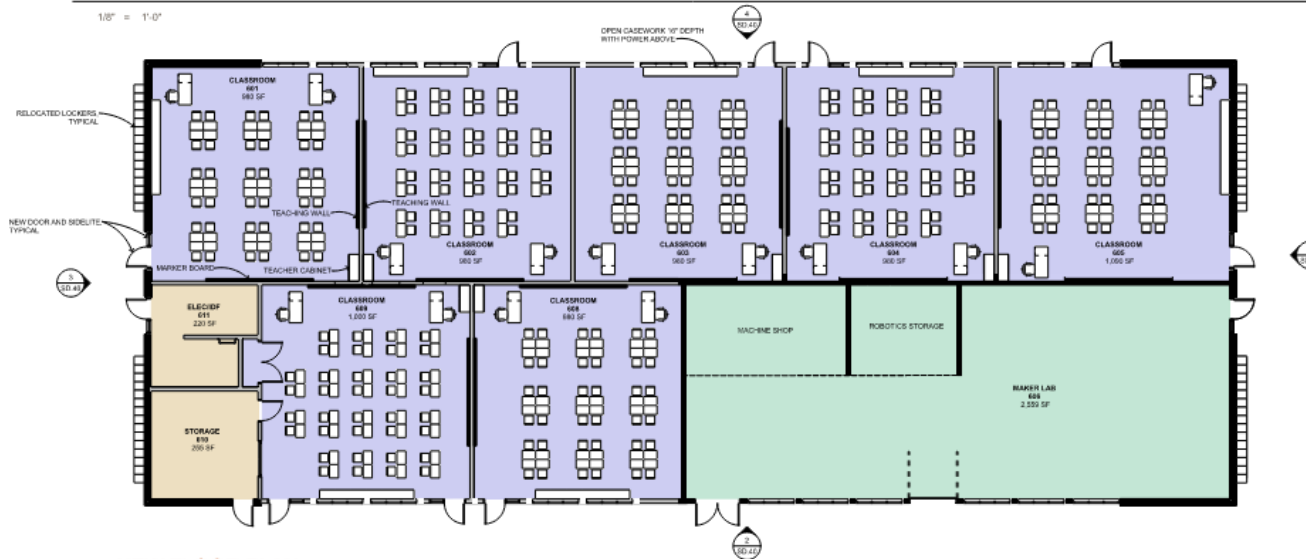
LEGEND

- CIRCULATION
- ADMINISTRATION
- CLASSROOM
- CLASSROOM ACCESSORY
- CLASSROOM SPECIALTY
- SCIENCE CLASSROOM
- SPECIAL ED CLASSROOM
- RESTROOM
- STORAGE / ELECTRICAL



DEMOLITION FLOOR PLAN

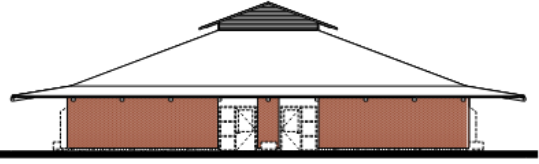
1/8" = 1'-0"



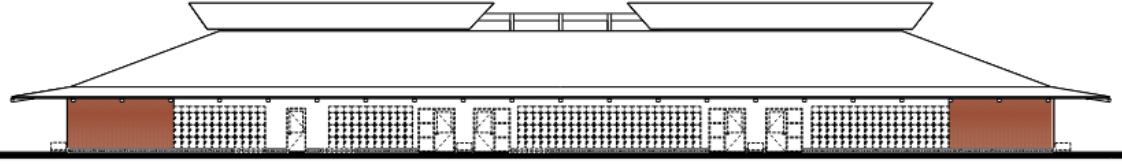
NEW FLOOR PLAN

1/8" = 1'-0"

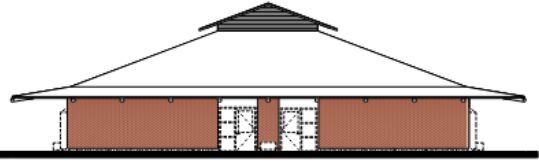
Sample Elevations



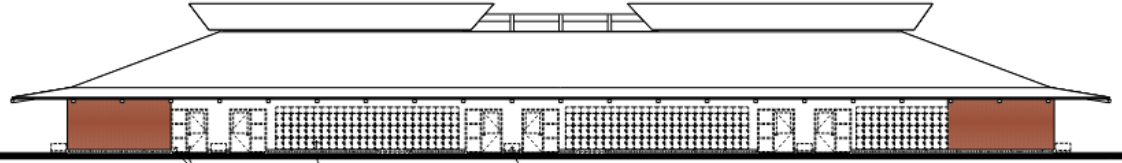
BUILDING 100 EAST DEMOLITION ELEVATION



BUILDING 100 SOUTH DEMOLITION ELEVATION



BUILDING 100 WEST DEMOLITION ELEVATION



BUILDING 100 NORTH DEMOLITION ELEVATION



BUILDING 100 EAST ELEVATION



BUILDING 100 SOUTH ELEVATION



BUILDING 100 WEST ELEVATION

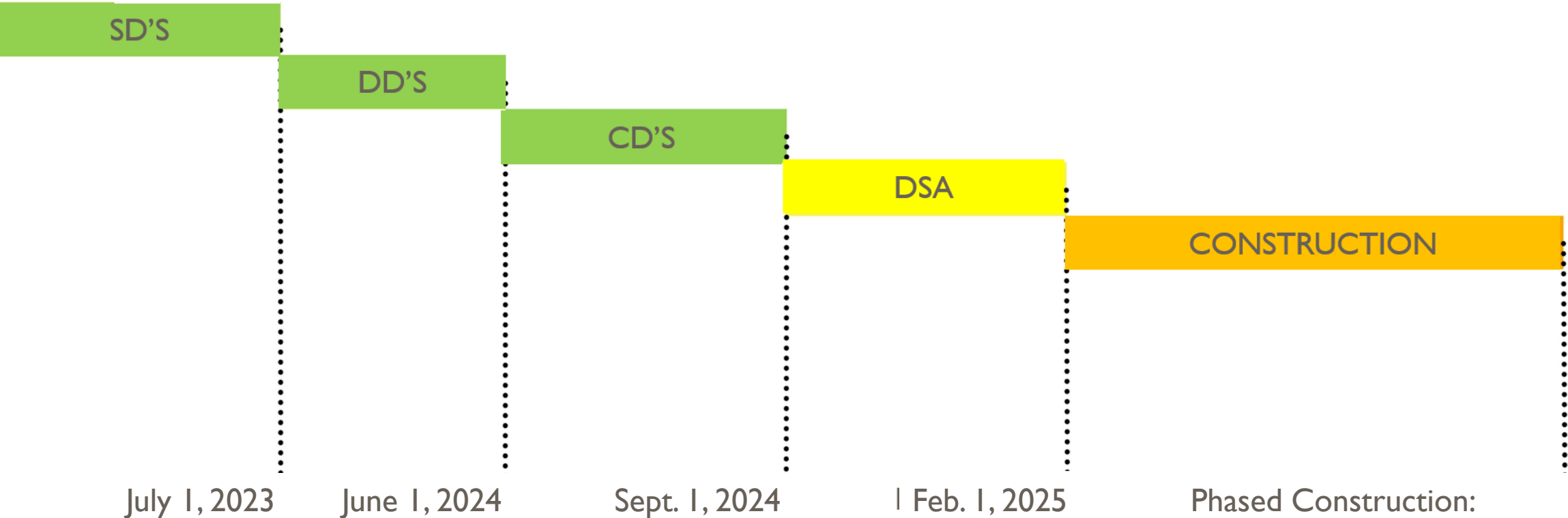


BUILDING 100 NORTH ELEVATION

Demolition Elevations

New Elevations

Schedule



- Phased Construction:
- Initial site work: Aug. 2025
 - Building 200: Oct. 2025
 - Building 400: Feb. 2026
 - Building 500: Dec. 2026
 - Building 600: April 2027



Important Dates

- **IF SITE VISIT IS NEEDED, PLEASE SCHEDULE AN APPOINTMENT:**
 - Travis Kirk: (209)777-4073/ travis_kirk@fuhsd.org
- **QUESTIONS ARE DUE BY 5:00 P.M. ON OCTOBER 21, 2024:**
 - faith_severson@fuhsd.org

ALL RESPONSES ARE DUE BY 2:00 P.M. ON OCTOBER 29, 2024

Fremont Union High School District

589 West Fremont Avenue

Sunnyvale, CA 94087



Questions?

Quattrocchi Kwok Architects | (707) 576-0829 | nicks@qka.com

Name	Company / Title	Phone	Email
Shawna Palon	Landmark Constructors	916-663-1953	frontdesk@landmarkconst.net
Will Talamaivao	CWS Construction	415 599 6545	estimator@cwsconstructiongroup.com
Matt Gallagher	Vance Brown Builders	650.537.0067	mat.gallagher@vancebrown.com
Amber Emery	Blach Construction Company	408-869-8377	amber.emery@blach.com
Kevin Jarvis	Blach Construction Company	408-667-2885	kevin.jarvis@blach.com
Joe Ascolese	SC Builders, Inc.	408-318-4405	jascolese@scbuildersinc.com
Emmett Chase	KYA Services	415-926-0898	emmett.chase@thekeyagroup.com
Abdulah Rashidi	Rodan Builders Inc	9257263059	bids@rodanbuilders.com