



WELCOME!

Parent & Citizen Advisory Committee Meeting
October 17, 2024



Warm-Up

Take a moment to introduce yourself to those at your table.

Ice Breaker

- What is your connection to BSD?
- Why are you **Proud To Be BSD**?

**TO BE PROUD
BSD**

A large, stylized graphic in dark blue. The words 'TO BE' are written vertically on the left. 'PROUD' is written in a large, bold, sans-serif font across the top. 'BSD' is written in a very large, bold, sans-serif font below 'PROUD'. A small circular logo of the Brandywine School District is integrated into the letter 'O' of 'PROUD'.



Board Policy 7.02

Introductions

Roles and Responsibilities for PCAC Members

POLICY: 7.02

Parent and Citizen Advisory Committee (“PCAC”):

To **engage citizens** in the important task of **providing *BBE with community input** on issues impacting schools within BSD and to **facilitate dissemination** of information from BSD to the community

*Brandywine Board of Education





Discussion & Quick Share

Roles and Responsibilities for PCAC Members

How can you take this information and share it with your schools and/or community?

Please choose a spokesperson from your table to share one 'new' idea for the larger group





Critical Thinking

Think About it Thursday:

Take a moment and think about these questions and then share your thoughts with those at your table.

- What are some reasons that you think a student might not attend school routinely?
- Why do you think that it is important to attend school routinely?





Dr. Lawson





School Attendance

School Attendance: Impact on School Success

Parent & Citizens Advisory Committee

October 2024

Lisa A. Lawson, Ed.D.
Superintendent of Schools

Sarah Schmittinger Kashner
BSD MTSS Coordinator



Attendance Facts: Pre & Post Pandemic

- **2018**

- Chronic Absenteeism in Delaware = **13.5%**
- Chronic Absenteeism Nationally = **14.8%**
(Connecticut = 9.9%, Alabama = 25%)

- **2023**

- Chronic Absenteeism in Delaware = **20.8%**
- Chronic Absenteeism Nationally = **26%**

If students are not in school, they're not learning,"
-Secretary of Education Dr. Mark Holodick





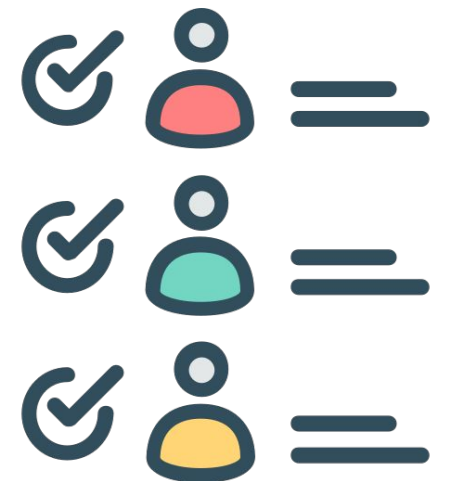
BSD's Attendance Story

2023-2024

Between October and May, **1,693 students were chronically absent.**

That represents **17% of students.**

Cumulatively, students missed 88,326 days between October & May.

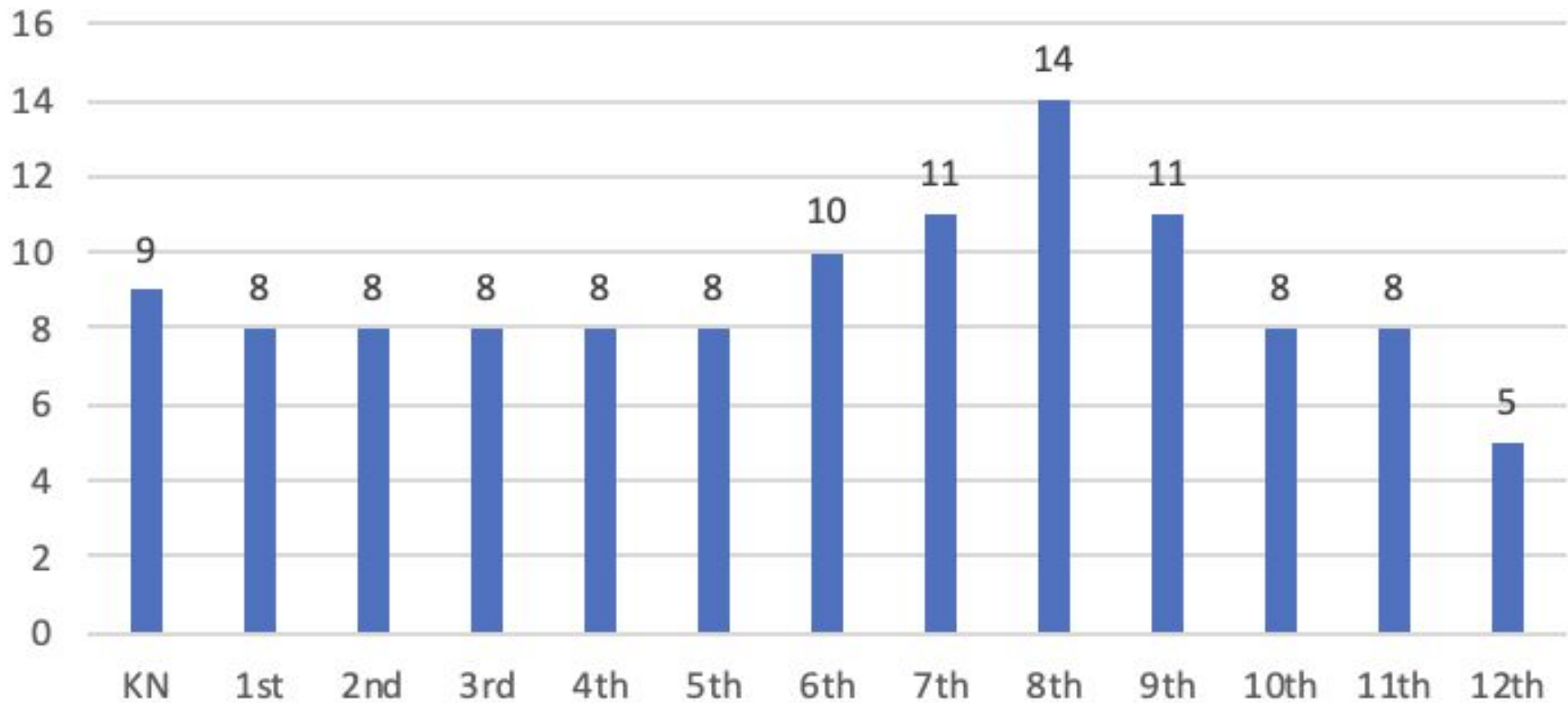


**All data is based on Full Academic Year (FAY) students enrolled for at least 85% of the year.*



BSD Data

Average Days Absent by grade Oct 2023 - May 2024

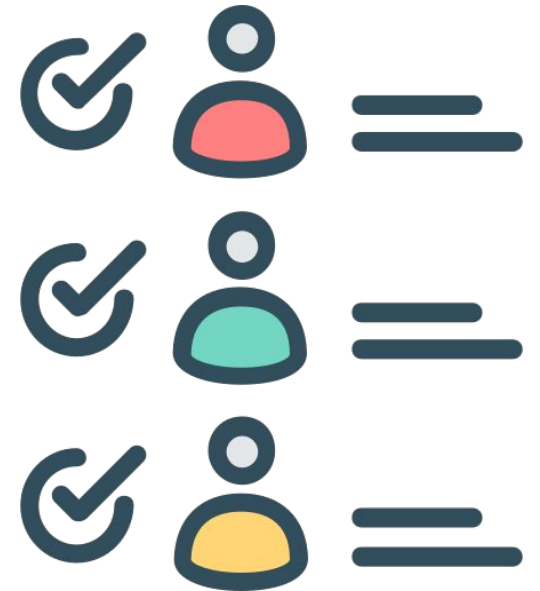




New School Attendance Initiative

Delaware State Code Title 14 Chapter 27 School Attendance & Truancy

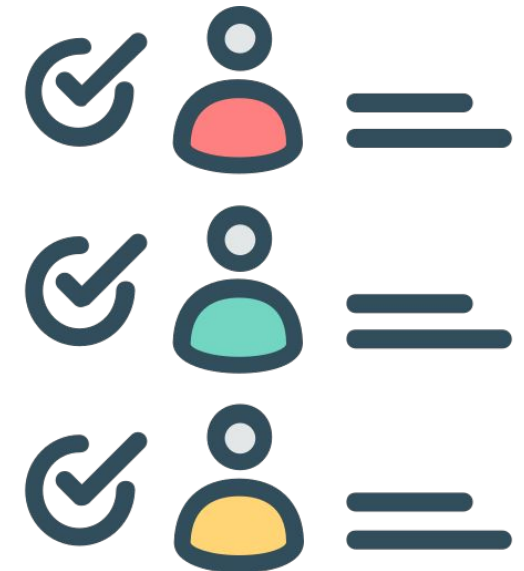
- ★ *Excused vs. Unexcused*
- ★ *Truancy Defined*
- ★ *Chronic Absenteeism*





Root Causes of Chronic Absenteeism / Truancy

- Family factors
 - Housing instability (McKinney-Vento)
 - Food insecurities
 - Lack of family structure
 - Domestic Violence
- Poverty
- Transportation difficulties
- Illness / Mental Health / Trauma
- Student Engagement issues
 - Bullying
 - Relationships among peers
- Substance Misuse
- Grief or Loss
- Harsh school discipline policies
- Lack of parental involvement with school





Research Recommended Best Practices & BSD's Status

- Review State Policies
- Early Intervention
- Raise Awareness / Professional Learning
- Develop or Enact Communication Systems
- Incorporate Multi-Tiered Systems of Support
 - Student Attendance Intervention Plans (SAIP)
 - Referral to Problem-Solving Team (~8 days)
 - Prioritize School Climate & Culture





MTSS

Tier 3: Intensive Intervention

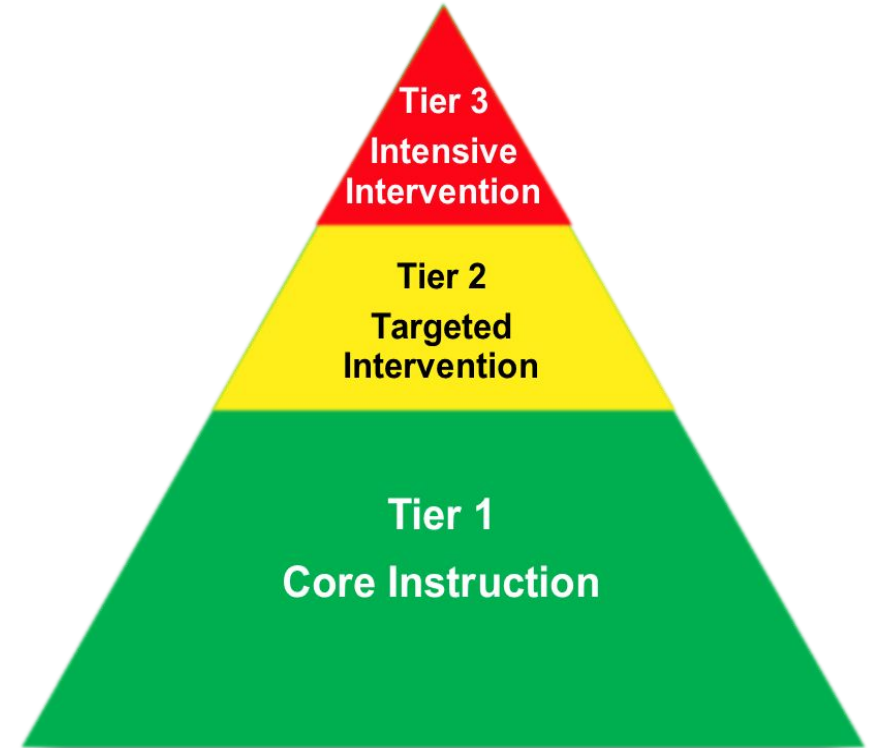
- Intensive case management with coordination of public agency
- Legal response, as needed

Tier 2: Early Intervention

- Provide personalized early outreach
- Meet to develop a tailored action plan (Student Action Intervention Plan, SAIP)
- Connect to a caring mentor

Tier 1: Universal Prevention

- Recognize good/improved attendance
- Educate/enhance students & families
- Monitor attendance data & set goals
- Establish positive & engaging school climate
- Identify & address common barriers to getting to school.



MTSS: Foundational Supports Which Promote Positive Conditions For Learning



Court-Ordered Interventions to Address Truancy

Data, Data, Data!

Wraparound Services	45.45%
Referral to School Social Worker	54.55%
School Counseling	63.64%
Behavioral Health Program	45.45%
Referral to Health & Social Services	54.55%
Other	45.45%

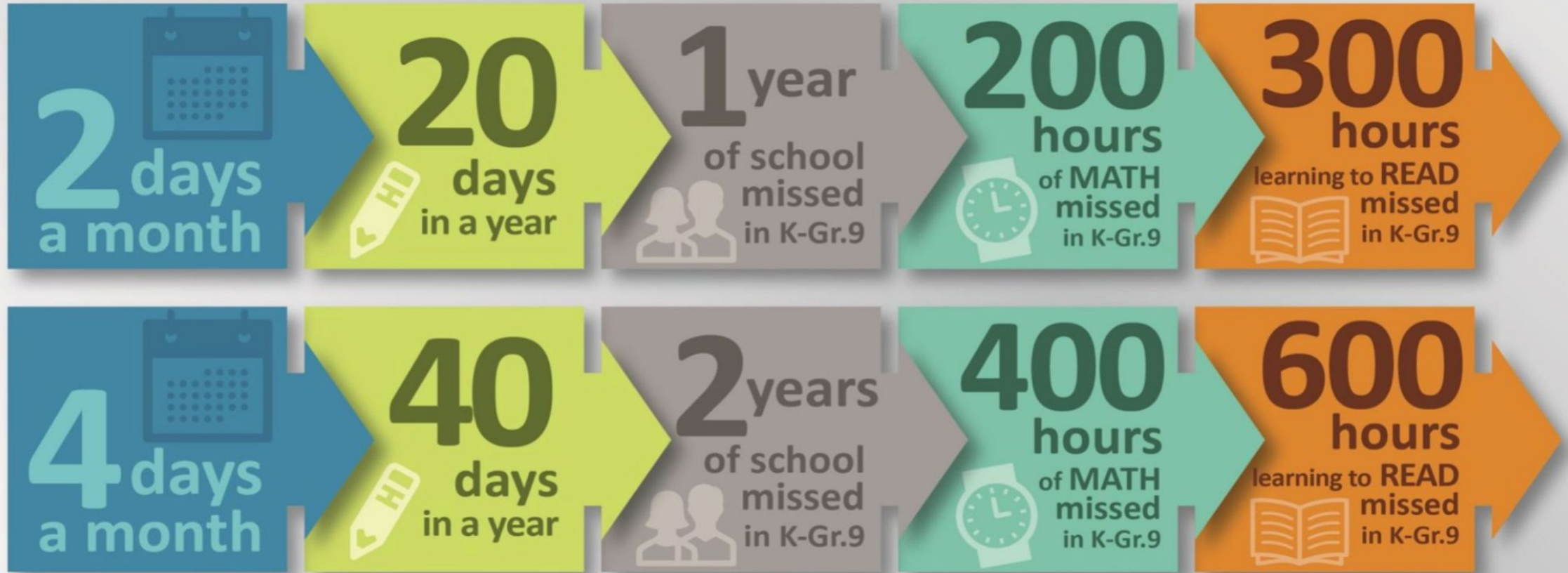




Student Absences

When children regularly miss school, they miss out on fundamental reading and math skills and the chance to build good attendance habits for the future.

Student absences





Daily Lateness



PUNCTUAL

- Arrive to school on time
- Arrive to lessons on time
- Aim for 100% attendance

Daily lateness equates to...

3

**5 MINUTES LATE =
15 HOURS OF LEARNING LOST
3 DAYS OF LEARNING LOST**

6

**10 MINUTES LATE =
30 HOURS OF LEARNING LOST
6 DAYS OF LEARNING LOST**

10

**15 MINUTES LATE =
50 HOURS OF LEARNING LOST
10 DAYS OF LEARNING LOST**



BSD Attendance Campaign

4 OR LESS
EQUALS
SUCCESS

- Parent Letters
- Postcard
- Attendance Graphic
- Flags on school sites
- Social Media Posts



Questions

Q & A with Dr. Lawson





Table Teams

- School Leaders share school-specific data
- Take a moment to exchange ideas of ways that your school community can support families so that all children regularly attend school.
- Next, be prepared to share to the room what you brainstormed as a group.





Next Steps

Take a Moment...

- Write the next steps that you are committed to take to share this information back to your school and wider community.





Next Steps

Here is how PCAC members can help

- Attend a PTA/PTO Meeting and present this Information
- Support School Attendance district initiatives on social media by addressing misunderstandings
- Work with your school's PTA/PTO and Admin team to make a plan to provide items that a child or family may need to increase attendance.
- Hang positive school posters in places of business
- The ideas are endless....





Upcoming

Next Meeting Topic: Academic Success

Meeting Date	Time	Location
Thursday, October 17, 2024	5:30 – 7:45 pm	MPE – Multi-Purpose Rm
Thursday, December 12, 2024	5:30 – 7:45 pm	MPE – Multi-Purpose Rm
Thursday, February 6, 2025	5:30 – 7:45 pm	MPE – Multi-Purpose Rm
Thursday, March 20, 2025	5:30 – 7:45 pm	MPE – Multi-Purpose Rm





Survey

Did you find the topic on attendance helpful?

Yes No Somewhat

Did the presentation provide you with any new information?

Yes No Somewhat

Did you find the tabletop discussions helpful?

Yes No Somewhat

As a member of PCAC, how do you plan to share information with families, students, the community or others from today's meeting?

Let us know if you have any comments or questions.





Members of PCAC Subcommittee

Kim Stock, PCAC Chairperson

kim.stock@bsd.k12.de.us

Lavina Jones-Davis, PCAC Co-Chairperson

lavina.jones-davis@bsd.k12.de.us

Katie Ciecko, Subcommittee Member

katie.ciecko@bsd.k12.de.us

Ari Rosario-Carpenter, Subcommittee Member

ari.rosariocarpenter@gmail.com

Laura Yaghoobian, Subcommittee Member

laura.yaghoobian@gmail.com



PROUD
TO BE
BSD