

# PROPOSITION 1: K-12 Expanded Student Capacity, School Improvements & Safety Upgrades

## Future Ready for ALL Students

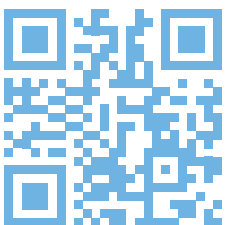
### FACTS & INFORMATION

#### SEE INSIDE

- Relieving Student Overcrowding
- Needed Basic Improvements
- Support Teaching & Learning
- School-Specific Upgrades
- Frequently Asked Questions



**SCHOOL ELECTION NOV. 5**  
**PROP. 1 LOCATED ON THE BACK OF YOUR BALLOT**



[Scan to learn more!](#)

Election ballots must be postmarked or dropped off at a drop box by 8 pm Nov. 5. Register to vote and find a ballot drop box at [piercecountywa.gov/vote](http://piercecountywa.gov/vote).



Sumner-Bonney Lake School District  
1202 Wood Ave  
Sumner, WA 98390  
[www.sumnersd.org](http://www.sumnersd.org)

ECRWSS  
Postal Customer

# FUTURE READY for ALL Students

## PROPOSITION 1 K-12 Expanded Student Capacity, School Improvements & Safety Upgrades

# FUTURE READY



Building for achievement where **every** child in Sumner-Bonney Lake succeeds.



### EXPAND & IMPROVE SCHOOLS FOR TEACHING & LEARNING

Relieve Student Overcrowding,  
Preserve Quality Schools



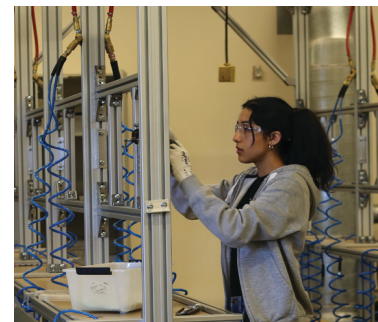
### TAKE CARE OF BASIC NEEDED IMPROVEMENTS

Cost Savings in the Long-run



### PREP FOR POST-GRADUATION SUCCESS OPPORTUNITIES

Expanded Career & Technical Education  
Classroom Space Opportunities



### NEW MULTI-USE TURF FIELDS & ATHLETIC FACILITIES

Year-round Playability for Students & Community



### IMPROVE SCHOOL SAFETY, HEALTH & SECURITY

Controlled School & Classroom Access Districtwide

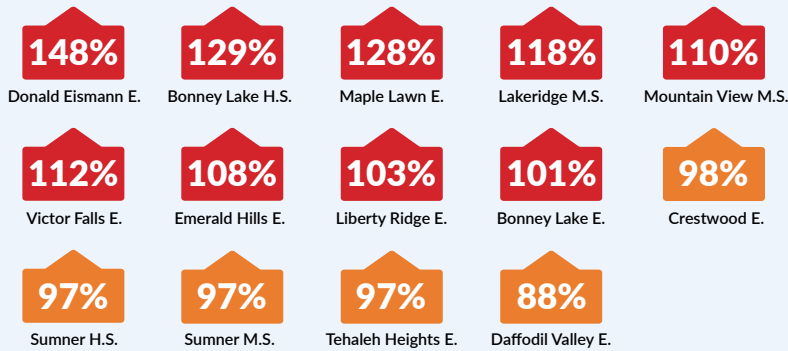


# PROPOSITION 1: Why Now?

## RELIEVING STUDENT OVERCROWDING

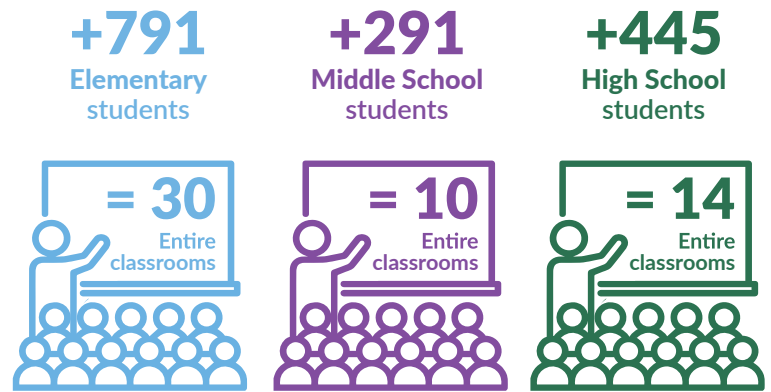
Relieve Student Overcrowding, Preserve Quality Schools

### SCHOOLS OVER CAPACITY



9 of 14 schools already **OVER** 100% capacity. 4 other schools are over 97% capacity.

### STUDENTS OVER CAPACITY

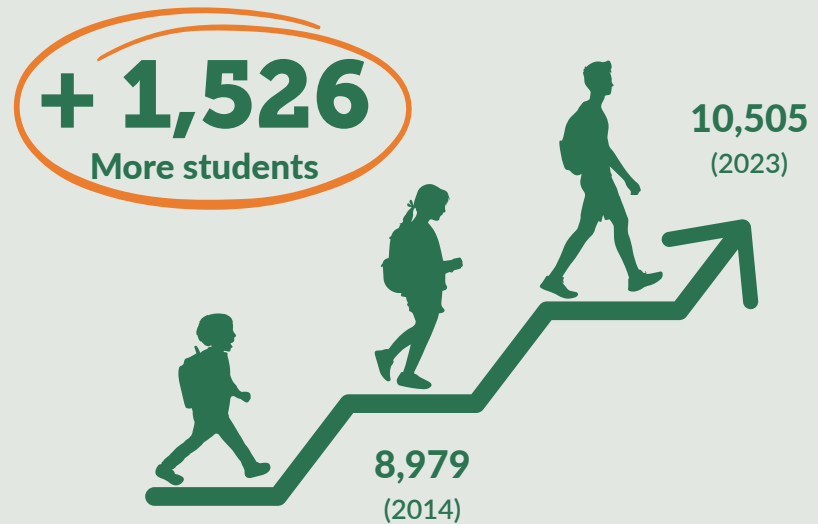


### ANOTHER ENTIRE GRADUATING CLASS

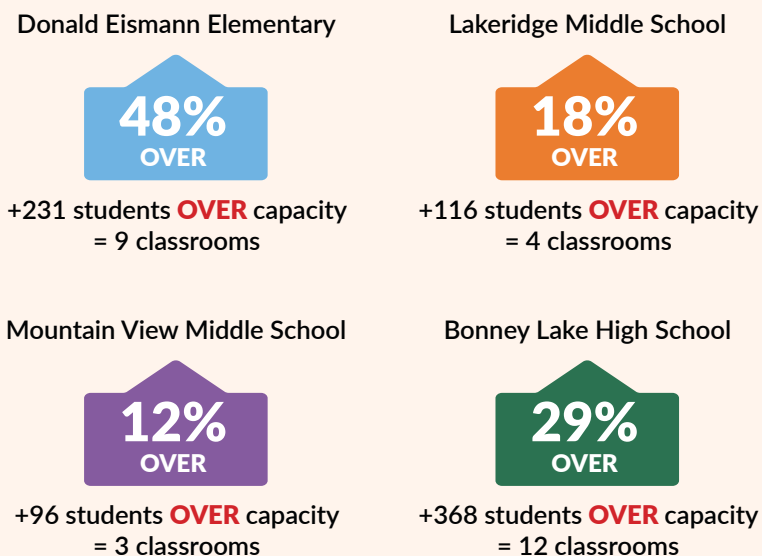


BLHS is 368 students **OVER** capacity - that's the equivalent of another **ENTIRE** graduating class!

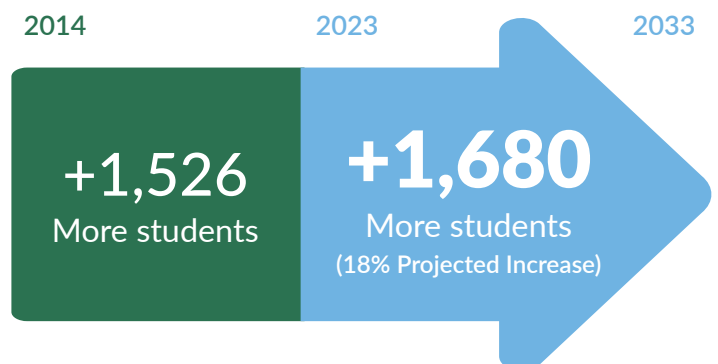
### MORE STUDENTS



### NOW



### MORE STILL COMING



# KEY QUESTIONS & ANSWERS



## QUALITY SCHOOLS FOR EVERY CHILD

### Which schools will be impacted if Prop. 1 is approved?

All elementary, middle and high schools will be impacted. Added classrooms and facilities will relieve student overcrowding across all schools. There will be major improvements and expansion at both Sumner and Bonney Lake high schools, a new middle school in Tehaleh, and upgrades at 5 elementary schools (see map and details inside).



## EXPANDED CAREER & TECHNICAL EDUCATION

### How would Prop. 1 help prepare students for post-graduation success?

Prop. 1 would add classrooms and expanded opportunities at ALL middle and high schools in Career & Technical Education (CTE) that prepares students with practical skills and success after graduation. Middle and high schools are currently overcapacity and student enrollment is projected to increase by an additional 1,680 students over the next decade.

## TAKING CARE OF THE BASICS

### What kind of basic improvements and needed upgrades are included across the schools?

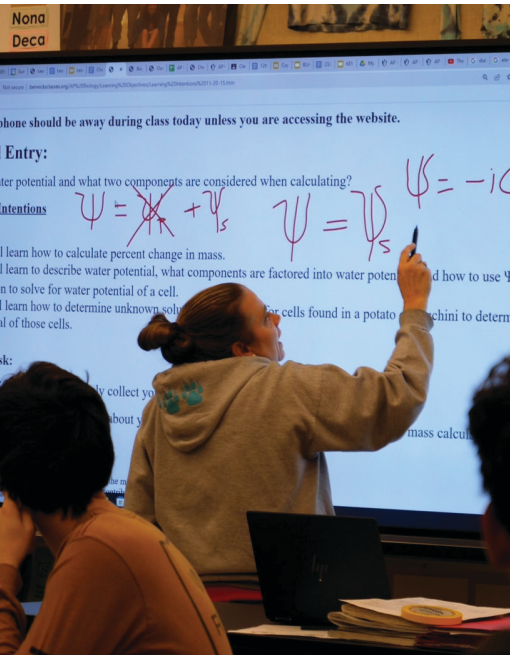
Prop. 1 would include basics like replacing aged and deteriorating roofs and weather-damaged exteriors to prevent water/weather damage - upgrades that save more costly repairs in the future. Prop. 1 will also make plumbing and mechanical improvements to maintain clean air and safe water and energy-efficient lighting conversion, saving \$167,899 annually with 90% less energy use.



## HEALTH, SAFETY & SECURITY

### What's included in Prop. 1 to help ensure health, safety and security for students, staff and visitors?

Prop. 1 includes Basic Life Safety improvements including completing controlled school entry, security cameras, and classroom lockdown capacity across all schools. In addition, new construction includes up-to-date 911 communications, fire alarm, sprinkler, and intercom systems as well as seismic upgrades for earthquake safety. Prop. 1 also includes ADA upgrades for improved accessibility for students, staff and visitors.



## IMPROVED ENVIRONMENTS FOR TEACHING & LEARNING

### What improvements will impact teaching and learning in the classroom?

Added classroom space will help "right-size" classrooms. Relieving student overcrowding will directly impact more individualized teaching and learning. Proposition 1 also includes up-to-date technology upgrades and expanded CTE opportunities at new and renovated schools.



## SCHOOL PROJECT PRIORITIES & TIMELINE

### What are the priorities and approximate timelines for school projects in Prop. 1?

Relieving student overcrowding is a top priority. For that reason, expansions and new construction at both high schools and the middle school are also top priorities. These projects will relieve overcrowding at all middle and high schools. Design and work on construction documents will begin immediately if Prop. 1 is approved. Construction timelines will also be developed.



**EXPAND & IMPROVE SCHOOLS FOR TEACHING & LEARNING**

**Relieve Student Overcrowding, Preserve Quality Schools**

- Relieve student and classroom overcrowding at nearly all schools.
- Expansion/Replacement of Sumner HS and Bonney Lake HS, add a new middle school in Tehaleh, and improve 5 elementary schools to support student achievement and update learning technology.
- Up-to-date “right-sized” K-12 classrooms added to meet major growth in student enrollment.



**TAKE CARE OF BASIC NEEDED IMPROVEMENTS**

**Cost Savings in the Long-run**

- Take care of basics that extend school building life and save money in the long-run.
- Needed repairs and improvements to aged and deteriorating roofs. Interior and exterior improvements to prevent further water/weather damage, extend building life and save on more costly future repairs.
- \$167,899 annual cost savings through energy-efficient lighting conversion with 90% less energy use.



**PREP FOR POST-GRADUATION SUCCESS**

**Expanded Career & Technical Education**

- Expanded opportunities for growing enrollment, developing practical skills and preparation for post-graduation success.
- Additional space for Career & Technical Education opportunities at all middle and high schools.
- CTE Programs including: STEM, Trades & Manufacturing, Tourism/Hospitality, IT/Computer Science, Health/Nutrition, Business/Marketing, Graphic Design, Digital/Video.



**NEW MULTI-USE TURF FIELDS & ATHLETIC FACILITIES**

**Year-round Playability for Students & Community**

- 8 New multi-use turf fields at 5 schools serving 23 boys and girls sports teams as well as year-round community field use. Reduced field maintenance costs.
- Multi-use fields & lighting: football, soccer, baseball, fastpitch, lacrosse. Upgrades and replacement of aging athletic facilities including pool built in 1969.
- 2,500+ community field rentals for after school, weekends and summer sports and recreation.



**PRESERVE SCHOOL SAFETY, HEALTH & SECURITY**

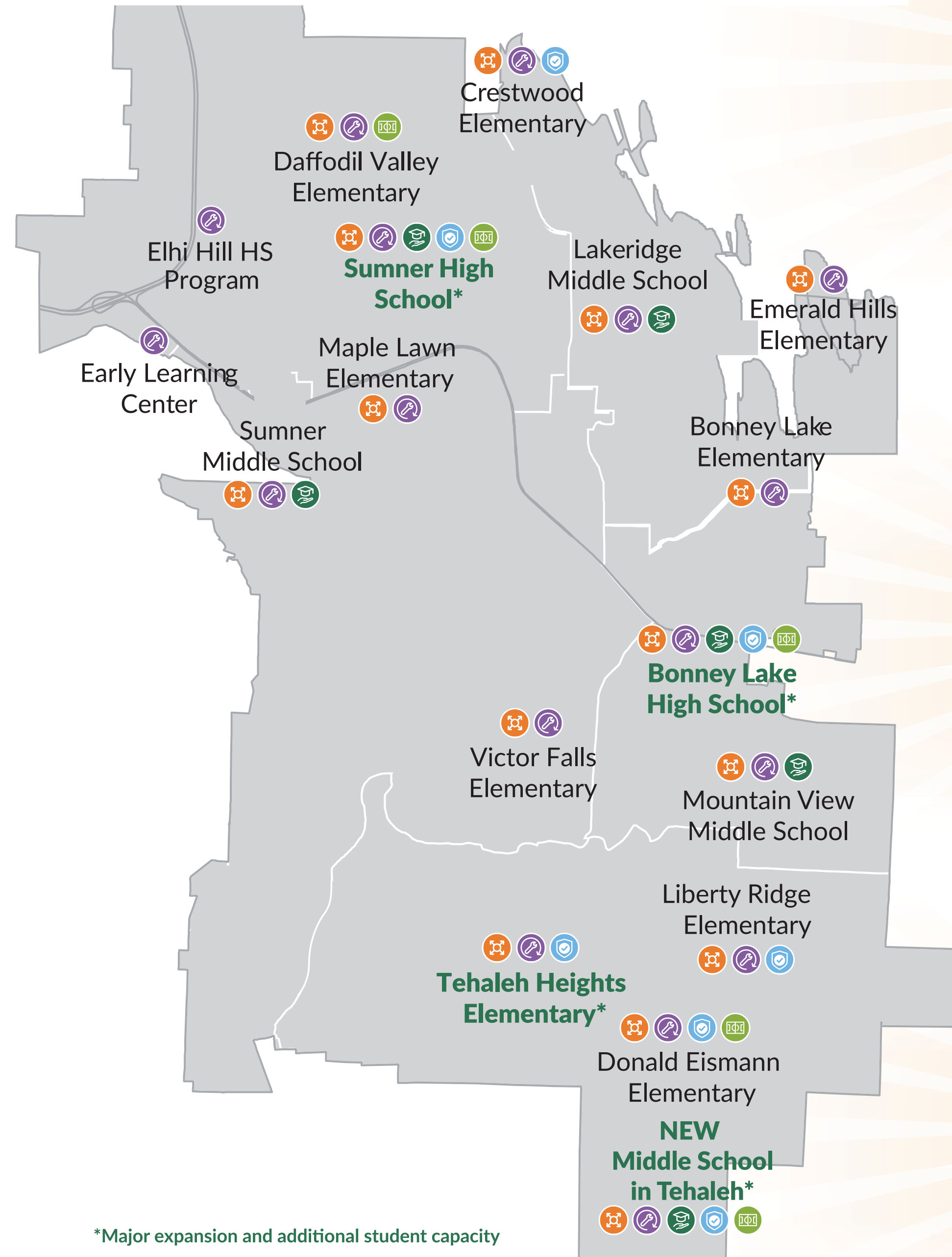
**Controlled School Entry & Access**

- Plumbing, heating and ventilation systems to maintain clean air and safe water.
- Basic Life Safety, 911 emergency communications, fire alarm and sprinkler systems. Controlled school entry and classroom access, lockdown capacity, security cameras. Seismic upgrades for earthquake safety.
- ADA upgrades for improved access for students, staff and visitors with disabilities. Additional parking and neighborhood traffic safety improvements.

**FUTURE READY: COMMUNITY-INFORMED PLAN**

**Relieve Student Overcrowding and/or Improvements at all Schools**

For more than a year, a 31-member community advisory committee (Capital Facility Advisory Committee) - made up of parents, educators, and community members with expertise in planning, building, design, construction and finance - studied increasing enrollment, basic improvements needed at deteriorating schools, and how to maintain health, safety and security at all schools. Prop. 1 is based on their **Future Ready** plan to relieve K-12 overcrowding and make needed basic improvements that save costs in the long-run.



\*Major expansion and additional student capacity

**COST & BENEFITS**

Quality K-12 schools benefit the entire community, helping **prepare every child for success**, regardless of background. Taking care of basic improvements now will **prevent more costly repairs in the future**, extend building life and save money in the long-run. The cost of Prop. 1 would be \$732 million. Delaying expansion and improvements by 5 years would increase the projected cost to \$850-\$935 million.

If approved by the voters, the bond measure would **maintain the same average tax rate** residential property owners have paid over the last 5 years - \$4.63/\$1,000 of assessed property value. Residential property owners would pay \$70 more in 2025 per \$100K\* of assessed property value. If approved, Sumner-Bonney Lake School District would be eligible for up to **\$55 million in state matching funds** that would save local taxpayers future improvement costs.

\*The average residential property in the district is projected to be \$574K in 2025.



Sumner-Bonney Lake Schools have experienced a 21% increase across elementary schools and a 15% increase across middle and high schools over the last decade. Prop. 1 will add a new middle school and significantly expand both high schools to be **FUTURE READY** for another 1,680 more students (18% increase) projected over the next decade.

**Sumner High School**

- Replacement & major expansion with added classrooms to relieve student overcrowding
- Expanded Career & Technical Education opportunities
- New performing arts and athletic facilities, pool, multi-use turf fields with lights
- ADA upgrades for improved access, seismic upgrades for earthquake safety
- Safety, security, controlled access, expanded parking for students and events

**Bonney Lake High School**

- Major expansion with added classrooms to relieve student overcrowding
- Expanded Career & Technical Education opportunities
- Arts and athletic facilities, multi-use turf fields with lights for baseball, fastpitch and soccer year-round use
- ADA upgrades for improved access, seismic upgrades for earthquake safety
- Safety, security, controlled access, expanded parking and traffic safety improvements

**New Middle School in Tehaleh**

- New school to relieve overcrowding at all middle schools
- Expanded Career & Technical Education opportunities
- Athletic, gym, arts & music facilities, multi-use turf fields with lights for year-round use
- Built to ADA standards for improved access
- Safety, security, and controlled access; Seismic upgrades for earthquake safety

**Crestwood Elementary**

- Updated front entry & office welcoming students & parents with security upgrades
- Exterior & interior improvements to prevent further deterioration, extend building life
- Improved parking, school crossings and neighborhood traffic safety

**Daffodil Valley Elementary**

- New multi-use turf field for year-round playability, reduced maintenance costs - soccer, baseball and fastpitch
- Added field lighting to preserve play safety and security

**Donald Eismann Elementary**

- New multi-use turf field for year-round playability, reduced maintenance costs - soccer, baseball and fastpitch
- Added field lighting to preserve play safety and security
- Expanded parking, school crossings and neighborhood traffic safety

**Liberty Ridge Elementary**

- Updated front entry & office welcoming students & parents with security upgrades
- Exterior & interior improvements to prevent further deterioration and extend building life
- Improved parking, school crossings and neighborhood traffic safety

**Tehaleh Heights Elementary**

- Additional classrooms to relieve overcrowding across elementary schools
- Additional improved parking, school crossings and neighborhood traffic safety
- Safety, security, controlled access; Seismic upgrades for earthquake safety

**REMEMBER TO VOTE BY NOV. 5**

**Prop. 1 Located on the Back of your Ballot.**

# OFFICIAL BALLOT TITLE

## Sumner-Bonney Lake School District No. 320

### Special Election - Proposition No. 1

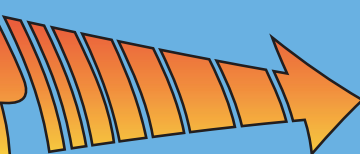
Bonds for K-12 Expanded Student Capacity,  
School Improvements and Safety Upgrades

The Board of Directors of Sumner-Bonney Lake School District No. 320 adopted Resolution No. 23/23-24, concerning expanded K-12 capacity and school improvements to relieve student overcrowding. If approved, Proposition No. 1 would authorize the District to: expand/improve two High Schools; add Middle School in Tehaleh; improve five Elementary Schools; update learning technology; expand career/technical education; replace aging roofs; improve ADA accessibility; improve mechanical for clean air/water; add turf fields for students/community; improve health/safety/security; issue \$732,000,000 of general obligation bonds maturing within 21 years; and levy annual excess property taxes to repay the bonds, all as provided in Resolution No. 23/23-24. Should this proposition be:

Approved

Rejected



**READY**   
**FOR THE FUTURE**



**SEE VIDEO**

Scan here for latest on Prop. 1.