

## Elementary Enrollment/Attendance Areas Committee October 14, 2024

### Welcome/Introductions/Norms

- Committee Introductions
- Committee Norms

### Committee Purpose

- Address Decline in District-Wide Enrollment
- Maximize Use of District Resources
- Develop Recommendations/Options to Provide to School Board for Elementary Enrollment Areas

### Goals

- *Optimizing Capacity*- balance populations make best use of available space
- *Equitable Access*- fair access to educational programs and facilities
- Minimize Disruptions- for learners and families
- *Maintain Efficiency*- travel time and middle school feeders
- *Future Needs and Considerations*- planning for future changes and needs

### Elementary Information and Enrollment Areas

- District 25 Elementary School Information/Enrollment Areas
- Elementary Feeder Schools (Middle School)

### Data Review

- Current Membership/Enrollment- October
- 7 Year Enrollment Comparison (K-12)
- 7 Year Kindergarten Enrollment
- 7 Year Transfer Comparison
- Elementary School Capacity 2024-2025
- PCSD 25 Enrollment Cohort Data

### Discussion/Questions/Resources

- ArcGIS- Geographic Information System
  - Tools for mapping, analyzing, managing and sharing spatial data

### Timeline and Next Steps

- Communications Plan Timeline

## Elementary Enrollment/Attendance Committee Norms

Encourage Full Participation

Team Members Present and Engaged

Effective Communication (Open Dialogue/Active Listening)

Collaboration and Problem Solving Approach

Maintain Focus on Purpose

Confidential Information

Respect Ideas and Opinions

Group Consensus

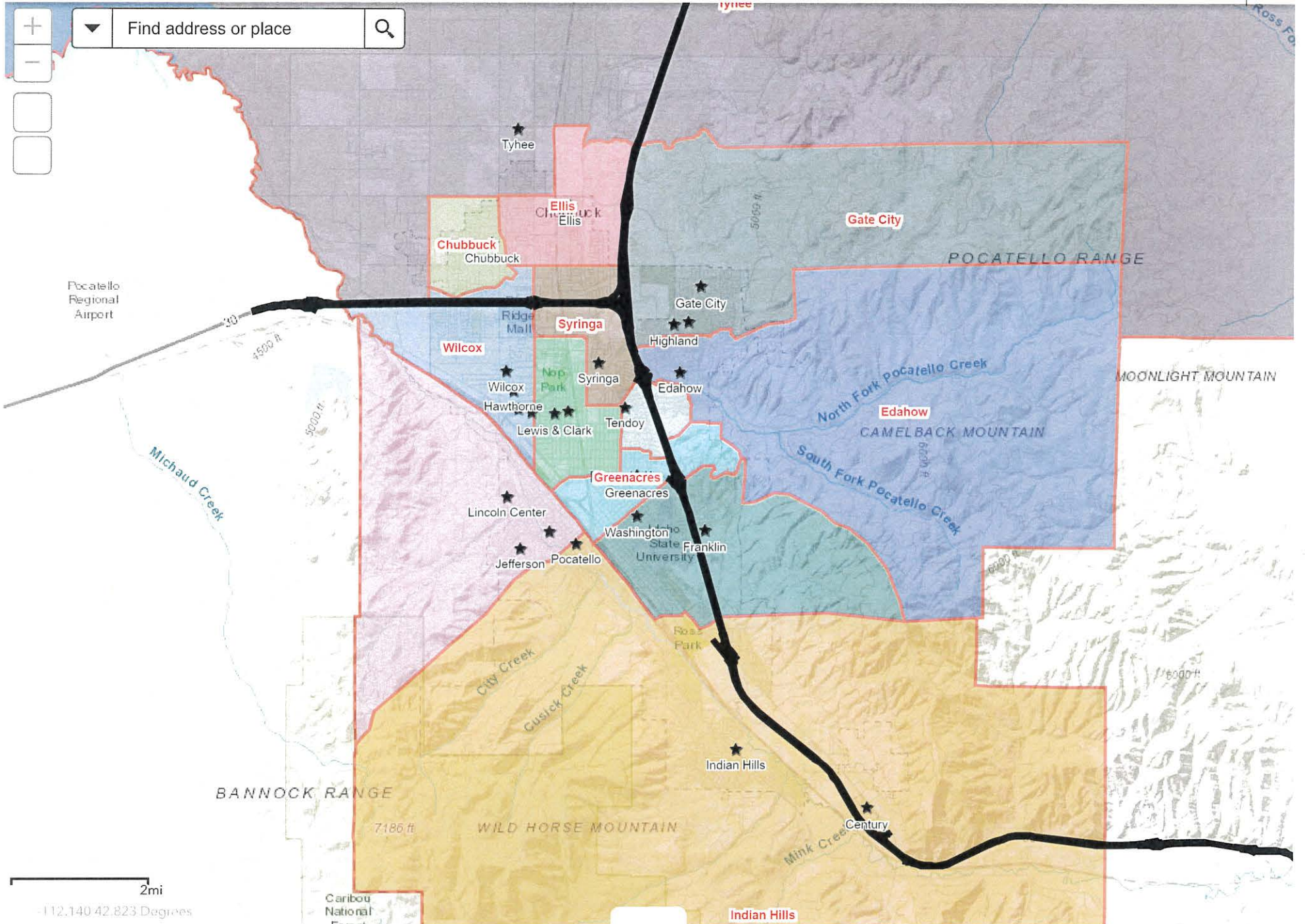
Operate Efficiently/Follow Outlined Agenda/Adhere to Time Requirements





# 24/25 Elementary Boundaries and Bus stops.

Moving into or living within a school boundary does not ensure placement at a spe

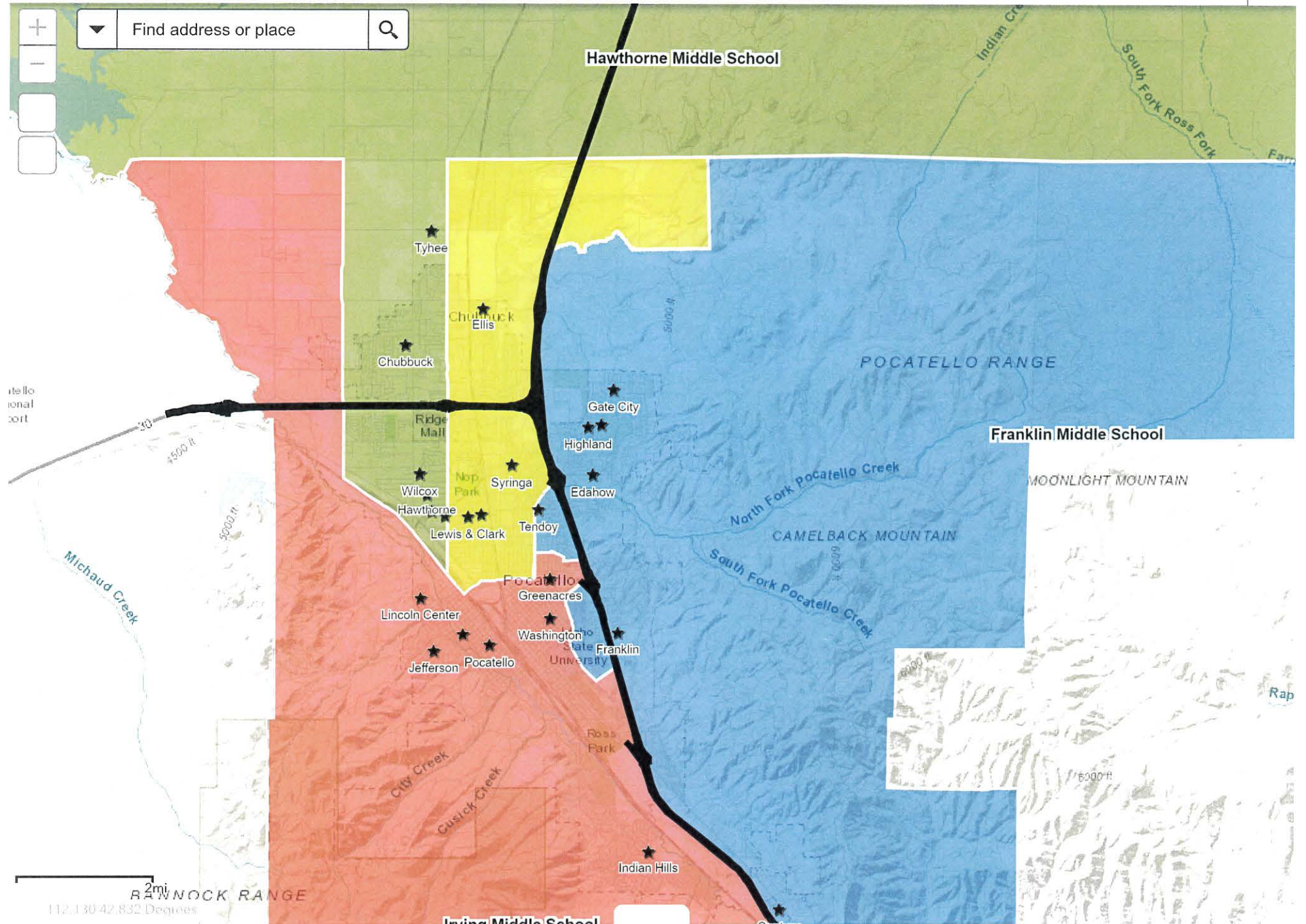






# 24/25 Middle School Boundaries and Bus Stops.

Moving into or living within a school boundary does not ensure placement at



## Elementary to Middle School Feeders

### Alameda Middle School

Ellis

Lewis and Clark

Syringa

### Franklin Middle School

Edahow

Gate City

Greenacres

Tendoy

Washington

### Hawthorne Middle School

Chubbuck

Tyhee

Wilcox

### Irving Middle School

Indian Hills

Jefferson

Greenacres

Tyhee

Washington

Wilcox

SCHOOL DISTRICT NO. 25 - MEMBERSHIP

1-Oct-24

SCHOOL	KINDERGARTEN				GRADE 1				GRADE 2				GRADE 3				GRADE 4				GRADE 5				TOTAL				
CHUBBUCK	24	24	6		17	20	21	4	25	24	24	4	5	25	23	23	5	24	24	24	5	22	23	24	1	421			
EDAHOW	19	20			21	20			21	21				24	25			28	28			23	22			272			
ELLIS	16	15	17		19	19	18		22	21	18			23	23	23		21	21	21		28	29			354			
GATE CITY	23	22	25		17	20	20		21	22	22			22	22	23		26	28	27		30	27	29		426			
GREENACRES	21	19	6		20	22	4		20	19	3			20	20	2		16	19	14	6	26	26	4		287			
INDIAN HILLS	25	24	24	5	19	18	18	5	26	24	25	4	23	20	20	23	7	22	24	22	24	5	19	23	23	23	3	498	
JEFFERSON	20	20	19		17	18	18		22	22	21			26	26			23	23	23		19	21	20		358			
LEWIS & CLARK	19	18	19	8	22	22	21		22	22	22			23	22	24		22	22	23		25	24	23		403			
SYRINGA	23	24			22	20			26	26				19	18	18		26	28			23	25	24		322			
TENDOY	16	17			16	16			18	16				17	19			22	21			21	22			221			
TURNING POINT													3					2				1				6			
TYHEE	19	21	20	12	18	20	19	12	27	27	27	13	26	26	25	13	25	25	26	14	27	28	28	12	510				
WASHINGTON	20	21			21	21			23	22				21	22			26	23			19	18			257			
WILCOX	20	19	19	16	10	17	18	17	16	6	22	22	21	3	22	23	21	2	20	21	20	22	6	21	19	21	19	4	467
<b>TOTAL</b>	<b>735</b>				<b>699</b>				<b>795</b>				<b>812</b>				<b>892</b>				<b>869</b>	<b>4802</b>							

**PCSD 25 ENROLLMENT COMPARISON - 7-YEAR**

<b>School</b>	<b>24-25 Enrollment</b>	<b>23-24 Enrollment</b>	<b>22-23 Enrollment</b>	<b>21-22 Enrollment</b>	<b>20-21 Enrollment</b>	<b>19-20 Enrollment</b>	<b>18-19 Enrollment</b>	<b>7 Year Difference</b>
Chubbuck Elementary	416	439	495	500	472	497	544	-128
Edahow Elementary	270	315	307	309	280	311	311	-41
Ellis Elementary	362	377	387	387	387	387	408	-46
Gate City Elementary	434	436	480	482	455	469	472	-38
Greenacres Elementary	291	300	320	286	278	317	311	-20
Indian Hills Elementary	499	490	544	524	493	567	568	-69
Jefferson Elementary	354	341	343	343	332	385	403	-49
Lewis & Clark Elementary	396	426	440	448	444	499	510	-114
Syringa Elementary	324	316	360	388	409	391	433	-109
Tendoy Elementary	219	225	235	217	225	237	263	-44
Tyhee Elementary	509	552	559	535	505	591	565	-56
Washington Elementary	259	243	228	225	221	224	205	54
Wilcox Elementary	470	499	531	532	490	538	549	-79
Turning Point	6	8	7	6	17	12	9	-3
Alameda Middle School	590	613	660	629	636	671	714	-124
Franklin Middle School	729	755	753	736	727	786	788	-59
Hawthorne Middle School	625	633	678	712	718	730	786	-161
Irving Middle School	723	728	720	708	694	671	656	67
Kinport	2	5	6	13	14	11	8	-6
Century High School	1072	1109	1113	1147	1236	1256	1247	-175
Highland High School	1492	1552	1590	1525	1595	1589	1604	-112
Pocatello High School	1316	1357	1369	1281	1194	1114	1037	279
New Horizon High School	130	136	133	127	122	166	139	-9
<b>Elementary Total</b>	<b>4809</b>	<b>4967</b>	<b>5236</b>	<b>5182</b>	<b>5008</b>	<b>5425</b>	<b>5551</b>	<b>-742</b>
<b>Middle School Total</b>	<b>2669</b>	<b>2734</b>	<b>2817</b>	<b>2798</b>	<b>2789</b>	<b>2869</b>	<b>2952</b>	<b>-283</b>
<b>High School Total</b>	<b>4010</b>	<b>4154</b>	<b>4205</b>	<b>4080</b>	<b>4147</b>	<b>4125</b>	<b>4027</b>	<b>-17</b>
<b>District Total</b>	<b>11488</b>	<b>11855</b>	<b>12258</b>	<b>12060</b>	<b>11944</b>	<b>12419</b>	<b>12530</b>	<b>-1042</b>

**PCSD 25 KINDERGARTEN ENROLLMENT - 7-YEAR**

<b>School</b>	<b>24-25 Enrollment</b>	<b>23-24 Enrollment</b>	<b>22-23 Enrollment</b>	<b>21-22 Enrollment</b>	<b>20-21 Enrollment</b>	<b>19-20 Enrollment</b>	<b>18-19 Enrollment</b>
Chubbuck Elementary	53	69	78	74	69	72	87
Edahow Elementary	39	46	44	67	48	48	51
Ellis Elementary	50	65	60	71	61	57	51
Gate City Elementary	70	59	62	59	69	78	75
Greenacres Elementary	48	43	49	43	51	48	50
Indian Hills Elementary	79	56	89	70	69	90	94
Jefferson Elementary	58	54	64	59	44	75	66
Lewis & Clark Elementary	54	65	66	71	80	90	85
Syringa Elementary	47	45	47	69	55	71	65
Tendoy Elementary	32	33	38	32	43	46	48
Tyhee Elementary	73	78	97	88	88	105	89
Washington Elementary	43	32	34	50	45	50	38
Wilcox Elementary	88	87	87	80	82	80	99
Turning Point	0	0	0	0	0	0	0
<b>District K Total</b>	<b>734</b>	<b>732</b>	<b>815</b>	<b>833</b>	<b>804</b>	<b>910</b>	<b>898</b>



PCSD 25 TRANSFER COMPARISON - 7-YEAR

School	24-25			23-24			22-23			21-22			20-21			19-20			18-19		
	Transfers In Approved	Transfers Out	Denied	Transfers In Approved	Transfers Out	Denied	Transfers In Approved	Transfers Out	Denied	Transfers In Approved	Transfers Out	Denied	Transfers In Approved	Transfers Out	Denied	Transfers In Approved	Transfers Out	Denied	Transfers In Approved	Transfers Out	Denied
Chubbuck	52	17	10	50	24	10	60	20	5	53	15	20	58	15	2	28	19	20	30	15	10
Edahow	14	32	12	18	36	9	12	28	12	15	30	5	14	30	14	9	21	6	7	22	5
Ellis	73	14	12	79	12	1	55	22	10	61	16	14	48	20	4	51	17	1	26	12	9
Gate City	16	19	1	14	25	3	12	25	7	11	19	2	14	17	3	15	11	10	14	9	10
Greenacres	51	28	4	61	19	5	34	18	8	41	23	6	56	25	9	43	23	8	35	20	13
Indian Hills	11	31	7	18	48	1	14	39	0	18	23	4	19	31	0	16	21	0	17	31	3
Jefferson	16	27	3	17	34	1	13	21	0	11	28	2	13	26	1	25	31	0	22	18	4
Lewis & Clark	48	39	2	42	48	18	49	21	17	59	27	0	60	41	6	52	35	6	48	24	9
Syringa	14	48	4	19	56	6	17	45	0	14	47	3	20	37	1	22	49	1	11	37	8
Tendoy	40	32	0	40	36	0	23	23	1	22	35	3	23	27	4	39	26	0	42	19	3
Tyhee	25	52	4	22	41	4	17	42	1	13	29	4	16	39	3	22	34	1	9	24	11
Washington	29	19	3	37	27	2	20	28	3	13	25	0	19	29	4	18	30	8	24	22	5
Wilcox	31	52	2	28	37	5	30	32	2	19	38	17	33	36	3	29	33	5	24	36	17
Out of District	11	N/A	4	18	N/A	0	19	N/A	2	21	N/A	2	20	N/A	0	16	N/A	4	17	N/A	12
<b>District Totals</b>	<b>420</b>	<b>410</b>	<b>64</b>	<b>445</b>	<b>443</b>	<b>65</b>	<b>356</b>	<b>364</b>	<b>66</b>	<b>350</b>	<b>355</b>	<b>80</b>	<b>393</b>	<b>373</b>	<b>54</b>	<b>369</b>	<b>350</b>	<b>66</b>	<b>309</b>	<b>289</b>	<b>107</b>

## Elementary School Capacity/Membership 2024-2025

School	*Capacity	Current Enrollment	Capacity %
Chubbuck	488	416	85.25%
Edahow	332	270	81.33%
Ellis	368	362	98.37%
Gate City	498	434	87.15%
Greenacres	422	291	68.96%
Indian Hills	626	499	79.71%
Jefferson	470	354	75.32%
Lewis and Clark	510	396	77.65%
Syringa	390	324	83.08%
Tendoy	332	219	65.96%
Tyhee	581	509	87.61%
Washington	332	259	78.01%
Wilcox	648	470	72.53%
<b>Total</b>	<b>5997</b>	<b>4803</b>	<b>80.09%</b>

\*Based on school staffing and programs for the 2024-2025 school year

## PCSD 25 Enrollment Cohort Data

	2018	2019	2020	2021	2022	2023	2024
K		884	895	809	806	732	736
1st	905	882	818	843	851	794	696
2nd	940	878	827	880	885	815	795
3rd	935	932	805	874	901	882	819
4th	937	916	875	858	890	880	897
5th	981	923	871	909	895	859	878
6th	962	967	884	903	929	870	849
7th	971	952	940	908	933	949	877
8th	1028	949	936	976	946	917	935
9th	1029	1140	1052	1066	1114	1064	1049
10th	1047	996	1093	1047	1044	1087	1036
11th	972	1032	964	1088	1029	1002	1014
12th	1011	971	964	906	1044	973	910

**COMMUNICATIONS PLAN TIMELINE**  
**Enrollment and attendance zone initiative planning**  
September 2024-March 2025



**September: Preparation, Awareness & Data Gathering**

- Preliminary research on enrollment patterns and demographic trends.
- Internal briefings with district staff and administrators.
- Present preliminary findings to Board of Trustees: Work Session & Regular Board Meeting
- Establish elementary and secondary committees with zonal representation from admin, staff, parents and board members.

**October: Initial Communication & Engagement Planning.**

- Distribute districtwide email/Infinite Campus communication introducing the process and identify engagement opportunities.
- Create dedicated webpage; share to social media and send media release to local news.
- Committee workshops.
- Update Board to refine plan, as needed: Work Session and Regular Board Meeting.

**November: Community Engagement & Draft Proposal Development**

- Continue committee workshops.
- Provide opportunities for community input: focus groups, public forums, feedback surveys.
- Draft preliminary enrollment and attendance zone proposal.
- Present findings and the draft proposal at the Regular Board Meeting.

**December: Analysis & Proposal Refinement**

- Continue committee workshops.
- Synthesize community input.
- Update Board to refine proposal, as needed: Work Session and Regular Board Meeting.

**January: Proposal Finalization & Ongoing Communication**

- Define further opportunities for community input on draft proposal, as needed.
- Meet with school principals, PTAs, and community groups for targeted feedback.
- Provide timely communication updates via email, website, and social media.
- Outline refinements for draft proposal: Work Session and Regular Board Meeting.

**February: Proposal for Action & Decision Communication**

- Review the final proposal for action with the Board of Trustees at the Regular Board Meeting.
- Announce the Board's decision through district-wide communication channels.
- Plan for implementation, including preparing communication strategies for affected families.

**March: Implementation**

- Continue planning and support for implementation.
- Gather final feedback on the process and reflect on lessons learned.