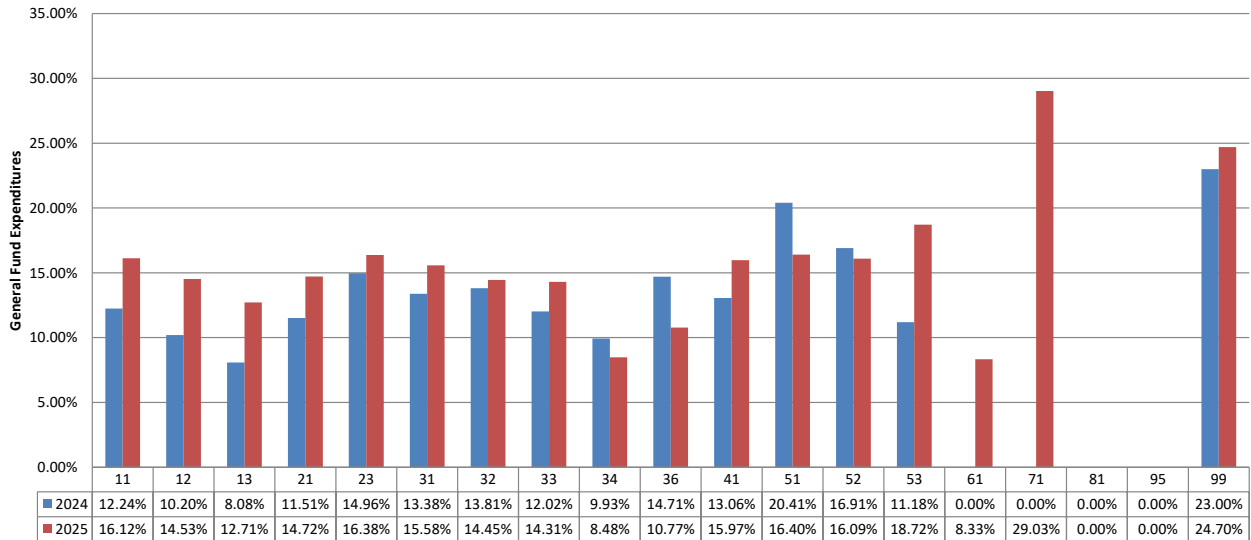


**TOMBALL INDEPENDENT SCHOOL DISTRICT  
FINANCIAL COMPARISON REPORT  
As of August 31, 2024  
General Fund, Food Service, and Debt Service Funds  
(AMOUNTS IN \$000)**

	Budget	Actual	% of Budget Realized / Expended
<b>General Fund Revenues</b>			
Property Taxes and P&I	\$ 113,396	\$ 813	0.7%
Co-Curricular Activity	336	76	22.6%
Investment Income	1,508	443	29.4%
Rents, Fees, Misc.	1,158	628	54.2%
State Rev.- Foundation Program	7,490	0	0.0%
State Revenue - TRS On-Behalf	0	0	0.0%
State Revenue - Other Programs	76,687	0	0.0%
Federal Revenue Programs	13,425	1,236	9.2%
<b>Total General Fund Revenues</b>	<b>\$ 214,000</b>	<b>\$ 3,196</b>	<b>1.5%</b>
<b>General Fund Expenditures by Function</b>			
11 Instruction	\$ 139,380	\$ 22,470	16.1%
12 Instr. Resource & Media Services	2,480	360	14.5%
13 Curriculum Dev./Instr. Staff Development	1,421	181	12.7%
21 Instructional Leadership	5,223	769	14.7%
23 School Leadership	12,162	1,992	16.4%
31 Guidance & Counseling Services	7,545	1,176	15.6%
32 Social Work Services	90	13	14.5%
33 Health Services	2,682	384	14.3%
34 Pupil Transportation	10,842	919	8.5%
36 Co-curr./Extracurr. Activities	5,215	562	10.8%
41 General Administration	7,608	1,215	16.0%
51 Plant Maintenance & Operations	22,282	3,655	16.4%
52 Security & Monitoring	3,057	492	16.1%
53 Data Processing Services	3,709	694	18.7%
61 Community Services	1	0	8.3%
71 Leases	426	22	5.1%
81 Fac. Acquisition & Construction	0	0	0.0%
95 Juvenile Justice Alt. Ed. Program	25	(19)	-75.6%
99 Other Intergovernmental	1,520	375	24.7%
<b>Total General Fund Expenditures</b>	<b>\$ 225,669</b>	<b>\$ 35,258</b>	<b>15.6%</b>

**Budget Targets:**

**This chart represents the percentage actually expended of the appropriations approved by the Board by Function.**



**TOMBALL INDEPENDENT SCHOOL DISTRICT**  
**FINANCIAL COMPARISON REPORT**  
 As of August 31, 2024  
 General Fund, Food Service, and Debt Service Funds  
 (AMOUNTS IN \$000)

	<u>Budget</u>	<u>Actual</u>	<u>% of Budget Realized / Expended</u>
<b><u>Food Service Fund Revenues</u></b>			
Food Sales	\$ 5,648	\$ 440	7.8%
State Revenue - TRS On-Behalf	275	19	7.0%
Federal/State Reimbursement	4,670	1	0.0%
Total Food Service Fund Revenues	<u>\$ 10,593</u>	<u>\$ 461</u>	4.4%
<b><u>Food Service Fund Expenditures</u></b>	<u>\$ 12,720</u>	<u>\$ 958</u>	7.5%
<b><u>Debt Service Fund Revenues</u></b>			
Property Taxes and P&I	\$ 54,990	\$ 441	0.8%
Investment Income	10	111	1106.8%
State Rev.-Foundation Allocation	6,000	0	0.0%
Sale of Bonds	0	0	0.0%
Total Debt Service Fund Revenues	<u>\$ 61,000</u>	<u>\$ 552</u>	0.9%
<b><u>Debt Service Fund Expenditures</u></b>	<u>\$ 61,000</u>	<u>\$ 36,501</u>	59.8%

**\*\*Review additional tabs (worksheets) for reconciliations of amendments to adopted revenue and expenditure appropriations.**



