



YORKVILLE COMMUNITY UNIT
SCHOOL DISTRICT 115

Board Workshop

AUGUST 24, 2024

DRAFT





YORKVILLE COMMUNITY UNIT
SCHOOL DISTRICT 115

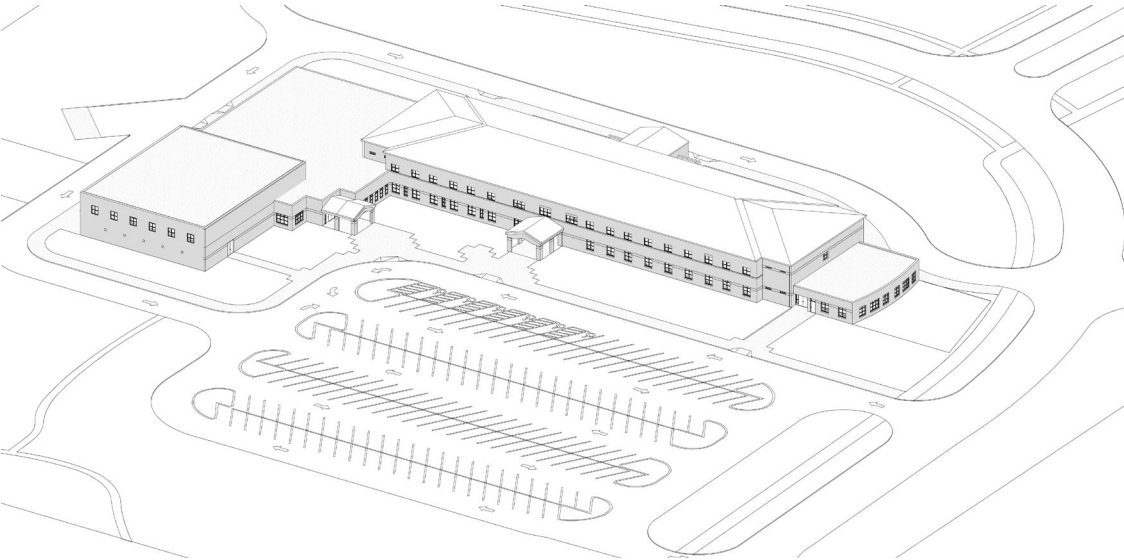
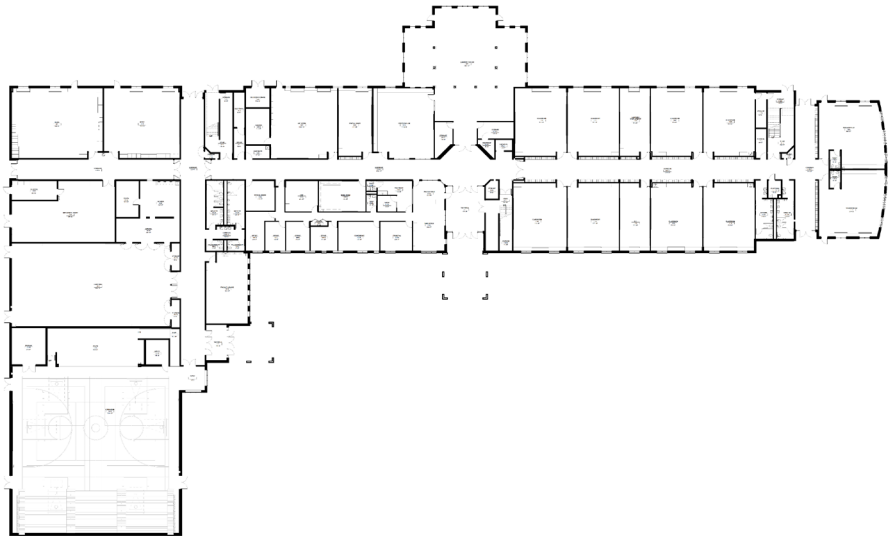
Agenda

1. Building / Site Challenges & Observations
2. Building Utilization
3. Student Cohort Demographics
4. Boundaries / Kasarda Report
5. Curriculum Vision
6. Facility Infrastructure
7. Facility Expansion Vision Board Discussion
8. Community Engagement Discussion
9. Closing Comments



Building / Site Challenges & Observations

BUILDING / SITE CHALLENGES & OBSERVATIONS



Facility Assessment: Yorkville District 115
Yorkville Middle School
Issued: 8/16/2024 - Draft



PURPOSE

Yorkville District 115 has identified the need to evaluate their existing facilities and assess the current building conditions as well as the likely life expectancy for the various components of the facilities. This is in order to identify likely replacement costs for those components reaching the end of their useful performance life within the next 10 to 15 years. The scope of this study is to identify those building systems or components that can be maintained or replaced using budgeted designated funds.

Conditions change with time, and this evaluation, along with the funds allocated to cover the associated expenses should be reviewed and revised periodically as the School District needs evolve. Unanticipated expenses can develop for a number of reasons including accelerated use or changes in use patterns, accident, or deferred general maintenance. Such reviews should include updating baseline costs and dates for the components or assemblies identified in this study.

Costs are calculated at 2024 levels and escalated at the following presumed annual rate of inflation:
3.39% Annual Rate of Inflation

Yorkville Middle School 178000000

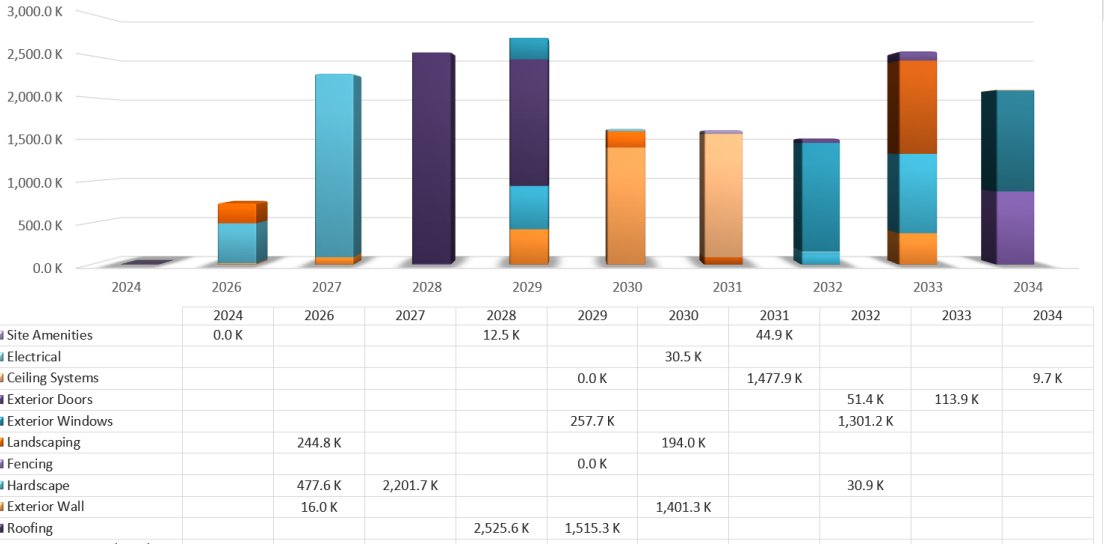
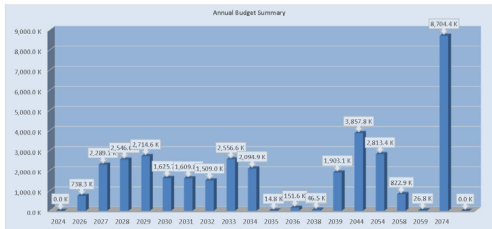
NOTES

Evaluation of building conditions focused on the elements likely to be included in the budget for items expected to require replacement or renovation as evaluated. Equipment, materials, or assemblies that are nominal in cost are not included. This is therefore not a comprehensive list but does identify major expenses that are likely to be incurred in the foreseeable future. All values are estimates -Need to review and finalize wordings-

Repair/replacement work items do not include A/E Design Fees in the cost.

This report summarizes the costs as follows:

- Cost by Category
 - Summary of cost by category and year
 - Breakdown of each category to show the annual cost by component for that category.
- Cost by Funding Source
 - Summary of cost by funding source and year
 - Breakdown of each funding source to show the annual cost by component for that funding source.
- Cost by Replacement Year
 - Shows the detailed cost by year. Includes the current cost and escalated costs based on presumed rate of inflation



Common Themes – Exterior & Building Enclosure

- Sites (landscaping and paving) are well maintained
- Most deteriorated roofs are at YHSA, YHA, YGS, and BGS – replacement cycles should be prioritized at these buildings
- Majority of other buildings' roofs are in good shape
- Drop-off/pick-up sequencing at some schools was noted by District staff to be challenging (YIS)
- Windows in many buildings were difficult to open



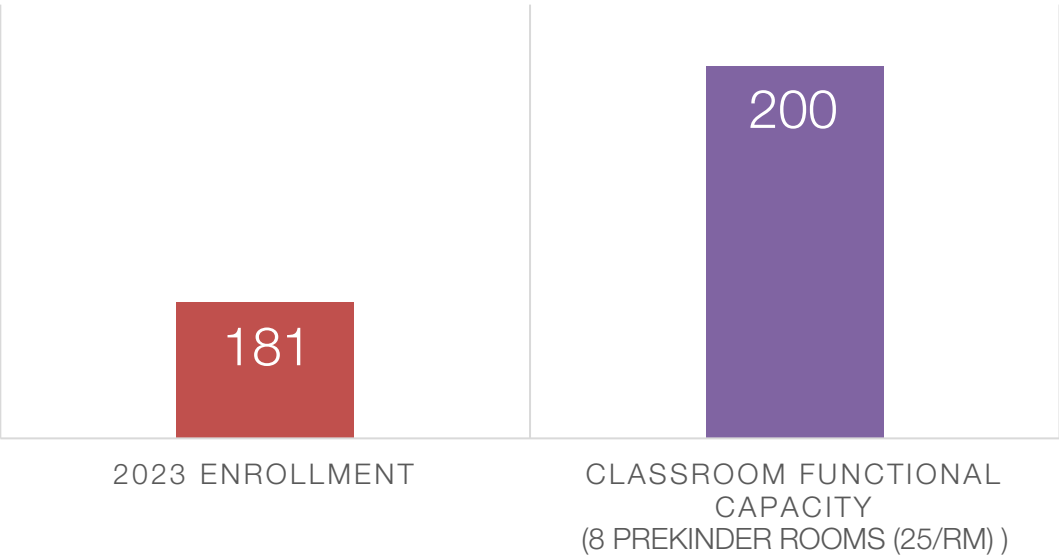
Common Themes – Interior

- Buildings were clean, organized, and well maintained
- Majority of 2017 HLS items were addressed
- Corridor doors at sister schools operate inconsistently
- Normal wear-and-tear of finishes; older carpet showing staining
 - Exception at YHS – dry erase wall paint has failed (peeling; heavy ghosting)
- Ceiling tiles in many buildings are sagging
- Casework in older buildings has exceeded its useful life
- Toilet rooms in many buildings are aesthetically dated, and some in older building sections are not ADA-compliant
- Room signage/numbering at some schools is unclear, missing, hard to find and/or not ADA-compliant
- Some HVAC units at older buildings are nearing end of useful life

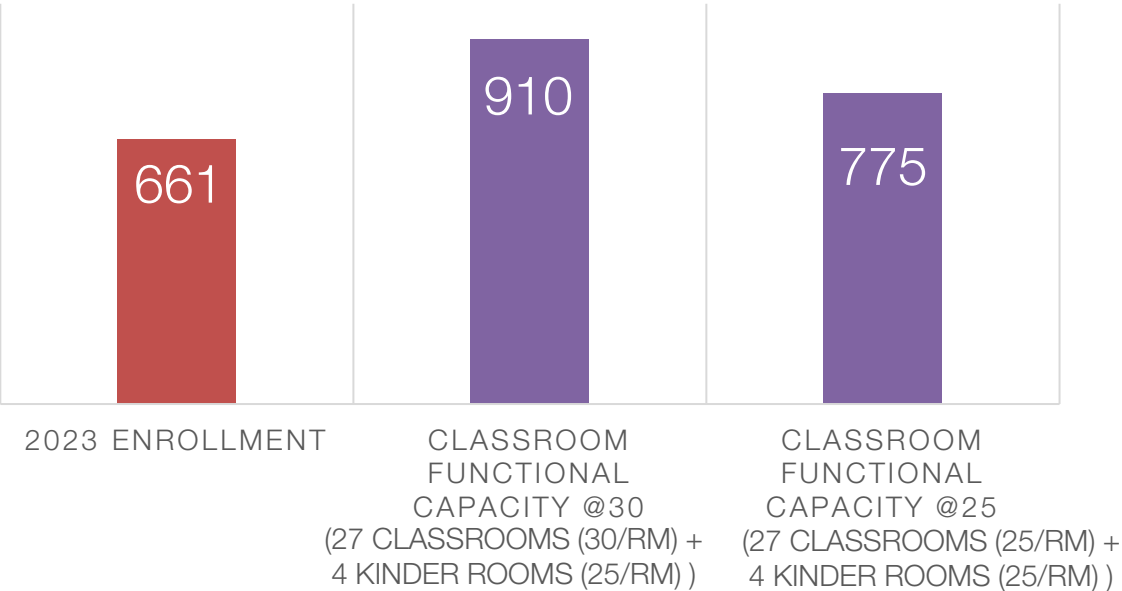
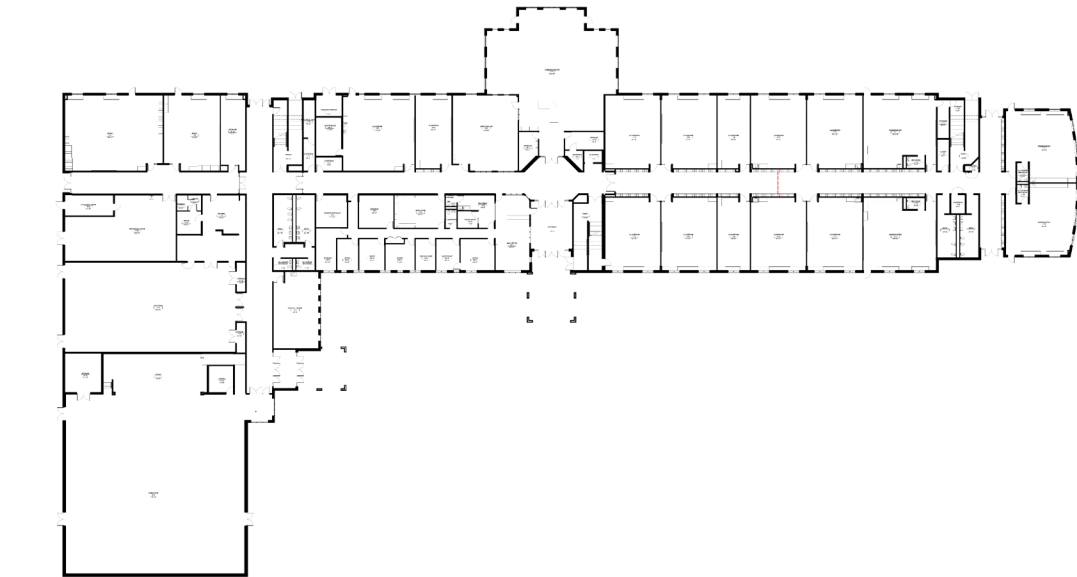


Building Utilization

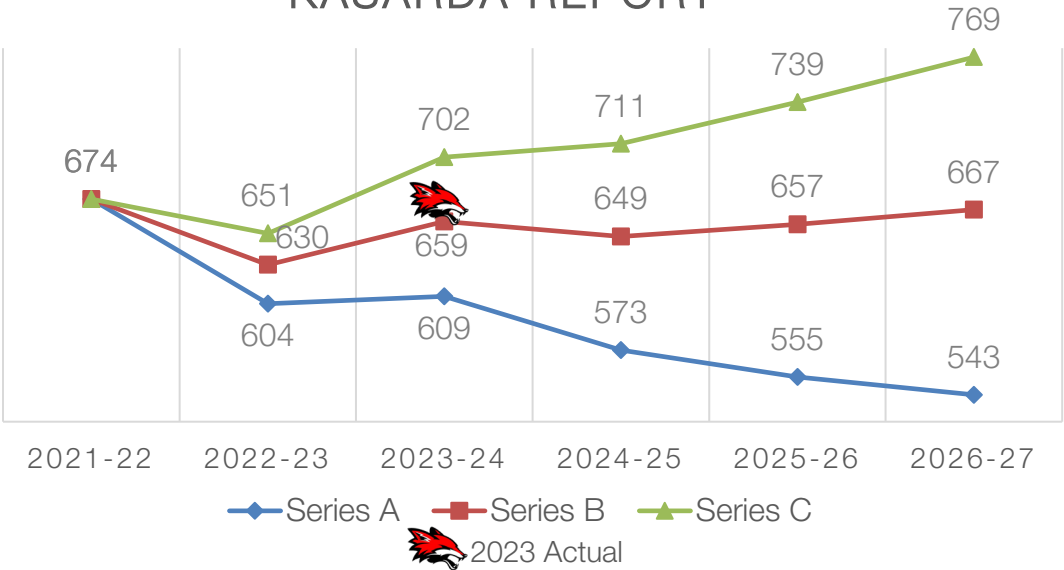
Early Childhood Center (PK)



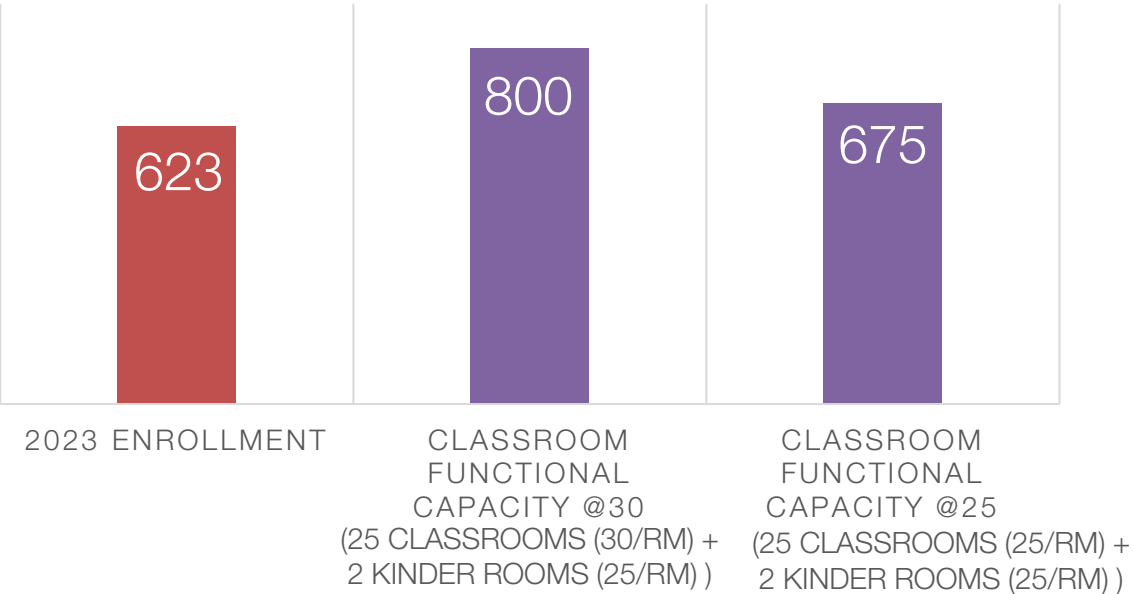
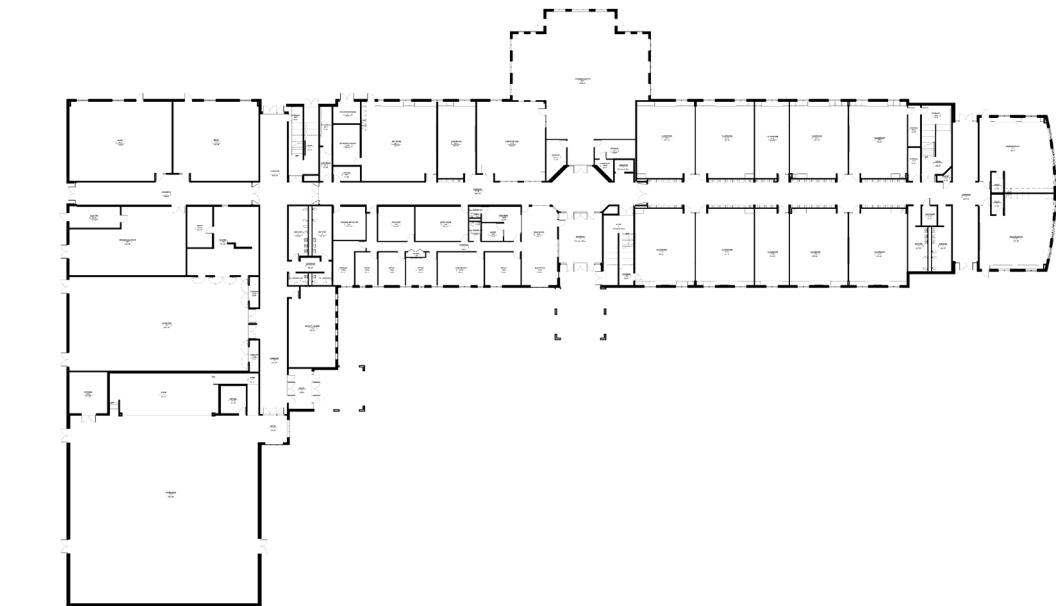
Autumn Creek Elementary School (K-6)



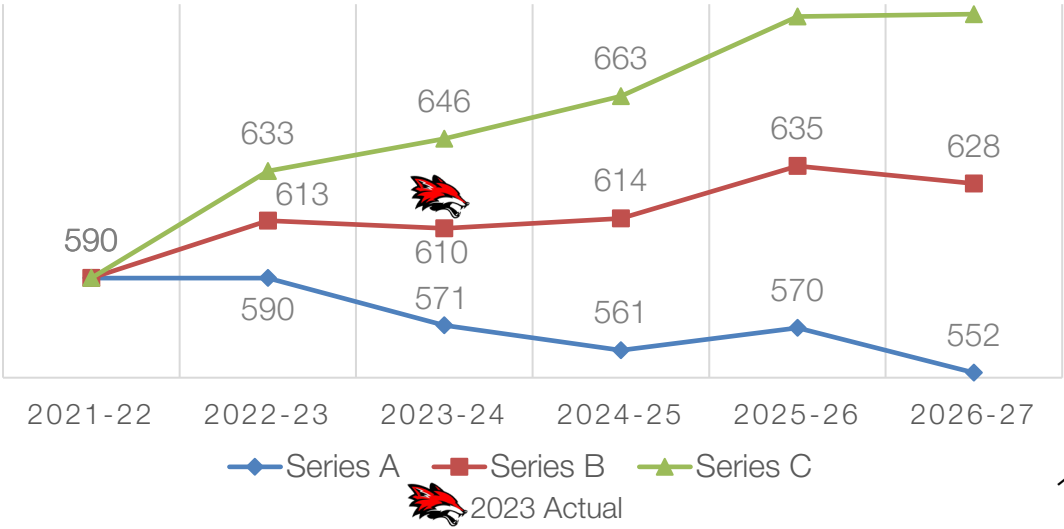
ENROLLMENT PROJECTIONS – KASARDA REPORT



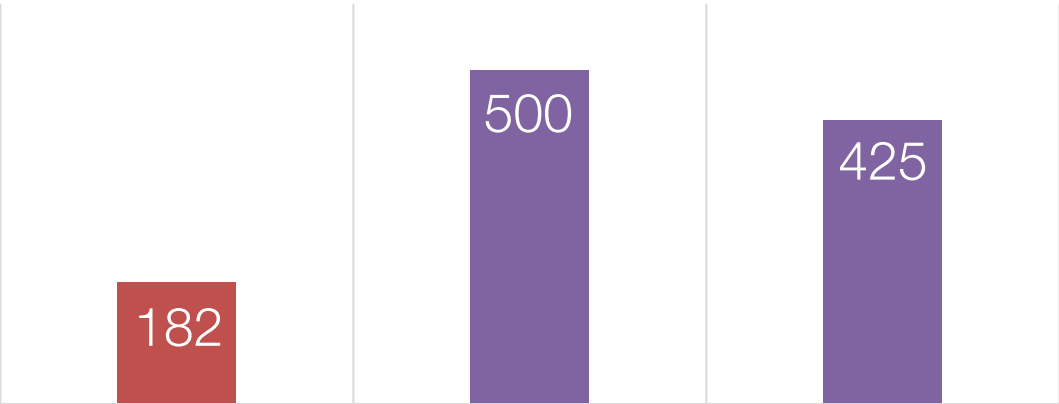
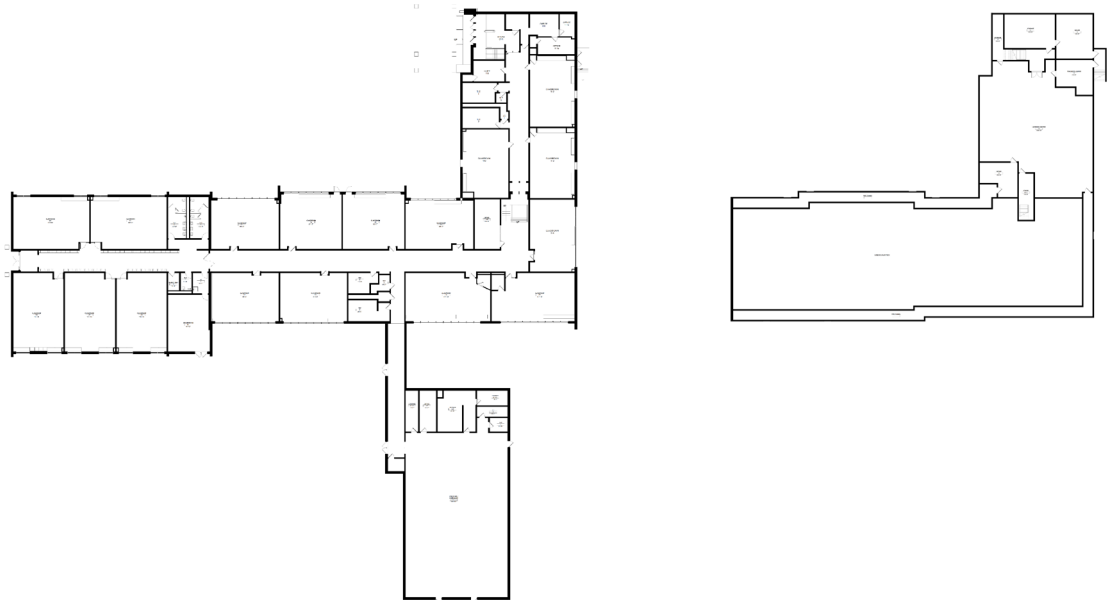
Bristol Bay Elementary School (K-6)



ENROLLMENT PROJECTIONS – KASARDA REPORT



Bristol Grade School (PK-3)



2023 ENROLLMENT

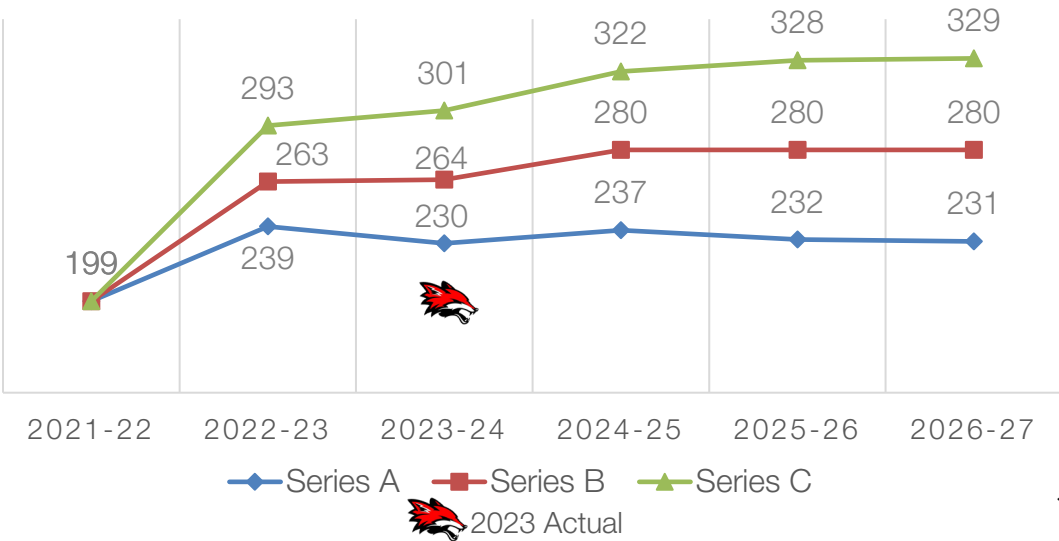
CLASSROOM
FUNCTIONAL
CAPACITY @30

(15 CLASSROOMS (30/RM) +
2 PREK-KINDER ROOMS (25/RM))

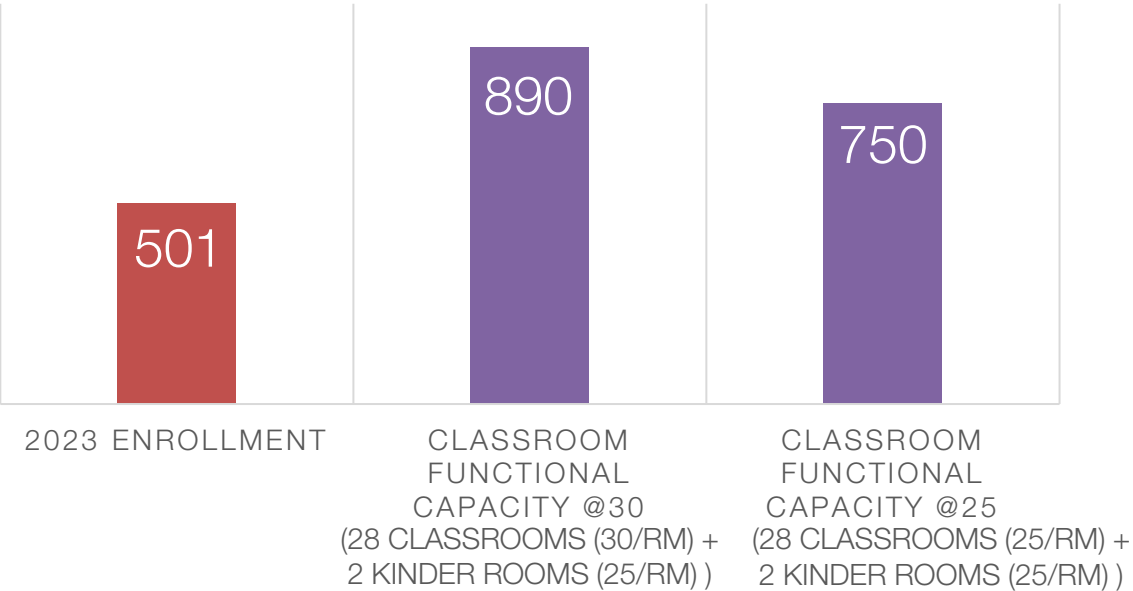
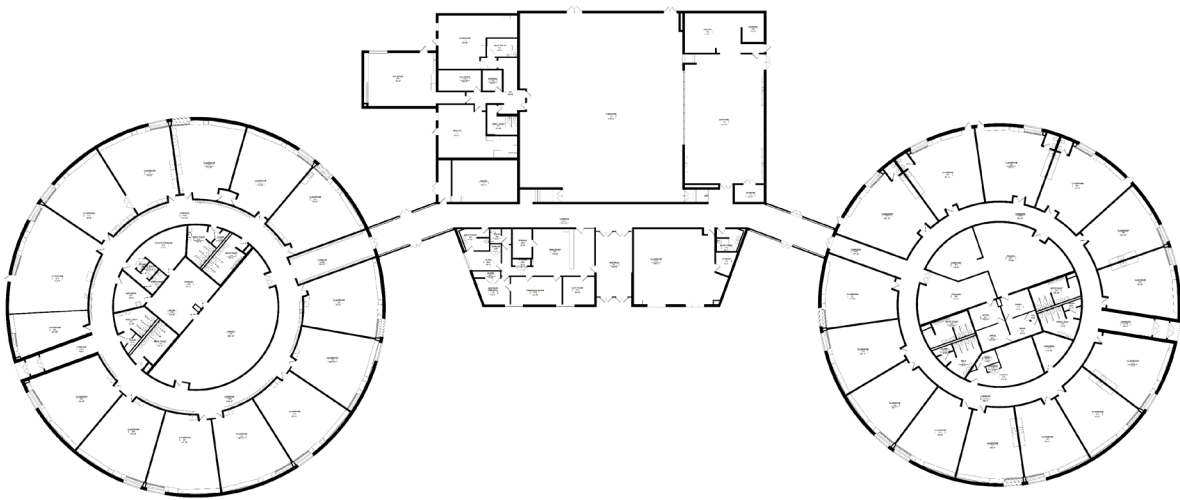
CLASSROOM
FUNCTIONAL
CAPACITY @25

(15 CLASSROOMS (25/RM) +
2 PREK-KINDER ROOMS (25/RM))

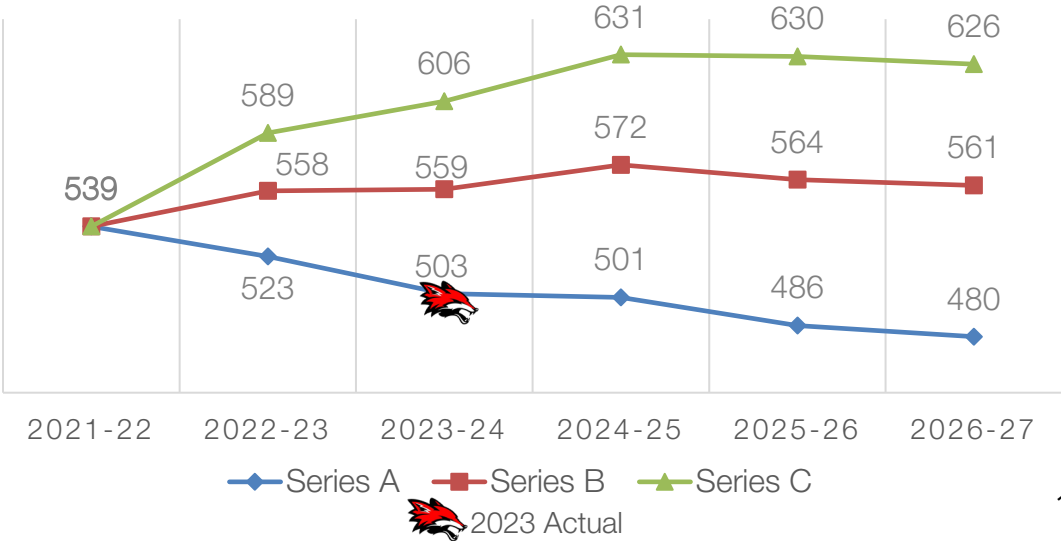
ENROLLMENT PROJECTIONS – KASARDA REPORT



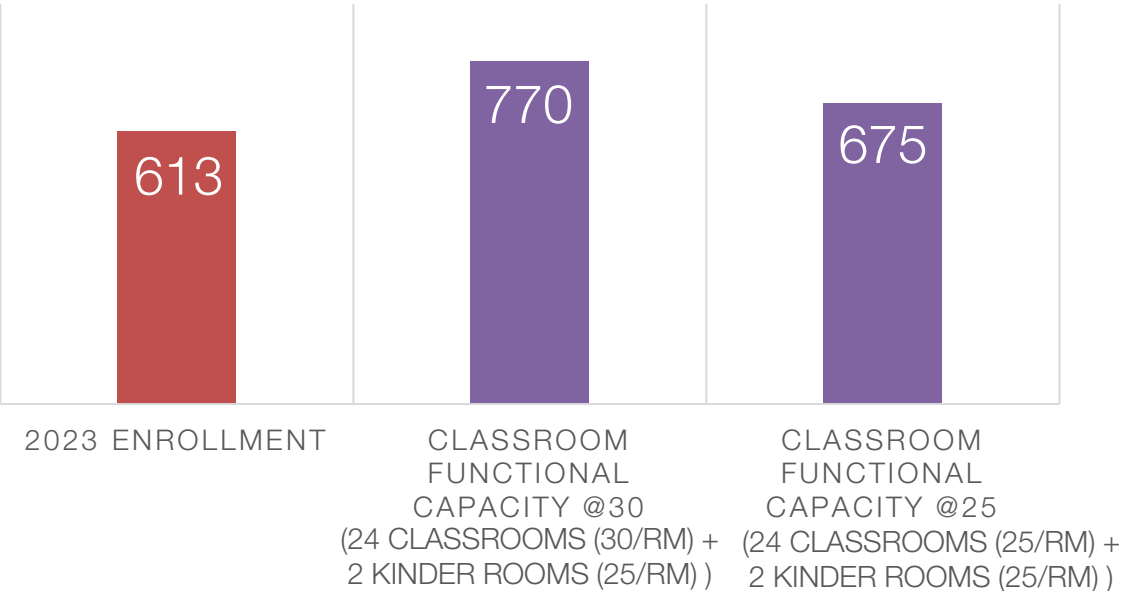
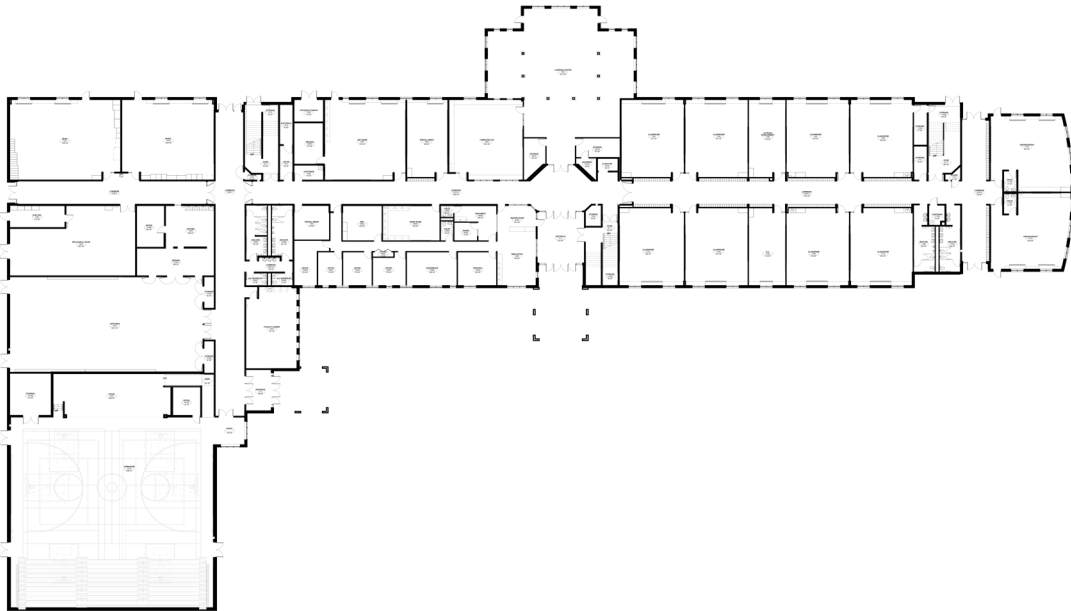
Circle Center Grade School (K-3)



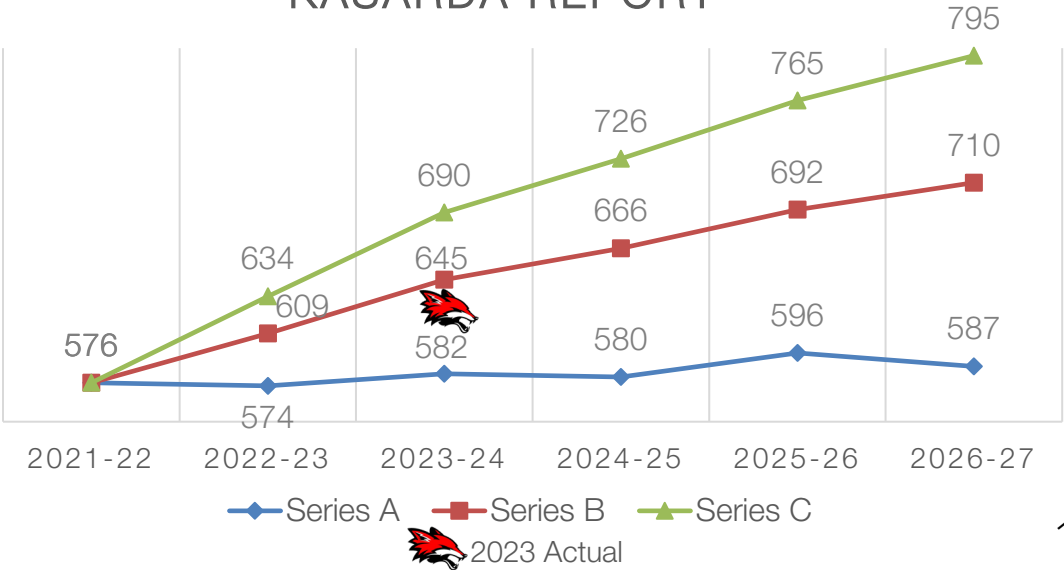
ENROLLMENT PROJECTIONS – KASARDA REPORT



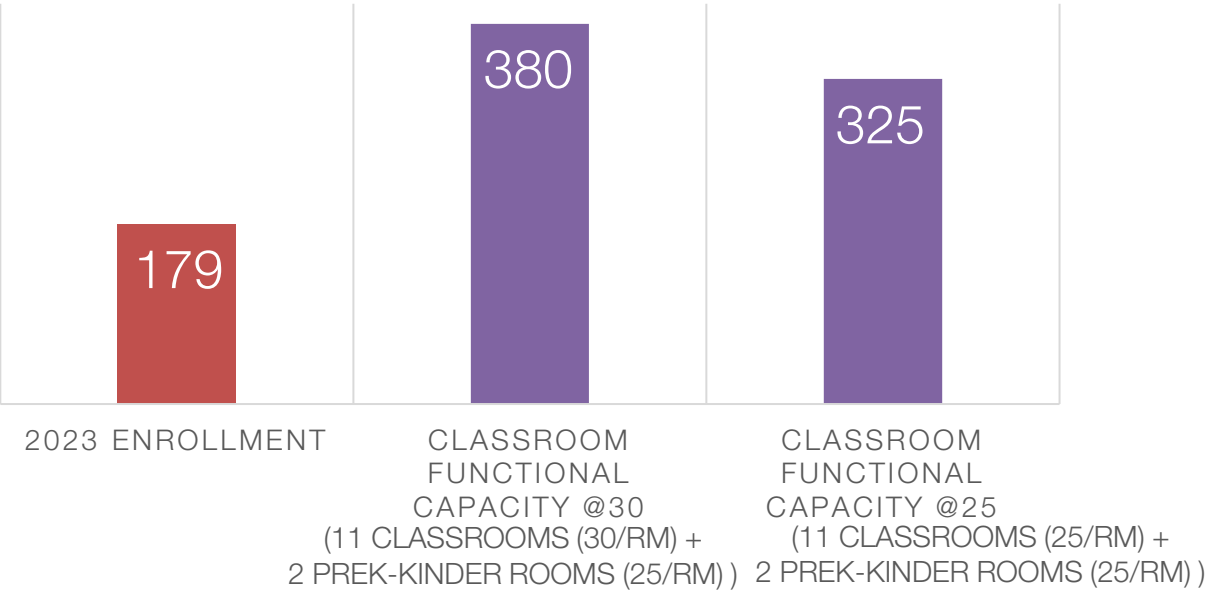
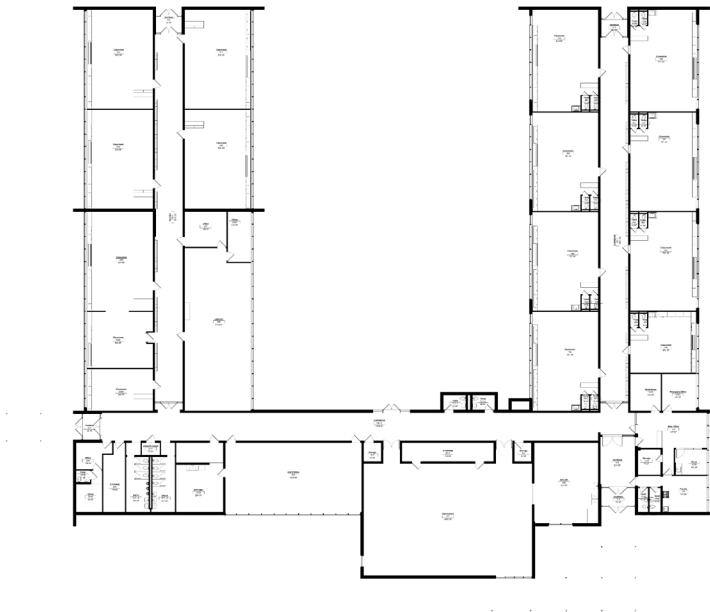
Grande Reserve Elementary School (K-6)



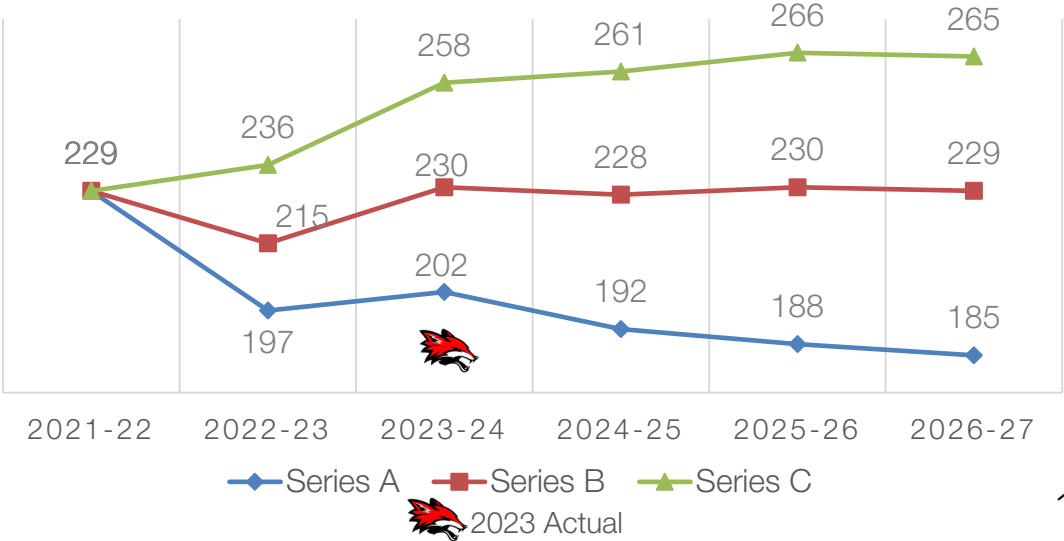
ENROLLMENT PROJECTIONS – KASARDA REPORT



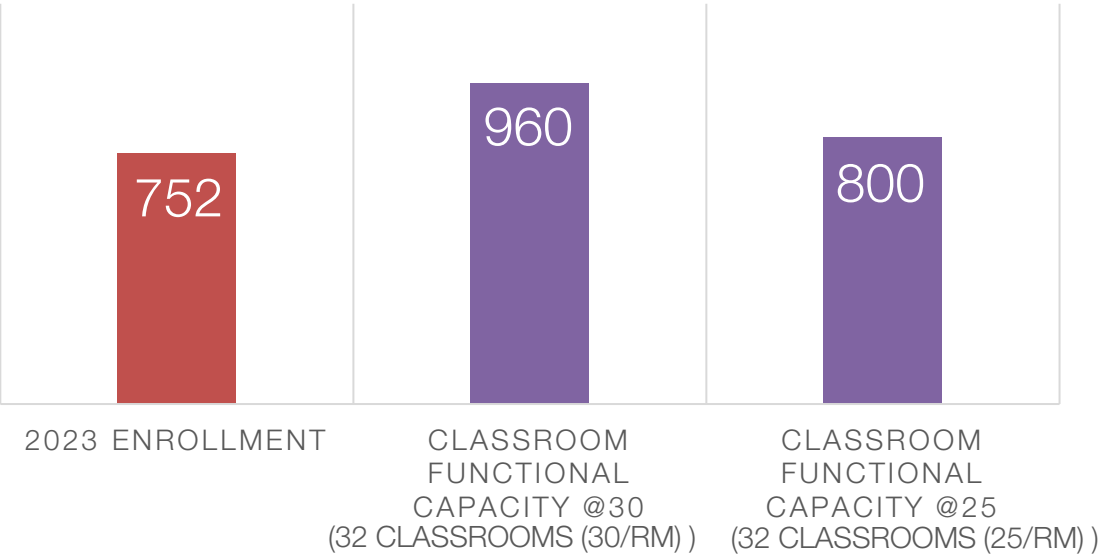
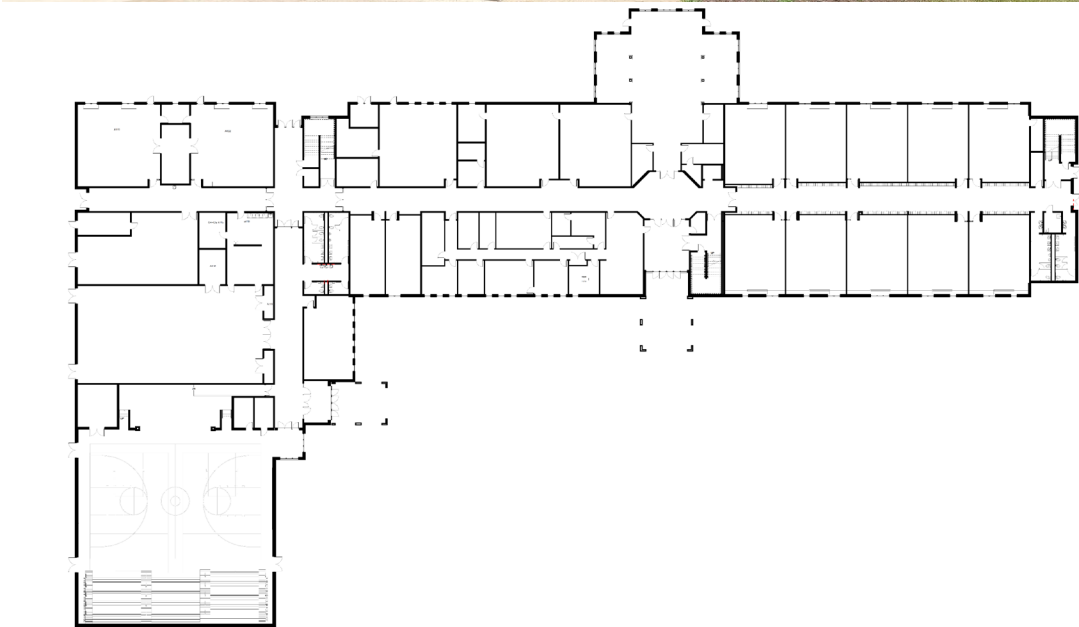
Yorkville Grade School (PK-3)



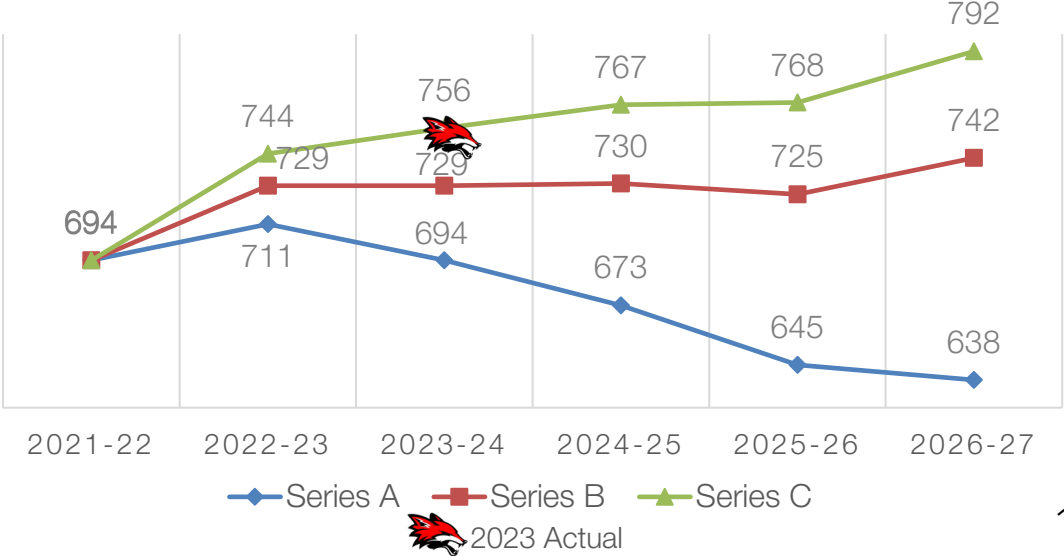
ENROLLMENT PROJECTIONS – KASARDA REPORT



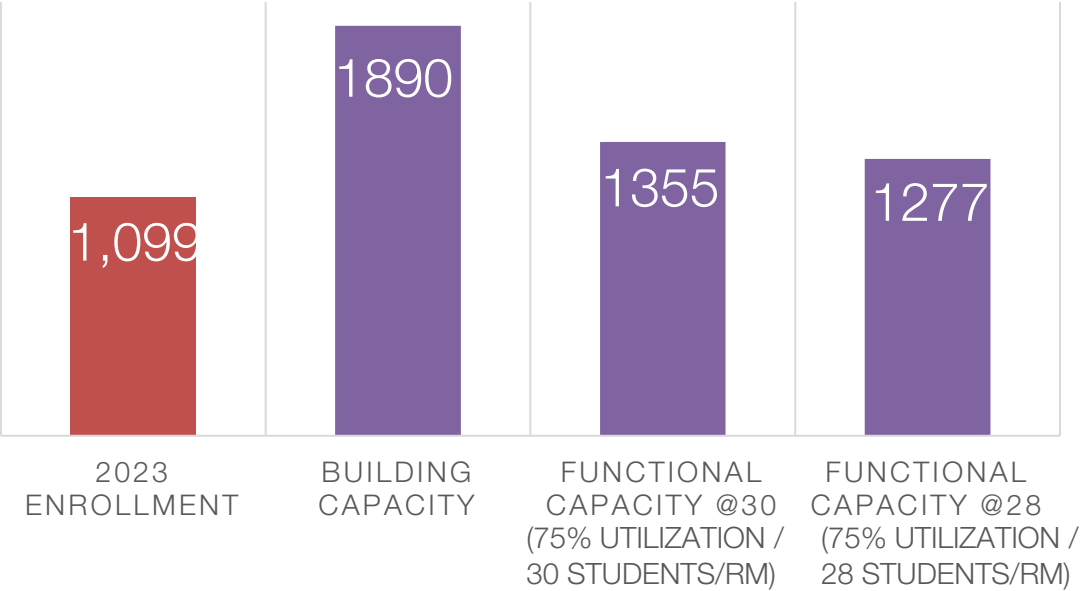
Yorkville Intermediate School (4-6)



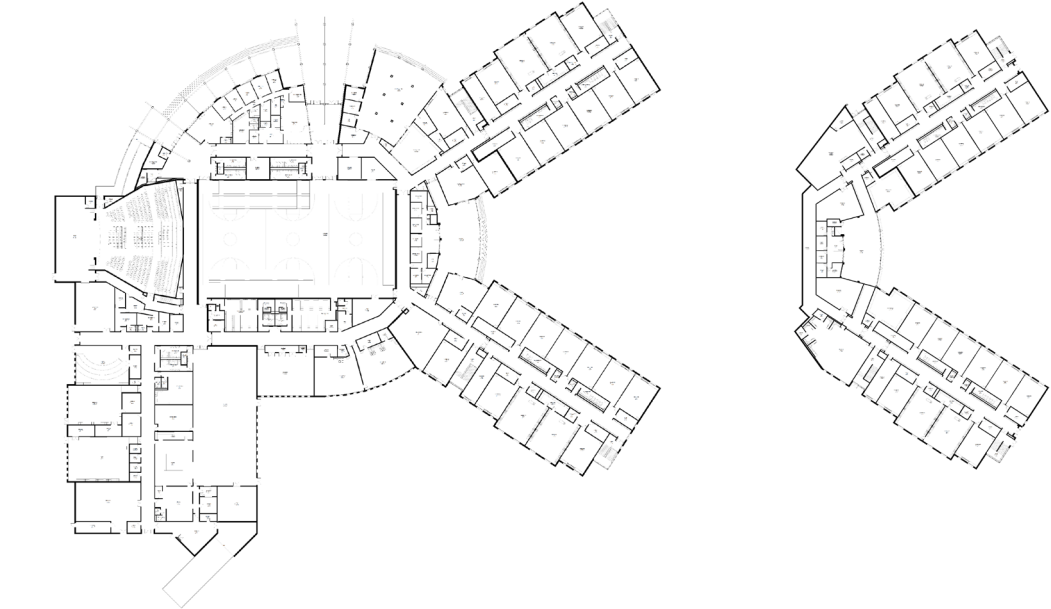
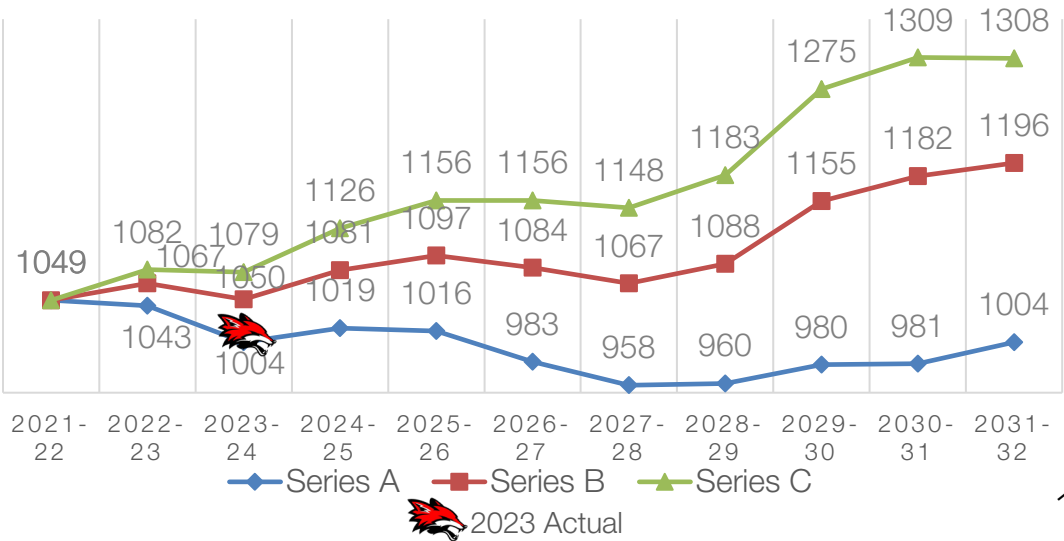
ENROLLMENT PROJECTIONS – KASARDA REPORT



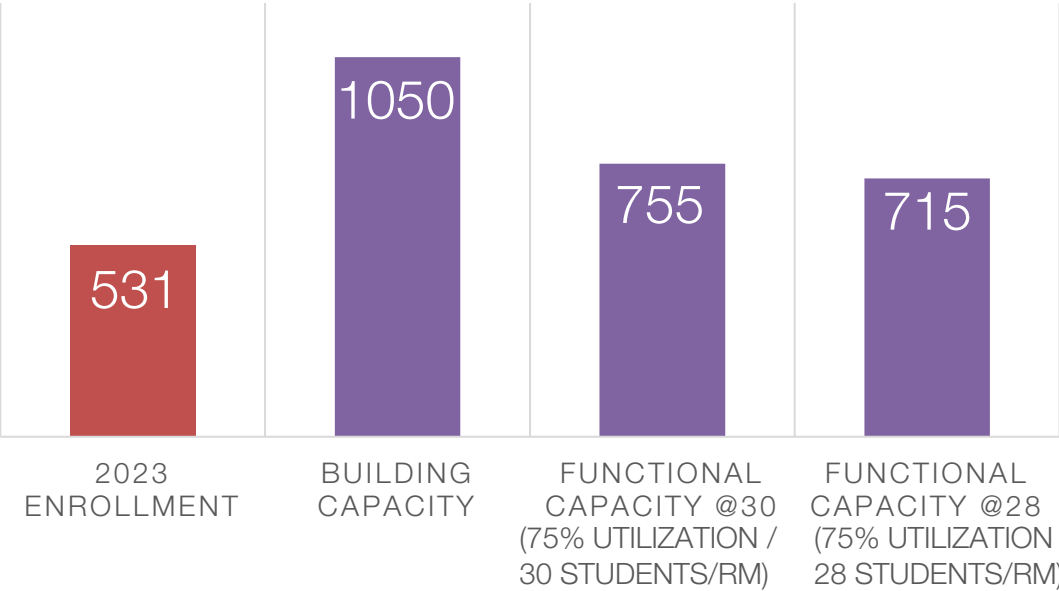
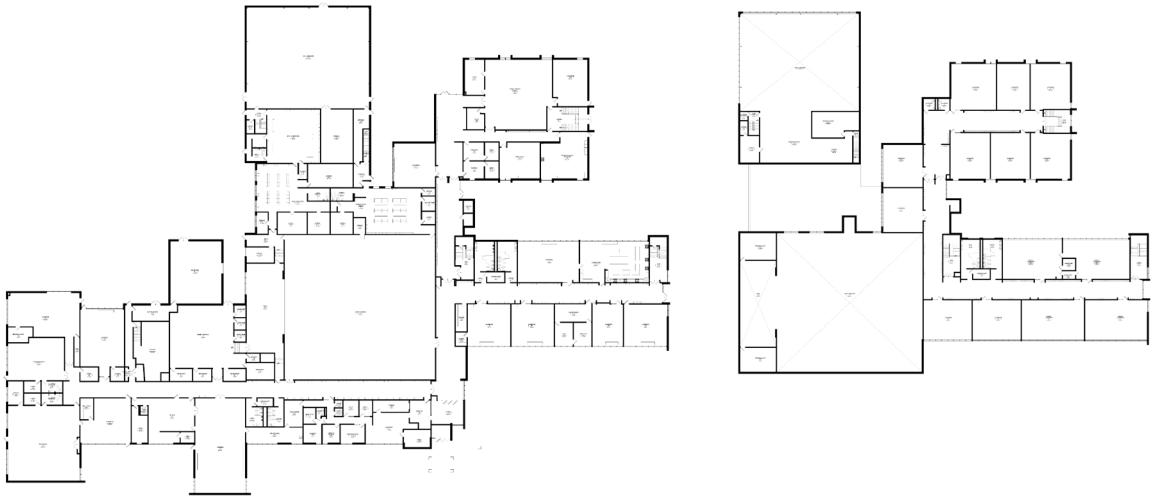
Yorkville Middle School (7-8)



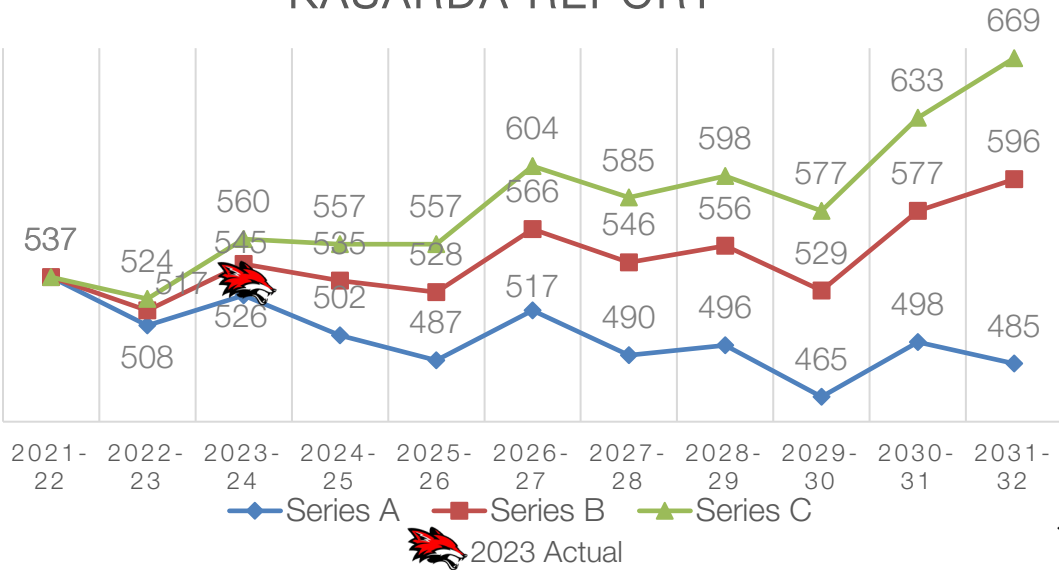
ENROLLMENT PROJECTIONS – KASARDA REPORT



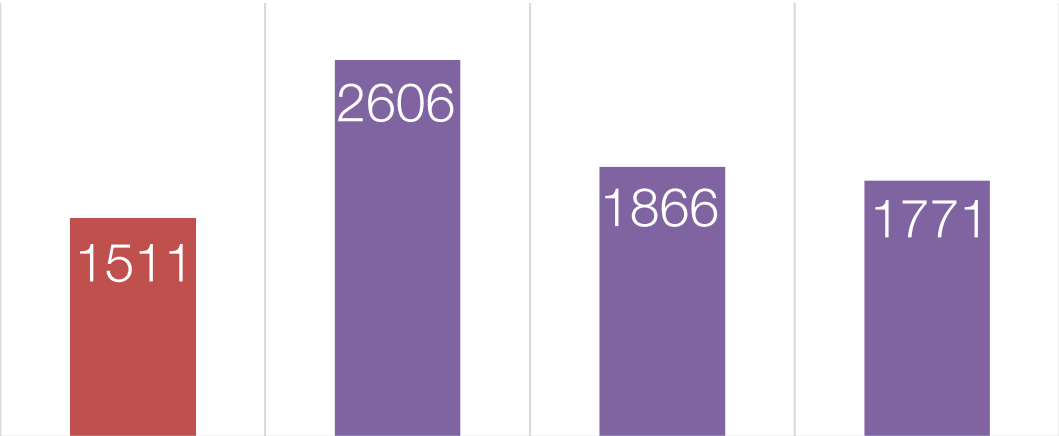
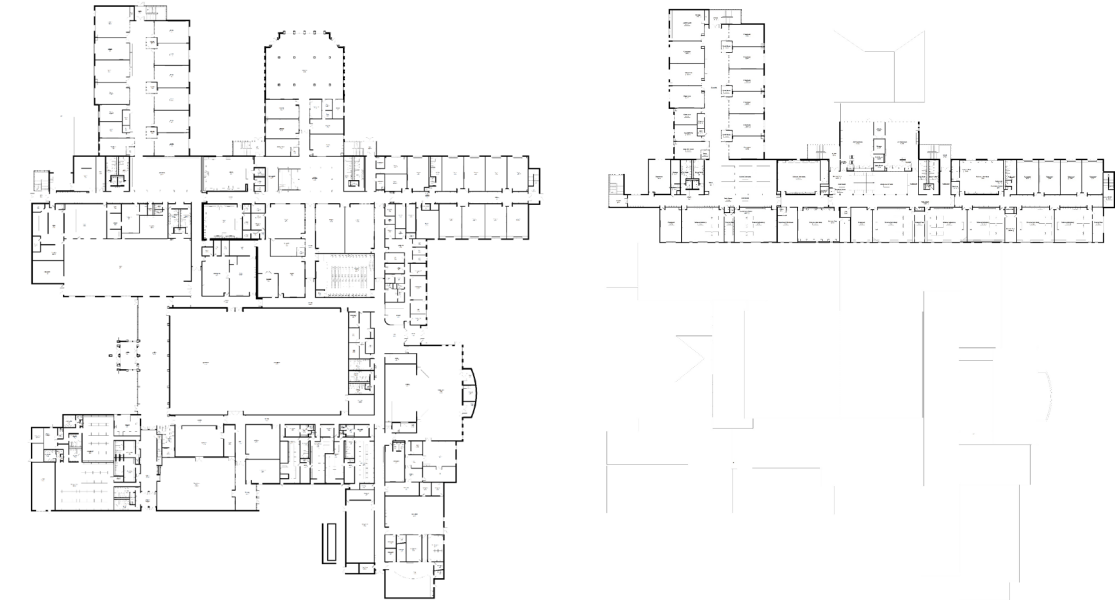
Yorkville High School Academy (9)



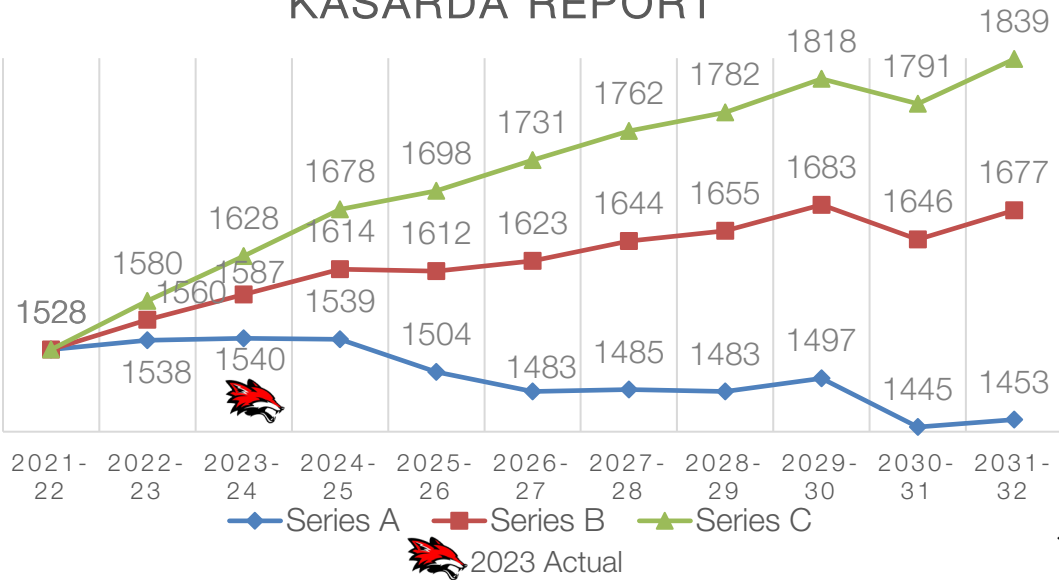
ENROLLMENT PROJECTIONS – KASARDA REPORT



Yorkville High School (10-12)



ENROLLMENT PROJECTIONS – KASARDA REPORT



Student Cohort Demographics

Boundaries/Kasarda Report

Curriculum Vision

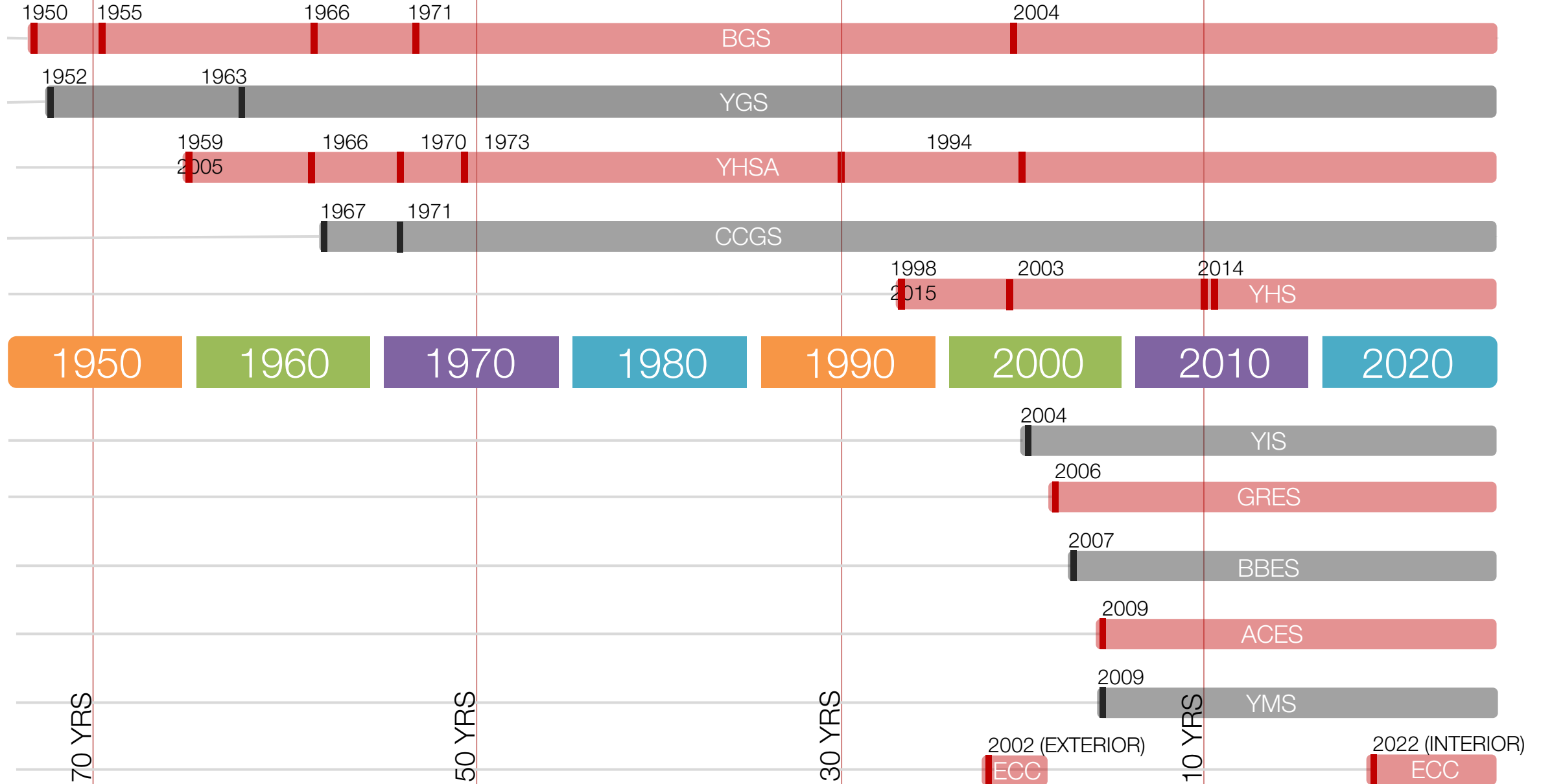
CURRICULUM VISION

CURRICULUM

Board Workshop

Facility Infrastructure

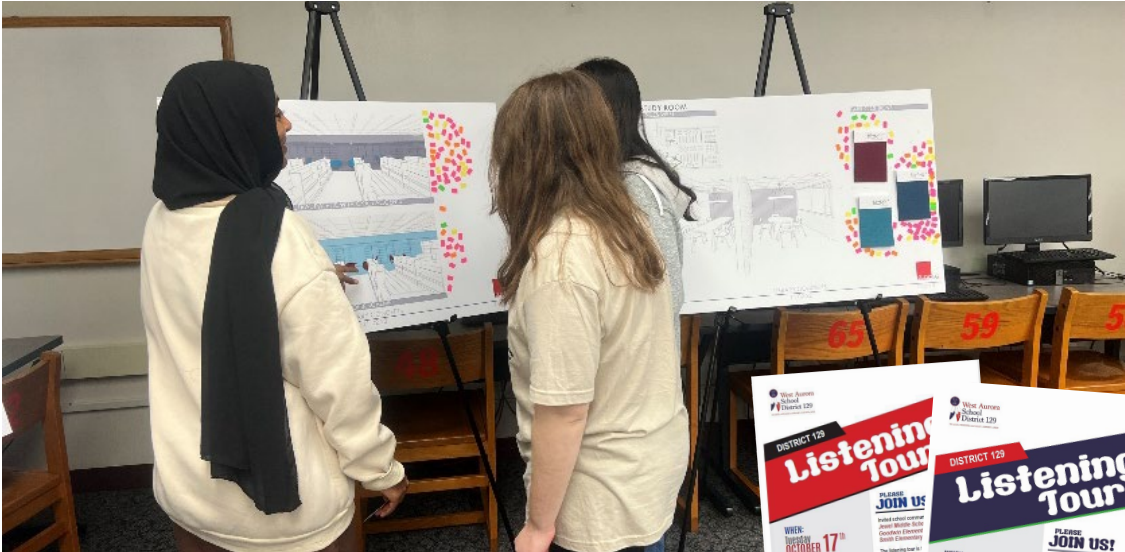
FACILITY INFRASTRUCTURE



Facility Expansion Vision Board



Community Engagement





YORKVILLE COMMUNITY UNIT
SCHOOL DISTRICT 115

Thank you!

