



Kumison di Superintendenti: Planiamentu di Finansiamentu Ajuda Federal 13 di Maiu di 2021



RIGRESA| RIKUPERA| RIMAJINA

Baziadu na planu stratejiku orientadu pa kumunidadi, BPS ta investi kes fundus di ajuda federal li di un vez pa rigresa dretu, rikupera forti y rimajina kuze ki é pusivel pa nos alunus.





I. INTRODUSON

II. GUARDRAILS

III. PROXIMUS PASUS

IV. KUMENTARIU
PUBLIKU

AJENDA

- I. BENVINDU Y INTRUDUSON (35 minutus)
- II. DISKUSON PA GUARDRAILS (50 minutus)
- III. PROXIMUS PASUS (5 minutus)
- IV. KUMENTARIU PUBLIKU (18:30 ti)



I. INTRUDUSON

II. GUARDRAILS

III. PROXIMUS PASUS

IV. KUMENTARIU PUBLIKU

I. INTRUDUSON (30 min)

- A. Superintendenti ta da Benvindu a tudu y Funson di Kumison
 - B. Aprizentason
 - C. Normas, prusesus y akordus
 - D. Planu Stratejiku BPS é fundason di nos trabadju

Nos Akordus Kompartilhadus na Planu Stratejiku BPS *



Boston Public Schools
20/25 Strategic Plan

VALUES

“JUICE”: JOY, UNITY, INCLUSION,
COLLABORATION, AND EQUITY

MISSION

EVERY CHILD IN EVERY CLASSROOM IN EVERY
SCHOOL RECEIVES WHAT THEY NEED.

VISION

A NATION-LEADING, STUDENT-CENTERED
PUBLIC SCHOOL DISTRICT PROVIDING
AN EQUITABLE, AND EXCELLENT, WELL-
ROUNDED EDUCATION, THAT PREPARES
EVERY STUDENT FOR SUCCESS IN COLLEGE,
CAREER, AND LIFE.

theory of action

IF we give every student what they need,
earn the trust and true partnership
of families, community members,
and stakeholders through authentic
engagement and shared leadership,
deliver excellent service to students
and families, and provide educators and
staff with professional development and
clear expectations...

THEN we will become a high-performing,
nation-leading district that closes gaps and
improves life outcomes for each student.

* Dirivadu di Tour di Esktuta di 100 Dias di Superintendenti Maiu-Otonu 2019



I. INTRODUSON

II. GUARDRAILS

III. PROXIMUS PASUS

IV. KUMENTARIU PUBLIKU

II. 4 GUARDRAILS

- A. Intruduson pa Finansiamentu Federal di \$ 400 milyon au longu di 3
 - B. Nu sta aprizenta 4 Guardrails pa orienta es trabadju
- C. 2 di 4 Guardrails sta na forma di raskunhu y ta ser refinadus pur meiu di prusesu di engajamentu ku Kumison, task-force BPS, famílias, alunus, kumunidades di skola y parserus.

Diskrison di Finansiamentu Federal di Ajuda

\$400M

BPS sta kandidata kuazi US \$ 400 milhons di Lei di Ajuda, Ajuda y Siguransa Ekonomika Coronavirus (CARES) y di Fundu di Emergênsia pa Skolas di Ensino Baziku y Sekundariu (ESSER) na próximos três anos.



Nu sta plania trêș anus di finansiamentu

Planu di Sustentabilidi ta kumesa na Primeru Anu

Koneta eksplisamenti planus distrital y eskolar; alavanka pa mudansas impaktantis



Plania, rifleti y ajusta au longu di trêș anus

Garanti involvimentu skola-kumunidadi



Guardrail 1

Diretrizes pa Skolas Publiku di Boston

- **Planu Stratejiku BPS é nos fundason**
- % pa kustus di rigresu y rikuperason kunprimitidus, komu aprendizagem a distansia y sirvisus kompensatorius
- % pa inovason
- % di responsabilidadis di y aumenta ekuidadi y inpaktu
- % pa garanti ki infrastrutura BPS ta apoia nisisidadis

Guardrail 2

Diretrizes Federal y Di Stadu

- **20%** devi ser gastu na rikuperason (skola di veron, etc)
- **Mas di \$10,000** devi ser gastadu na saudi mental
- Inwestimentus di kapital devi apoia rigresu y rikuperason akademiku, MAS aprovason prévia é nesisariu
- Fundus ka podi ser uzadu pa paga salárius di izekutivus ou paga sindikatus / asosiason
- Nu BODI invisti na Titulu I/II/III/IV katigoria di atividadis



Guardrail 3 (pa ser refinadu): Lotiamentus

- **Invistimentus Stratejikus Inplantadus Sentralmenti na Tudu Distritu: X%**

Lotiamentus ta ser orientadu pa metas di Planu Stratejiku di BPS na nos Fazi di Implementason di Rigresu, Rikuperason y Rimajinason. Monitoramentu trimestral ta garanti implementason, inpaktu y transparênsia.

- **Invistimentus rilasionadus a Planu Skolar: X%**

Invistimentus direktus na skola ta ser baziadus na fórmulas y diterminadus pa Planus di Kualidadi di Skola, involvimentu di kumunidadi di skola, ki ta inklui Mezas Ridondu di Ekuidadi di Skola y un prusesu di orsamentu kolaborativu pa garanti apoiu akademiku ekuititivu y otus apoius pa alunus.

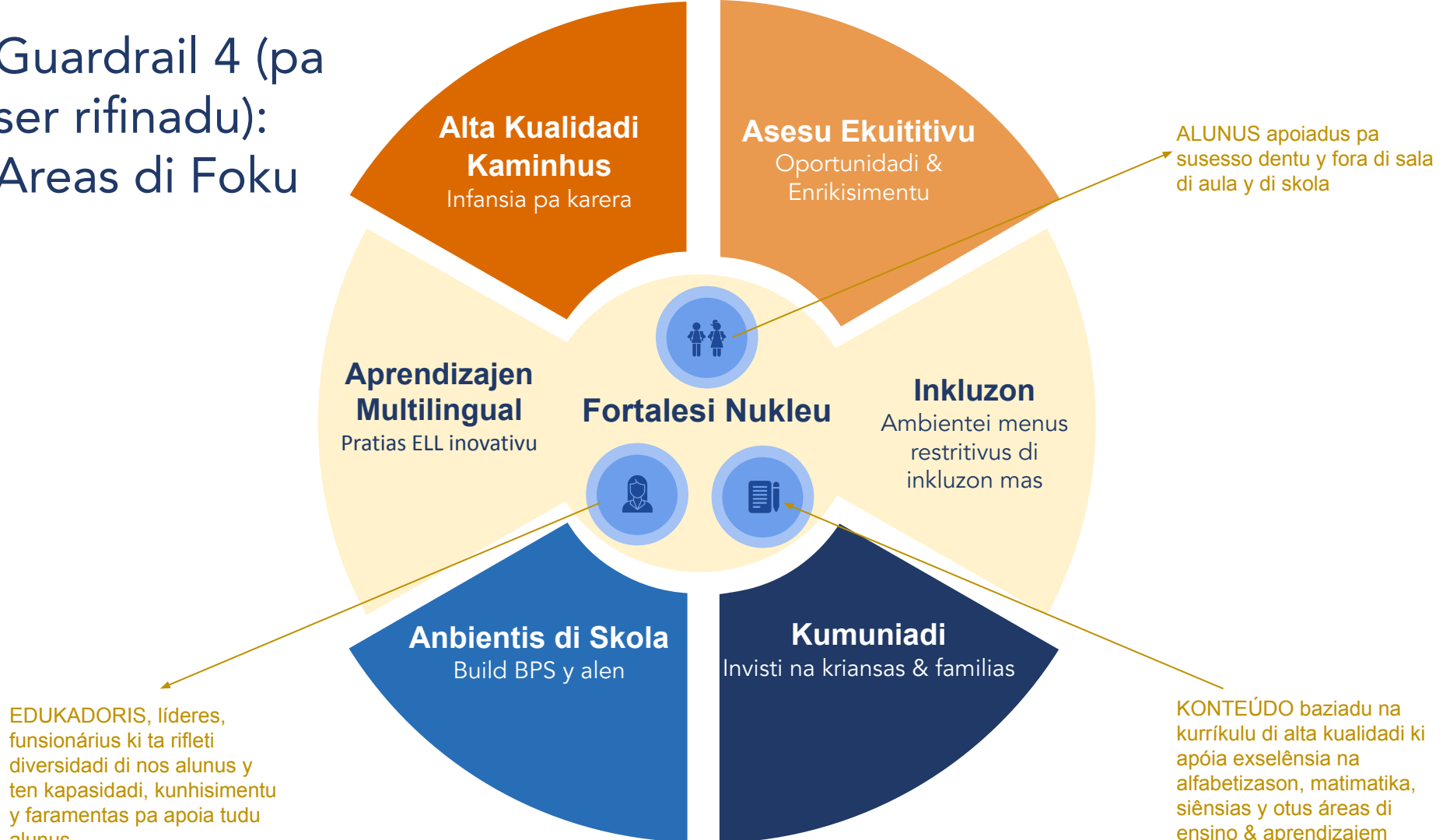
- **Invistimentus na Inovason Rijional y Di Skola: X%**

Inovason ta prumovi riplikason y skalas di midjoris pratikas y di kes ki ta apoia "rinvenson" di edukason y di apoiu pa alunus di formas baziadus na evidênsias.

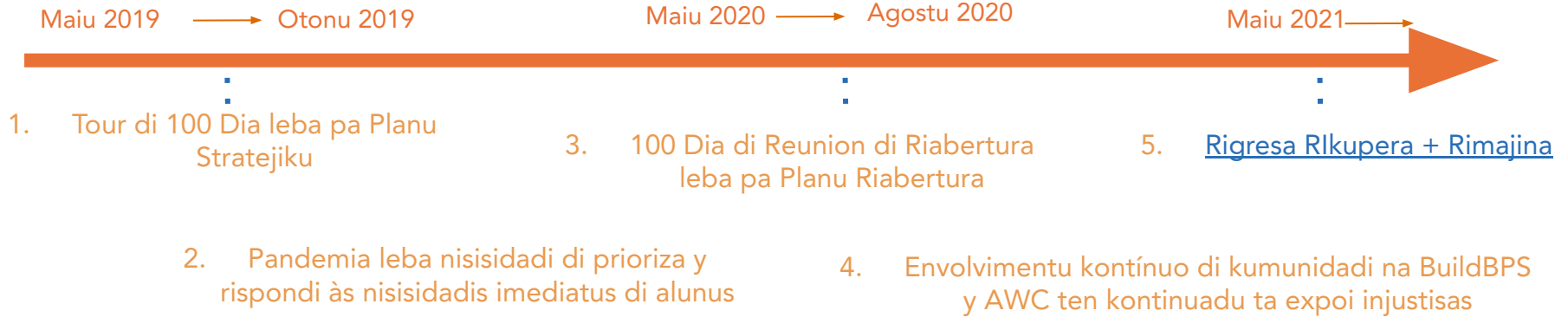
- **Invistimentus en Parseria ku Kumunidadi: X%**

Subsídios di parseria rijional y skolar ta prumovi abordagens baziadus na kumunidadi, di atendimentu pa alunu y à famílija pa fornesi un ecosistema di kuidadus pa jovens y adultus, nutrindu se dizenvolvimentu.

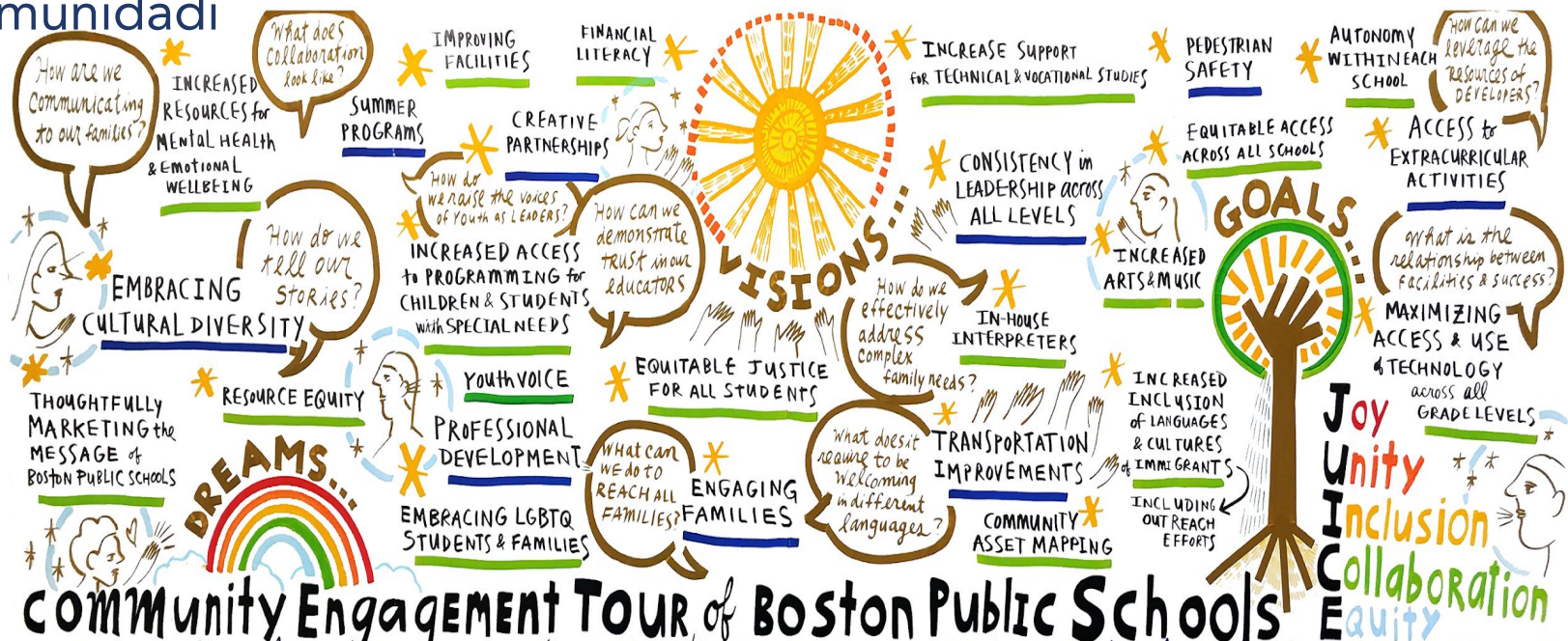
Guardrail 4 (pa ser refinadu): Areas di Foku



Modi ki nu ta dizenvolvi Areas di Foku: Linha di Tenpu di Diretrizes



Modi ki nu ta dizenvolvi Areas di Foku: Feedback di Skola & Kumunidadi



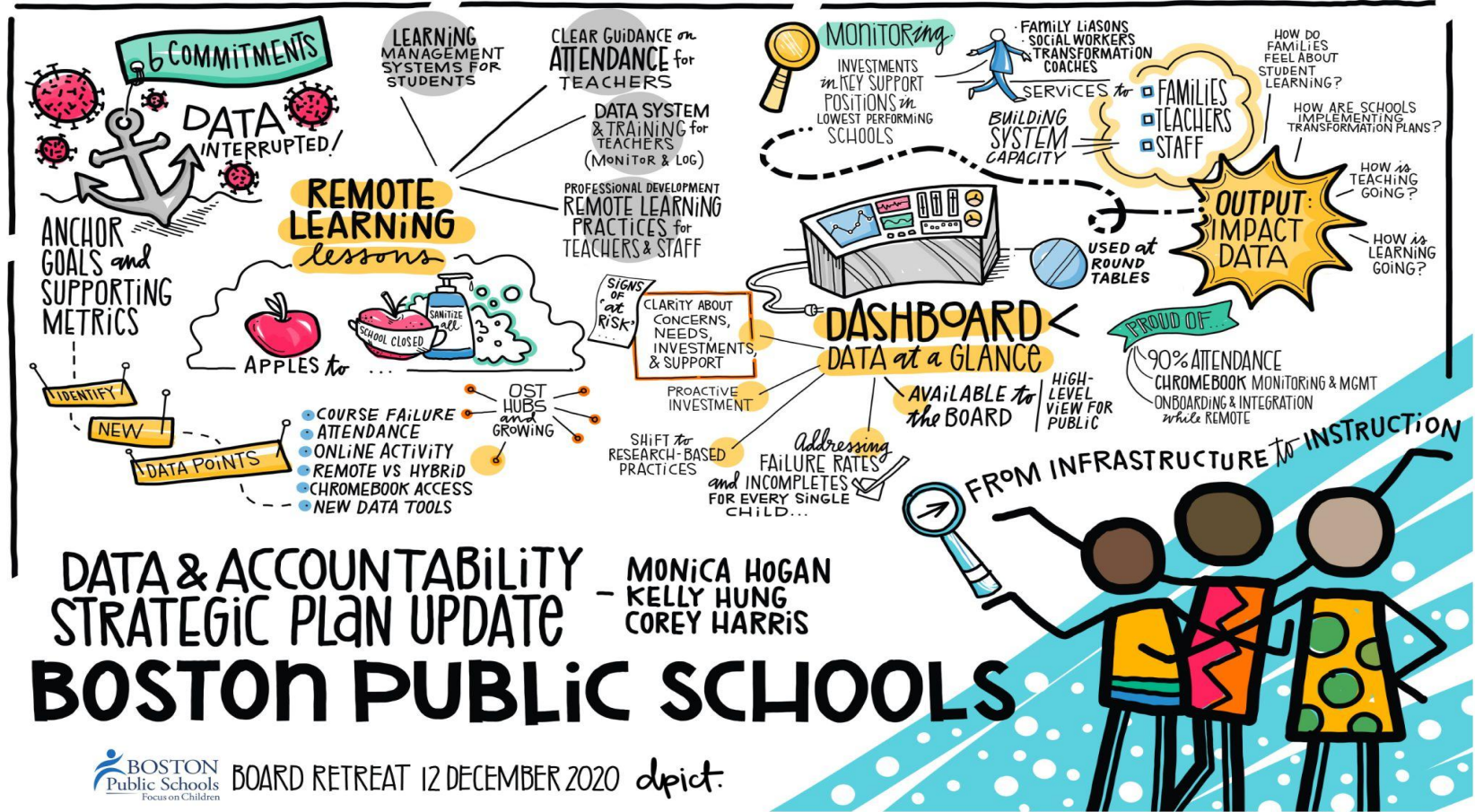
COMMUNITY ENGAGEMENT TOUR of Boston Public Schools
 Allston-Brighton Community Meeting at Brighton High School // October 29, 2019 **



Allston-Brighton Community Meeting at Brighton High School | October 29, 2019
 Community Engagement Tour of Boston Public Schools

Graphic Facilitation by Pasqualina Azzarello for depict.

Modi ki nu ta dizenvolvi Areas di Foku: Uzu di Feedback di Lideransa



En Andamentu: Rifina Áreas di Foku en parseria ku nos kumunidade



Rigres

a



Rikuper

a



Rimajina

MAIORIA di nisisidadis di rigresu identifikadu

- Nisisidadis di rigresu identifikadu na Planu Riabertura BPS refinadu Maiu-Agostu 2020:
 - 33 Reunion di Kumunidade
 - 4,000+ stakeholders
 - 10 linguas diferenti
 - 9 reunions ku skola líderes, skritóriu sentral y otus funcionárius

TBD: kuze ki nu podi fazi pa Rigresa ate midjor ki dja nu plania?

TXEU nisisidadis rikuperason identifikadu

- Nisisidadis di rikupera identifikadu na Planu Riabertura BPS refinadu Maiu-Agostu 2020:

TBD: kuze ki nu podi fazi pa Rikupera na manera ki ta restaura perdas di pandemia ben komu dizafius persistenti?

ALGUNS rimajin invizionadu

- Tour di 100 Dia di Superintendenti *Maiu-Otonu 2019* leba pa Planu Stratejiku.

TBD: modi ki nu podi uza kel oportunidadadi li pa kria un novu sistema ki mesti kontrui?

Nu kre obi di bo

- Djunta ku nos na siskuson: <https://www.bostonpublicschools.org/Page/8648>

The screenshot shows the Boston Public Schools website. At the top is a blue navigation bar with the BPS logo and menu items: ABOUT BPS, SCHOOLS, DEPARTMENTS, ENROLL, SCHOOL COMMITTEE, and CAREERS. Below the navigation bar is a breadcrumb trail: Home | About BPS | Budget. The main content area is titled "BUDGET" and features a dark blue sidebar on the left with links: Budget Office, FY2022 BPS Budget Basics, FY2022 Budget Development, Past Budget Developments+, and 2021 BPS Federal Relief Funding. The main content area contains a banner image of a smiling young girl in a grey hoodie, with the BPS logo and the text "Federal Relief Funding" overlaid. Below the banner is a heading: "BPS is expecting \$400M via the Elementary and Secondary School Emergency Relief (ESSER) Fund." This is followed by two paragraphs of text explaining the funding and the formation of a Commission to advise on investment. At the bottom is a blue footer bar with icons and text for Website Accessibility, Site Map, Back to Top, Translate, and Sign In.

BUDGET

- Budget Office
- FY2022 BPS Budget Basics
- FY2022 Budget Development
- Past Budget Developments+
- 2021 BPS Federal Relief Funding

BOSTON Public Schools

Federal Relief Funding

BPS is expecting \$400M via the Elementary and Secondary School Emergency Relief (ESSER) Fund.

Grounded in the community-driven strategic plan, BPS will invest these one-time federal relief funds to return well, recover strong, and reimagine what's possible for our students.

Superintendent Cassellius has formed a Commission to represent the voices of key BPS audiences and advise on the best way to invest federal relief funds. The Commission will host 5 meetings that will be open to the public and at the end of each meeting there will be a public comment period. There will also be a 30 day review and comment period from July 1 to July 30 on the final recommendations of the commission to the Superintendent.

Website Accessibility | Site Map | Back to Top | Translate | Sign In



I. INTRODUSON

II. GUARDRAILS

III. PROXIMUS PASUS

**IV. KUMENTARIU
PUBLIKU**

IV. KUMENTARIU PUBLIKU