



Community Engagement: Federal Relief Funding Planning May 2021 Update



RETURN | RECOVER | REIMAGINE

Grounded in the community-driven strategic plan, BPS will invest these one-time federal relief (ESSER) funds to return well, recover strong and reimagine what's possible for our students





I. INTRODUCTION

II. GUARDRAILS

III. NEXT STEPS

IV. FEEDBACK

AGENDA

I. WELCOME AND INTRODUCTION

II. GUARDRAILS FOR DISCUSSION

III. NEXT STEPS

IV. FEEDBACK



I. INTRODUCTION

II. GUARDRAILS

III. NEXT STEPS

IV. FEEDBACK

I. INTRODUCTION

- A. Welcome to Federal Relief Engagement process
- B. Introductions
- C. The BPS Strategic Plan is the foundation of our work

Our Shared Agreements in the BPS Strategic Plan*



Boston Public Schools
20/25 Strategic Plan

VALUES

“JUICE”: JOY, UNITY, INCLUSION,
COLLABORATION, AND EQUITY

MISSION

EVERY CHILD IN EVERY CLASSROOM IN EVERY
SCHOOL RECEIVES WHAT THEY NEED.

VISION

A NATION-LEADING, STUDENT-CENTERED
PUBLIC SCHOOL DISTRICT PROVIDING
AN EQUITABLE, AND EXCELLENT, WELL-
ROUNDED EDUCATION, THAT PREPARES
EVERY STUDENT FOR SUCCESS IN COLLEGE,
CAREER, AND LIFE.

theory of action

IF we give every student what they need,
earn the trust and true partnership
of families, community members,
and stakeholders through authentic
engagement and shared leadership,
deliver excellent service to students
and families, and provide educators and
staff with professional development and
clear expectations...

THEN we will become a high-performing,
nation-leading district that closes gaps and
improves life outcomes for each student.

*Derived from the Superintendent's 100 Day Listening Tour May-Fall 2019



I. INTRODUCTION

II. GUARDRAILS

III. NEXT STEPS

IV. FEEDBACK

II. 4 GUARDRAILS

- A. Introduction to \$400 Million Federal Funding over 3 years
- B. We are presenting 4 Guardrails to guide this work
- C. 2 of the 4 Guardrails are in draft form and will be refined through the engagement process with the Commission, BPS task forces, families, students, school communities, and partners.

Description of the federal relief funding

\$400M

BPS is applying for nearly \$400 million from the Coronavirus Aid, Relief and Economic Security Act (CARES) and the Elementary and Secondary Schools Emergency Relief fund (ESSER) over the next three years.



We are planning for three years of funding

Plan for Sustainability starting
Year One

Explicitly connect district and
school plans; leverage for
impactful change



Plan, reflect and adjust across
three years

Ensure school-community
engagement



Guardrail 1

Boston Public School Guideines

- The BPS Strategic Plan is our foundation
- % for return and recovery committed costs, such as remote learning and compensatory services
- % for innovation
- % for accountability and increasing equity and impact
- % to ensure BPS infrastructure supports current needs

Guardrail 2

Federal and State Guidelines

- 20% must be spent on Recovery (summer school, etc)
- Over \$10,000 must be spent on mental health
- Capital investments must support return and academic recovery, BUT approval in advanced is required
- Funds cannot be used to pay for executive salaries or to pay unions / associations
- We CAN invest in Title I/II/III/IV categories of activities



Guardrail 3 (to be refined): Allotments

- **Strategic Centrally-Deployed District-wide investments: X%**

Allotments will be driven by the goals in the BPS Strategic Plan in our Return, Recover and Reimagine Phase of implementation. Quarterly monitoring will ensure implementation, impact, and transparency.

- **School Plan related investments: X%**

Direct school investments will be formula-based and determined by Quality School Plans, engagement of the school community including School Equity Roundtables, and a collaborative budget process to ensure equitable academic and other supports for students.

- **Regional and School Innovation investments: X%**

Innovation will promote replication and scaling of best practices and those that support “reimagining” education and support for students in evidence-based ways.

- **Community Partnership investments: X%**

Regional and school partnership grants will promote community-based, student and family-serving approaches to provide an ecosystem of care for young people and the adults nurturing their development.

Guardrail 4 (to be refined): Focus Areas



STUDENTS supported for success inside and outside the classroom and school

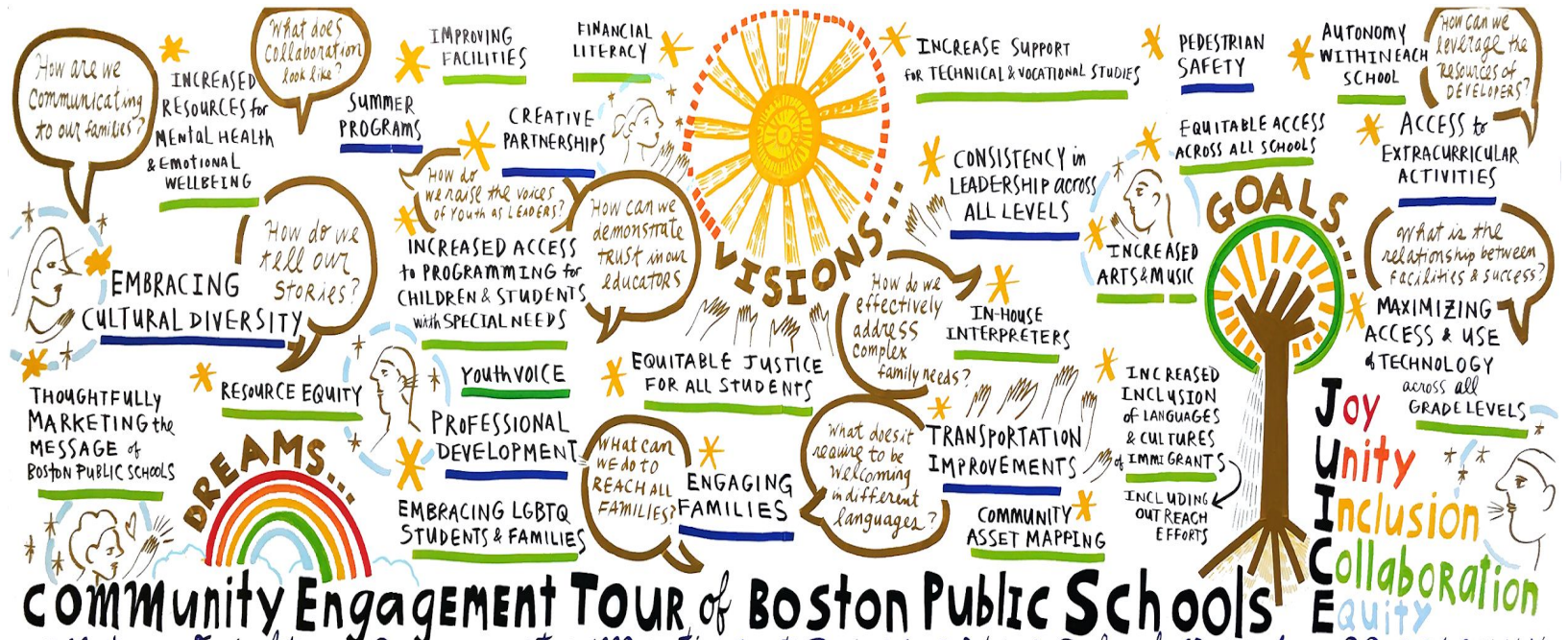
EDUCATORS, leaders, staff who reflect the diversity of our students and have the capacity, knowledge and tools to support all students

CONTENT based in high-quality curriculum supporting excellence in Literacy, Math, Science, and other areas of teaching & learning

How we developed the Focus Areas: Engagement Timeline



How we developed the Focus Areas: School & Community Feedback



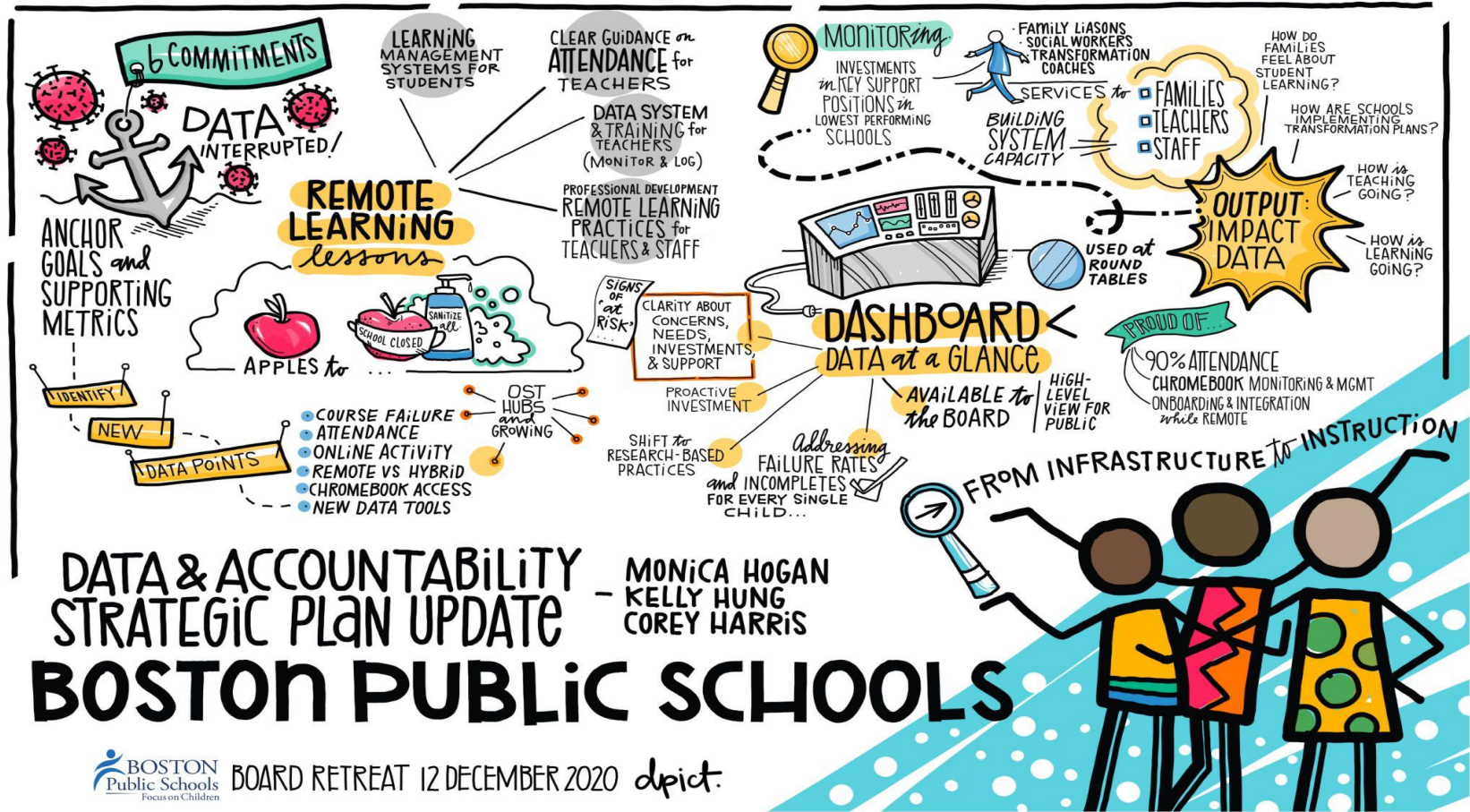
COMMUNITY ENGAGEMENT TOUR of Boston Public Schools
 Allston-Brighton Community Meeting at Brighton High School // October 29, 2019 ***



Allston-Brighton Community Meeting at Brighton High School | October 29, 2019
 Community Engagement Tour of Boston Public Schools

Graphic Facilitation by Pasqualina Azzarello for depict.

How we developed the Focus Areas: Leadership Use of Feedback



Ongoing: Refining Focus Areas in partnership with our communities



Return



Recover



Reimagine

MOST Return needs identified

- Return needs were identified in the BPS [Reopening Plan](#) refined *May-August 2020*:
 - 33 Community Meetings
 - 4,000+ stakeholders
 - 10 different languages
 - 9 meetings with school leaders, central office, and other staff

TBD: what do can we do to Return even better than planned?

MANY Recover needs identified

- Recover needs were identified in the BPS [Reopening Plan](#) refined *May-August 2020*.

TBD: what do can we do to Recover in ways that restore pandemic losses as well as persistent challenges?

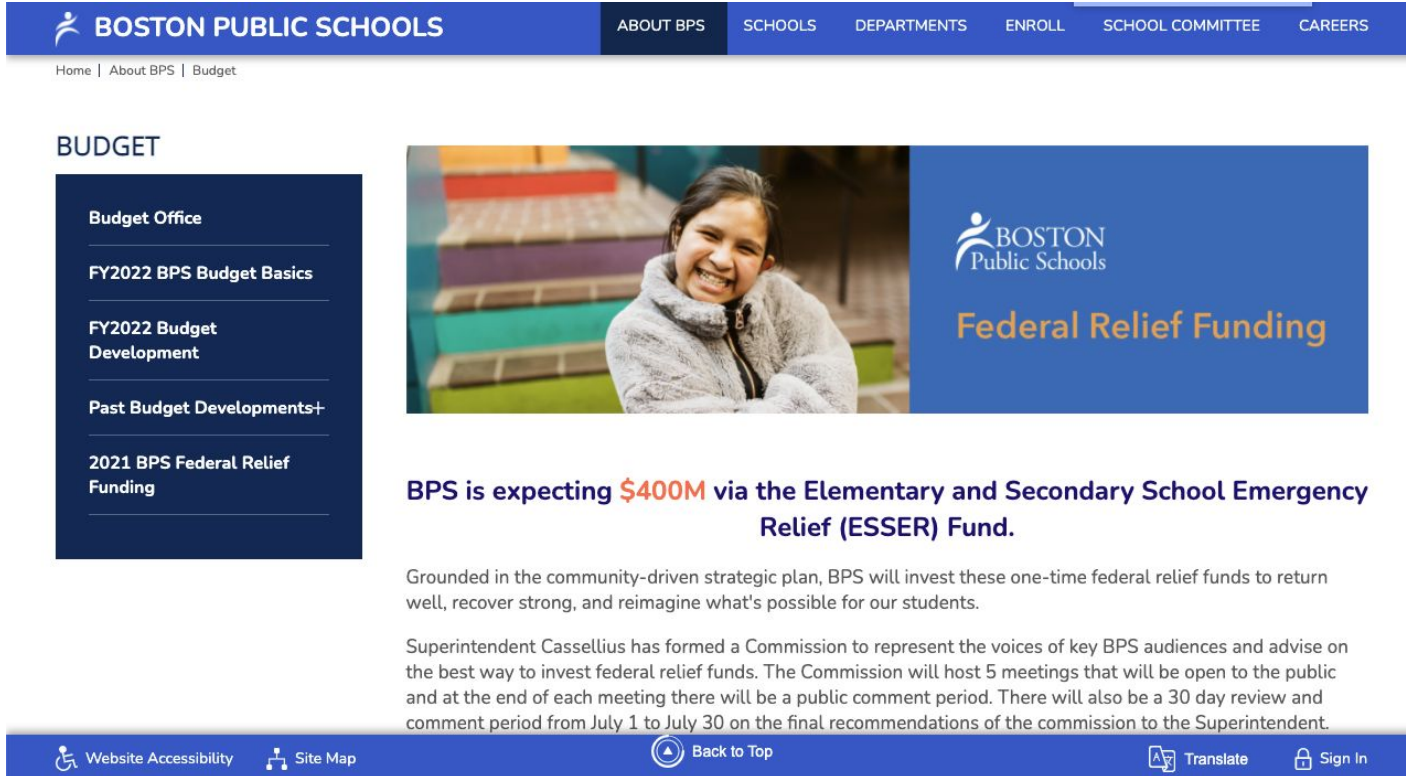
SOME Reimagine envisioned

- The Superintendent's 100-day tour *May-Fall 2019* led to the [Strategic Plan](#) .

TBD: how can we use this opportunity to create anew the system we need to build?

We want to hear from you


- Join us in the conversation: <https://www.bostonpublicschools.org/Page/8648>



The screenshot shows the Boston Public Schools website. The top navigation bar is blue with white text for 'BOSTON PUBLIC SCHOOLS' and menu items: 'ABOUT BPS', 'SCHOOLS', 'DEPARTMENTS', 'ENROLL', 'SCHOOL COMMITTEE', and 'CAREERS'. Below the navigation bar is a breadcrumb trail: 'Home | About BPS | Budget'. The main content area has a dark blue sidebar on the left with the heading 'BUDGET' and a list of links: 'Budget Office', 'FY2022 BPS Budget Basics', 'FY2022 Budget Development', 'Past Budget Developments+', and '2021 BPS Federal Relief Funding'. The main content area features a large banner with a photo of a smiling young girl in a grey hoodie. To the right of the photo is the BPS logo and the text 'Federal Relief Funding'. Below the banner is a bold heading: 'BPS is expecting \$400M via the Elementary and Secondary School Emergency Relief (ESSER) Fund.' This is followed by two paragraphs of text. The first paragraph states that BPS will invest these funds to return well, recover strong, and reimagine what's possible for students. The second paragraph mentions Superintendent Cassellius's Commission to represent key BPS audiences and advise on the best way to invest the funds, including 5 public meetings, a 30-day review, and a comment period from July 1 to July 30. The bottom of the page has a blue footer with icons and text for 'Website Accessibility', 'Site Map', 'Back to Top', 'Translate', and 'Sign In'.

BUDGET

- Budget Office
- FY2022 BPS Budget Basics
- FY2022 Budget Development
- Past Budget Developments+
- 2021 BPS Federal Relief Funding



BPS is expecting \$400M via the Elementary and Secondary School Emergency Relief (ESSER) Fund.

Grounded in the community-driven strategic plan, BPS will invest these one-time federal relief funds to return well, recover strong, and reimagine what's possible for our students.

Superintendent Cassellius has formed a Commission to represent the voices of key BPS audiences and advise on the best way to invest federal relief funds. The Commission will host 5 meetings that will be open to the public and at the end of each meeting there will be a public comment period. There will also be a 30 day review and comment period from July 1 to July 30 on the final recommendations of the commission to the Superintendent.

Website Accessibility | Site Map | Back to Top | Translate | Sign In



I. INTRODUCTION

II. GUARDRAILS

III. NEXT STEPS

IV. FEEDBACK

IV. QUESTIONS, THOUGHTS, FEEDBACK

Guardrail 4: Focus Areas

Discussion

Is there anything critically important that appears to be missing?

